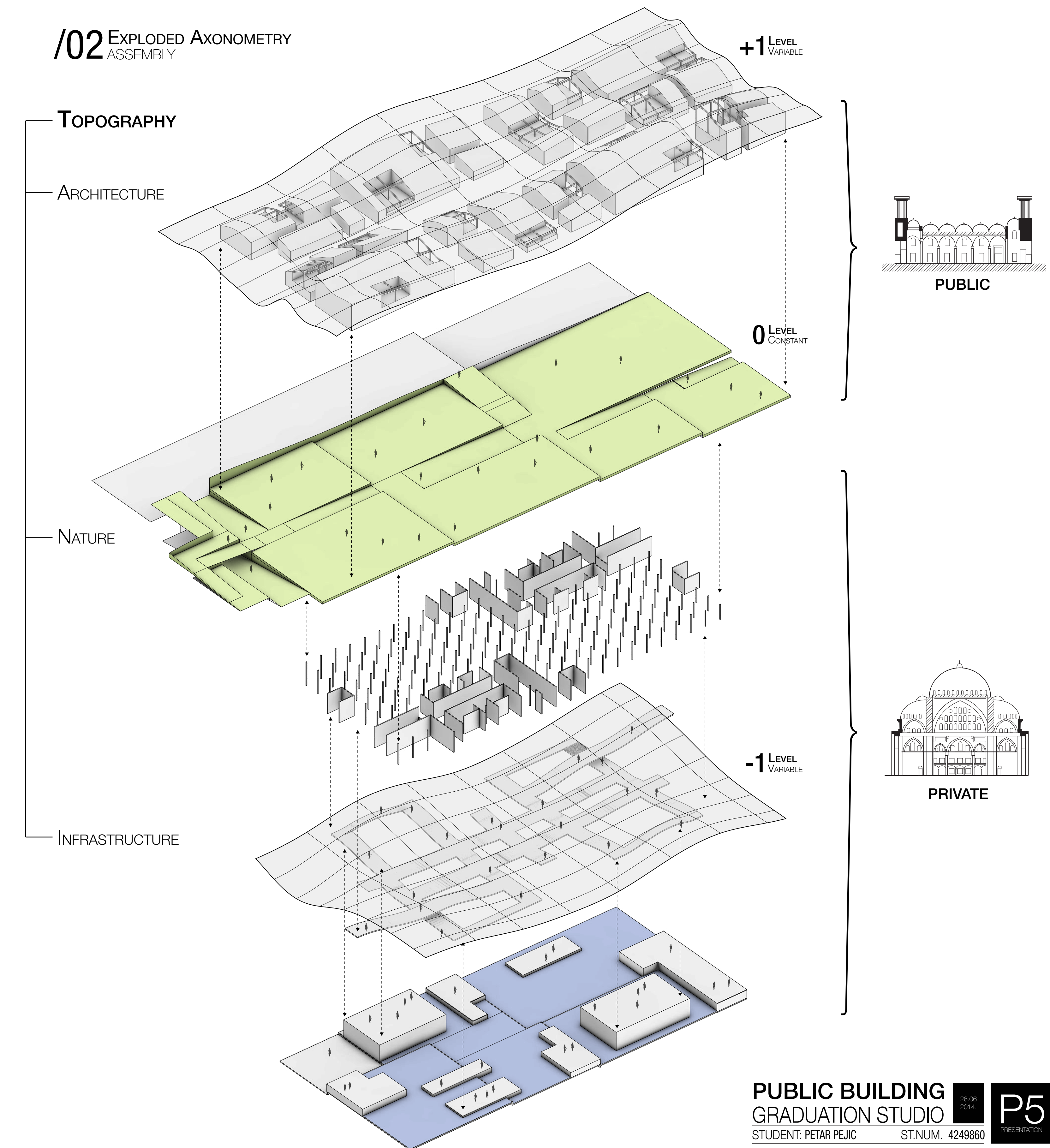
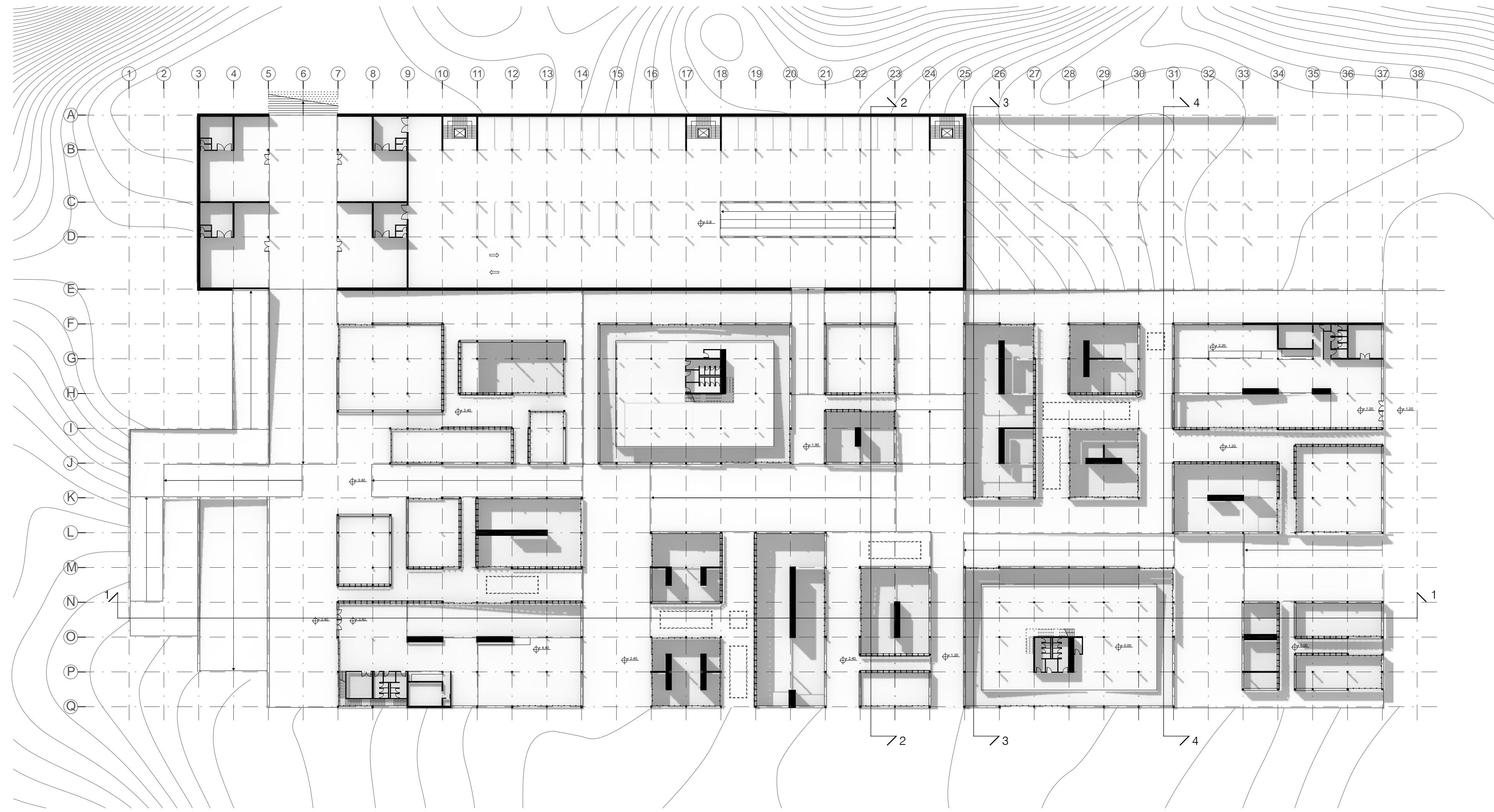


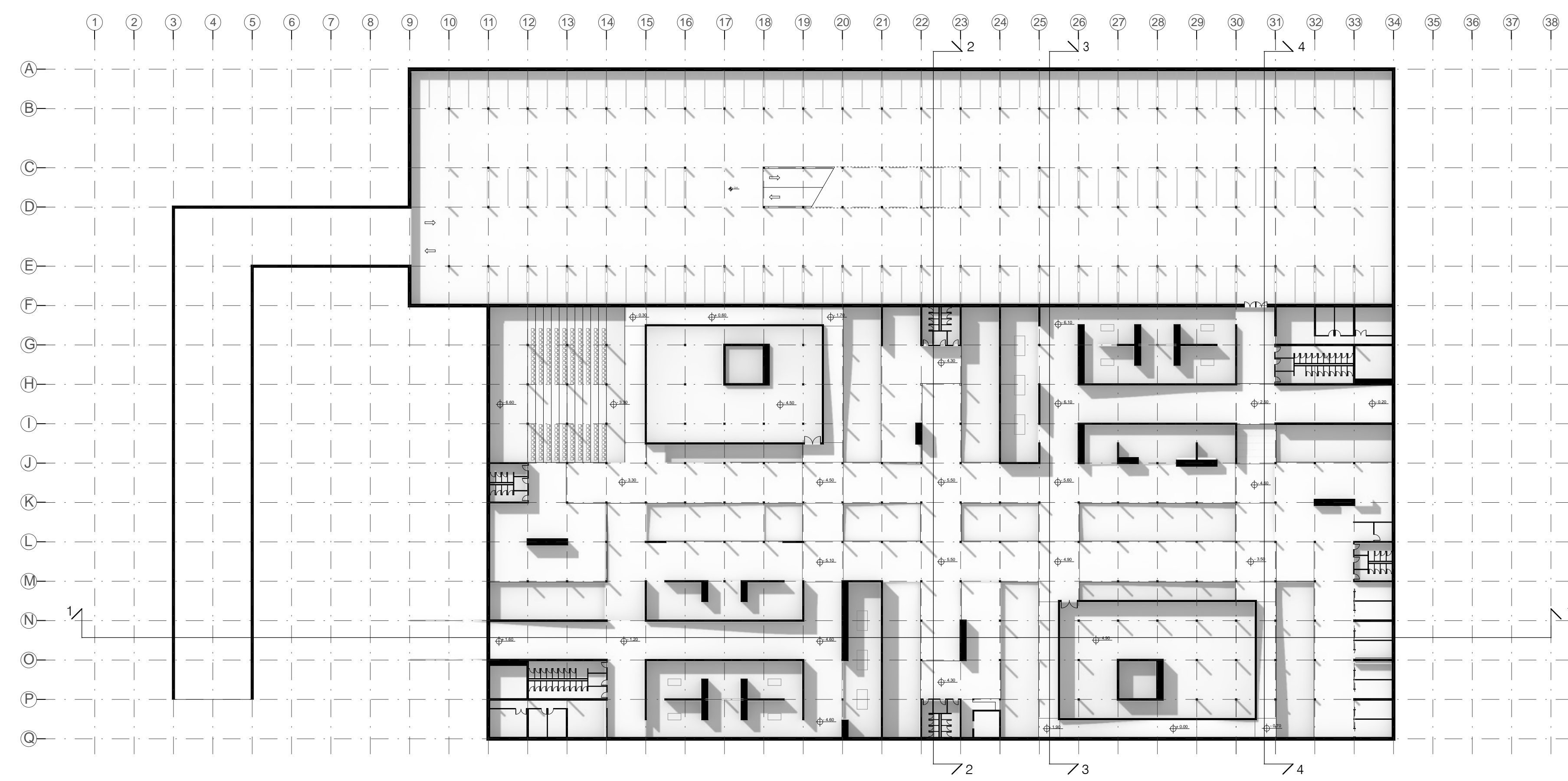
/02 EXPLODED AXONOMETRY ASSEMBLY



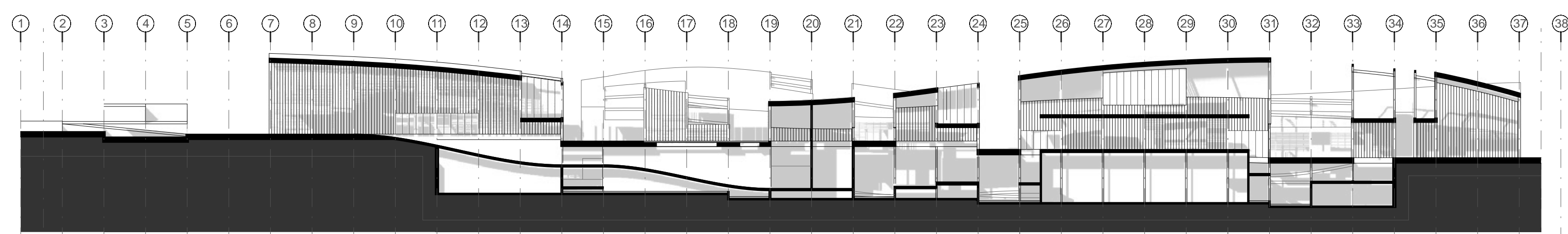
/03 GROUND FLOOR
SCALE 1:500



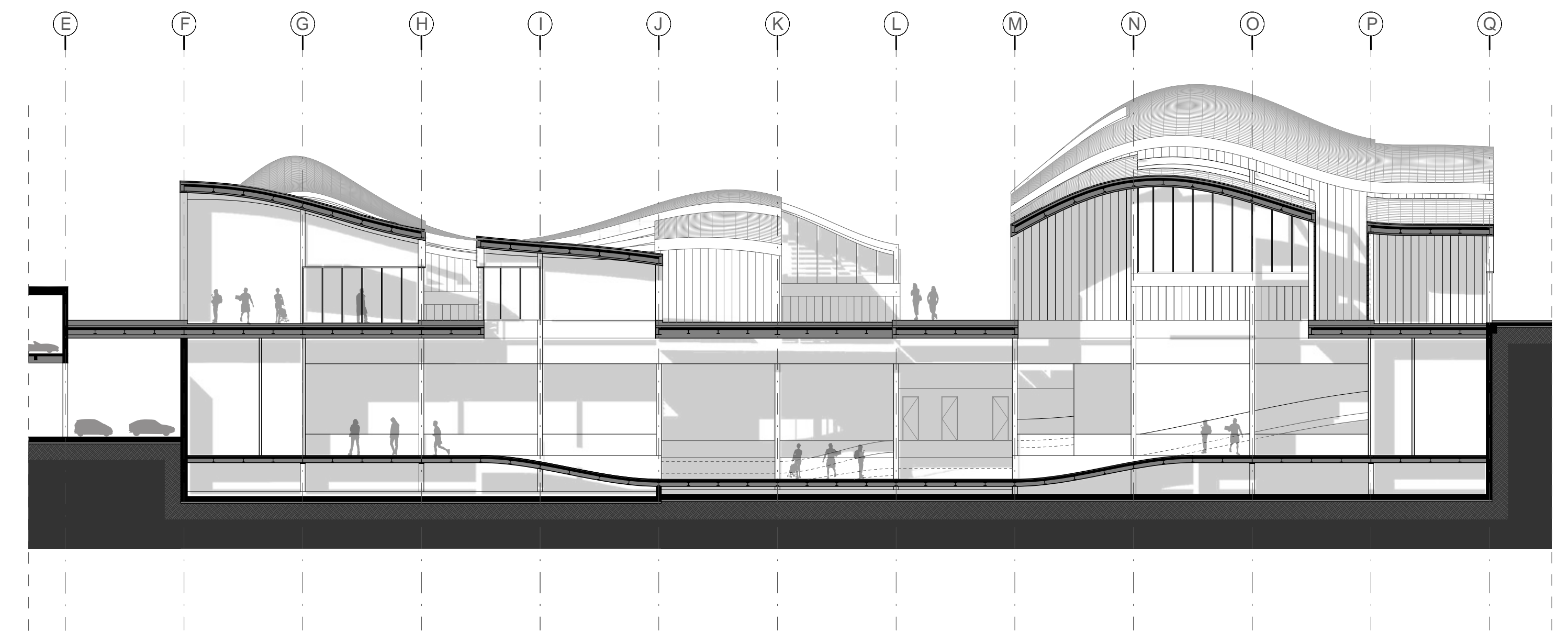
/04 FLOOR PLAN -1
SCALE 1:500



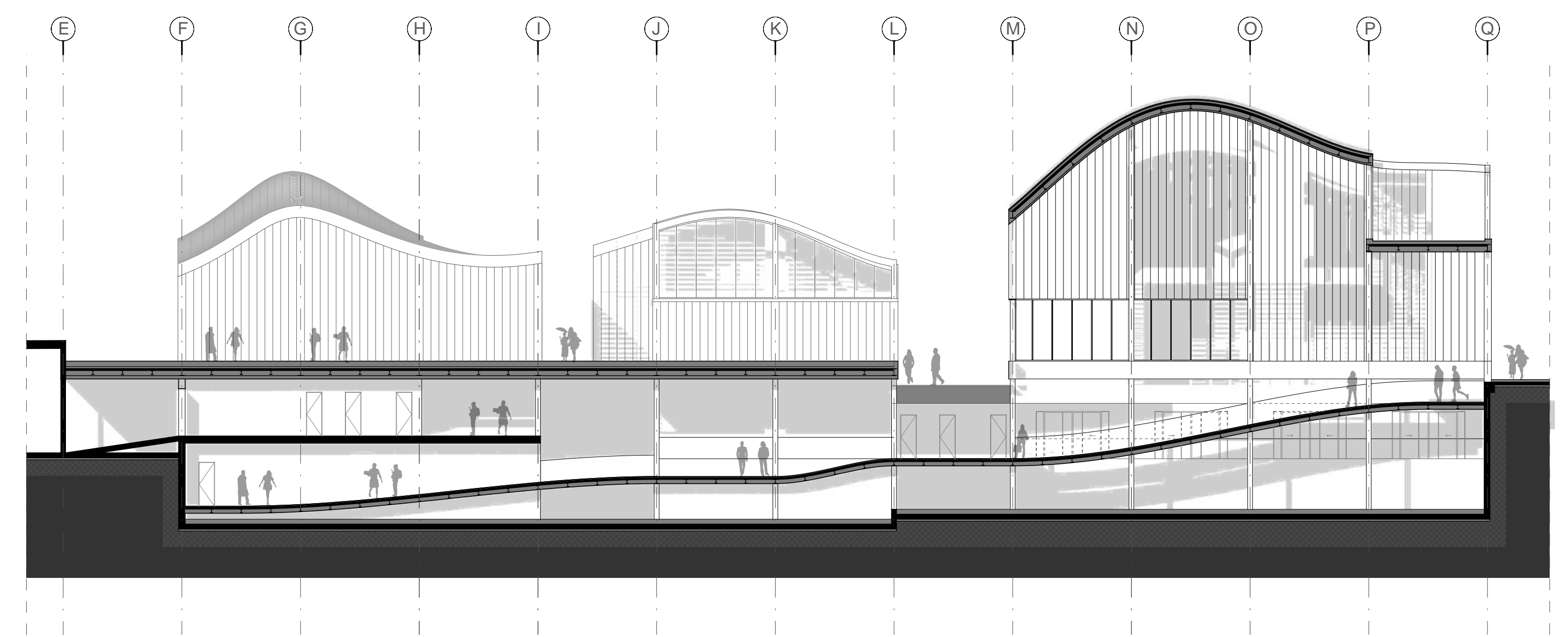
/05 SECTION 1-1
SCALE 1:500



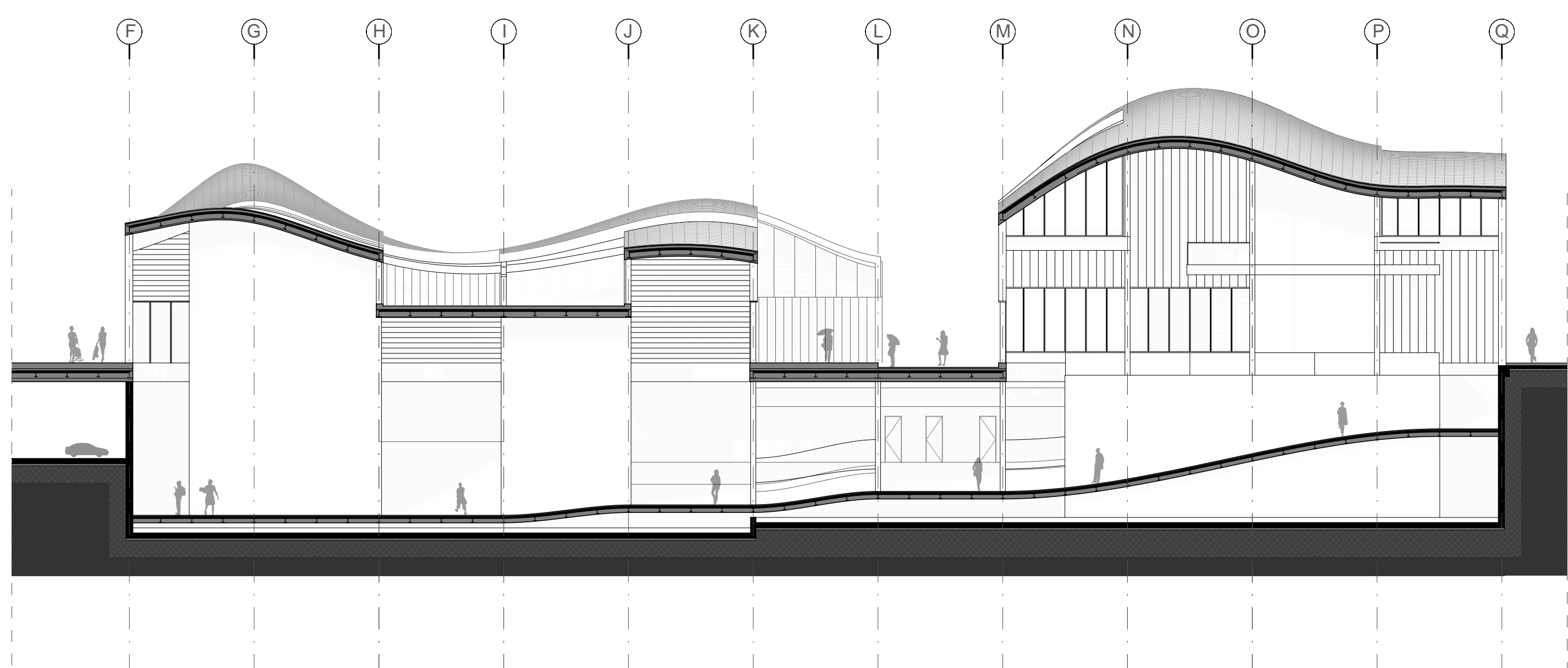
/06 SECTION 2-2
SCALE 1:200



/08 SECTION 3-3
SCALE 1:200



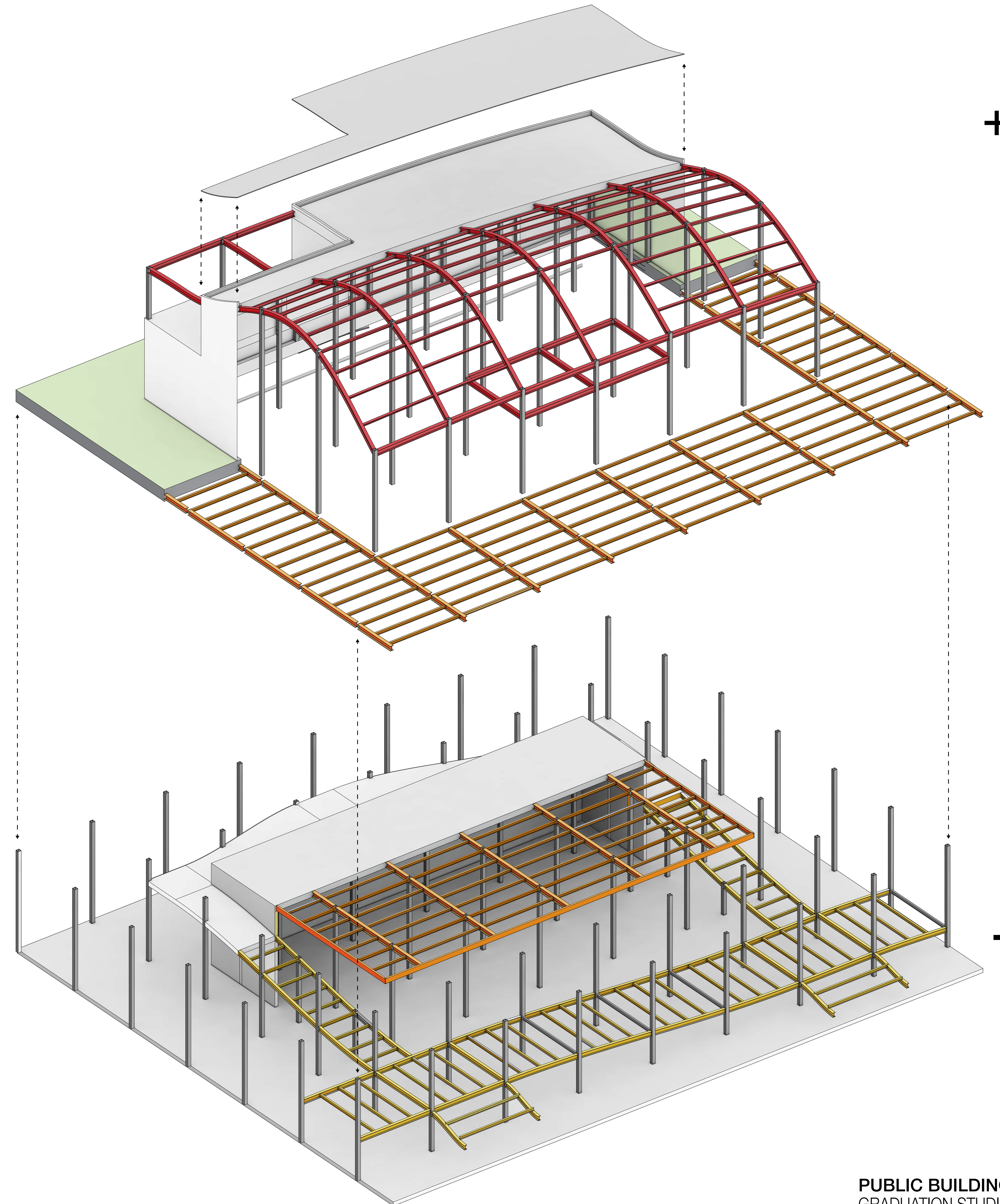
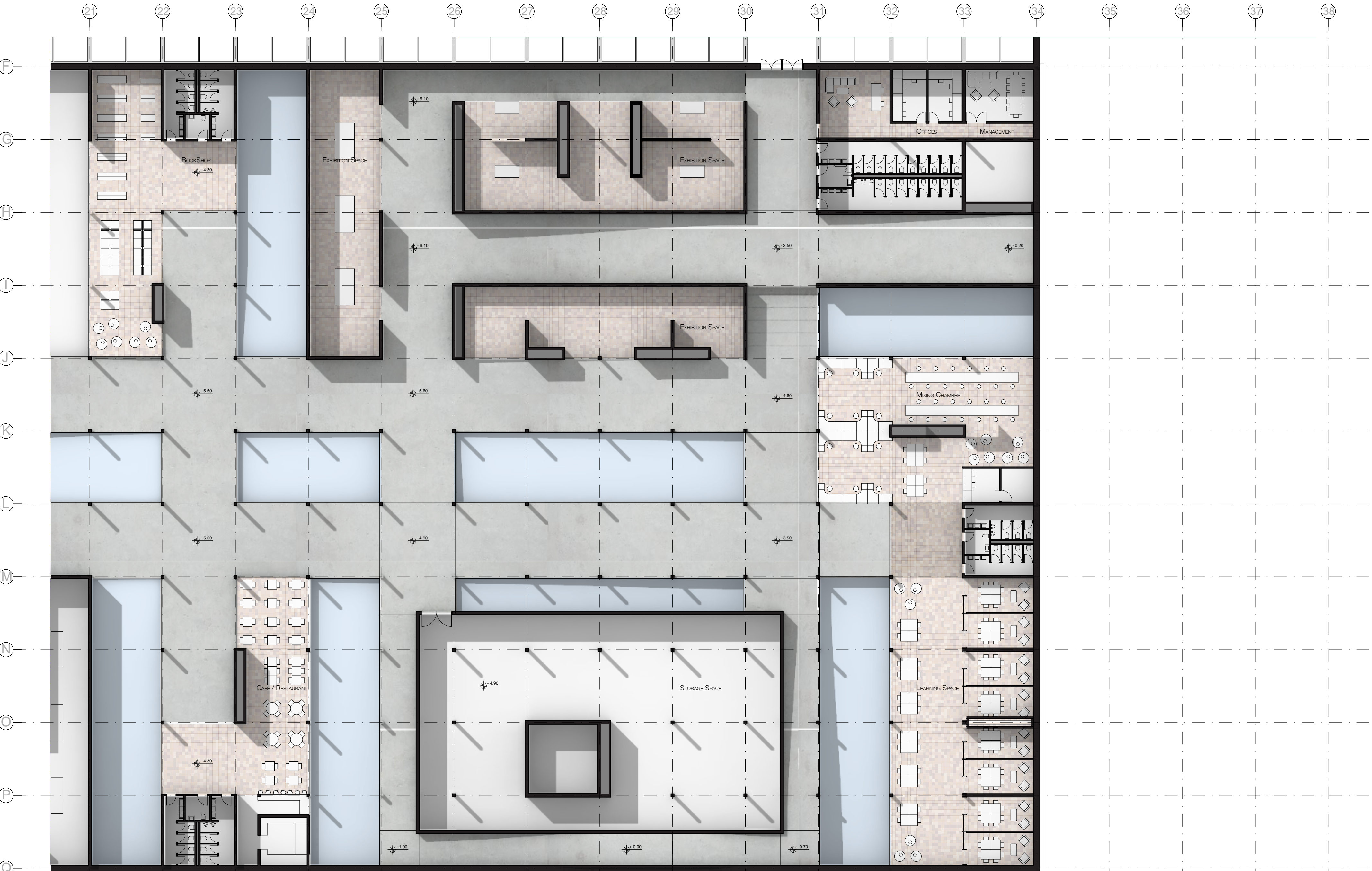
/09 SECTION 4-4
SCALE 1:200



/10 GROUND FLOOR
SCALE 1:200



/11 FLOOR PLAN -1
SCALE 1:200



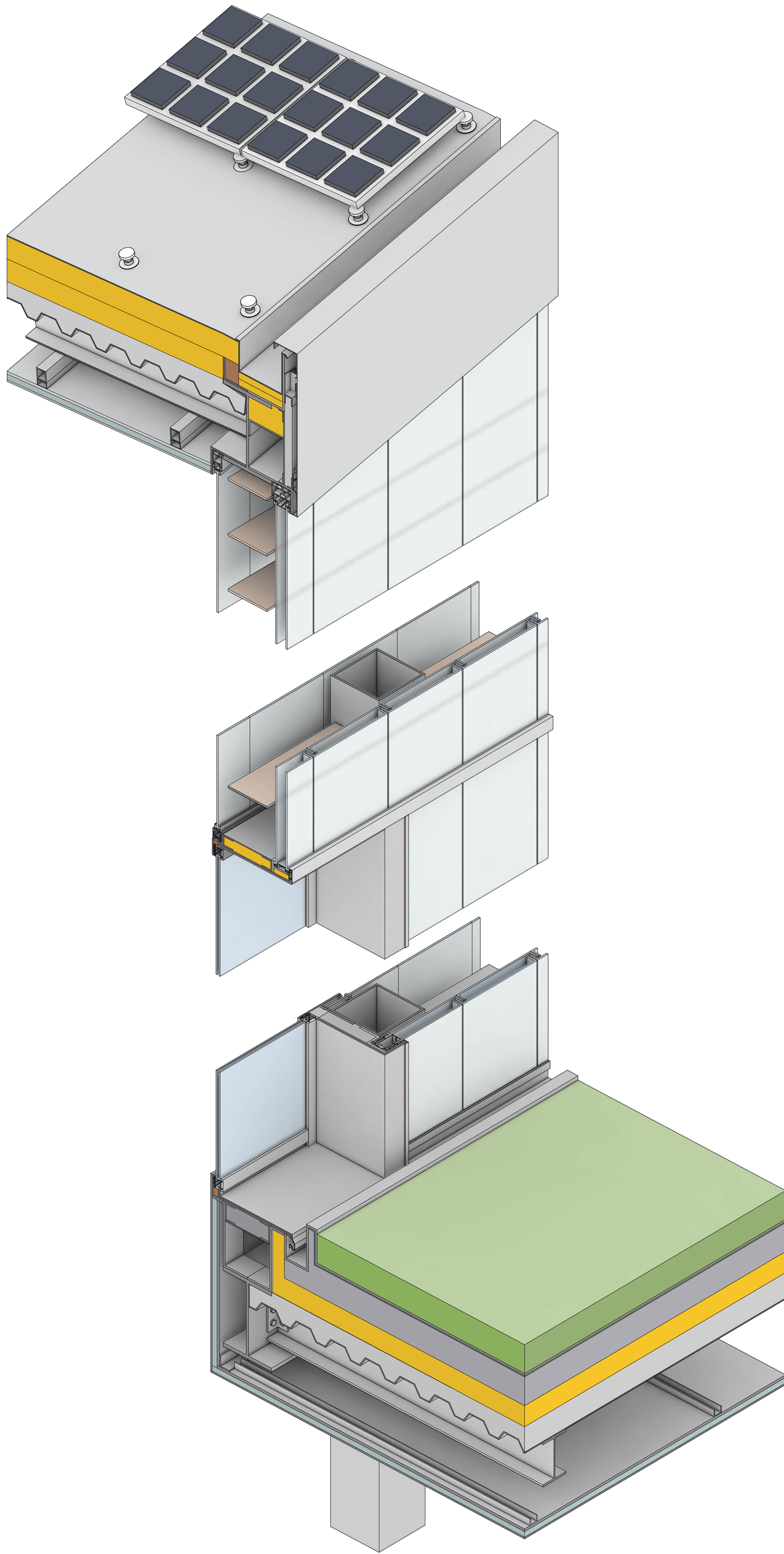
+1 LEVEL
VARIABLE

0 LEVEL
CONSTA

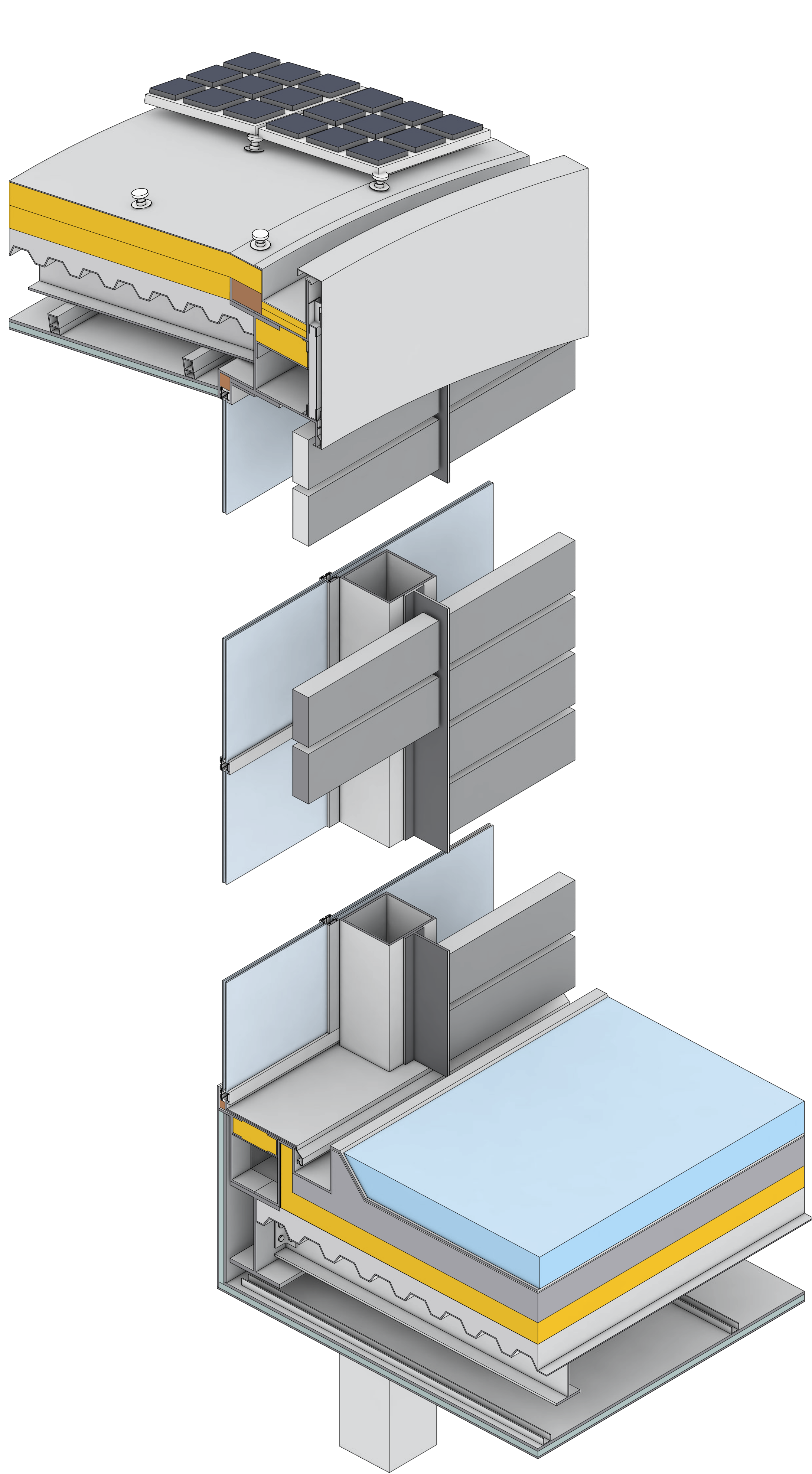
0 LEVEL
CONSTA

-1 LEVEL
VARIABLE

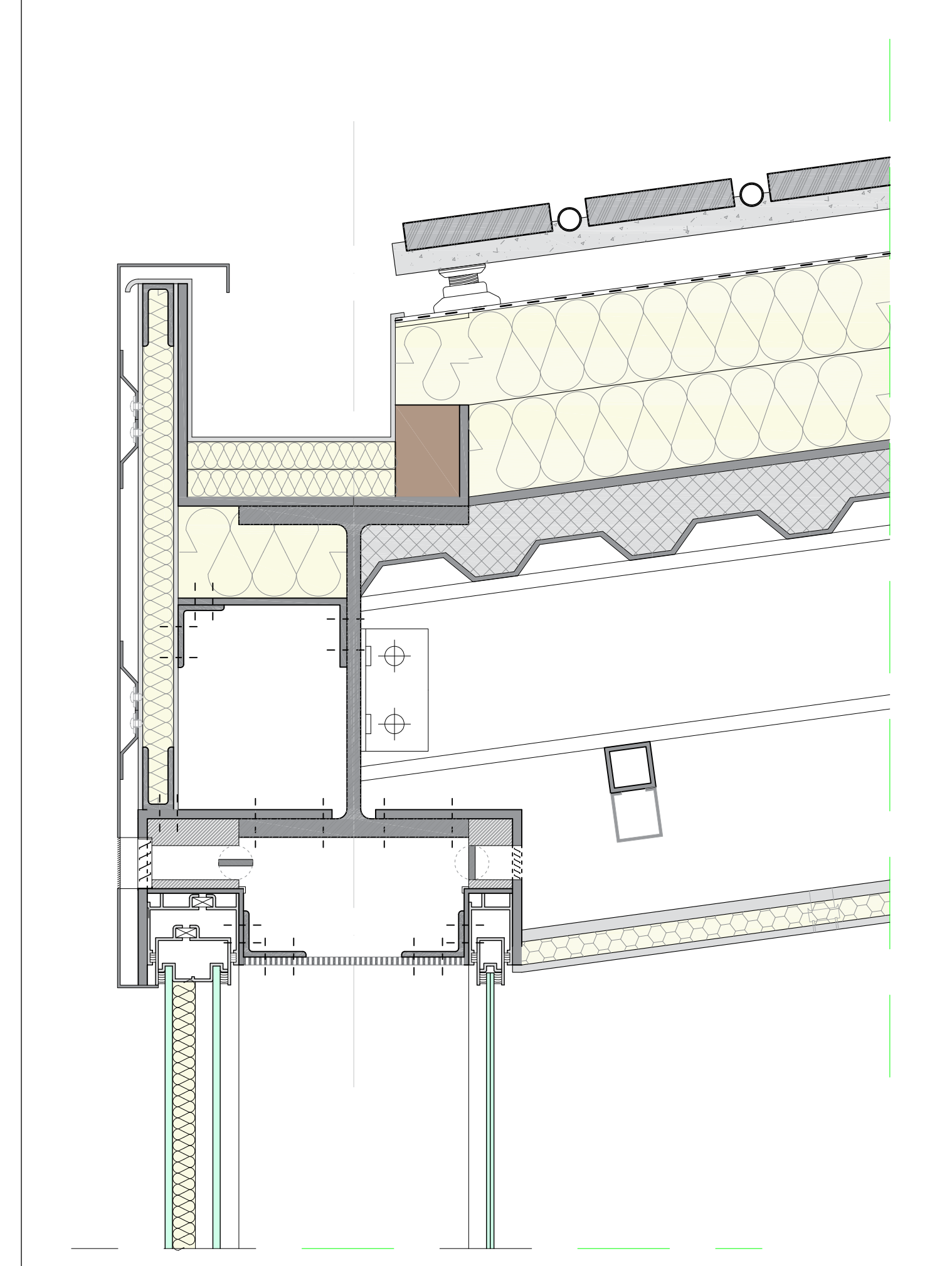
/16 FACADE SECTION DETAIL
SCALE 1:20



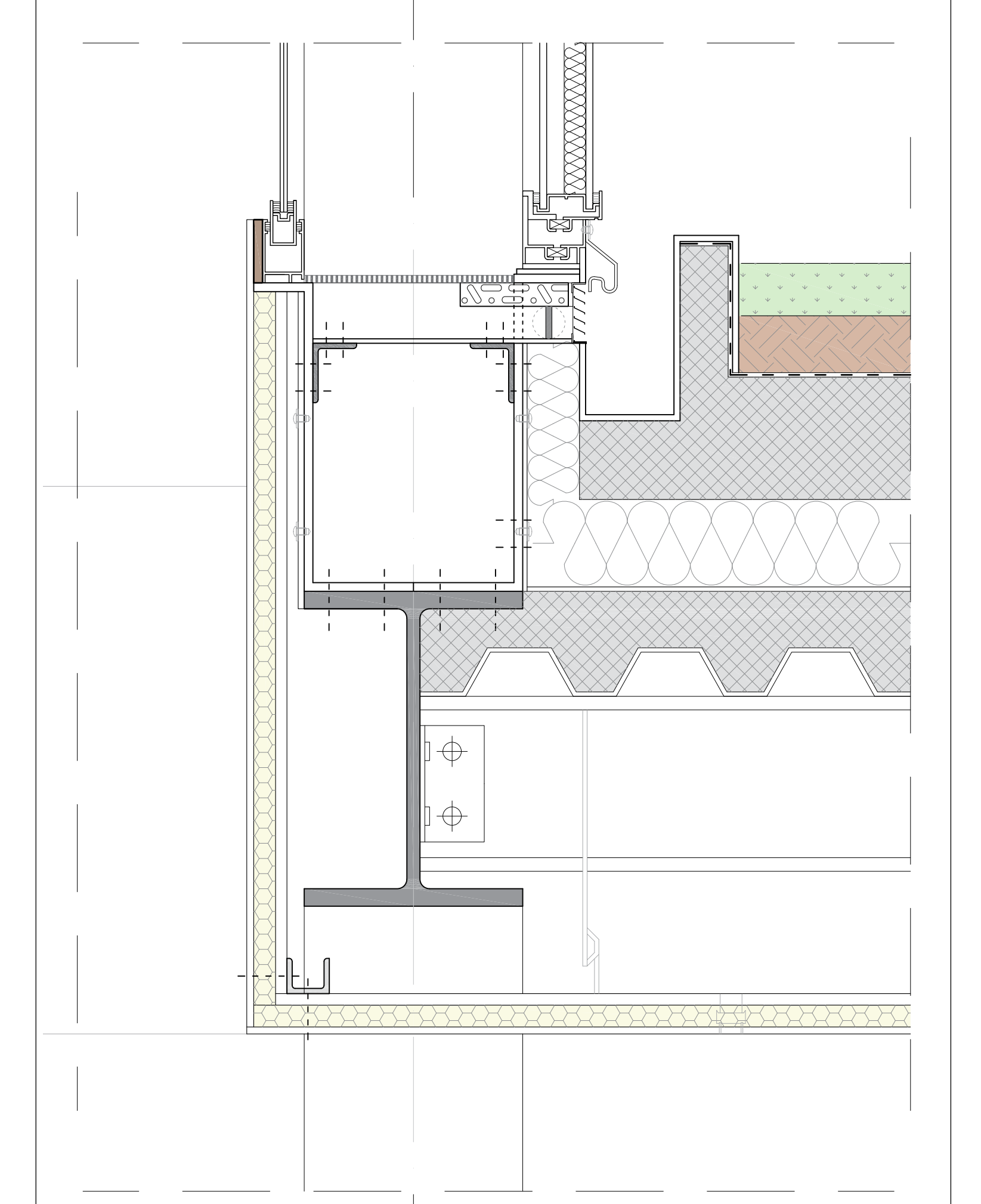
/17 FACADE SECTION DETAIL
SCALE 1:20



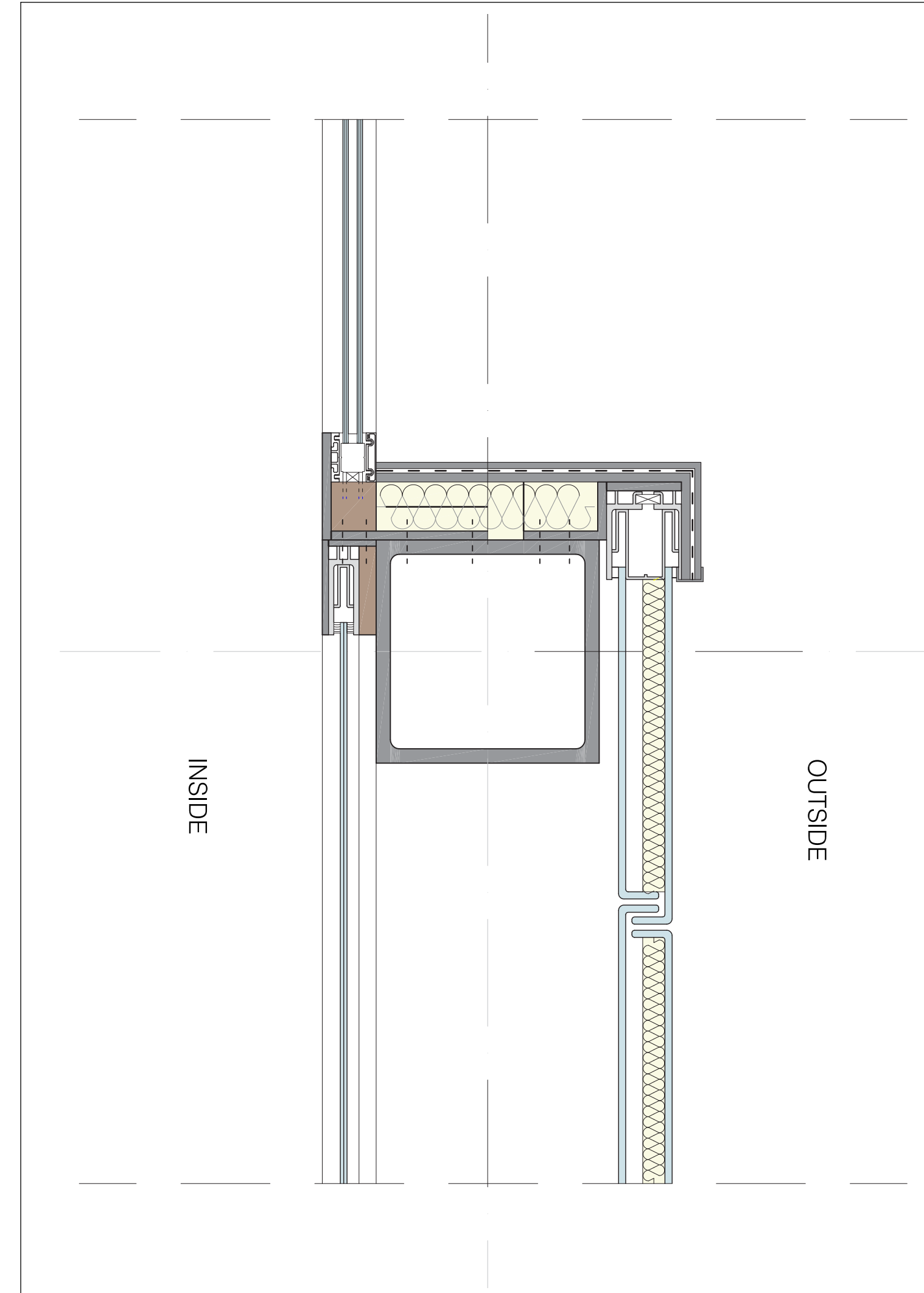
/20 DETAIL 03
SCALE 1:5



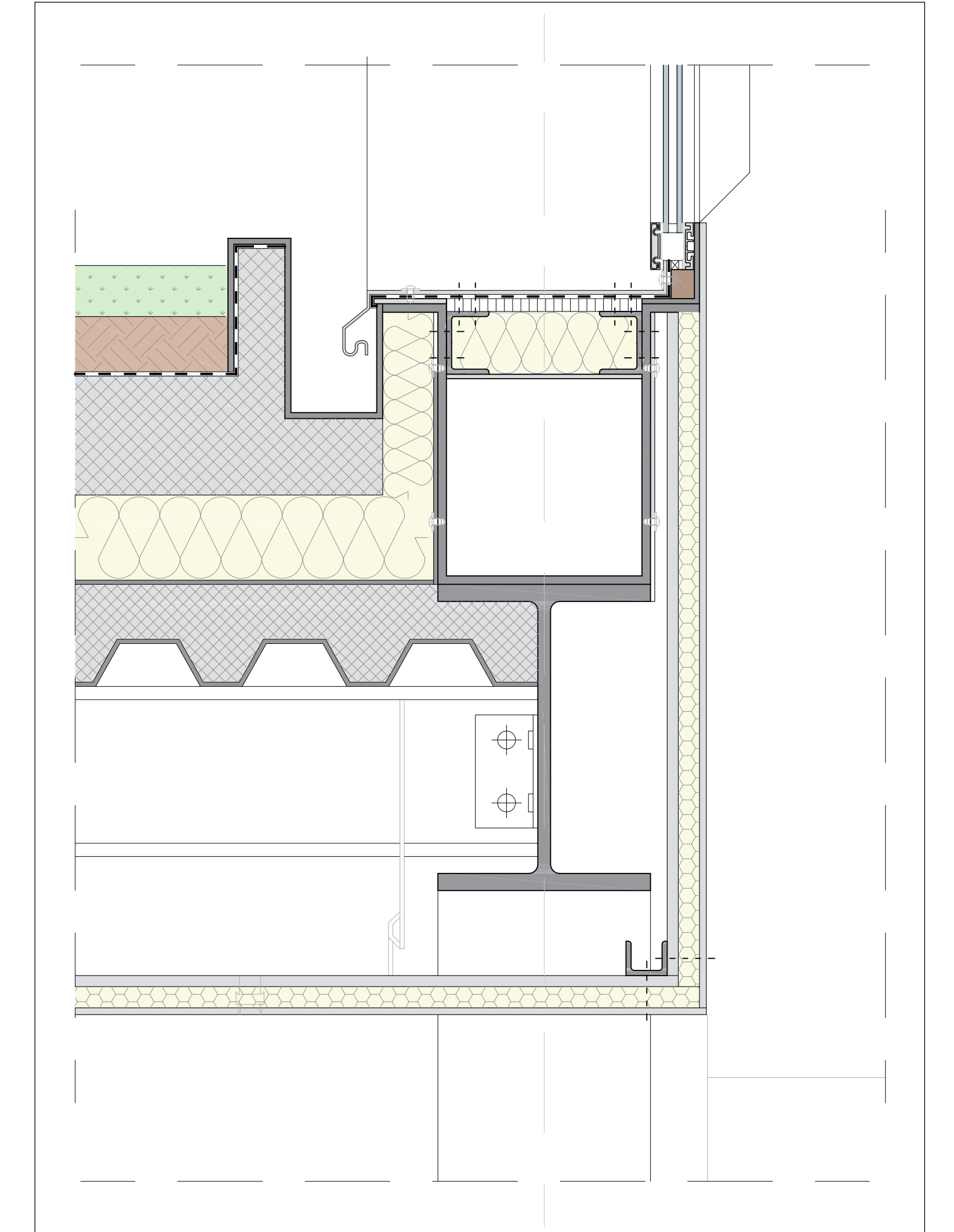
/21 DETAIL 04
SCALE 1:5



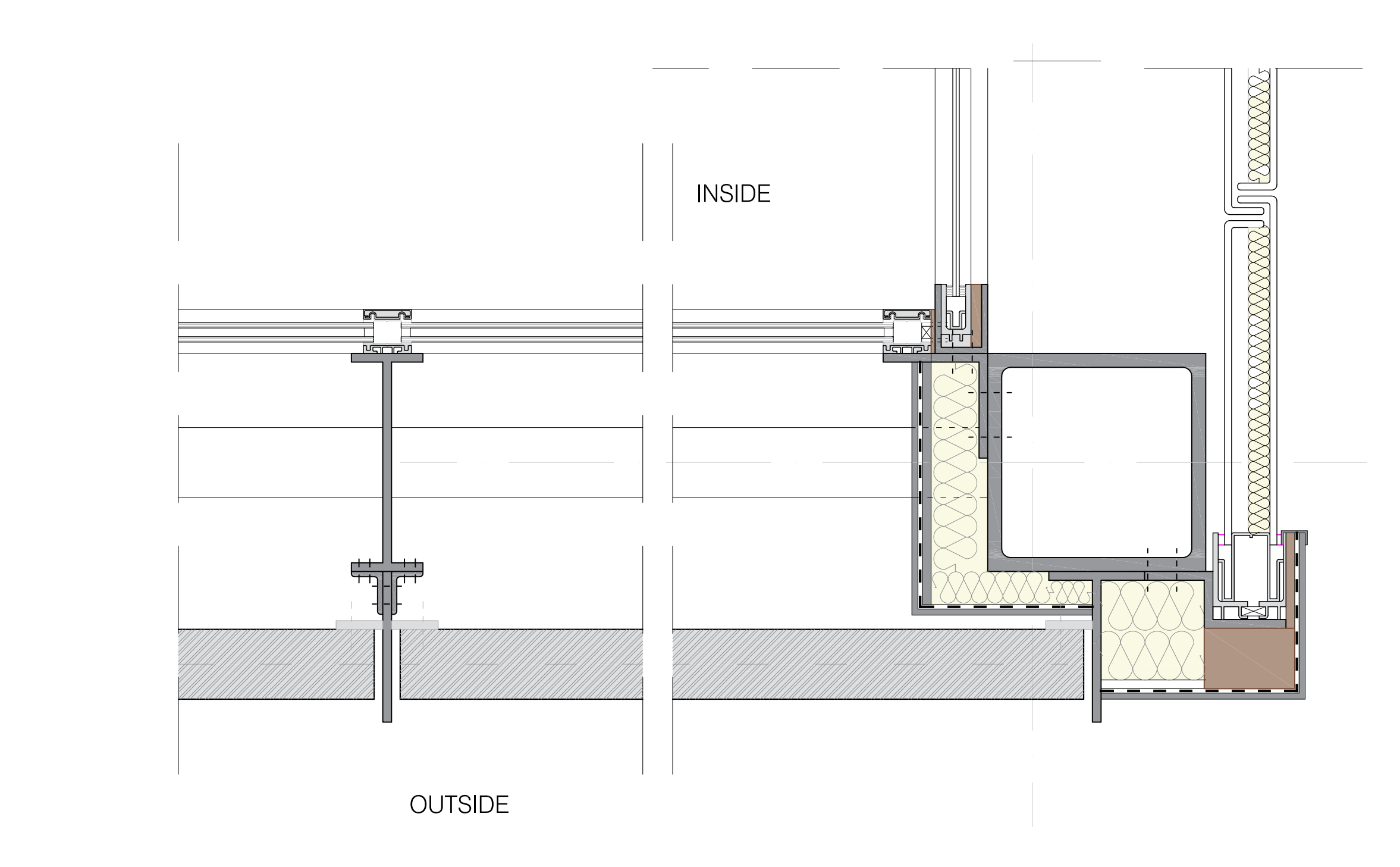
/19 DETAIL 02
SCALE 1:5



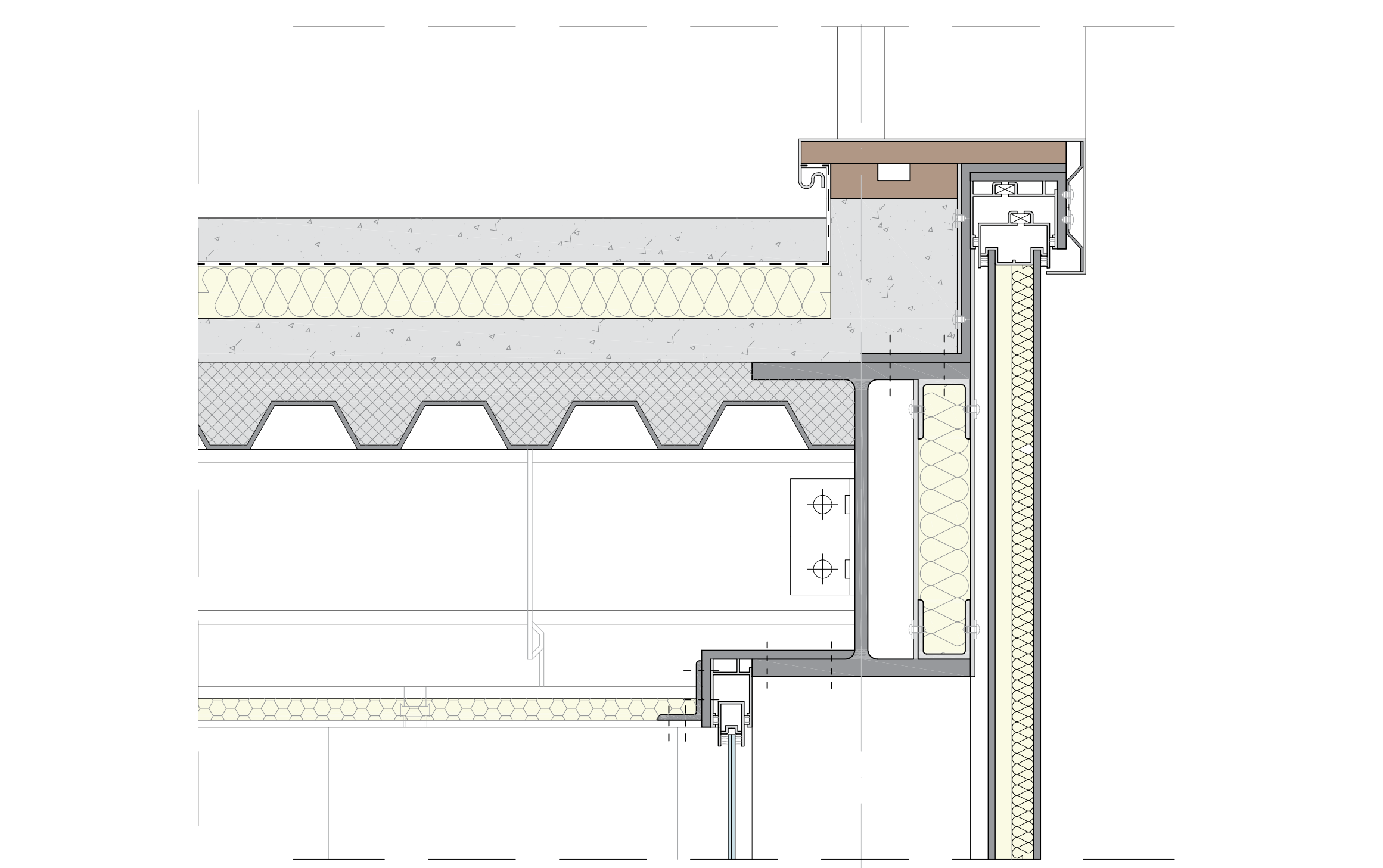
/01 DETAIL 06
SCALE 1:5



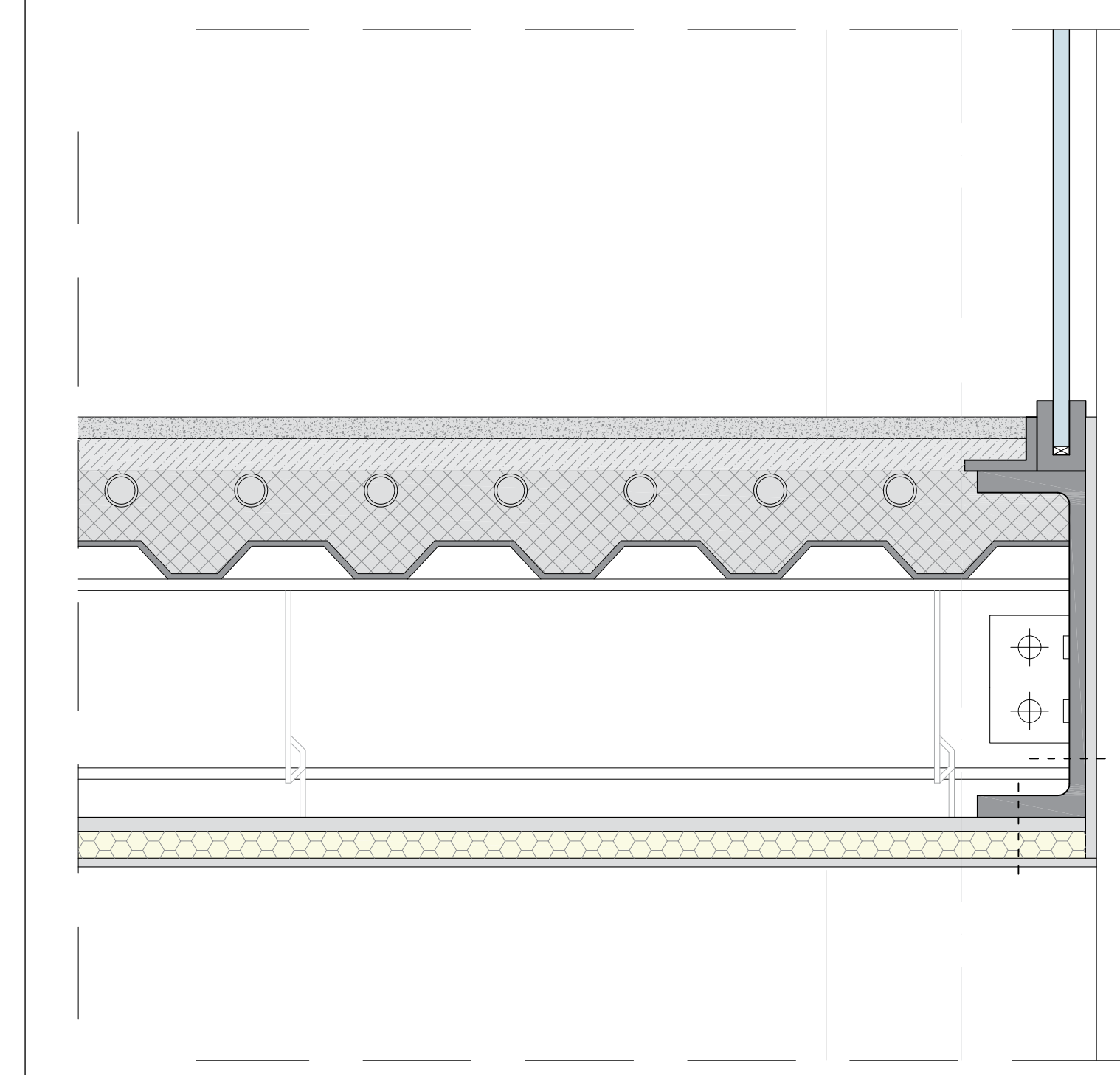
/18 DETAIL 01
SCALE 1:5

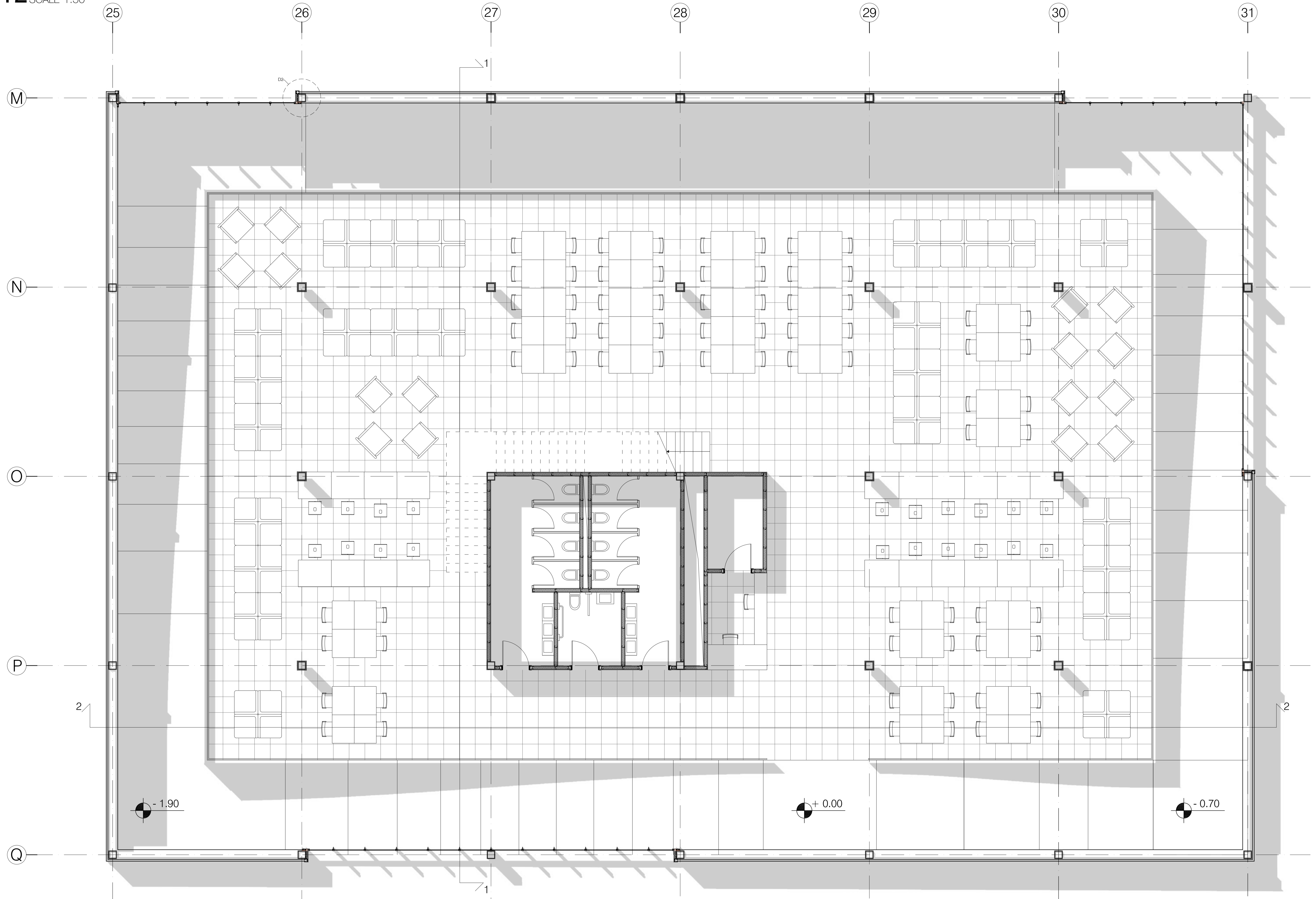


/22 DETAIL 05
SCALE 1:5

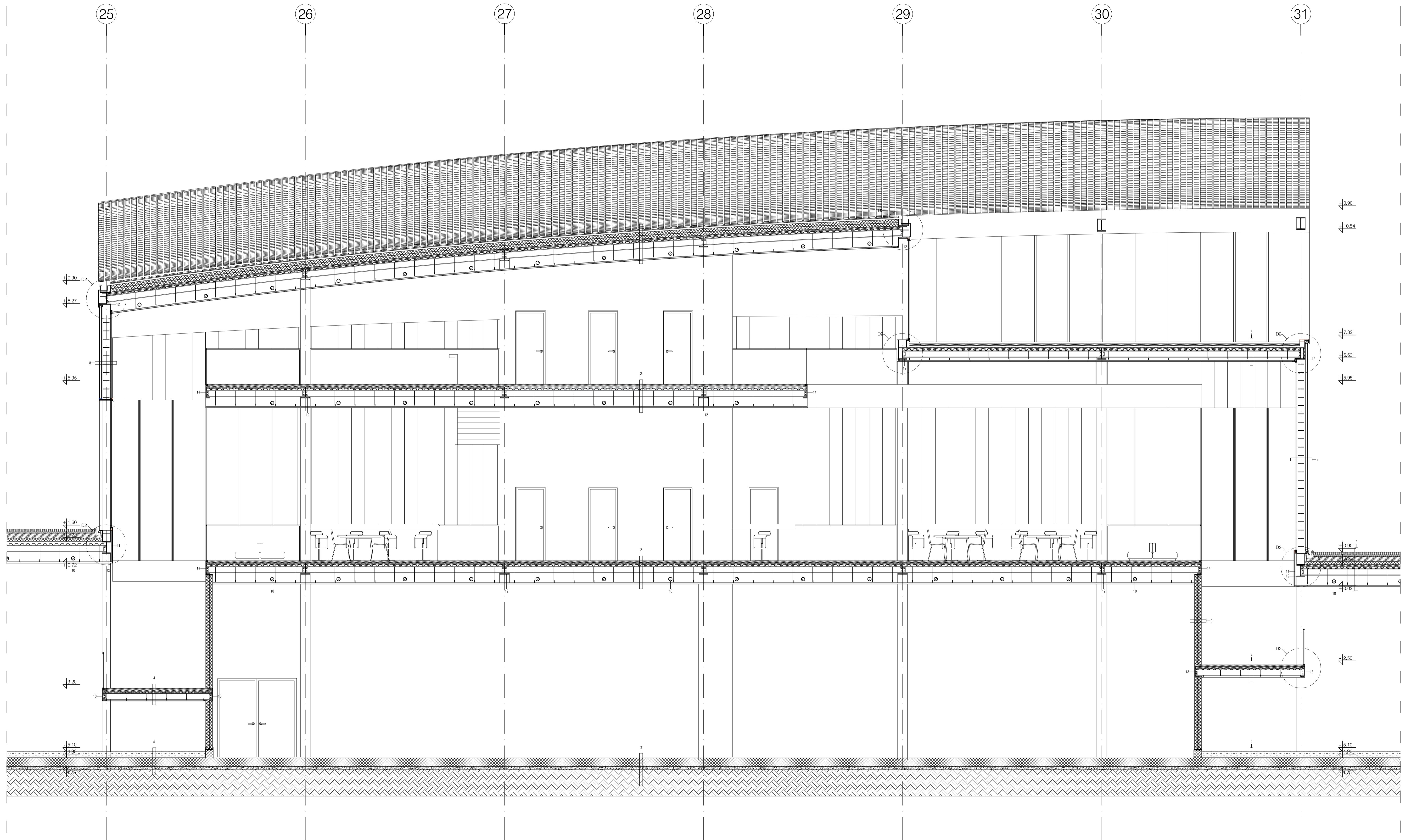


/23 DETAIL 07
SCALE 1:5

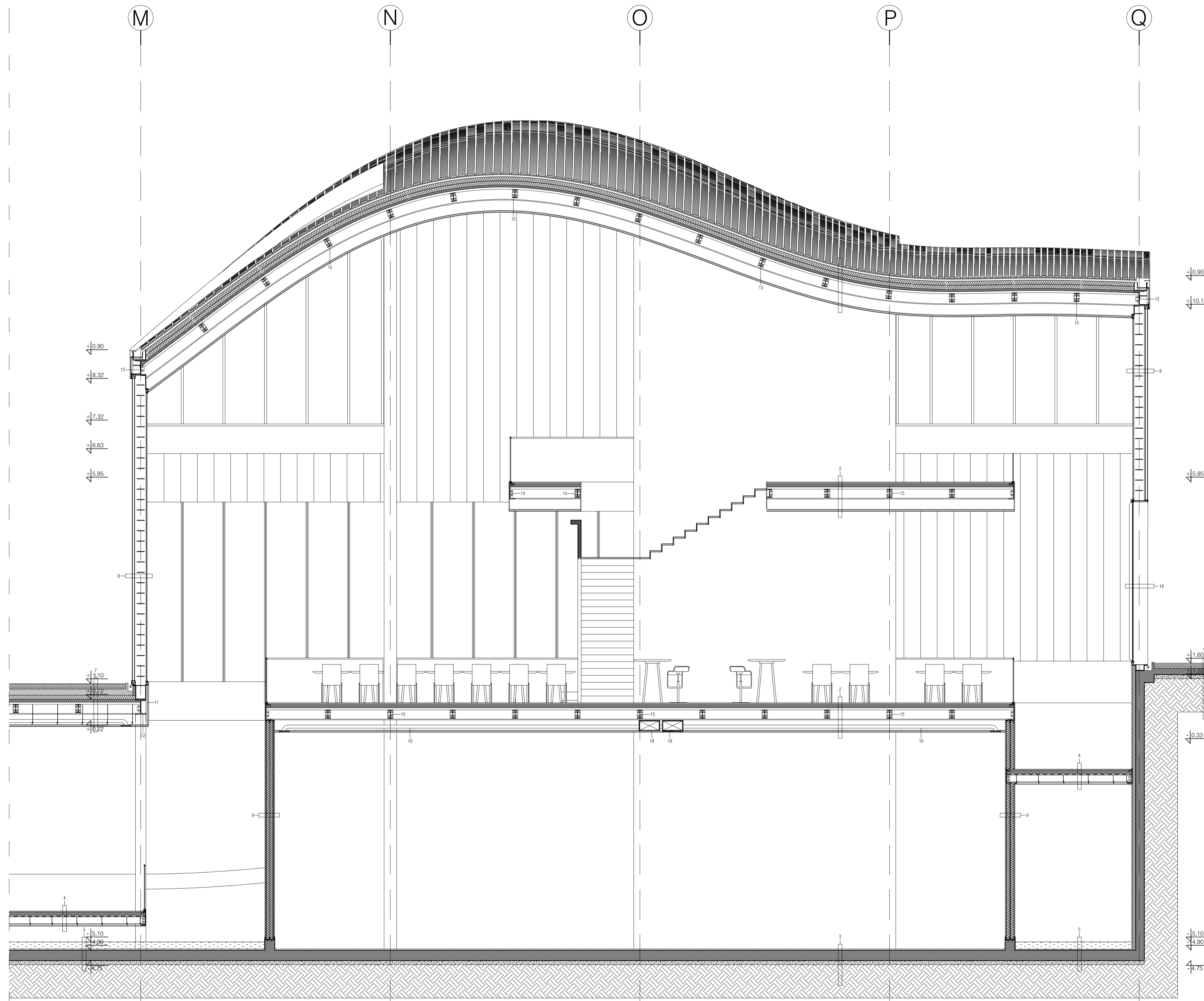




/13 SECTION 2-2
SCALE 1:50



/14 SECTION 1-1
SCALE 1:50



DESCRIPTIONS

- 1 PREFABRICATED ROOF PANELS (800mm x 800mm x 150mm) WITH GAP (200mm)
- 2 WATERPROOF MEMBRANE (100mm)
- 3 THERMAL INSULATION (100mm)
- 4 COMPOSITE SLAB CONSISTING OF CONCRETE FILL OVER COMPACTED SLEETING (100mm)
- 5 STEEL I/P BEAM (H=300mm) AIR GAP (200mm)
- 6 FALSE CEILING FINISHED BY GYPSUM BOARD (8mm) SOUND INSULATION (25mm) AND FRAME OF C-PROFILE ON TR BEGS
- 7 CONCRETE WITH FIBRE FIBRE FIBRE (200mm)
- 8 CONCRETE SLAB CONSISTING OF CONCRETE FILL OVER COMPACTED SLEETING (100mm) WITH FLOOR HEATING SYSTEM STEEL I/P BEAM (H=300mm) AIR GAP (200mm)
- 9 FALSE CEILING FINISHED BY GYPSUM BOARD (8mm) SOUND INSULATION (25mm) AND FRAME OF C-PROFILE ON TR BEGS
- 10 CONCRETE WITH FIBRE FIBRE FIBRE (200mm)
- 11 CONCRETE SLAB CONSISTING OF CONCRETE FILL OVER COMPACTED SLEETING (100mm) WITH FLOOR HEATING SYSTEM STEEL I/P BEAM (H=300mm) AIR GAP (200mm)
- 12 FALSE CEILING FINISHED BY GYPSUM BOARD (8mm) SOUND INSULATION (25mm) AND FRAME OF C-PROFILE ON TR BEGS
- 13 STORAGE RAIN WATER (200mm)
- 14 CONCRETE FIBRE FIBRE (200mm)
- 15 WATERPROOF MEMBRANE (100mm)
- 16 CONCRETE SLAB CONSISTING OF CONCRETE FILL OVER COMPACTED SLEETING (100mm)
- 17 EARTH / STONE
- 18 PREFABRICATED ROOF PANELS (800mm x 800mm x 150mm) WITH GAP (200mm)
- 19 SLOPING LAYER (100mm)
- 20 COMPOSITE SLAB CONSISTING OF CONCRETE FILL OVER COMPACTED SLEETING (100mm)
- 21 STEEL I/P BEAM (H=300mm) AIR GAP (200mm)
- 22 FALSE CEILING FINISHED BY GYPSUM BOARD (8mm) SOUND INSULATION (25mm) AND FRAME OF C-PROFILE ON TR BEGS
- 23 GRASS WITH EARTH SUPPLEMENT (100mm)
- 24 WATERPROOF MEMBRANE (100mm)
- 25 SUPPORTING VOLUME WITH SLOPE MADE OUT OF CONCRETE (100mm)
- 26 THERMAL INSULATION (100mm)
- 27 COMPOSITE SLAB CONSISTING OF CONCRETE FILL OVER COMPACTED SLEETING (100mm) WITH FLOOR HEATING SYSTEM STEEL I/P BEAM (H=300mm) AIR GAP (200mm)
- 28 FALSE CEILING FINISHED BY GYPSUM BOARD (8mm) SOUND INSULATION (25mm) AND FRAME OF C-PROFILE ON TR BEGS
- 29 DOUBLE LAYER OF LOW IRON SUPPLY GLASS SHEET (100mm) WITH TRANSLUCENT INSULATION IN ALUMINIUM FRAME SYSTEM AIR GAP (200mm)
- 30 SINGLE LAYER OF SUPPLEMENTED GLASS SHEET IN ALUMINIUM FRAME SYSTEM
- 31 GYPSUM BOARD (12.5mm)
- 32 THERMAL INSULATION (25mm)
- 33 THERMAL INSULATION (25mm)
- 34 THERMAL INSULATION (25mm)
- 35 THERMAL INSULATION (25mm)
- 36 THERMAL INSULATION (25mm)
- 37 GYPSUM BOARD (12.5mm)
- 38 VENTILATION DUCT (Ø100mm)
- 39 GYPSUM BOARD (20mm)
- 40 PREFABRICATED ROOF PANELS (800mm x 800mm x 150mm)
- 41 STEEL I/P BEAM (H=300mm)
- 42 STEEL I-PROFILE (120mm x 100mm)
- 43 STEEL I-PROFILE (200mm x 150mm)
- 44 STEEL I-PROFILE (200mm x 150mm)
- 45 STEEL I/P BEAM (H=200mm)
- 46 DOUBLE GLAZING GLASS PANEL IN ALUMINIUM FRAME SYSTEM SUPPORTING T-STEEL PROFILE (Ø=100mm)
- 47 GRASS WITH EARTH SUPPLEMENT (100mm)
- 48 WATERPROOF MEMBRANE (100mm)
- 49 SUPPORTING VOLUME WITH SLOPE MADE OUT OF CONCRETE (100mm)
- 50 THERMAL INSULATION (100mm)
- 51 CONCRETE SLAB (H=200mm)
- 52 GYPSUM BOARD (12.5mm)
- 53 EARTH / STONE
- 54 SUPPLY AIR DUCT RECTANGULAR PROFILE (250mm x 250mm)
- 55 EXHAUST AIR DUCT RECTANGULAR PROFILE (250mm x 250mm)