

House of Boredom



A4 presentation
15.06.2026

Veerle De Vries
Lianne Klitsie

Max Brink | 5653754 | Explore Lab



Scene of the movie Koyaanisqatsi

We have lost the ability to do nothing

As life is perceived exclusively through the lens of labour and performance, inactivity is understood as unproductive

~ philosopher Byung-Chul Han

creativity, reflection, and mental well-being

House of Boredom

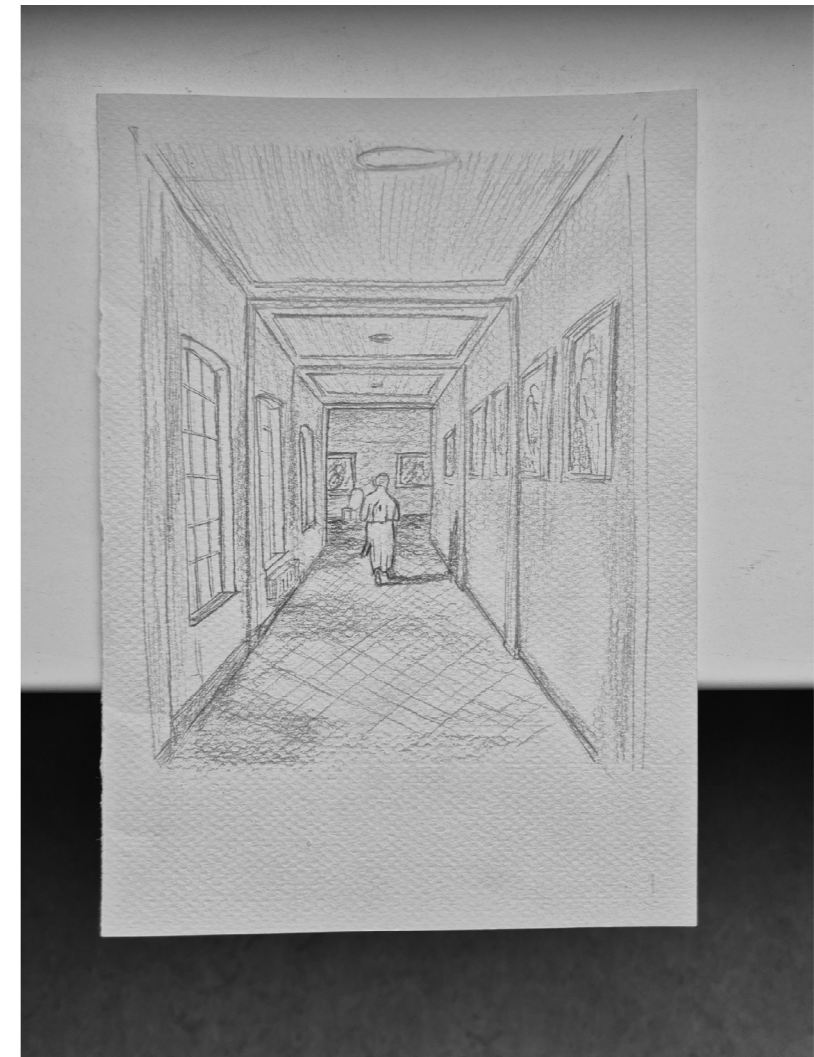
House of Boredom

The development of a new architectural typology

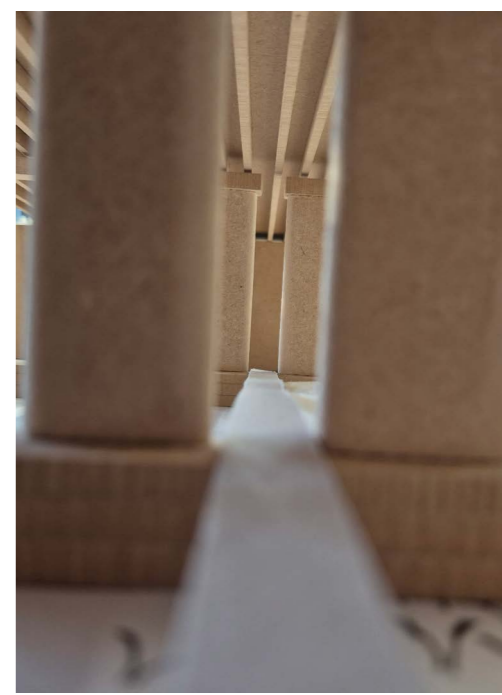
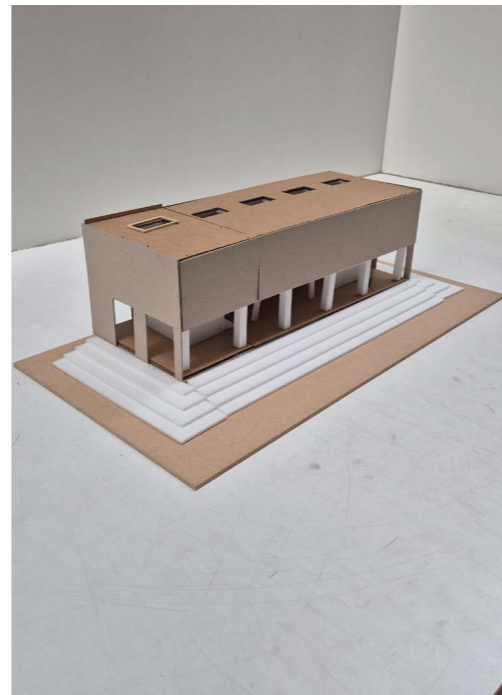
How can a public architectural space create conditions that foreground inactivity and boredom within the contemporary city?

- What **rituals and rhythms** can help a public architectural space create conditions for inactivity, boredom, and contemplation?
- What **site-specific sounds and views** can support a public architectural space in creating conditions for inactivity, boredom, and contemplation?
- How can **filmic concepts** such as light, sequence, and duration inform architectural conditions that support boredom and contemplation?

methodology



methodology



methodology



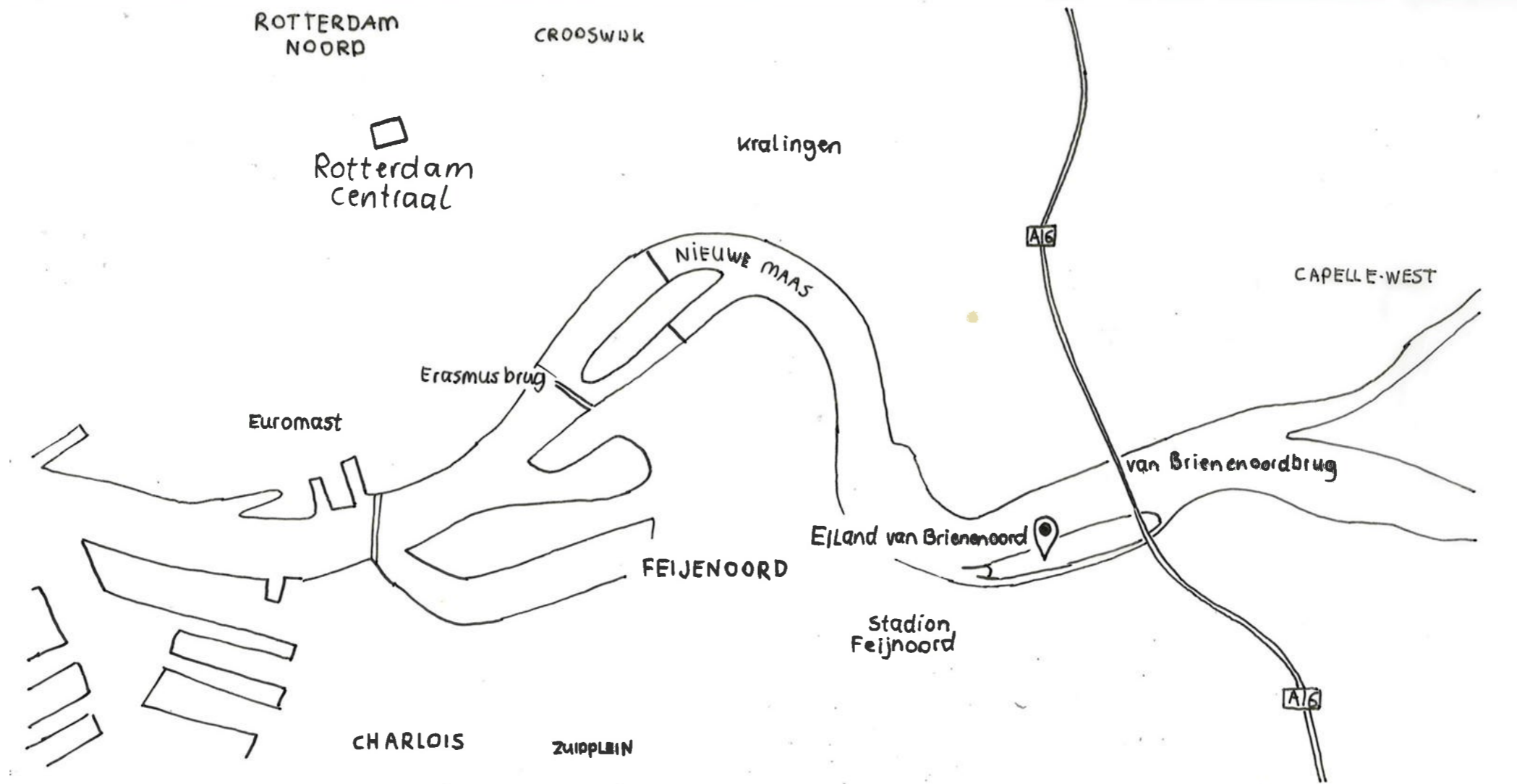


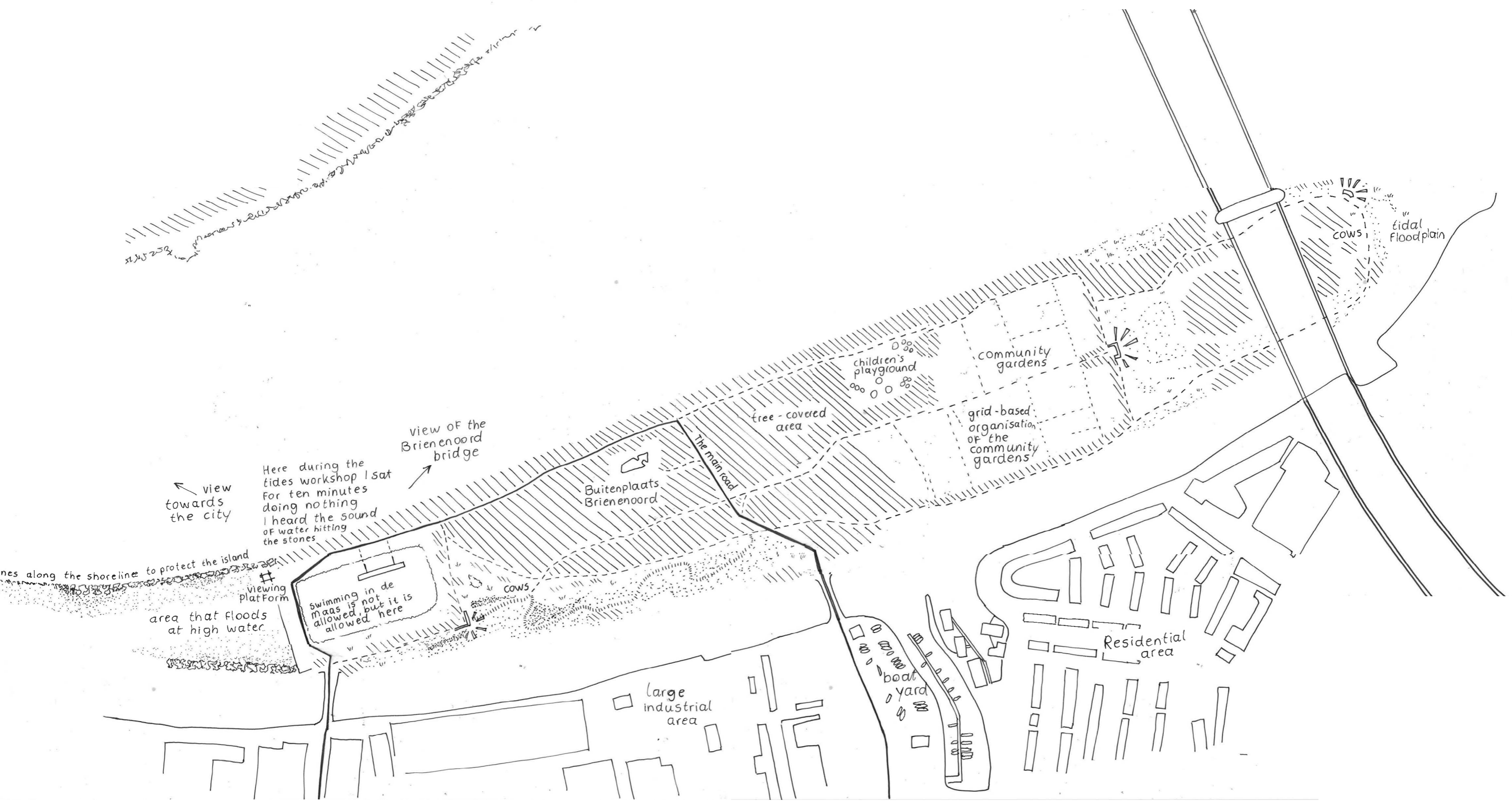
Van Brienenoord Bridge (Meulstee, 2026)

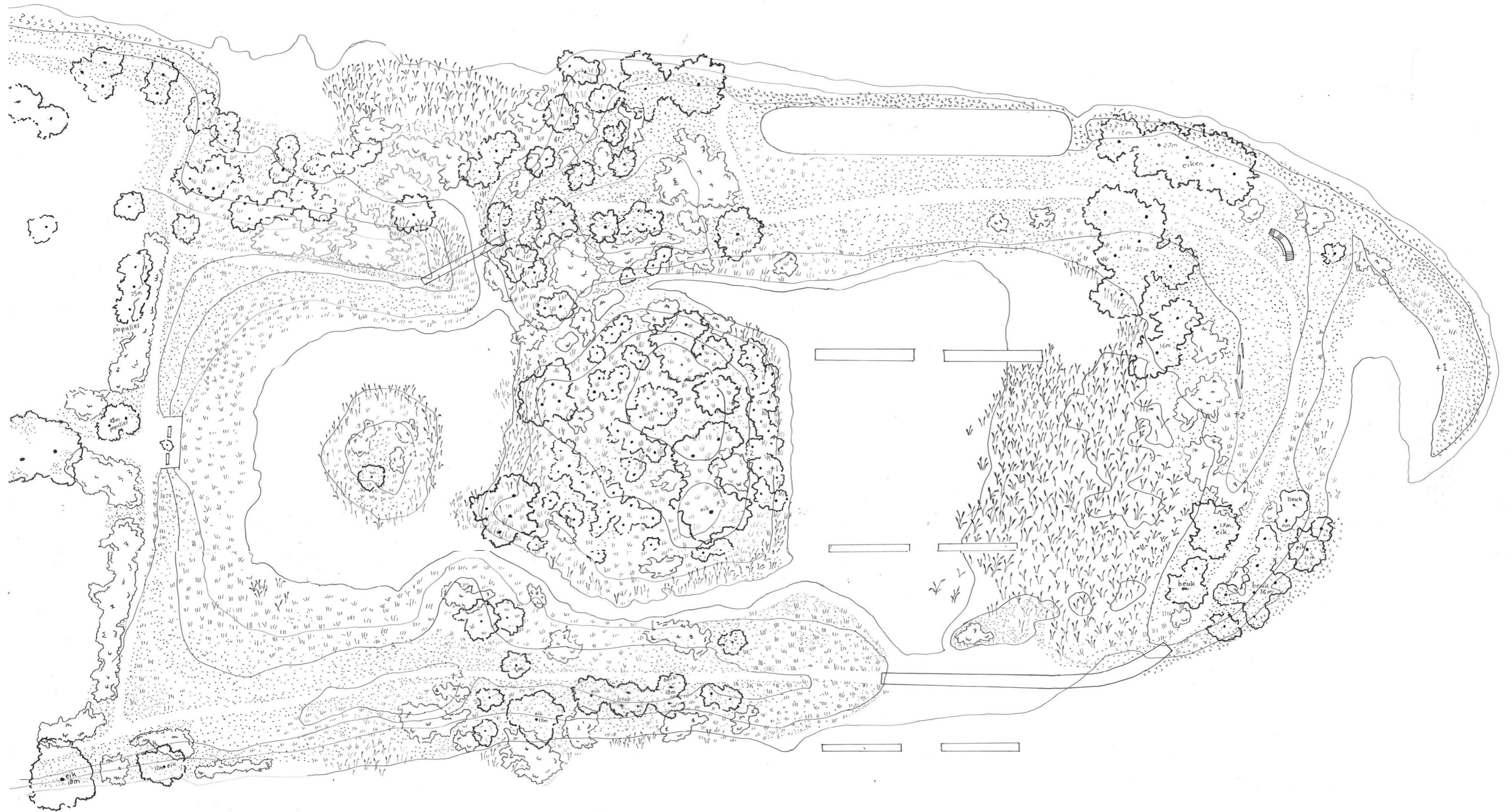
The busiest place in the Netherlands

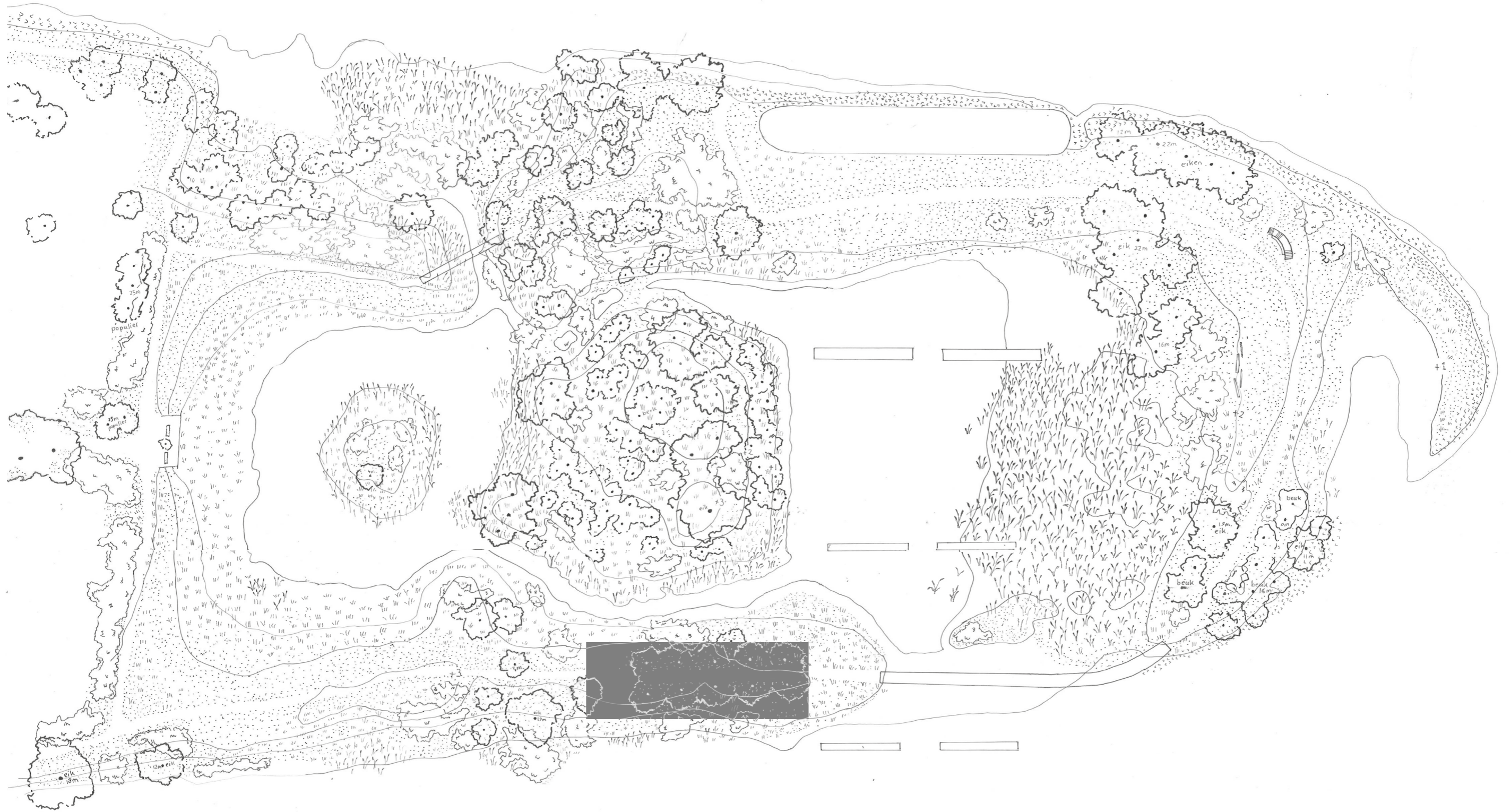
230,000 vehicles per day

150,000 vessels per year

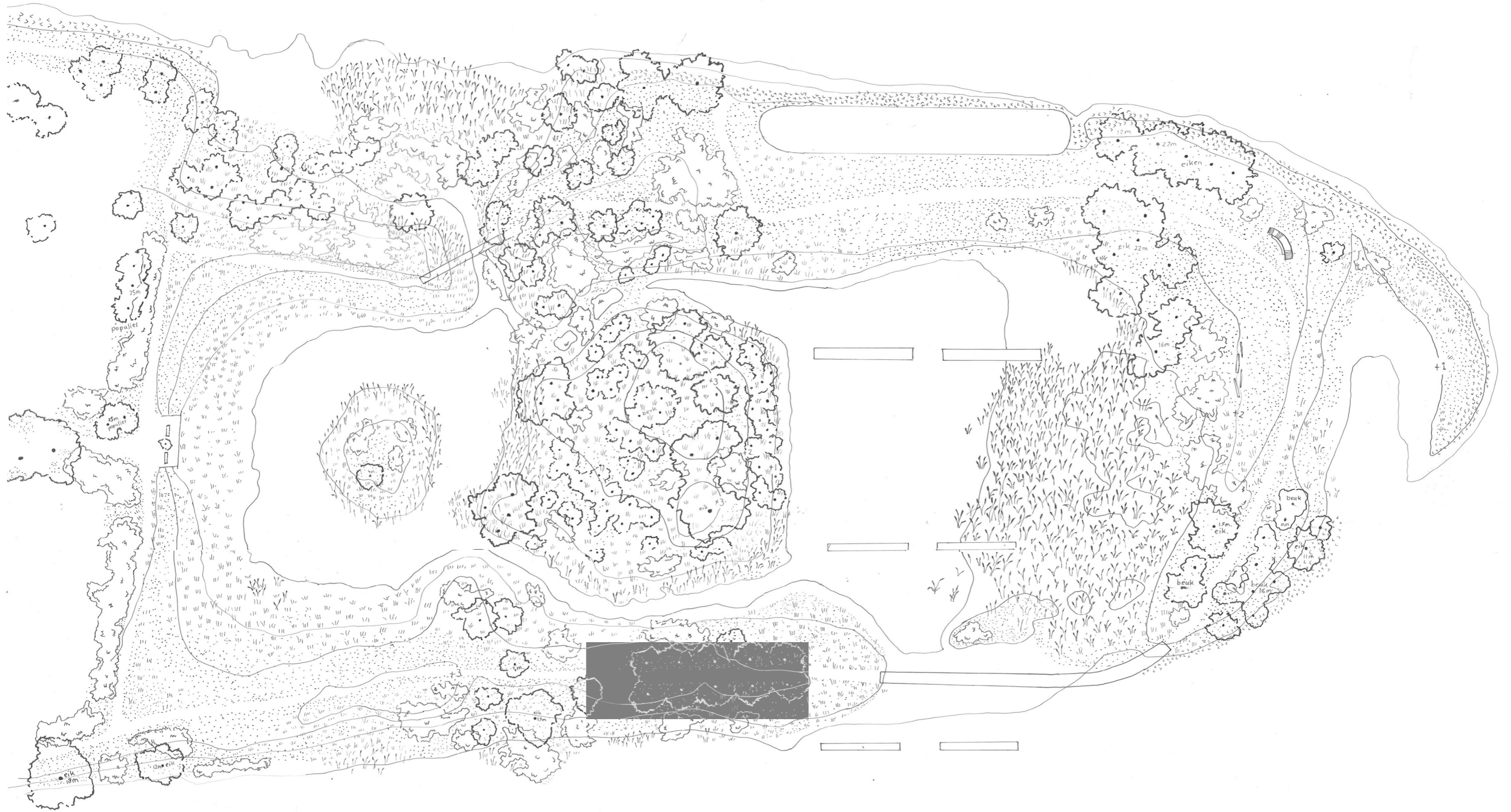


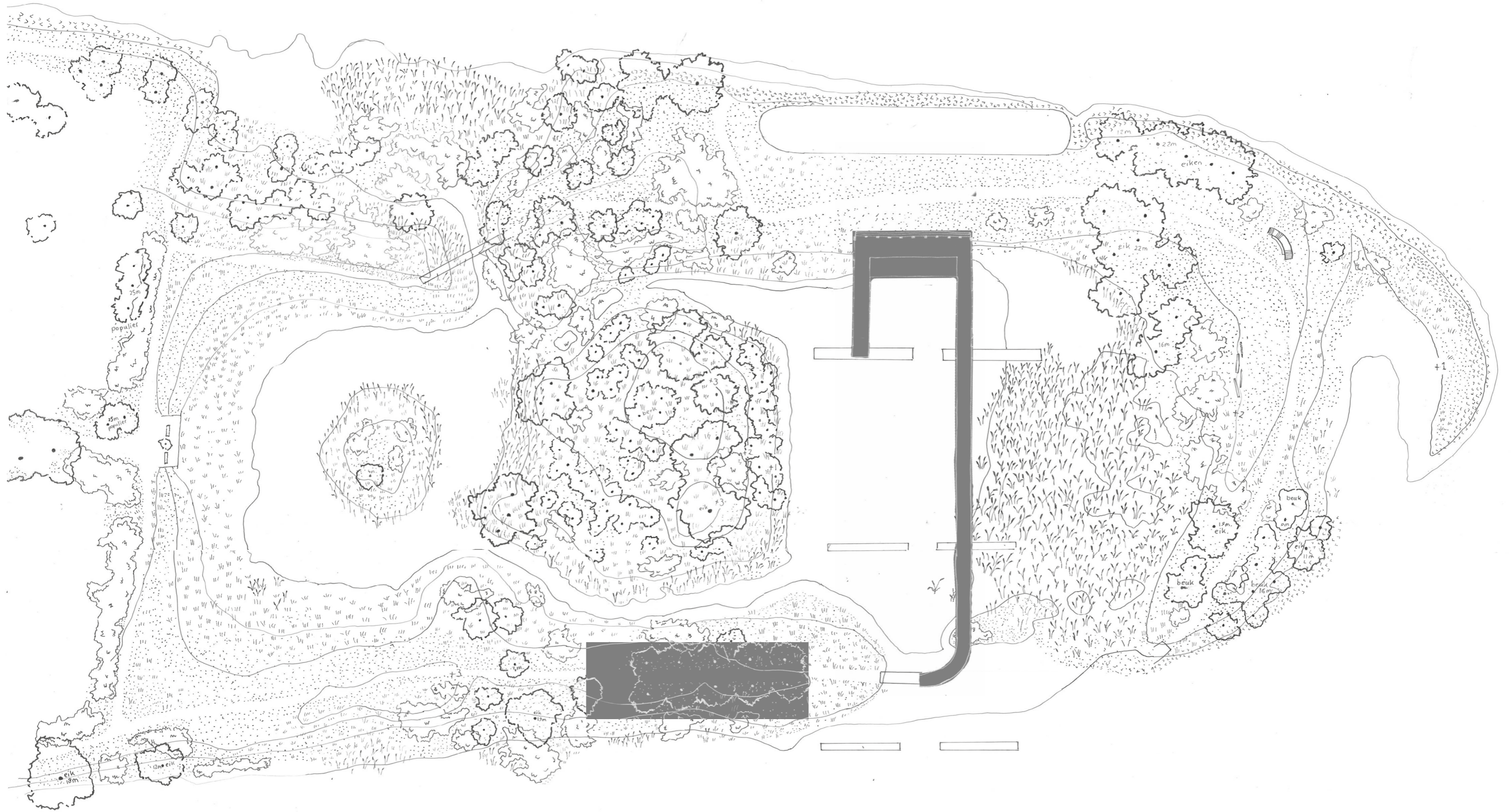




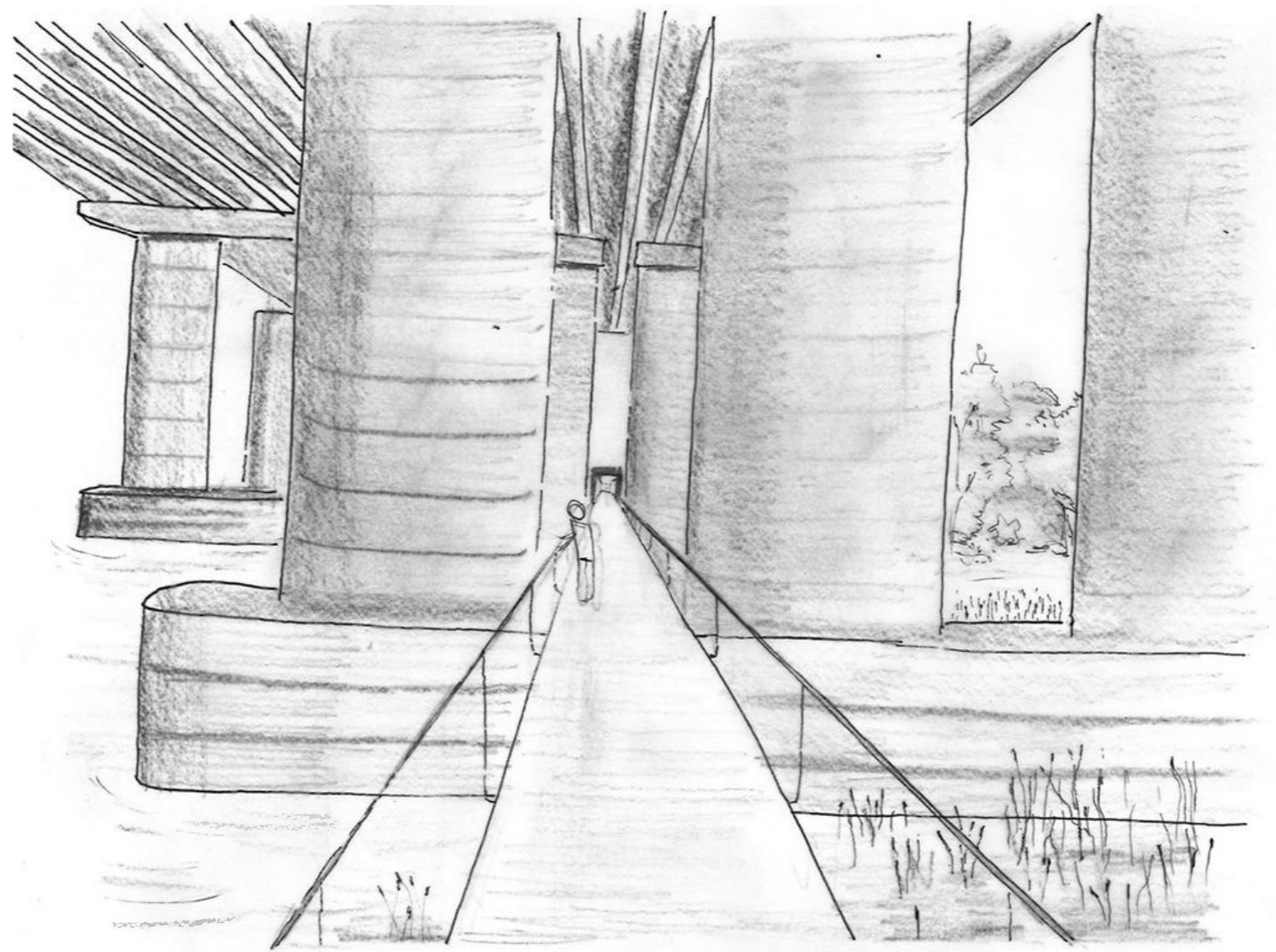






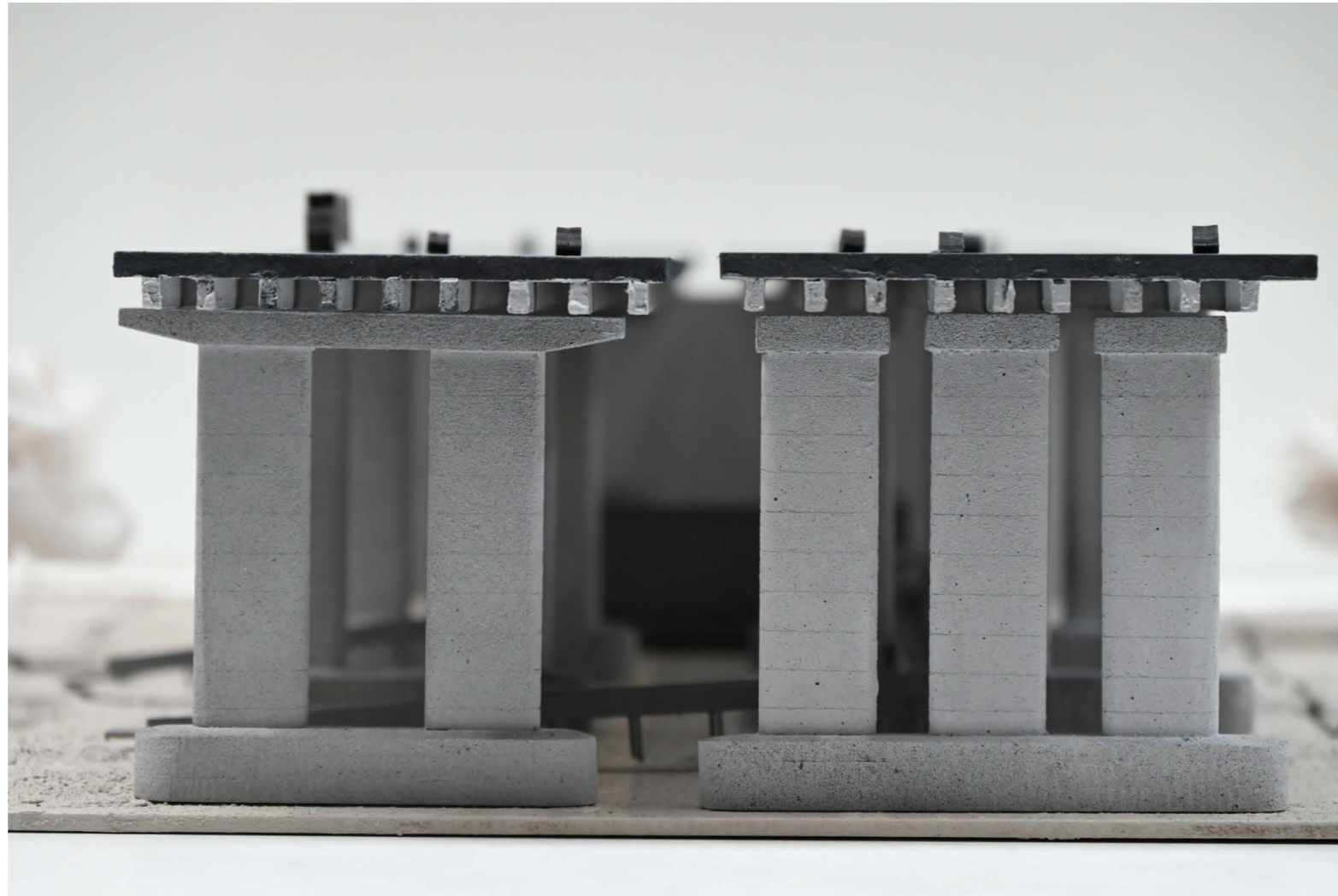








rhythm and repetition



rhythm and repetition

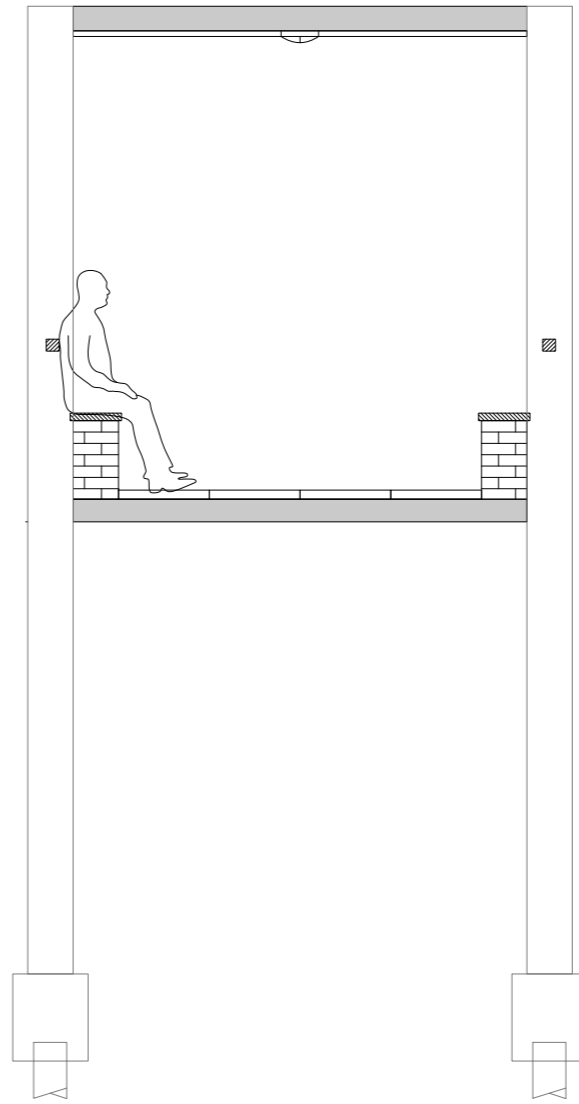
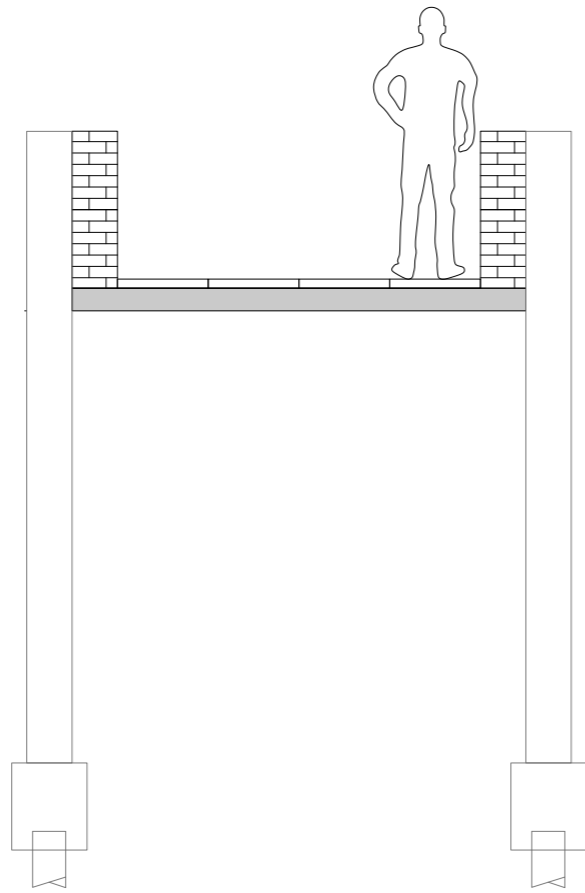


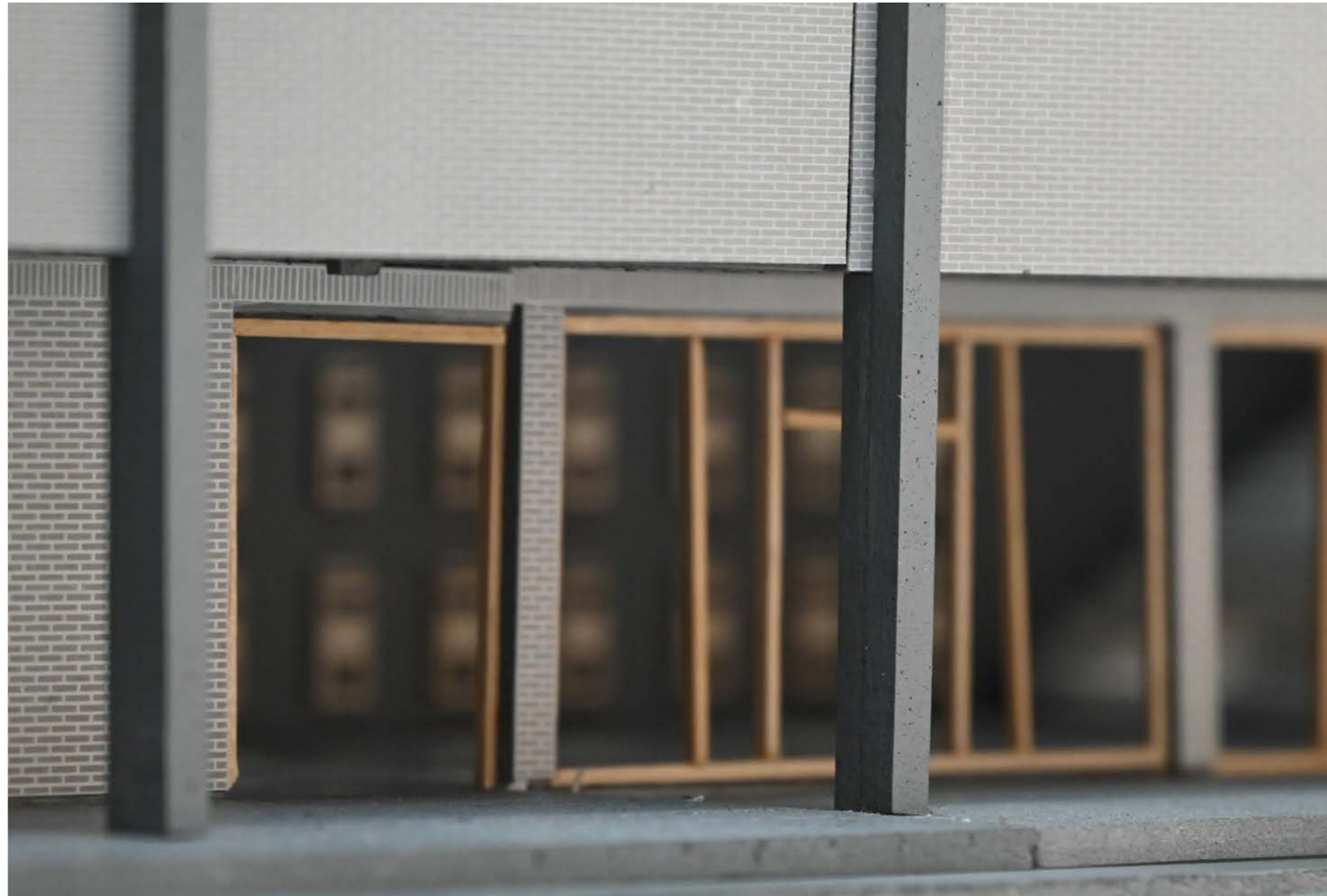
Corridors



Corridor in the Van Berne Abbey

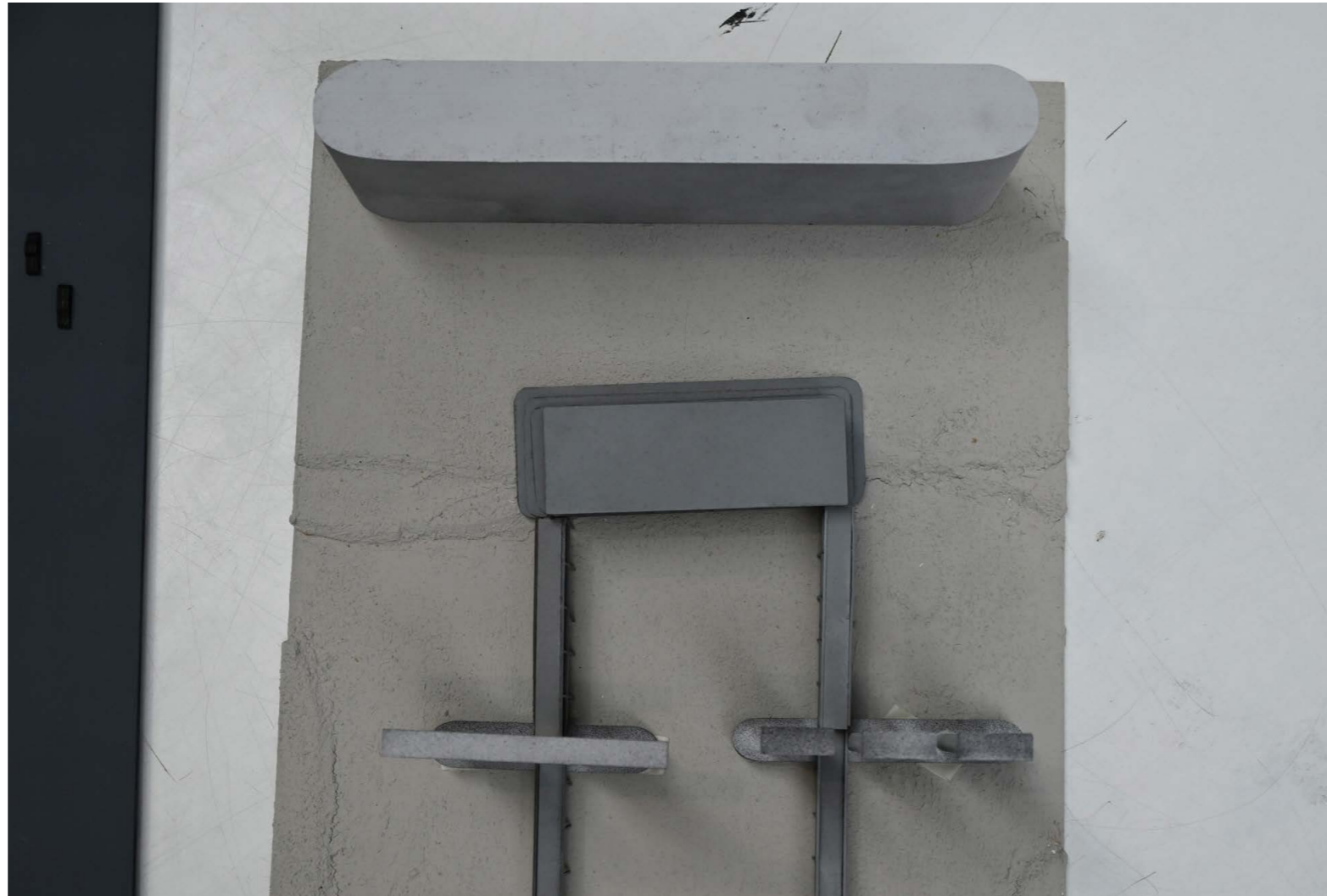




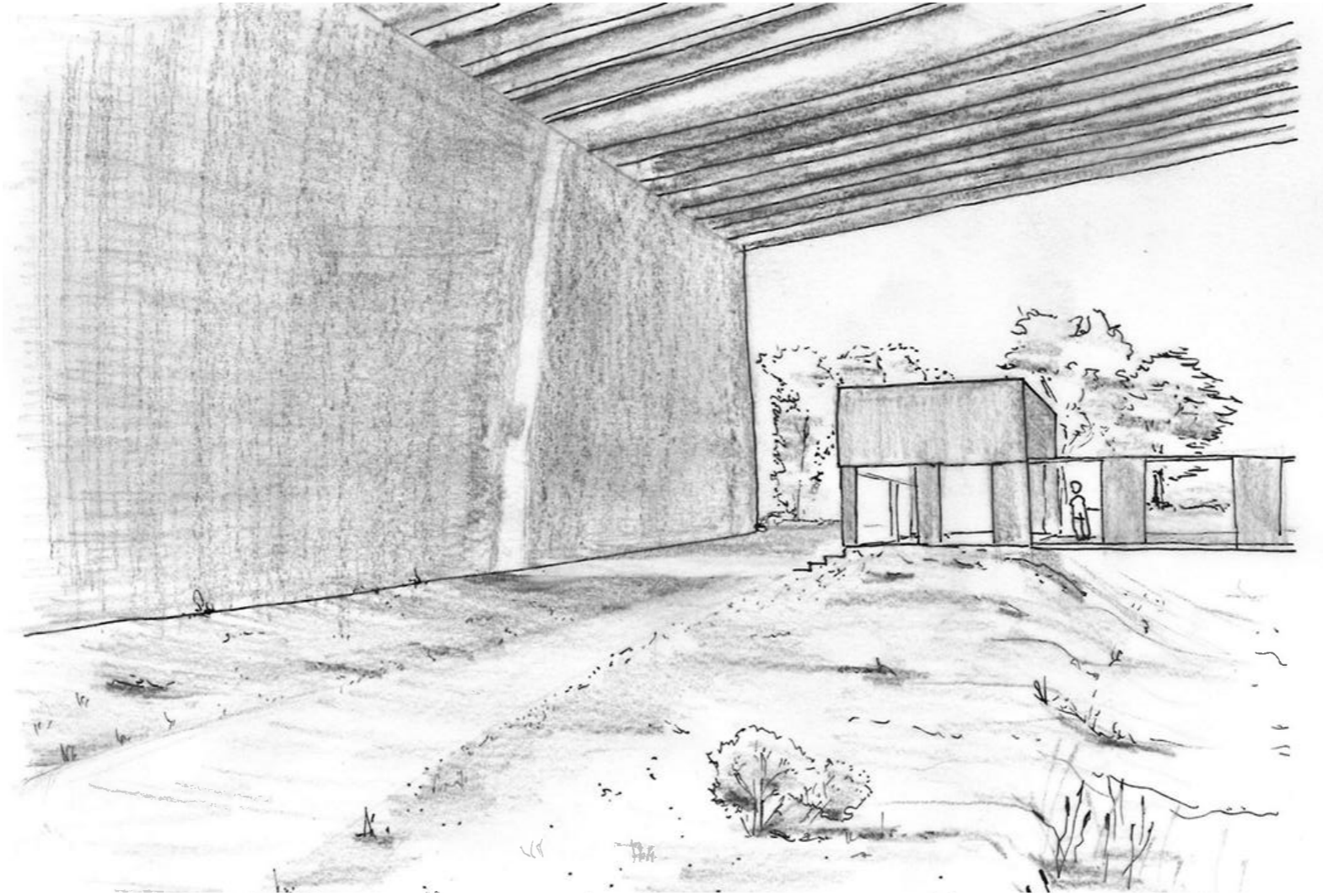


materiality / human scale / rhythm of materials





Top view; House of Boredom facing the bridge wall







Light as clock

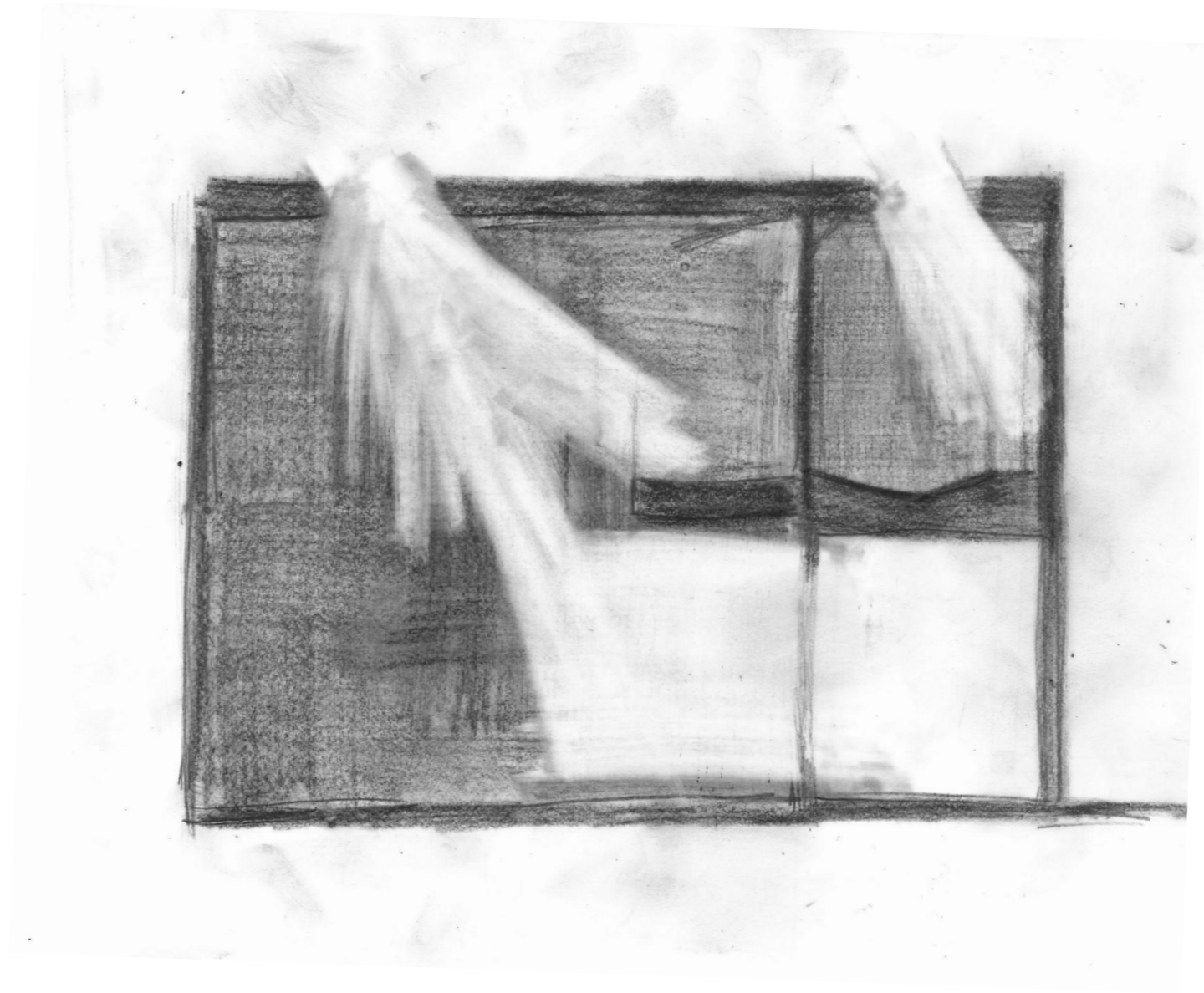


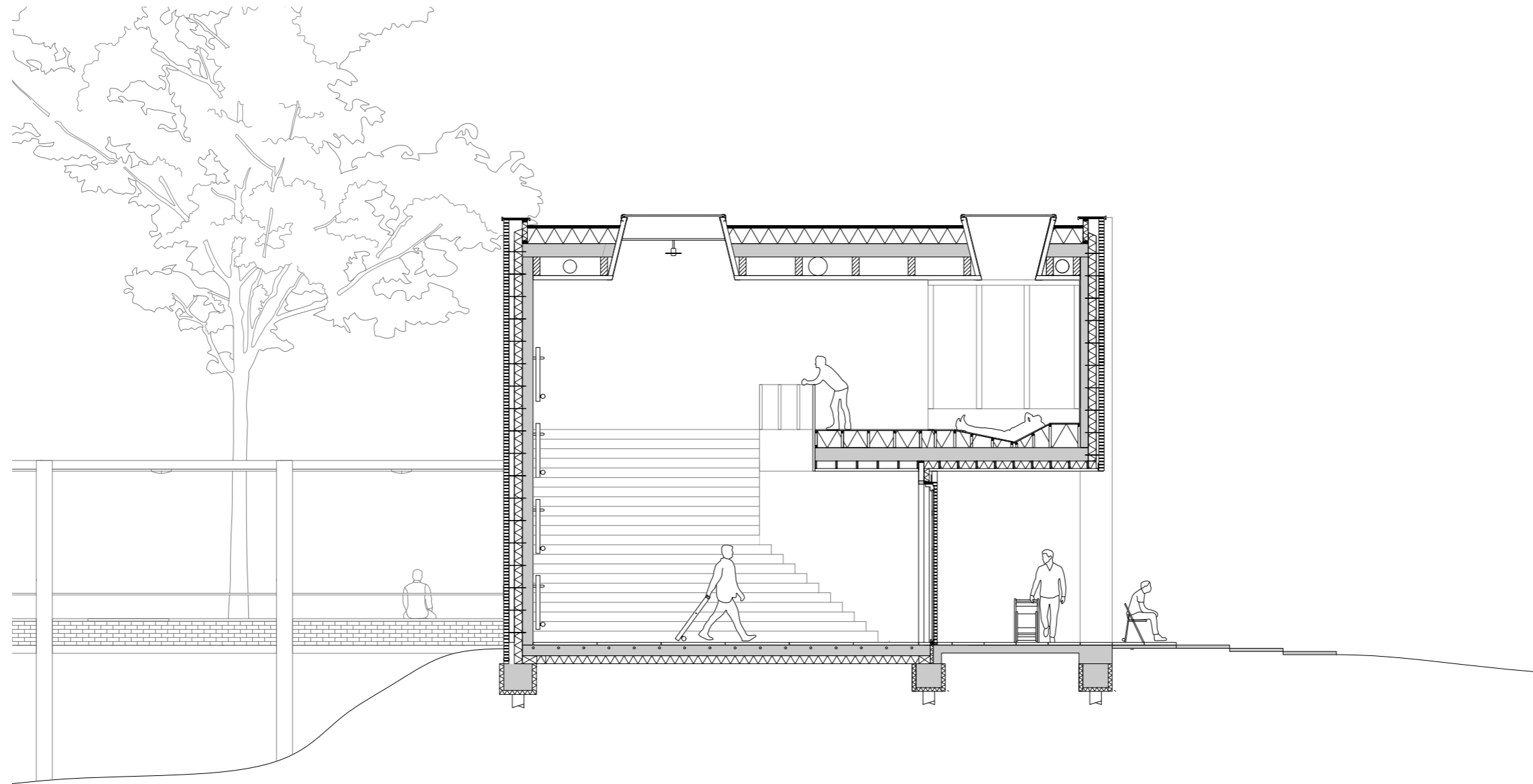


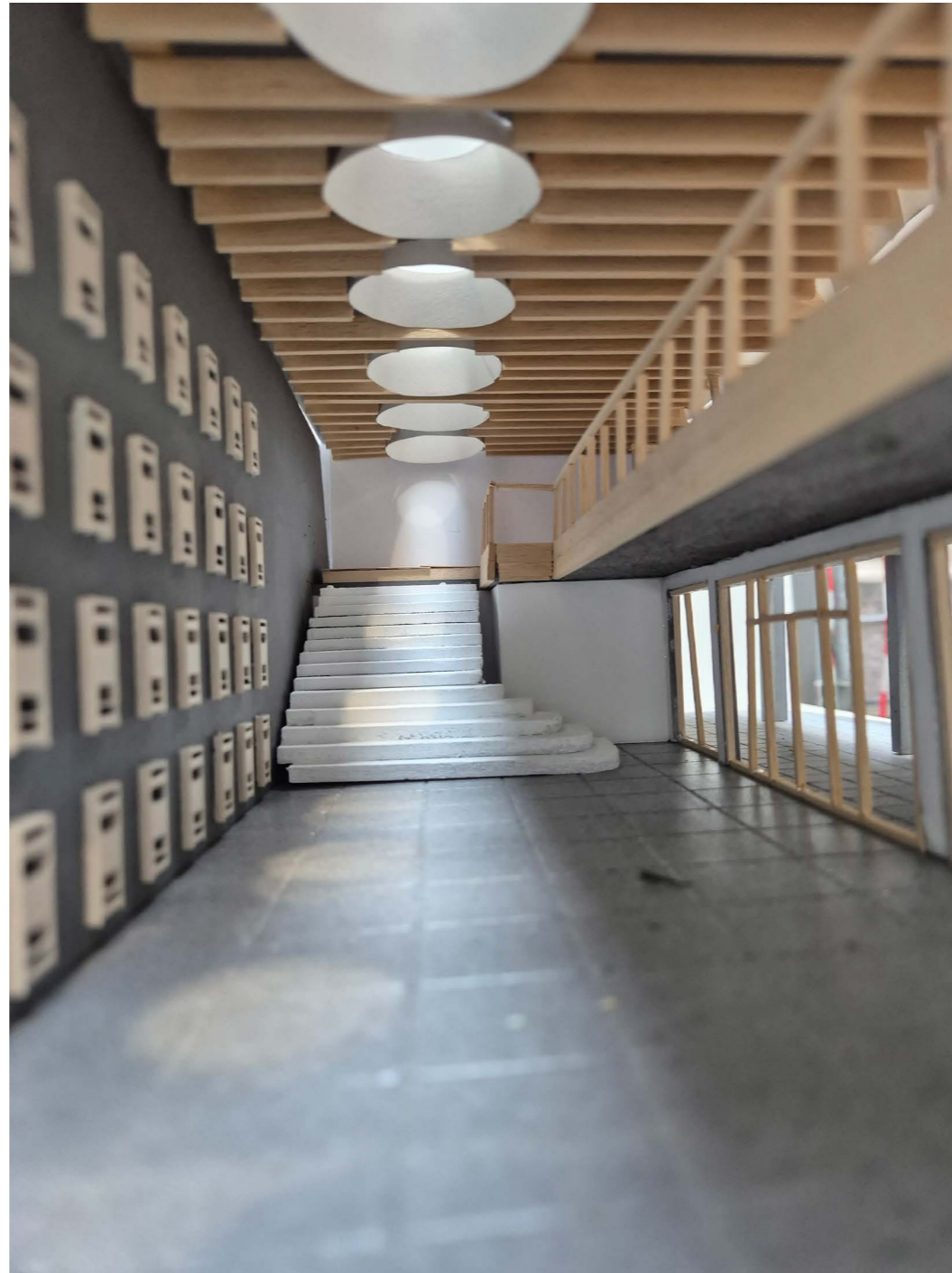




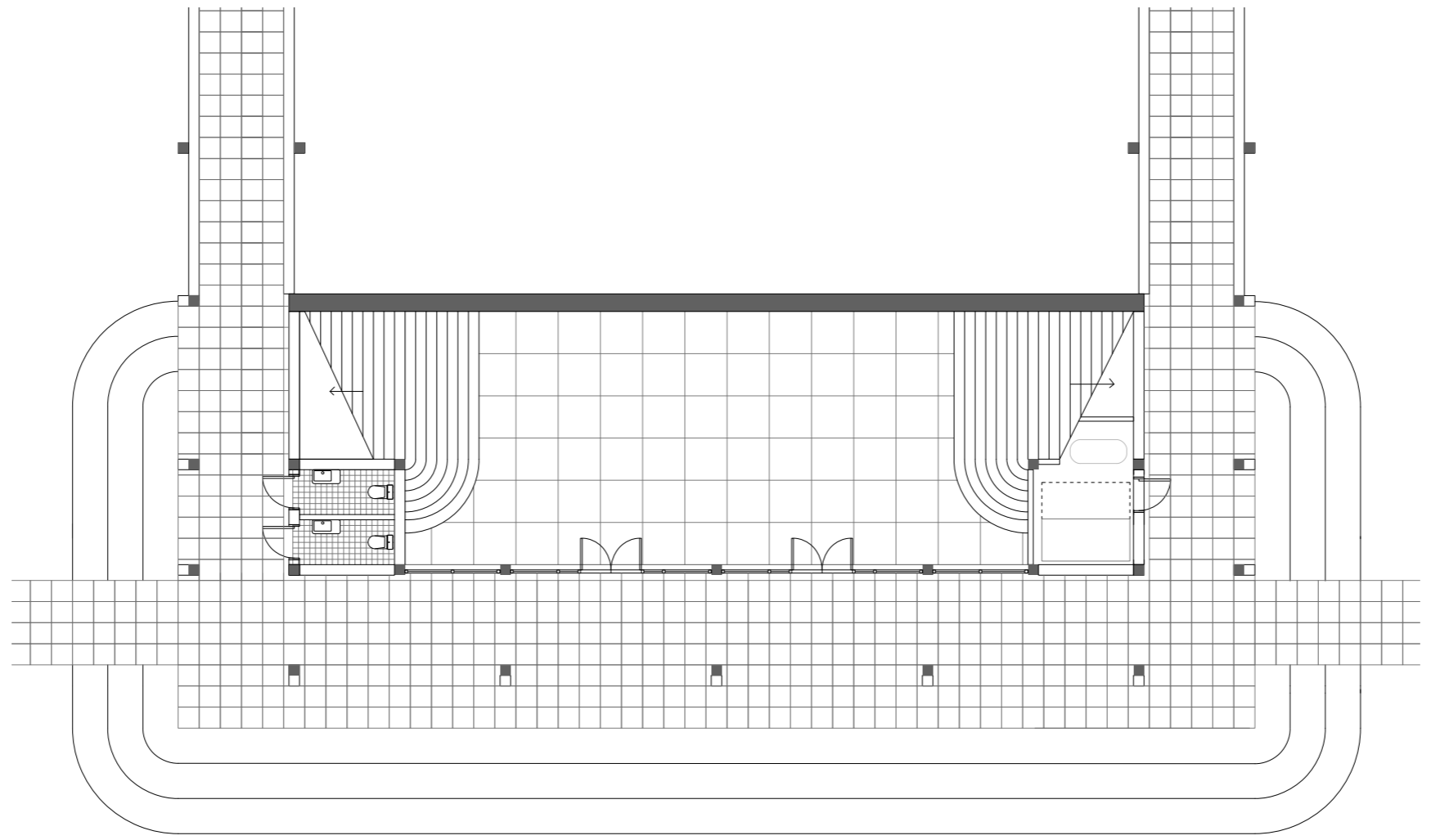
Berne Abbey Church







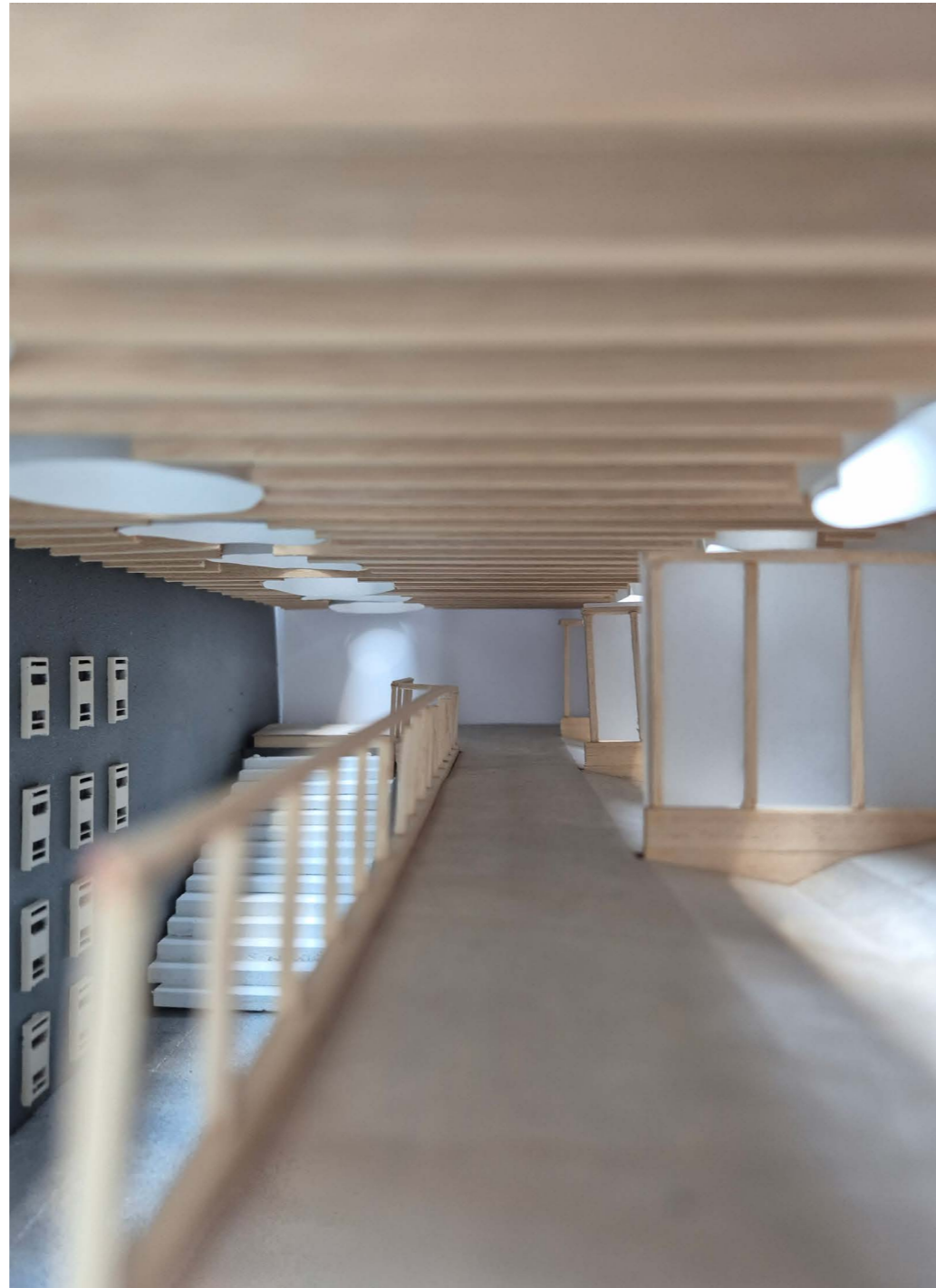
Rhythm in the roof



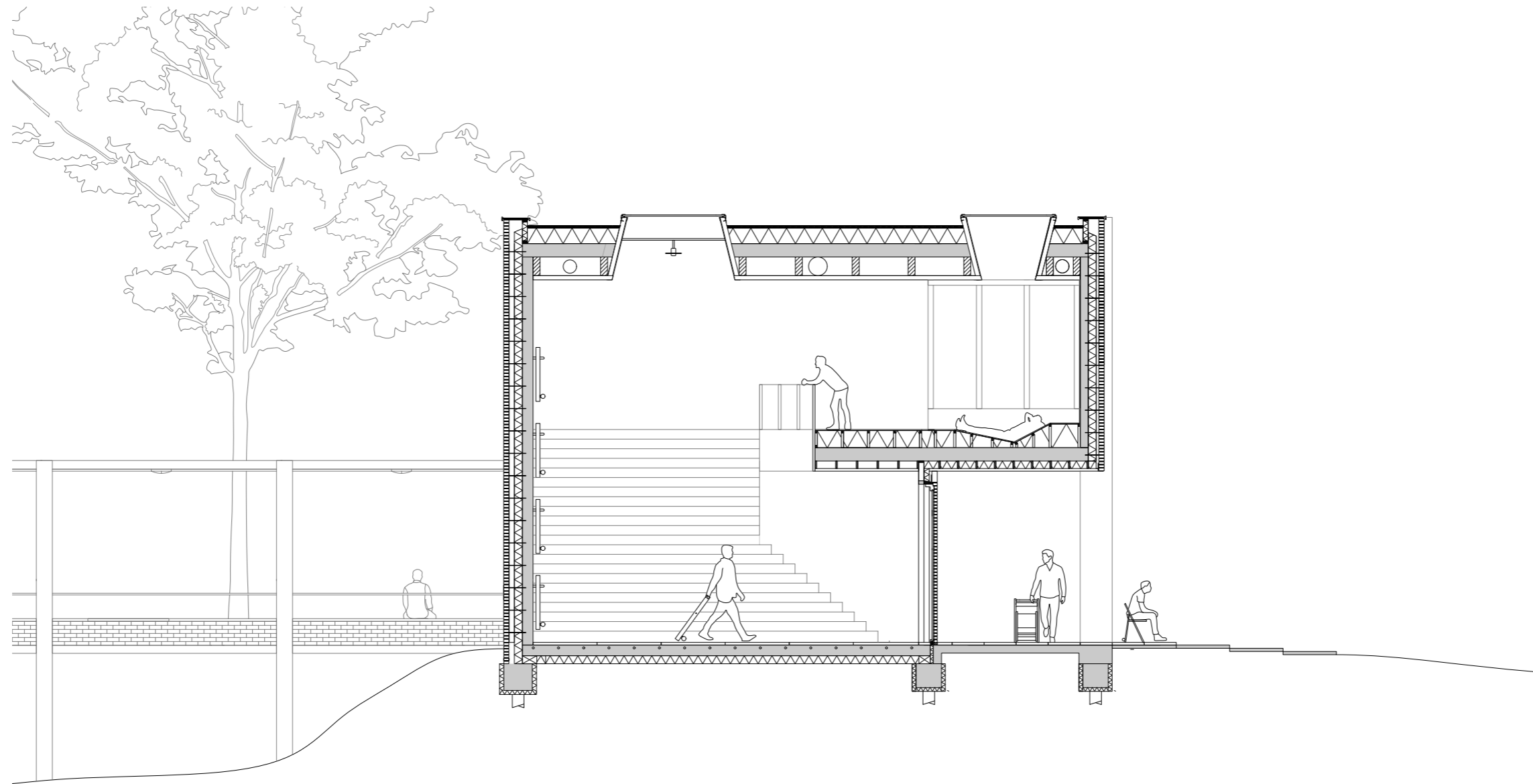
Floorplan ground floor



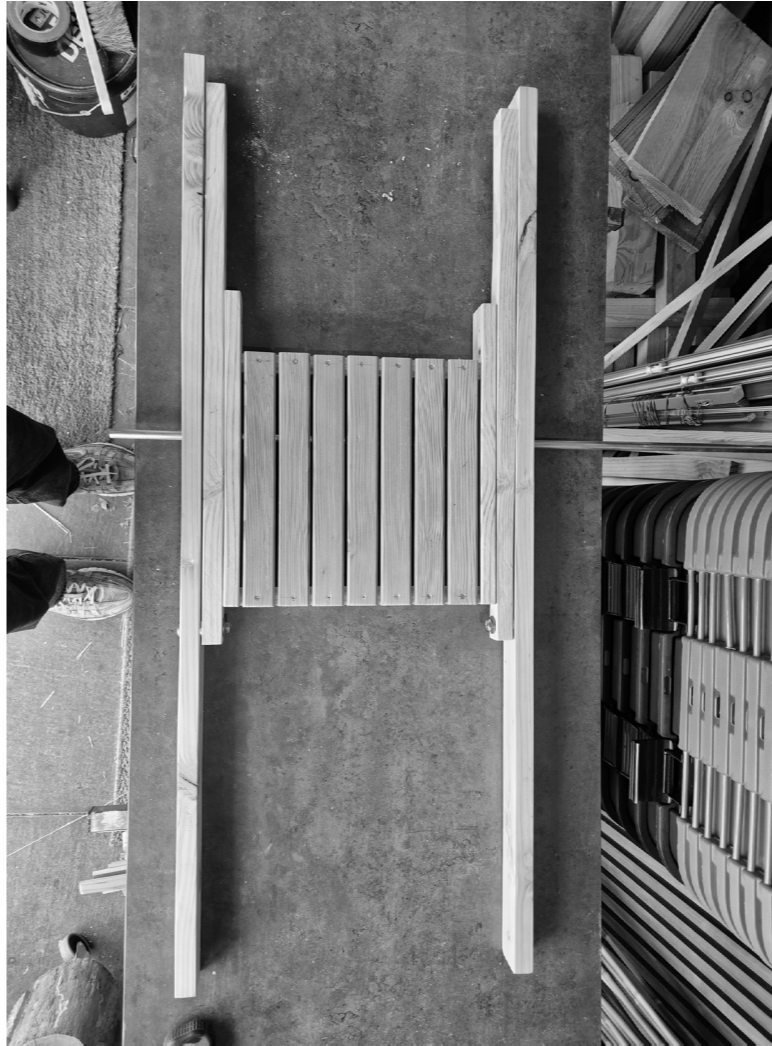
Inspiration from traditional Japanese architecture (Houzz, 2026)



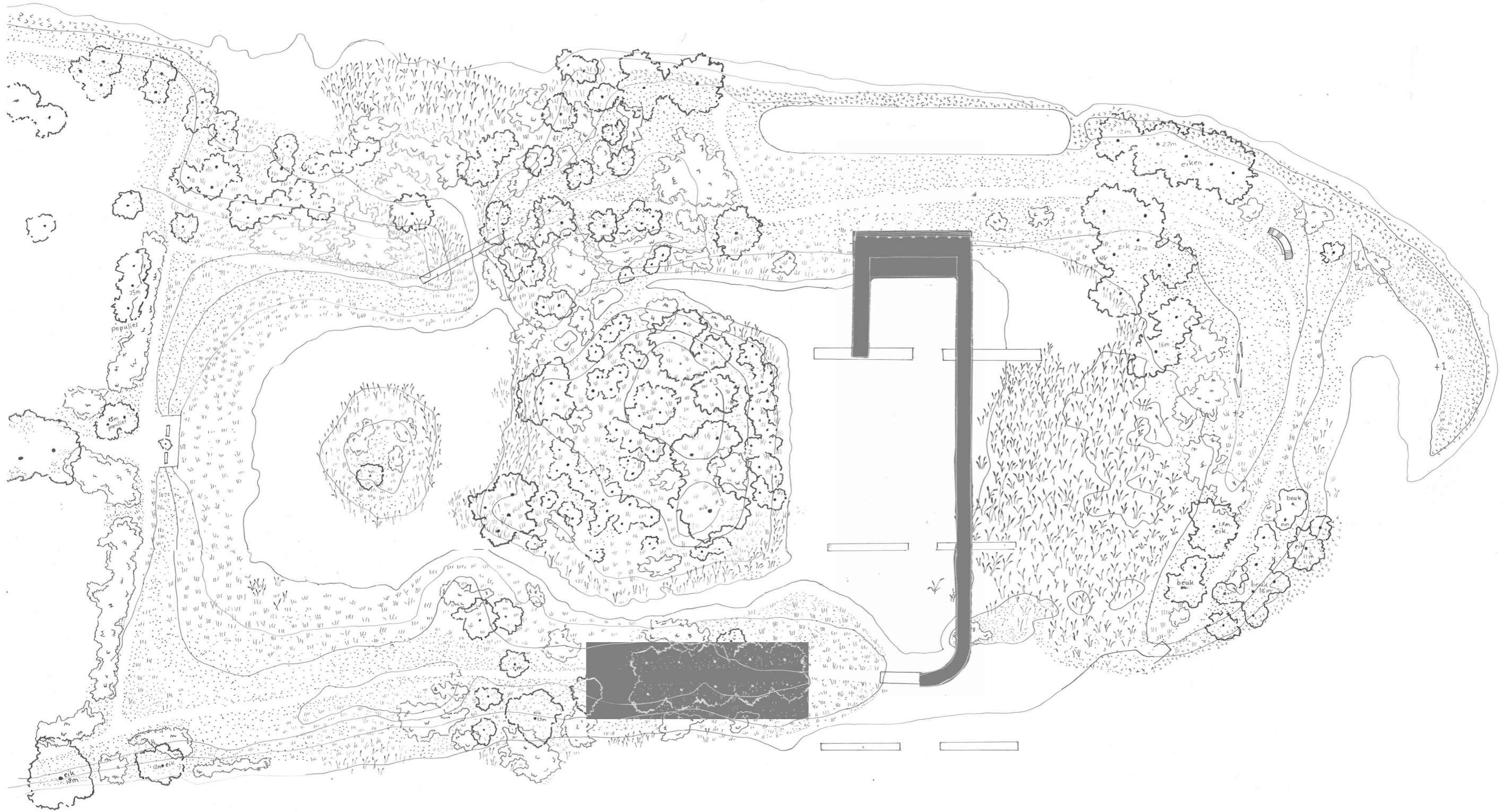
Wooden floor with semi-permeable boundaries

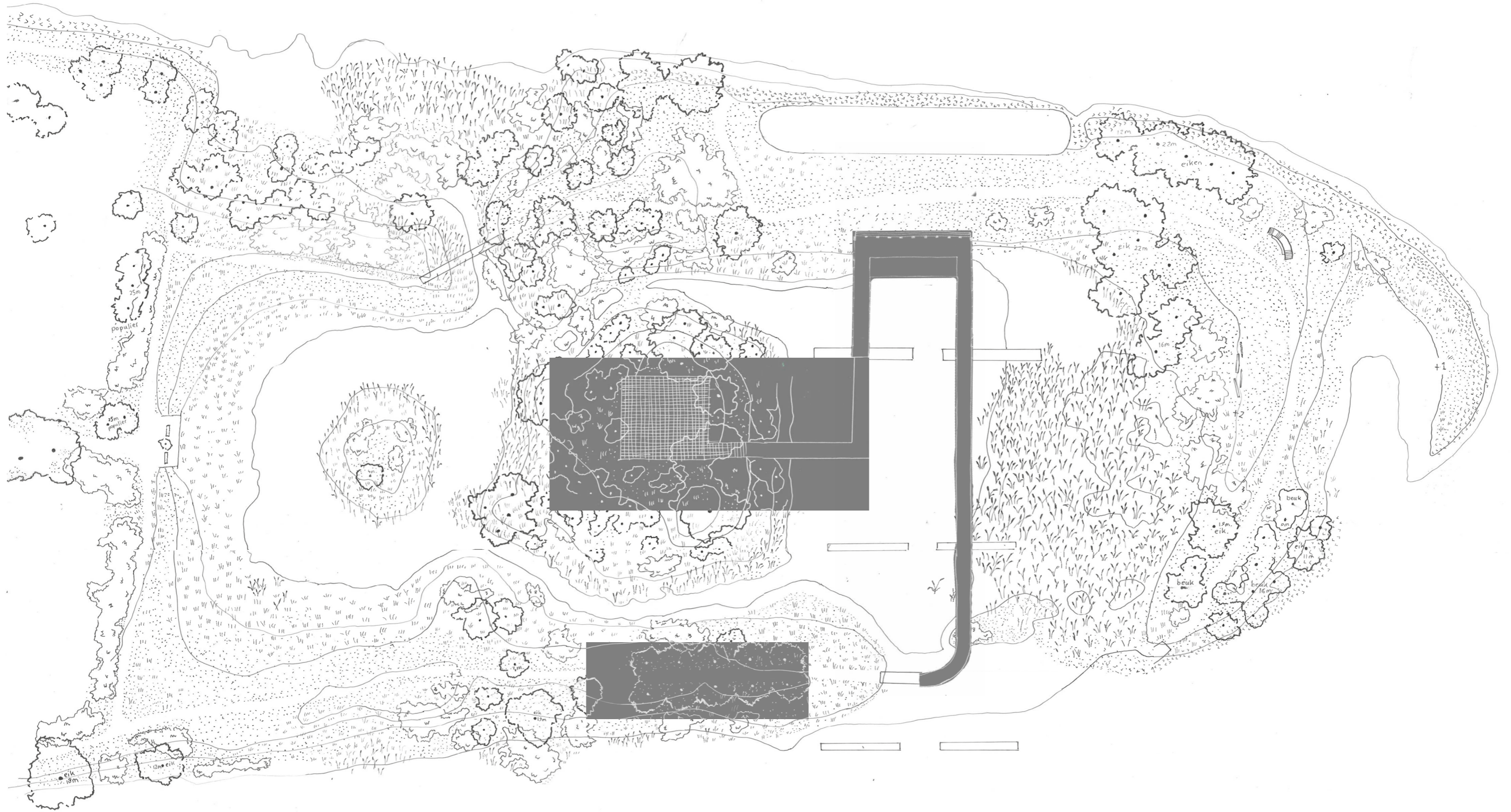


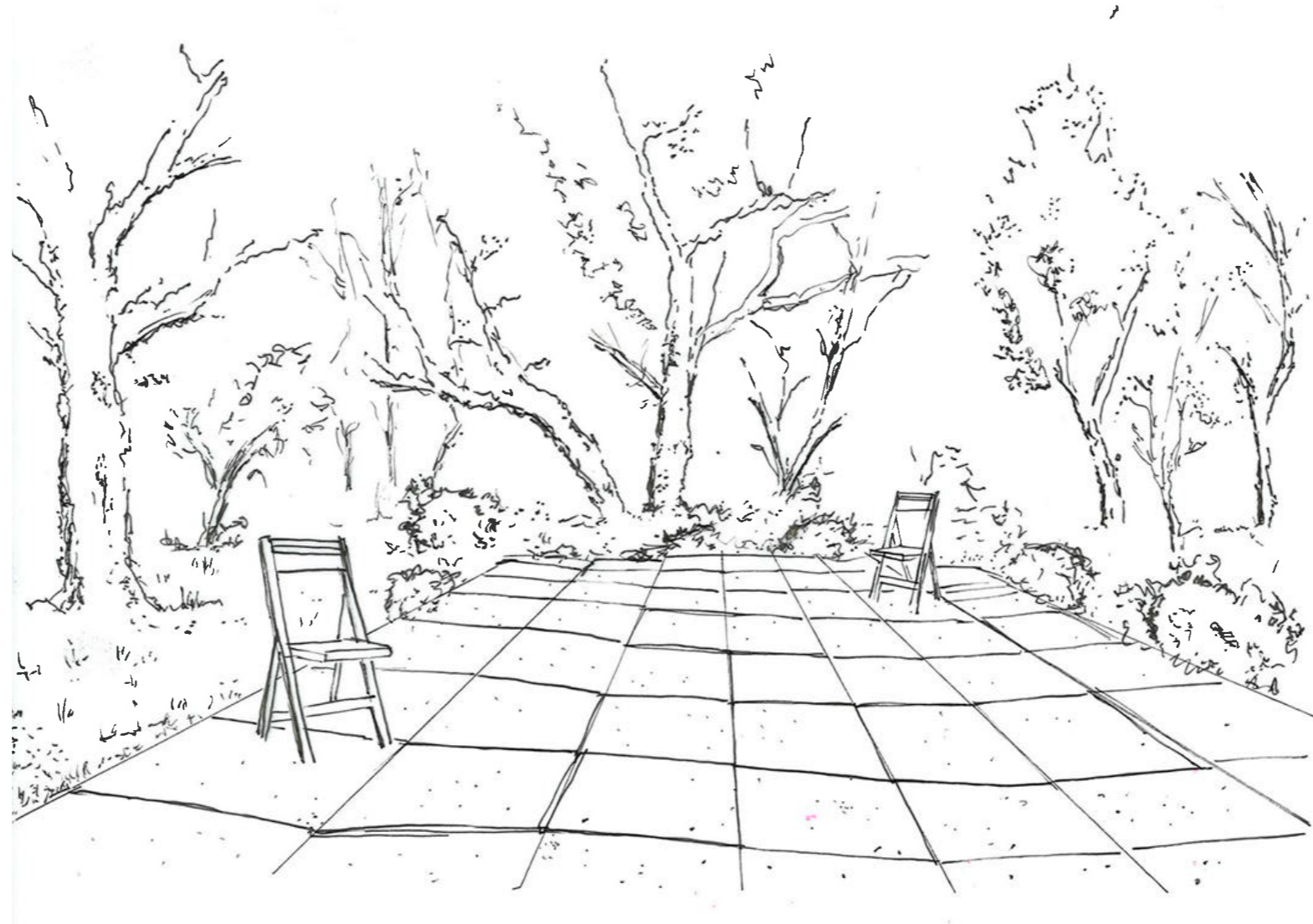


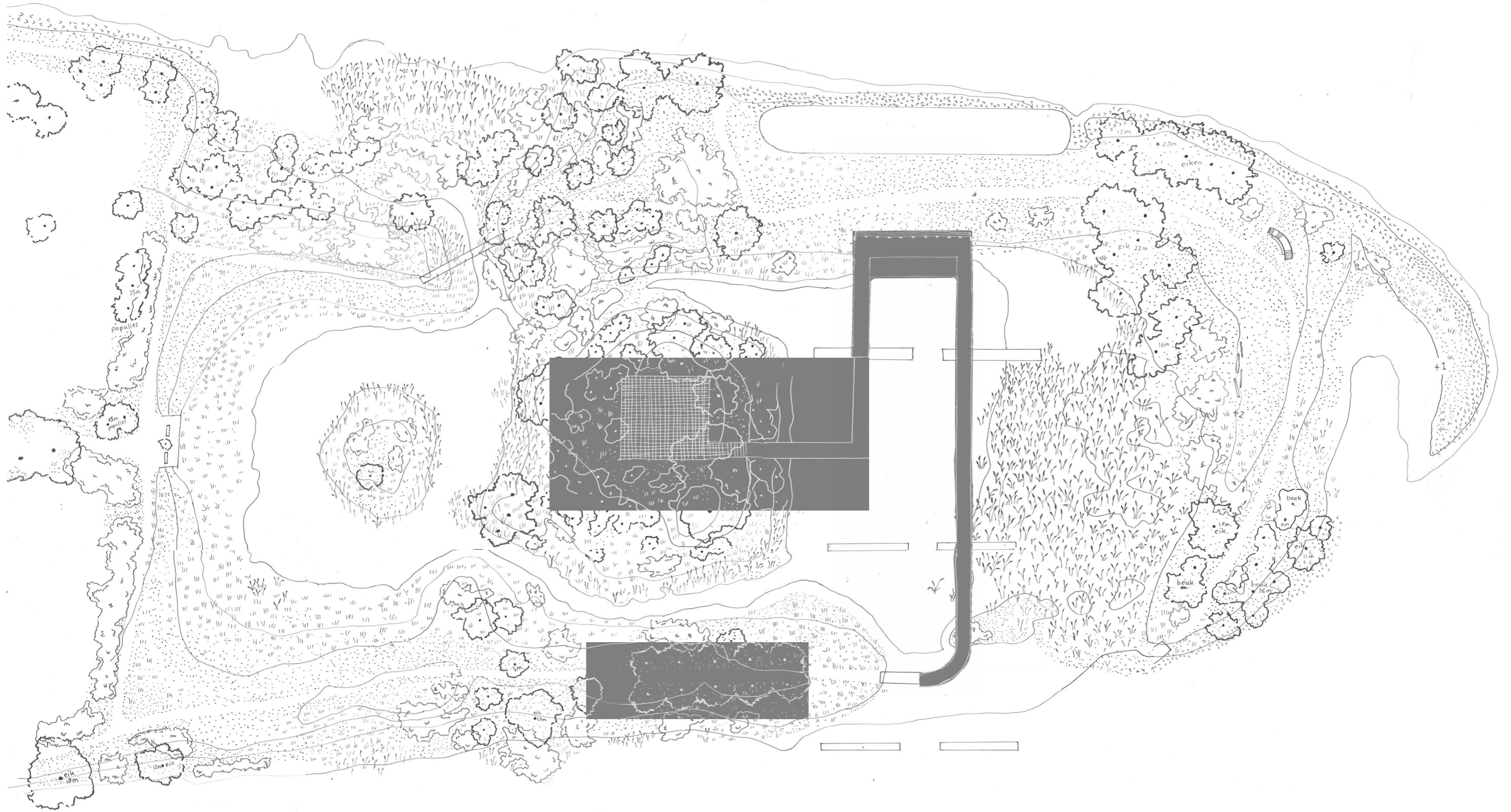


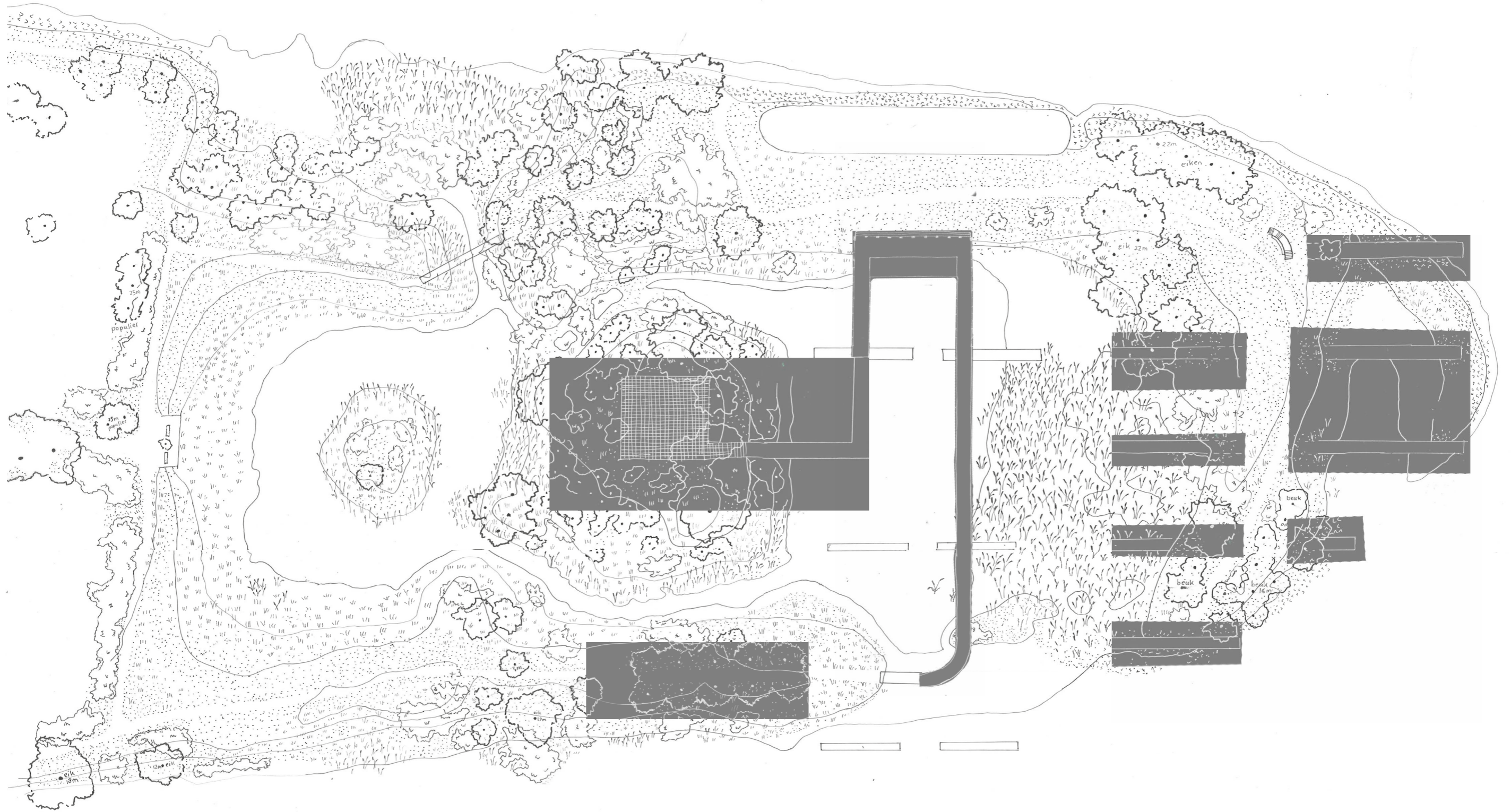


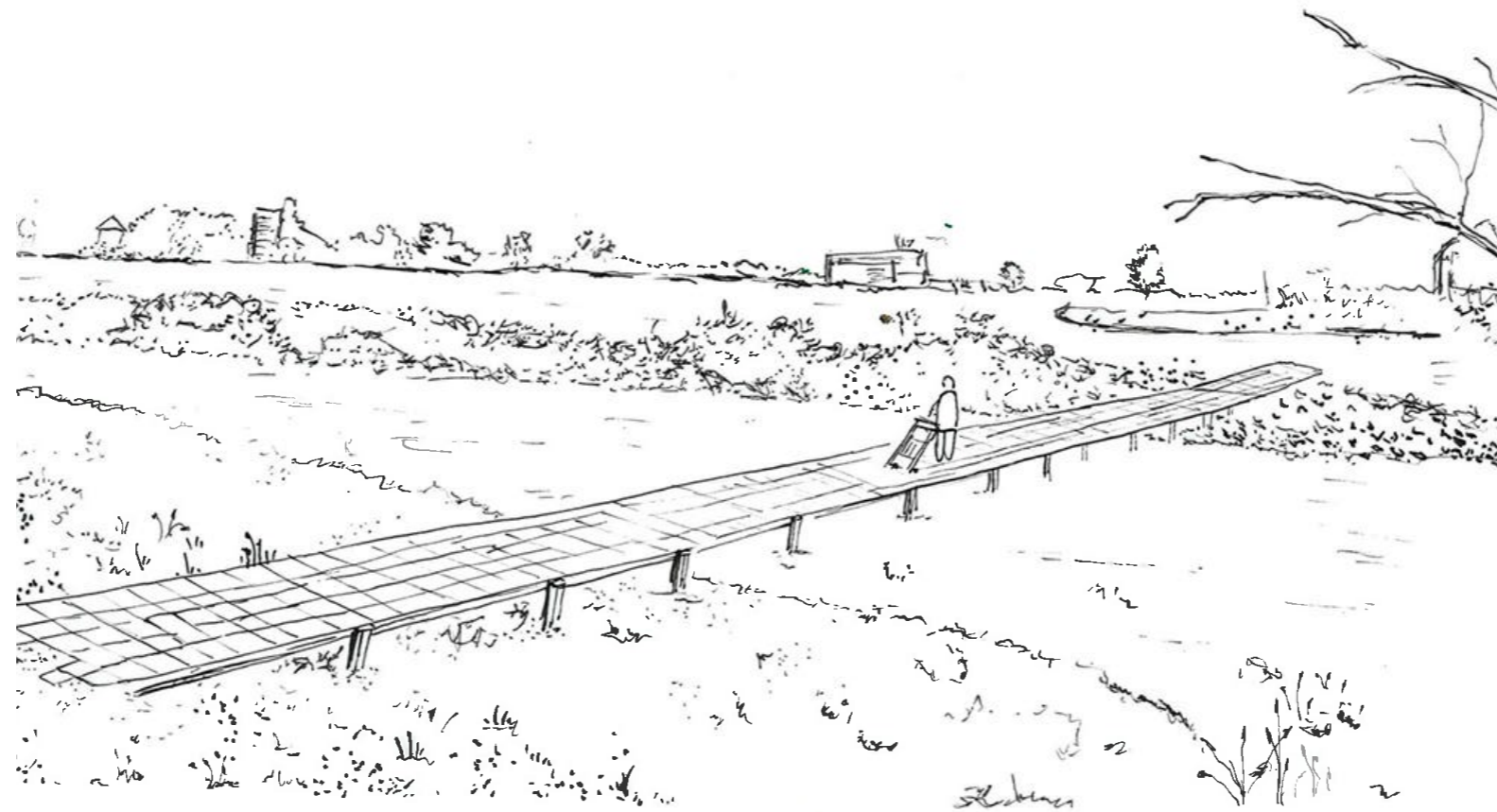












Conclusion

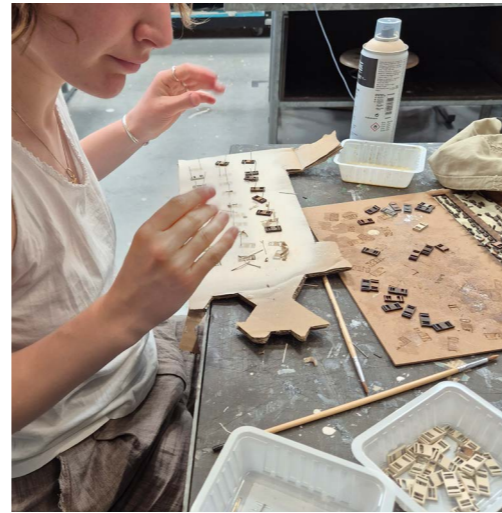
- Enhancing rhythm and repetition.
- Encouraging staying rather than moving towards a specific goal.
- Using tactile materials.
- Engaging the senses, like sound.
- Creating a sense of estrangement from everyday urban life.

Reflection

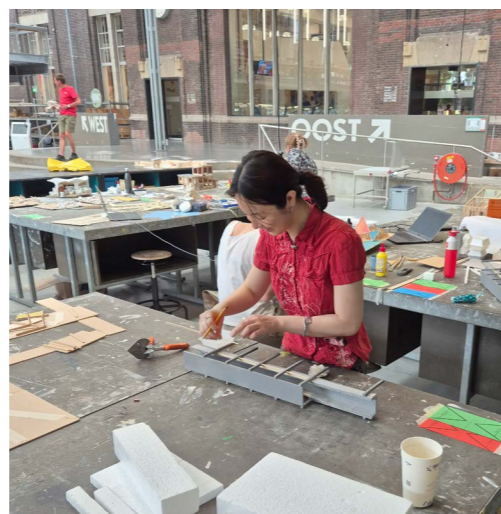
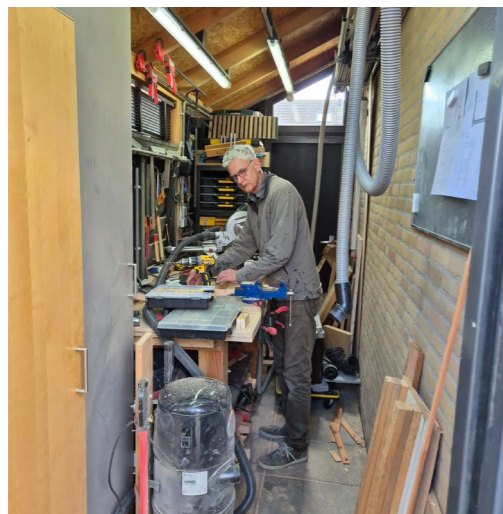
Design process; quite challenging to develop the spatial design while defining an entirely new typology

A typology that has a right to exist

Advice for others; visit existing places like monastries and embrace the context



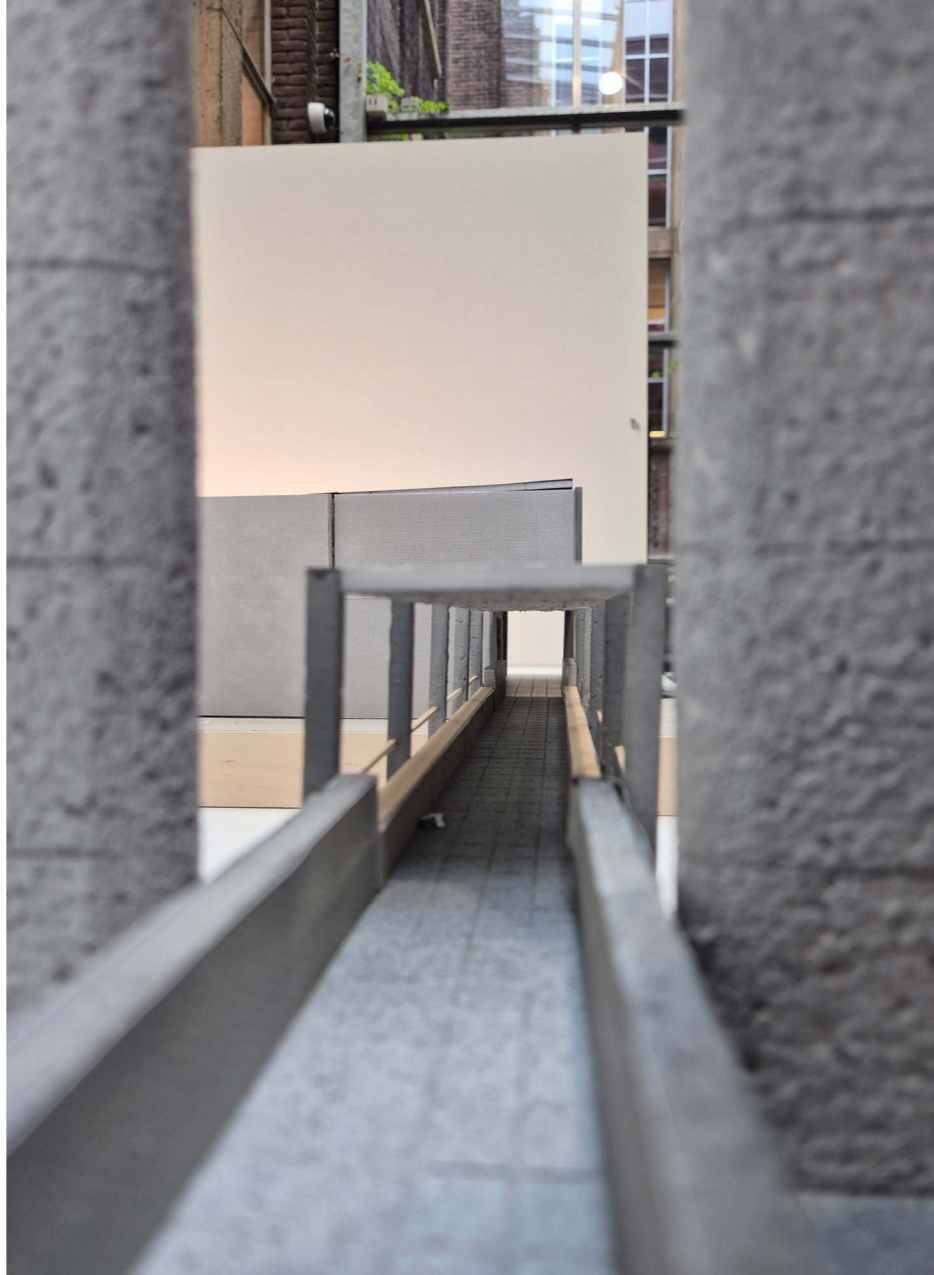
Met dank aan: Veerle, Lianne, Susanne, Iza, Lorenzo, Louise, Vivian, Fatima, Elena, Romy en mijn ouders













Byung- Chul Han. (2022). Vita contemplativa. De Nieuwe Wereld.

Meulstee, L. (2026.). [Photograph of traffic on the A16 motorway corridor] [Photograph]. Oeververbindingen. <https://oeververbindingen.nl/maatregelen/a16-van-brienoordcorridor-en-own/>

Houzz. (2026) : Grands principes de la maison traditionnelle japonaise. (z.d.). Houzz. <https://www.houzz.fr/magazine/architecture-grands-principes-de-la-maison-traditionnelle-japonaise-stsetivw-vs~31993879>