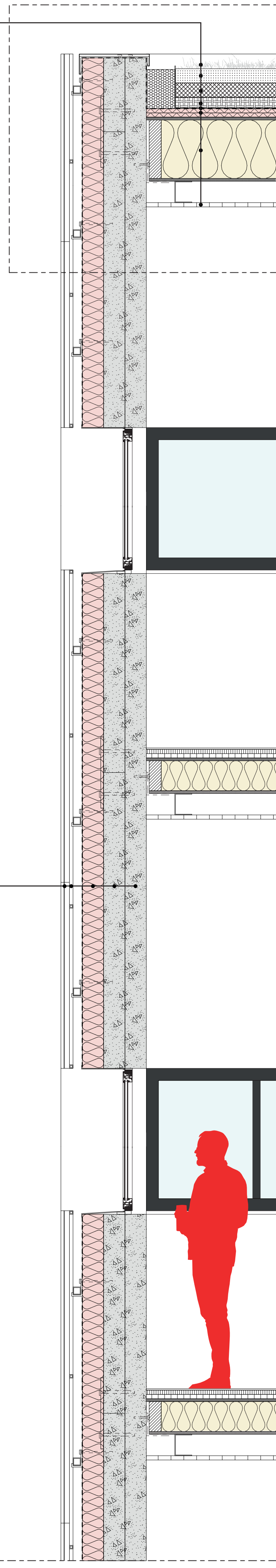
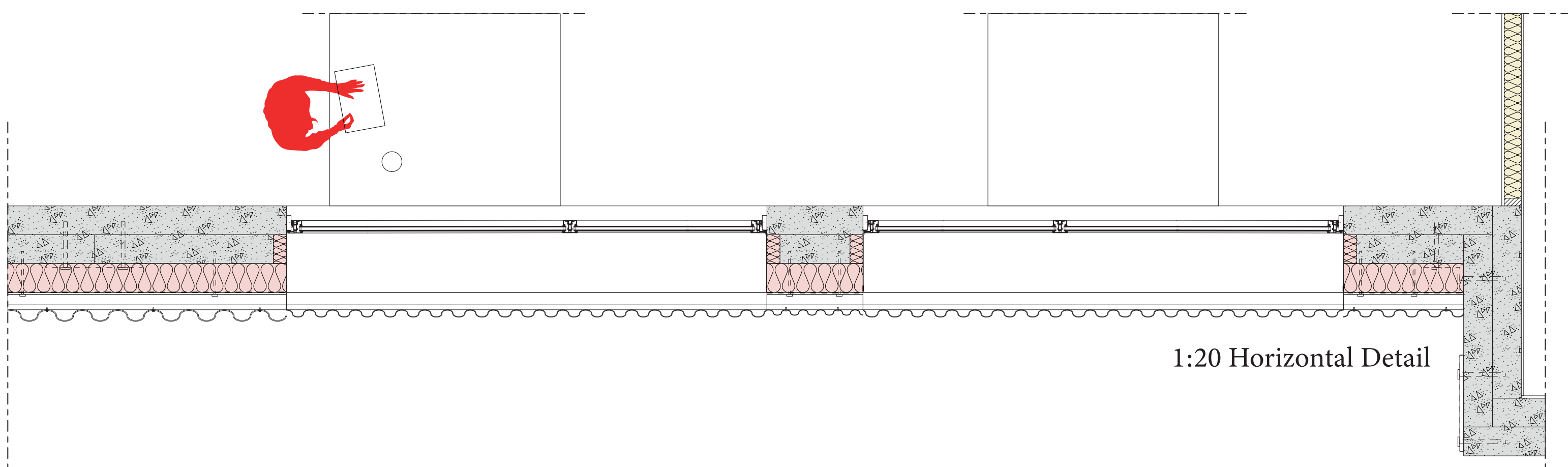


1:20 Elevation

- Sedum
- Substrate, 100 mm
- Water retention layer, 100 mm
- Drainage layer, 75 mm
- Waterproof layer
- Guiding layer, 60 mm
- Wooden sandwich panel insulated with shredded paper insulation, 450 mm
- Lowered ceiling for installations, 180 mm

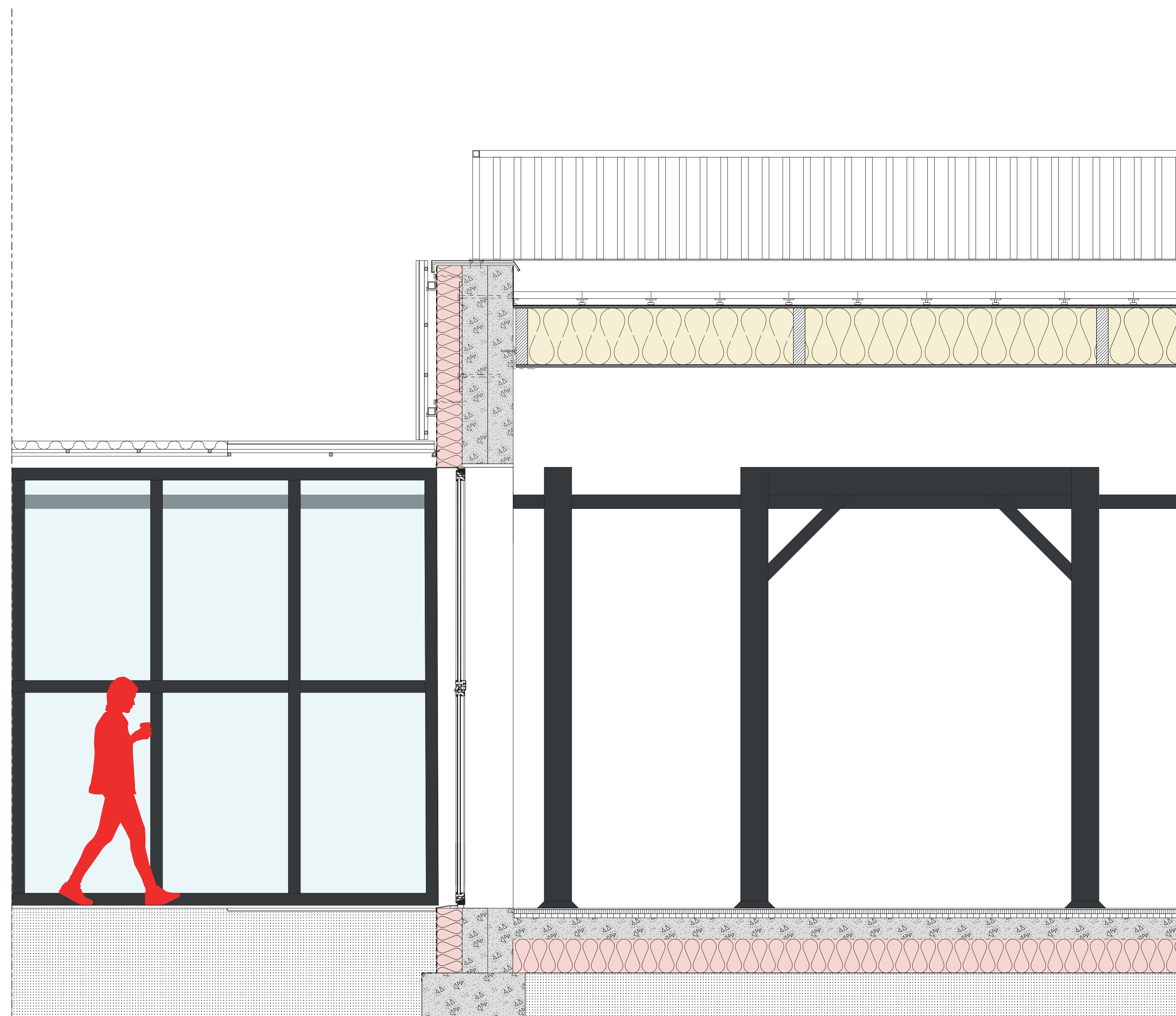
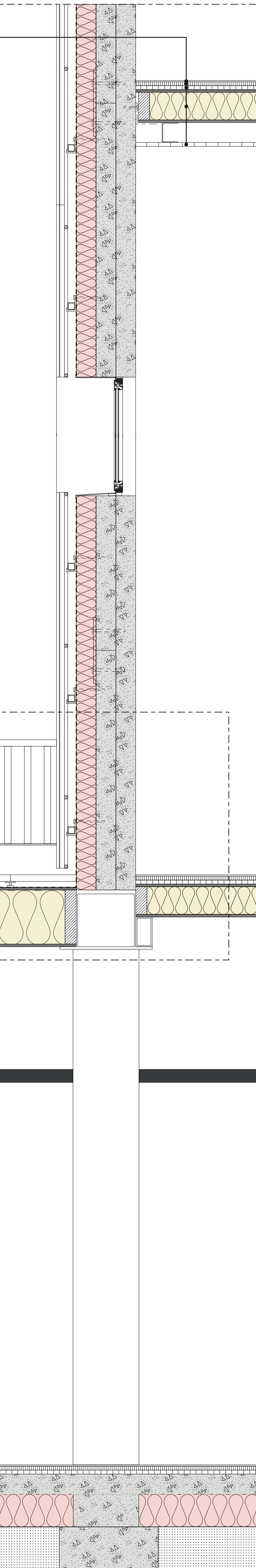


- Corrugated panels (different sizes)
- Mounting frame
- Waterproof layer
- Rigid cellulose foam board insulation, 150 mm
- Harvested concrete panels connected with pins and plates, 2x 150 mm



1:20 Horizontal Detail

- Reclaimed wooden flooring, 10 mm
- Gypsum fiber composite floor element, 30 mm
- Cardboard honeycomb structure filled with concrete levelling compound, 30 mm
- Wooden sandwich panel insulated with shredded paper insulation, 250 mm
- Lowered ceiling for installations, 180 mm



1:20 Vertical Detail