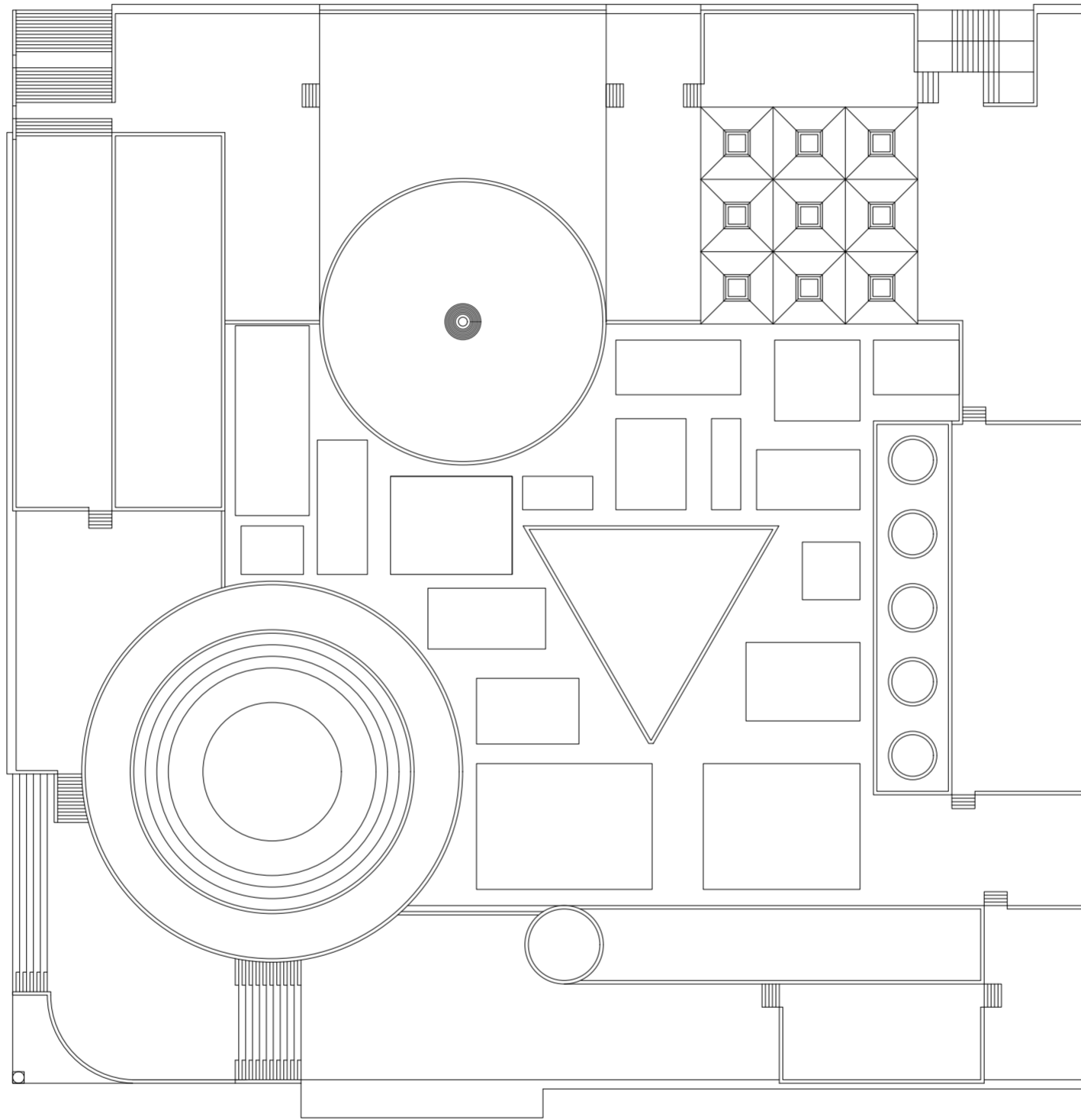
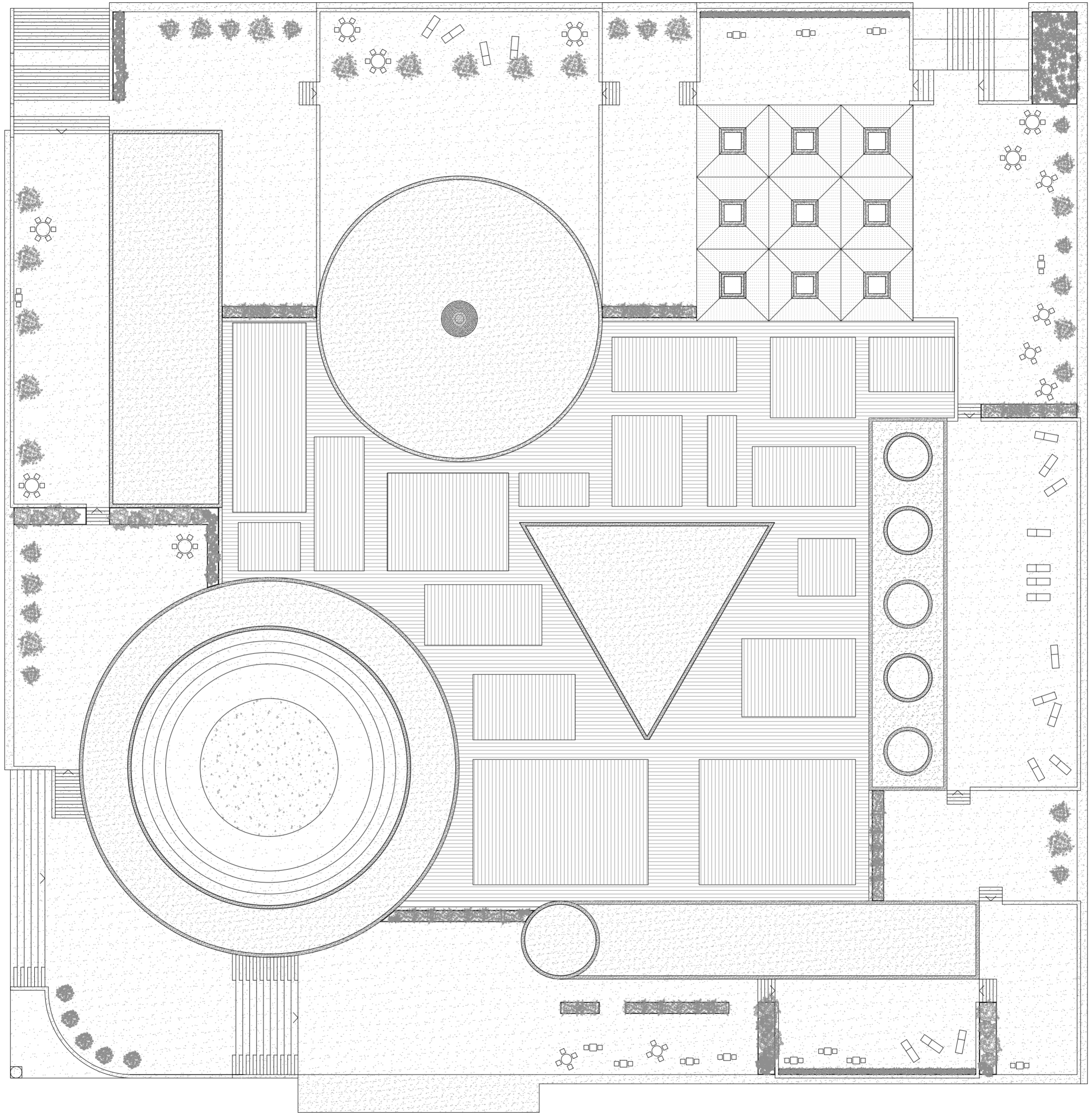
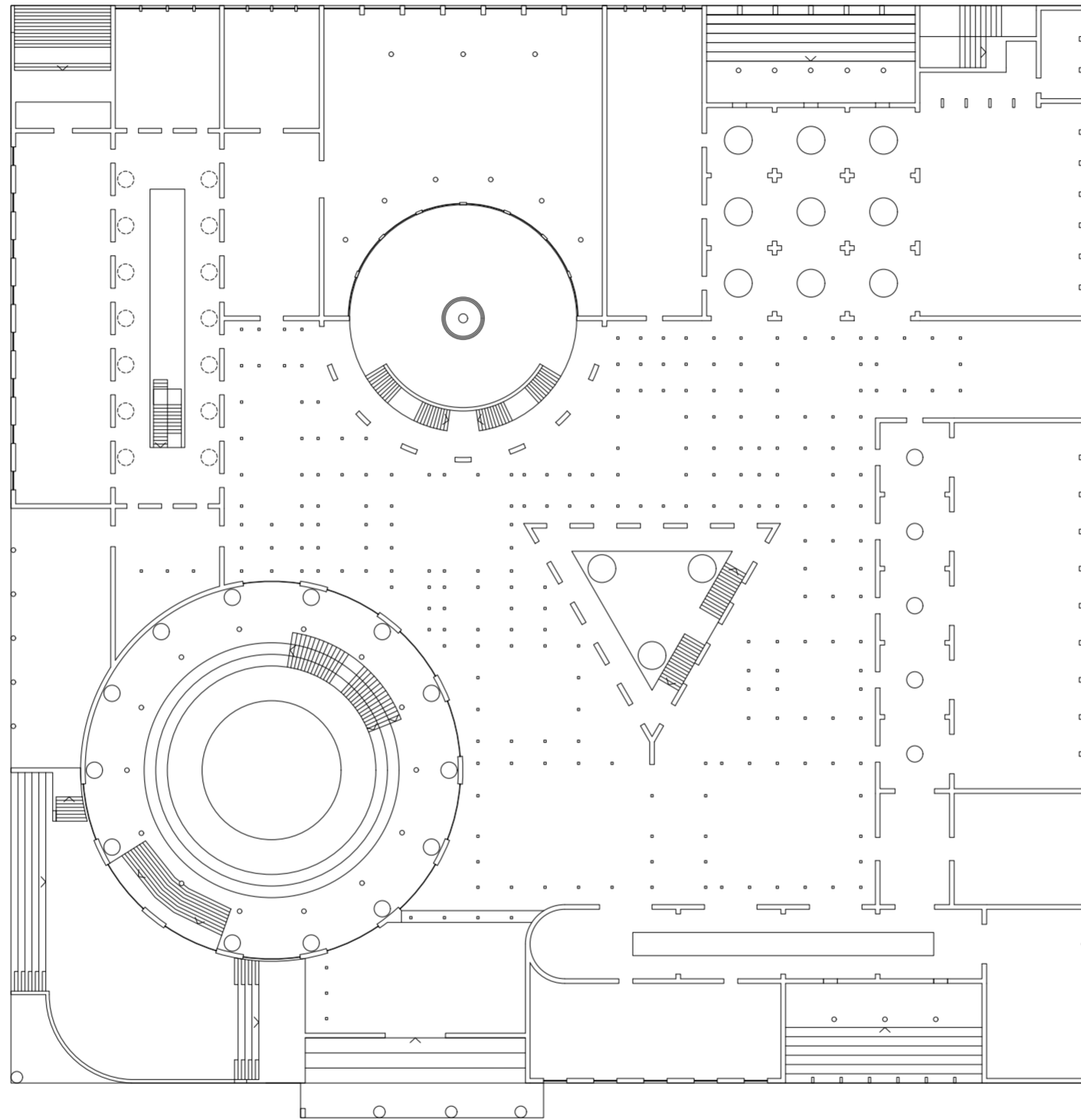


underground floor plan



roof plan



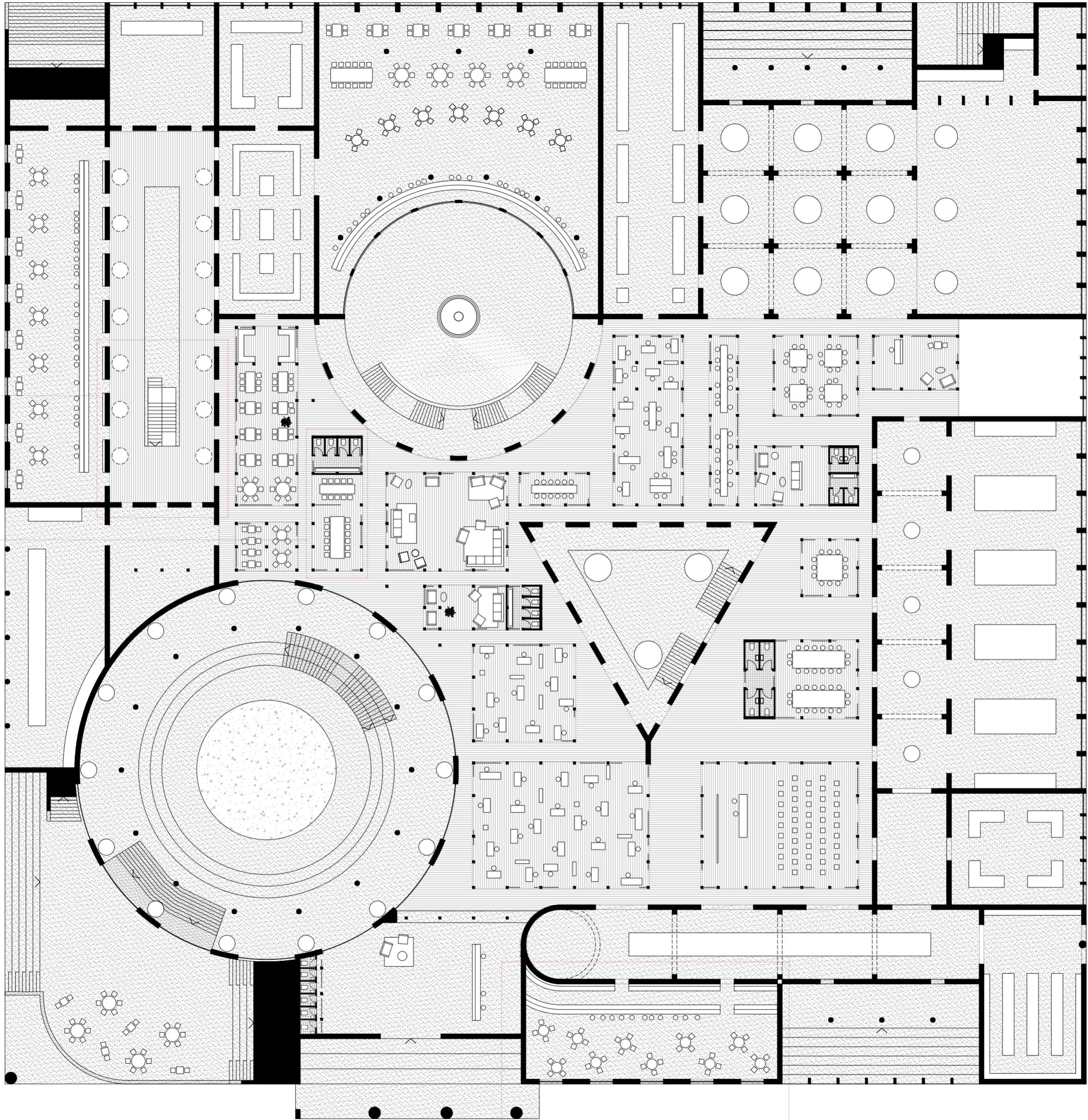


ground floor plan

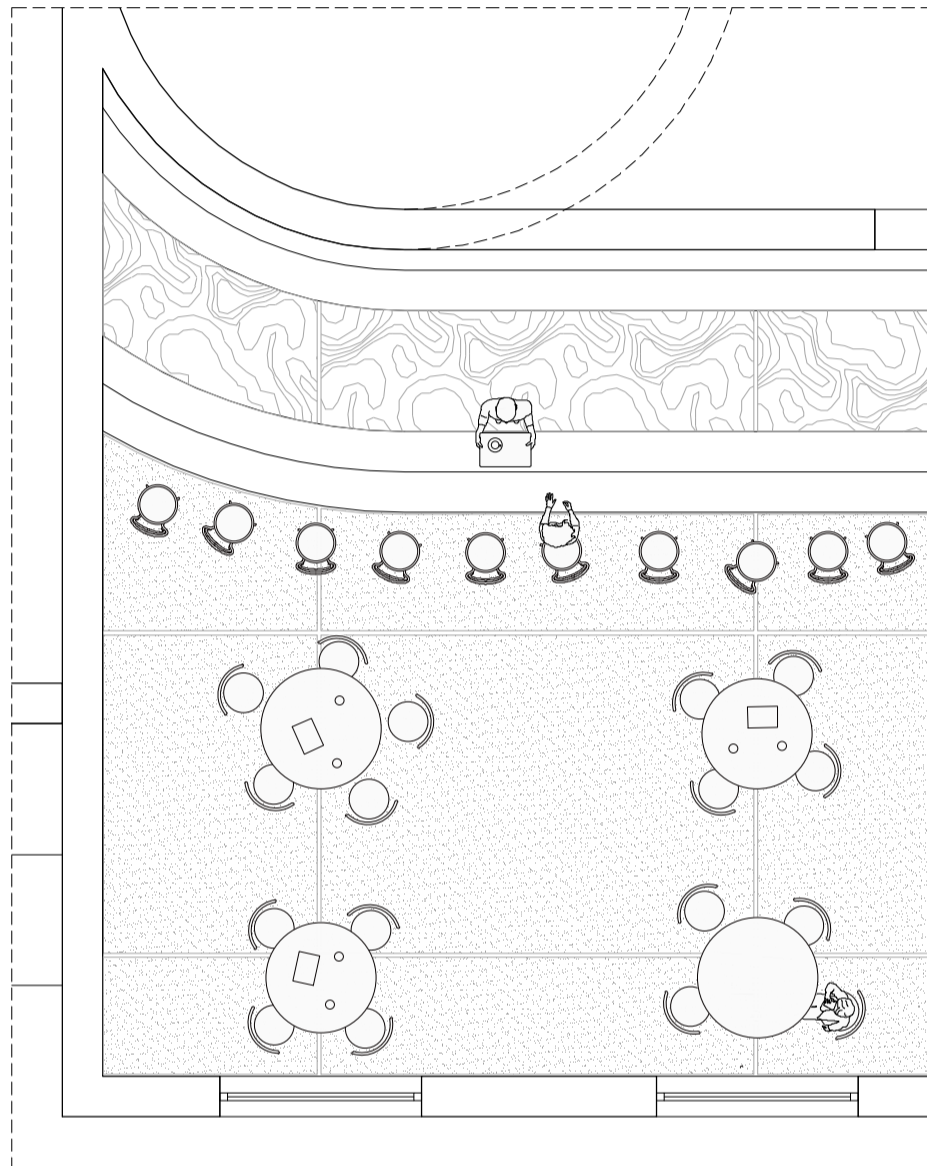


plan detail / chamber / II

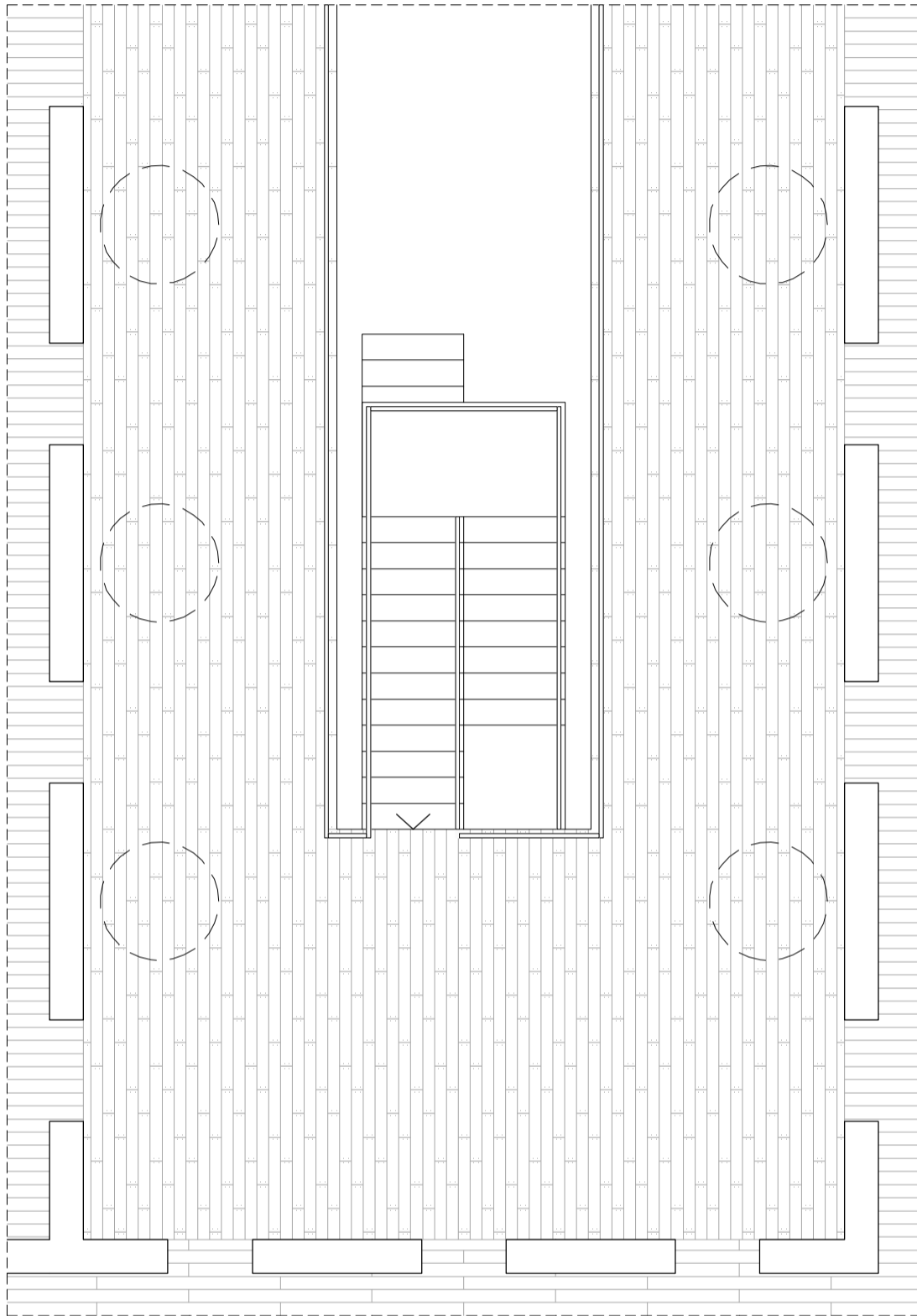
plan detail / office / III



plan detail / pub / I

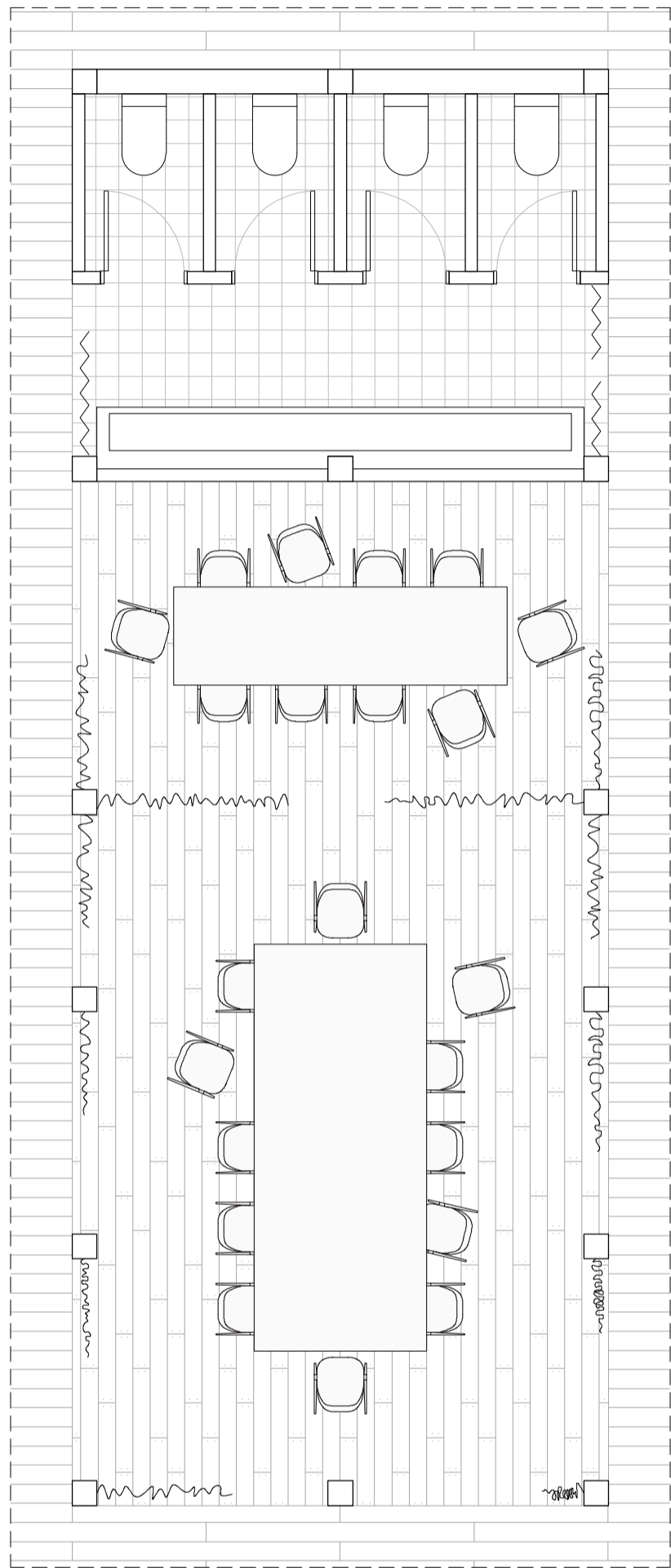


pub detail



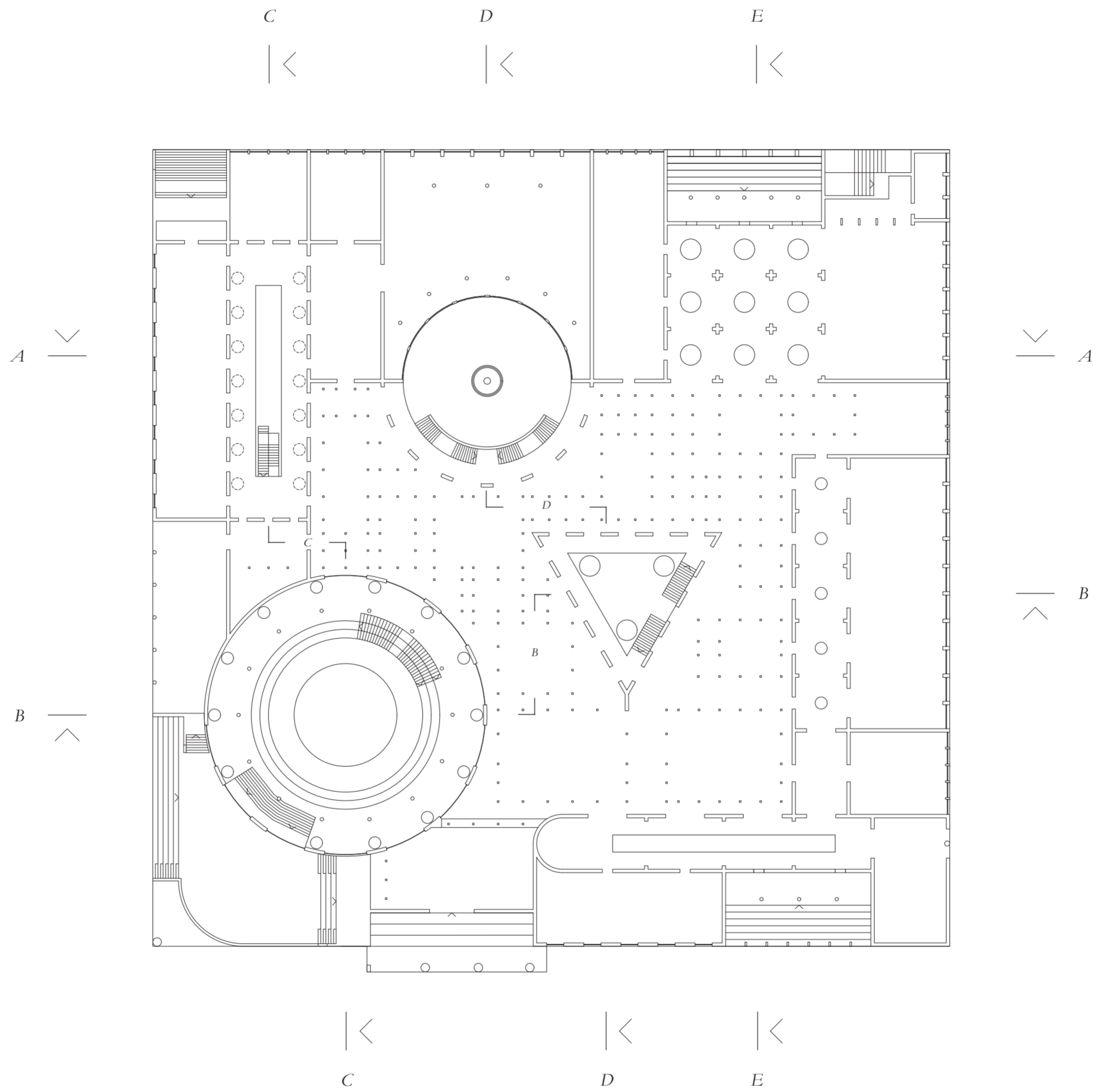
chamber detail

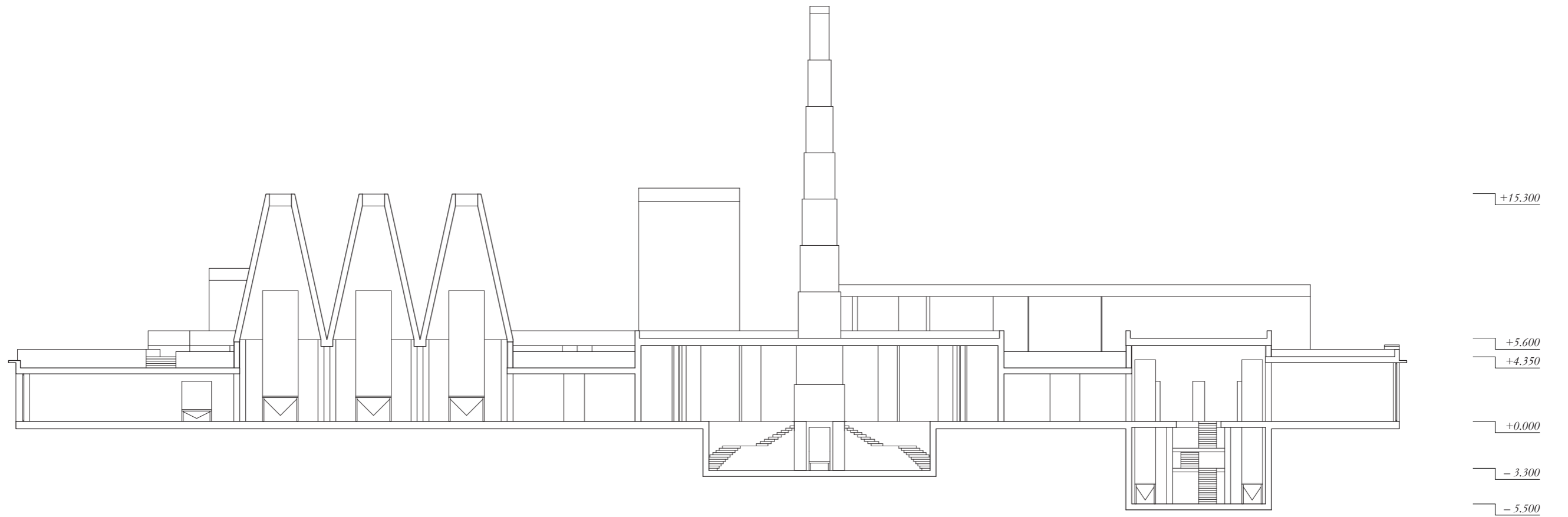
0 1 2 5 10
| | | | | | | | | |



office detail

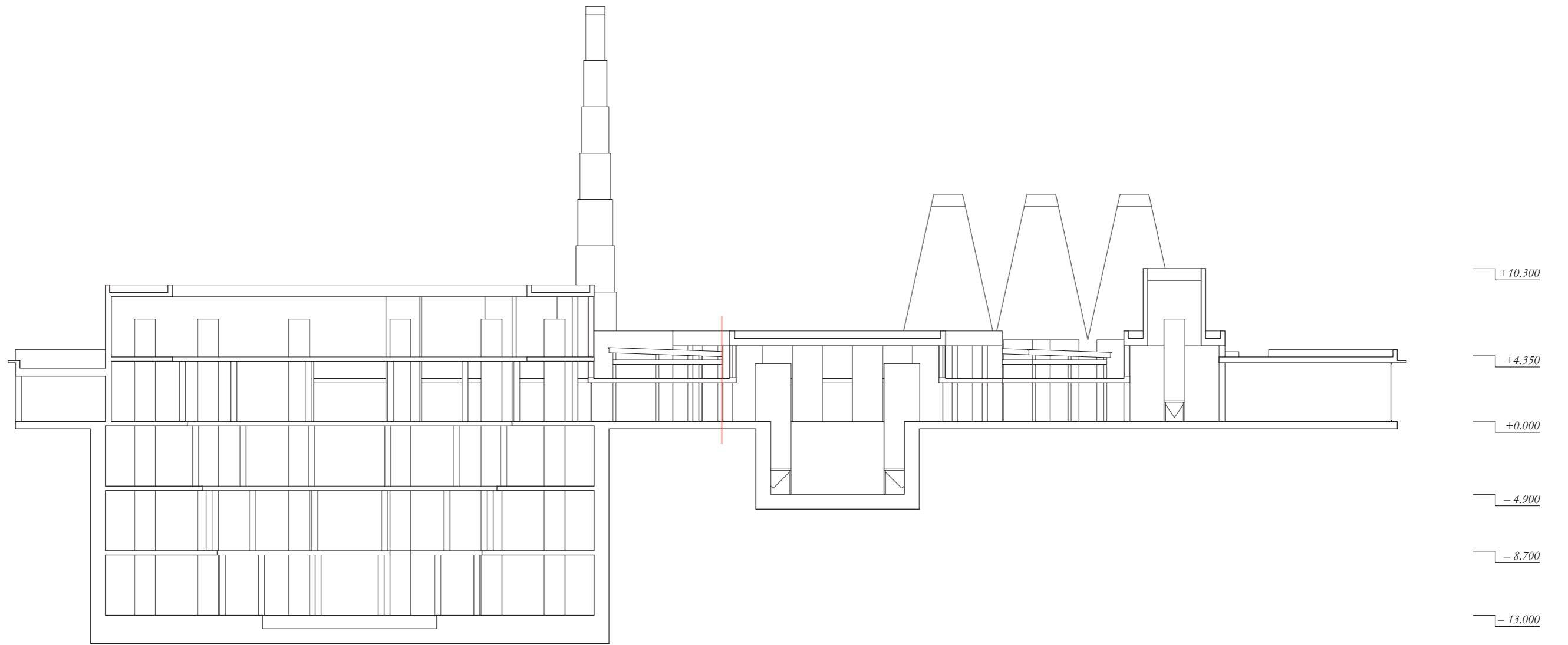






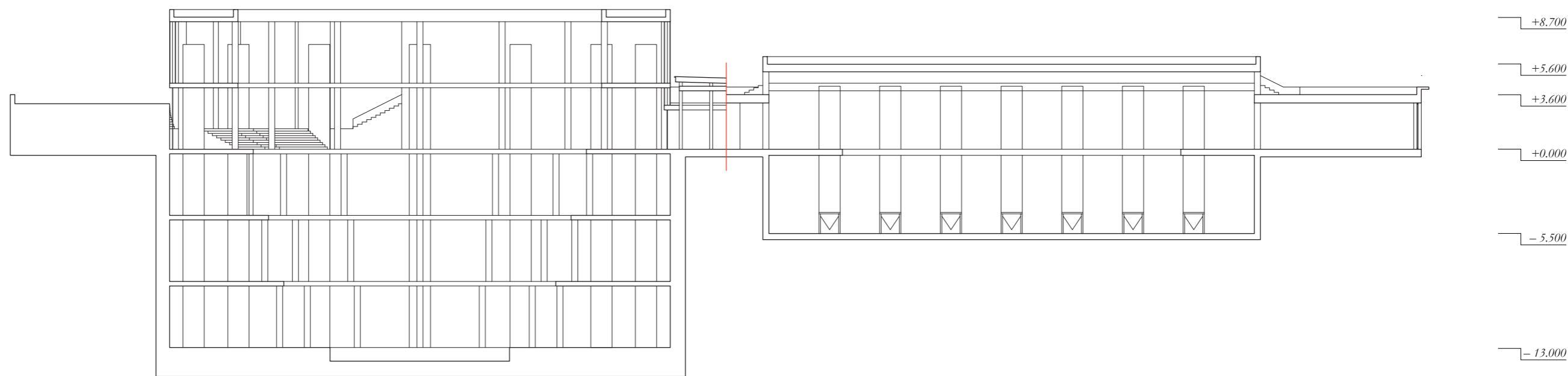
A-A





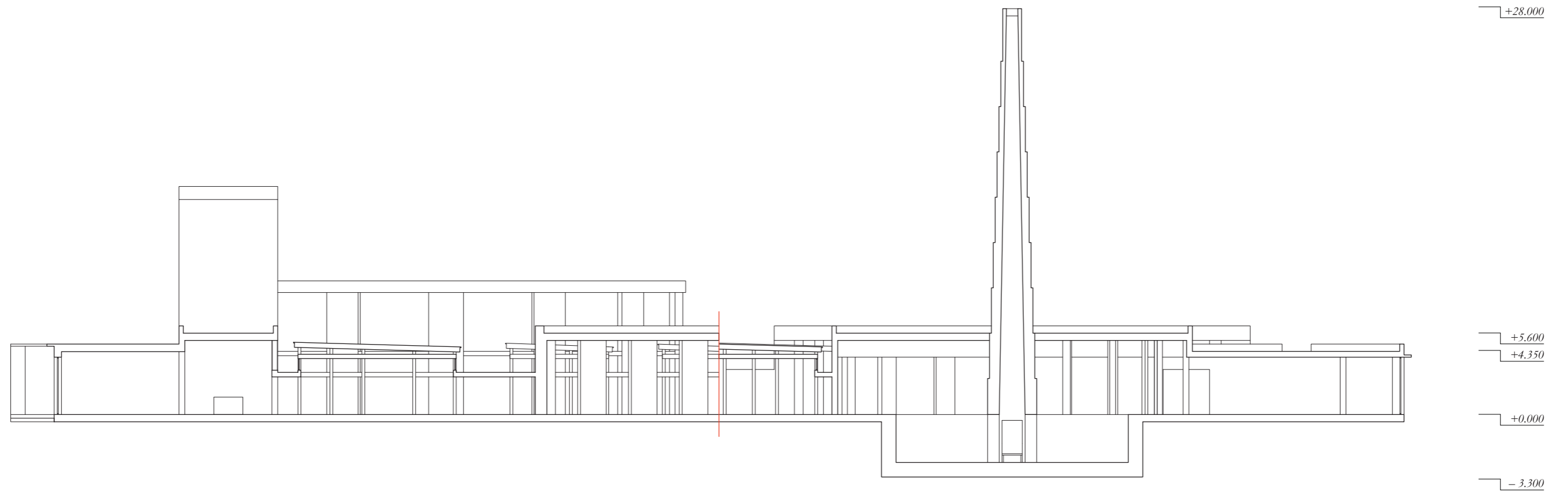
B-B





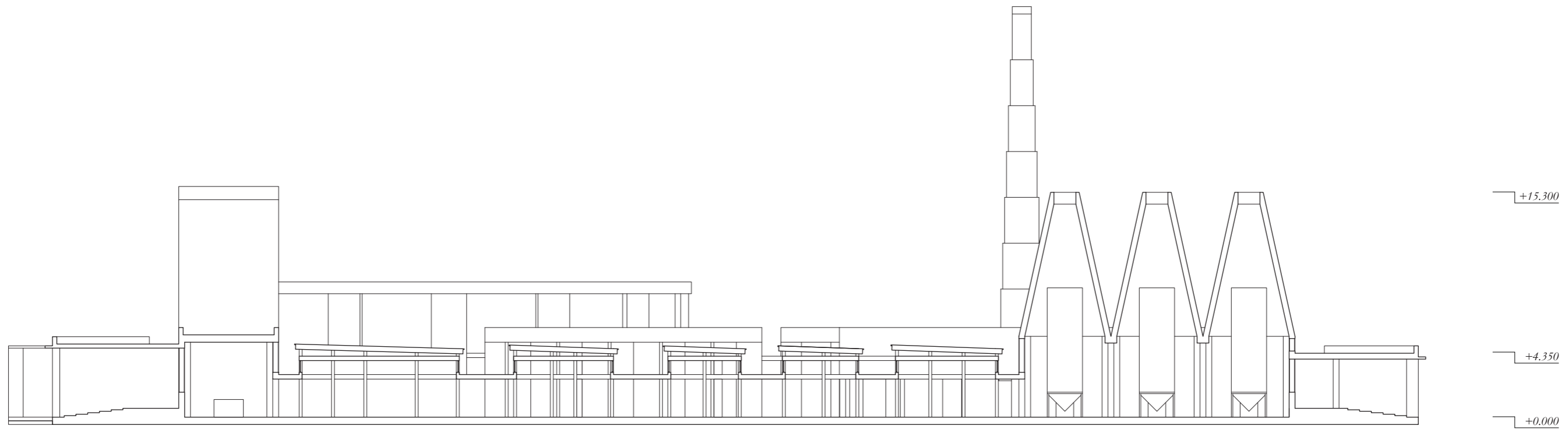
C-C





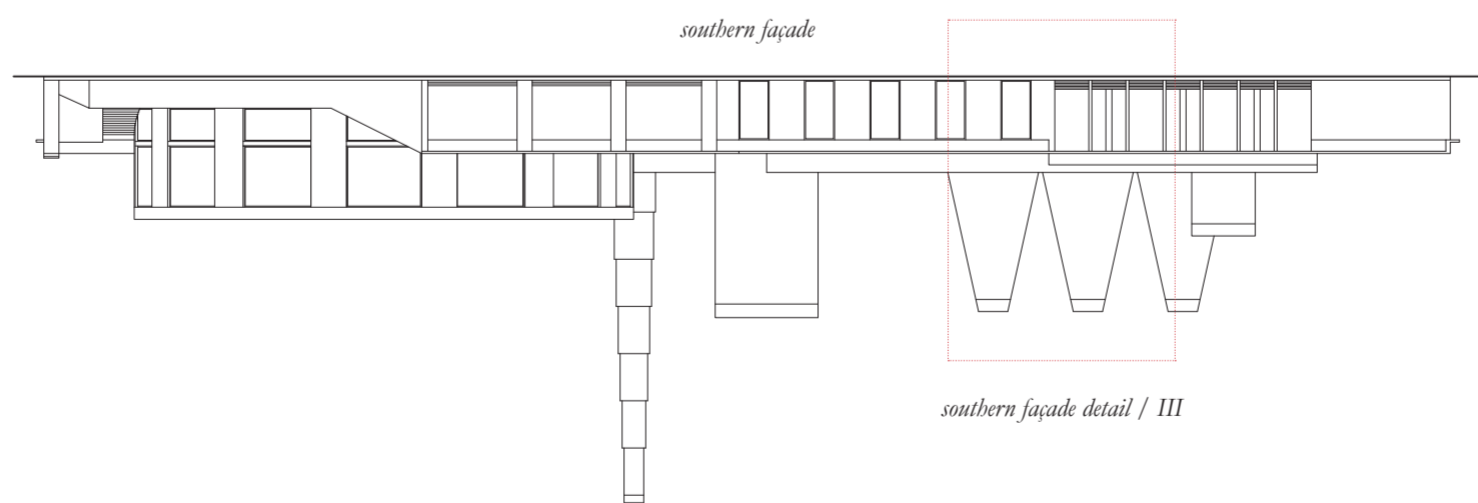
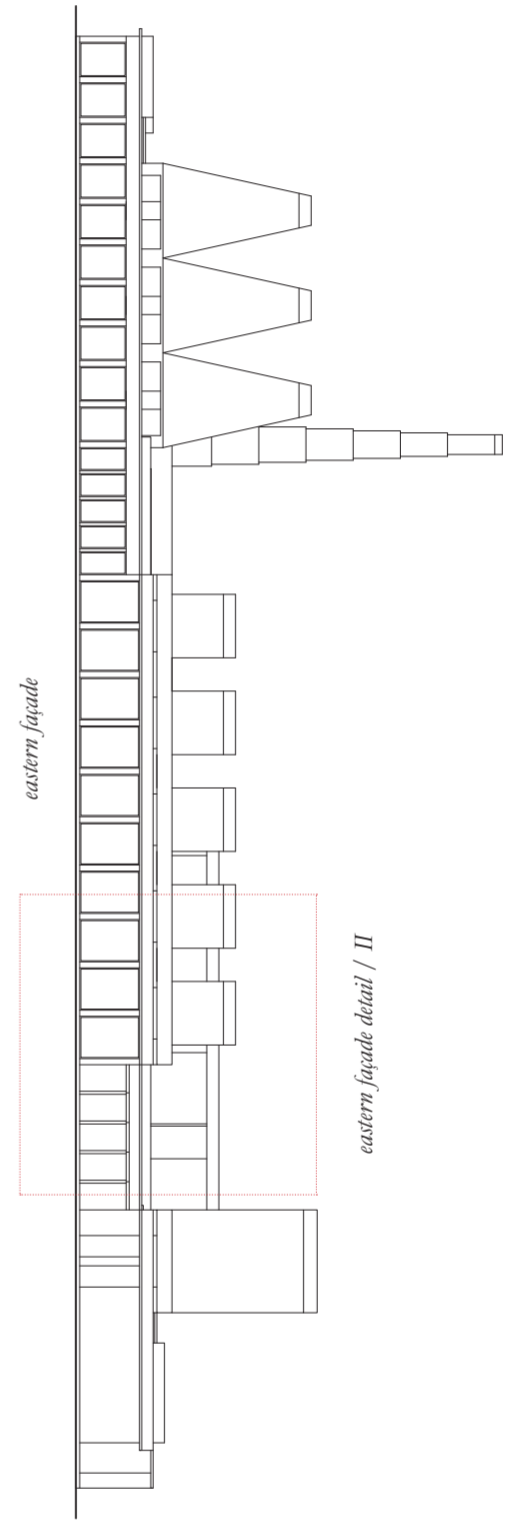
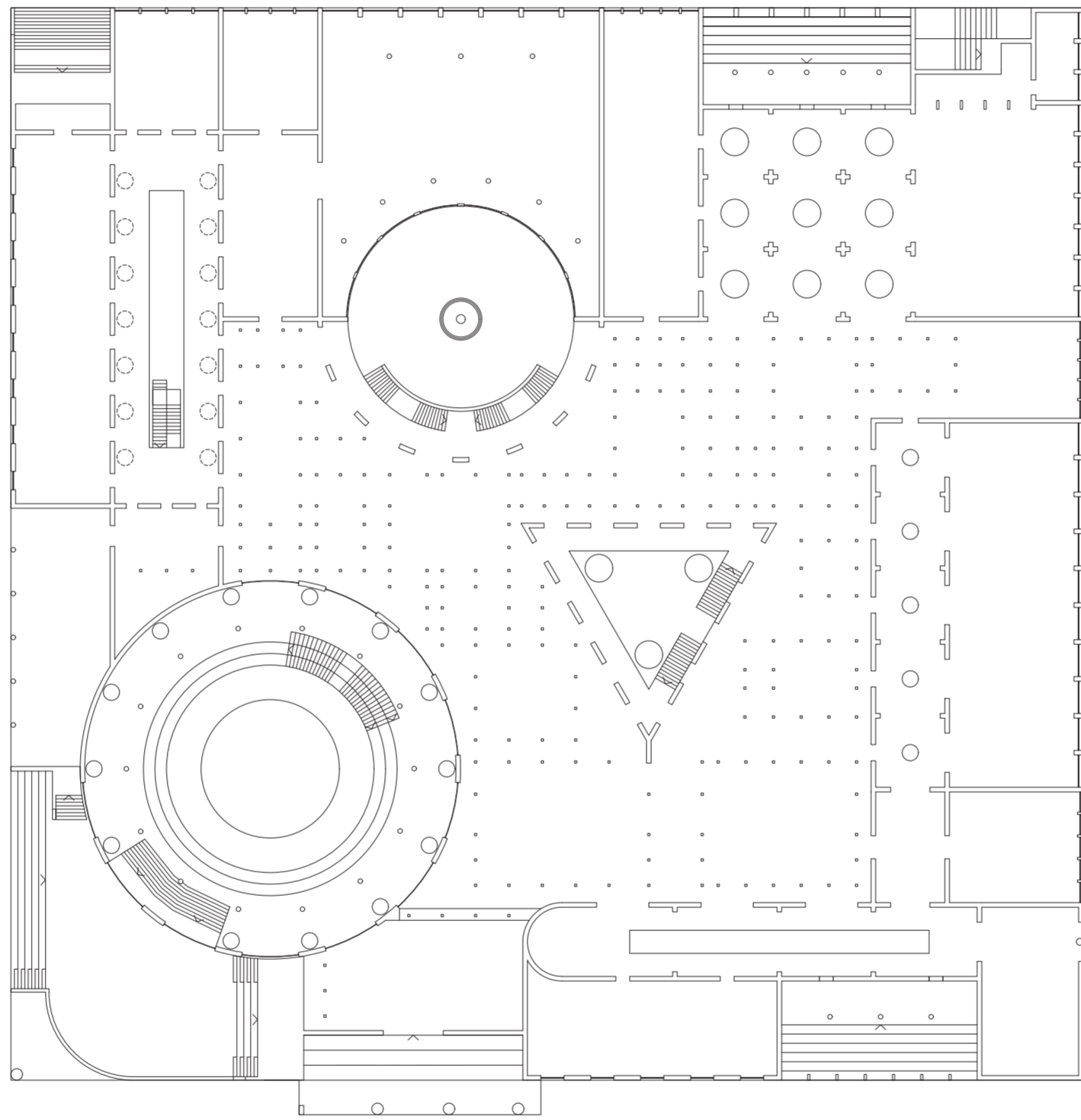
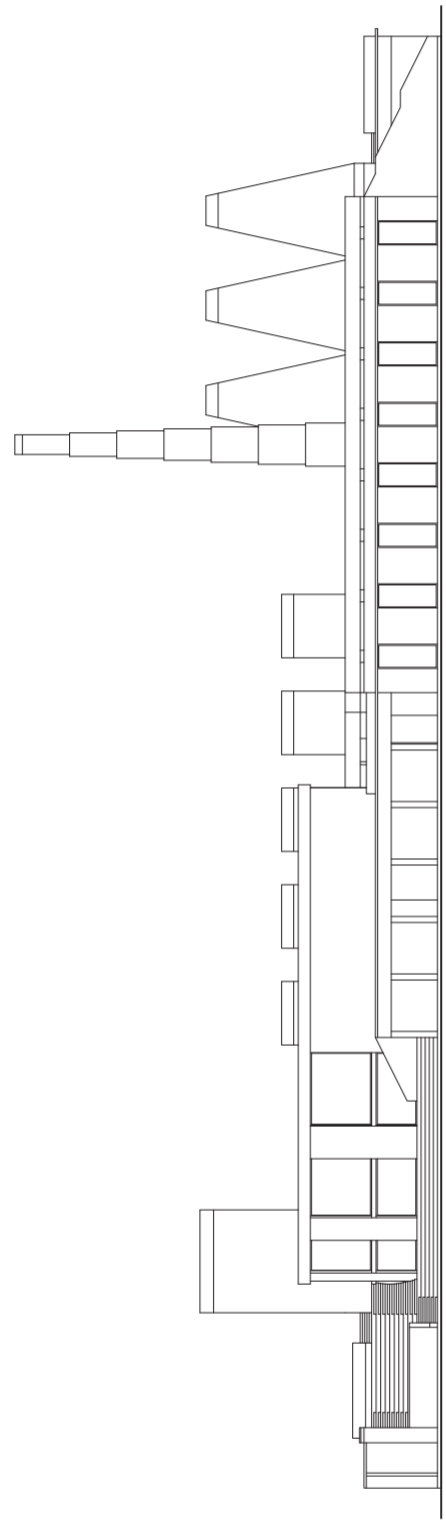
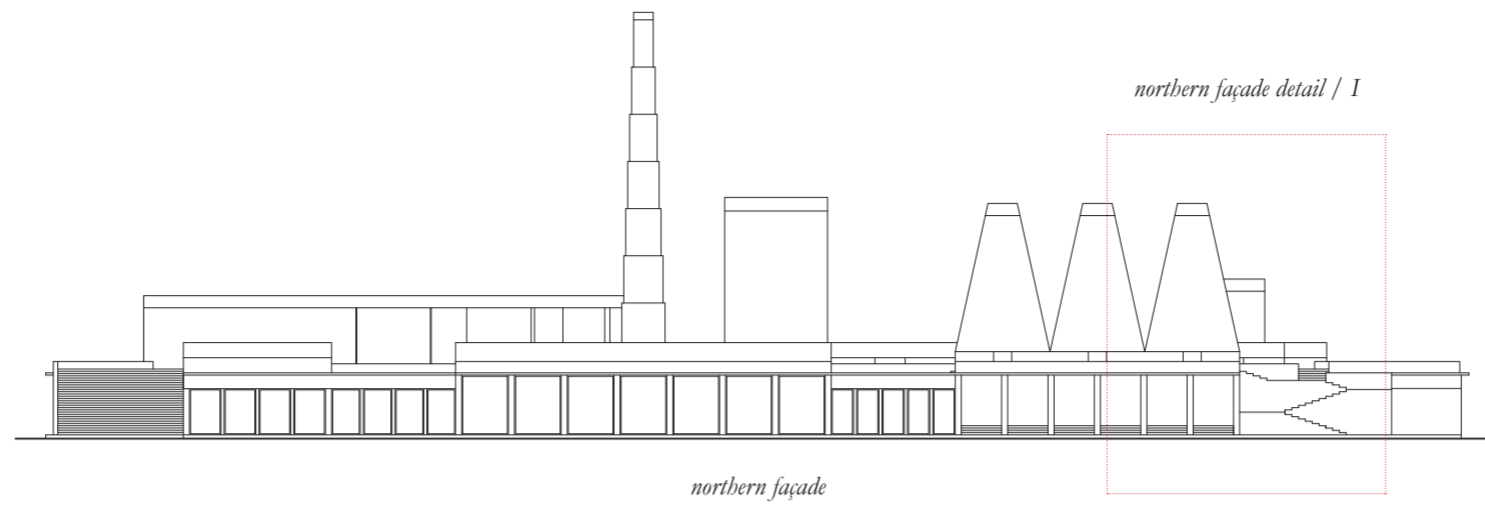
D-D

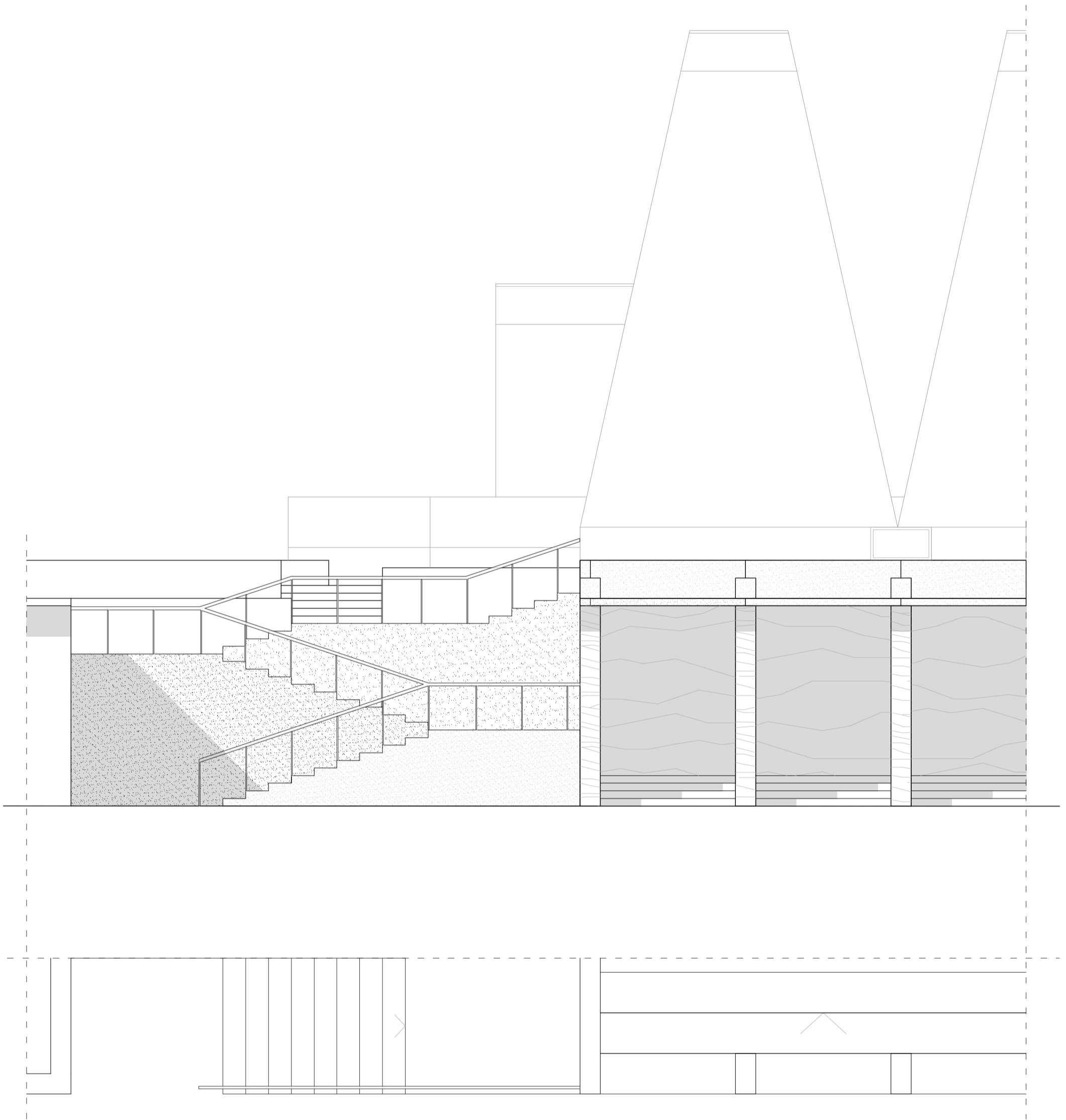




E-E

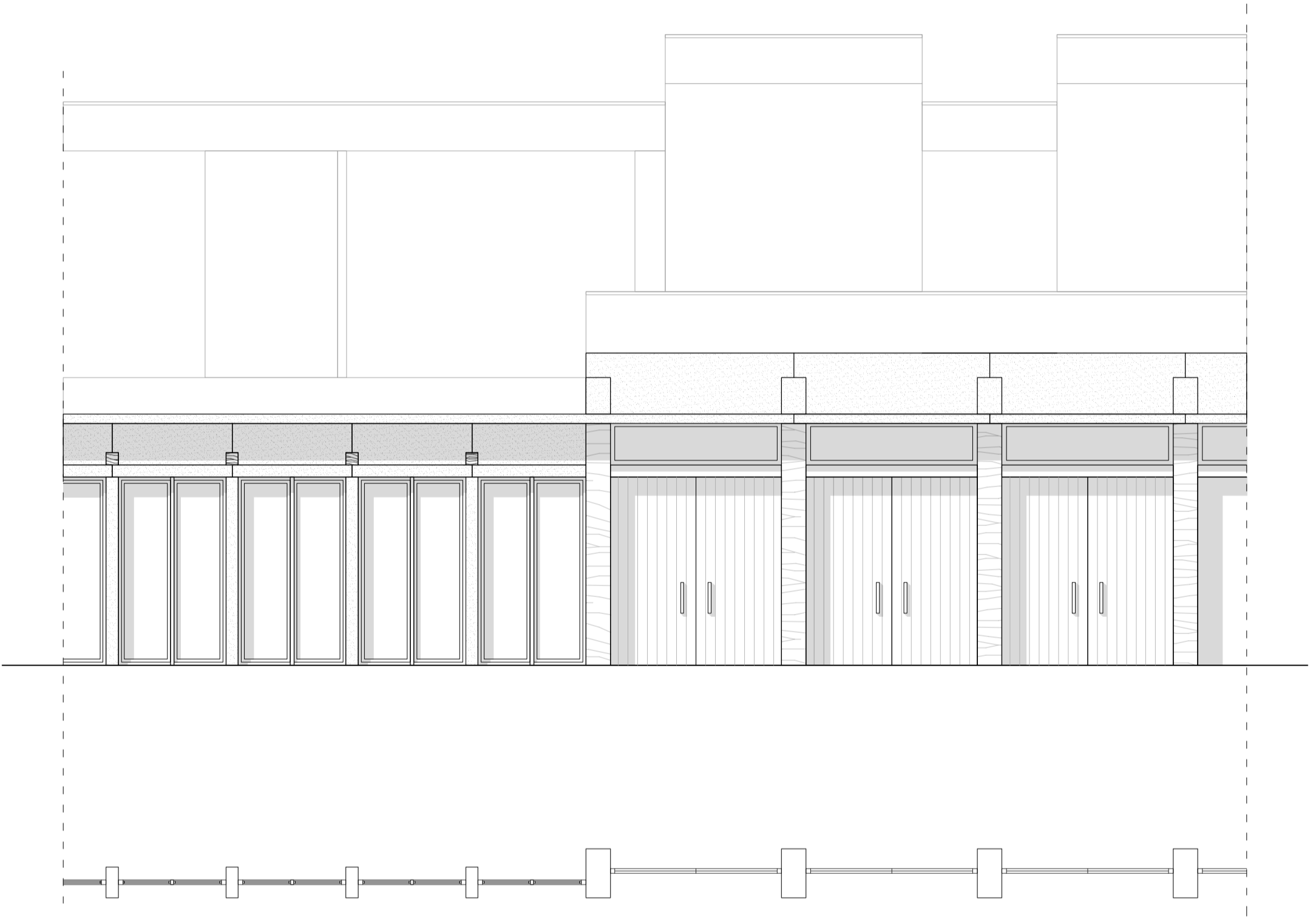






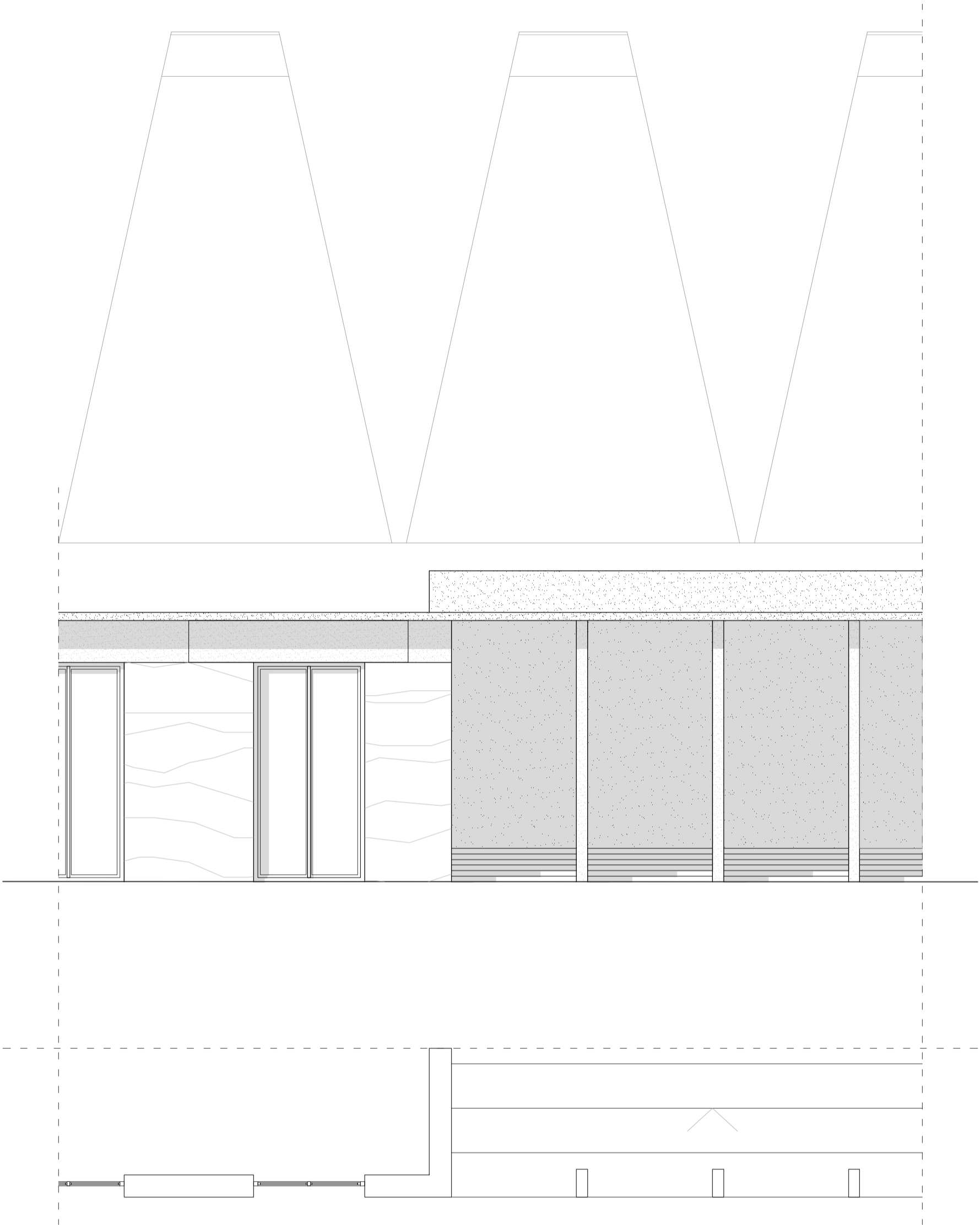
northern façade detail

0 1 2 5 10
| | | | | | | | | |



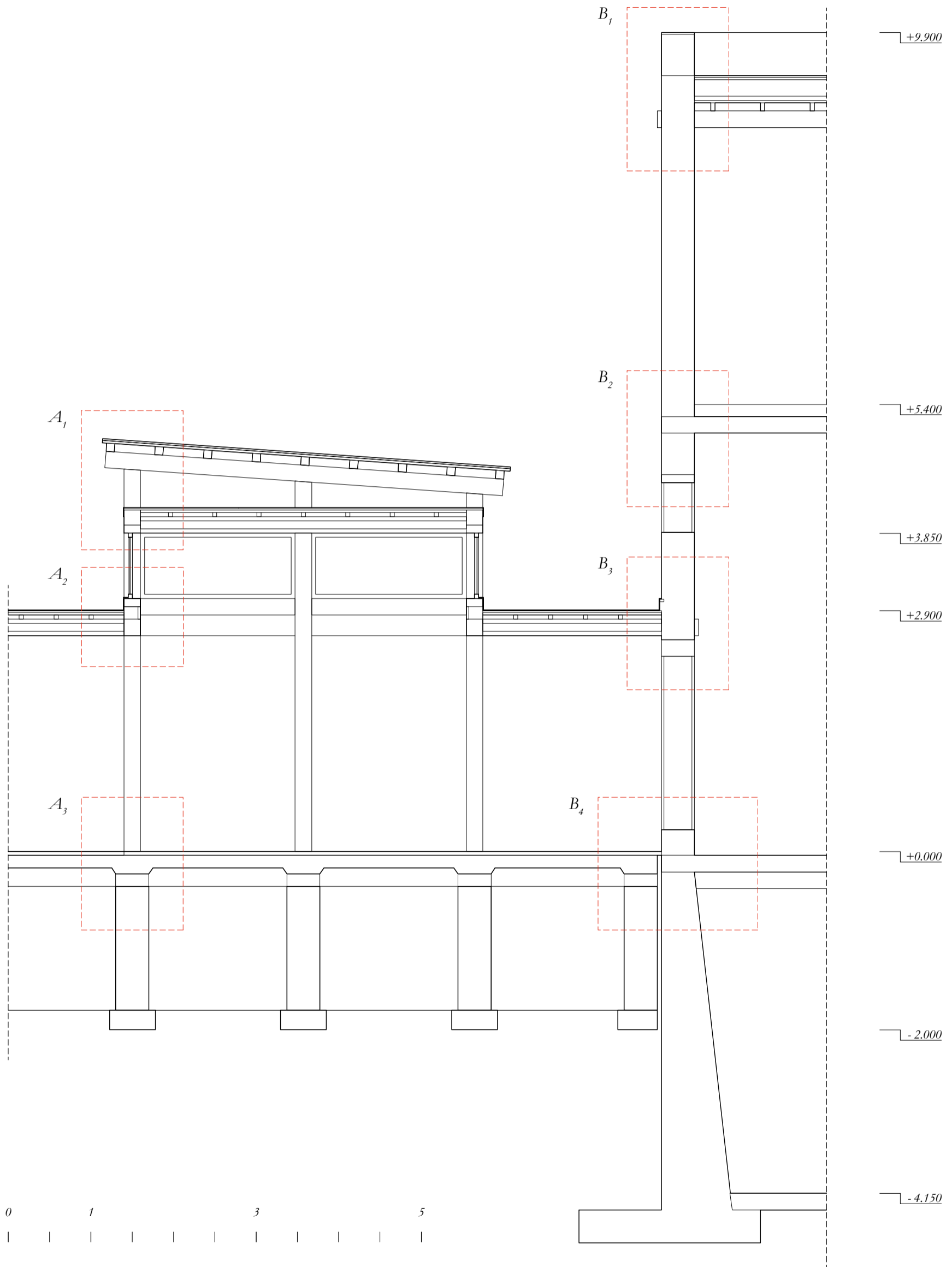
eastern façade detail

0 1 2 5 10
| | | | | | | | | |

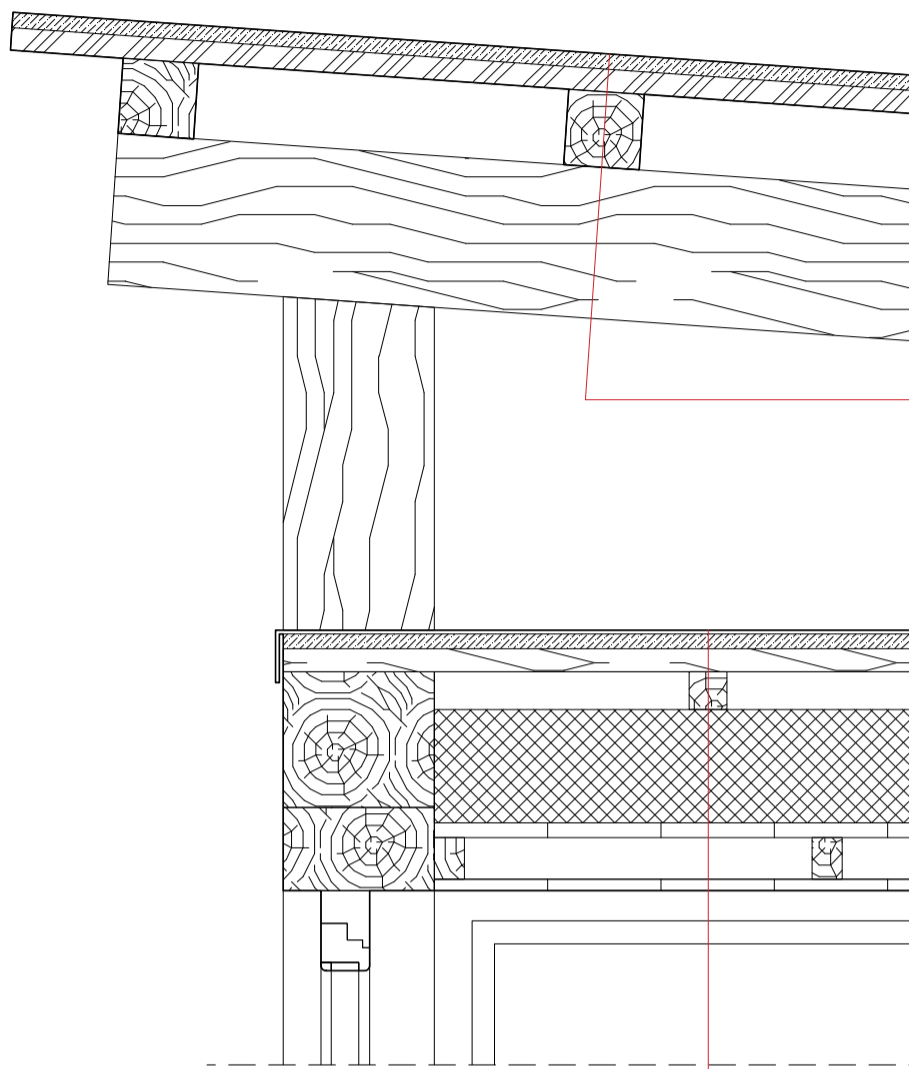


southern façade detail

0 1 2 5 10
 | | | | | | | | | |

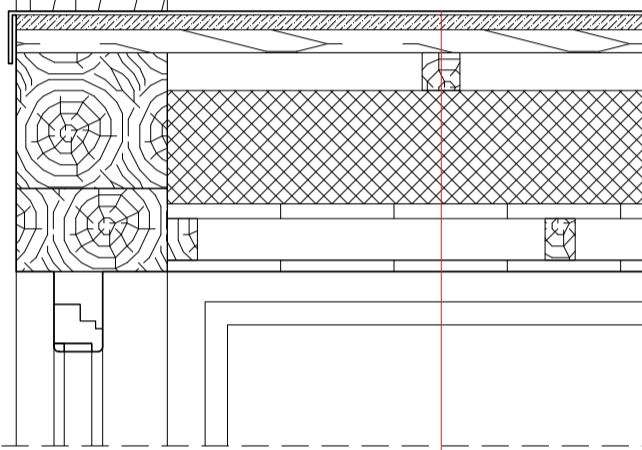


A₁



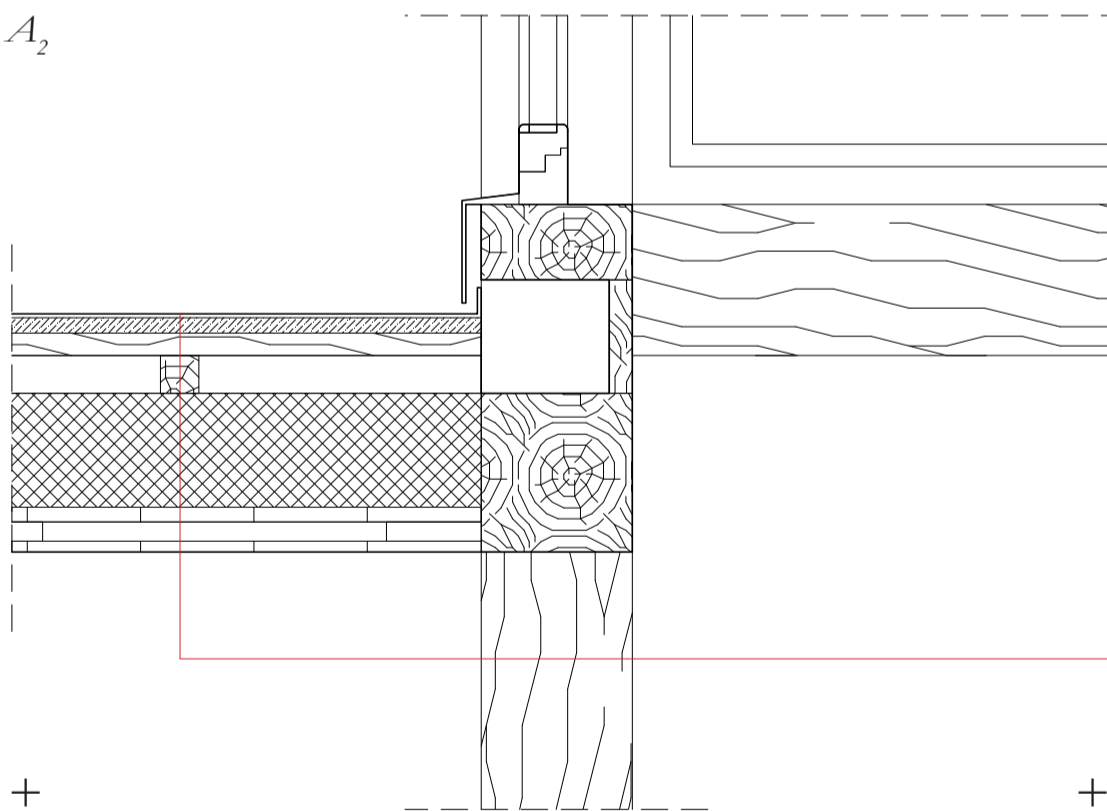
Metal sheet 5 mm
OSB sheet 20 mm
Rafters 50 mm
Beam 200 mm

—

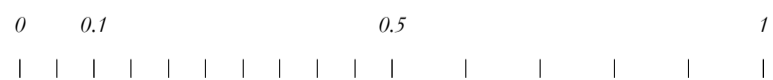


Metal sheet 5 mm
OSB sheet 20 mm
Counter lathing 30 mm
Lathing 50 mm
Waterproofing 2 mm
Insulation 150 mm
Vapor barrier 2 mm
OSB sheet 25 mm
Lathing 55 mm
Lacquered plywood 15 mm

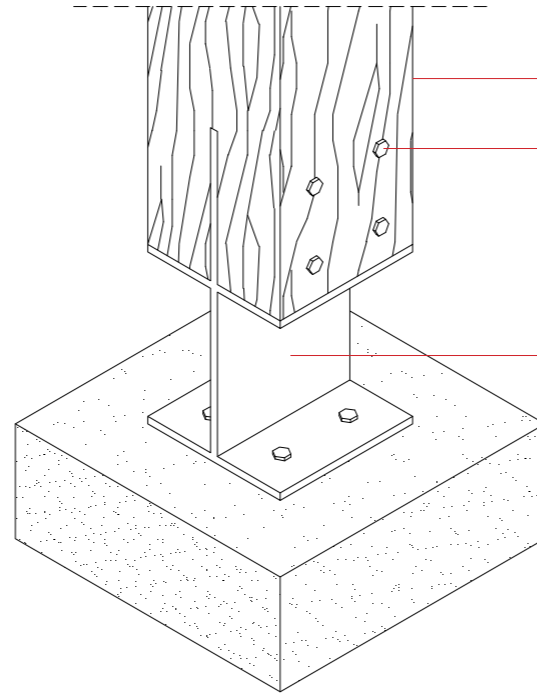
A₂



Metal sheet 5 mm
OSB sheet 20 mm
Counter lathing 30 mm
Lathing 50 mm
Waterproofing 2 mm
Insulation 150 mm
Vapor barrier 2 mm
OSB sheet 25 mm
Lathing 25 mm
Lacquered plywood 15 mm



A₃

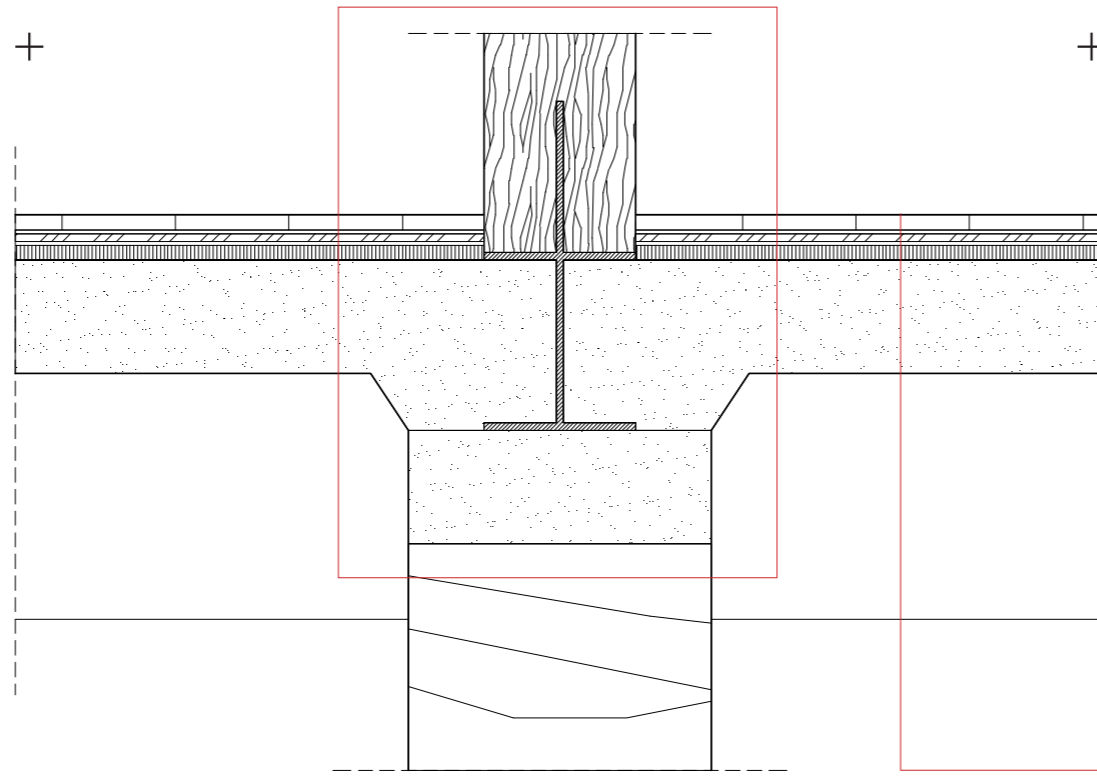


Wooden stand 200x200 mm

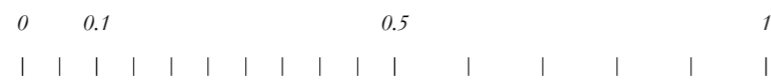
Metal bolts Ø 10 mm

Metal joint element

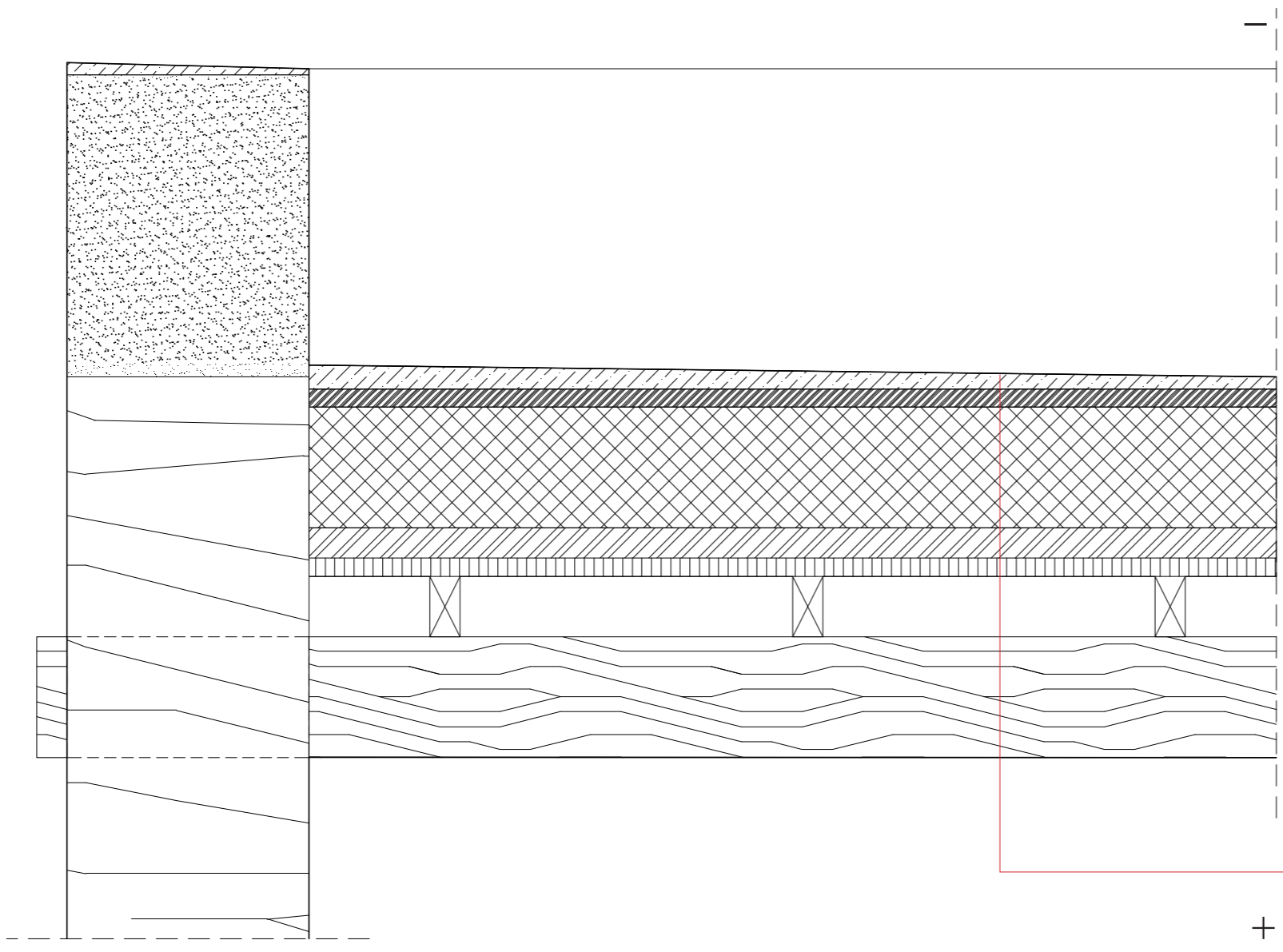
Concrete support



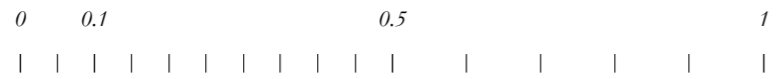
Engineering board 20 mm
Glue 2 mm
Water-resistant plywood 10mm
Glue 2 mm
Primer on the screed 10 mm
Screed 20 mm
Waterproofing 2 mm
Concrete floor covering 150 mm



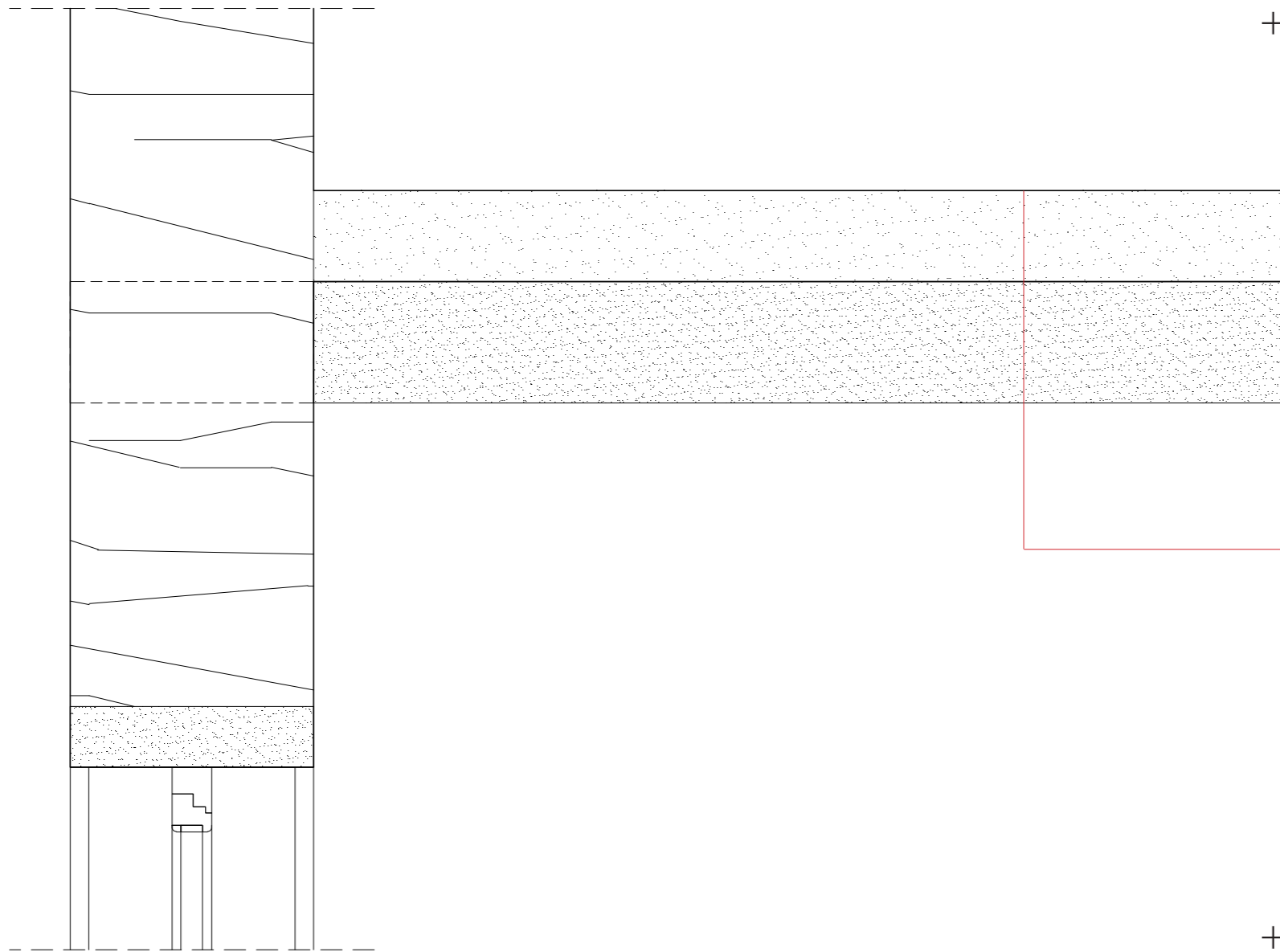
B_1



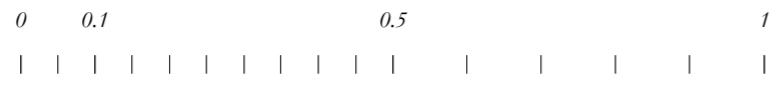
- Metal sheet 20 mm
- Waterproofing 2 mm
- OSB sheet 30 mm
- Insulation 200 mm
- Vapor barrier 2 mm
- Plywood 50 mm
- Lacquered plywood 30 mm
- Lathing 100 mm
- Beam 200 mm



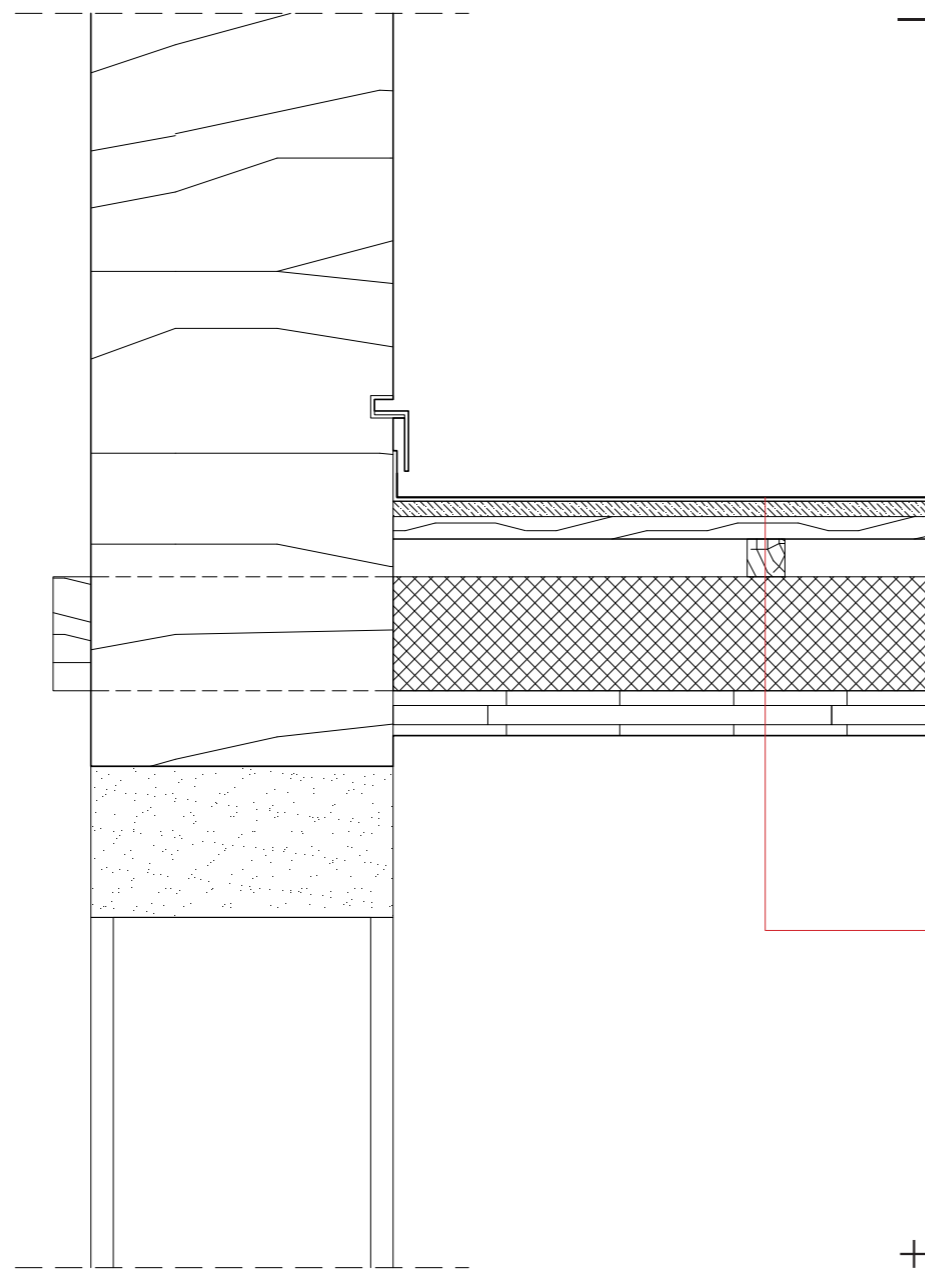
B_2



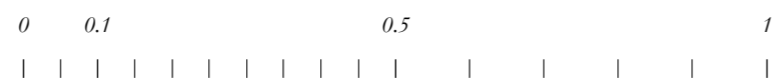
Concrete floor 150 mm
Concrete beams 200 mm



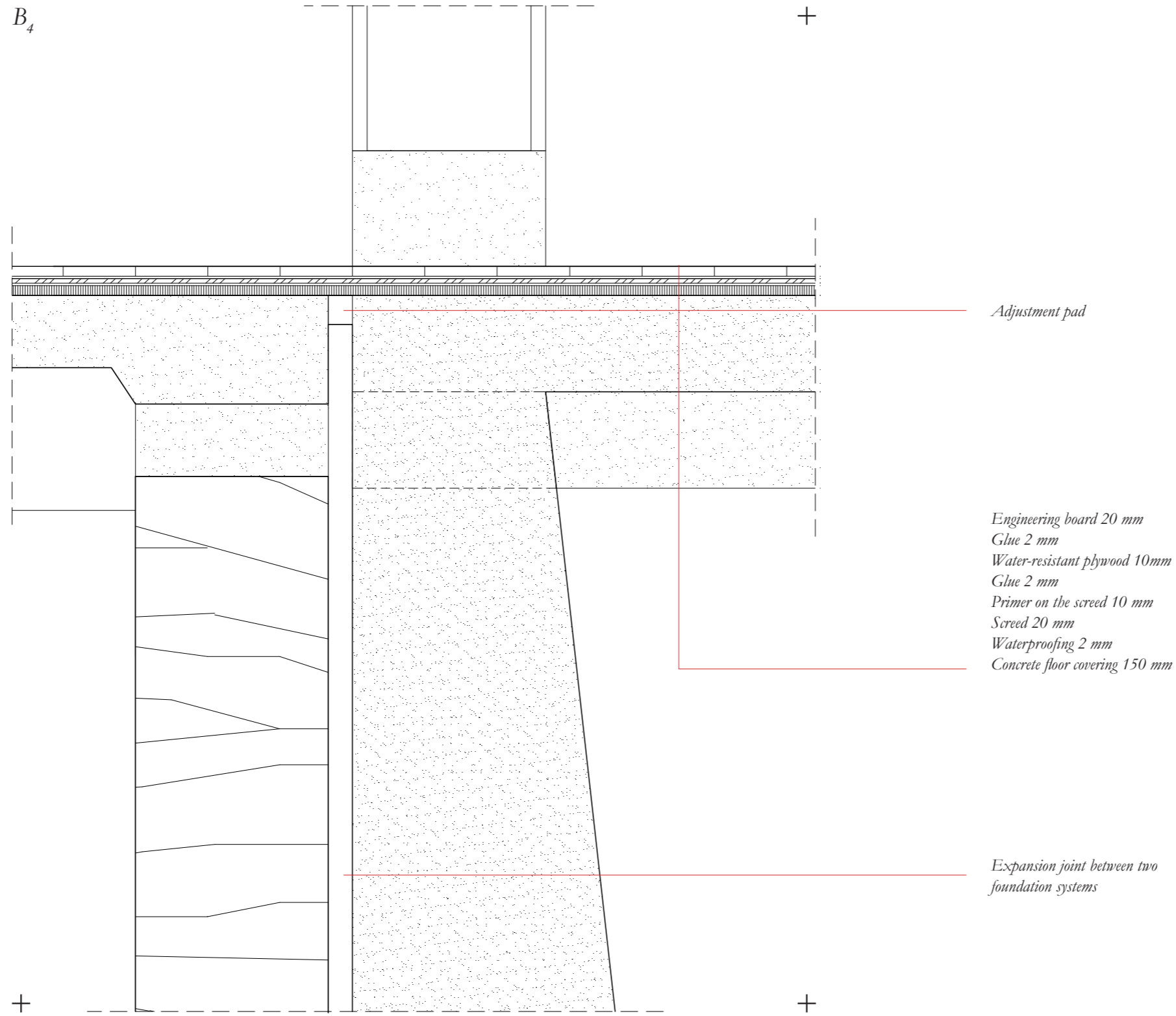
B_3



- Metal sheet 5 mm*
- OSB sheet 20 mm*
- Counter lathing 30 mm*
- Lathing 50 mm*
- Waterproofing 2 mm*
- Insulation 150 mm*
- Vapor barrier 2 mm*
- OSB sheet 25 mm*
- Lathing 25 mm*
- Lacquered plywood 15 mm*



B_4



Adjustment pad

*Engineering board 20 mm
Glue 2 mm
Water-resistant plywood 10mm
Glue 2 mm
Primer on the screed 10 mm
Screed 20 mm
Waterproofing 2 mm
Concrete floor covering 150 mm*

*Expansion joint between two
foundation systems*

