



C.H. de Heij
4165330

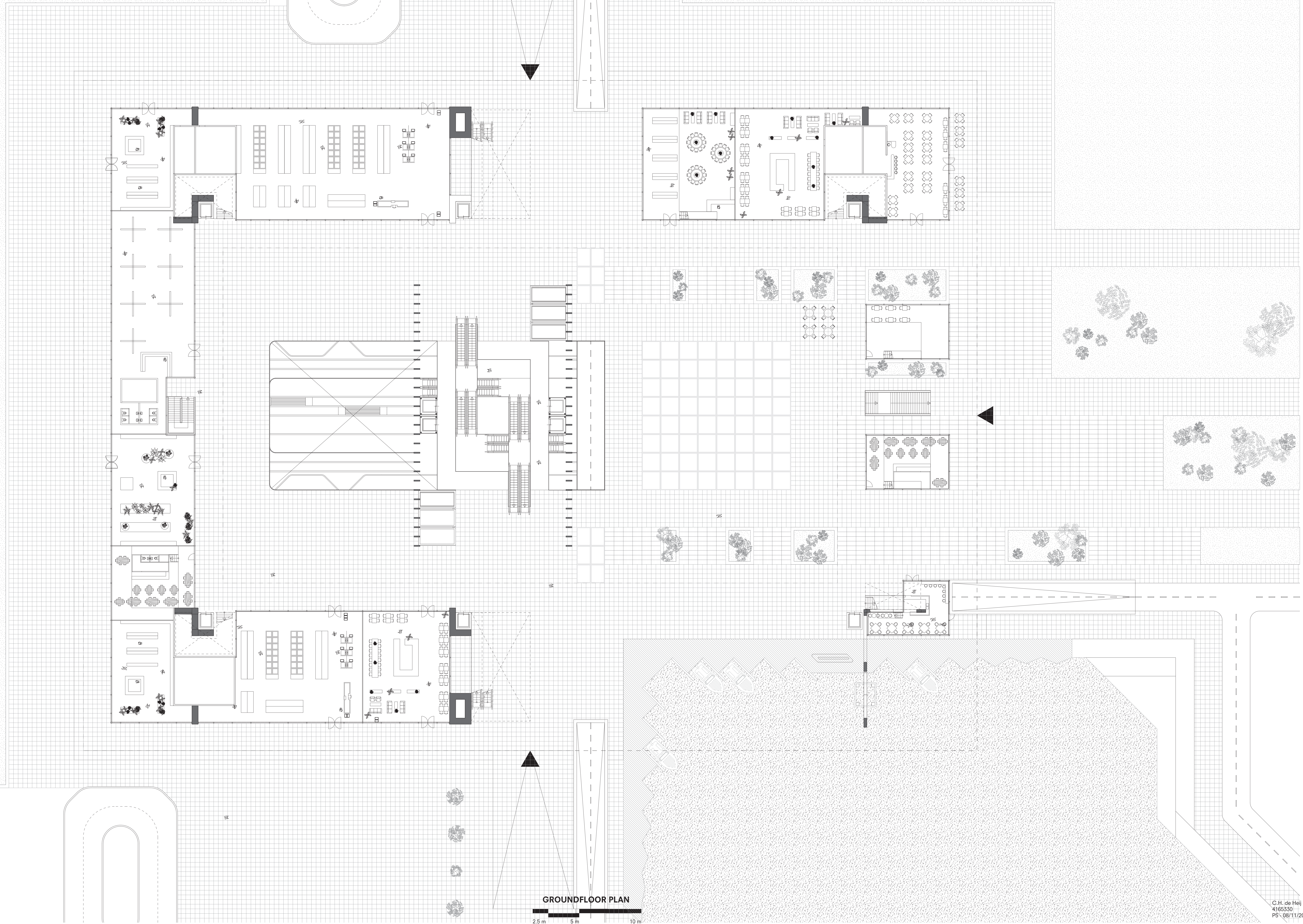
P5 - 08/11/2018
Complex Projects graduation studio
Amsterdam Mid-city

Tutors
O. Caso
G. Koskamp

THE BORDER NODE

a mobility project for Havenstad, Amsterdam

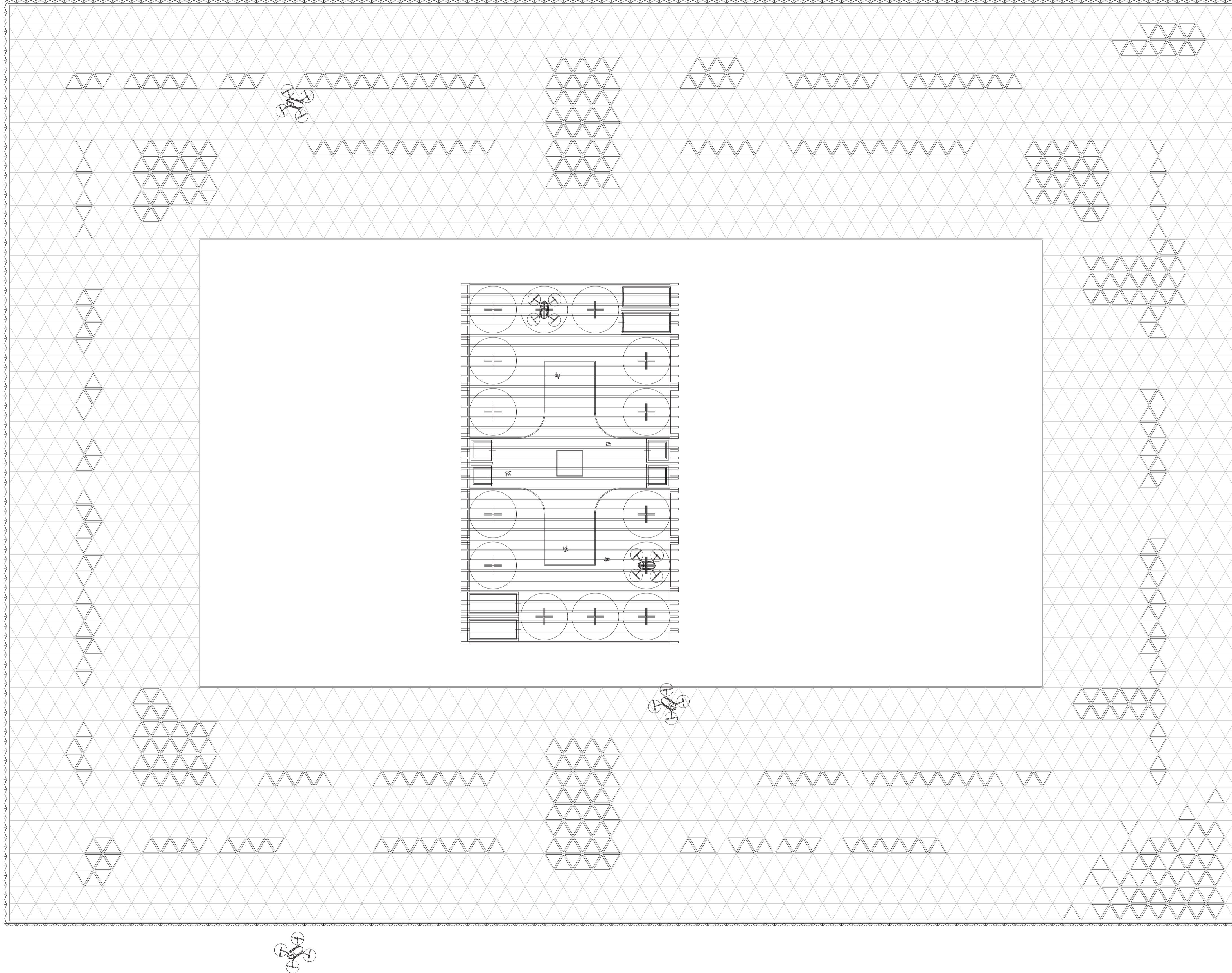
the border node
havenstad mobility



GROUND FLOOR PLAN

2.5 m 5 m 10 m

the border node
havenstad mobility



ROOF PLAN



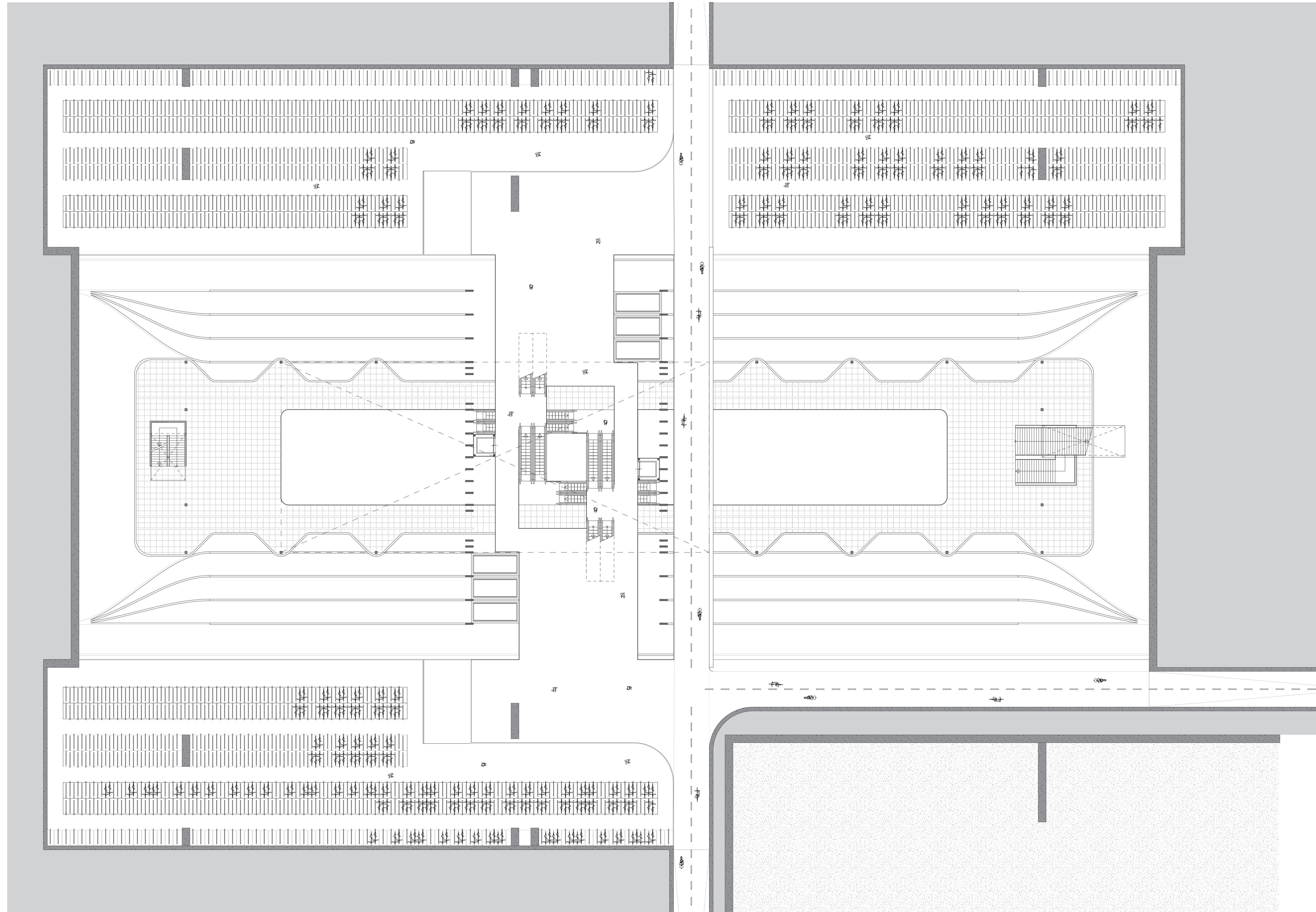
the border node
havenstad mobility



FIRST FLOOR PLAN



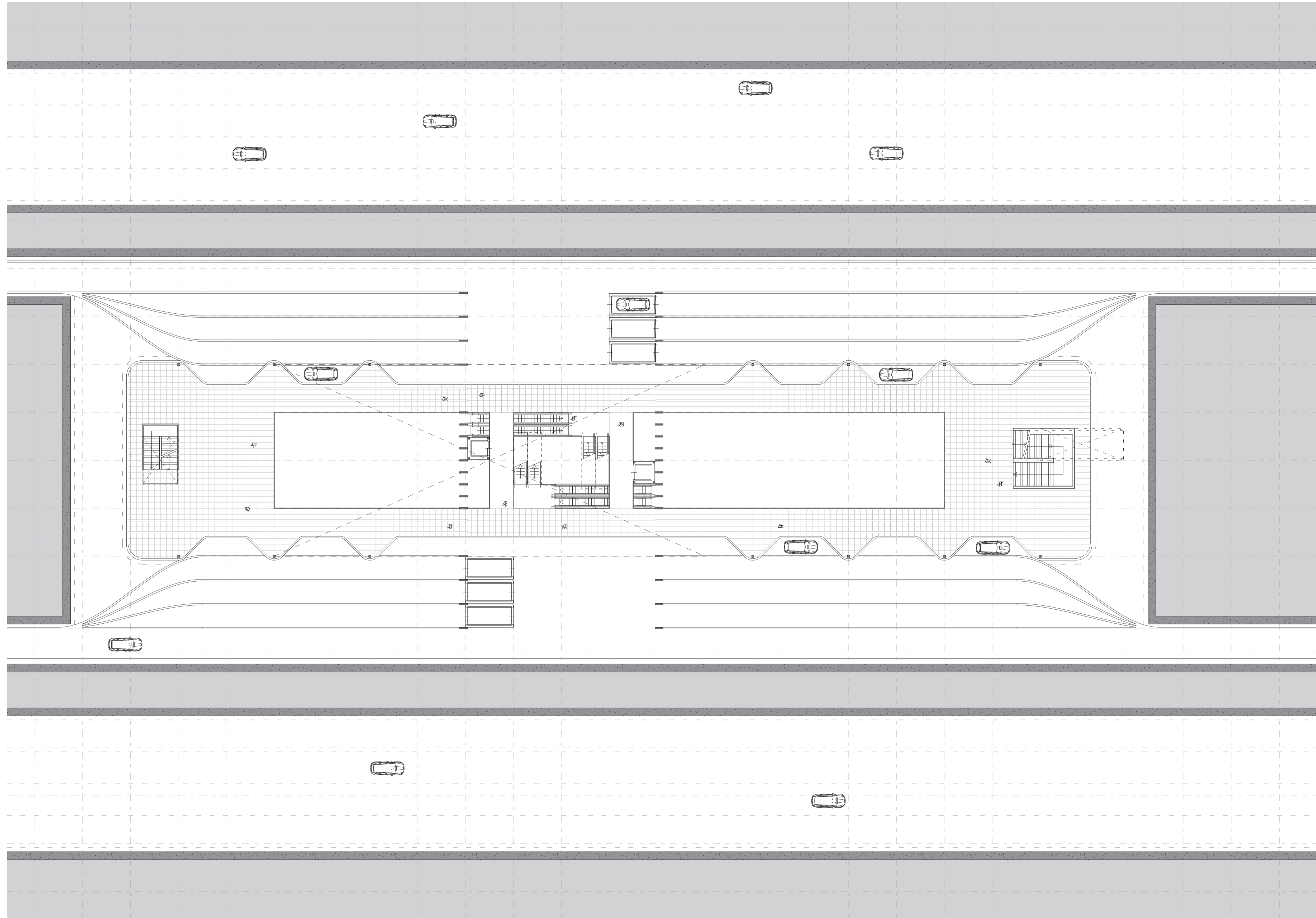
the border node
havenstad mobility



BIKE PARKING PLAN



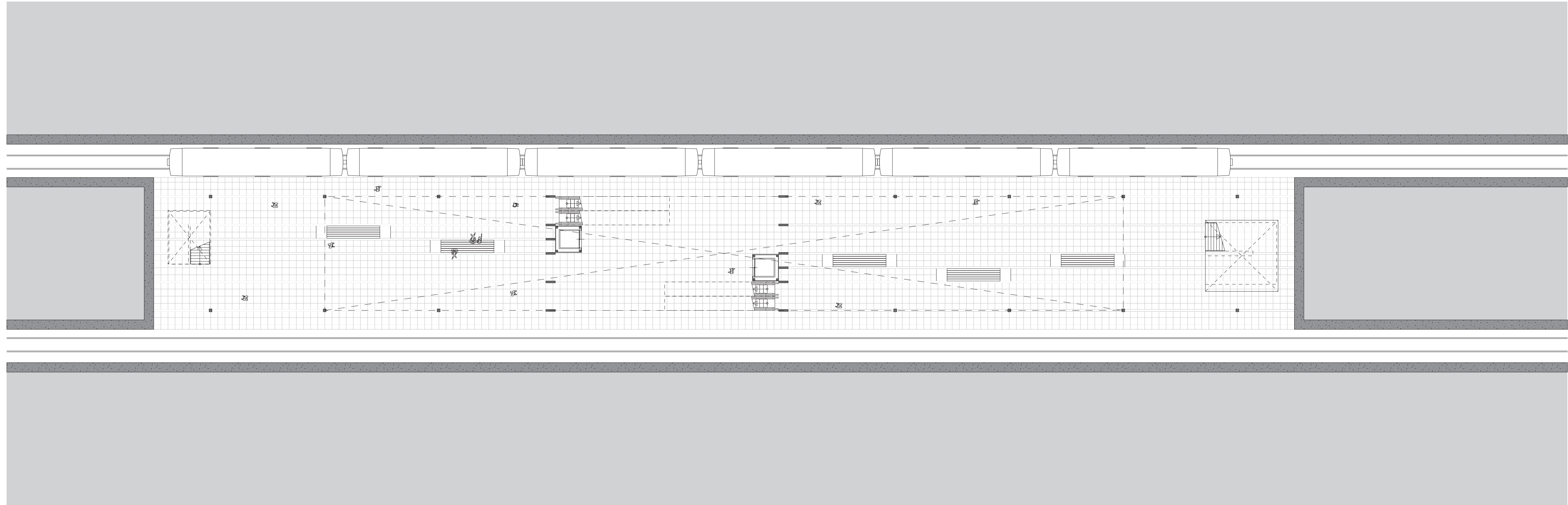
the border node
havenstad mobility



AUTOMOTIVE PLATFORM PLAN



the border node
havenstad mobility

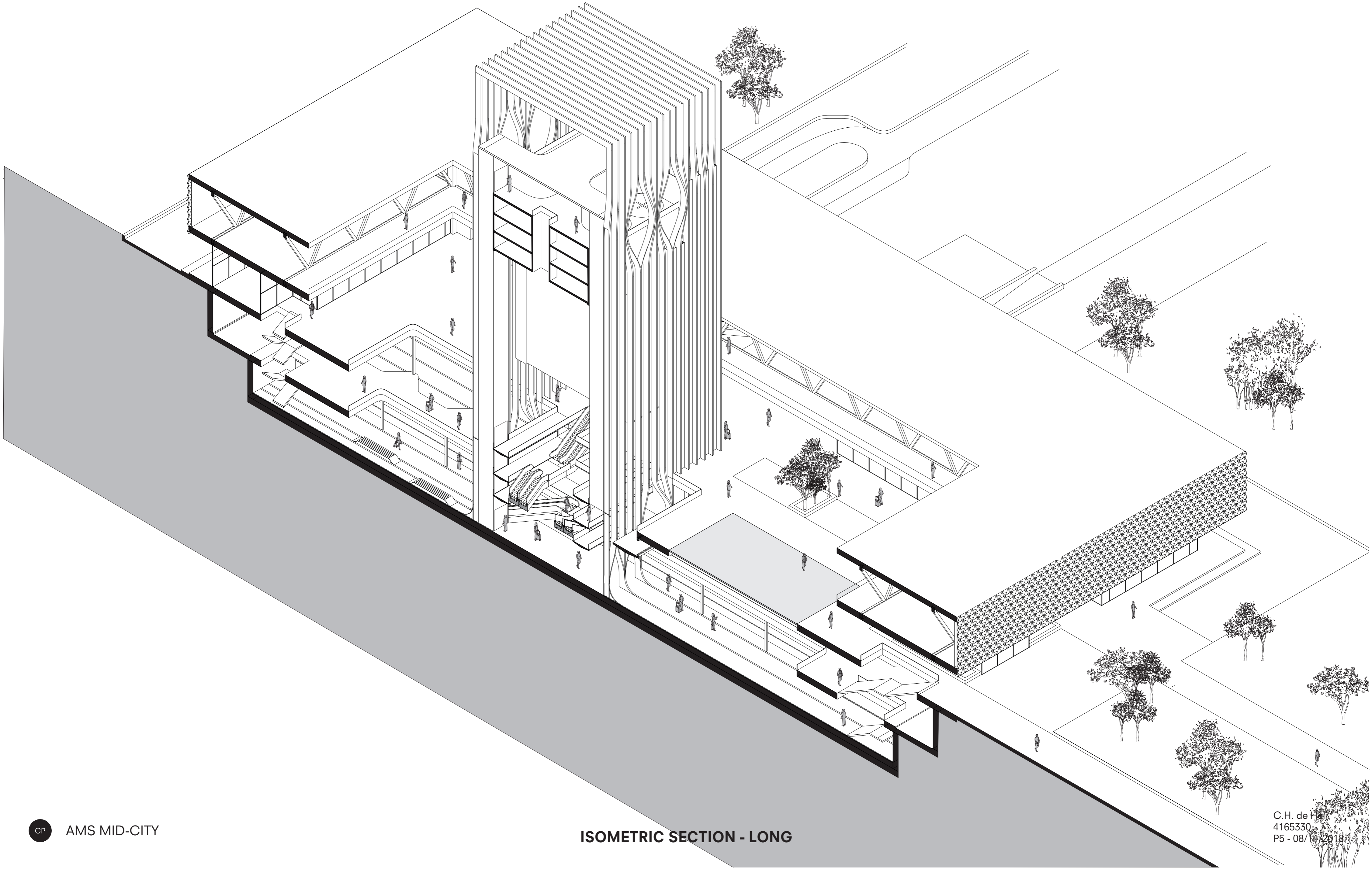


METRO PLATFORM PLAN



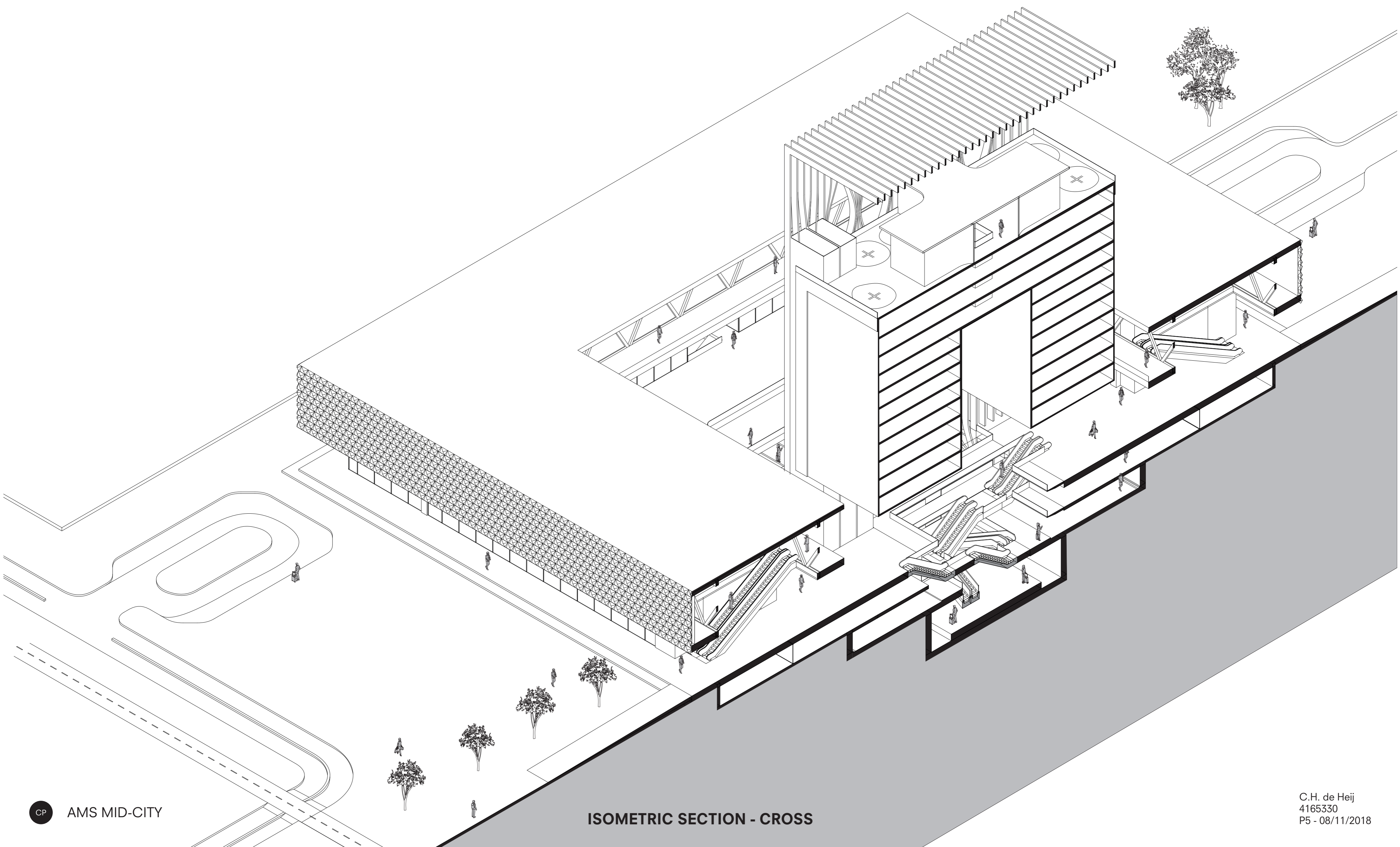
the border node

havenstad mobility

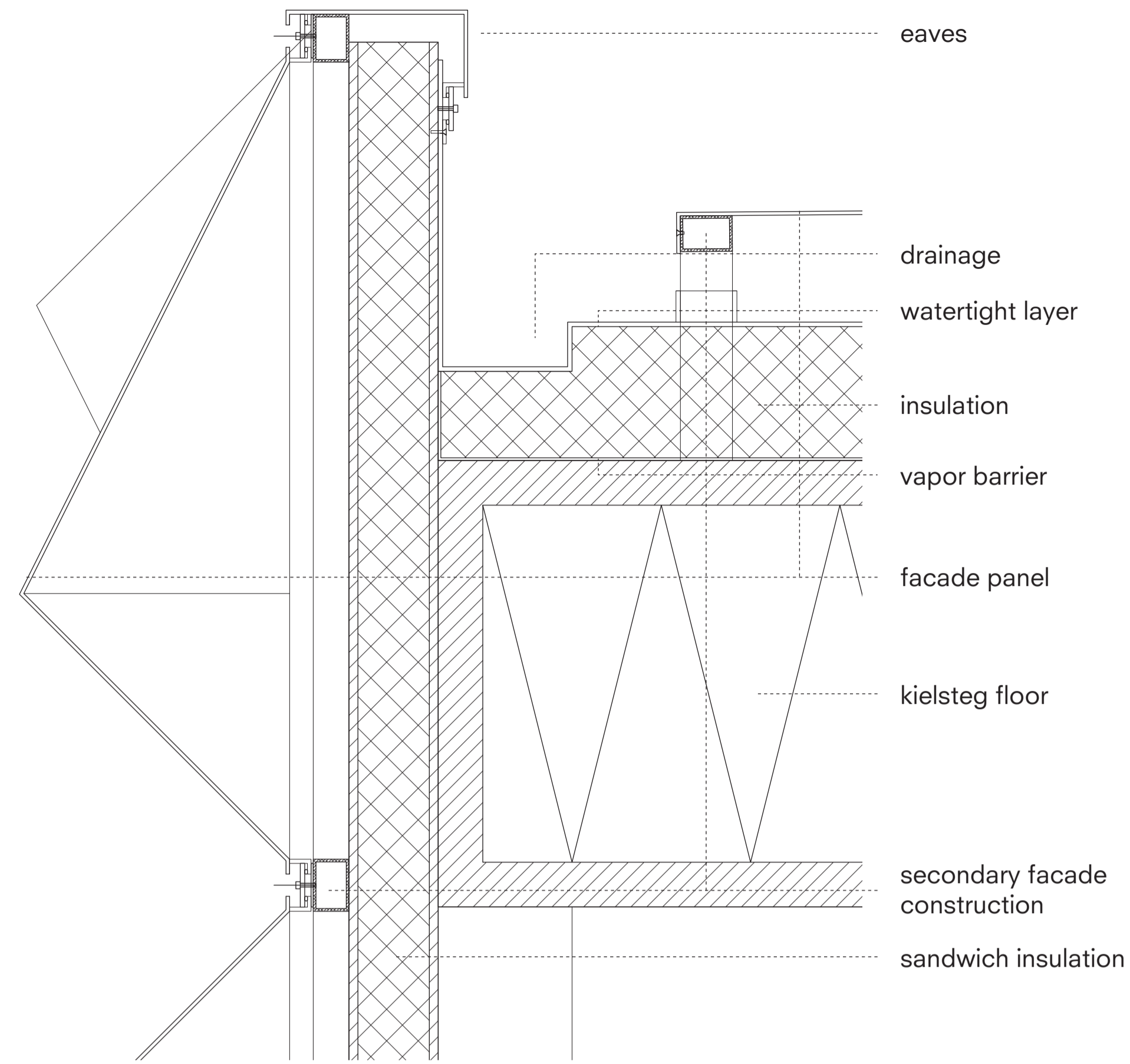


the border node

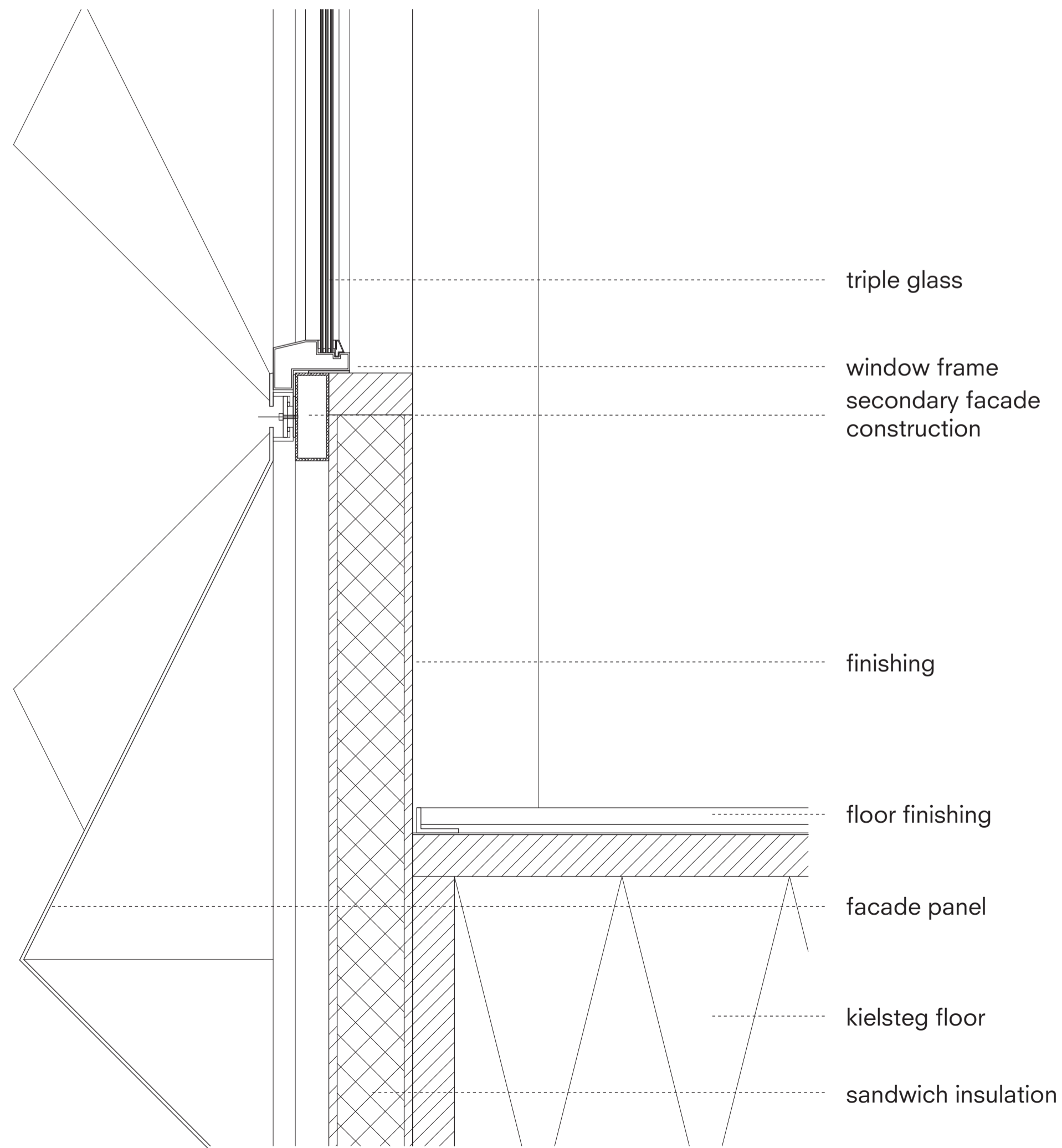
havenstad mobility



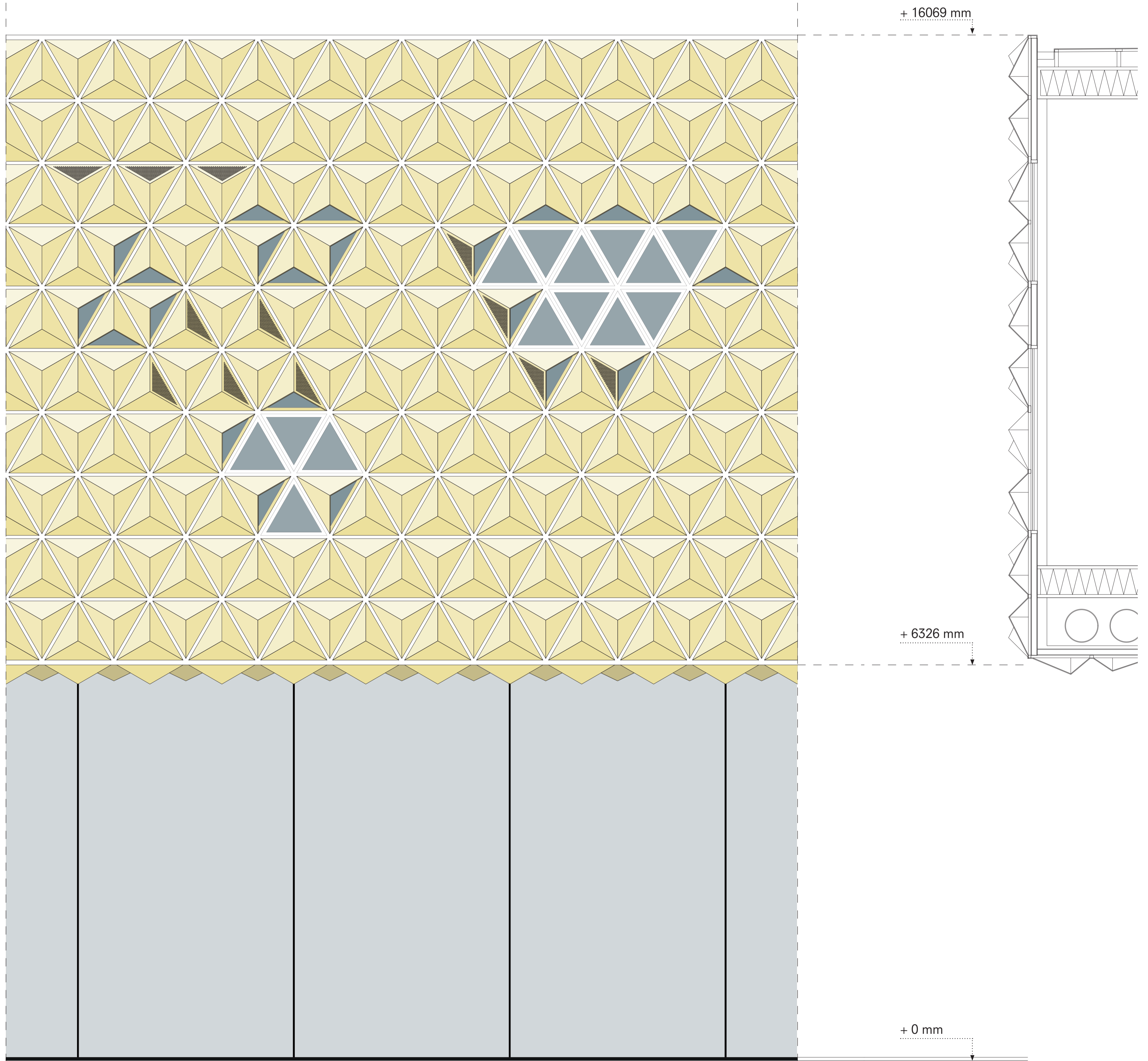
the border node
havenstad mobility



- eaves
- drainage
- watertight layer
- insulation
- vapor barrier
- facade panel
- kielsteg floor
- secondary facade construction
- sandwich insulation



- triple glass
- window frame secondary facade construction
- finishing
- floor finishing
- facade panel
- kielsteg floor
- sandwich insulation



+ 16069 mm

+ 6326 mm

+ 0 mm

the border node

havenstad mobility

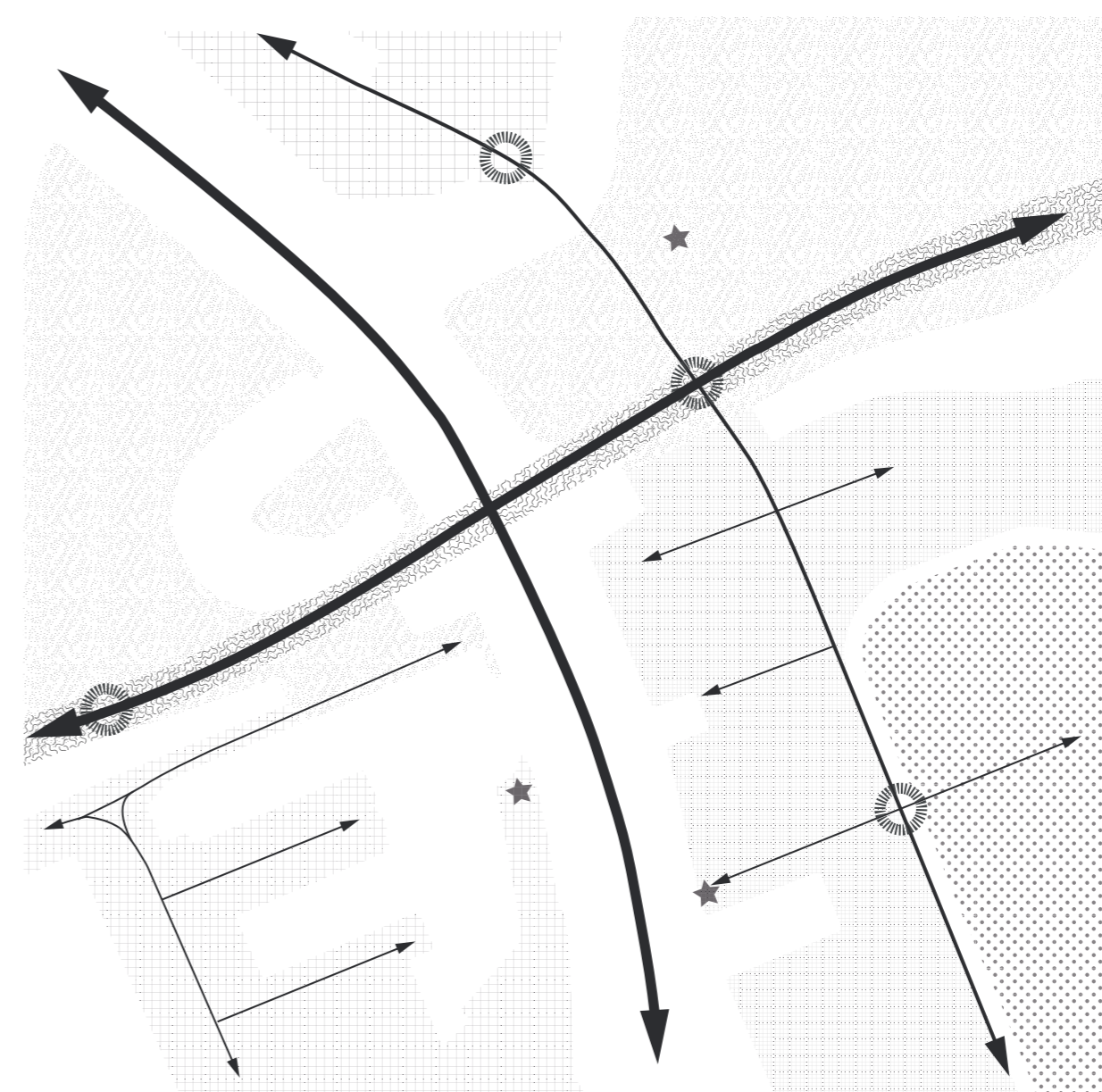


LOCATION IN AMSTERDAM

The site that is investigated is located in the north west of Amsterdam, on the border of the cities of Amsterdam and Zaandam. Today the site has an industrial harbor function, but because of the location of the city and the growth of the population, the city sees this site as a possible site for development.

As a group we have developed a vision and strategy on how this site can develop up to 2050 and onwards. The developments contain foremost development of residential buildings and working places. With our strategy we add a connection over the IJ in the form of a green bridge, and we say that the petroleum storage has to move to unlock this area for development. The land that is freed by this move is turned into a park, to extend the green fingers in o Amsterdam.

Our projects, are focusing on the two main axis in our site, along the IJ and across the IJ.



GROUP STRATEGY

- ★ landmark
- Metro station
- Ecology park
- Eco-bridge
- Creative north
- Center-urban neighbourhood
- Mixed urban neighbourhood
- Tuindorp oostzaan
- ▬ Flows along and across the IJ river
- ▬ Metro line
- ▬ Flows to water

GROUP STRATEGY