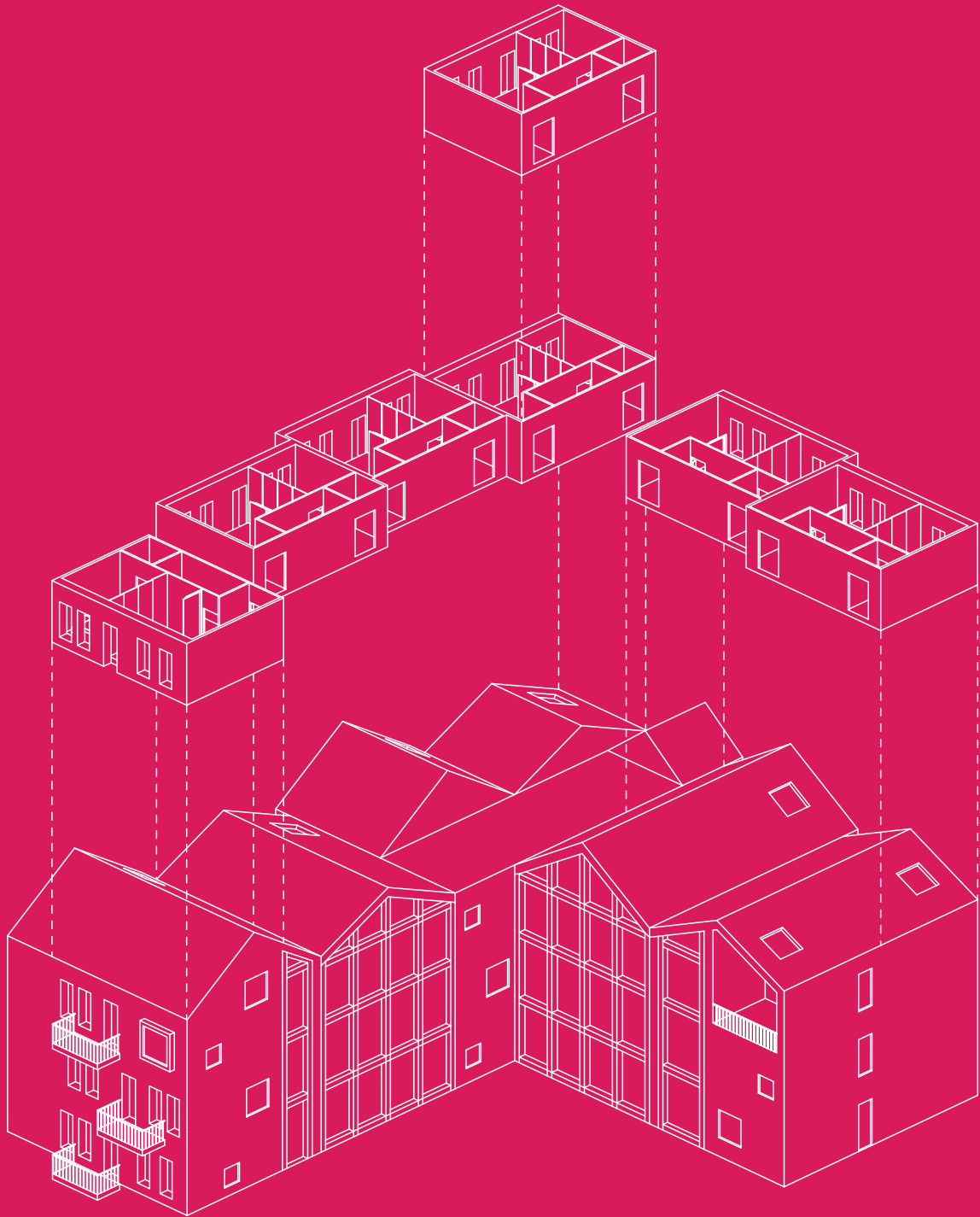


Towards a dementia proof society

Design book



AR3AD133 - Dwelling Graduation Studio

Rozemarijn Peeters | 4382358

July 2020 | TU Delft

Colophon

Delft University of Technology

MSc Architecture, Urbanism and Building Sciences

MSc3 Dutch Housing Graduation Studio 2019-2020

AR3AD133 Designing for care

Student

Rozemarijn Peeters

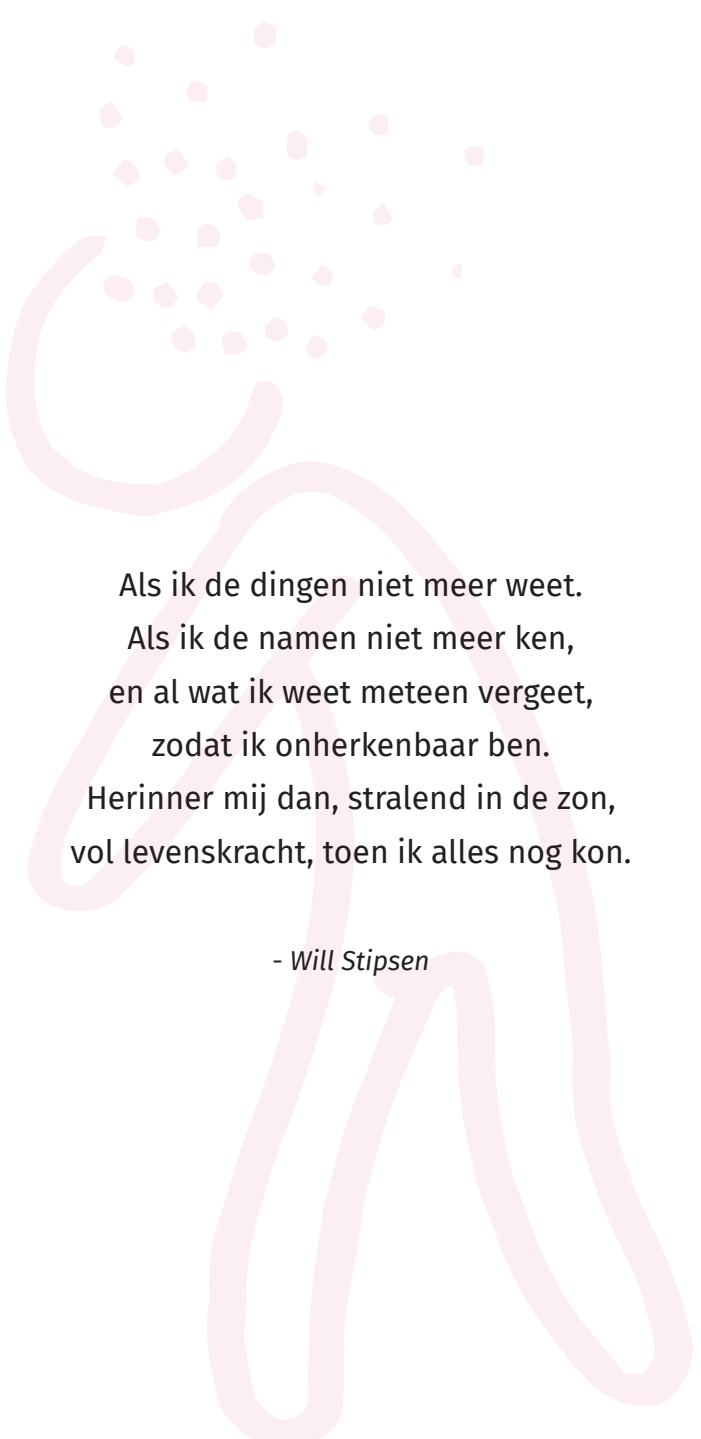
4382358

Tutors

Birgit Jürgehake

Paddy Tomesen

Mo Sedighi



Als ik de dingen niet meer weet.
Als ik de namen niet meer ken,
en al wat ik weet meteen vergeet,
zodat ik onherkenbaar ben.
Herinner mij dan, stralend in de zon,
vol levenskracht, toen ik alles nog kon.

- Will Stipsen

Table of Content

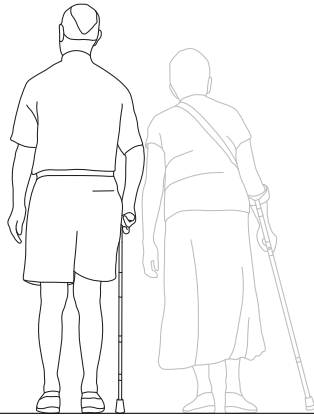
The target group	p. 7
The flexible private unit	p. 10
The collective living	p. 18
The public masterplan	p. 26
The city	p. 29
Materials	p. 32
Elevations	p. 36
Sections	p. 40
Activity centre	p. 46
Facade fragments	p. 48
Details	p. 51
Climate and installations	p. 61
Construction	p. 63
The plan	p. 67

The target group

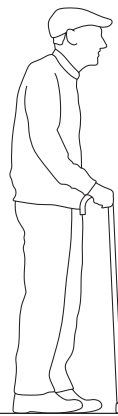
An aging group



A couple of 45 years or older.
No children living at home.
Taking care of each other



When the partner dies
and everything becomes
less mobile

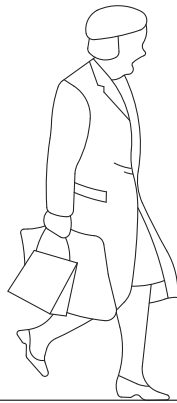


Not knowing who you
are anymore, but still a
valuable person

Time →



Single woman or men
of 45 years and older.
Willing to take care of
others



Independent but
supporting others in
their everyday life.



Slightly discovering
problems with
everyday life

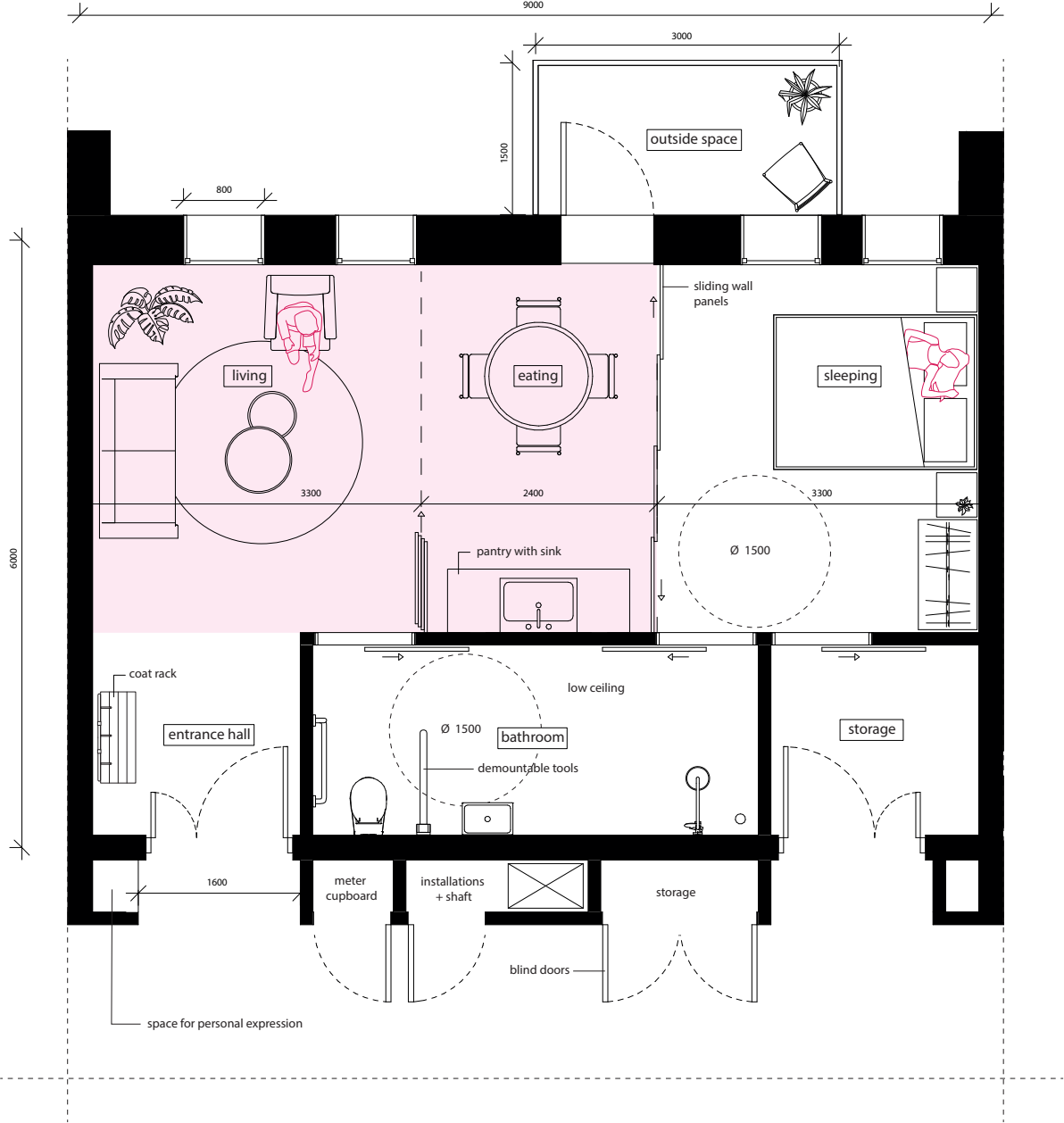


Lost track of time,
place and yourself.
But wants to be part
of something

Time →

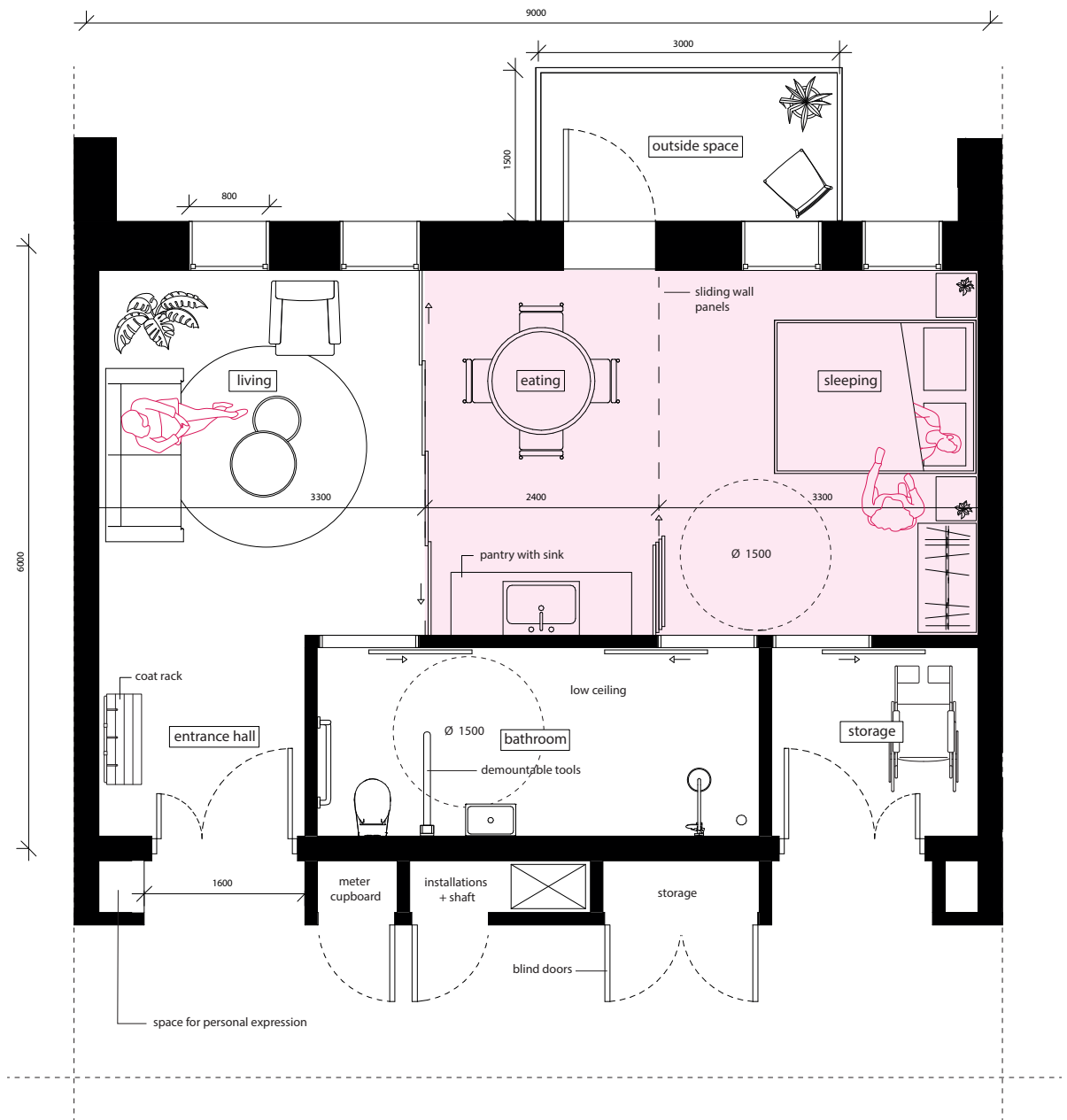
The flexible private unit

Normal situation



As the patient is changing

Care situation



so can the house

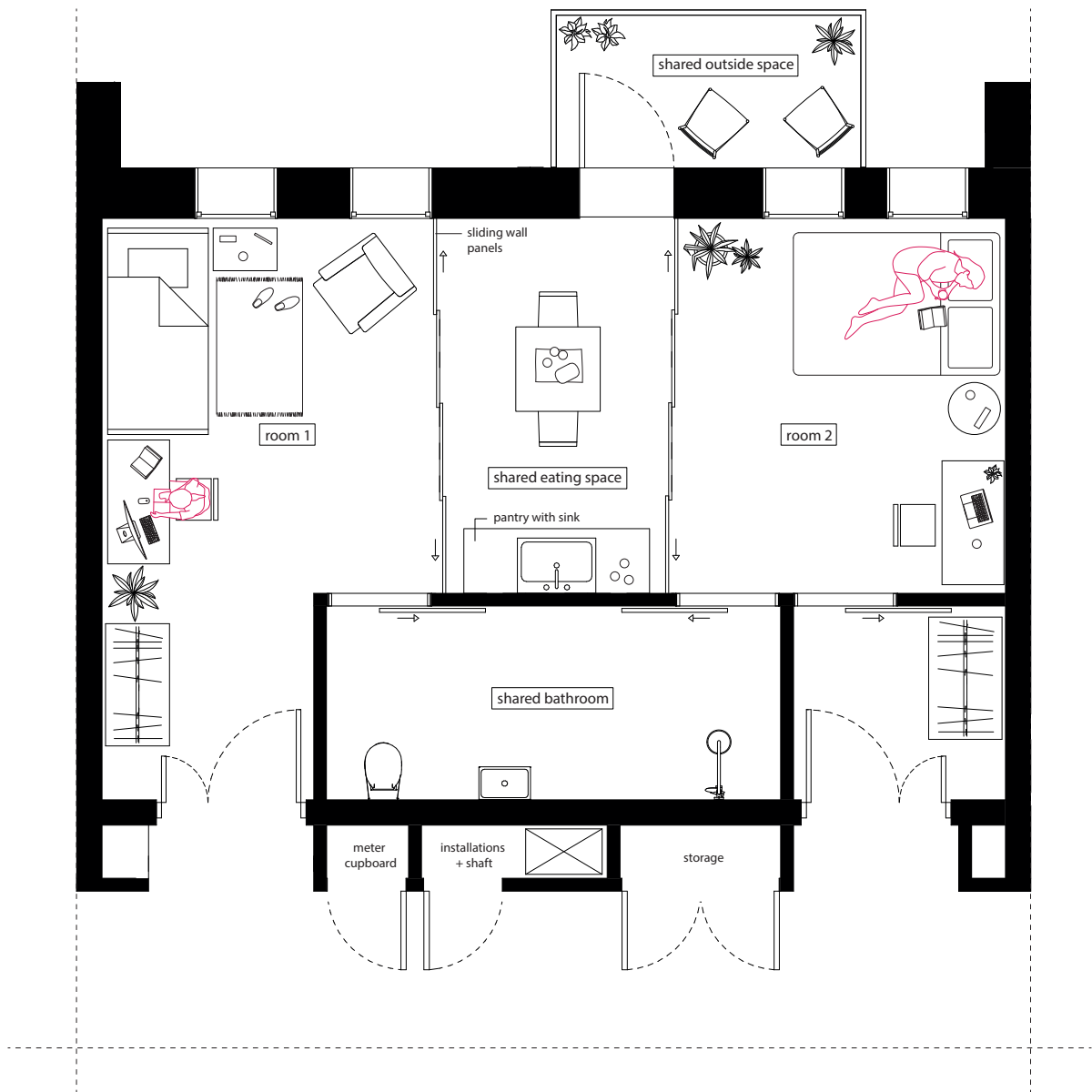
Impression



The flexible private unit

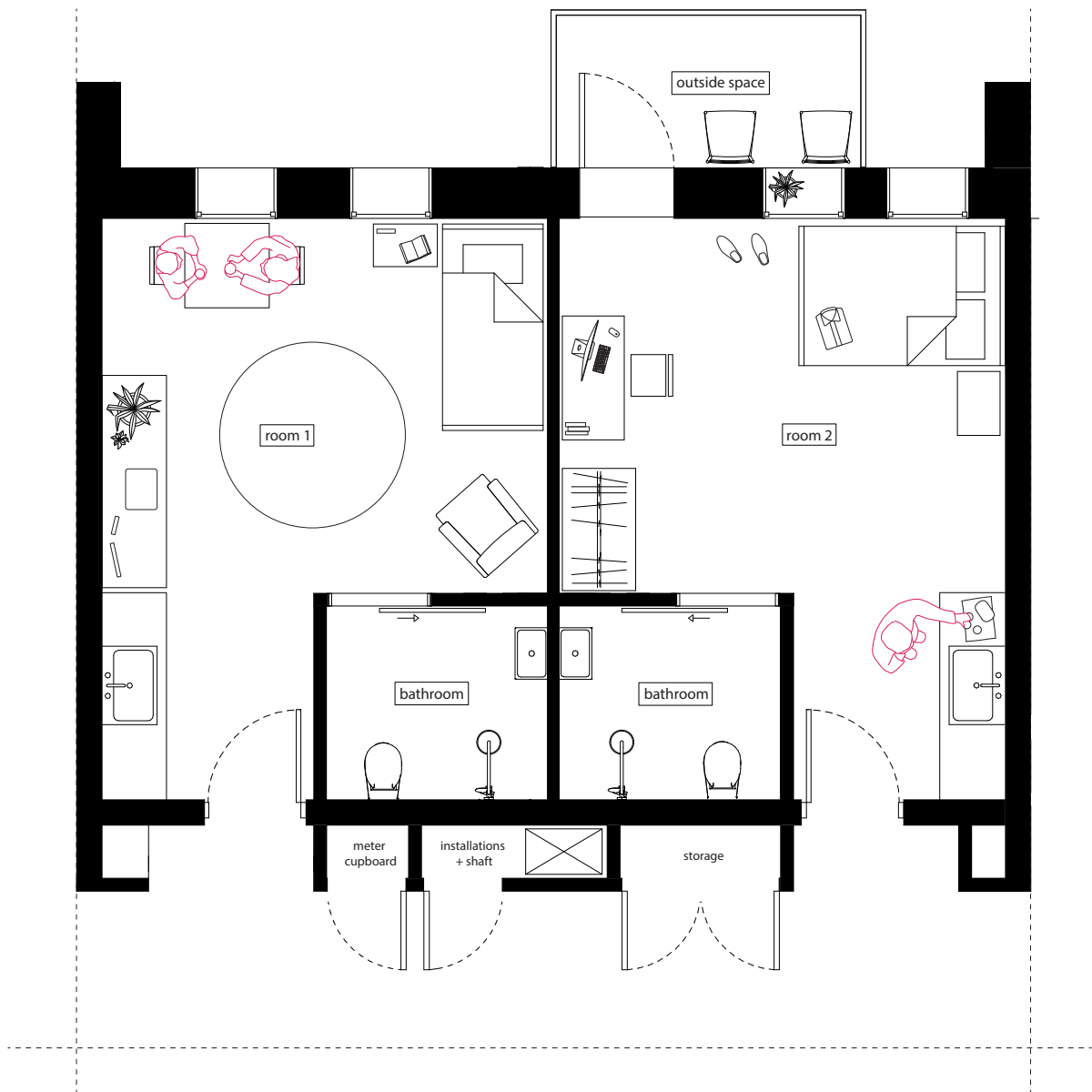
In the future

Future situation



Two students sharing one apartment

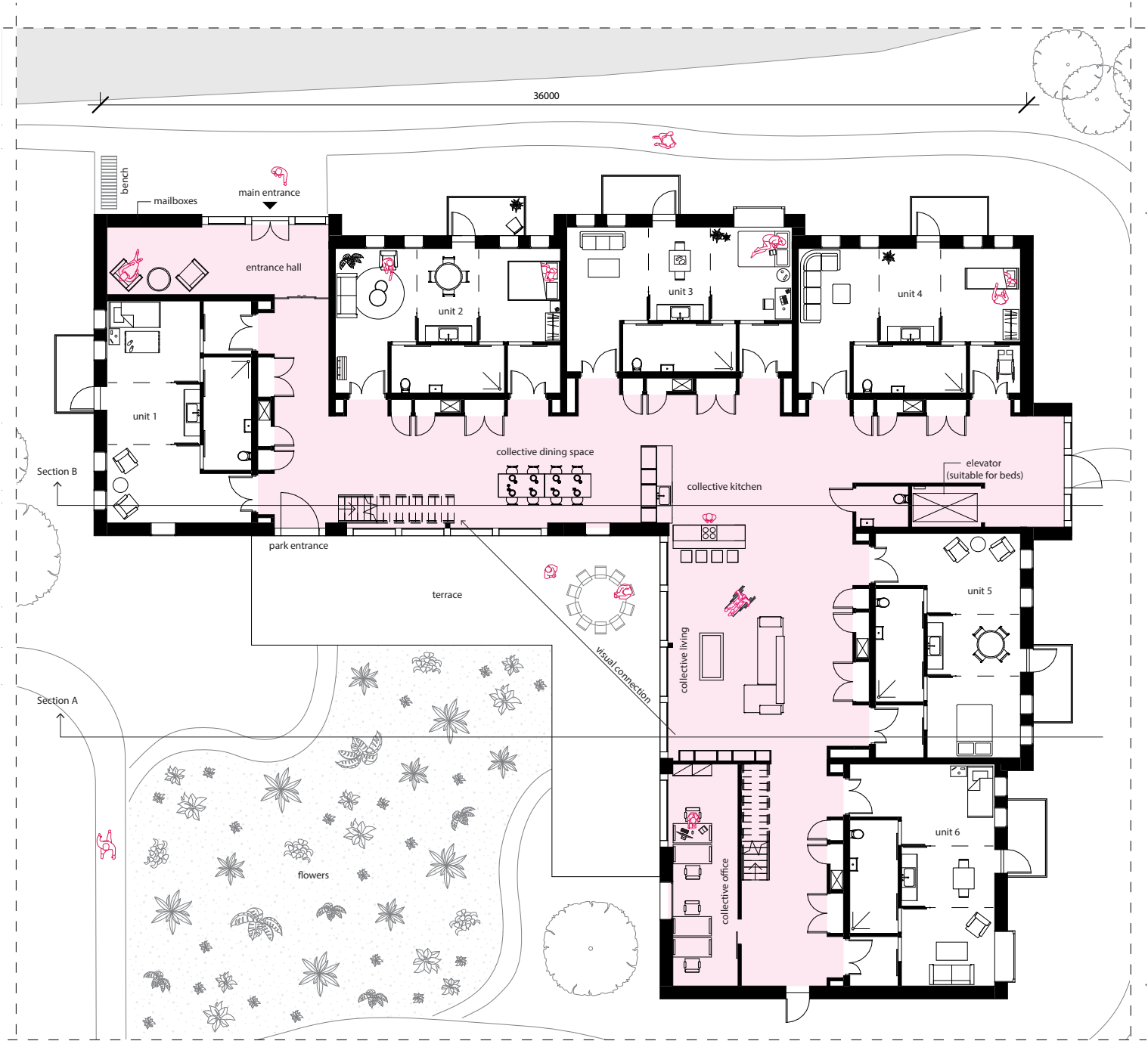
Future situation



One apartment transformed into two studios

The collective living

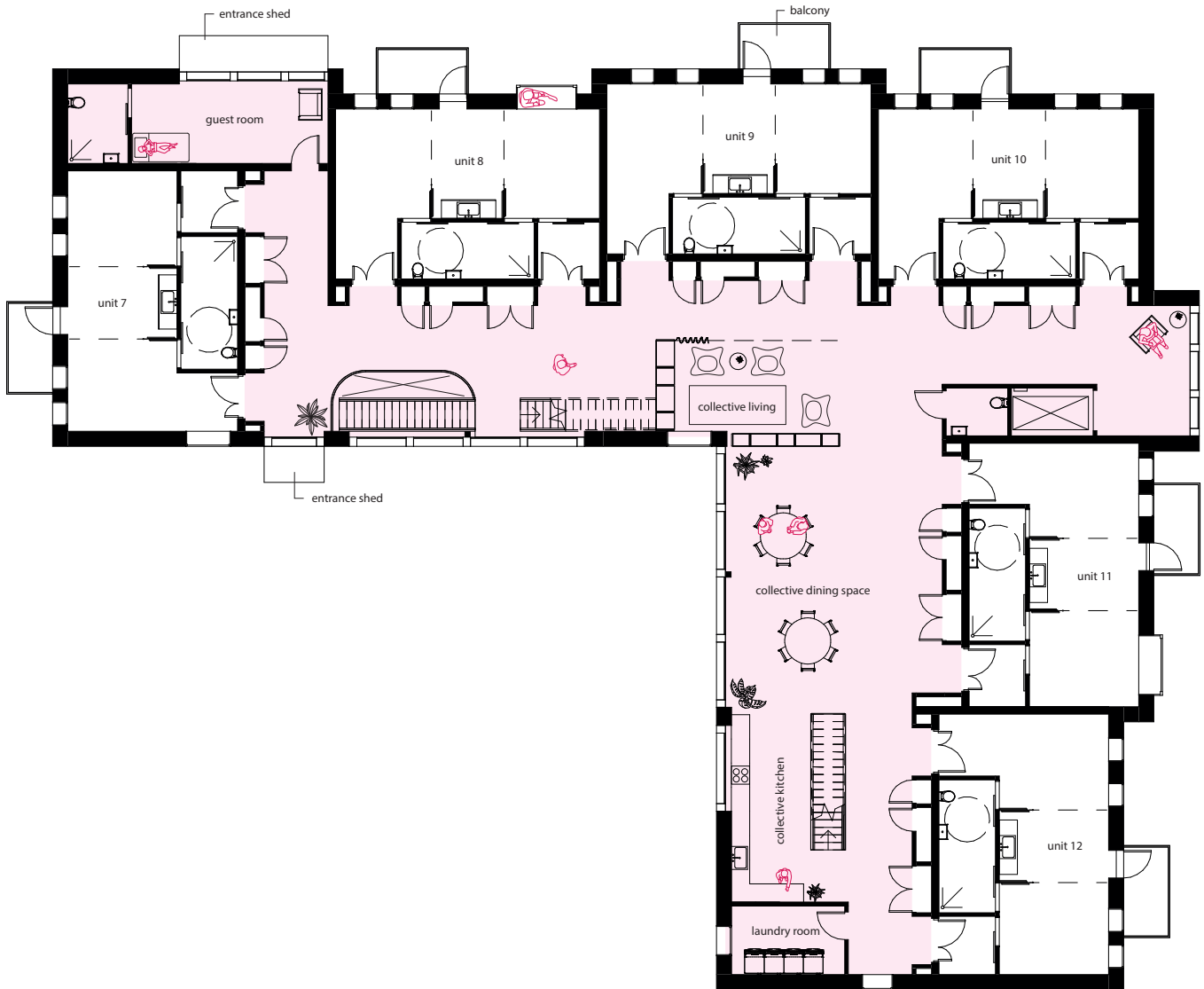
Ground floor



Impression



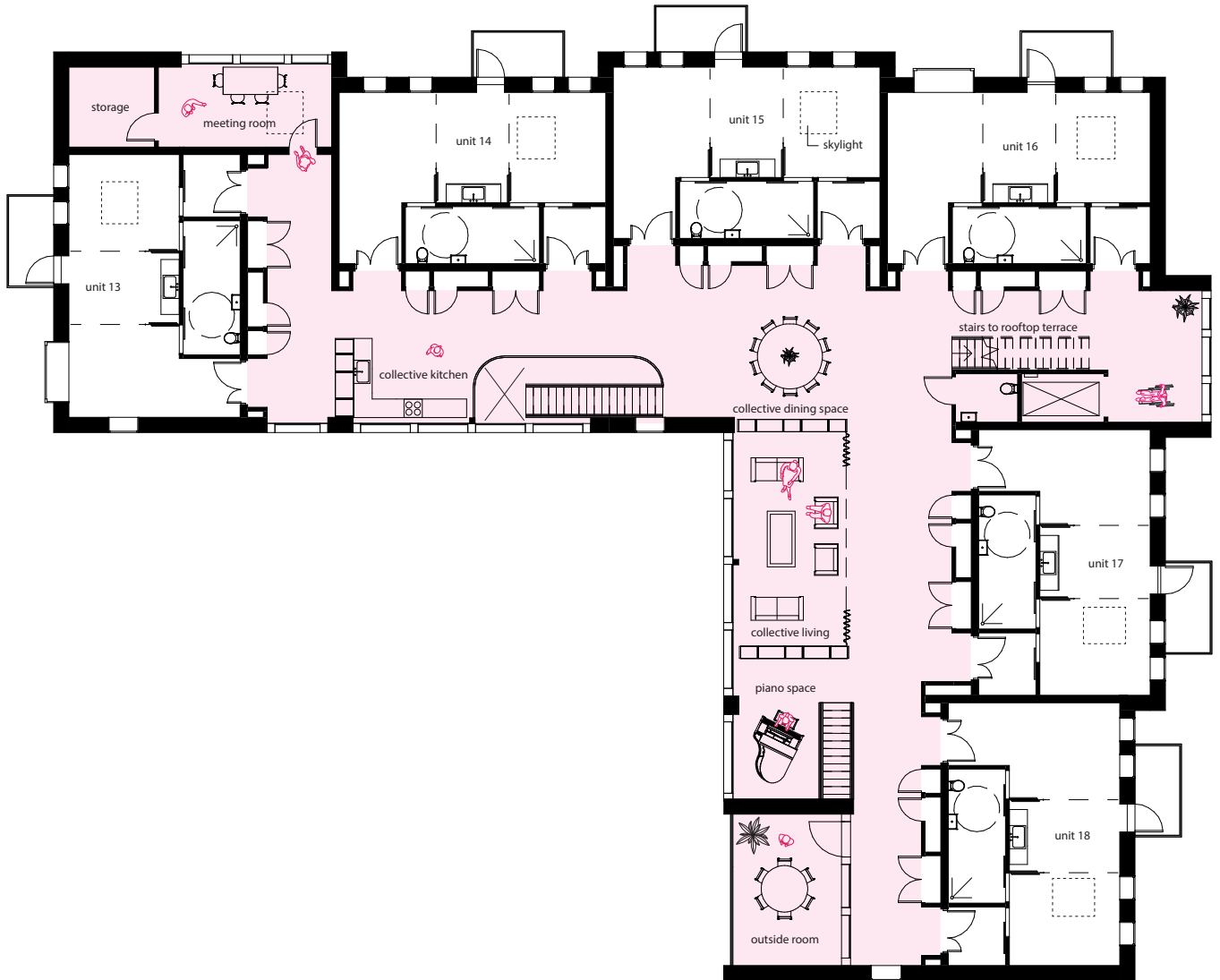
First floor



Impression



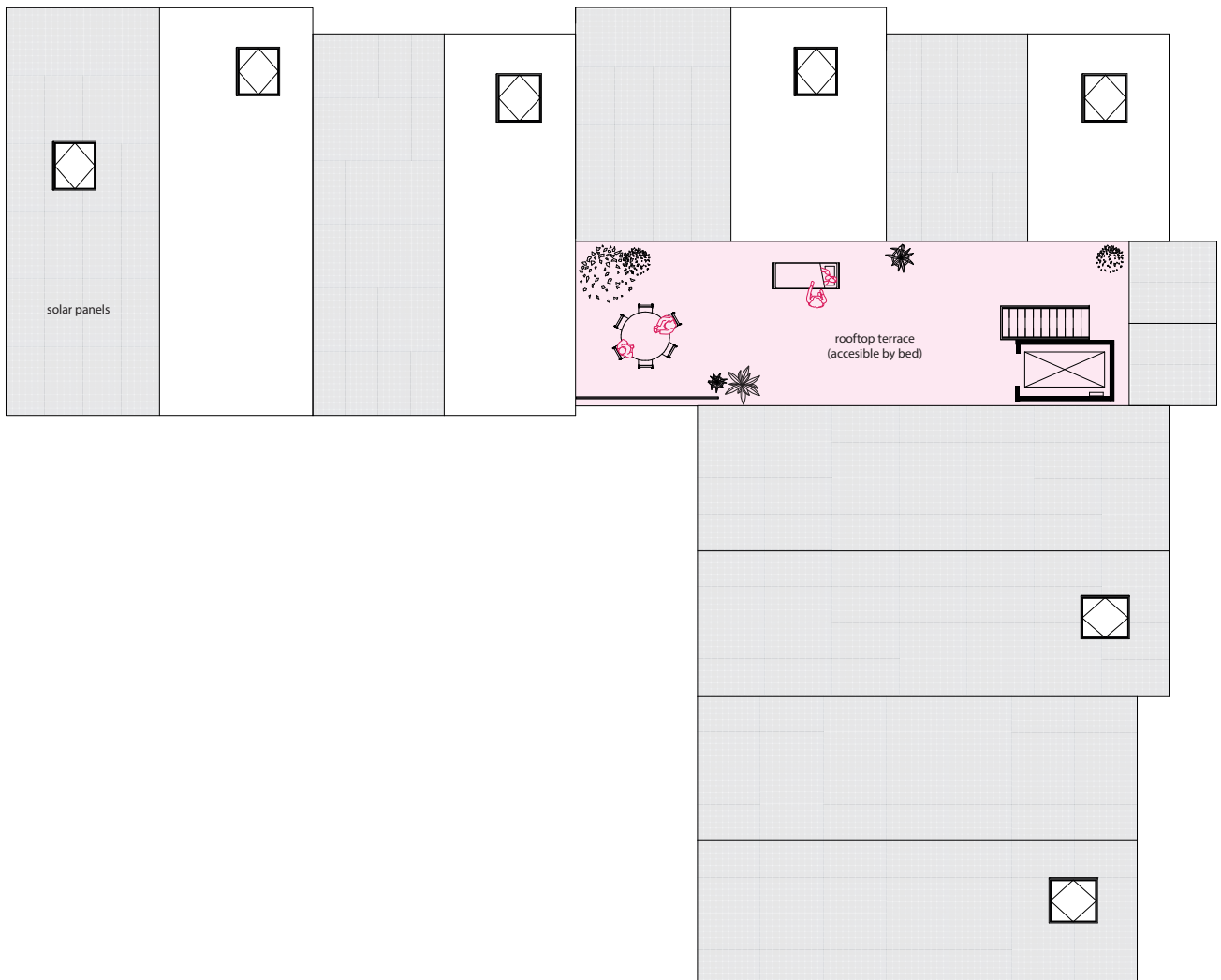
Second floor



Impression



Rooftop terrace



The public masterplan

a healing park



5 m

Impression



The city

Leiden



50 m

Materials

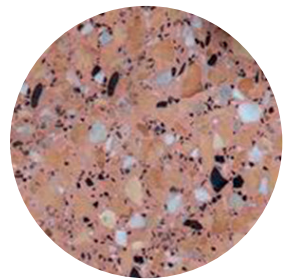
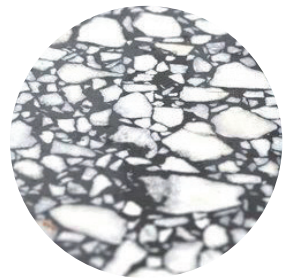
Exterior



Bird-eye view



Interior



Elevations

'Private' side



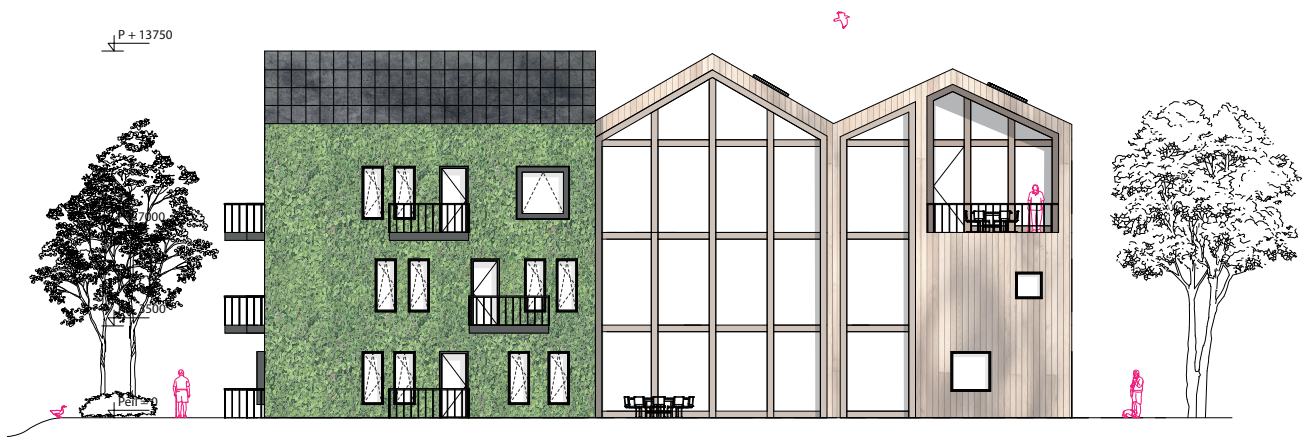
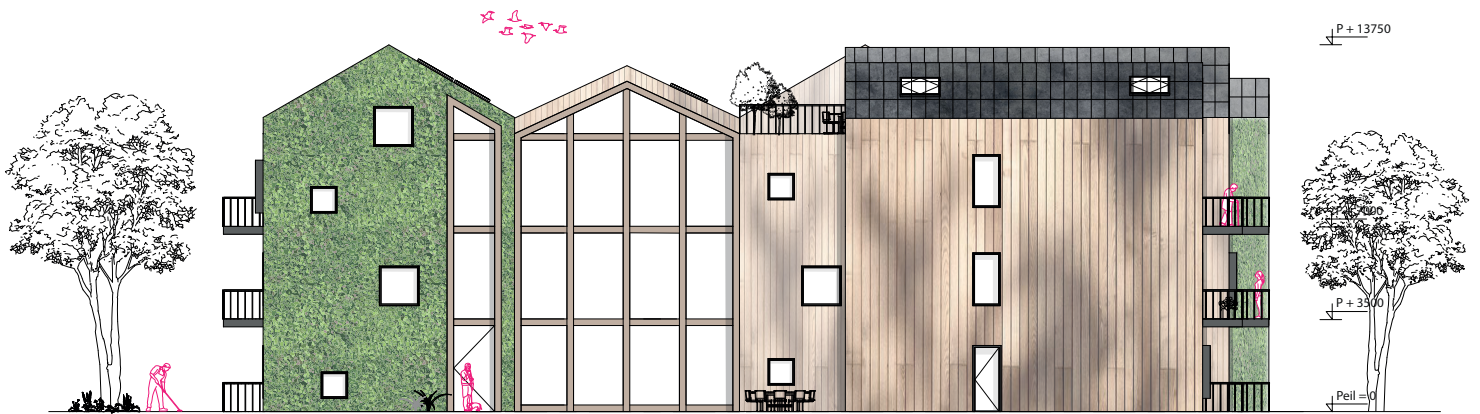
west elevation



north elevation

1 m

'Collective' side



south elevation

1 m

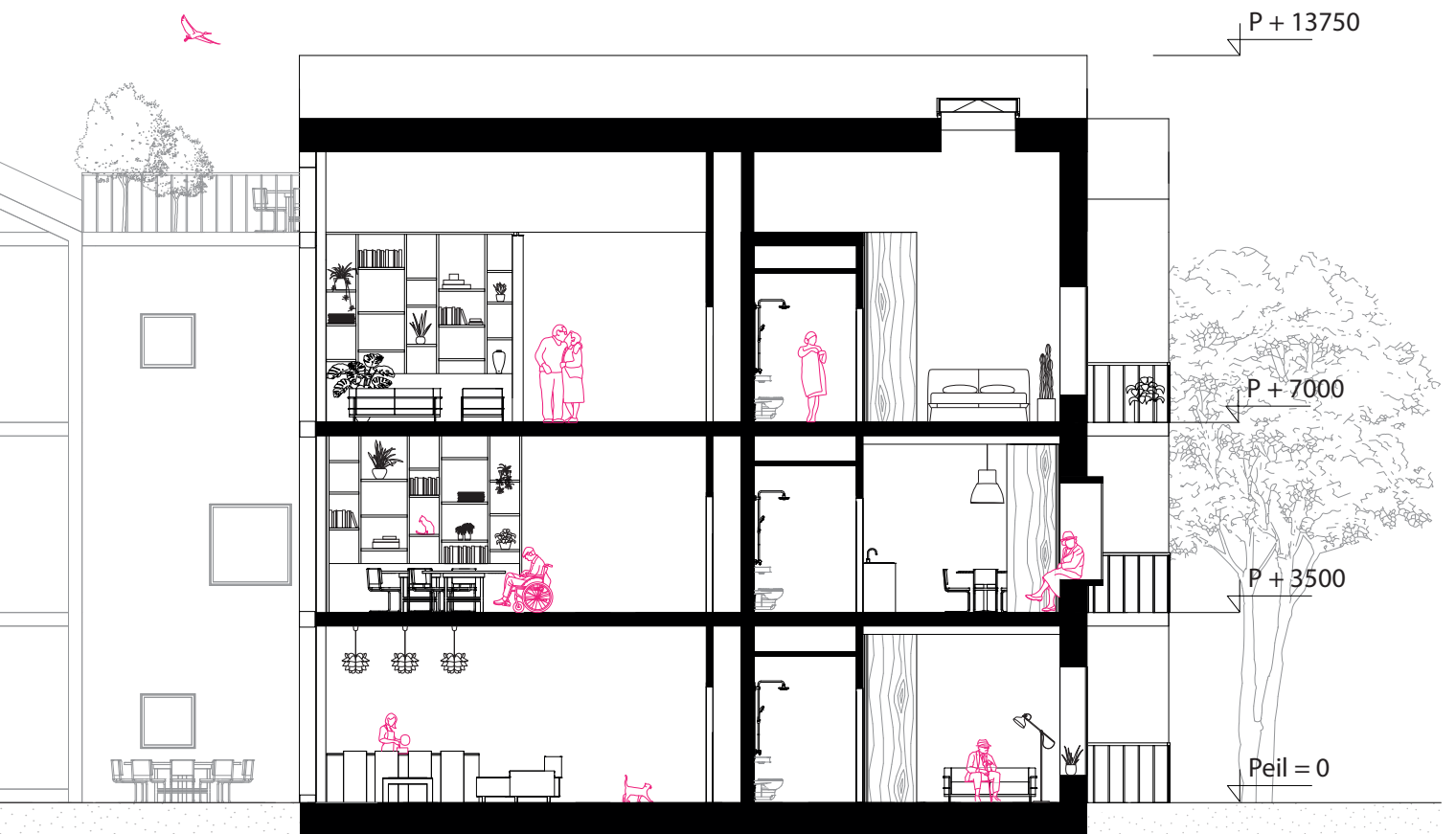
Impression



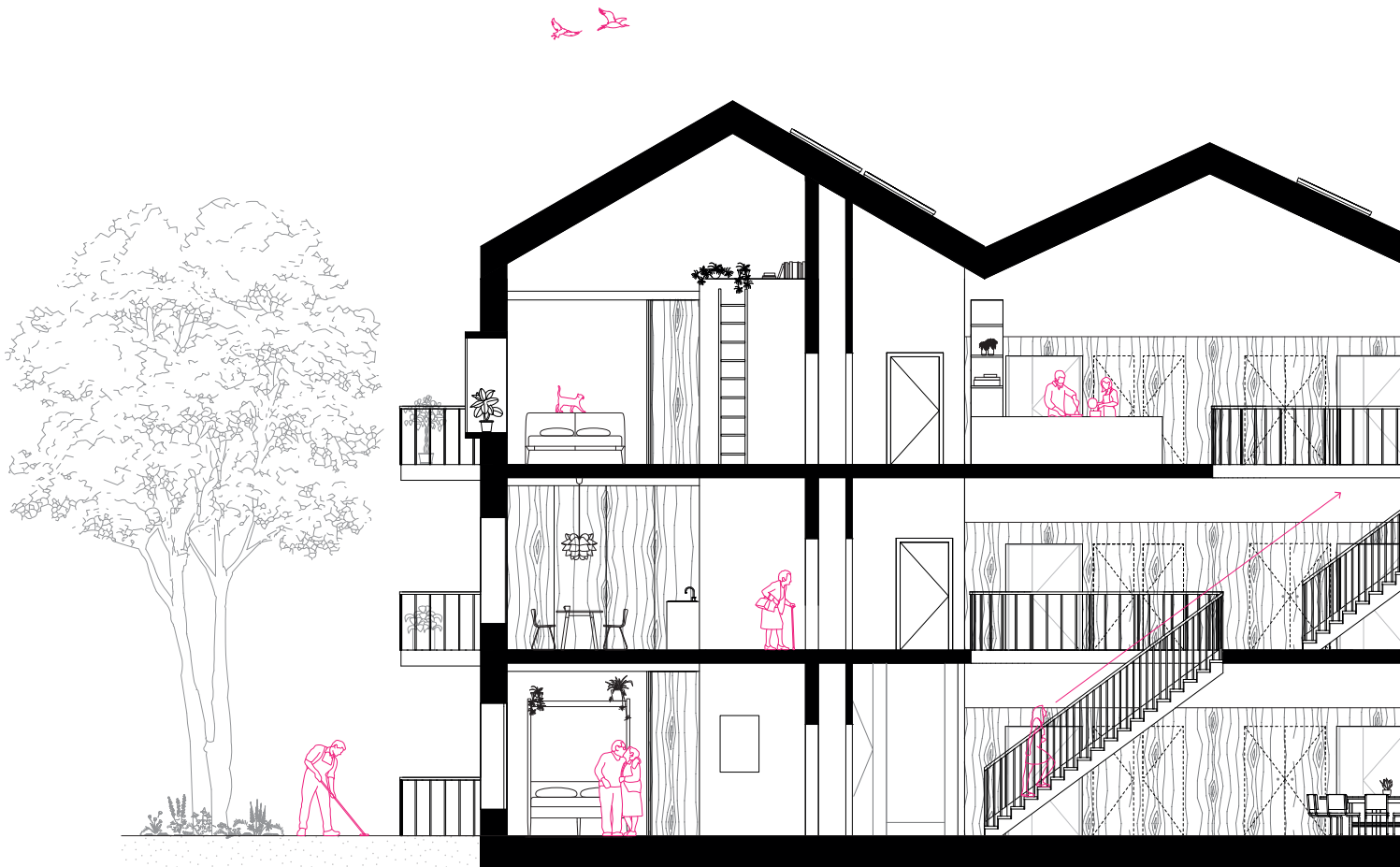
Sections



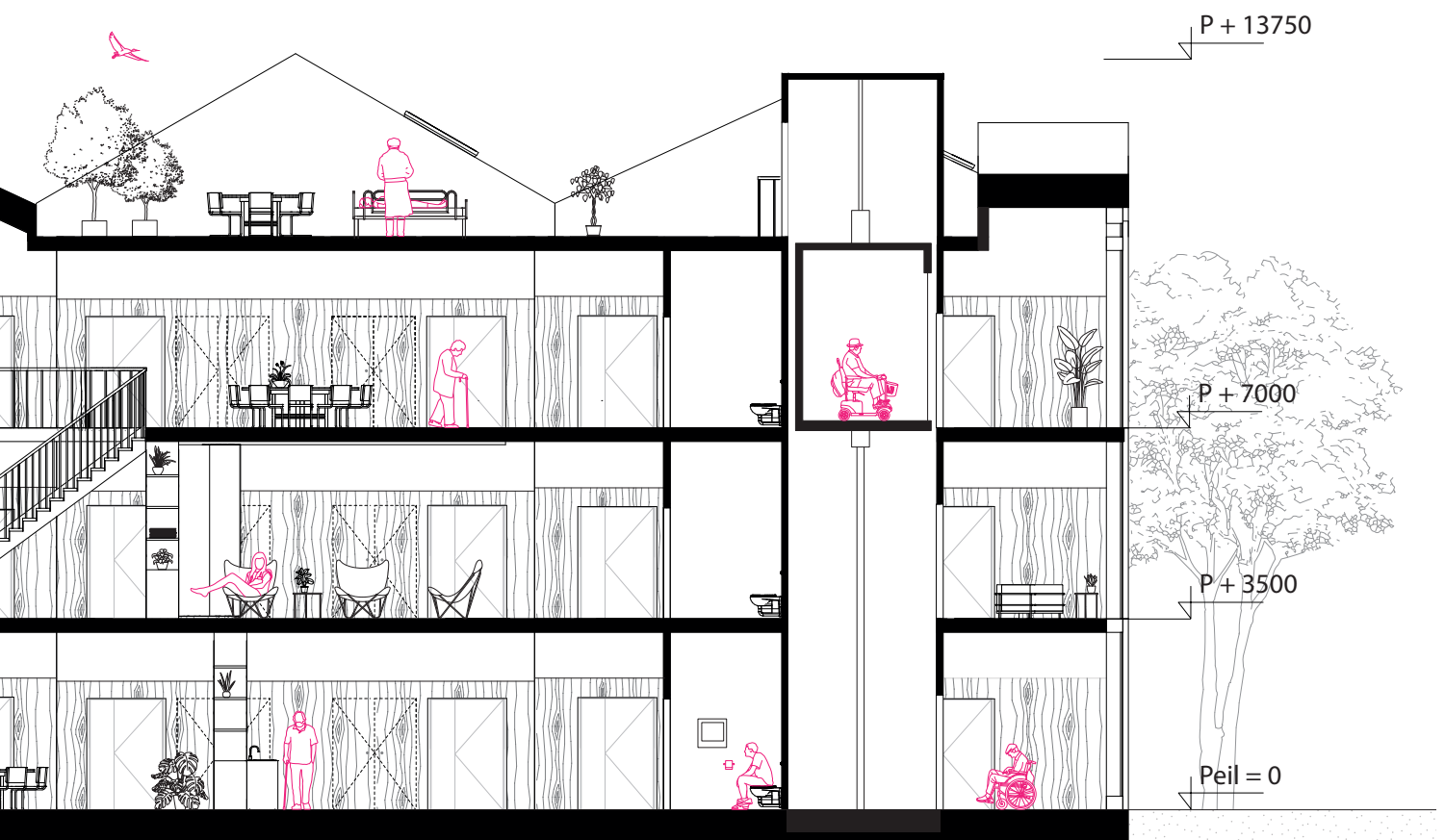
Section A



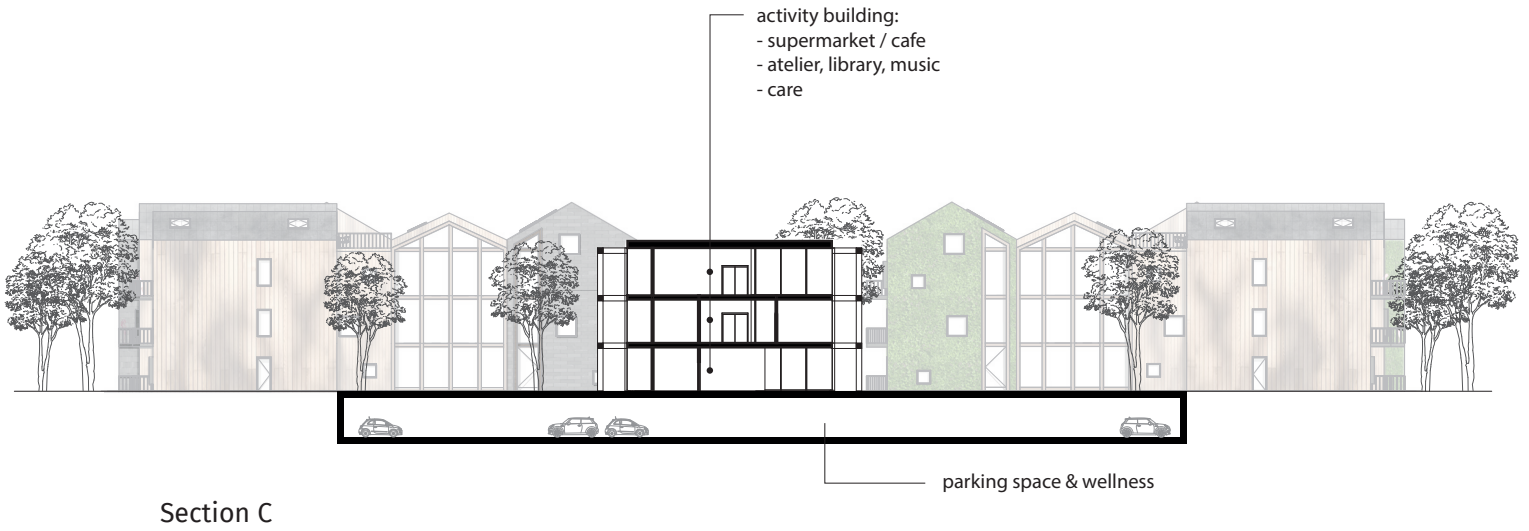
1 m



Section B

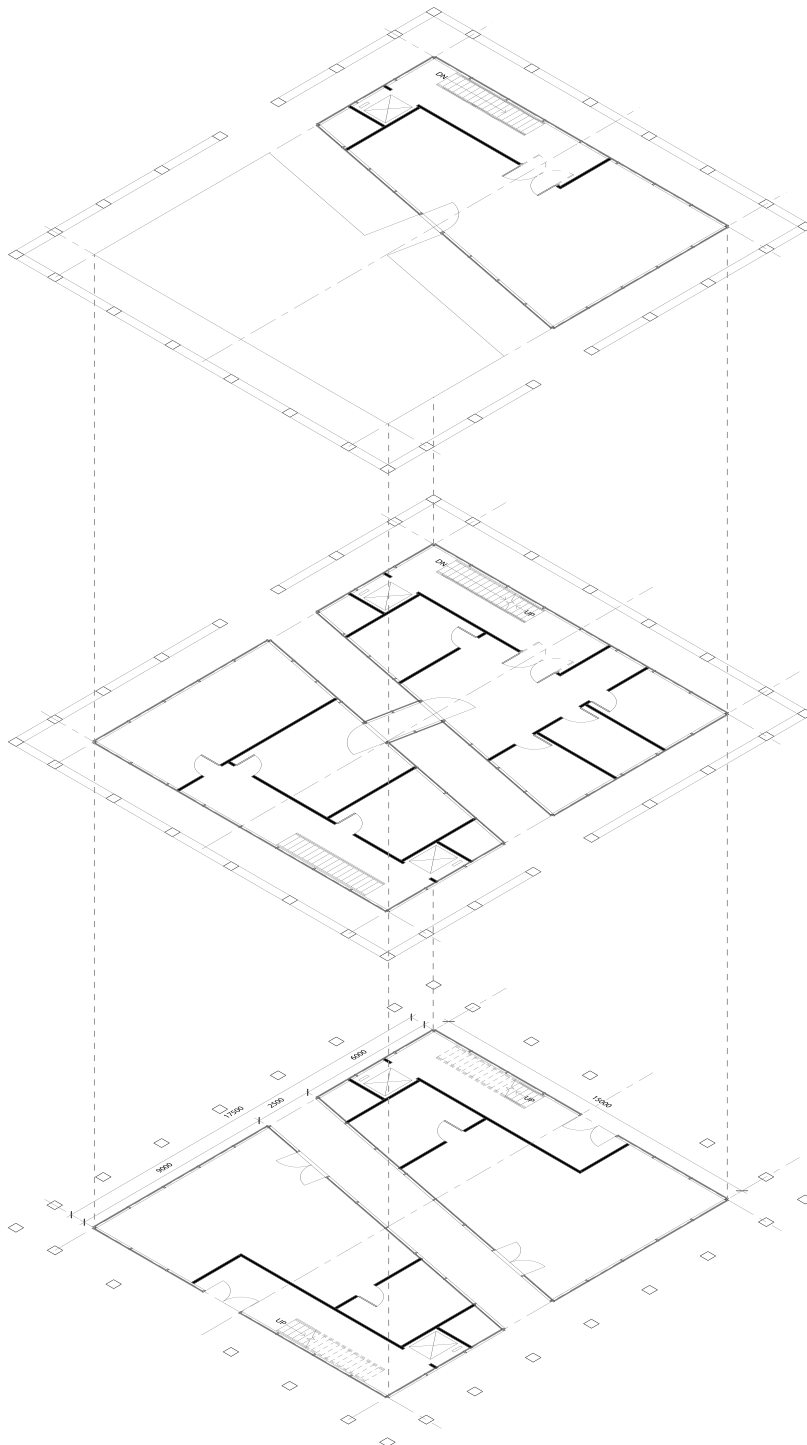
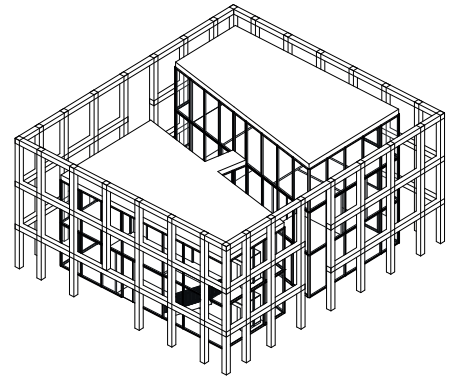


1 m



Activity centre

Community centre



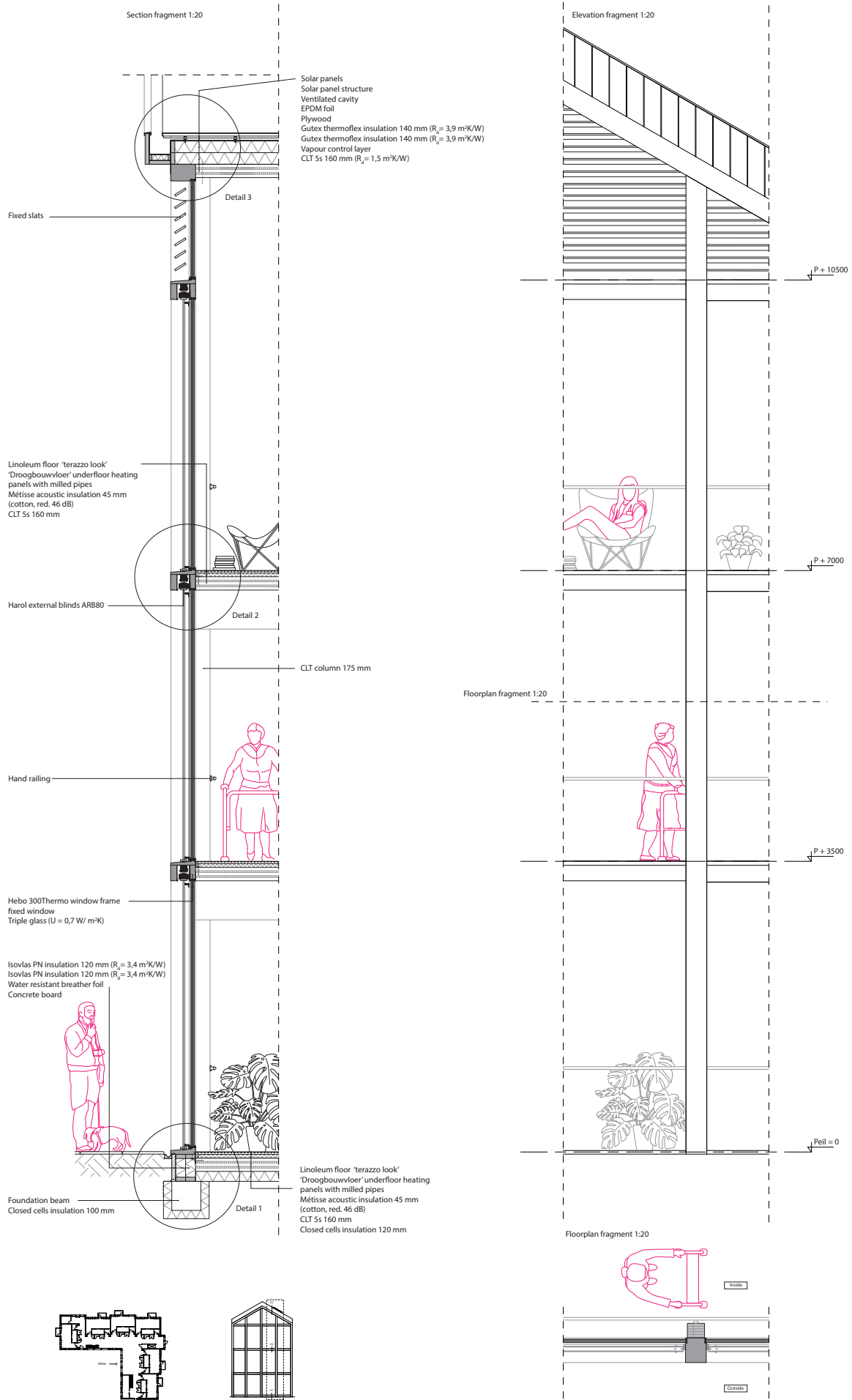
Floor +02:
- Extra care space 82 m²

Floor +01:
- Care space 82 m²
- Library 15 m²
- Atelier 36 m²
- Music space 25 m²

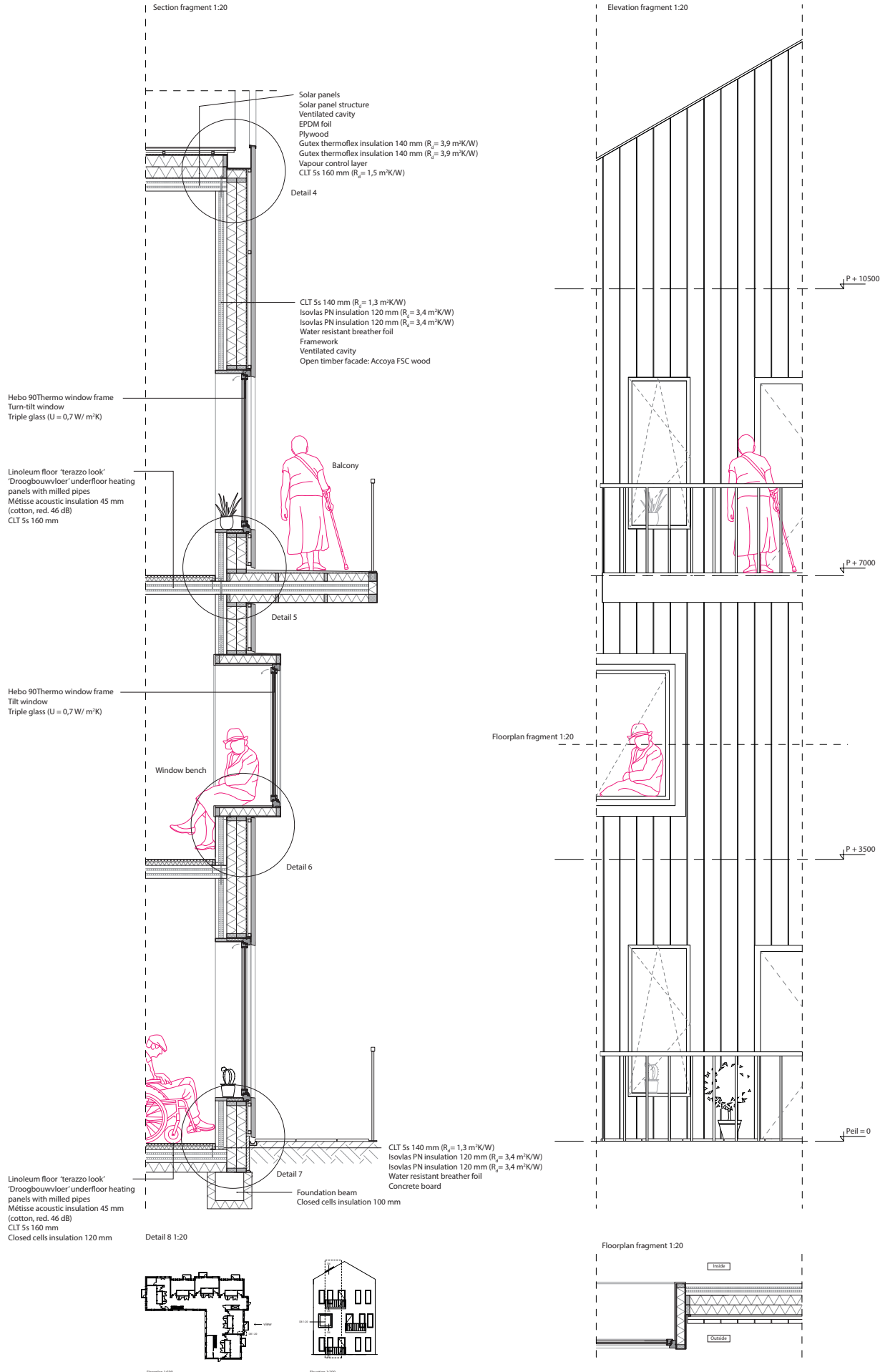
Floor 00:
- Cafe 82 m²
- AH to Go 82 m²

Façade fragment

Original scale 1:20

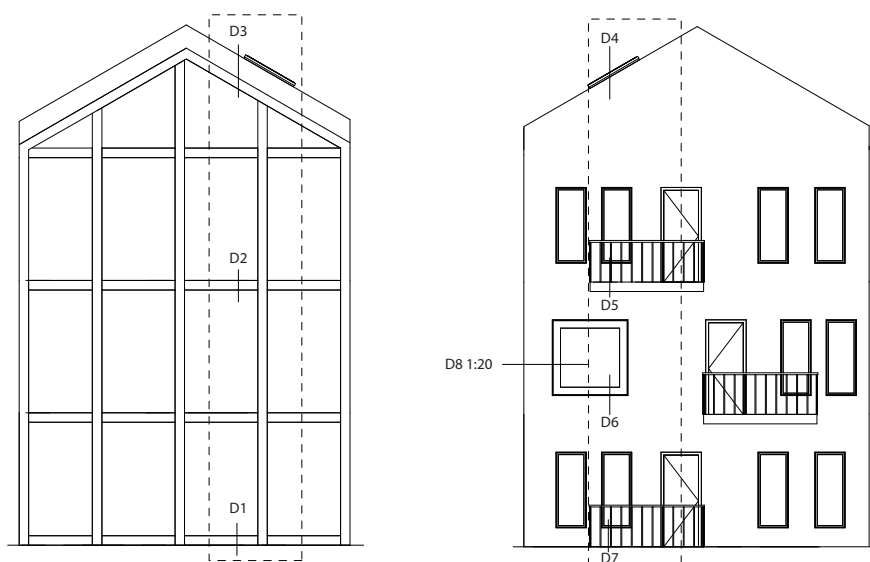


Original scale 1:20

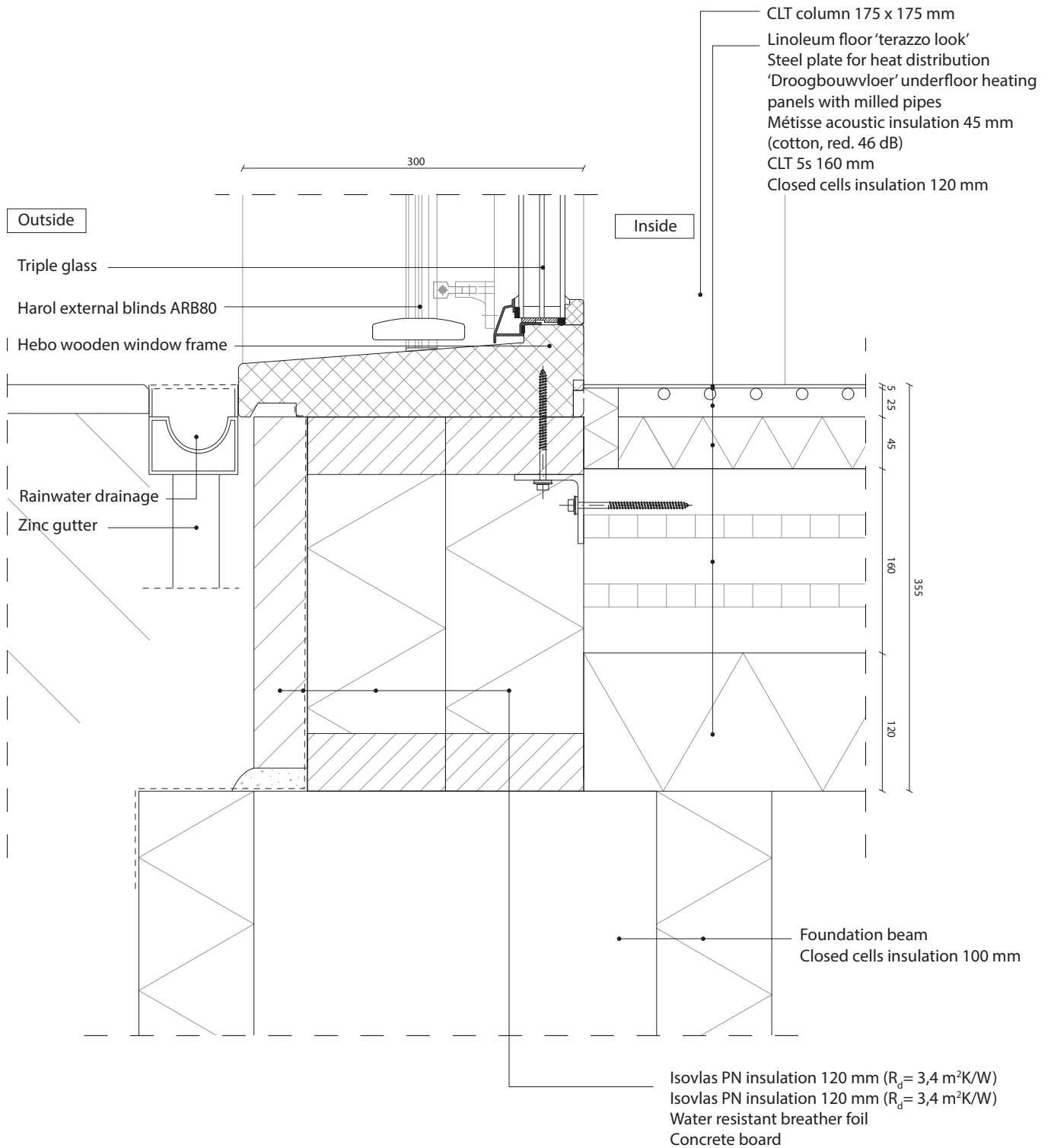


Details

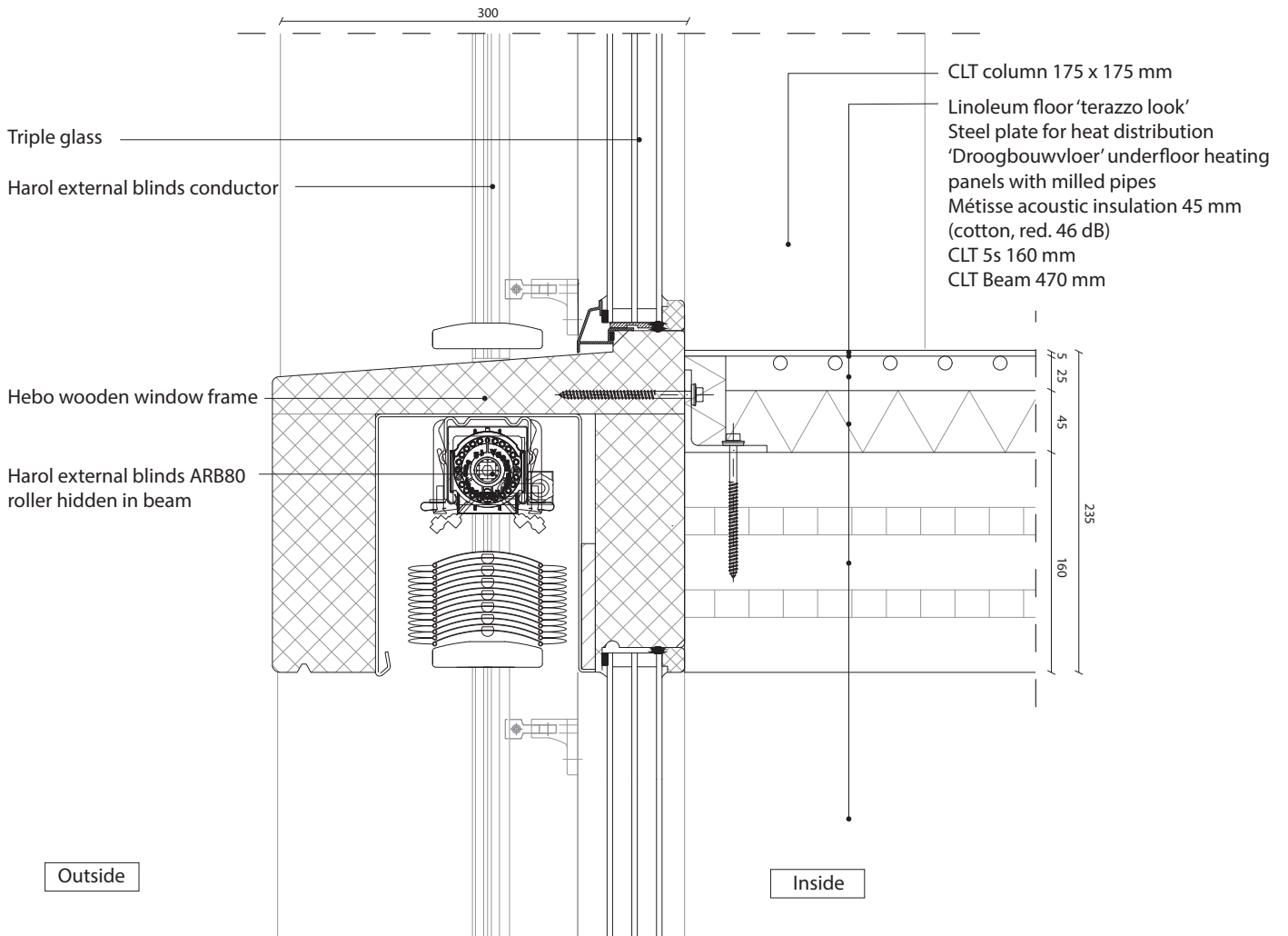
Scale 1:5



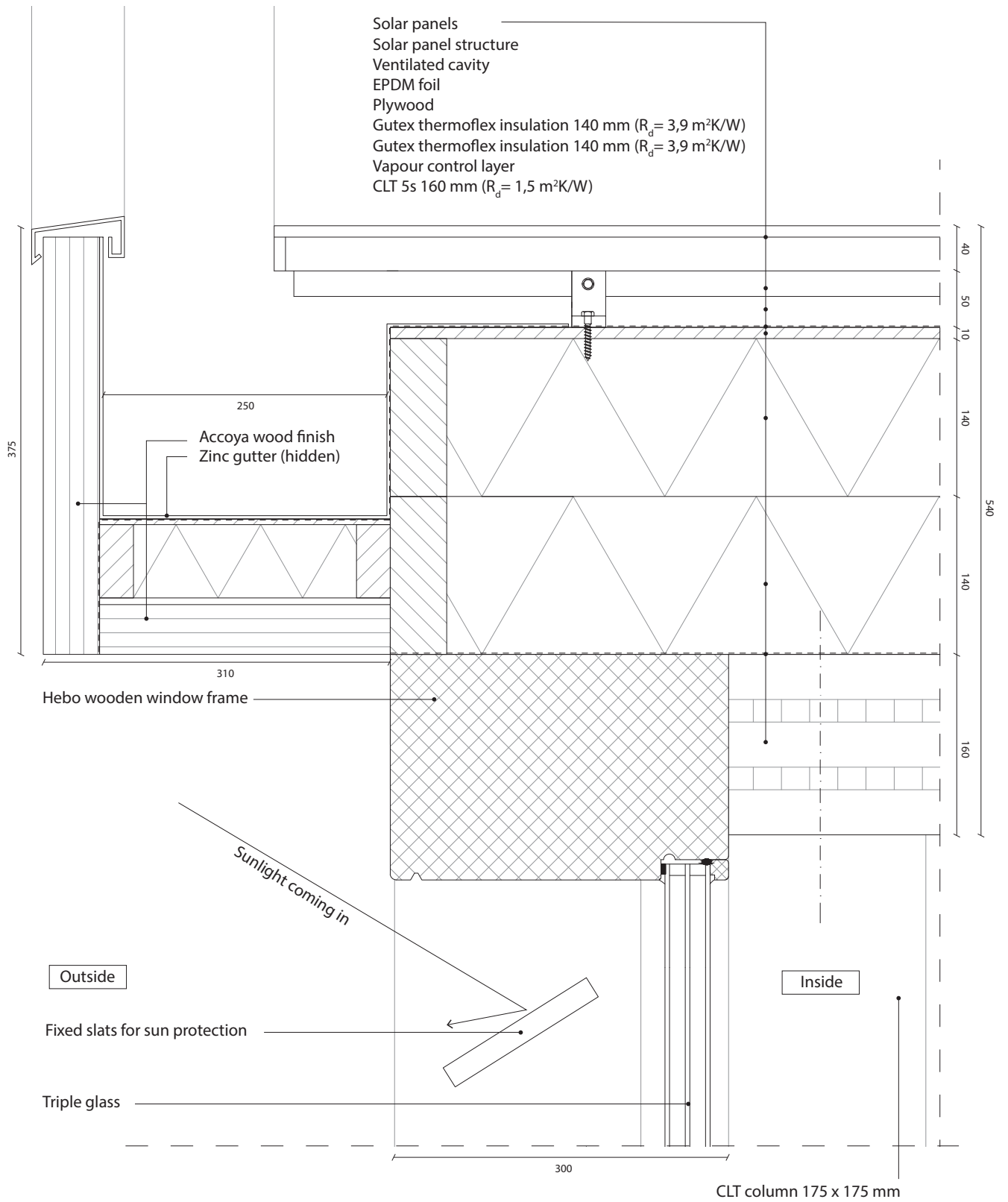
Detail 1



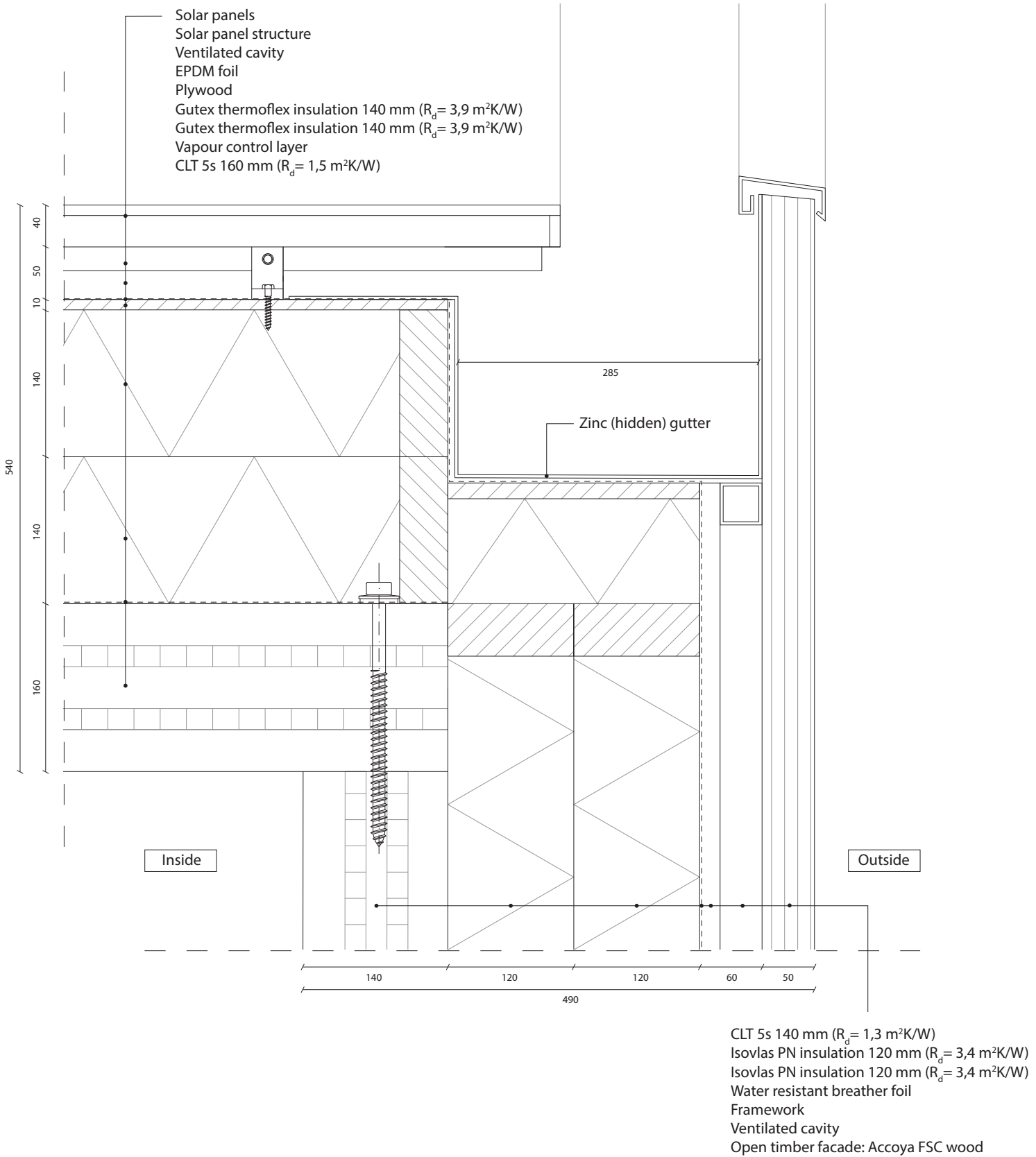
Detail 2



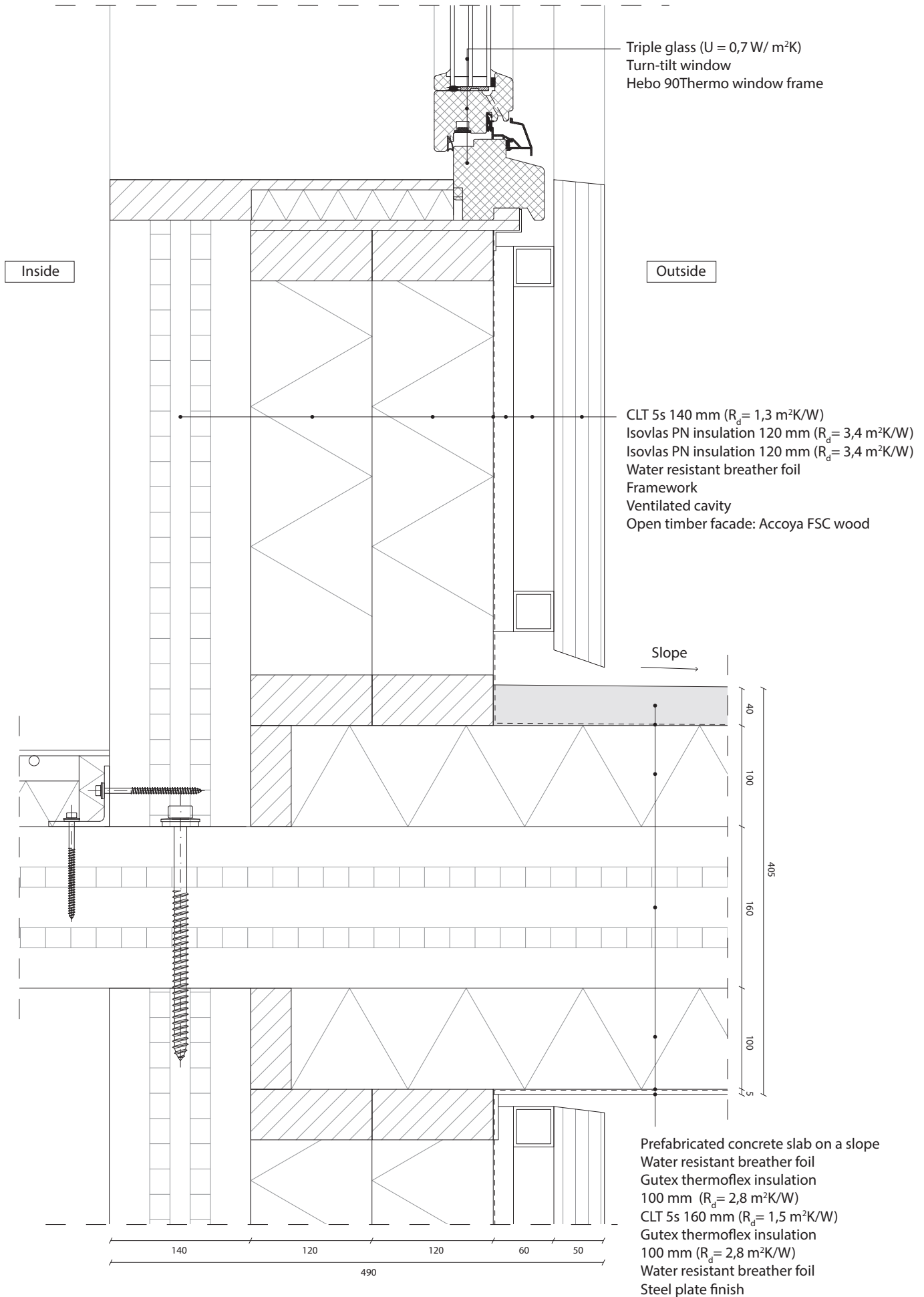
Detail 3



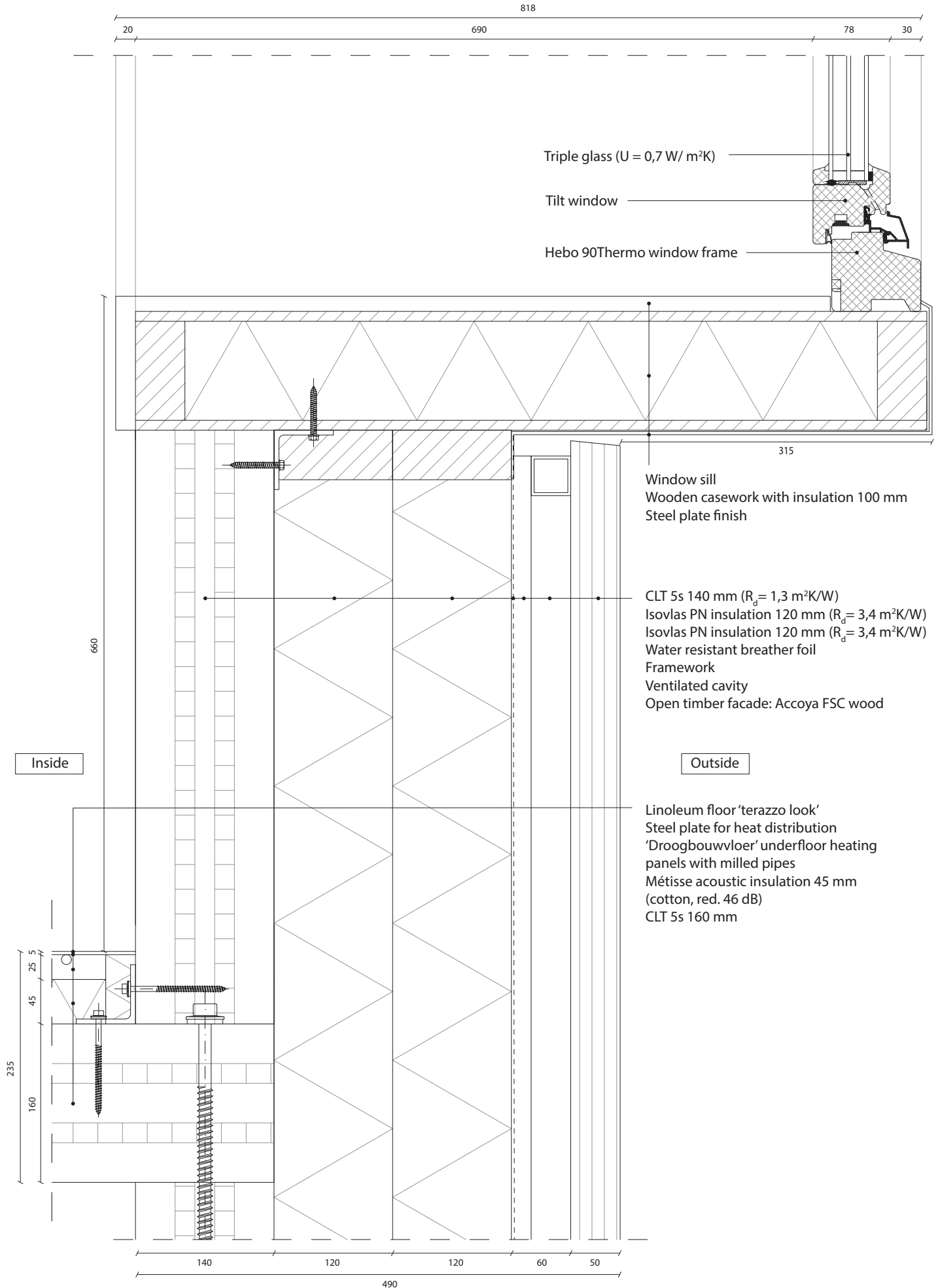
Detail 4



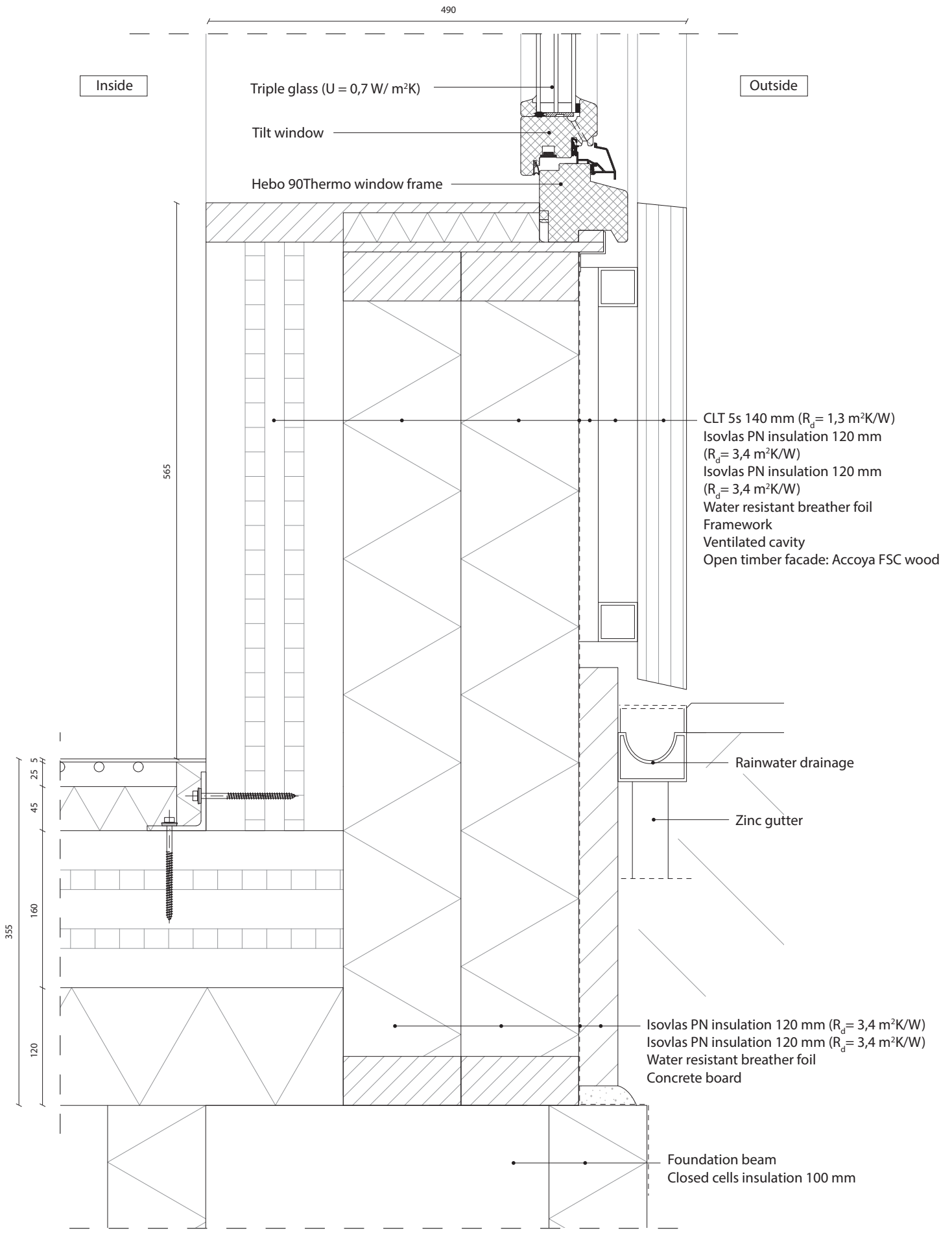
Detail 5



Detail 6

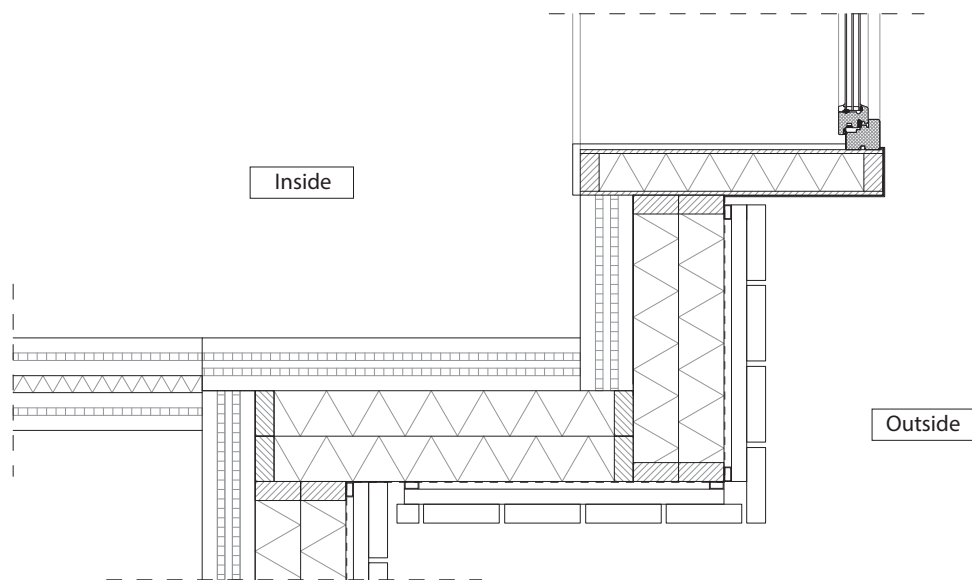


Detail 7

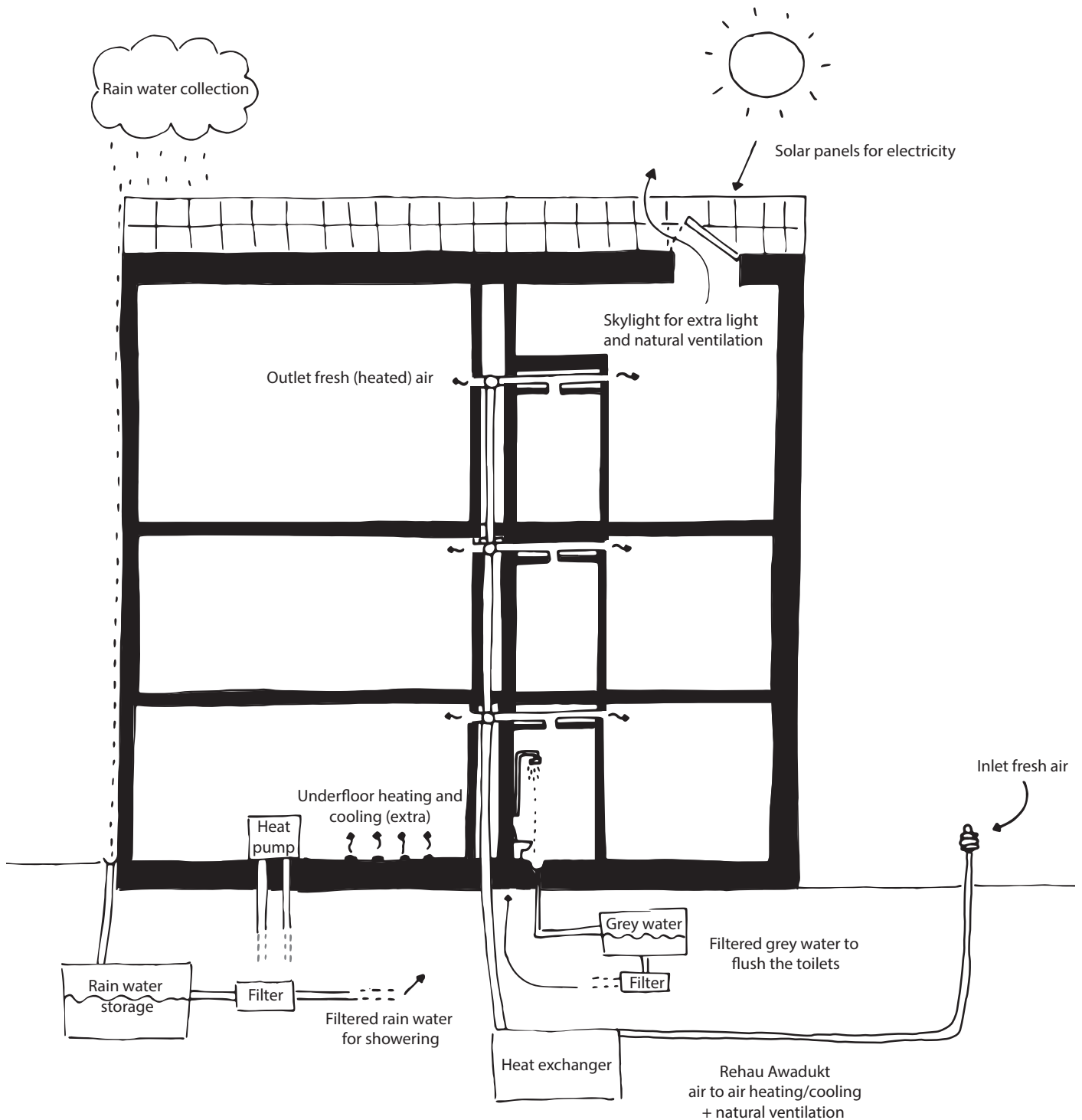


Detail 8

Scale 1:20

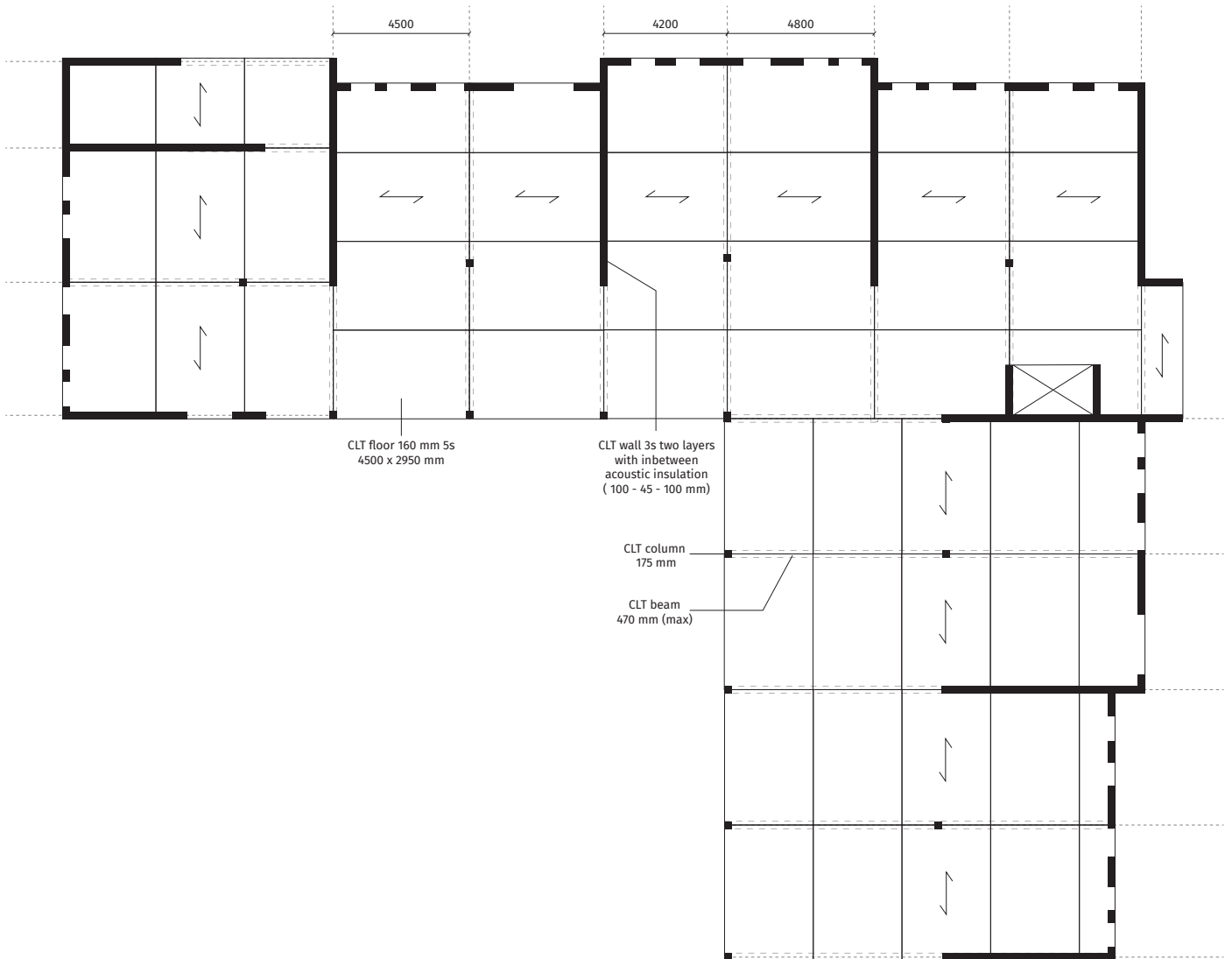


Climate and installations

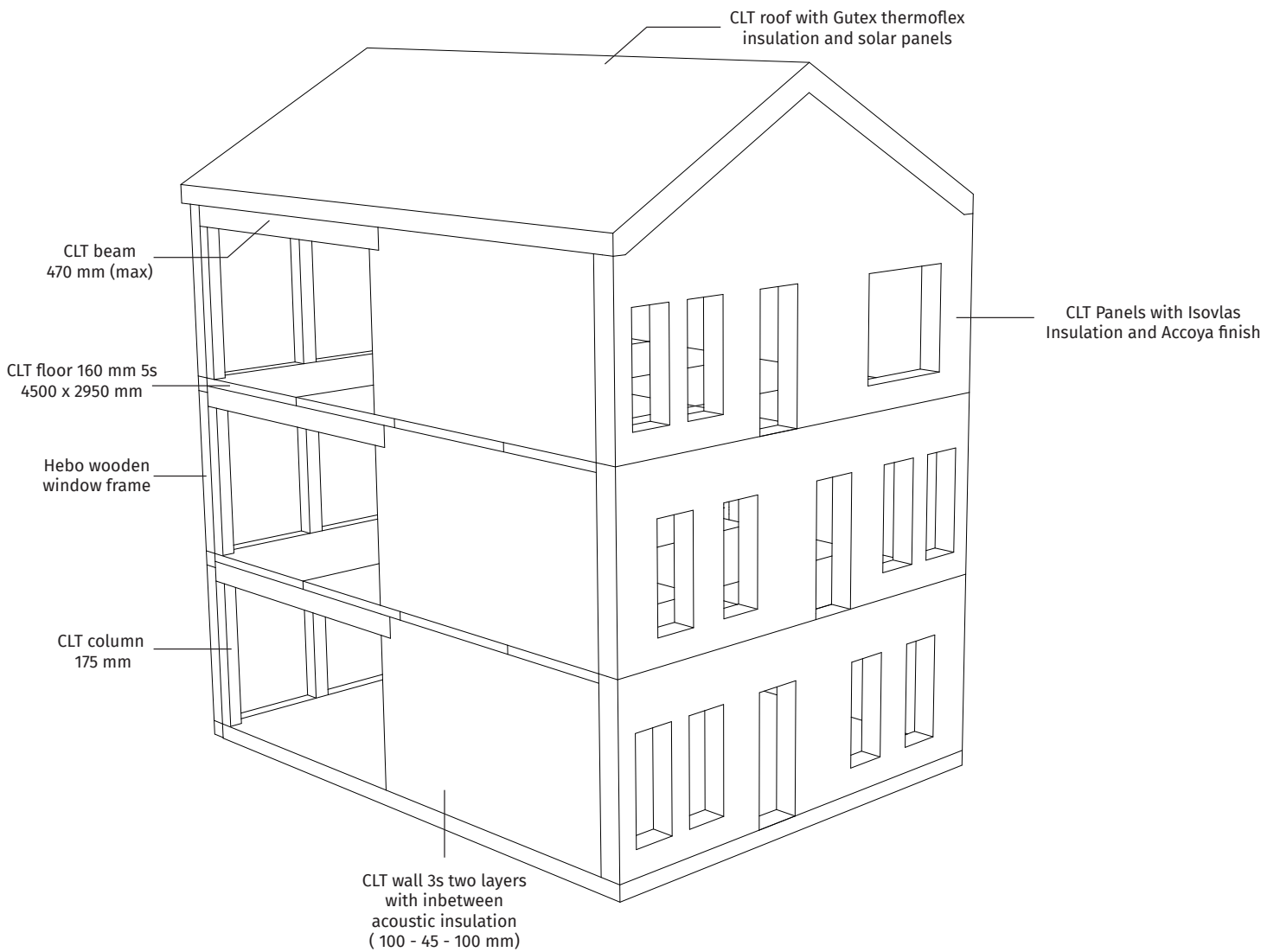


Construction

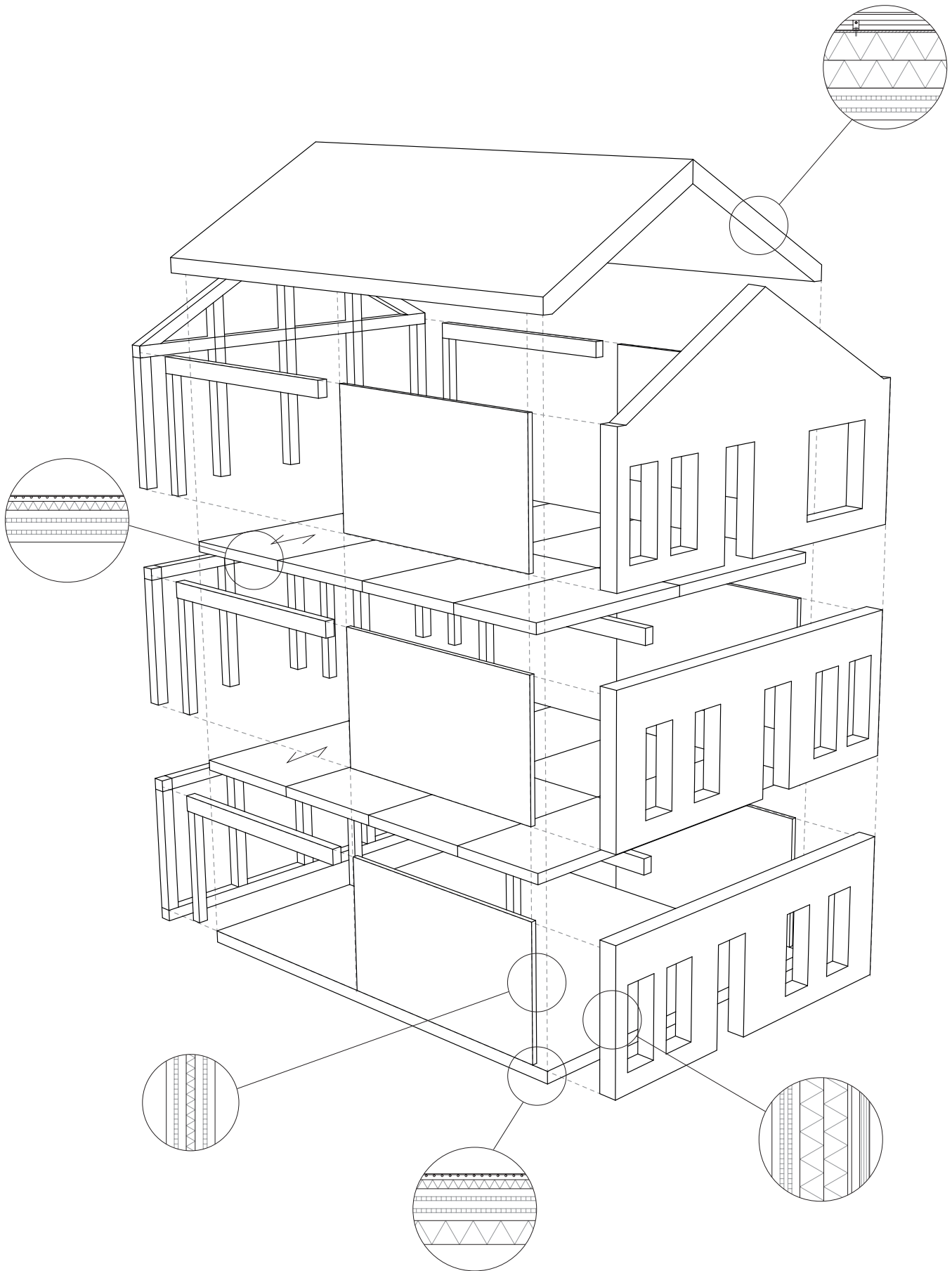
Structure in floorplan



Structure

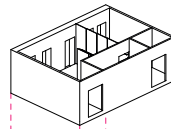


Structure

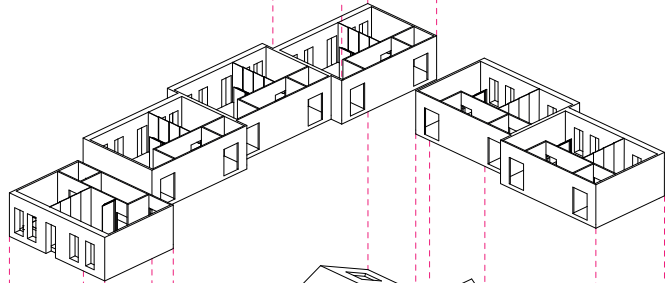


The Plan

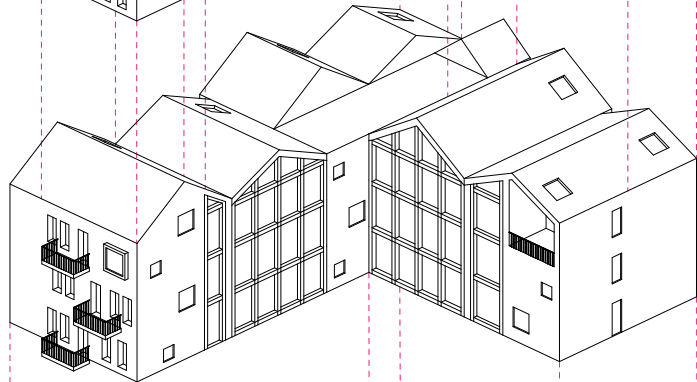
The flexible private unit



The private units connected



The collective living



The public master plan

