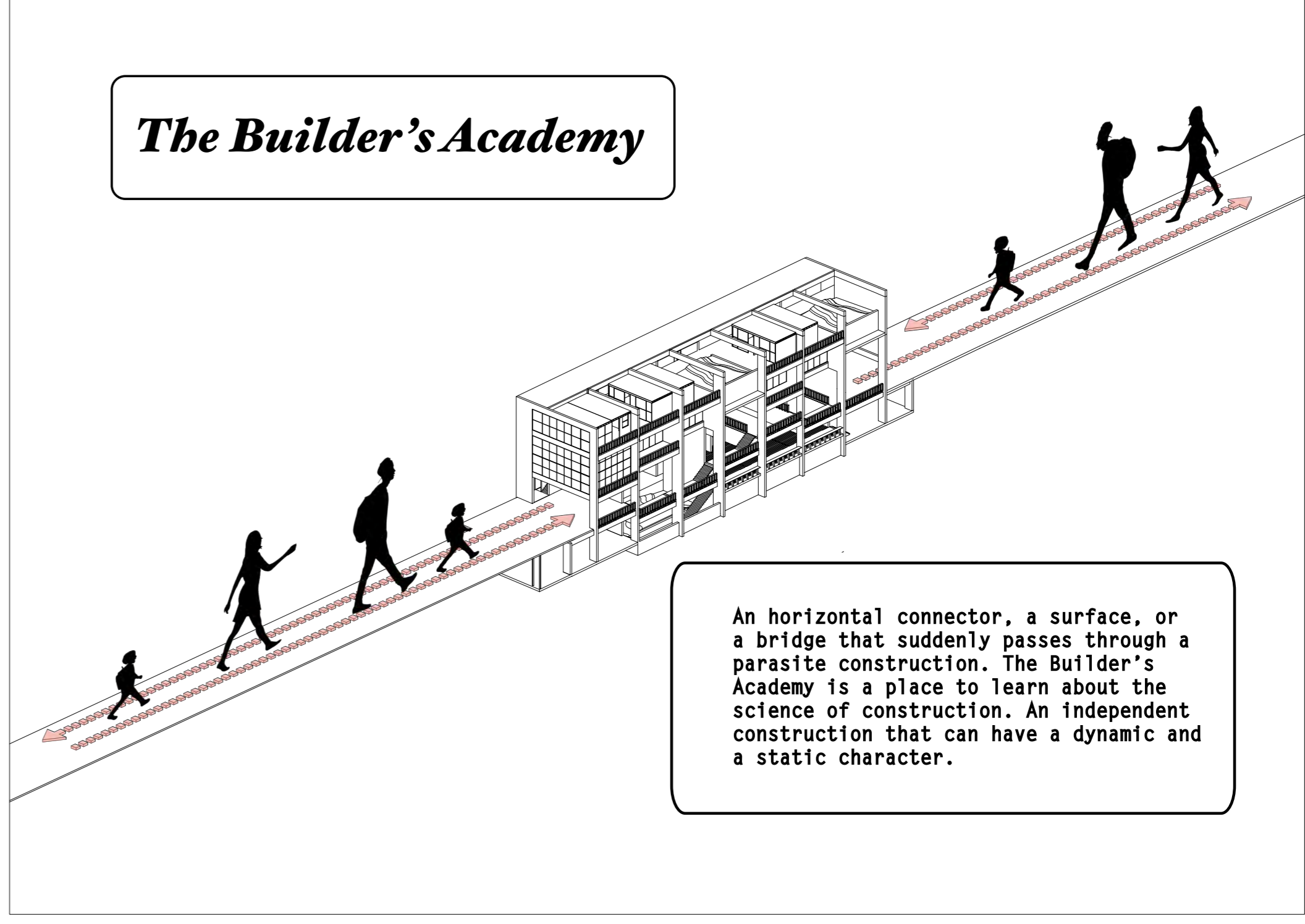


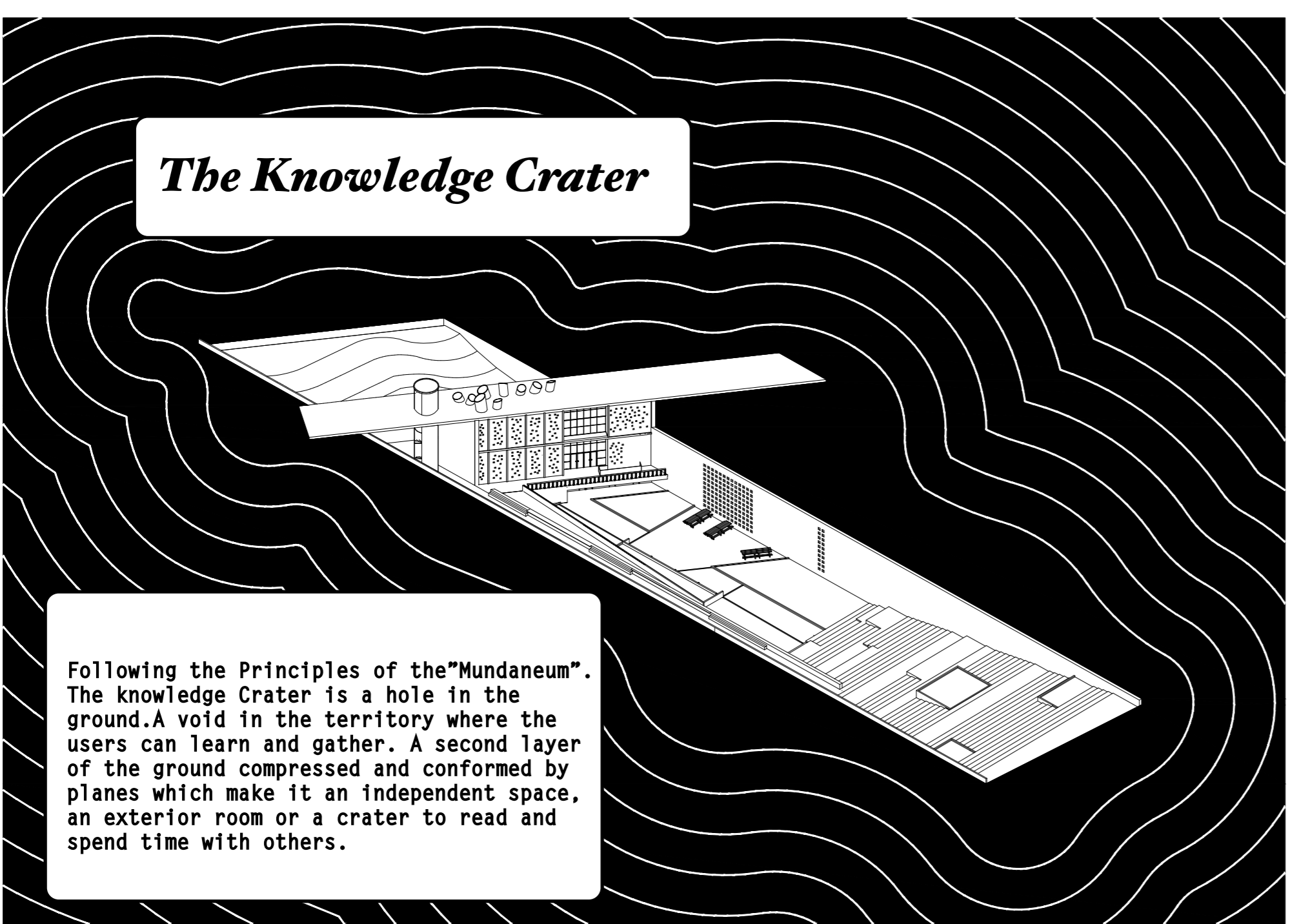
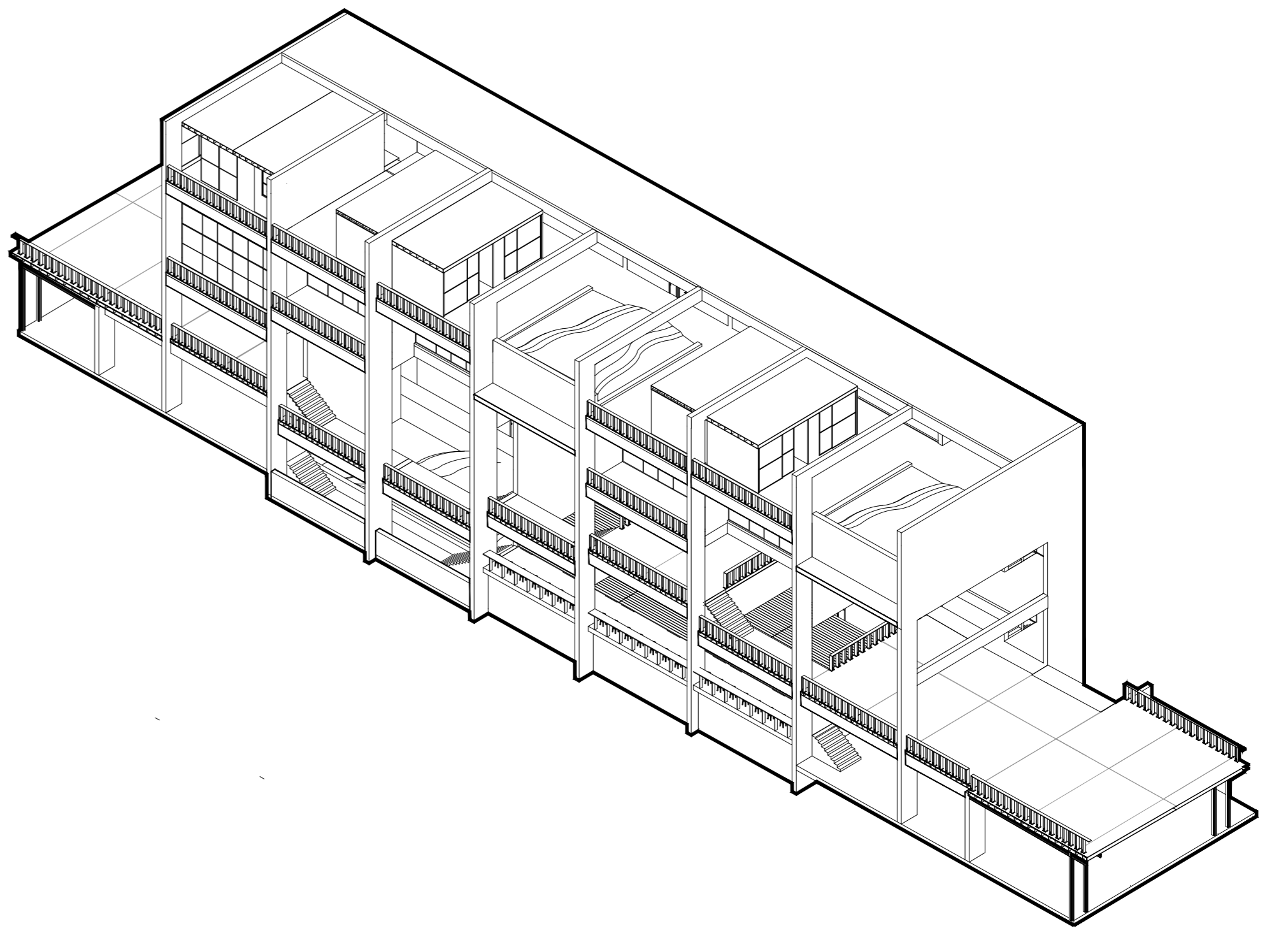
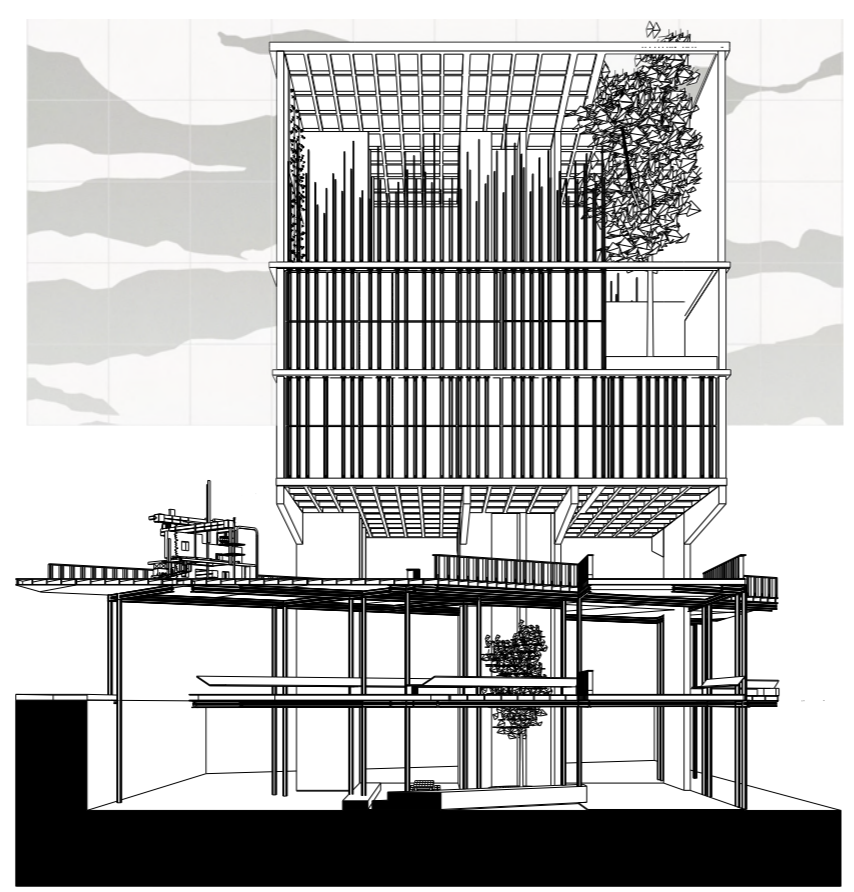
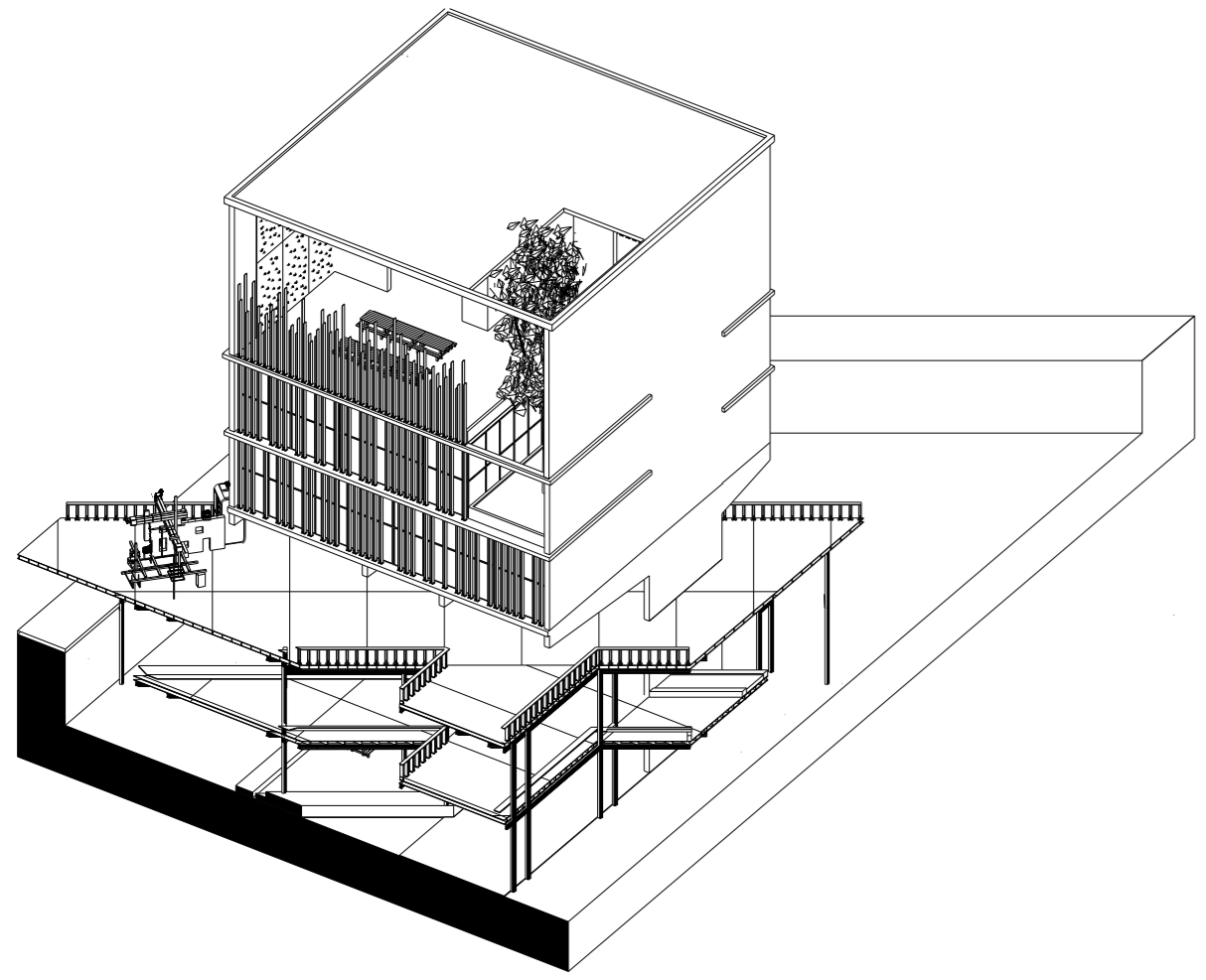
The TreeHouse Station

As it lifts itself from the ground, the tree house train station works as an element that creates morphological order between the axes of the project. It reinterprets the idea of vertical extension present in Tbilisi and is a place for a transitional occupation.



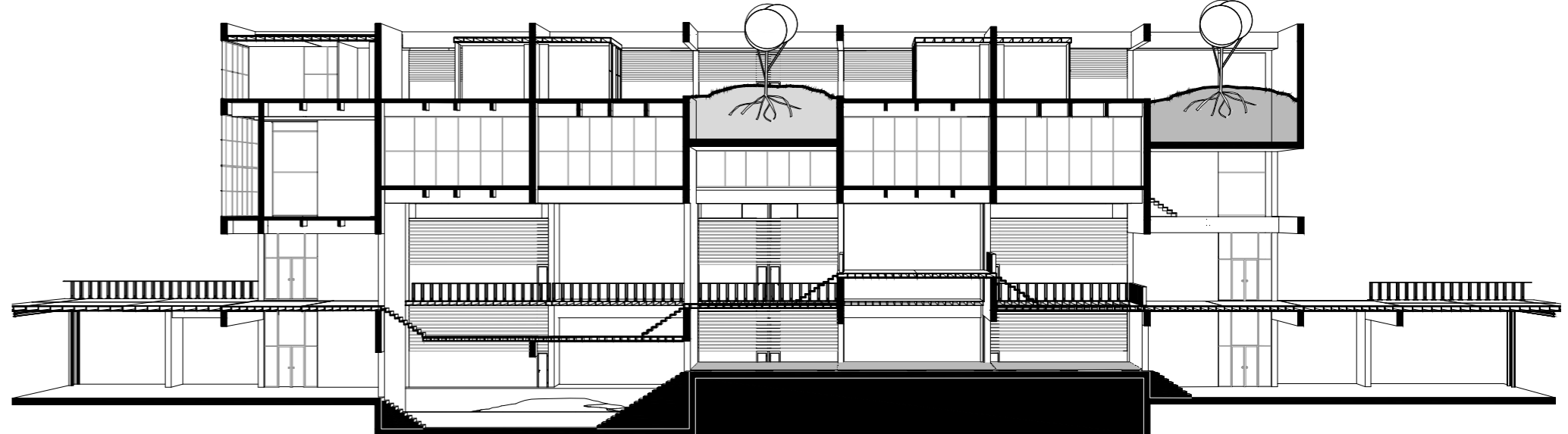
The Builder's Academy

An horizontal connector, a surface, or a bridge that suddenly passes through a parasite construction. The Builder's Academy is a place to learn about the science of construction. An independent construction that can have a dynamic and a static character.

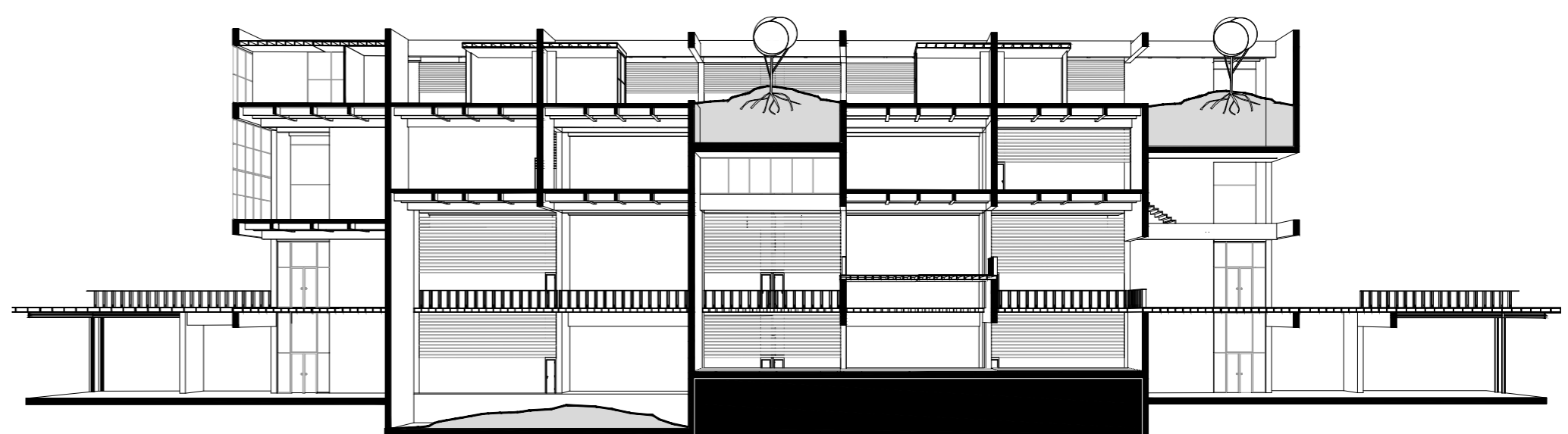


The Knowledge Crater

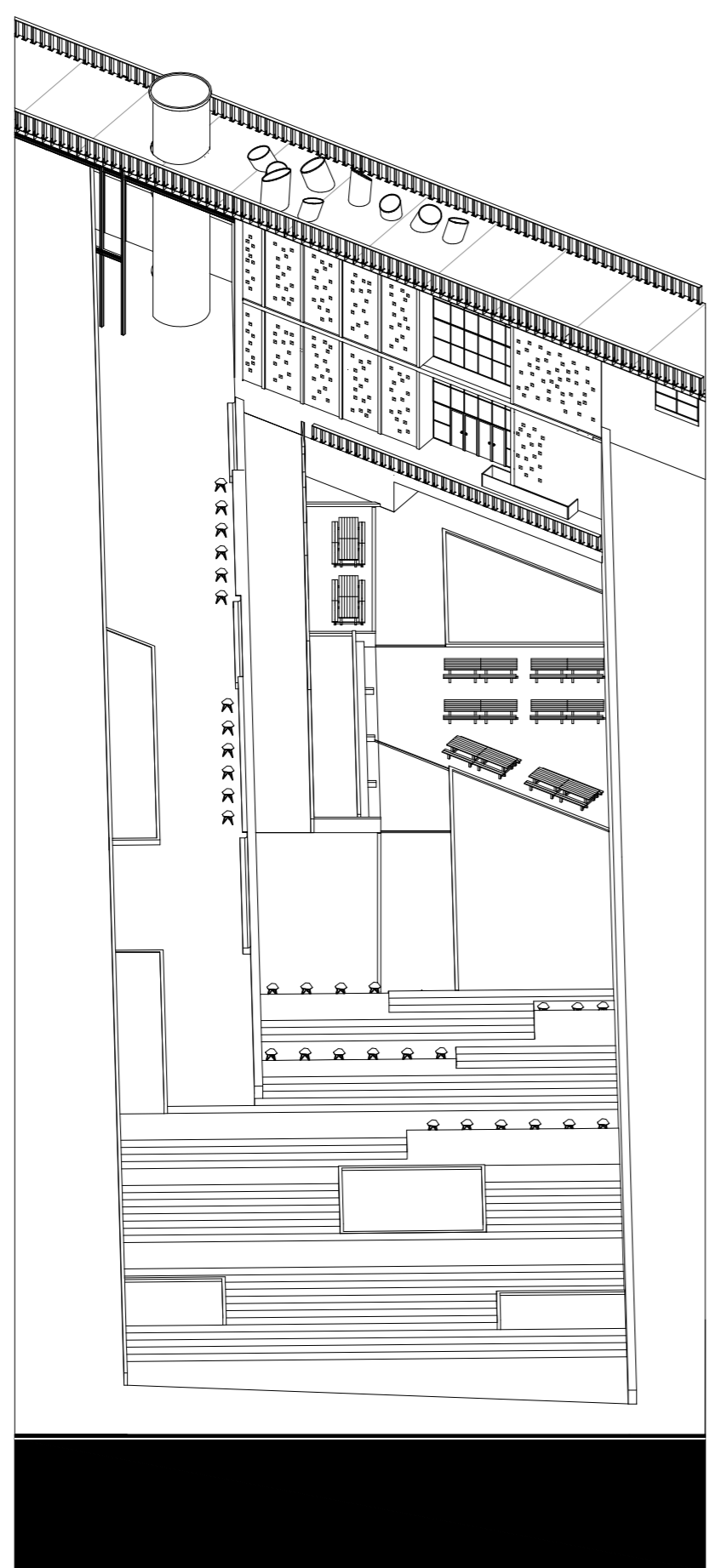
Following the Principles of the "Mundaneum". The Knowledge Crater is a hole in the ground. A void in the territory where the users can learn and gather. A second layer of the ground compressed and conformed by planes which make it an independent space, an exterior room or a crater to read and spend time with others.



SECTION A-A' 1:250



SECTION A-A' 1:250



ELEVATION 1:250