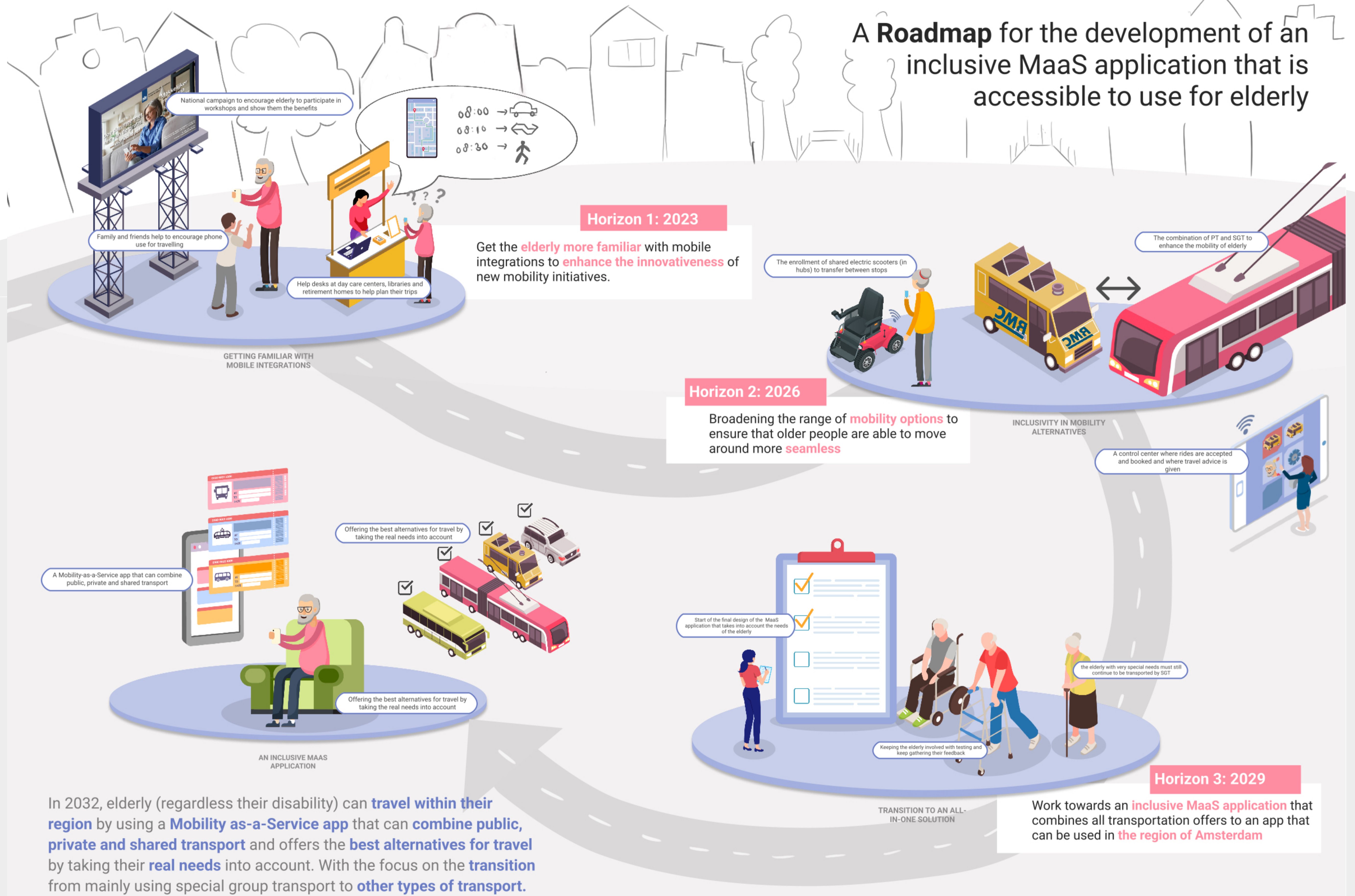


A Roadmap for the development of an inclusive MaaS application that is accessible to use for elderly



In 2032, elderly (regardless their disability) can **travel within their region** by using a **Mobility as-a-Service app** that can **combine public, private and shared transport** and offers the **best alternatives for travel** by taking their **real needs** into account. With the focus on the **transition** from mainly using special group transport to **other types of transport**.

Nina van Savooijen
Towards more inclusive mobility services
6th of October 2022
Strategic Product Design

Committee Dr. Ir. Suzanne Hiemstra-van Mastrigt
Ir. Matthijs Buijs
Company MSc. Mike van Hamersveld