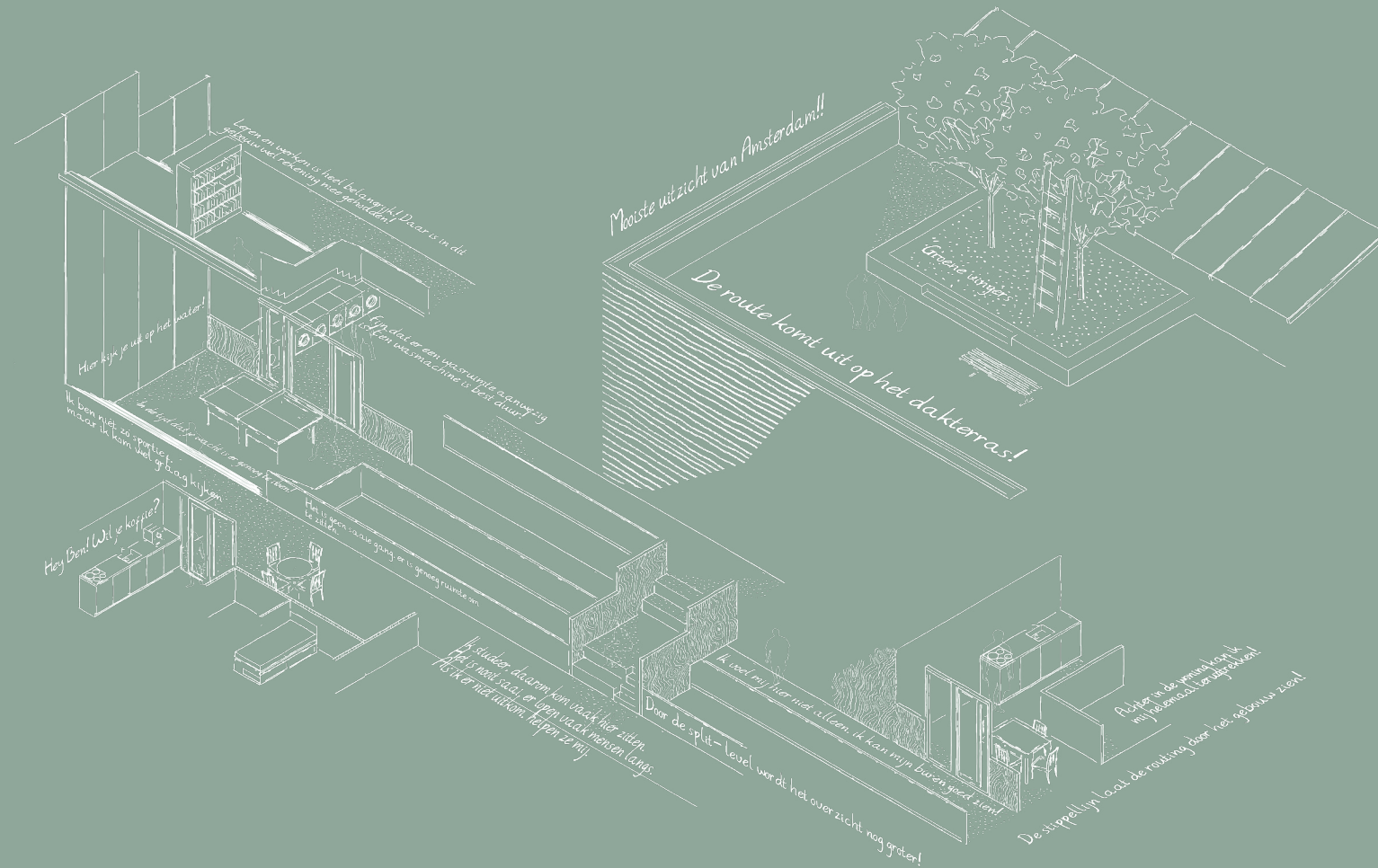


Inclusion by design.

"There is no place like home"



Research into a suitable form of housing and inclusion of vulnerable target groups in Amsterdam.

Karolis Dragunas

AGENDA

- Introduction
- Research:
 - *Problem statement*
 - *Research vulnerable target groups*
 - *Research inclusion*
 - *Research housing types for vulnerable groups*
 - *Research conclusions*
- Design concept:
 - *Spatial concepts*
 - *Spatial configuration*
- Design:
 - *Masterplan*
 - *Dwelling concept- connection to the inner public space*
 - *Floorplans*
 - *Construction and materialization*
 - *Building- connection to the public space*
 - *Elevations*

Introduction- personal motive

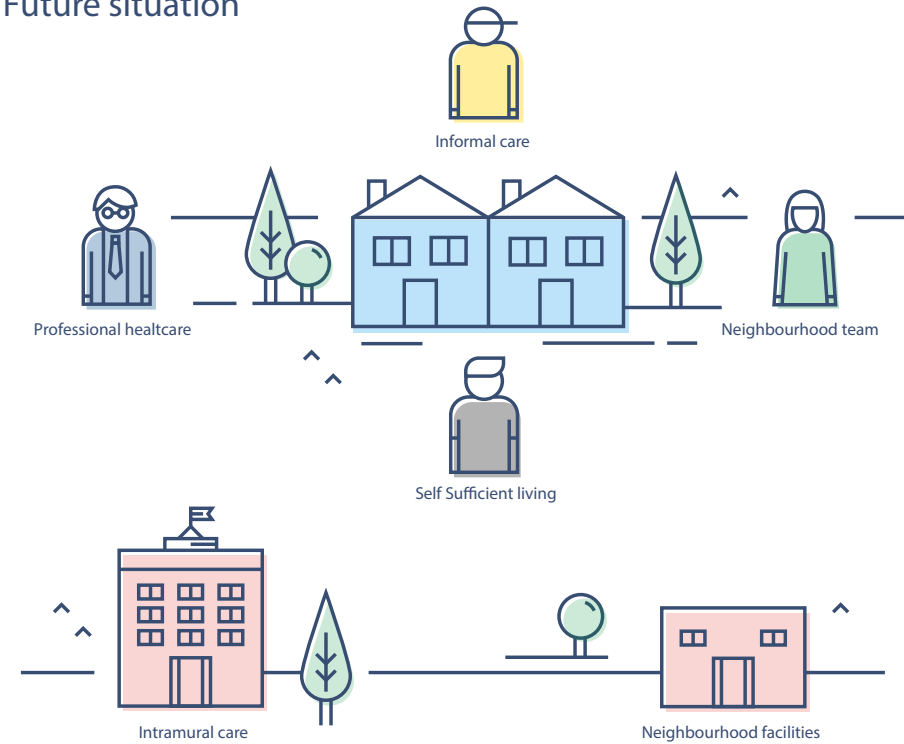
PROBLEM STATEMENT

- Participation society
- Reduction policy for intramural care
- Vulnerable groups are placed to live self-sufficient (60% of the new inflow).

Current state



Future situation



PROBLEM STATEMENT
PROGRAM 'HUISVESTING KWETSBARE DOELGROEPEN IN AMSTERDAM'

- 30% of the social housing stock is intended for
vulnerable groups



Versie
18 november 2015

Programma Huisvesting Kwetsbare Groepen 2016 – 2018

18 november 2015

Benodigde wooneenheden		
Benodigde wooneenheden kwetsbare groepen naar aantallen		Jaarlijks geprognoseerde aantallen wooneenheden voor 2016, 2017 en 2018
Volwassenen	Uitstroom MO ⁶	250
	Uitstroom BW	100
Jongeren	Uitstroom (zwerf)jongeren	25
	Spoekjongeren	20
Gezinnen	MO gezinnen	100
	(O)MPG	25
	Jeugdzorg	22
	Pleegzorg	20
Sociaal medisch urgenten		450
Statushouders		1.500
Slachtoffers huiselijk geweld		50
Mantelzorgers		n.t.b.
Overige groepen	Uittredende sekswerkers	5
	LVBers	100
	Rolstoelgeïndiceerden	30
Totaal jaarlijks		2.697
Marge 10% (afgerond)		+ 270
Regulier nodig jaarlijks		2.967

Tabel 2. Omvang huisvestingsvraag kwetsbare groepen (wooneenheden)

	2016	2017	2018
Regulier nodig per jaar	2.967	2.967	2.967
Extra opgave: 1.000 woningen voor omslag MO/BW	+ 300	+ 300	+ 400
Totaal jaarlijks benodigde wooneenheden	3.267	3.267	3.367
Totaal aantal wooneenheden 2016 – 2018 (afgerond)			9.900

PROBLEM STATEMENT
NOT IN MY BACKYARD



Figure: Folio Weekly Magazine (2017, March 15). Not in My BACKYARD [Photograph]. Retrieved from (02-07-2019), <http://folioweekly.com/not-in-my-backyard,17165>

PROBLEM STATEMENT
RESEARCH QUESTION

- How do I design a building in which vulnerable target groups can live self-sufficiently and take part in an inclusive community?

Research vulnerable groups

RESEARCH TARGET GROUPS

- *Uitstroom uit de Maatschappelijke Opvang*
- *Uitstroom uit Beschermd Wonen*

RESEARCH TARGET GROUPS



Homeless



No social network



No income



Variety of problems

RESEARCH TARGET GROUPS
BEN

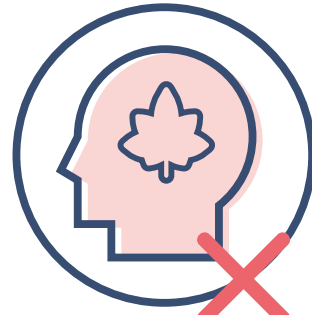


Figure: Petraeus, B. (2019, January 10). De schuur in de uiterwaarden waar Ben soms sliep op het stro, naast een vossenhol [Photograph]. Retrieved from (02-07-2019), <https://www.nrc.nl/nieuws/2019/01/10/voor-de-nieuwe-dakloze-is-maar-weinig-plek-a3408312>

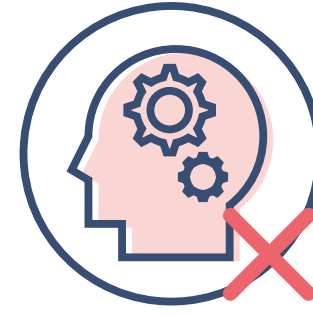
RESEARCH TARGET GROUPS



No criminal history



No addictions



No mental problems

Research inclusion

RESEARCH INCLUSION
REQUIREMENTS TO LIVE INDEPENDENTLY IN THE NEIGHBORHOOD



Affordable housing



Support



Social network



Daily activities

RESEARCH INCLUSION
PARTICIPATION



Work



Education



Support

RESEARCH INCLUSION
CREATING INTERPERSONAL RELATIONSHIPS



Meeting



Mutuality



Community

Research housing types for vulnerable groups

INCLUSION IN RELATION TO ARCHITECTURE

*Starters
and
students*

Mixture of

And

Contributes to

And



Volunurable



Non -volunurable



Support



Mutuality

INCLUSION IN RELATION TO ARCHITECTURE



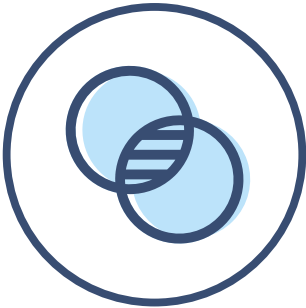
Figure: Van Bodegraven, F. (2017, July 09). Bewoners Roberta Fadda, Guido van Ingen, Rob van Leusen en Andre de Ruiter zitten met hond Djinta in de buurttuin. "Het is een huiskamer waar iedereen op uitkijkt." [Photograph]. Retrieved from (02-07-2019), <https://www.duic.nl/algemeen/vies-veldje-naar-fleurige-buurthuiskamer-vernieuwd-thomas-a-kempisplantsoen/>

Research conclusions

RESEARCH CONCLUSIONS
STARTING POINTS DESIGN



Meeting



Transparency



Activate



Social security

RESEARCH CONCLUSIONS

TRANSPARENCY

HOUSING ASSOCIATION PARANA- UTRECHT



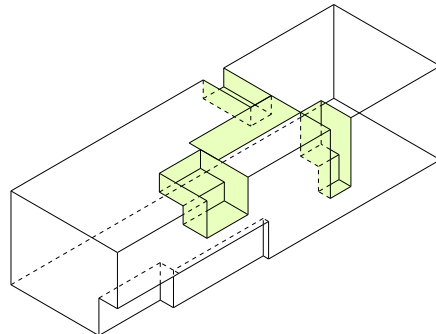
Figure: Heilijgers (n.d.). Woon-werkvoorziening Parana Utrecht [Photograph]. Retrieved from (02-07-2019), <https://www.heilijgers.nl/parana-utrecht/#>

CENTRE FOR SENIORS- STEINFELD

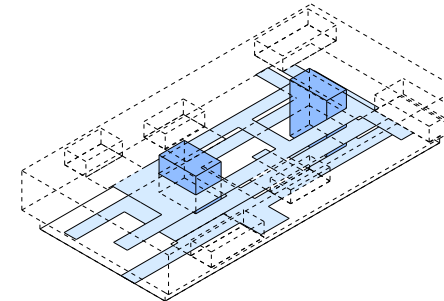


Figure: Dietger Wissounig Architekten (n.d.). Steinfeld Retirement and Nursing Home [Photograph]. Retrieved from (02-07-2019), <http://www.wissounig.com/projects/altenwohn-und-pflegeheim-steinfeld?lang=en>

MATERIAL TRANSPARENCY



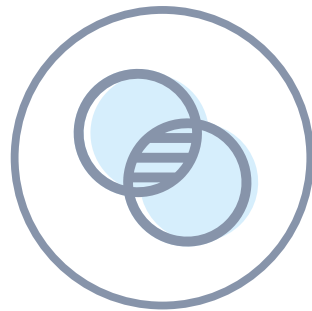
TRANSPARENT SPACE



RESEARCH CONCLUSIONS
STARTING POINTS DESIGN



Meeting



Transparency



Activate

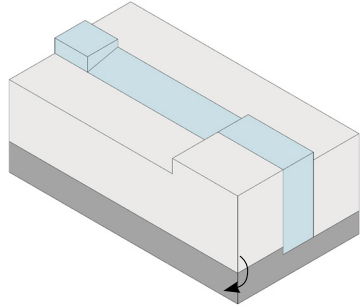


Social security

Design concept

SPATIAL CONCEPTS

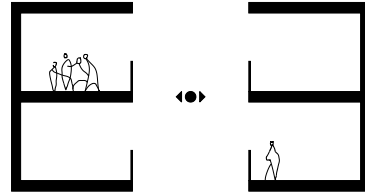
1 Combine living and working



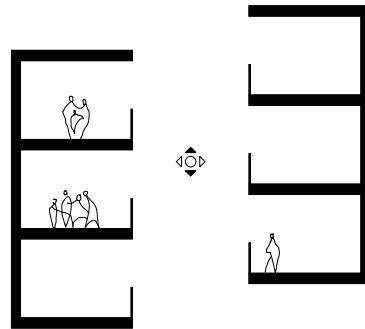
2 Implement social dimensions



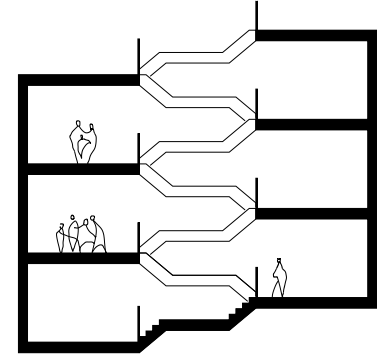
3 Add a third dimension



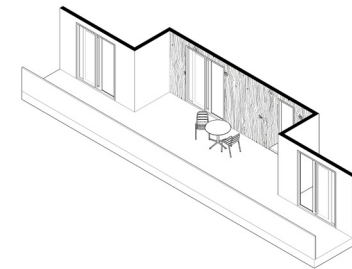
4 Increase transparency



5 Activate the space by adding a route



6 Create space to rest and meet



SPATIAL CONCEPT

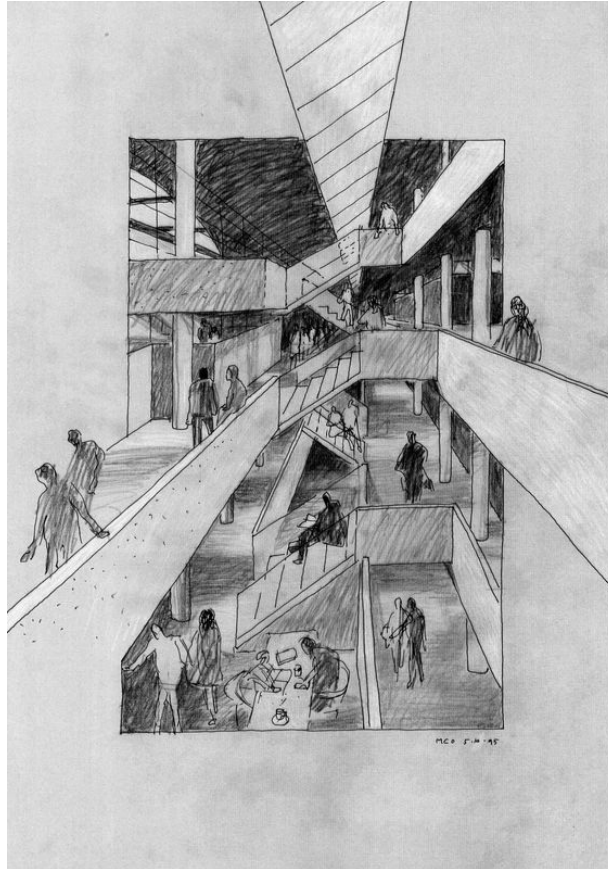
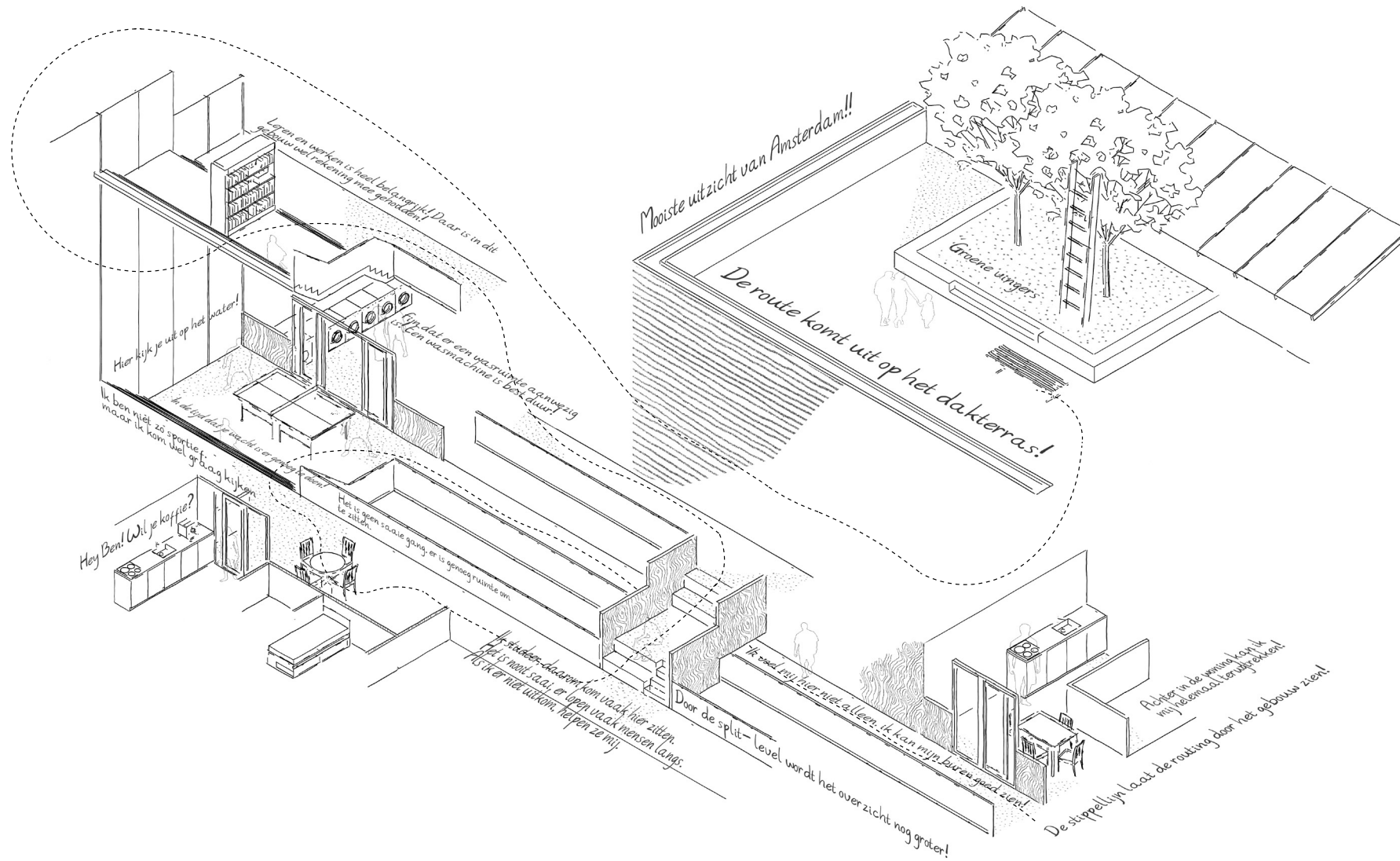


Figure: AHH (n.d.). Montessori College Oost [Illustration]. Retrieved from (02-07-2019), <https://www.ahh.nl/index.php/nl/projecten2/9-onderwijs/55-montessori-college-oost-amsterdam>

SPATIAL CONFIGURATION



Masterplan

INTRODUCTION MINERVAHAVEN
HAVEN- STAD

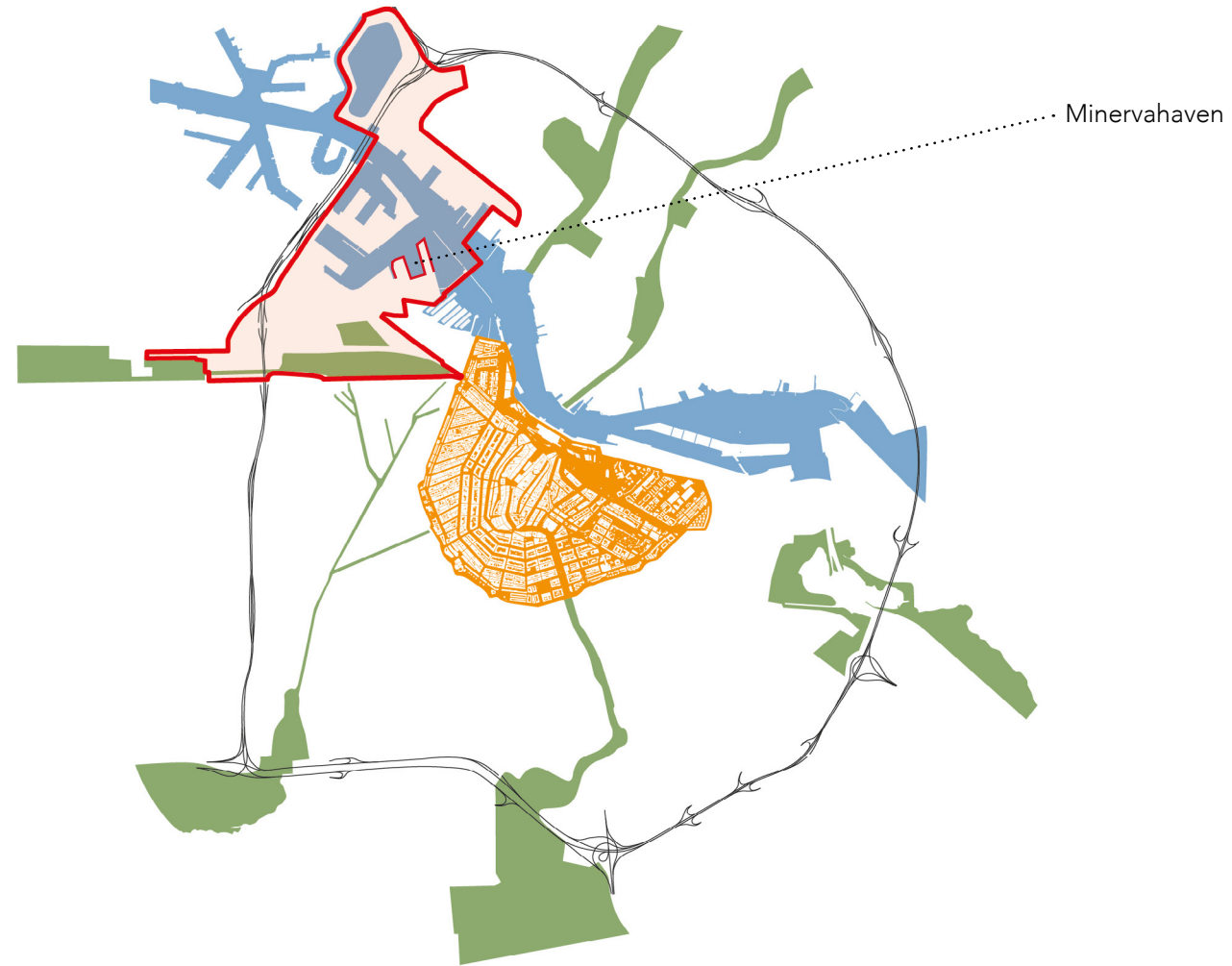


Figure: Gemeente Amsterdam. (n.d.). Gebied_haven-stad [Illustration]. Retrieved from (02-07-2019), <https://www.amsterdam.nl/projecten/haven-stad/>

INTRODUCTION MINERVAHAVEN
FORMER PORT AREA



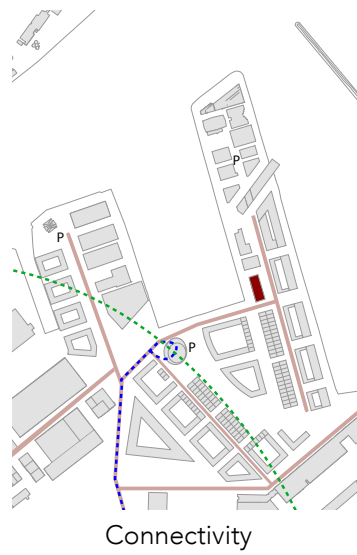
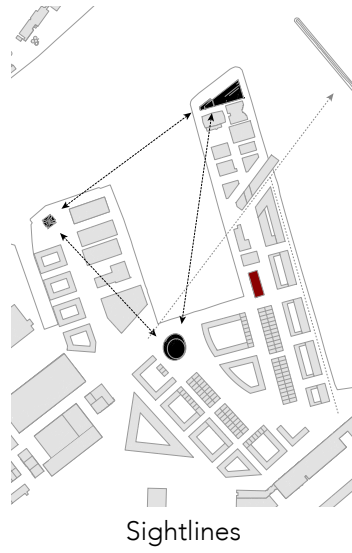
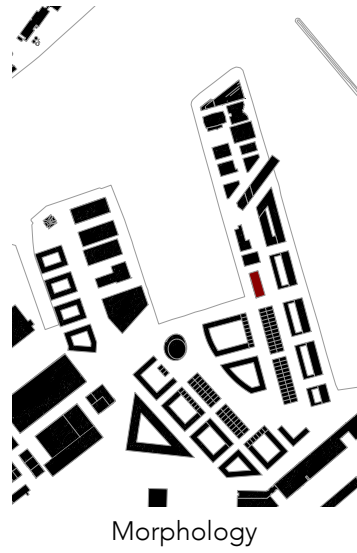
Figure: Stadsarchief Amsterdam. (1924). Luchtfoto van de Rigakade gezien in noordelijke richting naar de Nieuwe Houthaven [Photograph]. Retrieved from (17-04-2019), https://beeldbank.amsterdam.nl/beeldbank/weergave/record/layout/indeling/gallery/sortering/sk_sort_geografische_naam_ASC?f_sk_geografische_naam=Rigakade&id=A04139000185

INTRODUCTION MINERVAHAVEN
FORMER PORT AREA

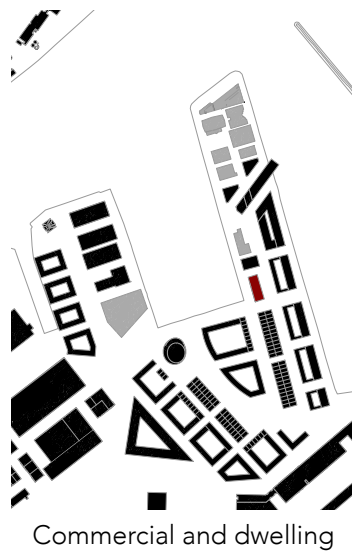


Figure: Schlijper, T. (2019, April 11). The Netherlands, Amsterdam, Mercuriushaven, Danzigerkade [Photograph]. Retrieved from (02-07-2019), <https://schlijper.nl/190411-mg-0054-pano-amsterdam-mercuriushaven-danzigerkade.photo>

MASTERPLAN
"THE ACTIVE HARBOR"



- Car access
- Metro
- HUB



- Dwelling
- Non dwelling

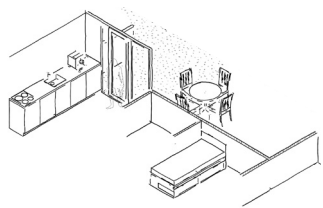
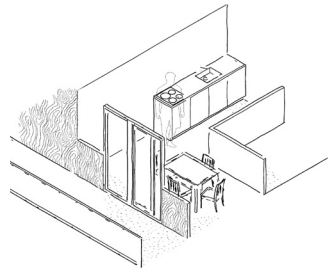


Dwelling design

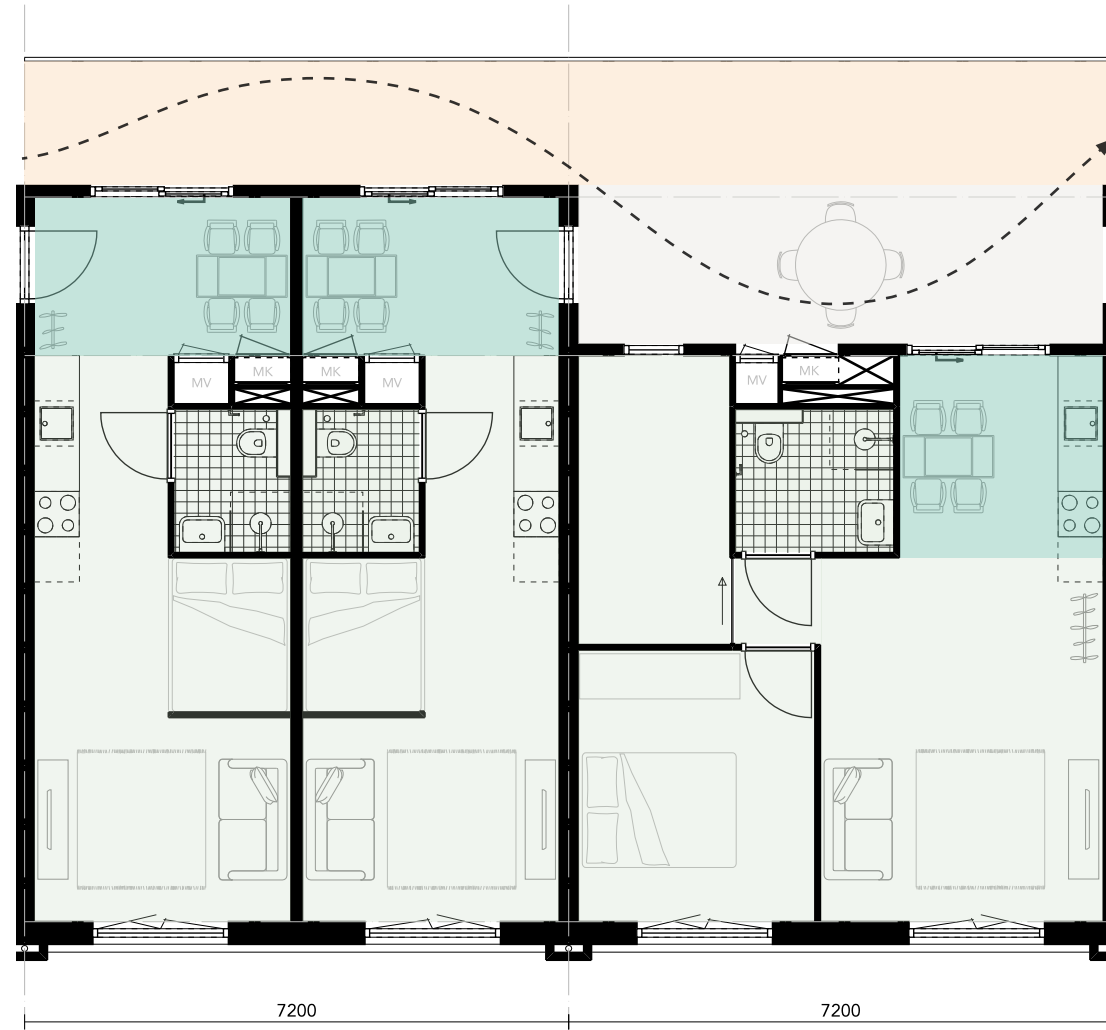
IMPRESSION OF THE INTERIOR SPACE



DWELLING CONCEPT



Connection with the public inner space



- Access route
- Common area
- Connection to the public space
- Private space

THE STORY BEHIND THE FRONT DOOR
A LOOK INTO THE INTERIORS OF VULNERABLE TARGET GROUPS

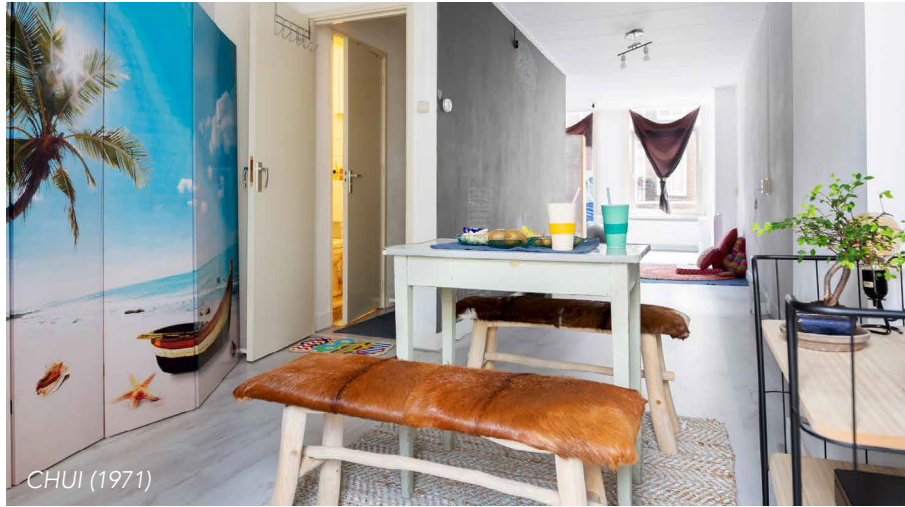
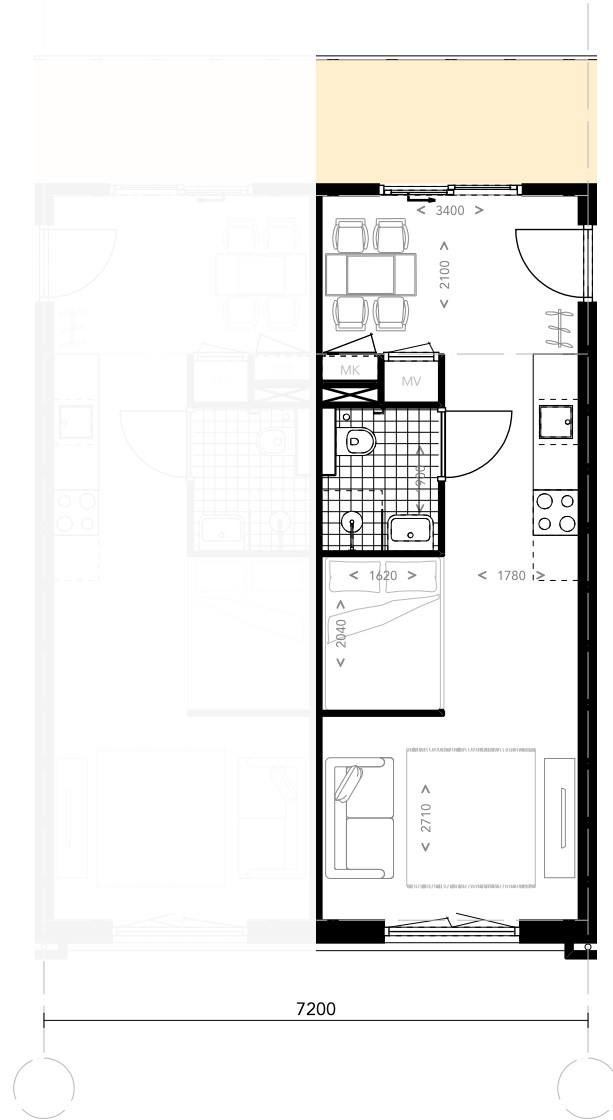
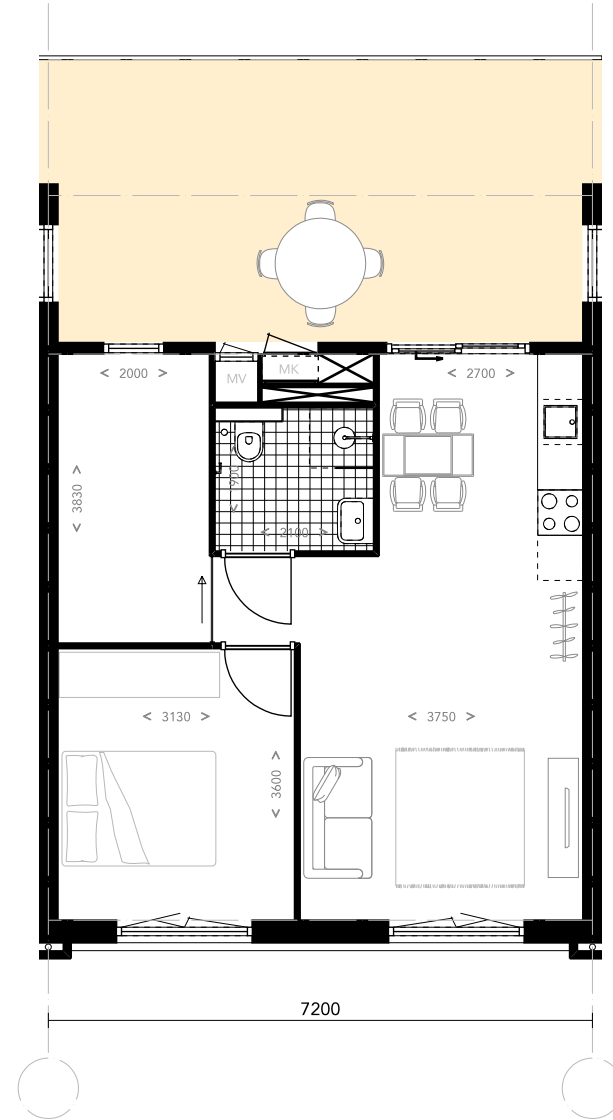


Figure: Kaptein, J. (2018). Thuis [Photograph]. Retrieved from (02-07-2019), <https://hvoquerido.nl/wp-content/uploads/2018/10/Thuis-Boek-Housing-First.pdf>

DWELLING LAYOUT
STUDIO- 30 M² AND APARTMENT- 50 M²

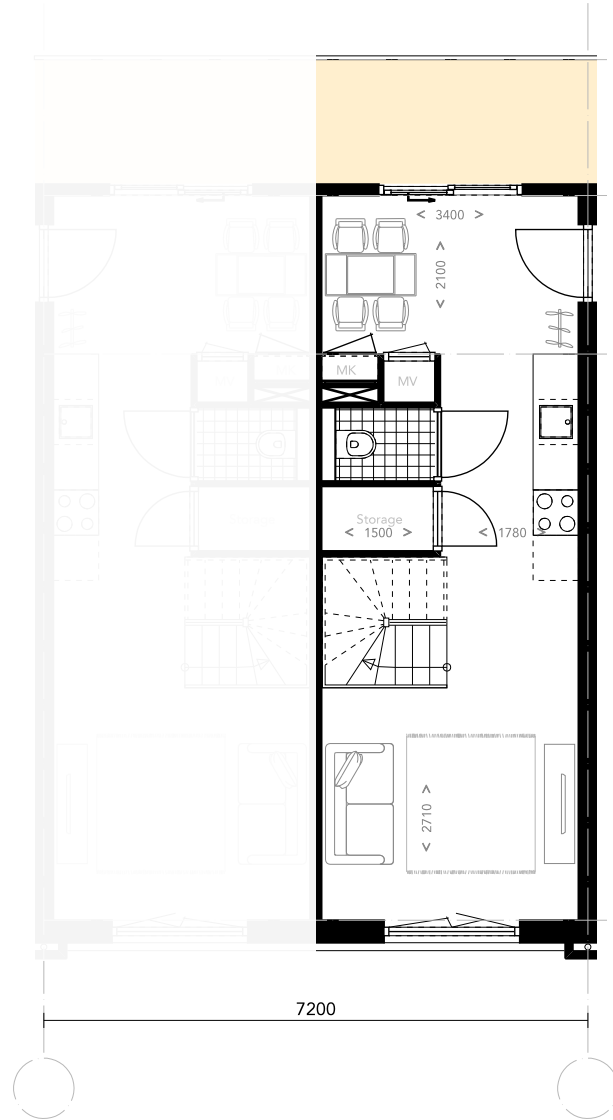


30 m² studio

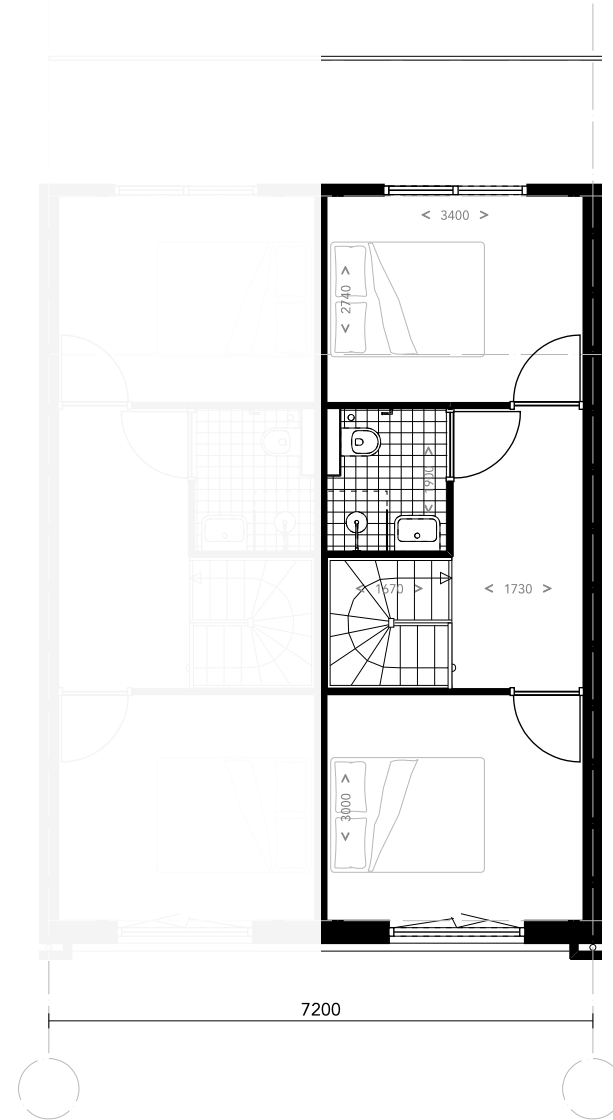


50 m² studio

DWELLING LAYOUT
MAISONETTE- 60 M²

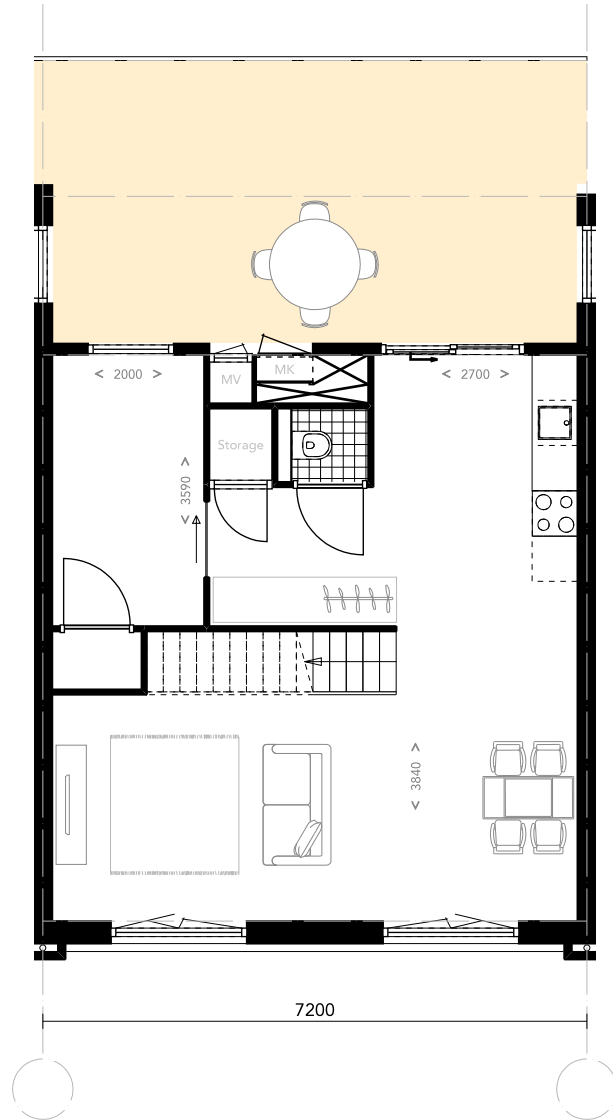


Ground floor

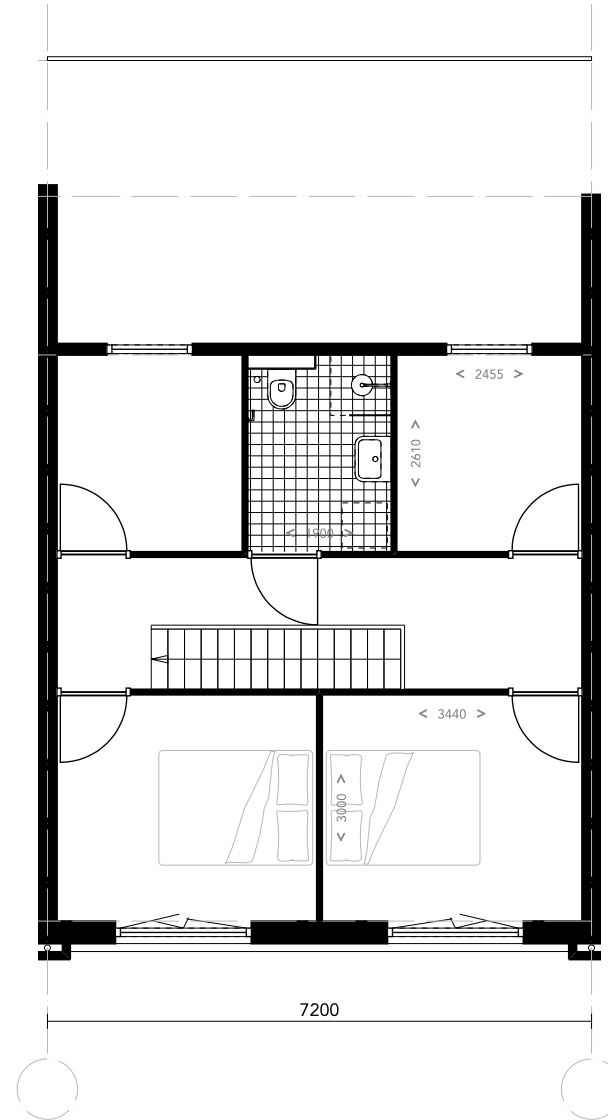


First floor

DWELLING LAYOUT
MAISONETTE- 100 M²

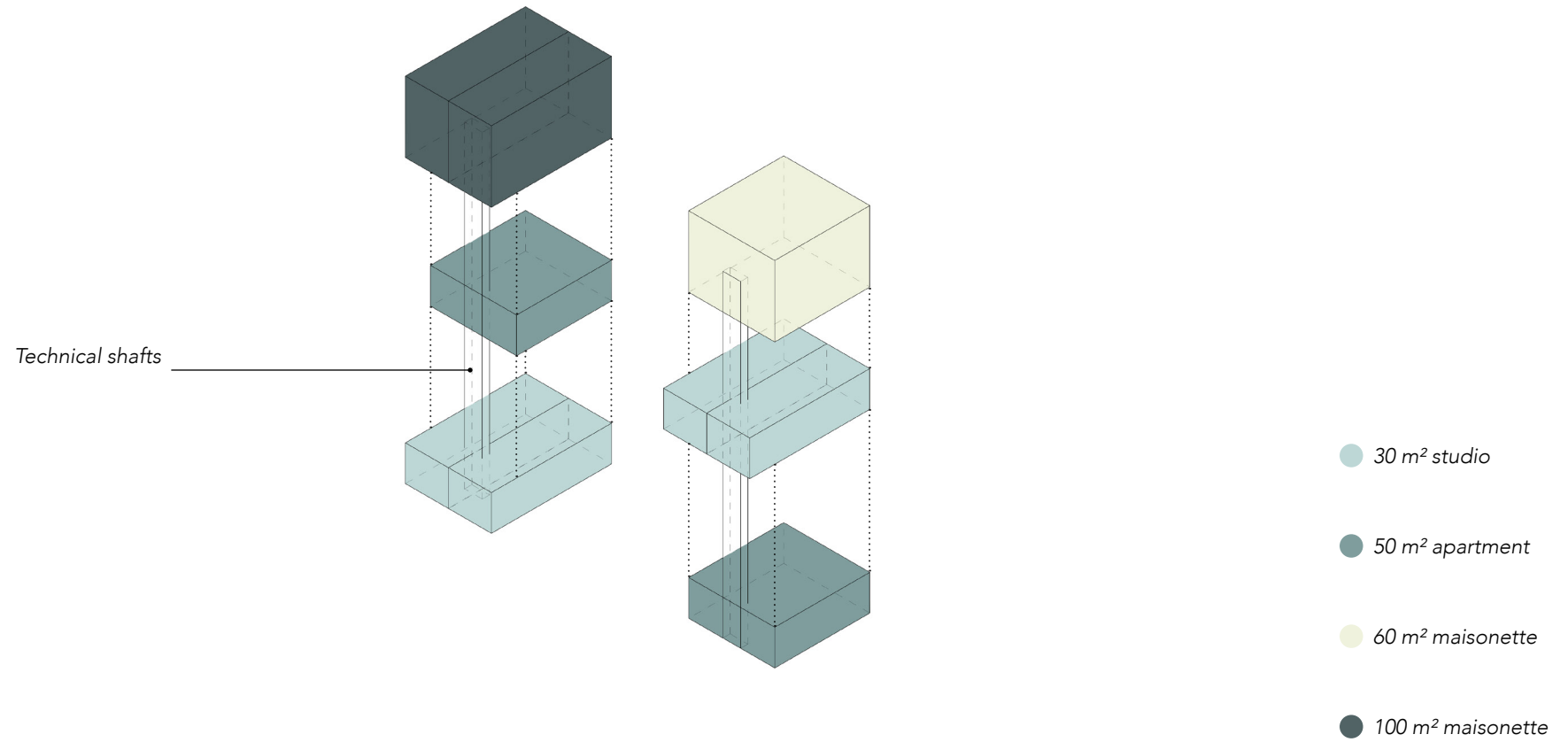


Ground floor

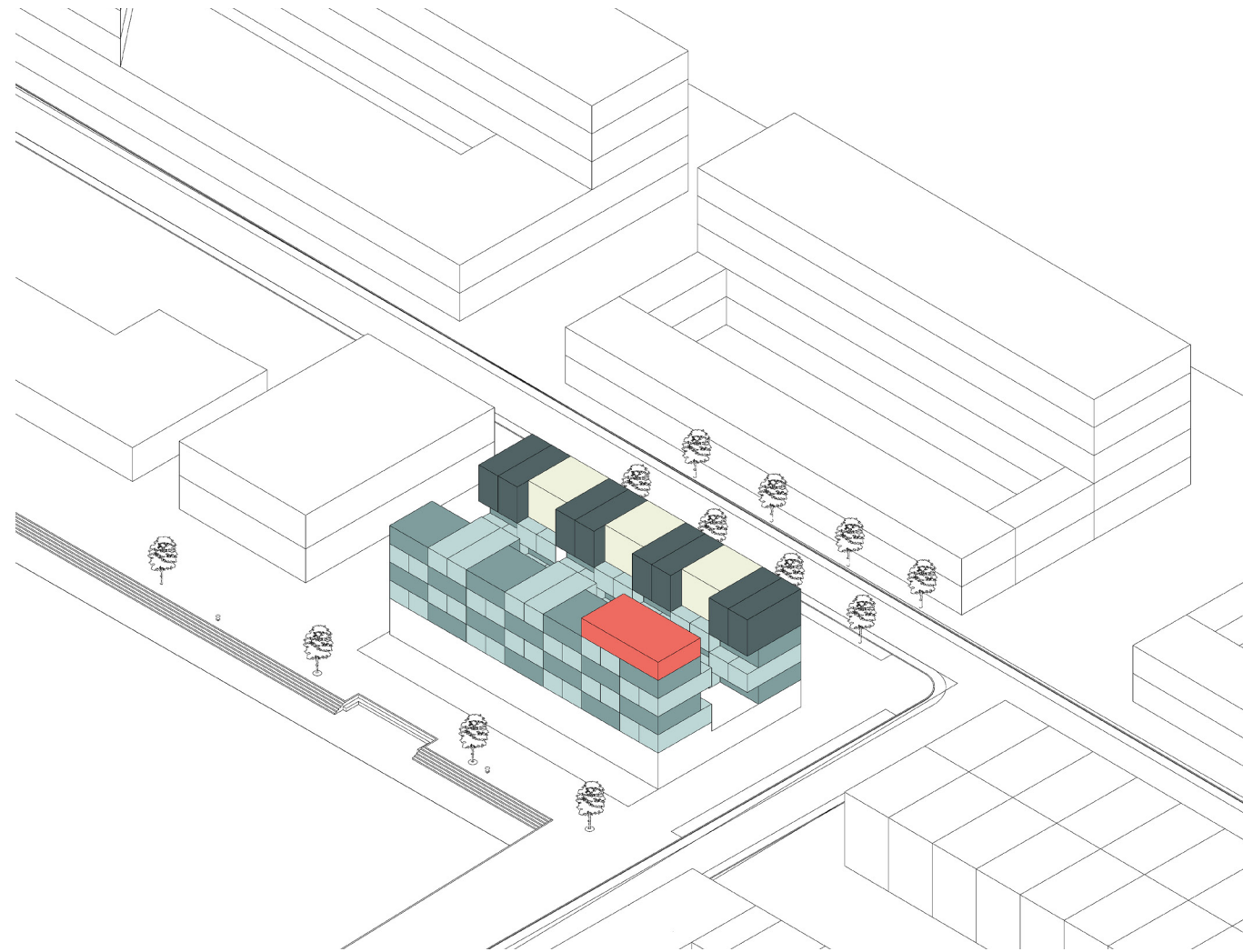


First floor

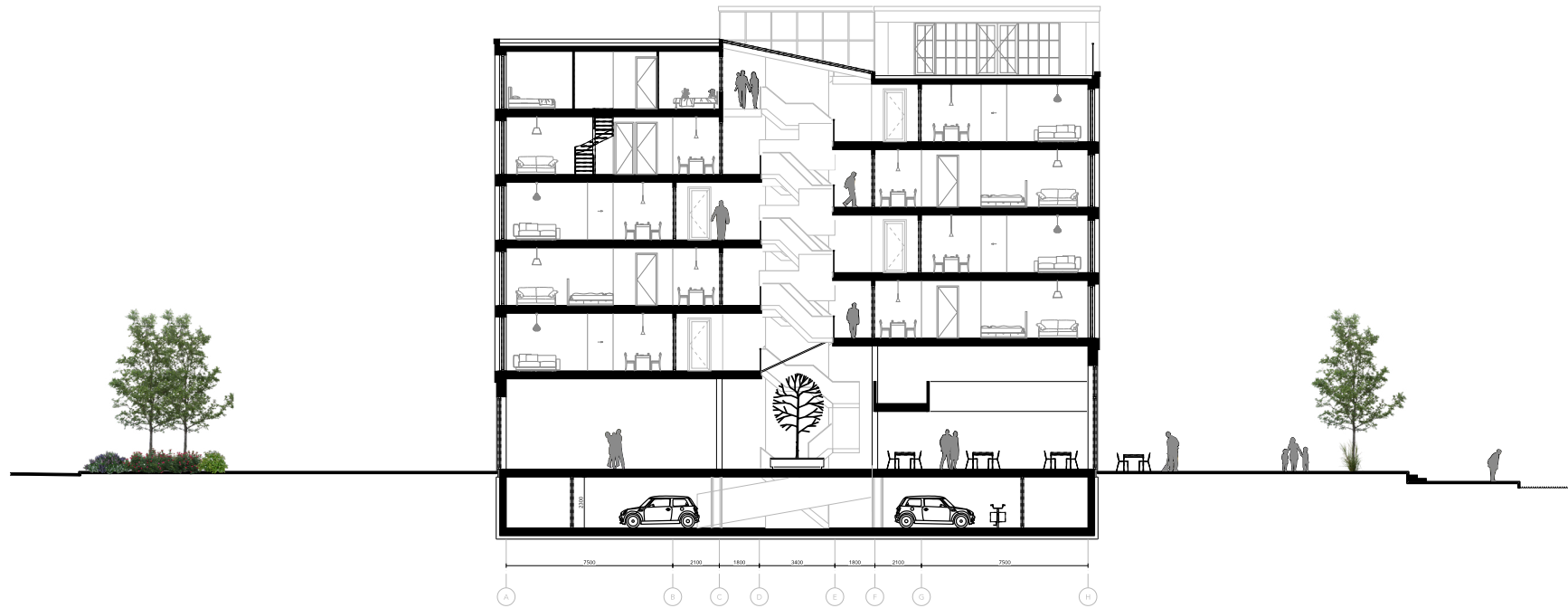
SPATIAL CONFIGURATION



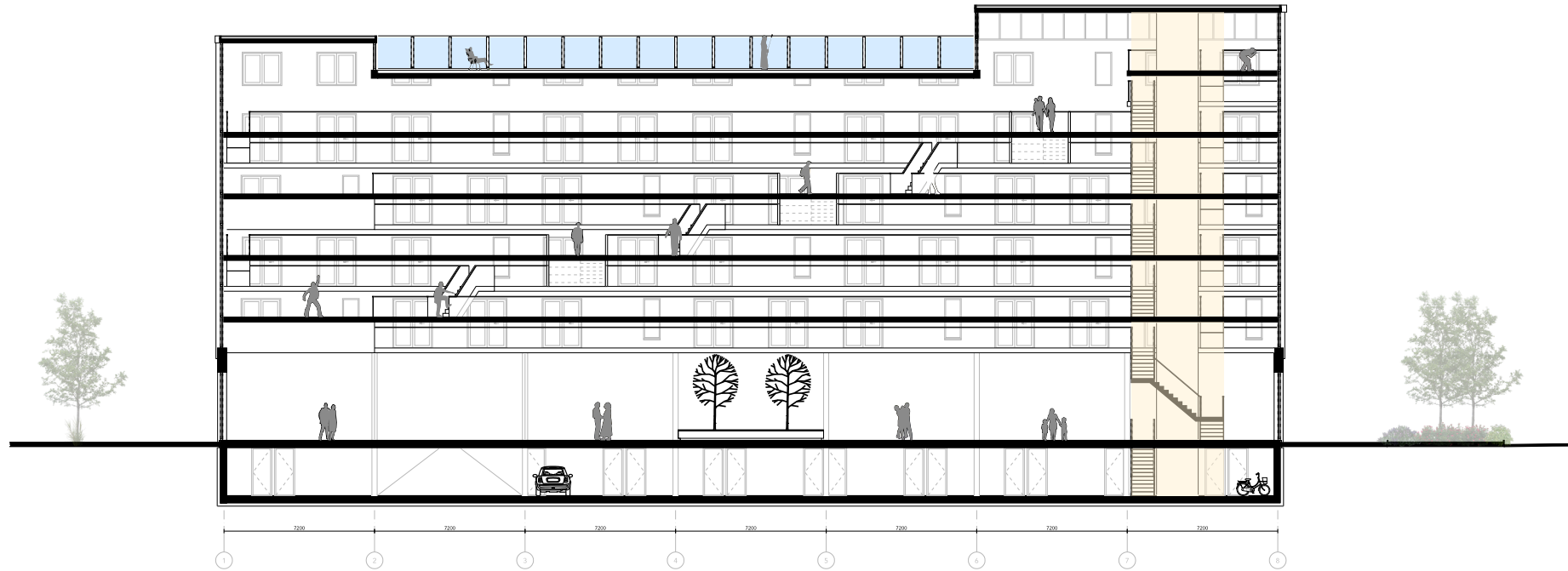
CLUSTERING



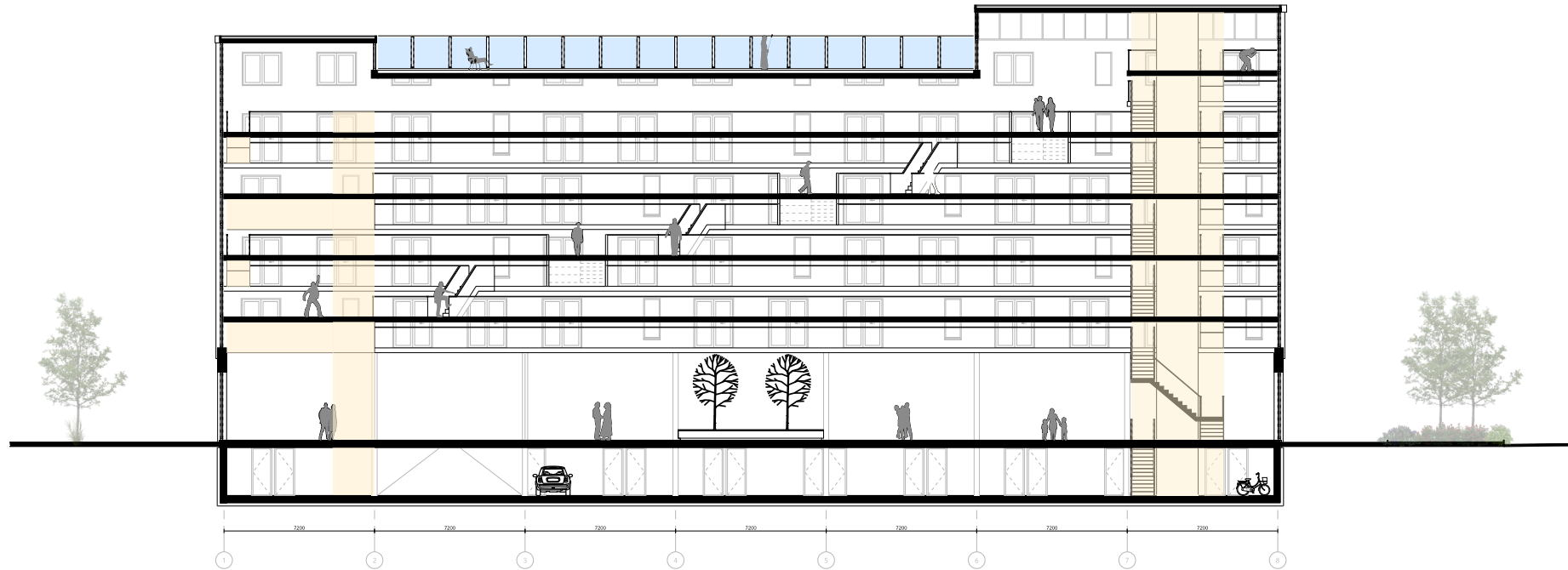
SECTION AA
SPLIT LEVEL CONFIGURATION



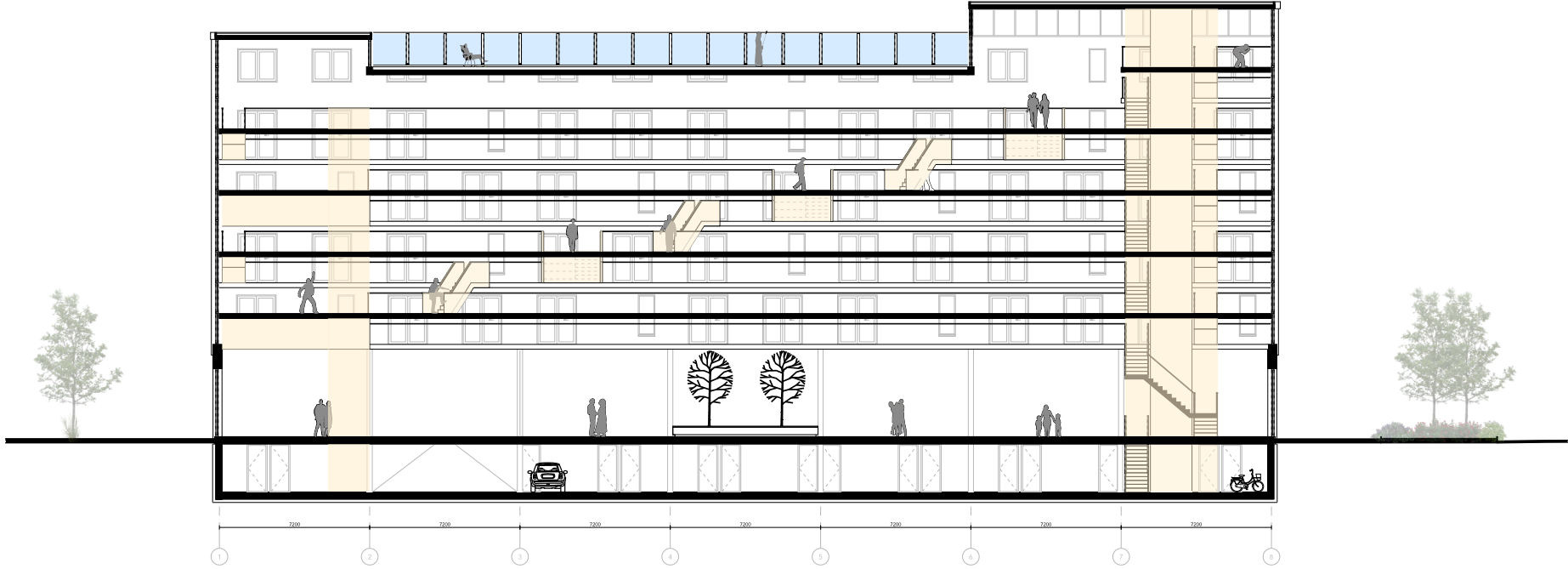
SECTION BB
MAIN STAIRCASE



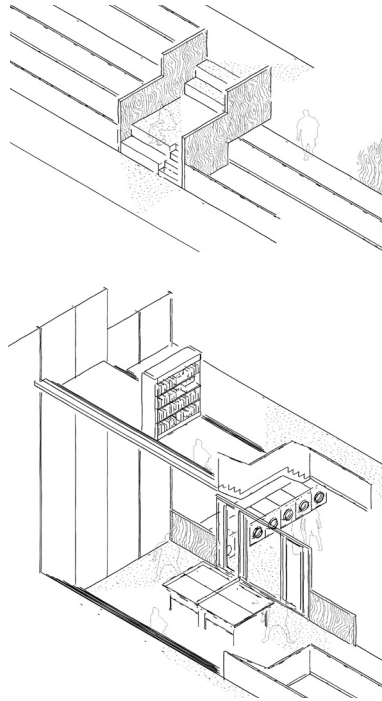
SECTION BB
EMERGENCY STAIRCASE



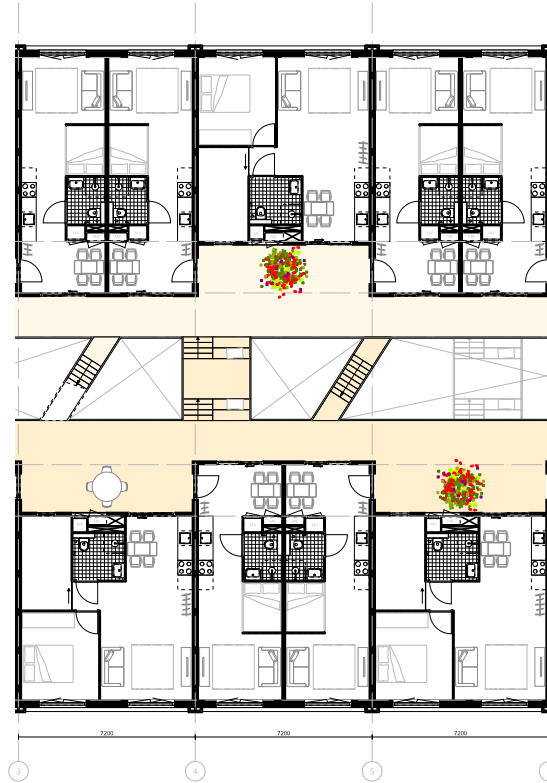
SECTION BB
EMERGENCY STAIRCASE



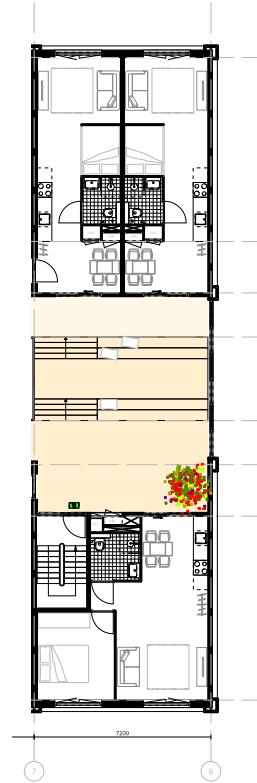
SOCIAL STAIRS



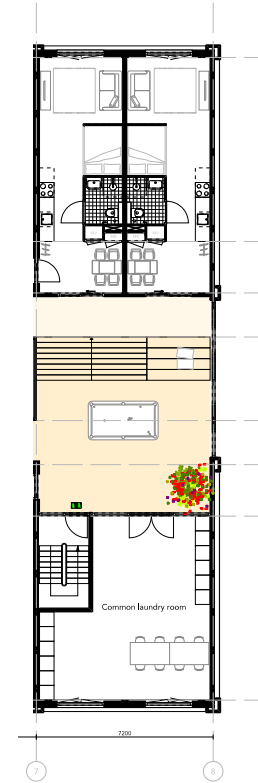
Connection with the public inner space



fragment stairs third floor

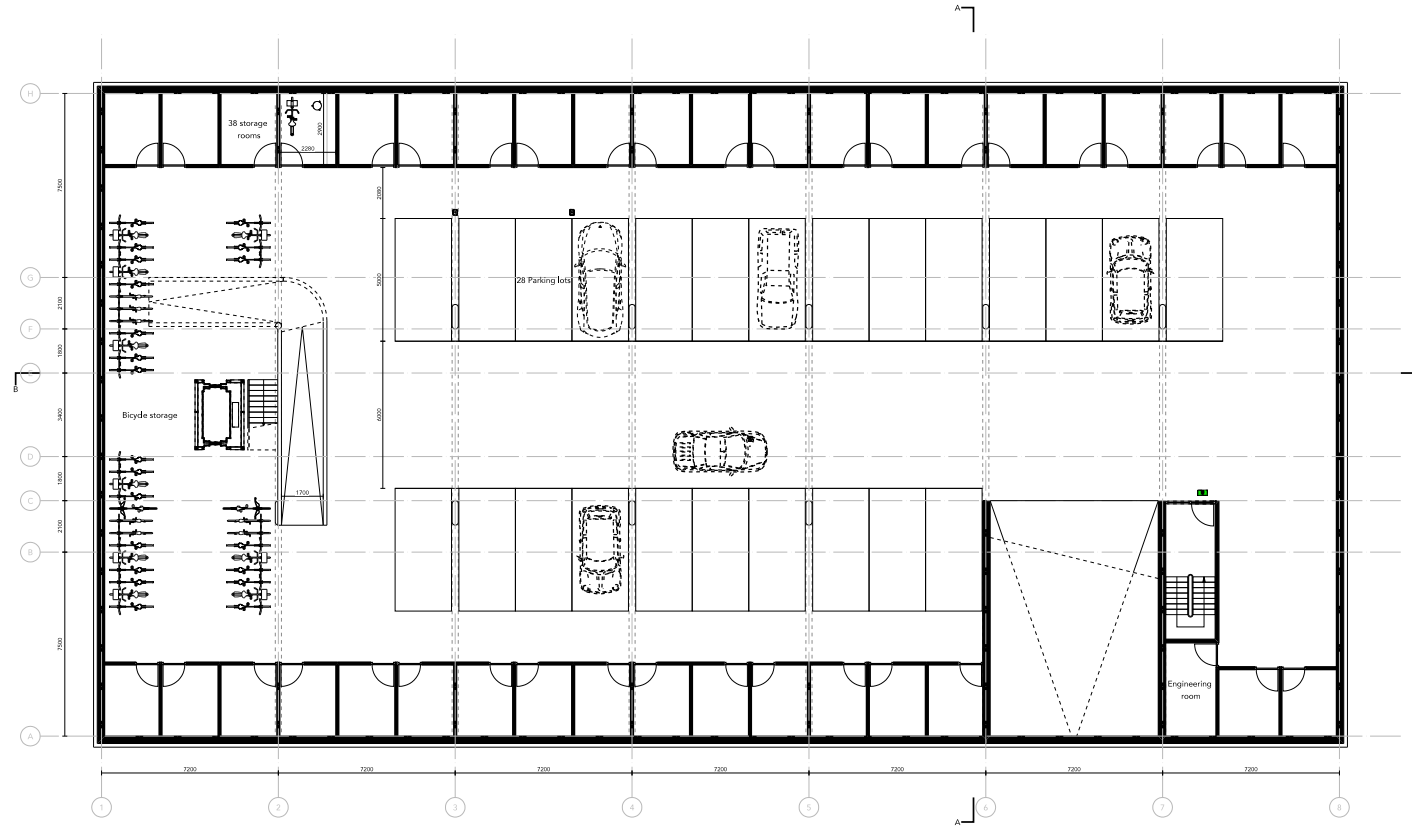
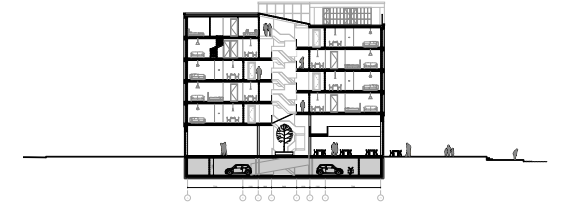


fragment stairs third floor

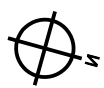
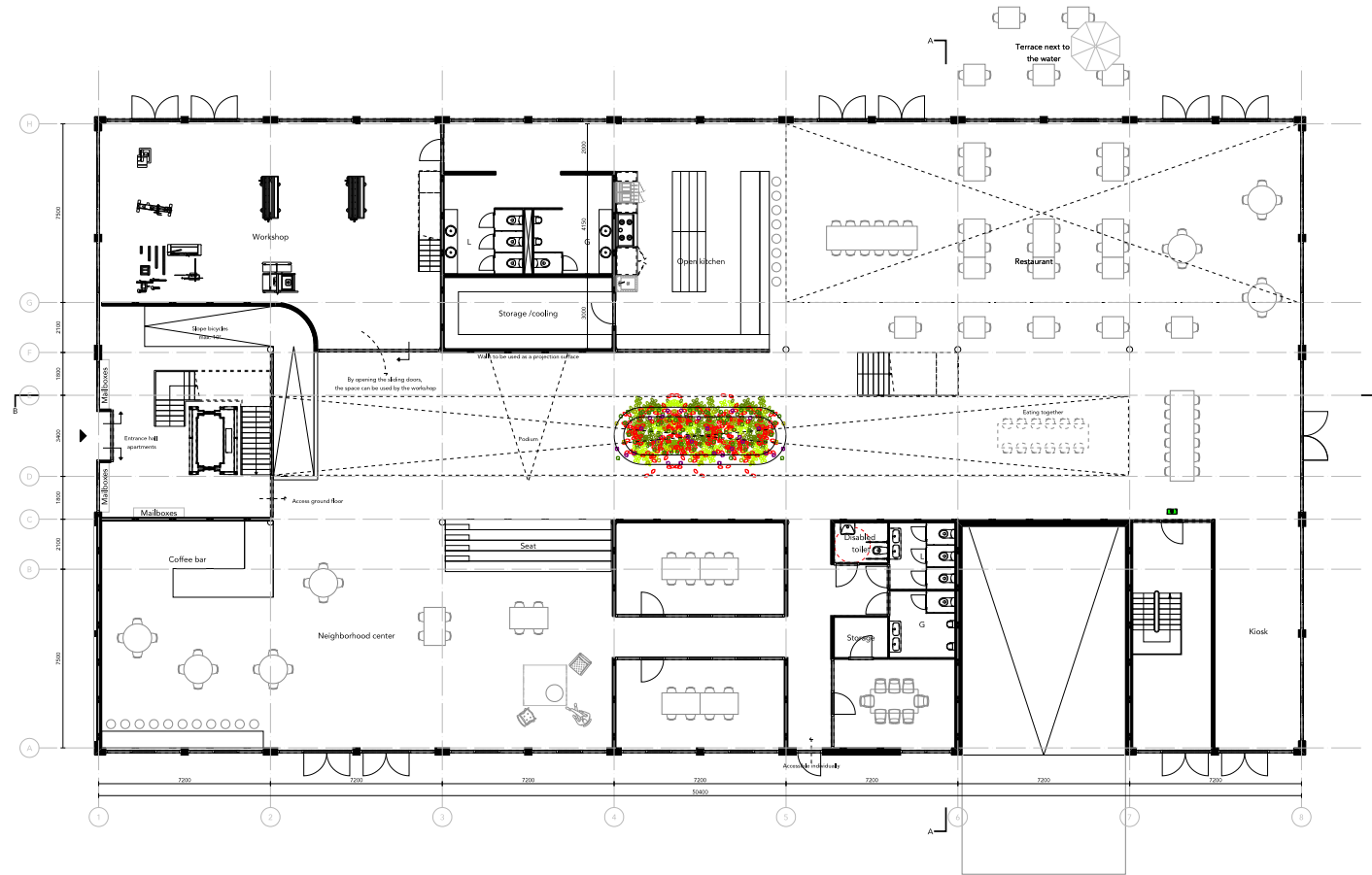


fragment stairs ground floor

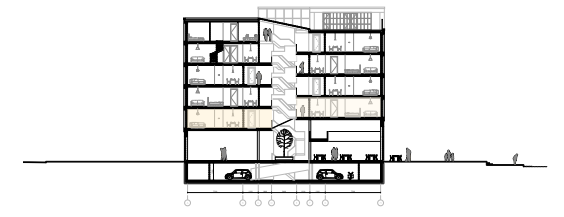
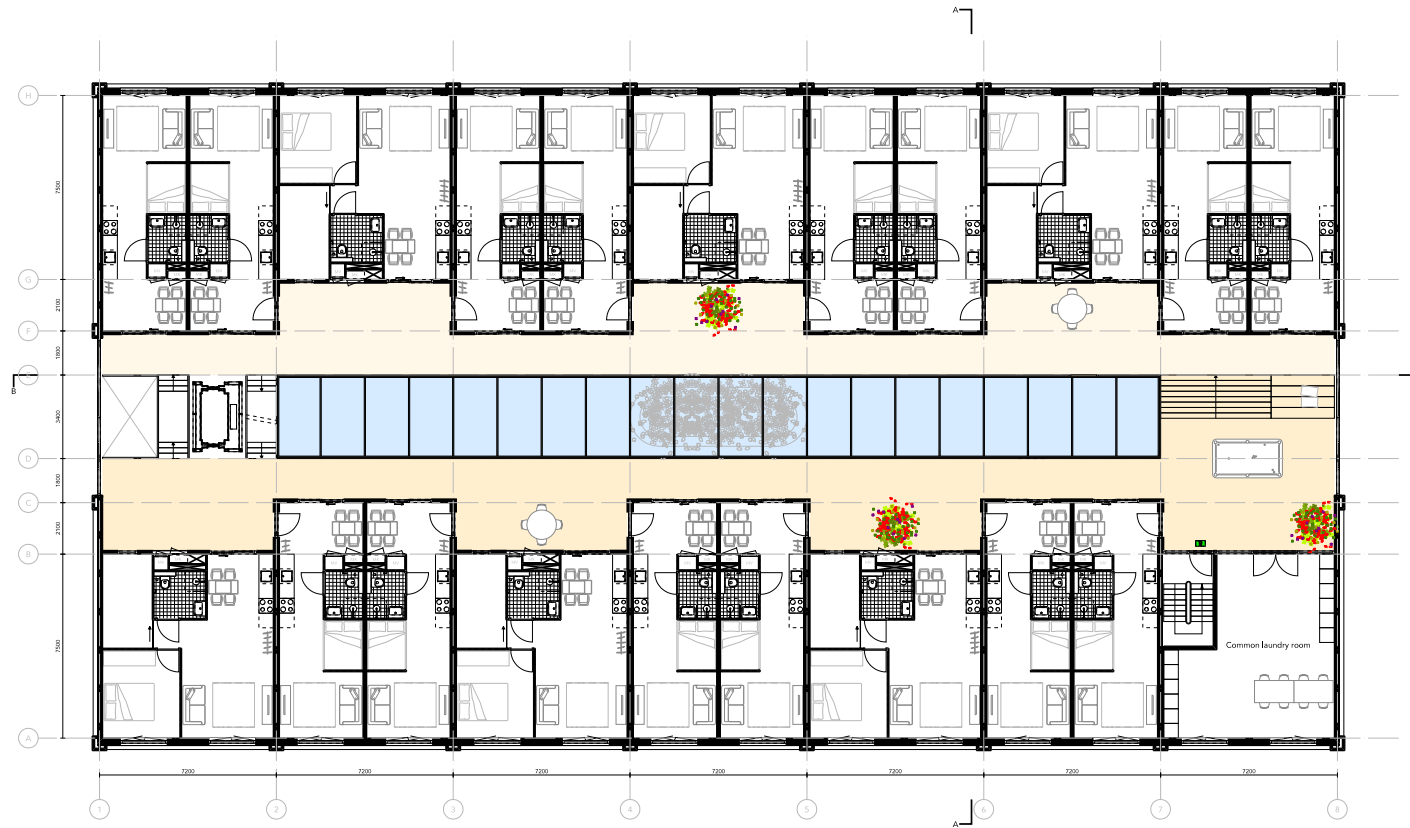
PARKING GARAGE



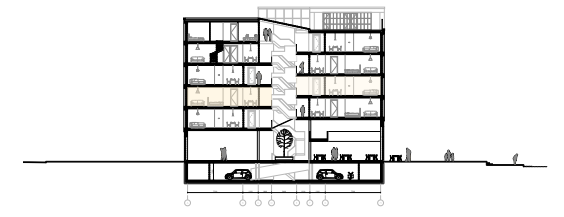
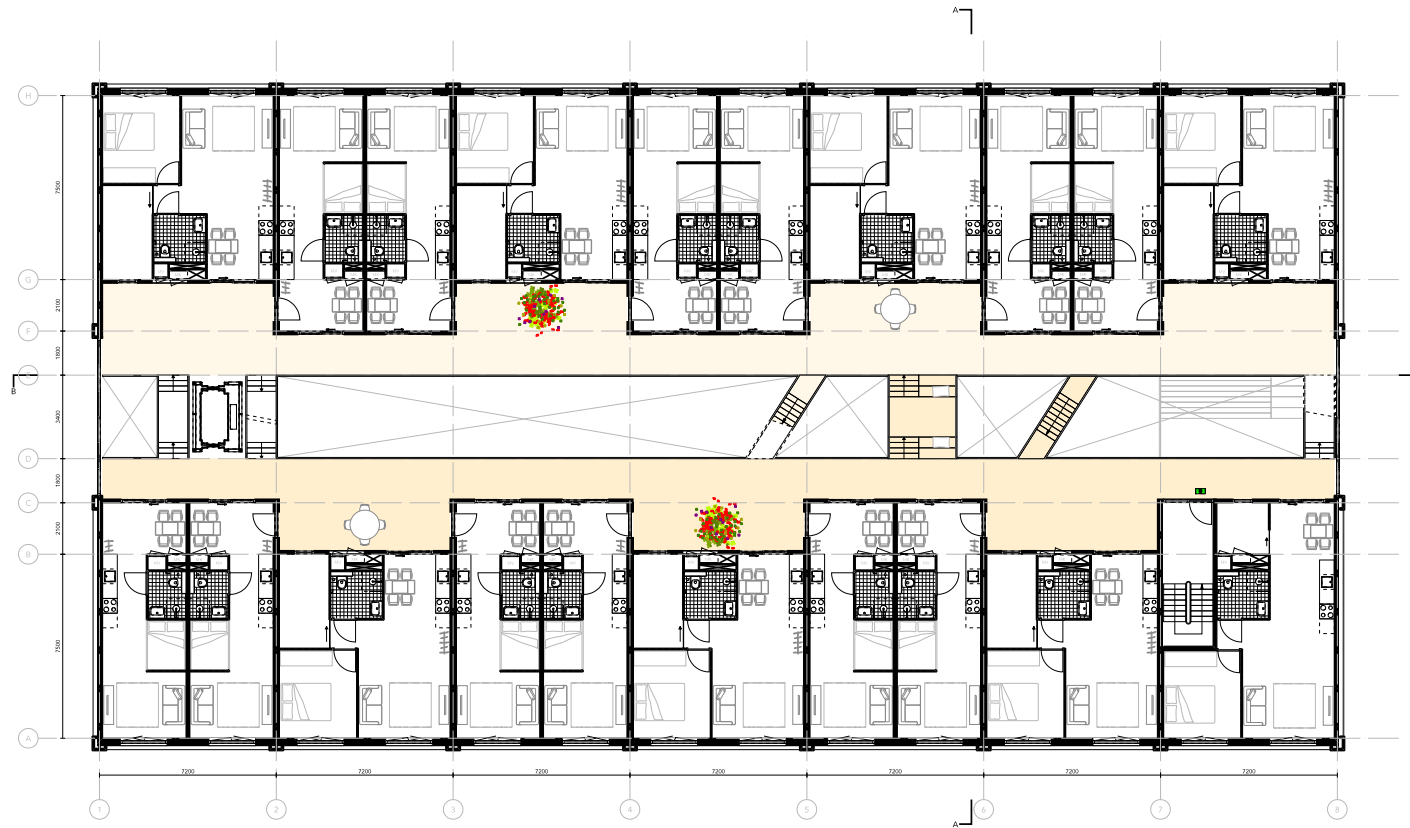
GROUND FLOOR



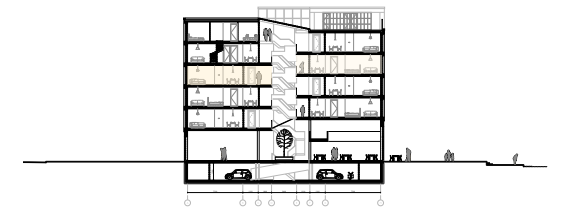
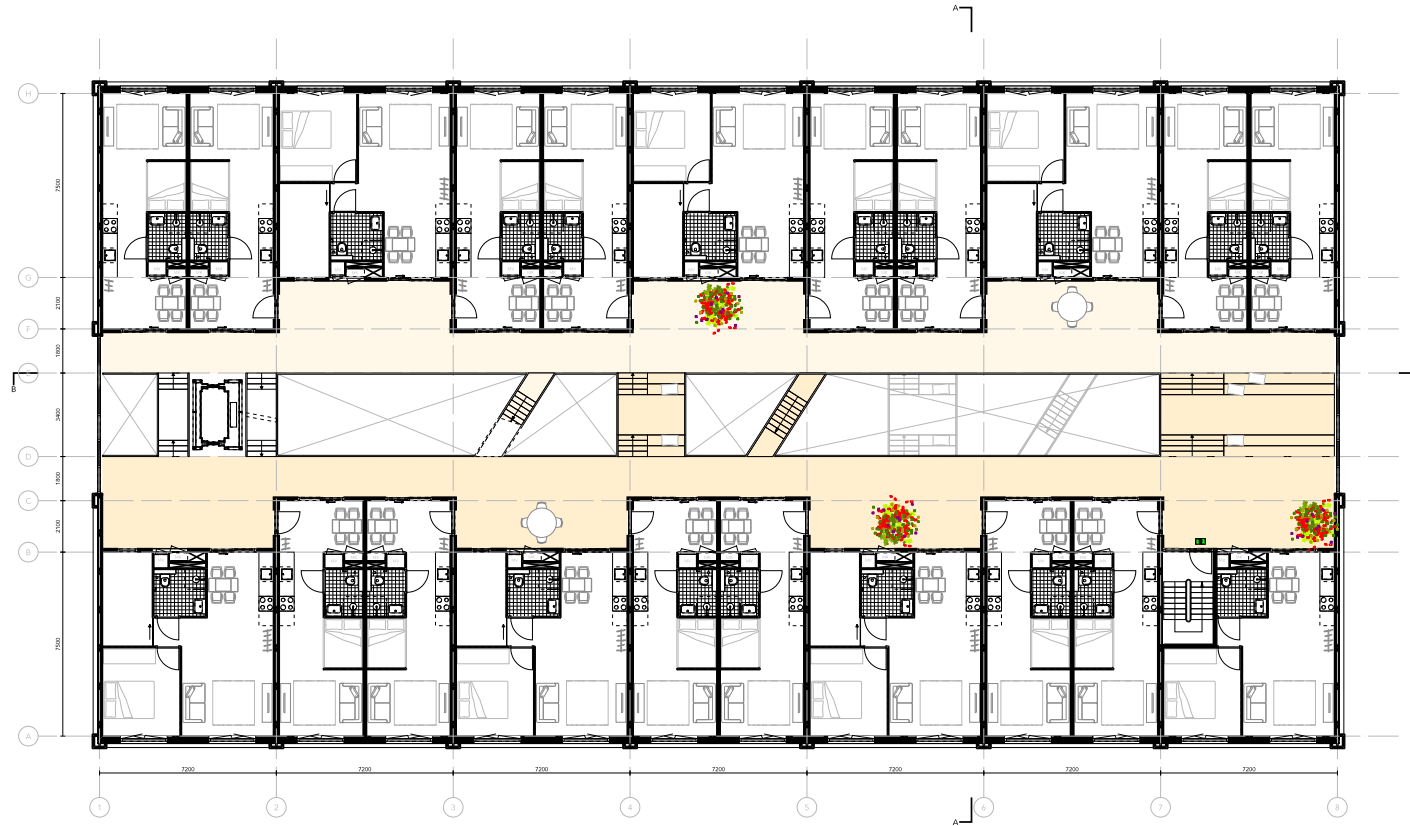
FIRST FLOOR



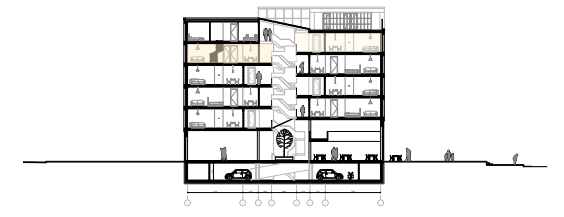
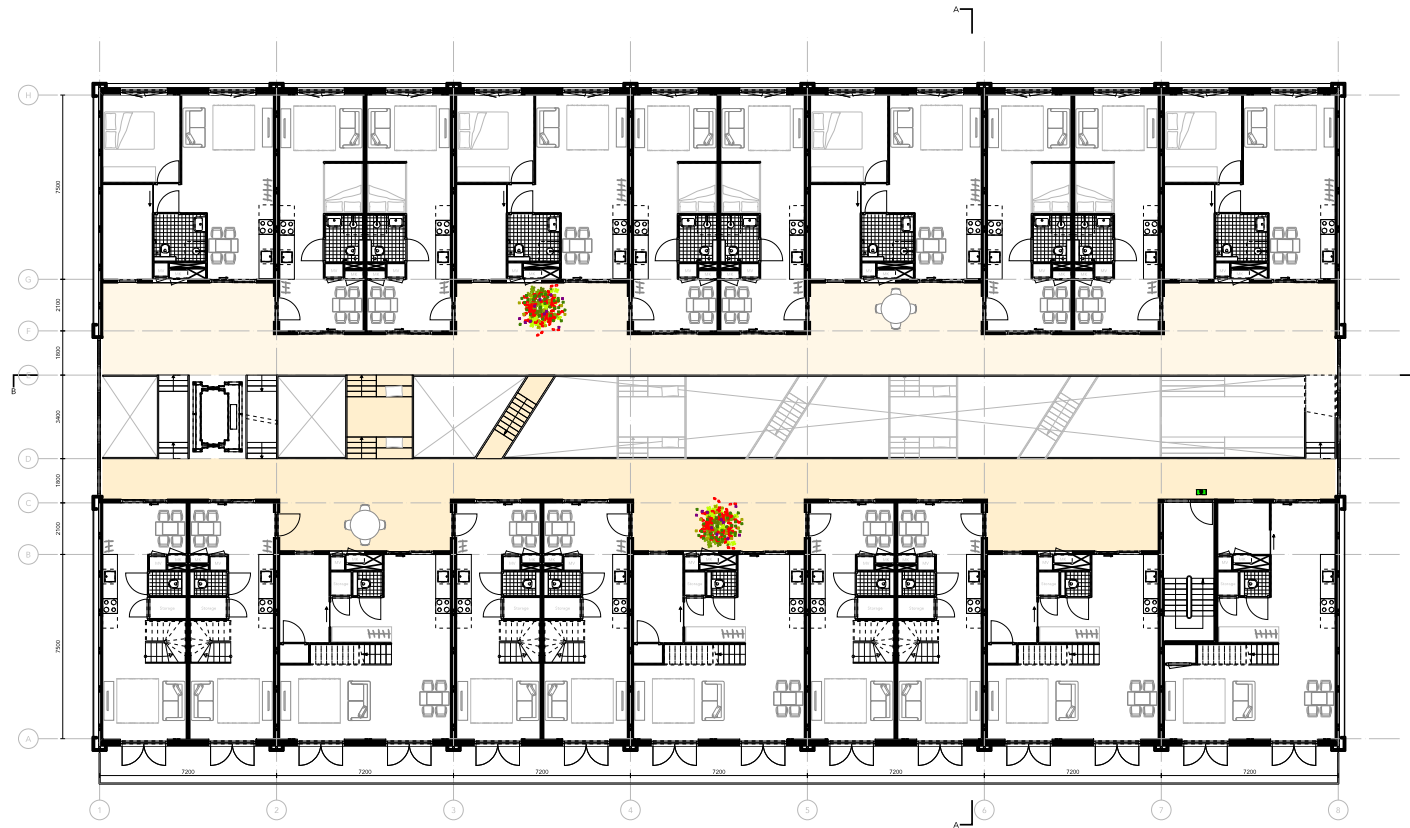
SECOND FLOOR



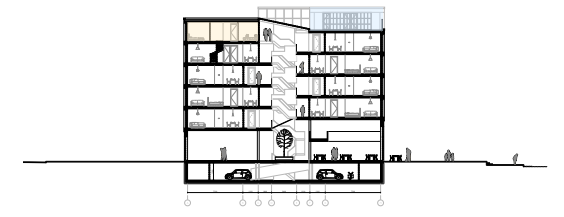
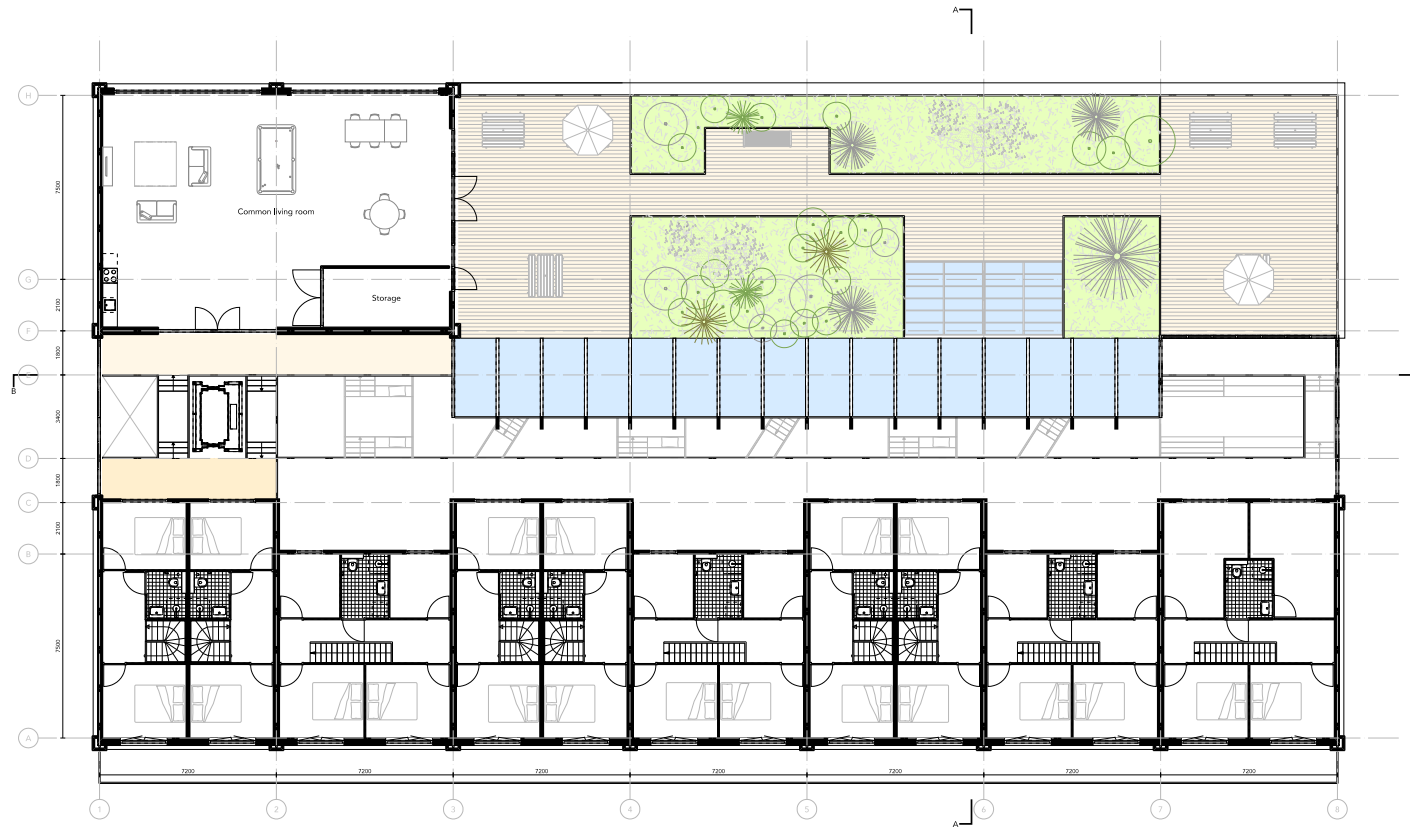
THIRD FLOOR



FOURTH FLOOR



FIFTH FLOOR



ARTIST'S IMPRESSION ROOF TERRACE



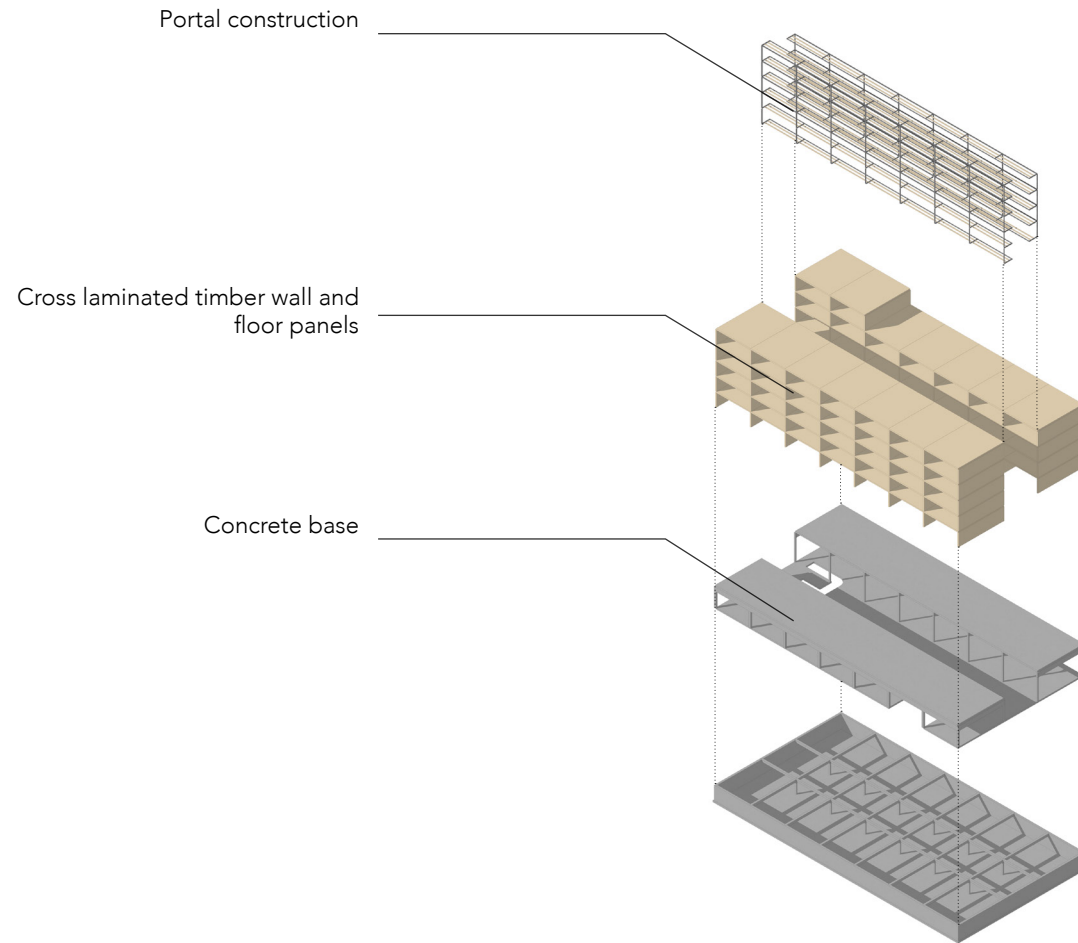
INTERIOR IMPRESSION



INTERIOR IMPRESSION



CONSTRUCTION

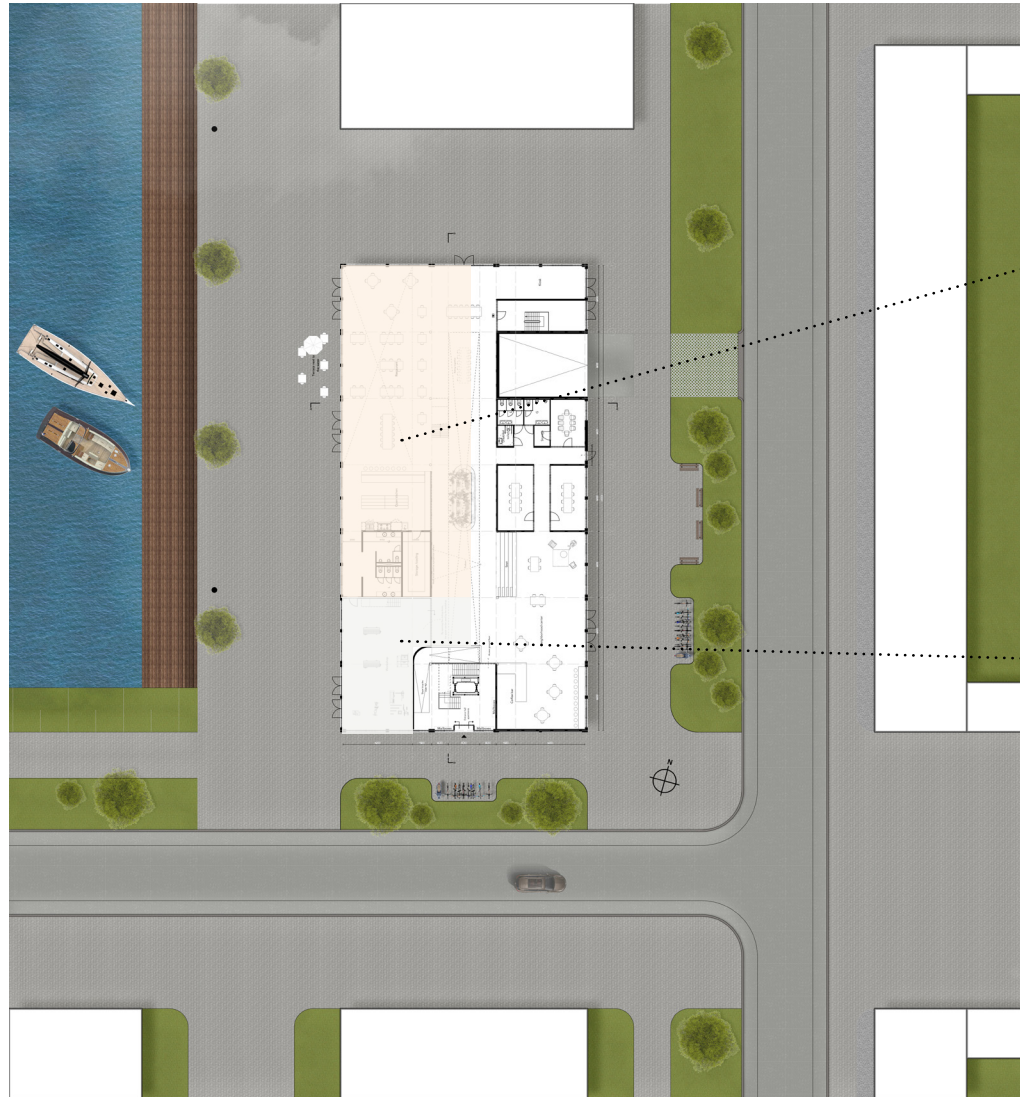


Connection with the public space

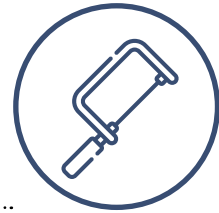
URBAN PLAN
CONNECTION WITH THE PUBLIC SPACE



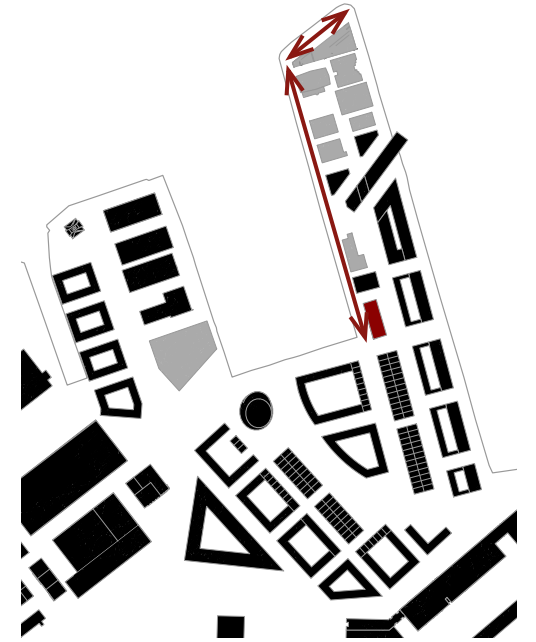
URBAN PLAN
CONNECTION WITH THE COMMERCIAL AREA



Restaurant



Workshop



● Dwelling

● Non dwelling



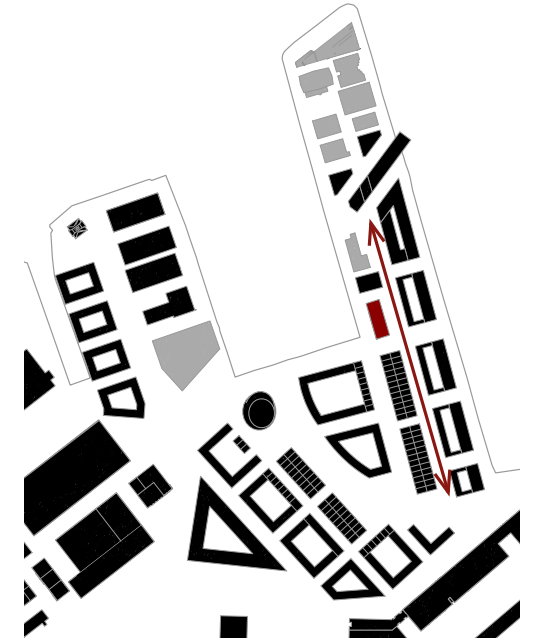
ARTIST'S IMPRESSION WEST FACADE
ACTIVE HARBOR



URBAN PLAN
CONNECTION TO THE NEIGHBORHOOD



Community center



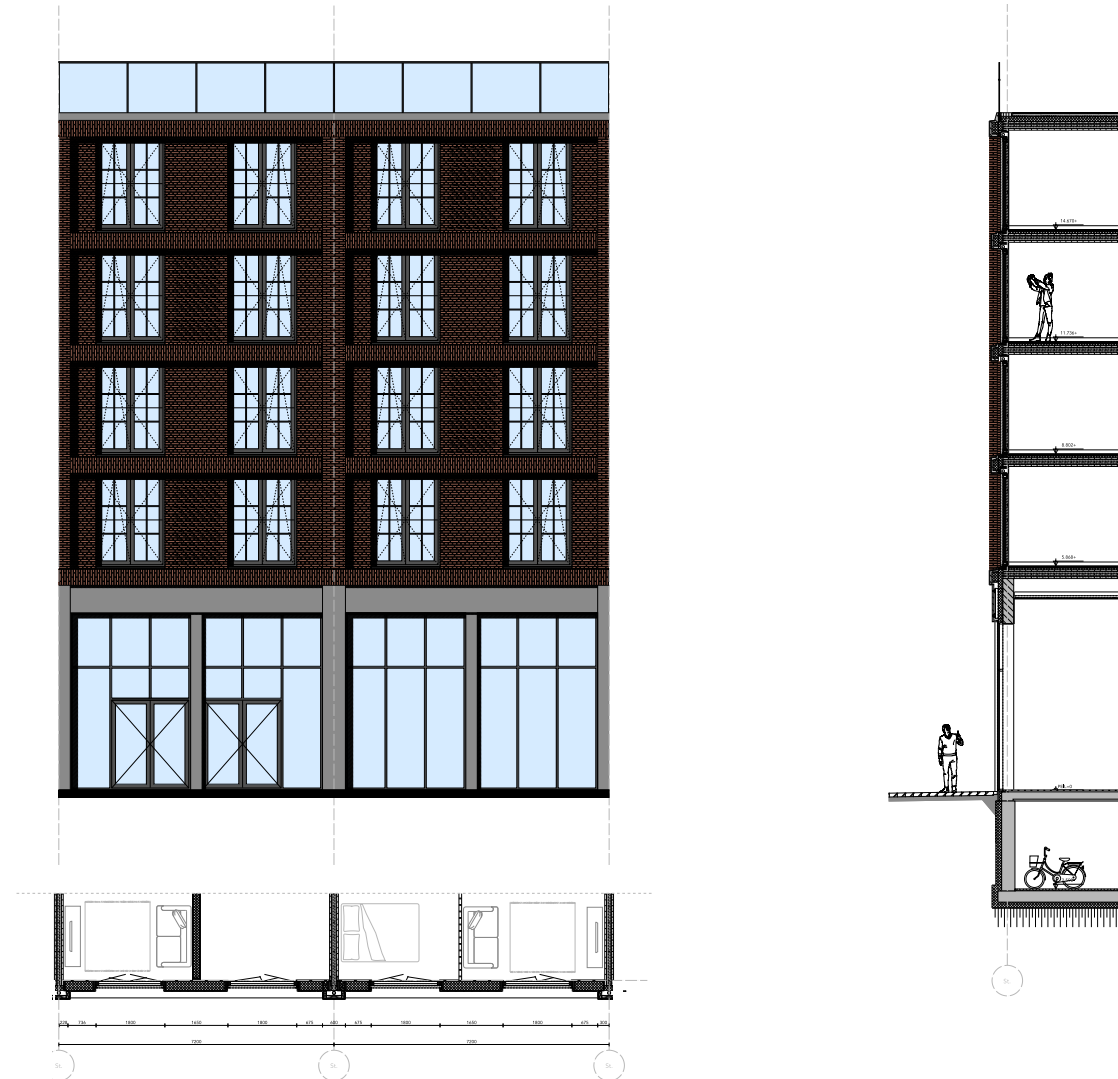
- Dwelling
- Non dwelling



ARTIST'S IMPRESSION SOUTH EAST FACADE
CONNECTION NEIGHBORHOOD CENTER WITH THE PUBLIC SPACE



FACADE FRAGMENT



SOUTH ELEVATION



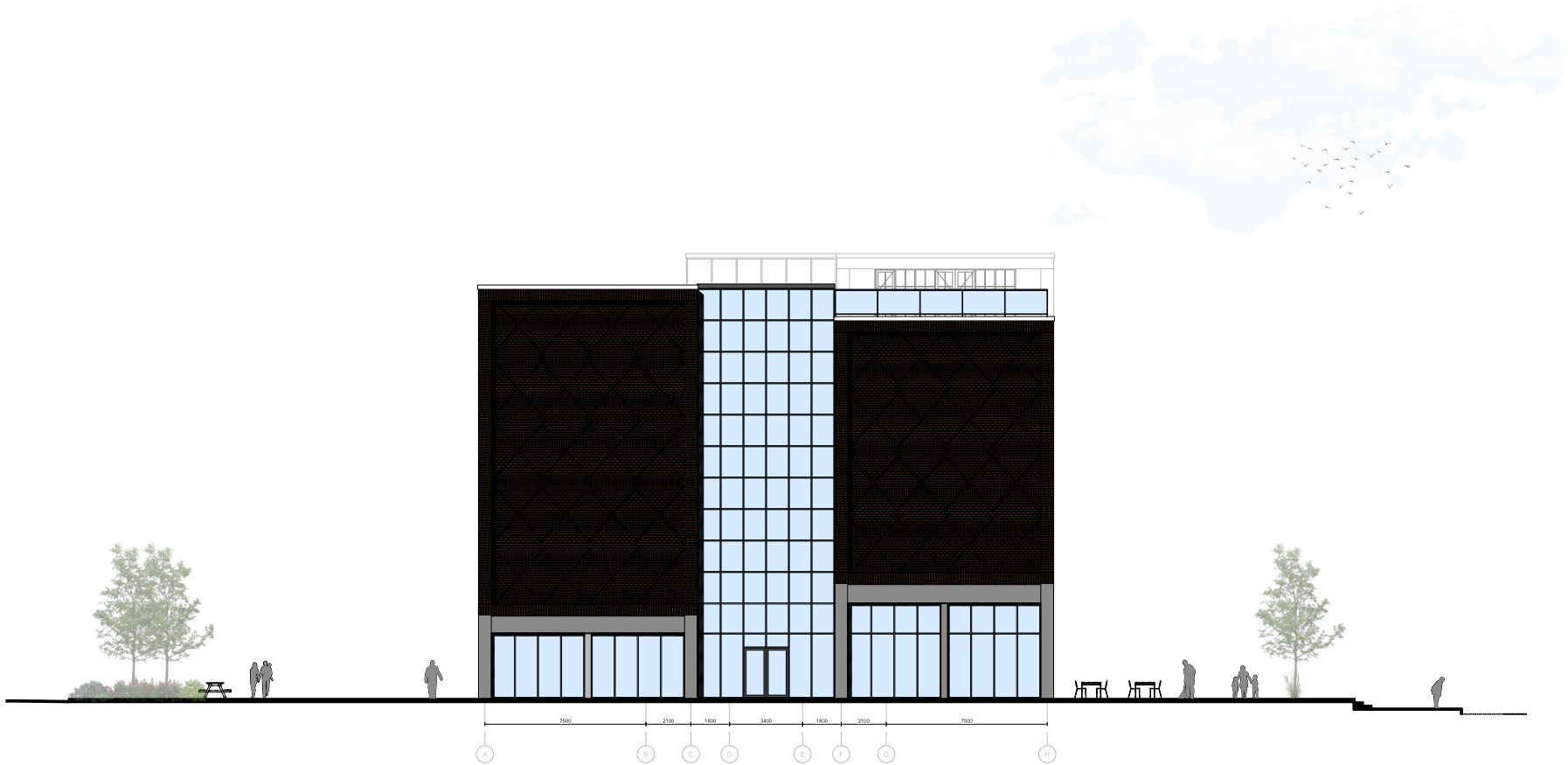
WEST ELEVATION



EAST ELEVATION



NORTH ELEVATION



ARTIST'S IMPRESSION SOUTH WEST FACADE
ORNAMENT AND MATERIALITY



There is no place like Home

*When the cold hard rain was falling
And the streets chilled me to the bone
A voice in me kept calling
There is no place like home*

*It's simple and it may be humble
But it's a place that is my own
To recover when I stumble
There is no place like home*

*With neighbors and community
No longer just a rolling stone
A newfound sense of unity
There is no place like home*

By. Dr Sam Tsemberis
(Poem adapted from original lyrics by John Payne, 1823)