



“BK CITY” --- FACULTY OF ARCHITECTURE

SADD Msc4 Architecture Materialisation & design development
Wenli Wan 1535145



MASTERPLAN

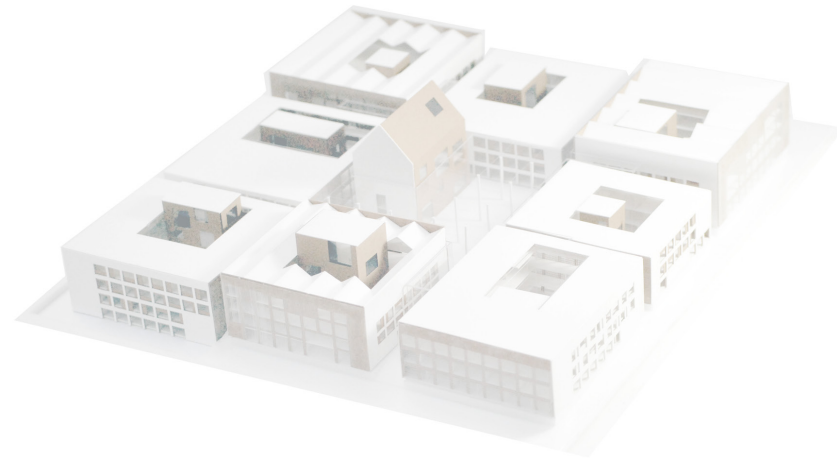
CONCEPT

PROGRAM

FACADE

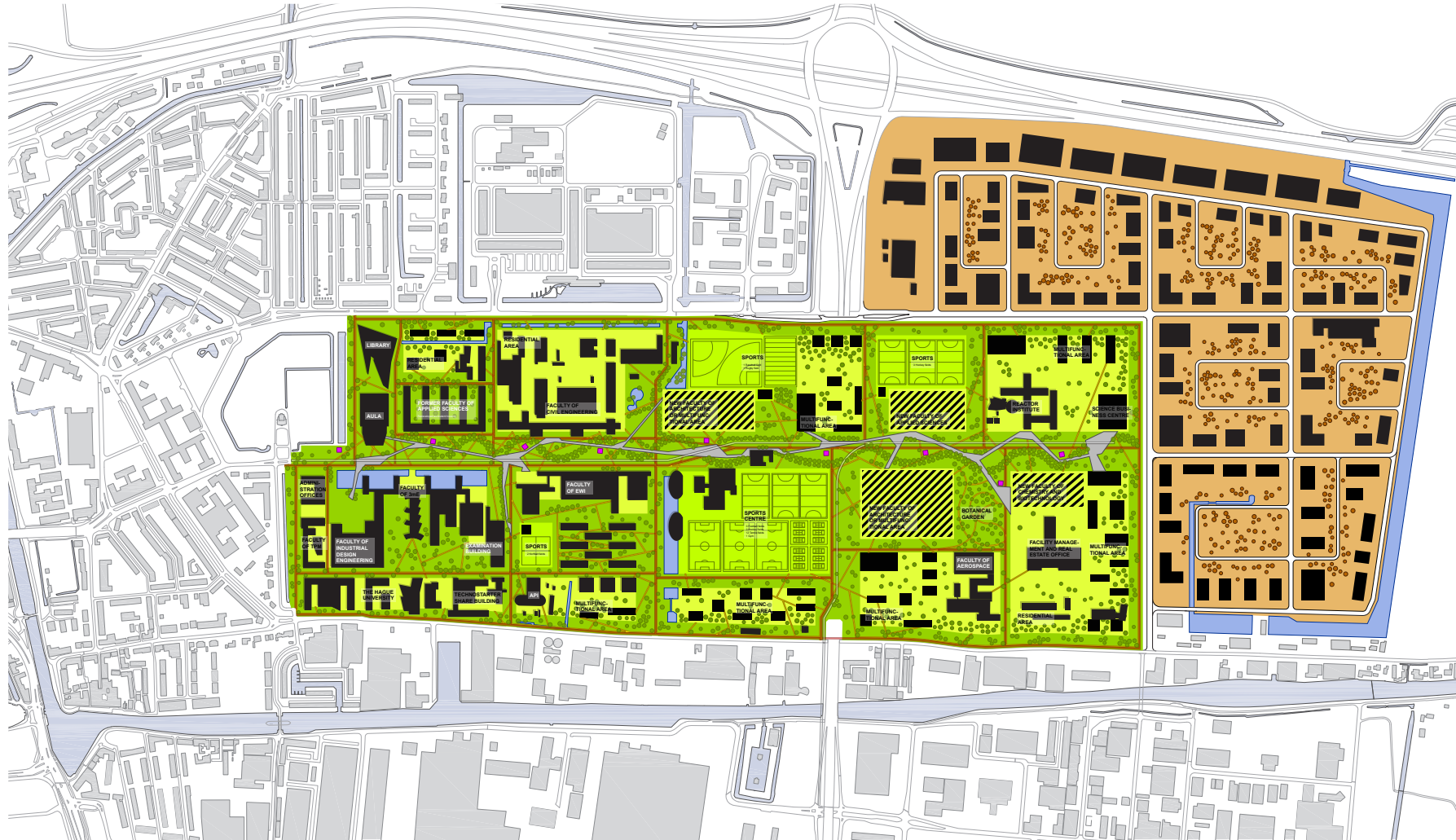
CONSTRUCTION

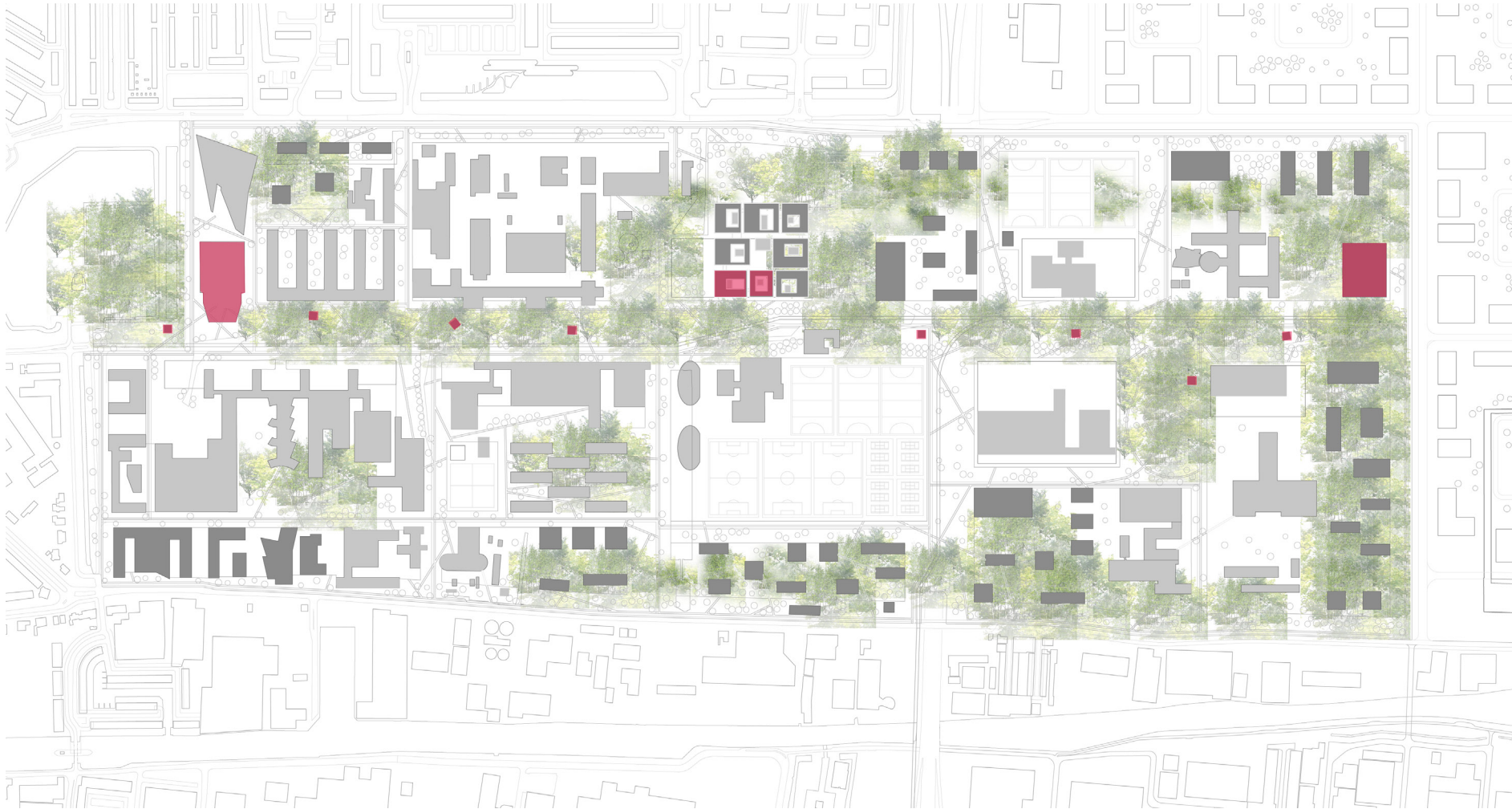
INTERIOR

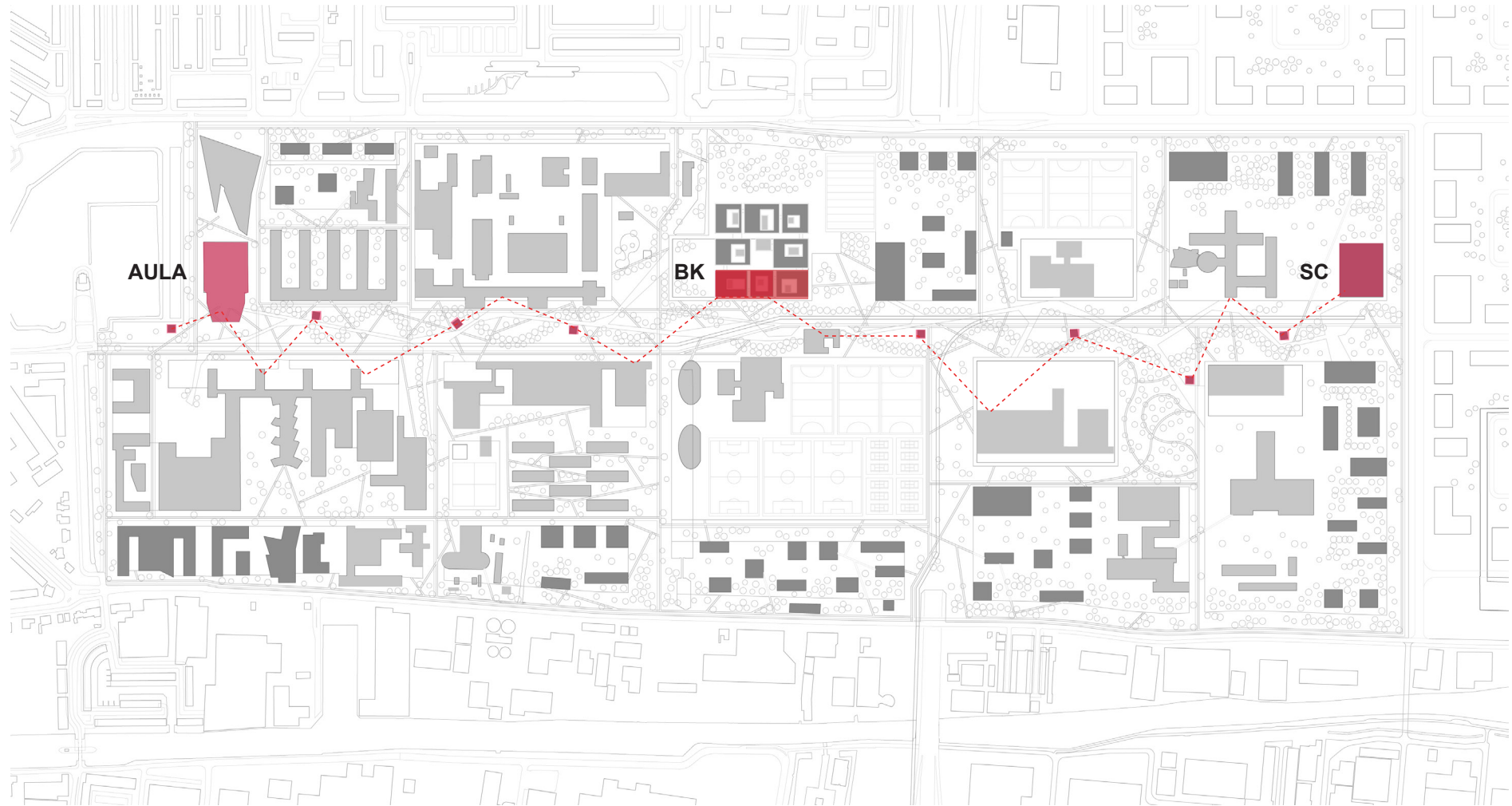


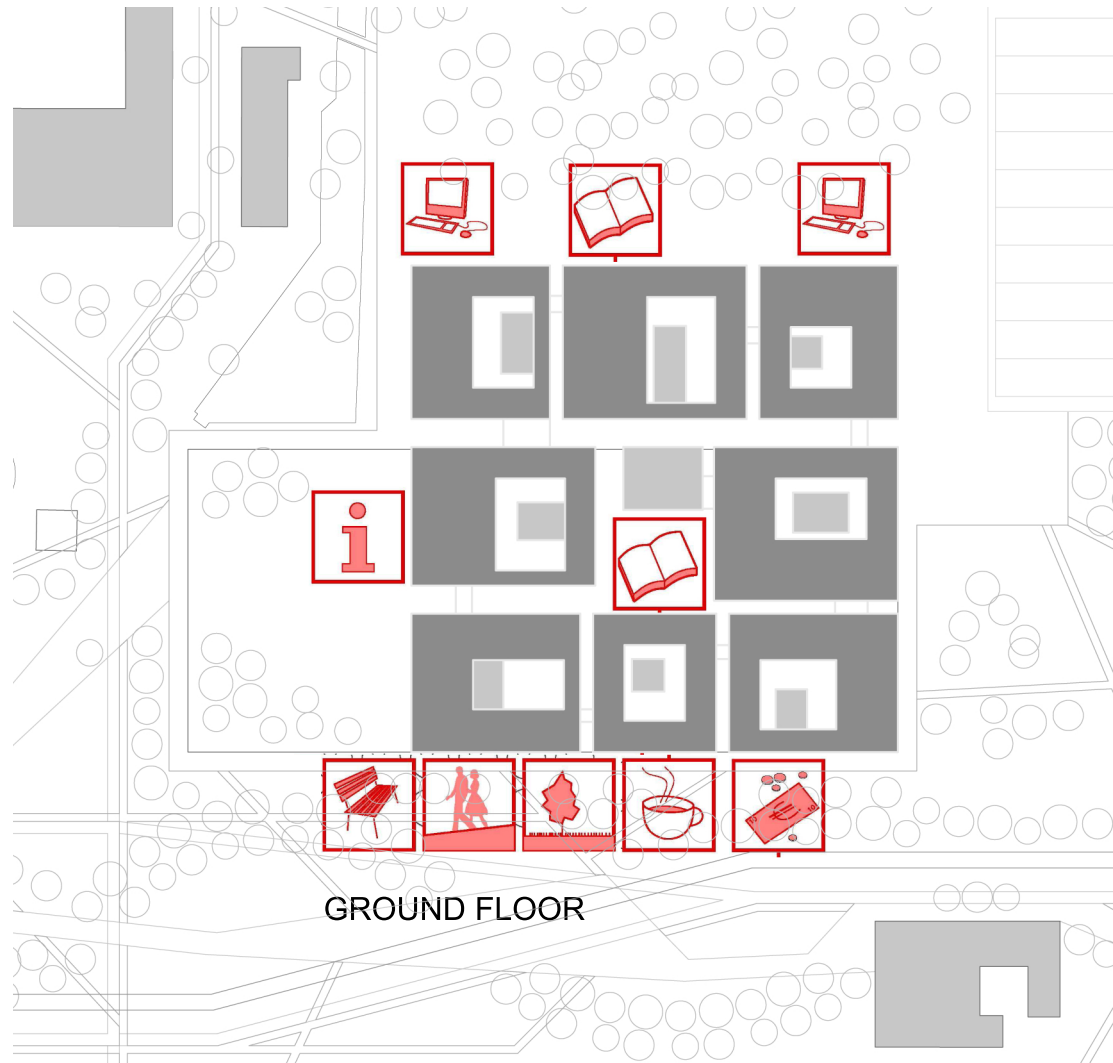


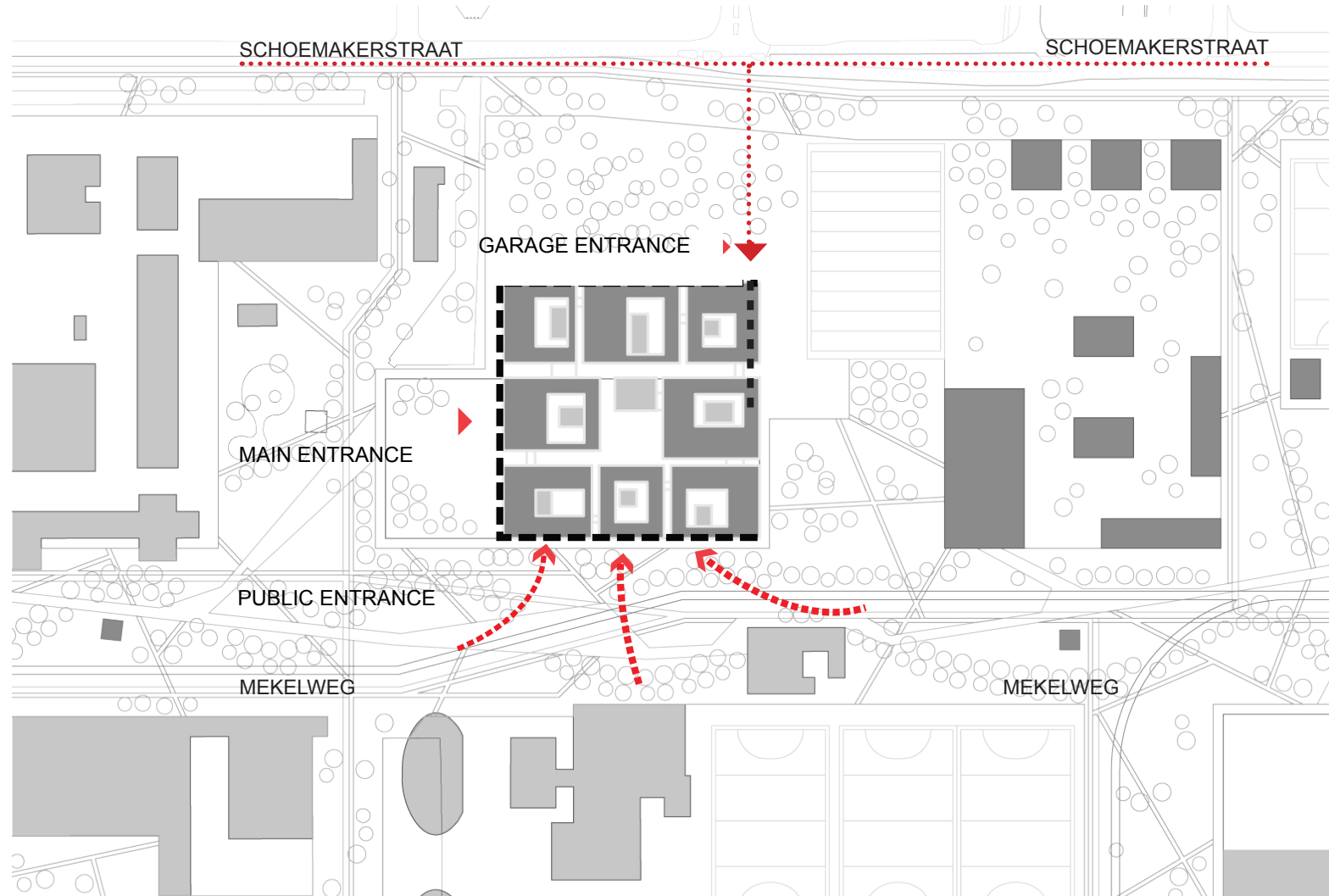
SITE













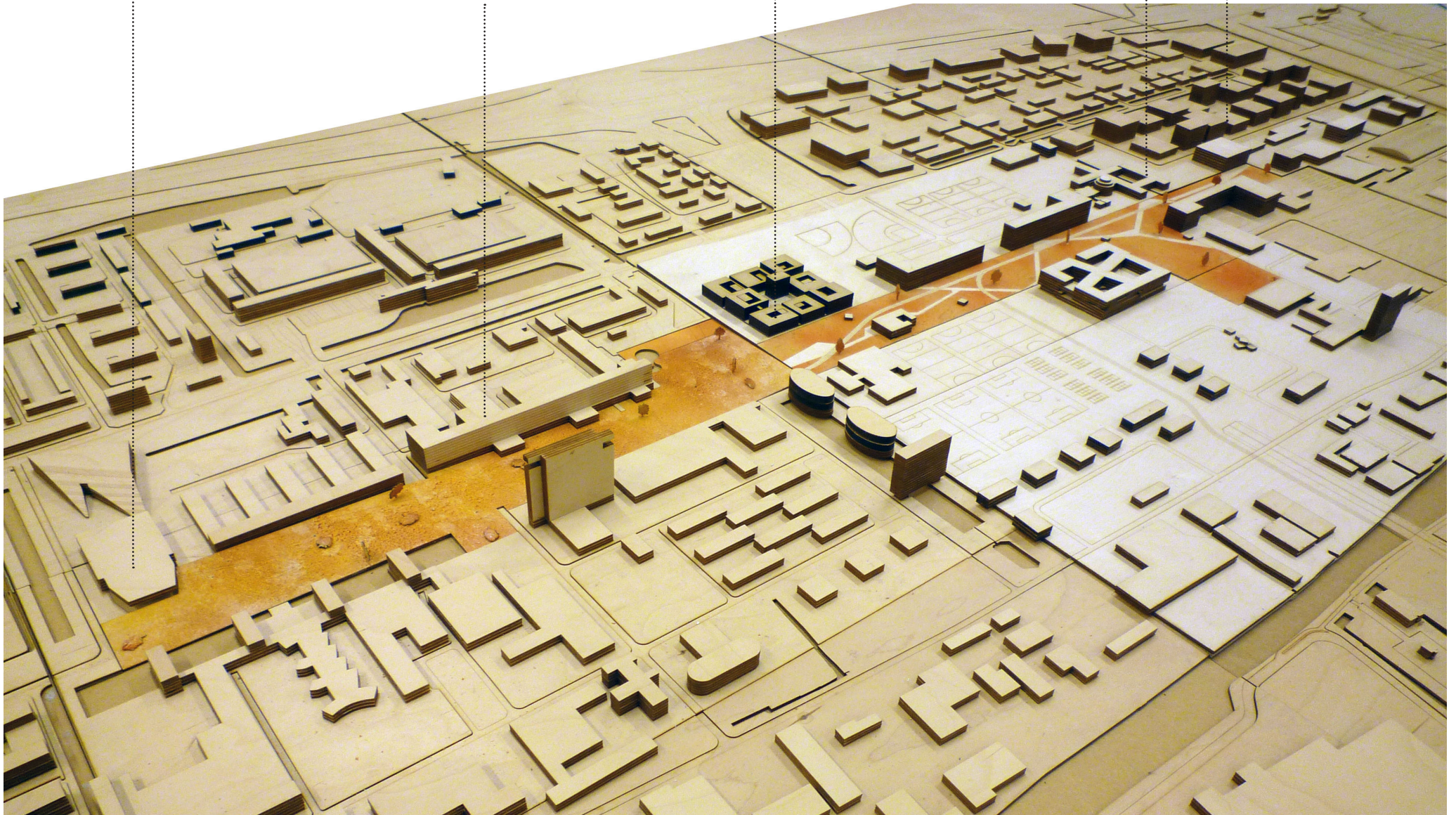
TU Aula

Faculty civil engineering

BK city

Reactor institute Delft

Science Center





MASTERPLAN

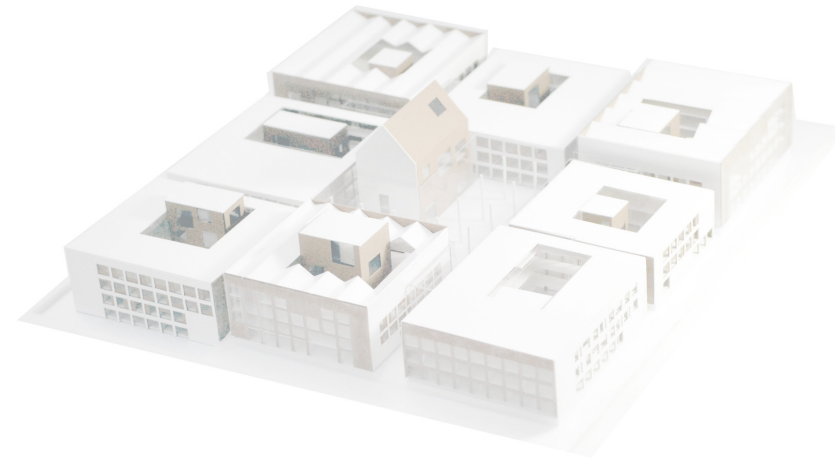
CONCEPT

PROGRAM

FACADE

CONSTRUCTION

INTERIOR





CONCEPT

BK CITY

=

ambiguity

+

relationality

.....



ambiguity 模糊性

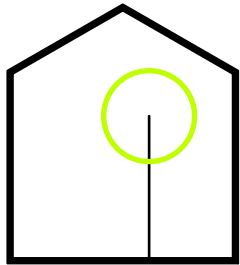


Idealize studio space
filter of light and nature



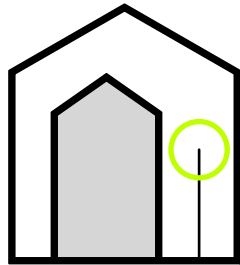
studio
office

...



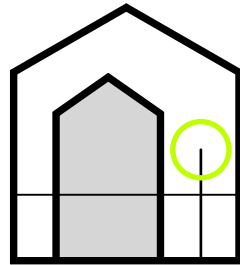
meeting
lecture

...



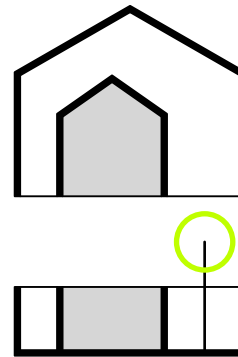
trees
nature

...



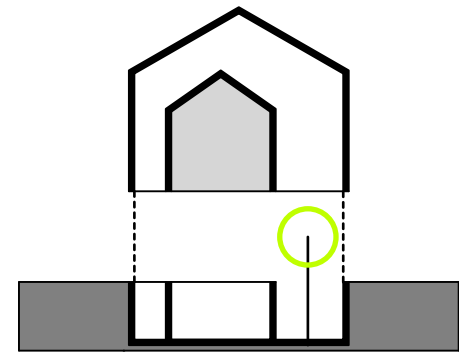
canteen
pub

...

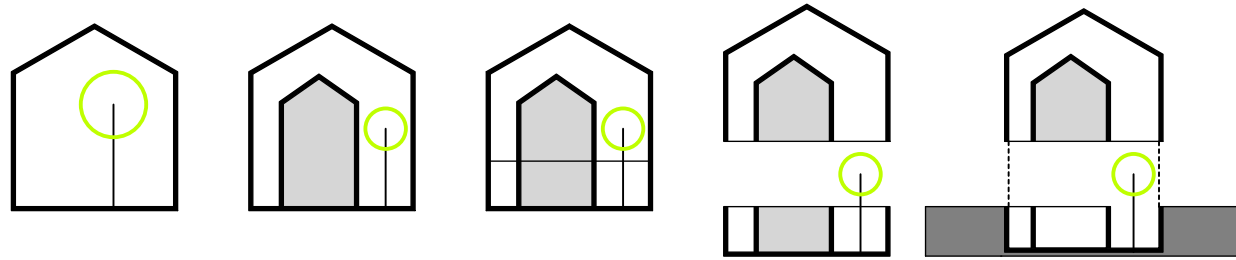


storage
lab

...

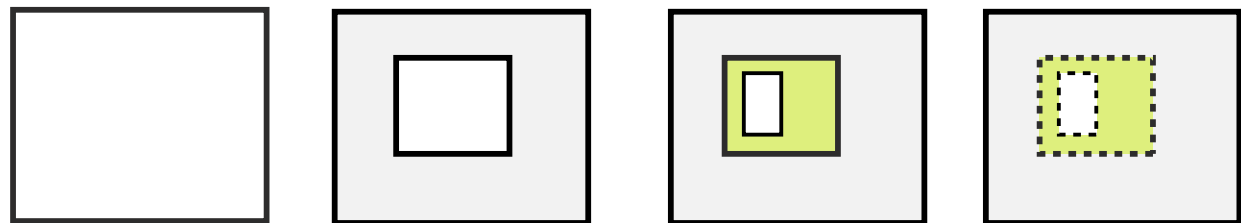


free space gethering space green space.....open space..... dark sapce



vertical relation

+

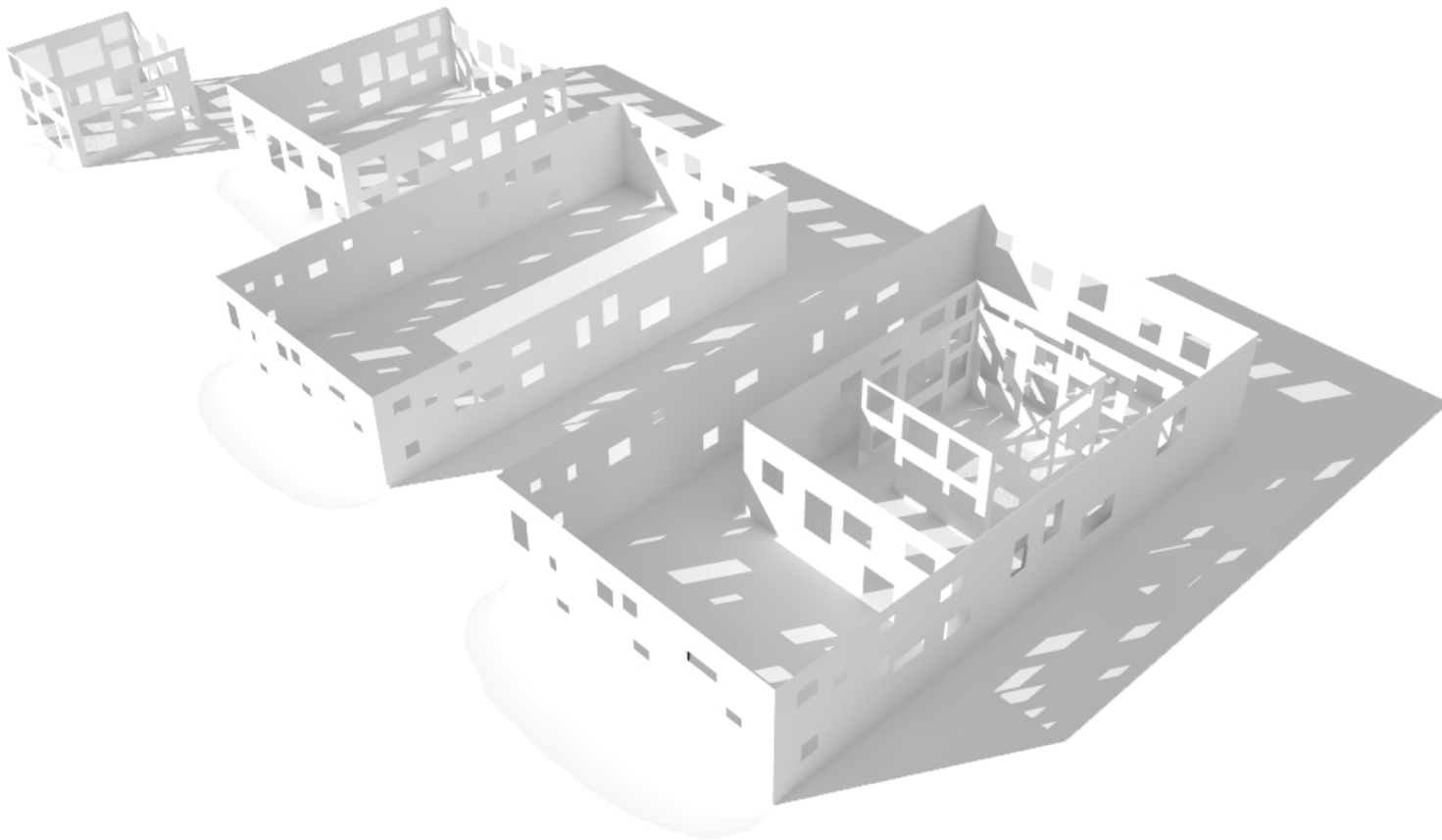


horizontal relation



metaphor

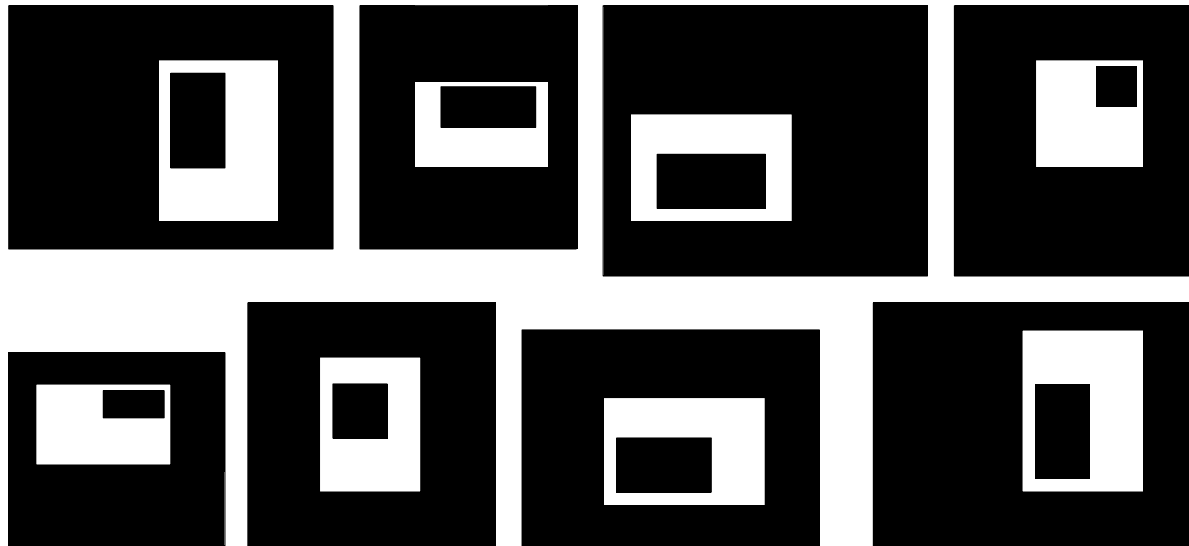
MATRUSHKA



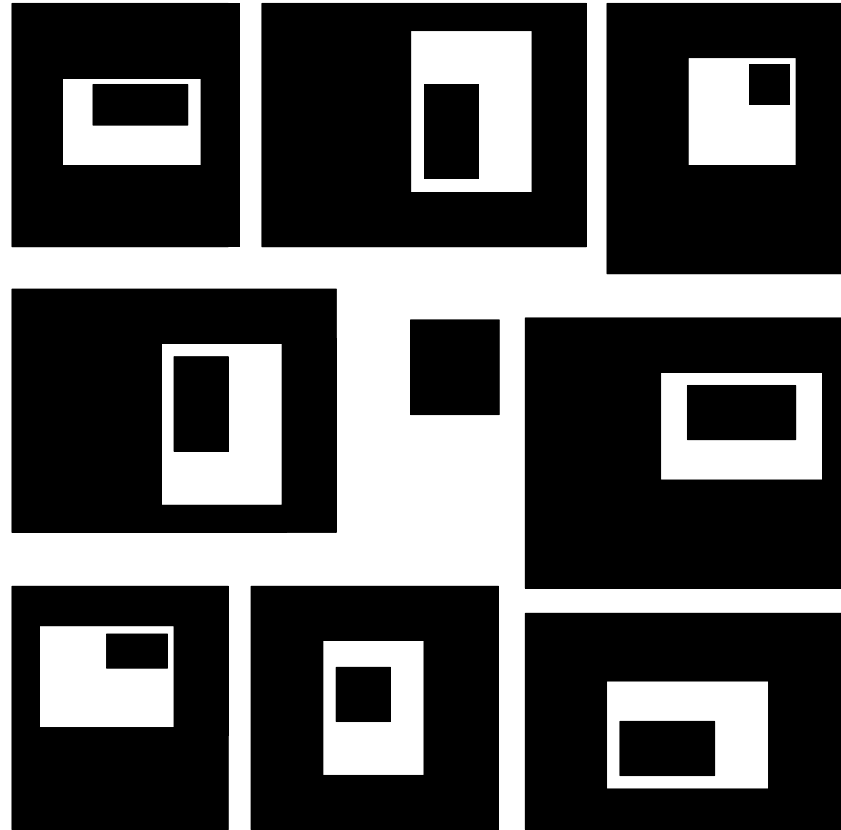
space inside space inside
space...



relationality 关联性



recursion.....→ street?

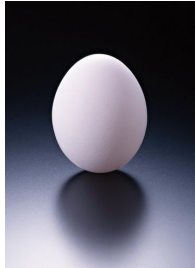


transform

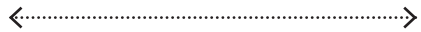
street> city



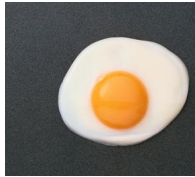
city form



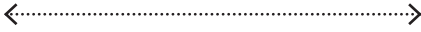
center+wall



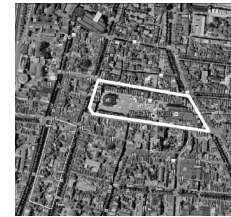
Old city



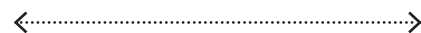
centralized



Delft

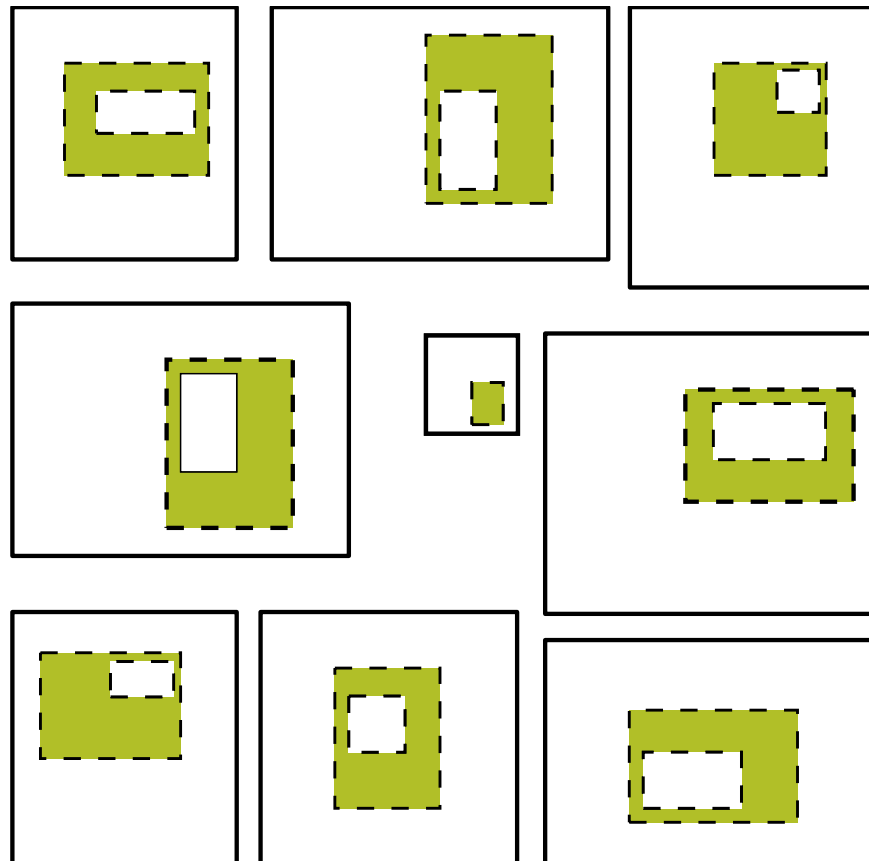


decentralized



BK city

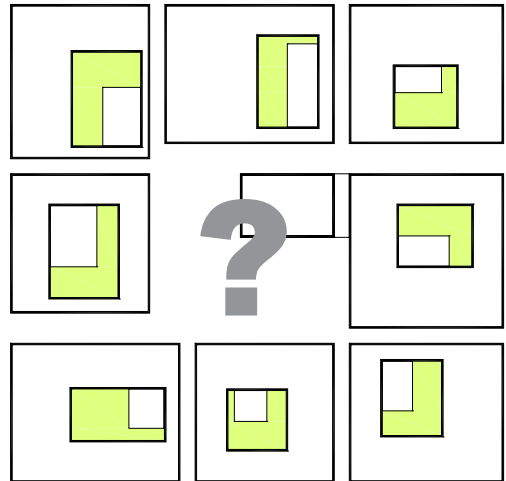




green space inbetween



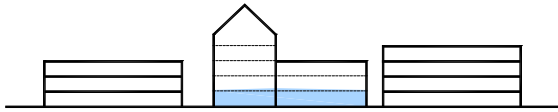
N HOUSE



CENTRAL SPACE?SQUARE?

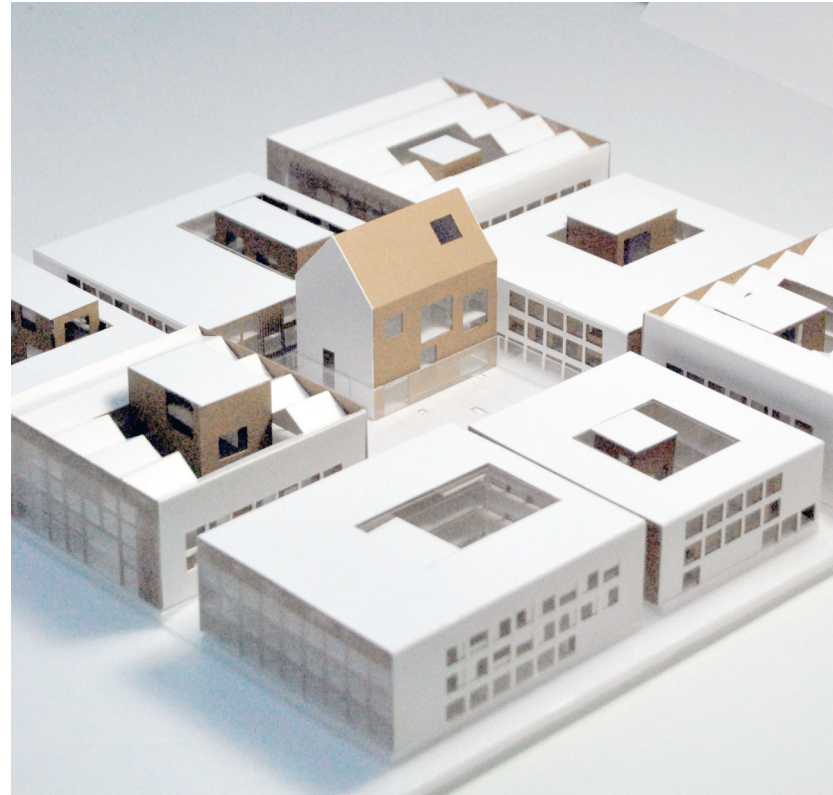
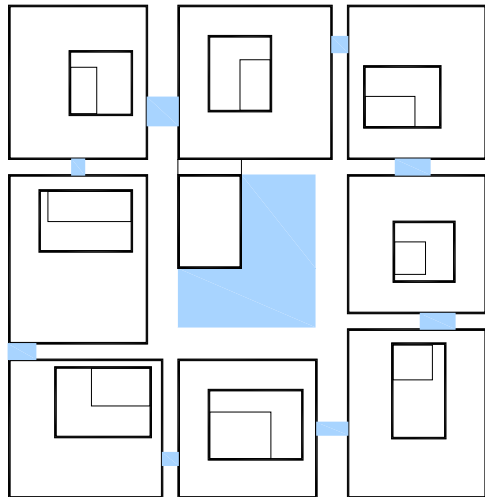
INSIDE SPACE/
SEMI-OUTSIDE/
OUTSIDE SPACE/

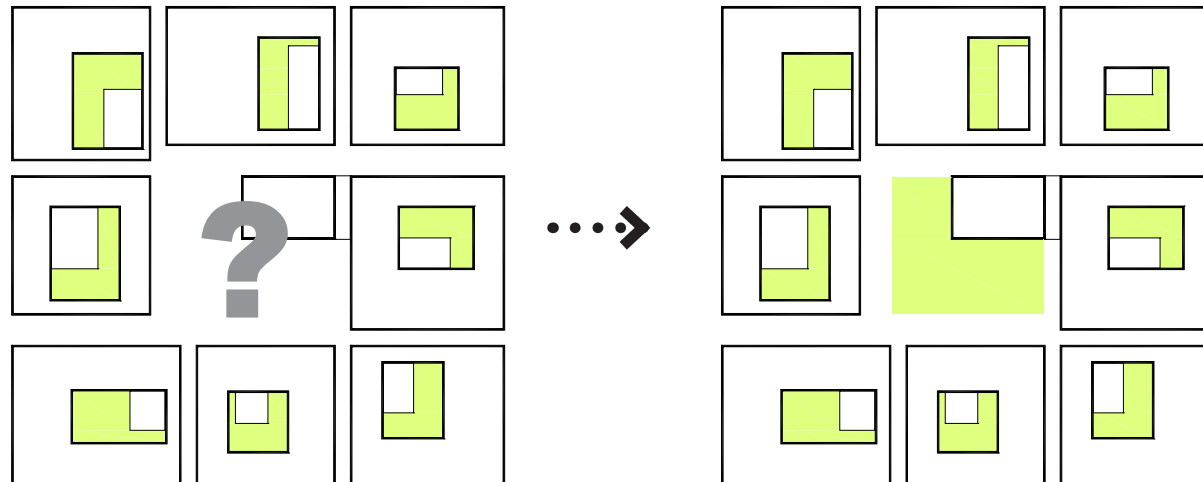
.....
HOW?



seperate object
(central cover only)

level= 5 m





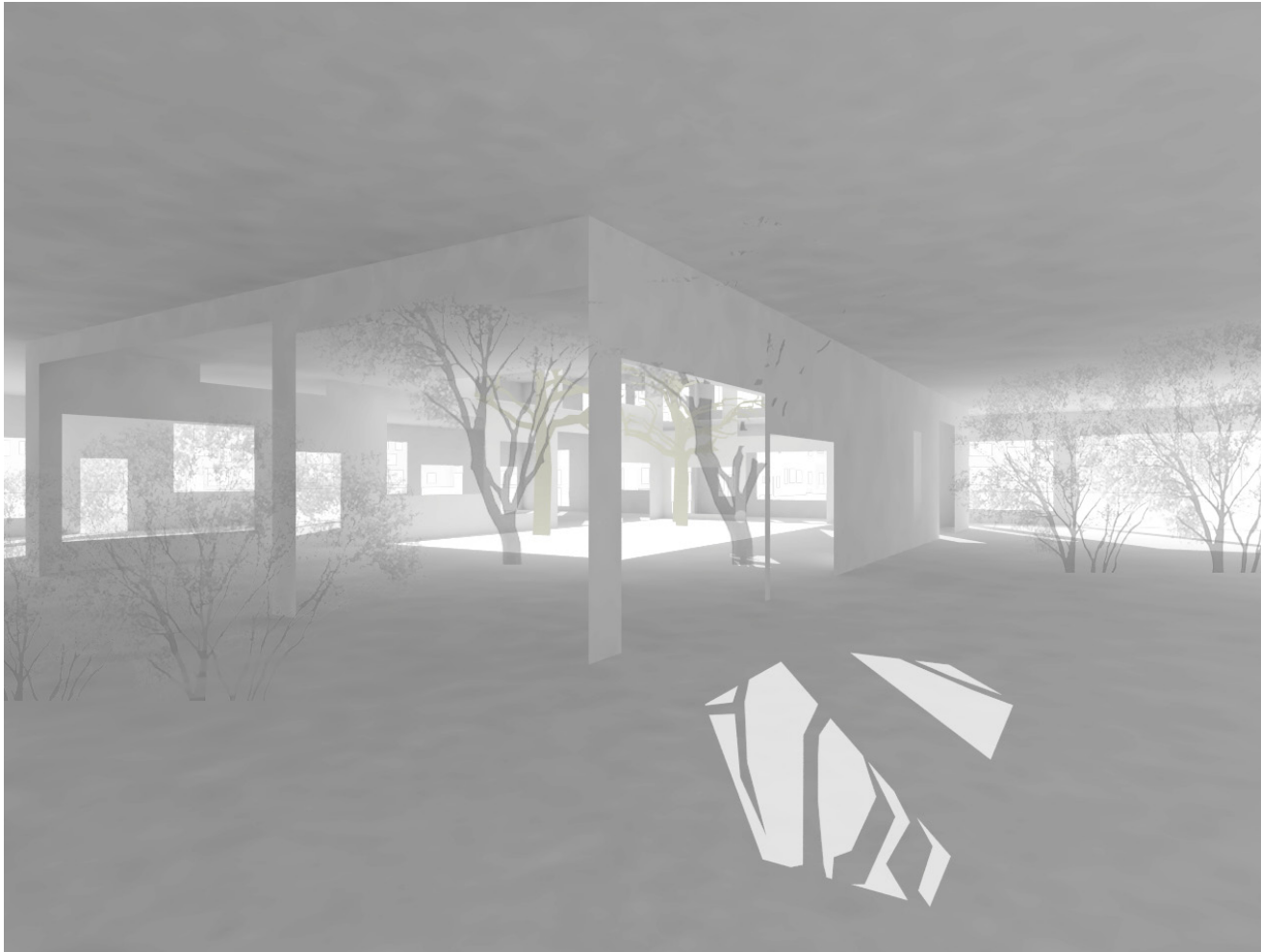
central space

for public
invisible volumn
semi-outside
planting

...



INTERIOR SPACE



ENTRANCE HALL



MASTERPLAN

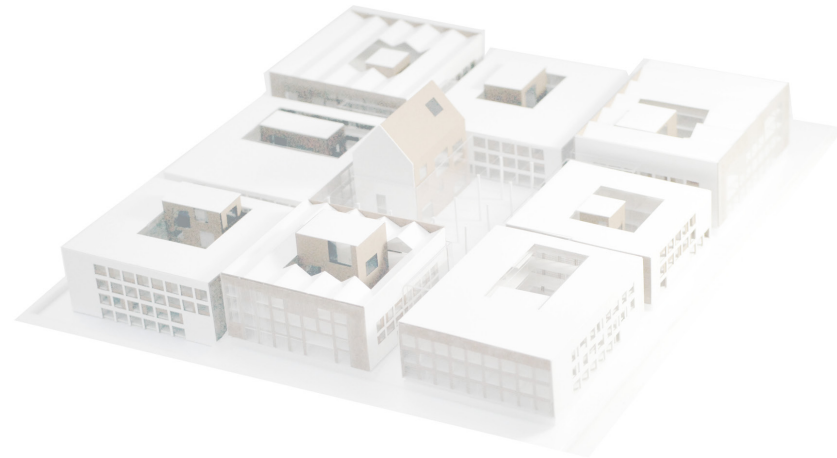
CONCEPT

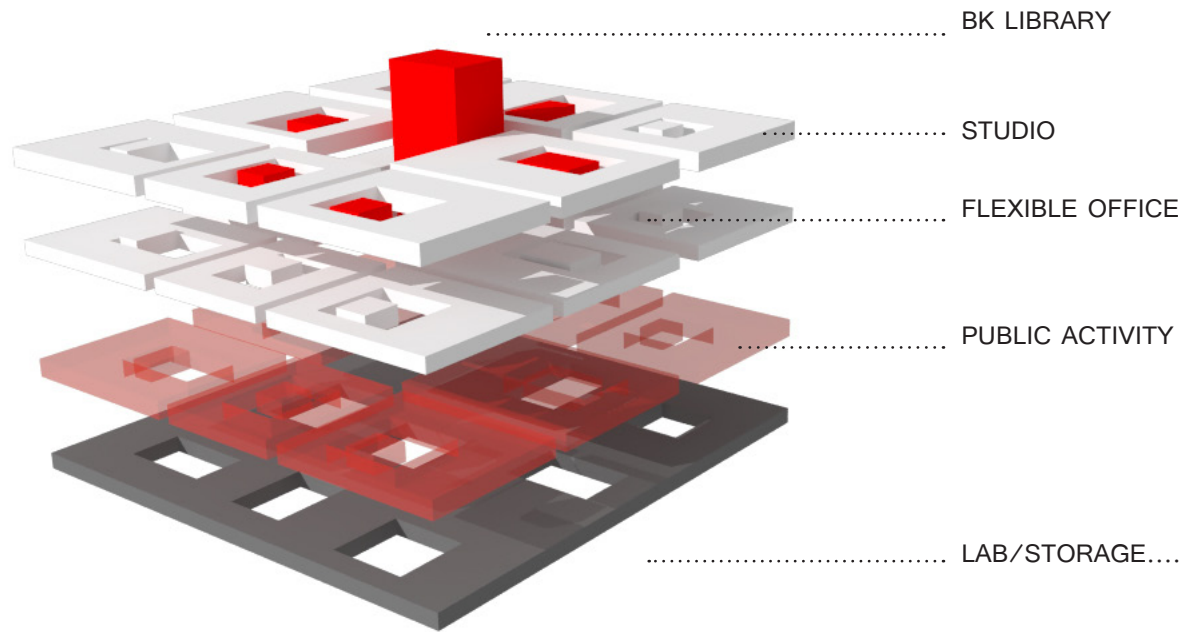
PROGRAM

FACADE

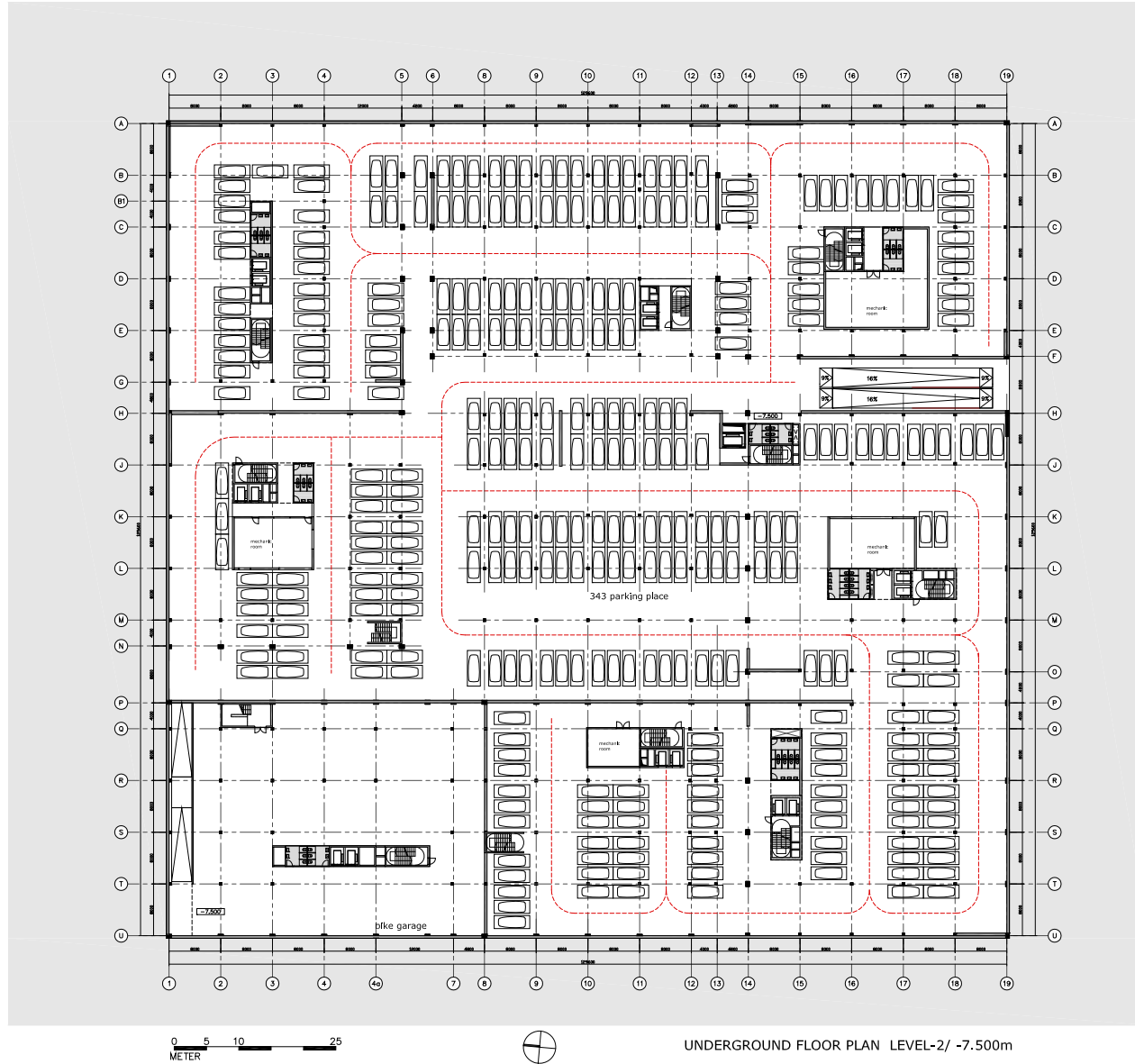
CONSTRUCTION

INTERIOR





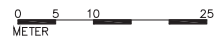
COMPOSITION+ORGANIZATION



UNDERGROUND FLOOR PLAN LEVEL-2/ -7.500m



lab +workshop



UNDERGROUND FLOOR PLAN LEVEL-1/ -4.000m



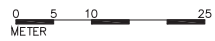
conference center
+
film studio



UNDERGROUND FLOOR PLAN LEVEL-1/ -4.000m



Archive place



UNDERGROUND FLOOR PLAN LEVEL-1/ -4.000m



plantroom
+
storage CSU

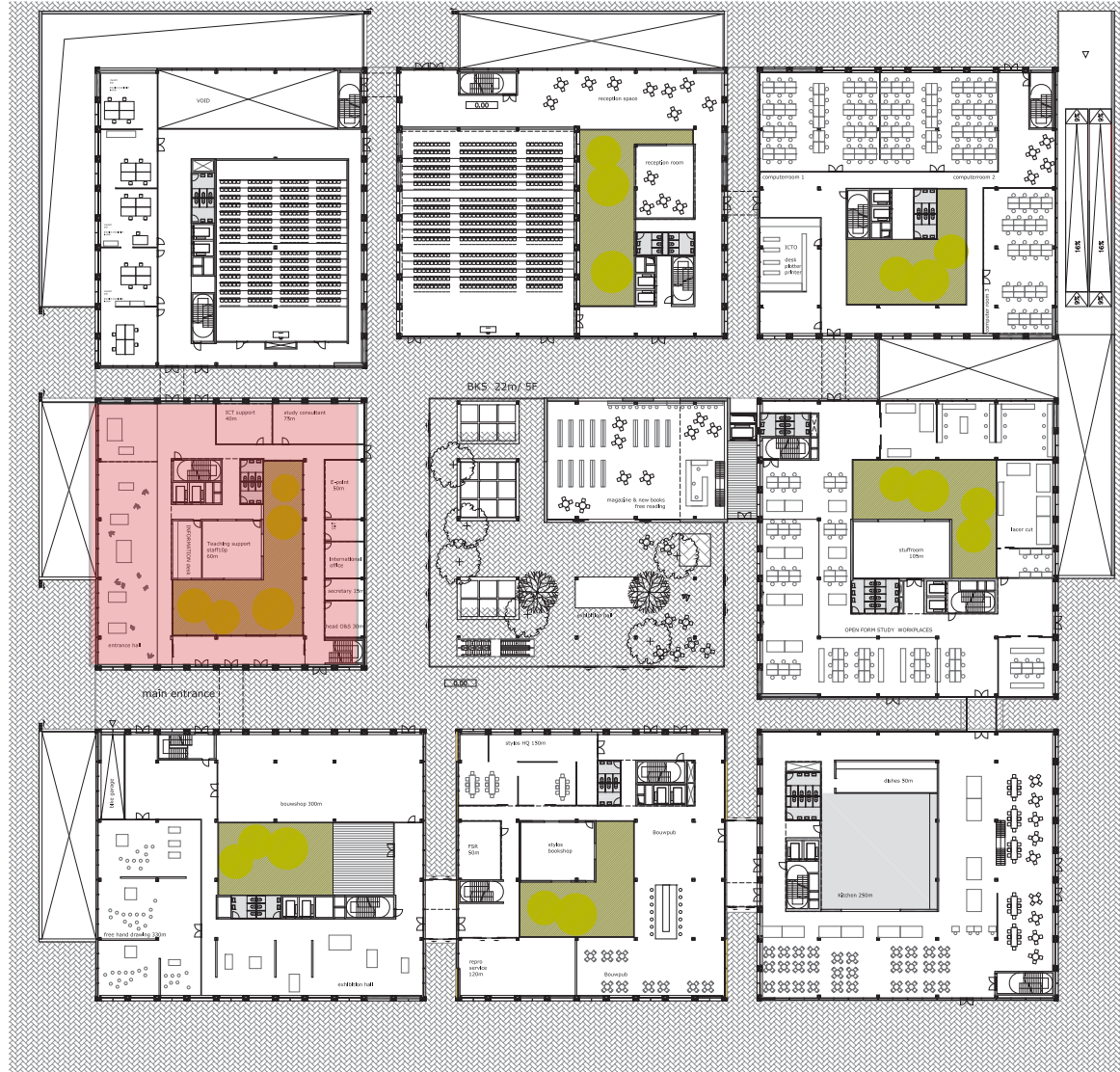
delievery



UNDERGROUND FLOOR PLAN LEVEL-1/ -4.000m

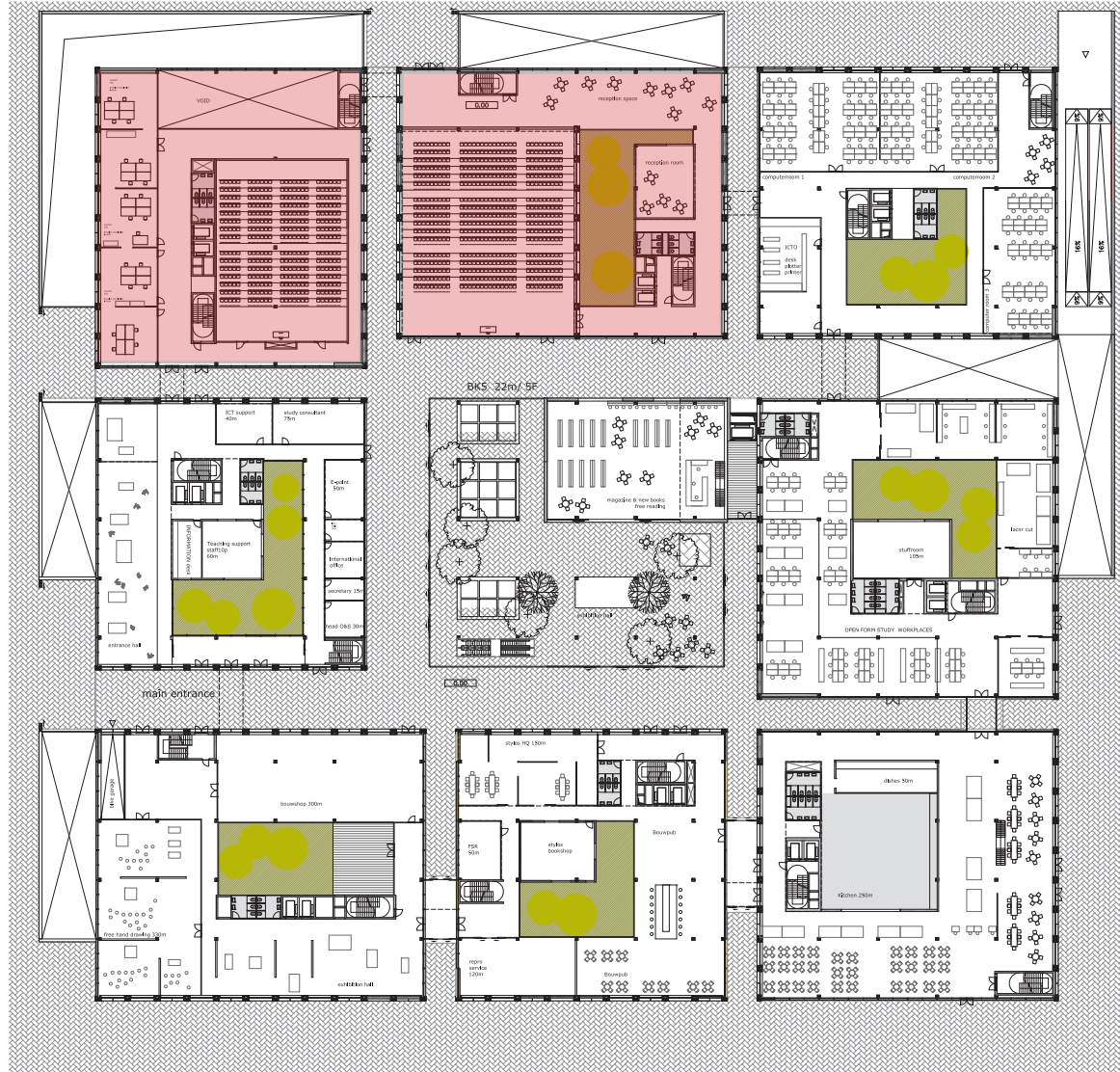


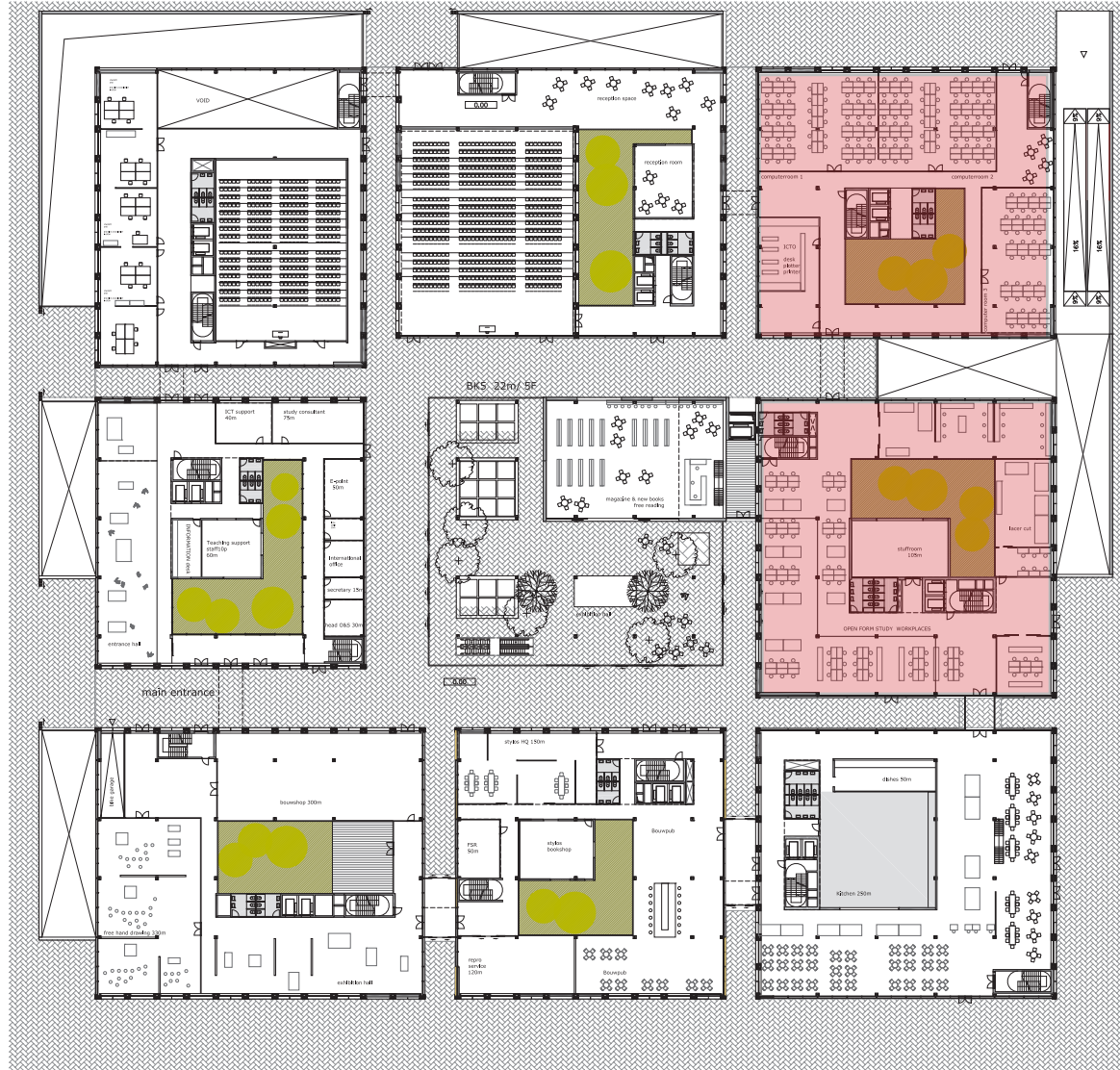
entrance hall
+
information center





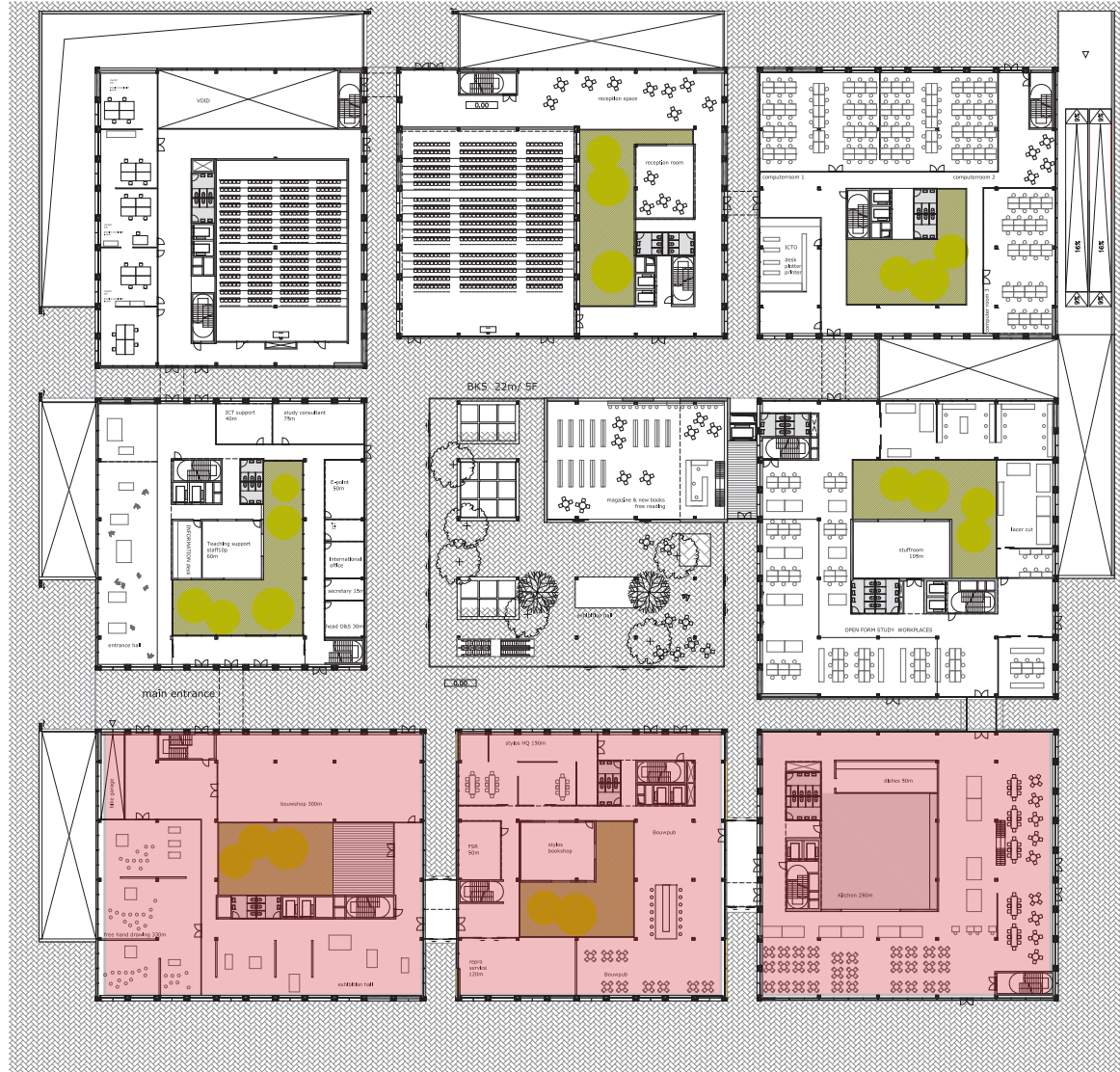
Big Auditorium
room A
+
room B





computer
rooms

model
workshop
+
laser lab



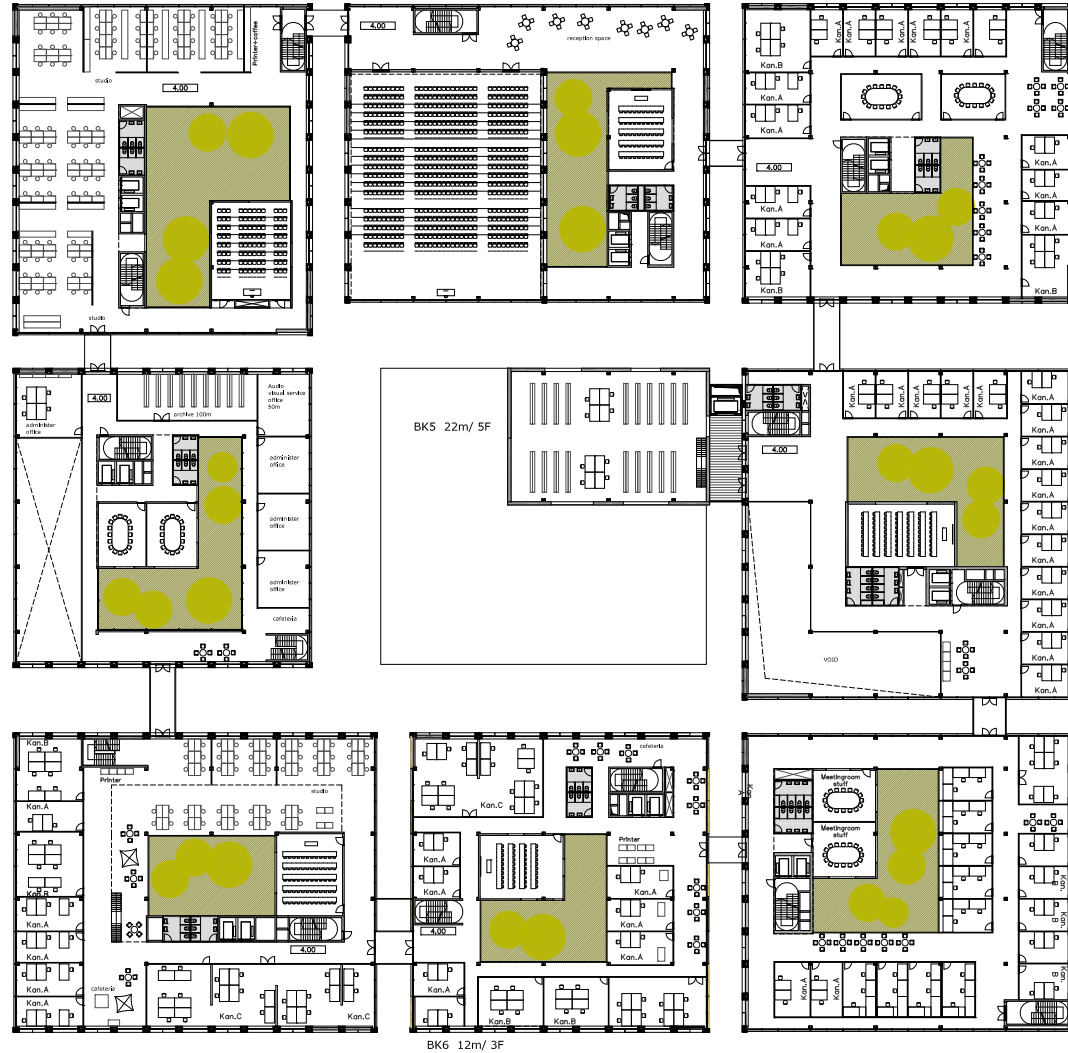
Bouwshop
+
exhibition

Bouw pub
+
Bouw
restaurant



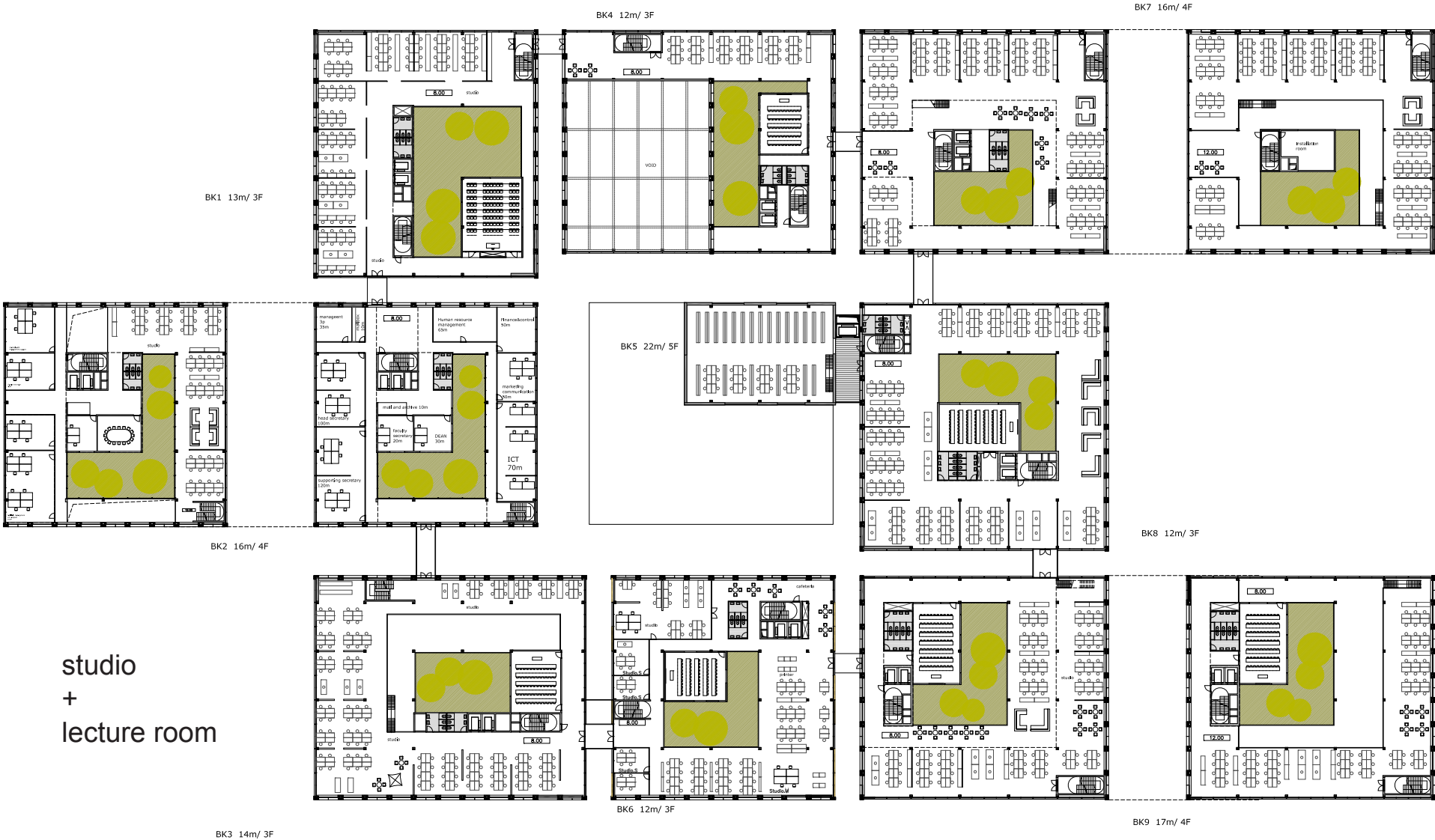
Library
+
exhibition hall





office
+
part studio

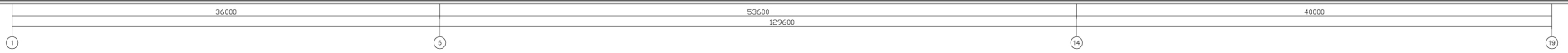
FLOOR PLAN1 LEVEL 1 /4,000m



studio
+
lecture room

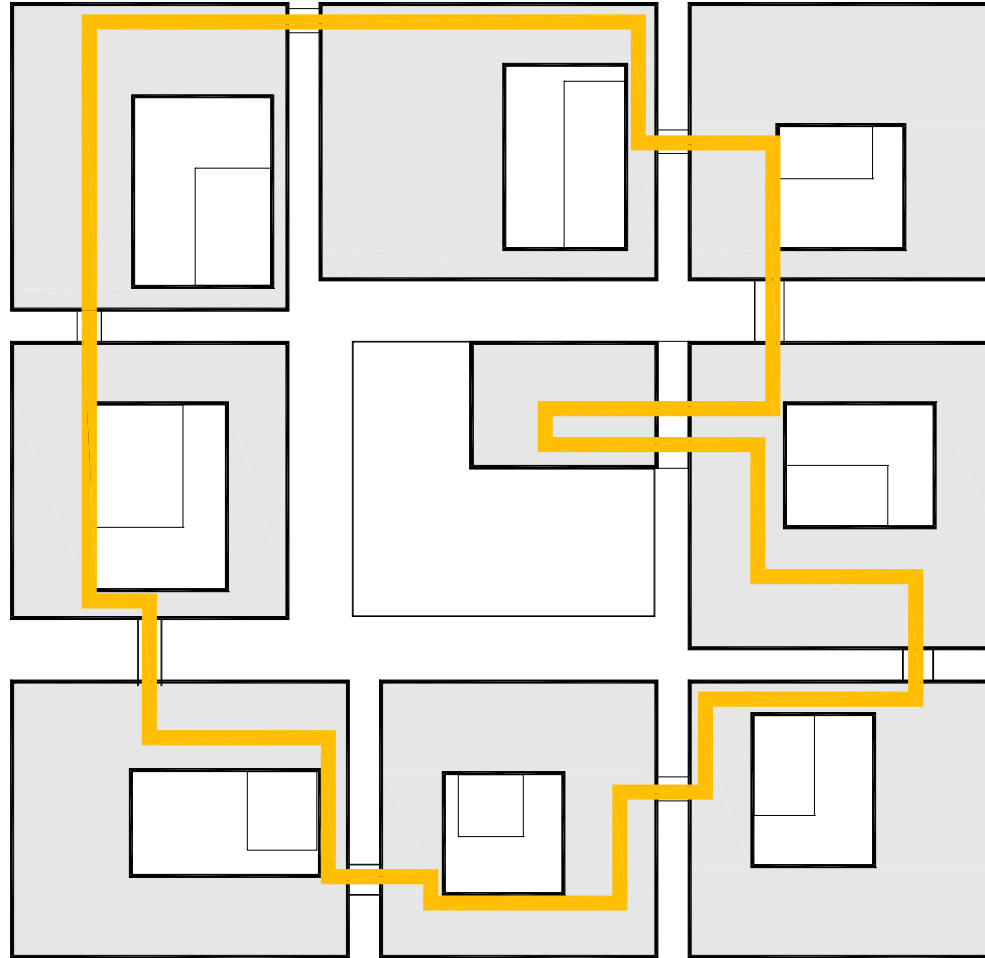


FLOOR PLAN 2-3 LEVEL 2-3 / 8.000m-12m



SECTION AA







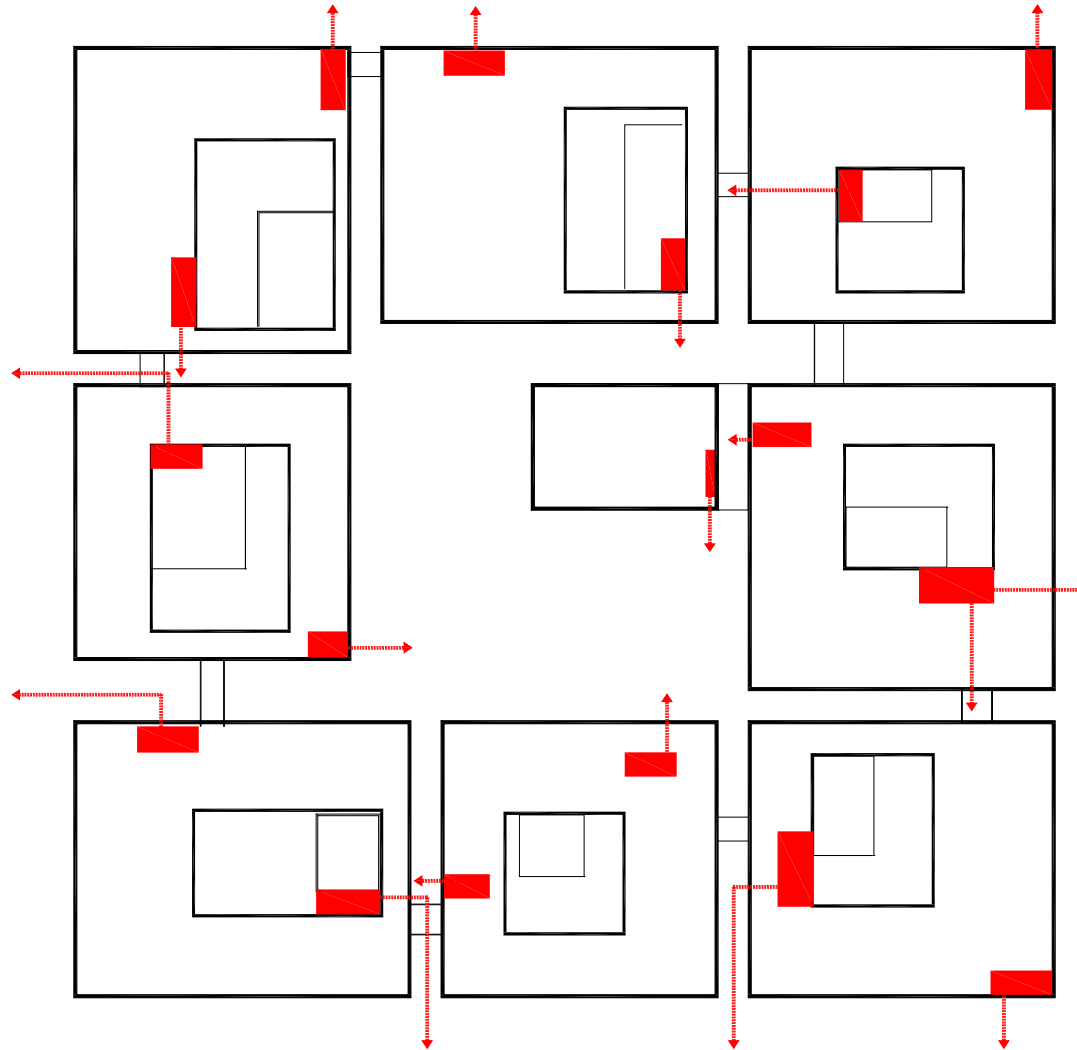
security route
fire escape



security route
fire escape



security route
fire escape



security route
fire escape



MASTERPLAN

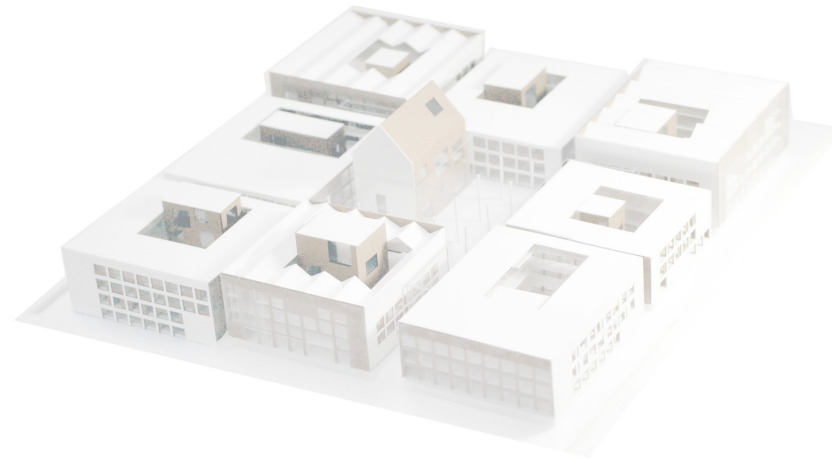
CONCEPT

PROGRAM

FACADE

CONSTRUCTION

INTERIOR





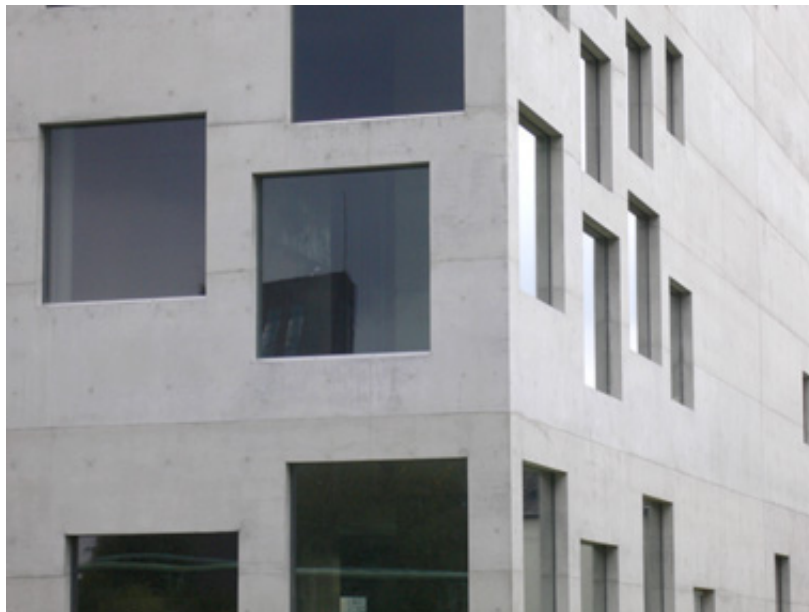
EXTERIOR

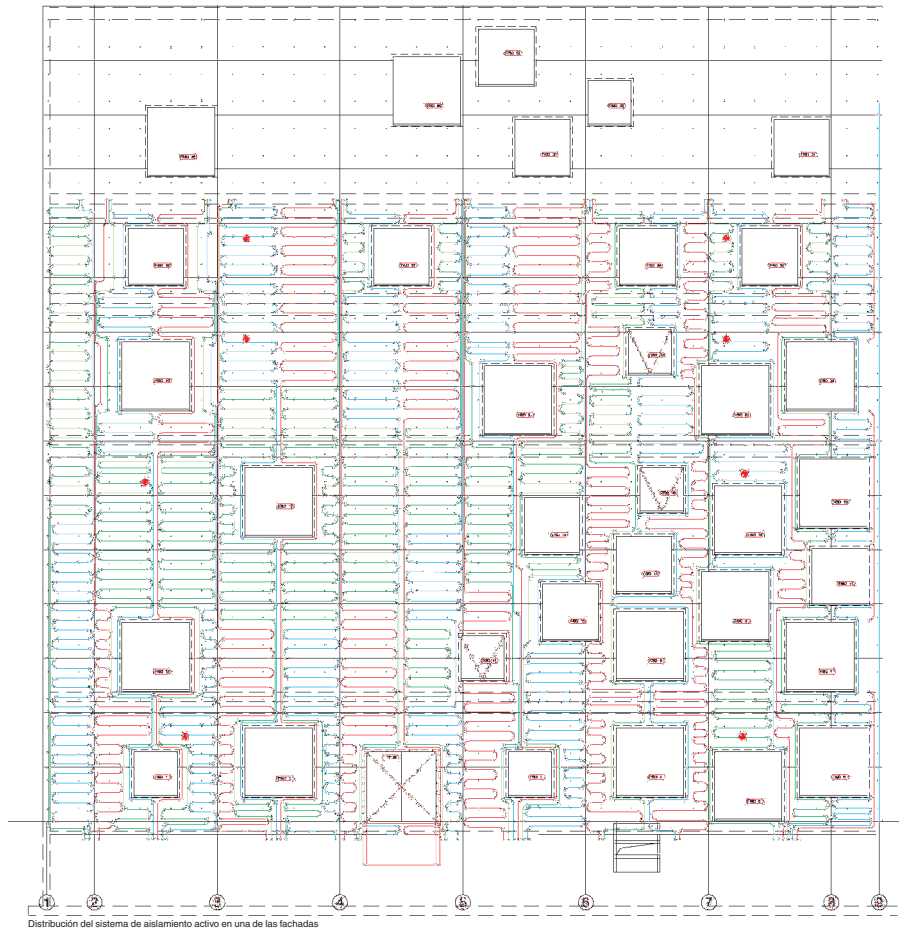
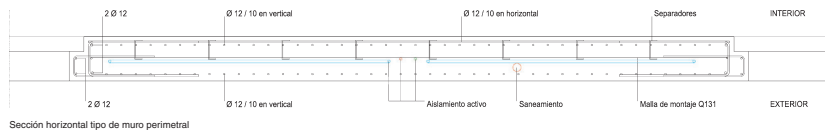


BK IMPRESSION



SANAA Zollverein School (Essen, Germany)

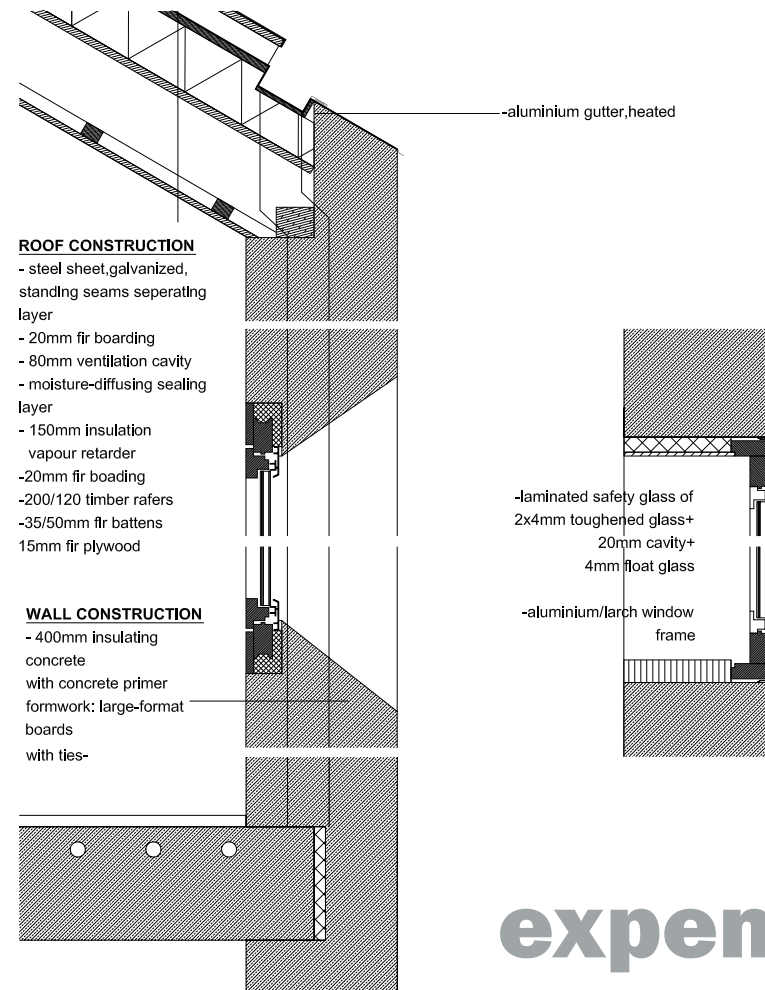




energy free!

- free energy resource from underground
- mine water (polluted)
- no insulation

- 300mm insitu concrete facade
- 70% energy lost into air



expensive!

Haus Presenhuber, Vnà/
Gabrielle Hächler & Andreas
Fuhrmann



SEIJO TOWN HOUSE/SANAA

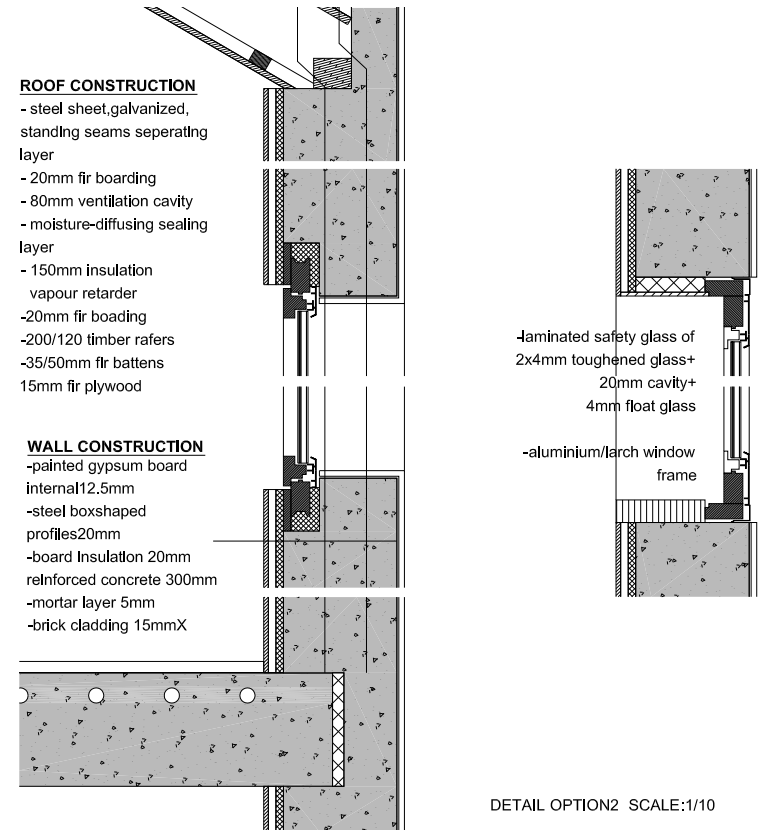
no insulation!

ROOF CONSTRUCTION

- steel sheet,galvanized, standing seams seperating layer
- 20mm fir boarding
- 80mm ventilation cavity
- moisture-diffusing sealing layer
- 150mm insulation vapour retarder
- 20mm fir boarding
- 200/120 timber rafers
- 35/50mm fir battens
- 15mm fir plywood

WALL CONSTRUCTION

- painted gypsum board internal12.5mm
- steel boxshaped profiles20mm
- board Insulation 20mm
- reinforced concrete 300mm
- mortar layer 5mm
- brick cladding 15mmX



DETAIL OPTION2 SCALE:1/10



N House , by Sou Fujimoto, Tokyo



Small scale building





X

RANDOM OPENINGS
BIG SCALE BUILDING
ONE DETAIL EVERY WHERE
IN SITU CONCRETE IS NOT GOOD SOLUTION
....HOW?





! INSPIRATION

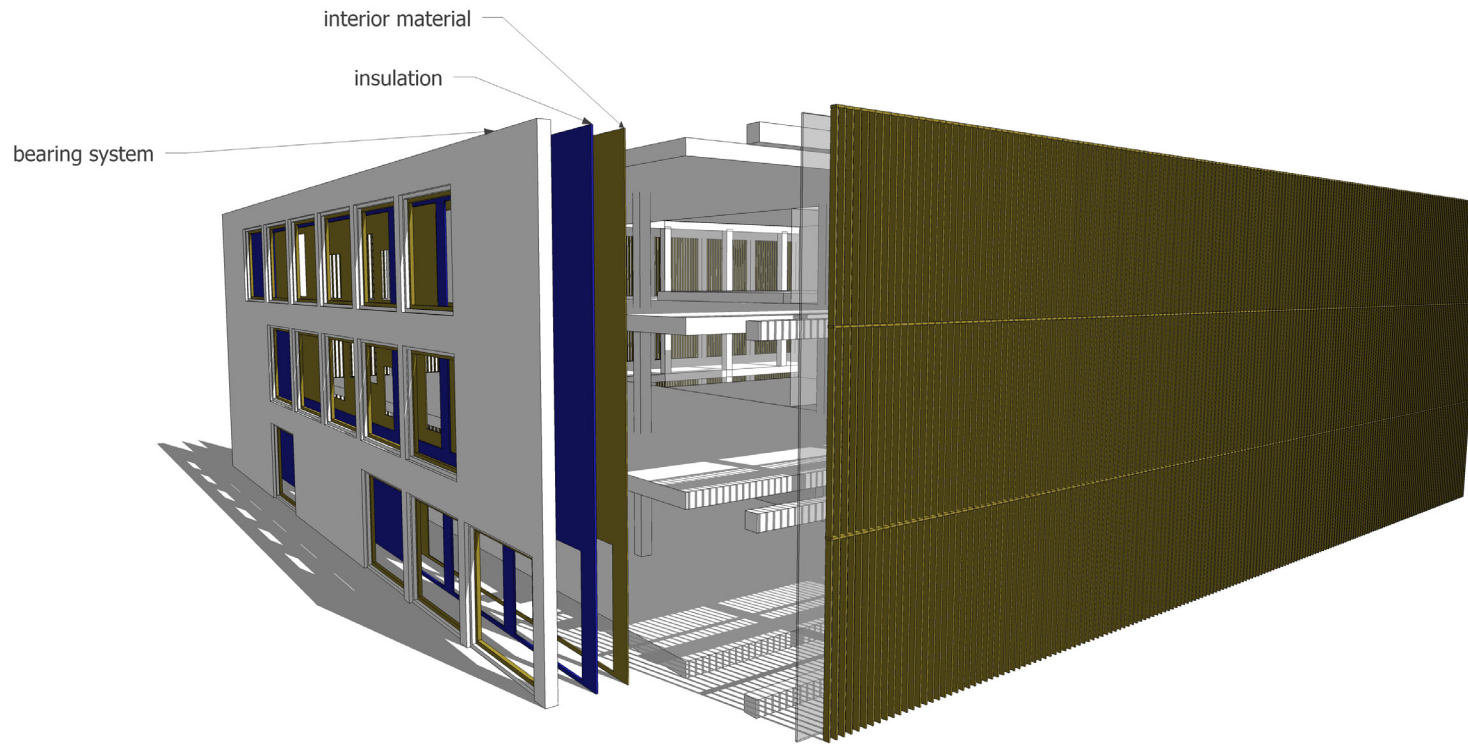


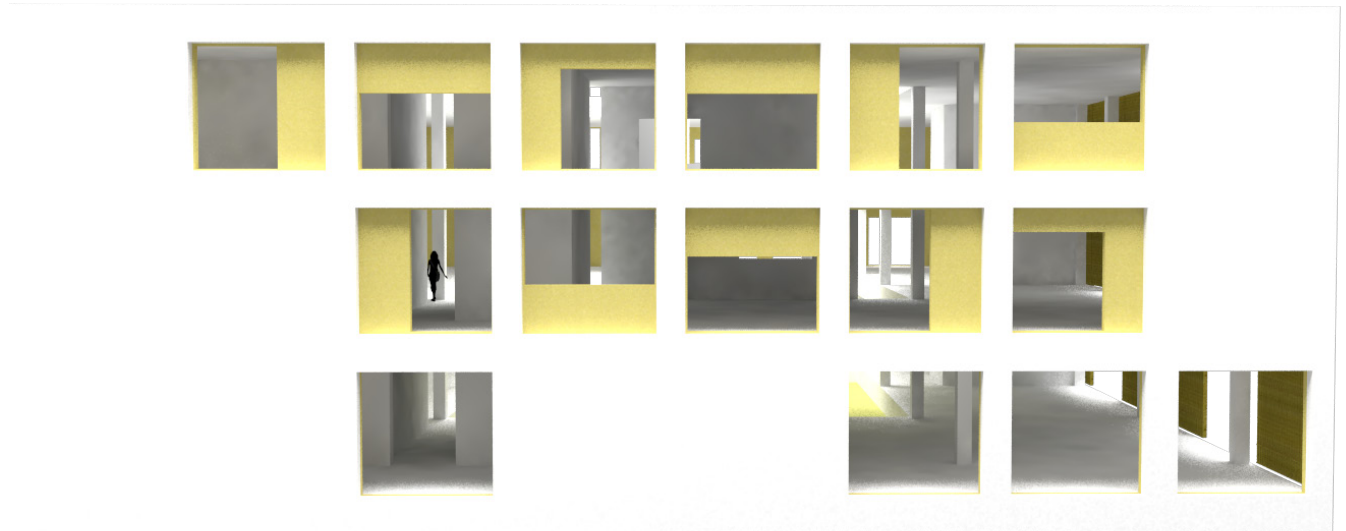
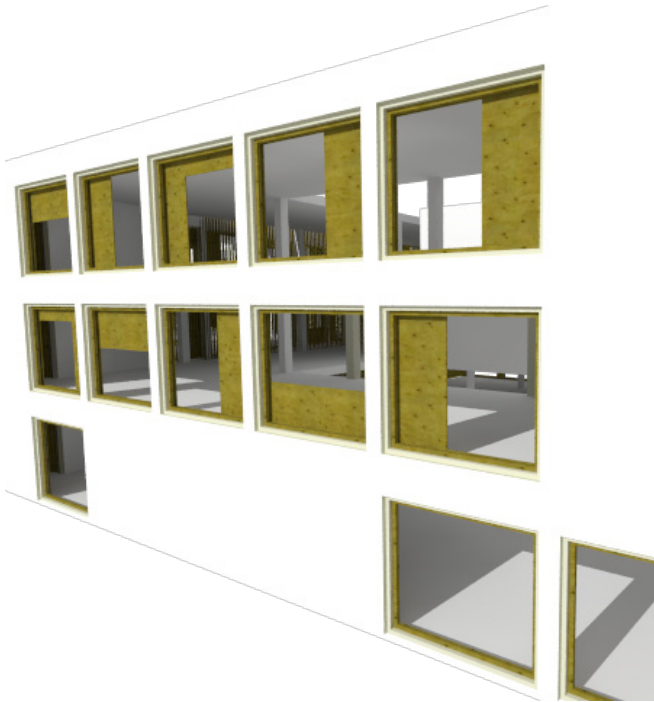
MGM social housing in the Monte Hacho



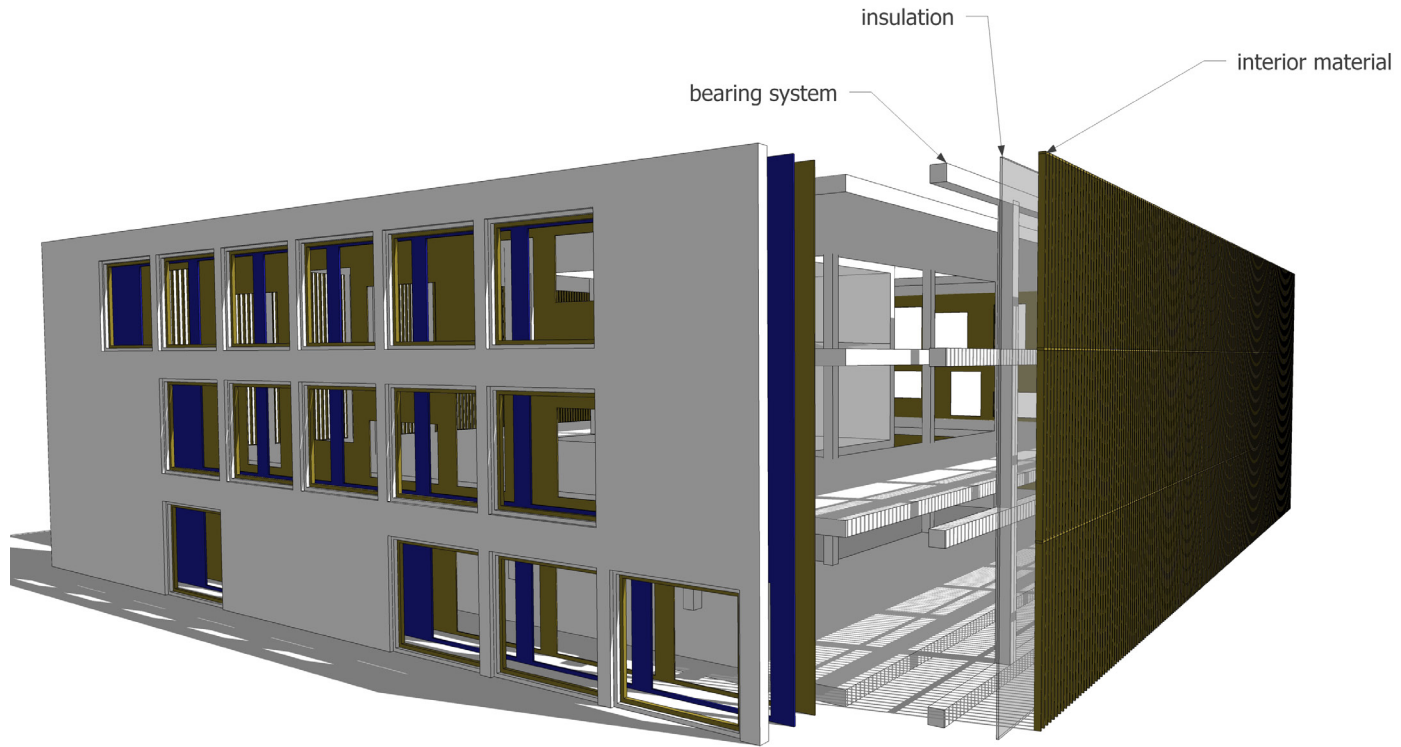


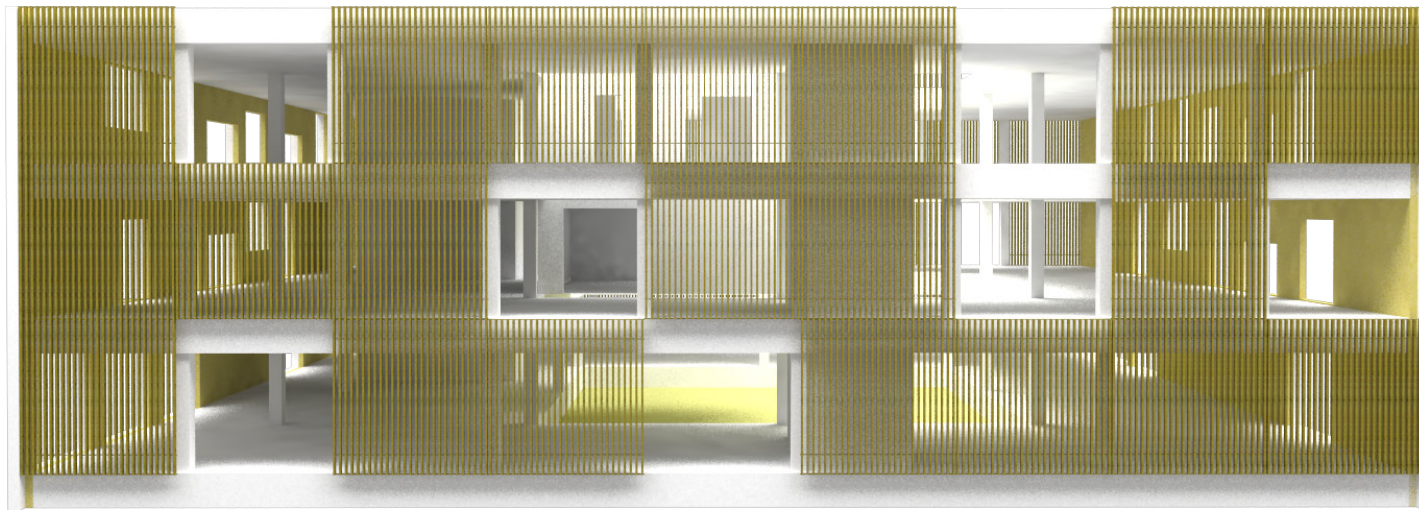
mixed these two systems



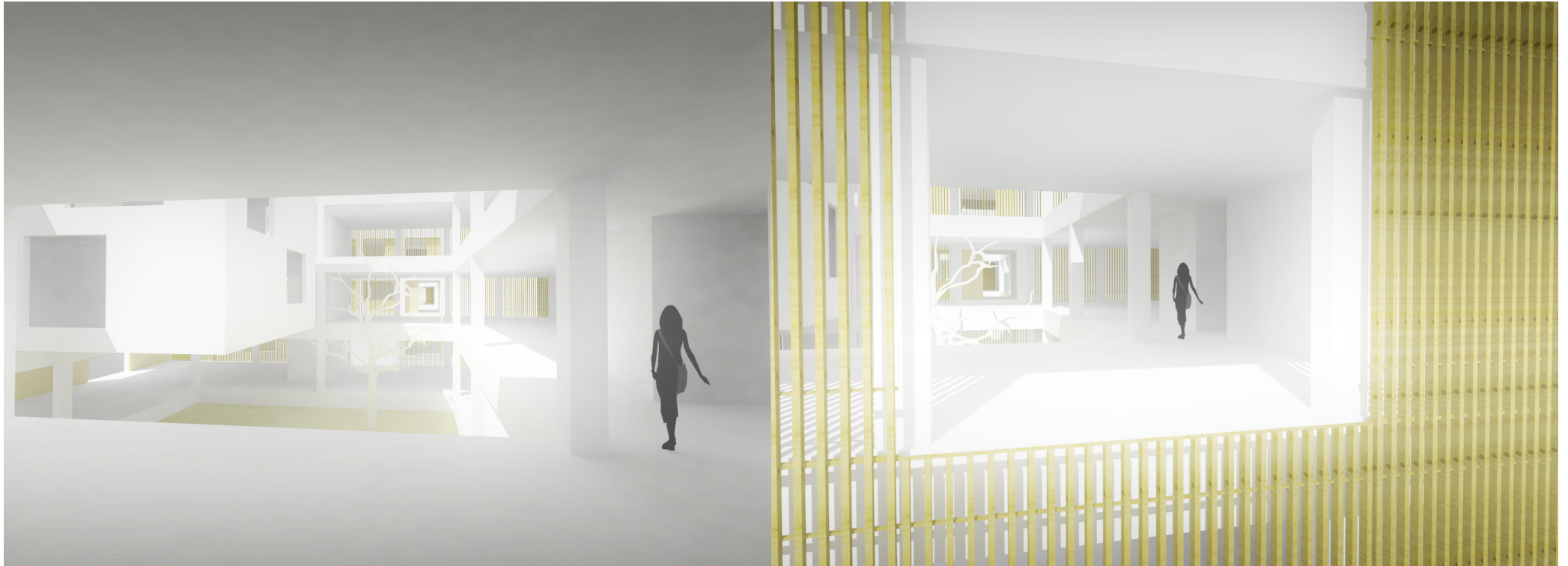


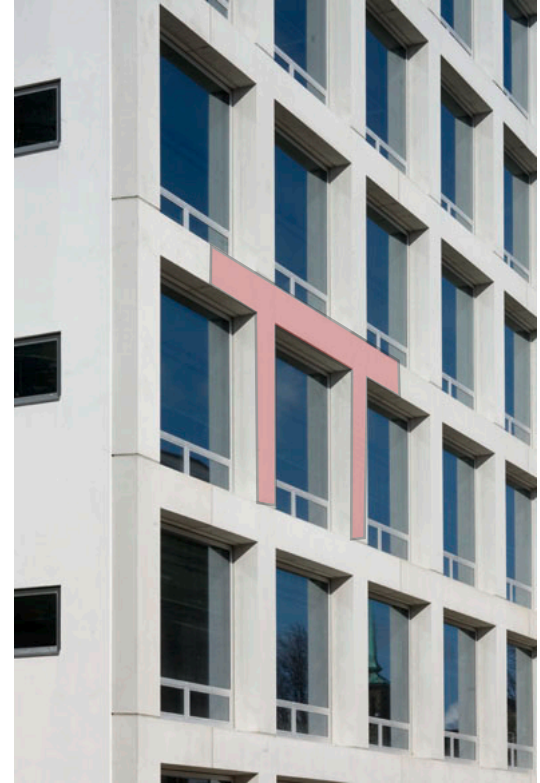
solid facade---bearing system outside, rigid,strong



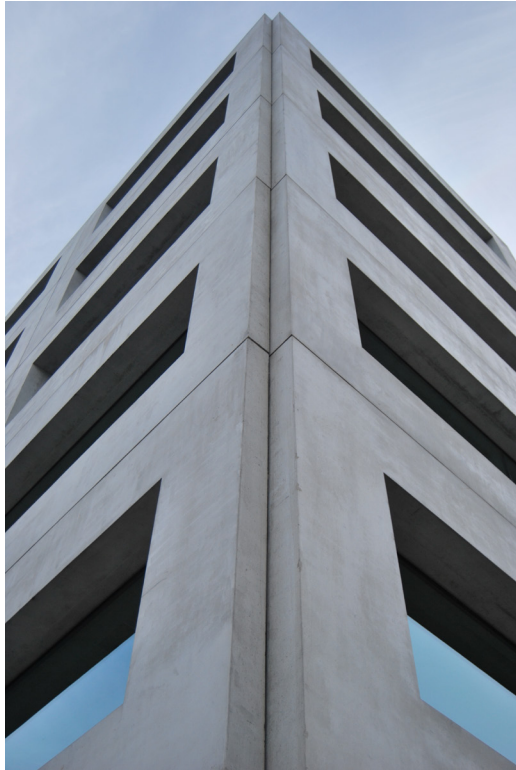


soft facade---bearing system in side, transparent

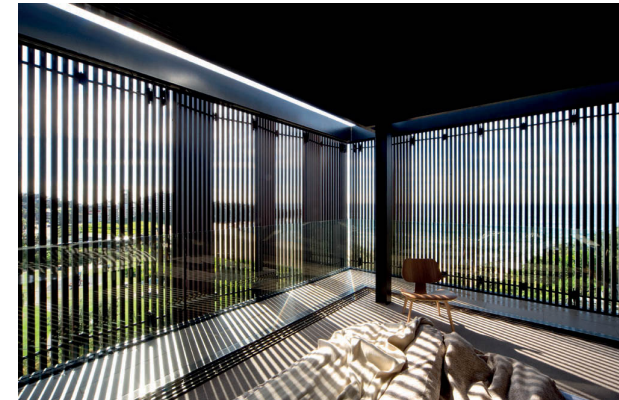




Stadsdeelkantoor
ZuiderAmstel Amsterdam



Office building in Ijburg, Amsterdam
Claus en Kaan Architecten



Jiushu residential house, China
David Chipperfield



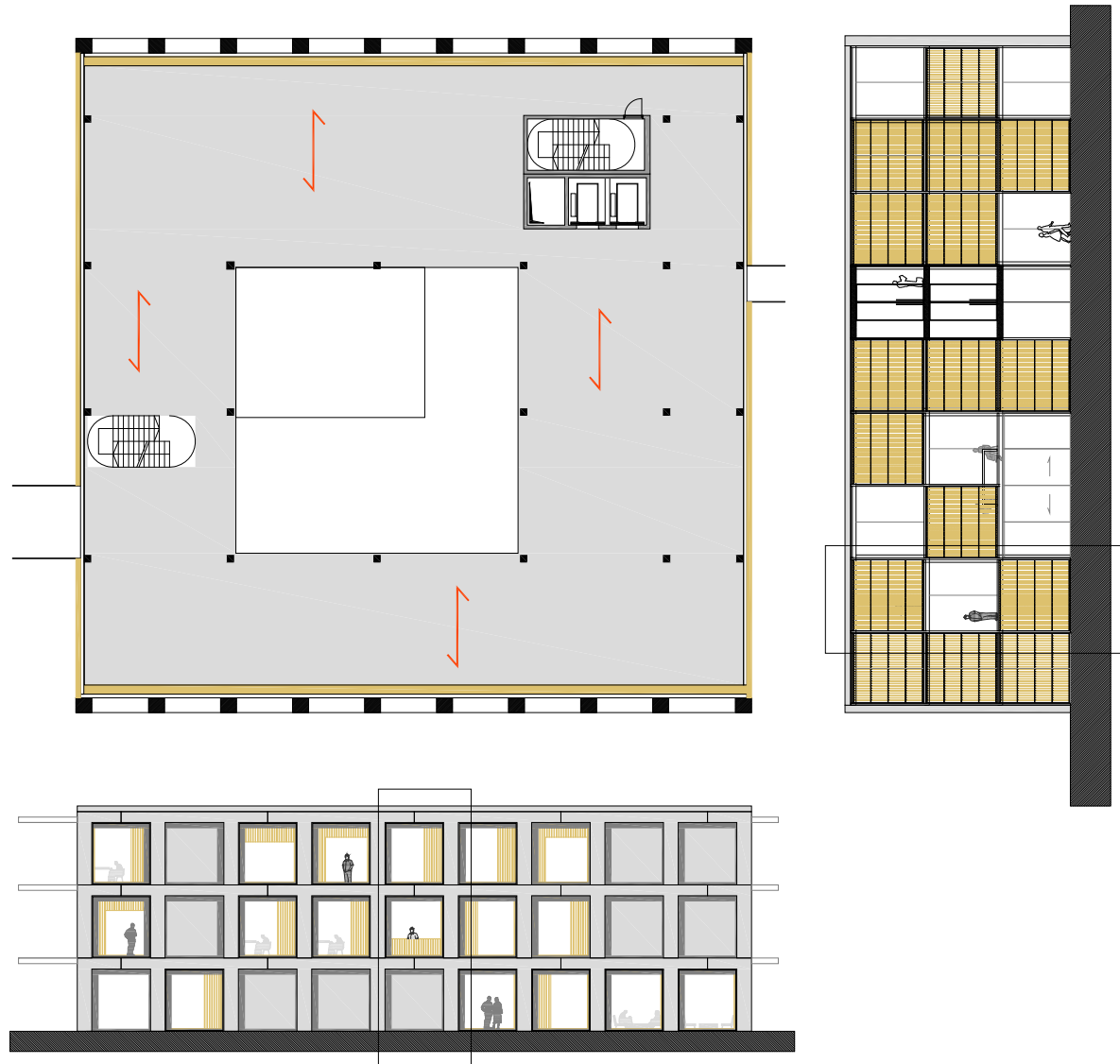
Jiushu residential house, China
David Chipperfield

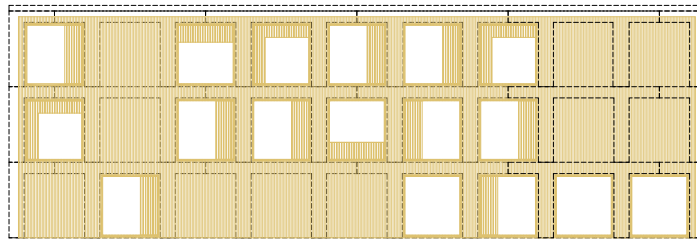


Architecture school,Umea



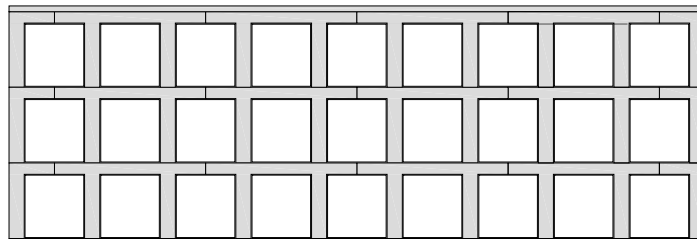






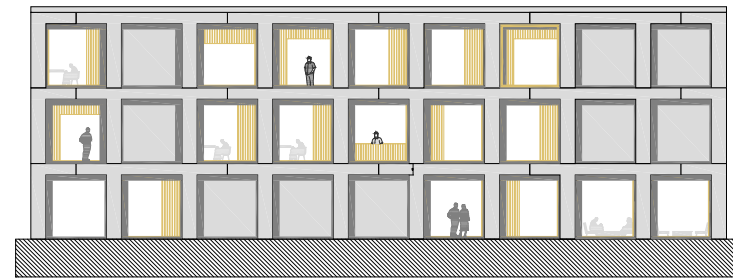
interior wooden cladding layer

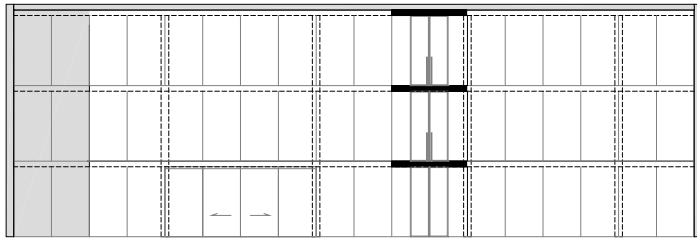
+



outside loadbearing frame element

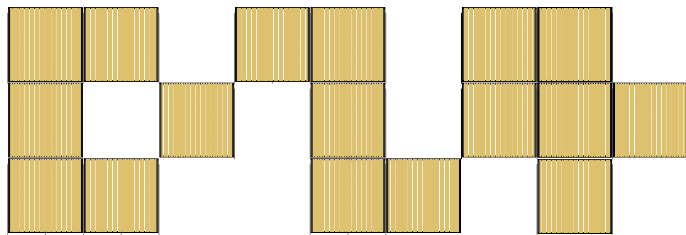
=





inside column frame and glass

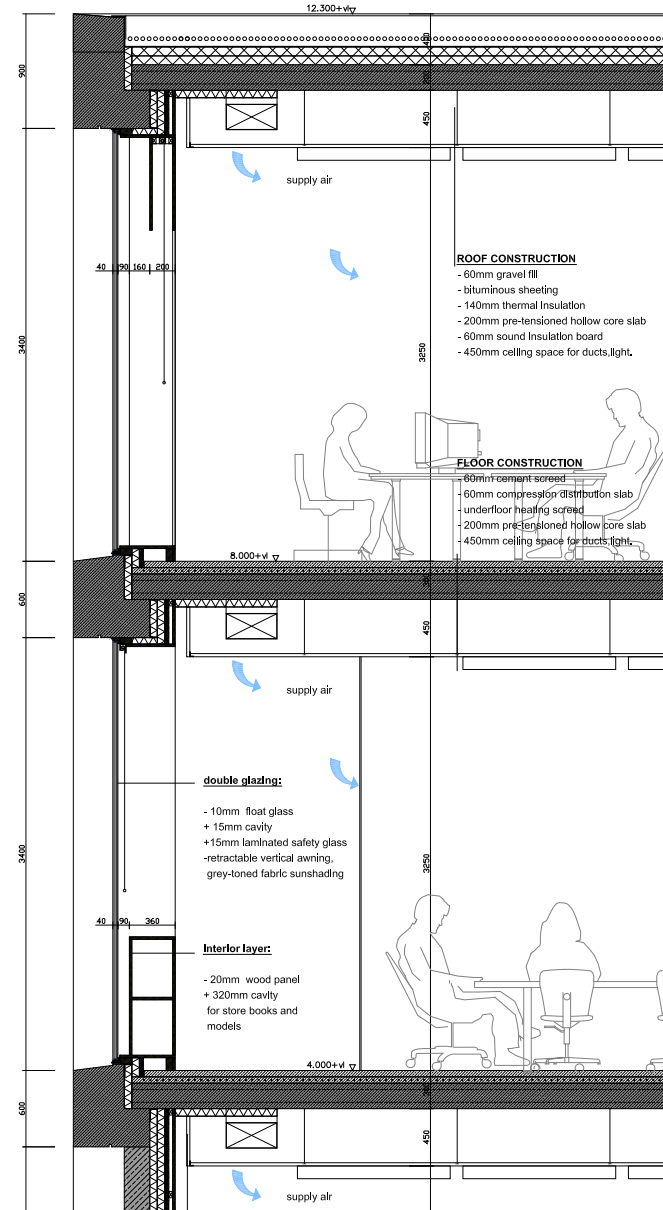
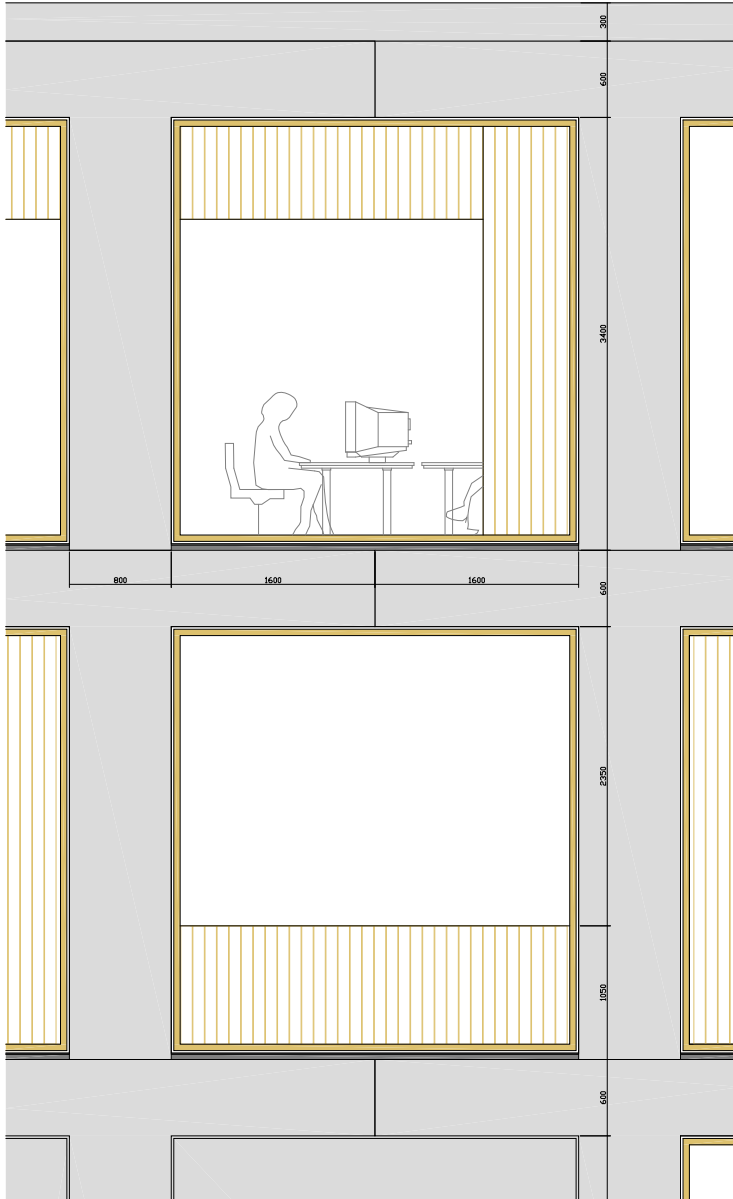
+

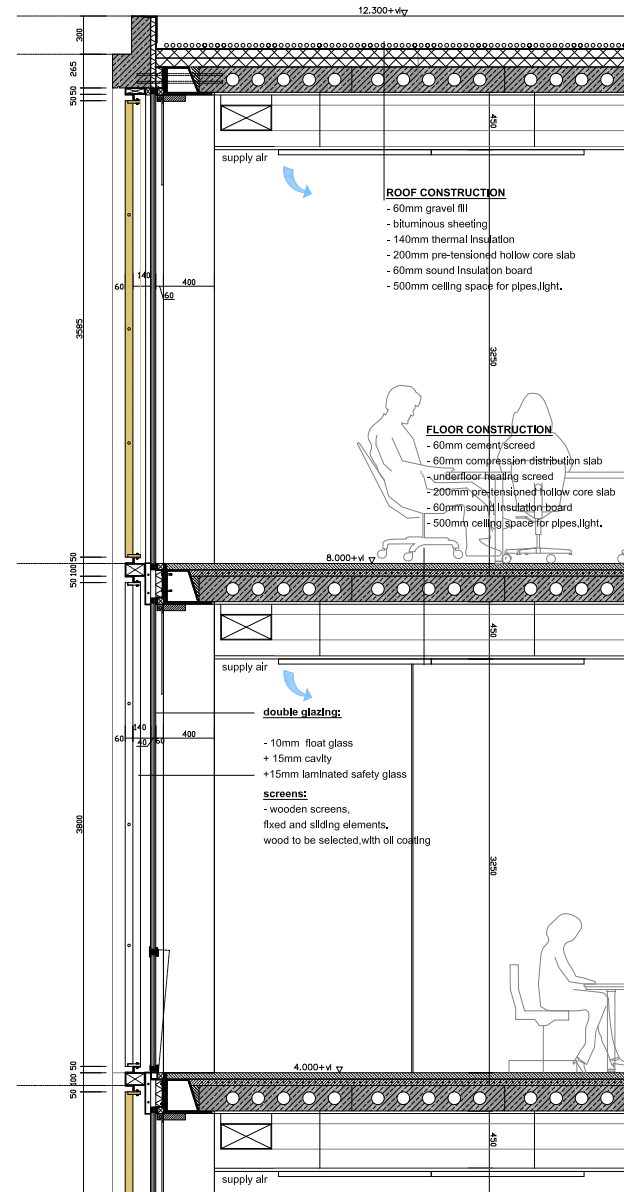
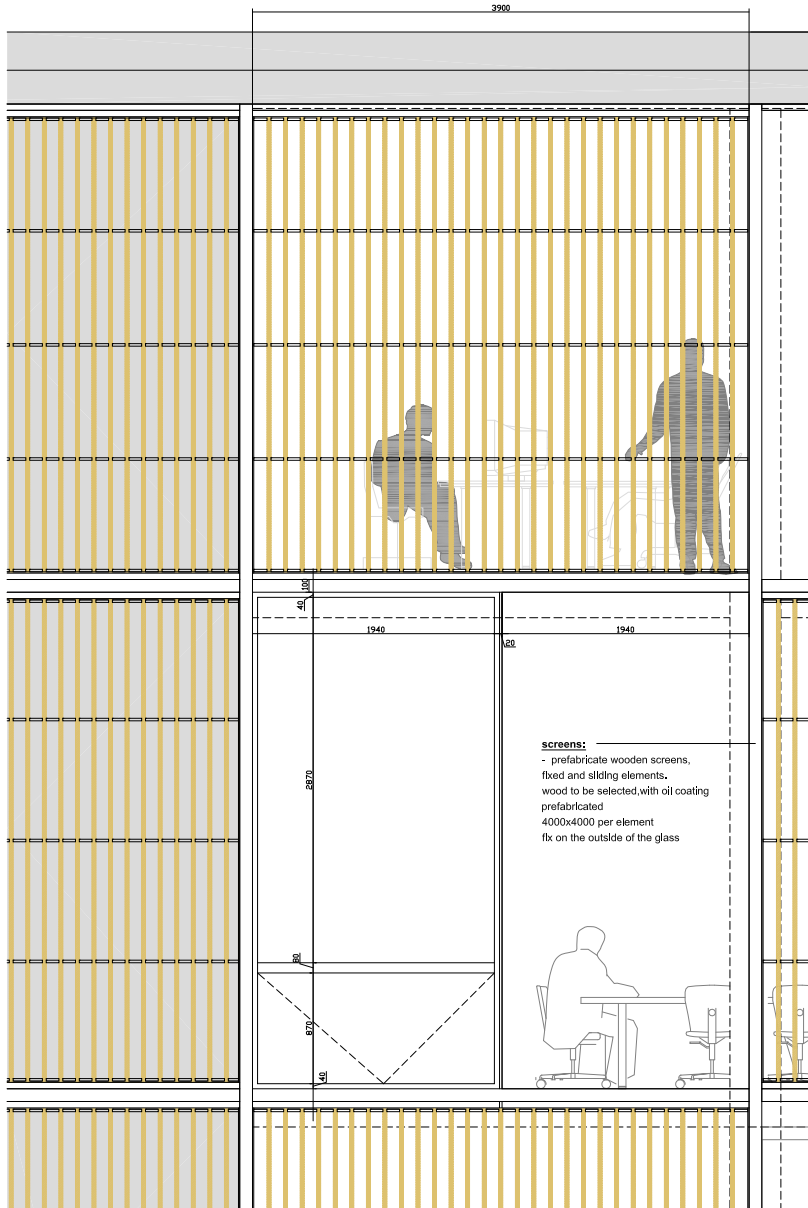


outside wooden louver layer

=









MASTERPLAN

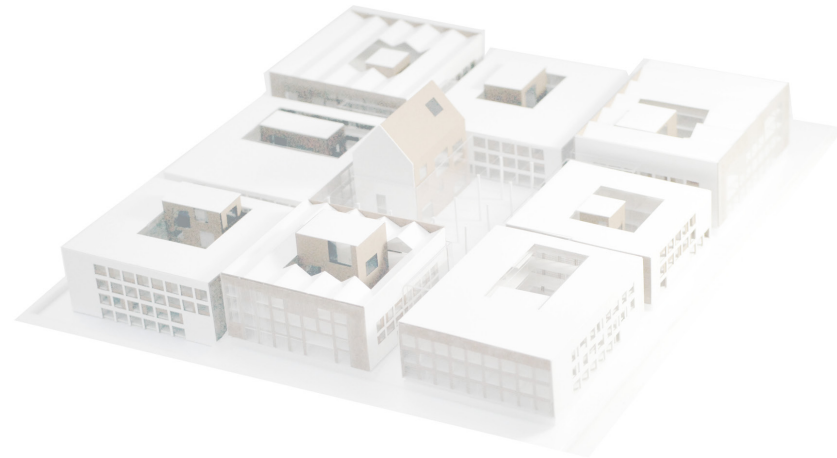
CONCEPT

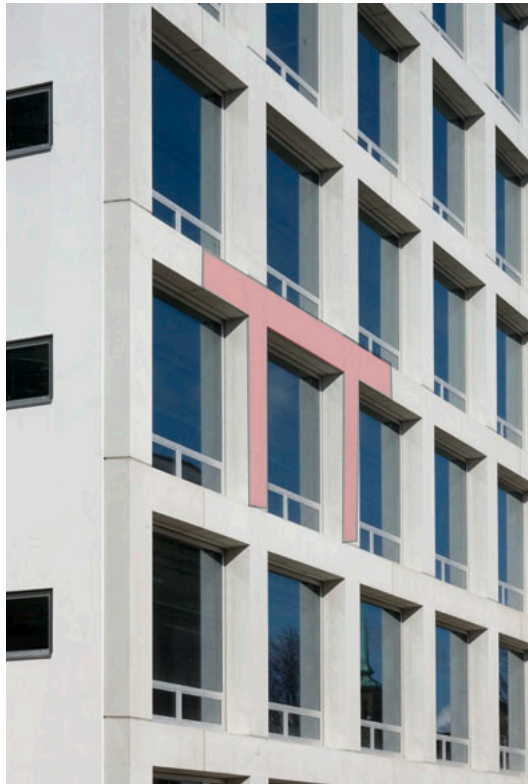
PROGRAM

FACADE

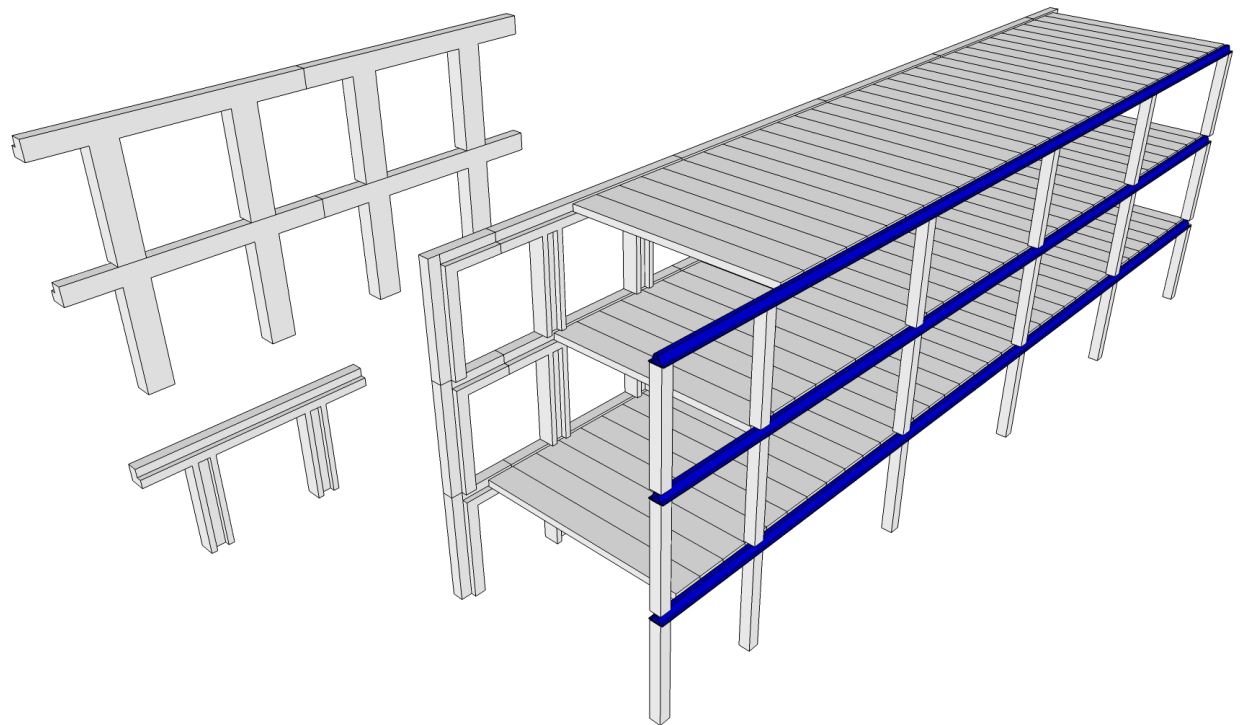
CONSTRUCTION

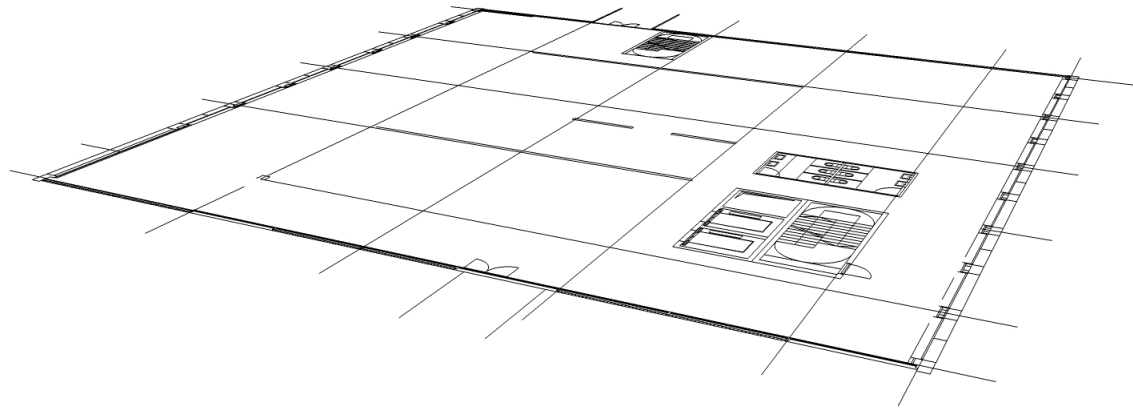
INTERIOR

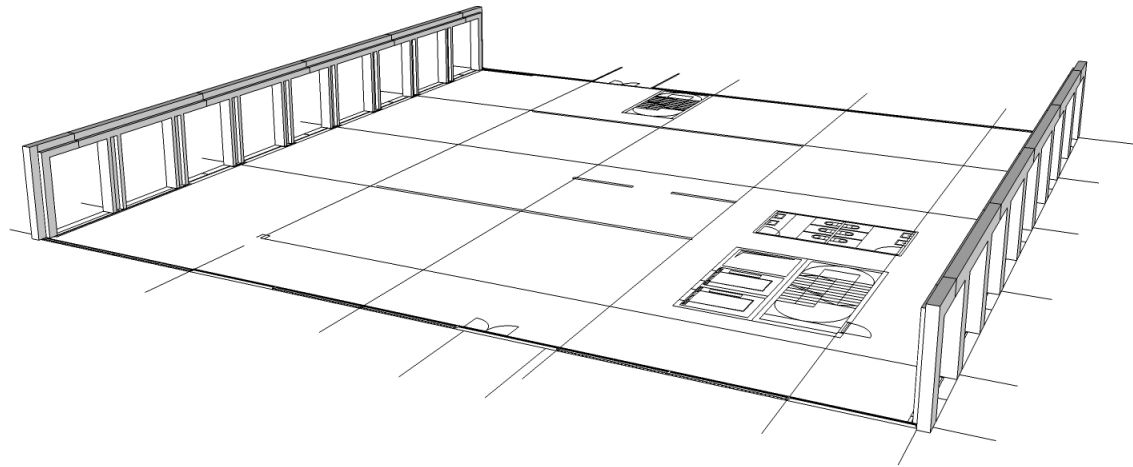


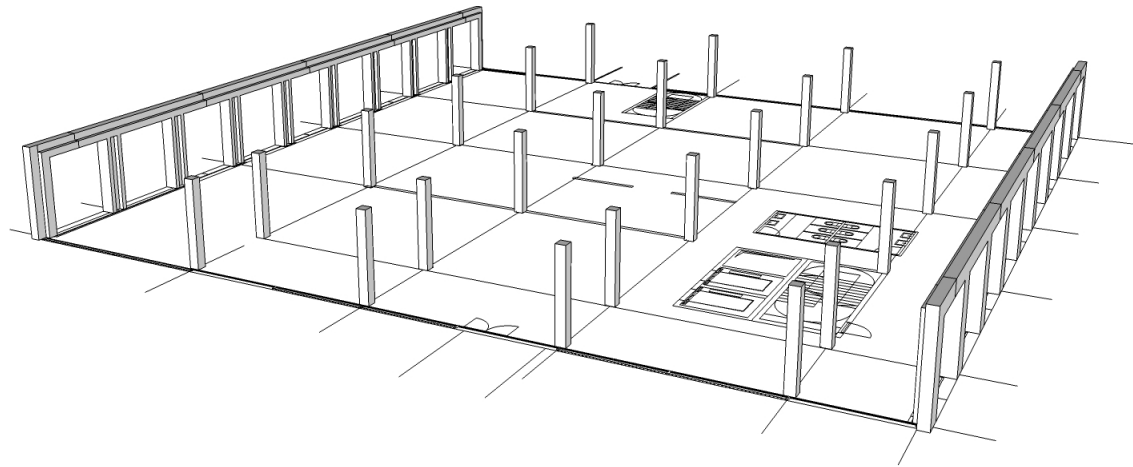


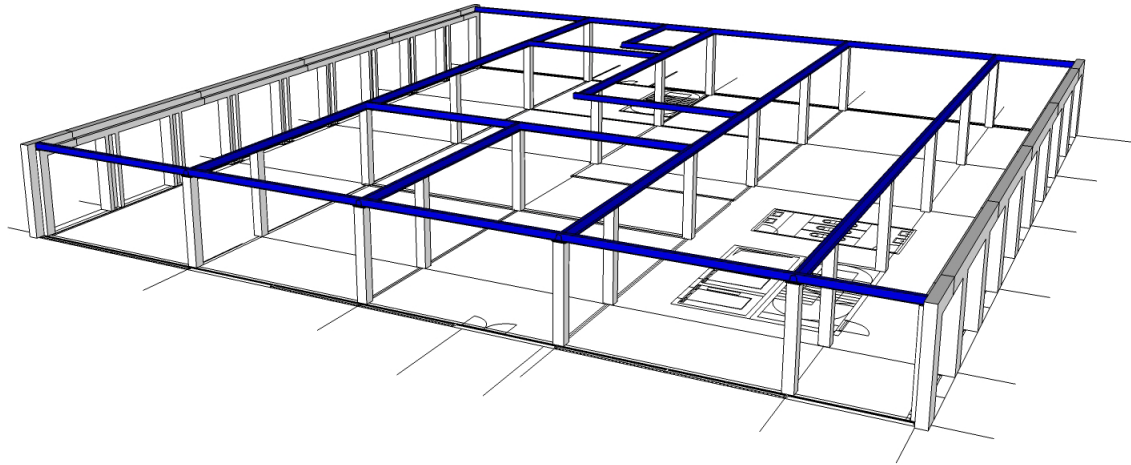
TT element

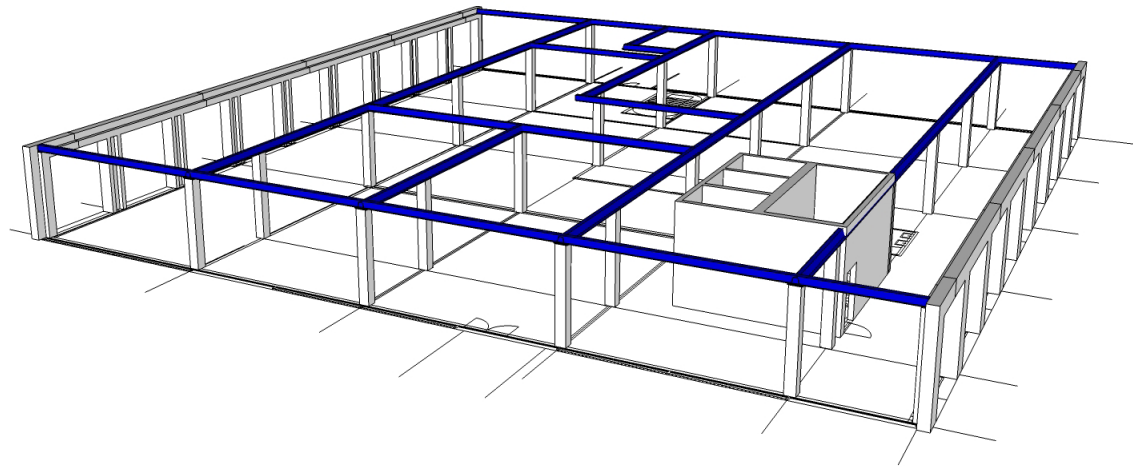


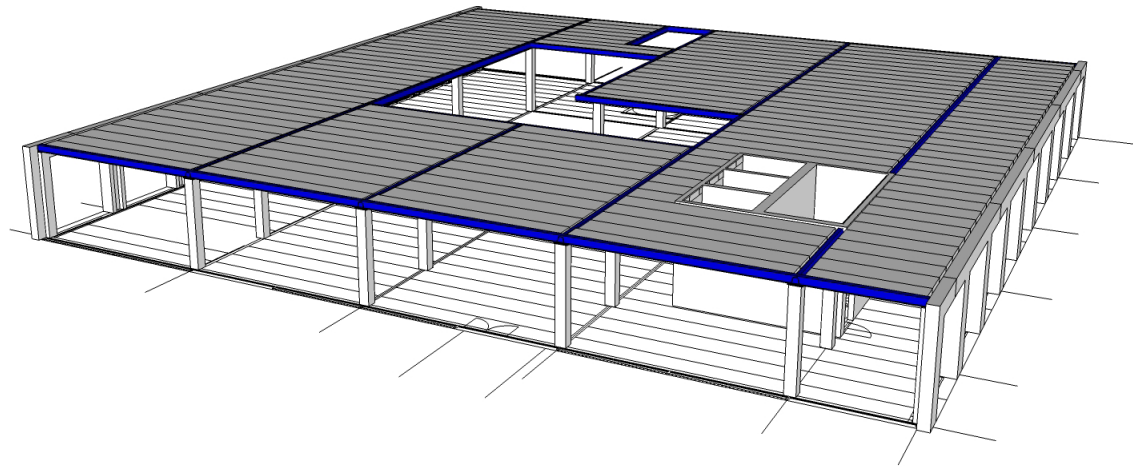


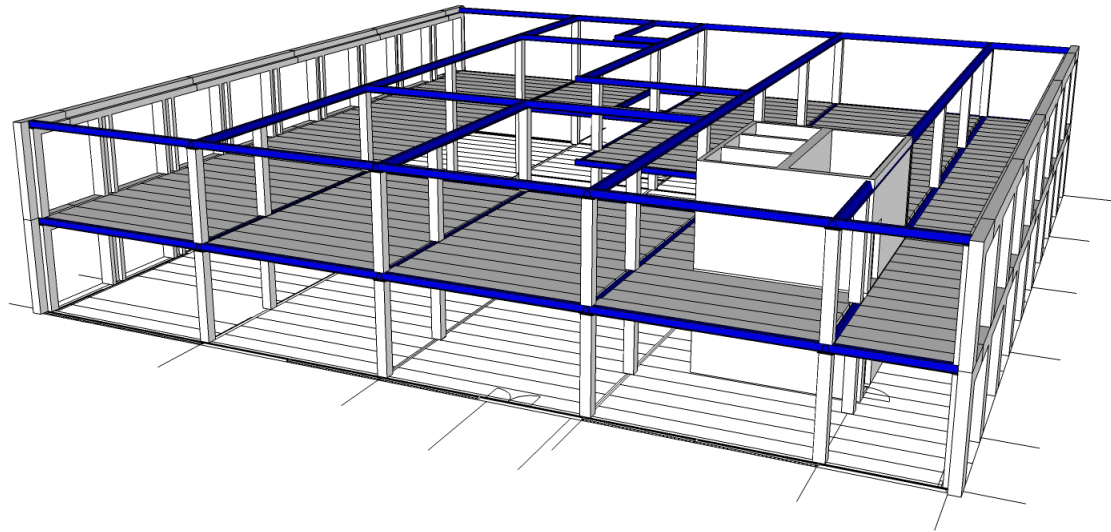


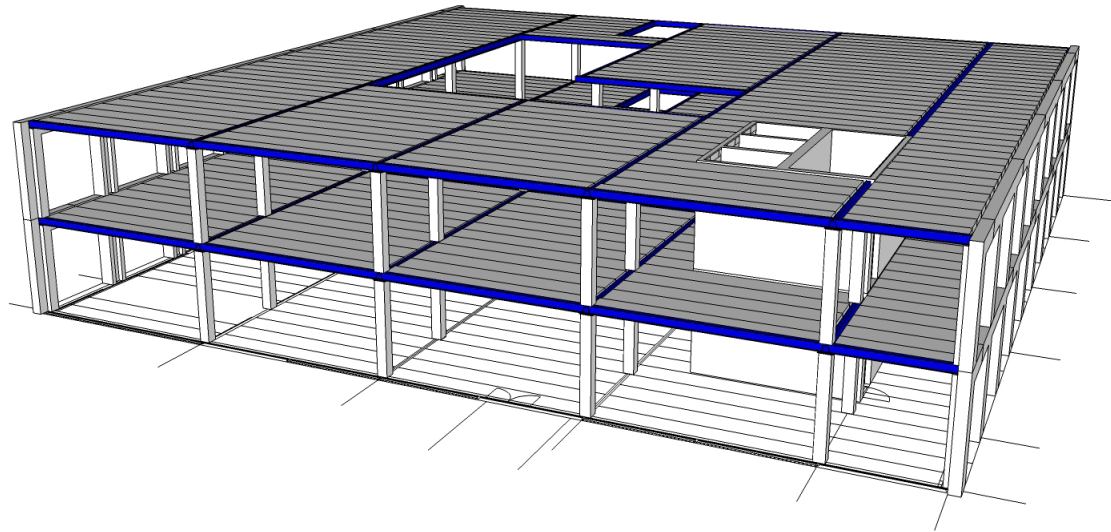


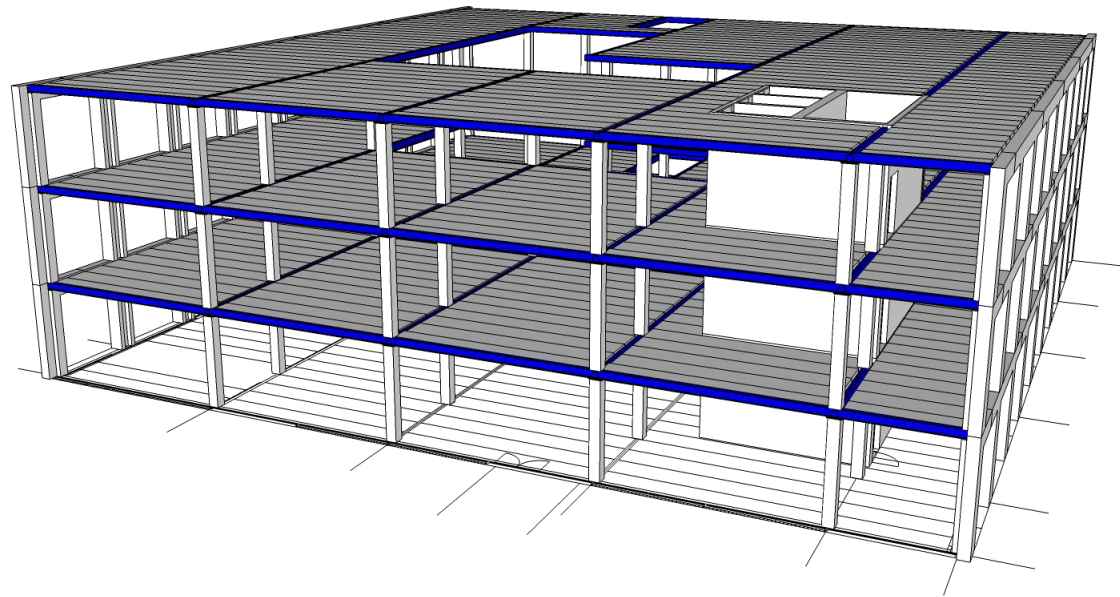


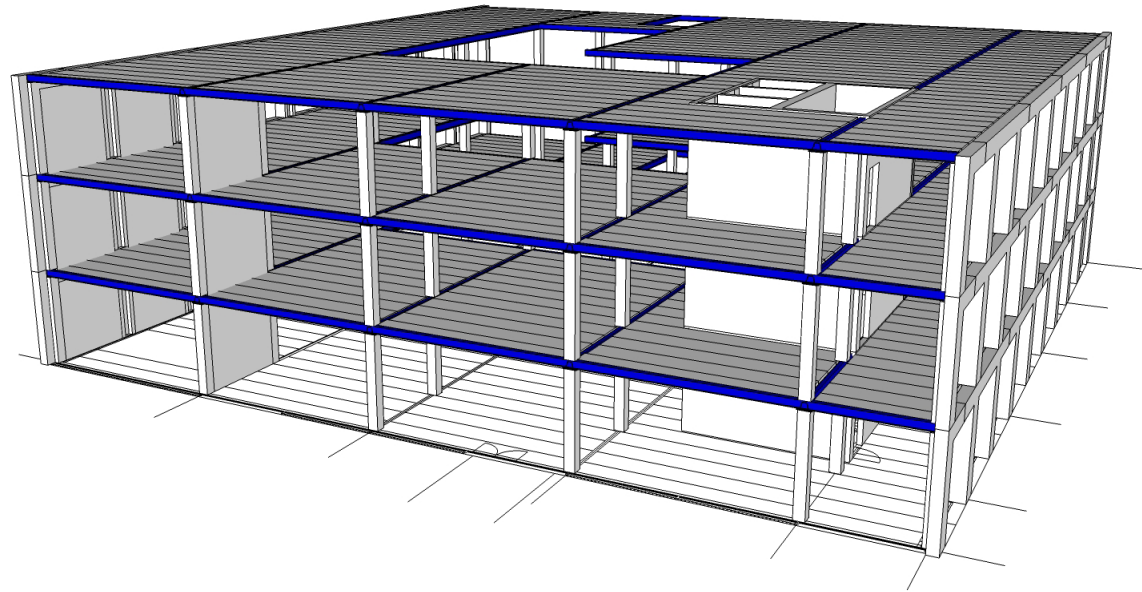


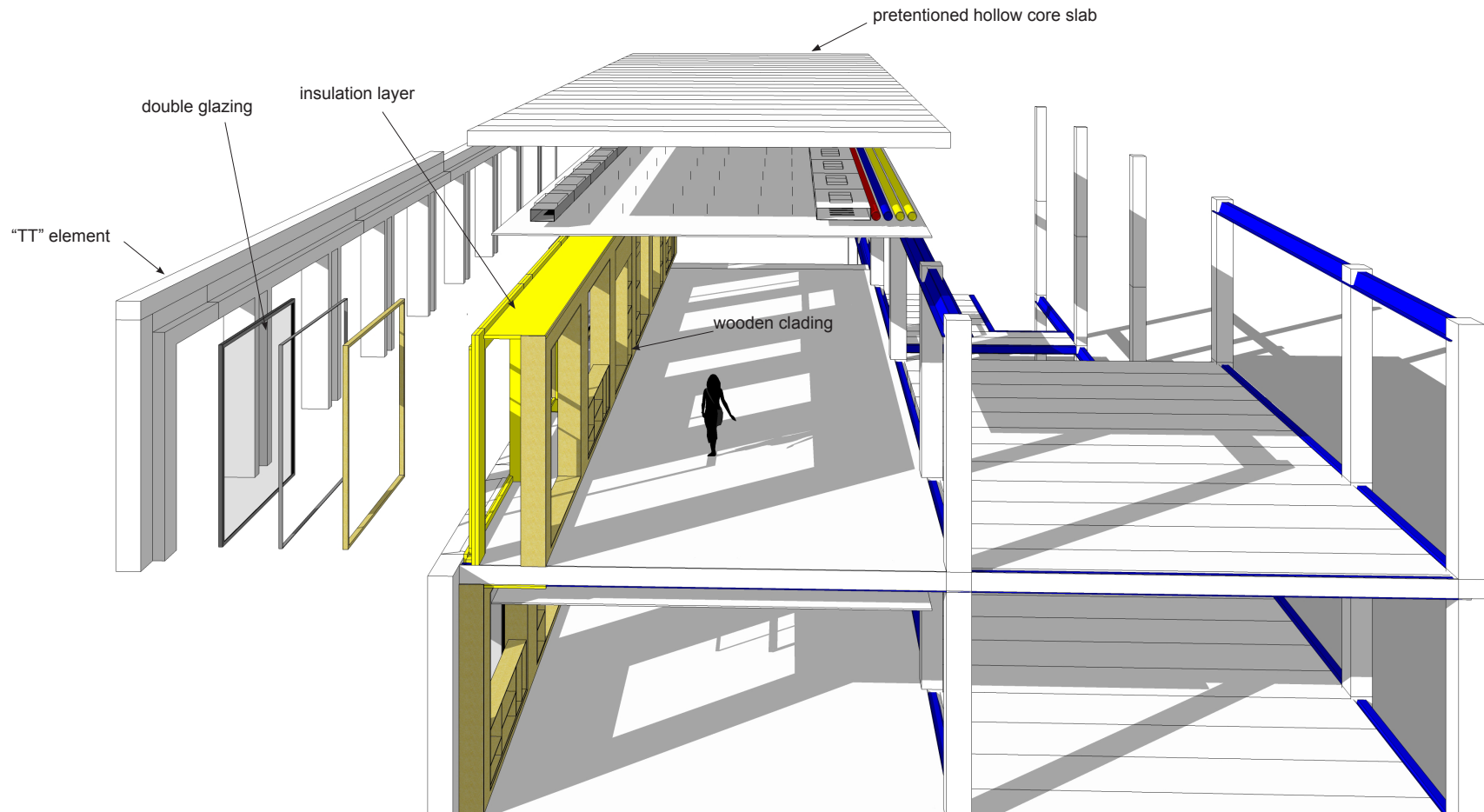


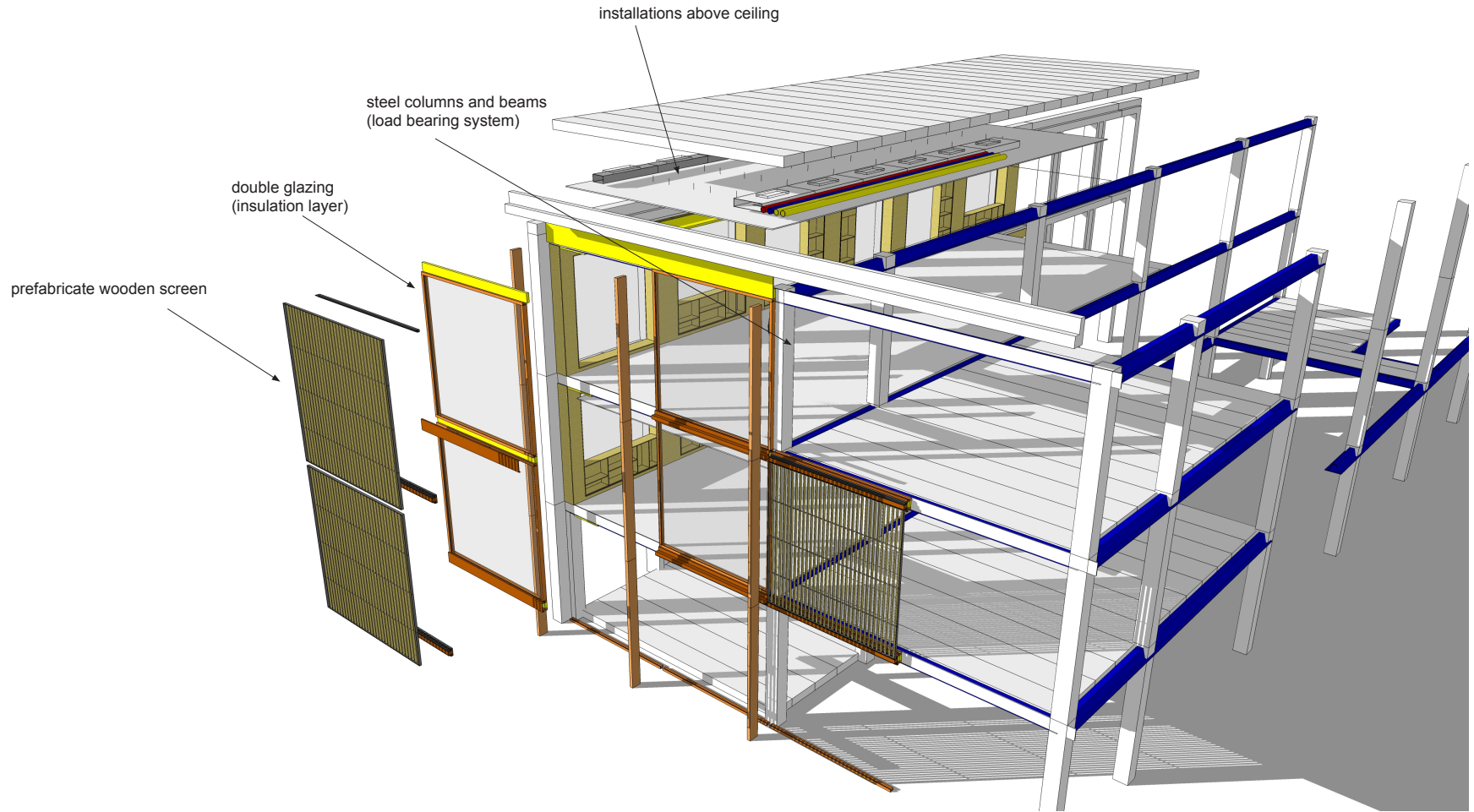


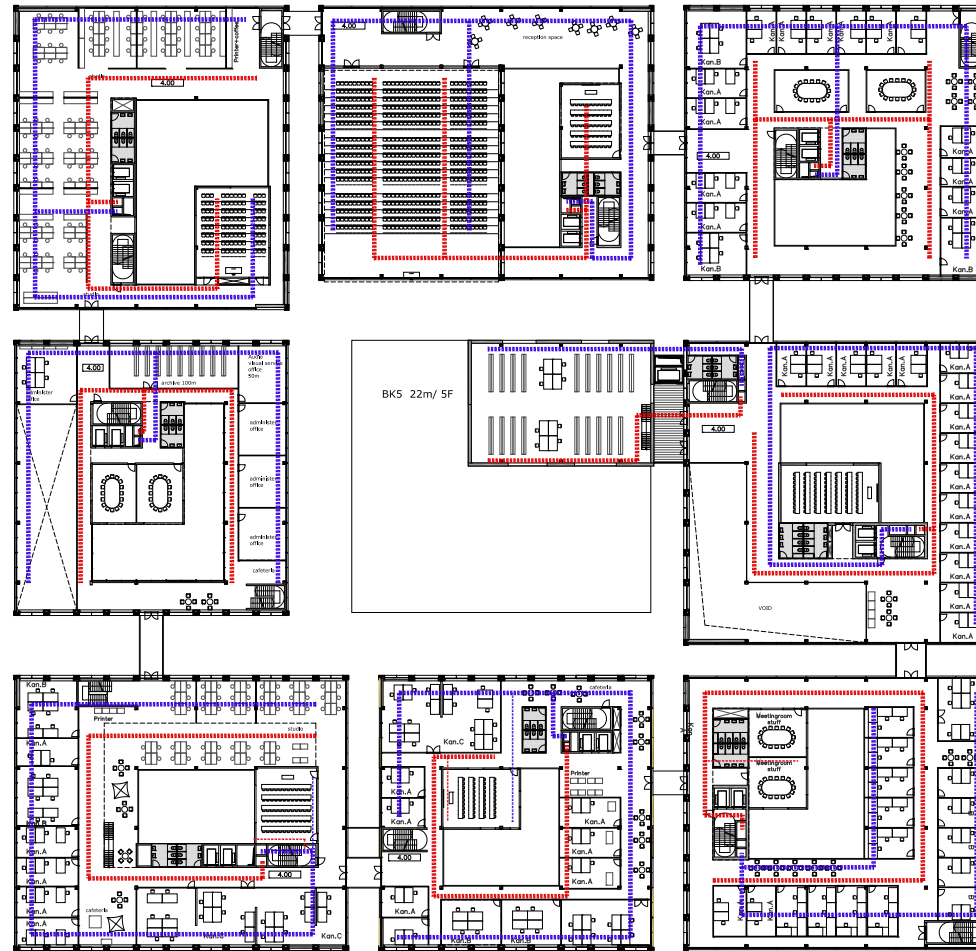




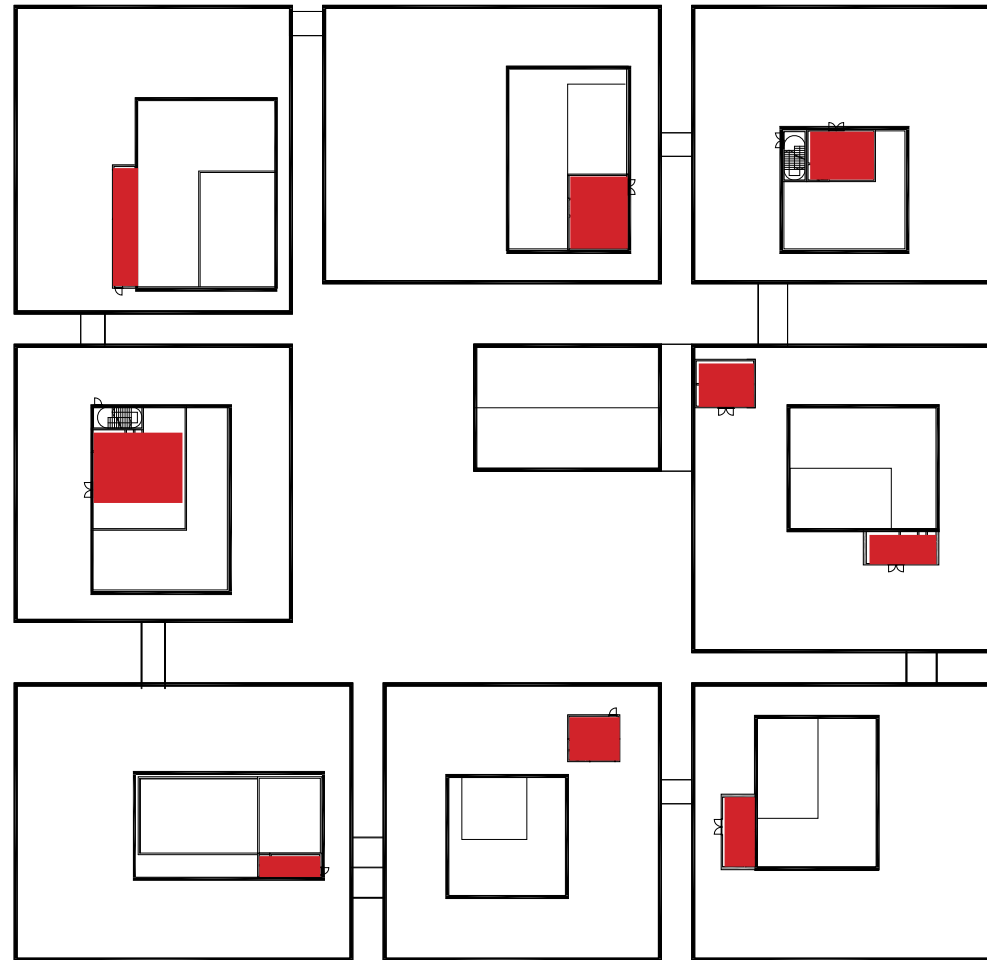




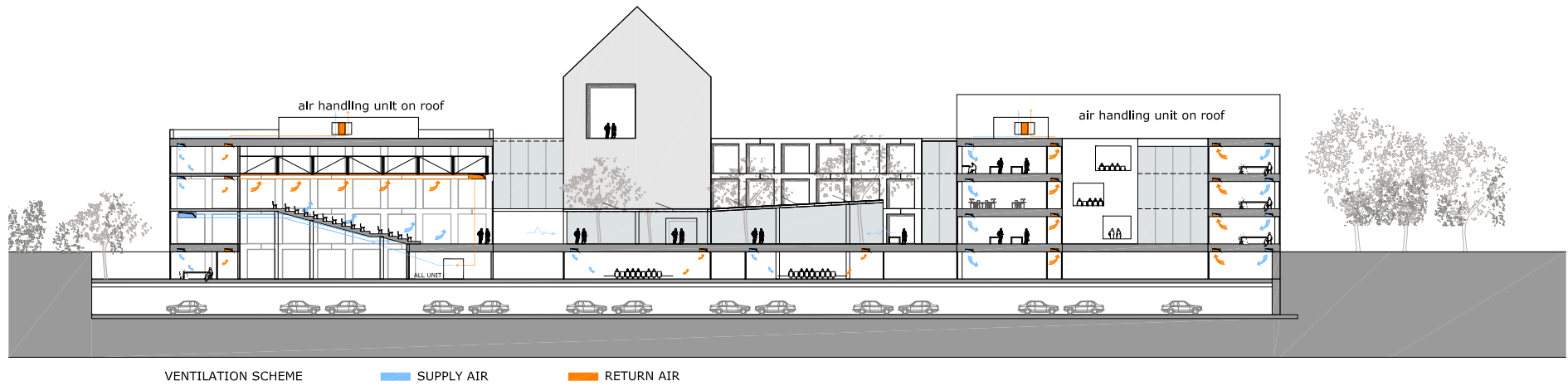


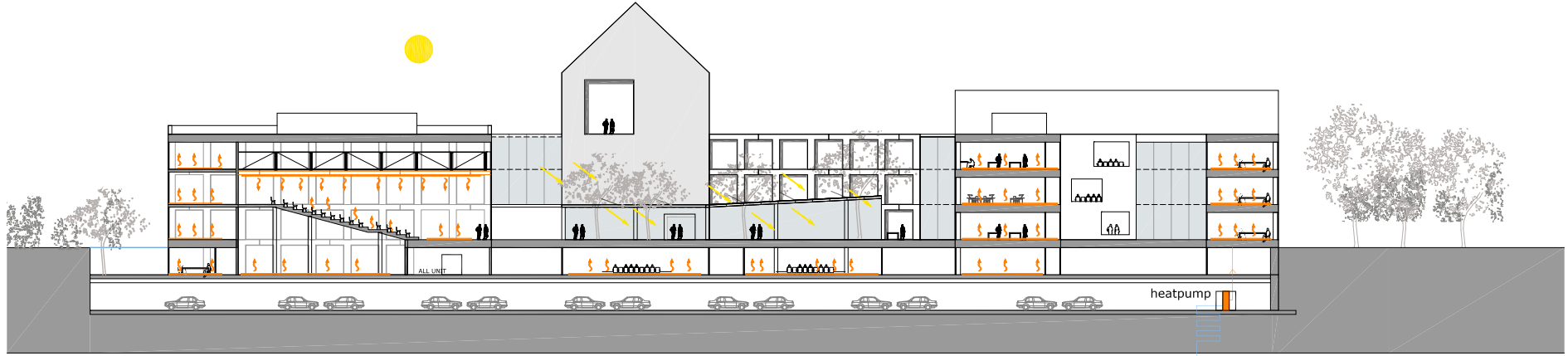


VENTILATION SCHEME FLOORPLAN 1/500



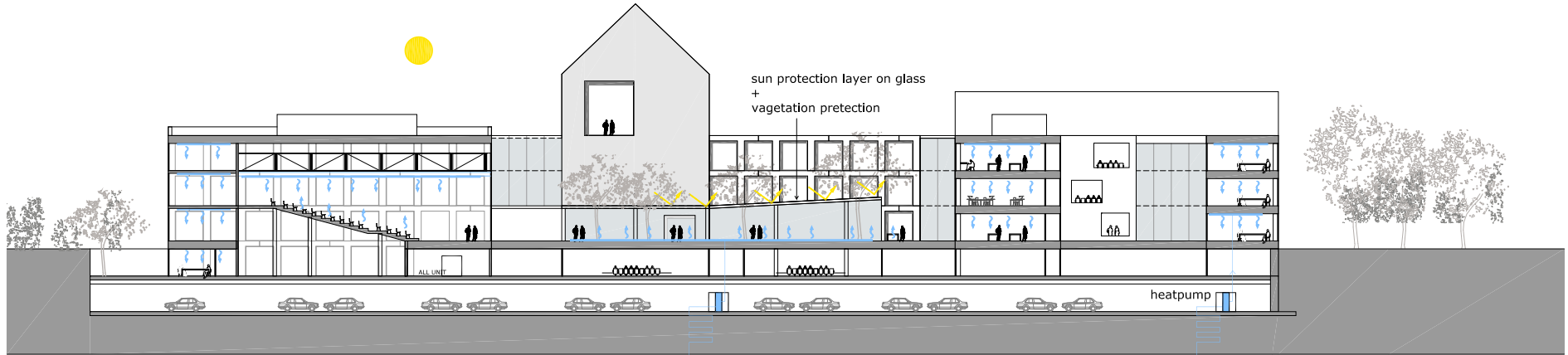
AIR HANDLING UNIT ON ROOF





FLOOR HEATING SYSTEM IN WINTER

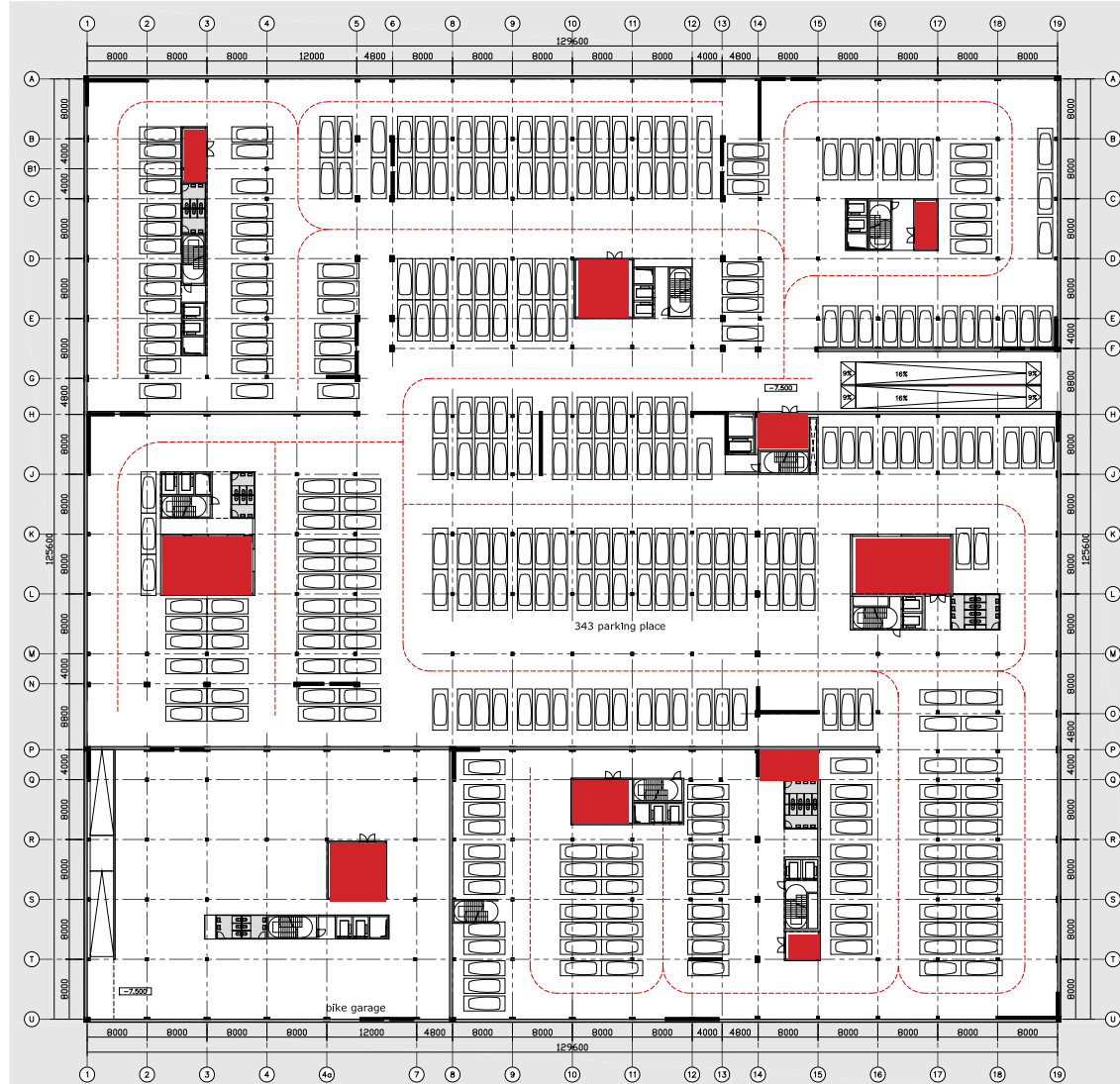
underground water 12c
-80m



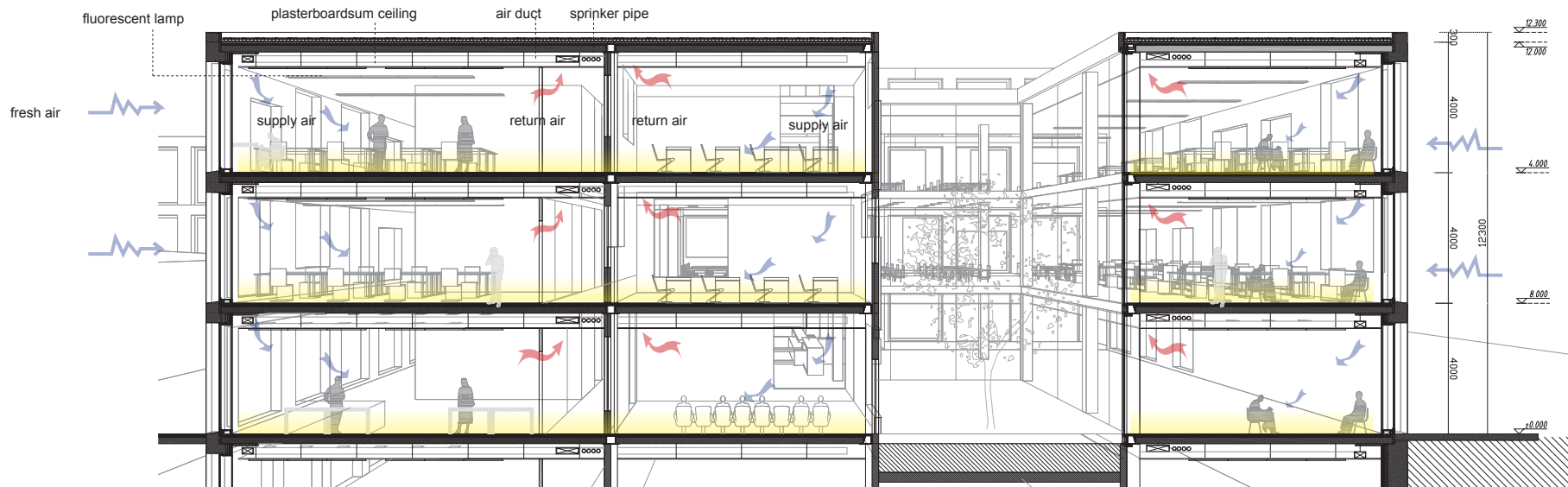
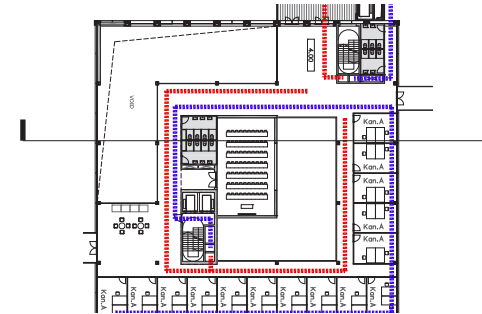
FLOOR COOLING SYSTEM IN SUMMER

underground water 12c
-80m

underground water 12c
-80m



HEAT PUMP IN GARAGE





MASTERPLAN

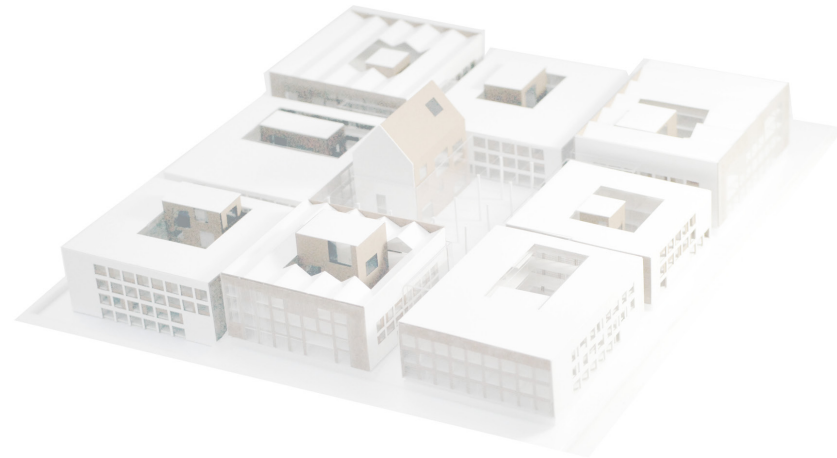
CONCEPT

PROGRAM

FACADE

CONSTRUCTION

INTERIOR









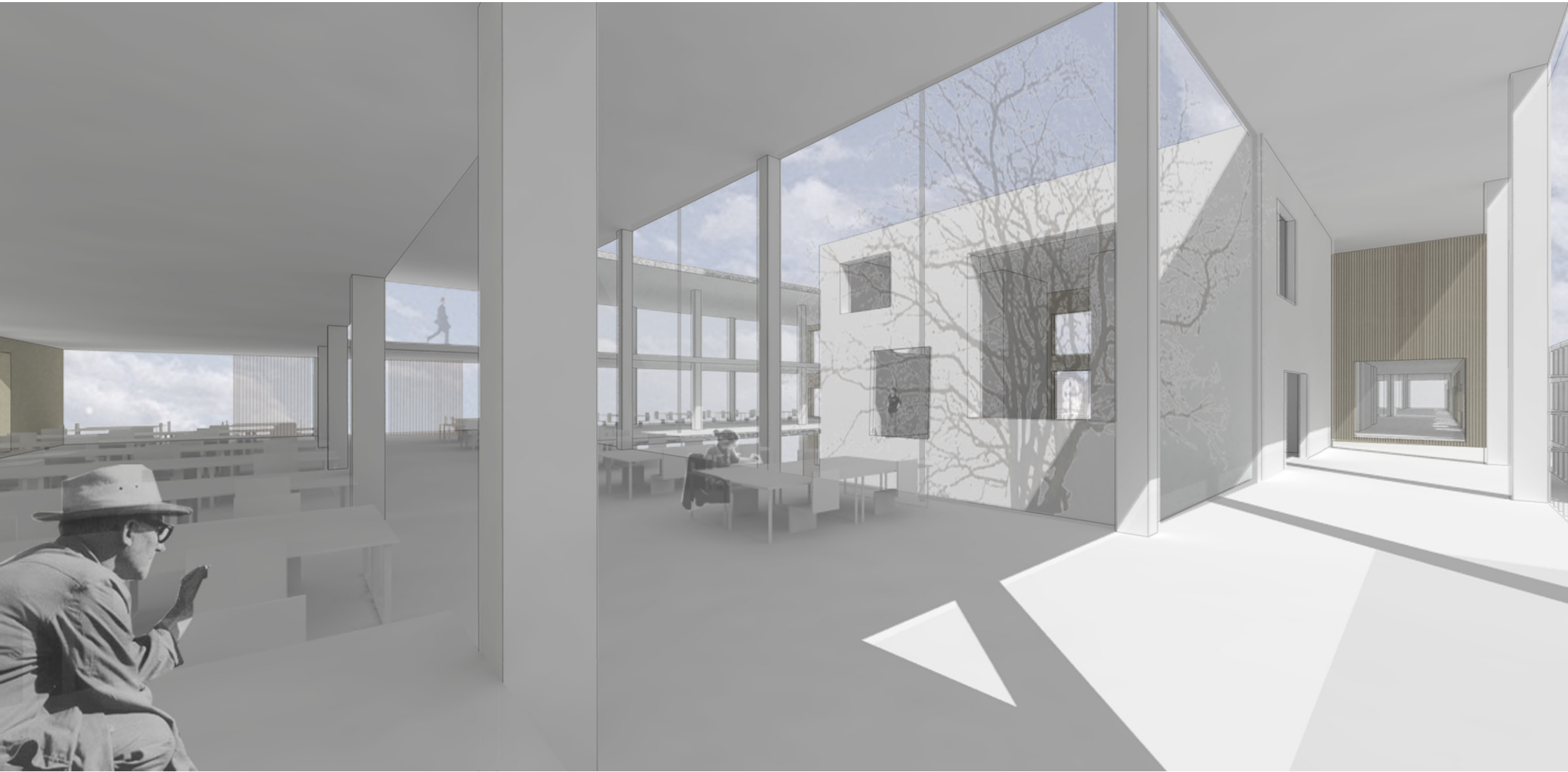


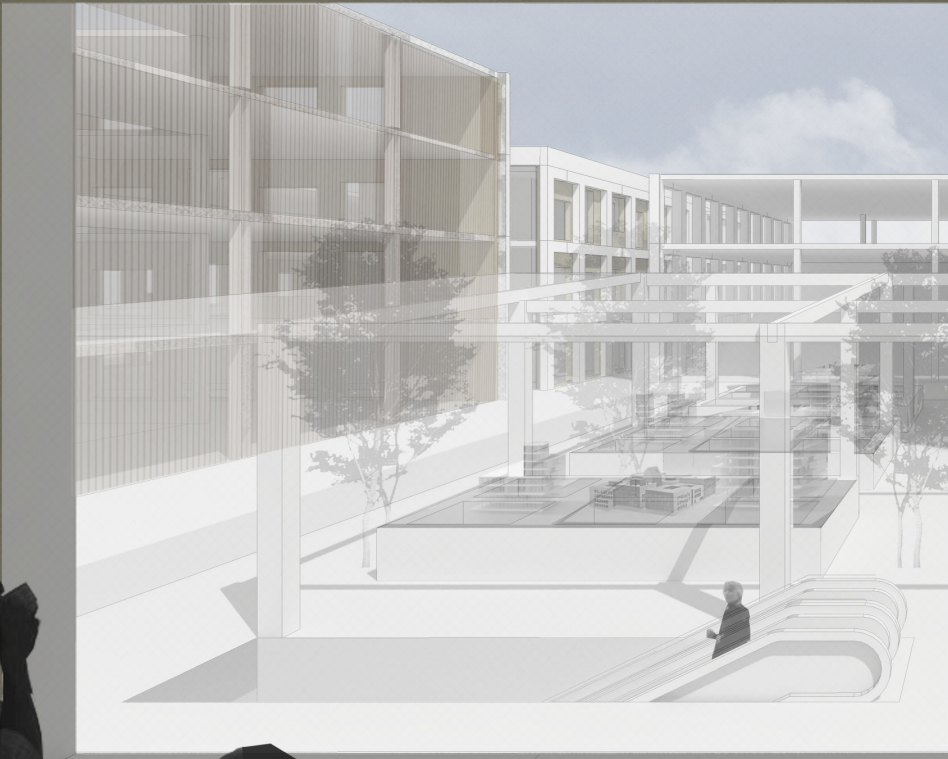




















THANKS FOR YOUR ATTENTION!