

Dwellings, size & typology

The building has multiple dwelling typologies. The aim was to create typologies that are missing in the post-war neighbourhood, such as elderly and family housing. In combination with dwellings for starters, which are in high demand in Delft.

- Starters:
- Loft: 3x 75 m2

- Two bedroom: 11 x 75 m2
- Elderly:
- Two bedroom: 6 x 85 m2



- Family:
- Maisonette, three bedroom: 6 x 100 m²

- Maisonette, three bedroom 2 x 140 m2²
- Total amount of rentable floorspace: 2440 m²



The Vocational School

The school has a total area of 9500 m², based on reference projects the student capacity is: 800

14 class rooms: +/- 80 m²

7 offices: +/- 50 m²

Study areas: 2 x 315 m²

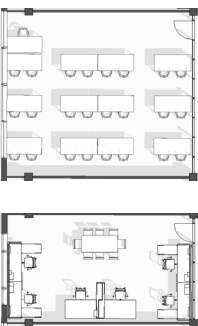
Workplaces: 1360 m²

Class room capacity : 336 students

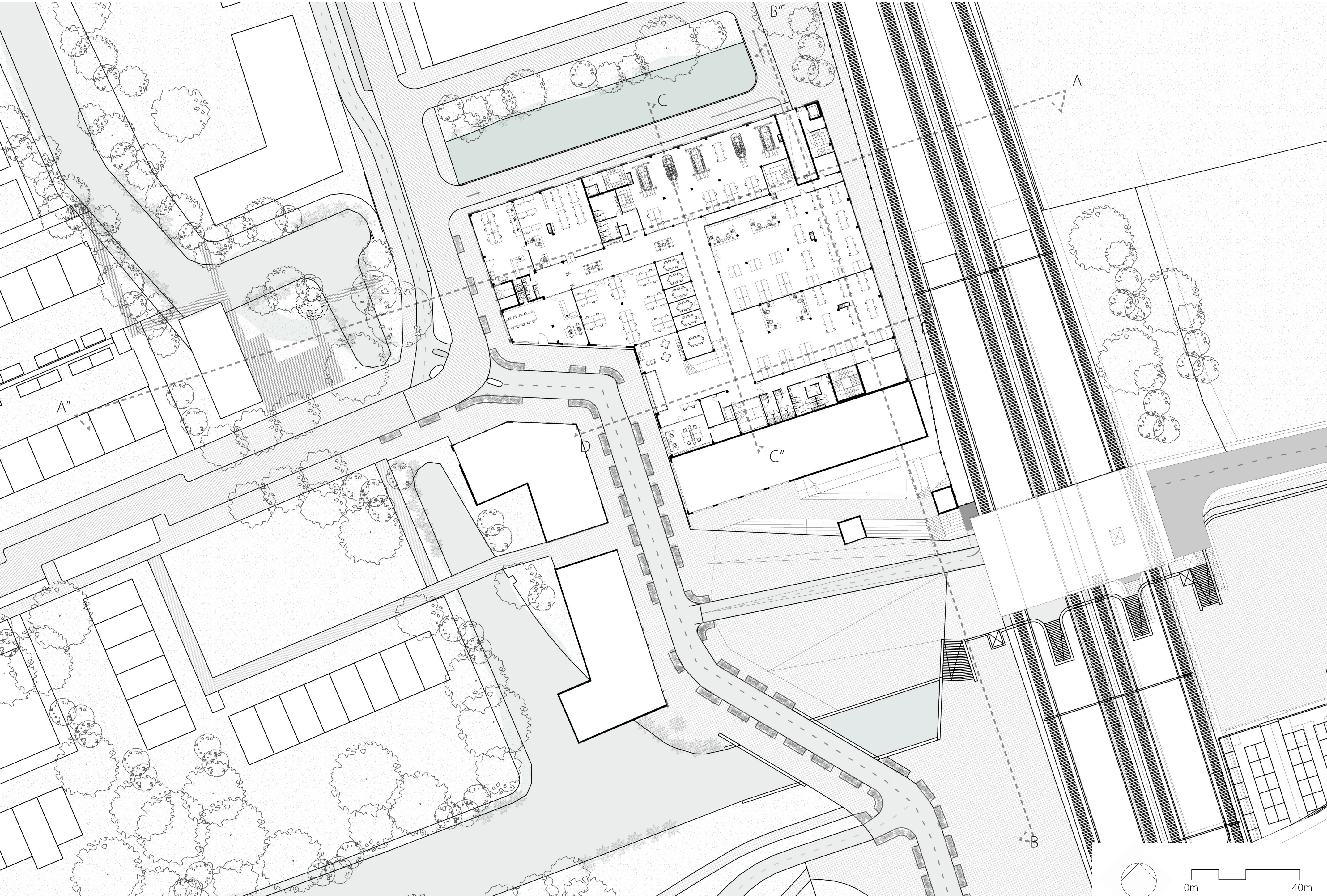
Office capacity 42 staff members

Capacity: 170 students

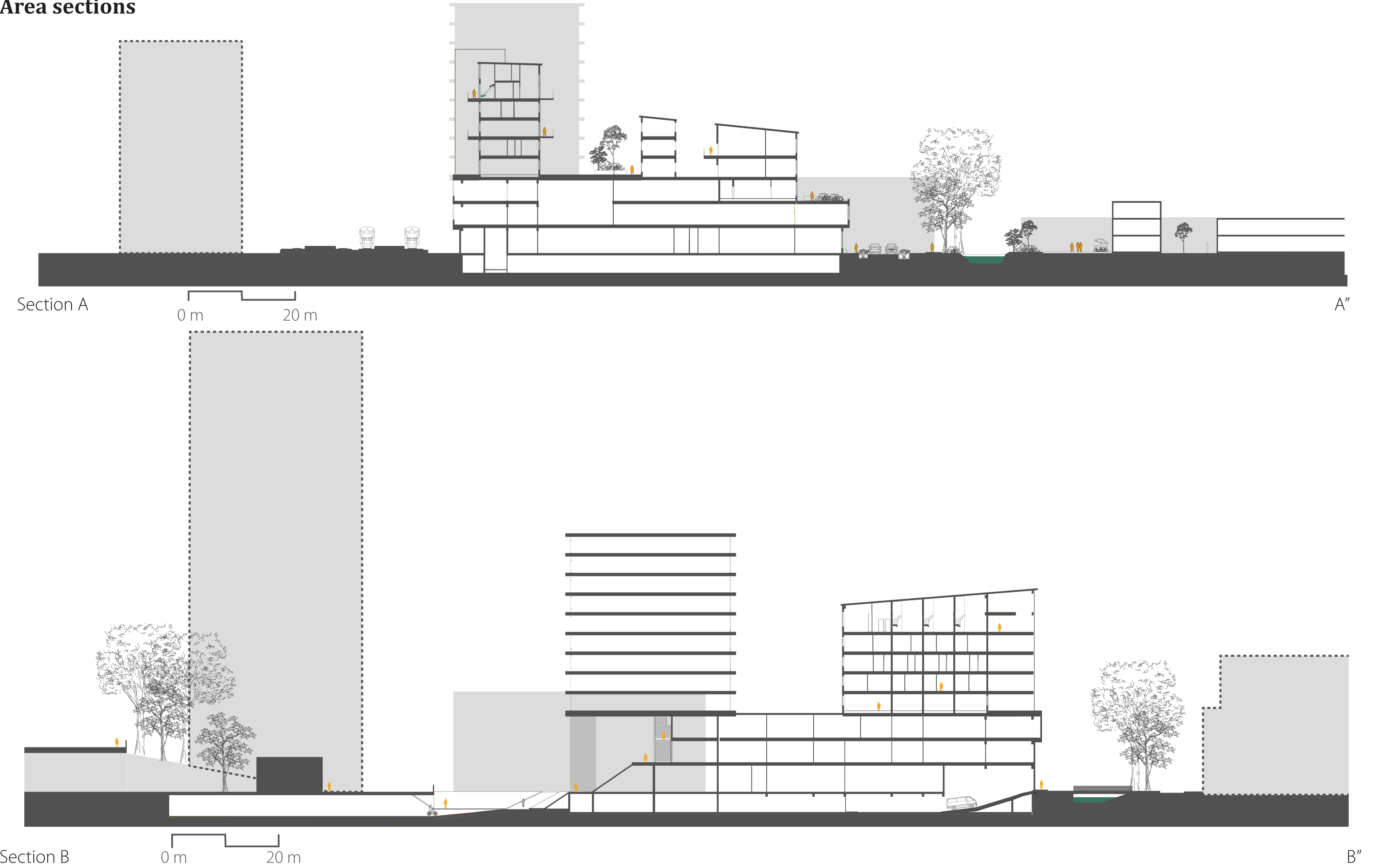
Capacity: roughly 200 students



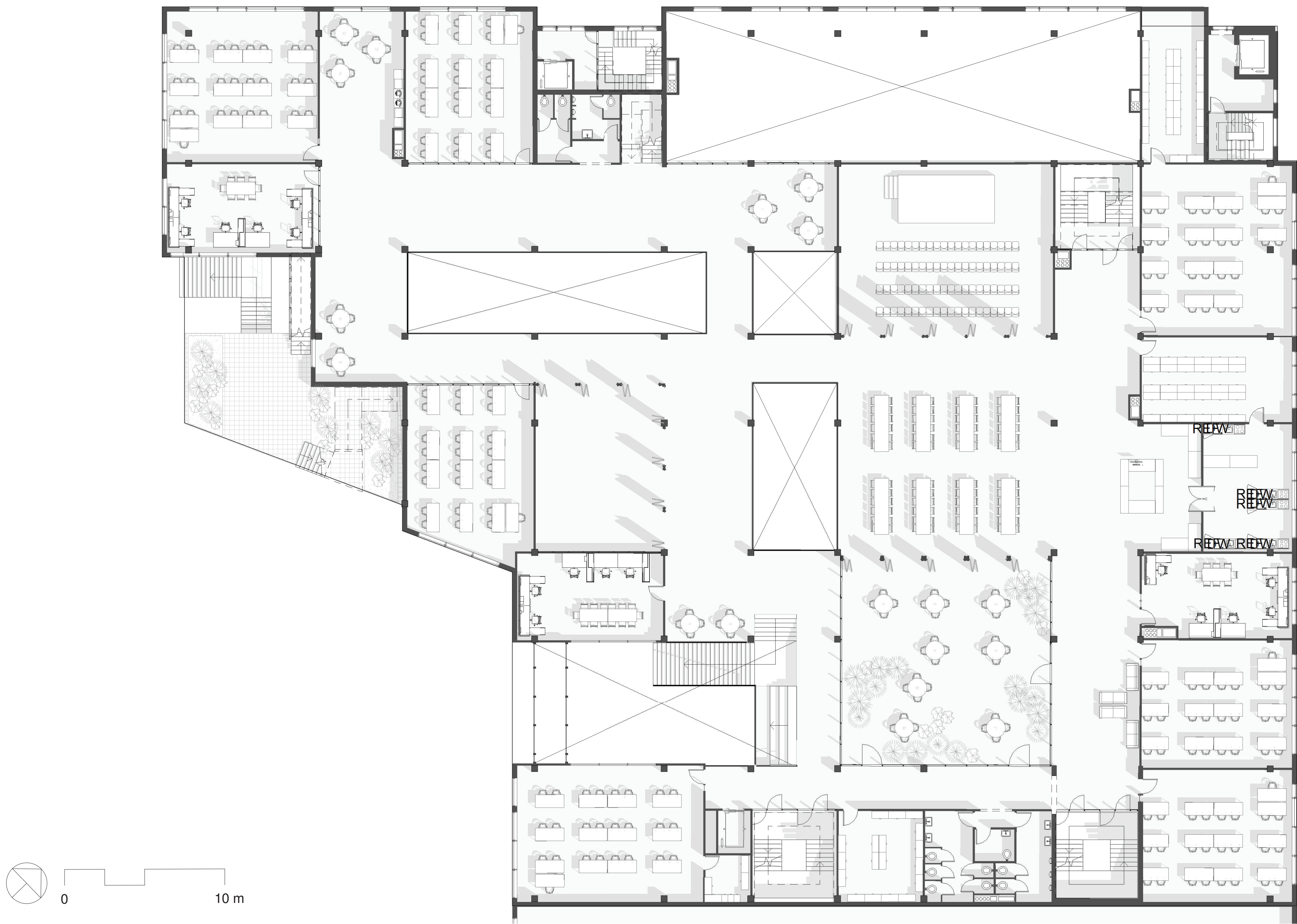
Area map



Area sections



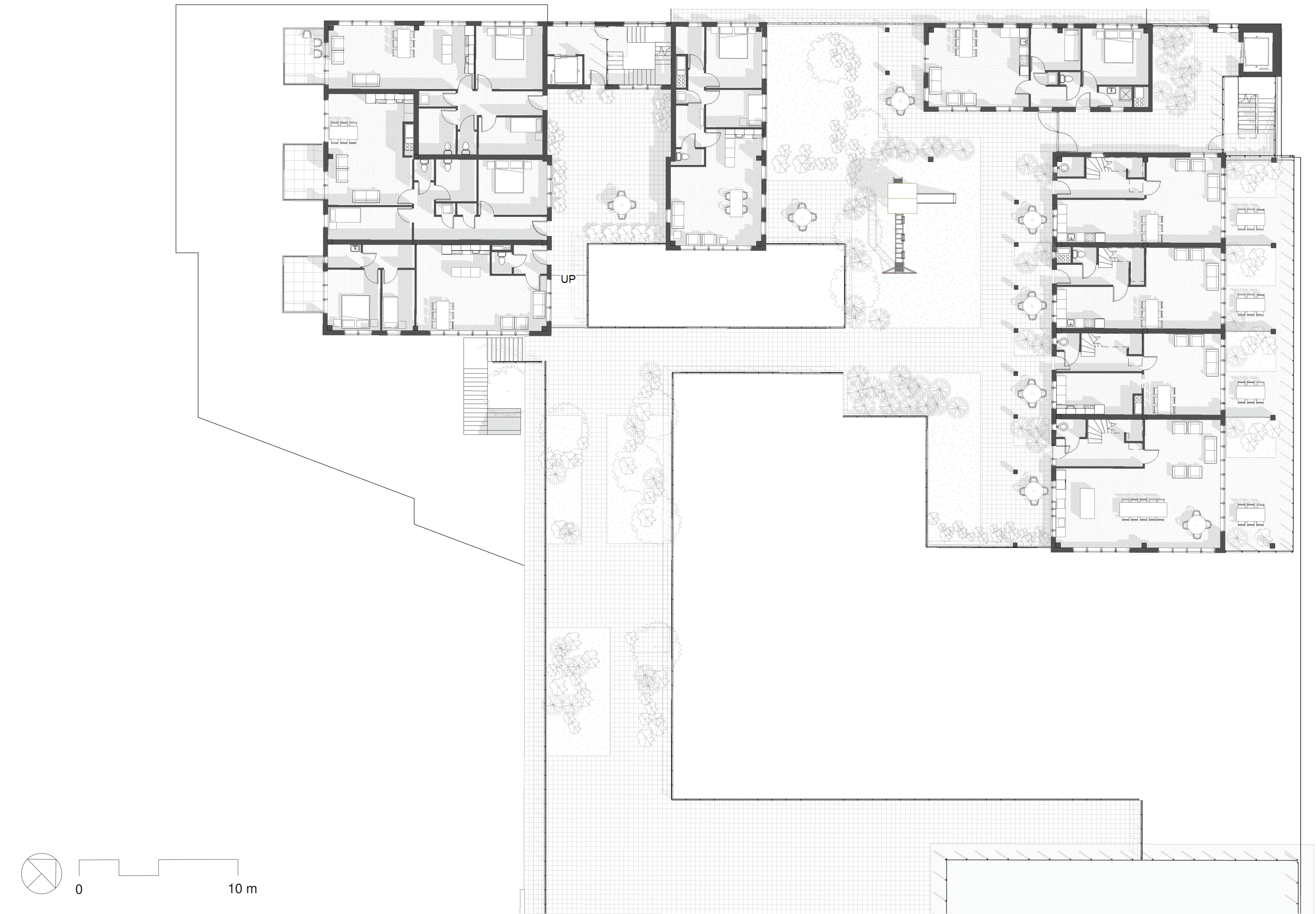
Floor plan level 2



Floor plan level 3



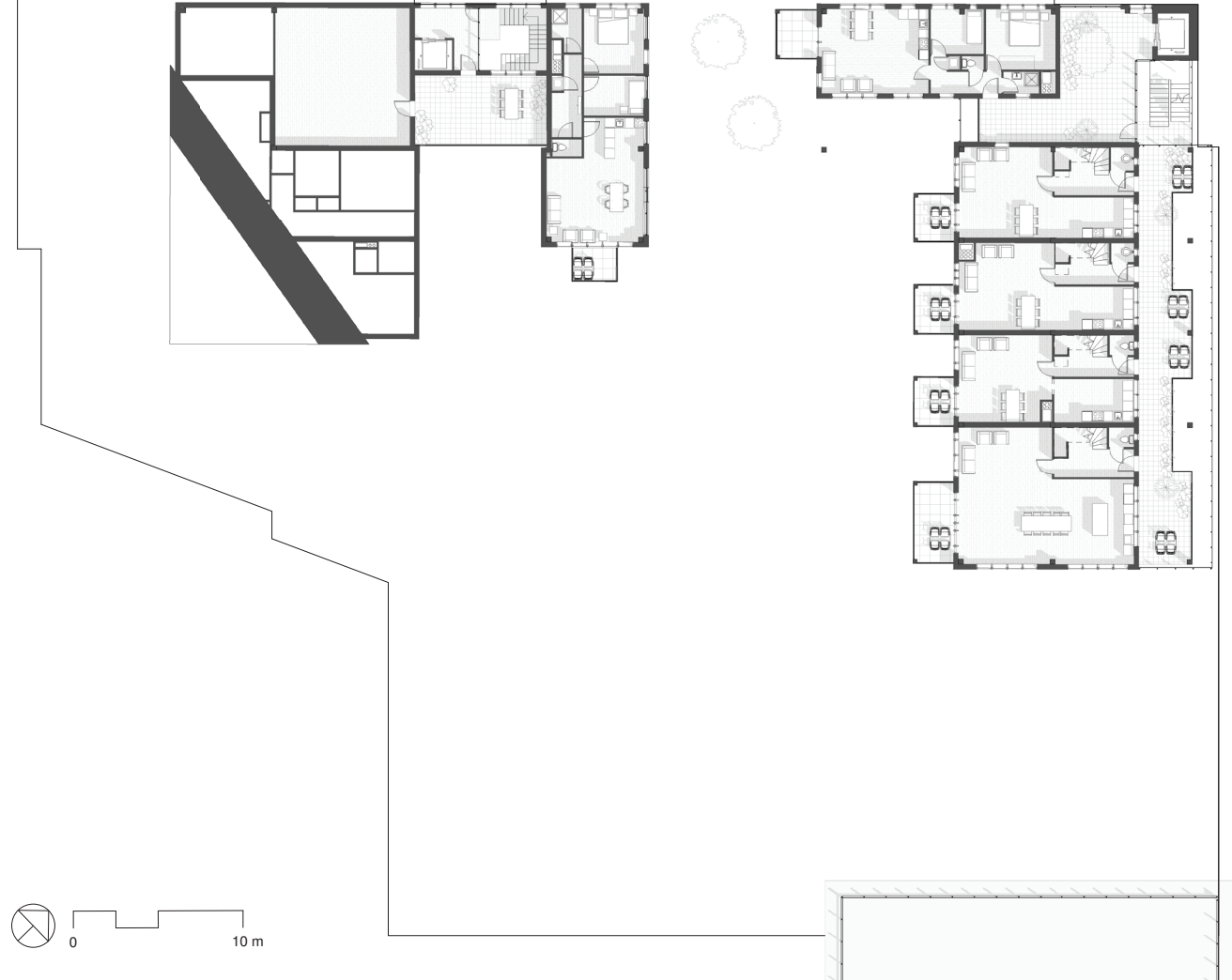
Floor plan level 4



Floor plan level 5



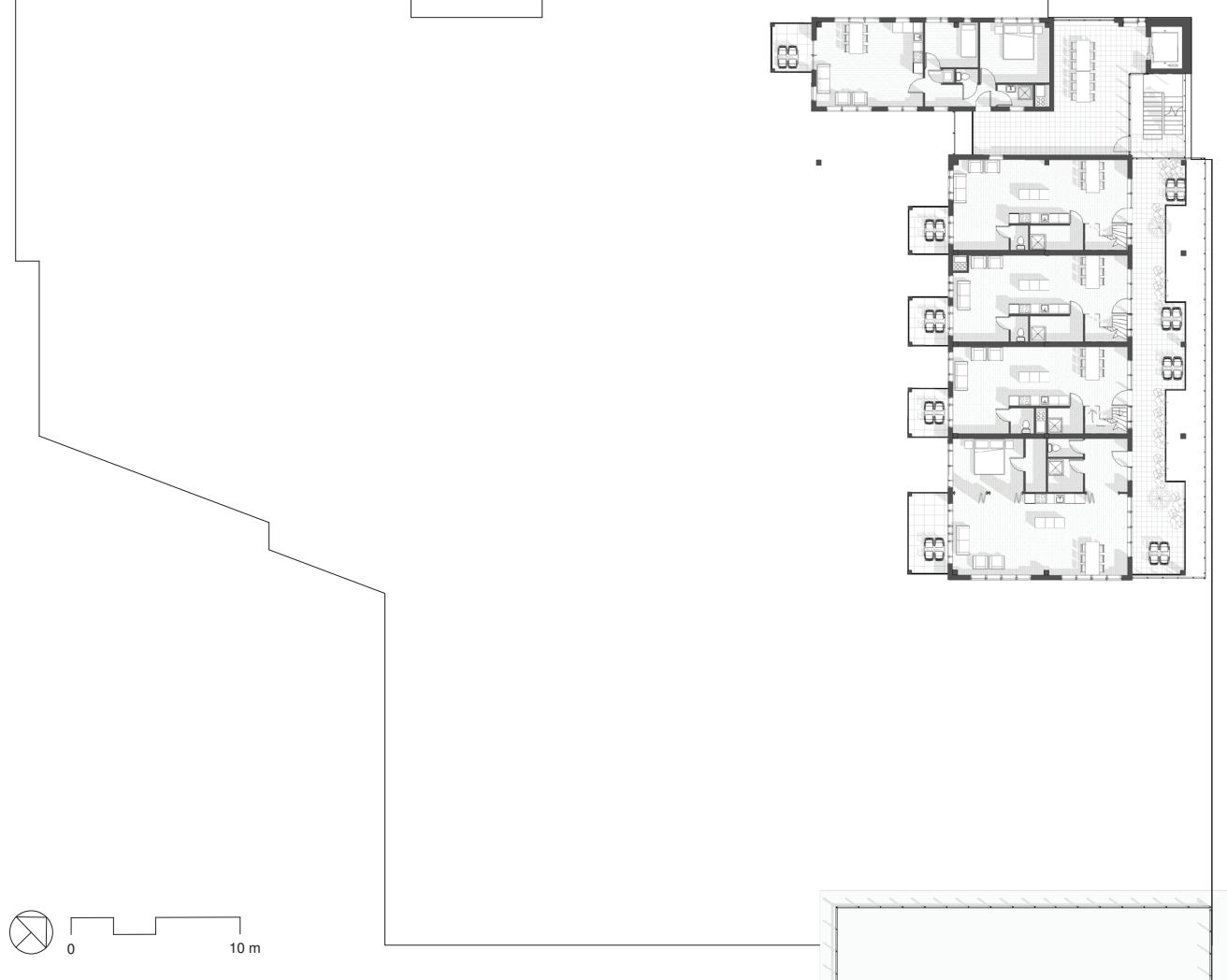
Floor plan level 6



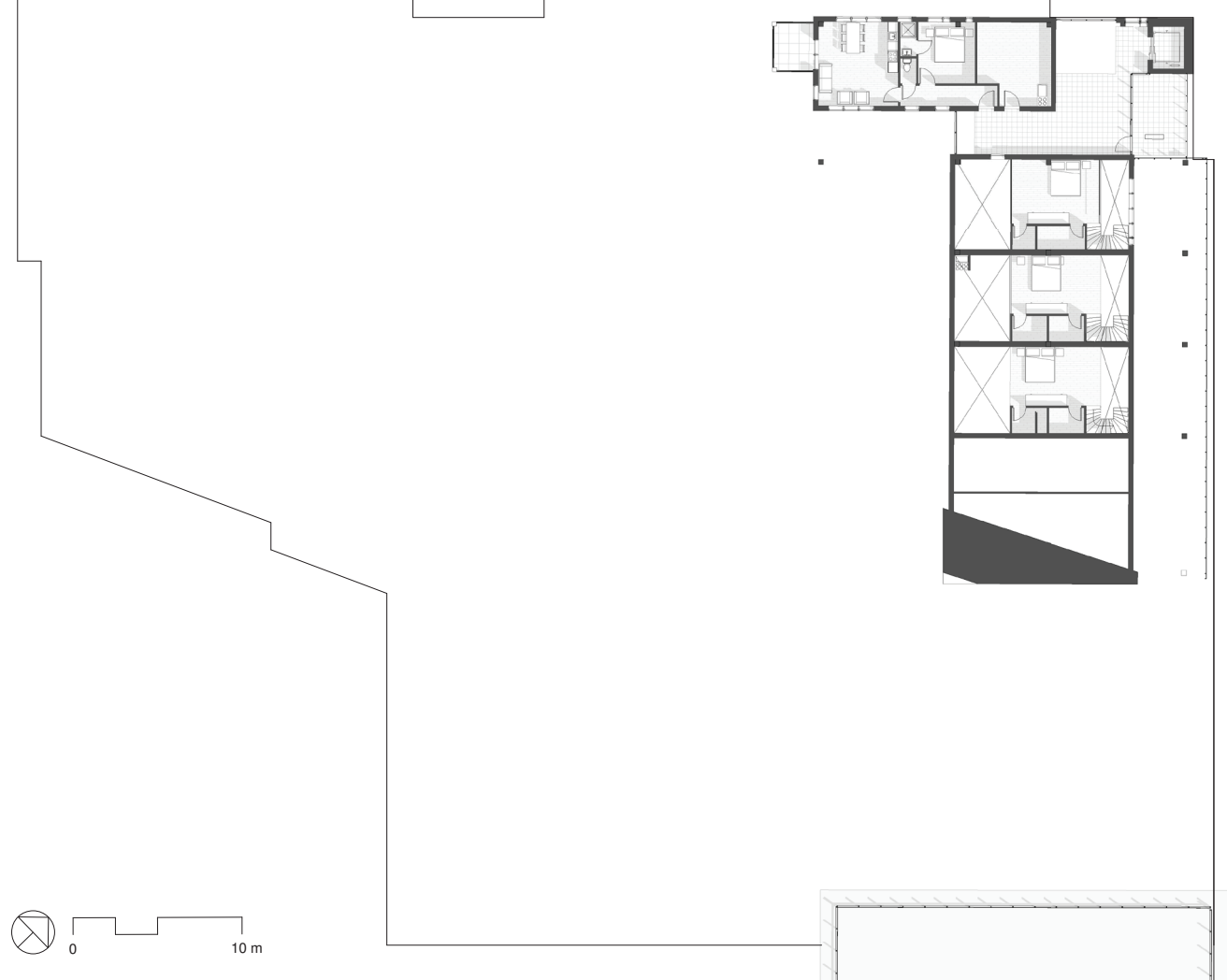
Floor plan level 7



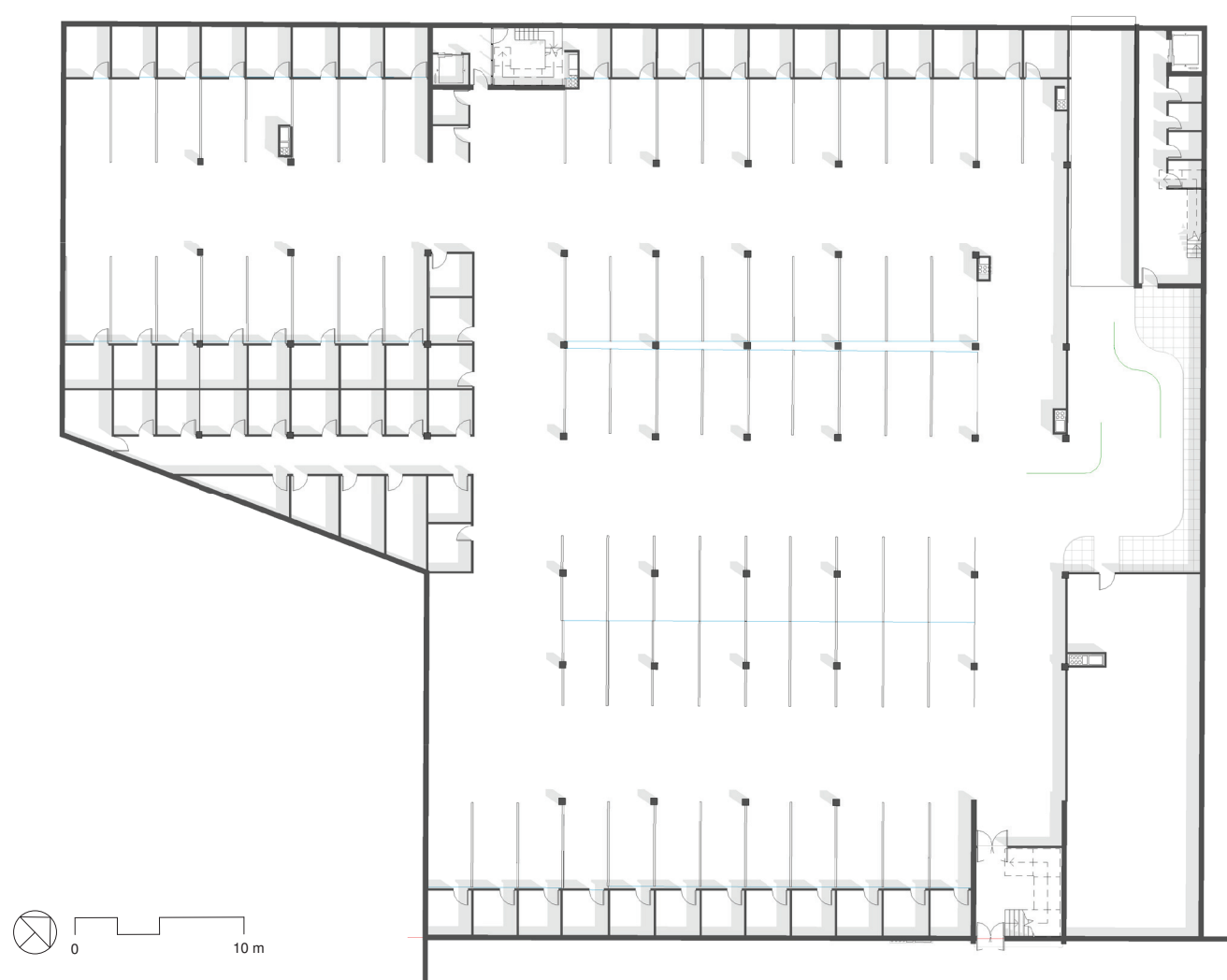
Floor plan level 8



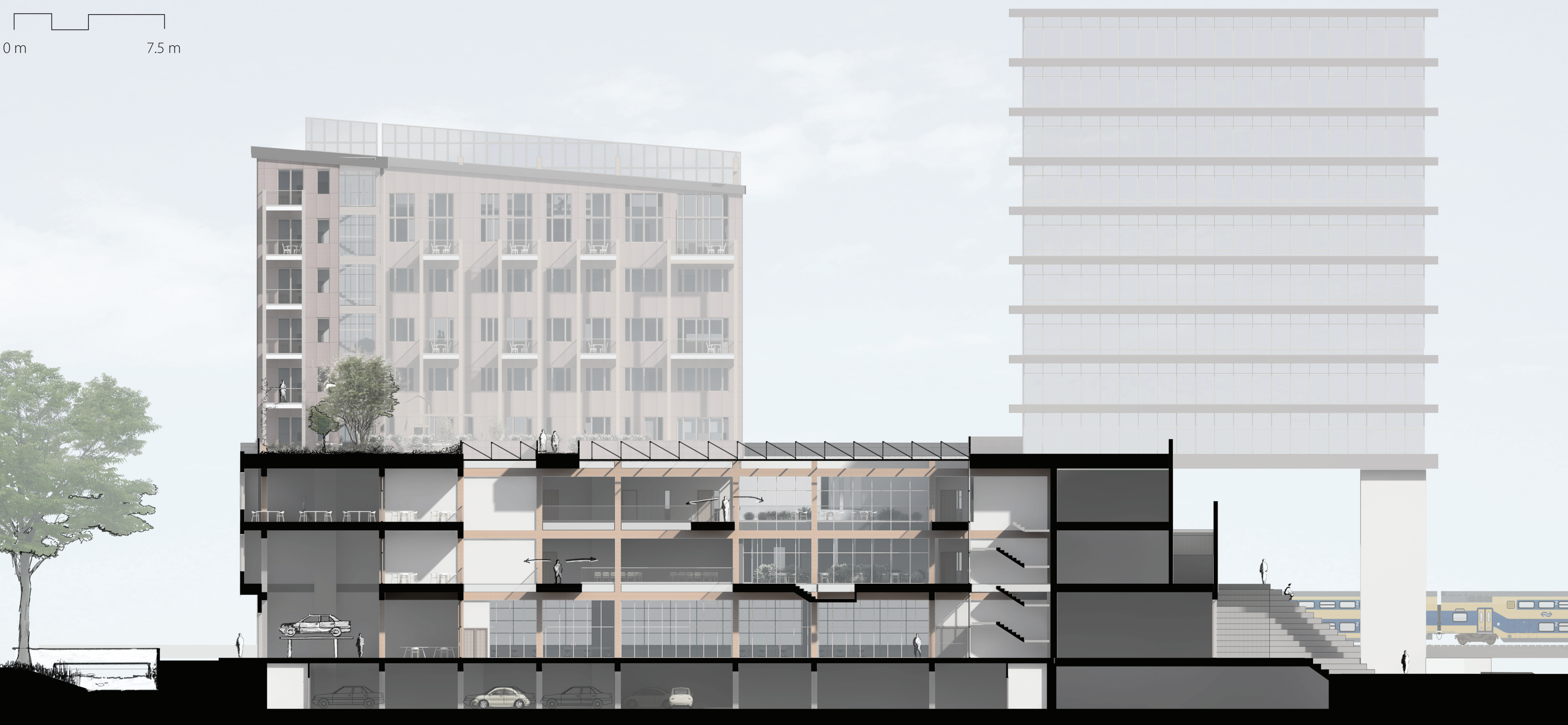
Floor plan level 9



Floor plan level -1



Section C

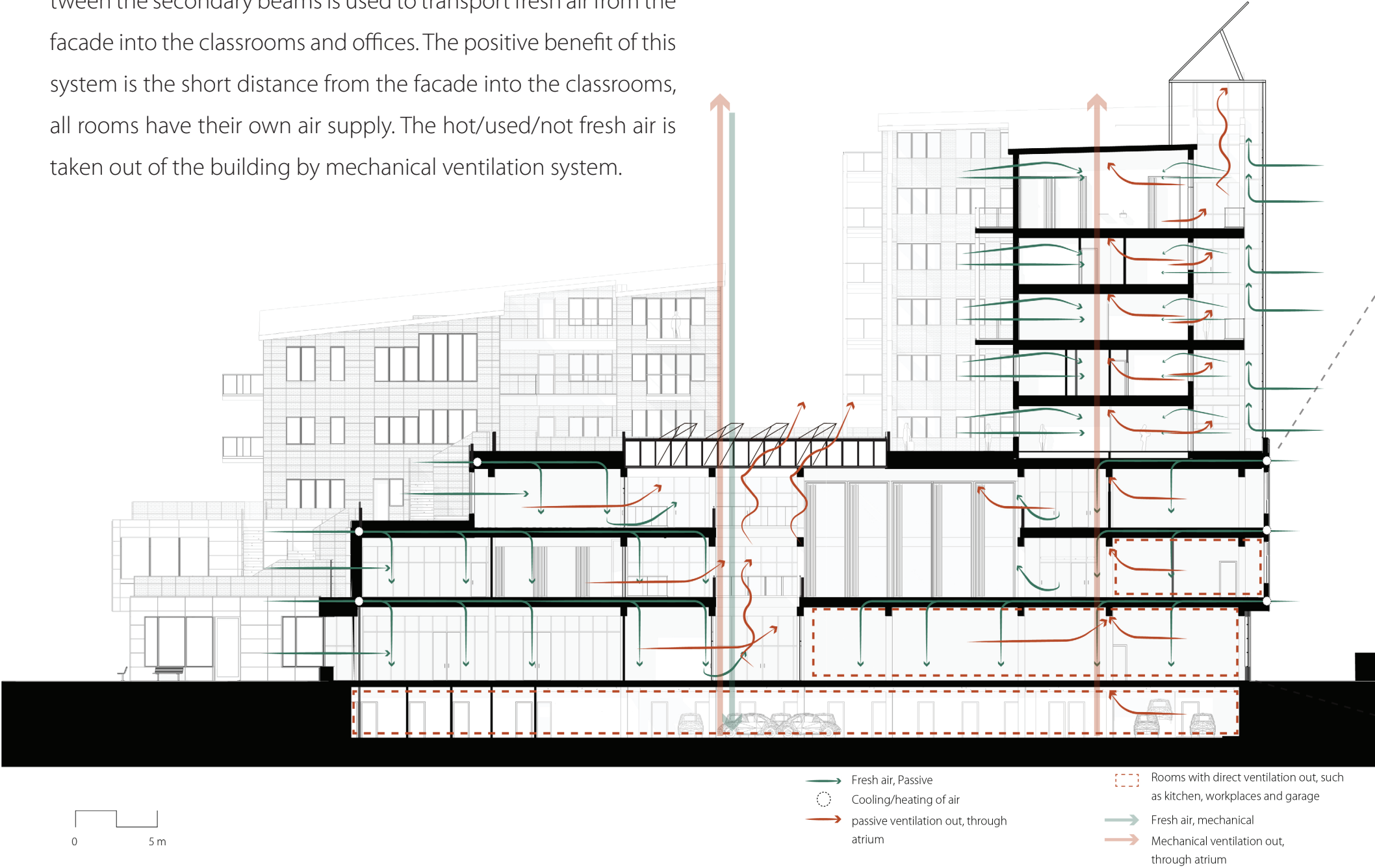


Section D

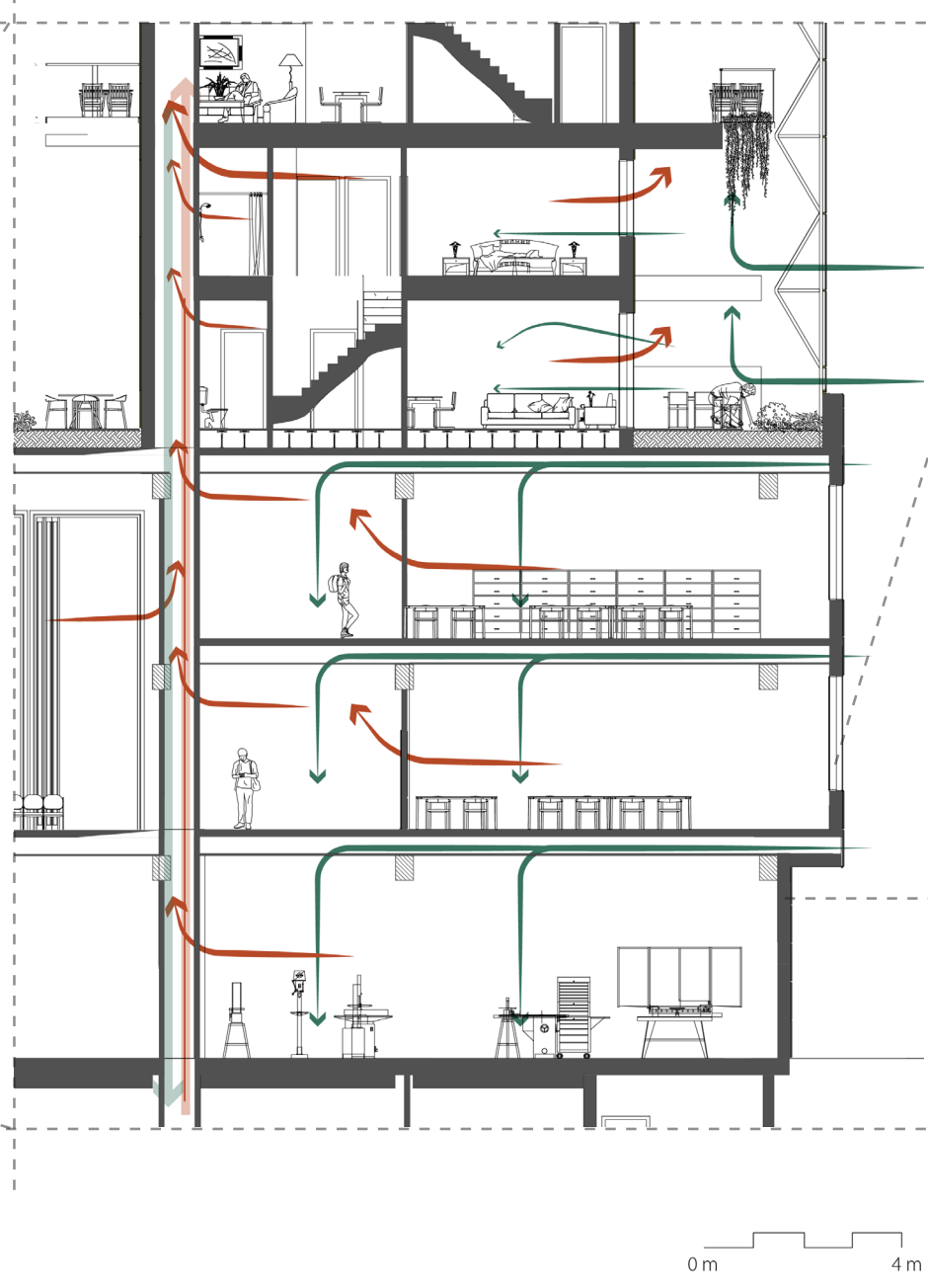


Integrated climate design

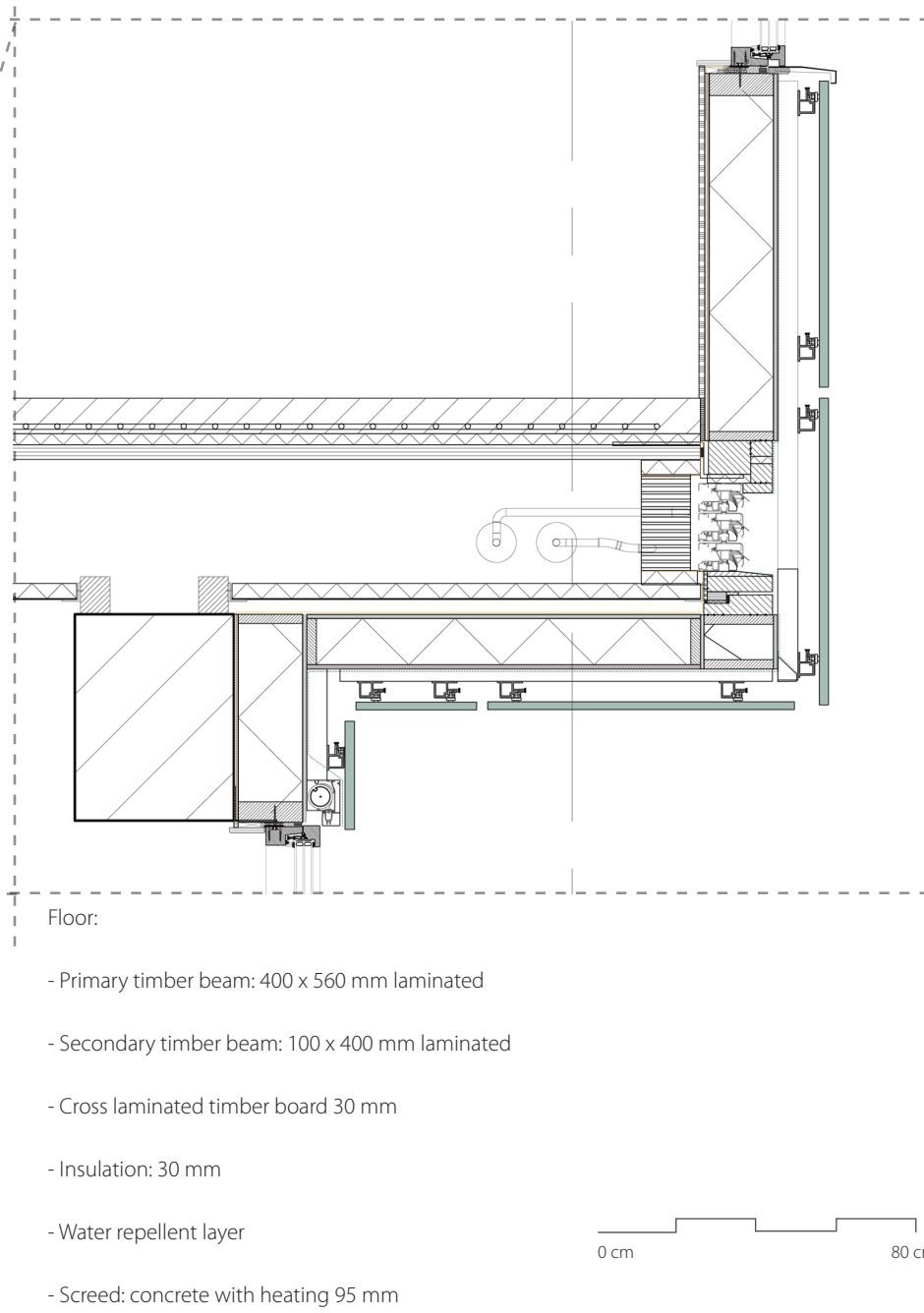
The building uses a plenum ventilation system, the space in between the secondary beams is used to transport fresh air from the facade into the classrooms and offices. The positive benefit of this system is the short distance from the facade into the classrooms, all rooms have their own air supply. The hot/used/not fresh air is taken out of the building by mechanical ventilation system.



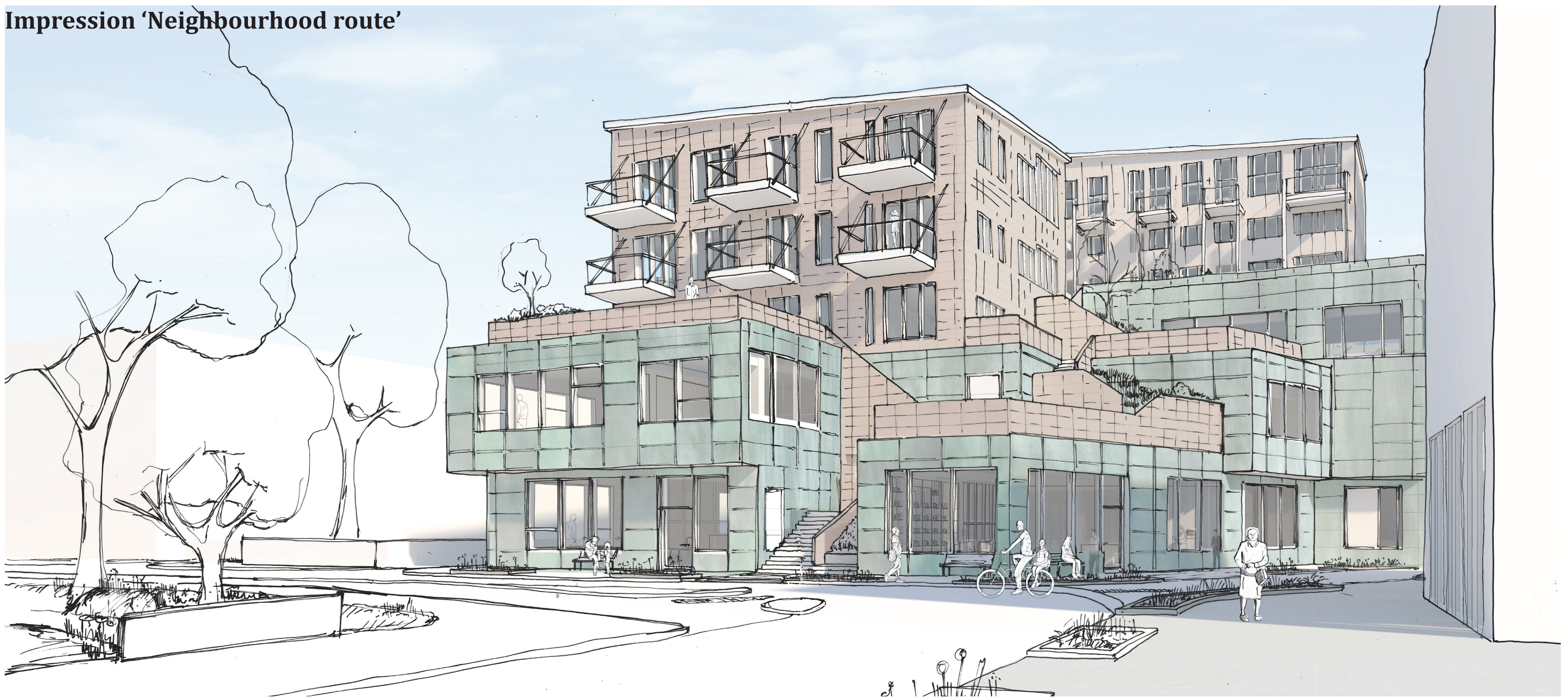
Vertical section, ventilation 1:100



Vertical section V1 1:20



Impression 'Neighbourhood route'



Impression 'North Facade'



Impression 'Station square'

