



woon werk straat

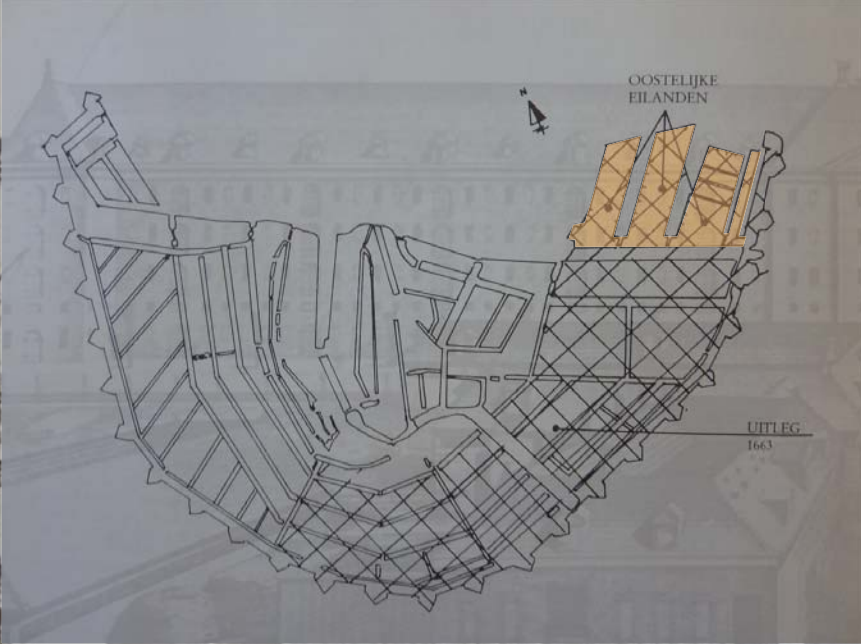
Geert Durk de Jong

Een verhoogd woon- en werkgebied opgedeeld door collectieve straten

Msc 4 - At home in the city - 02 11 2012





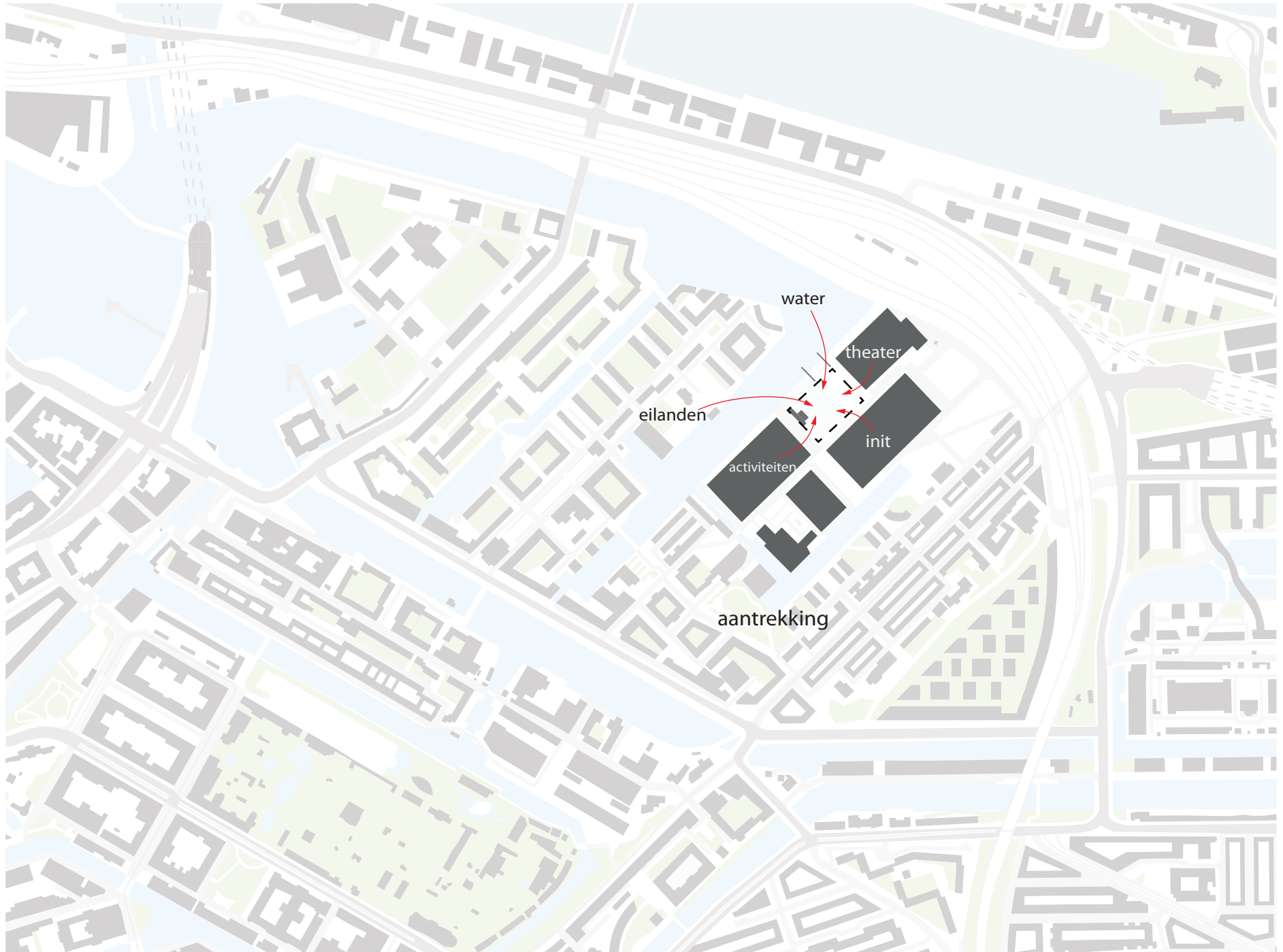




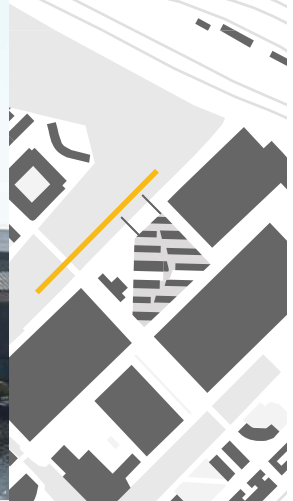
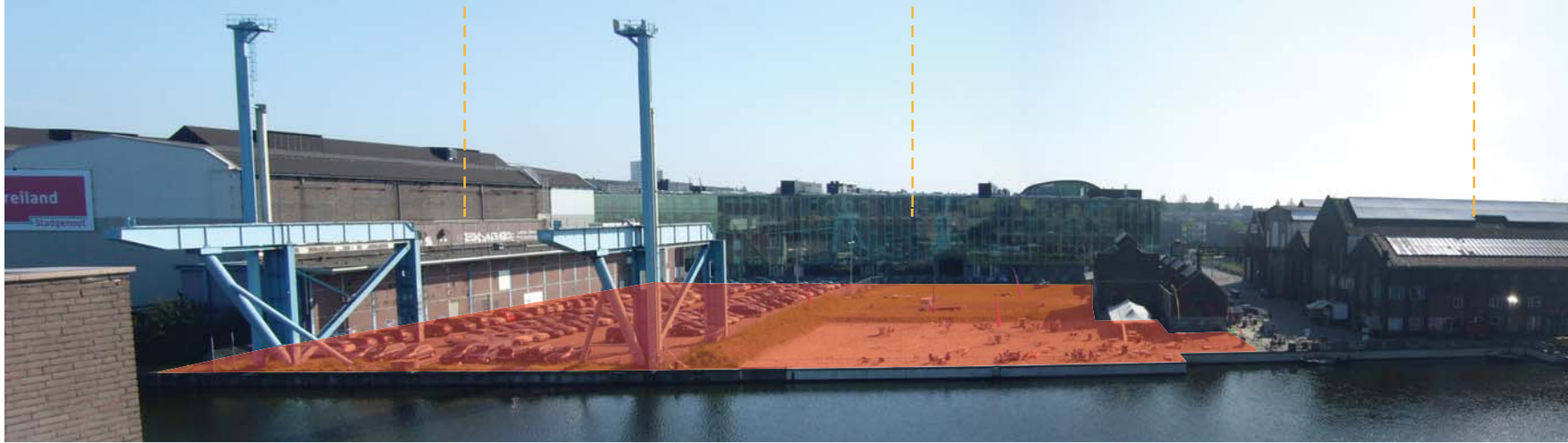
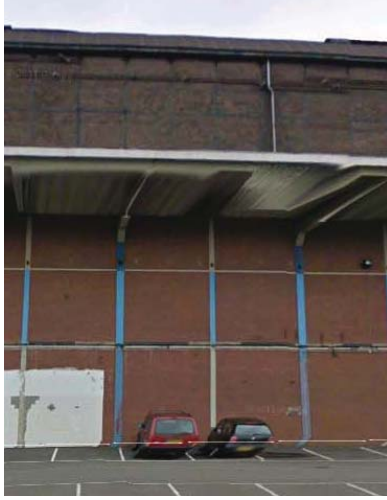


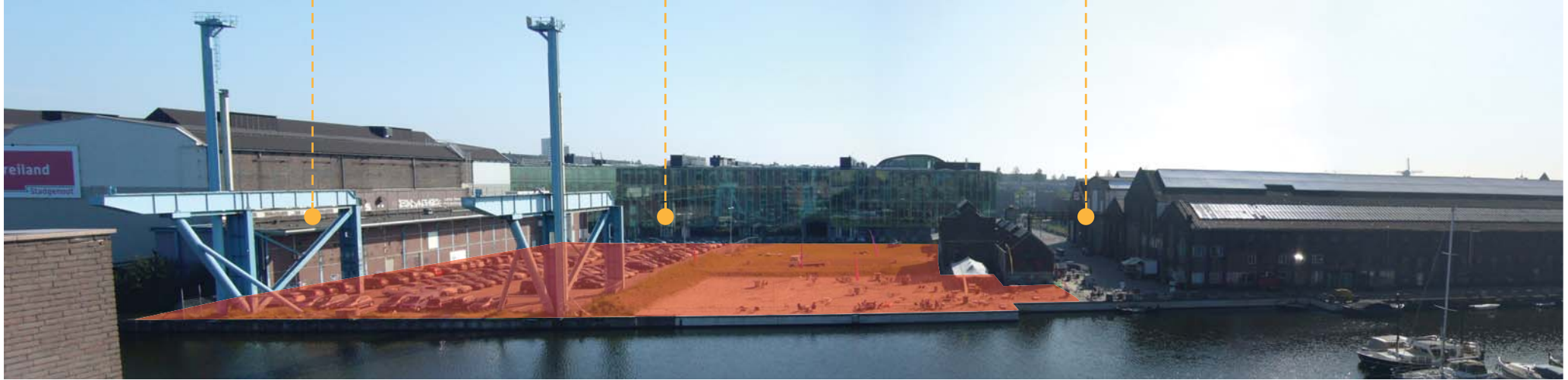


bereikbaarheid

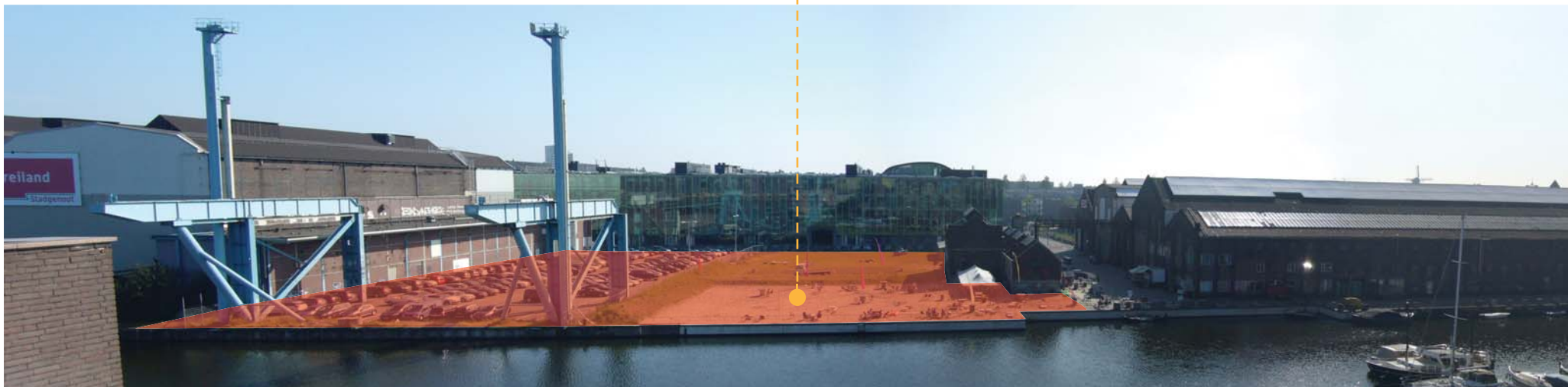






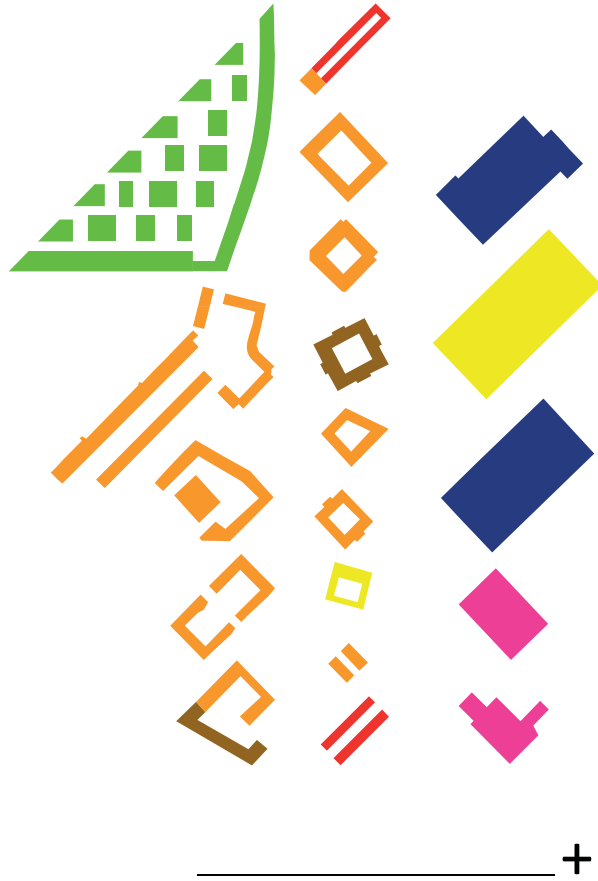












open - straat profiel



gesloten - werk volume



‘informele ruimtes’ (Urhahn Urban Design - Spontante stad 96)

*“Informele ruimtes kom je tegen op verborgen plekken in de stad, in de **periferie** van de hoofdstructuur van straten en stadspleinen. Kenmerkend is dat ze **beheerd worden door de omliggende gebruikers** en niet belast zijn met functionele eisen vanuit verkeer. Deze eigenschappen zorgen ervoor dat zulke plekken **uitnodigen tot spontane en soms gezamenlijke activiteiten**”*



Rozenstraat - Amsterdam

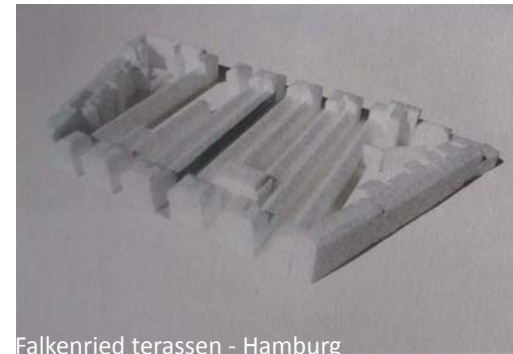


informele ruimte:
opeenvolgend en dubbel gebruik





Rozenstraat - Amsterdam



Falkenried terrassen - Hamburg

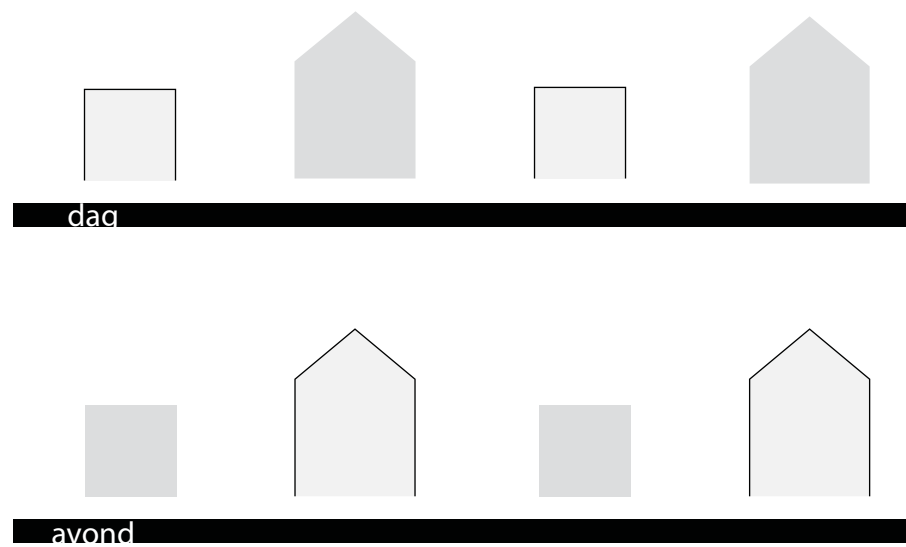


informele ruimte:
opeenvolgend en dubbel gebruik



straat:
collectieve ontsluiting en tuin





combinatie van wonen en werken
door een gezamenlijk straatprofiel



creeren van groot volume



aantrekkingskracht Roest en strand - behouden



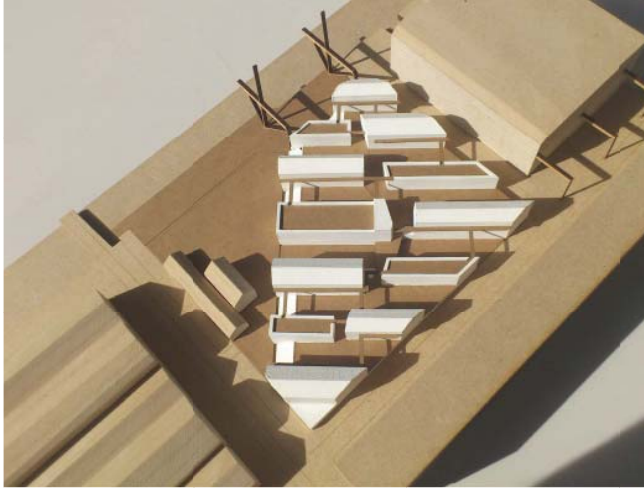
dichte karakter straat zijde



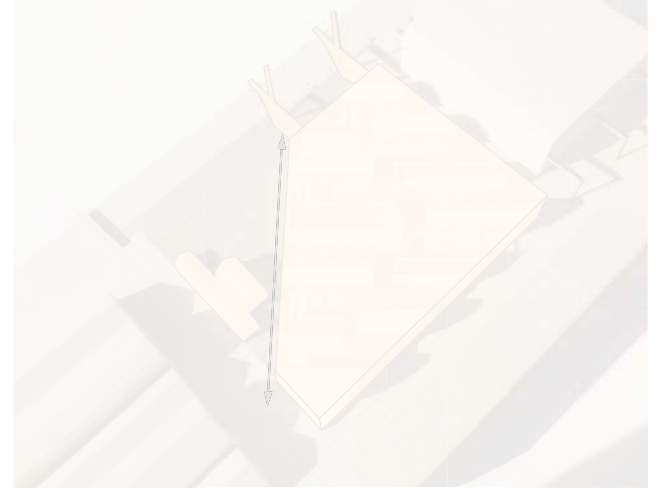
toepassing straat typologie



draaing voor karakteristieke zichtlijnen



creëren stedenbouwkundig volume



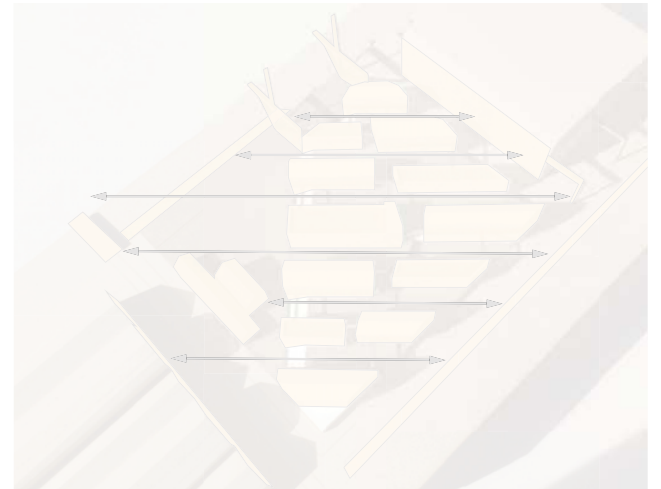
aantrekkingskracht Roest en strand - behouden



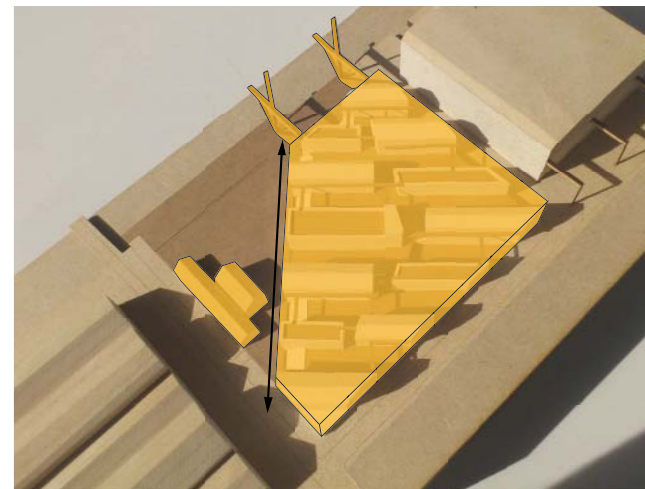
dichte karakter straat zijde



toepassing straat typologie



draaing voor karakteristieke zichtlijnen



creëren stedenbouwkundig volume

behoud aantrekkingskracht Roest en Strand



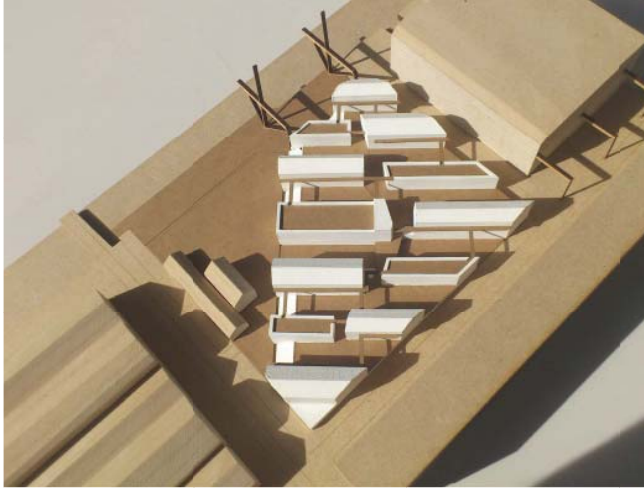
dichte karakter straat zijde



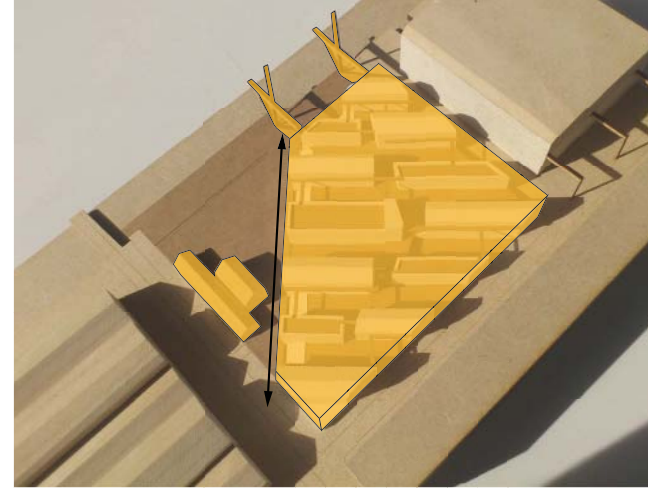
toepassing straat typologie



draaing voor karakteristieke zichtlijnen



creëren stedenbouwkundig volume



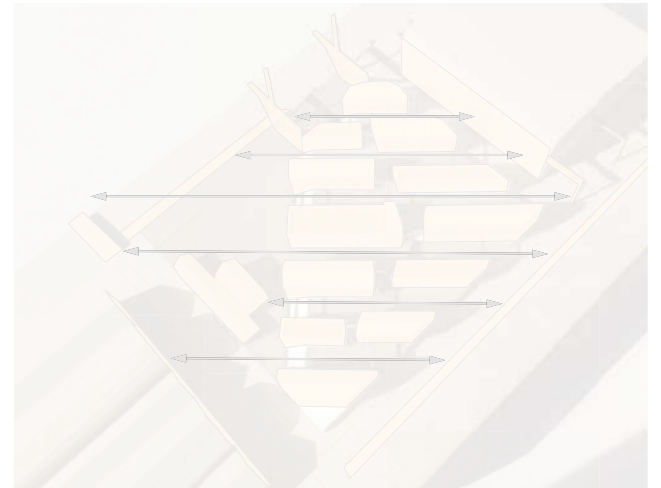
behoud aantrekkingskracht Roest en Strand



creëren dicht karakter straat zijde



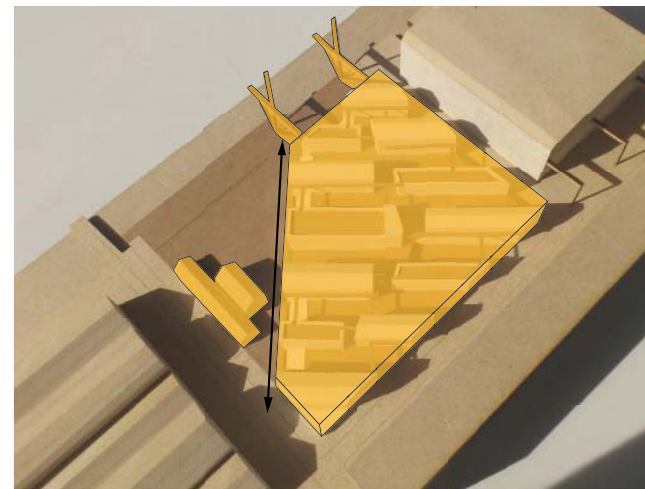
toepassing straat typologie



draaing voor karakteristieke zichtlijnen



creëren stedenbouwkundig volume



behoud aantrekkingskracht Roest en Strand



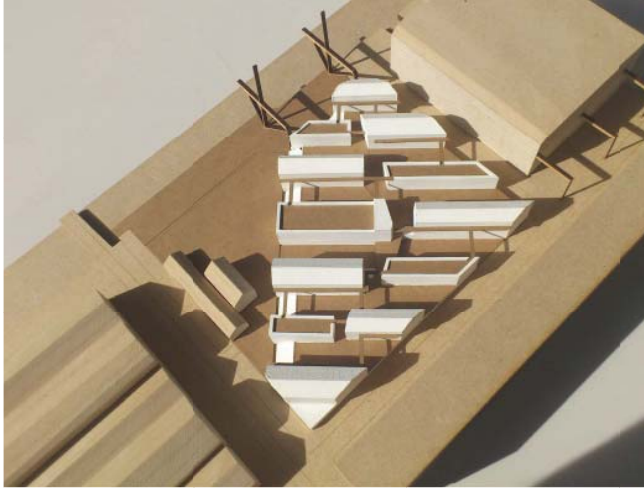
creëren dicht karakter straat zijde



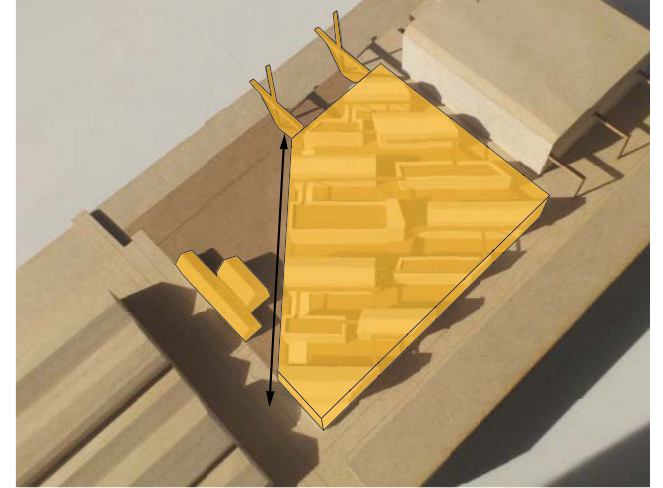
toepassing gezamenlijk straatprofiel



draaing voor karakteristieke zichtlijnen



creëren stedenbouwkundig volume



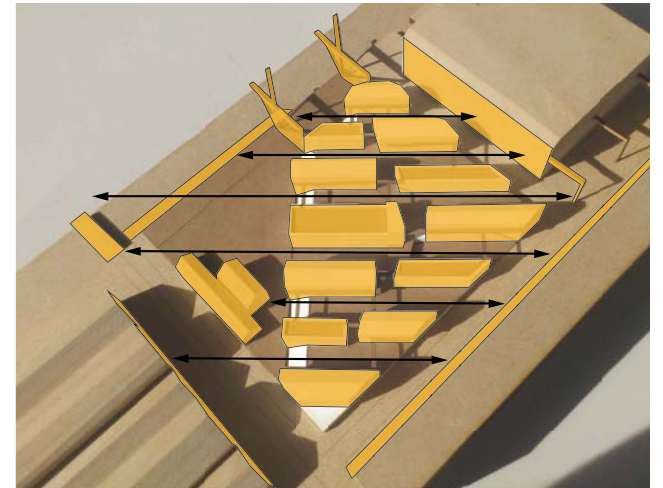
behoud aantrekkingskracht Roest en Strand



creëren dicht karakter straat zijde



toepassing gezamenlijk straatprofiel



draaing voor karakteristieke zichtlijnen



Kraan



Water



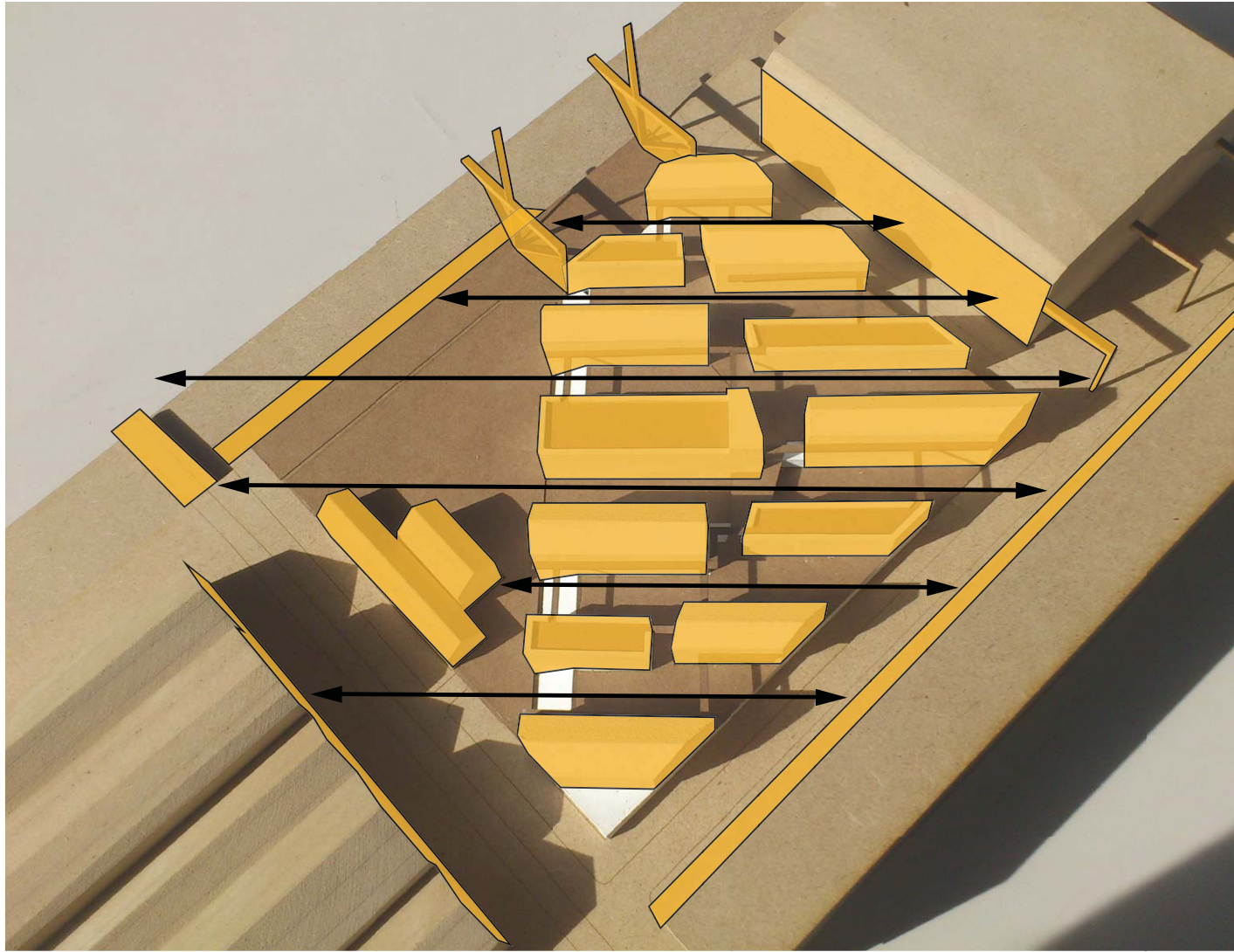
Brug



Roest



Gendt



Theater



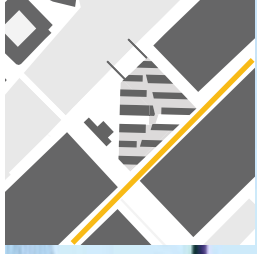
Frame

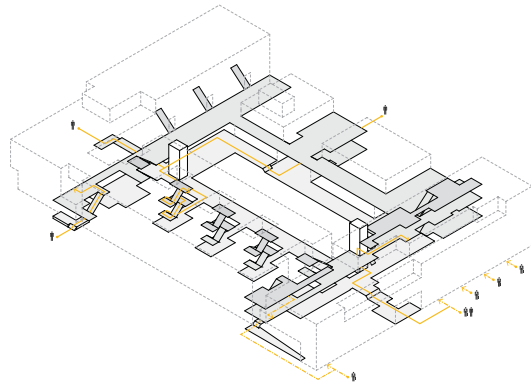


Init



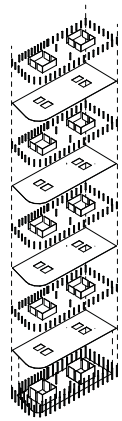




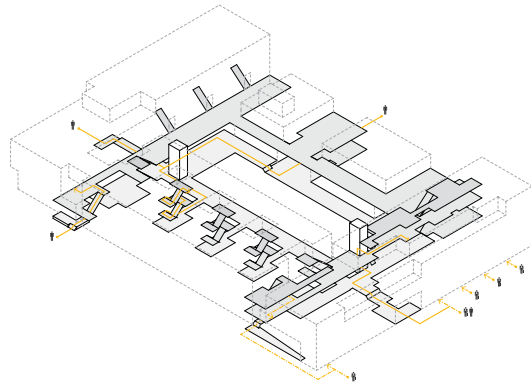


'Mixed-use in the case of flexible buildings'

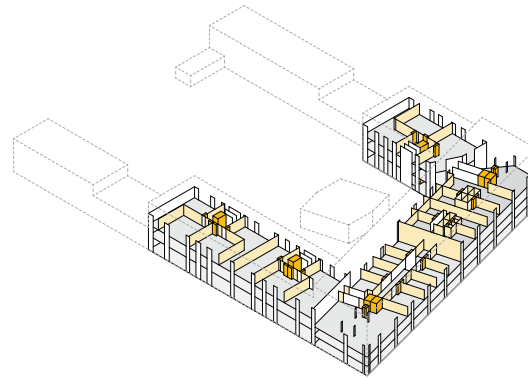
Which flexible aspects allow a building to combine housing and work spaces (in changeable configurations)?



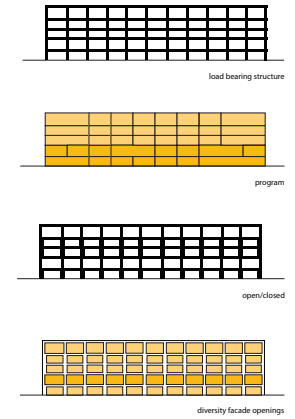
Structure



Routing



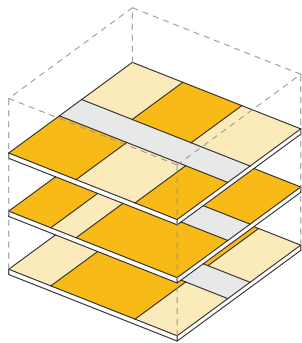
Services



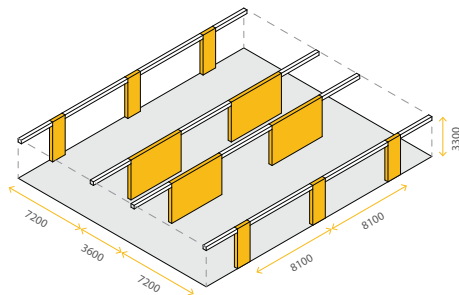
Skin

‘wonen versus werken’

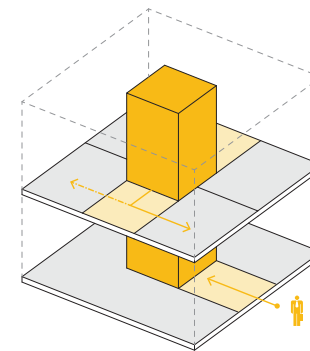
*Functionele **uitwisselbaarheid** is niet het uitgangspunt. Wonen en werken worden uit elkaar ‘getrokken’ in verschillende **volumes** met behoud van **relatie en interactie**.*



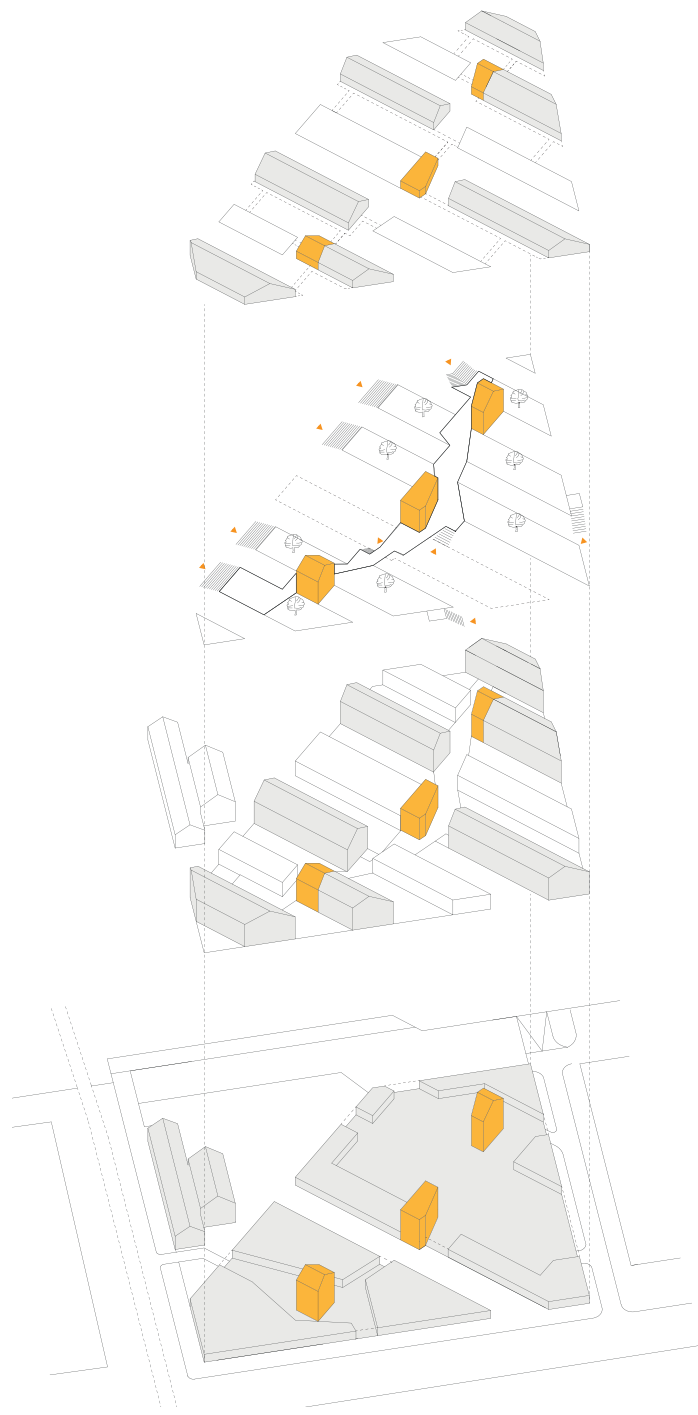
belangrijke rol van ontsluiting in
het ombineren van wonen en
werken

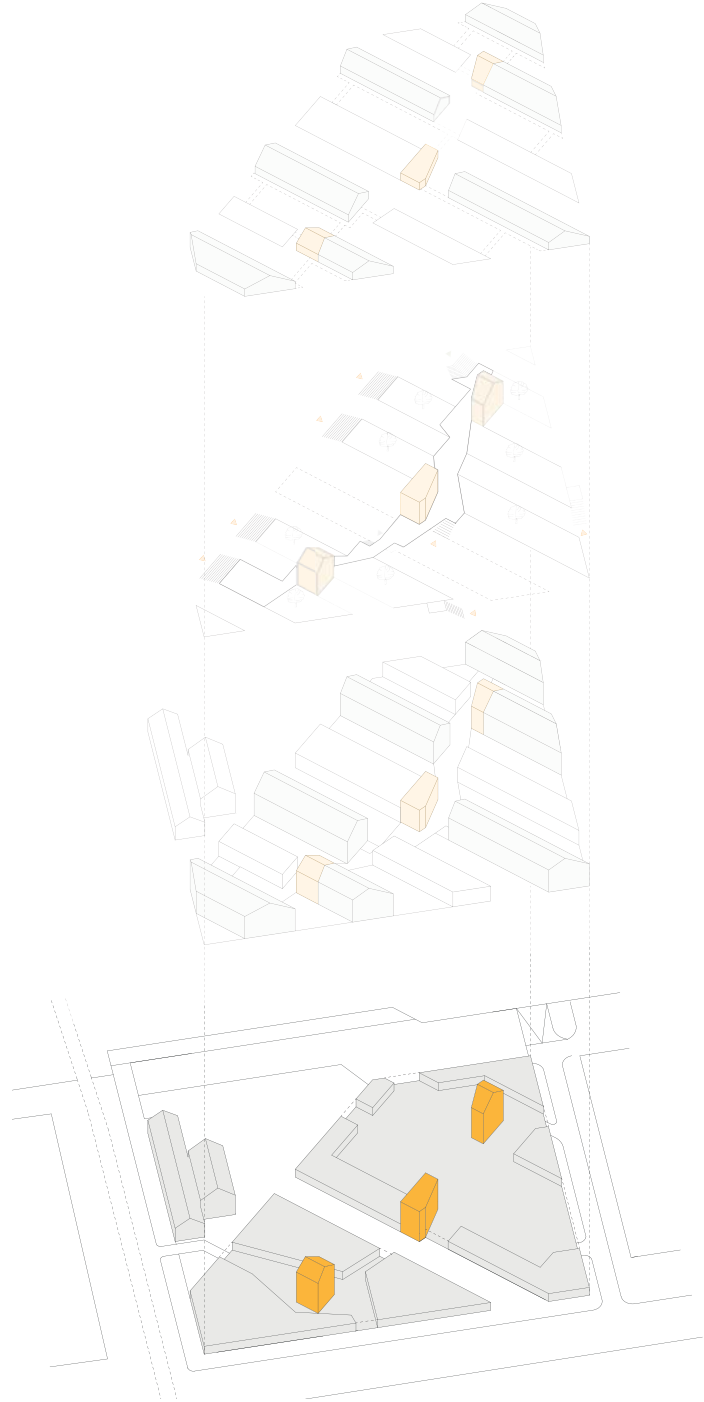
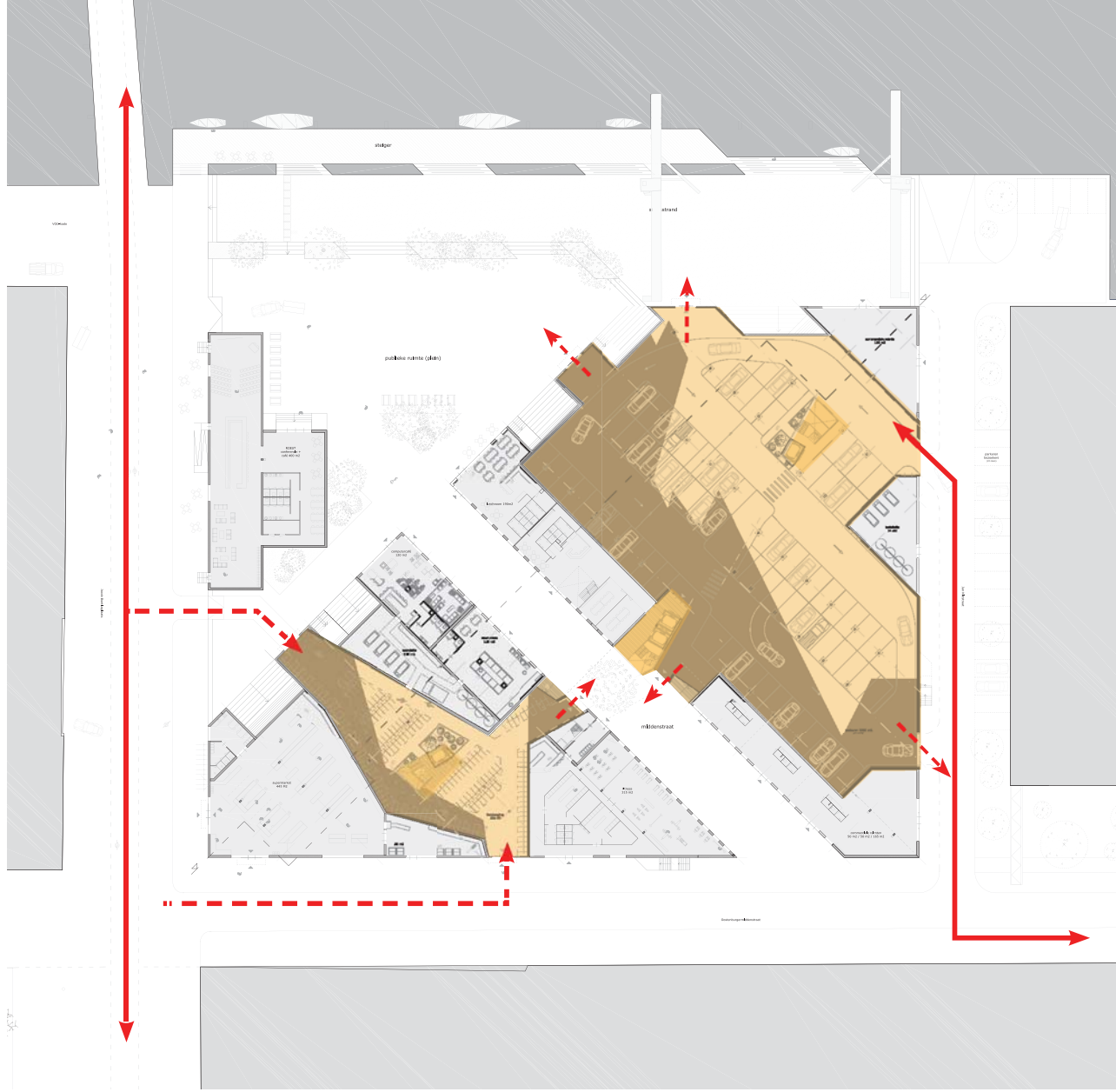


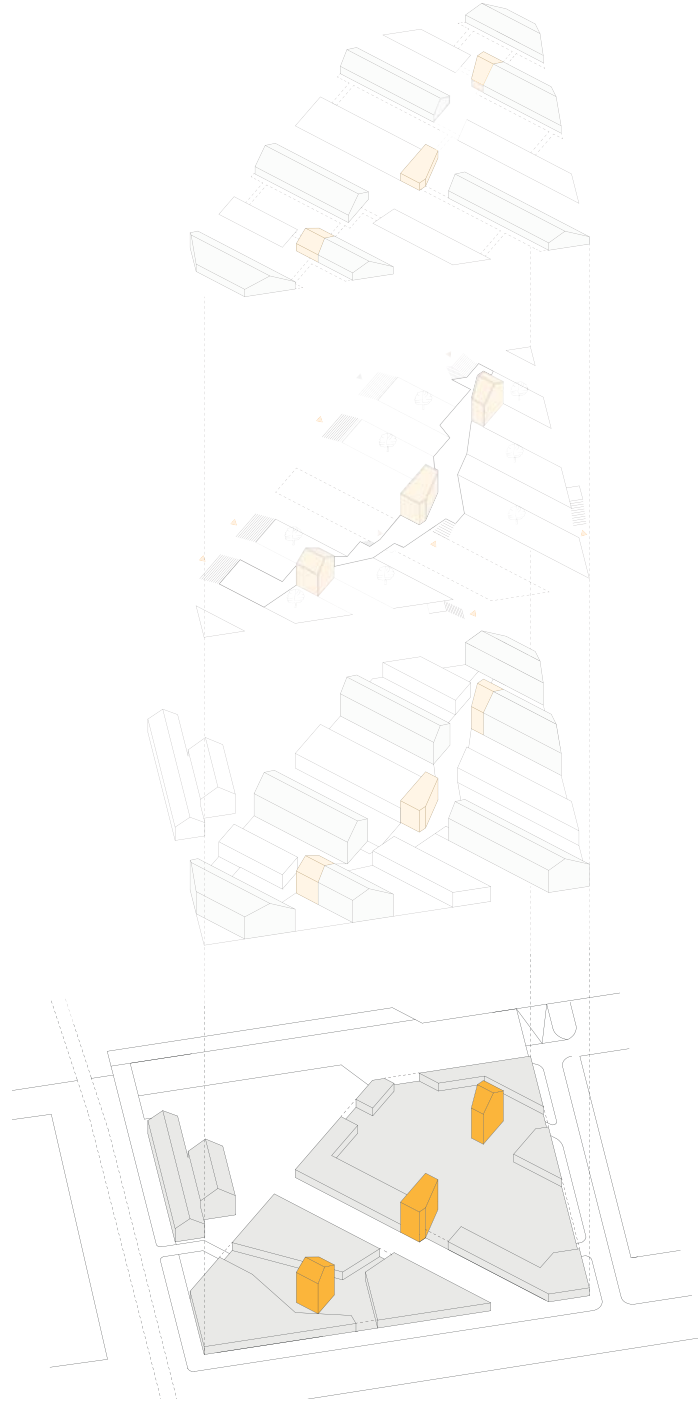
aanpasbaarheid van constructie-
systemen voor uitwisselbaarheid
wonen en werken

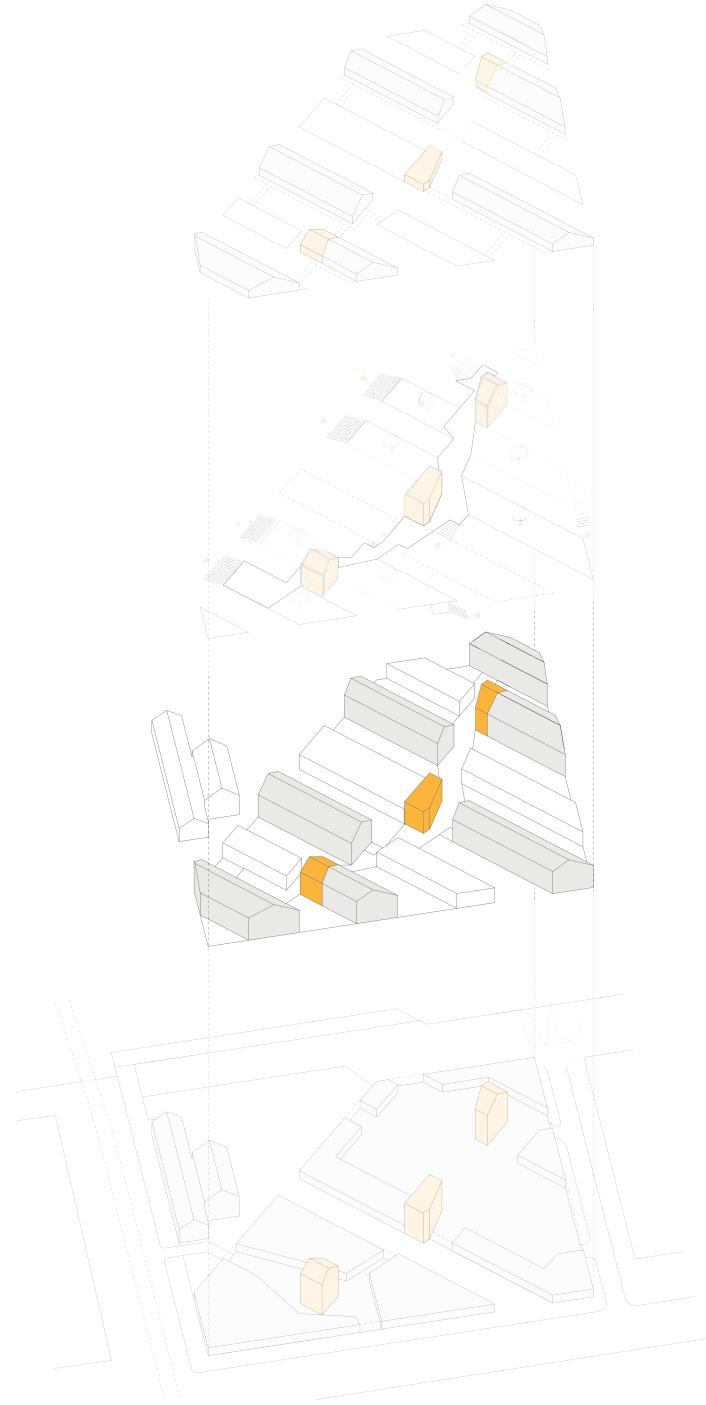
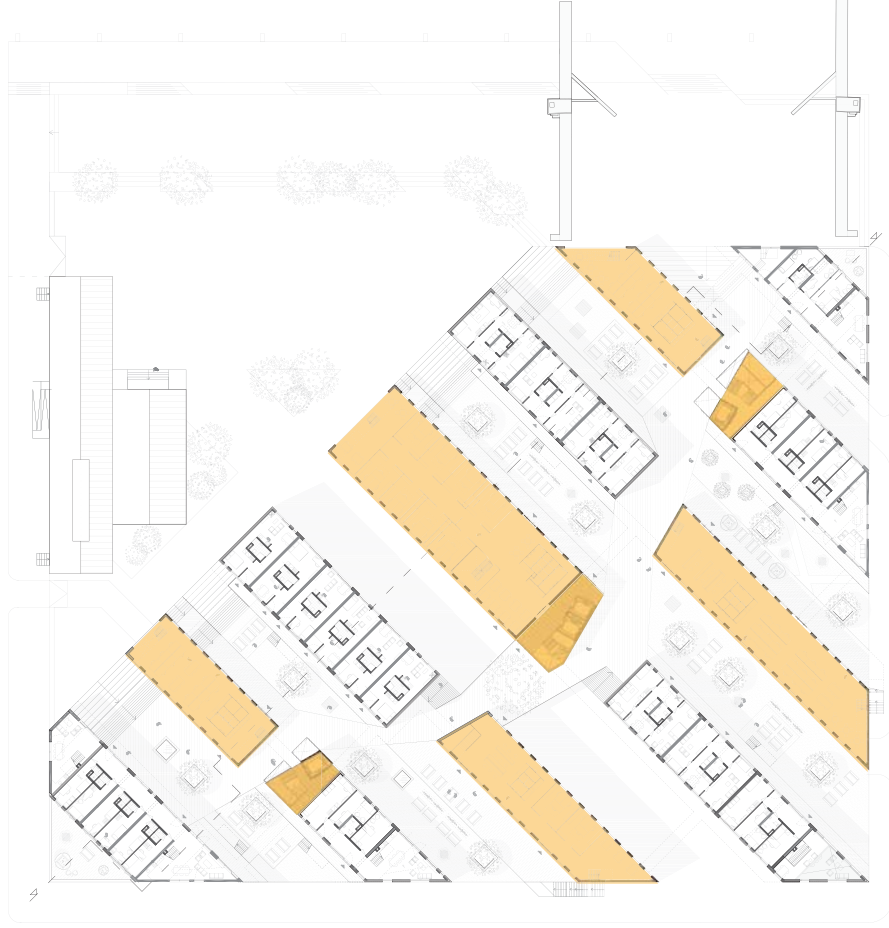


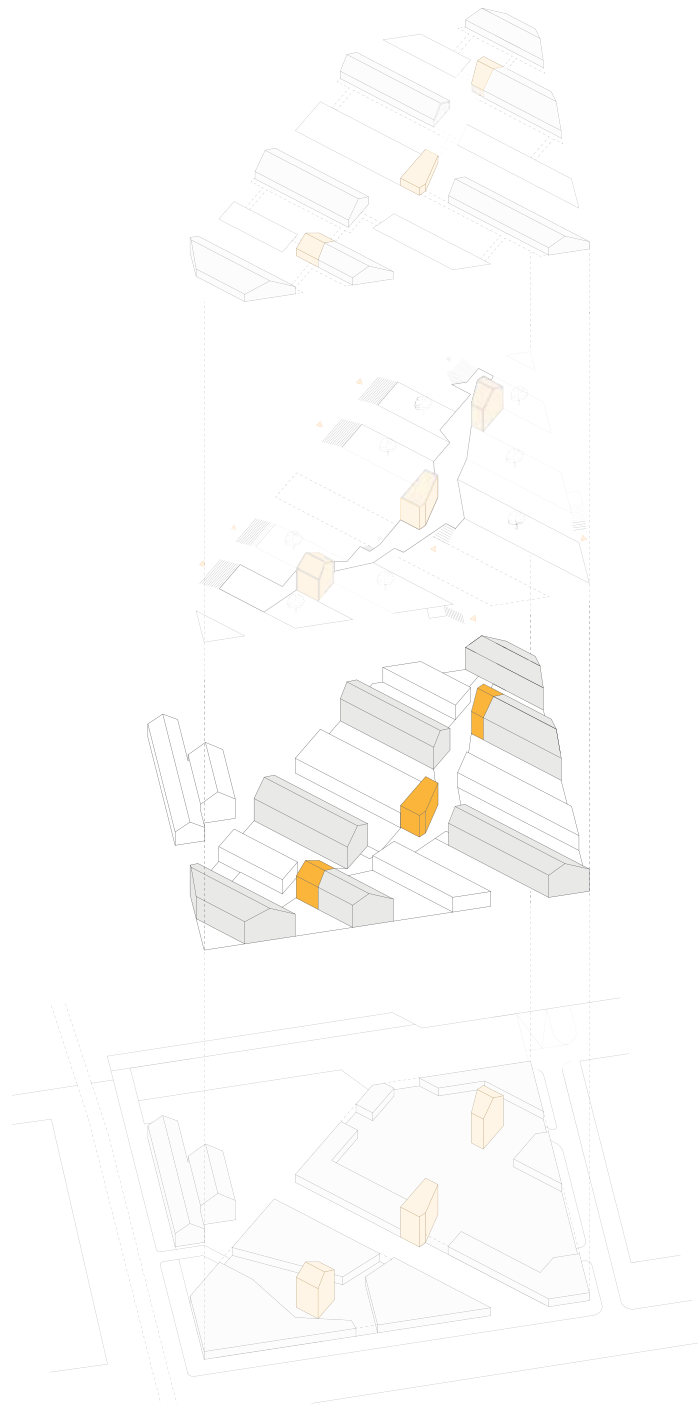
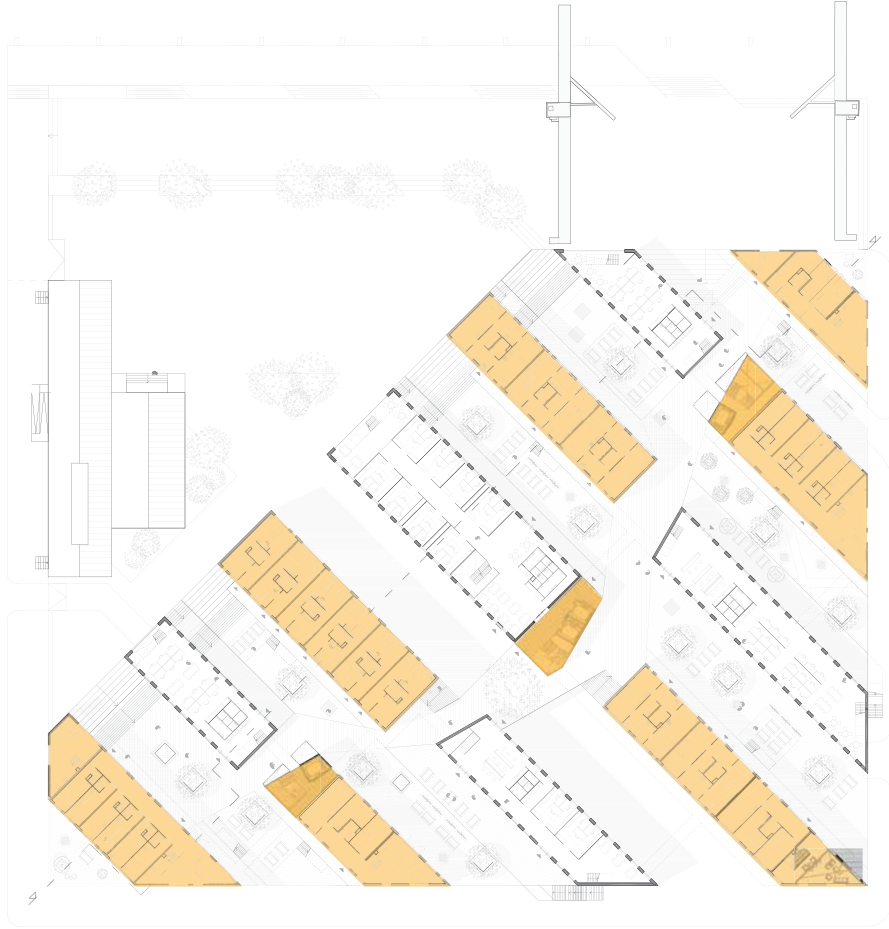
combineren verticale ontsluiting
wonen en werken

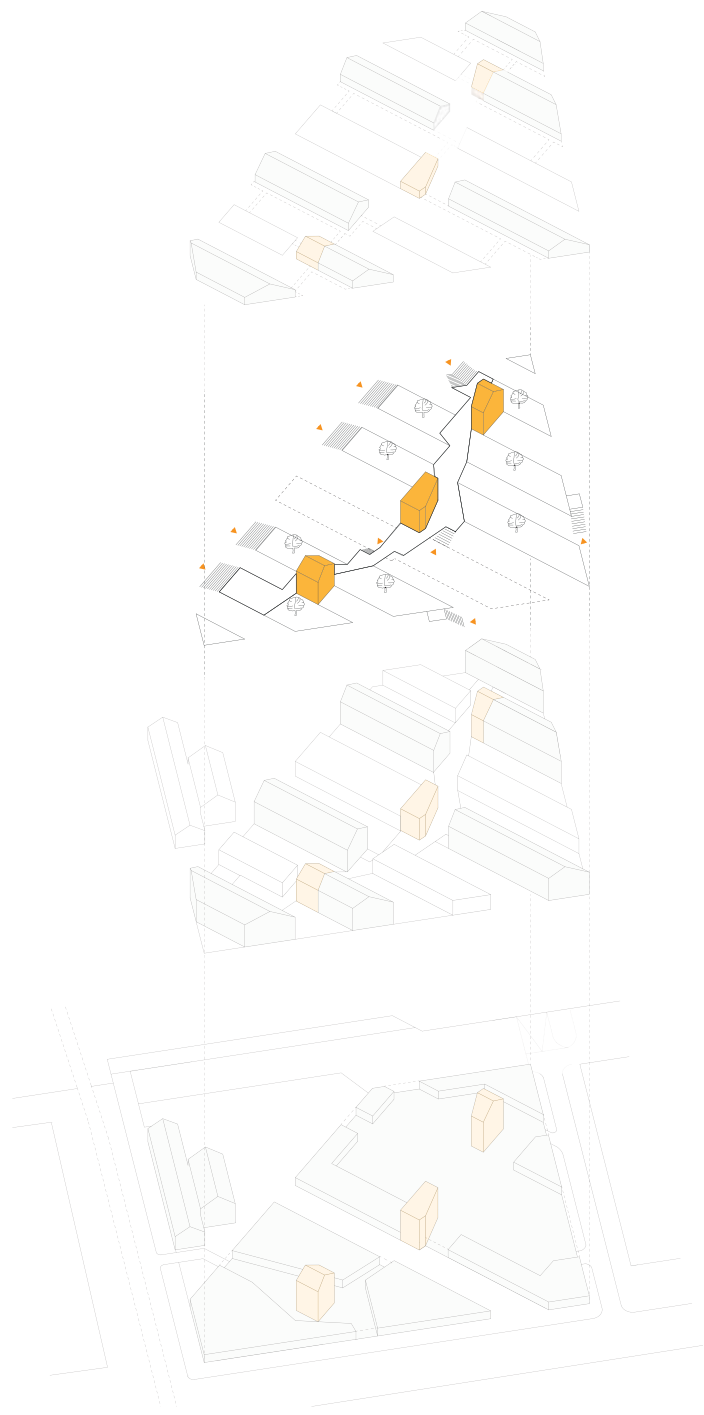
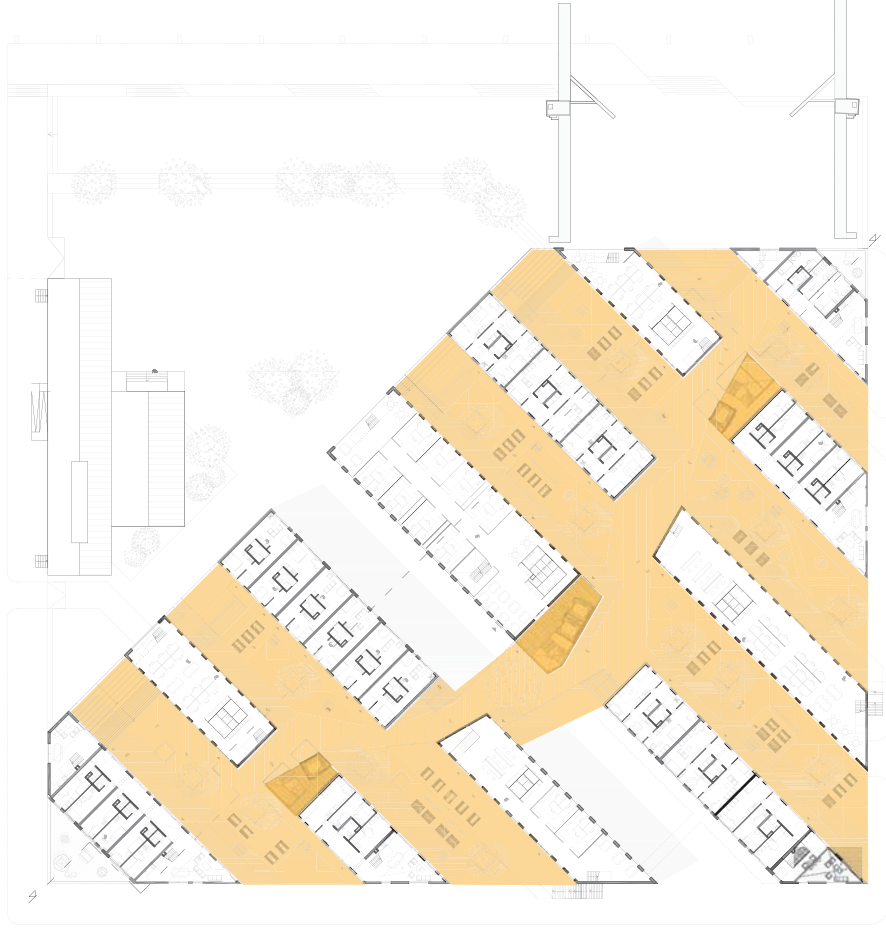


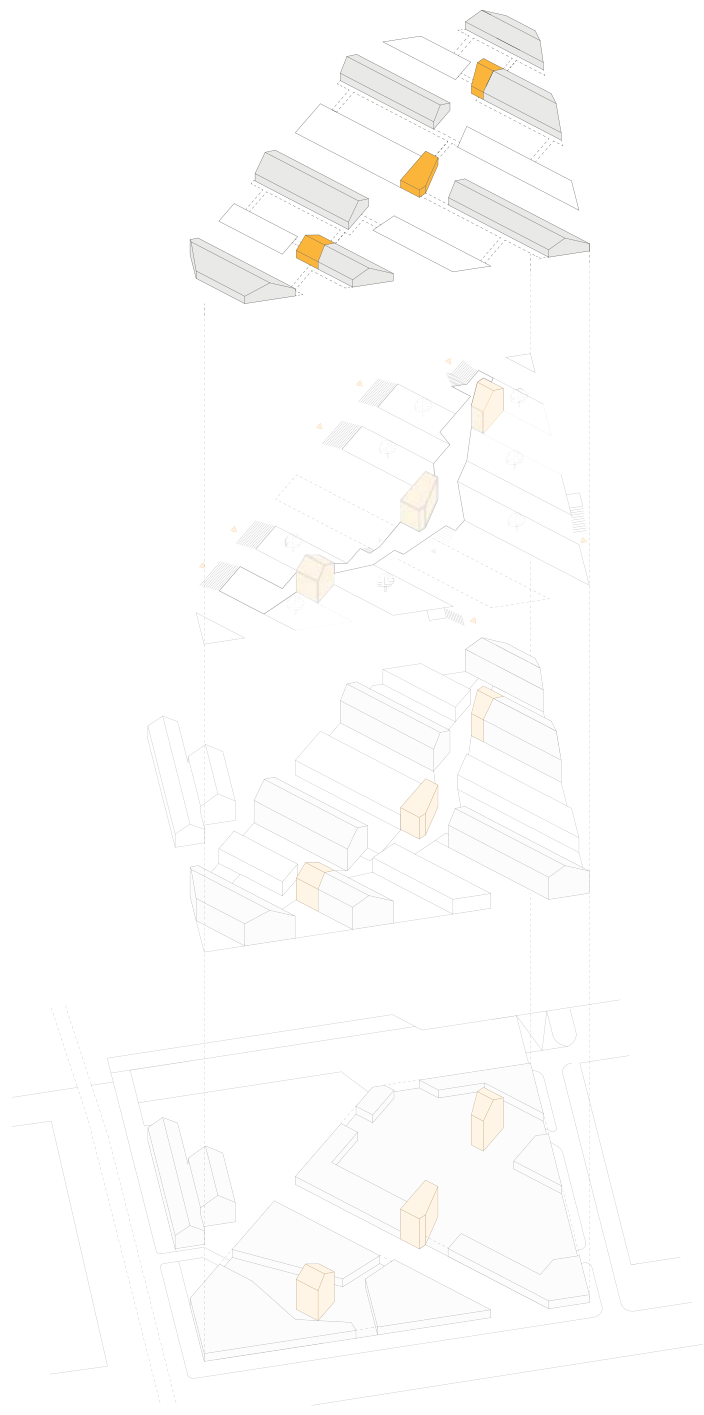
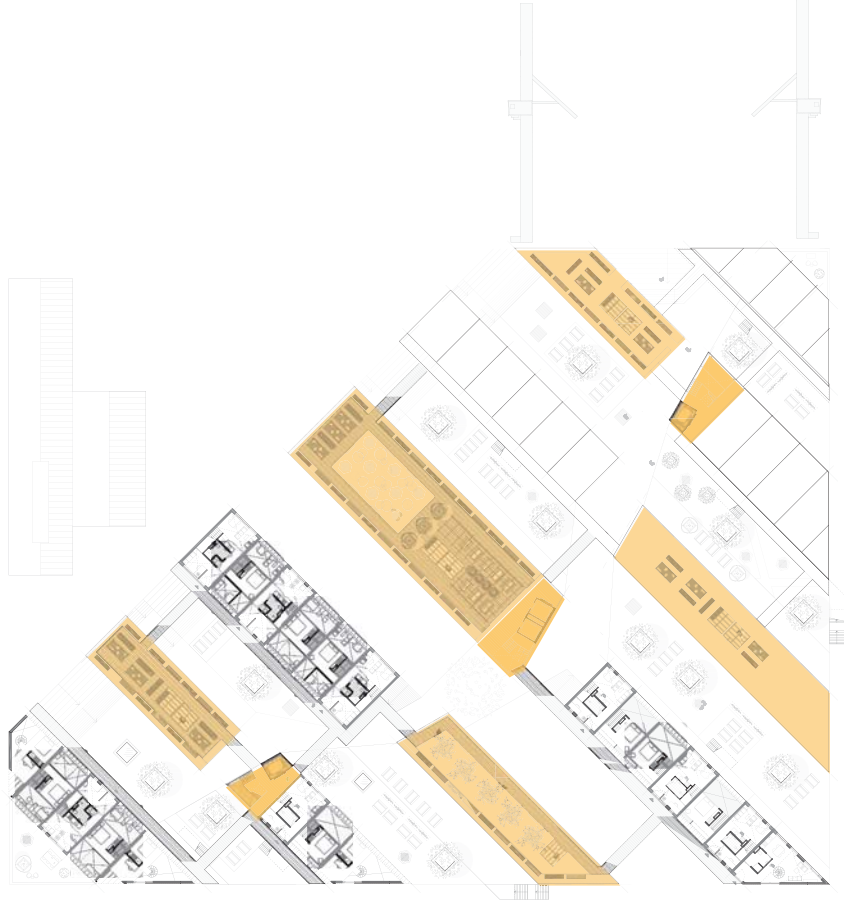


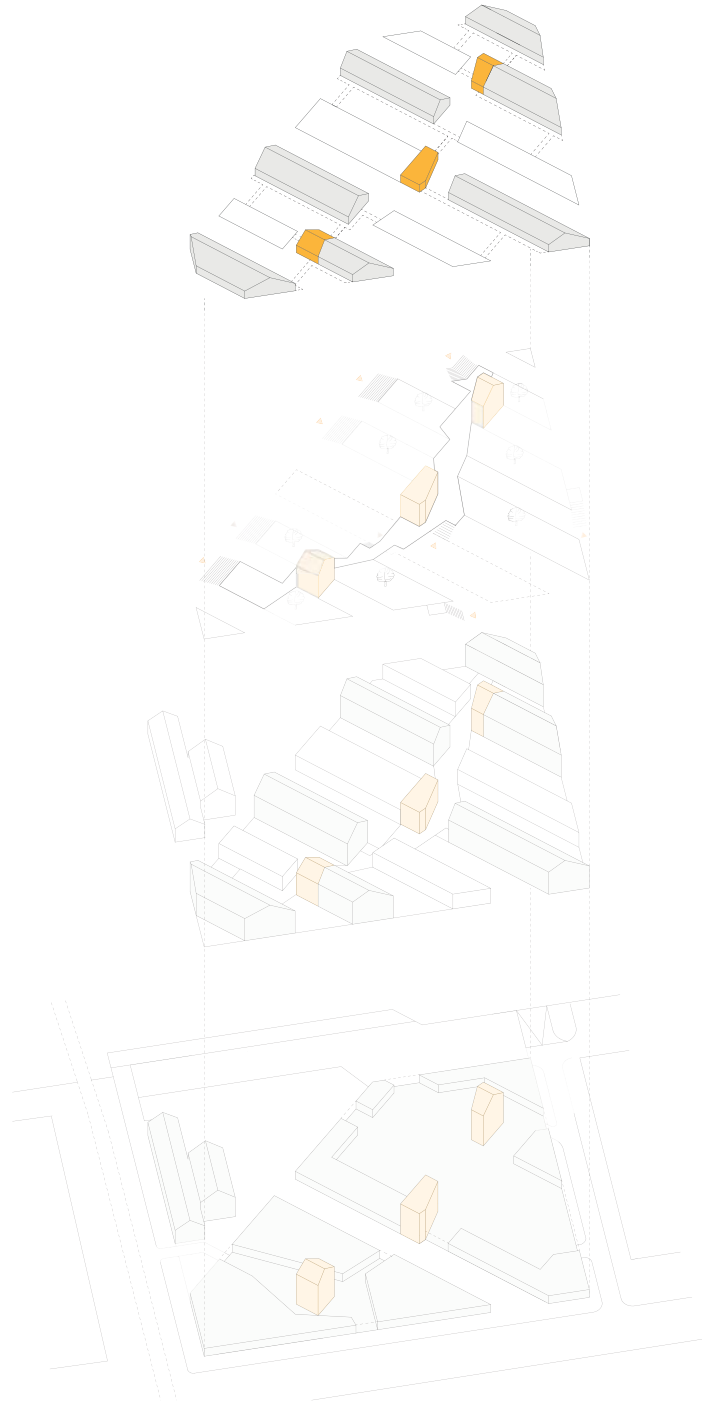
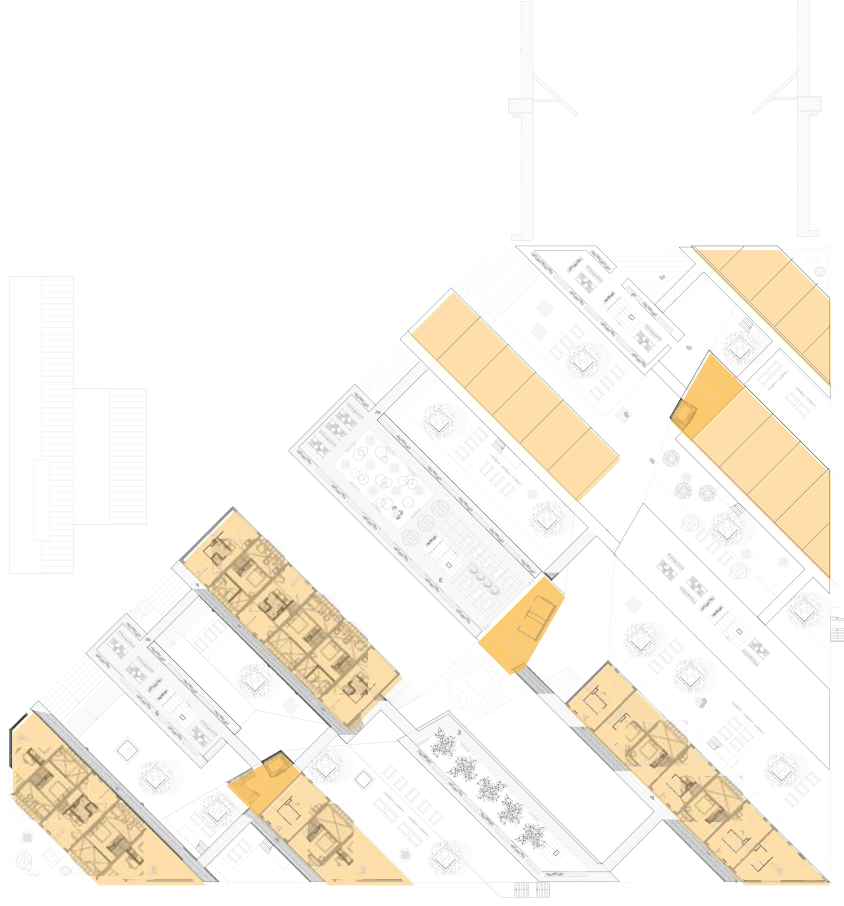




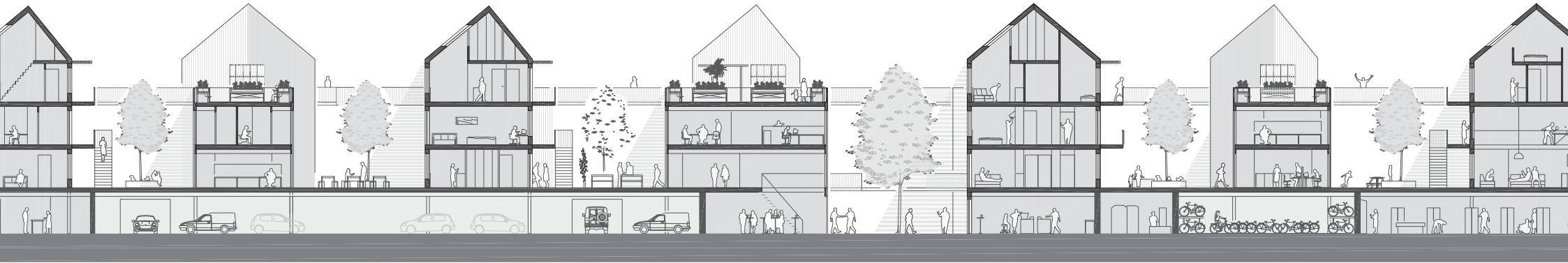




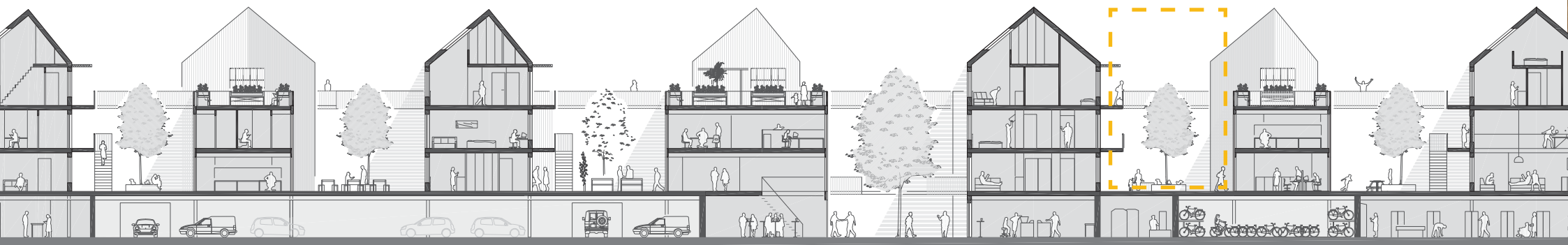




De 'woon werk straat'



collectieve ontsluiting &
opeenvolgend, en dubbel gebruik gedurende de dag







WOODWERK ST. BAVANT, © East Dunke, Jong





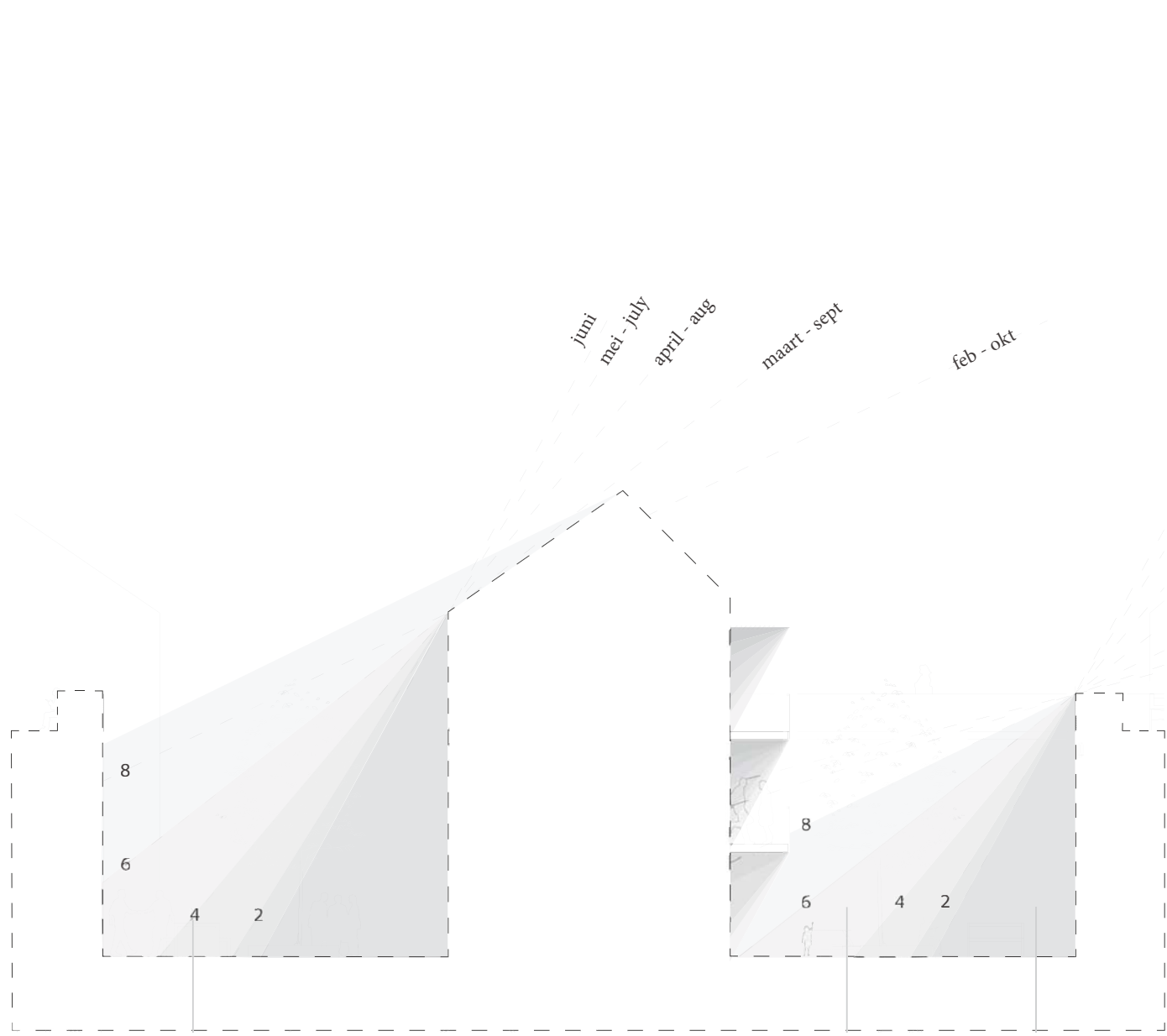
wonen

collectieve ruimte voor
studie, eten, relaxen

werken

collectieve ontsluiting met plaats
voor werk, luch, ontmoeten

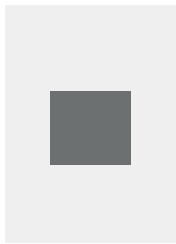






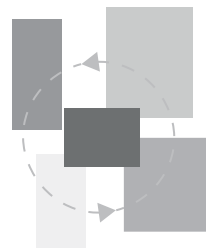
Typologieën doelgroep 'jong'

- *Aantrekkingskracht locatie*
- *Binnen stedelijke ring Amsterdam*
- *combinatie met werken*



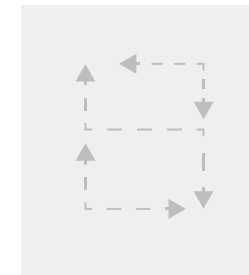
kern

Een centrale kern in iedere woning biedt plaats aan sanitair en schacht, en kan gebruikt worden voor aankoppeling van leidingen, keuken, kast en trap.



openheid in gebruik

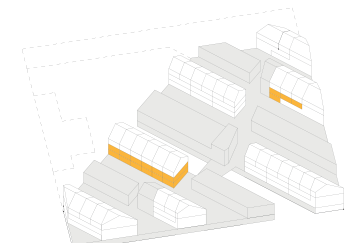
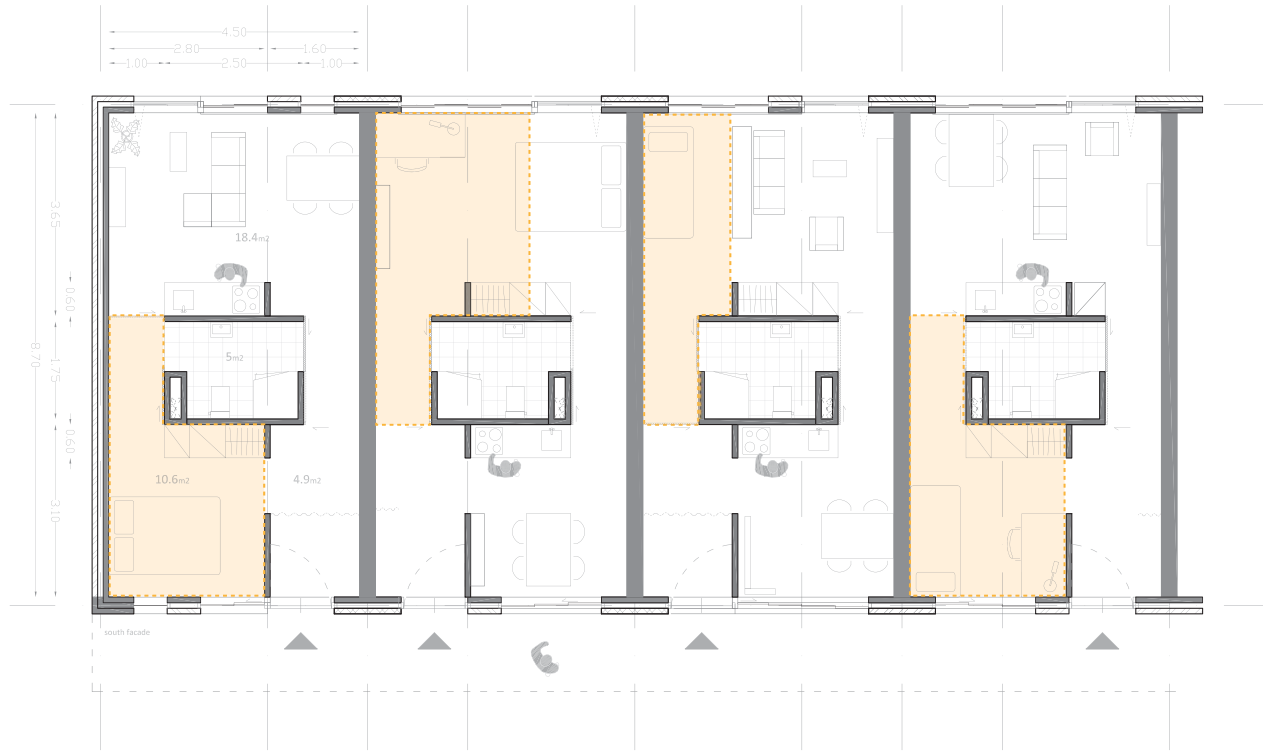
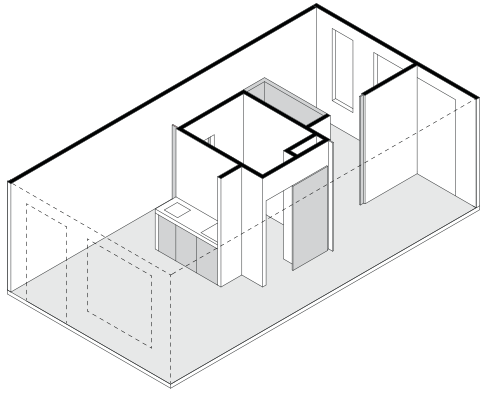
Door gelijkheid van ruimten in zowel afmetingen als de verhouding tot de centrale kern, ontstaat een 'open' en niet vooraf bepaald functioneel gebruik.



circulatie

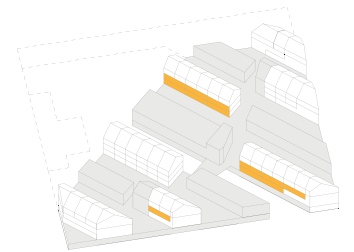
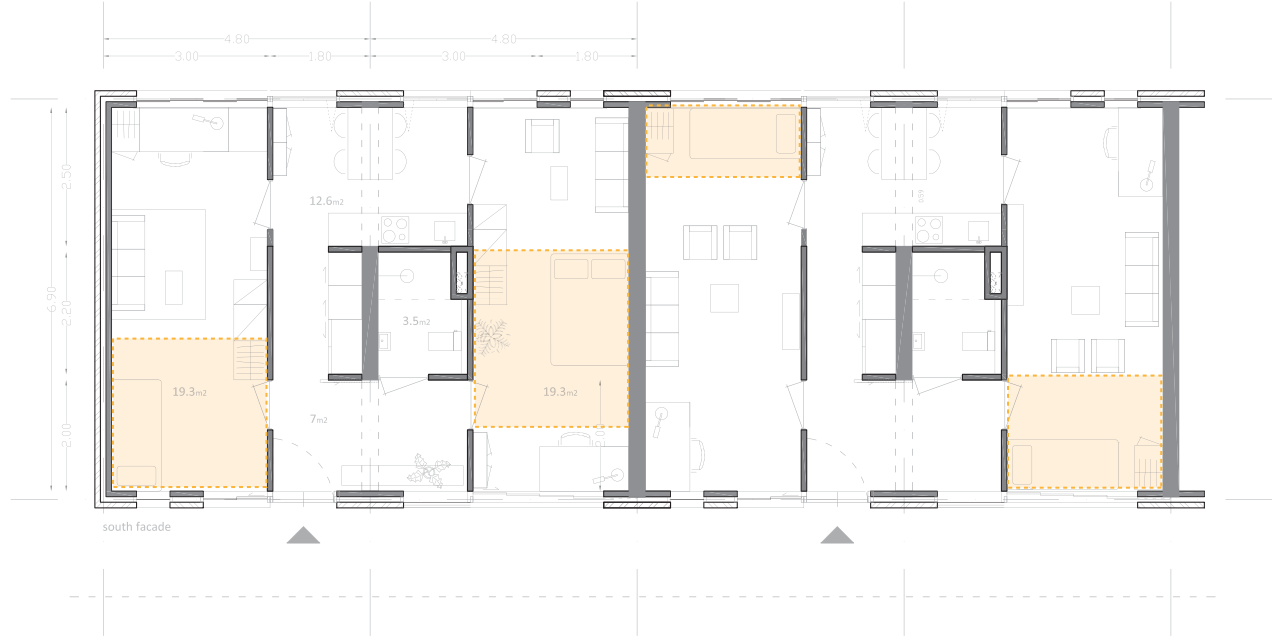
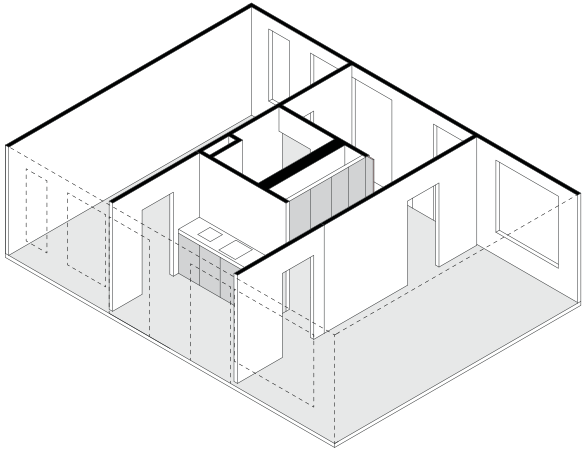
Door verschillende doorgangen tussen ruimten kunnen ruimten samengevoegd en verbonden worden. Dit bevordert het 'open' gebruik.

SINGLE | 39 m²

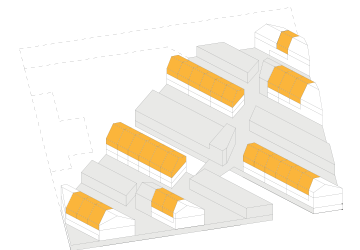
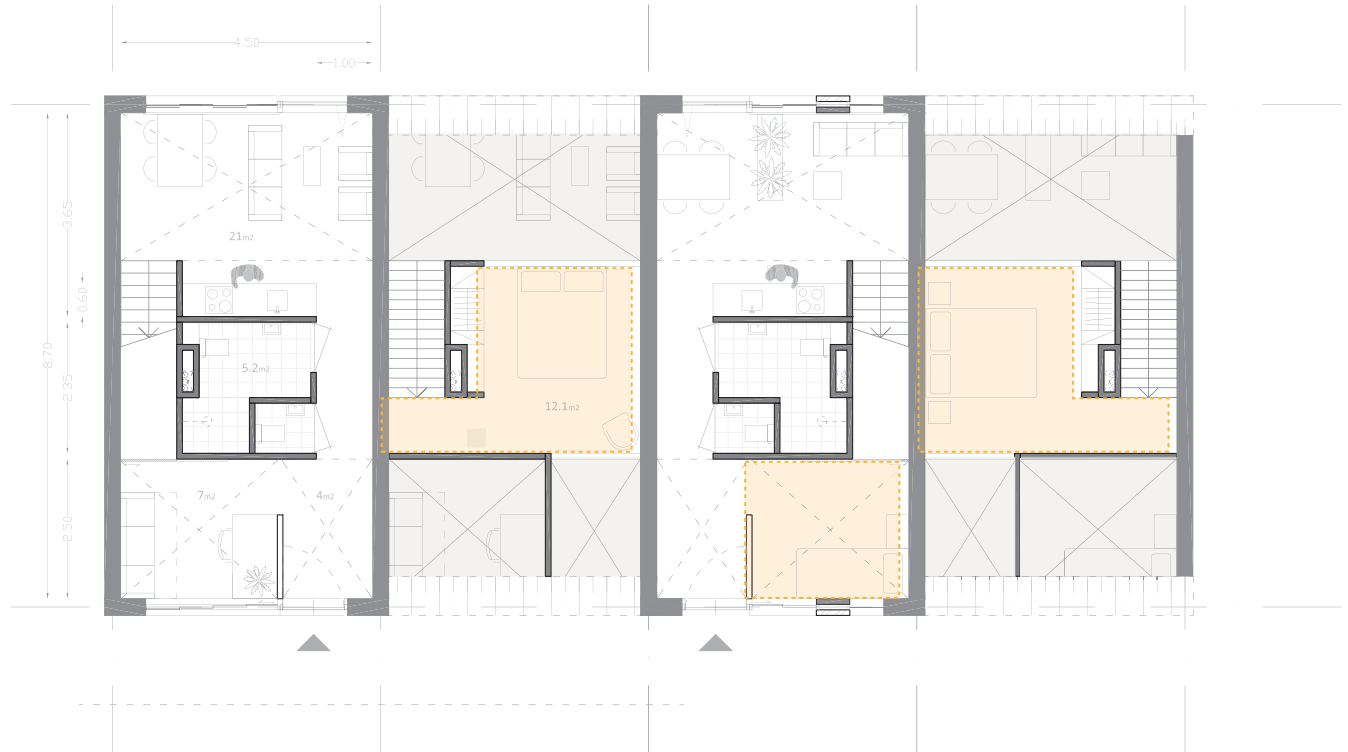
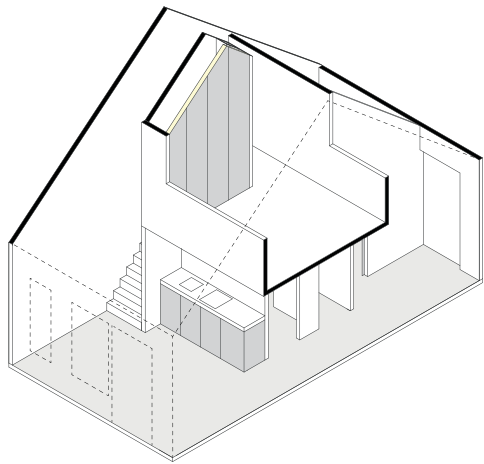


SHARED | 61.7 m²

WOONWERK STRAAT Geert Durk de Jong

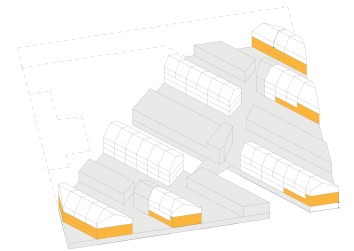
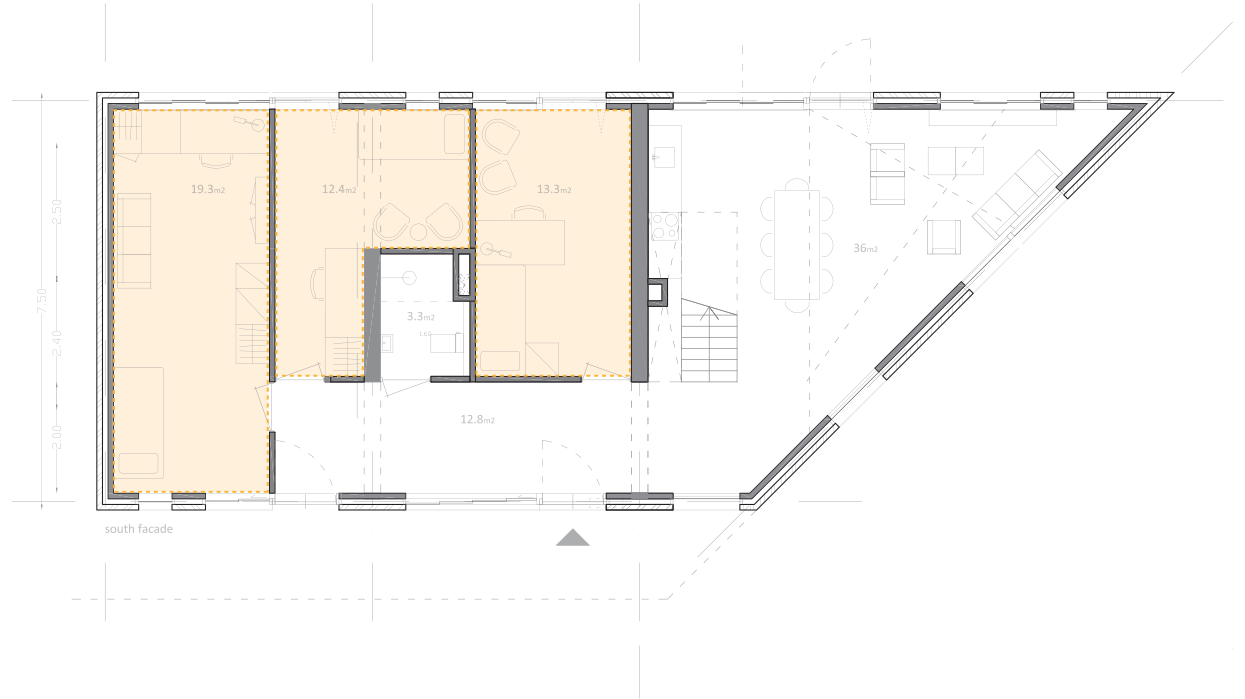
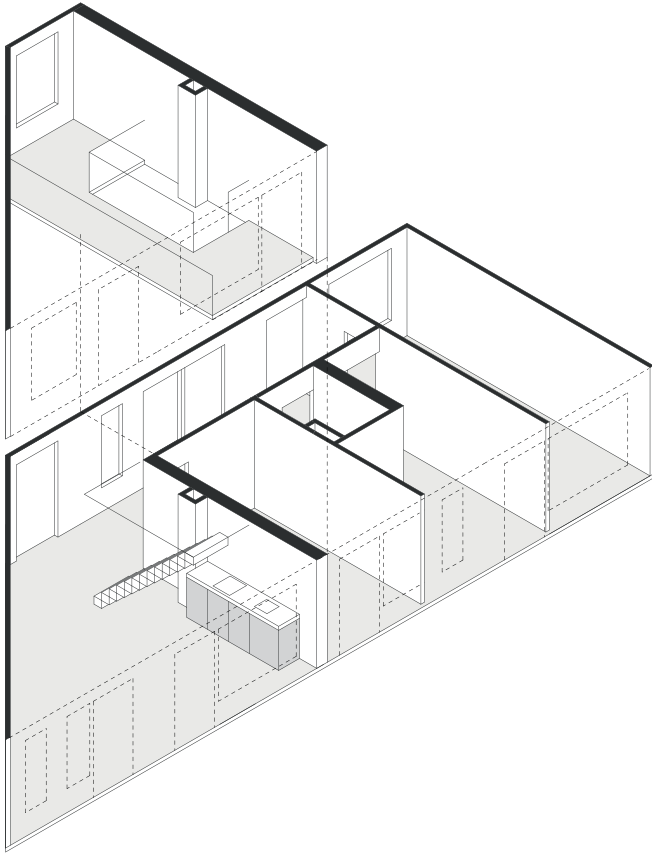


COUPLE | 49.3m²

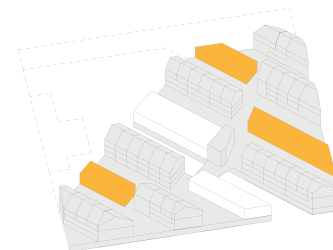
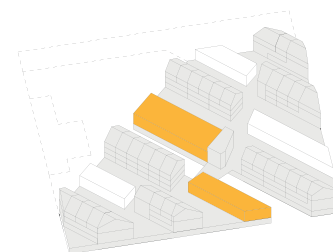
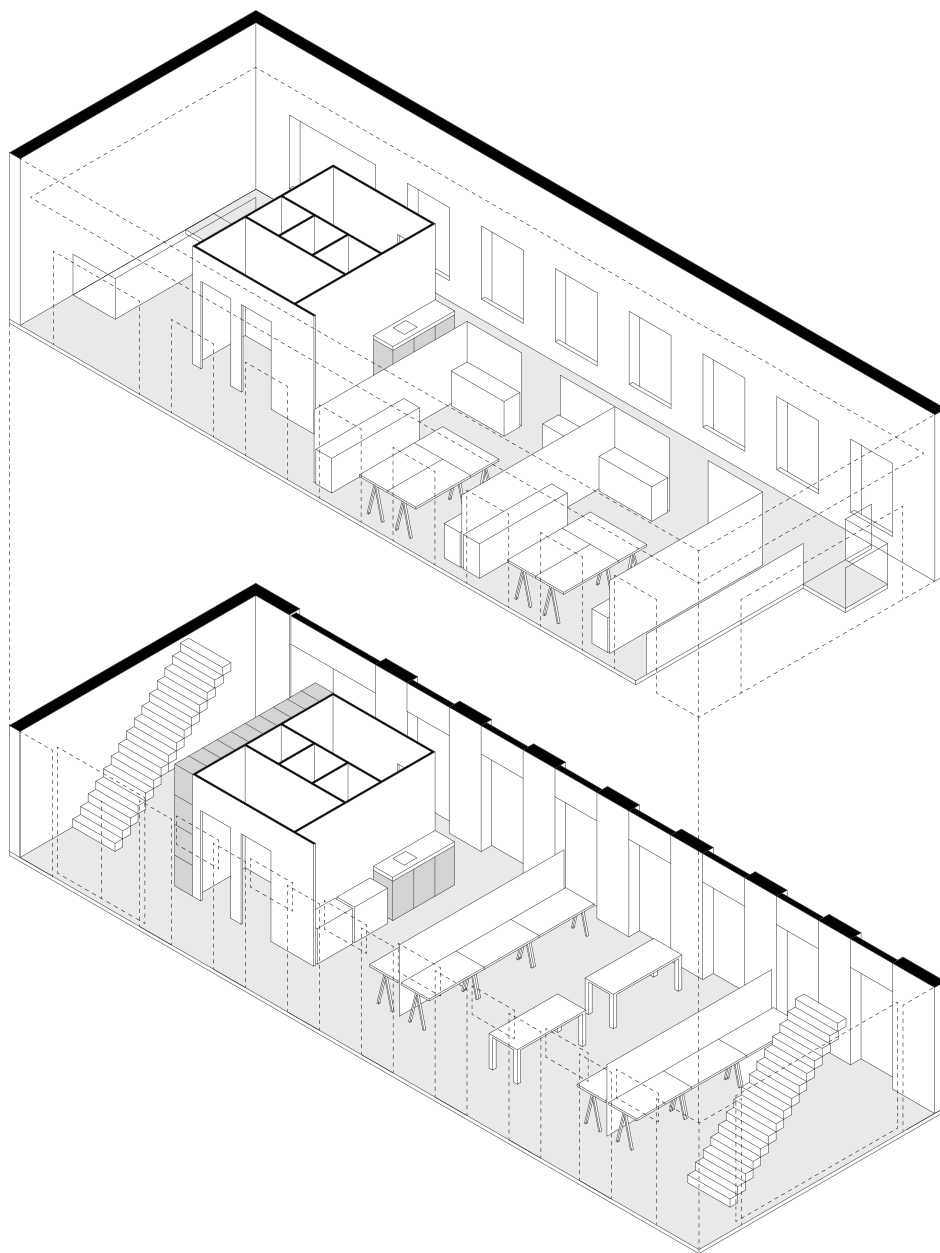


GROUP | 102 m²

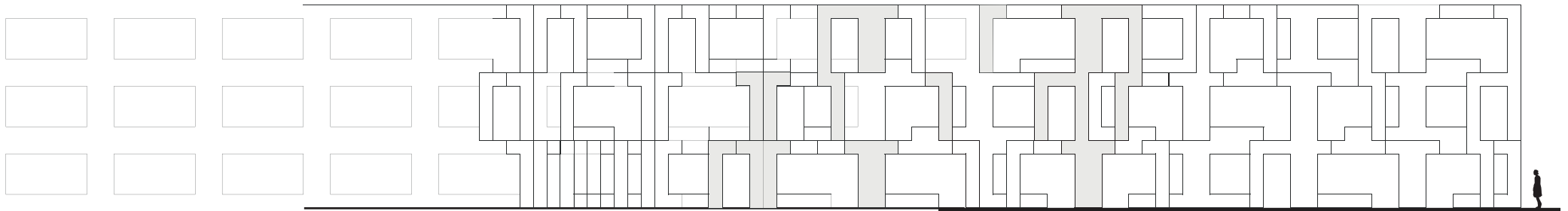
WOONWERK STRAAT Geert Durk de Jong



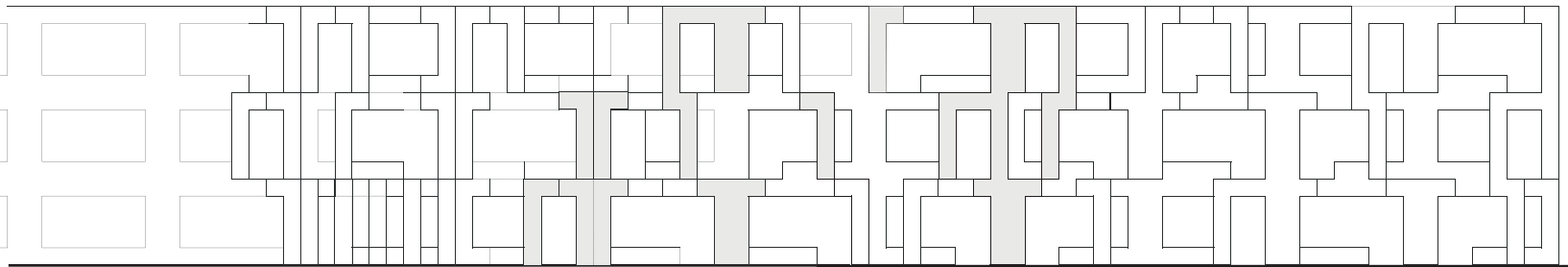
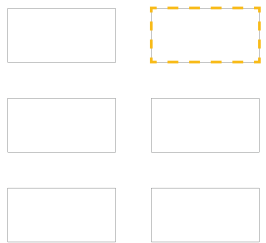
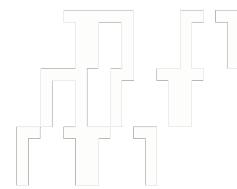
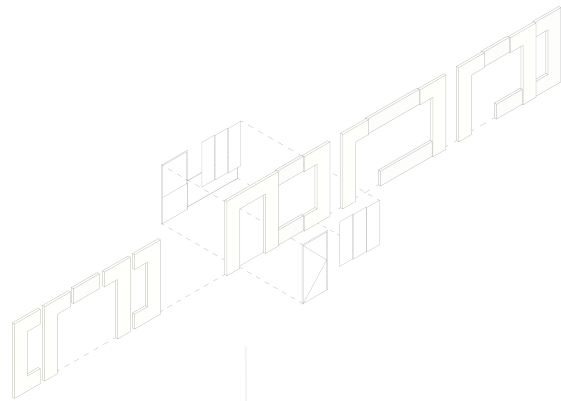
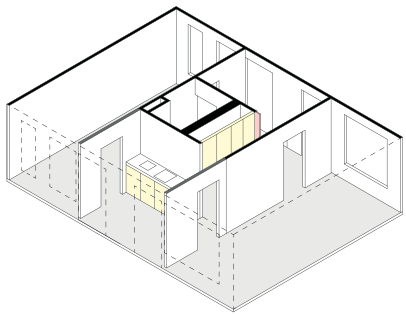
WERKEN



'Gevelbeeld'



Uniform gevelbeeld

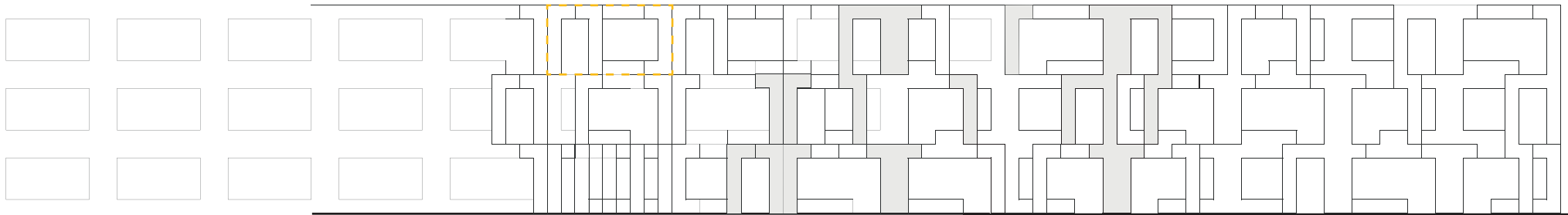
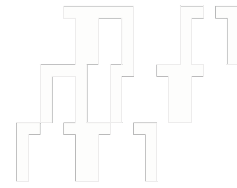
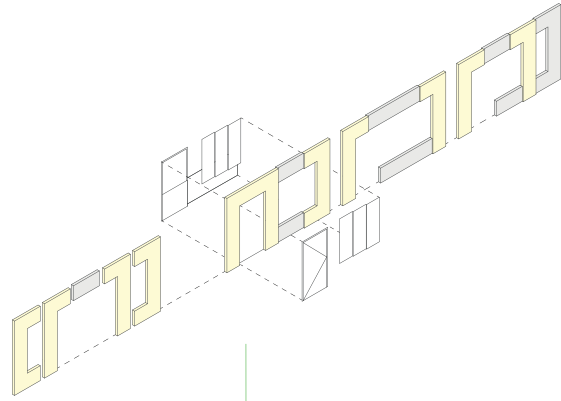
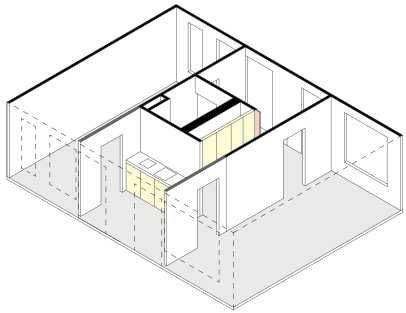


units

raster

'motief' met diepte

Uniform gevelbeeld

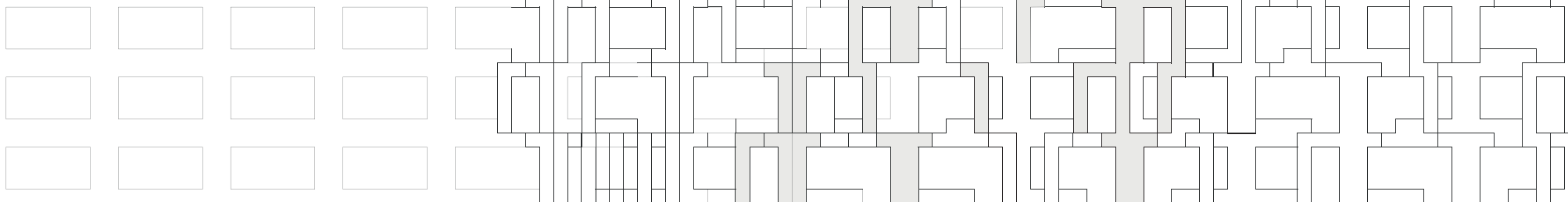
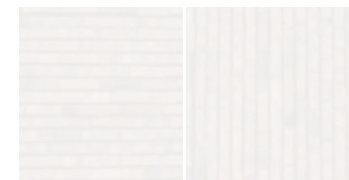
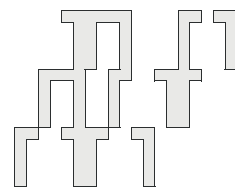
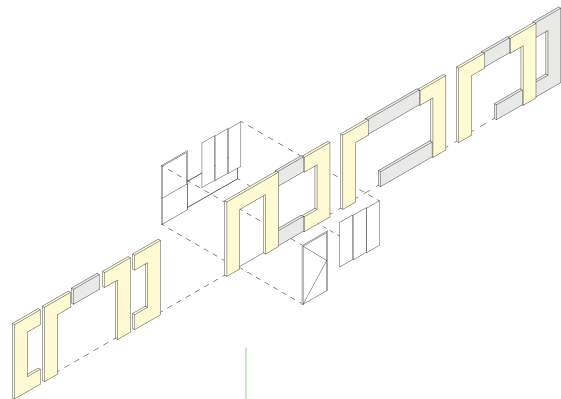
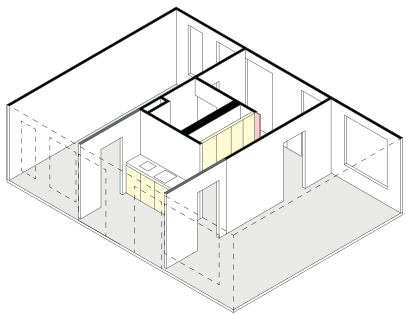


units

raster

'motief' met diepte

Uniform gevelbeeld

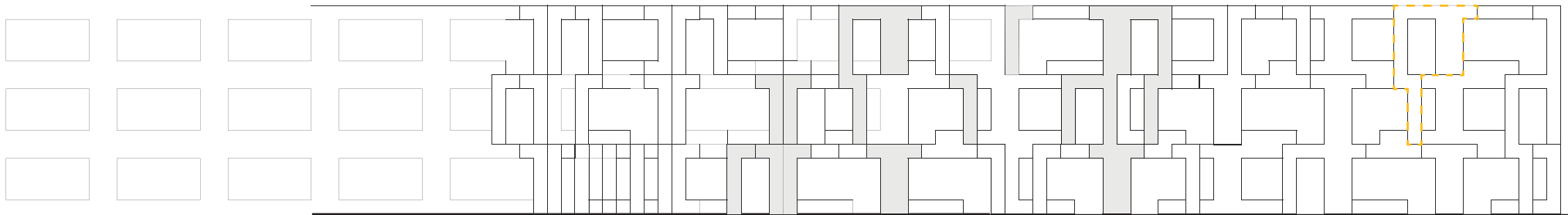
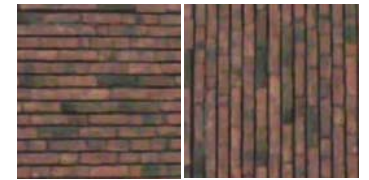
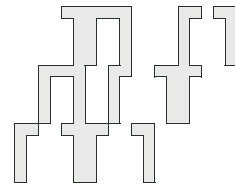
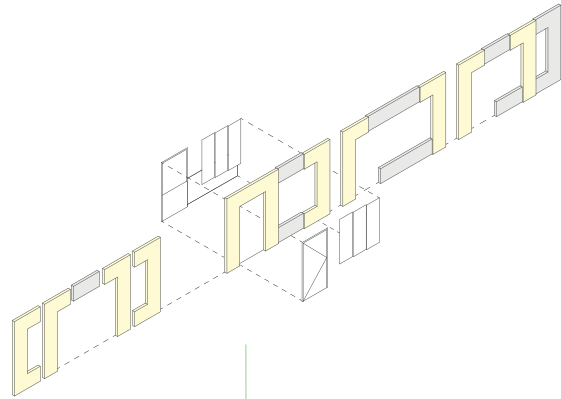
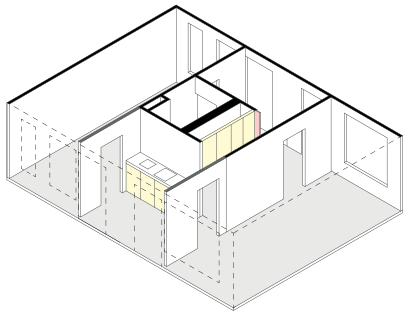


units

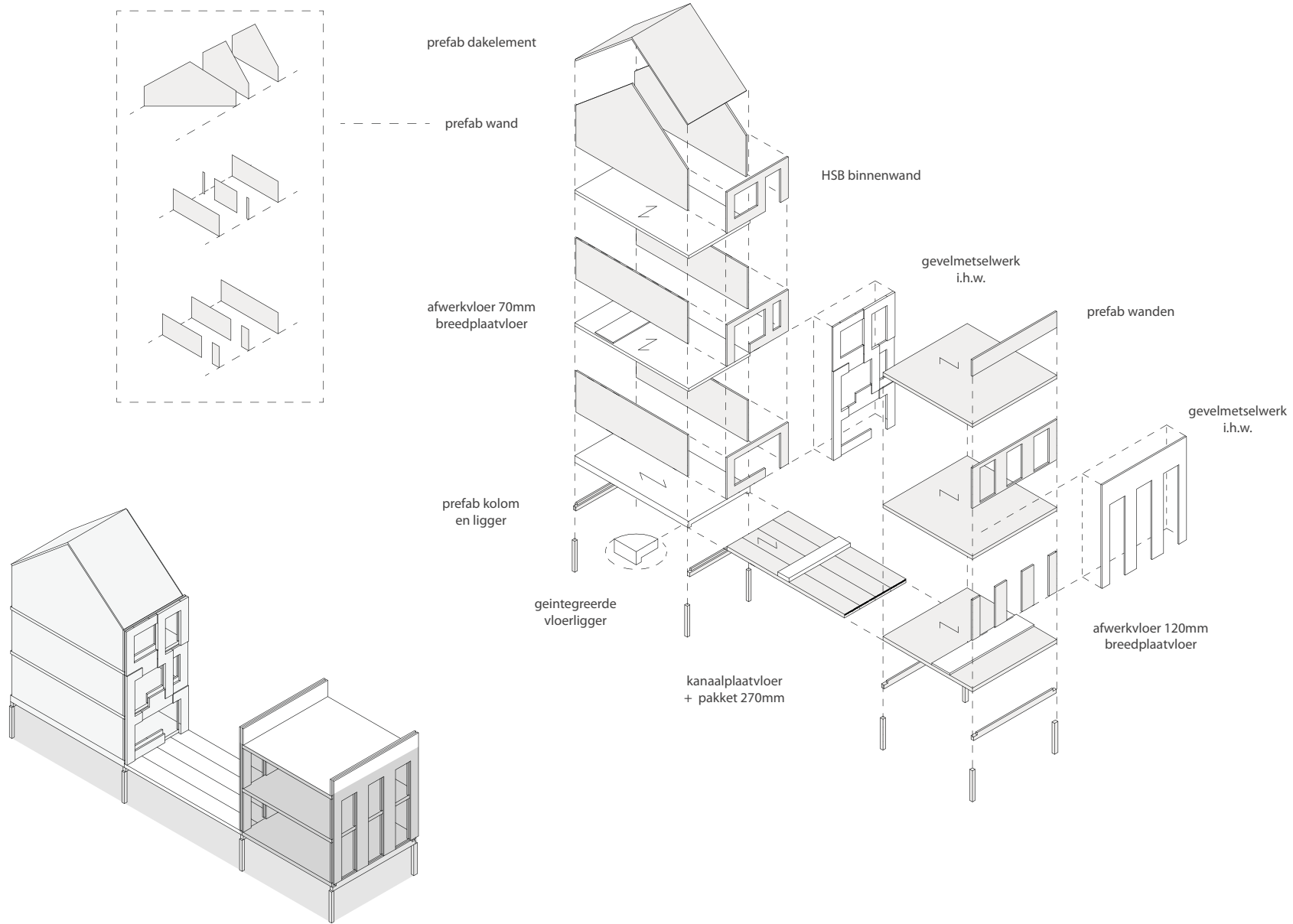
raster

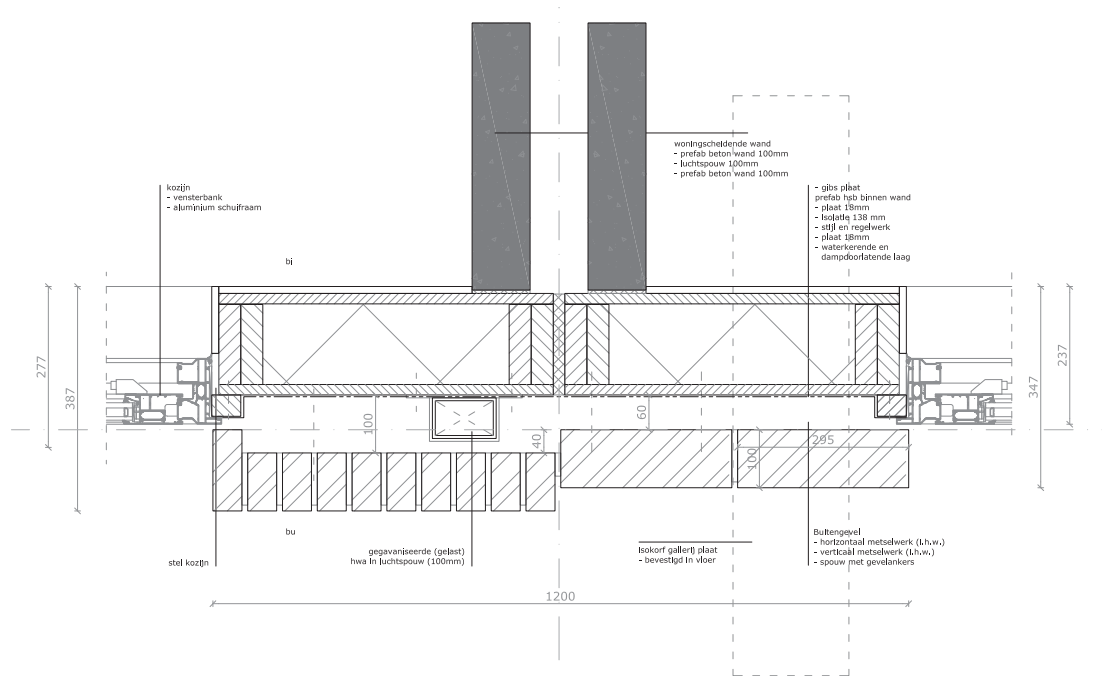
'motief' met diepte

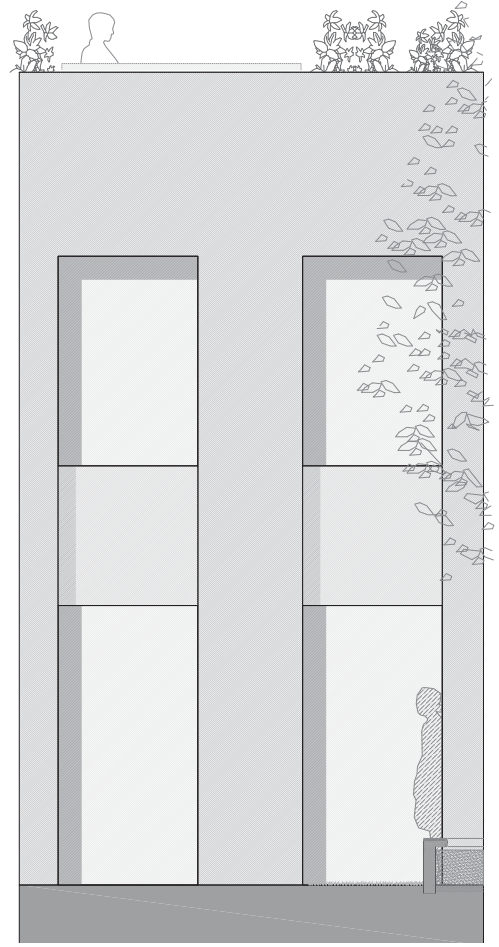
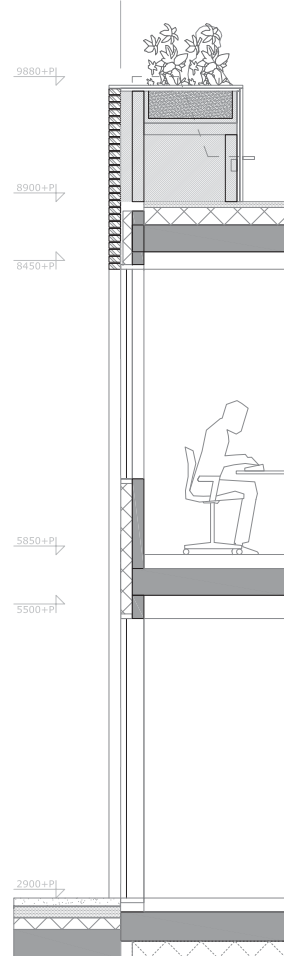
Uniform gevelbeeld

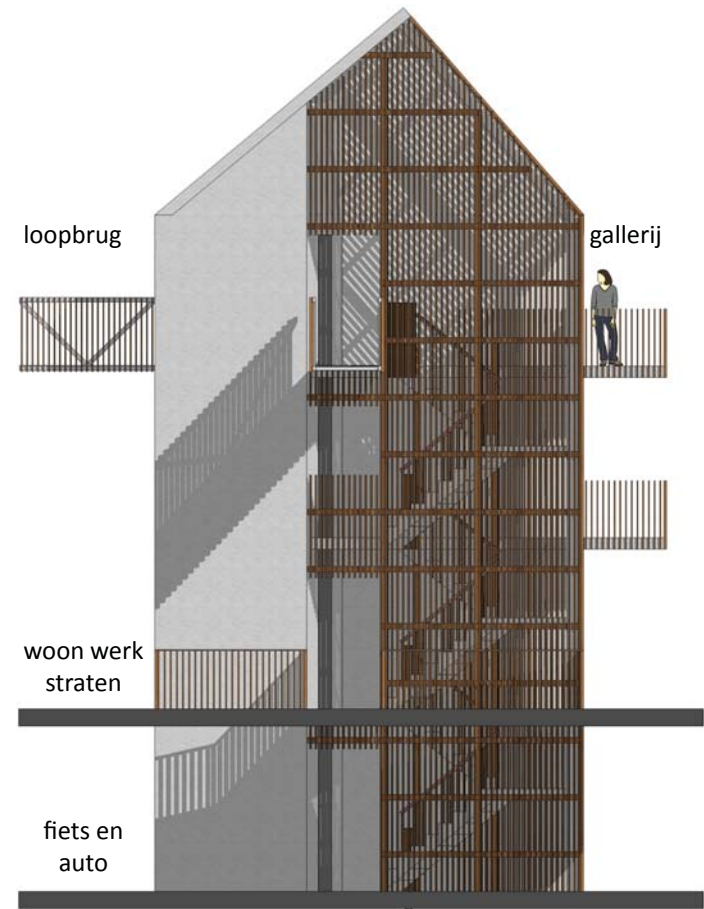


Uniform gevelbeeld



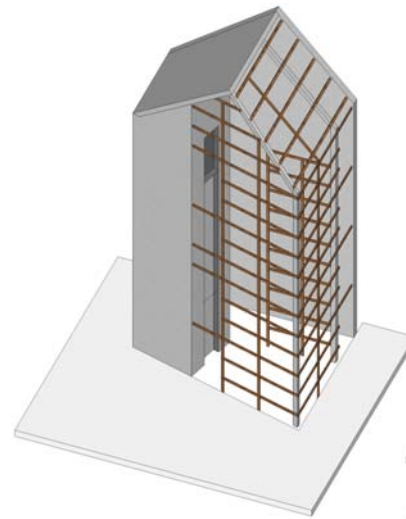




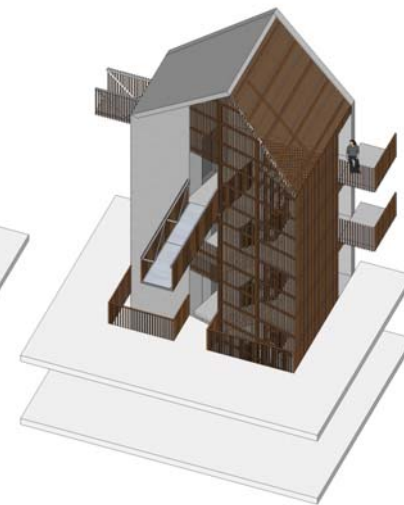




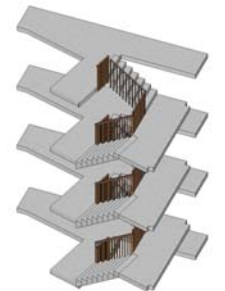
kern en constructie

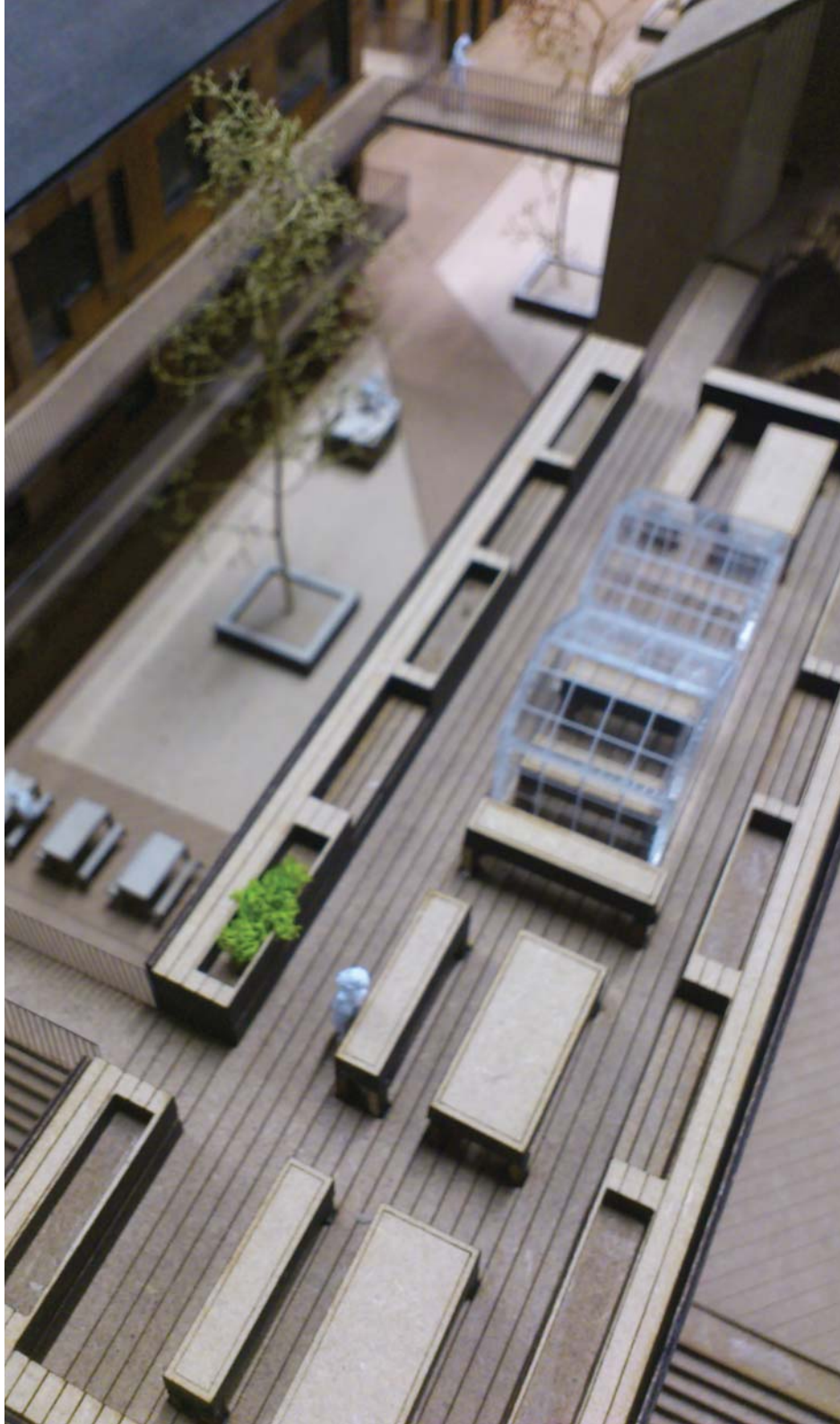


verticale bekleding



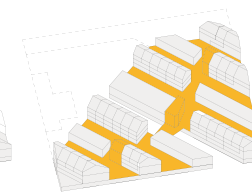
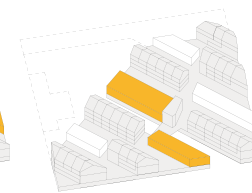
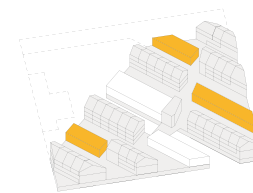
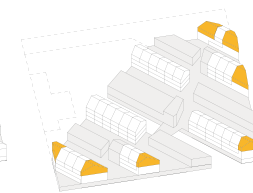
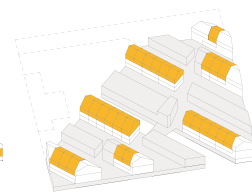
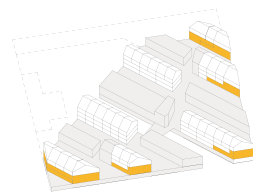
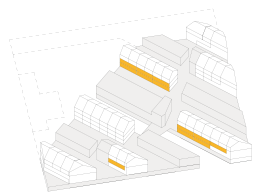
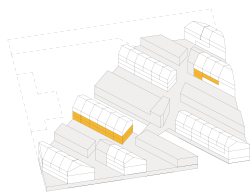
trap en bordes









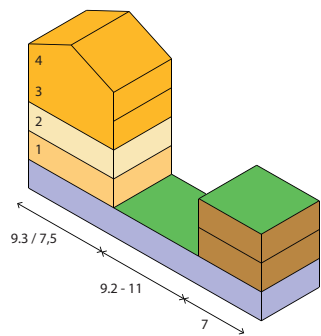
Bedankt



	single	shared	group	couple	bachelor	flex	rental	collectief
	16	12	7	27	7	3	2	
	16	24	24	54	7	125	86	
m ²	39 m ²	62 m ²	102 / 160 m ²	45 / 49 m ²	55 m ²	845 m ²	1180 m ²	2500 m ²

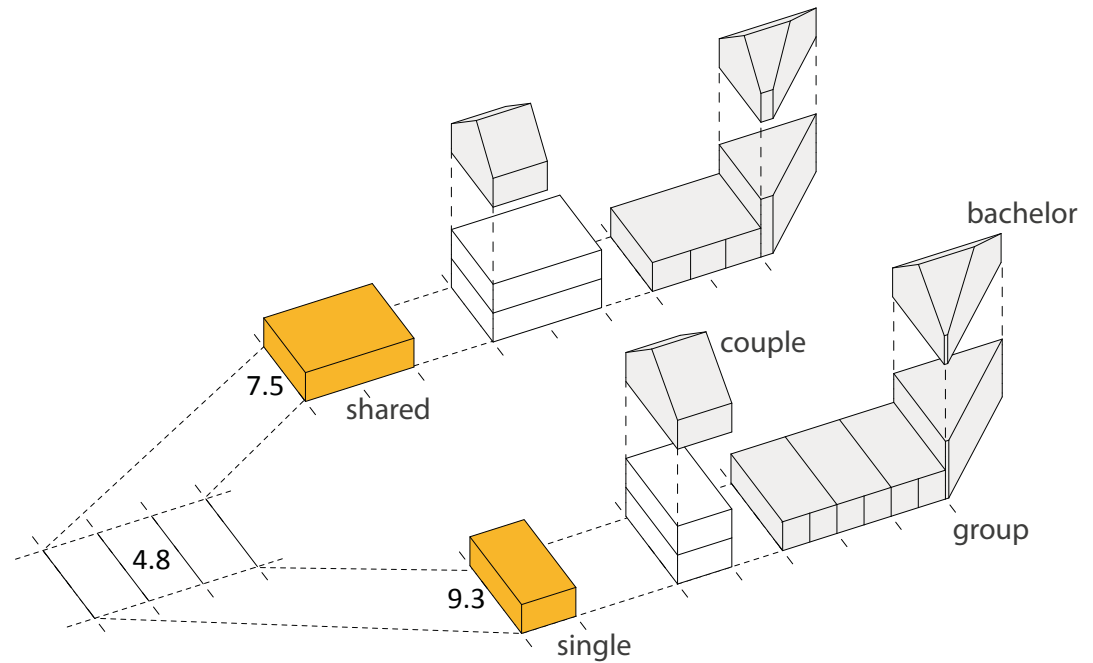
(69)

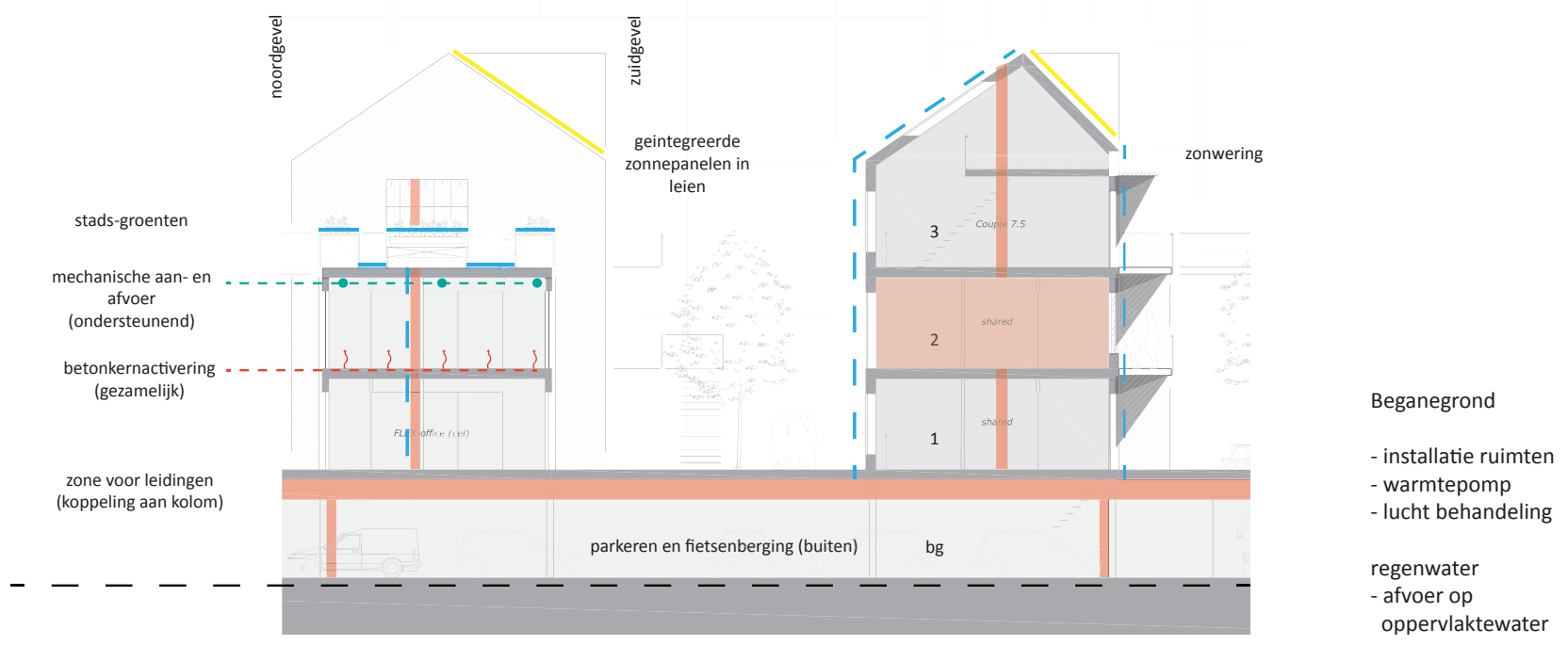
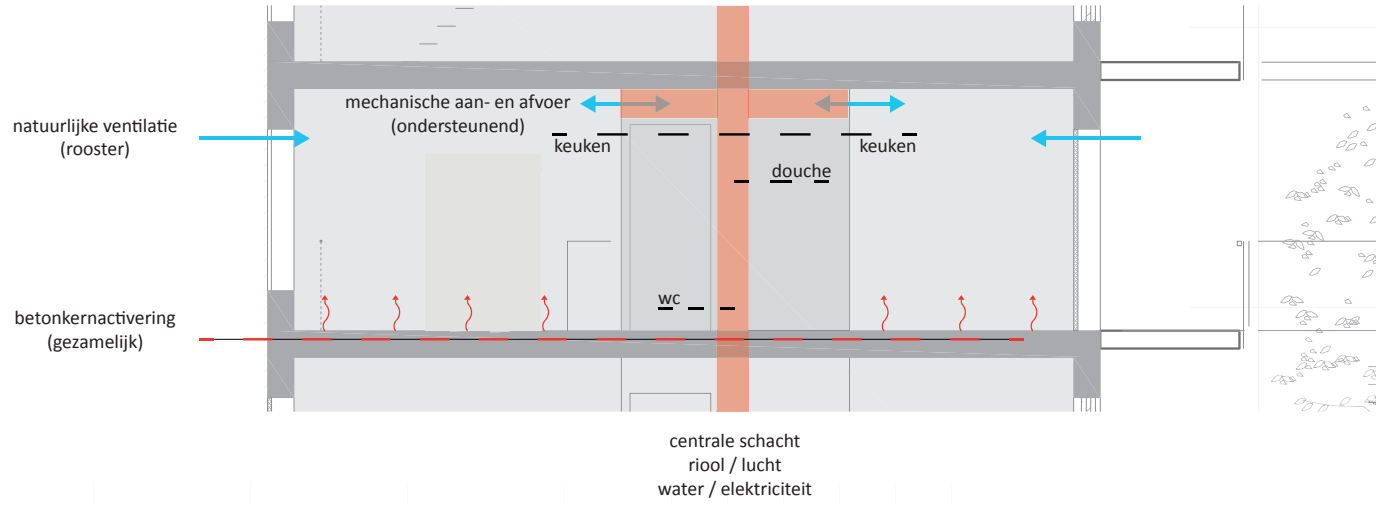
(125)

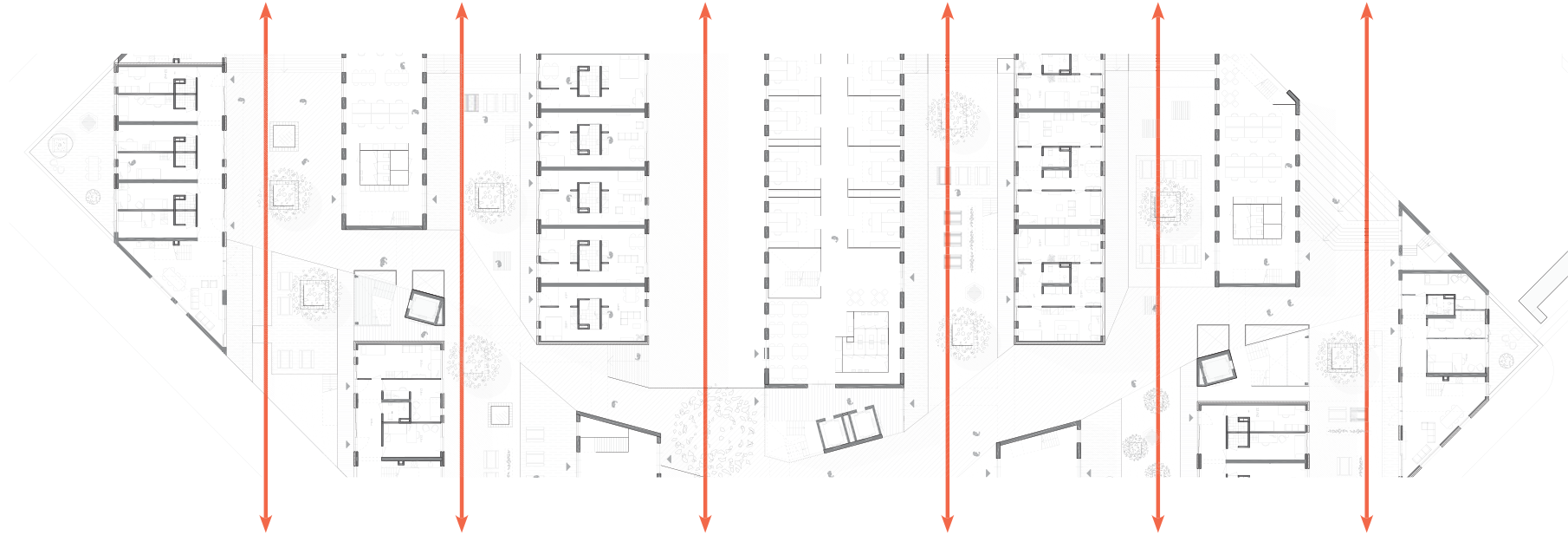


grid en efficiëntie

Breedte en diepte van woon en werk volumes zijn afgestemd op minimale maatvoeringen waarbij een 'open' gebruik mogelijk blijft.







Verbindende straat
verbindende straat
trappenhuizen



overgang

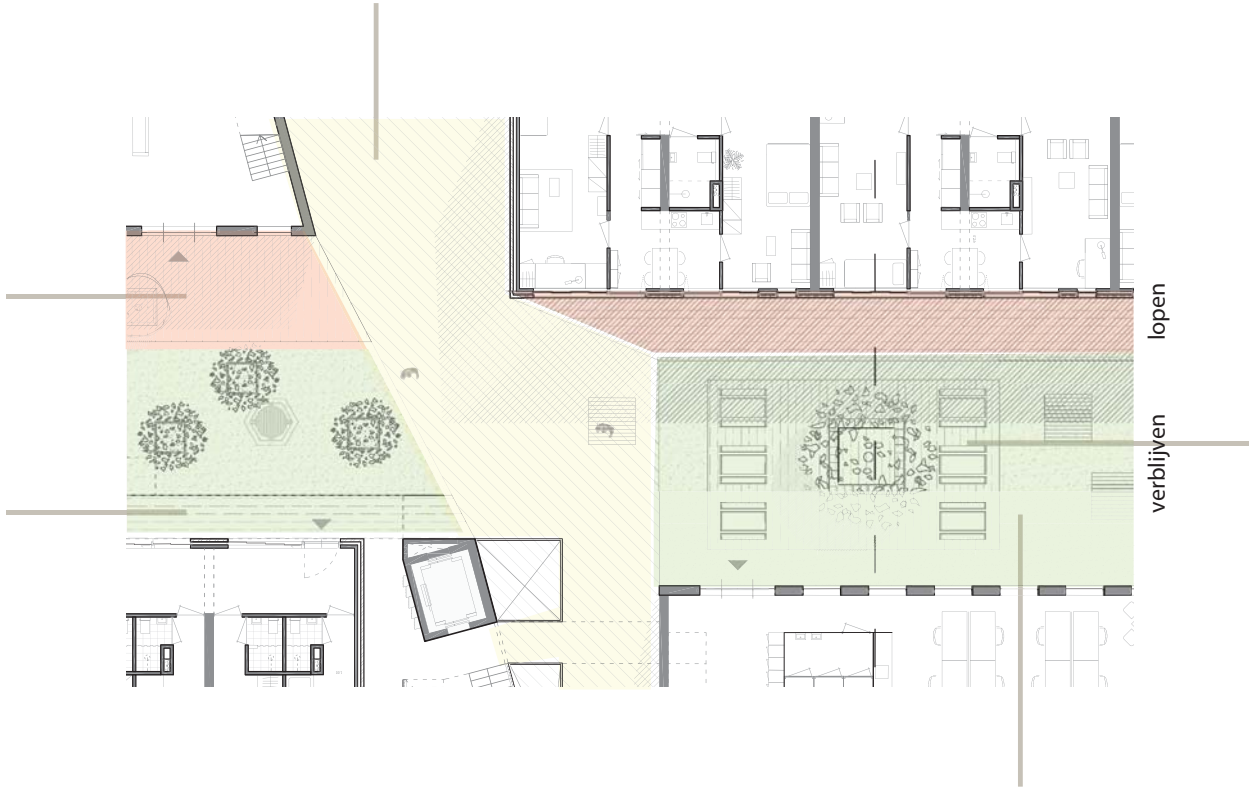


beton platen



publieke ruimte
Roest
middenstraat

bestrating



gras

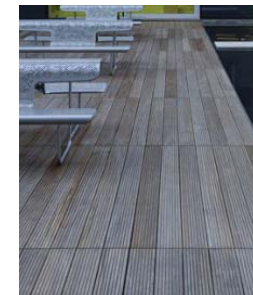


lopen

verblijven



kei-grassteen



floder

functie:
rust
luch
werk
studie
eten