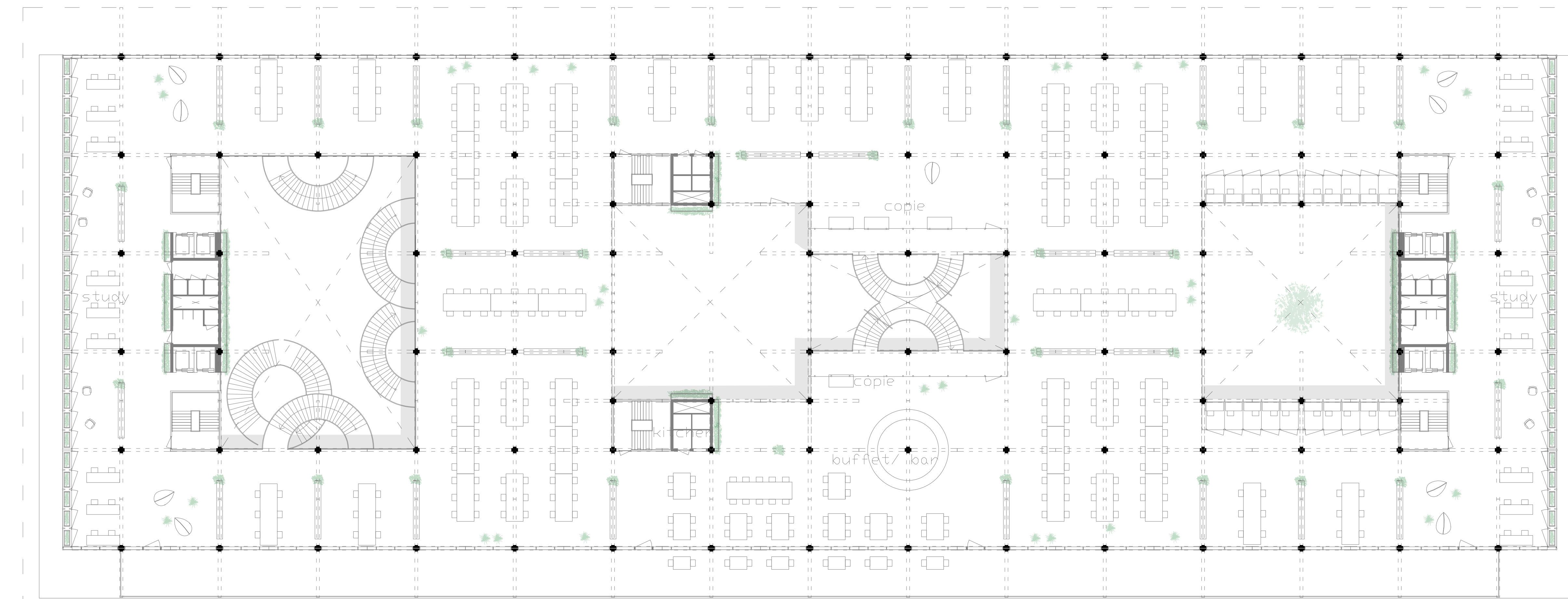
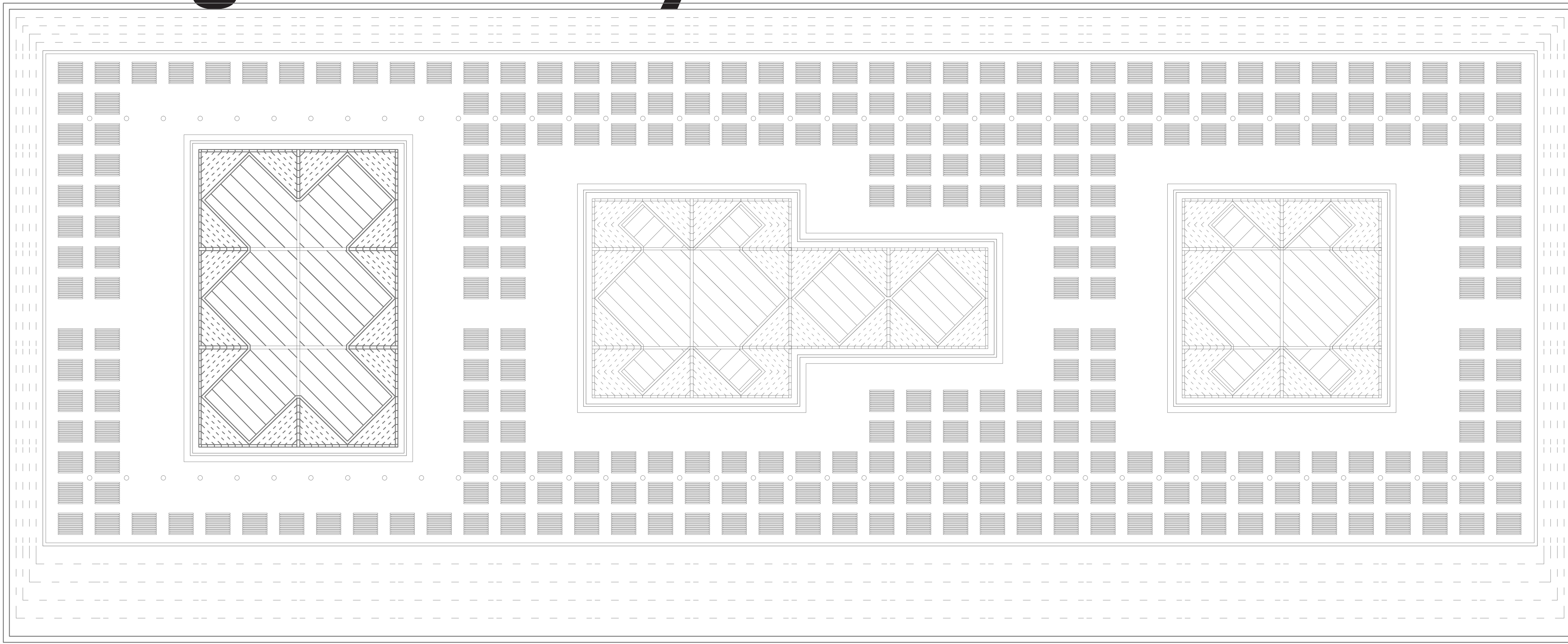


# The green study centre



fifth floor 1:200



clematis (princess kate) - east/ west facade



spathiphyllum (lepelplant), aloe vera, epiremium aurem - on each floor



hedera helix (klimop), lonicera (kamperfoelie) - elevation points



deschampia cespitosa, rozemarijn, hydrangea arborescens (annabel) - atria



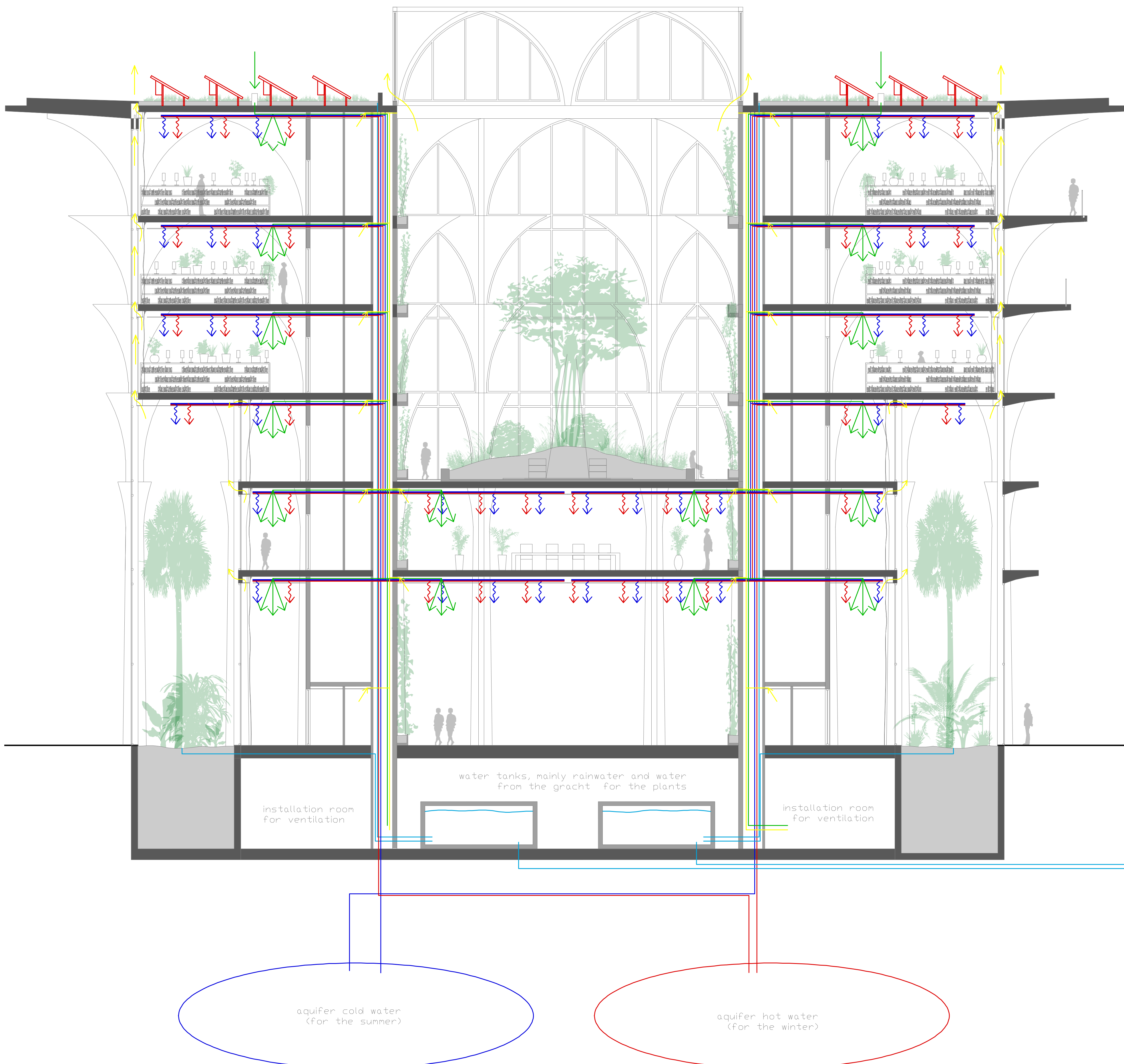
bougainvillea, sabal palmeto - north/ south serre



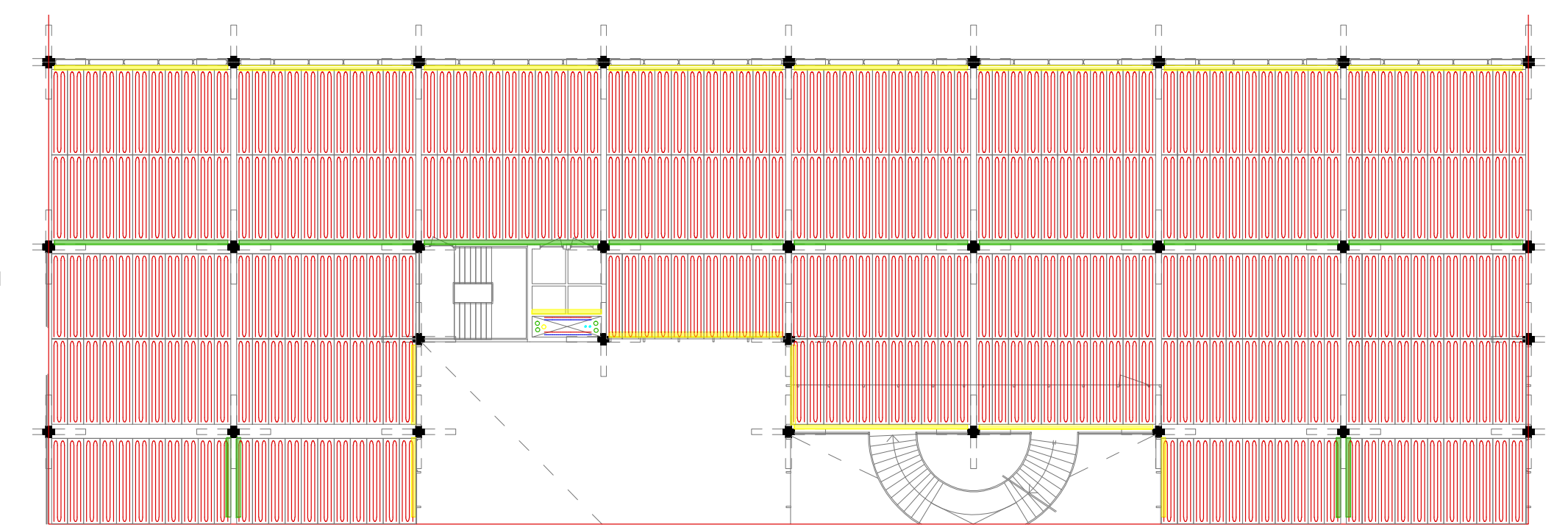
yucca filamentosa, alocaasia calodora, nerium oleander - north serre



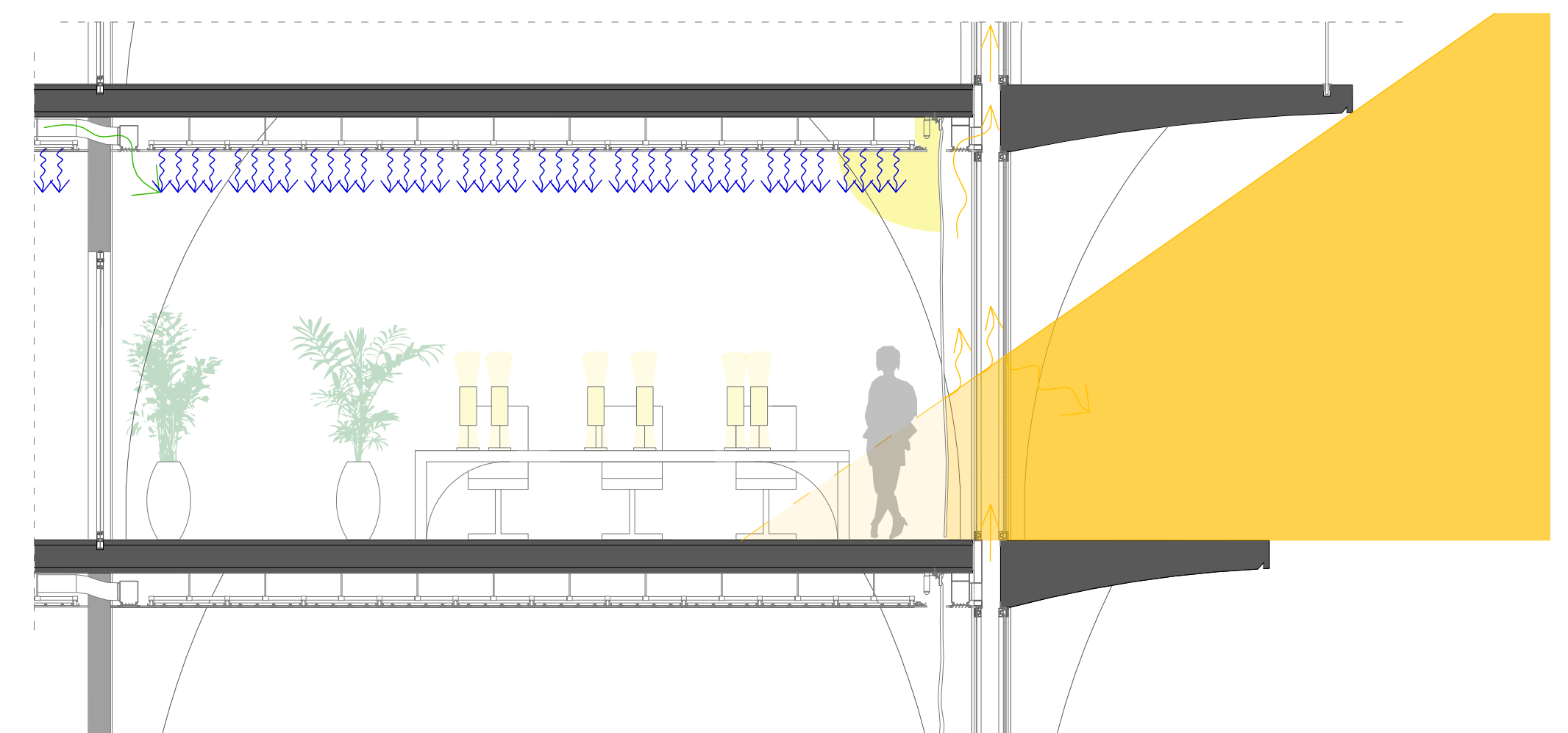
agapanthus (purple cloud), palm phoenix, ceanothus thyrsiflorus - south serre



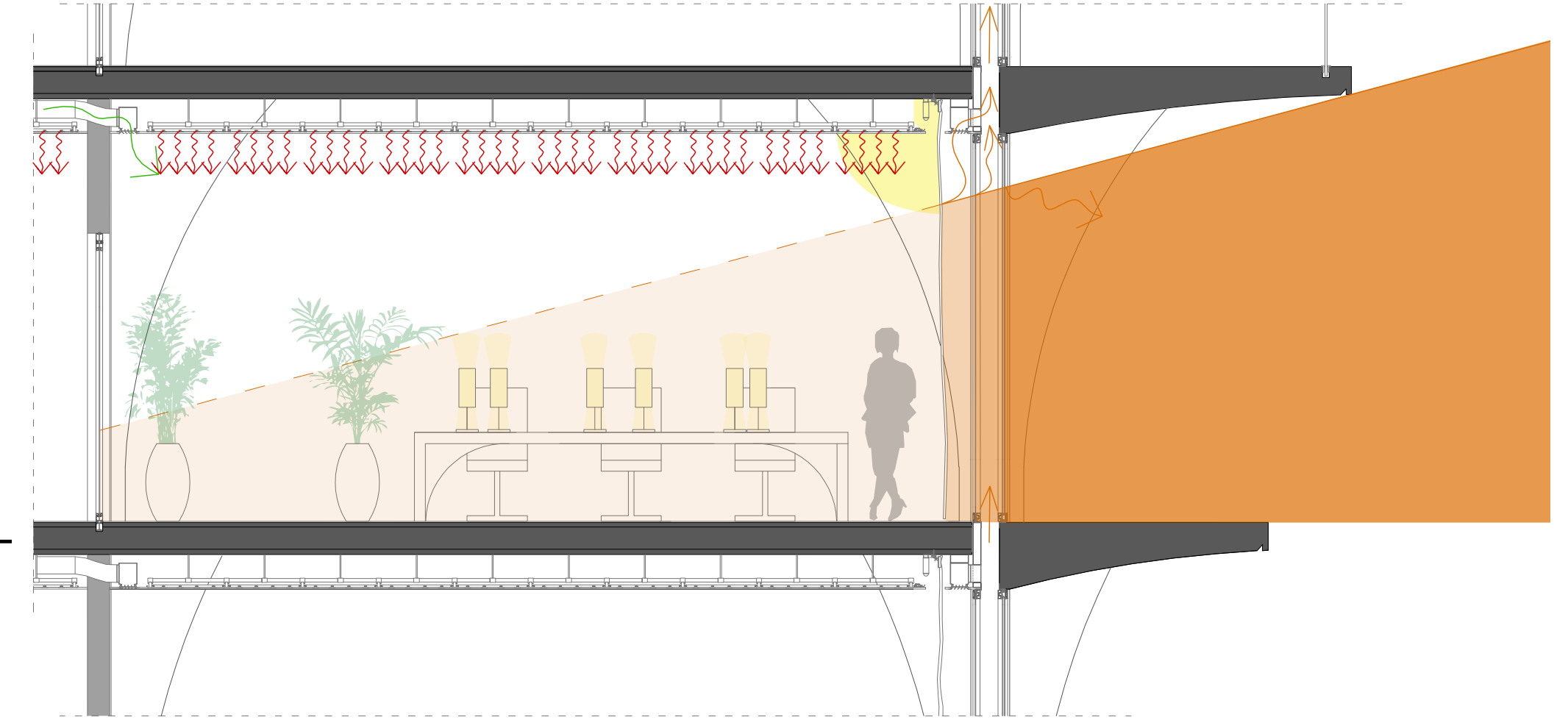
climate schema 1:100



climate schema



summer sun 1:50



winter sun 1:50



summer sun 1:500

winter sun 1:500