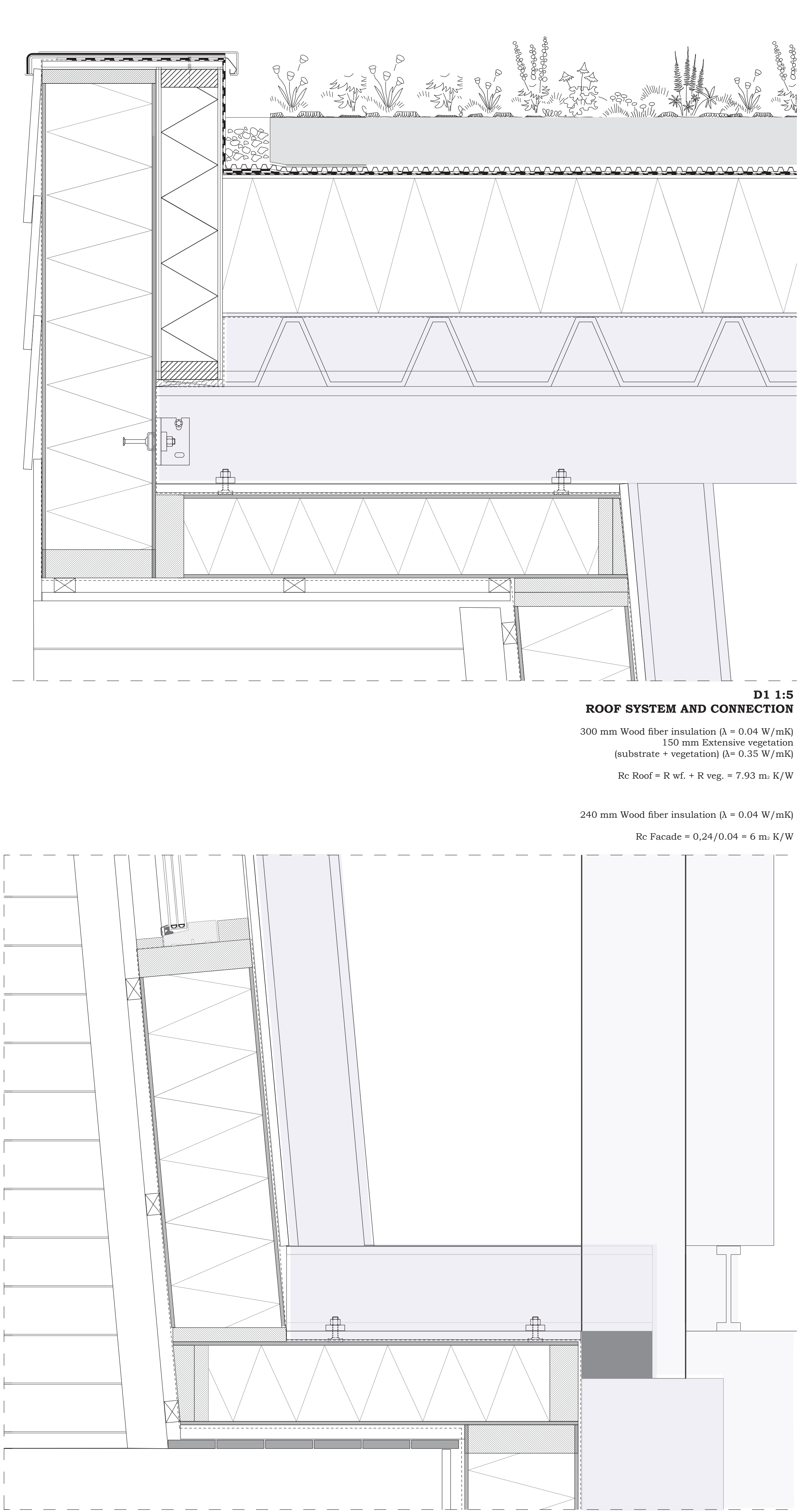


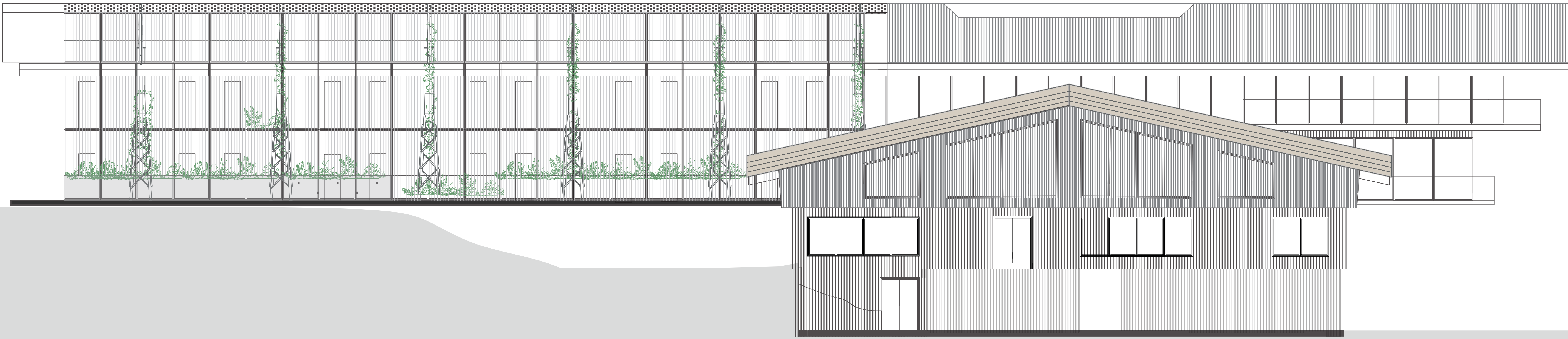
FACADE FRAGMENT
EXISTING - SOUTH 1:20



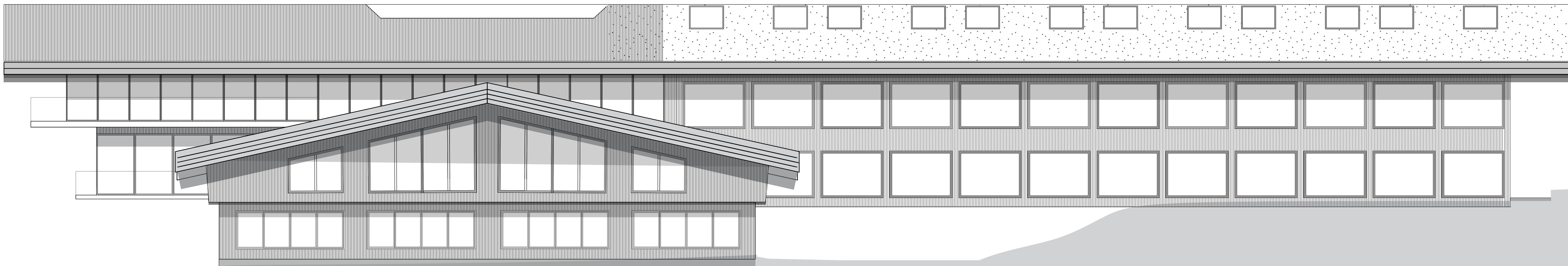
ROOF SYSTEM AND CONNECTION
D1 1:5
300 mm Wood fiber insulation ($\lambda = 0.04$ W/mK)
150 mm Extensive vegetation (substrate + vegetation) ($\lambda = 0.35$ W/mK)
 $R_{\text{c Roof}} = R_{\text{wf}} + R_{\text{veg}} = 7.93$ m² K/W

240 mm Wood fiber insulation ($\lambda = 0.04$ W/mK)
 $R_{\text{c Facade}} = 0.24/0.04 = 6$ m² K/W

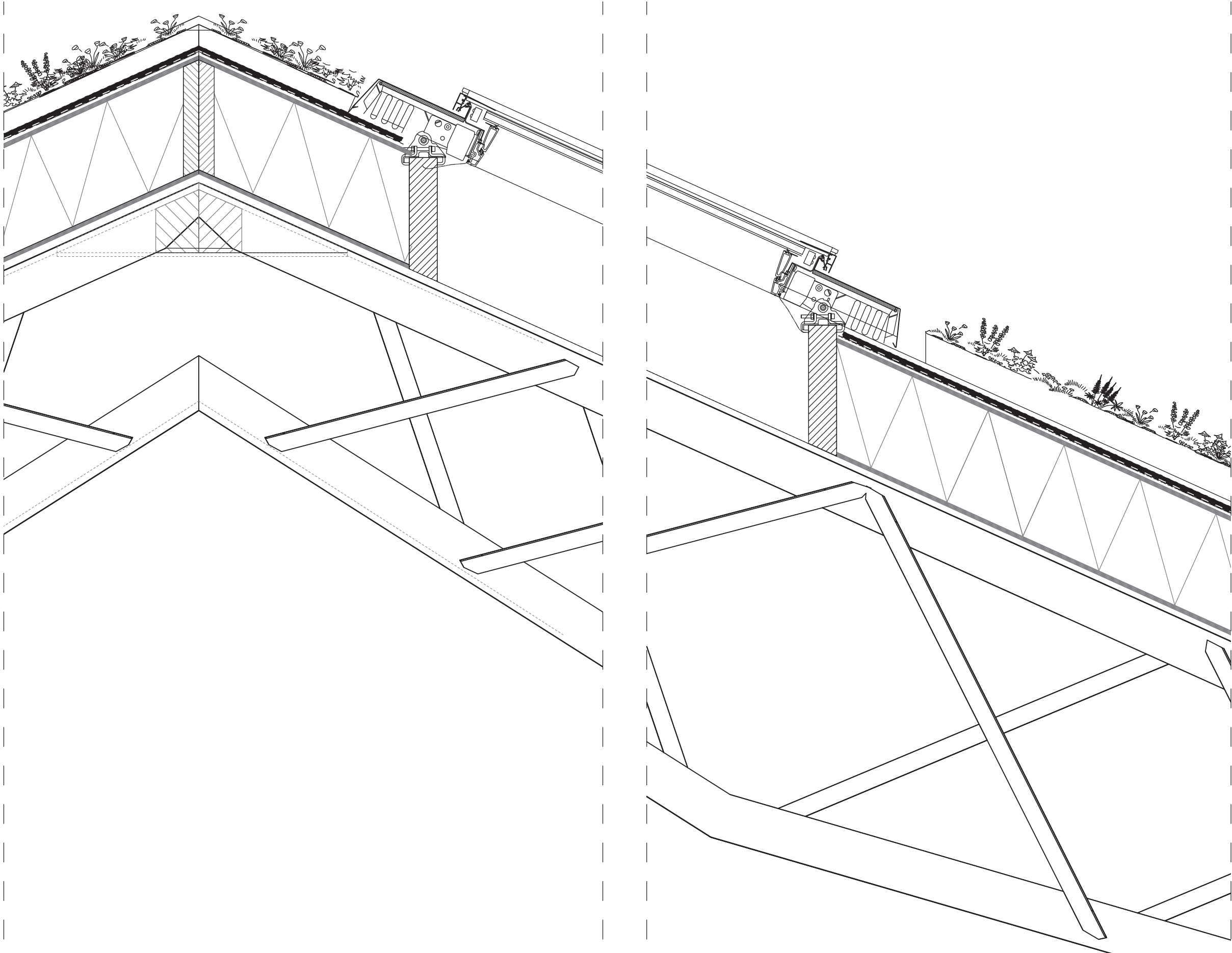
NEW FACADE CONNECTIONS
D2 1:5
DETAILS
EXISTING - SOUTH 1:5



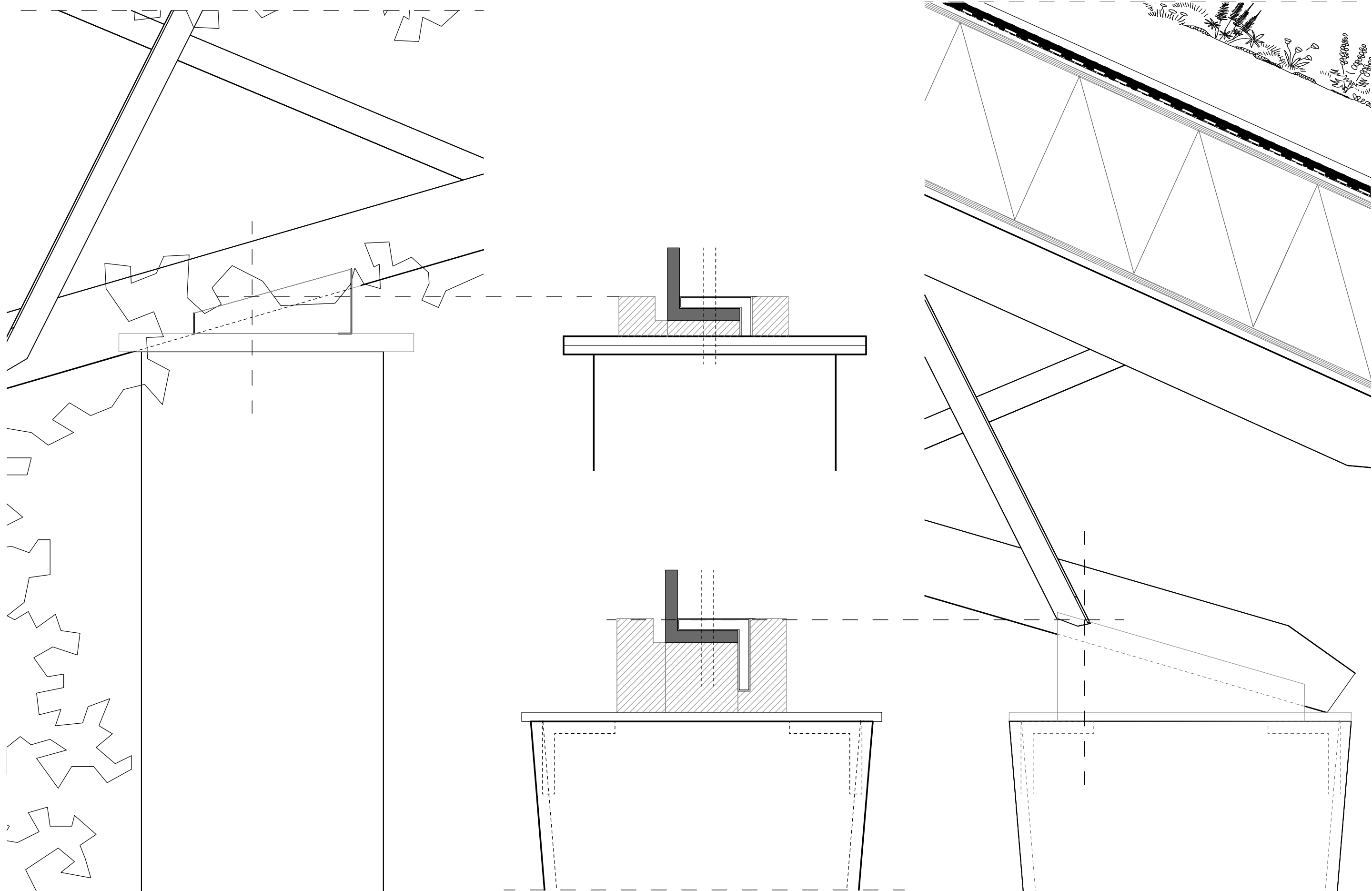
SOUTH ELEVATION
1:100



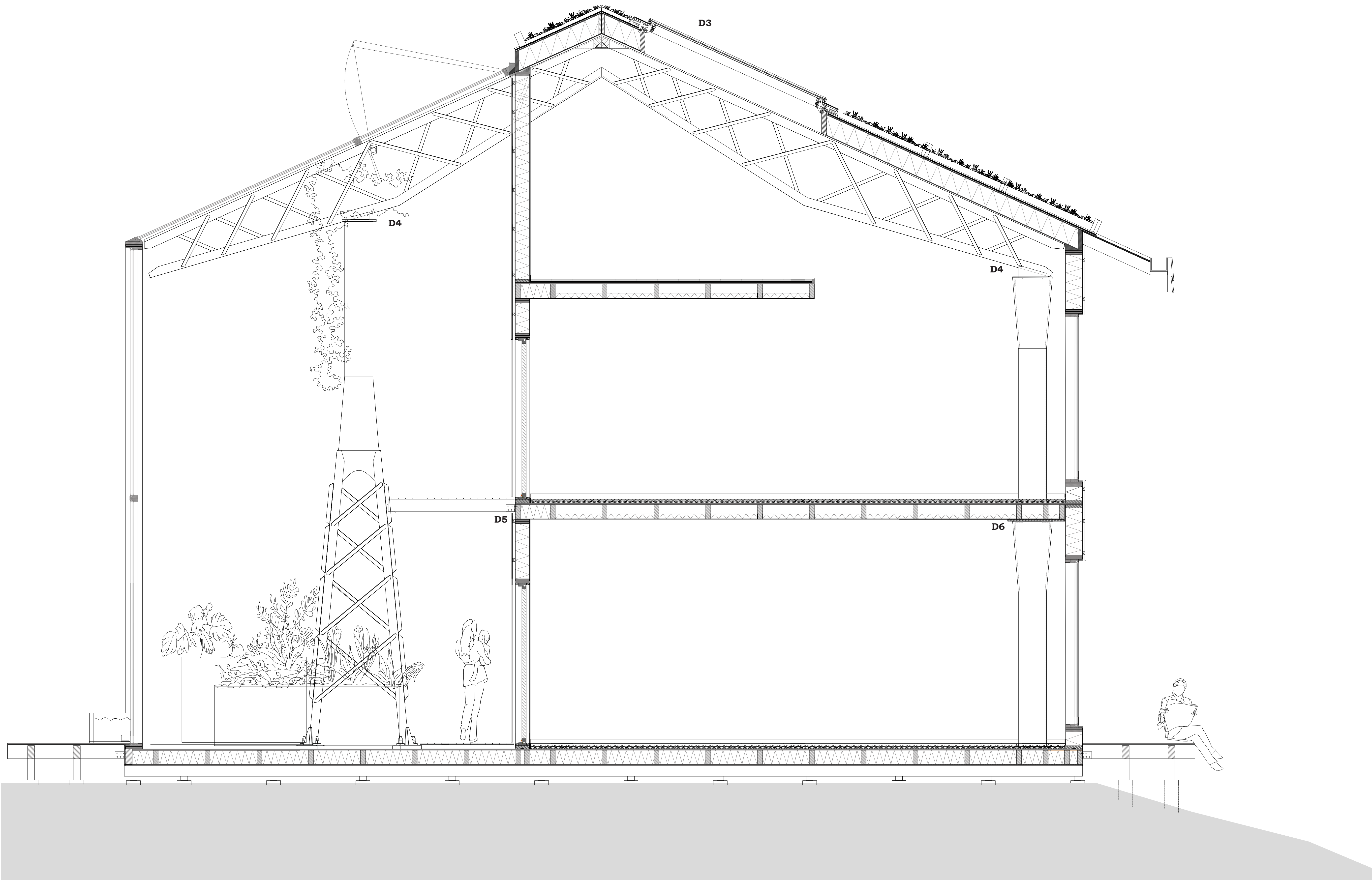
NORTH ELEVATION
1:100



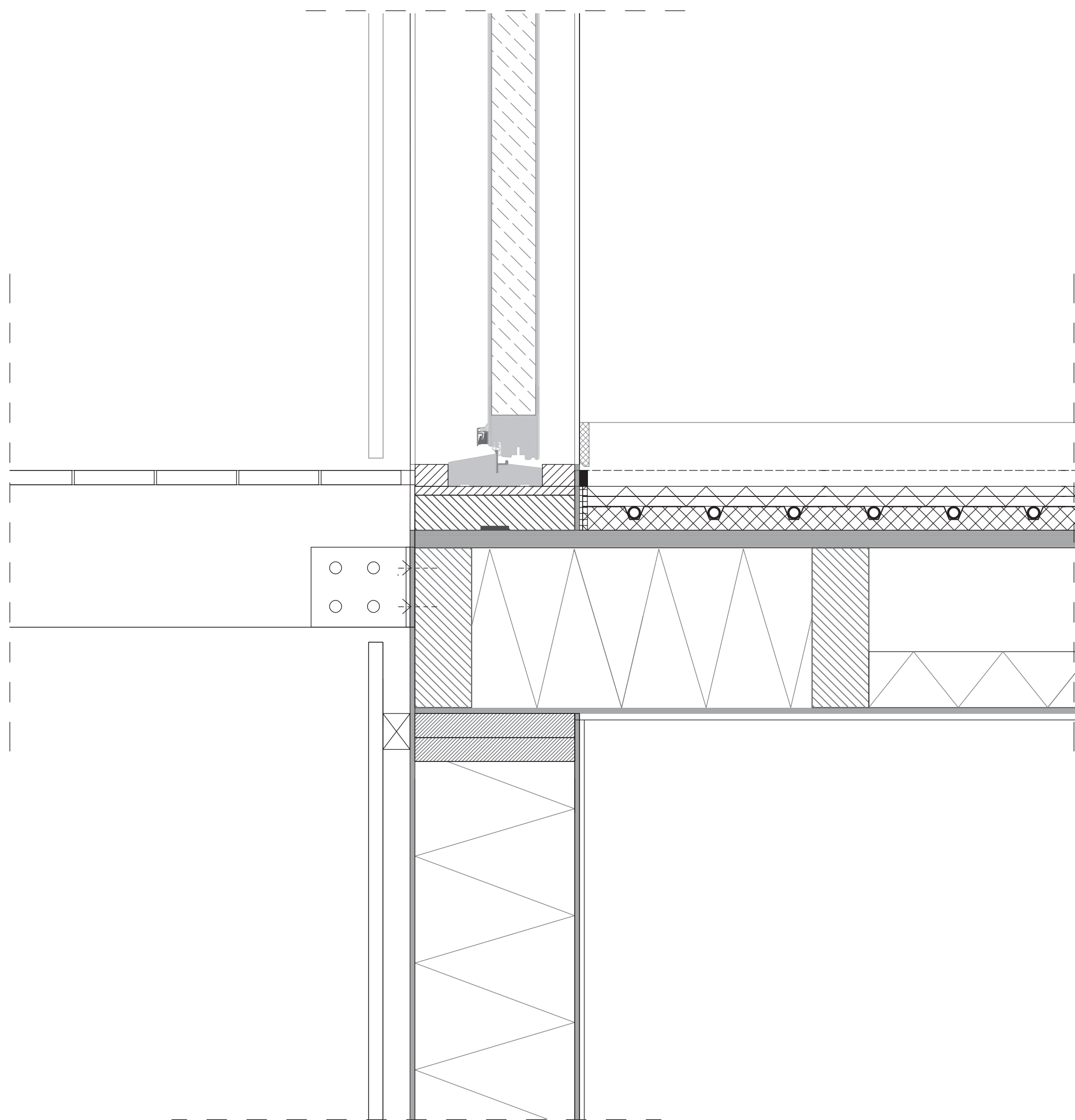
D3 1:10
ROOF SYSTEM, WINDOW, STEEL TRUSS



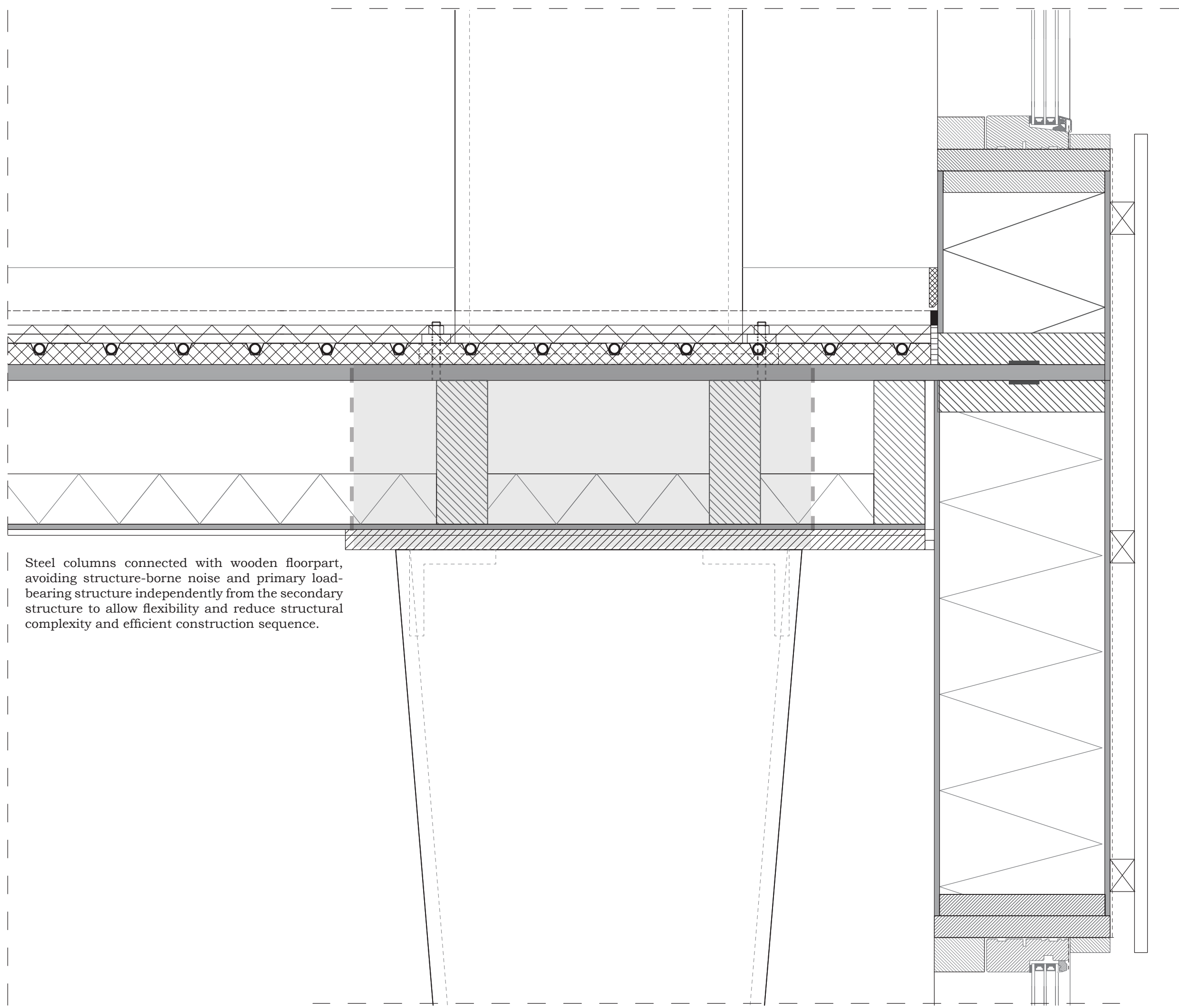
D4 1:5
CONNECTION COLUMNS, TRUSS
WOOD, ANGLE PROFILE



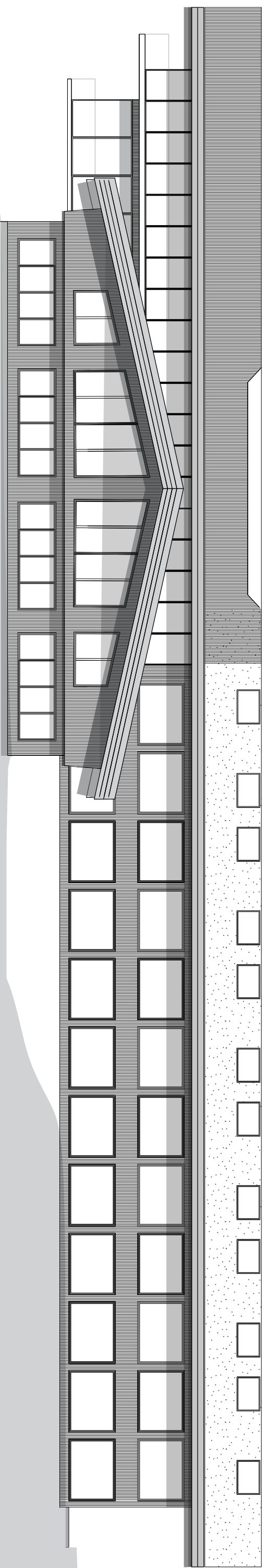
TECHNICAL SECTION
GREENHOUSE - ROOMS 1:20 (75%)



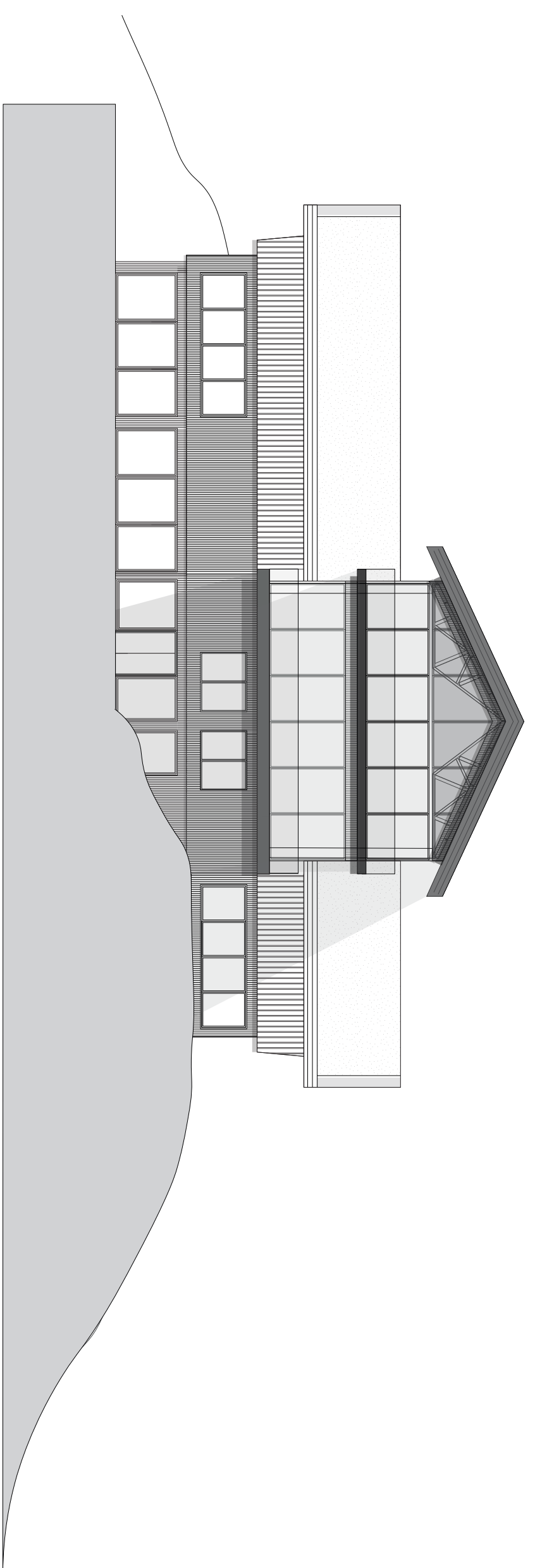
D5 1:5
CONNECTION LIGHT
TIMBER FRAME WALLS, FLOORING



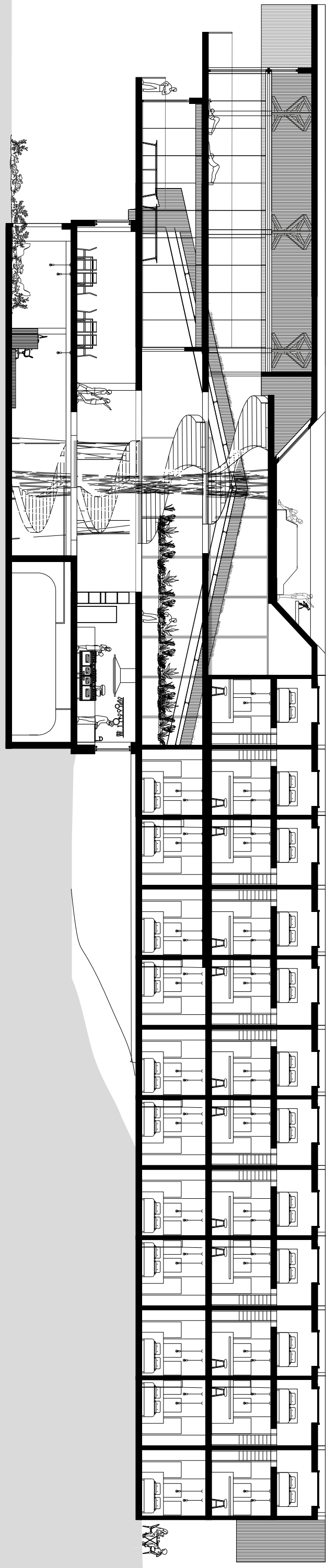
D6 1:5
CONNECTION CONSTRUCTION,
FLOOR, FACADE



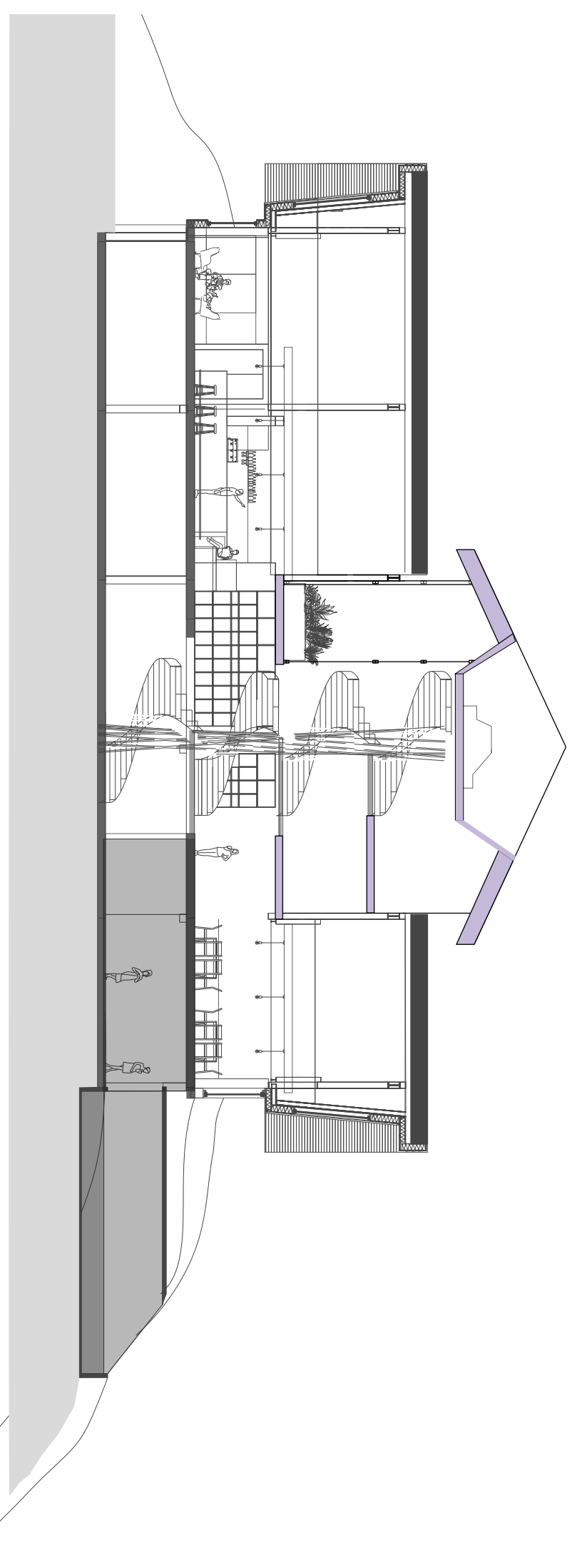
NORTH FACADE
1:200



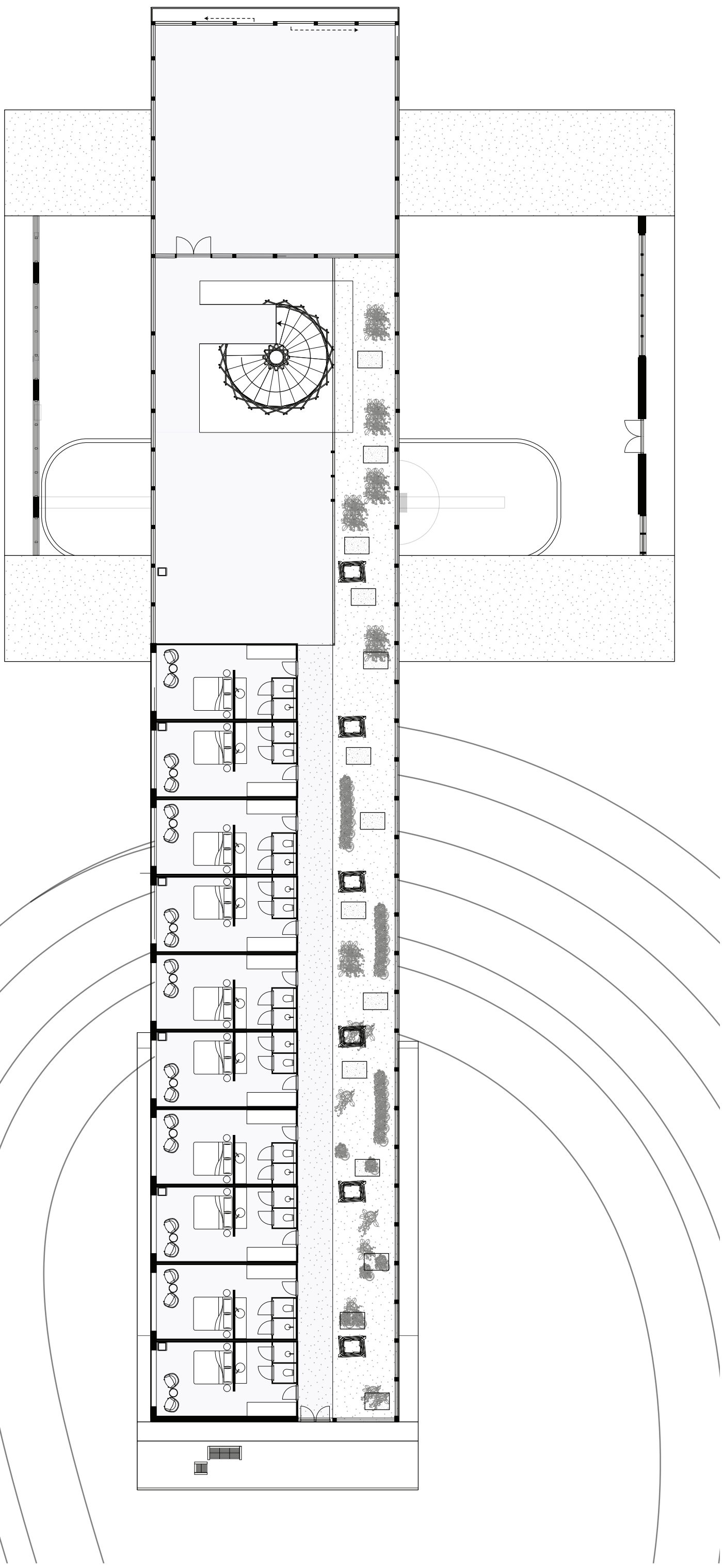
EAST FACADE
1:200



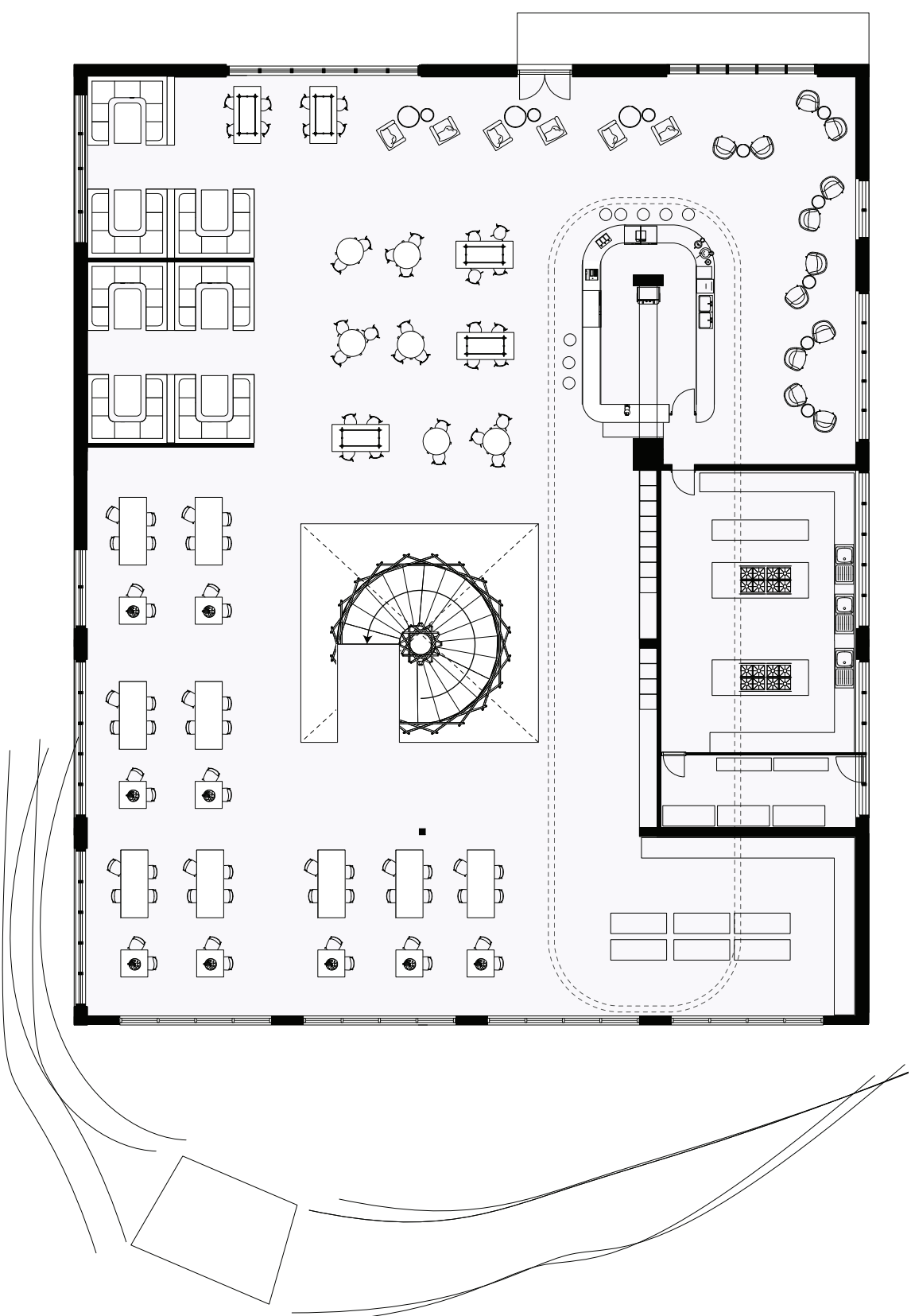
LONG. SECTION
1:200



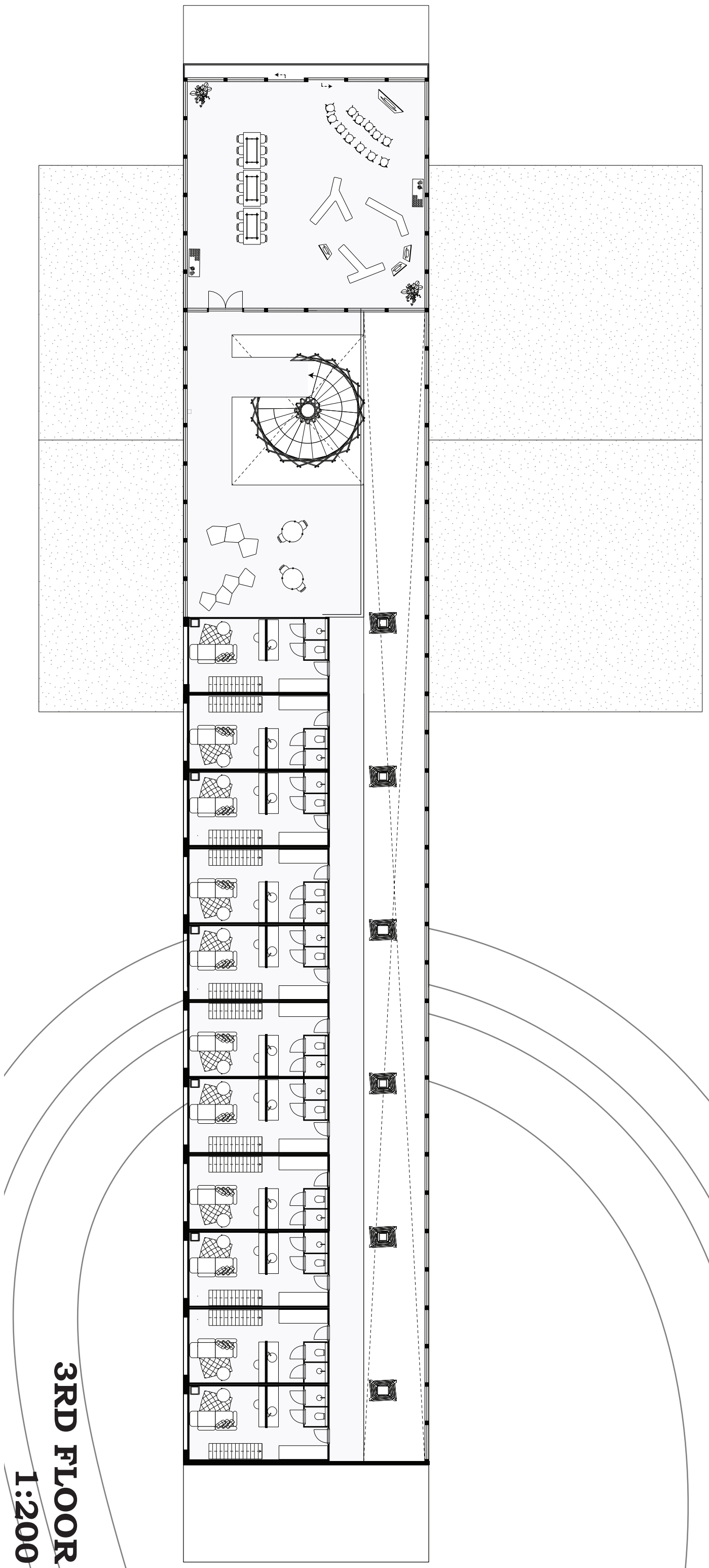
SECTION
1:200



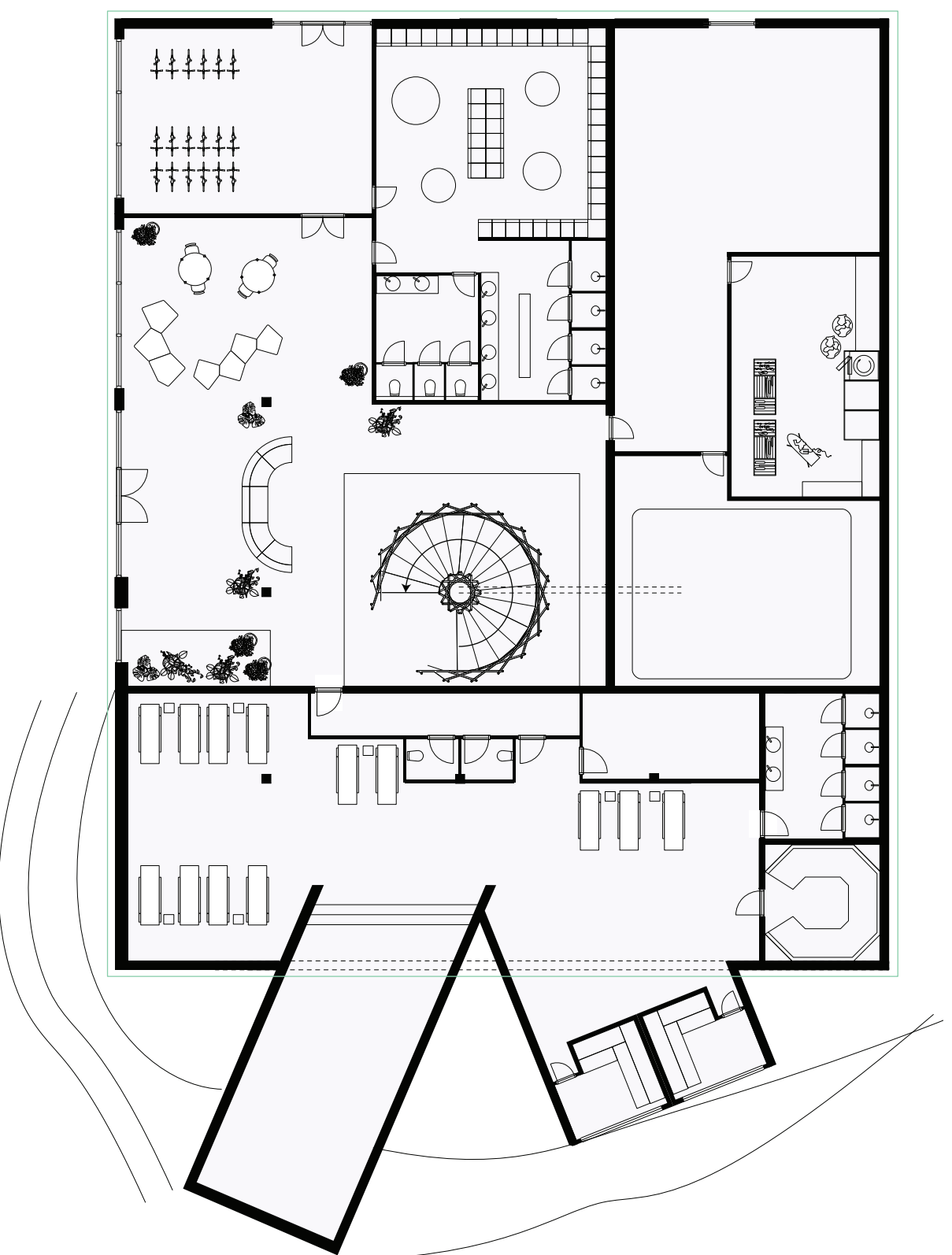
2ND FLOOR
1:200



1ST FLOOR
1:200



3RD FLOOR
1:200



GROUND FLOOR
1:200