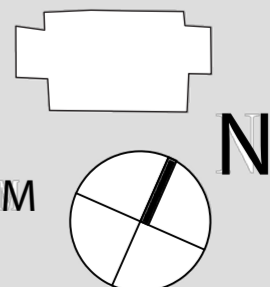
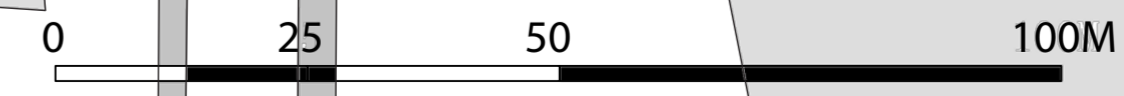
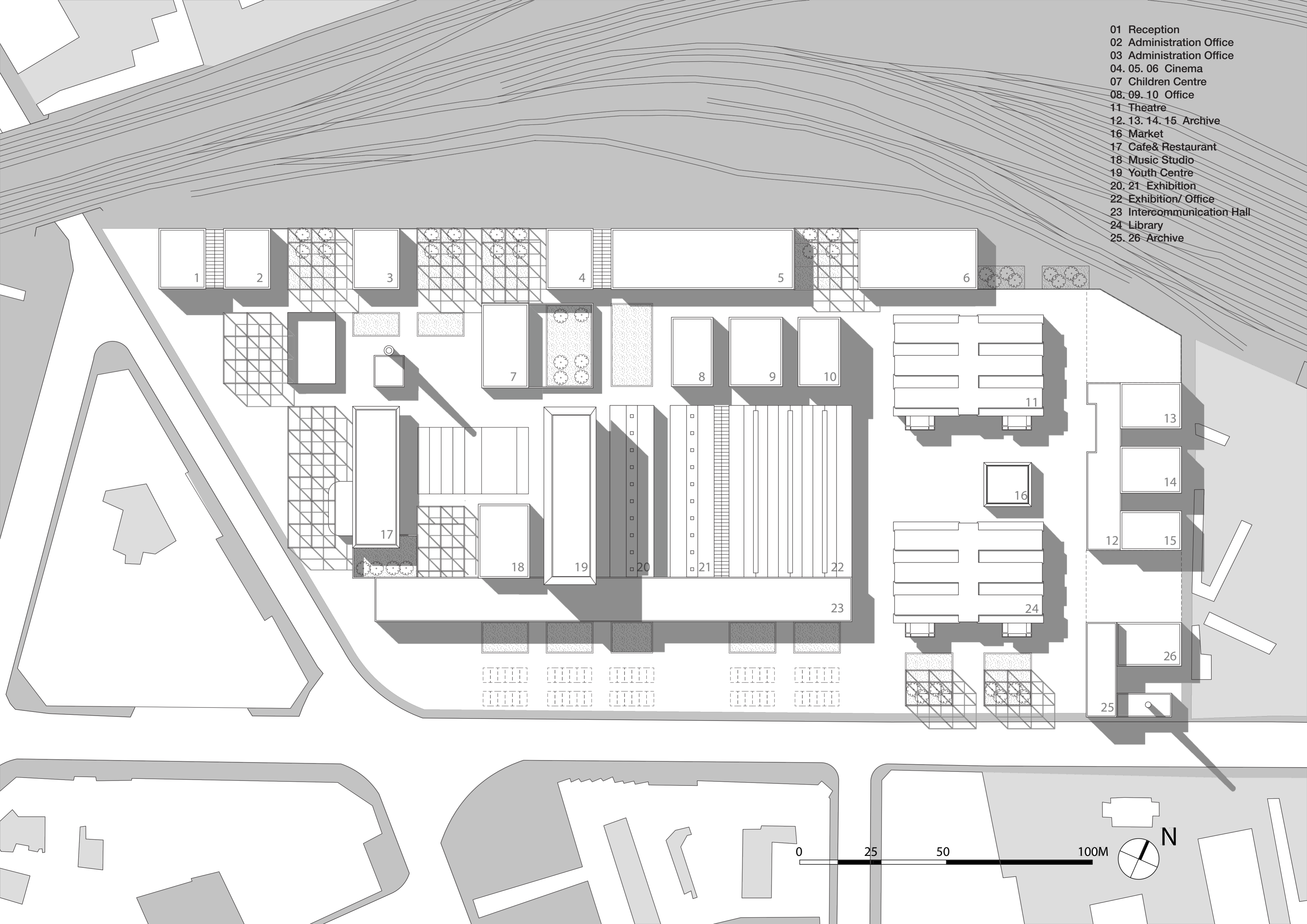


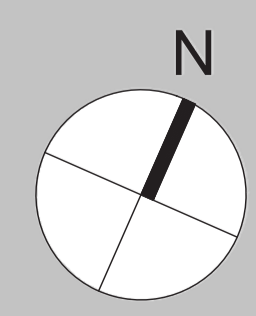
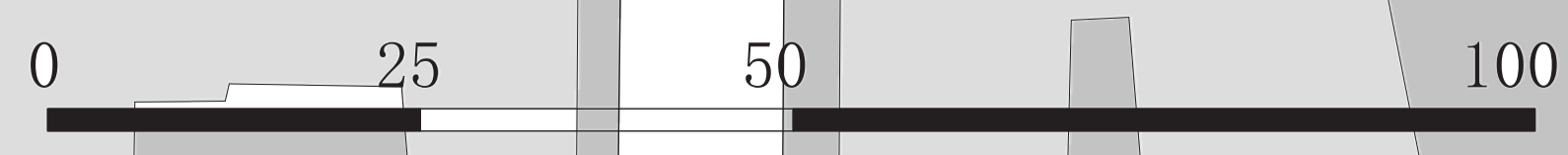
- 01 Reception
- 02 Administration Office
- 03 Administration Office
- 04. 05. 06 Cinema
- 07 Children Centre
- 08. 09. 10 Office
- 11 Theatre
- 12. 13. 14. 15 Archive
- 16 Market
- 17 Cafe & Restaurant
- 18 Music Studio
- 19 Youth Centre
- 20. 21 Exhibition
- 22 Exhibition/ Office
- 23 Intersommunication Hall
- 24 Library
- 25. 26 Archive

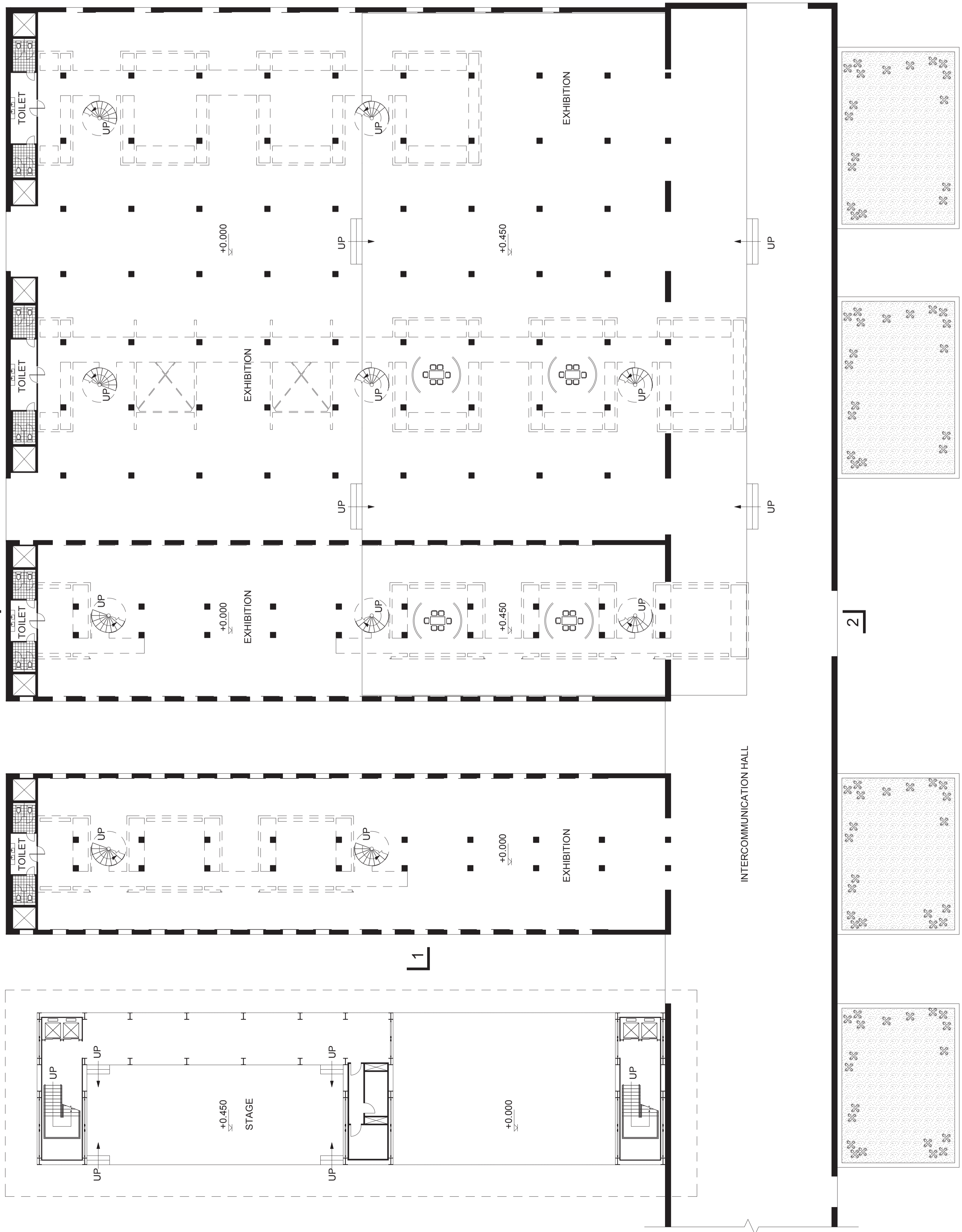


- 01 Reception
- 02 Administration Office
- 03 Administration Office
- 04. 05. 06 Cinema
- 07 Children Centre
- 08. 09. 10 Office
- 11 Theatre
- 12. 13. 14. 15 Archive
- 16 Market
- 17 Cafe & Restaurant
- 18 Music Studio
- 19 Youth Centre
- 20. 21 Exhibition
- 22 Exhibition/ Office
- 23 Intercommunication Hall
- 24 Library
- 25. 26 Archive

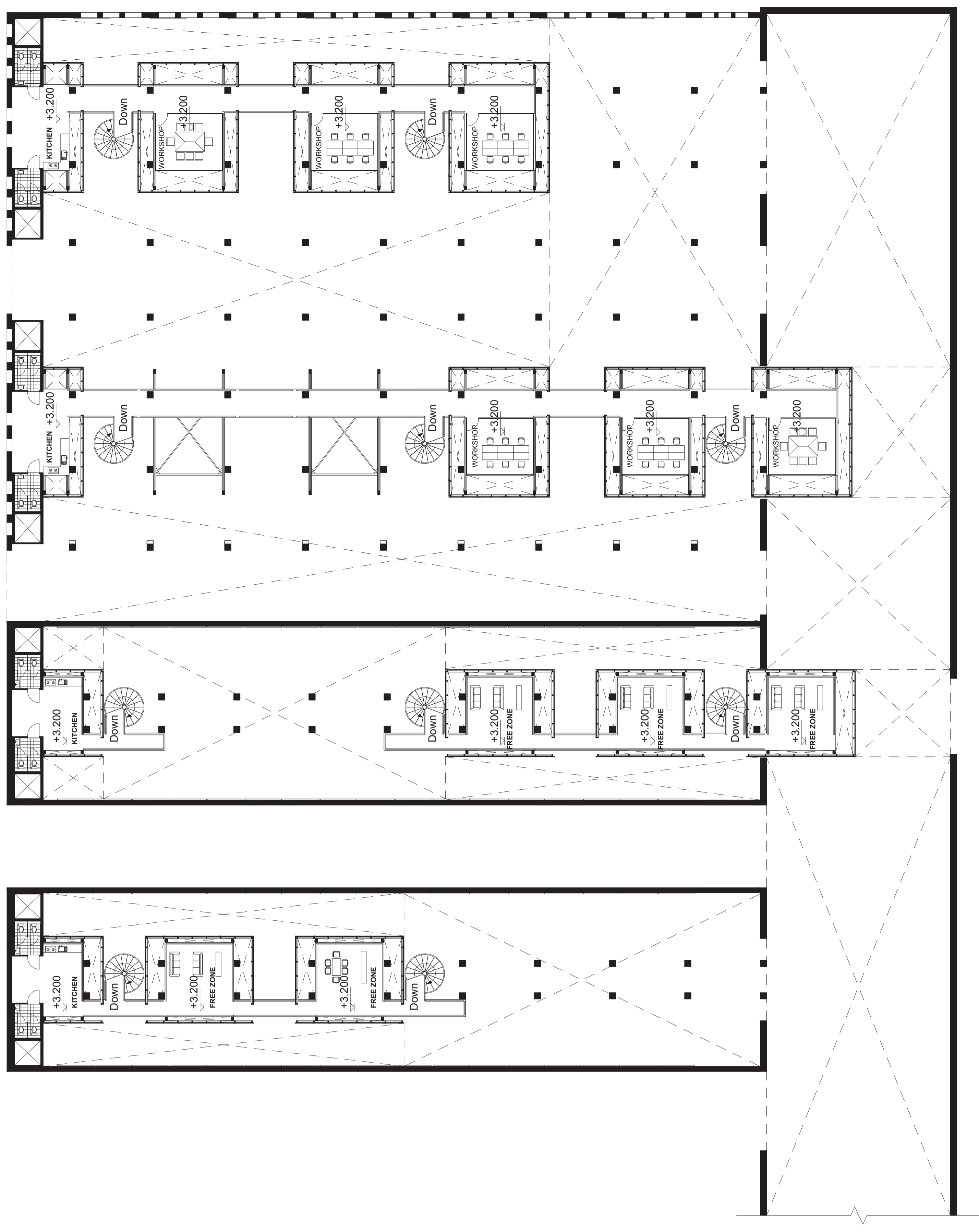


Ground Floor Plan 1:500

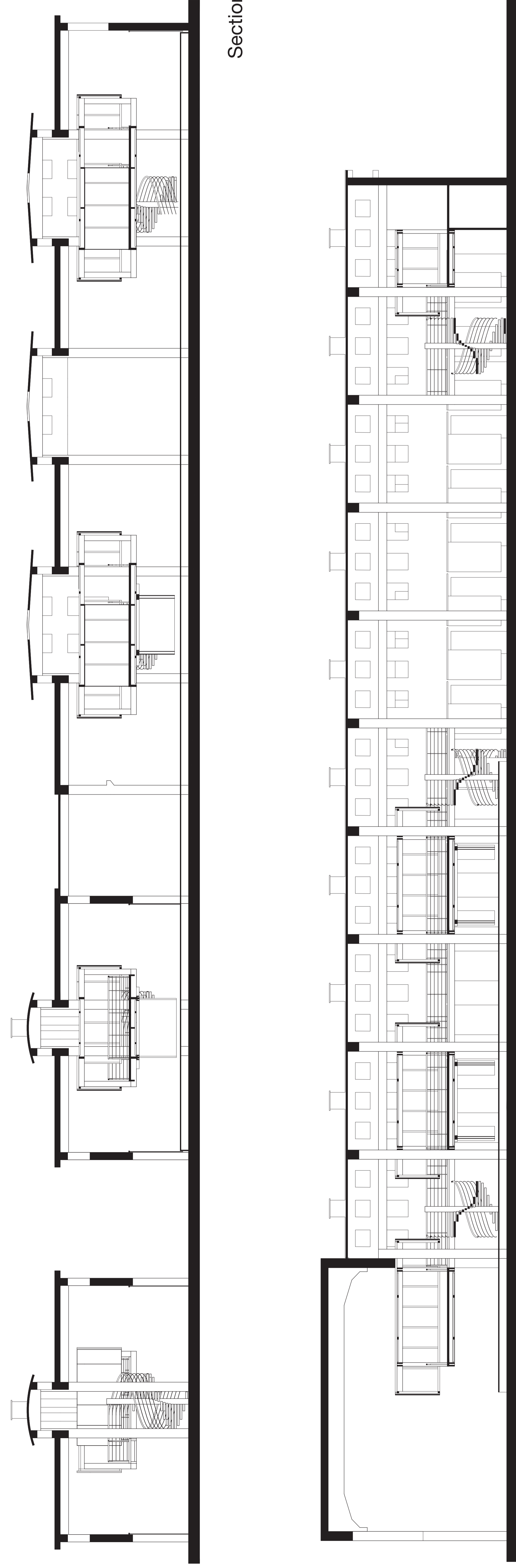




Ground Floor Plan 1:200

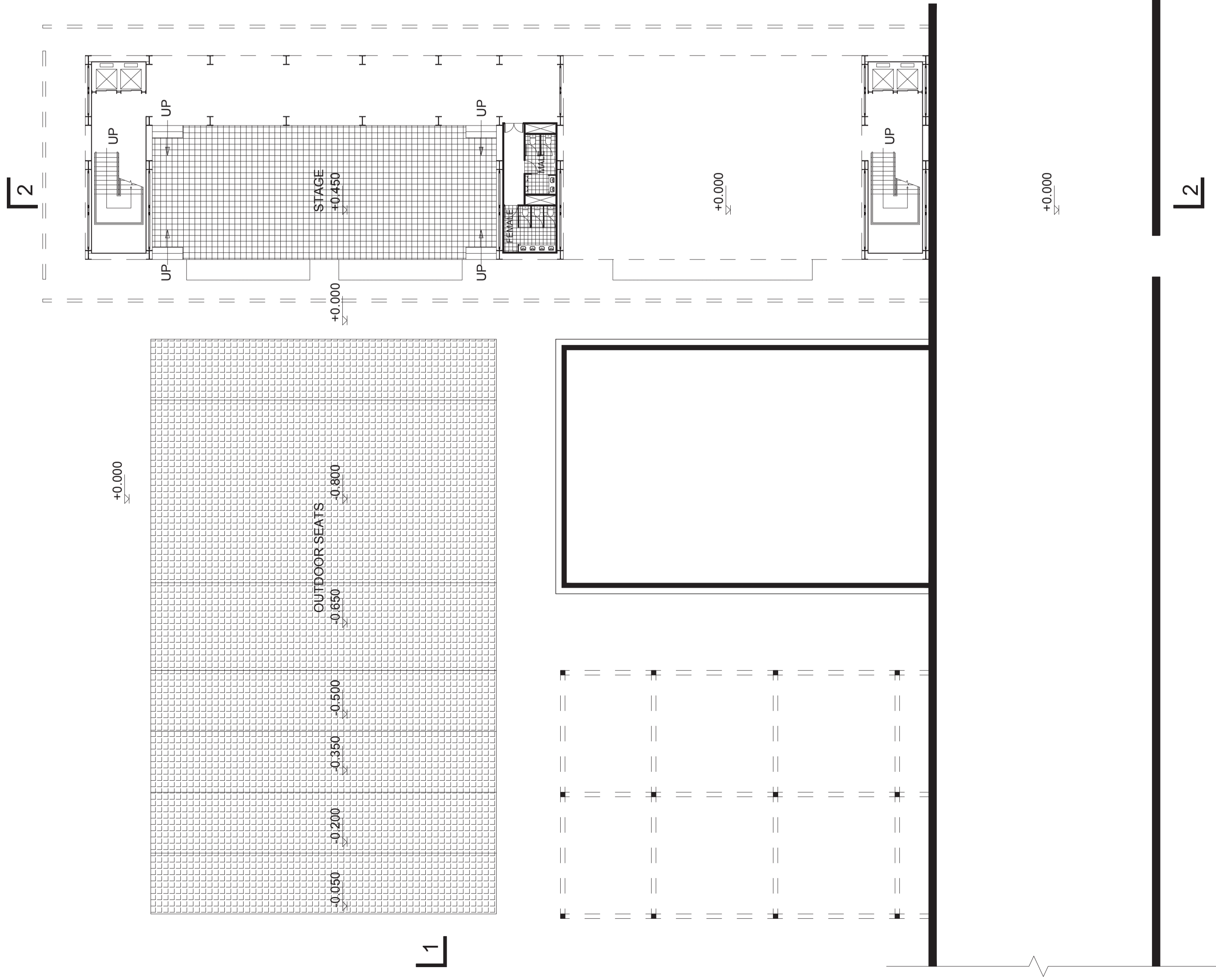


1st Floor Plan 1:200

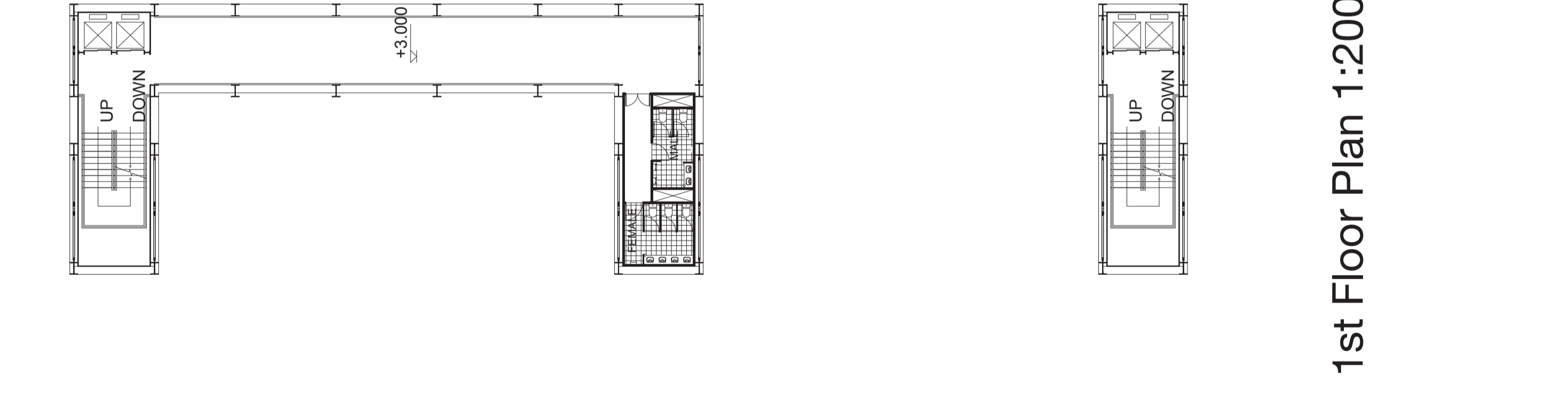


Section 1-1 1:100

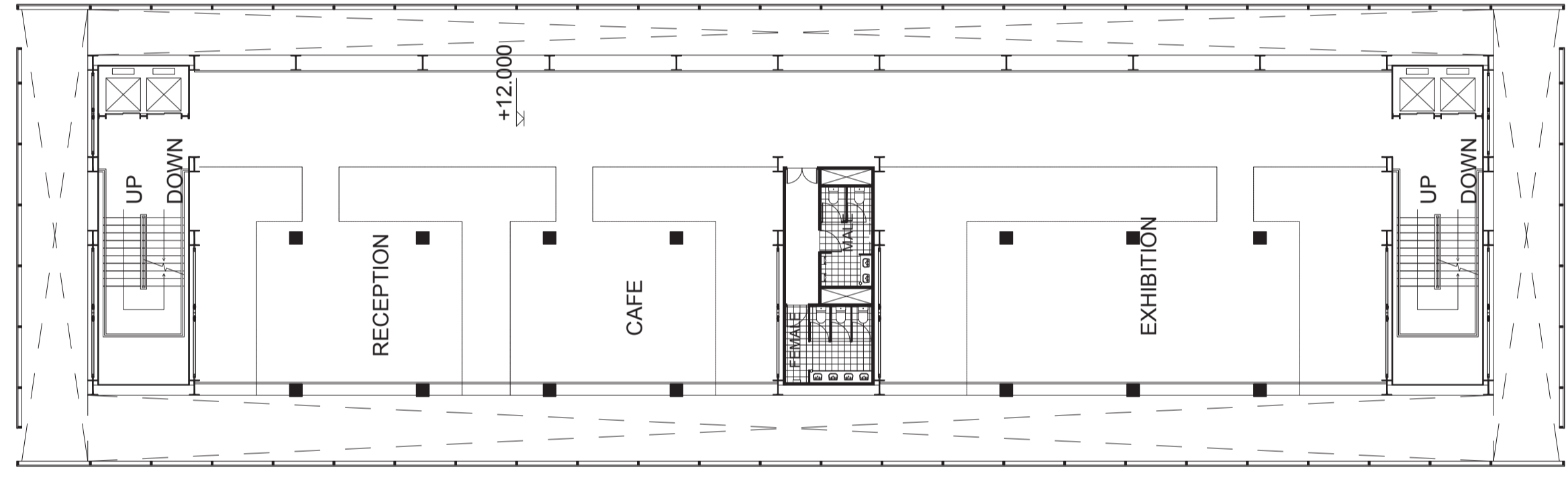
Section 2-2 1:100



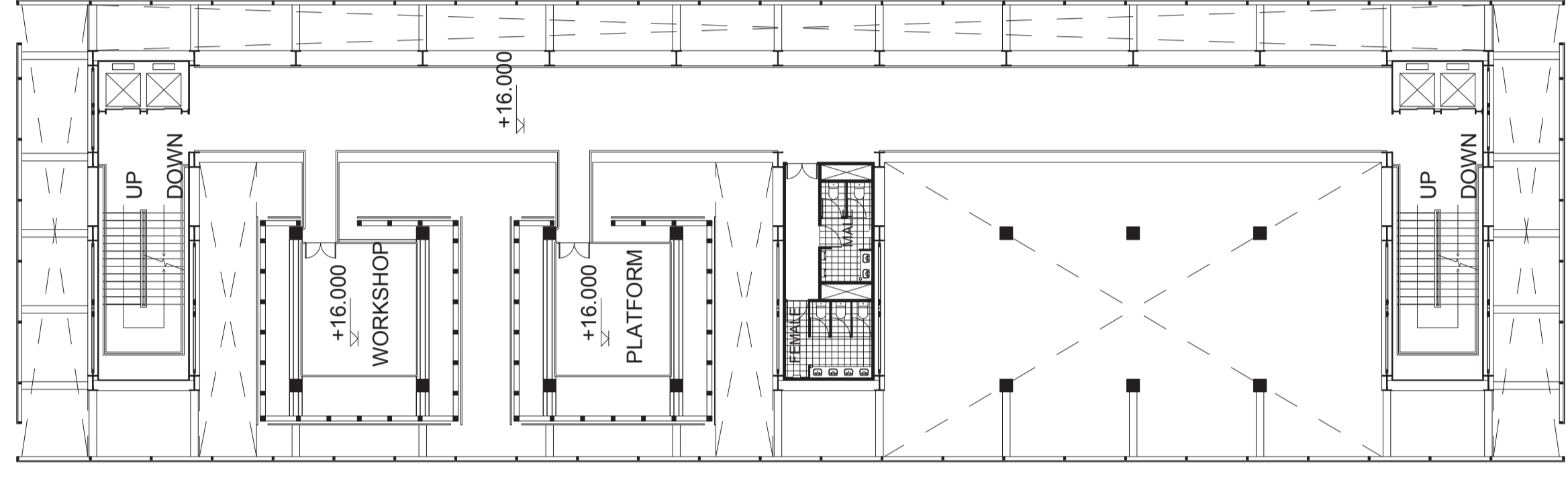
Ground Floor Plan 1:200



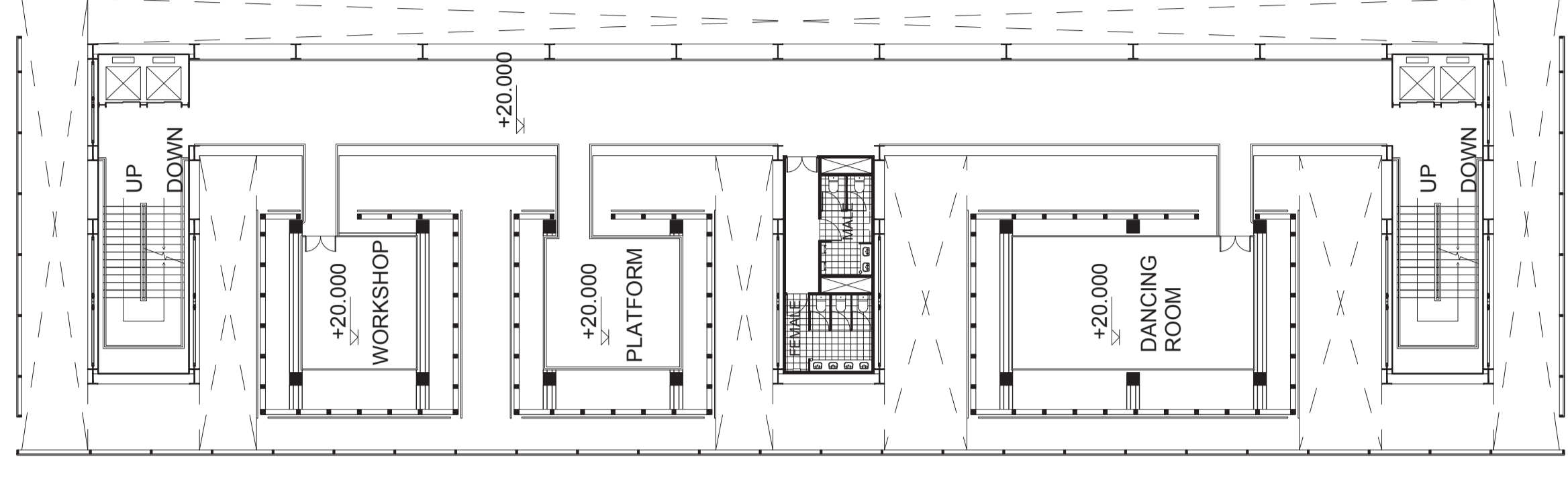
1st Floor Plan 1:200



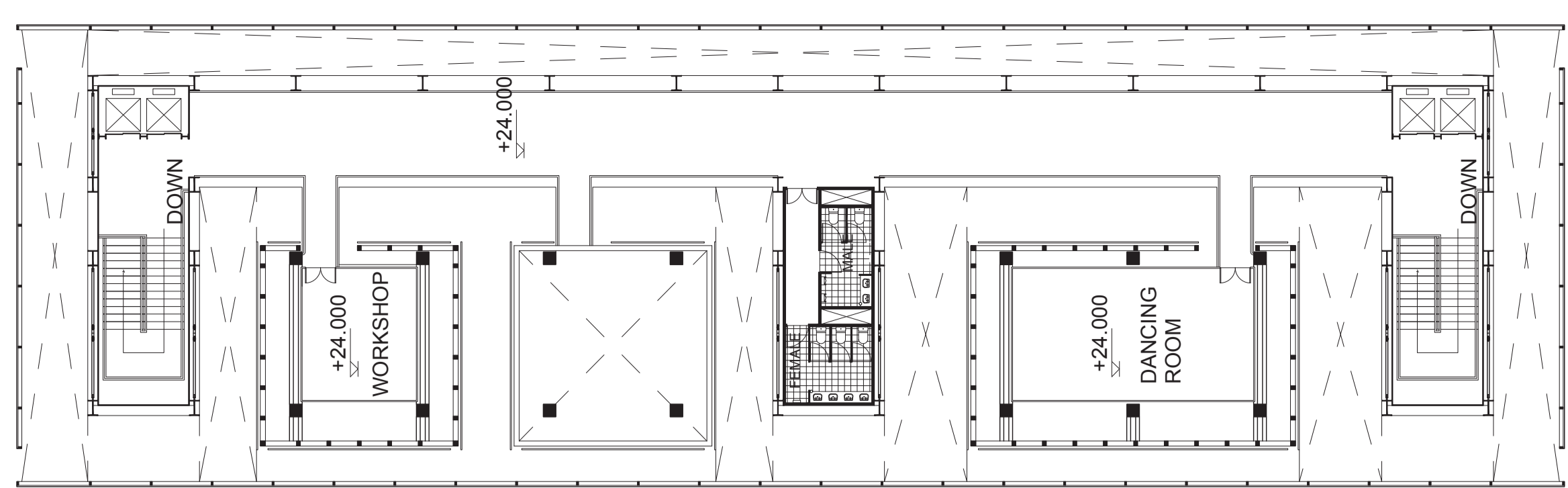
4th Floor Plan 1:200



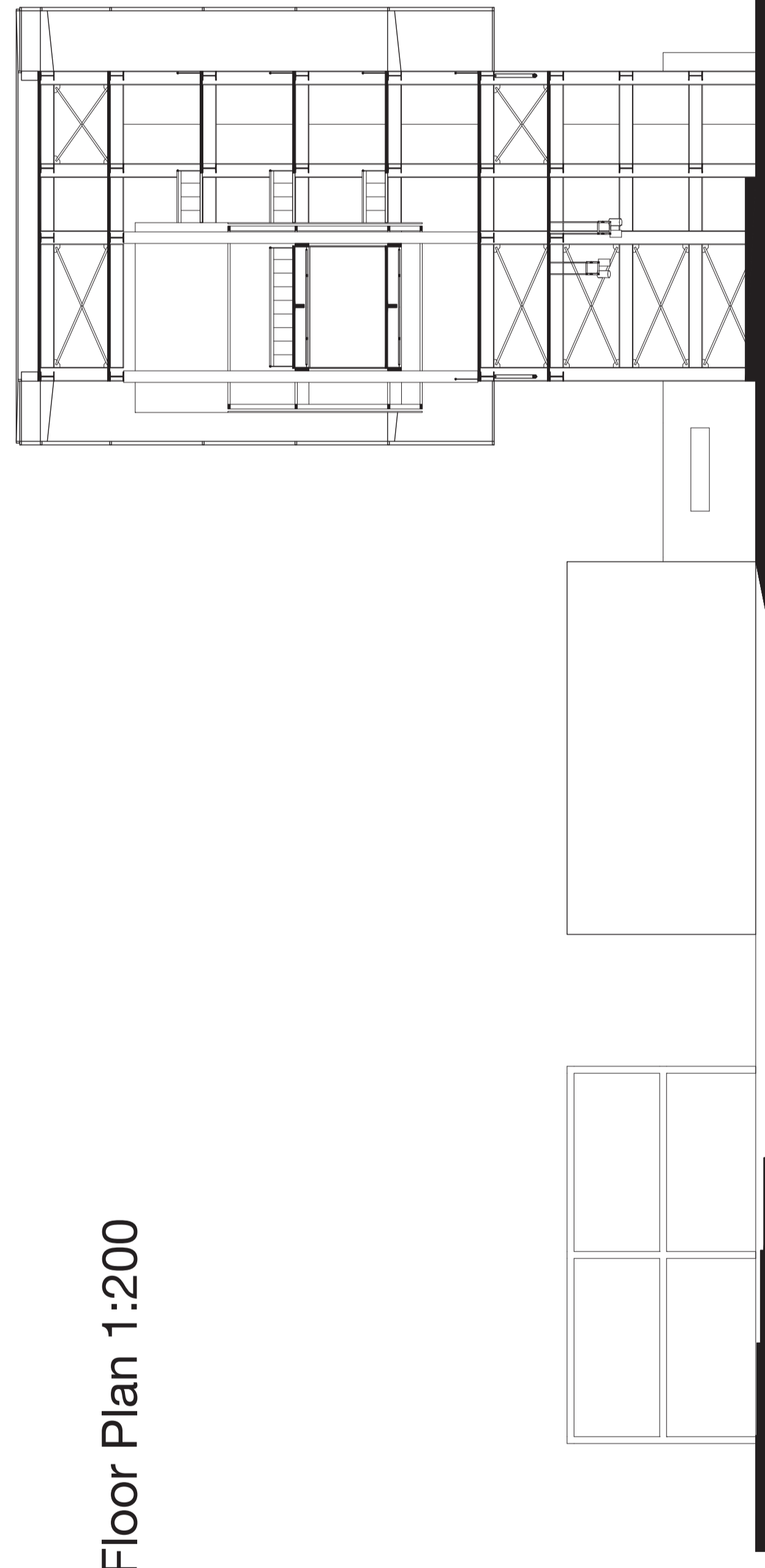
5th Floor Plan 1:200



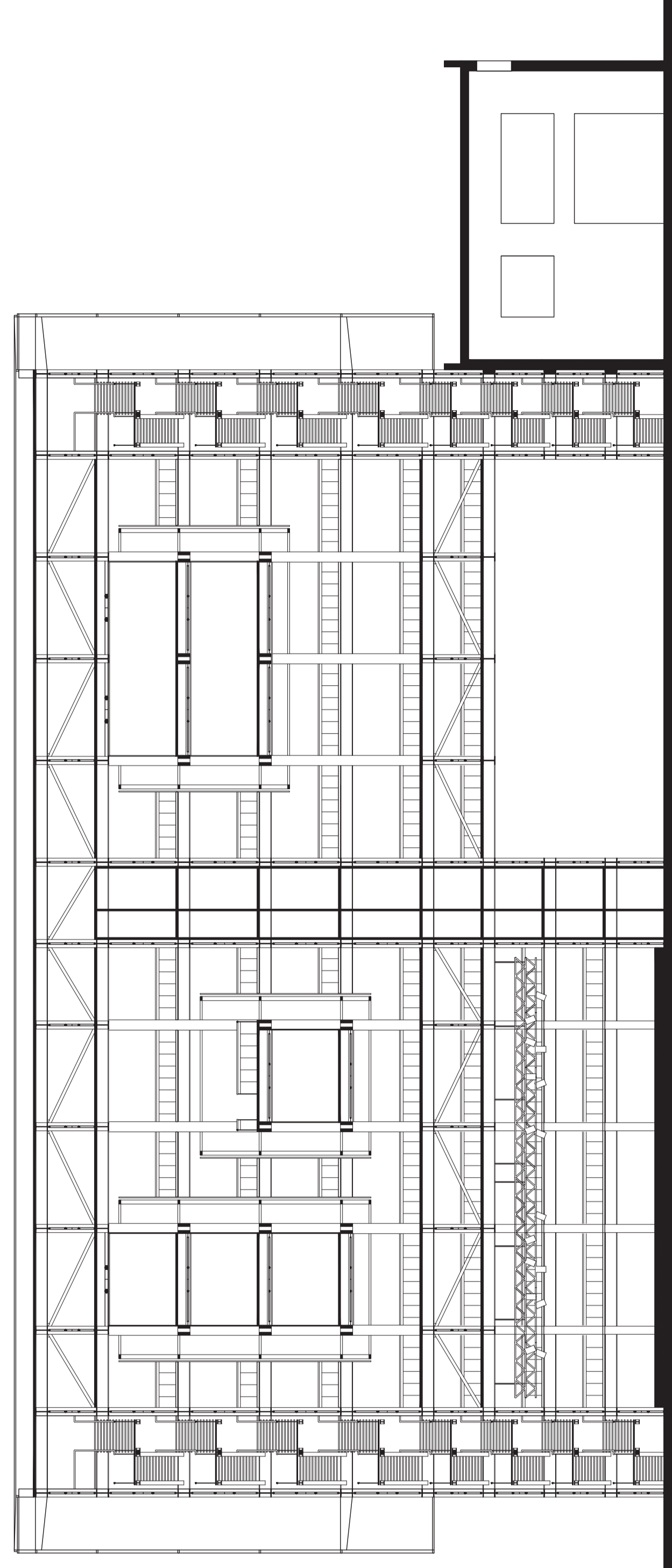
6th Floor Plan 1:200



7th Floor Plan 1:200

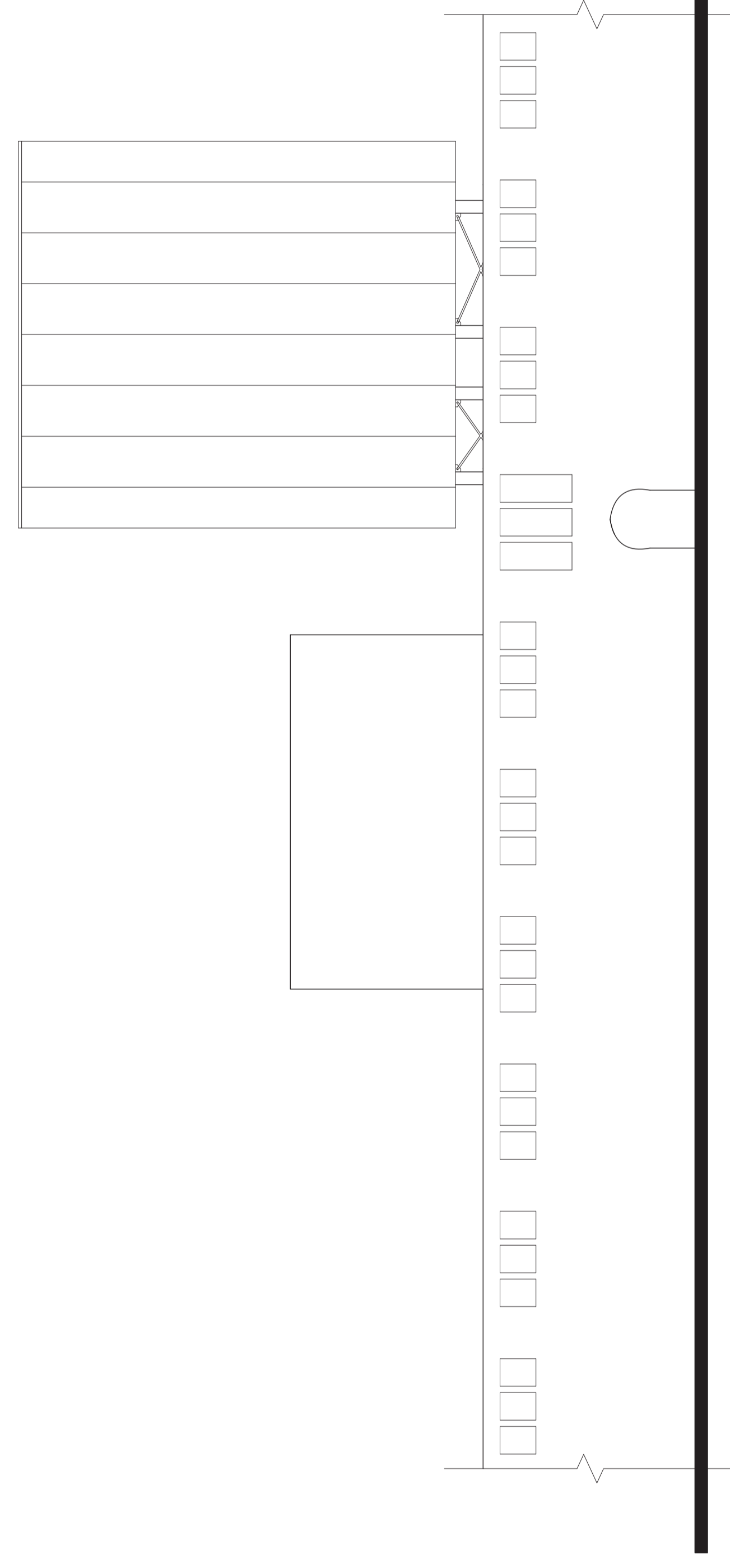


Section 1-1 1:200

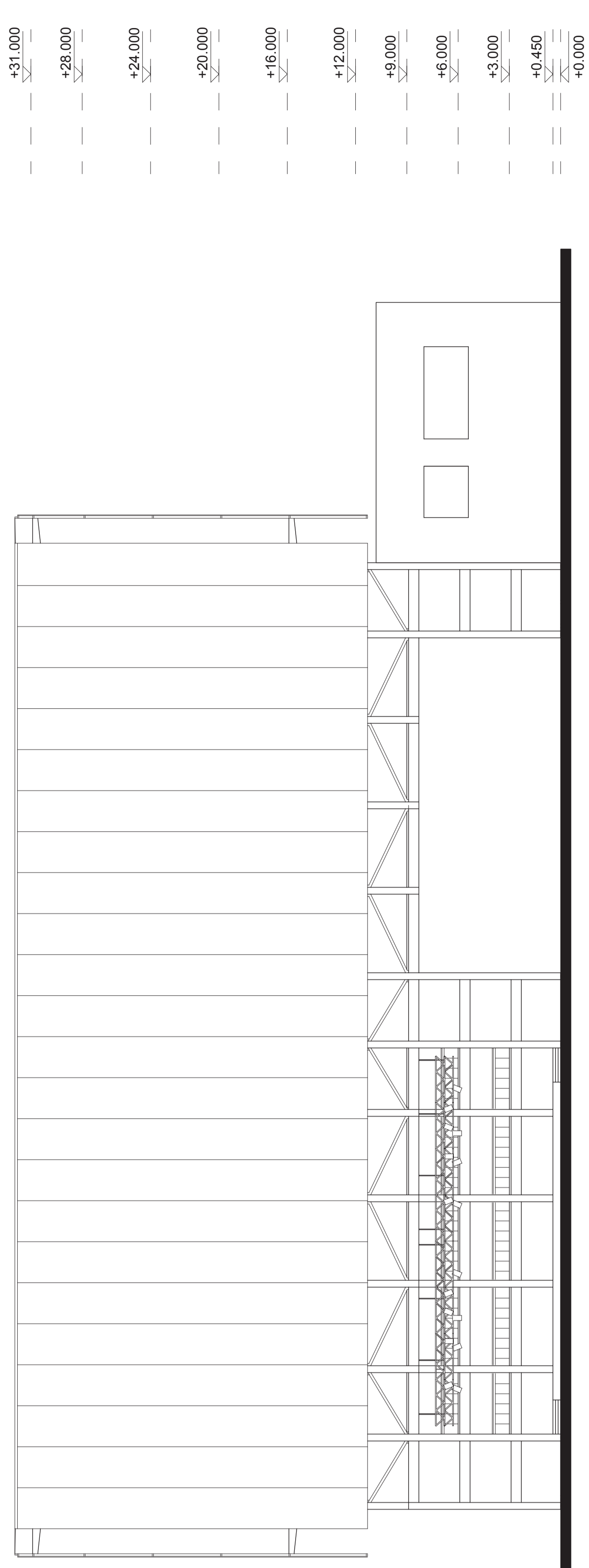


Section 2-2 1:200

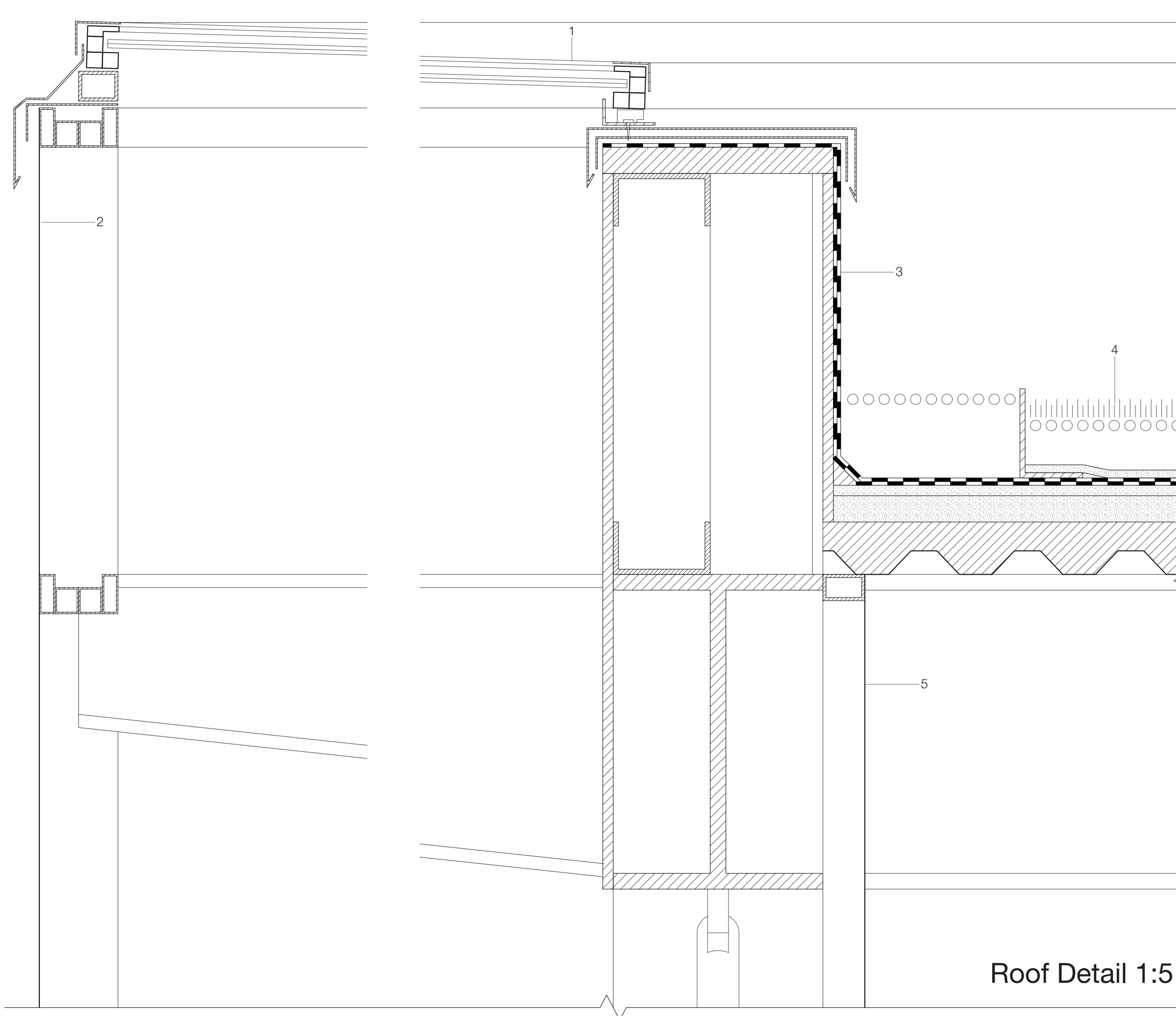
+31.000
+28.000
+24.000
+20.000
+16.000
+12.000
+9.000
+6.000
+3.000
+0.450
+0.000



South Elevation 1:200

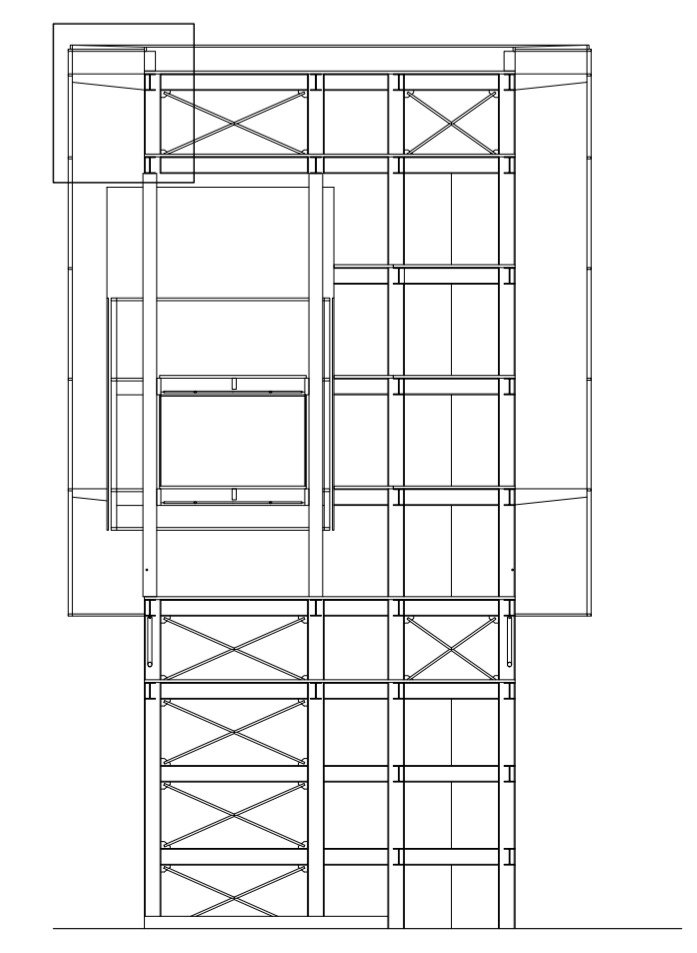


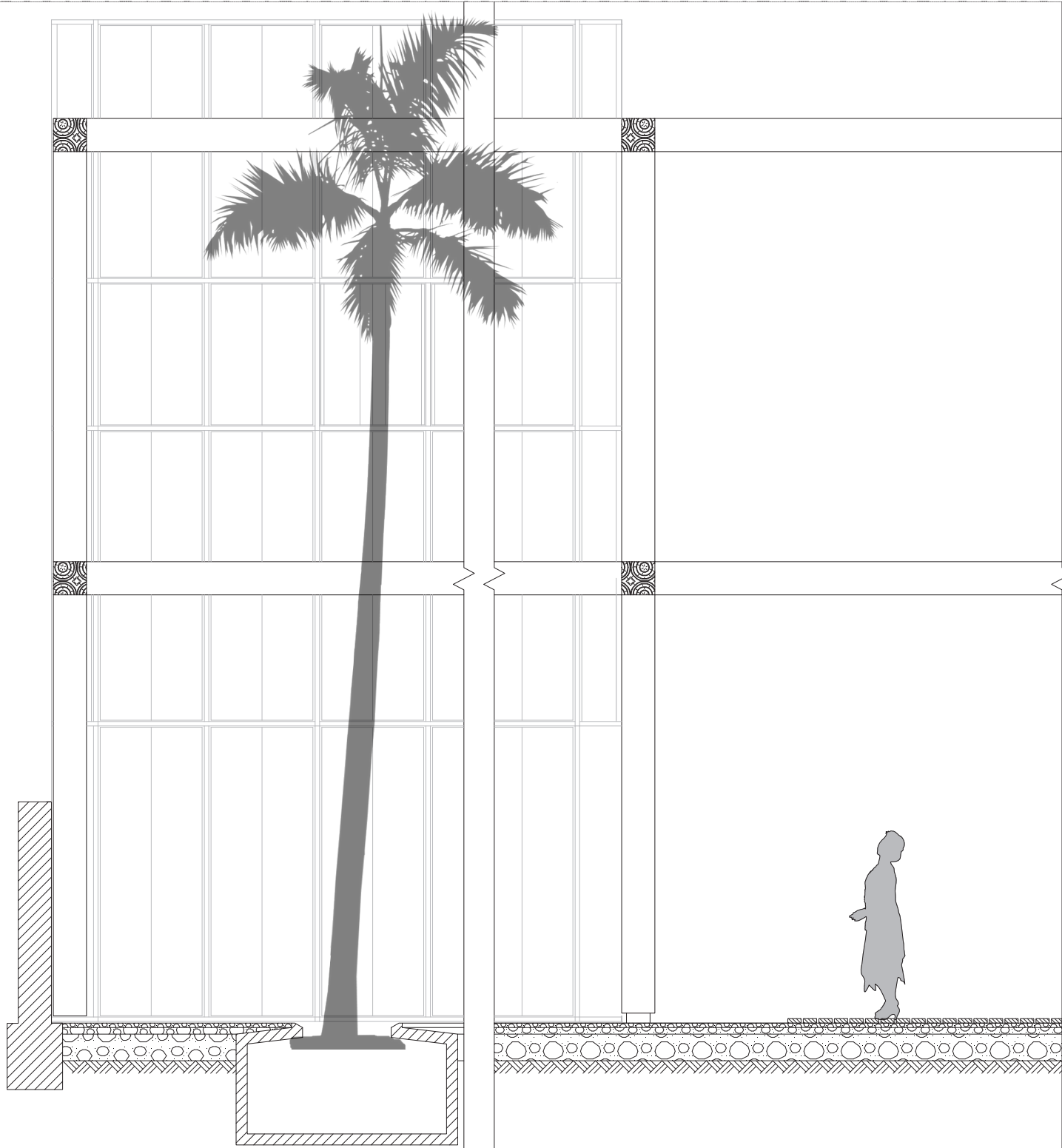
West Elevation 1:200



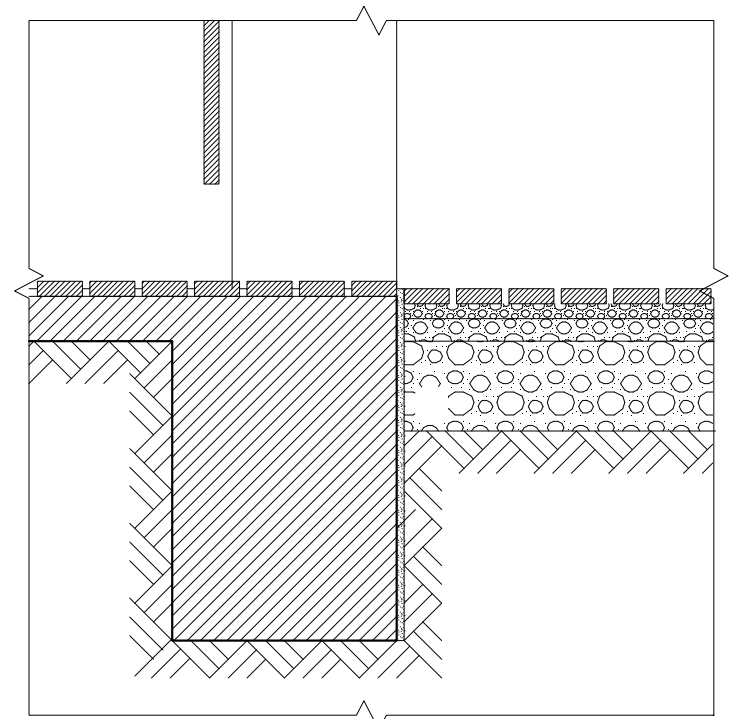
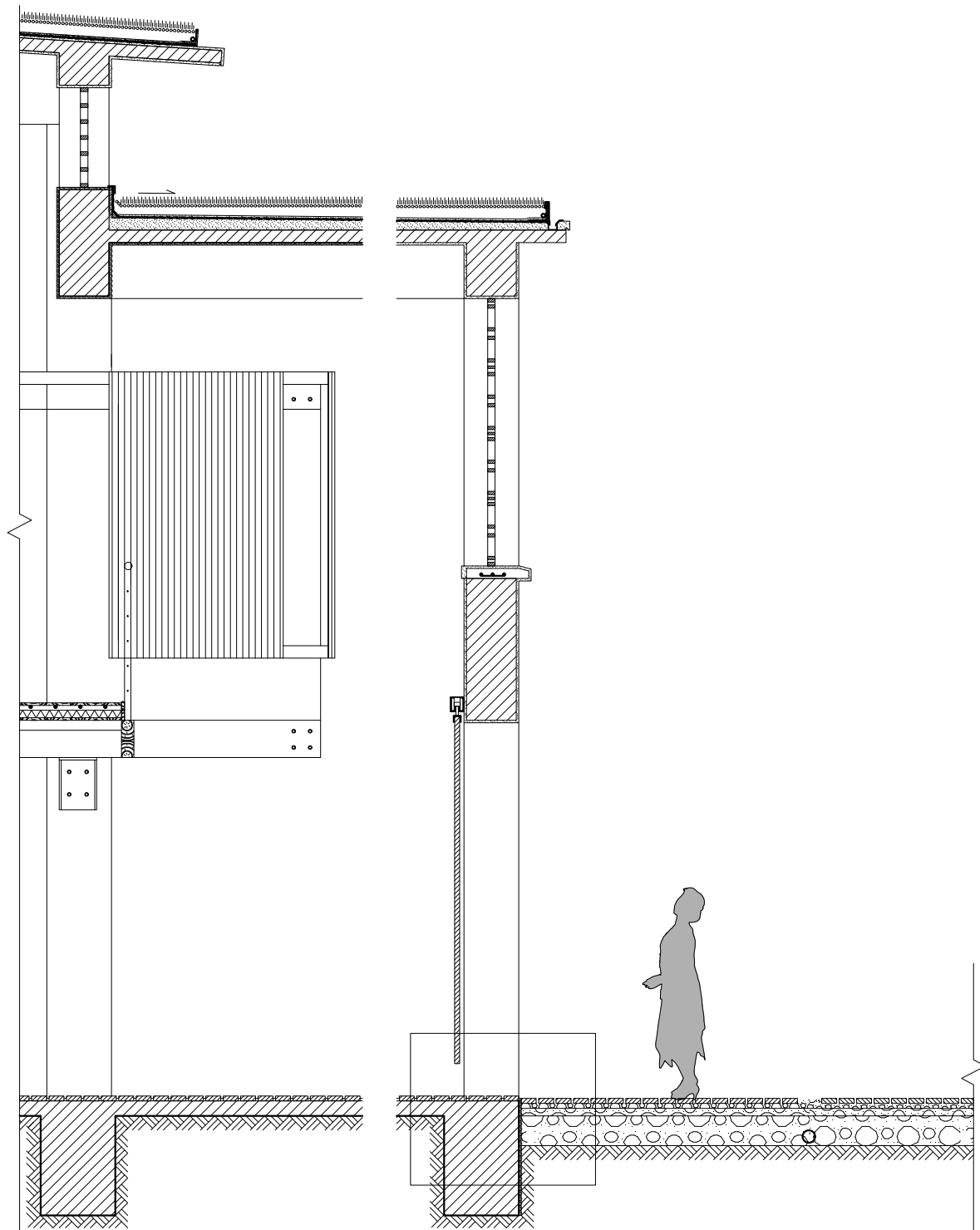
- 1 glass roof panel:
2 x 8mm laminated safety glass in alum
- 2 mambrane: white polyester textile mesh
coated with Teflon mounted in alum
- 3 2 layer bituminous membrane
20mm covering sheet
100mm steel supporting structure
20mm covering sheet
- 4 Extensive green roof:
100mm substrate
15mm drainage/protective layer
2 layer bituminous membrane
50-110mm cement motar to fall
100mm concrete with steel deck
- 5 membrane: grey polyester textile mesh
coated with Teflon mounted in alum

Roof Detail 1:5



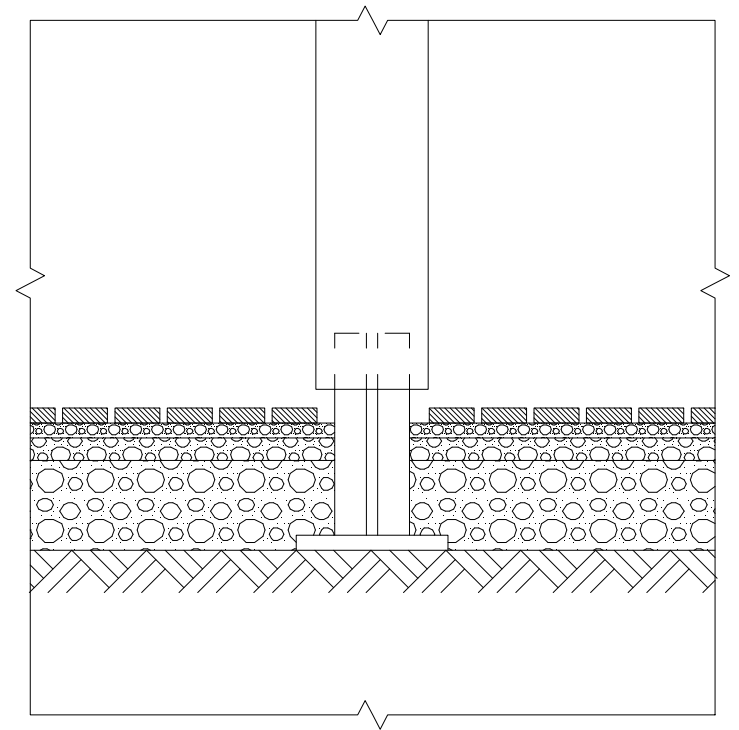
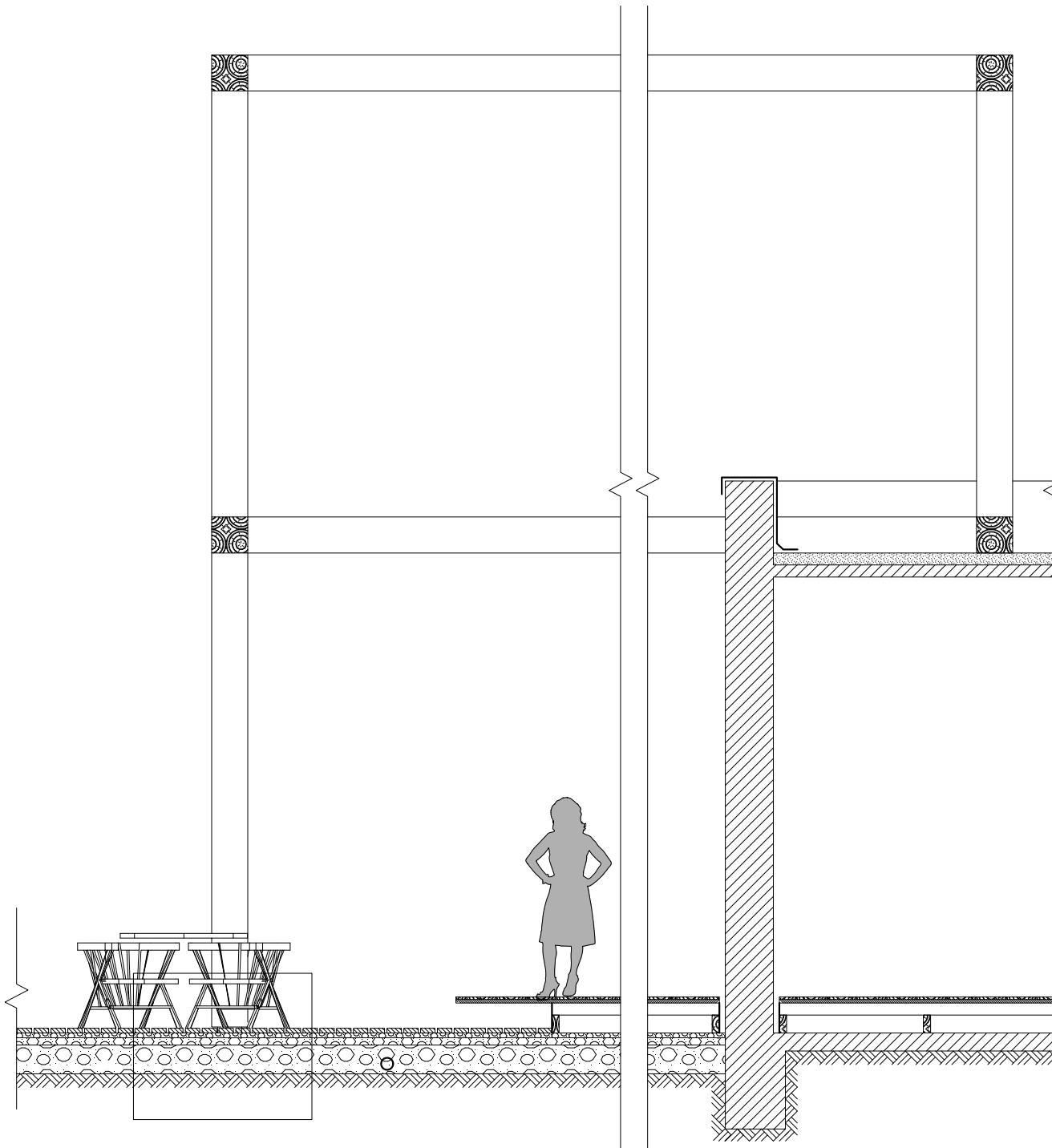


Detail 1-1 1:20



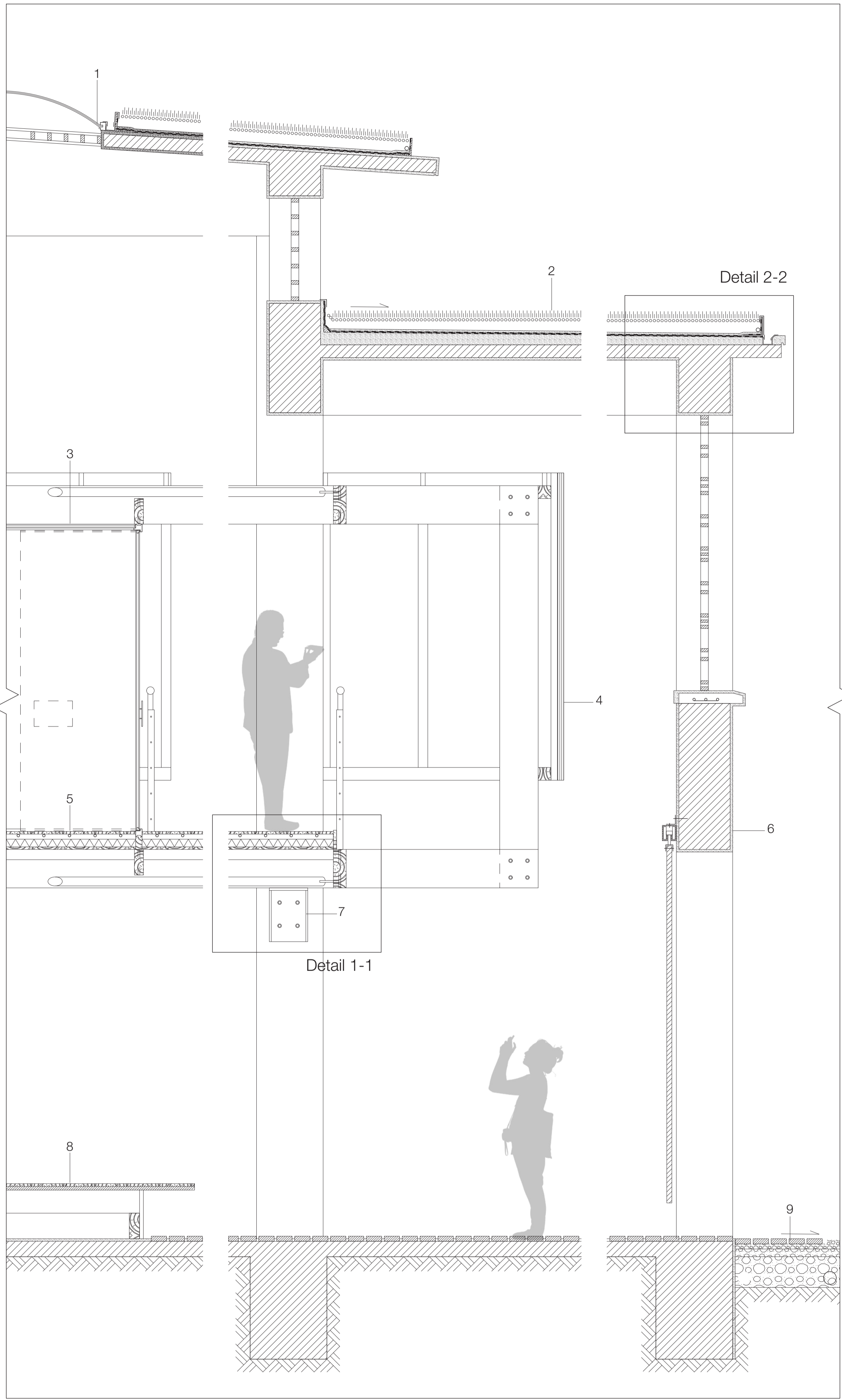
Detail 2-2 1:50

Detail 2-1 1:20



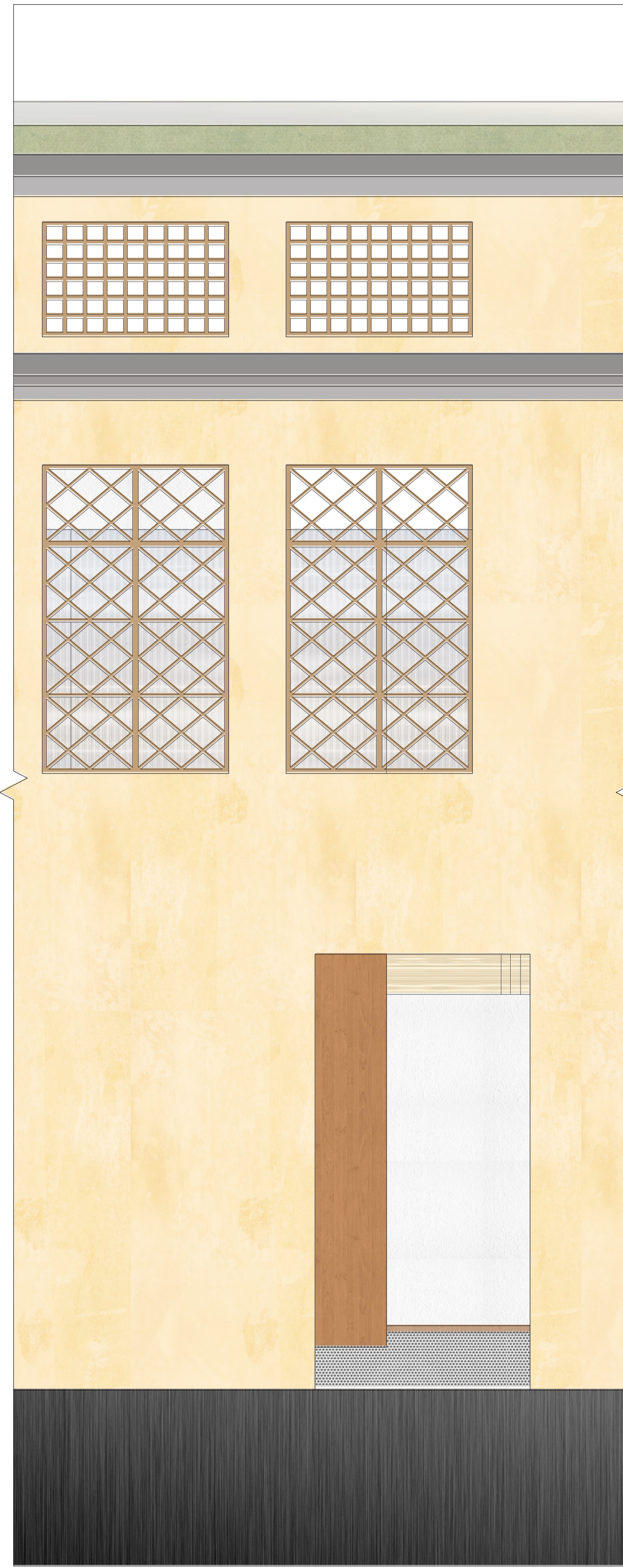
Detail 3-2 1:50

Detail 3-1 1:20



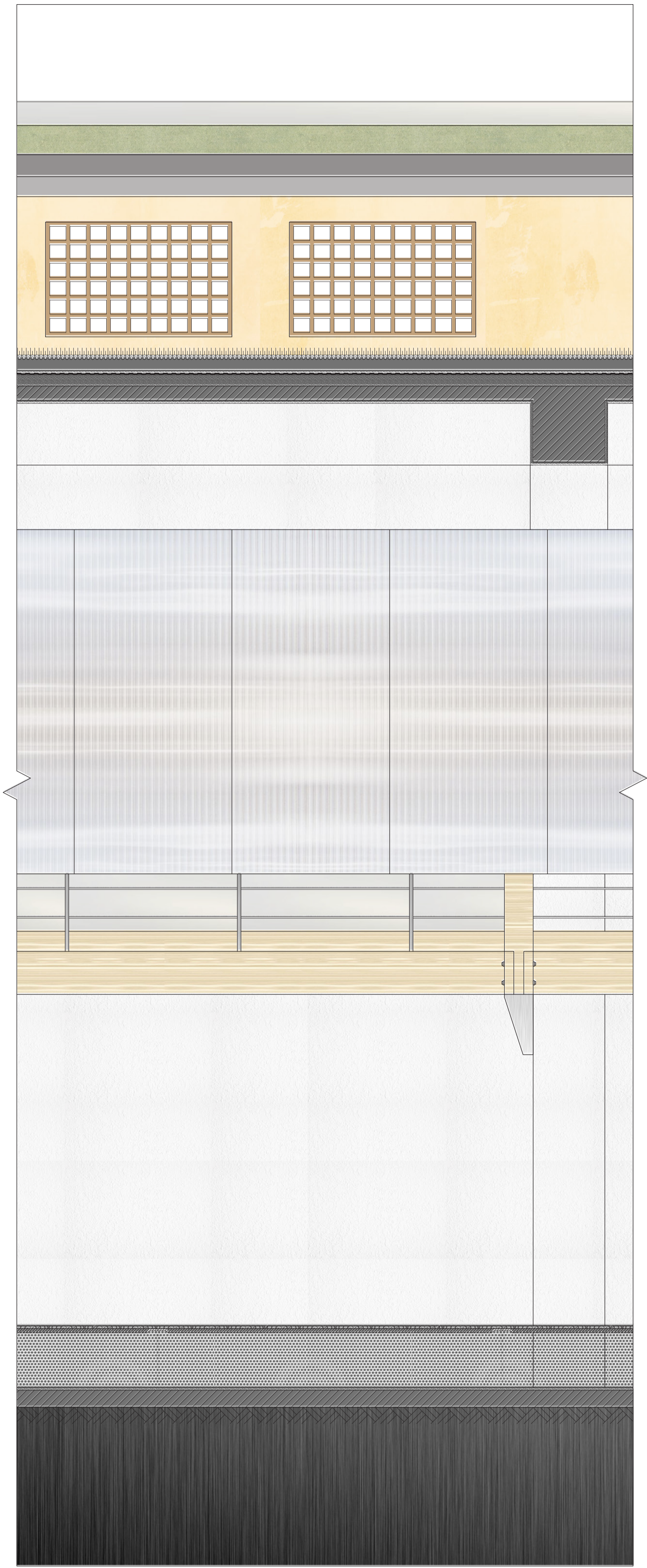
Detail Section 1:20

- | | | |
|---|---|--|
| 1 Triple glazed rooflight | 3 50mm rod bracing
300mm wooden beam
Structural insulated glazing:
8mm toughened glass+
15mm drainage/protective layer
2 layer polymer-modified bituminous membrane
50-110mm cement mortar to fall (existing)
100mm concrete panels (existing)
20mm plaster | 5 floor covering:
30mm parquet with oak finishing
40mm flexible adhesive with water heating pipe
60mm plywood insulation
20mm floor sheeting |
| 2 Extensive green roof:
100mm substrate
15mm drainage/protective layer
2 layer polymer-modified bituminous membrane
50-110mm cement mortar to fall (existing)
100mm concrete panels (existing)
20mm plaster | 4 20mm Polycarbonate sheeting on
50/50/3 mm alum
100/100 mm wooden supporting structure | 6 20mm mortar finishing
400mm concrete wall (existing)
20mm plaster
40mm slide door |



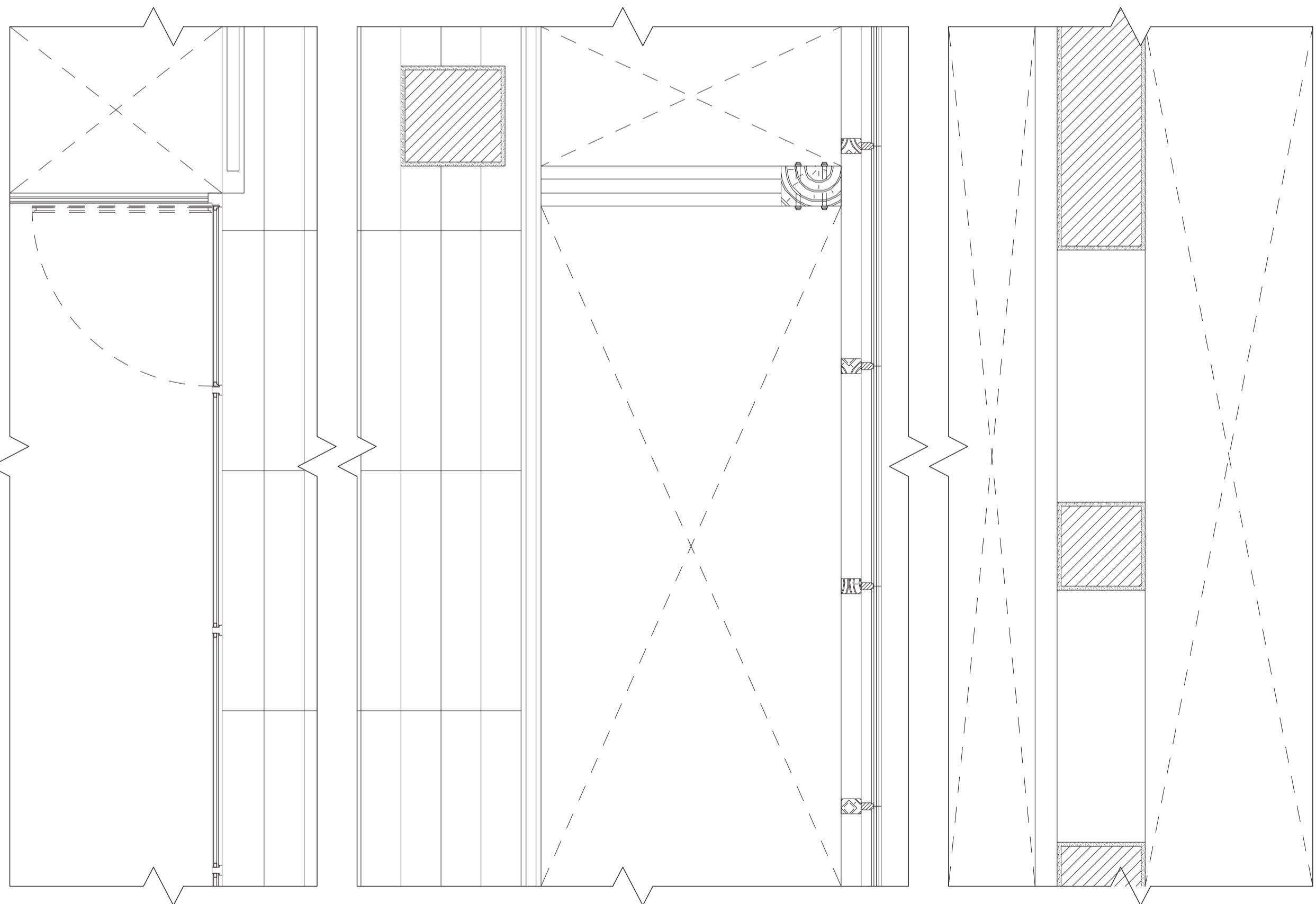
Exterior Elevation 1:20

- | | |
|---|---|
| 7 steel bracket with expansion anchor bolt | 10 floor covering:
30mm parquet with oak finishing
aluminum sealing sheet
40mm flexible adhesive with water heating pipe
60mm plywood insulation
20mm floor sheeting |
| 8 30mm parquet with oak finishing
30mm additional floor slab
350mm steel supports
20mm cement mortar finishing
120mm concrete panels (existing) | 11 100/300 mm timber beam with
20mm steel sheet and bolts |
| 9 120/120/40 mm infiltration concrete paving
40mm aggregate chips
60mm stone washed
240mm aggregate | 12 50mm rod bracing |

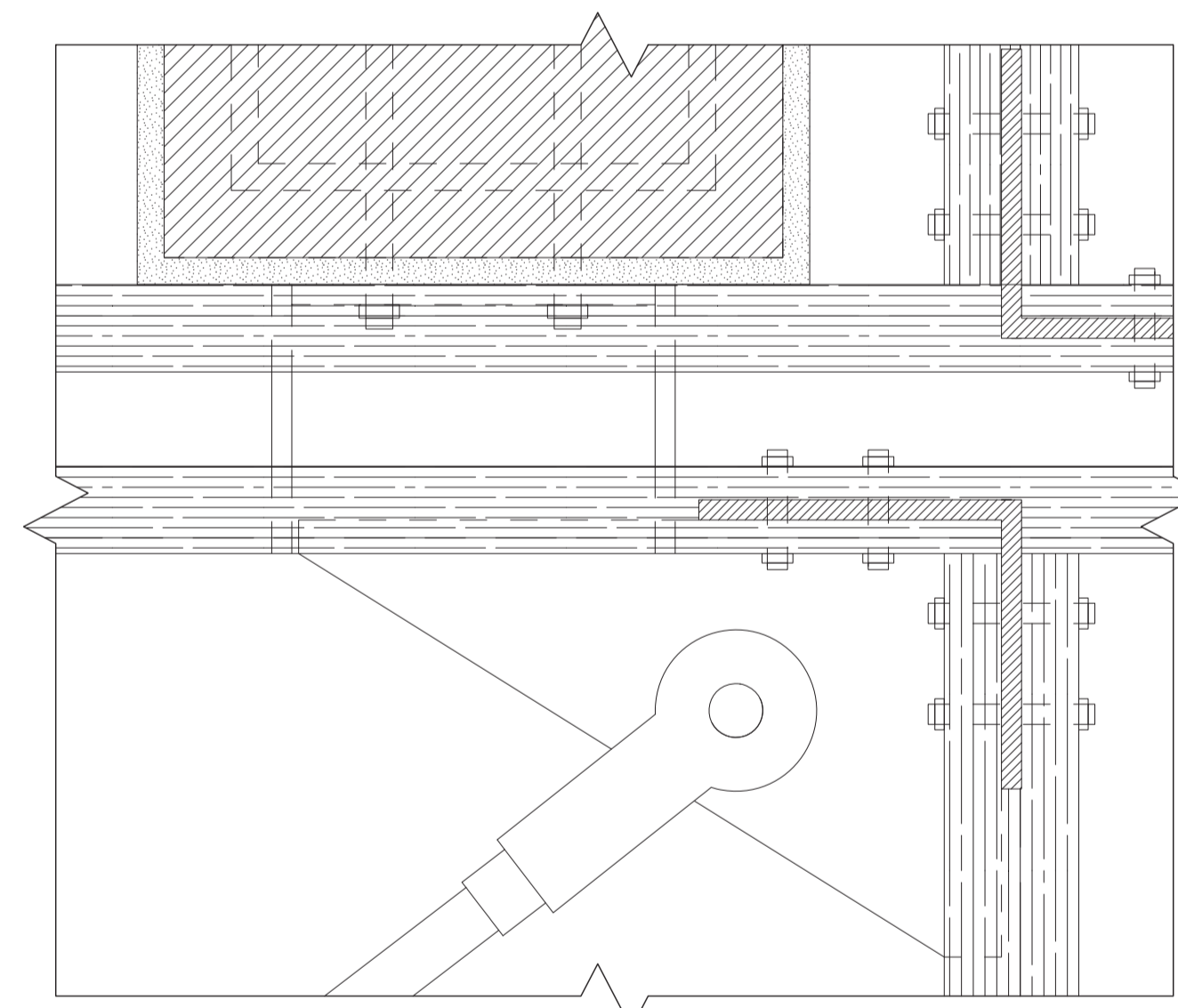


Interior Elevation 1:20

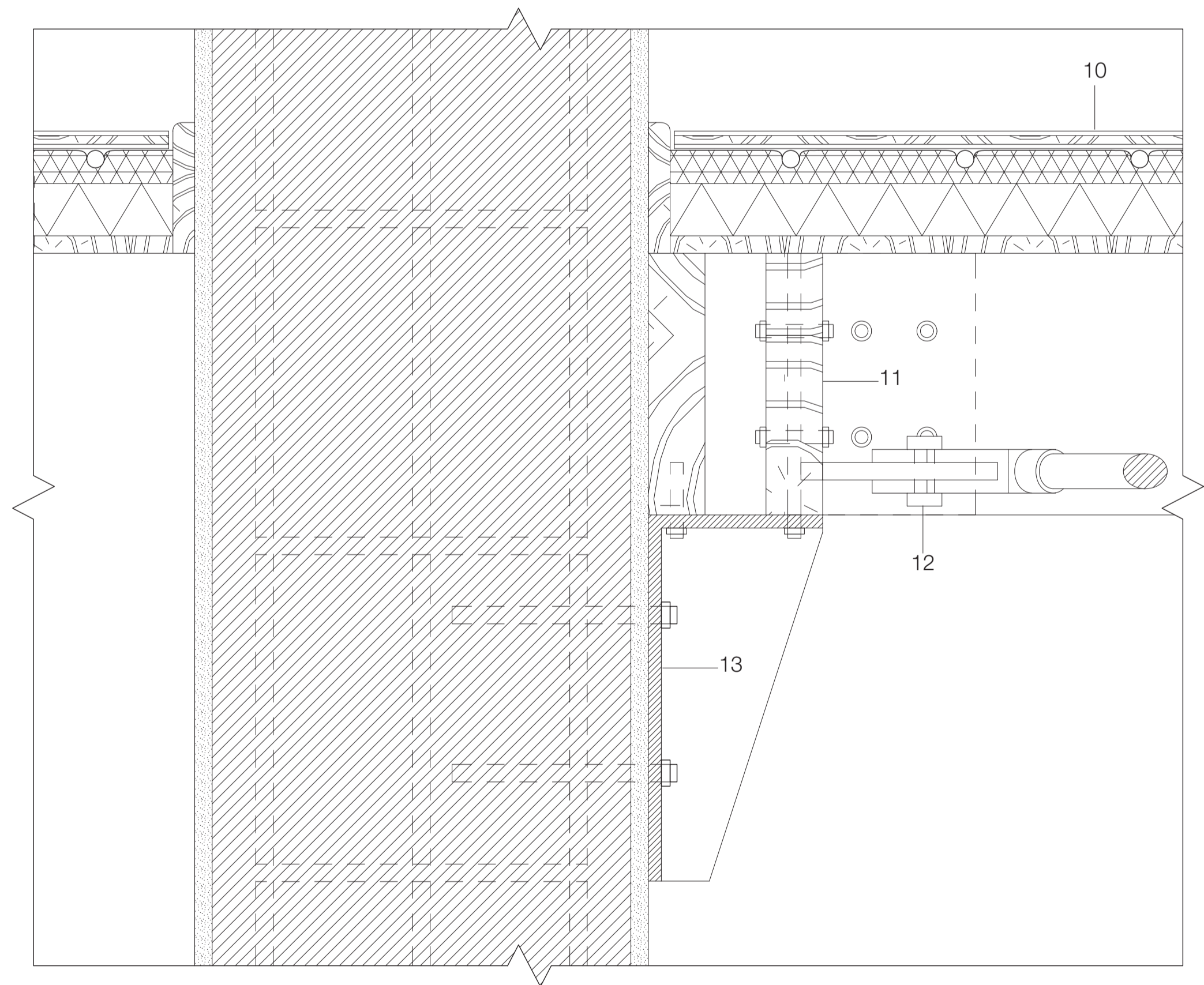
- | | |
|--|---|
| 13 steel bracket with expansion anchor bolts
20mm plaster
500/500 mm concrete column (existing) | 15 3mm aluminum cover
10mm L shape steel
3mm polymer-modified bituminous membrane |
| 14 Extensive green roof:
100mm substrate
15mm drainage/protective layer
2 layer polymer-modified bituminous membrane
50-110mm cement mortar to fall (existing)
100mm concrete panels (existing)
20mm plaster | 16 drainage pipe
17 70mm cement mortar stripe (existing) |



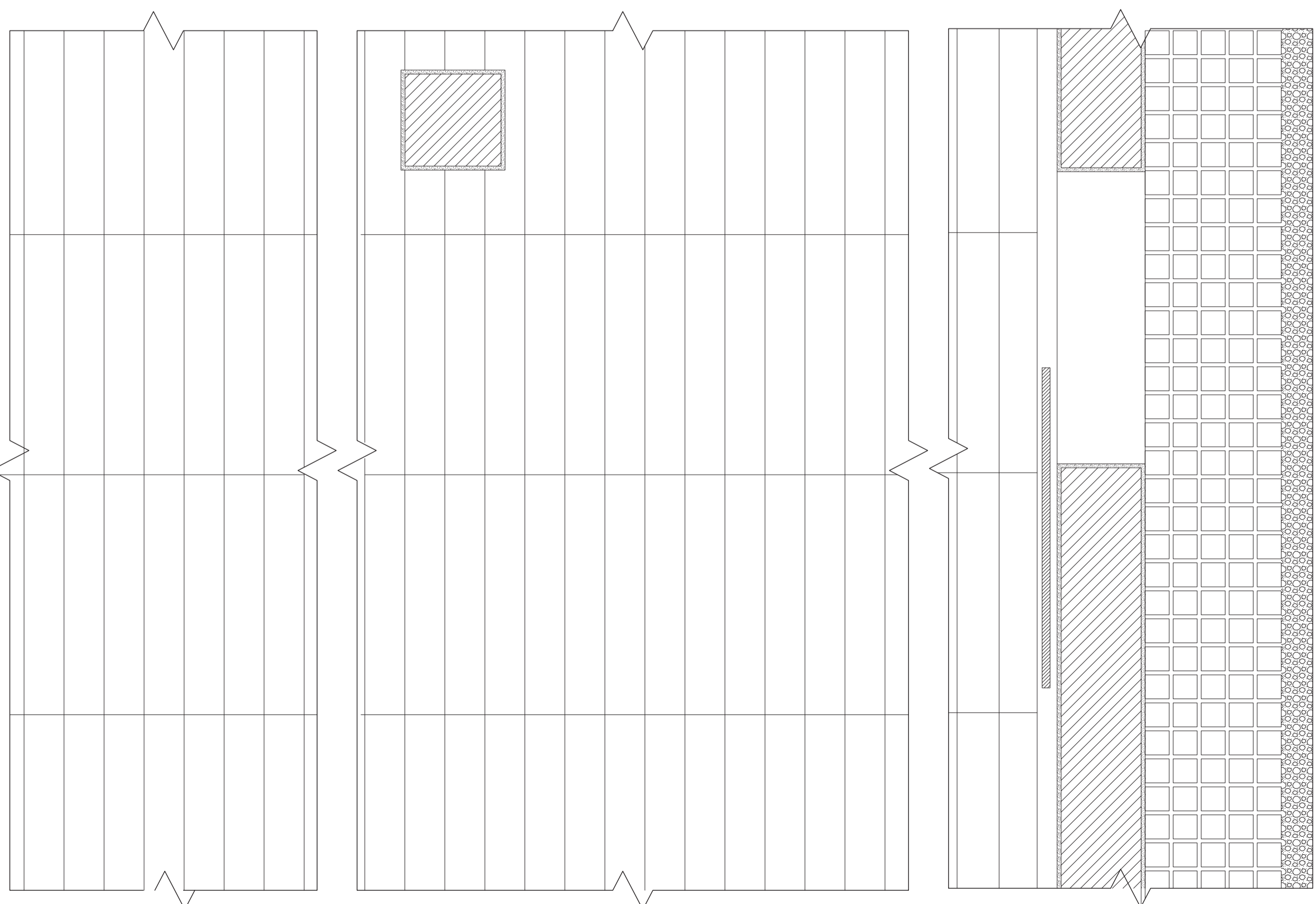
Detail 1st Floor Plan 1:20



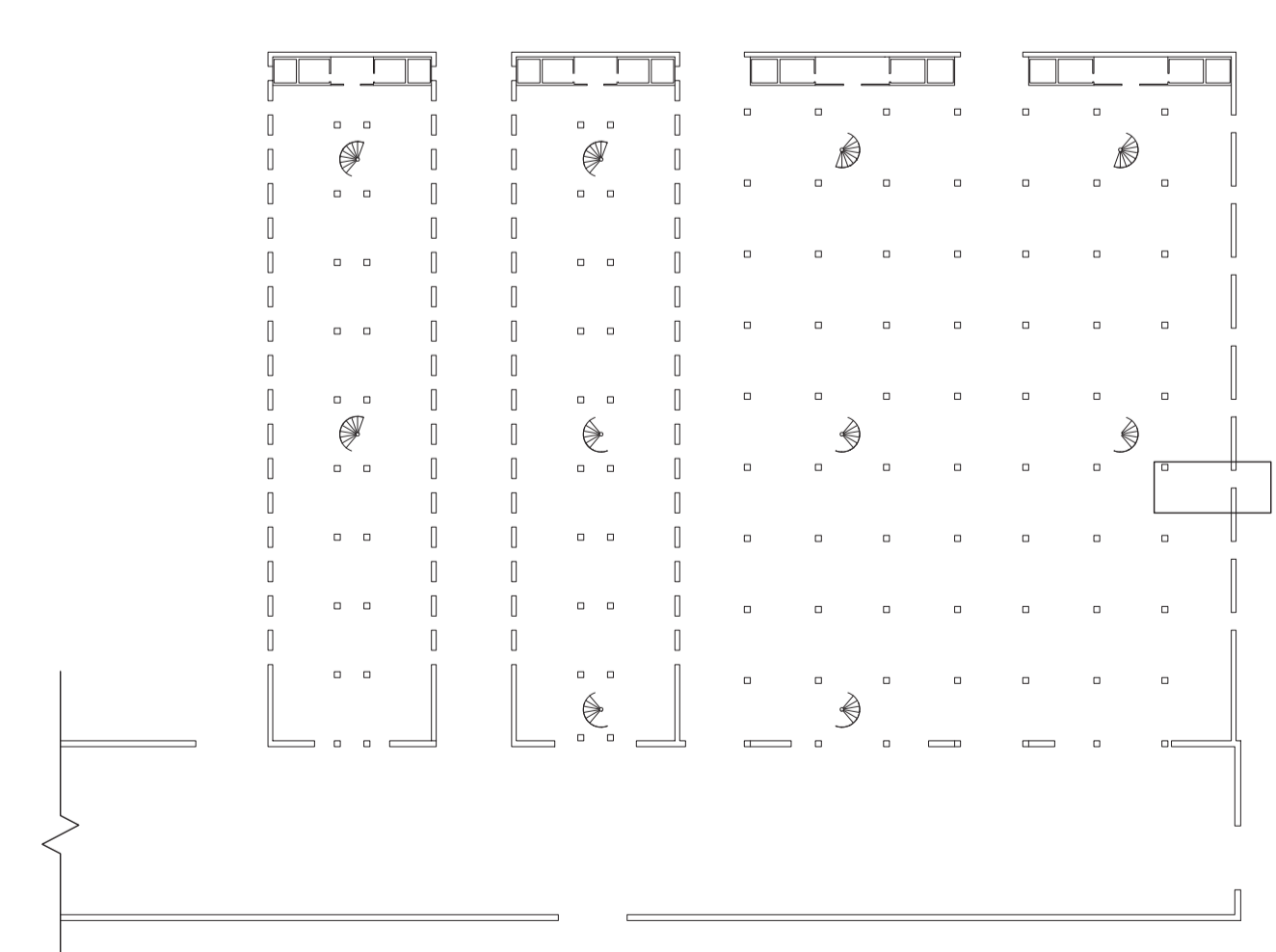
Detail 1-1 Plan 1:5



Detail 1-1 Section 1:5



Detail Ground Floor Plan 1:20



Detail 2-2 Section 1:5

