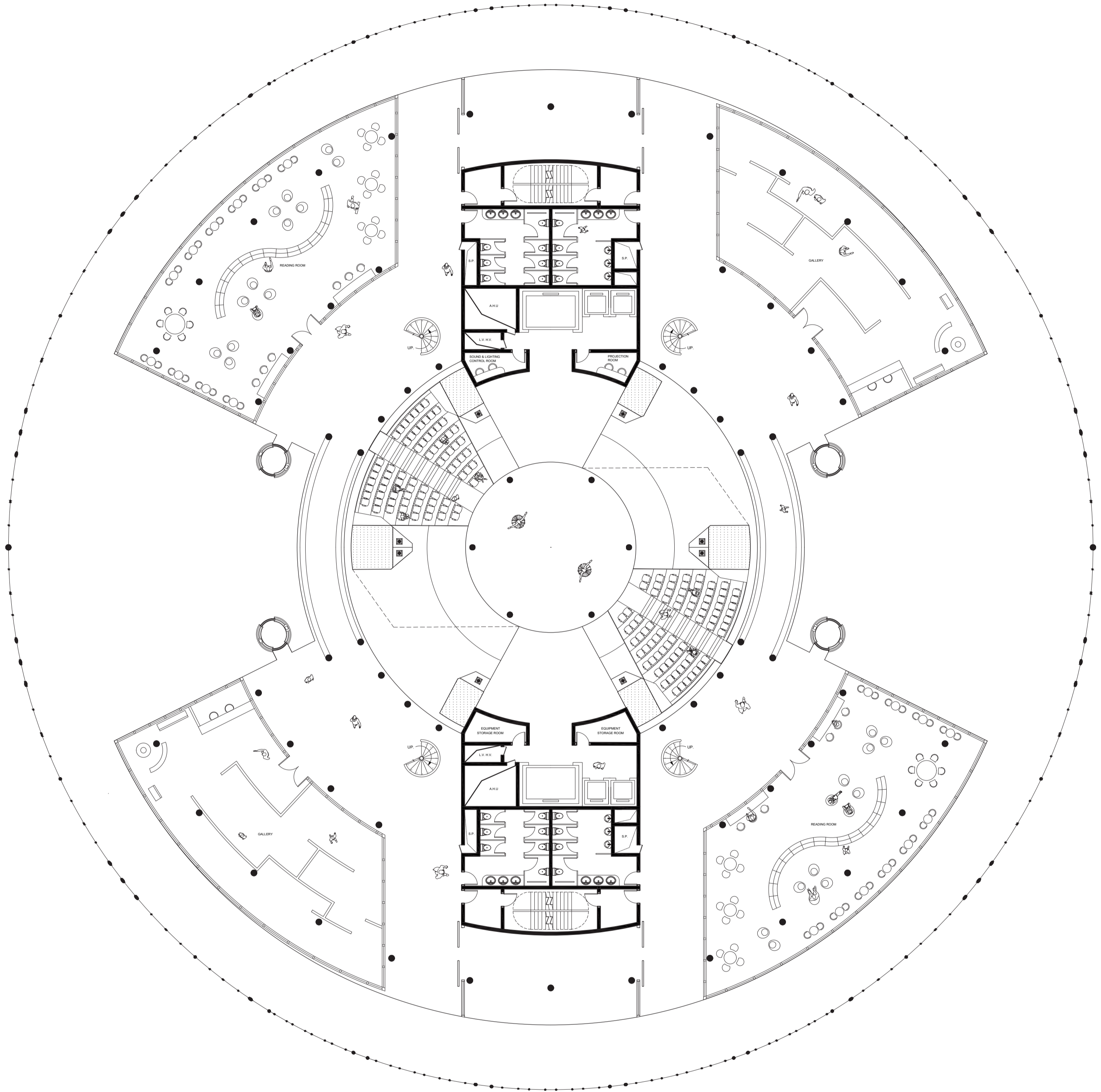


SCHIPHOL THEATRE

FLOOR PLAN



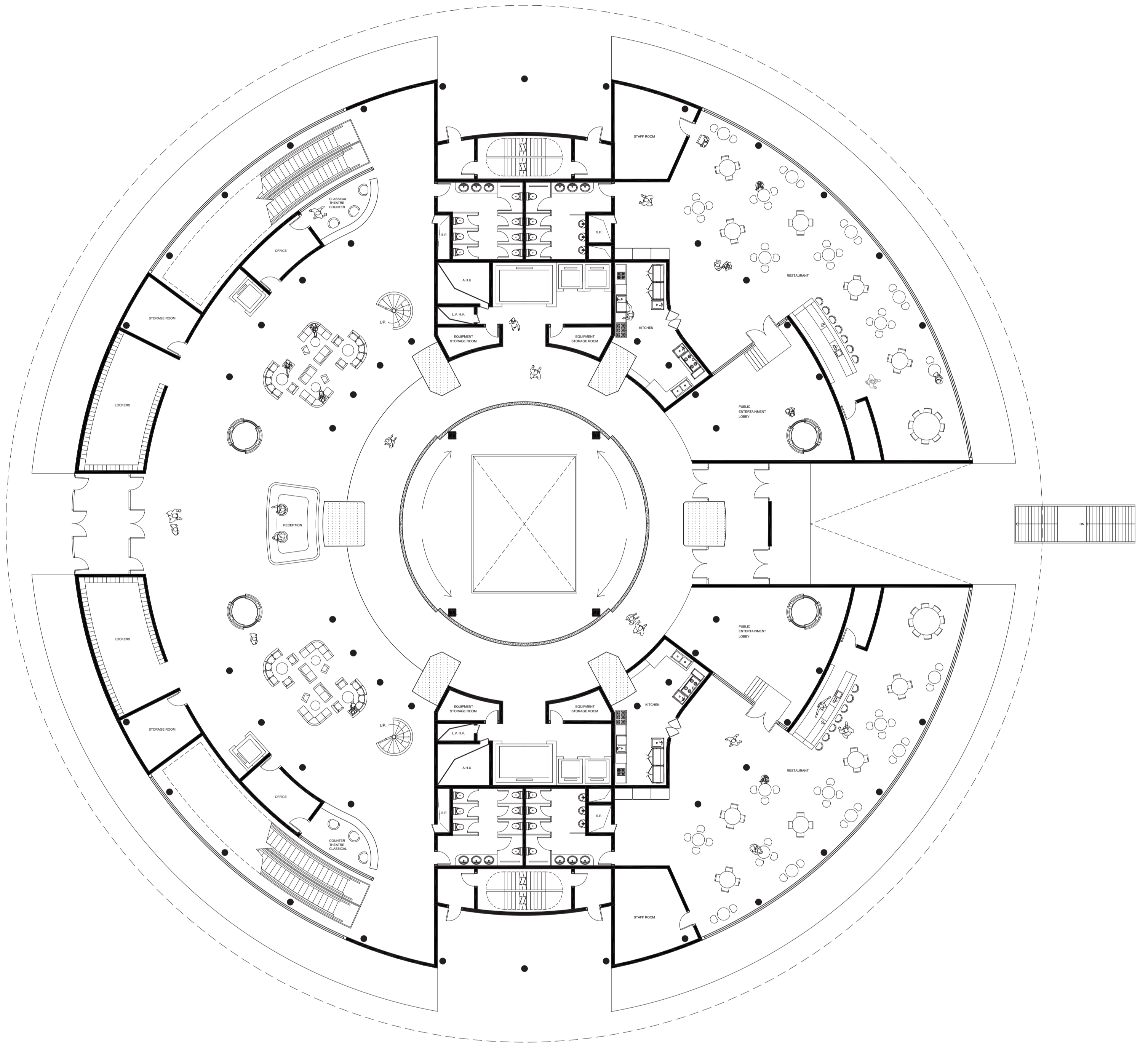
RELAXING ZONE 03

1 : 2 0 0



SCHIPHOL THEATRE

FLOOR PLAN



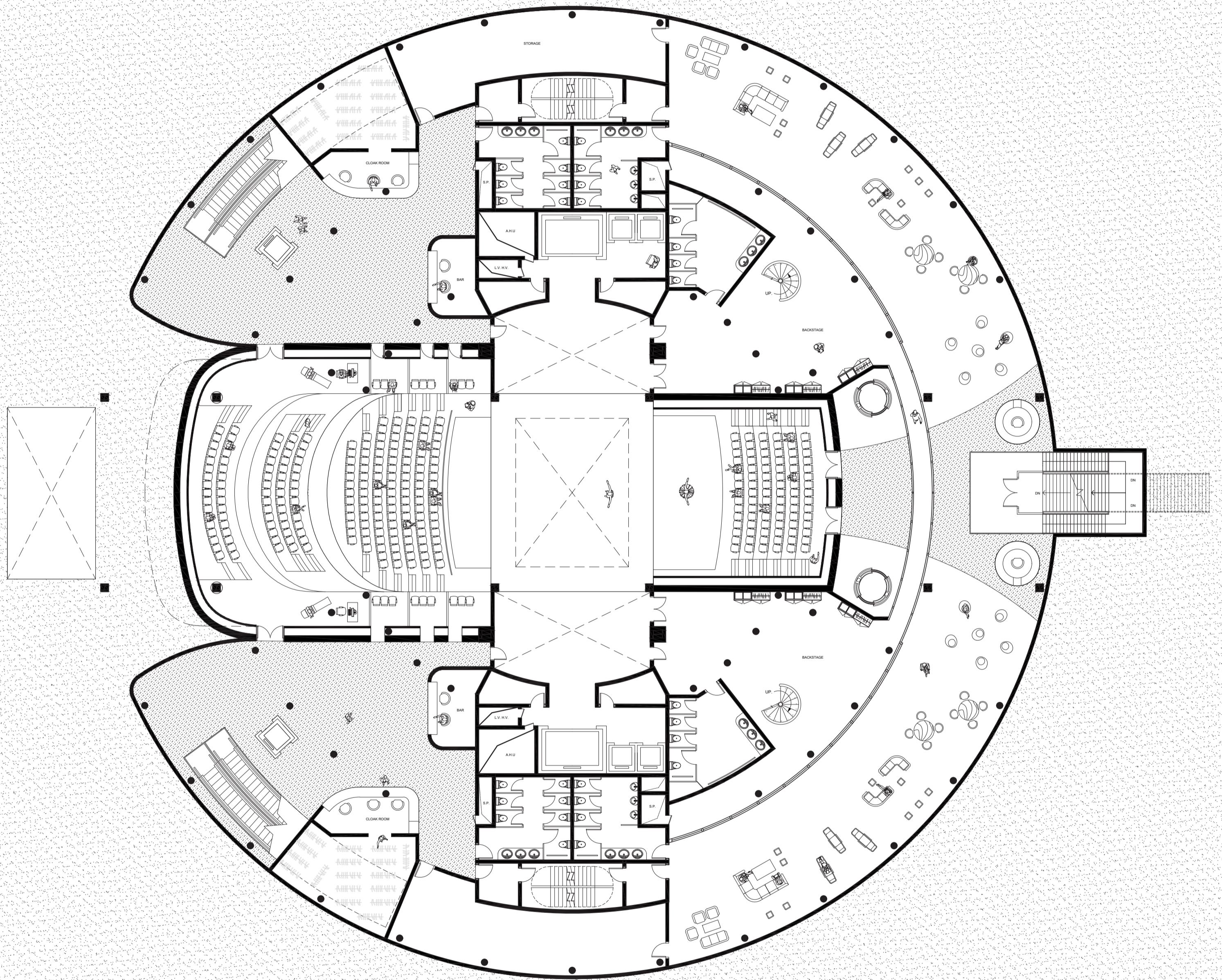
ENTRANCE FLOOR 00

1 : 2 0 0



SCHIPHOL THEATRE

FLOOR PLAN



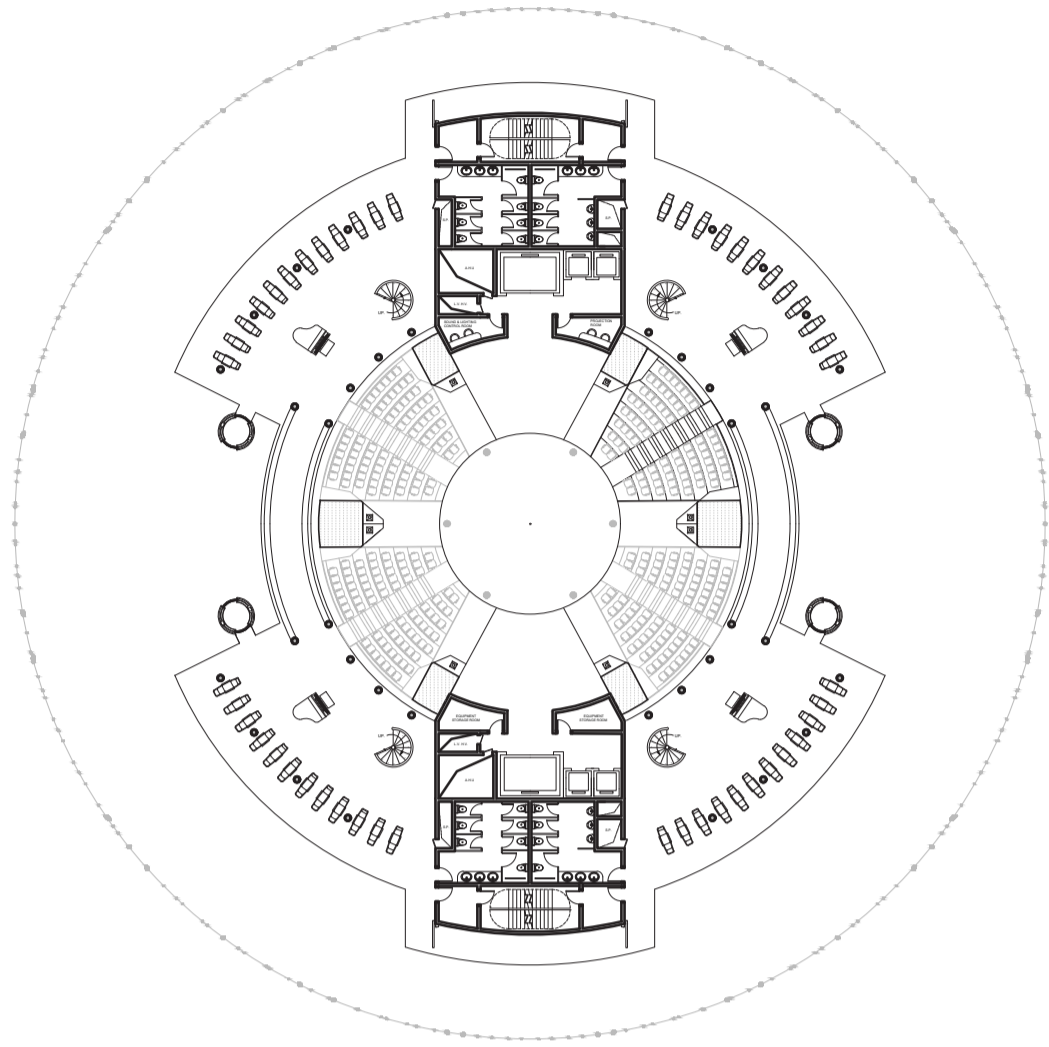
CLASSICAL PERFORMANCE - 01

1:200

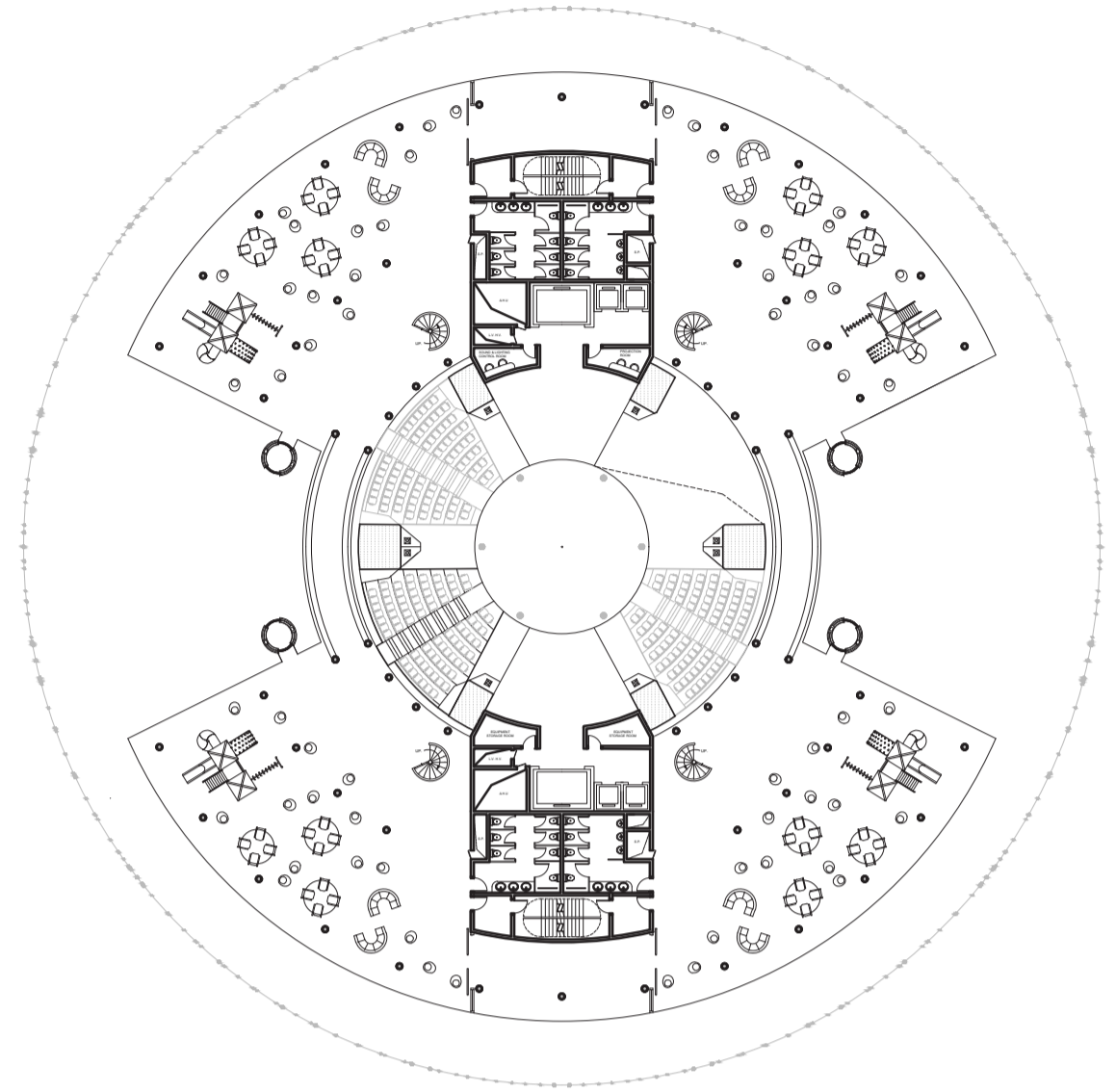


CHI HANG WONG | NO. 4614755
GRADUATION PROJECT | COMPLEX PROJECTS
SCHIPHOL TERMINAL
2018/2019

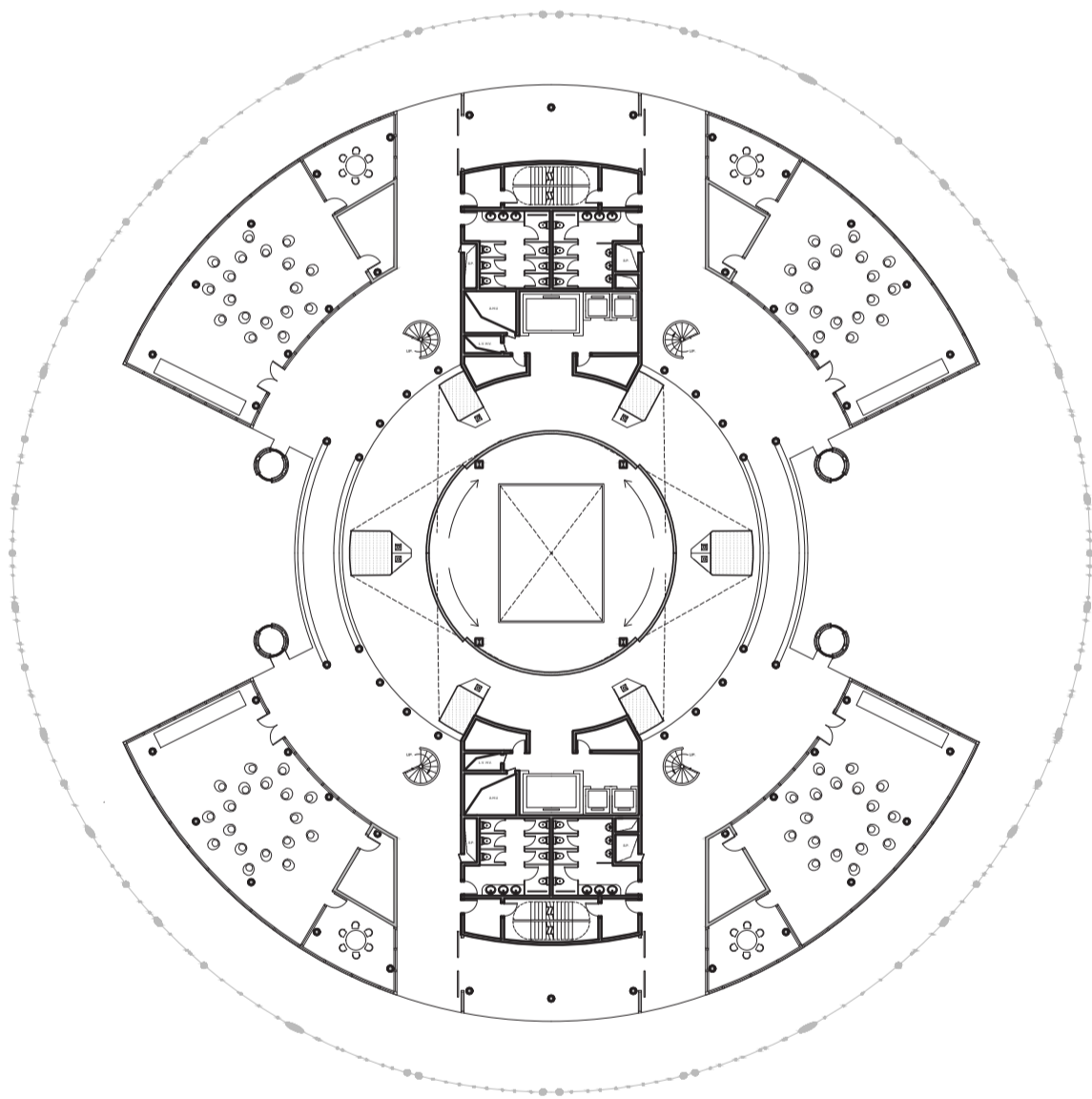
FLOOR PLANS



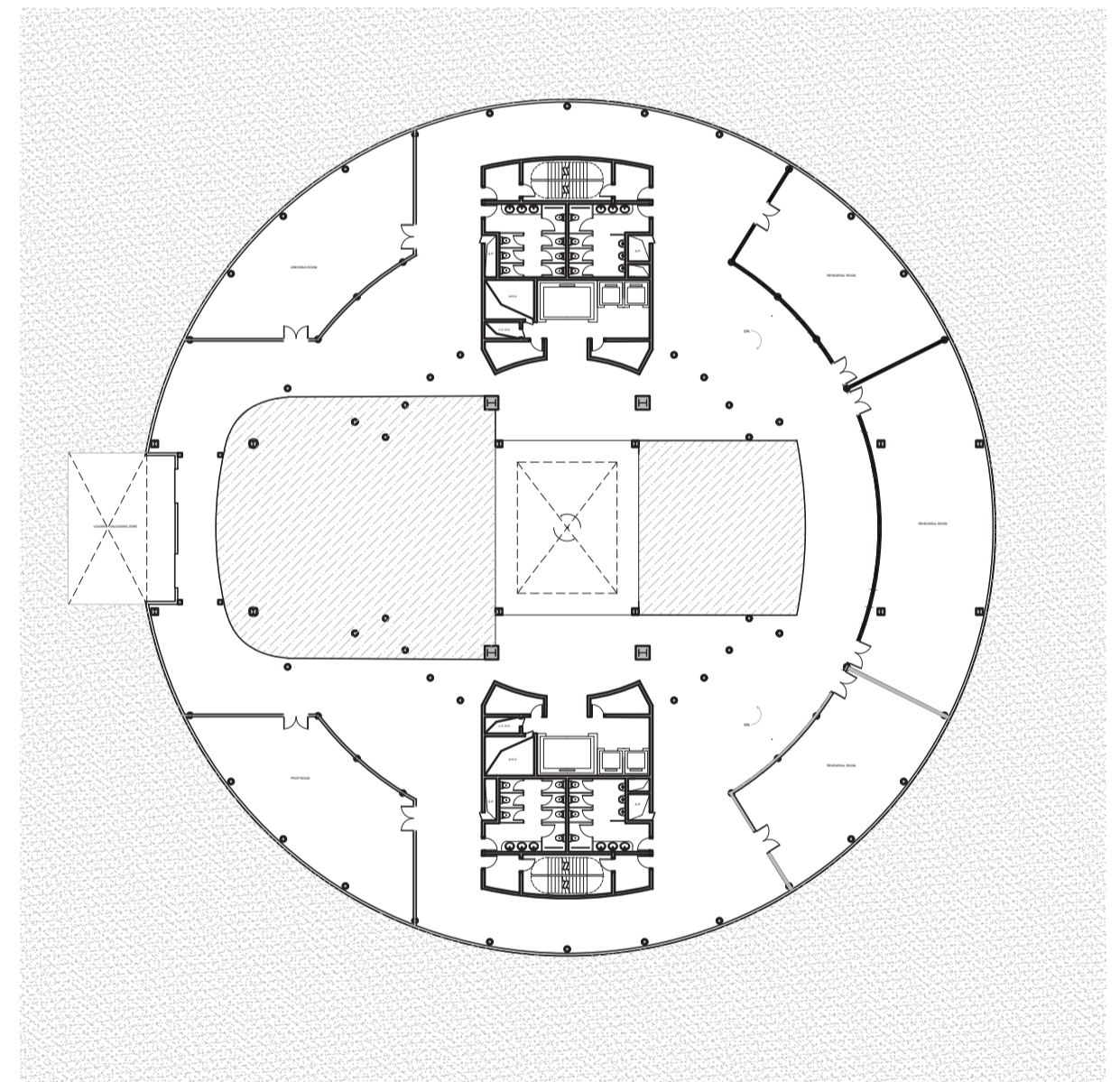
TOP LOUNGE 04



FAMILY LOUNGE 03

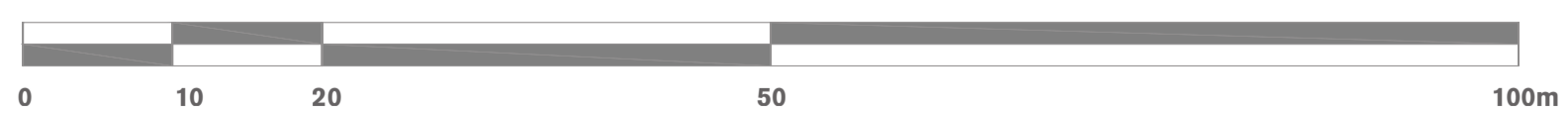


IMMERSIVE ZONE 02



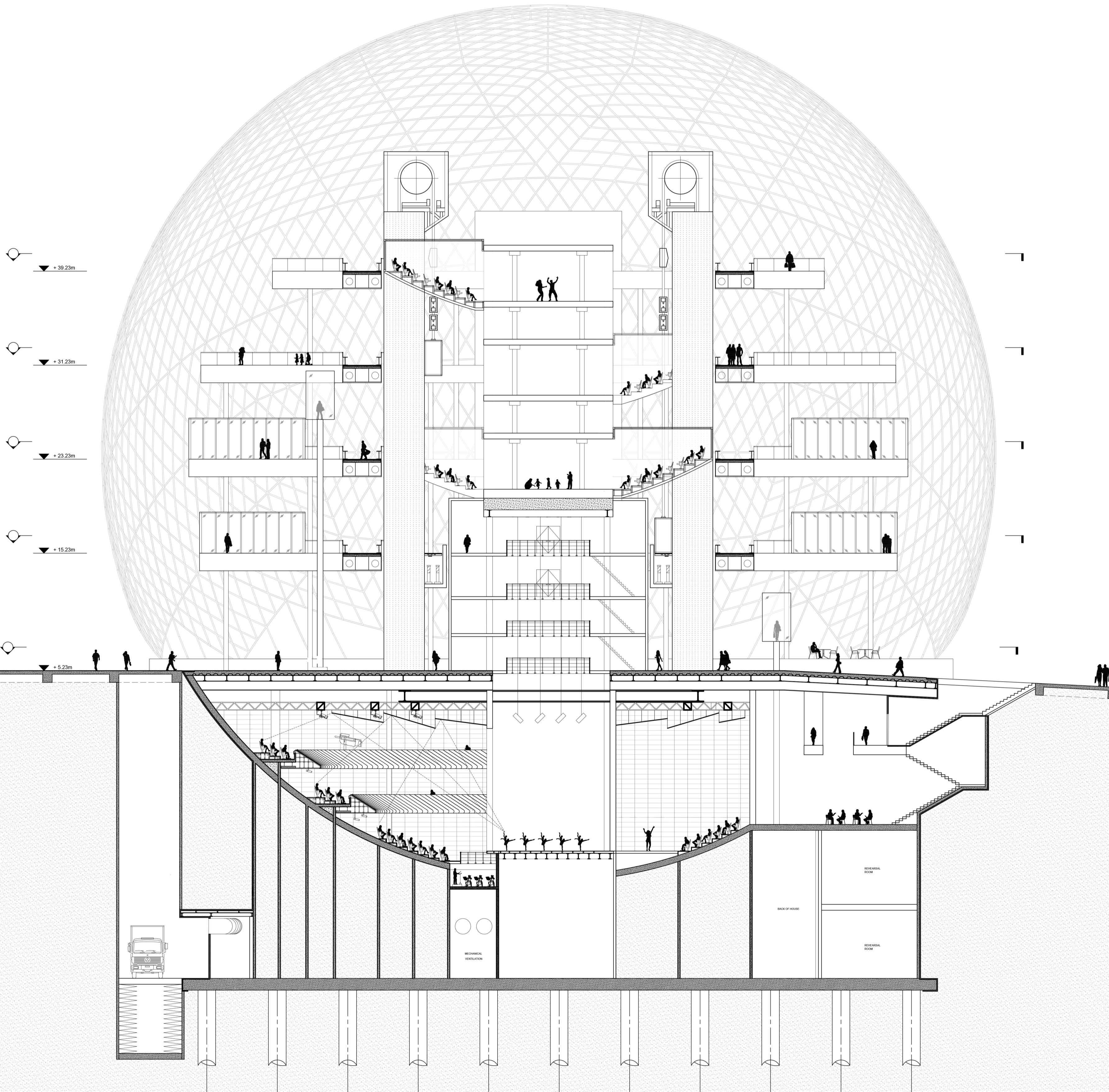
BACKSTAGE - 02

SCALE 1:500



SCHIPHOL THEATRE

SECTION



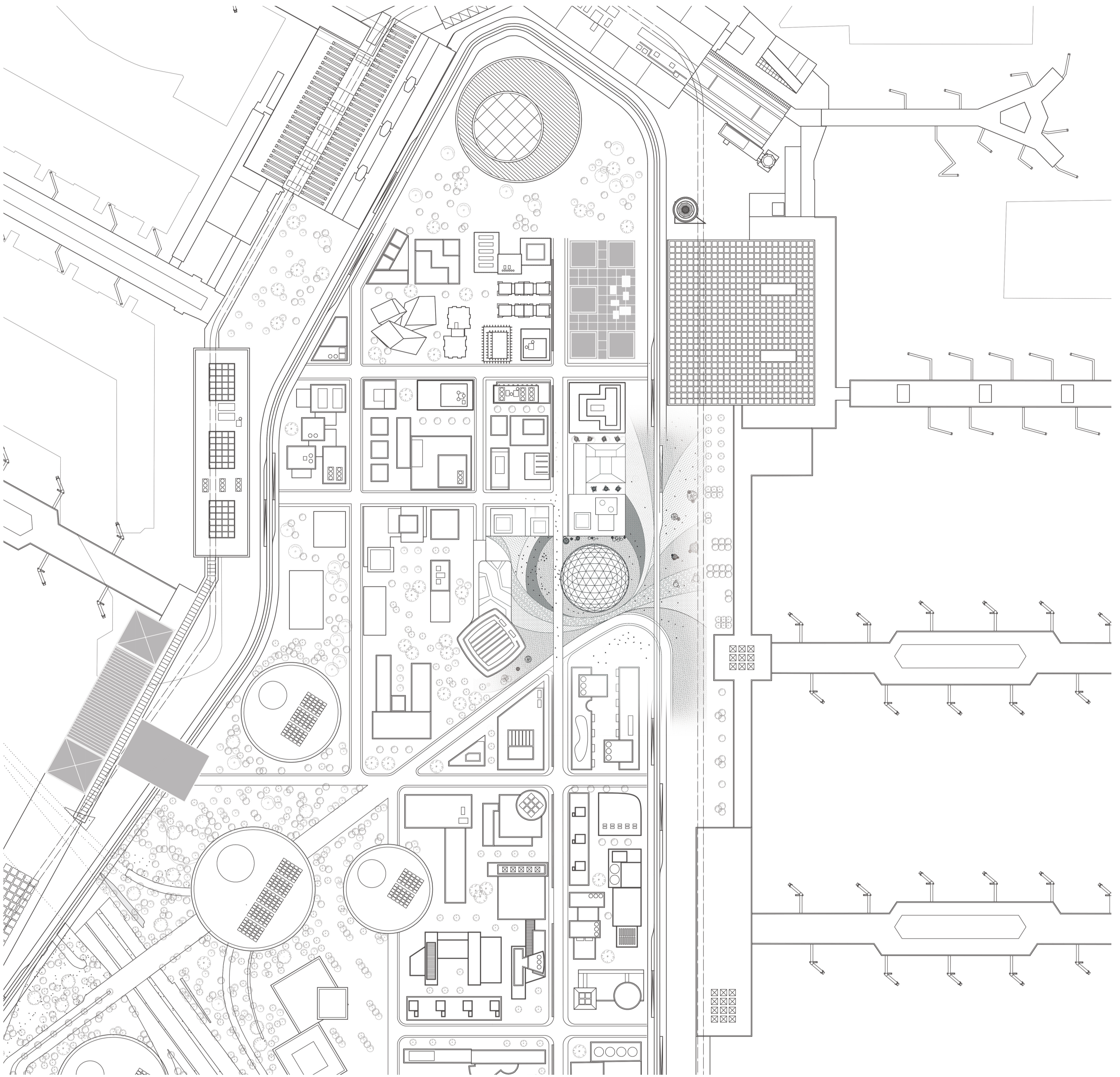
SCALE 1:200



CHI HANG WONG | NO. 4614755
GRADUATION PROJECT | COMPLEX PROJECTS
SCHIPHOL TERMINAL
2018/2019

SCHIPHOL THEATRE

LOCATION



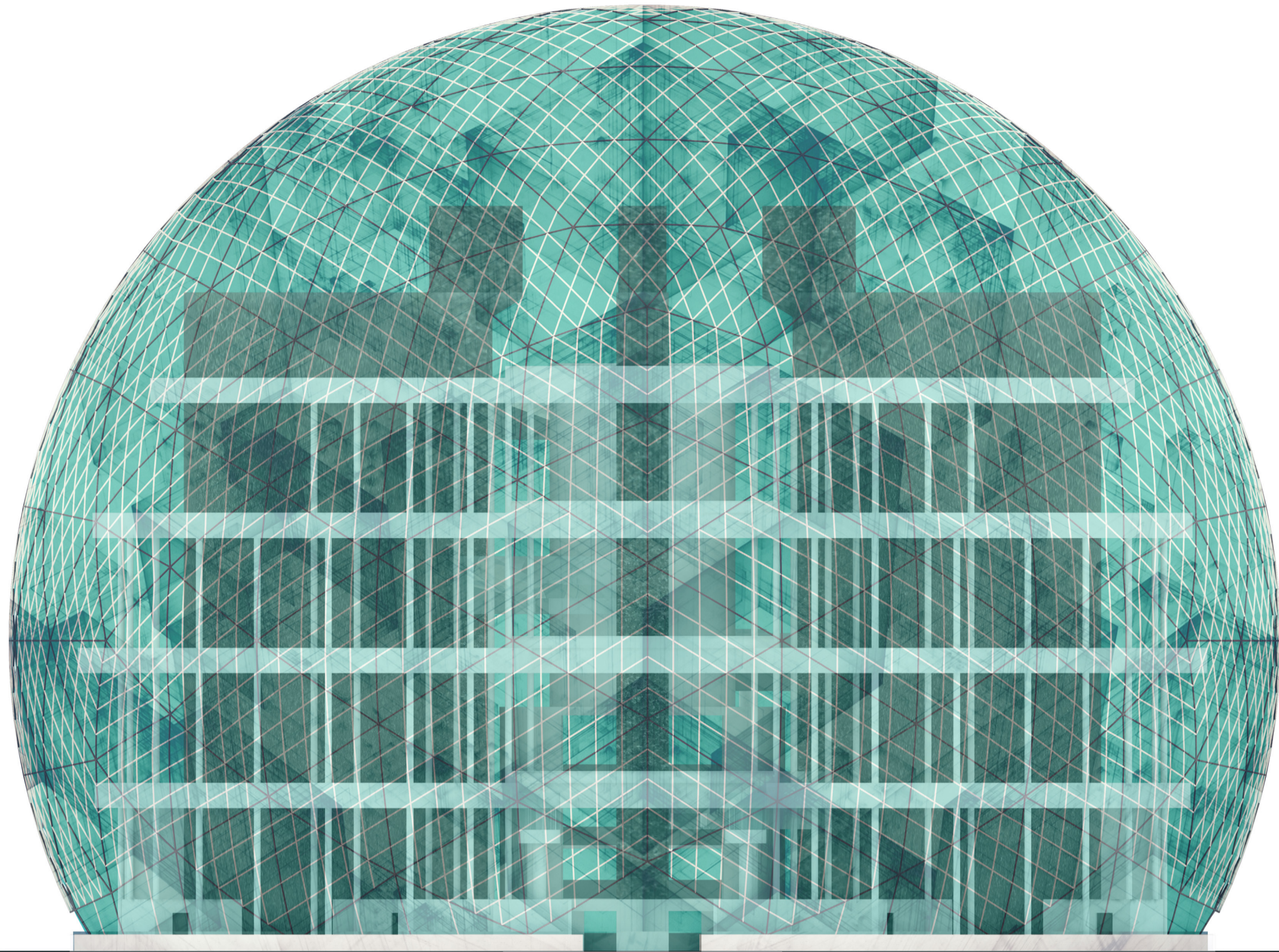
SCALE 1:2500



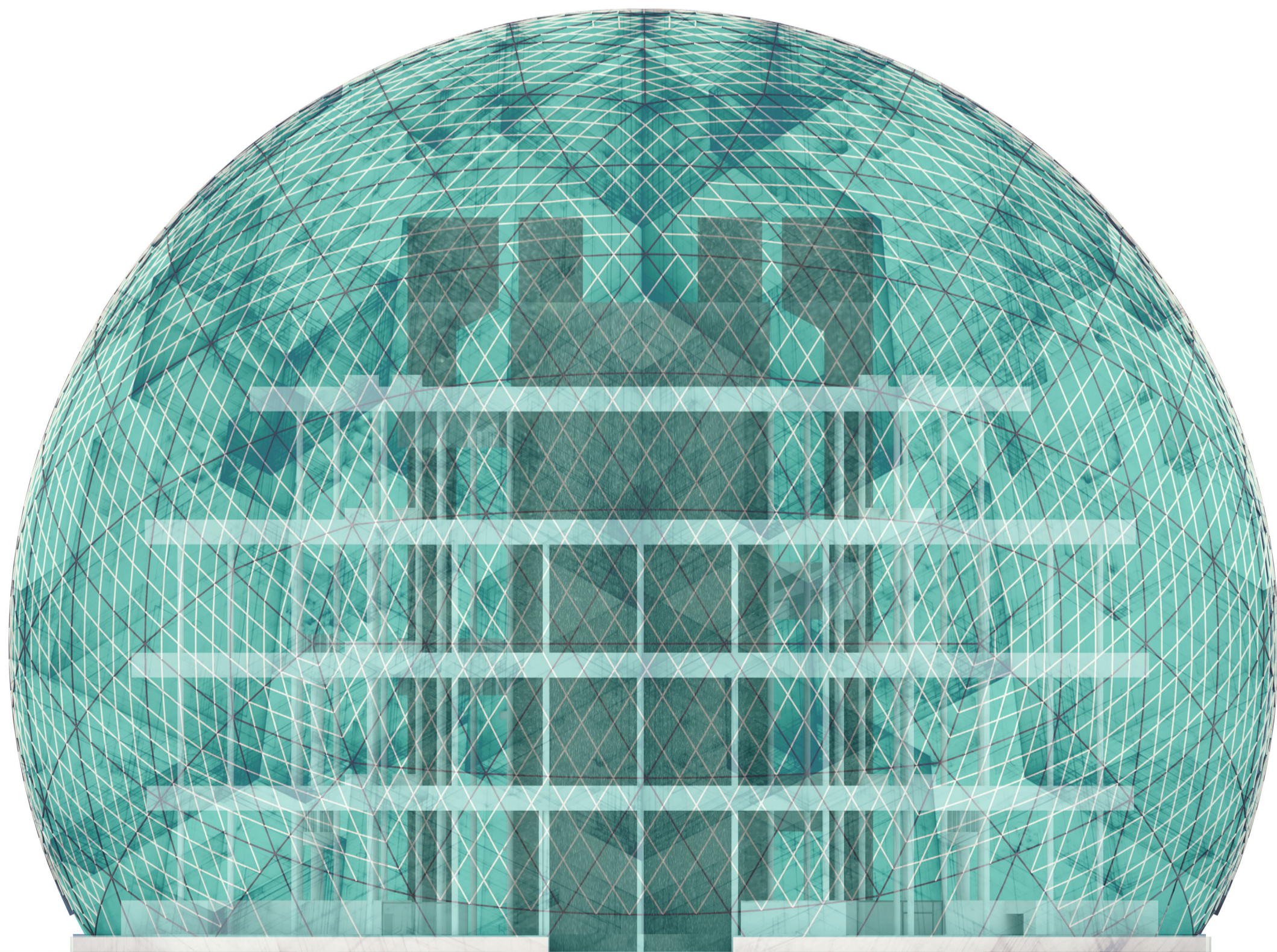
CHI HANG WONG | NO. 4614755
GRADUATION PROJECT | COMPLEX PROJECTS
SCHIPHOL TERMINAL
2018/2019

SCHIPHOL THEATRE

F A C A D E



FRONT ENTRANCE 1:250



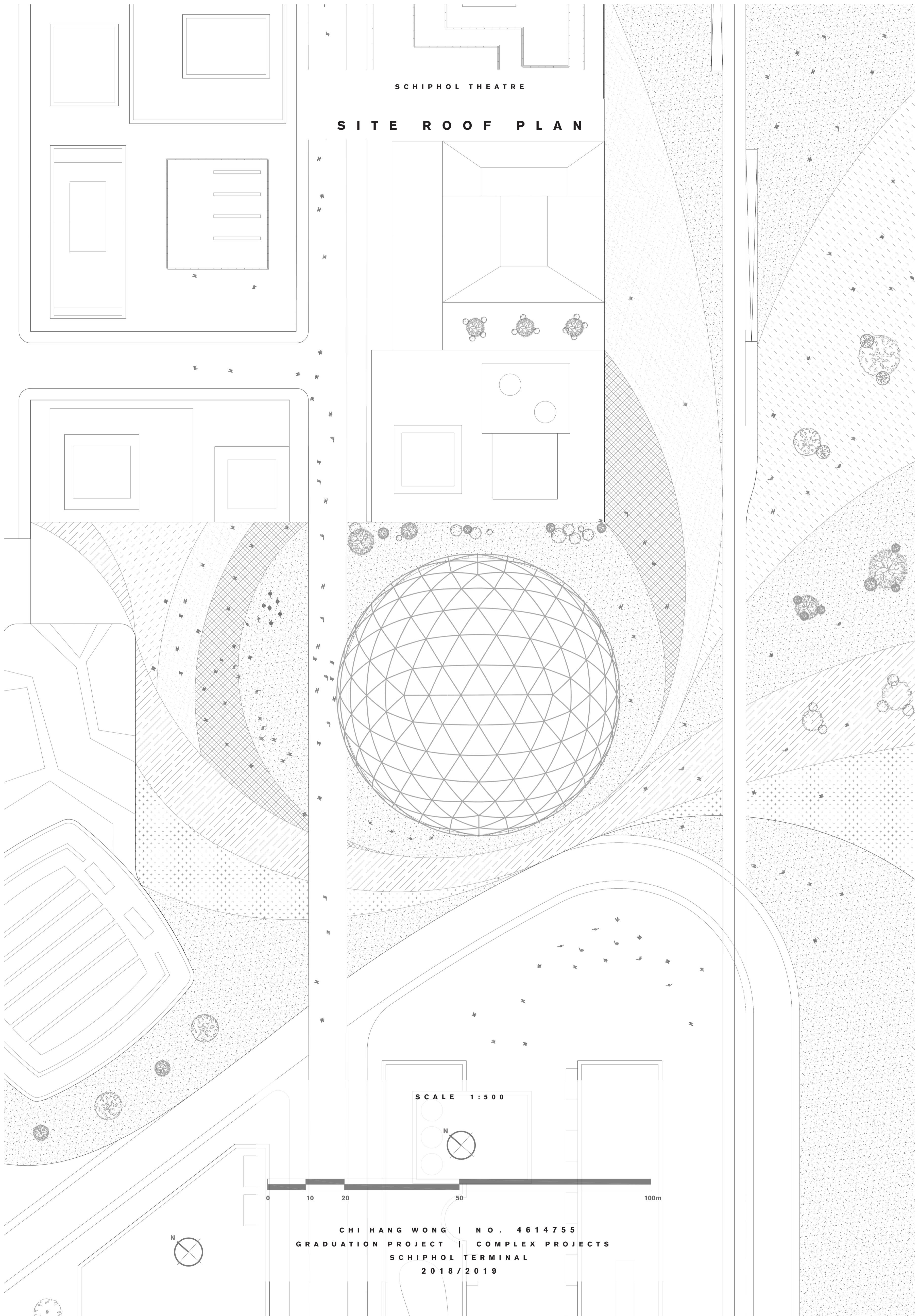
SIDE EXIT 1:250



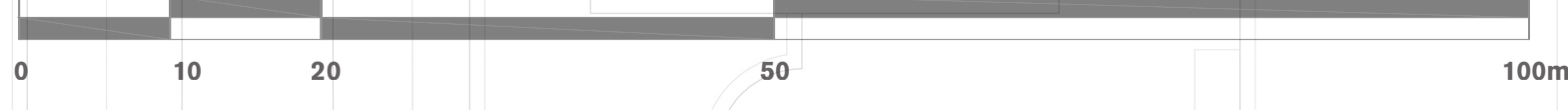
CHI HANG WONG | NO. 4614755
GRADUATION PROJECT | COMPLEX PROJECTS
SCHIPHOL TERMINAL
2018/2019

SCHIPHOL THEATRE

S I T E R O O F P L A N

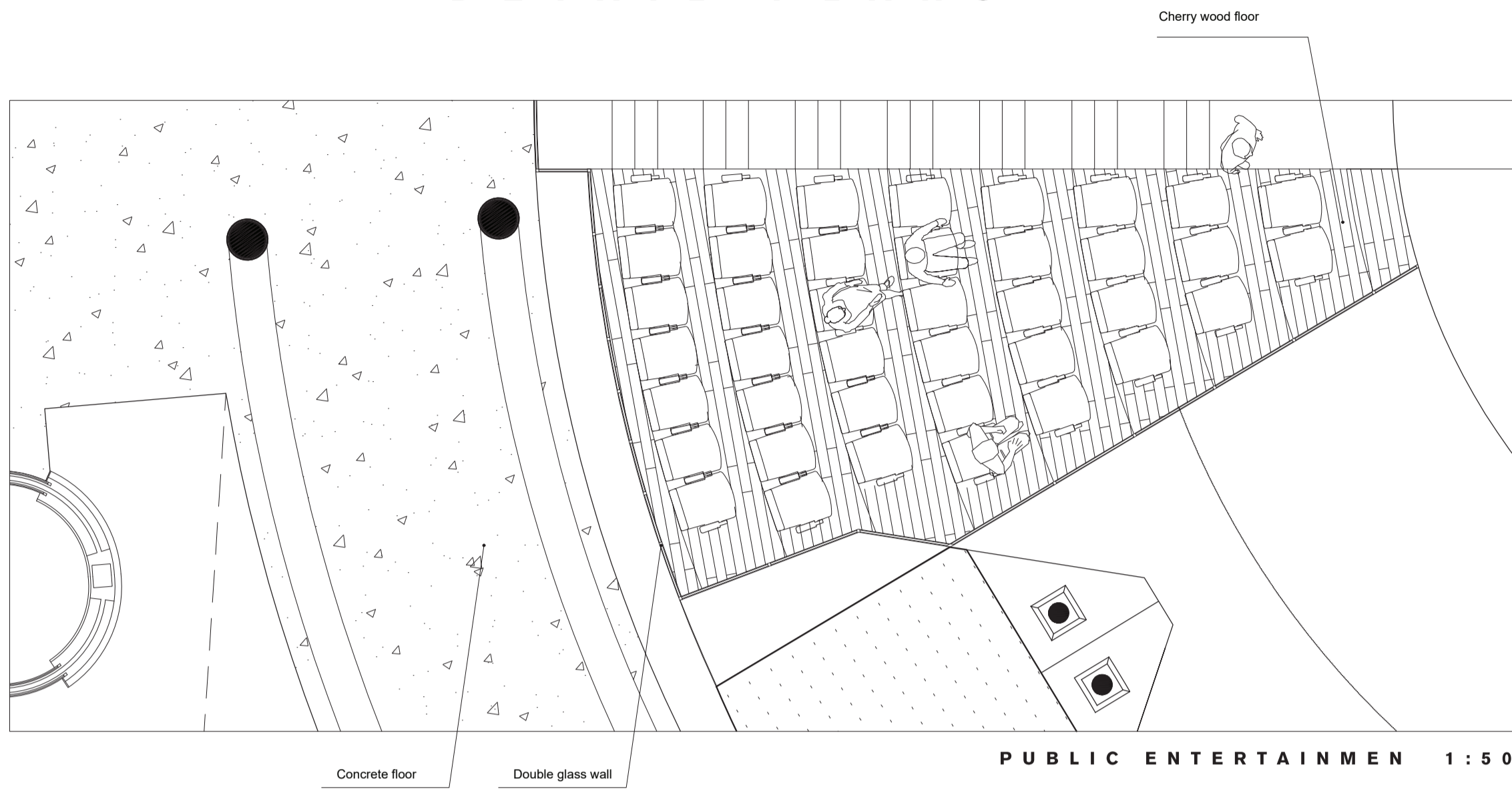


SCALE 1:500

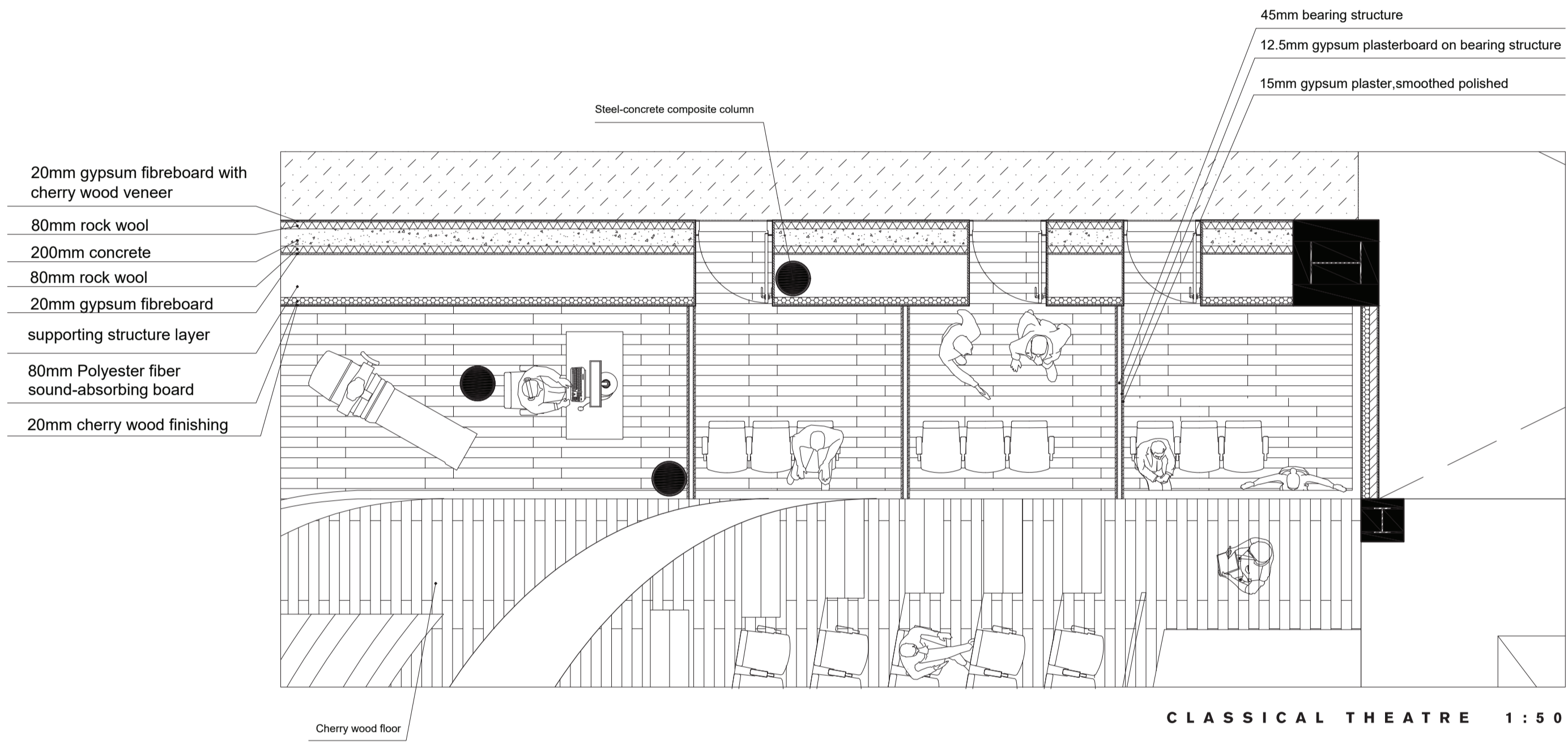


CHI HANG WONG | NO. 4614755
GRADUATION PROJECT | COMPLEX PROJECTS
SCHIPHOL TERMINAL
2018/2019

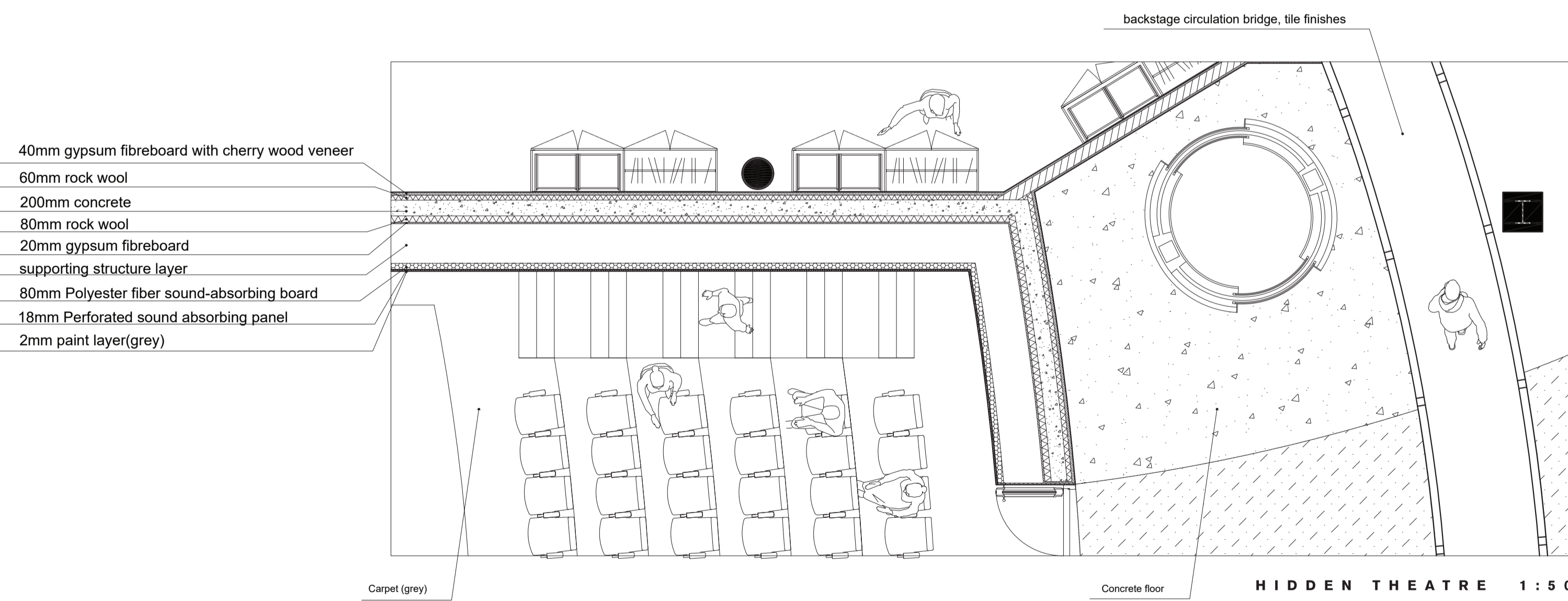
DETAIL PLANS



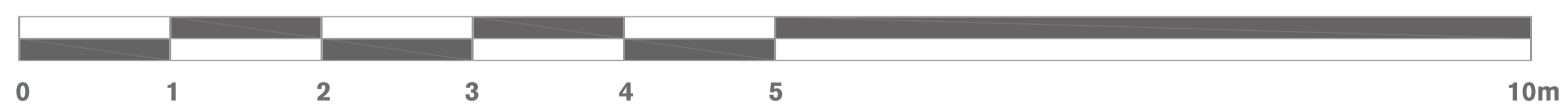
PUBLIC ENTERTAINMENT 1:50



CLASSICAL THEATRE 1:50

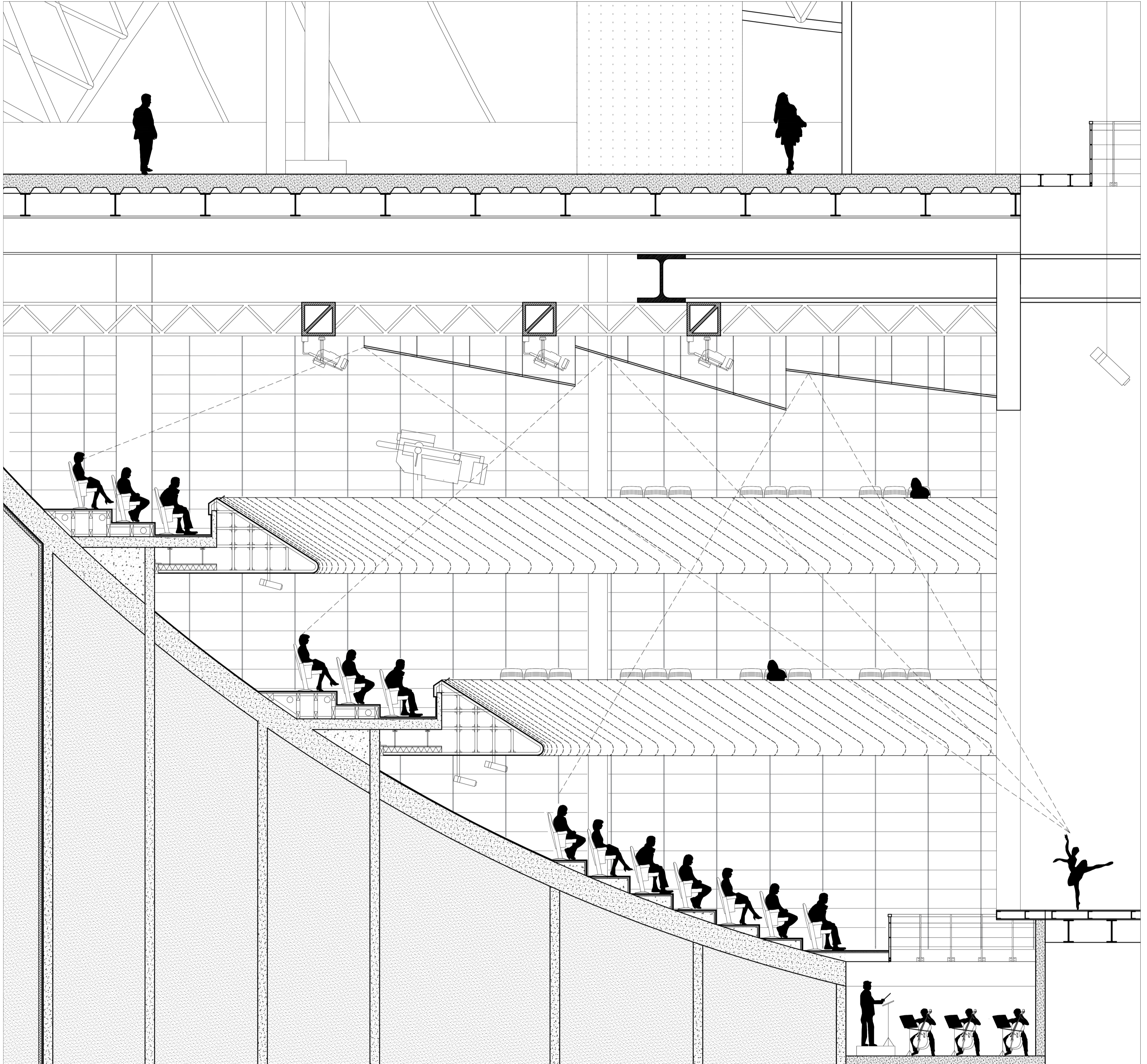


HIDDEN THEATRE 1:50

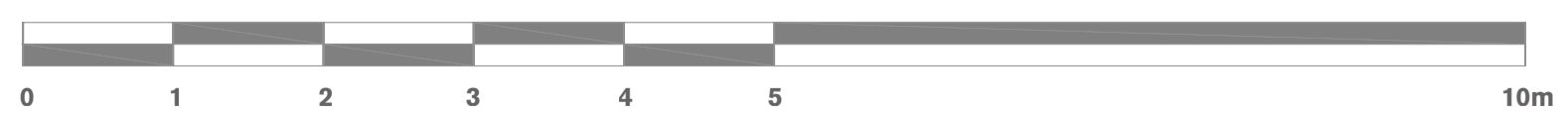


SCHIPHOL THEATRE

DETAIL SECTION

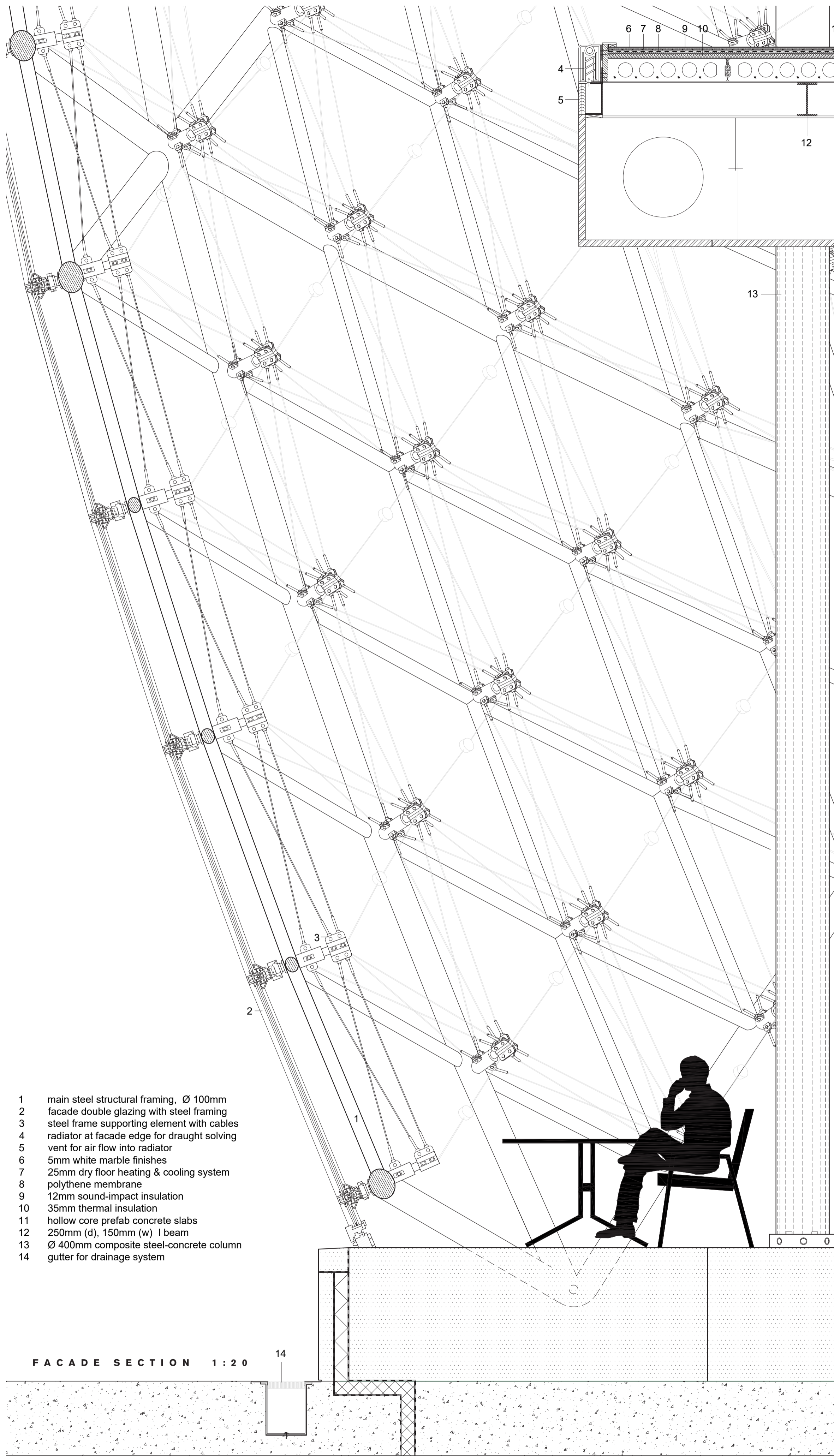


CLASSICAL THEATRE - AUDITORIUM 1:50



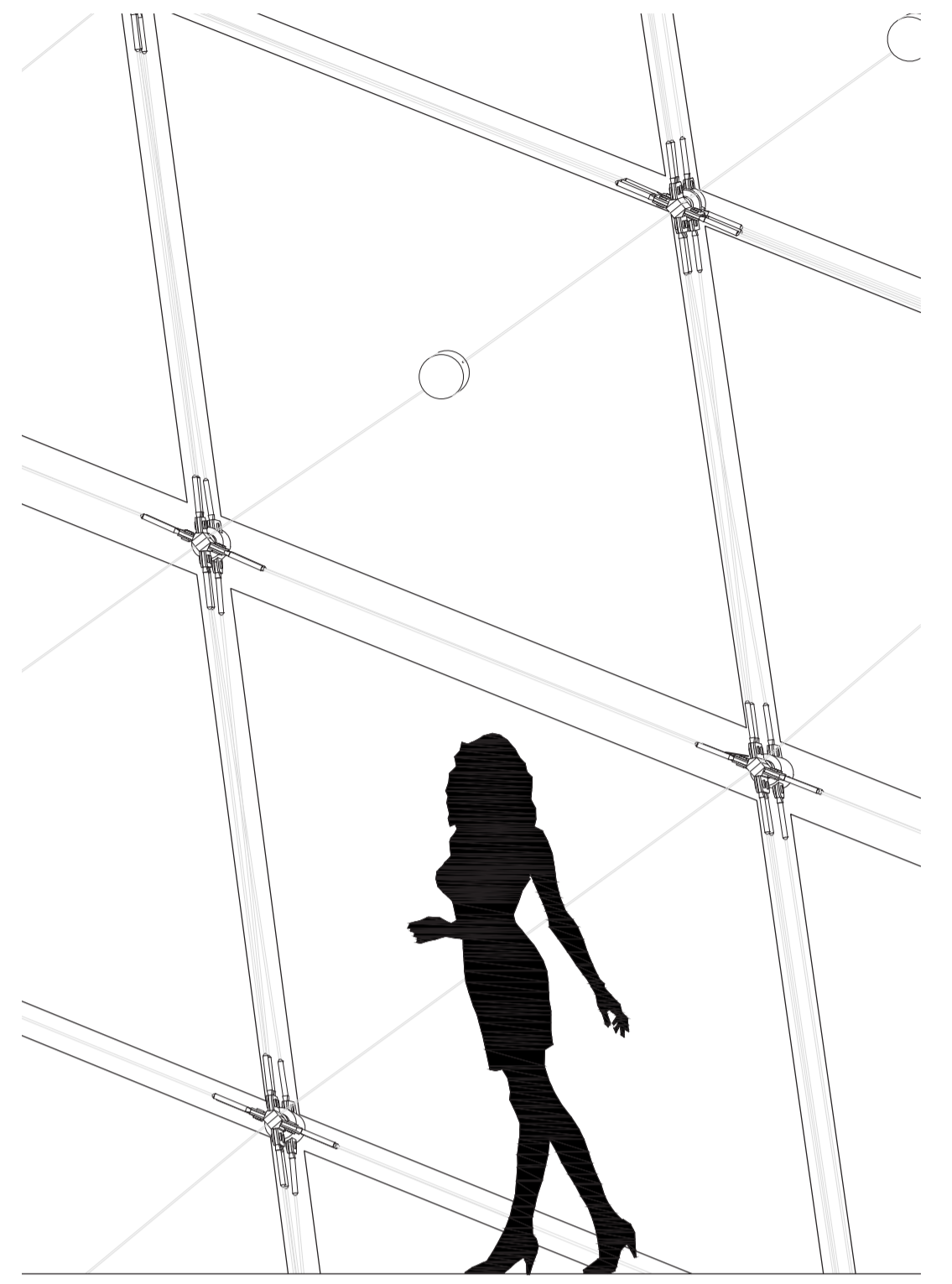
CHI HANG WONG | NO. 4614755
GRADUATION PROJECT | COMPLEX PROJECTS
SCHIPHOL TERMINAL
2018/2019

FACADE DETAILS

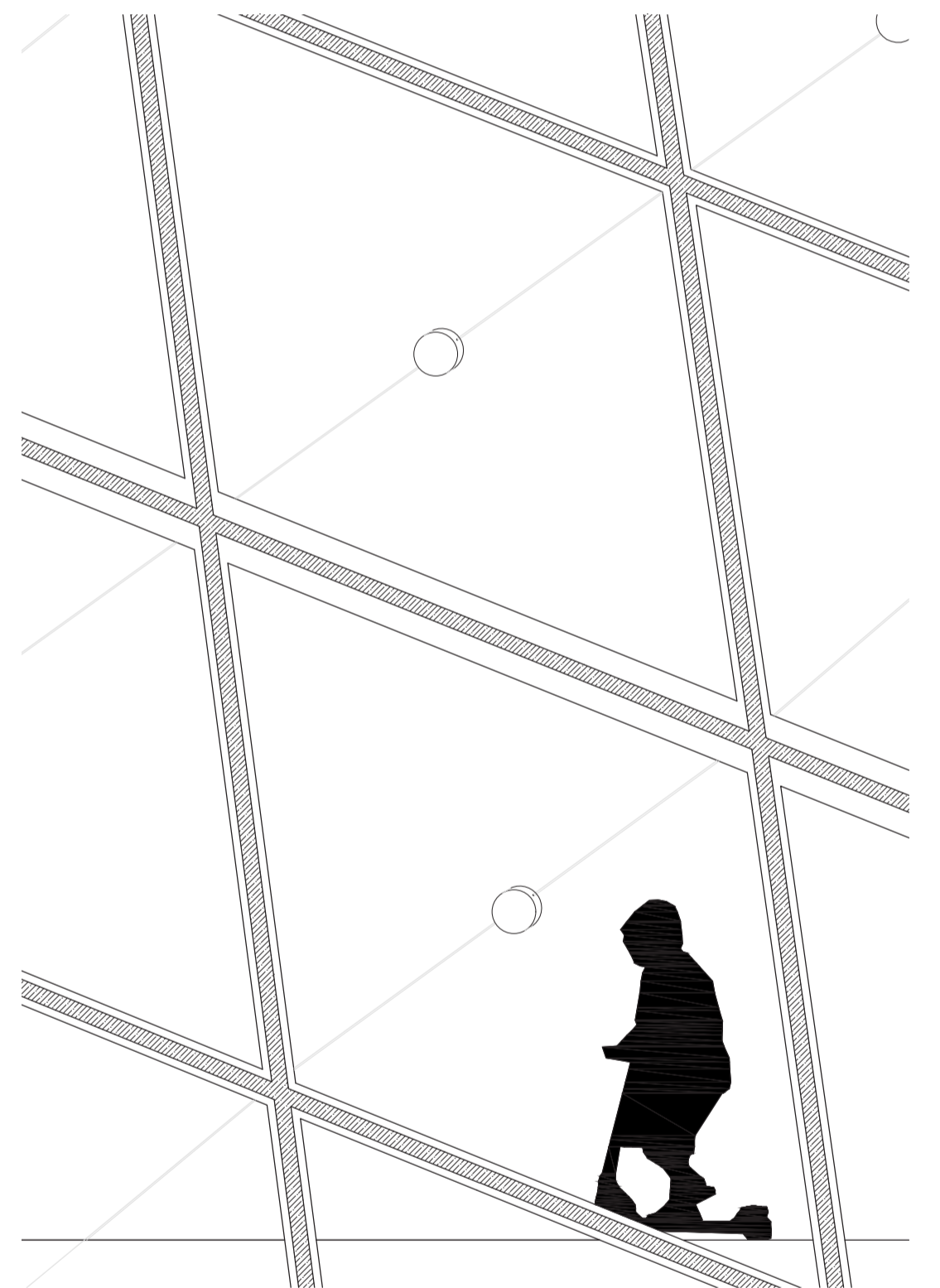


- 1 main steel structural framing, Ø 100mm
- 2 facade double glazing with steel framing
- 3 steel frame supporting element with cables
- 4 radiator at facade edge for draught solving
- 5 vent for air flow into radiator
- 6 5mm white marble finishes
- 7 25mm dry floor heating & cooling system
- 8 polythene membrane
- 9 12mm sound-impact insulation
- 10 35mm thermal insulation
- 11 hollow core prefab concrete slabs
- 12 250mm (d), 150mm (w) I beam
- 13 Ø 400mm composite steel-concrete column
- 14 gutter for drainage system

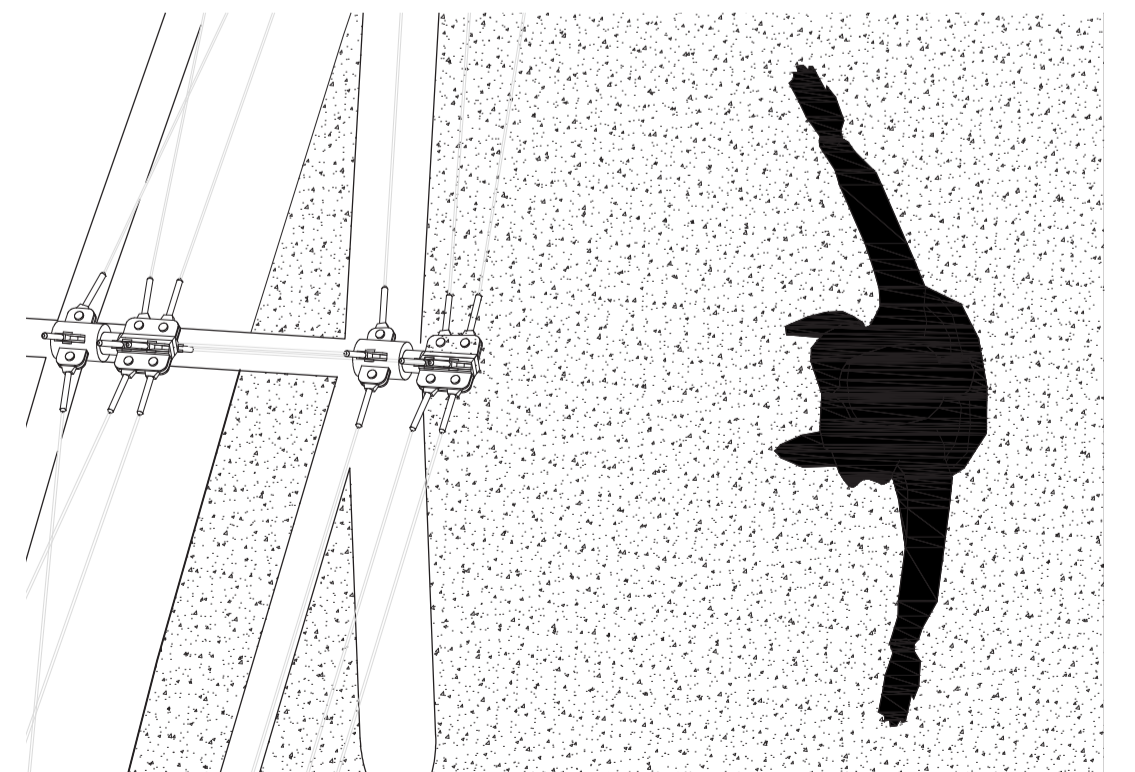
FACADE SECTION 1:20



INTERIOR ELEVATION 1:20

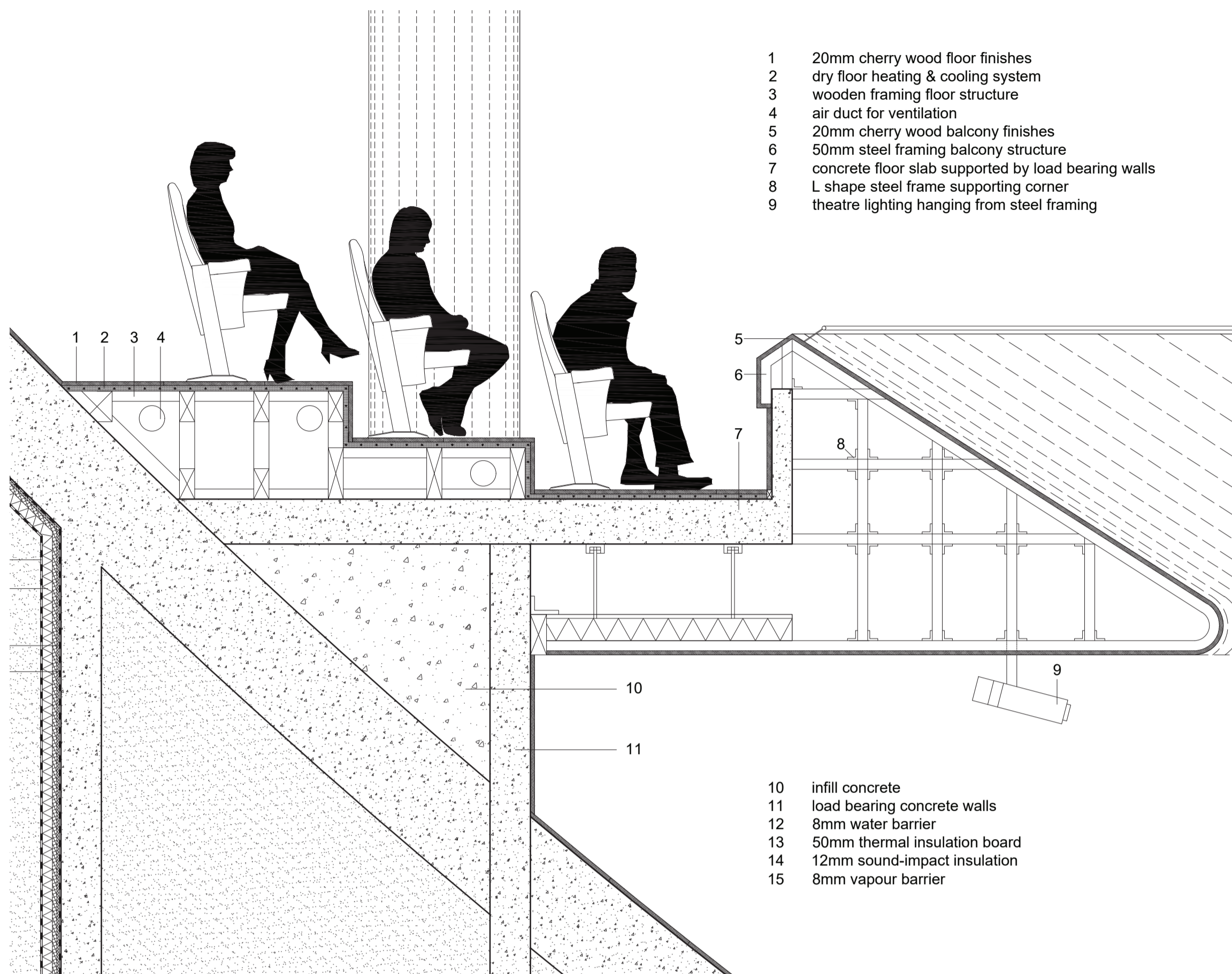


EXTERIOR ELEVATION 1:20



PLAN VIEW 1:20

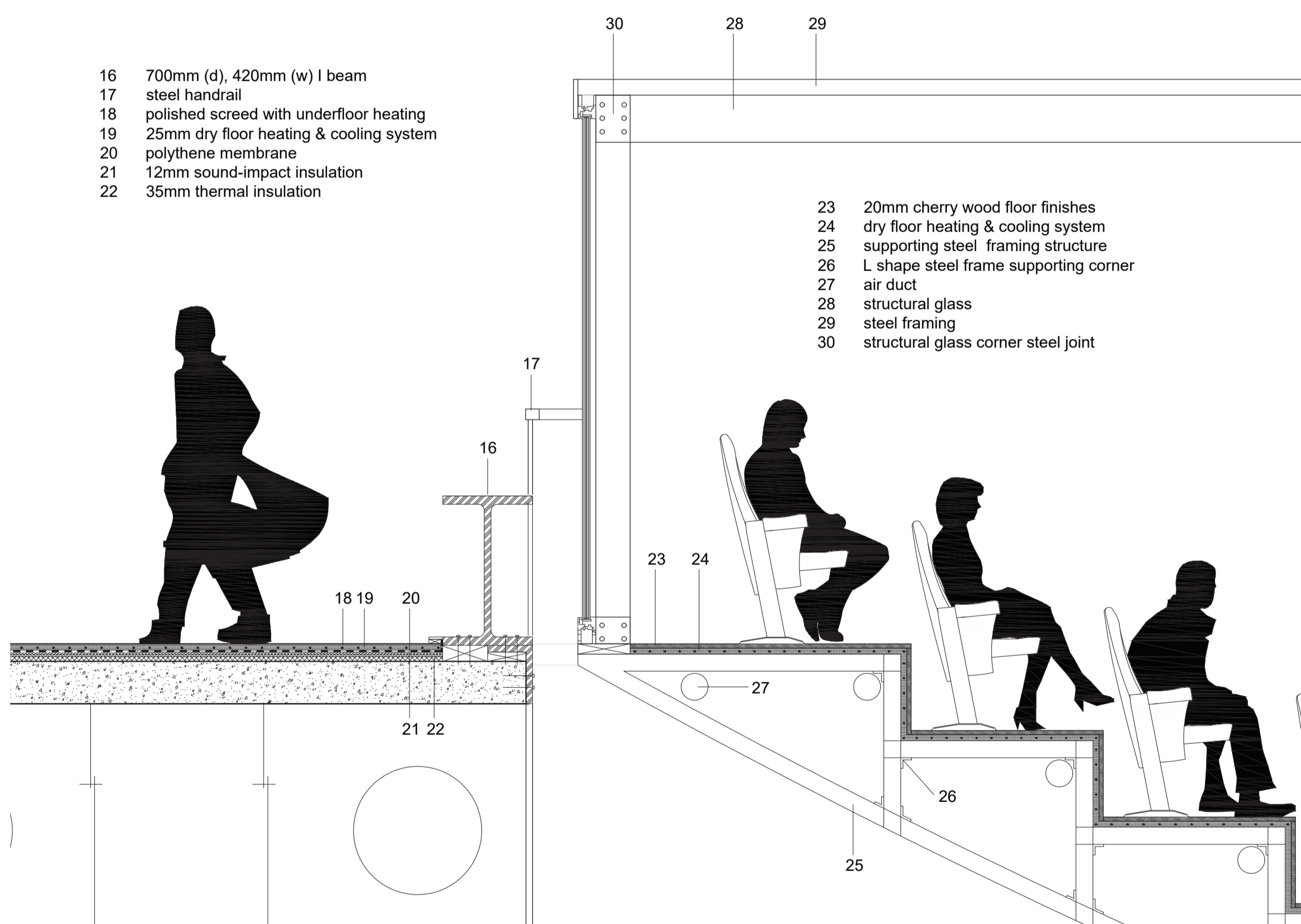
AUDITORIUM DETAILS



- 1 20mm cherry wood floor finishes
- 2 dry floor heating & cooling system
- 3 wooden framing floor structure
- 4 air duct for ventilation
- 5 20mm cherry wood balcony finishes
- 6 50mm steel framing balcony structure
- 7 concrete floor slab supported by load bearing walls
- 8 L shape steel frame supporting corner
- 9 theatre lighting hanging from steel framing

- 10 infill concrete
- 11 load bearing concrete walls
- 12 8mm water barrier
- 13 50mm thermal insulation board
- 14 12mm sound-impact insulation
- 15 8mm vapour barrier

CLASSICAL THEATRE - BALCONY DETAIL 1:20



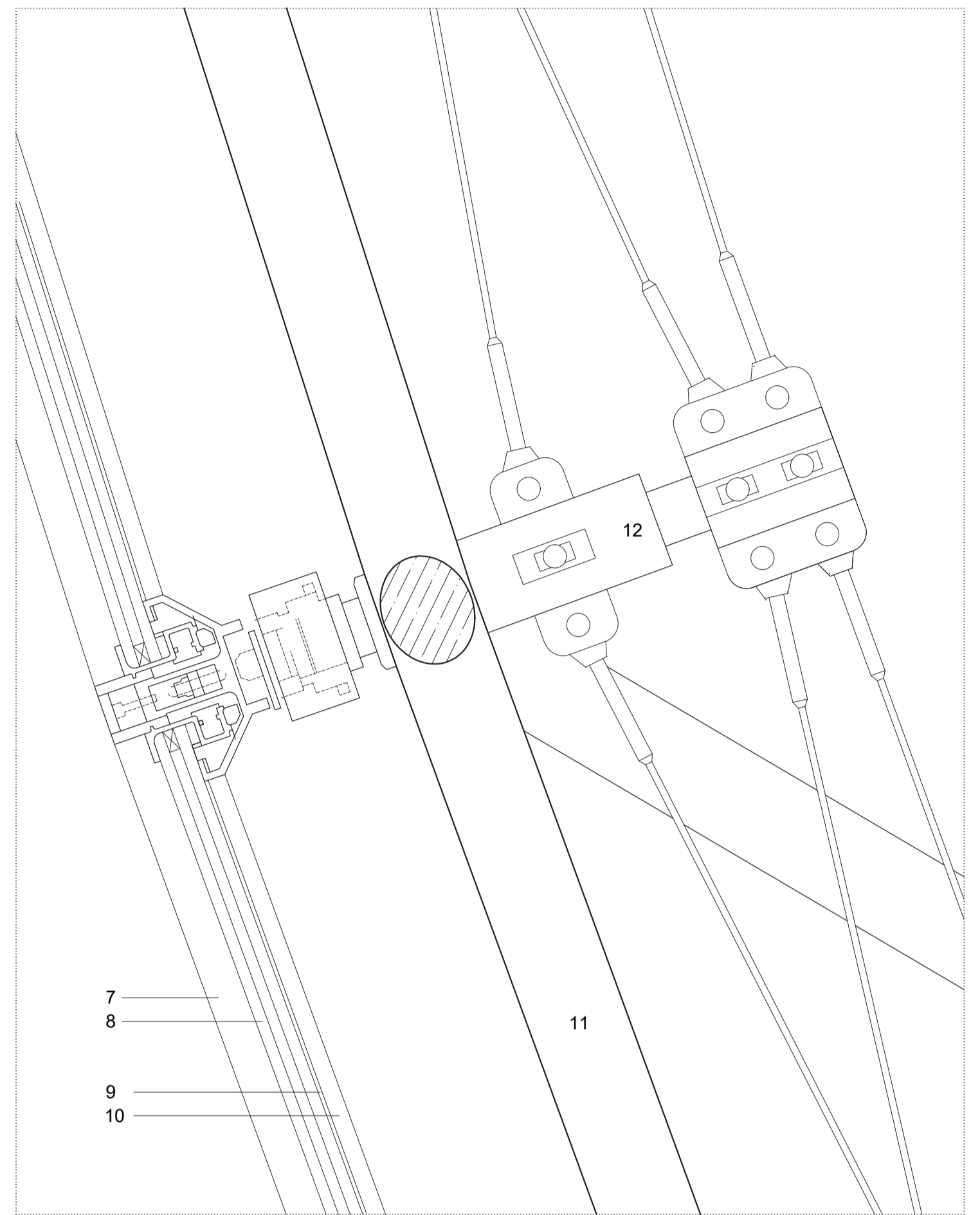
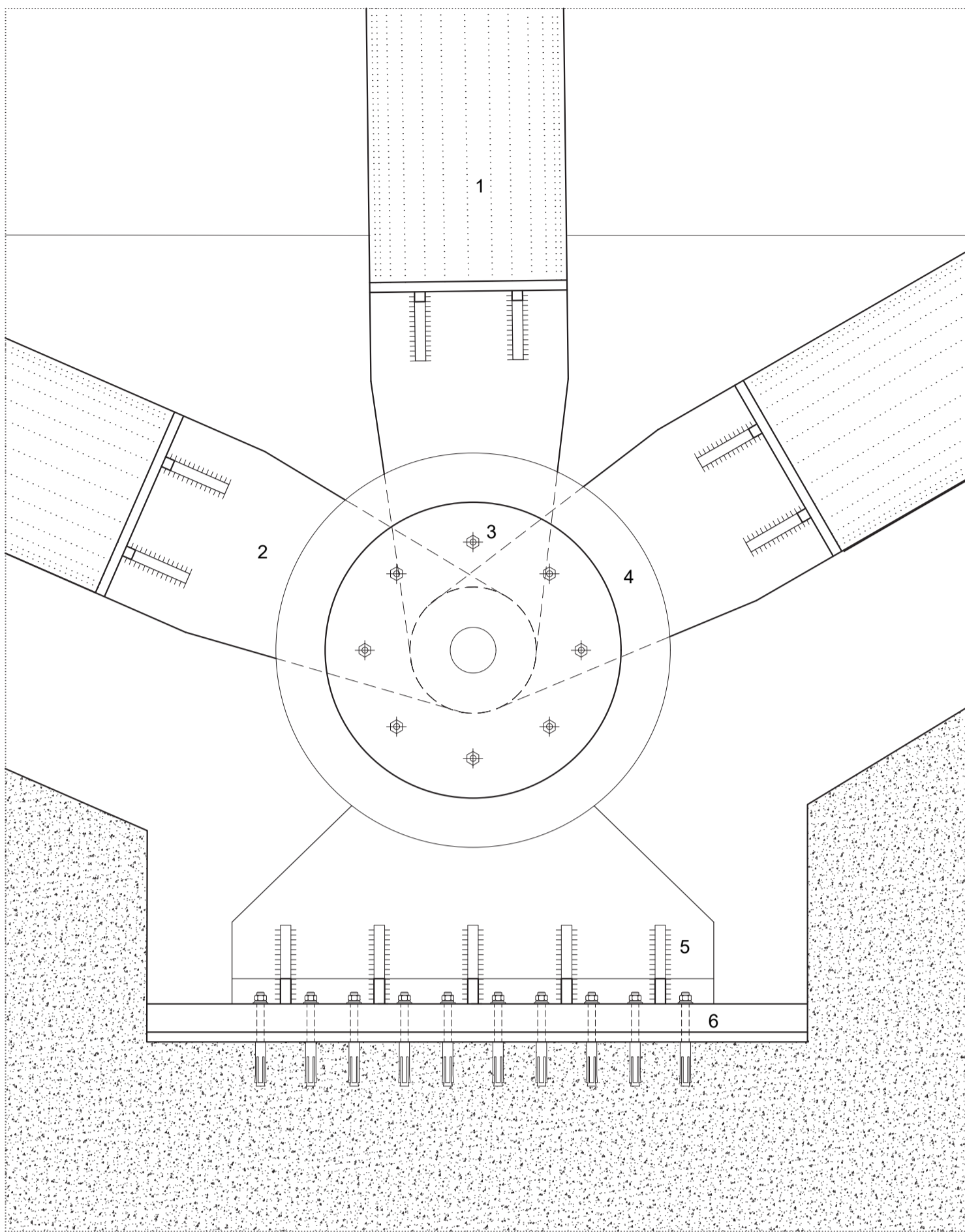
- 16 700mm (d), 420mm (w) I beam
- 17 steel handrail
- 18 polished screed with underfloor heating
- 19 25mm dry floor heating & cooling system
- 20 polythene membrane
- 21 12mm sound-impact insulation
- 22 35mm thermal insulation

- 23 20mm cherry wood floor finishes
- 24 dry floor heating & cooling system
- 25 supporting steel framing structure
- 26 L shape steel frame supporting corner
- 27 air duct
- 28 structural glass
- 29 steel framing
- 30 structural glass corner steel joint

PUBLIC ENTERTAINMENT - AUDITORIUM DETAIL 1:20



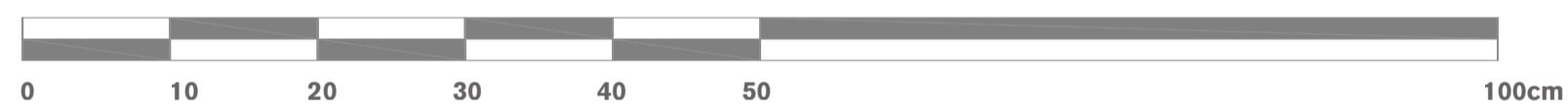
JOINT DETAILS



- 1 main steel structural framing, Ø 200mm
- 2 10 mm thick steel connection joint to framing merging point
- 3 nailing of main merging point circular steel plates
- 4 20mm merging point circular steel plate
- 5 welding of steel structural support to horizontal steel plate
- 6 nailing of horizontal steel plate to concrete platform

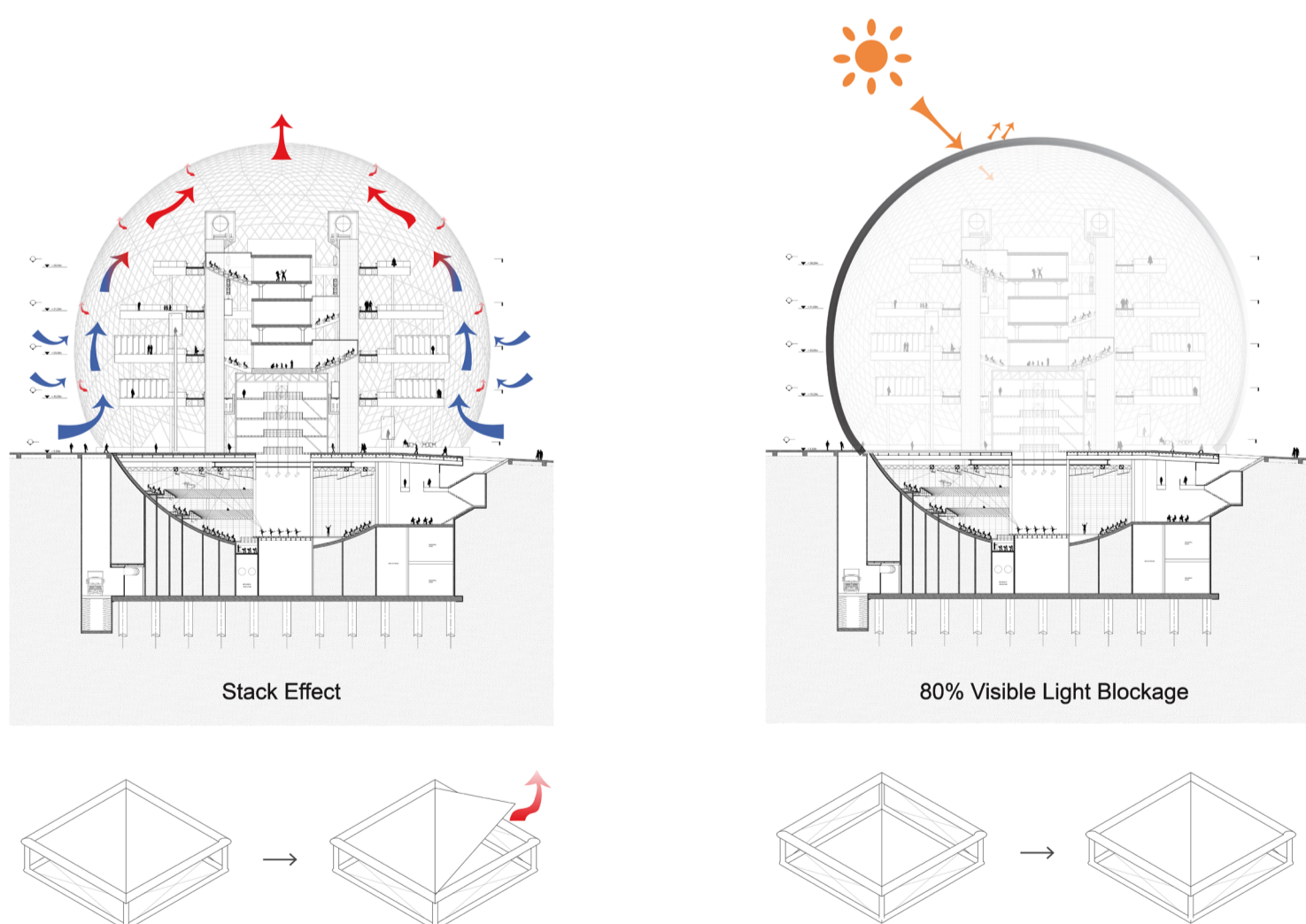
- 7 38mm main glazing steel framing
- 8 double glazing with cavity layer in between
- 9 4mm ion storage layer for electrochromic glass effect
- 10 secondary steel framing for glazing
- 11 Ø 100mm sub framing for facade
- 12 facade steel framing structure supporting element with cables

SCALE 1 : 5



CLIMATIC PRINCIPLES

Summer Condition



Winter Condition

