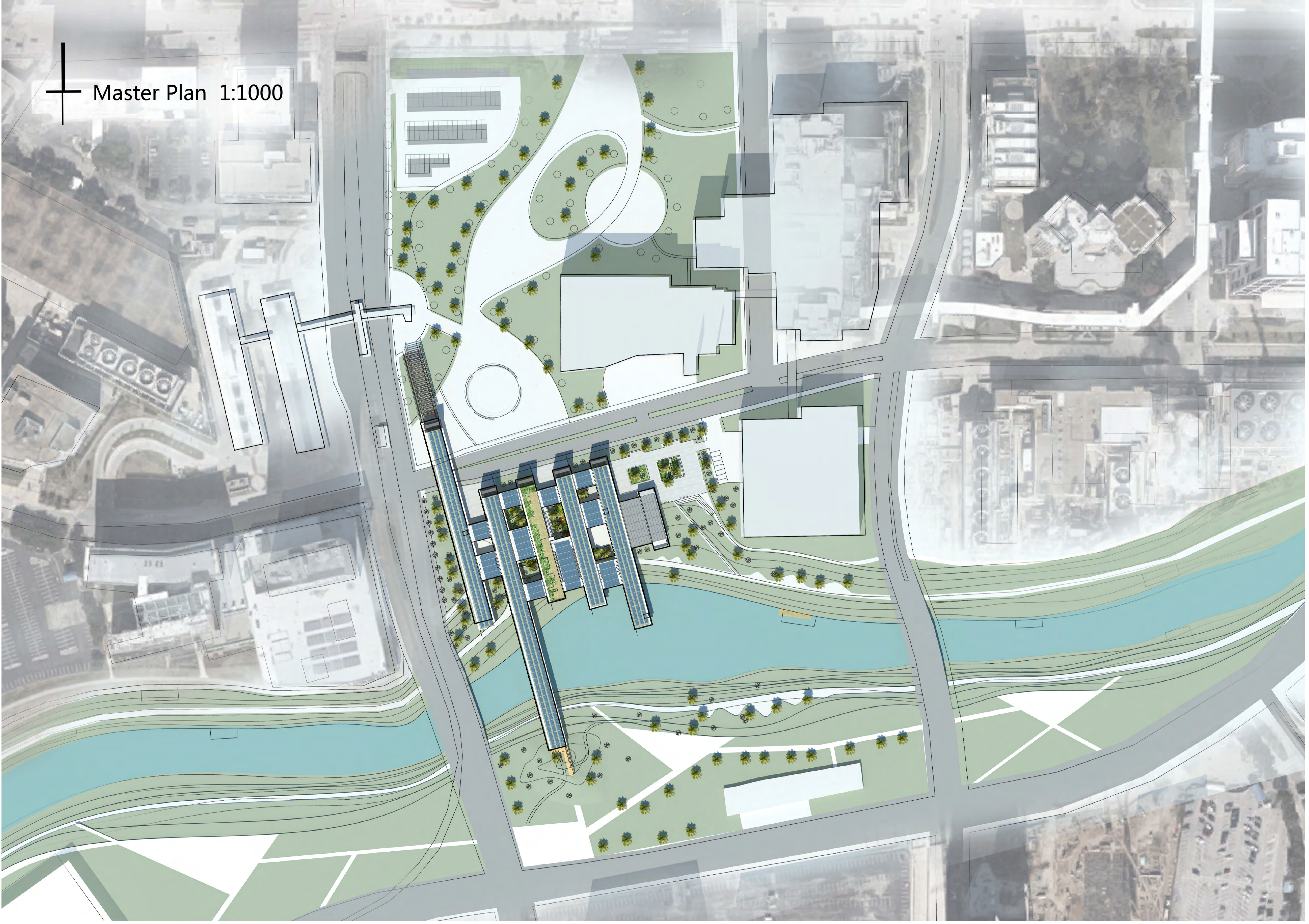
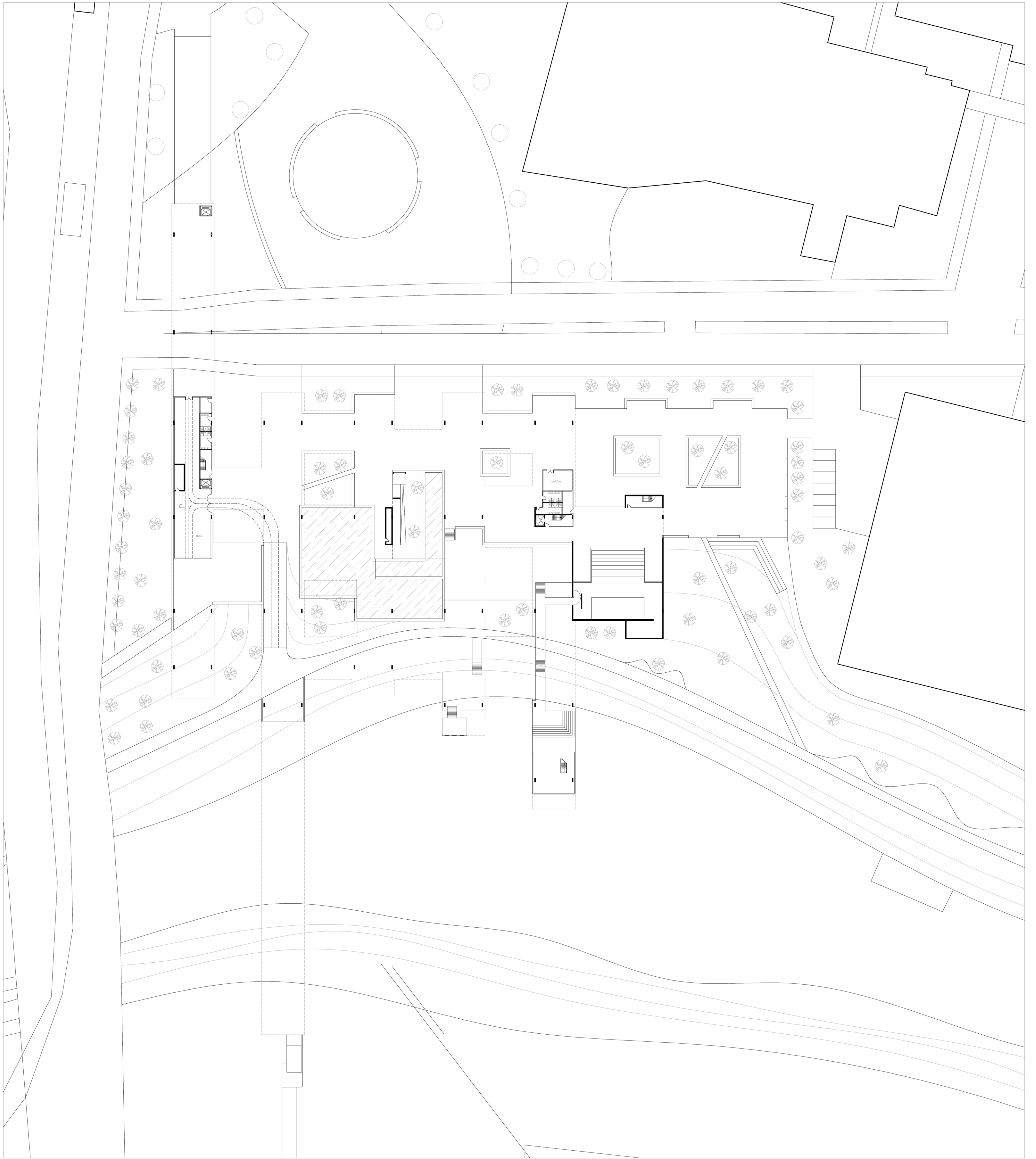


DELTA INTERVENTION 2015
TMC EDUCATION CENTER
QIAN LI

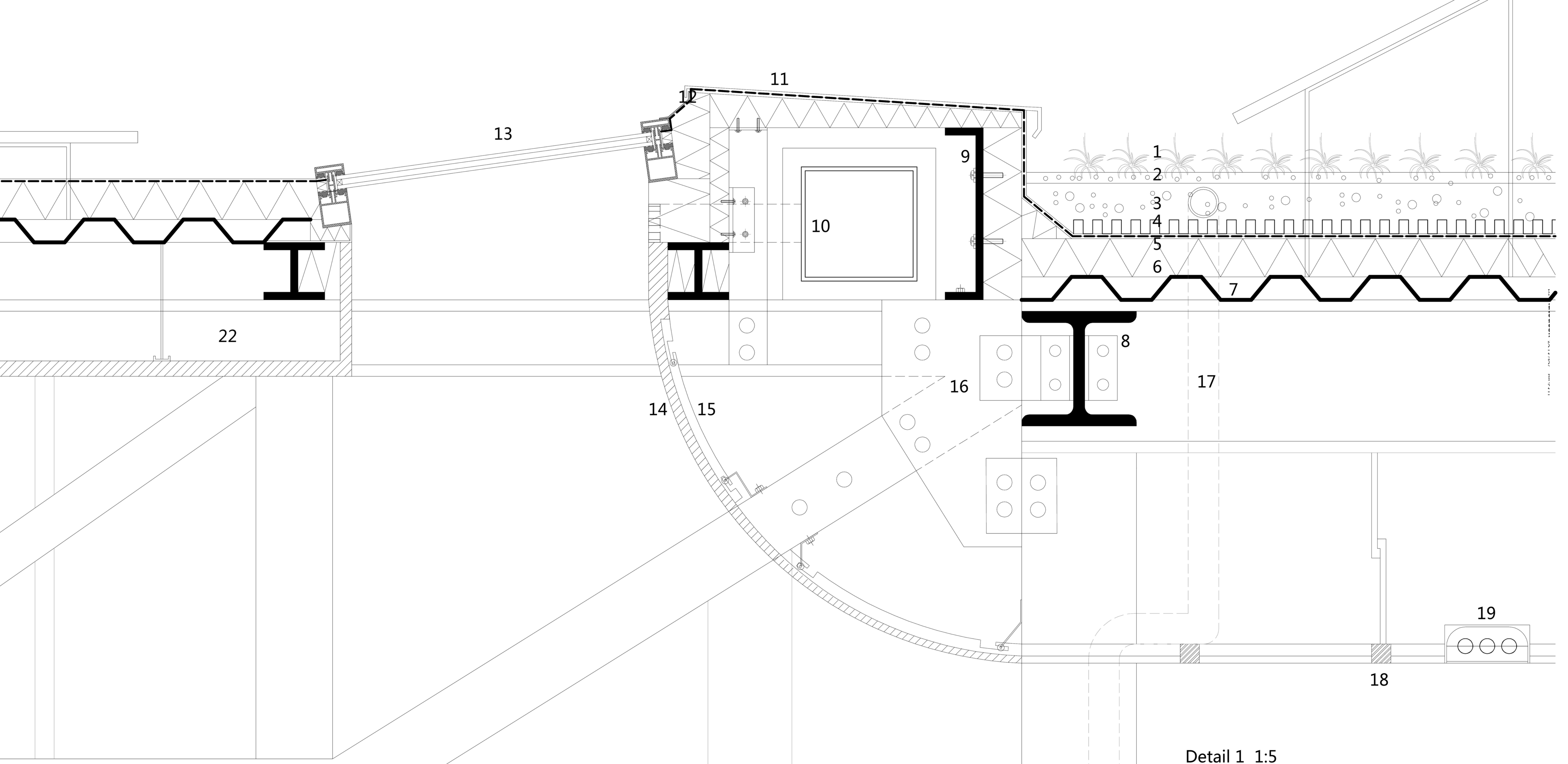




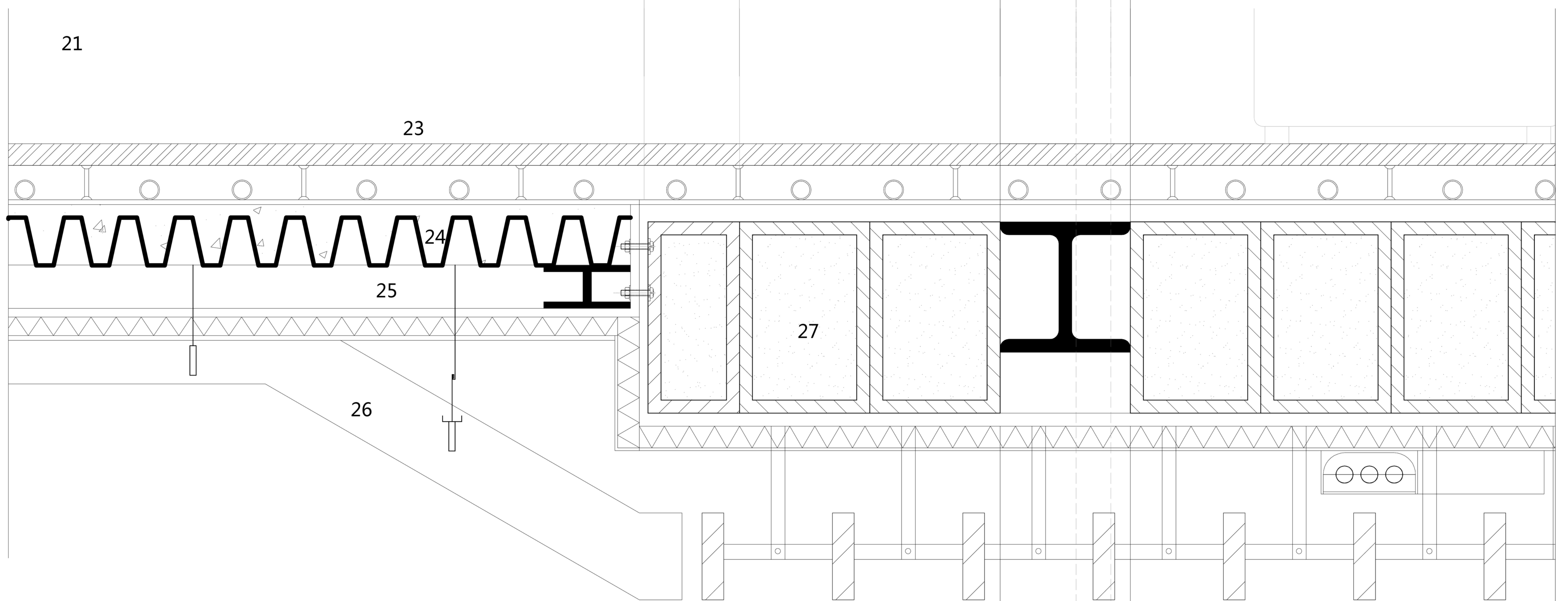
Ground Plan 1:500



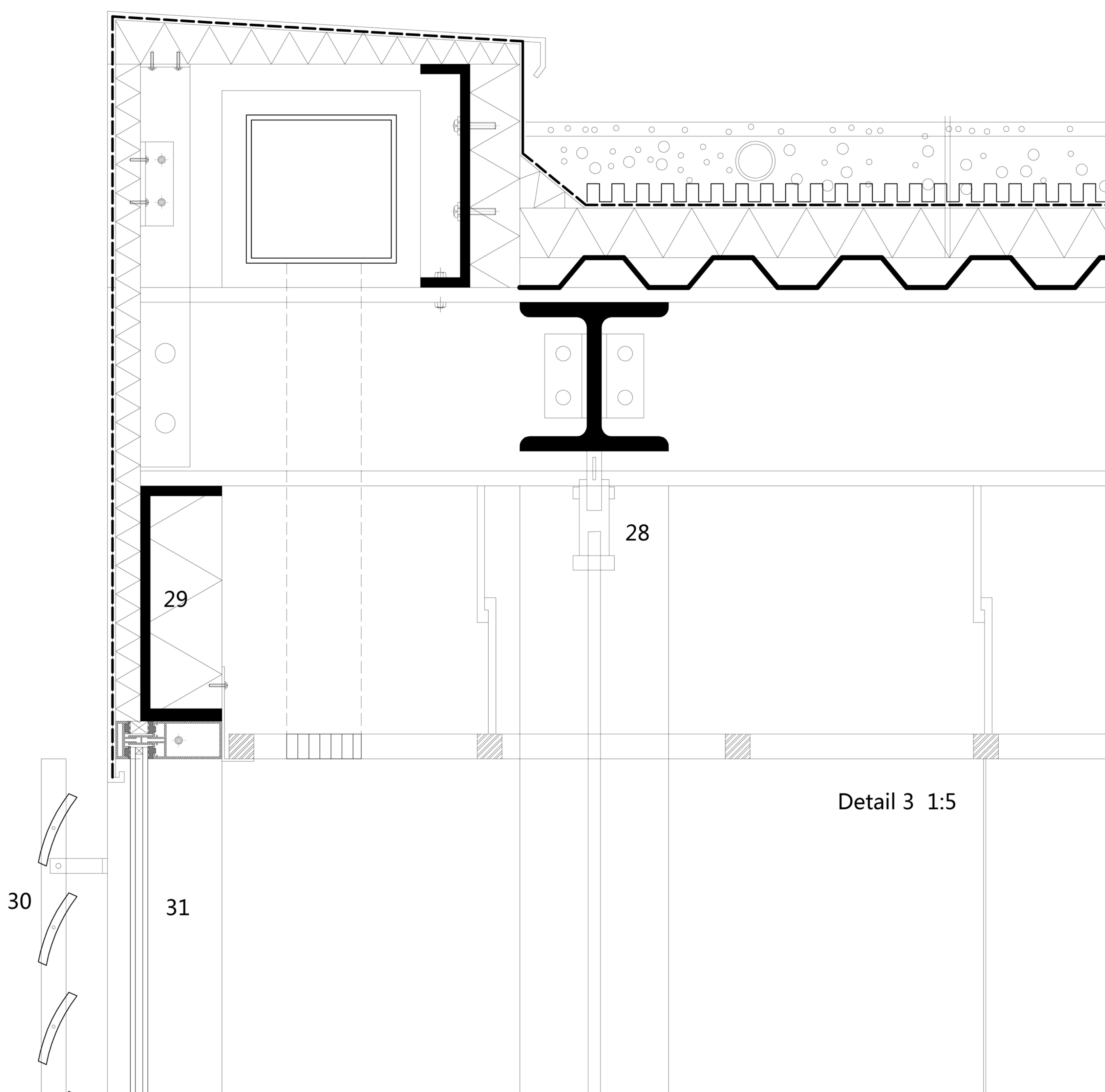
First Floor Plan 1:200



Detail 1 1:5

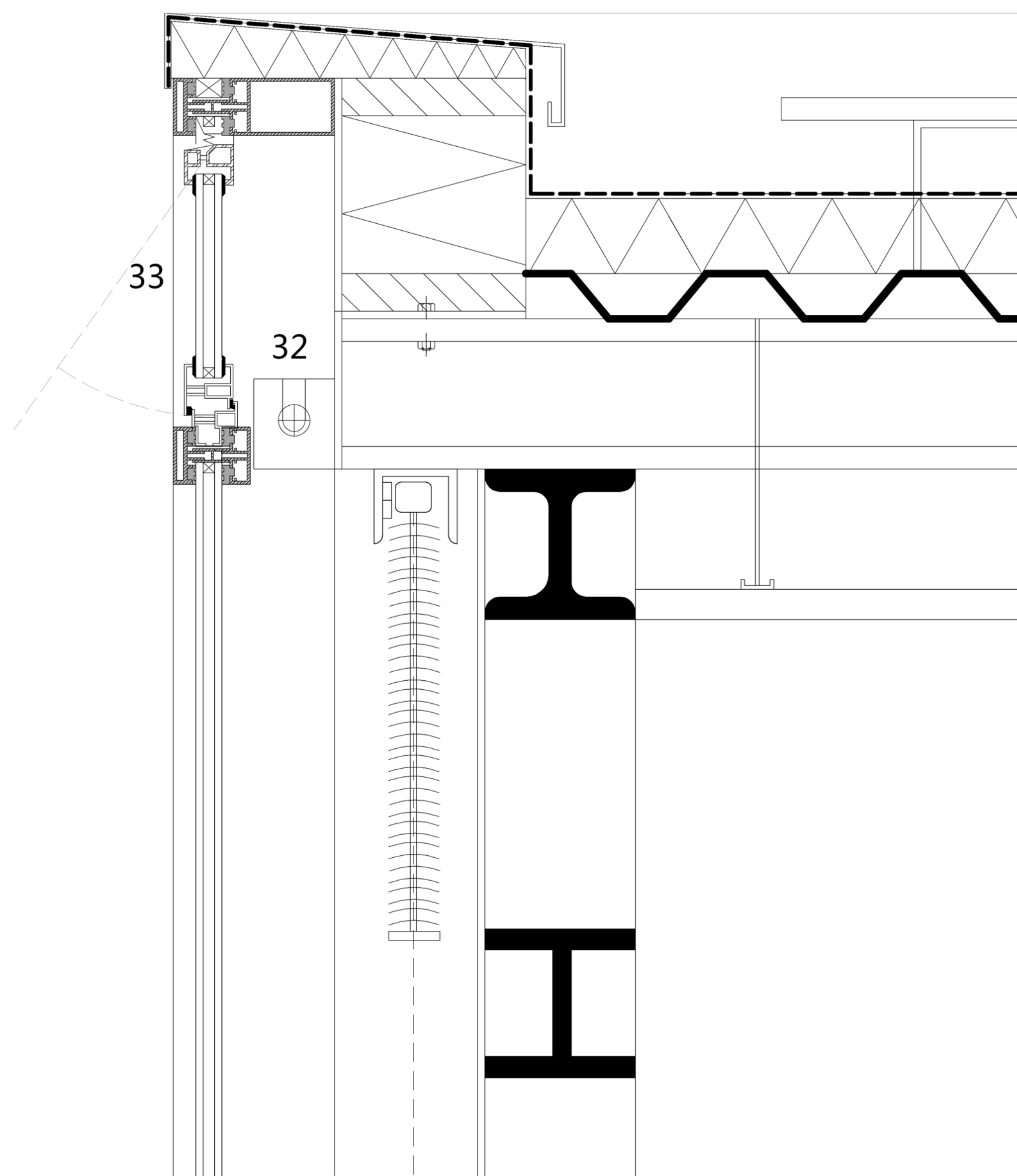


Detail 2 1:5



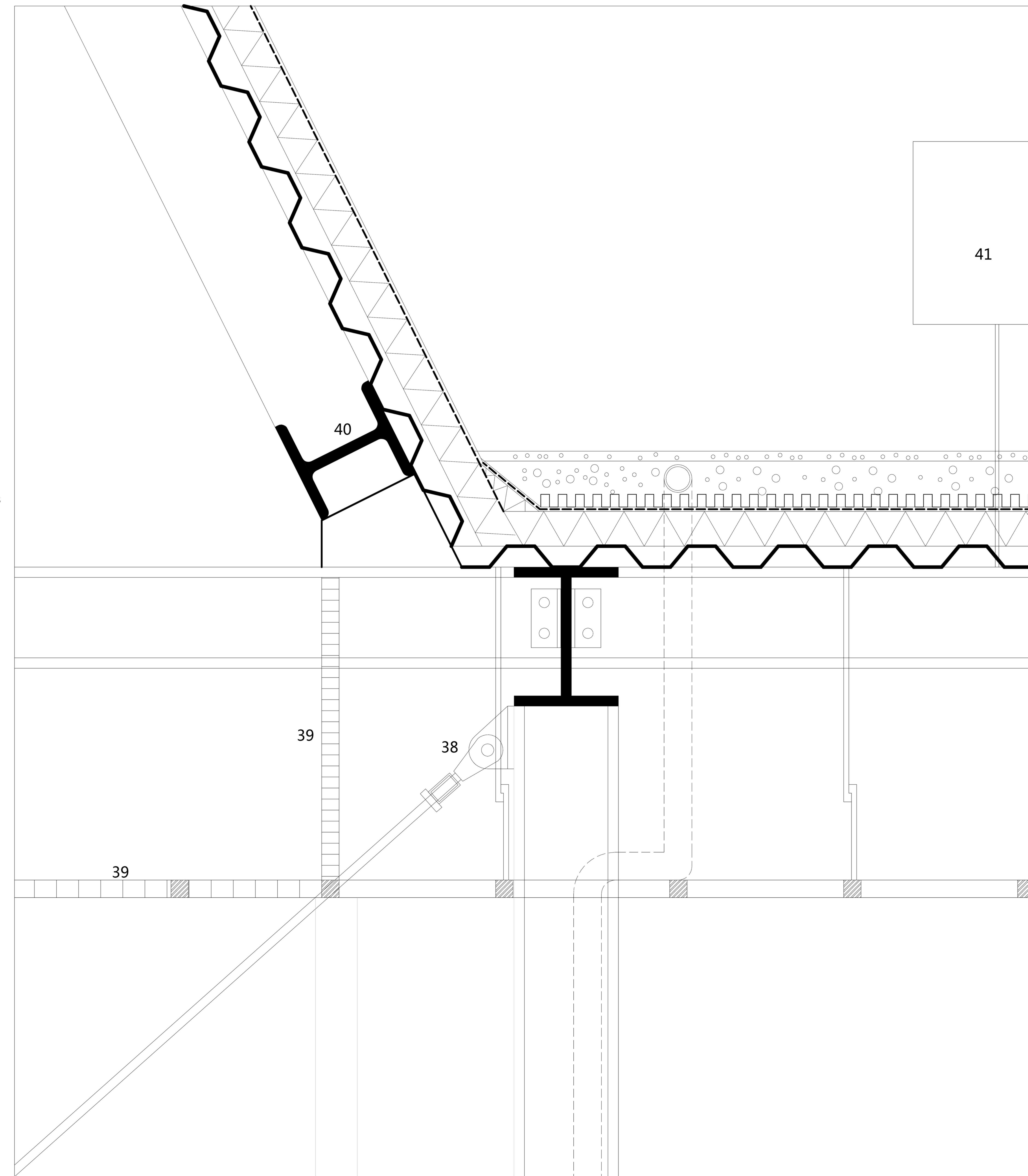
Detail 3 1:5

- 1 vegetation
- 2 light substrate
- 3 drainage layer
- 4 storage mat
- 5 water proof
- 6 insulation layer
- 7 stell floor
- 8 IPE steel beam 50x 30mm
- 9 UPE steel beam
- 10 ventilation pipe
- 11 aluminum cover
- 12 water-proof cover for sky-window
- 13 double layer glass
- 14 wood plate
- 15 steel plate supportings
- 16 steel plate joint
- 17 sewage
- 18 wood ceiling
- 19 artificial light
- 20 HE steel beam 20X20mm
- 21 wood ceiling
- 22 UPE steel beam
- 23 wood pavement
- 24 concrete-stell floor
- 25 IPE steel beam 100X150mm
- 26 wood ceiling for ground-floor
- 27 wood-box beam with stablized sand inside
- 28 steel cable joint
- 29 UPE stell beam
- 30 out wooden shadings
- 31 aluminum window frame
- 32 stell plate
- 33 open window
- 34 IPE stell beam
- 36 concrete-heart stell columns
- 37 stell plate o
- 38 stell cable joints
- 39 louvers
- 41 solar panels

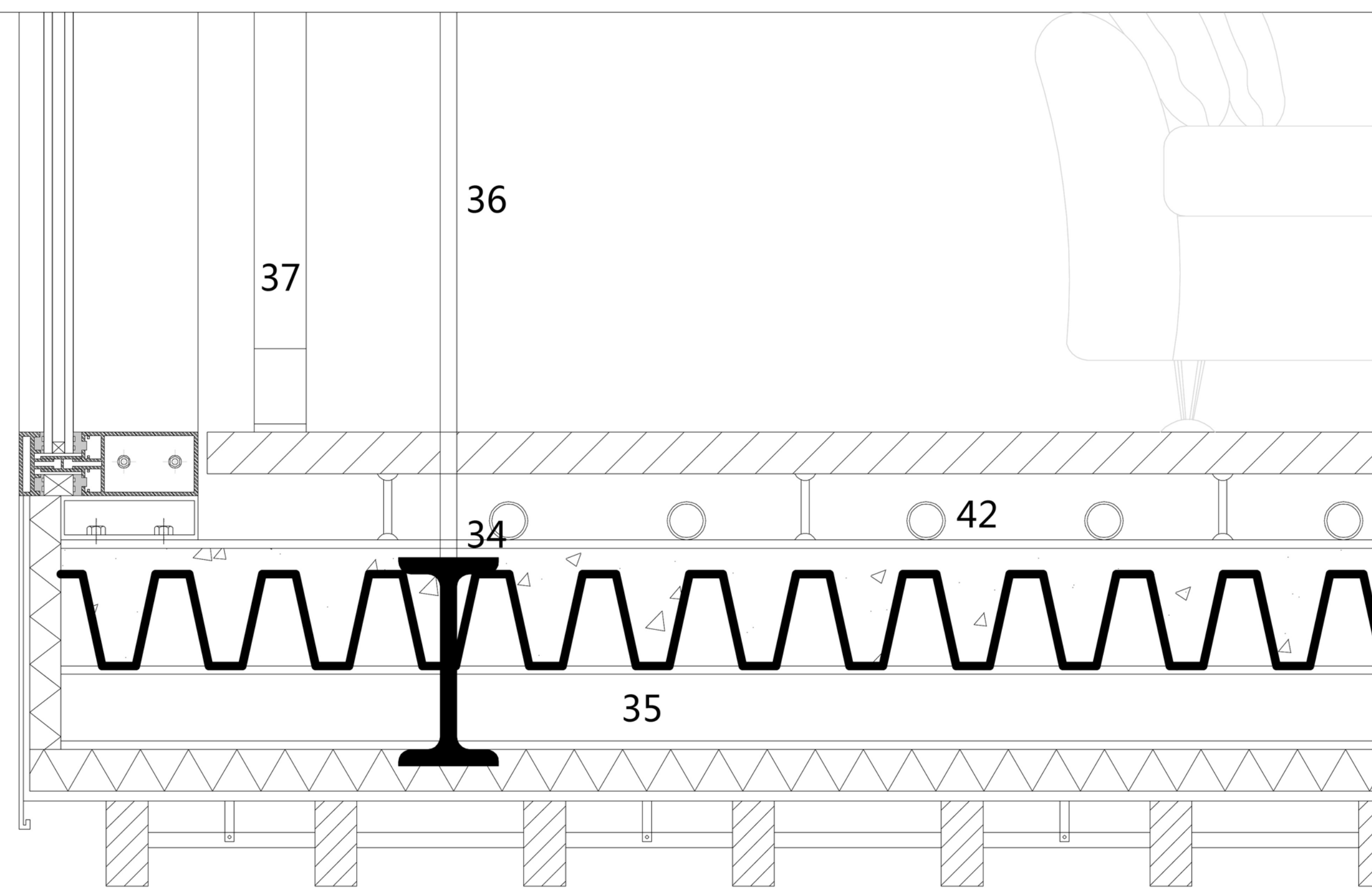


Detail 4 1:5

- 1 vegetation
- 2 light substrate
- 3 drainage layer
- 4 storage mat
- 5 water proof
- 6 insulation layer
- 7 stell floor
- 8 IPE steel beam 50x 30mm
- 9 UPE steel beam
- 10 ventilation pipe
- 11 aluminum cover
- 12 water-proof cover for sky-window
- 13 double layer glass
- 14 wood plate
- 15 steel plate supportings
- 16 steel plate joint
- 17 sewage
- 18 wood ceiling
- 19 artfical light
- 20 HE steel beam 20X20mm
- 21 wood ceiling
- 22 UPE steel beam
- 23 wood pavement
- 24 concrete-stell floor
- 25 IPE steel beam 100X150mm
- 26 wood ceiling for ground-floor
- 27 wood-box beam
- 28 steel cable joint
- 29 UPE steel beam
- 30 out wooden shadings
- 31 aluminum window frame
- 32 steel plate
- 33 open window
- 34 IPE steel beam
- 36 concrete-heart steel columns
- 37 steel plate o
- 38 steel cable joints
- 39 louvers
- 41 solar panels
- 42 heat pump water tubes



Detail 6 1:5



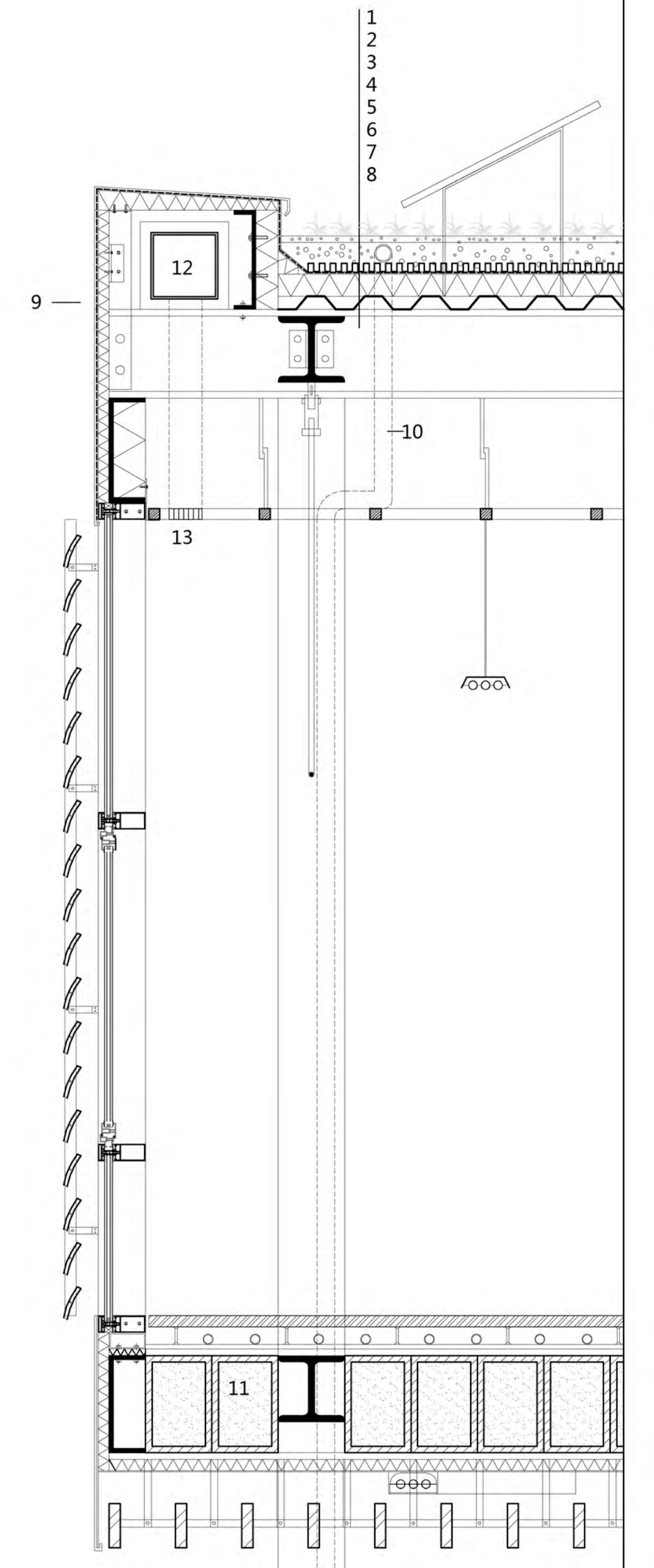
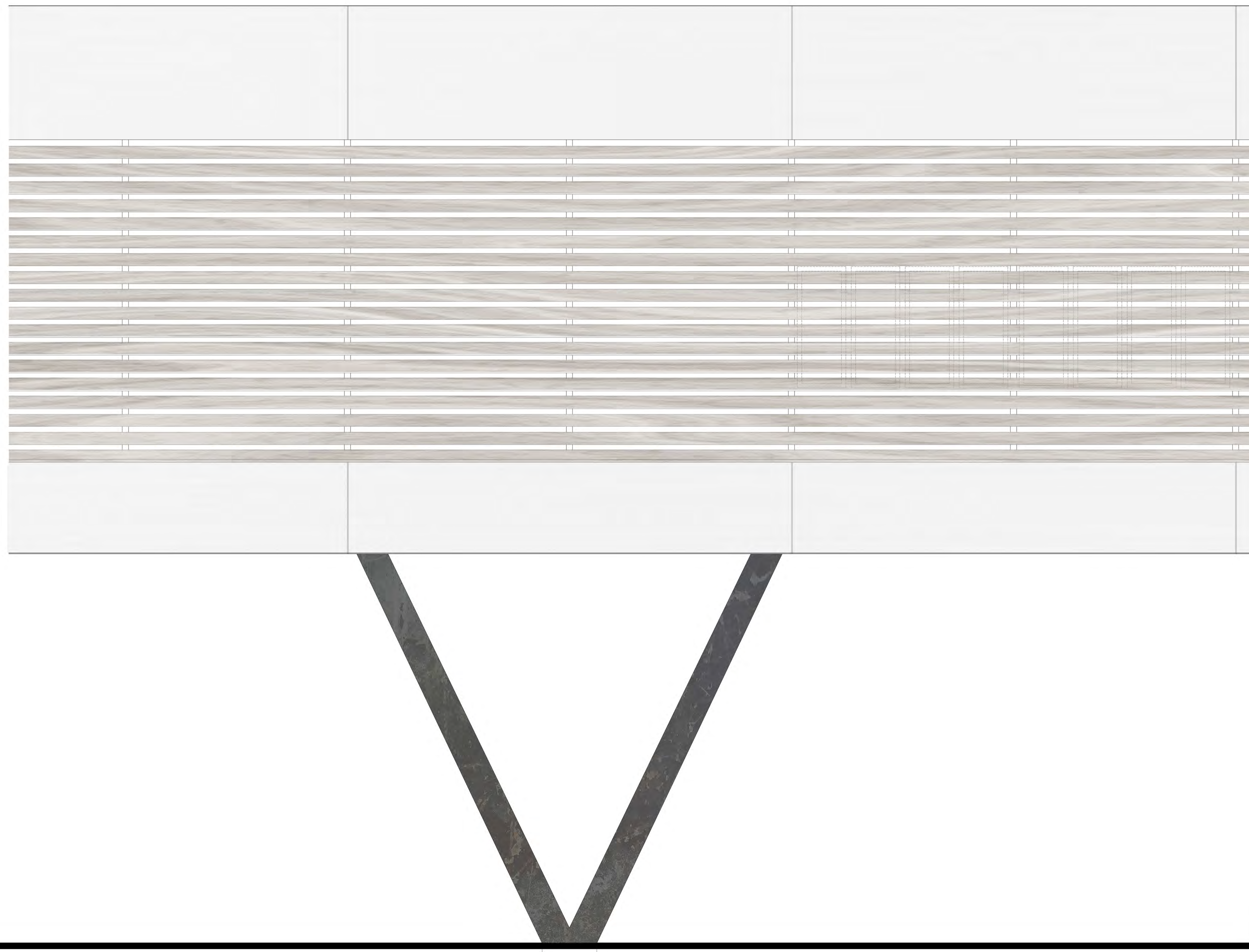
Detail 5 1:5

10.55

9.00

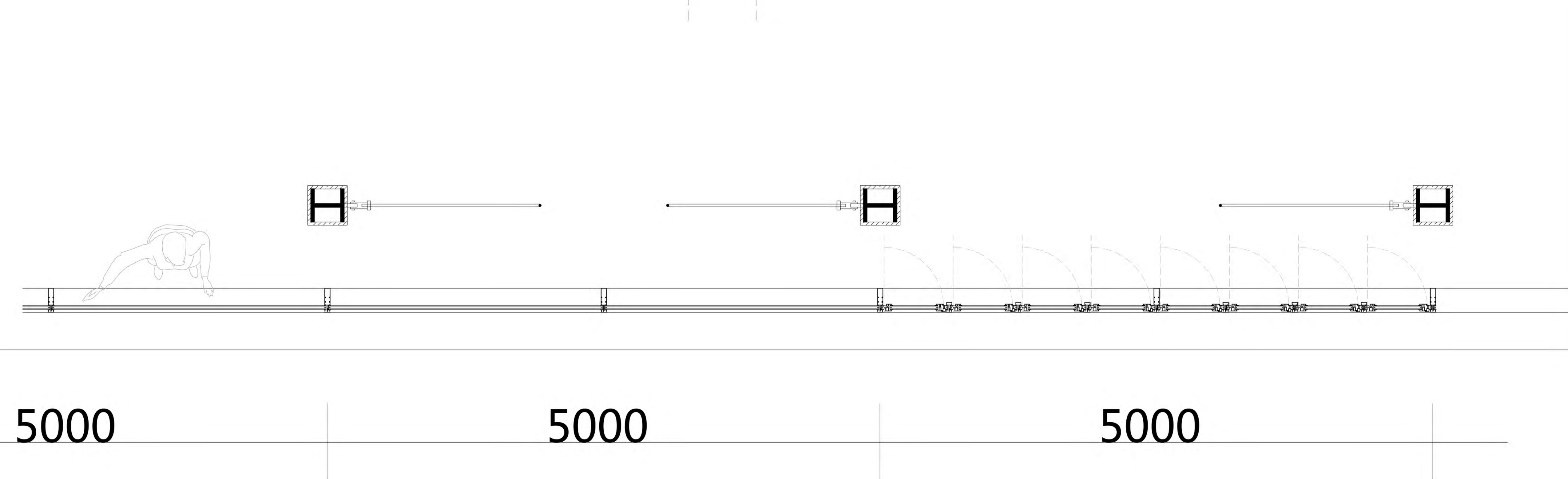
4.50

0.00



- 1 vegetation
- 2 light substrate
- 3 drainage layer
- 4 storage mat
- 5 water proof
- 6 insulation layer
- 7 stell floor
- 8 IPE stell beam 50x 30mm
- 9 aluminum clading
- 10 sweage pipe
- 11 wood box 50x35mm with stablized sand
- 12 ventilation pipe
- 13 air exhausting

Facade Fragment 1 1:20



5000

5000

5000

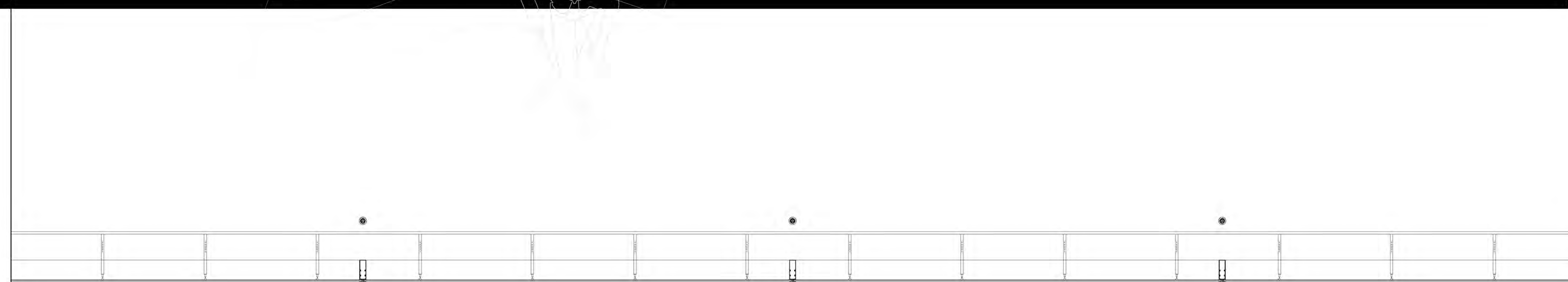
700

10.55

5.50

4.90

0.00

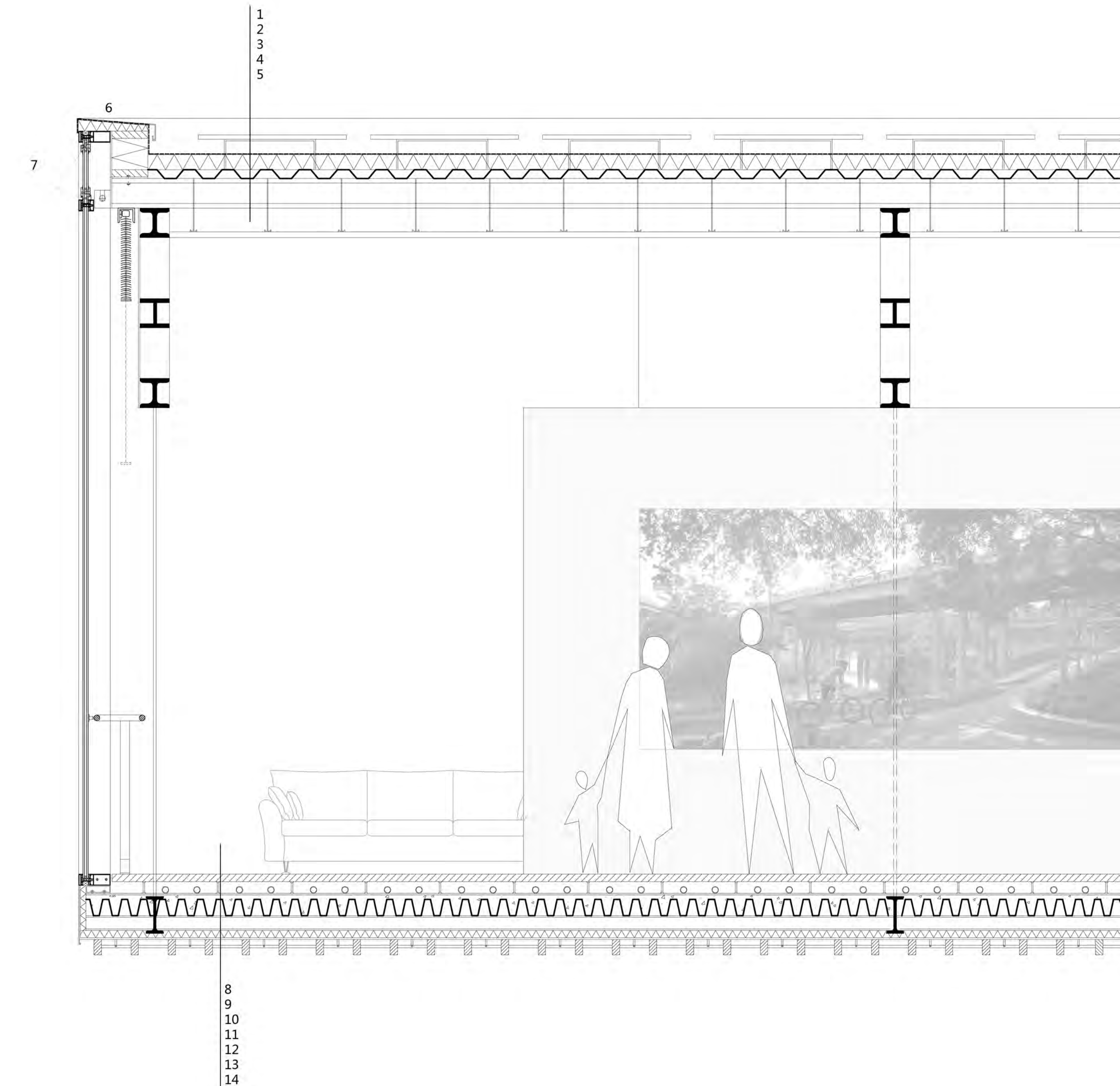


3000

3400

3400

3000



- 1 solar panel
- 2 water proof
- 3 insulation layer
- 4 stell floor
- 5 HE stell beam 20x 20mm
- 6 aluminum clading
- 7 open window
- 8 wood floor cover
- 9 heat-pump water tubes
- 10 insulation layer
- 11 steel deck
- 12 HE steel beam
- 13 insullation
- 14 water proof
- 15 wood ceiling grid

Facade Fragment 2 1:20



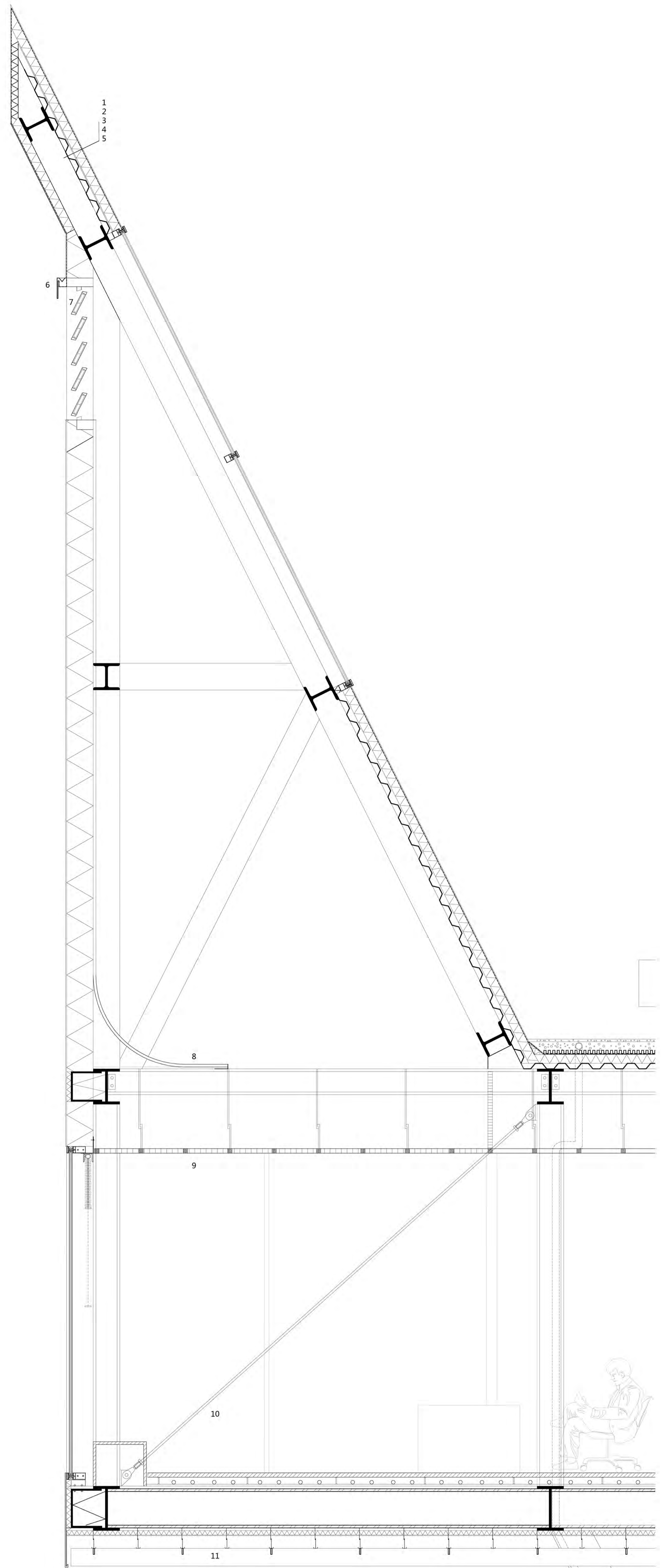
21.50

19.00

9.00

5.40

4.40

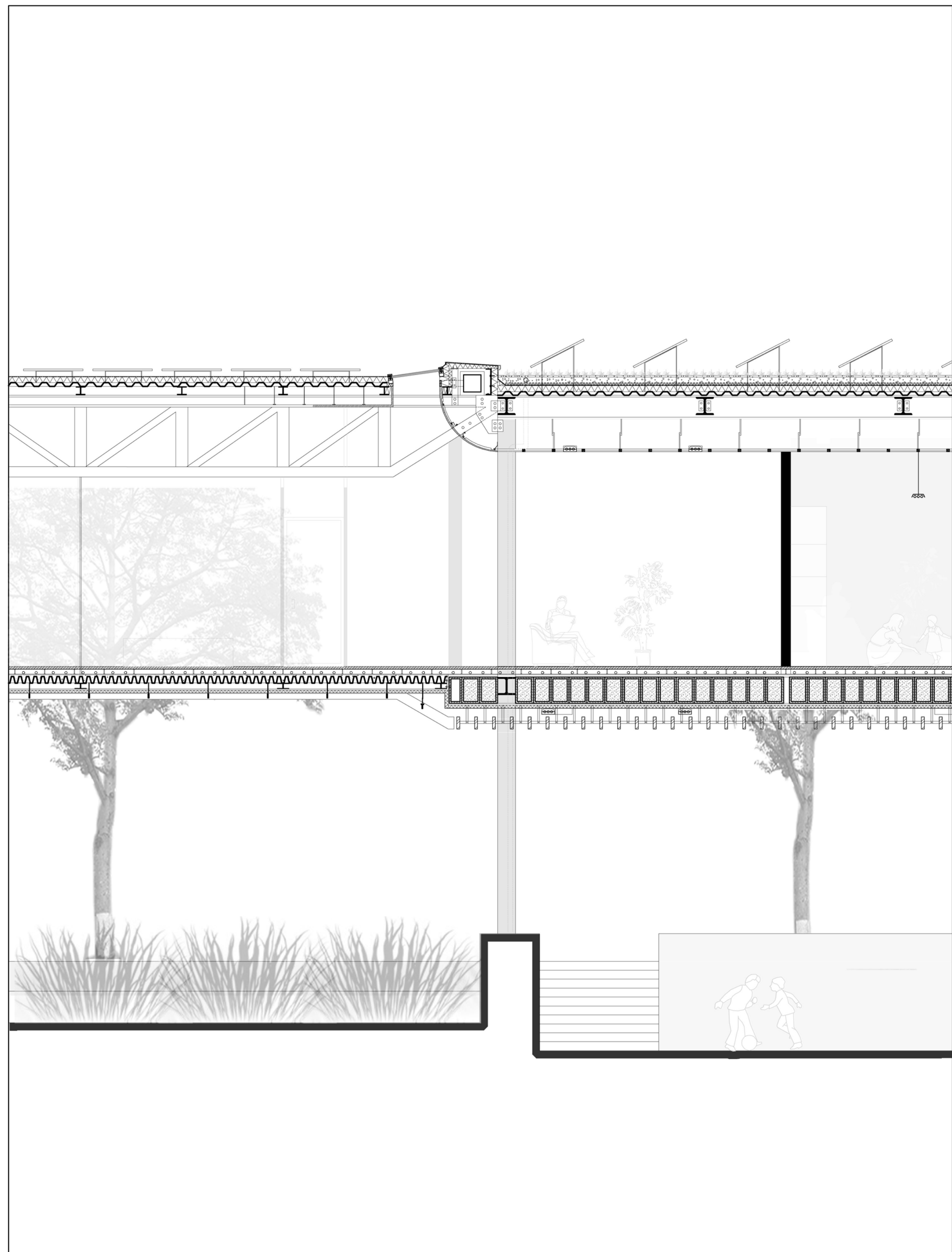


- 1 fiber cement panel 15mm
- 2 water proof
- 3 insulation layer
- 4 steel deck
- 5 HE beam 20X20mm
- 6 aluminum water drop
- 7 aluminum louvers
- 8 Black light absorb board
- 9 aluminum grid ceiling
- 10 steel cable
- 11 wood ceiling

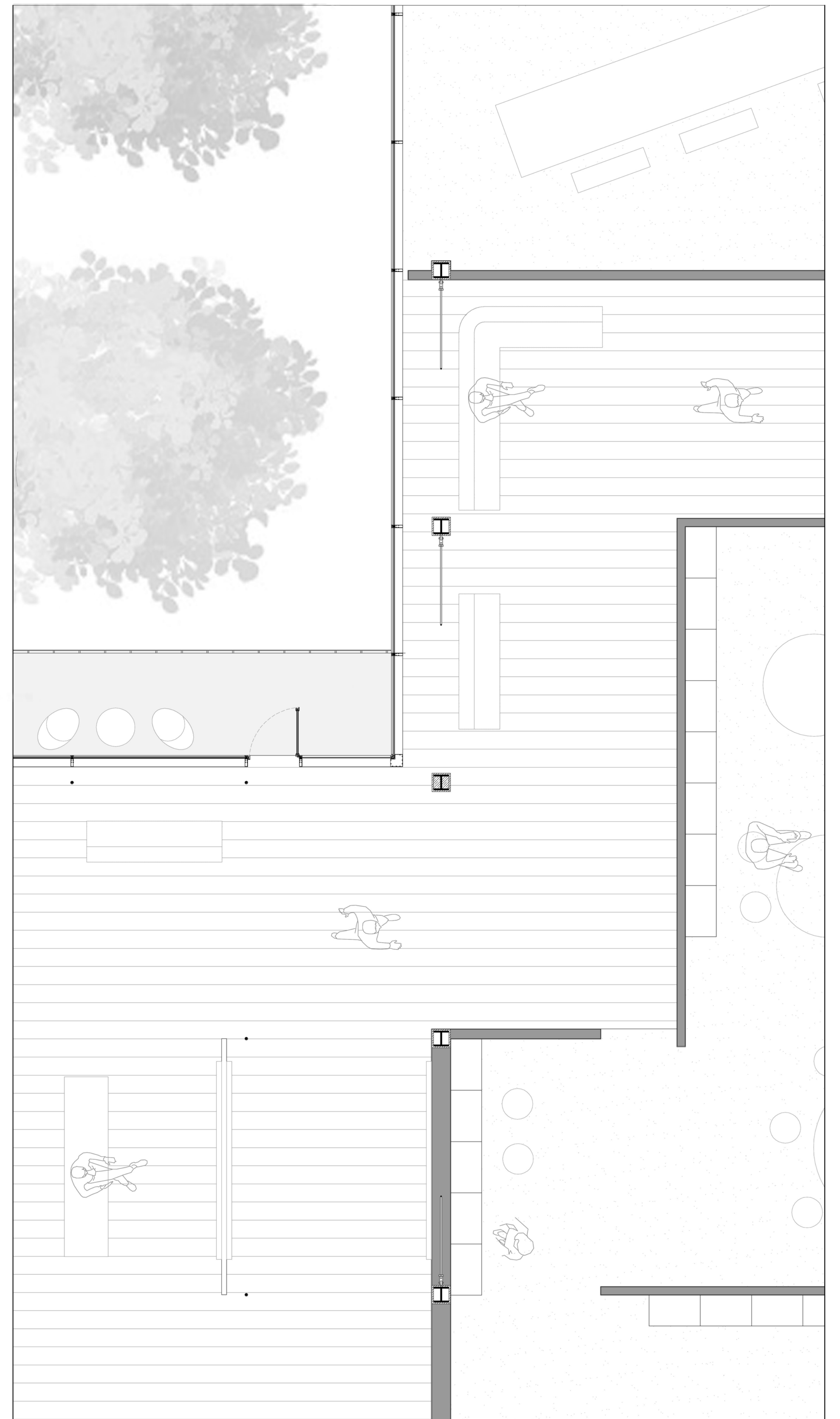
5000

5000

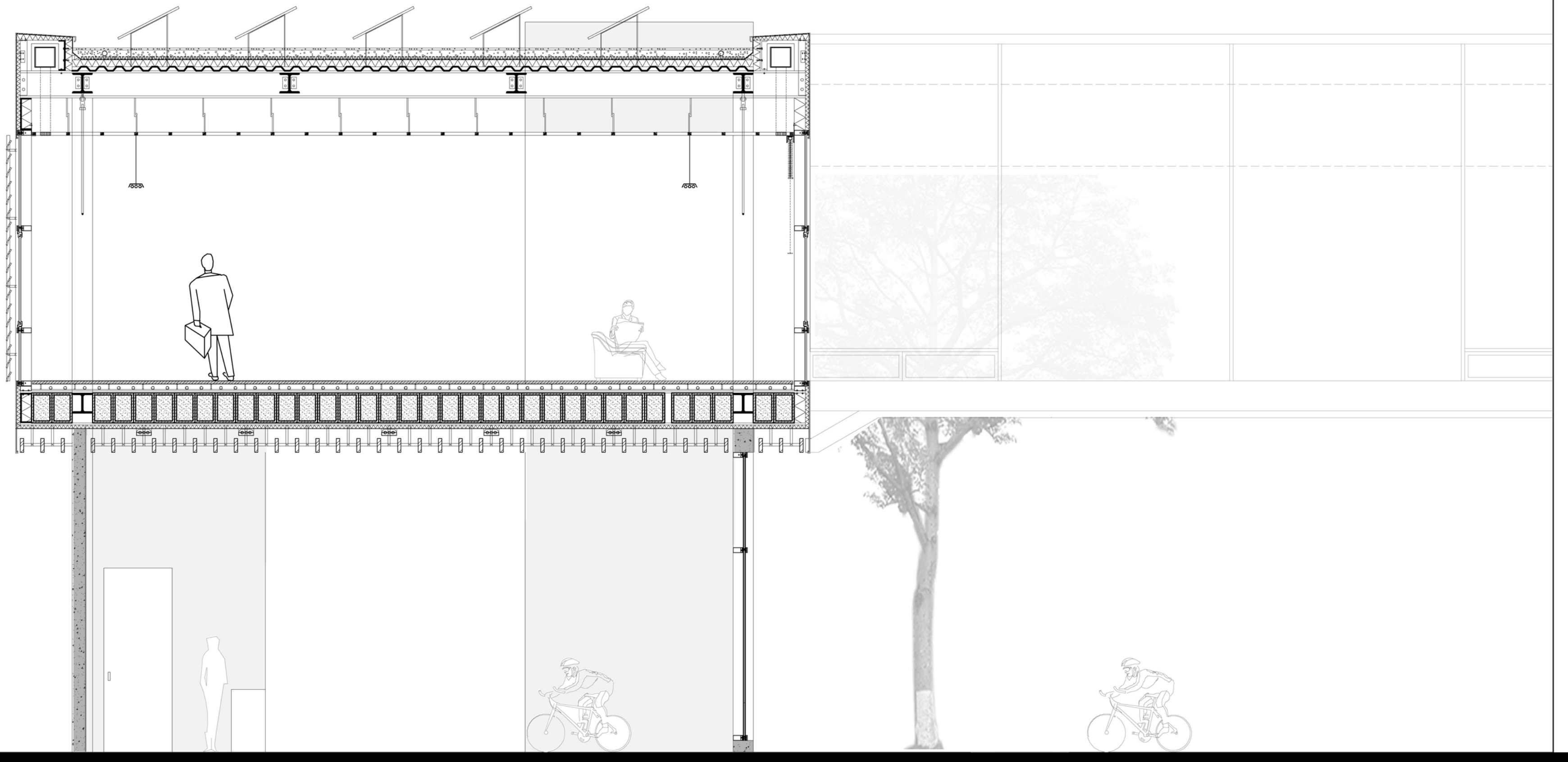
Facade Fragment 3 1:20



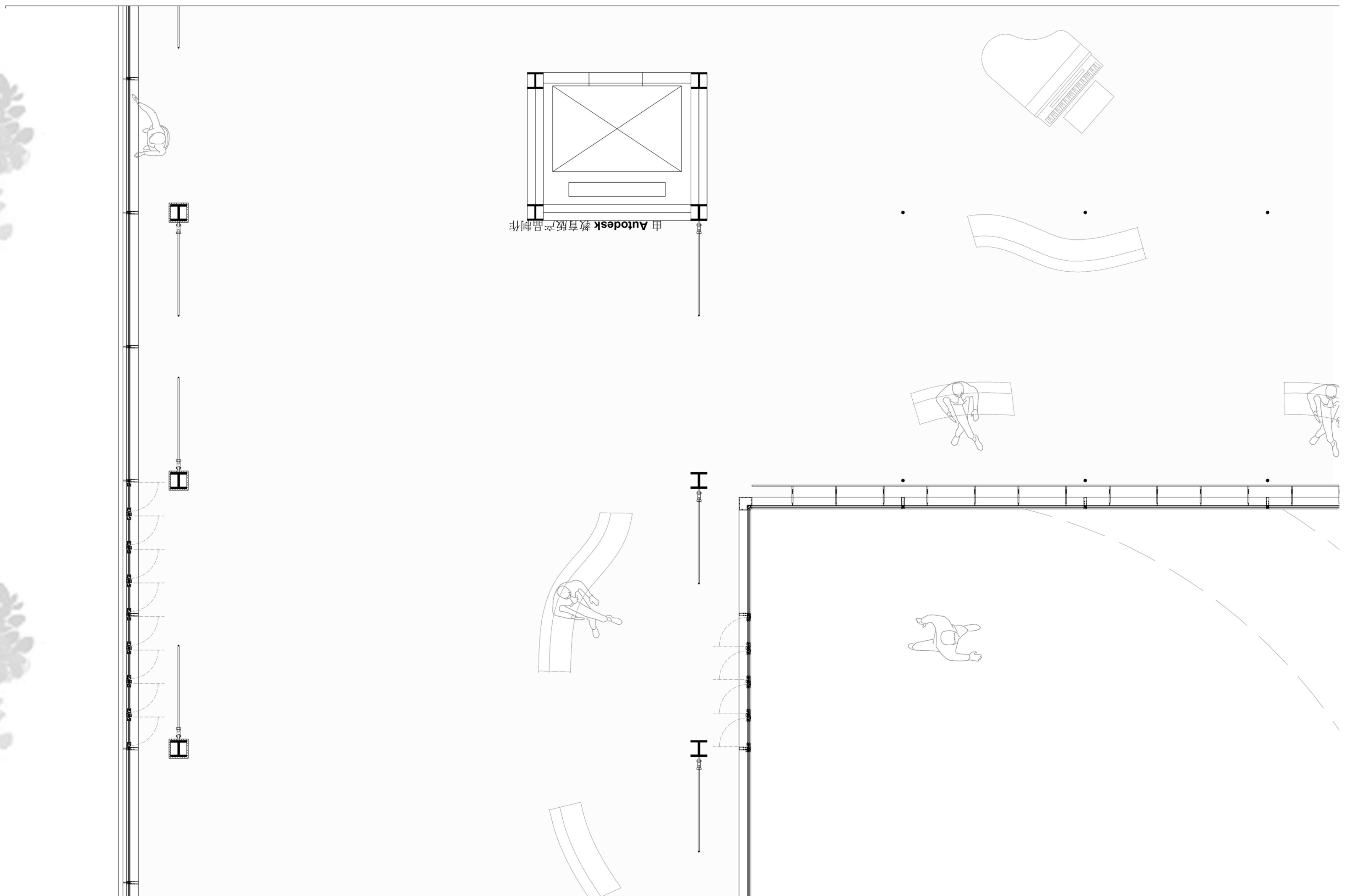
Space Fragment 1 1:50

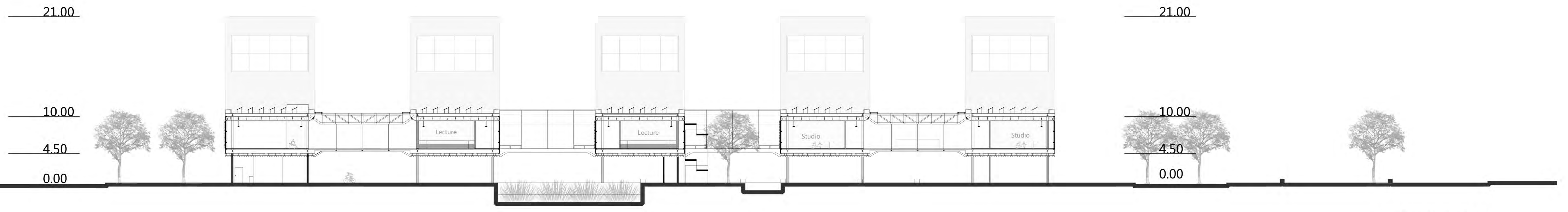


10.55
9.00
5.40
4.40
0.00

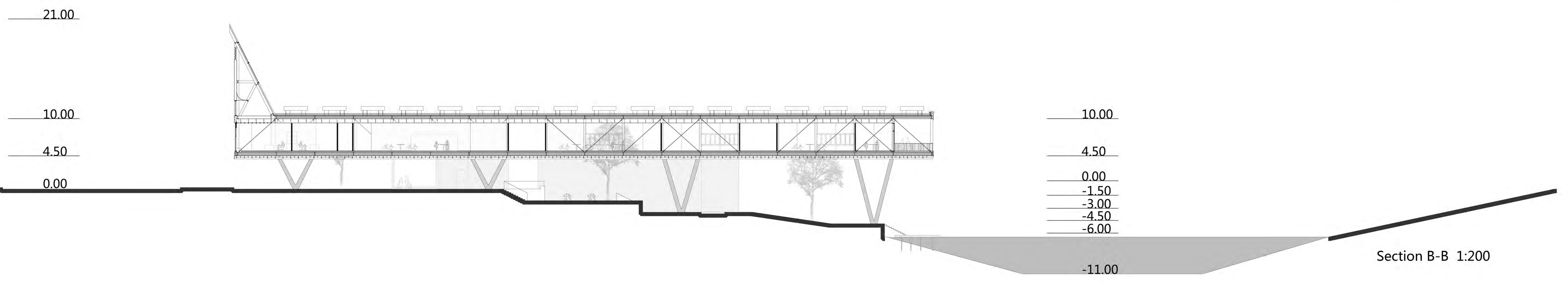


Space Fragment 2 1:50

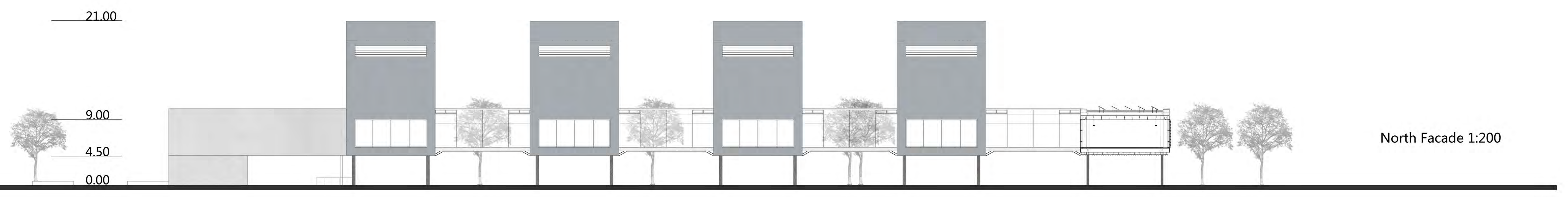




Section A-A 1:200



Section B-B 1:200



North Facade 1:200