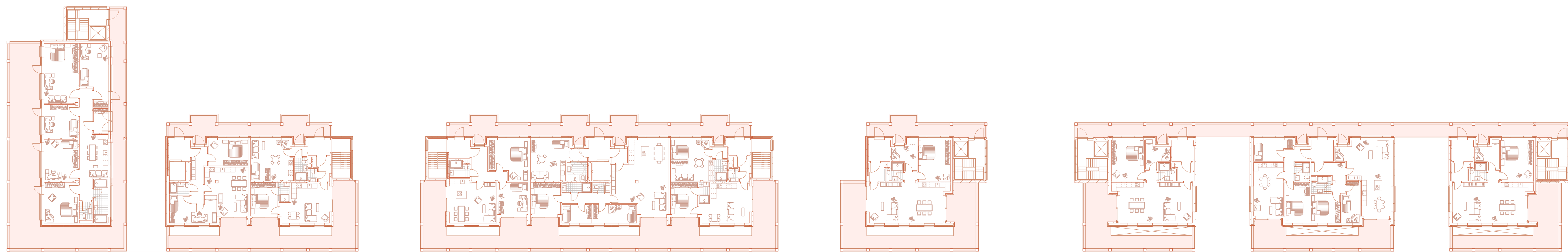


LEYWEG AS THE HEART OF THE COMMUNITY

FLOORPLANS

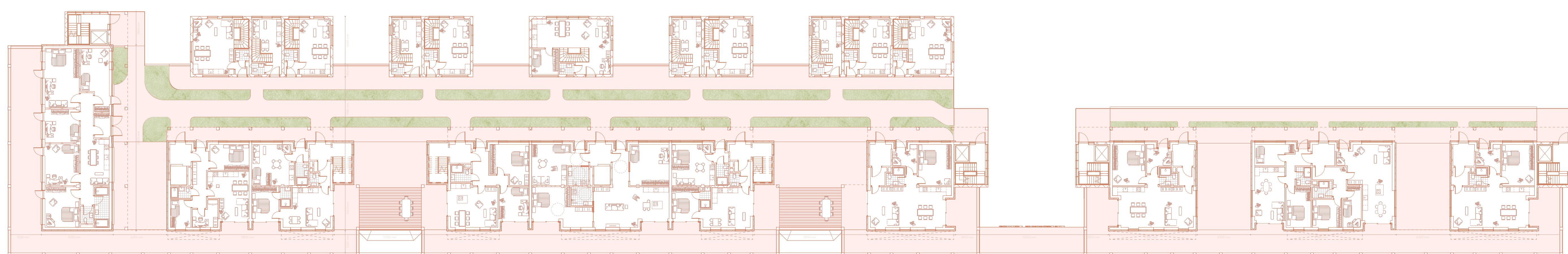
KRISTEN DELIS
AR3AH105 Graduation Studio
Adapting 20th Century Heritage



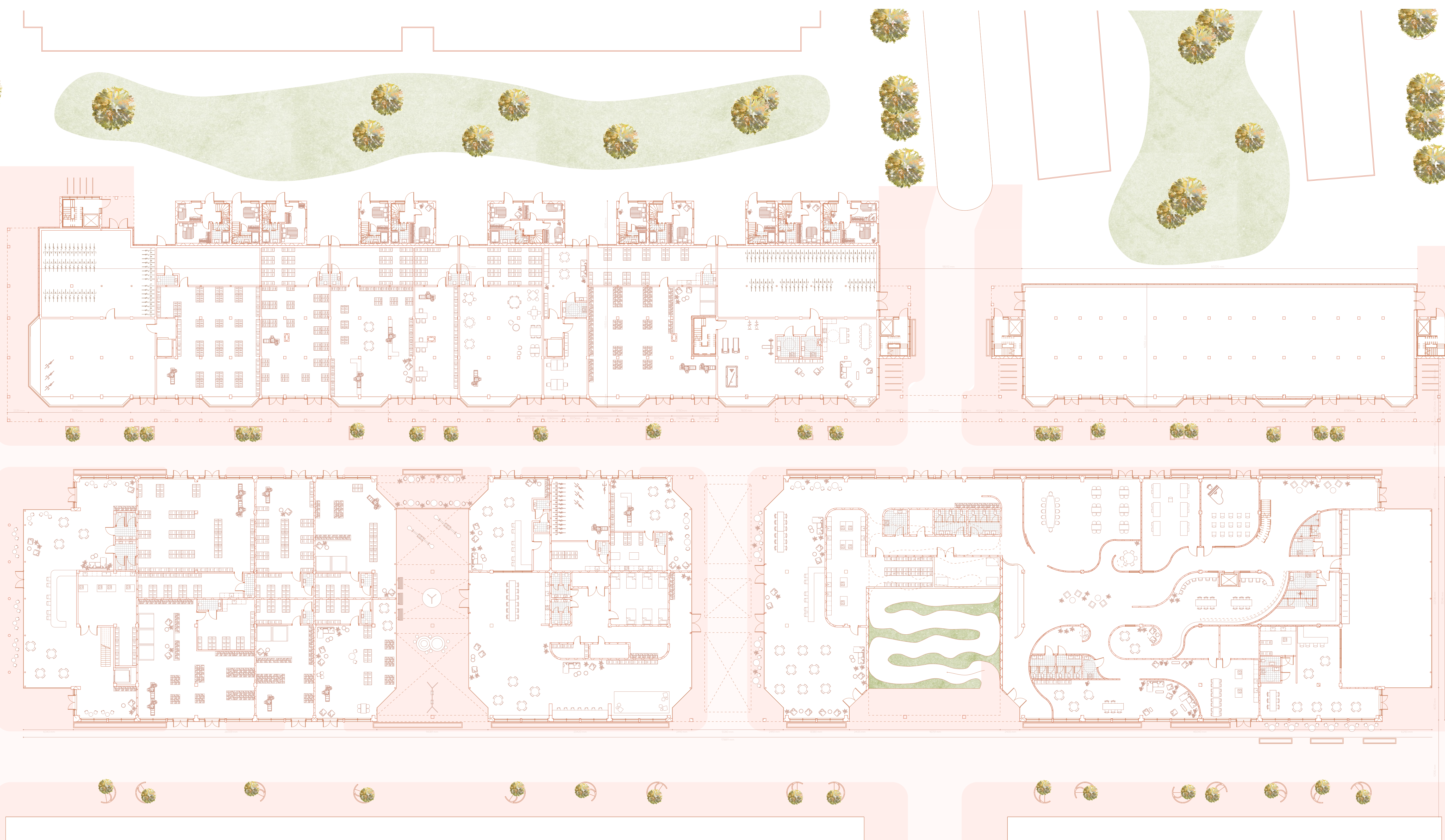
Third floor community housing 1:250



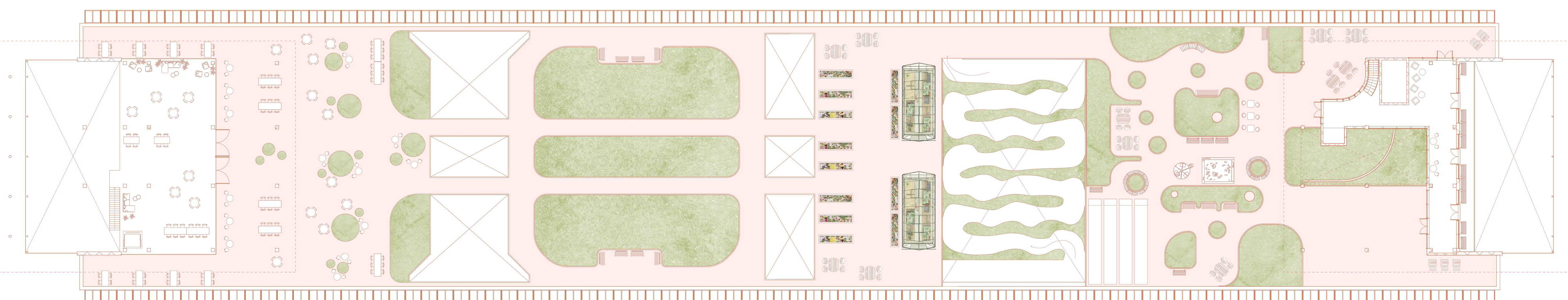
Second floor community housing 1:250



First floor community housing 1:250



Site plan 1:250



First floor community centre 1:250



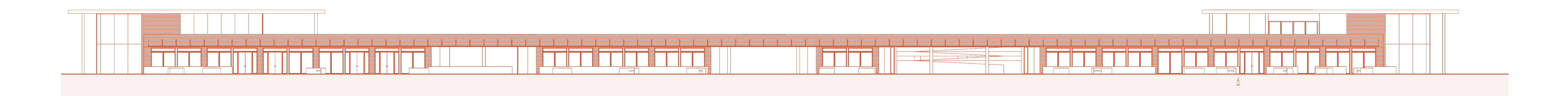
LEYWEG AS THE HEART OF THE COMMUNITY

FACADES AND SECTIONS

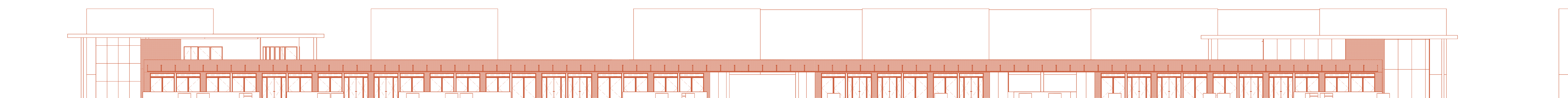
KRISTEN DELIS
AR3AH105 Graduation Studio
Adapting 20th Century Heritage



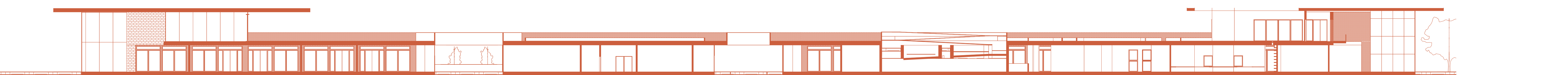
Section A 1:100



South-west facade 1:250



North-east facade 1:250



Section B 1:250



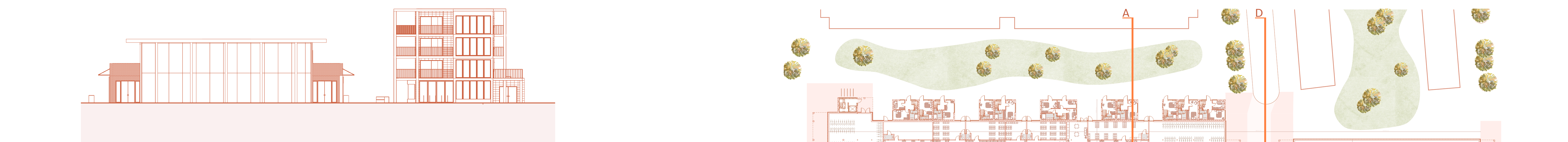
South-west facade 1:250



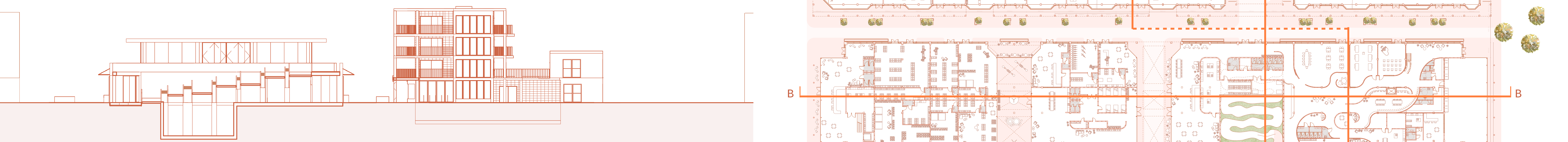
North-east facade 1:250



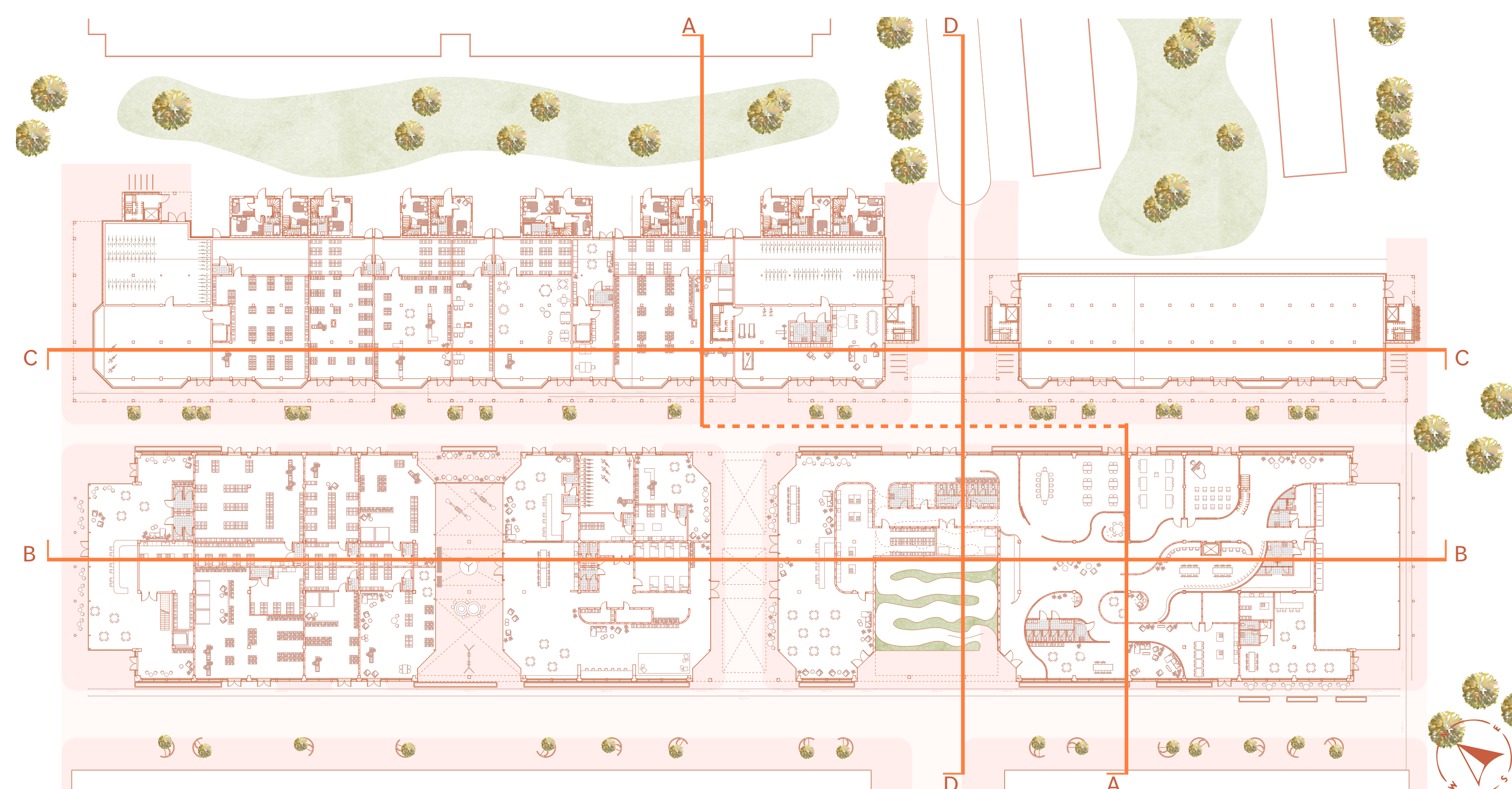
Section C 1:250



South-east facade 1:250



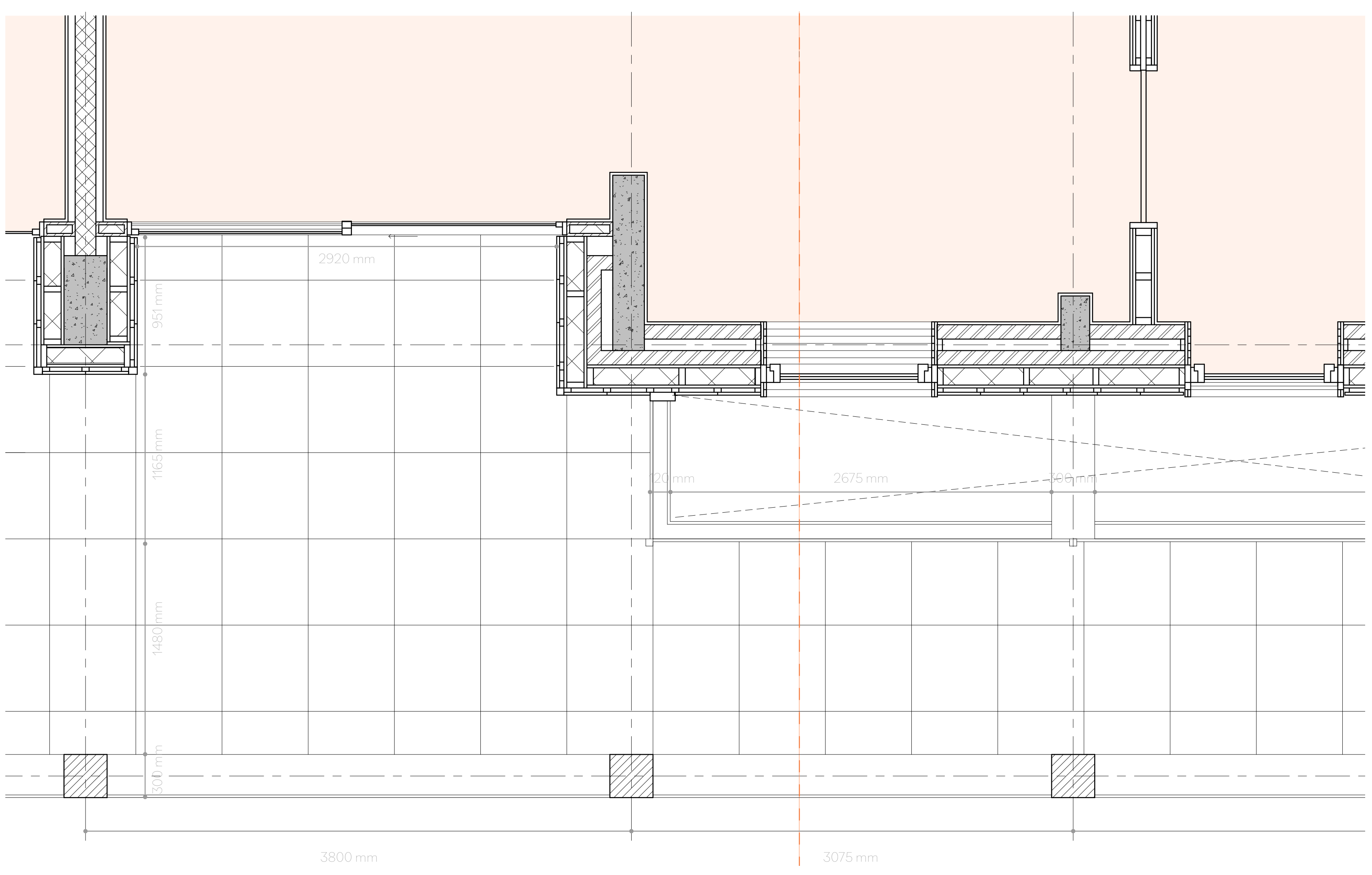
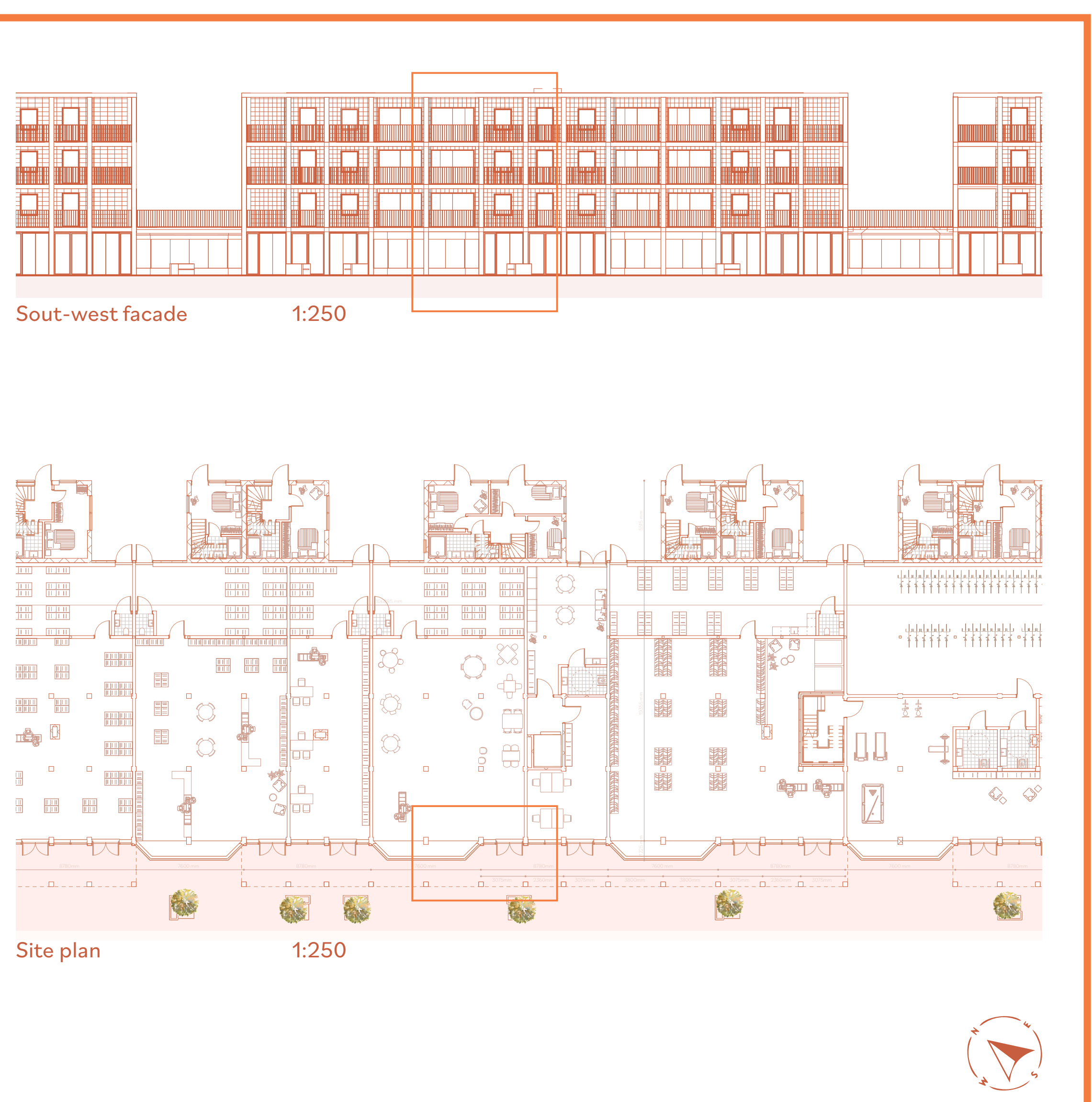
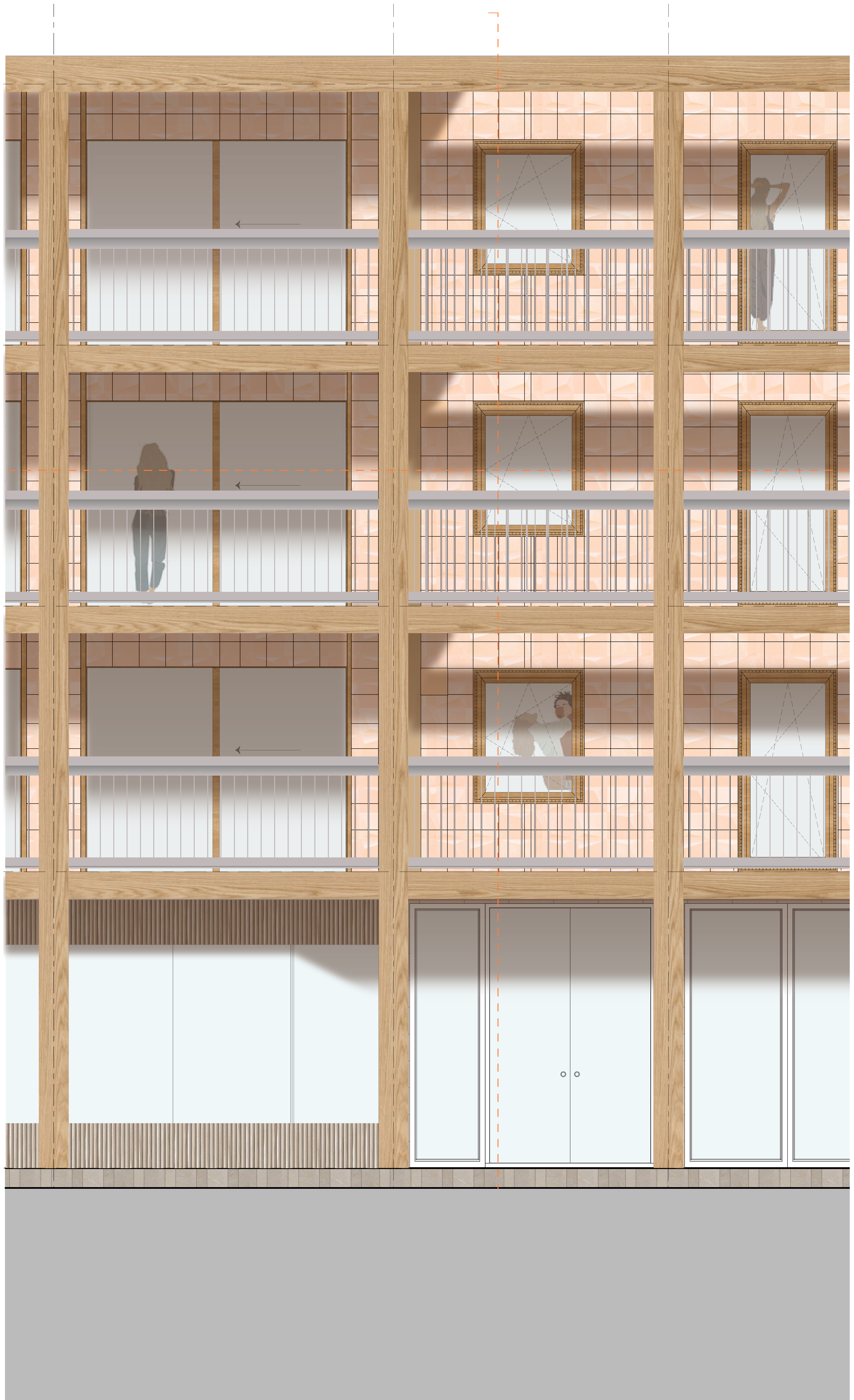
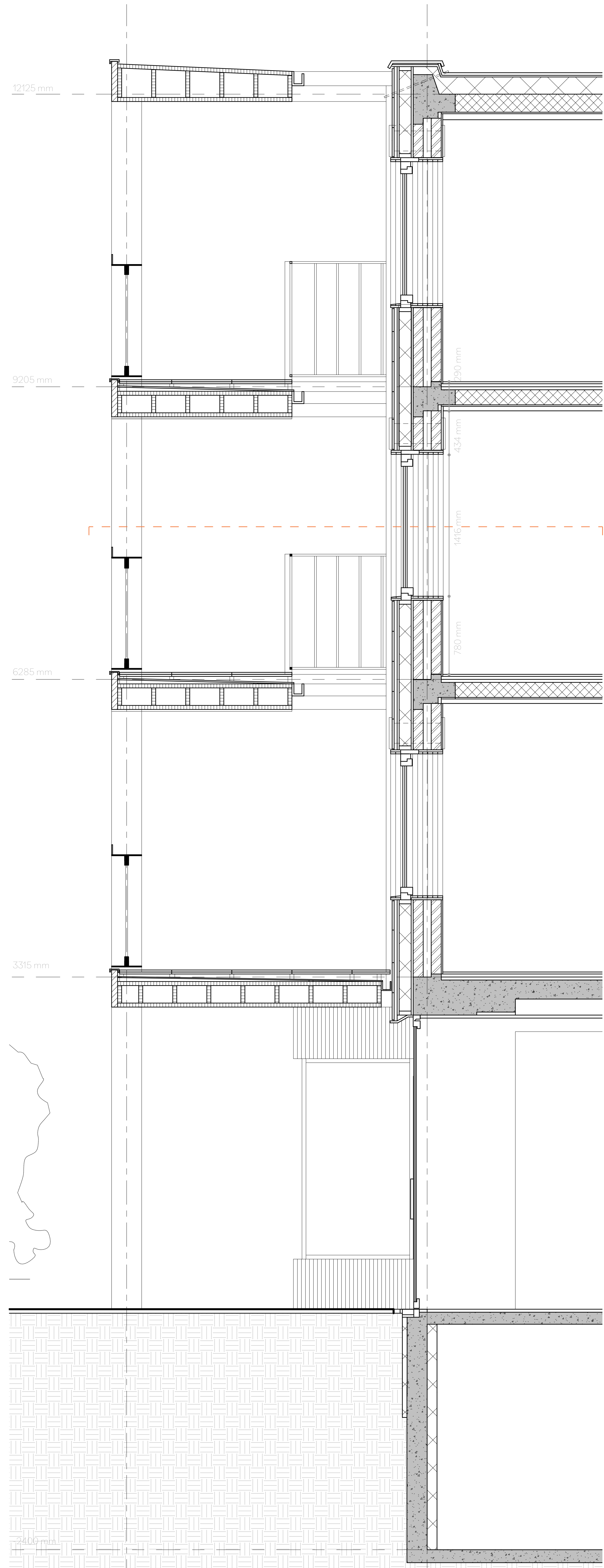
Section D 1:250

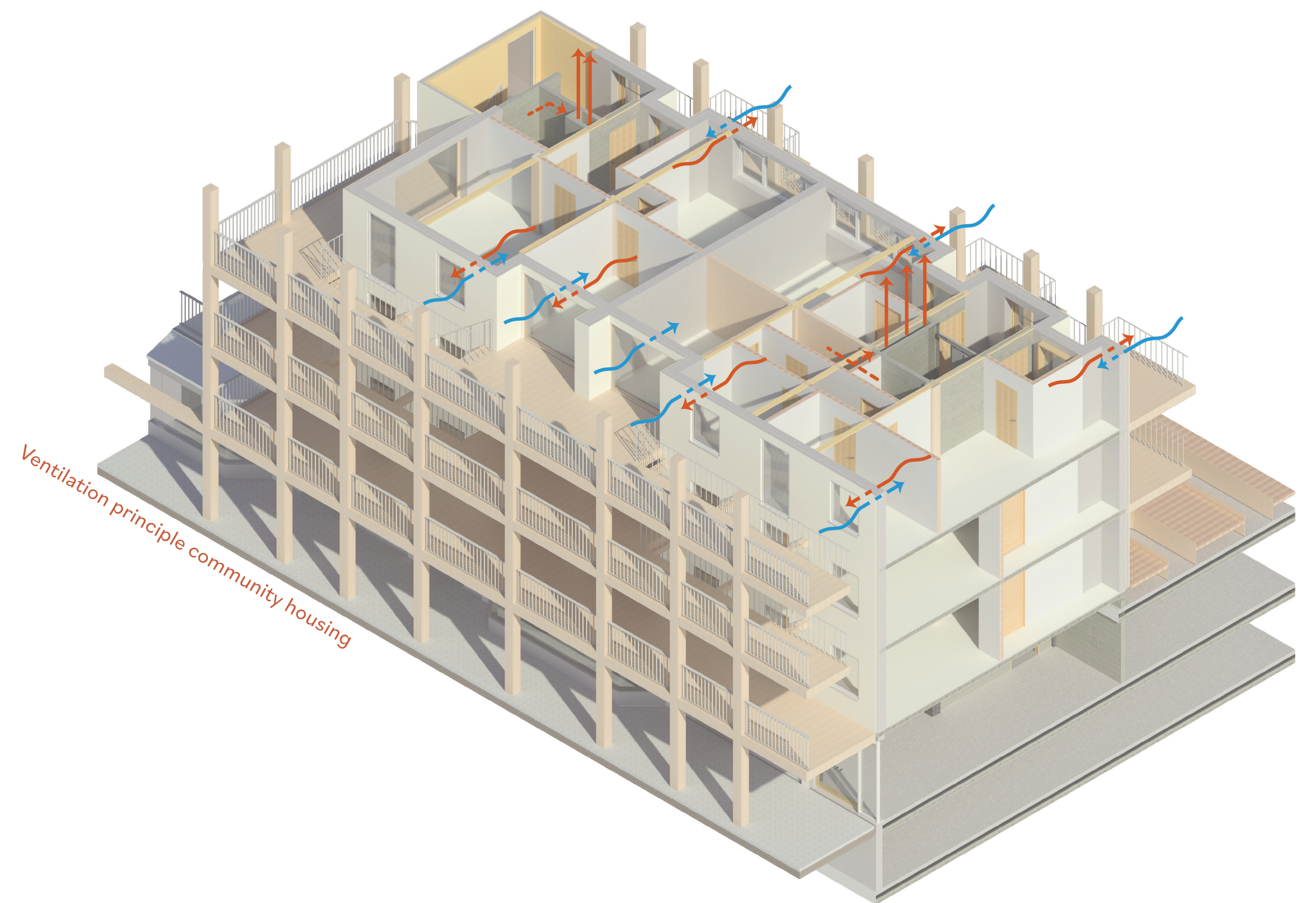
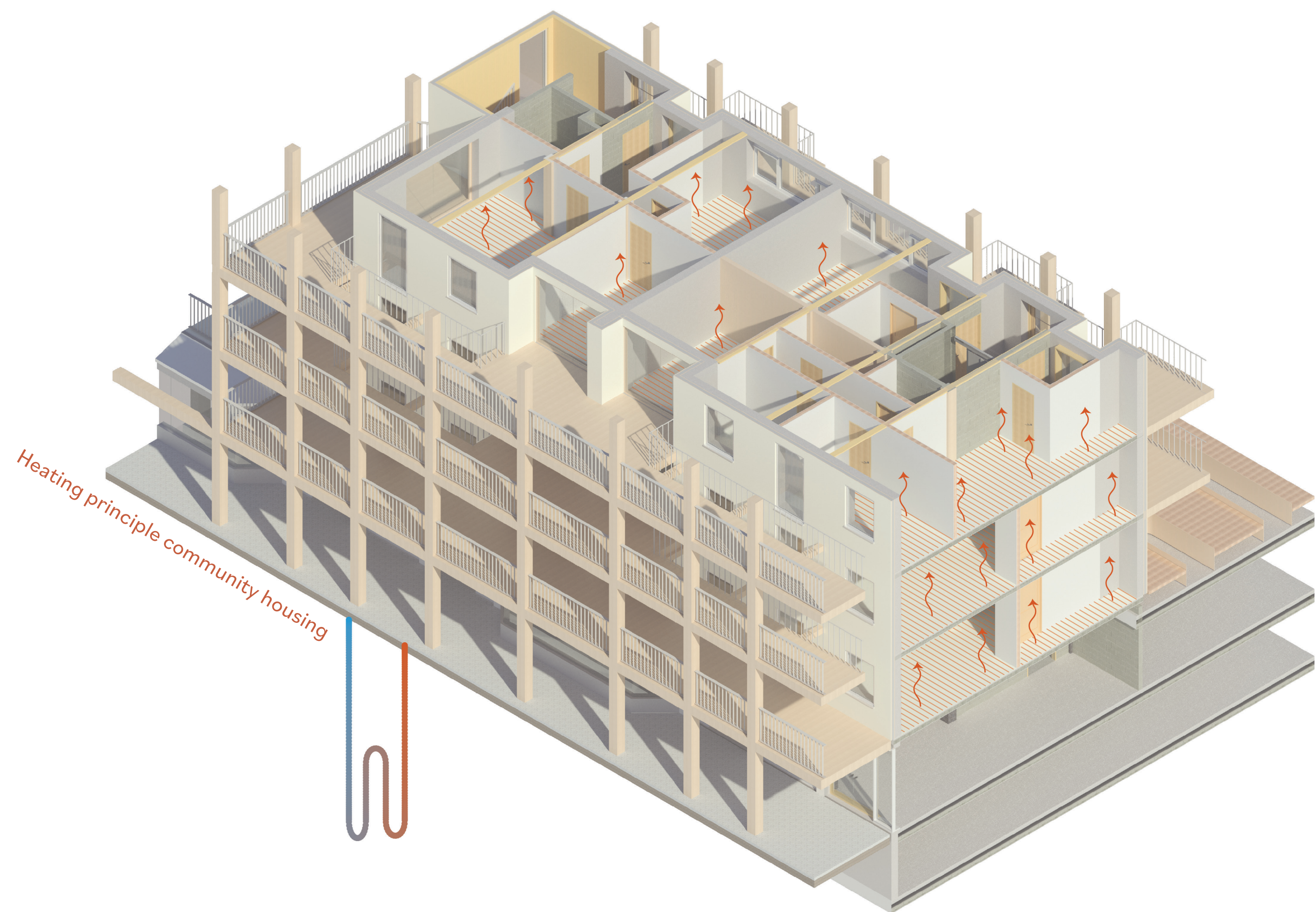


LEYWEG AS THE HEART OF THE COMMUNITY

1:20 FACADE ELEMENT

KRISTEN DELIS
AR3AH105 Graduation Studio
Adapting 20th Century Heritage



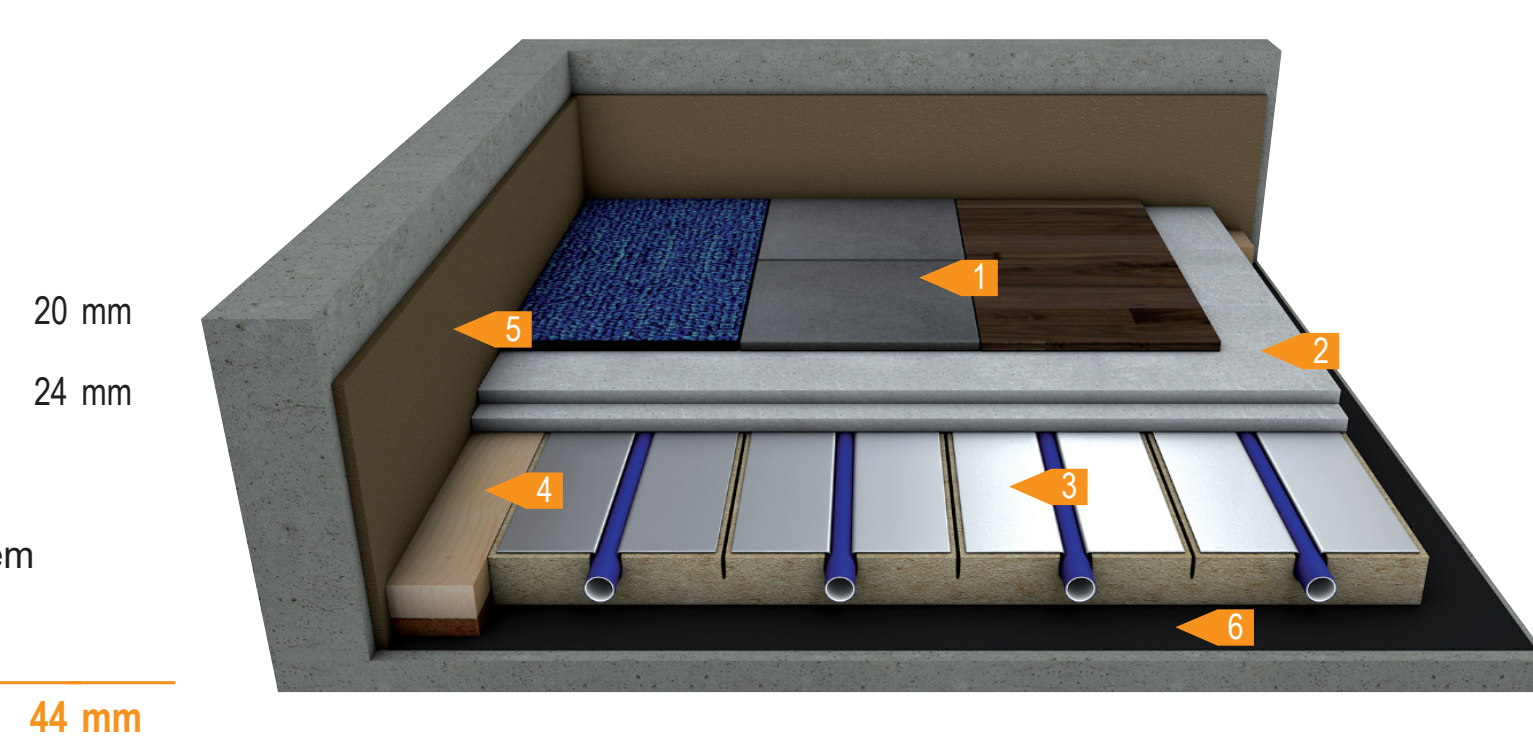


HEATING

Heating system; Jupiter
Modern floor heating



- 1 Carpet / Tiles / Parquet / Laminate / PVC
- 2 Dry construction system screed (Norit) 20 mm
- 3 Floor heating element ÖKO Plus + Jupite system pipe 24 mm
- 4 Optional: Edge wood(24mm)
- 5 Edge insulation Jupiter Dry construction system
- 6 Optional: Dampwerende laag

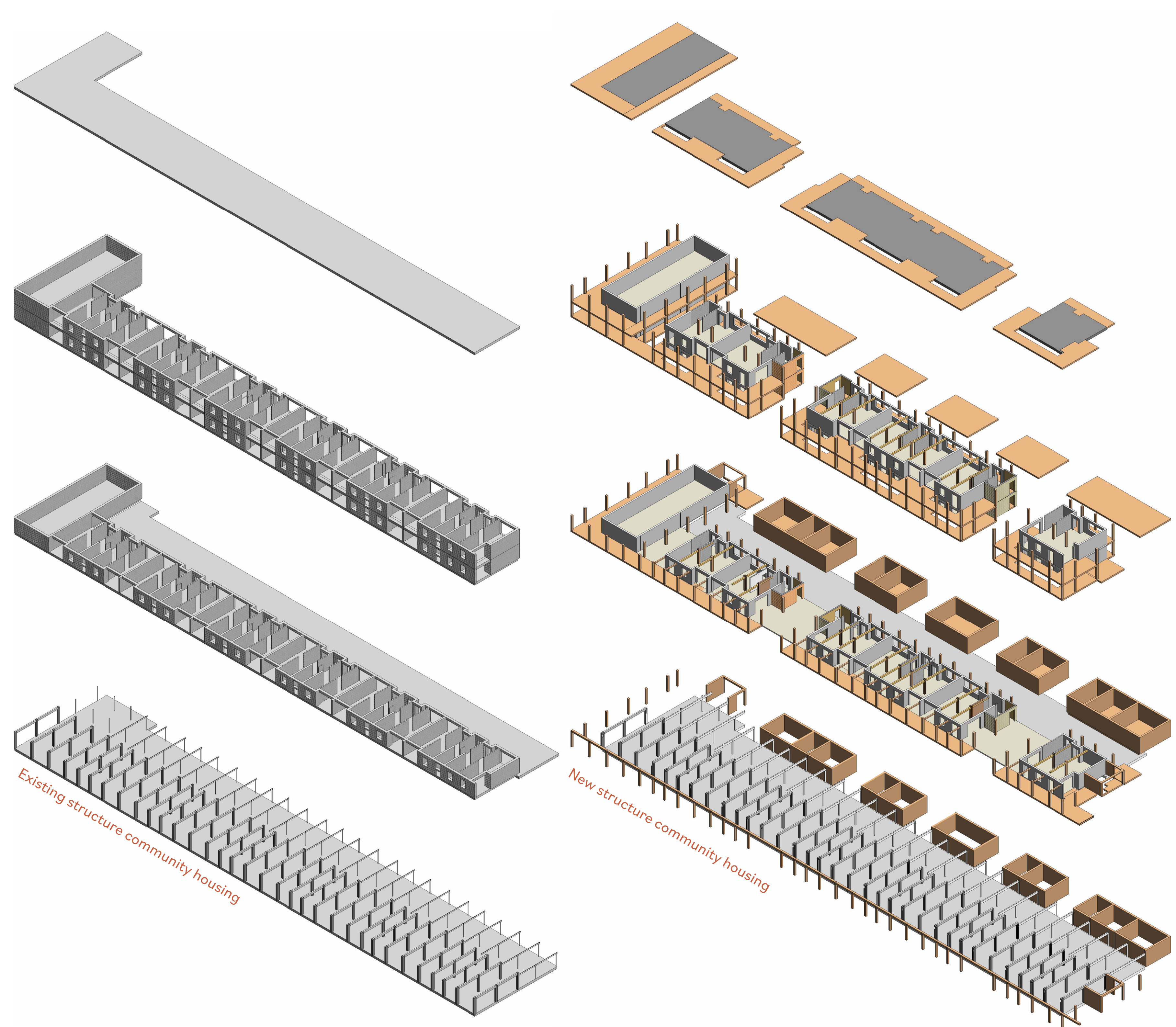
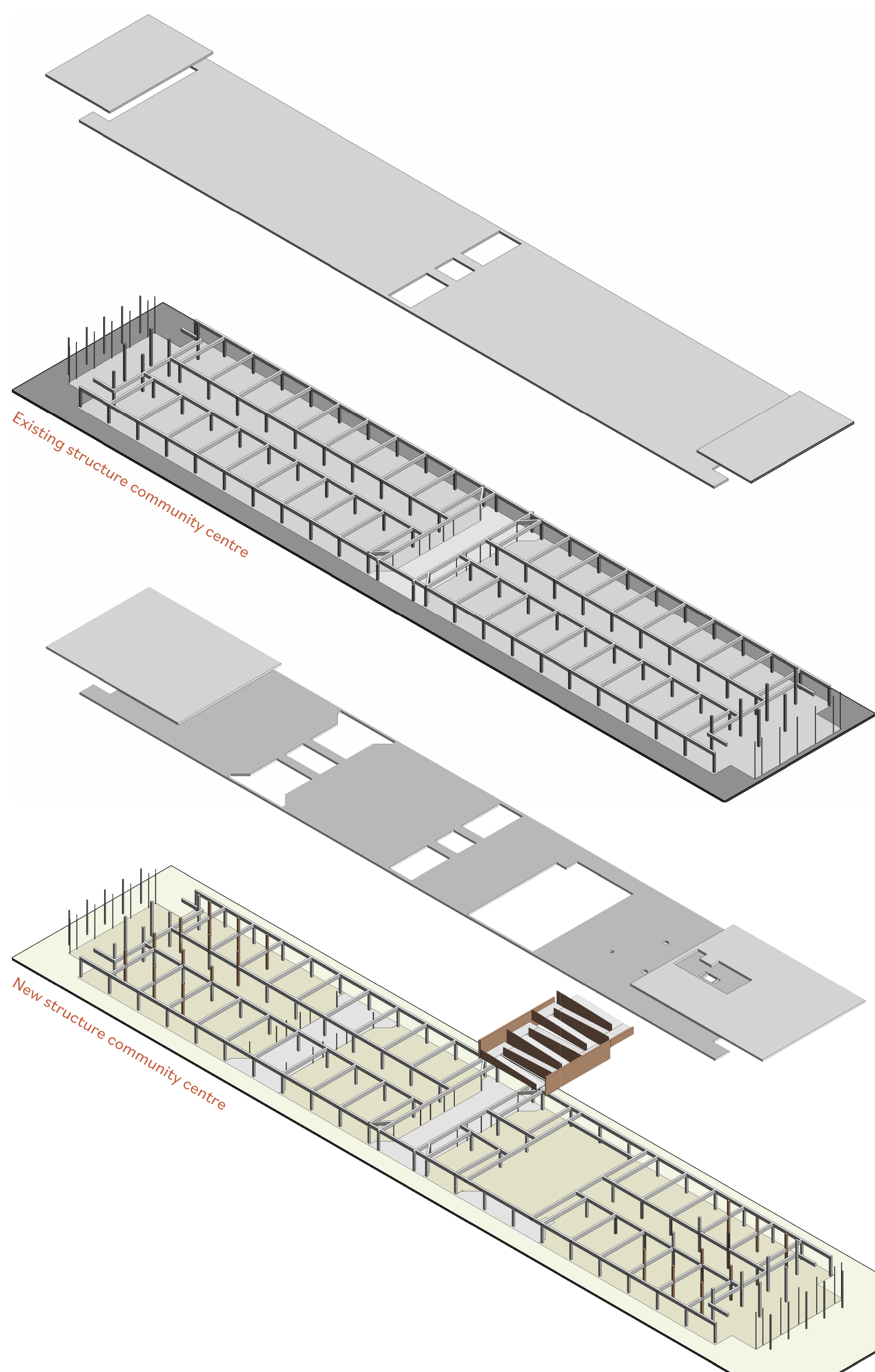
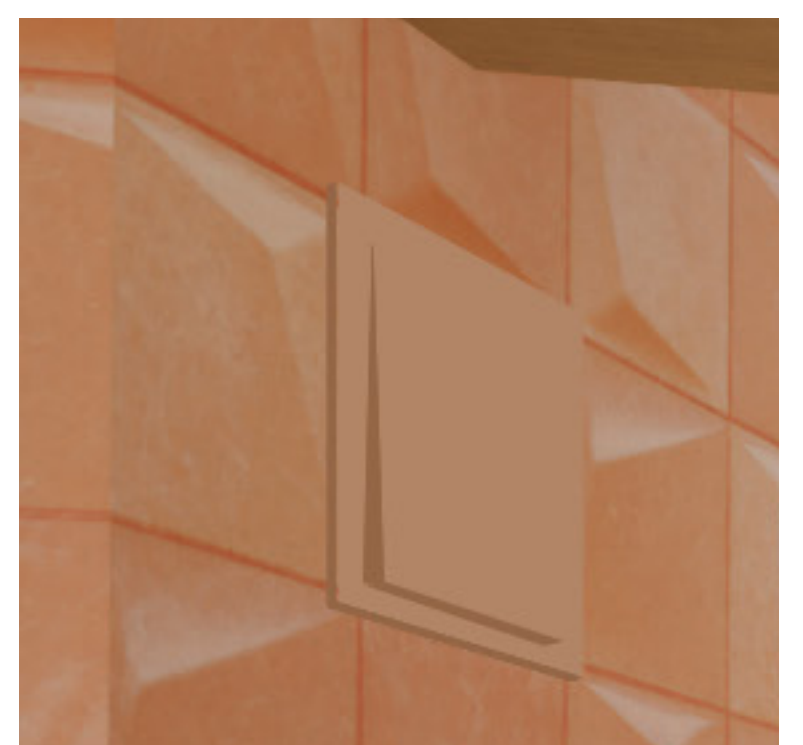
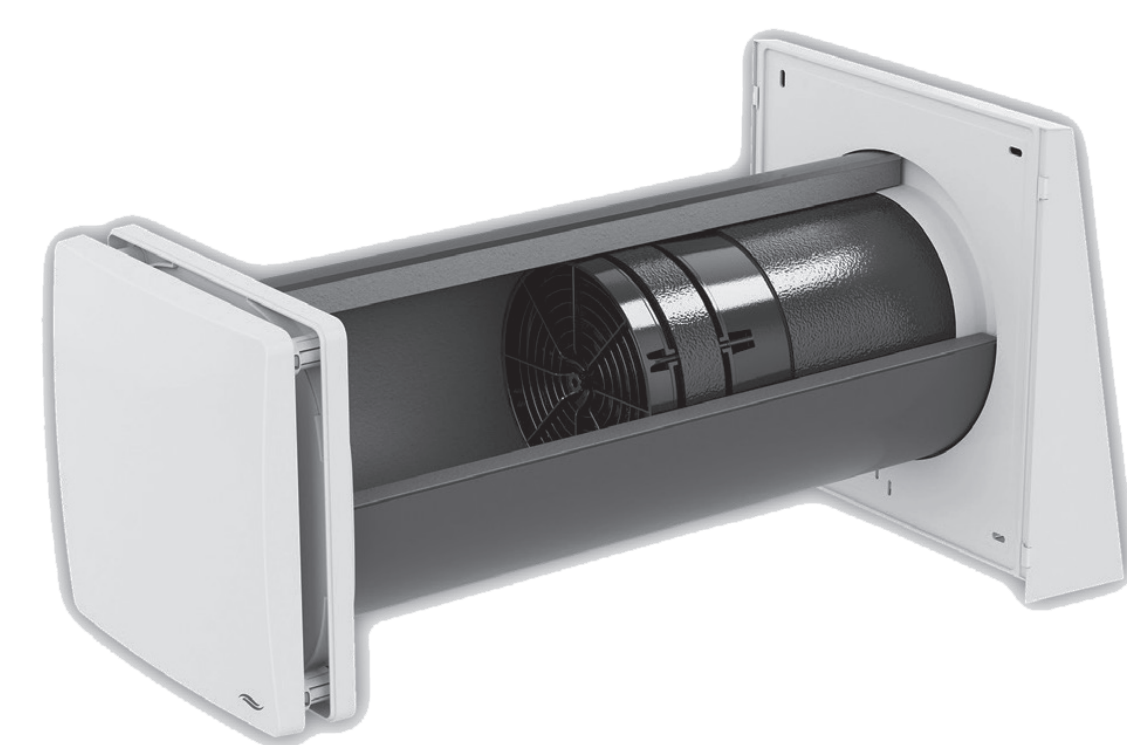


This floor heating system is a thin and dry construction system, which is perfect for renovations projects with a low ceiling height. This floor system will be connected to a ground source heat pump.

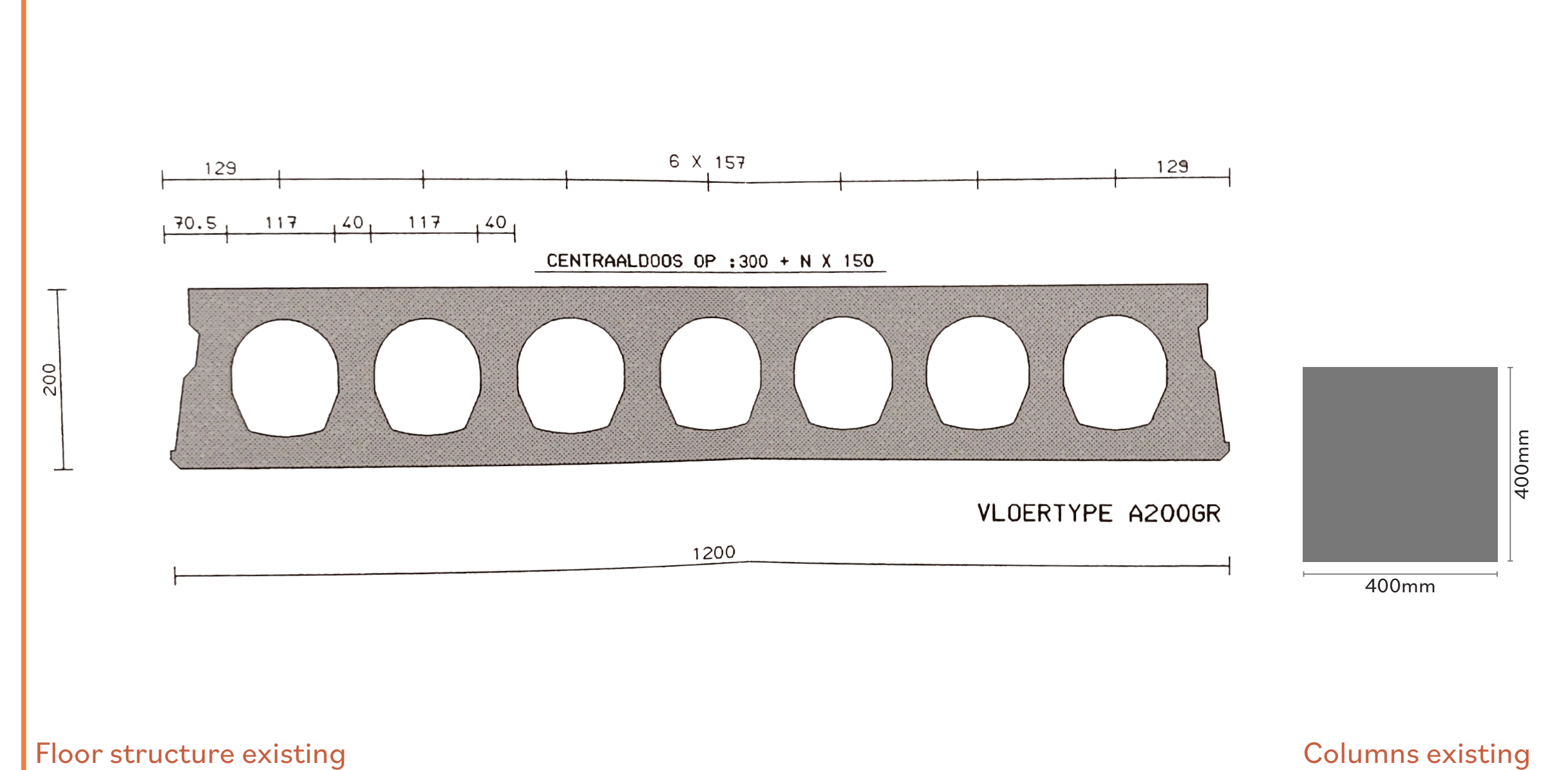
VENTILATION

Ventilation system; Technea IV14-ZERO.

'The iV14-Zero is a decentralised ventilation system with heat recovery. This unit features patented noise reduction. This makes it very suitable for bedrooms and rooms adjacent to busy roads. With the iV14-Zero, you can also do passive cooling. With summer night cooling, you can recover around 65% cold during night ventilation.'



STRUCTURE COMMUNITY CENTRE



STRUCTURE COMMUNITY HOUSING

