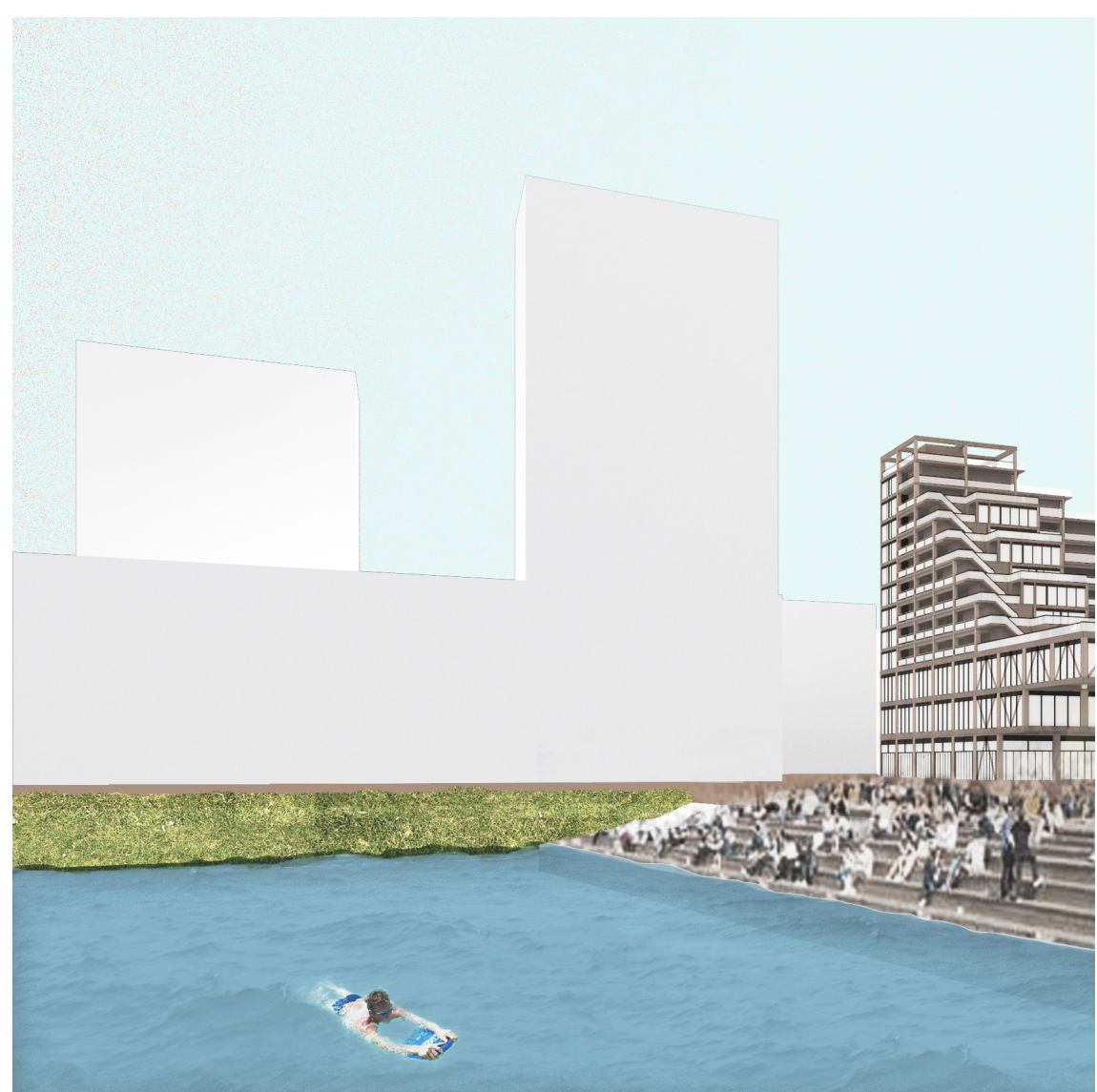
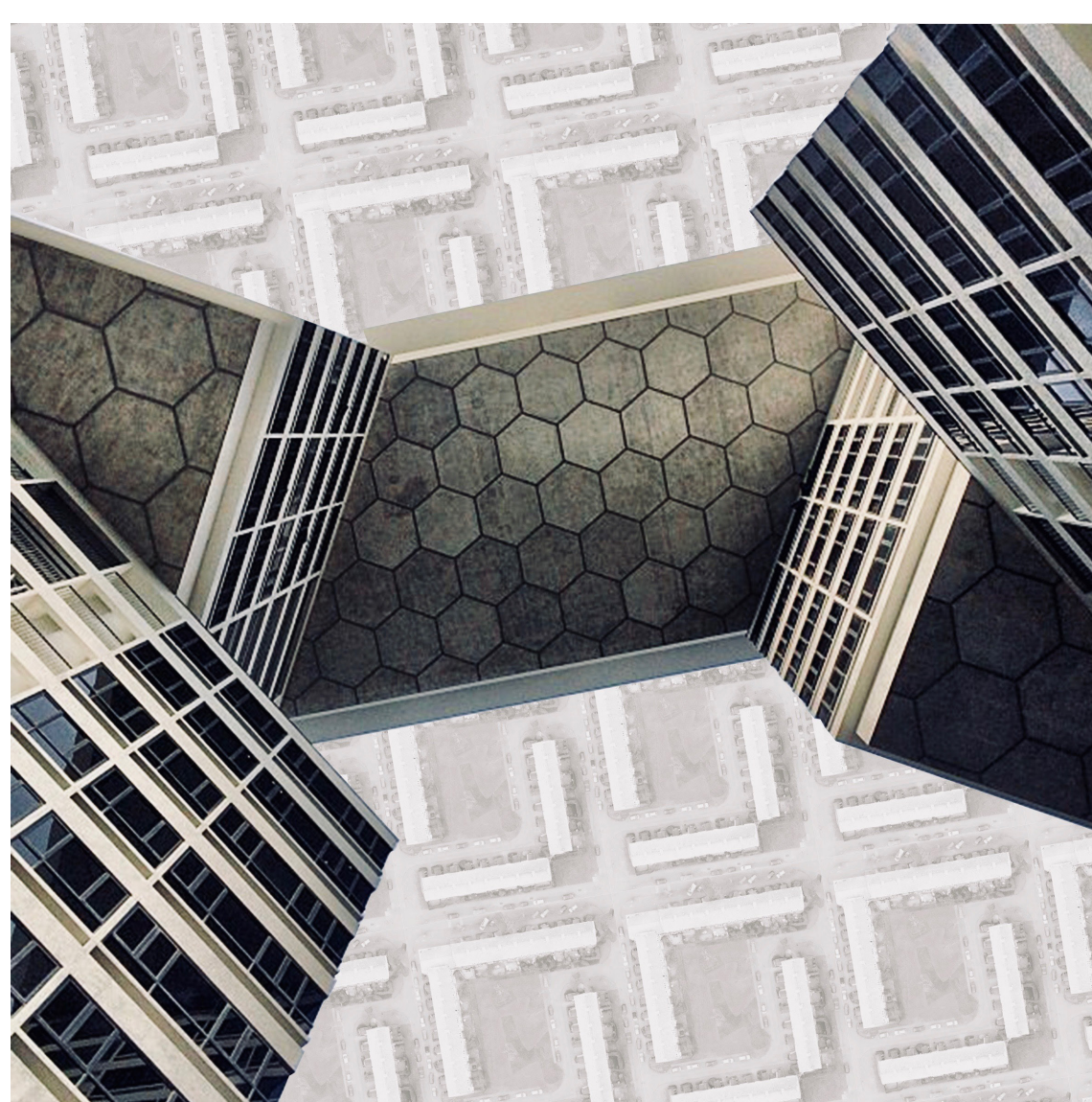
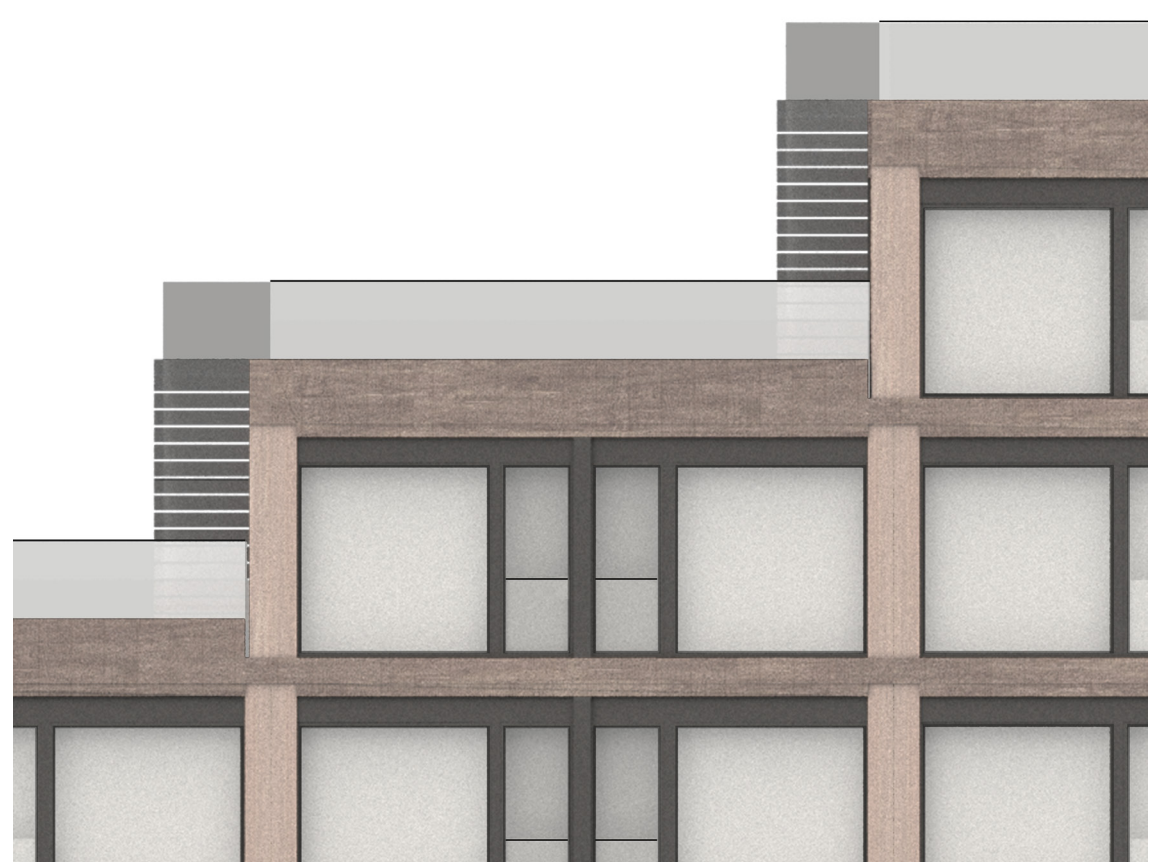


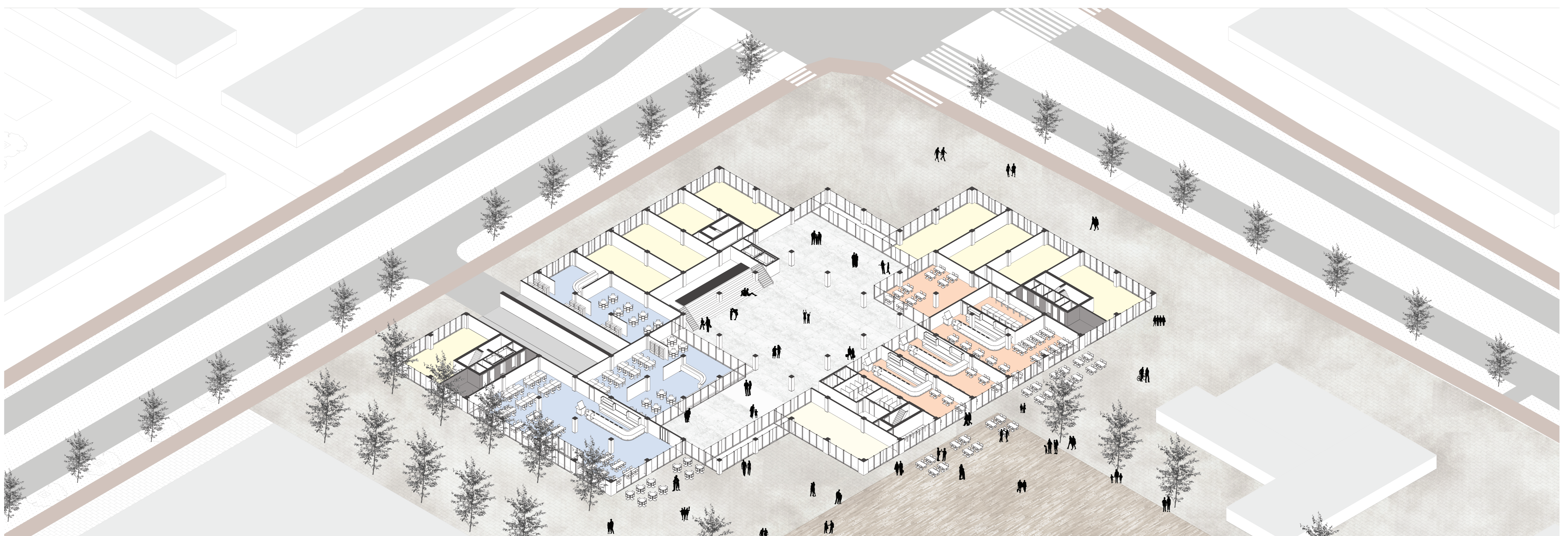
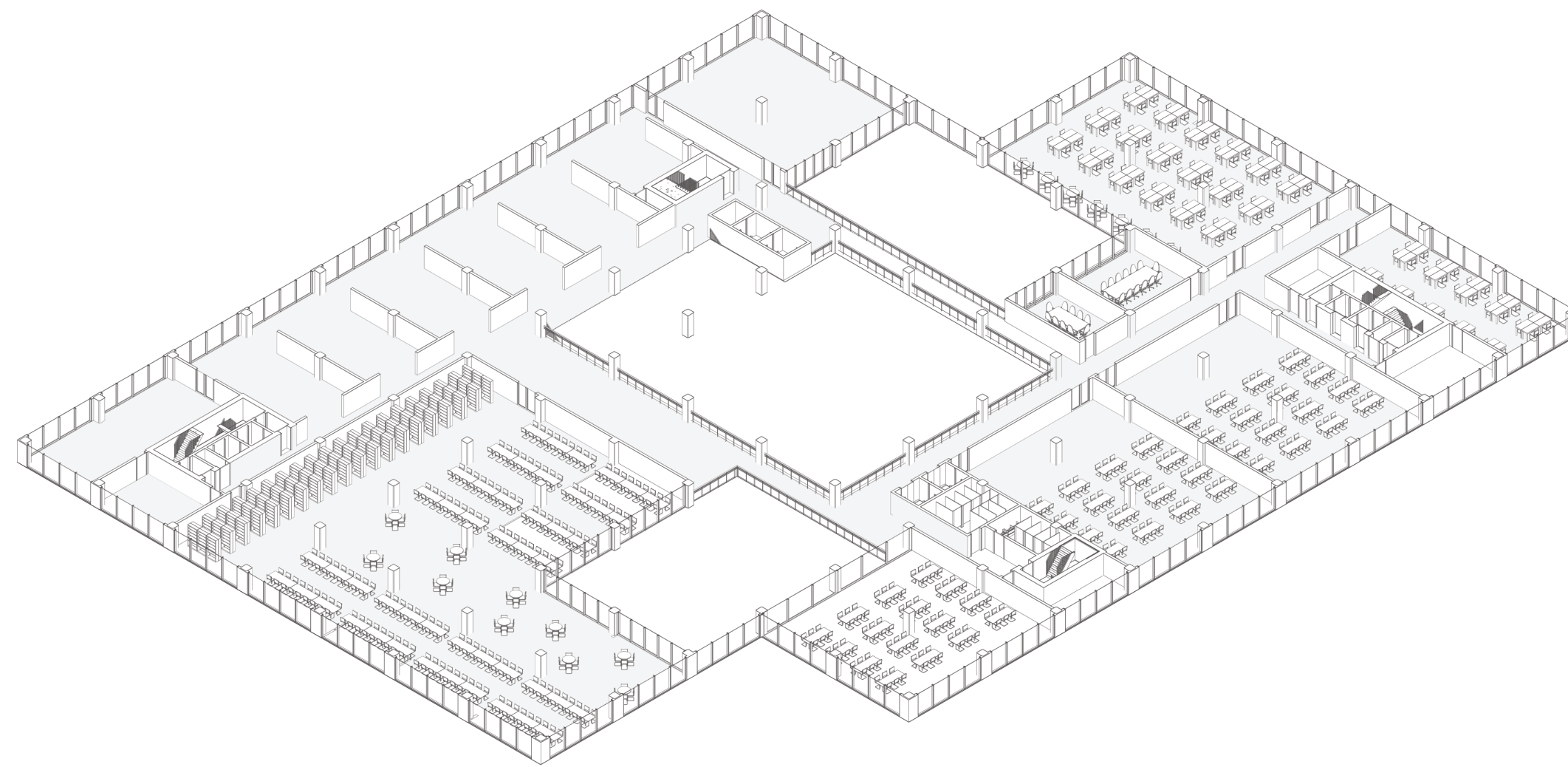
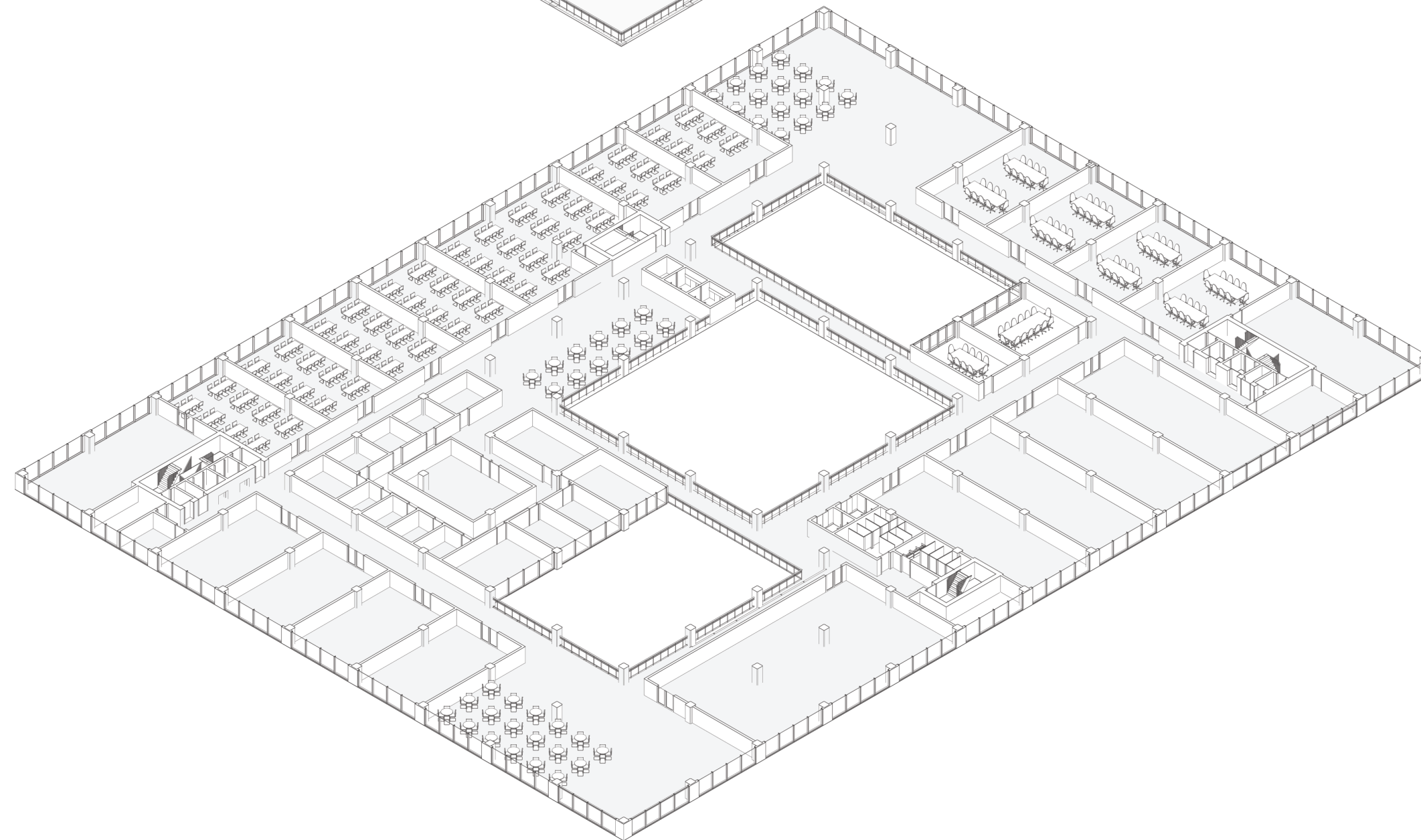
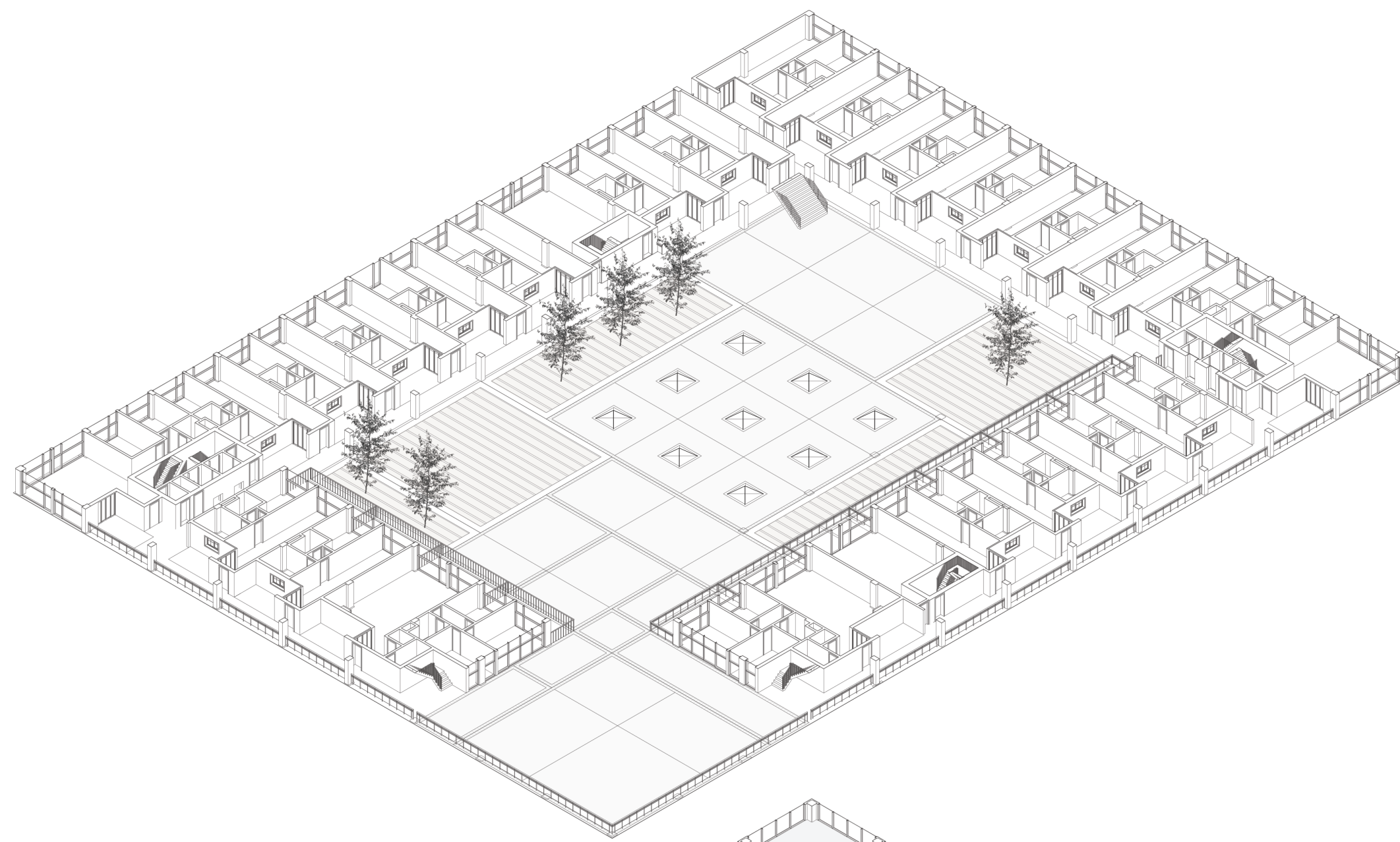
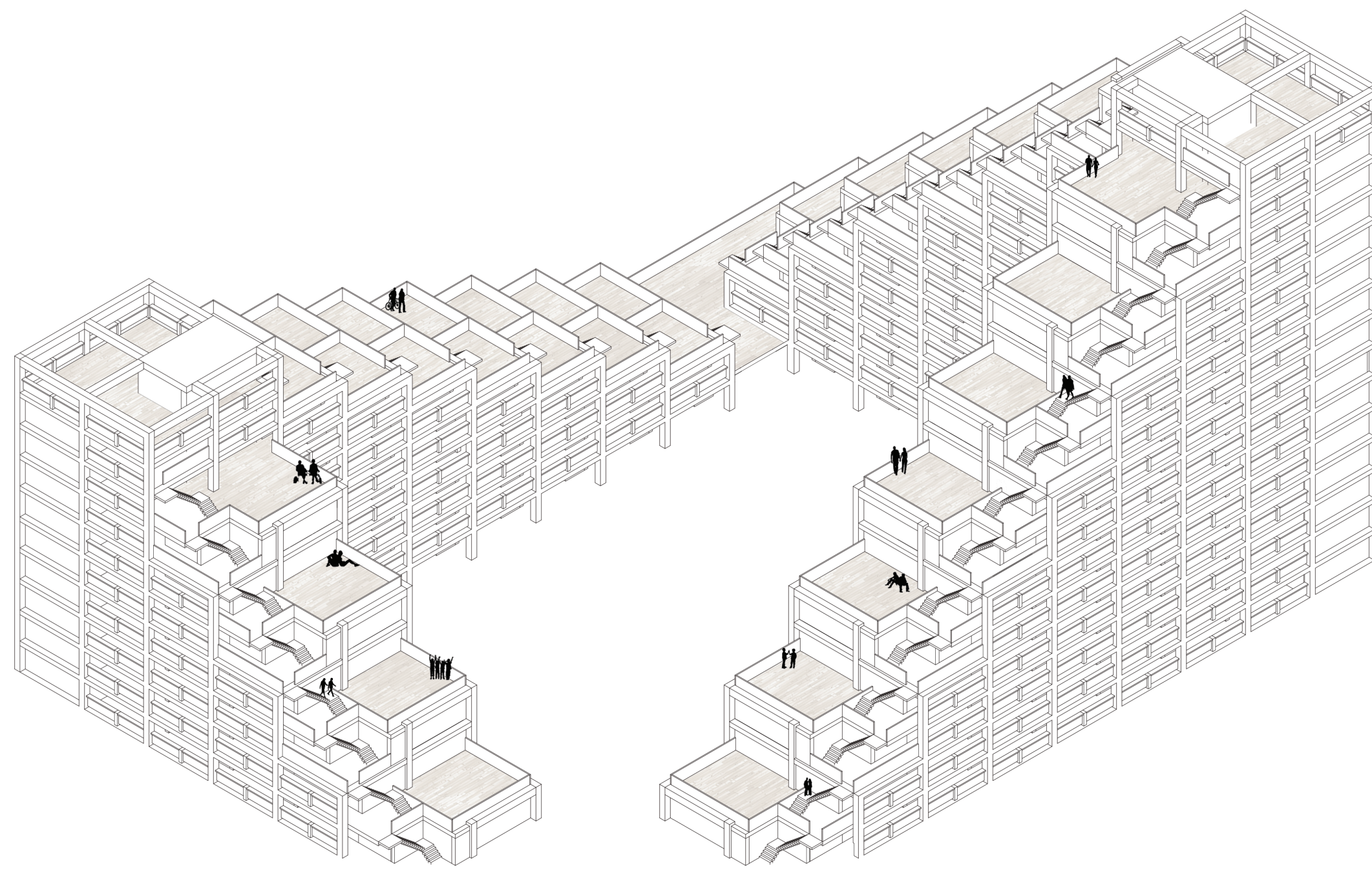
THE STAMP CITY  
COMMUNITY COMPLEX  
CHUNXU



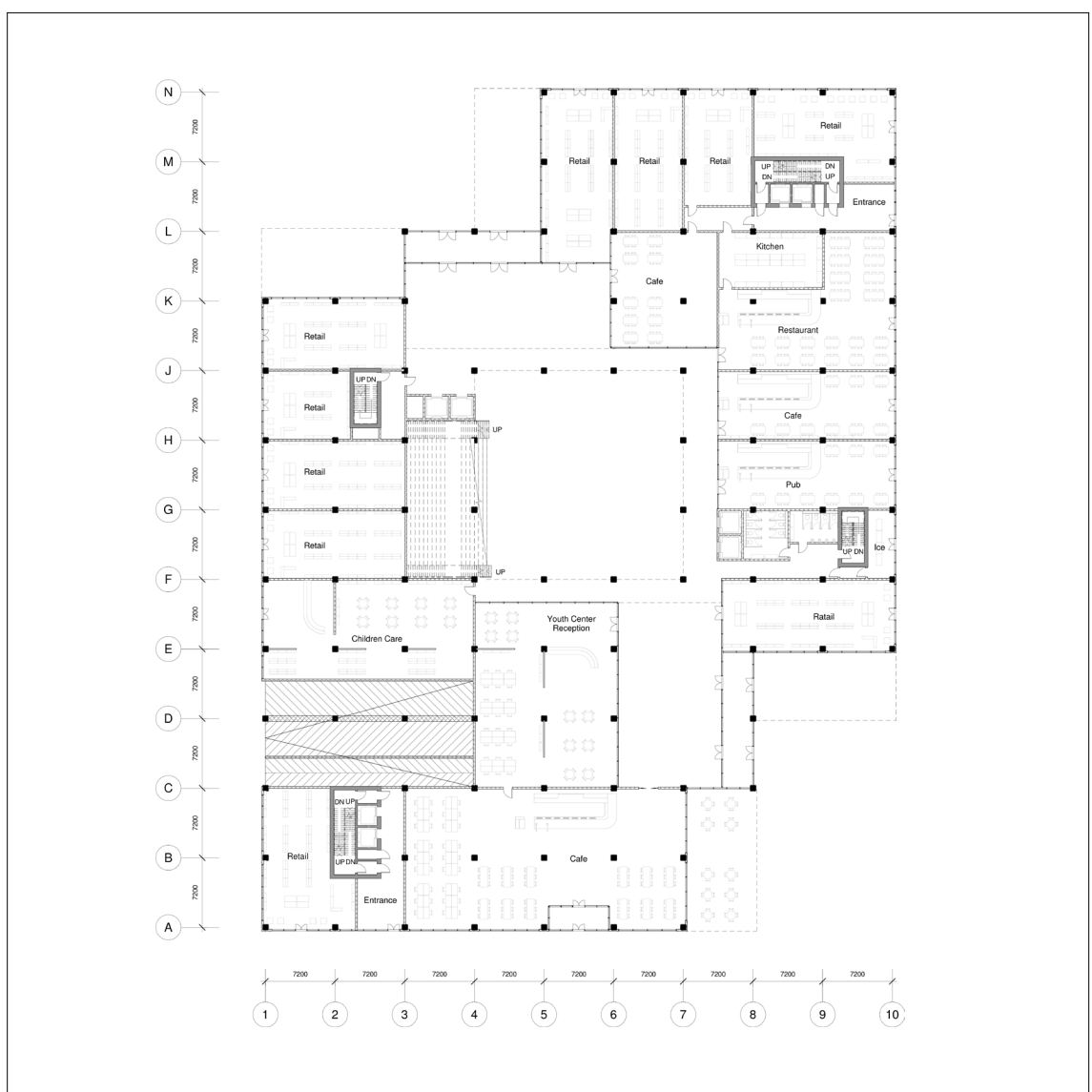
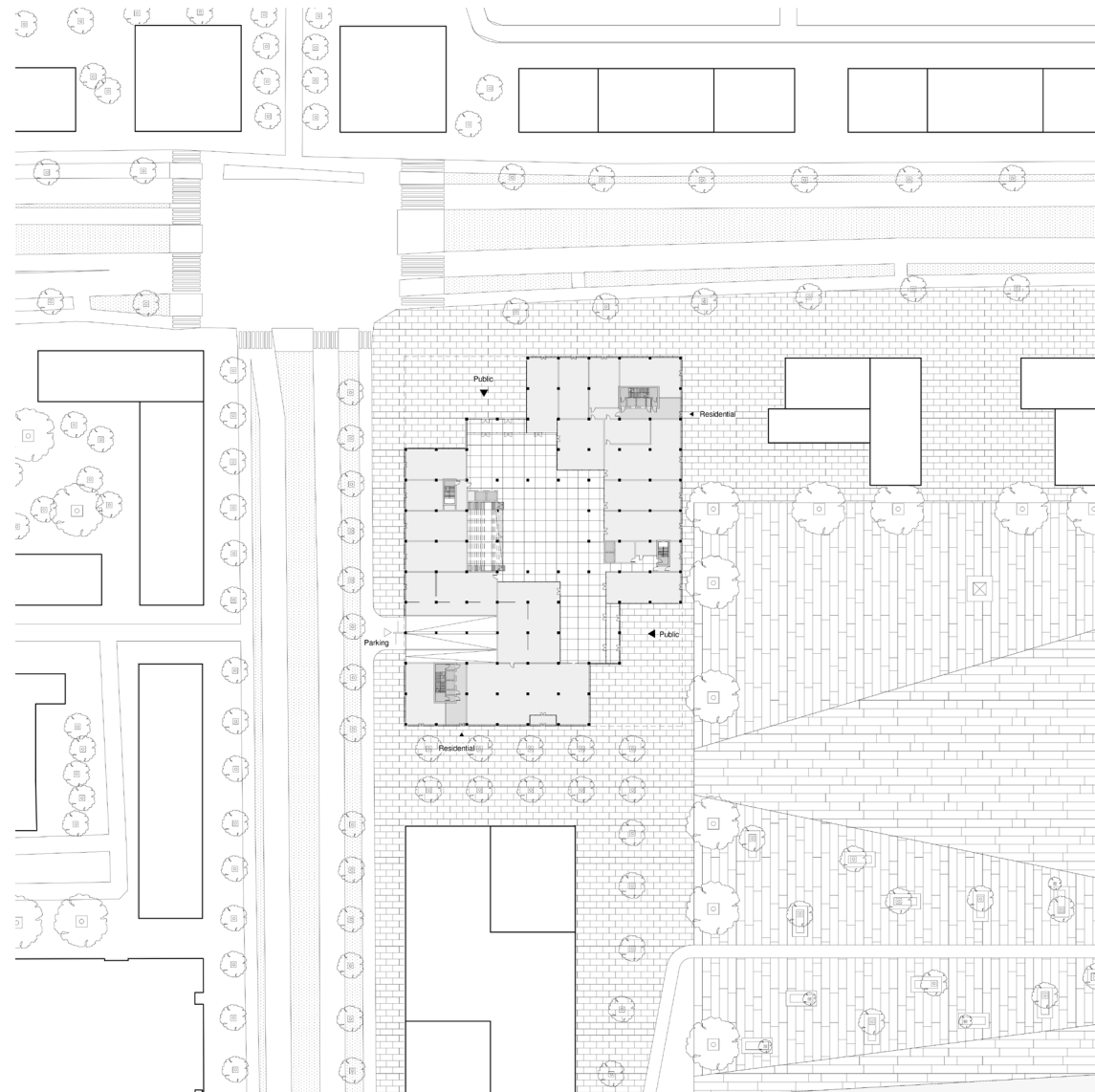
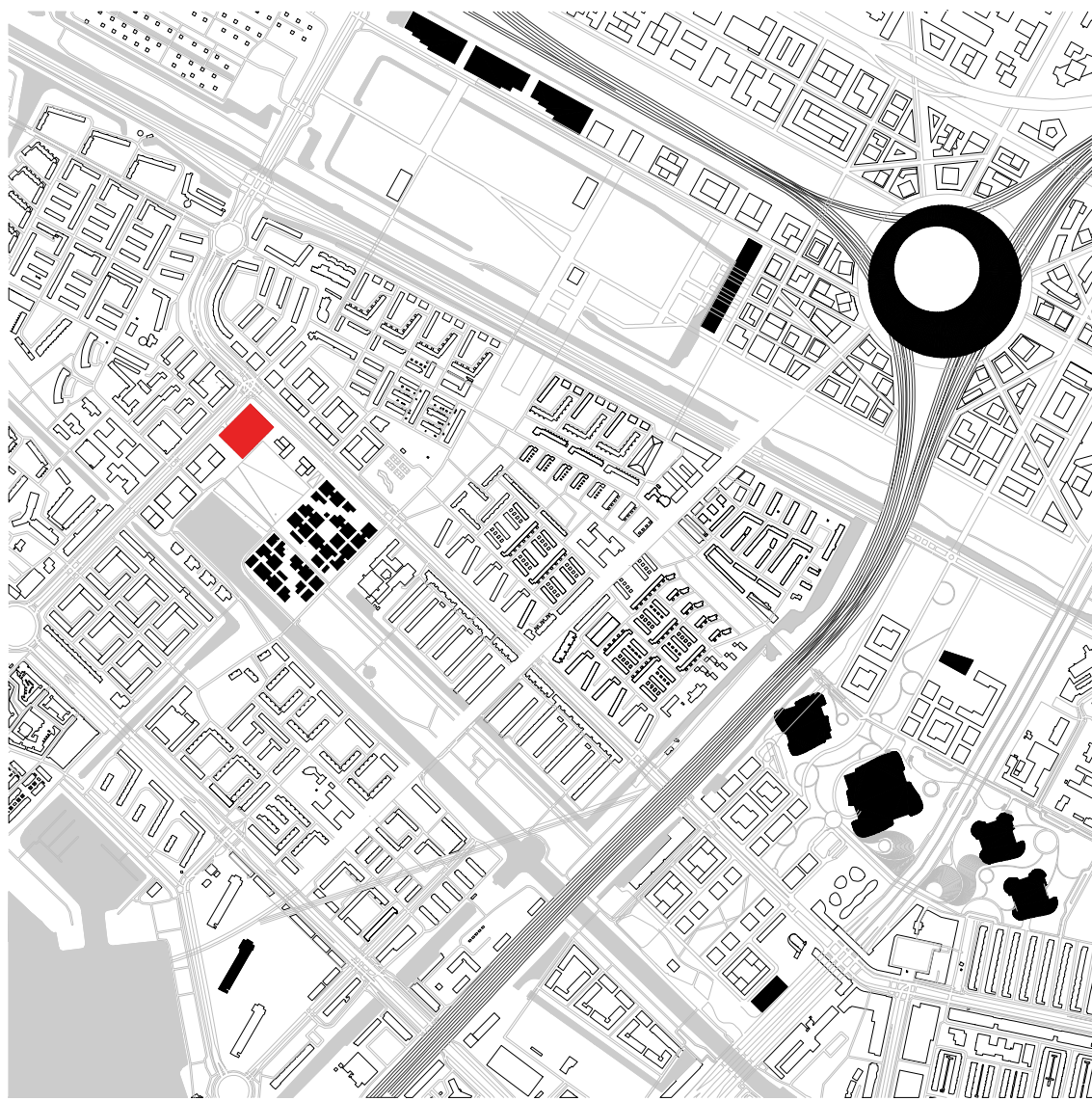




THE STAMP CITY  
COMMUNITY COMPLEX  
CHUNXU JIN







T H E S T A M P C I T Y  
C O M M U N I T Y C O M P L E X

C H U N X U J I N  
2 0 1 7 / 2 0 1 8

HOUSING BOOMED DURING 1950S-60S IN NEW-WEST. A TYPE OF URBAN BLOCK WAS DEVELOPED AND REPETITIVELY ACCOMPLISHED IN THIS SUBURBAN AMSTERDAM. DIFFERENT FROM THE TRADITIONAL URBAN BLOCK, THIS DOUBLE L-SHAPED BLOCK OPENS ITSELF TO THE URBAN STREET. THIS KIND OF URBAN BLOCK COULD BE CONSIDERED AS A TYPOLOGY, REPRESENTING THAT SPECIAL PERIOD. HOWEVER, THE DISORDERED RELATIONSHIP BETWEEN PRIVATE AND PUBLIC MAKE THE LIFE HERE AMBIGUOUS. THE PROJECT IS AN ATTEMPT, WHICH DERIVES FROM THE EXISTING URBAN BLOCK, BUT WITH MORE RICH PROGRAM, INCLUDING COMMERCIAL FUNCTION, YOUTH CENTRE AND MIXED-OWNERSHIP HOUSING. IT SPLIT THE URBAN ACCESS AND COMMUNAL SPACE BY MAKE THEM DIFFERENT LAYERS, TO RETURN THE HIERARCHY OF DIFFERENT SPACE. IT PROVIDES A POTENTIAL VERSION OF RENOVATE URBAN LEGACY.

THE MAIN GOAL OF THIS PROJECT IS TO RENOVATE THE EXISTING AND REPETITIVE URBAN BLOCK, AND MAKE IT SUCCESSFUL AND ADAPTIVE TO THE CURRENT SITUATION AND COMING FUTURE. THE URBAN BLOCK COULD MORE THAN A HOUSING BLOCK. WITH THE TENDING OF DENSIFICATION, THERE WILL BE A MORE COMPELLABLE URBAN BLOCK TO ENRICH THE LIFE OF THE CITIZENS. IN THE MEANTIME, TO MIX THE LIVING, COMMERCIAL AND PUBLIC FUNCTIONS WITHIN ONE BLOCK/BUILDING, COULD STIMULATE THE URBAN LIFE. THE PROJECT IS RECTANGULAR, SHAPING THE URBAN CENTRE AT THE CORNER. IT OFFERS A DIAGONAL URBAN ACCESS ON THE GROUND FLOOR, LEADING PEOPLE FROM THE STREET CORNER TO THE PLAZA INSIDE OF THE MAIN STREET.

