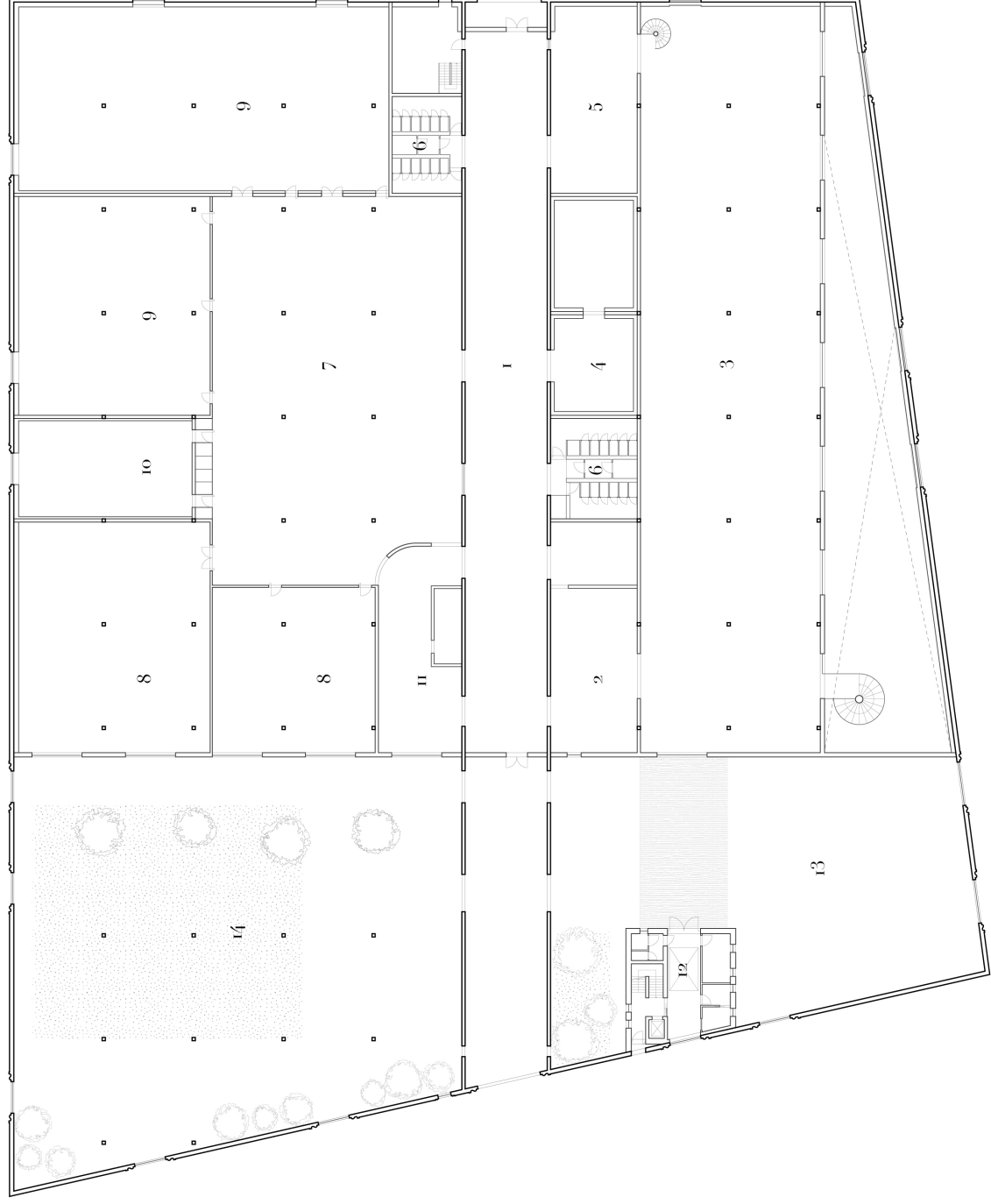


DESIGN & TECHNOLOGY

KATOEN NATIE FOUNDATION
textile museum & labs

on the threshold of the space

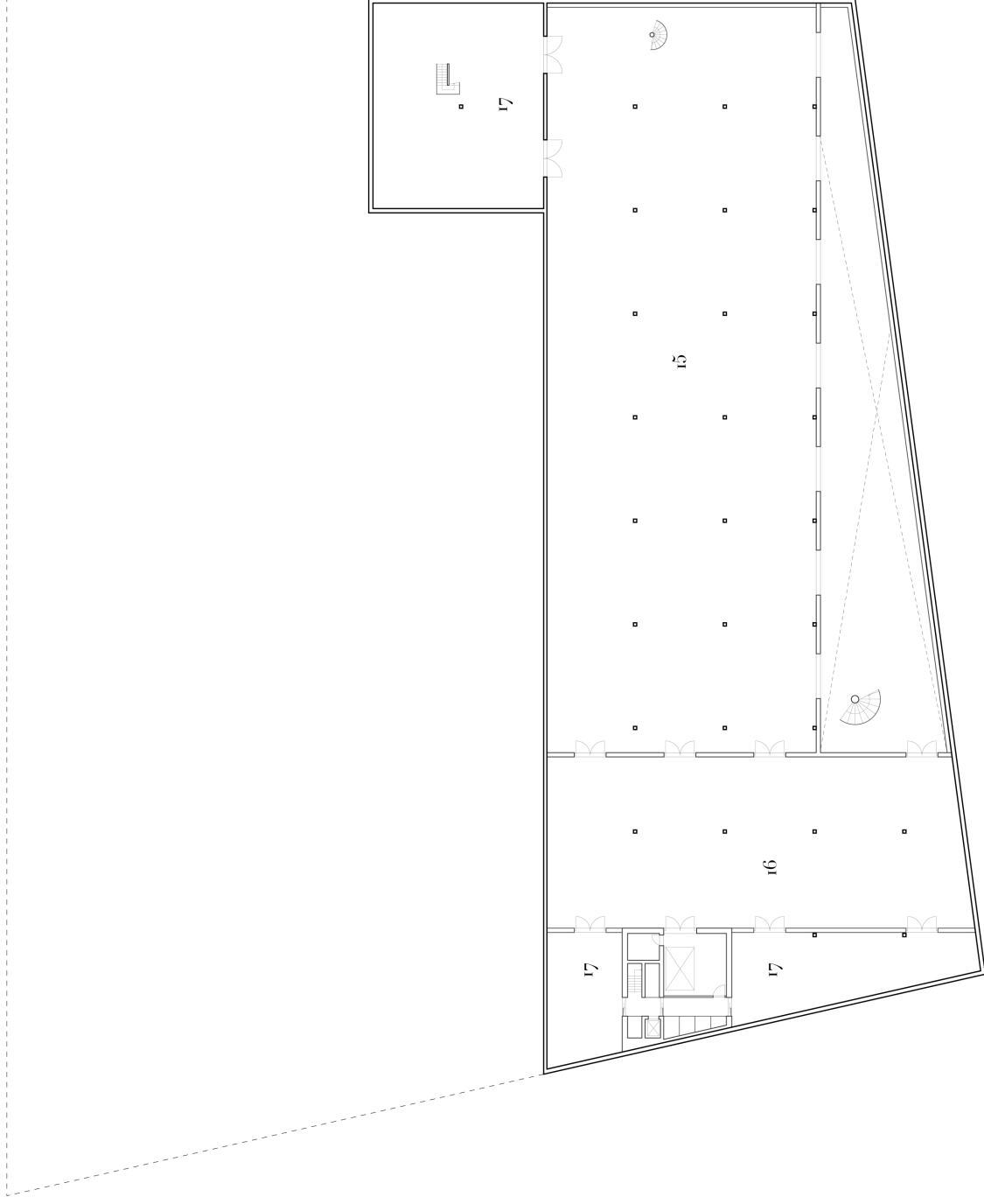
1. passage/foyer - public interior [525 sqm]
2. entrance area [176 sqm]
3. exhibition rooms [1180 sqm]
4. library [165 sqm]
5. textile/book shop [145 sqm]
6. restroom [135 sqm]
7. work plaza [800 sqm]
8. educational room [390 + 235 sqm]
9. textile lab [590 + 380 sqm]
10. auditorium [175 sqm]
11. café [150 sqm]
12. office/meeting room [70 x 4 || 280 sqm]
13. external expo space [700 sqm]
14. hortus conclusus [1500 sqm]

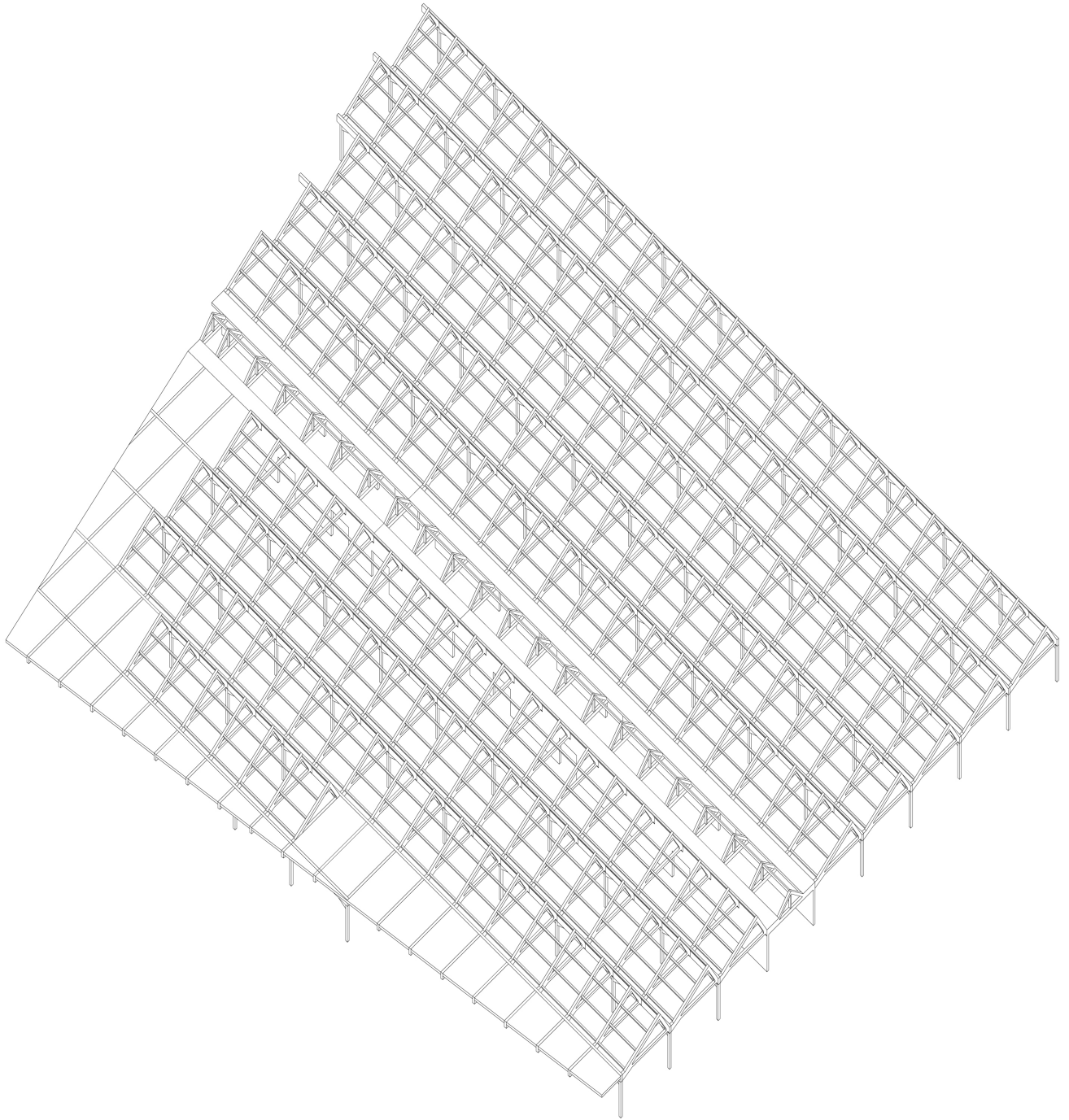


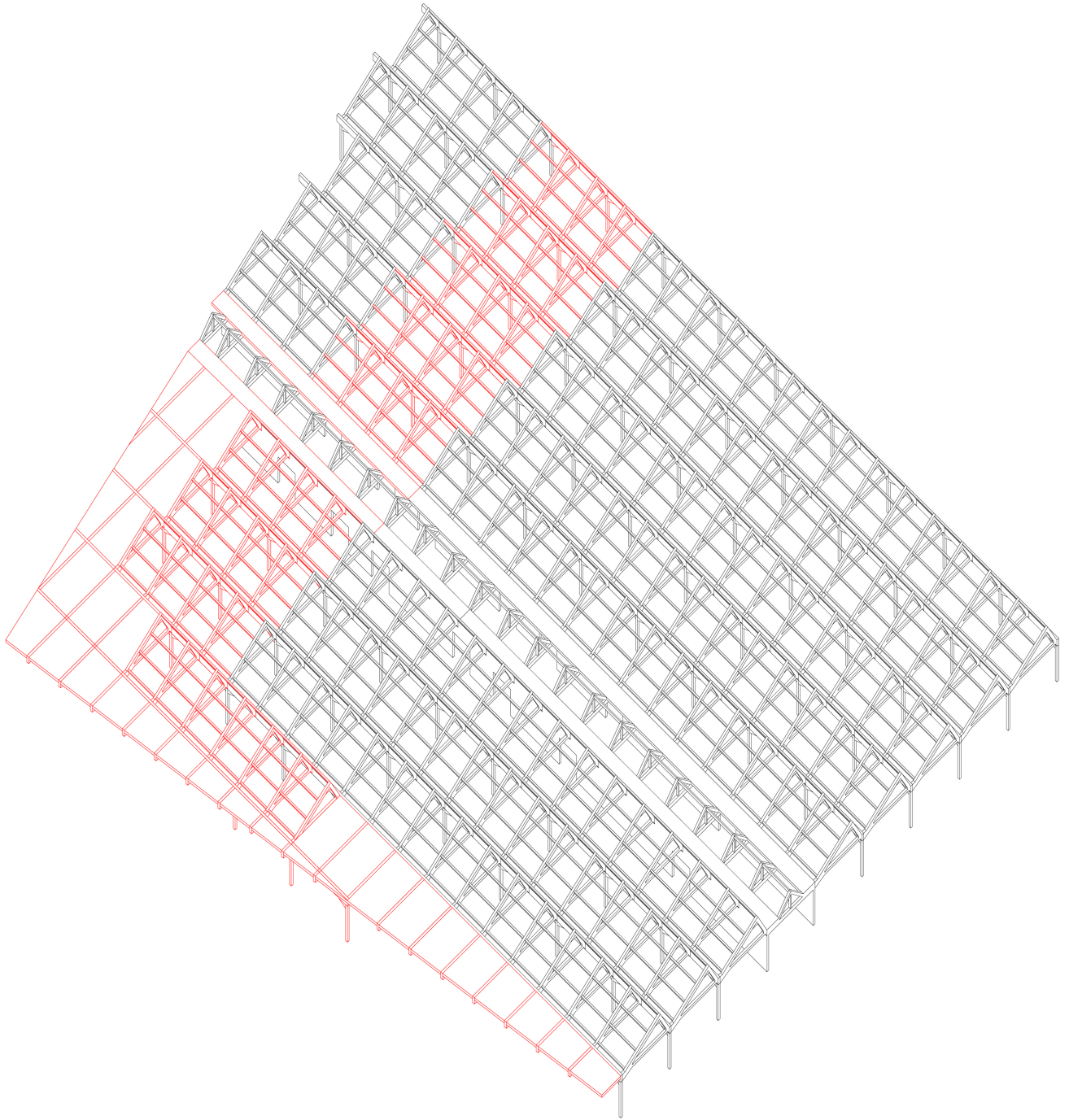
15. exhibition rooms [2300 sqm]

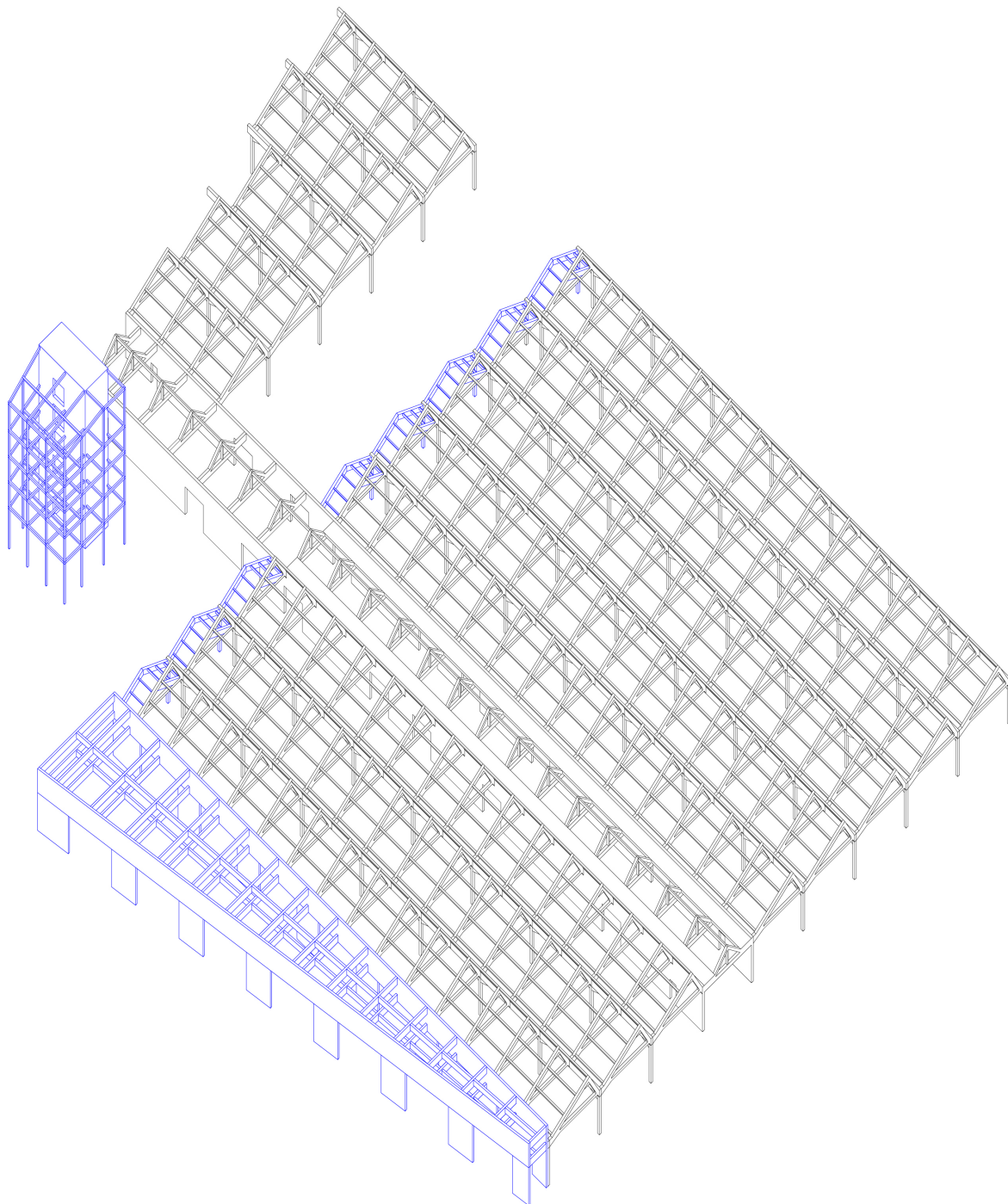
16. storage [645 sqm]

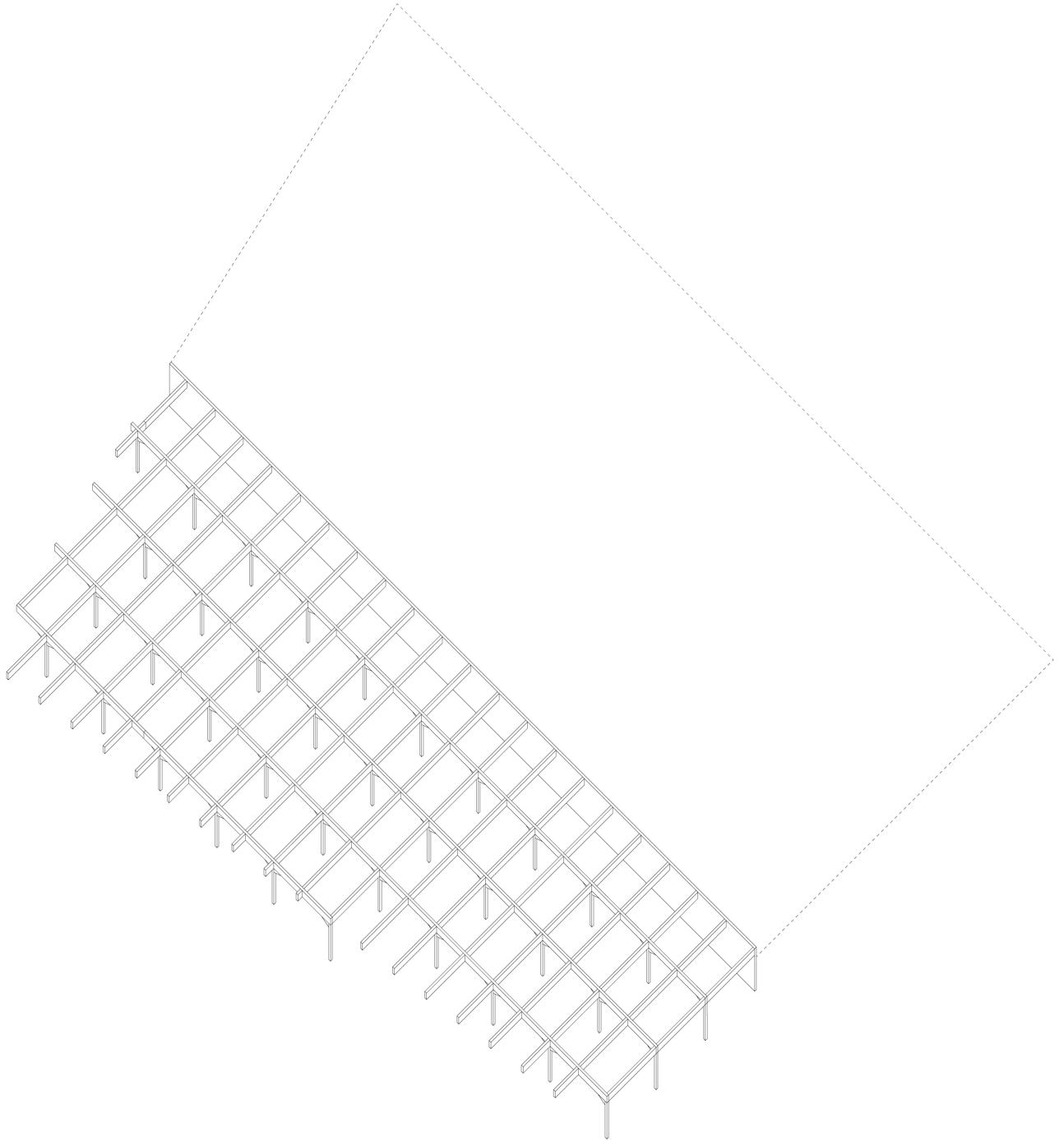
17. technical room [280 + 365 sqm]

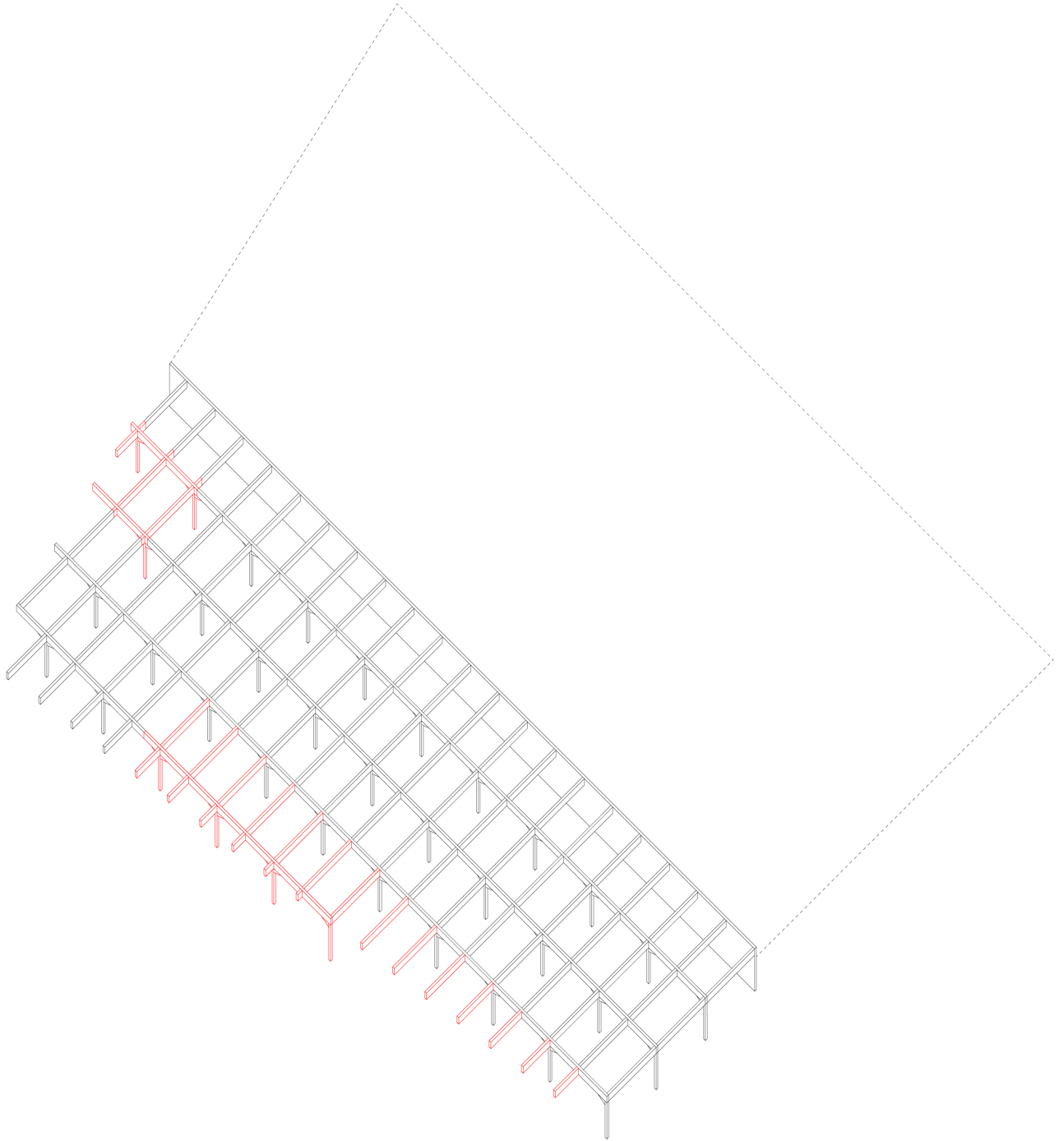


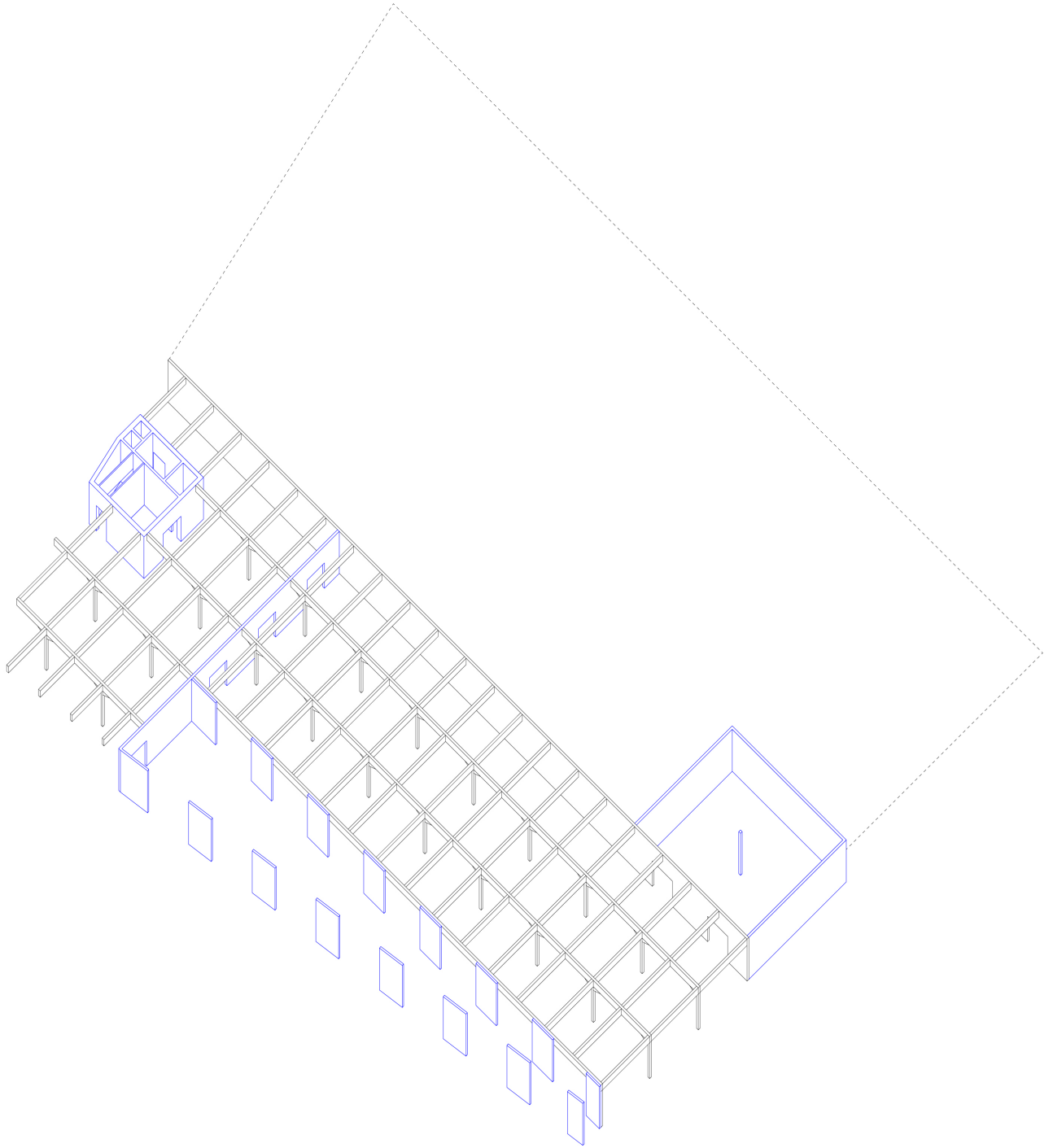


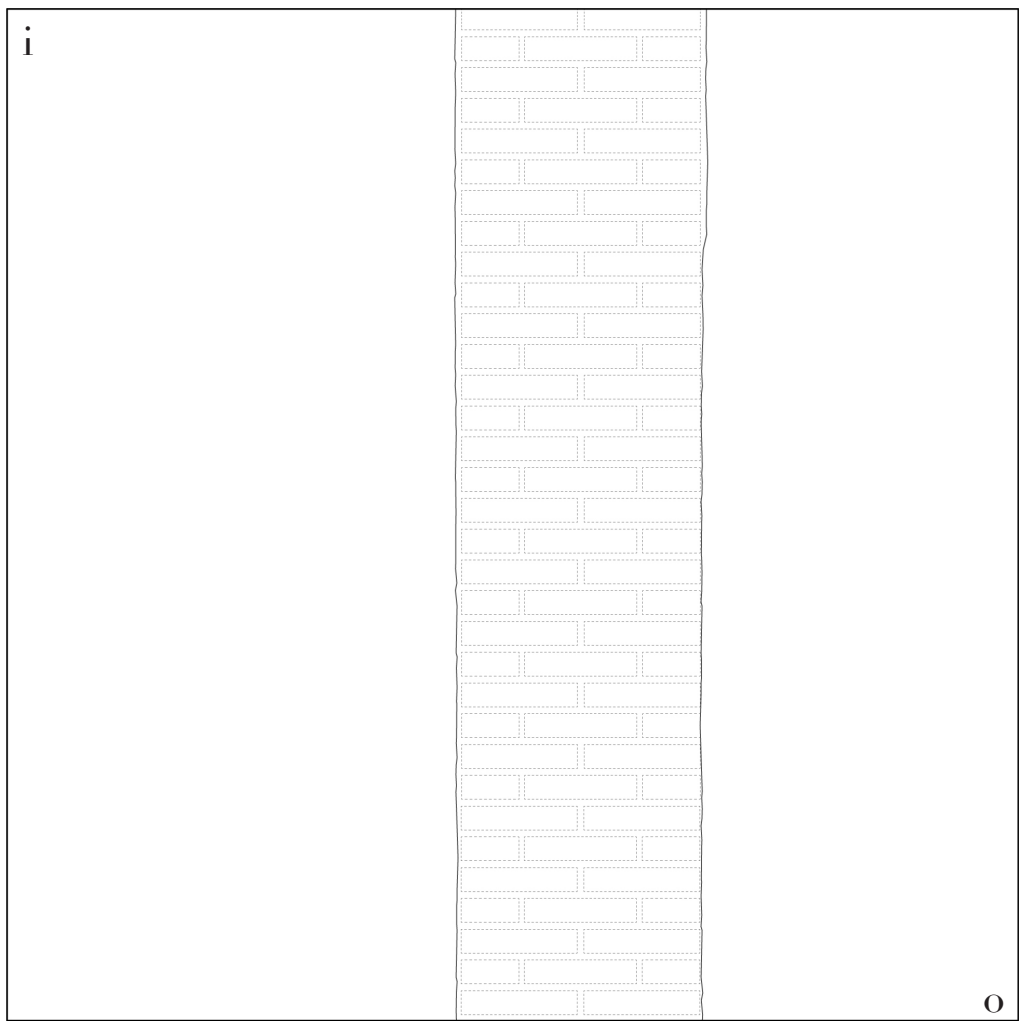




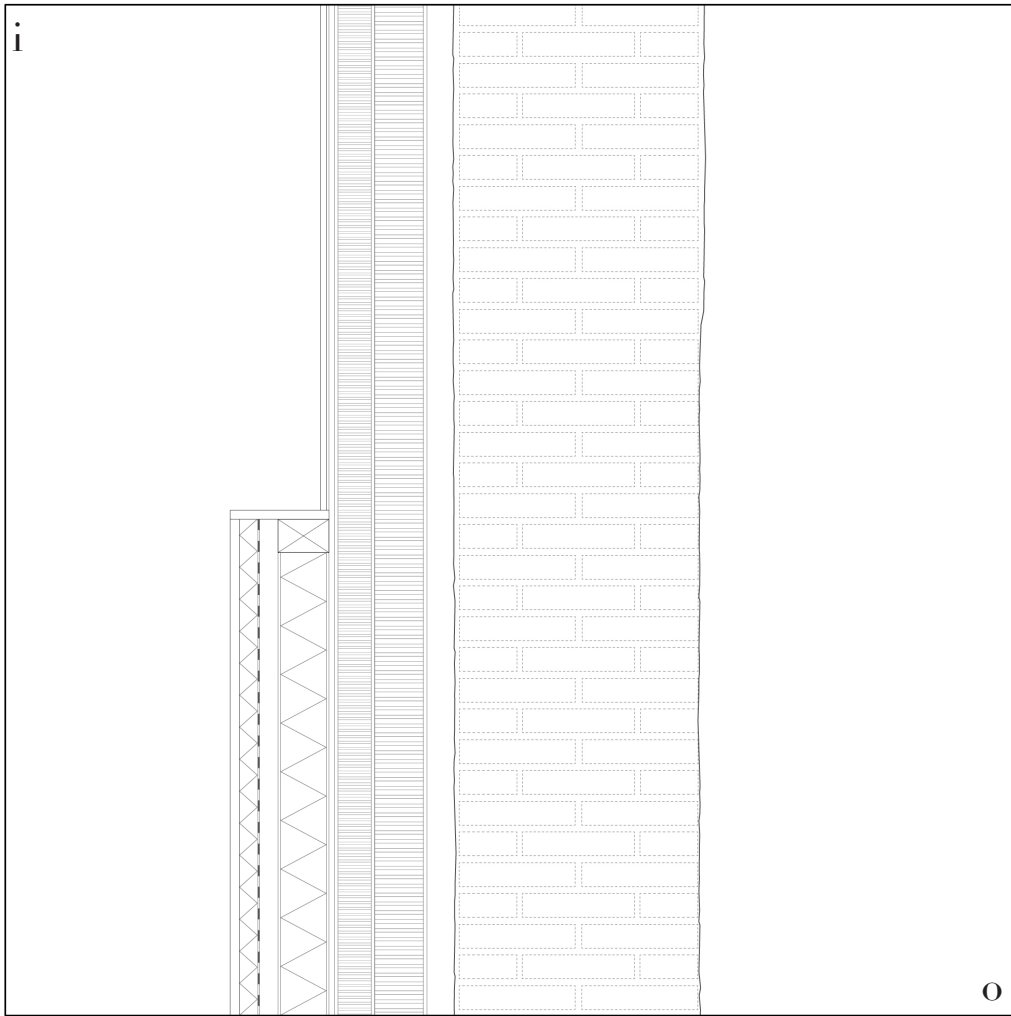




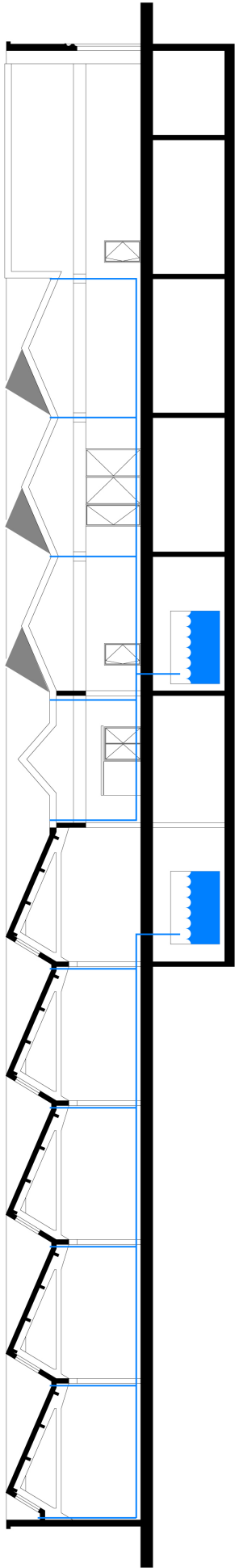


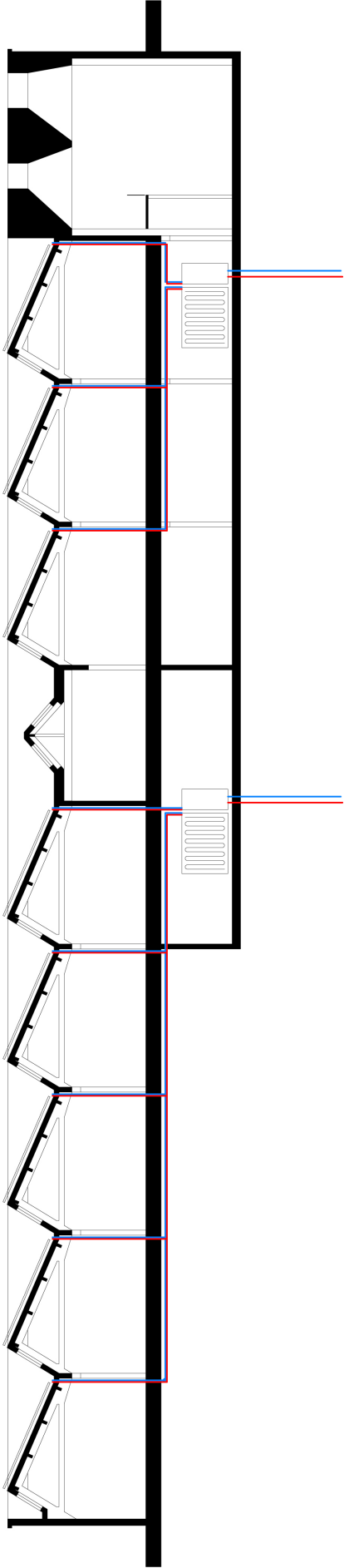


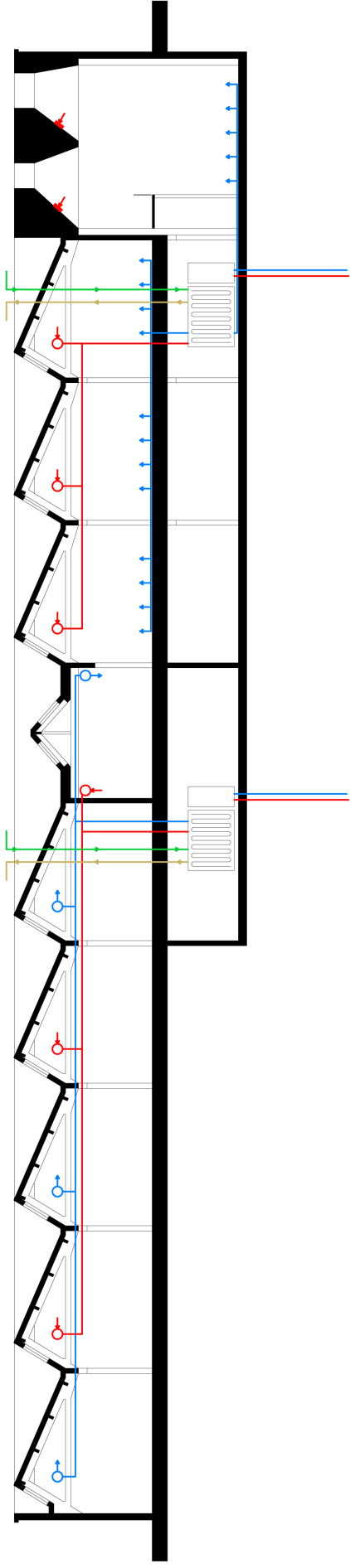
existing

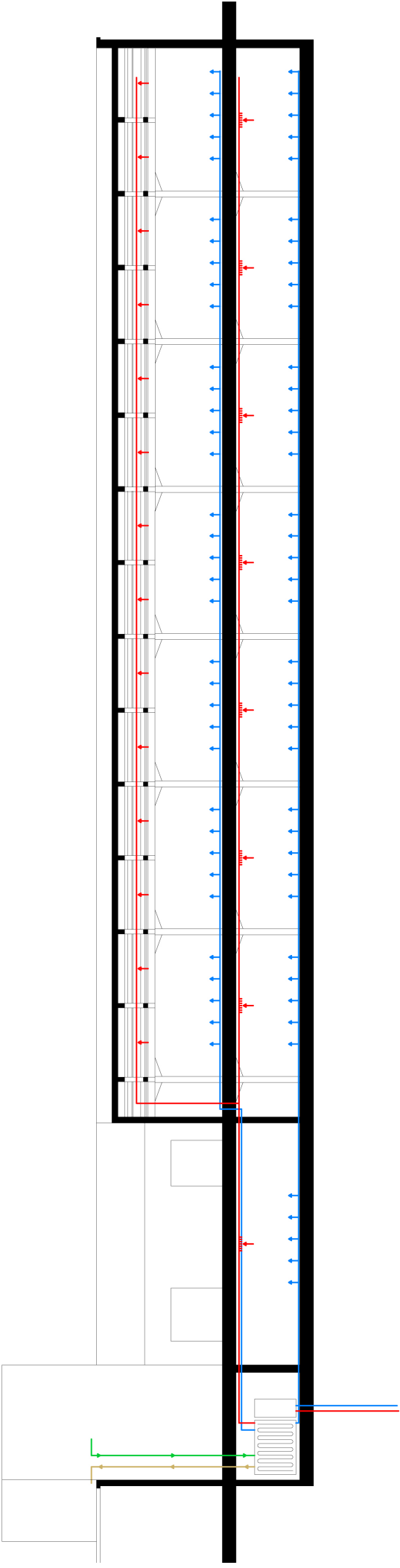


project

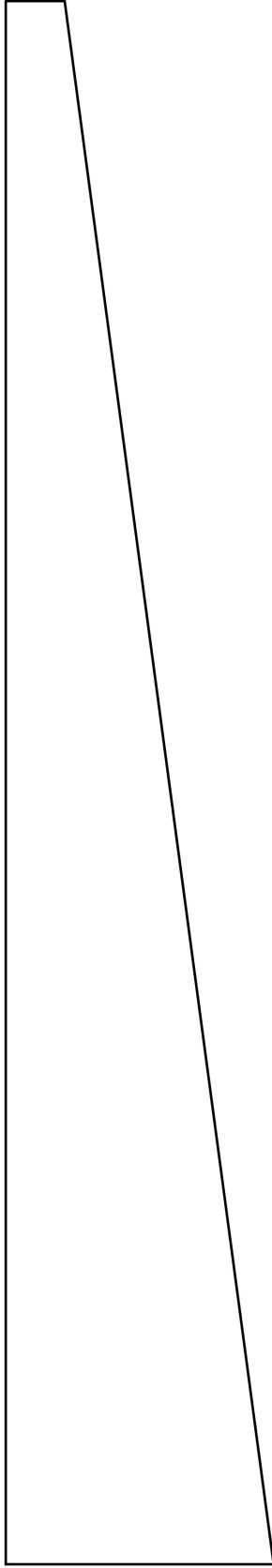


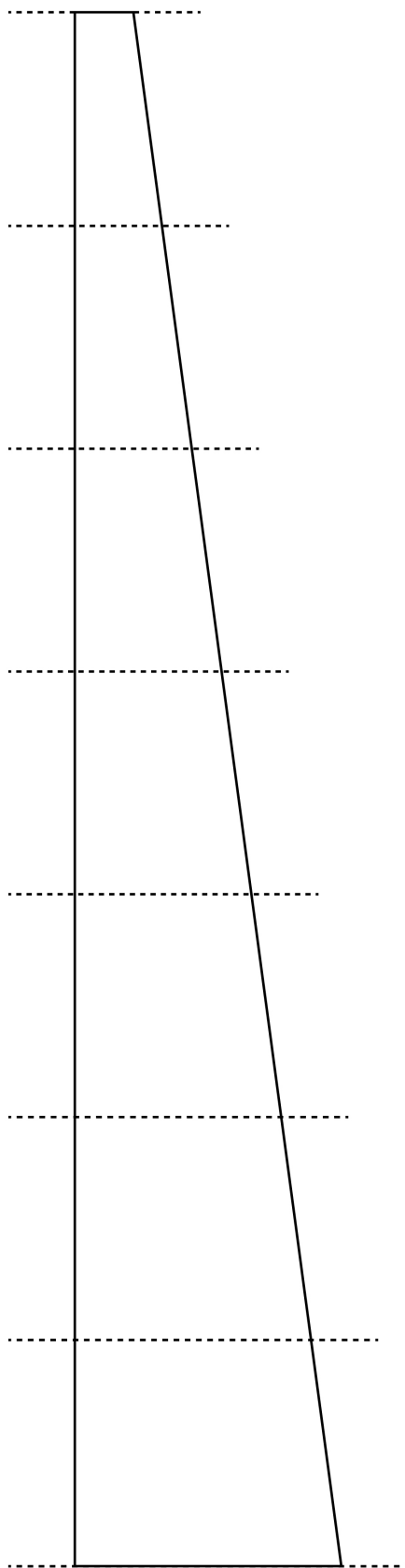


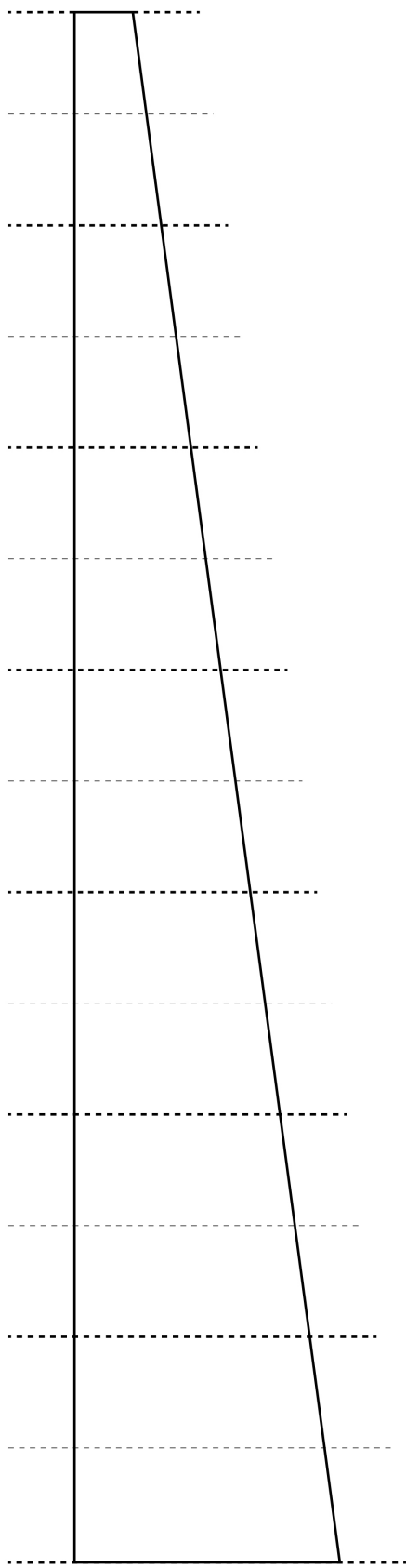


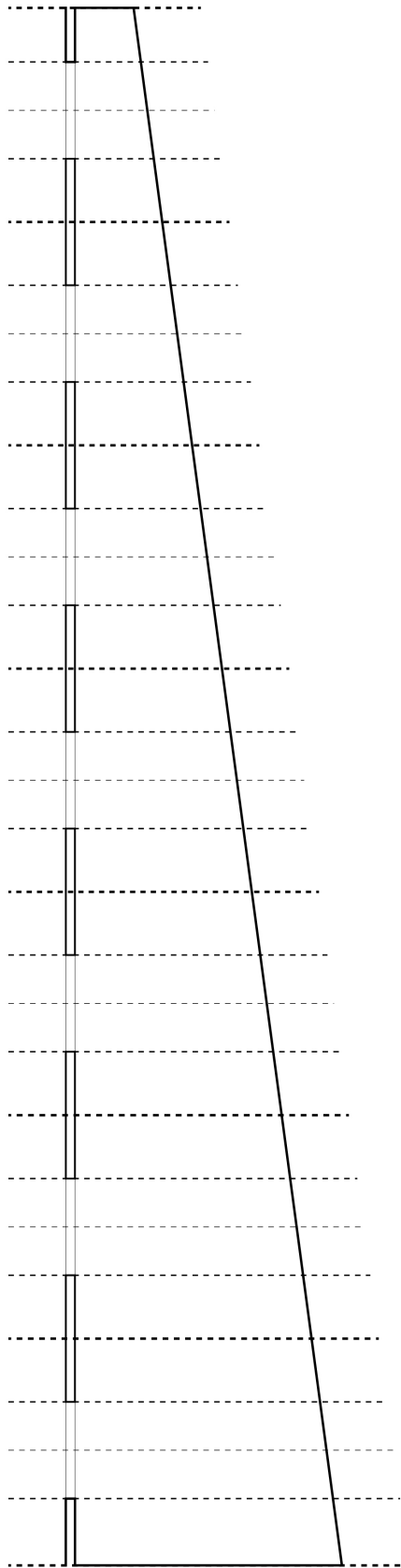


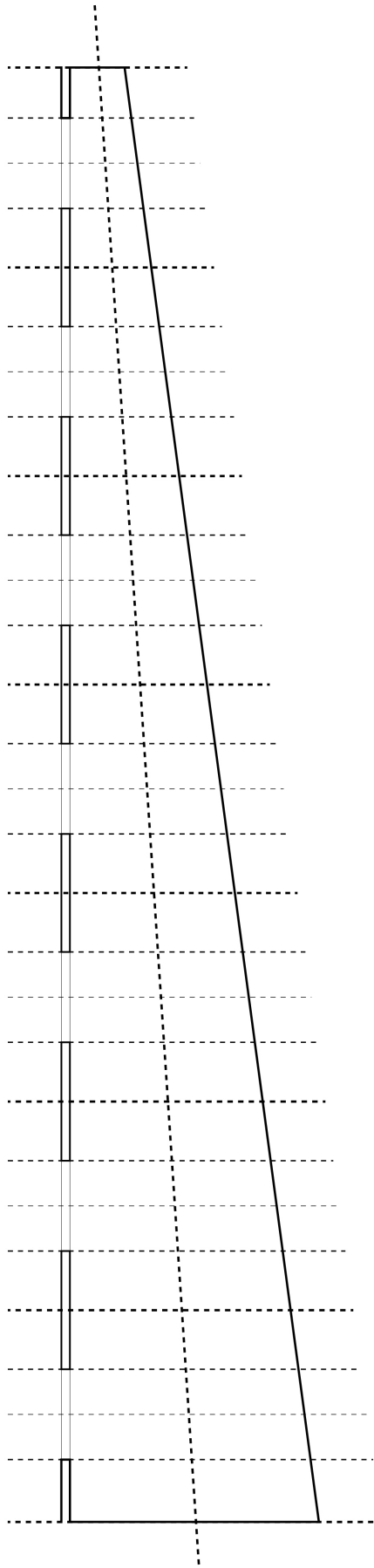
the new structure

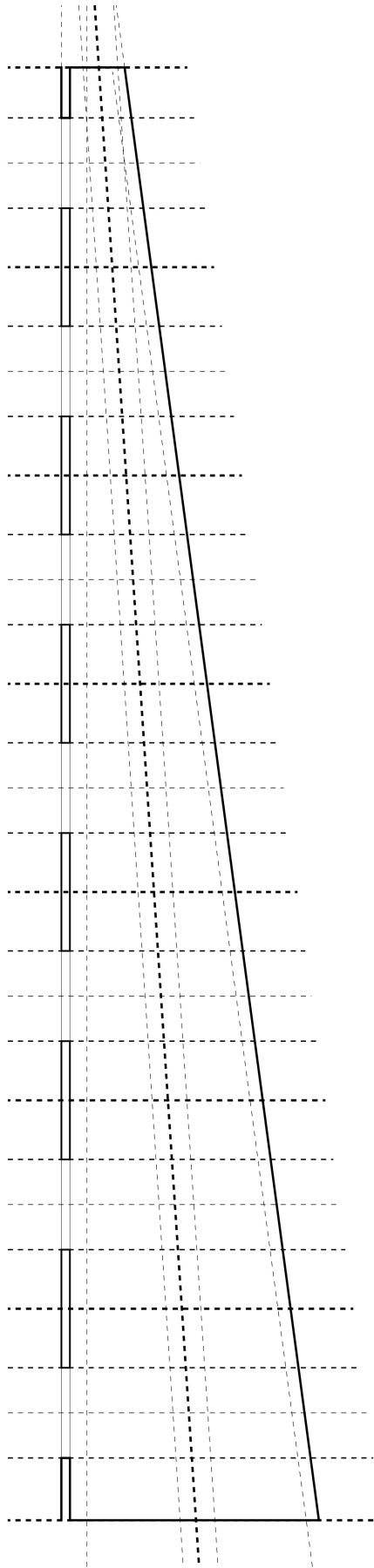


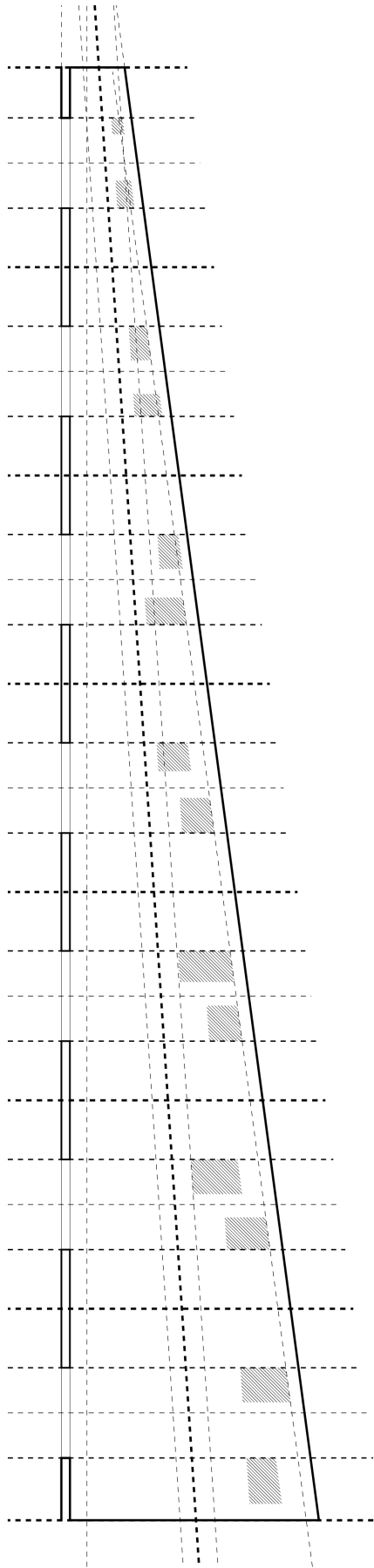


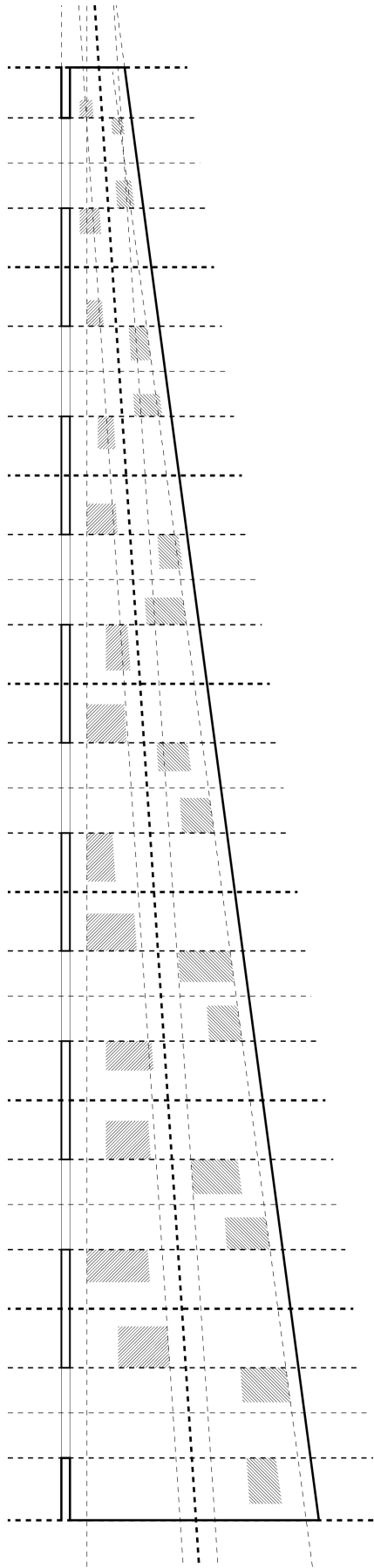


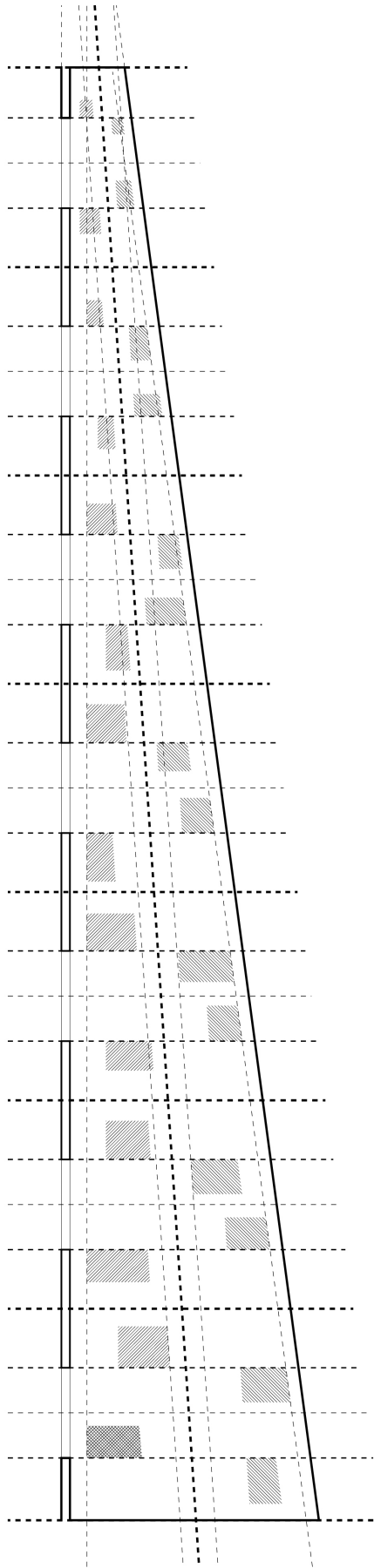


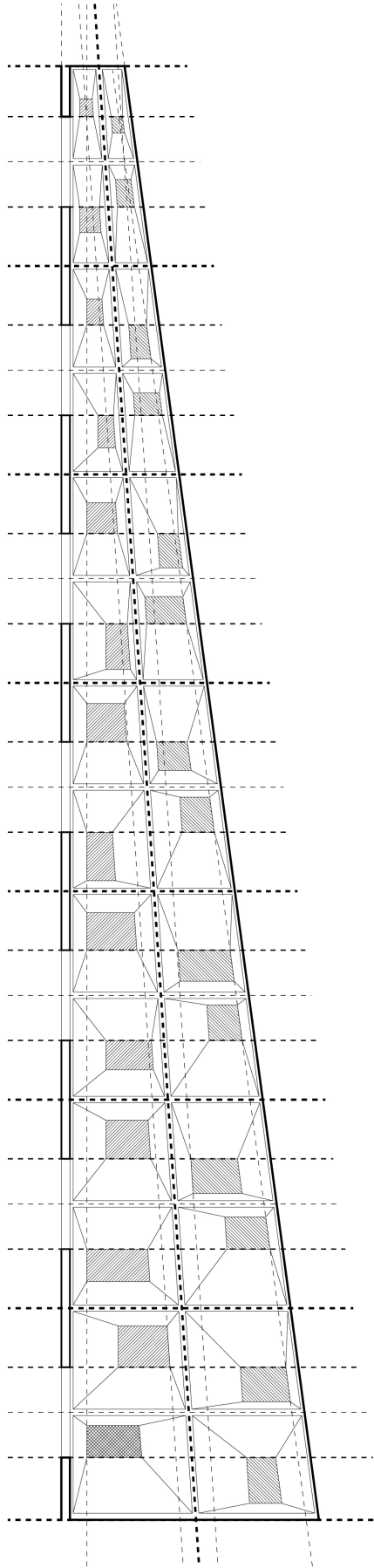


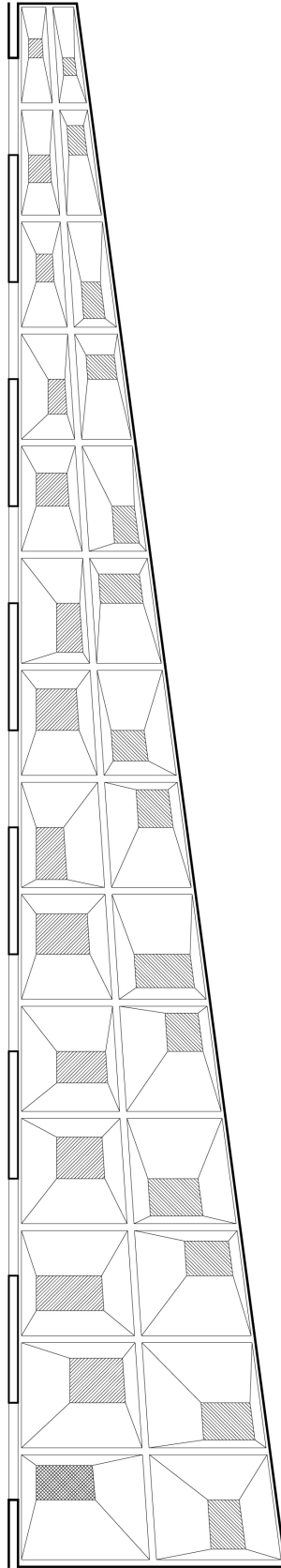


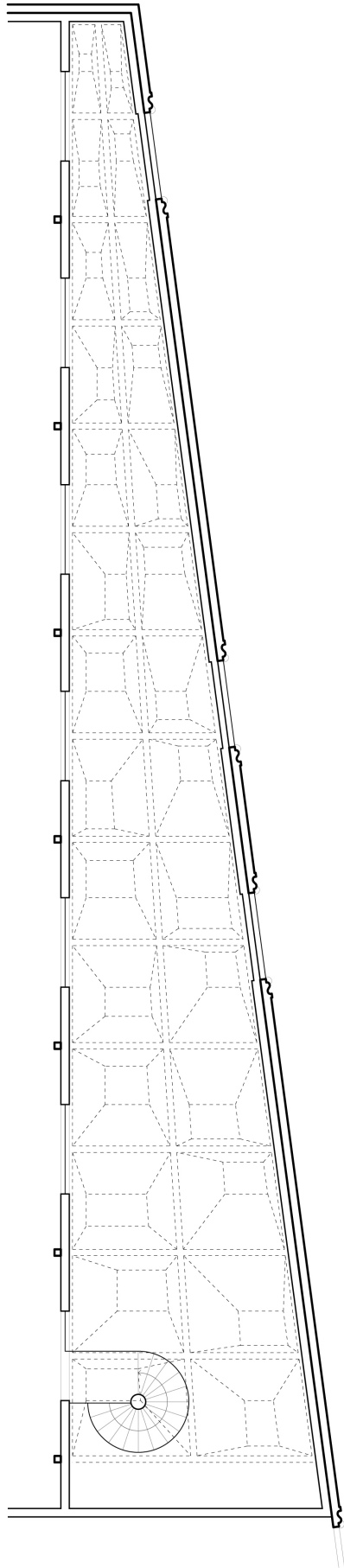


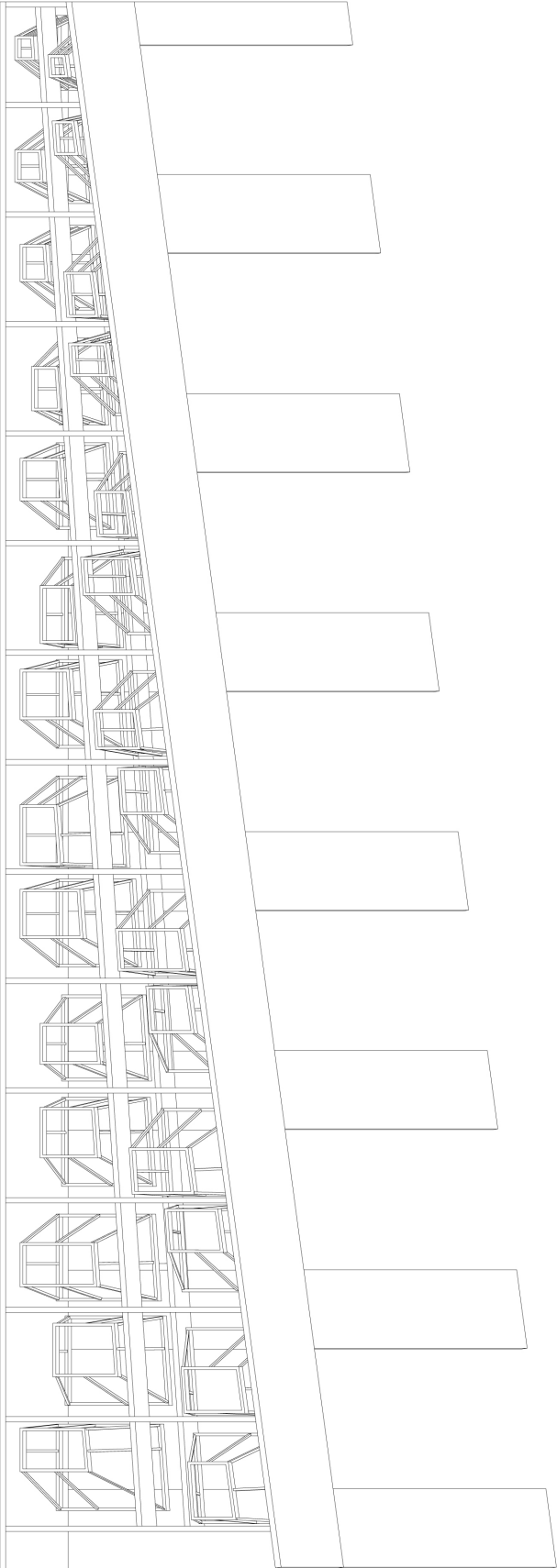


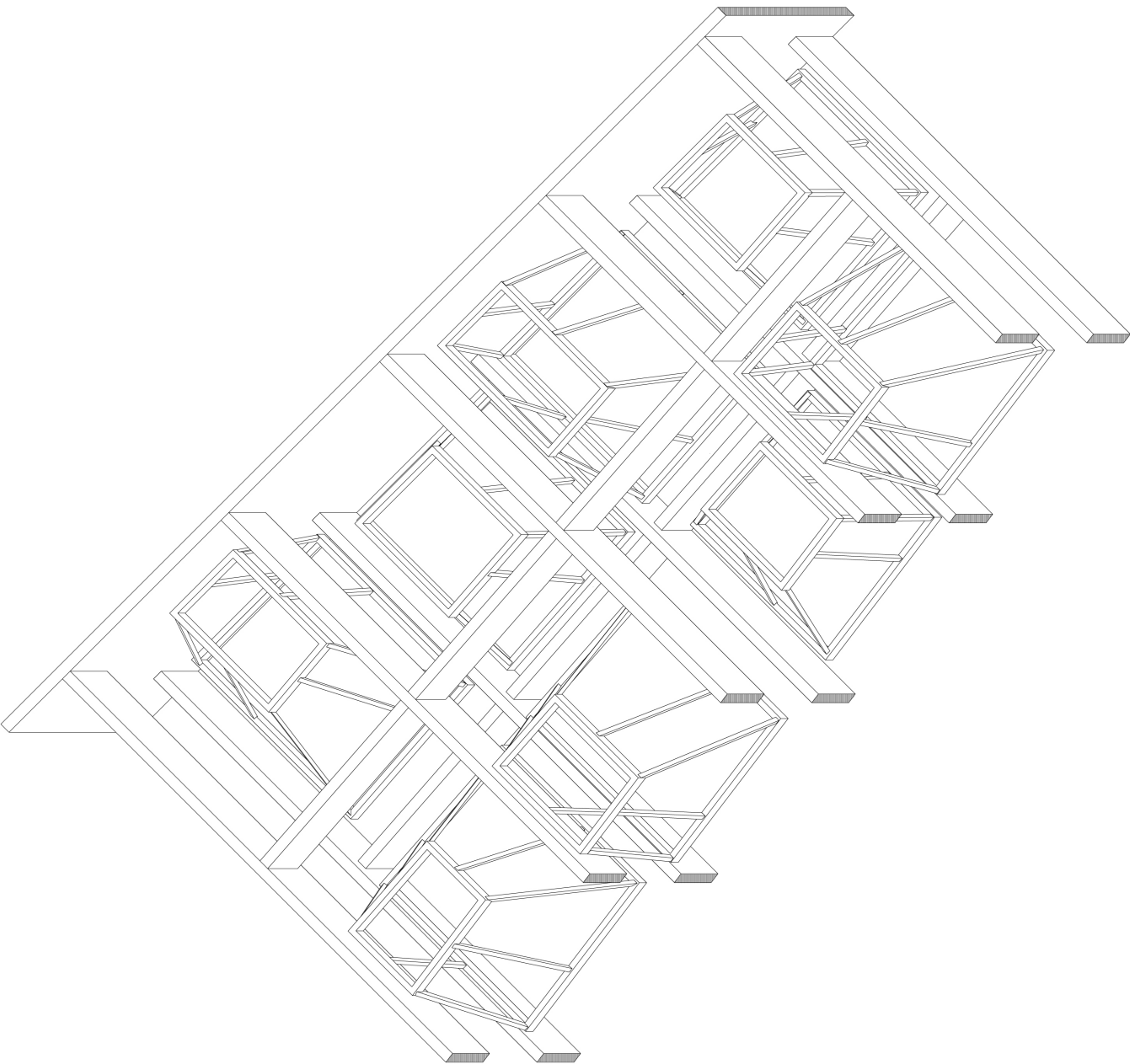


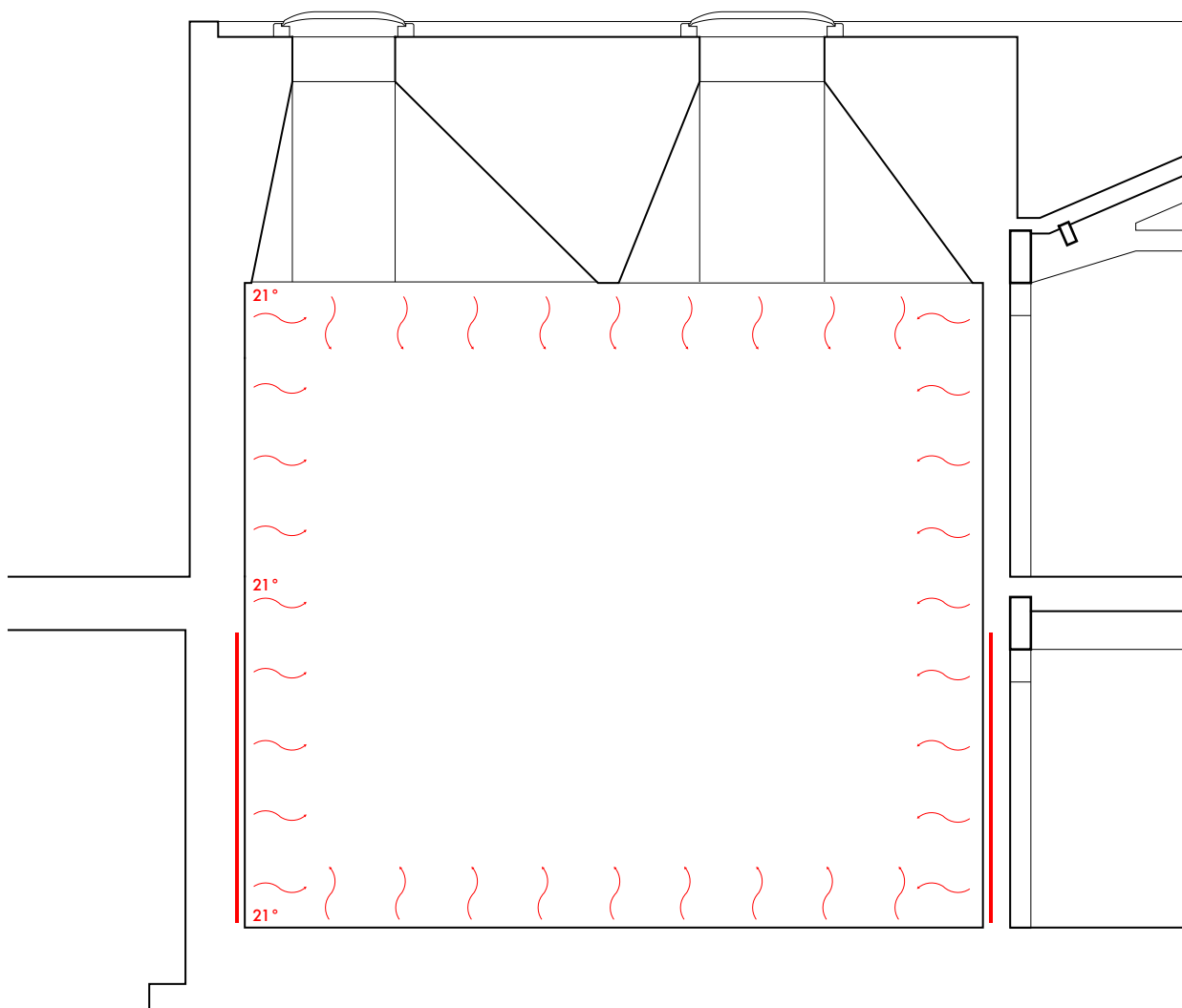


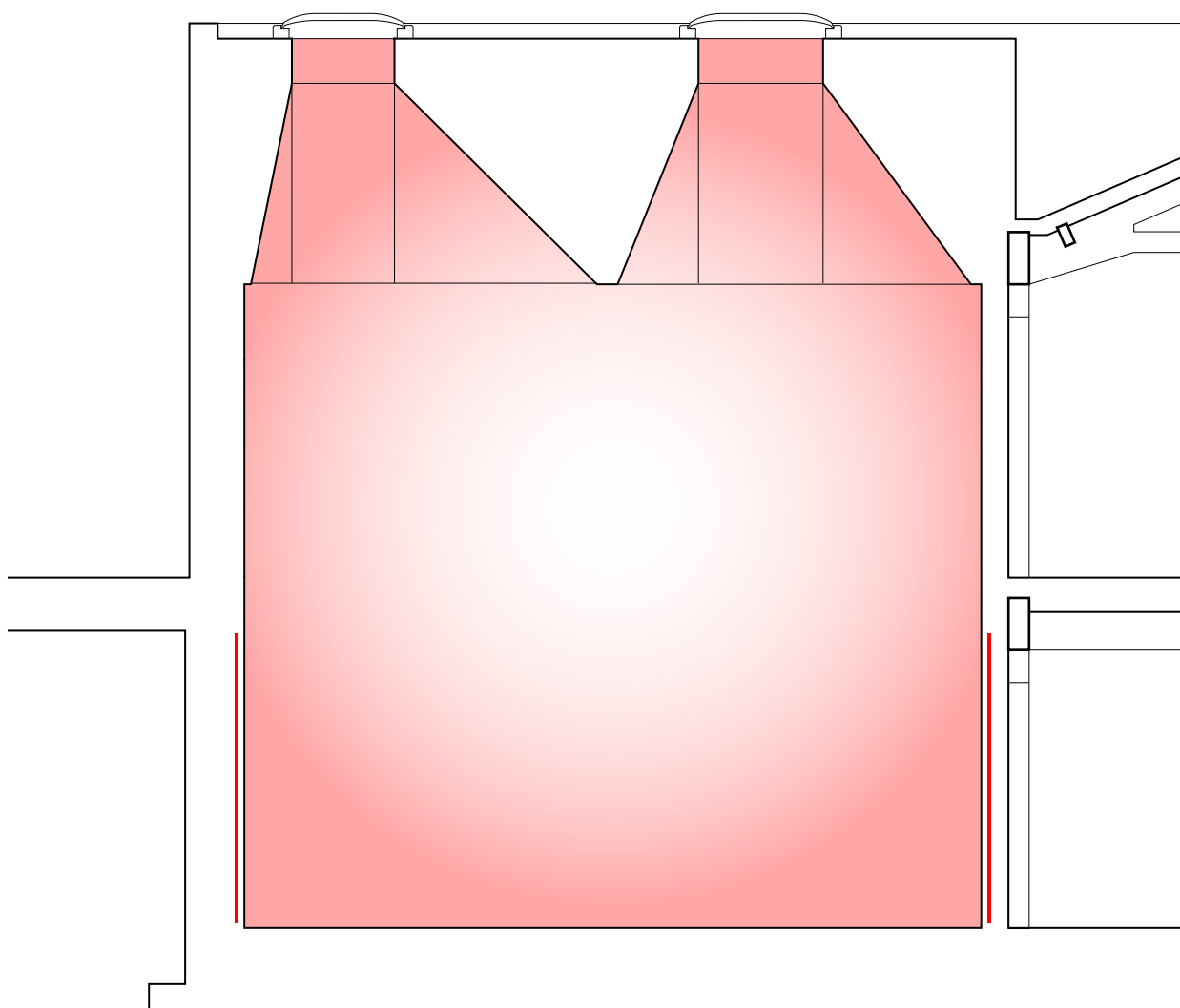




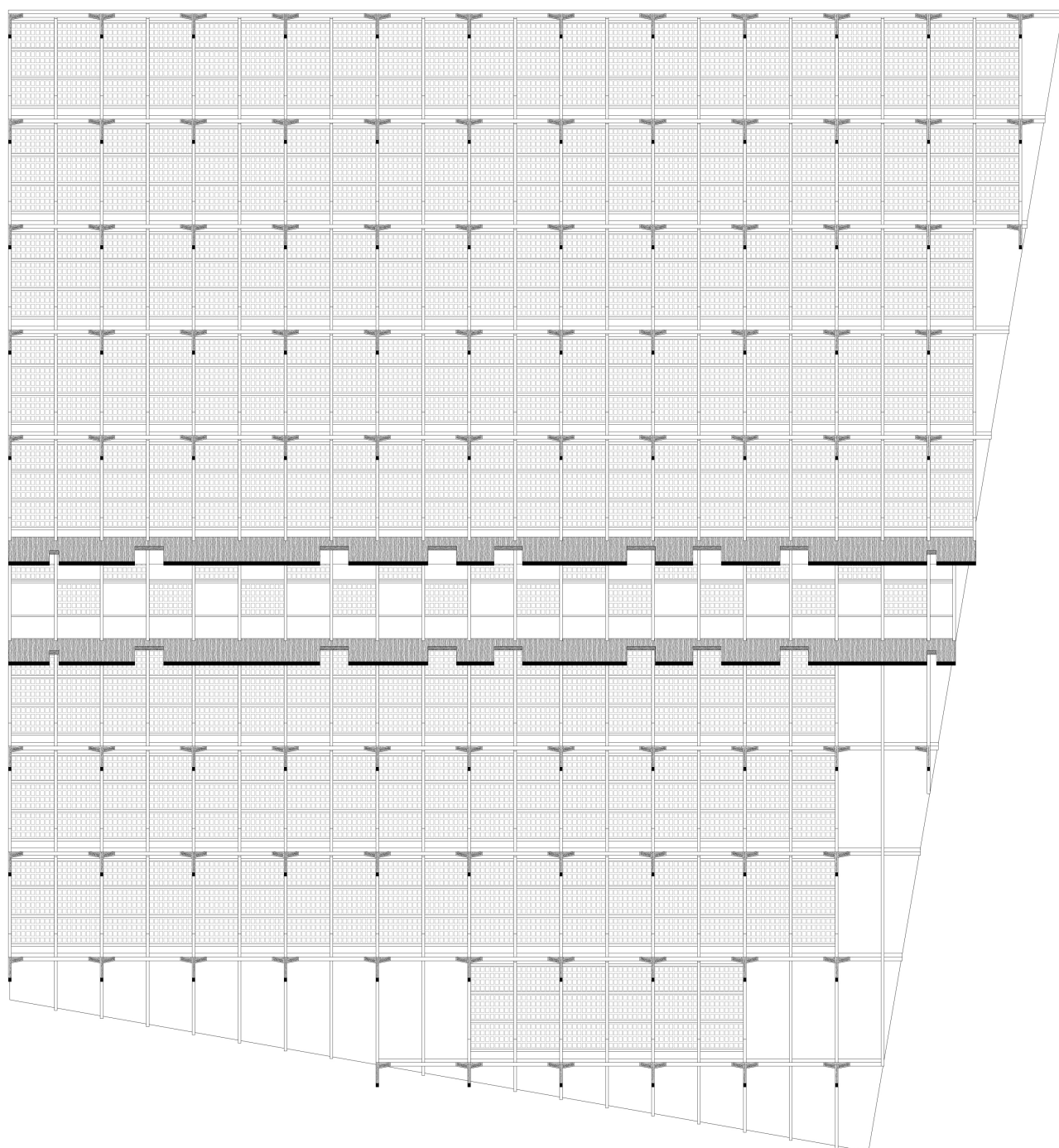


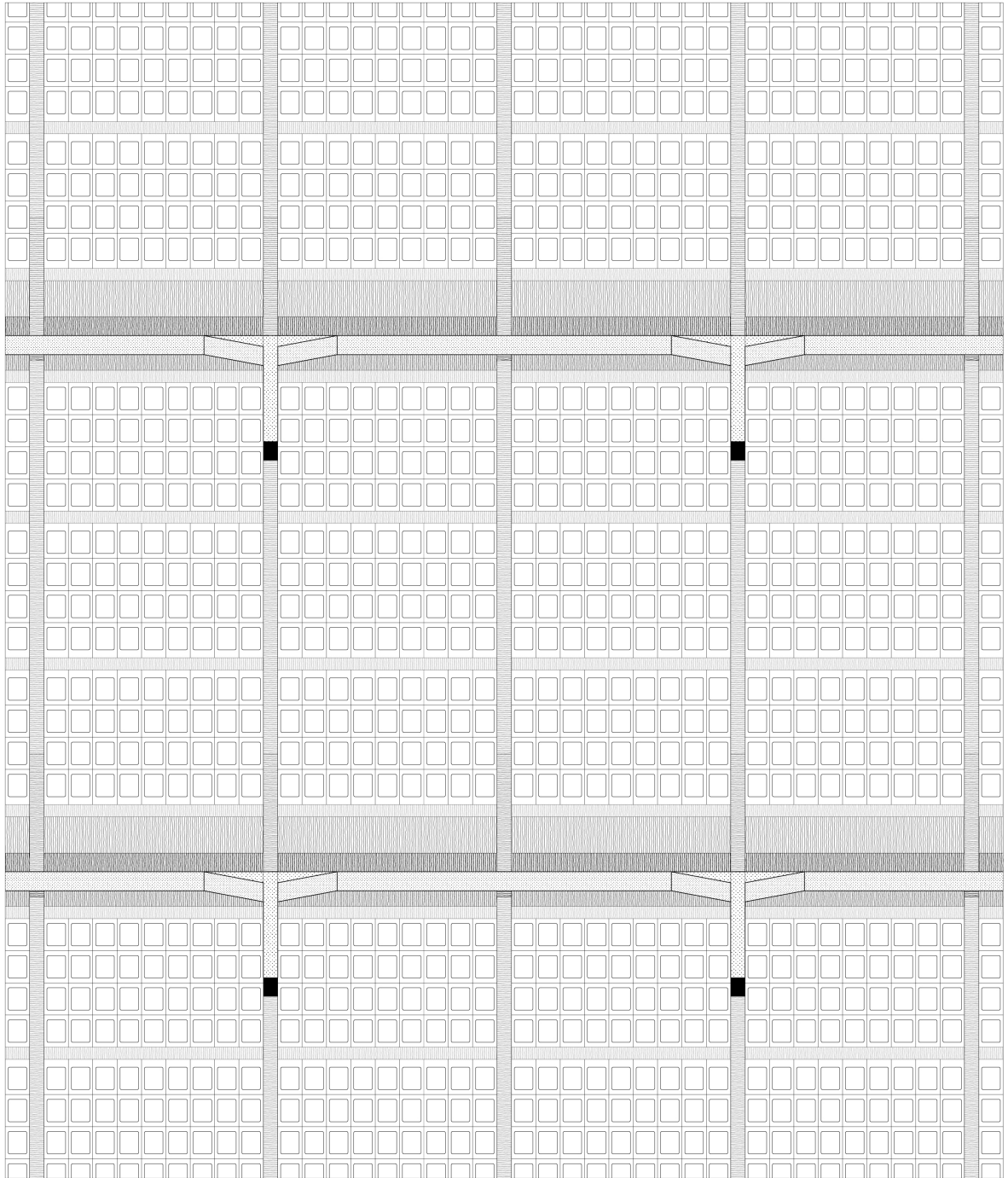


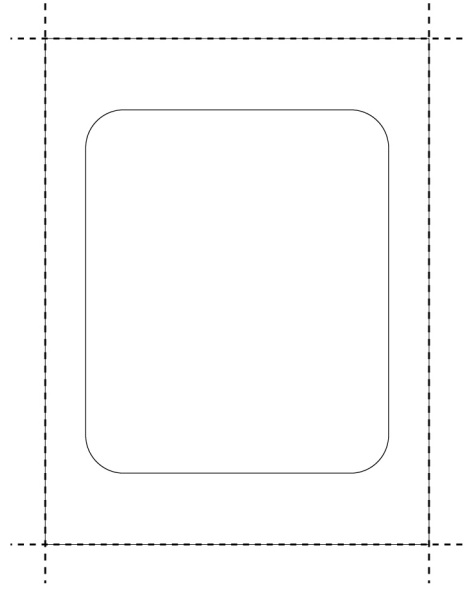


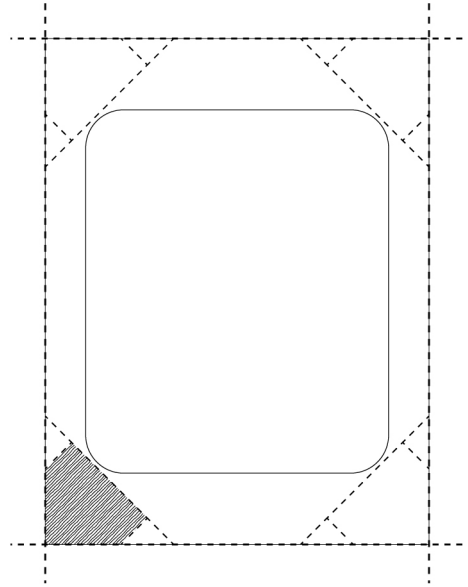


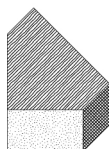


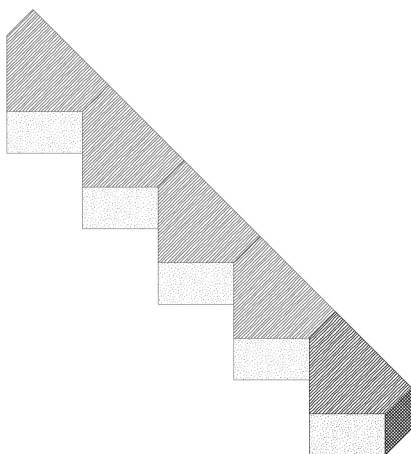


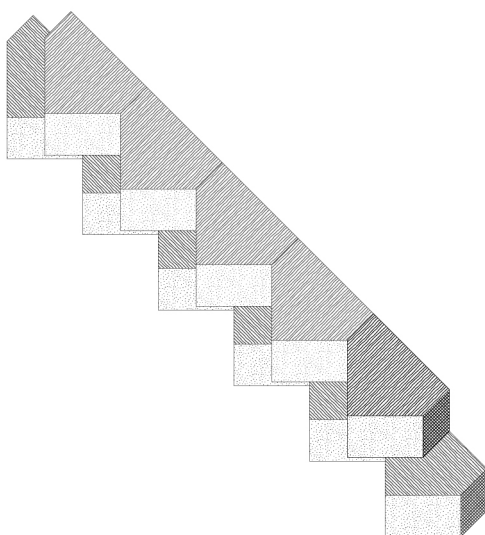


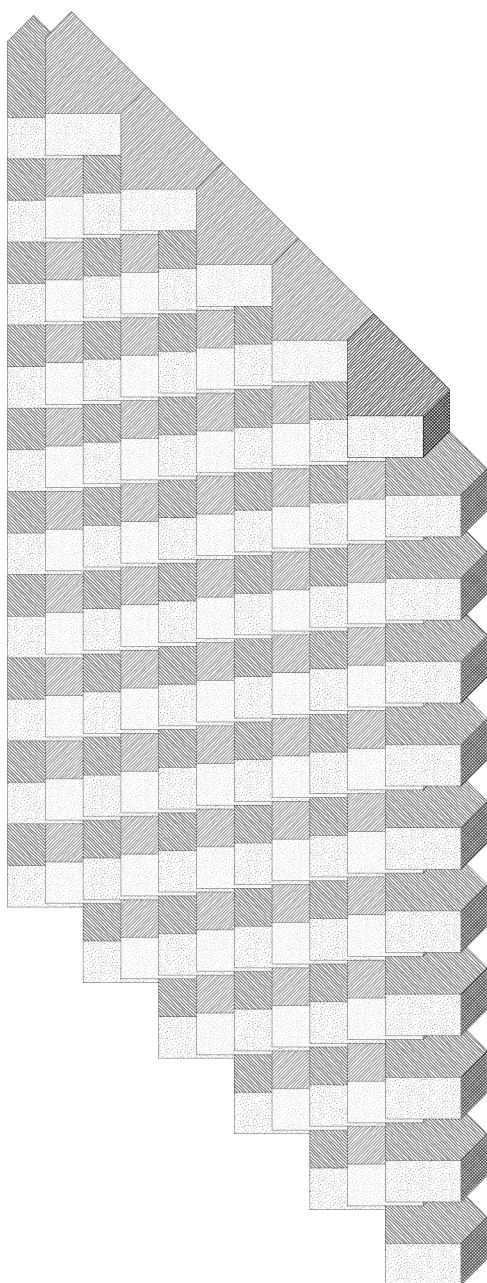


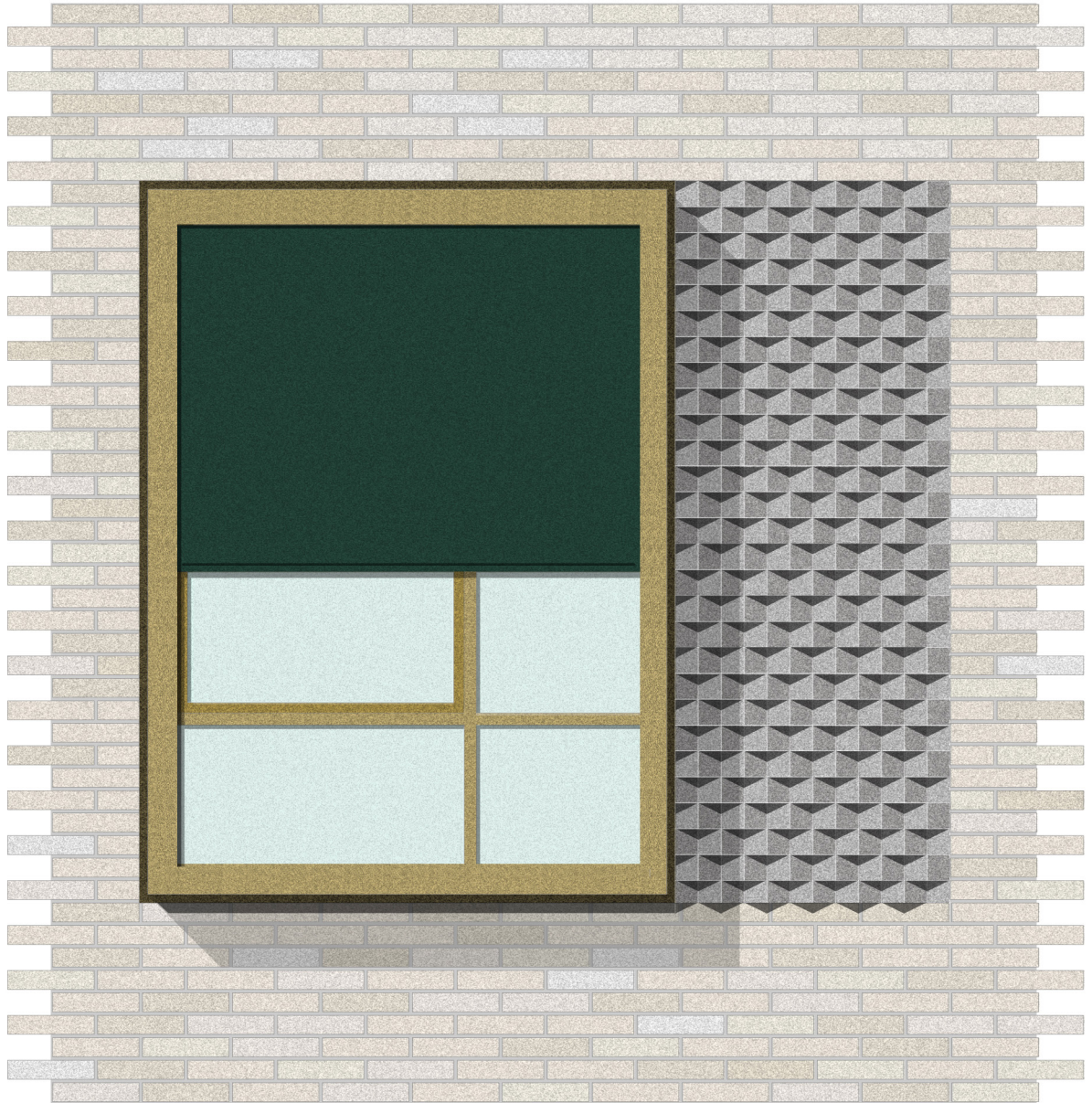


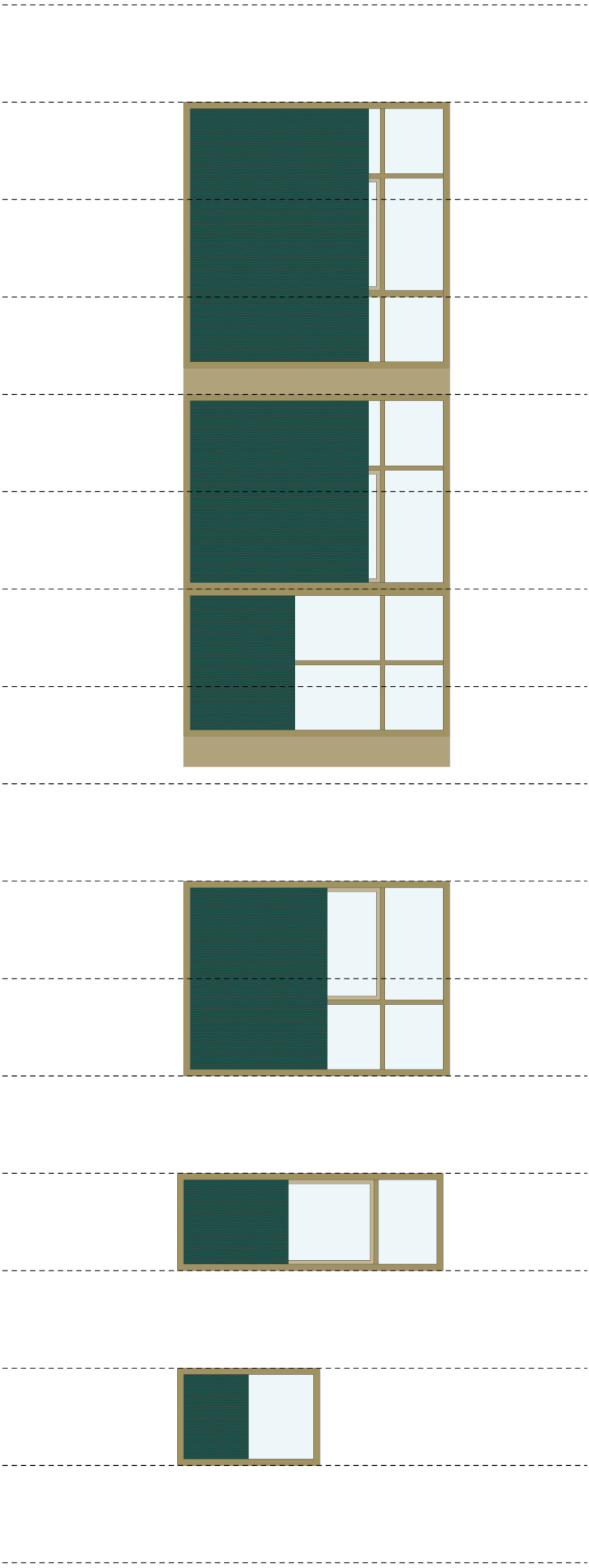












Service

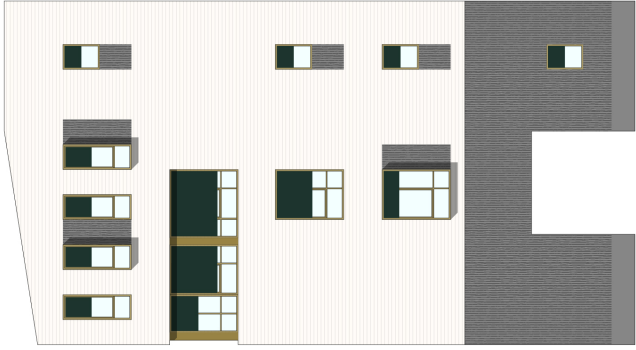
Meeting

Office

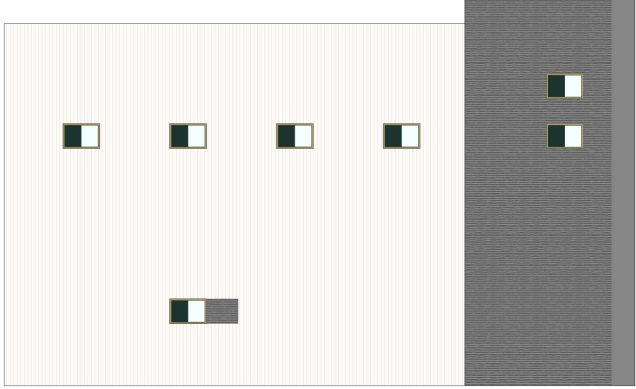
Recreative



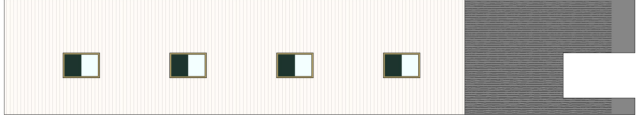
South



East

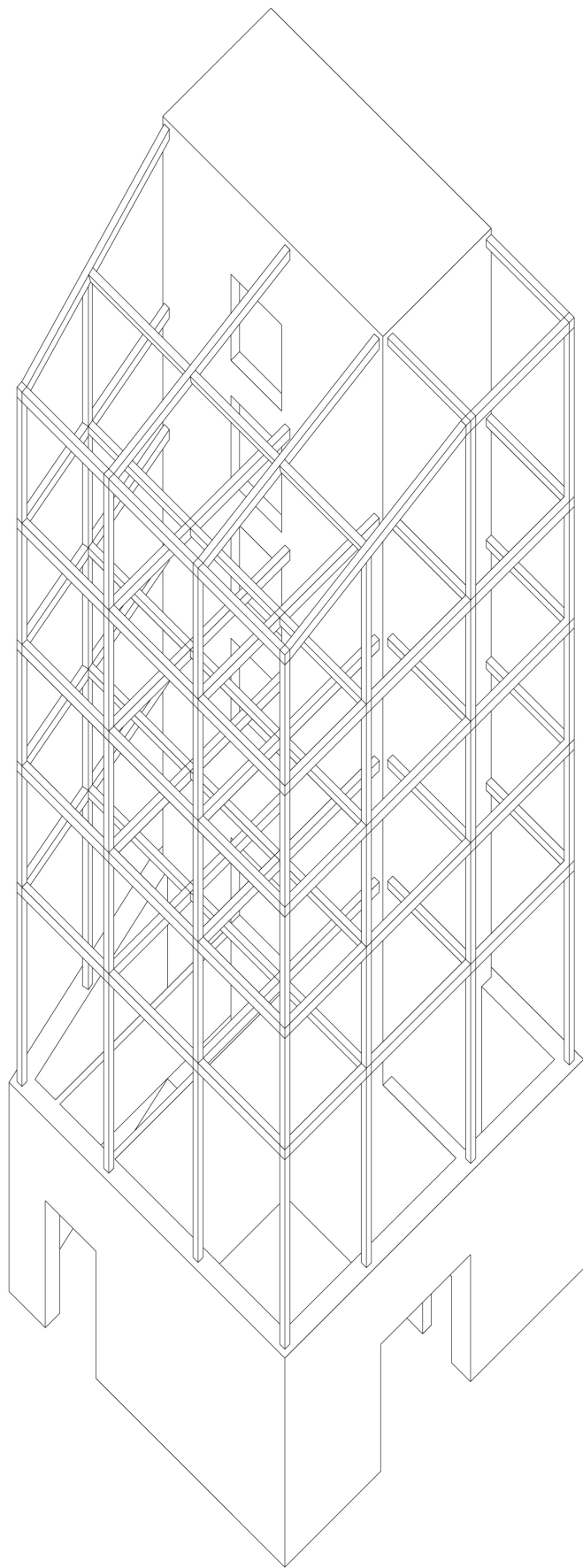


North



West













1. wood [cajč]
2. wood [auditorium]
3. resin [textile lab]
4. wood [expo spaces]
5. hp plaster [expo spaces]
6. resin [rest rooms]
7. wood [library]
8. garden [hortus conclusus]
9. concrete [connection tower/museum]

