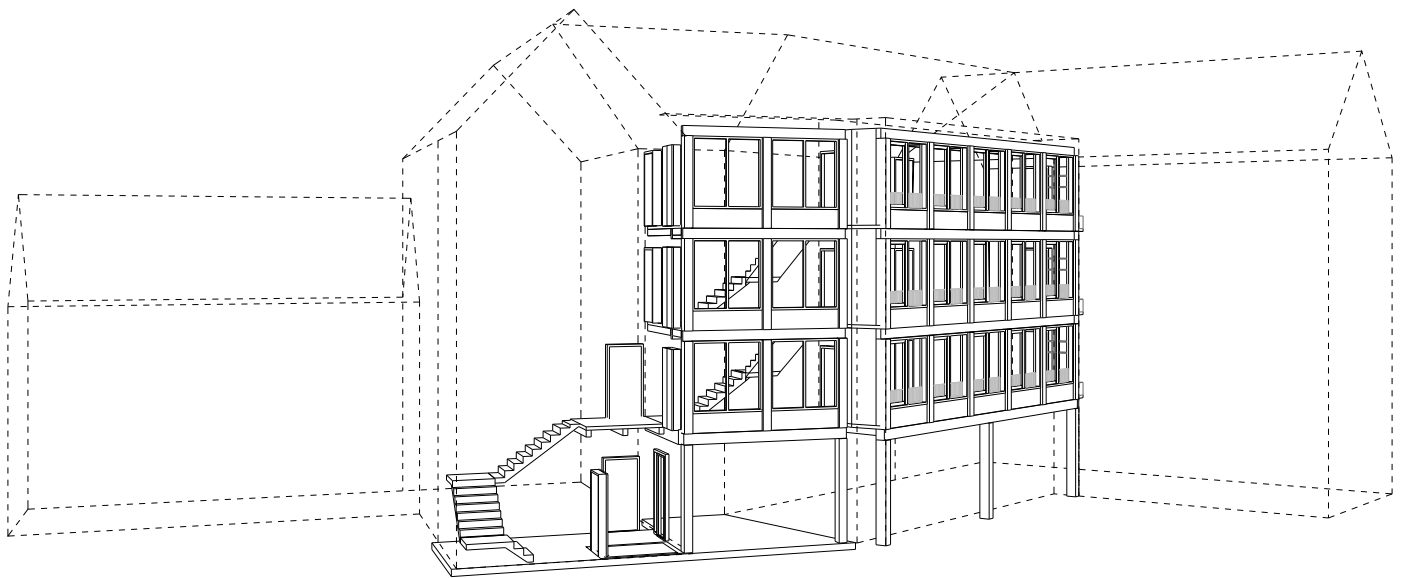


Project Journal _ P4

City Hotel, Amsterdam



Project Journal _ P4
Milou Blok
4480953
29.06.2021

MSc3 Architecture
Interiors, Buildings, Cities
AR3AI100
Tutors; Mark Pimlott, Mauro Parravicini, Daniel Rosbottom, Sam de Vocht

Content

This part of the journal is a collection of the design progress from week 4.1 until week 4.5, leading up to the P4. Besides documenting the design progress, references and precedents found and used in this period are added.

Week 4.1

Lecture Anna Puigjaner

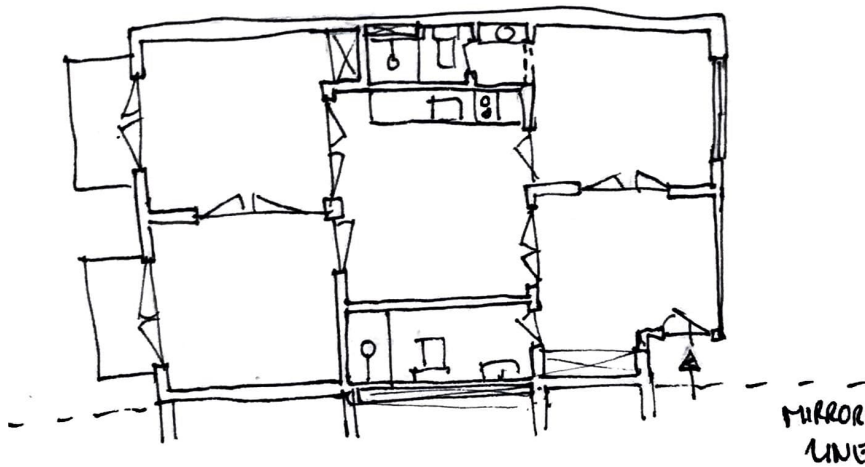
The London Inn

Rethinking the floorplan _ circulation, a serie of iterations

Rethinking the floorplan _ relationship between host and guest

Enfilades _ how are they made and what are they used for?

Facades



PAGE FROM SKETCHBOOK _ 110 ROOMS FLOORPLAN

Berlage keynotes lecture _ Anna Puigjaner

'We need to dismantel the modern house as we know it'

Demand for flexibility

End of the 19th century. This flexibility can be seen in the size of the apartments, which could be made bigger or smaller by adding or detaching a room (the guest house in my case), and in the possible amenities one can use (laundry room, communal kitchen, workshop)

The compact kitchen

Emerged in the US, always designed in relation with a communal kitchen _ Do my apartments have a compact kitchen??

110 rooms, Barcelona

Ambigious rooms. No halls or corridors, they provide an etra layer of complexity, only used for routing. Every room can potentially be something else, except for the bathroom and kitchen, they are the 'heart' of the apartment.

What represents the collective?

The ground floor

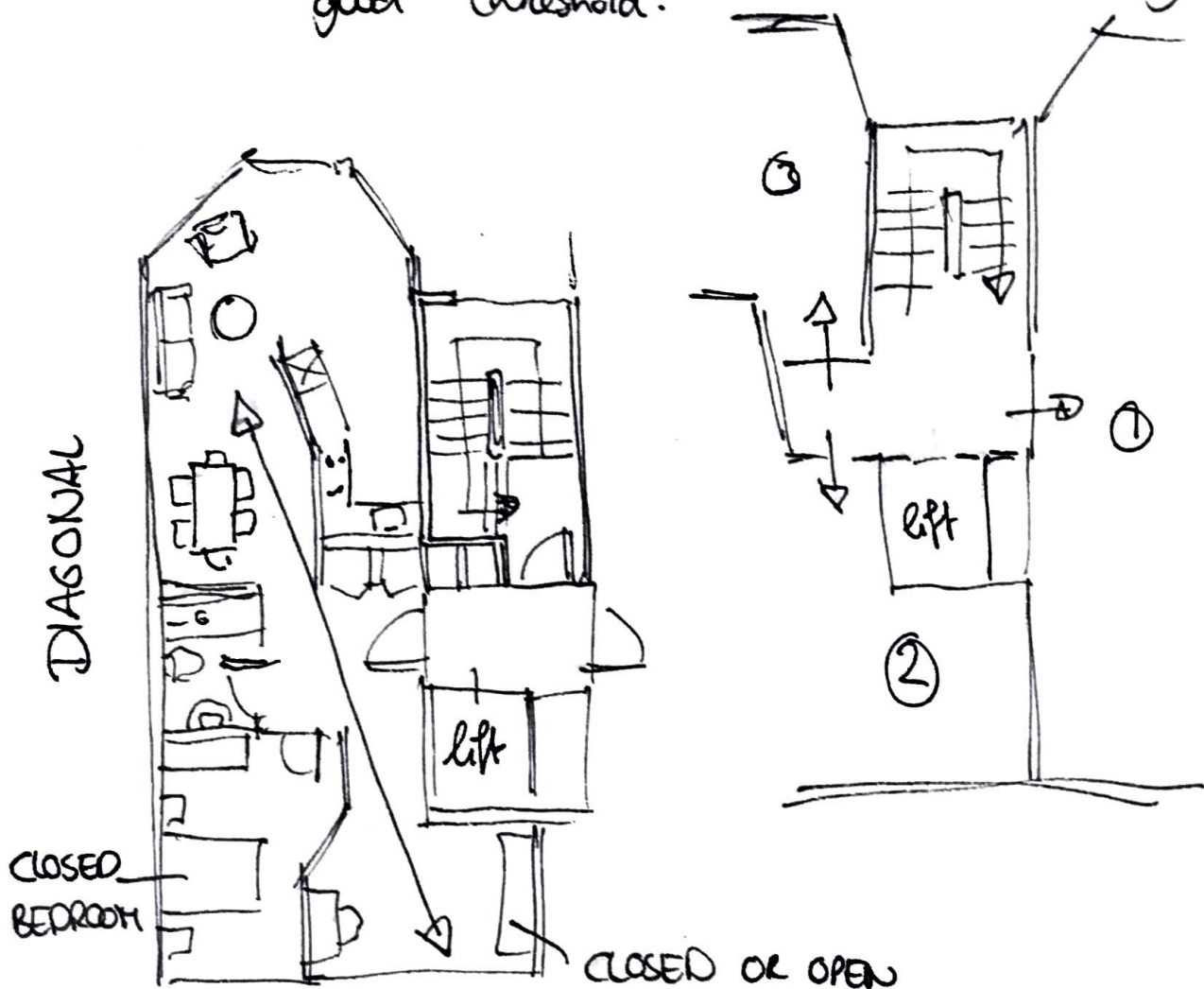
FLORES Y PRATS, BERLAGE KEYNOTES

19.04.21

Courtyard → Place for meeting

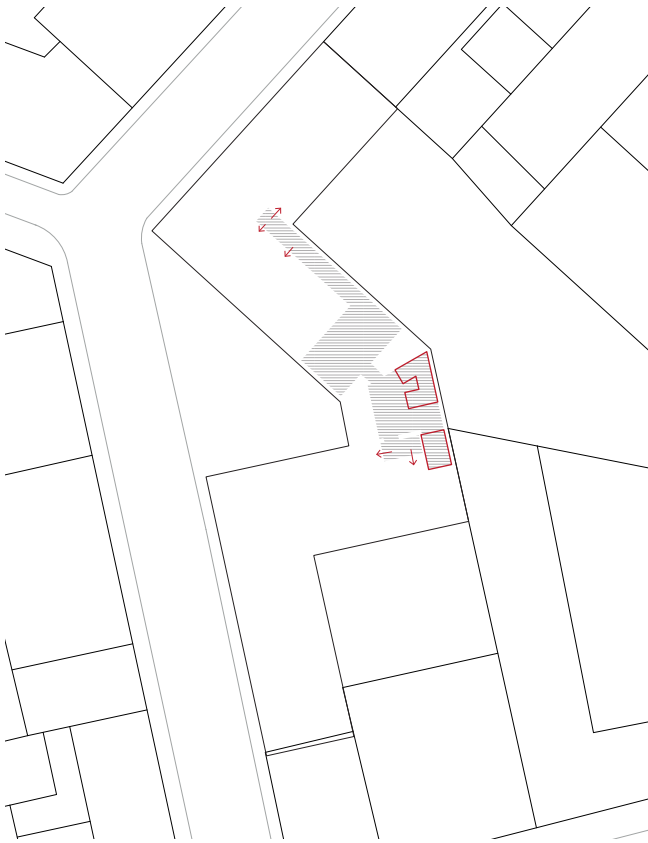
All different staircases, so no hallway needed

Staircases → view steps 'in the shadow' → courtyard
good threshold.



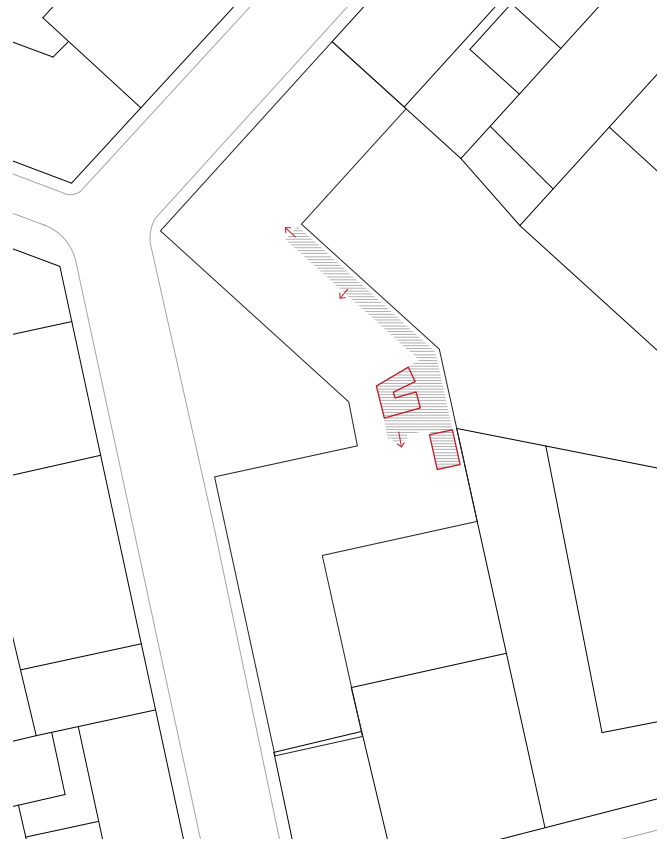
2 bedrooms if you want to
50-60 m²

2-SIDES LIGHT & AIR



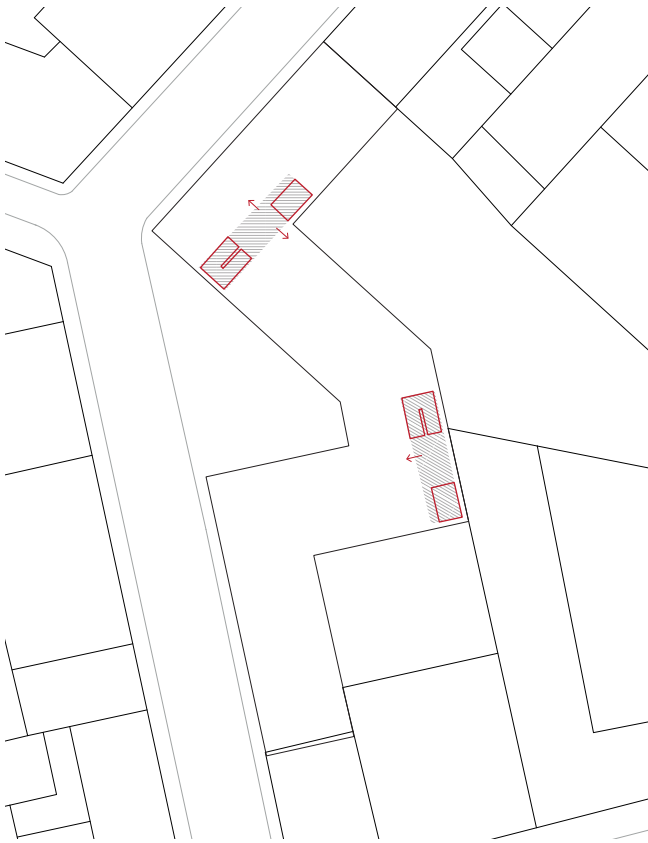
STAIR AS IN P3

Circulation is not very efficient
Especially on upper floors



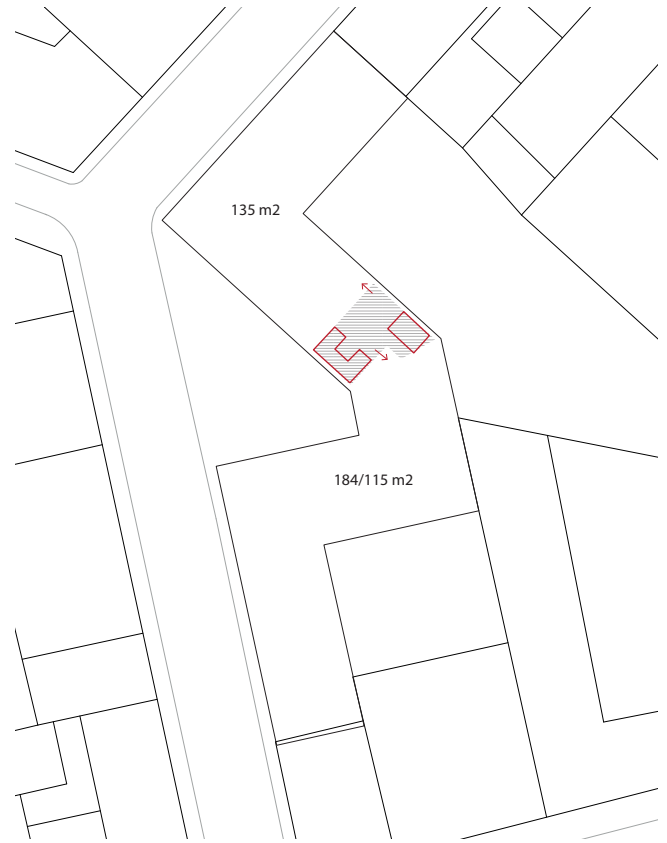
STAIR 'MIRRORED' TO MAKE CIRCULATION MORE EFFICIENT

Circulation makes more sense
How to combine the guest room and apartments
on the north side of the building



TWO STAIRCASES

Less hallway/corridor space
 How to enter both on the ground floor?
 Really disturbing the sequence of spaces on the ground floor



STAIRCASE MOVED TO LOBBY SPACE

Opening up the 'connector' to really be a connector between the two exterior spaces
 Taking the space that was a bit awkward on the first floor
 But the location of the building is very nice; shouldn't it be used for living instead?
 No lobby anymore
 Probably only 6 units (more generous) possible

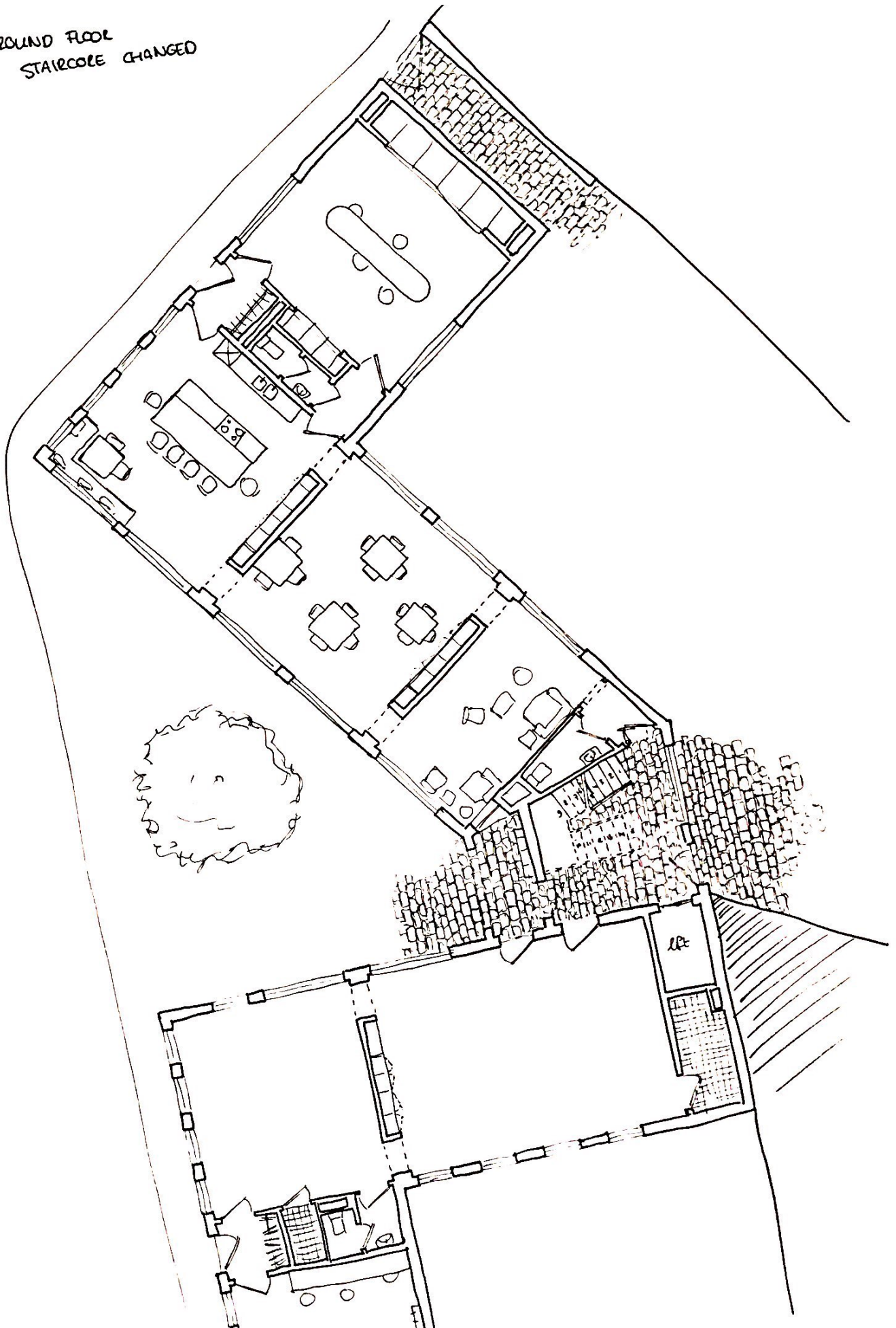
Floorplans adjusted

Staircase shifted

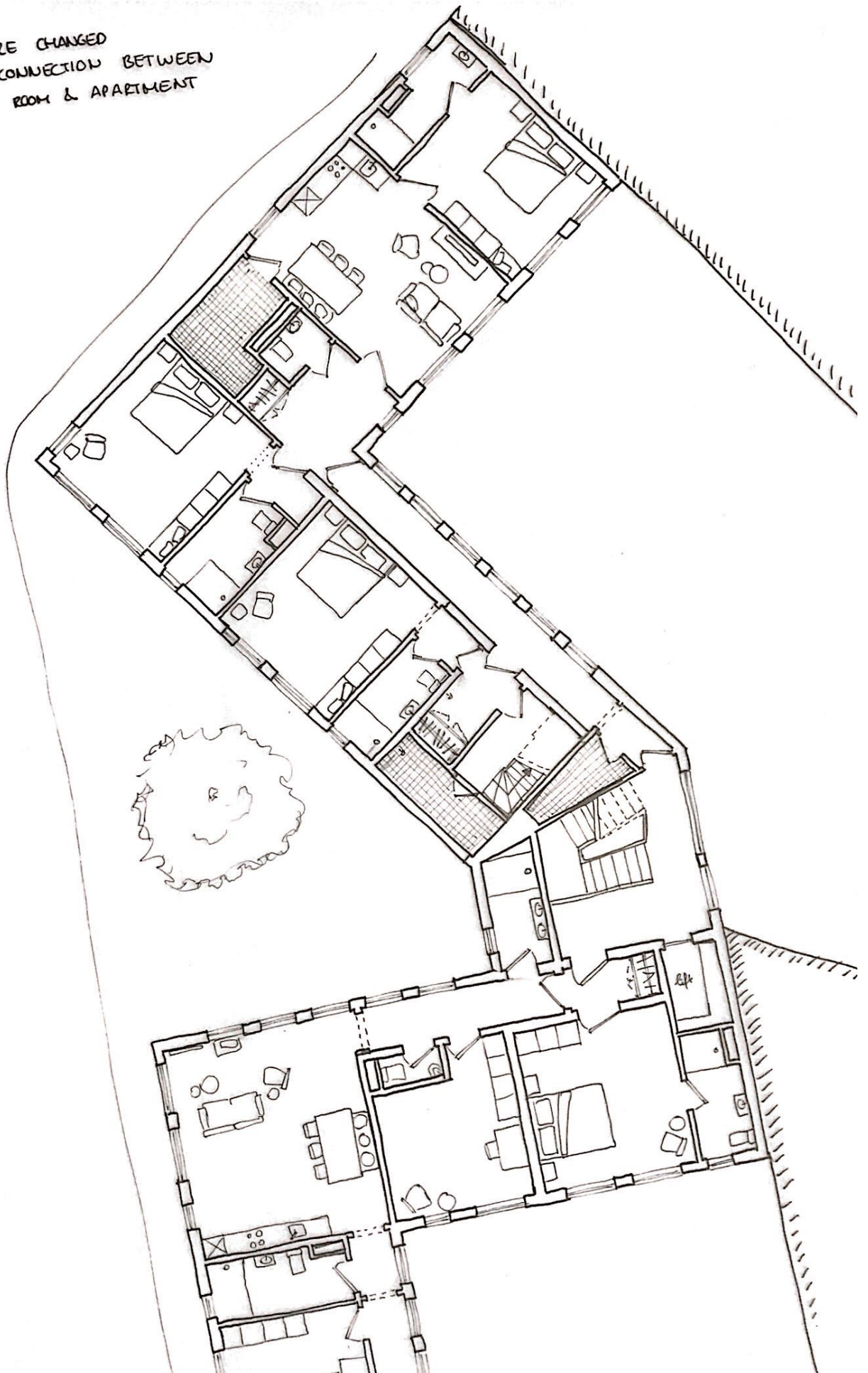
Stone of the public square going into the circulation core, connecting the square to the garden

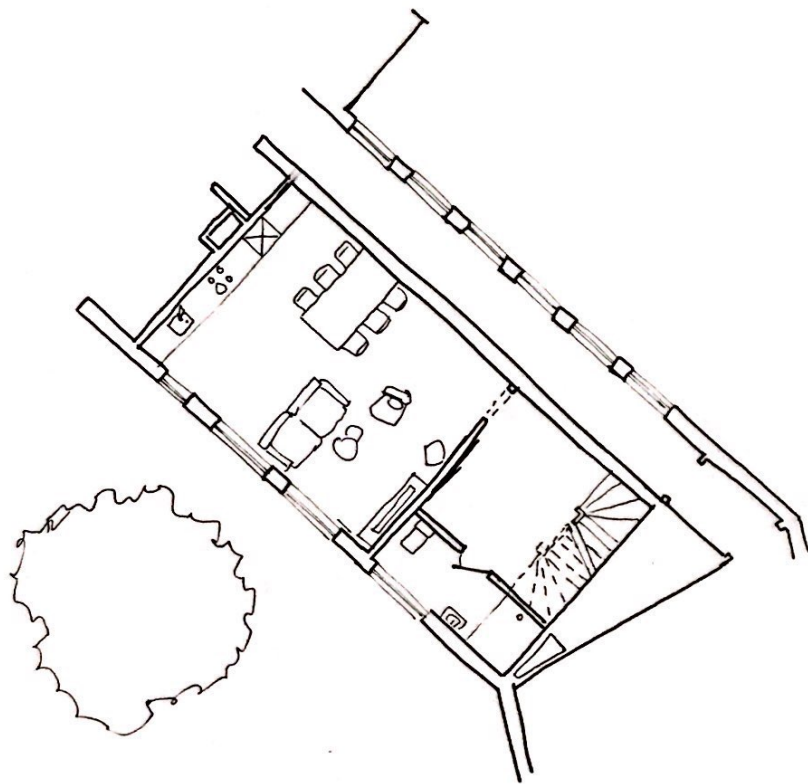
Enfilades as 'usable' elements

GROUND FLOOR
STAIRCOLE CHANGED

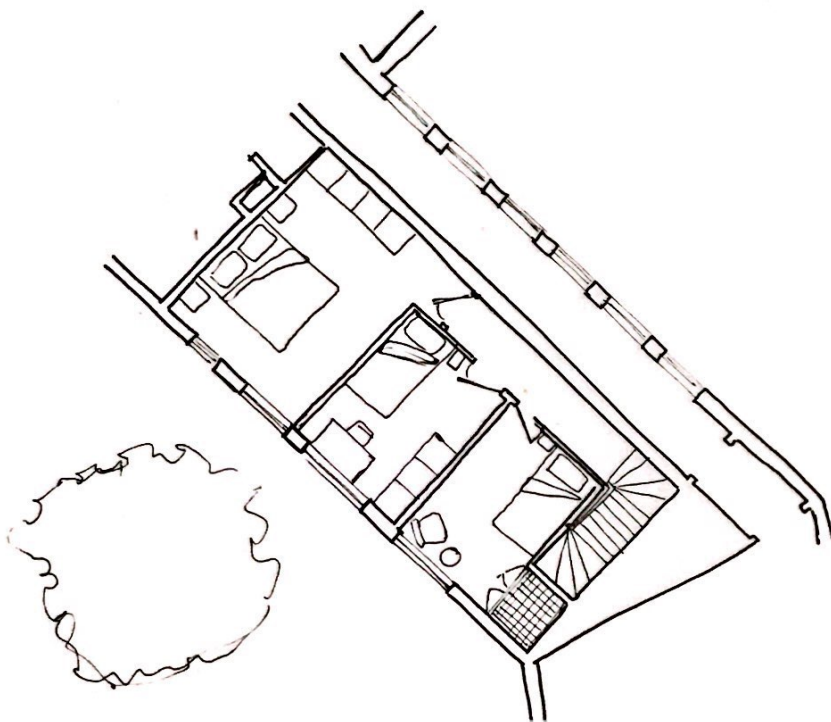


FIRST FLOOR
STAIRCOLE CHANGED
MORE CONNECTION BETWEEN
GUEST ROOM & APARTMENT





3-BEDROOM APARTMENT, SECOND FLOOR



3-BEDROOM APARTMENT, THIRD FLOOR

Layout

SQUARE

PASSAGE

→ nice

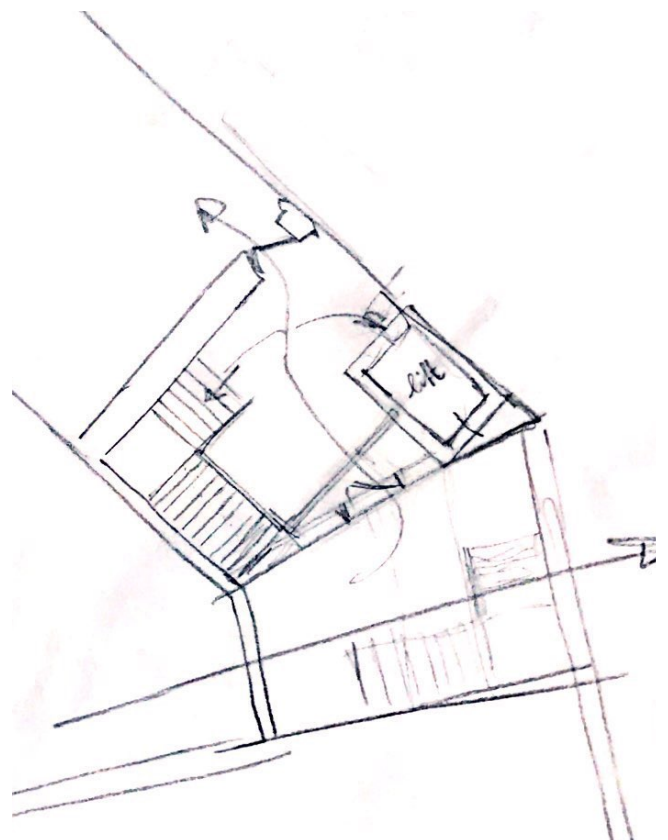
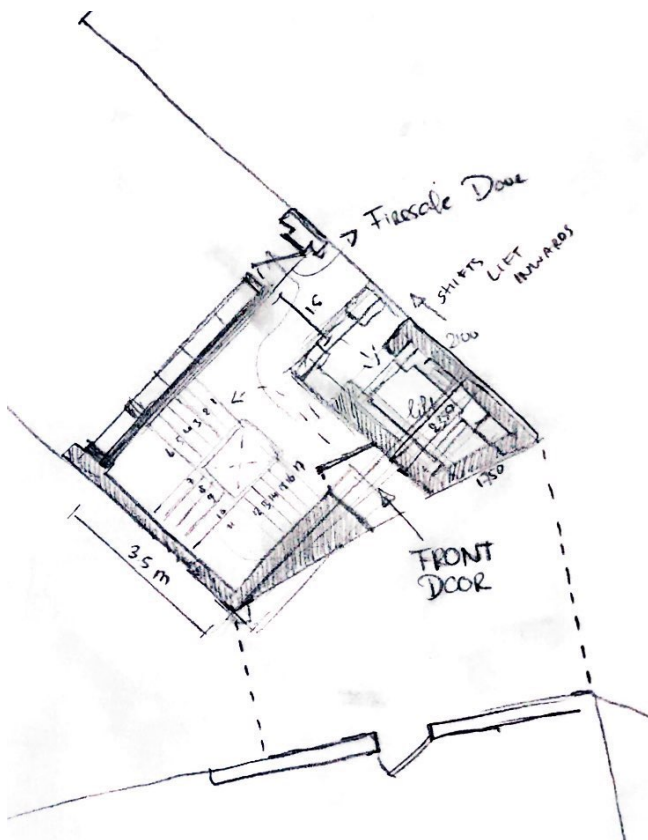
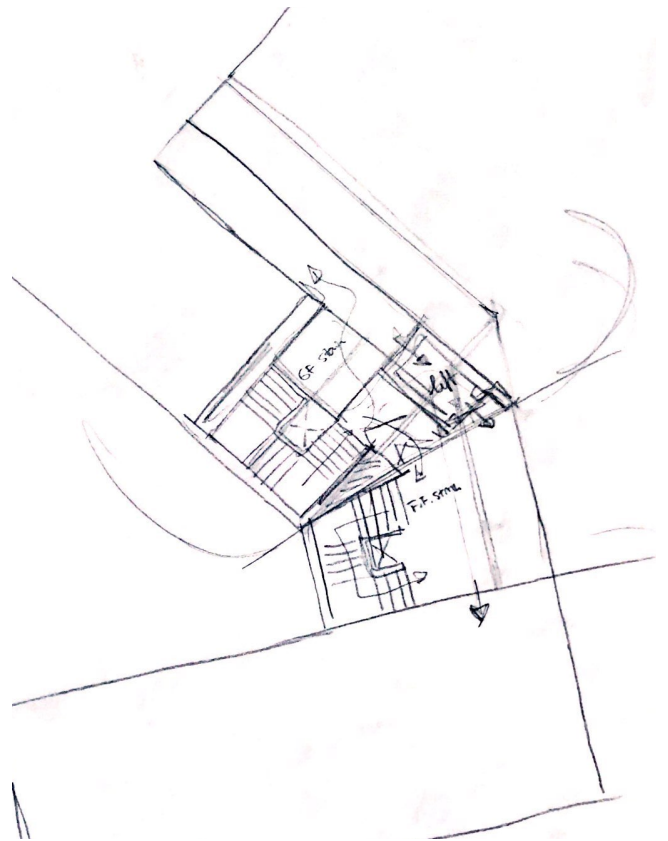
GARDEN

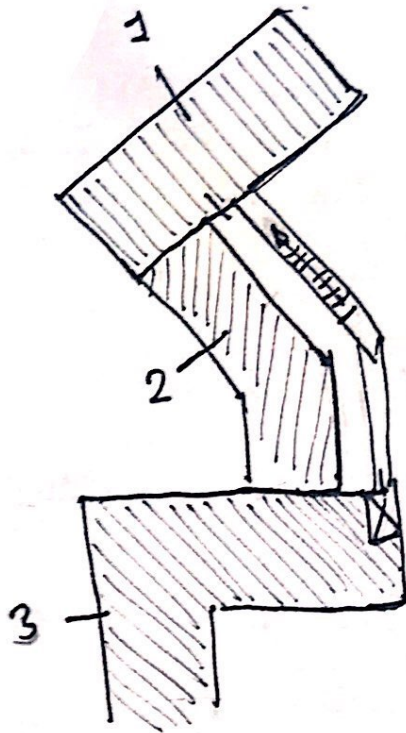
START STAIR

IN THE LOBBY

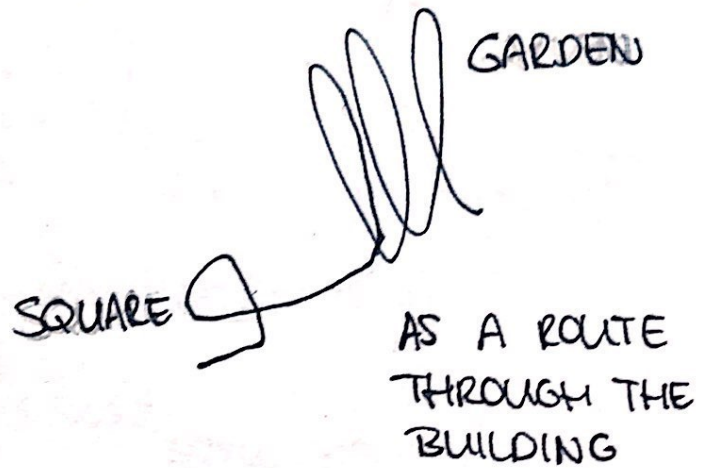
END IN CIRC.

SECRET





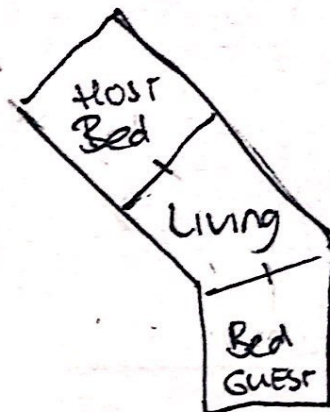
STAIR ONTO THE
GARDEN
AS LONG ELEMENT



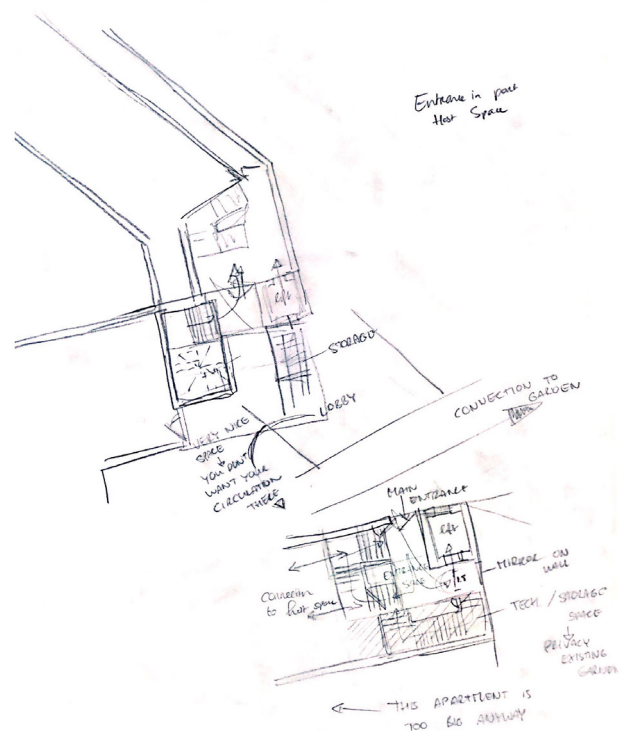
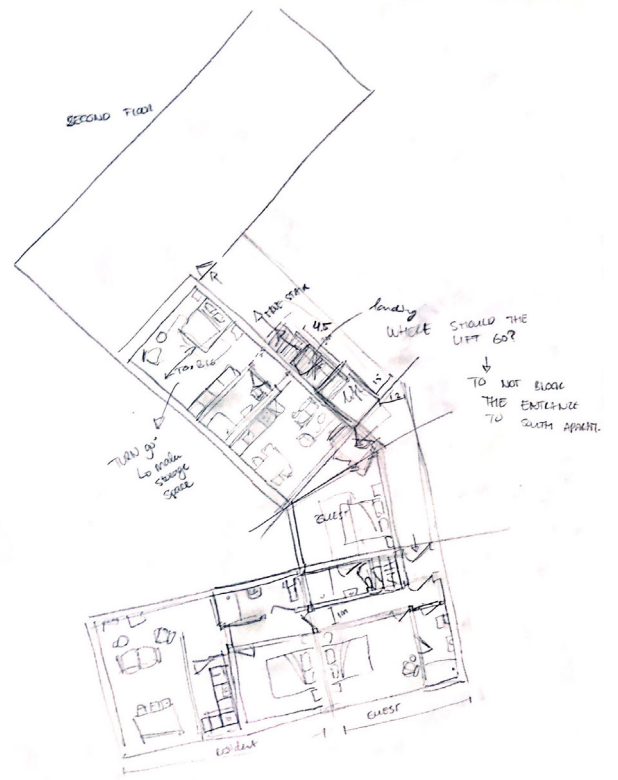
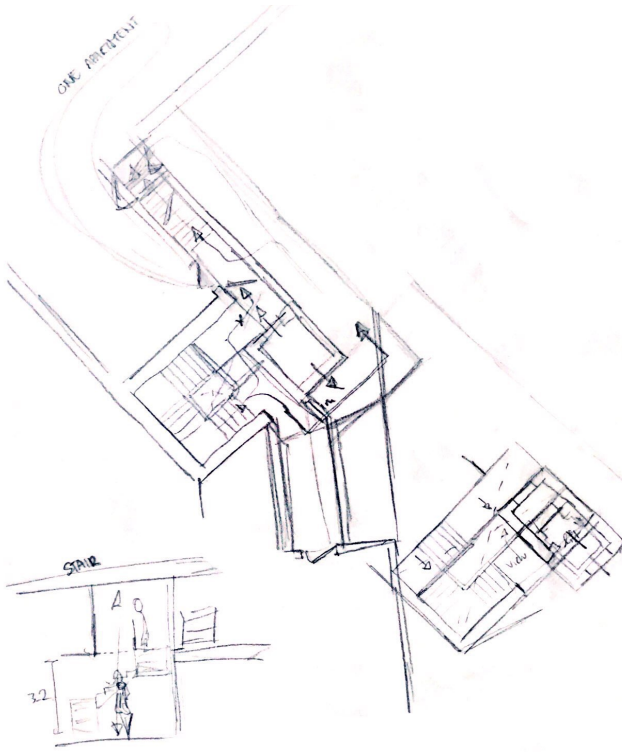
STAIR ON THE
'OUTSIDE'



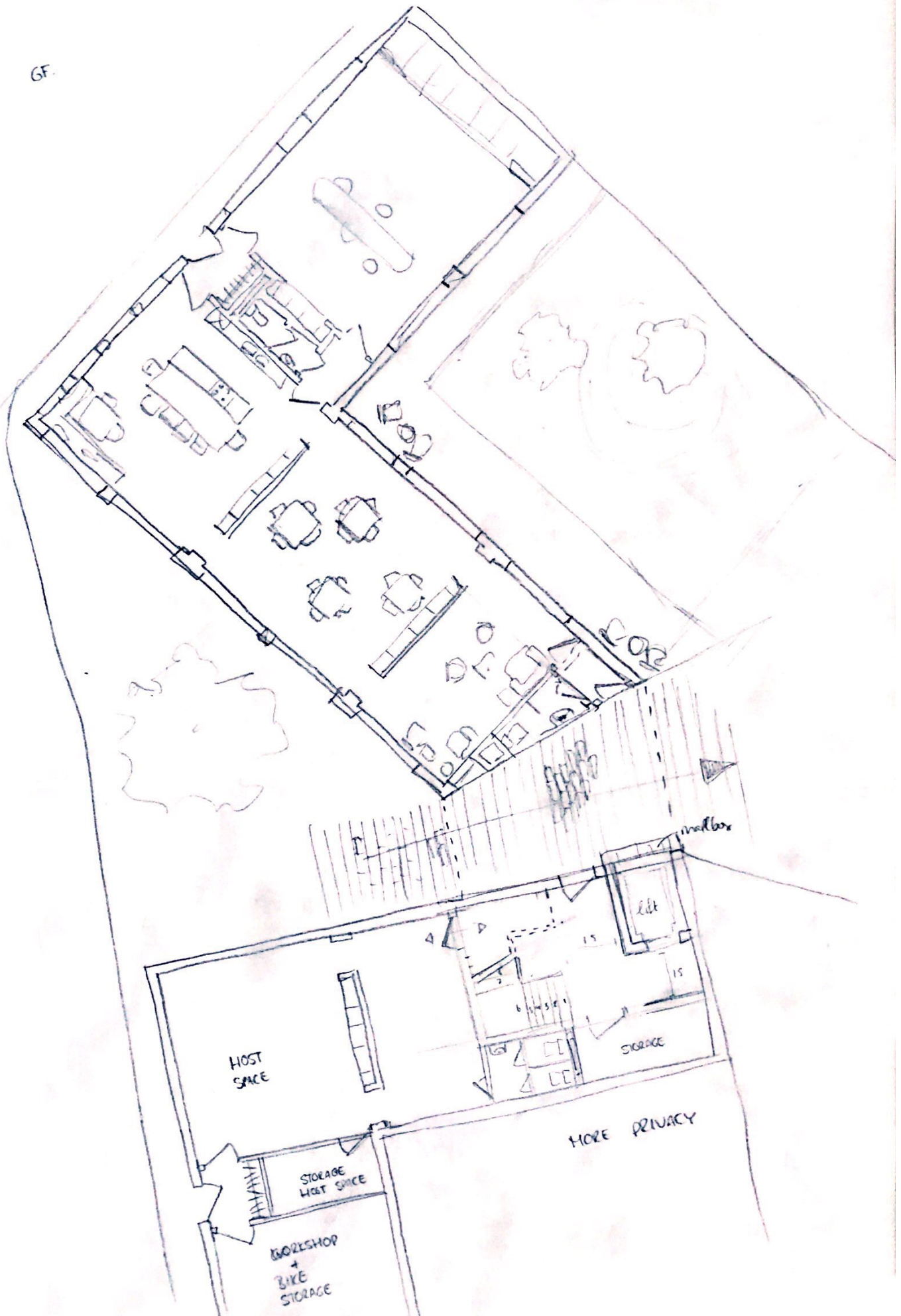
GALLERY ON THE
OUTSIDE
→ BALCONY
FUNCTION



CREATING A LONG
ONE-BEDROOM
APARTMENT + GUEST ROOM

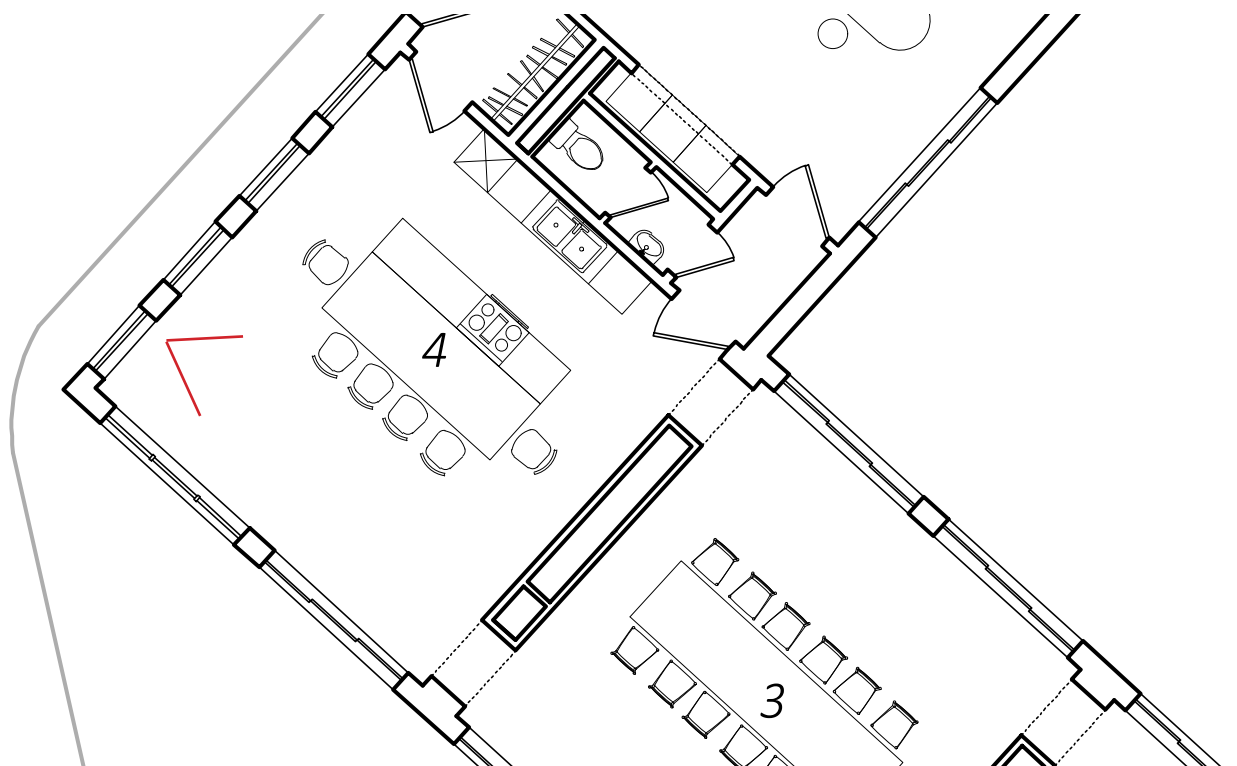


GF

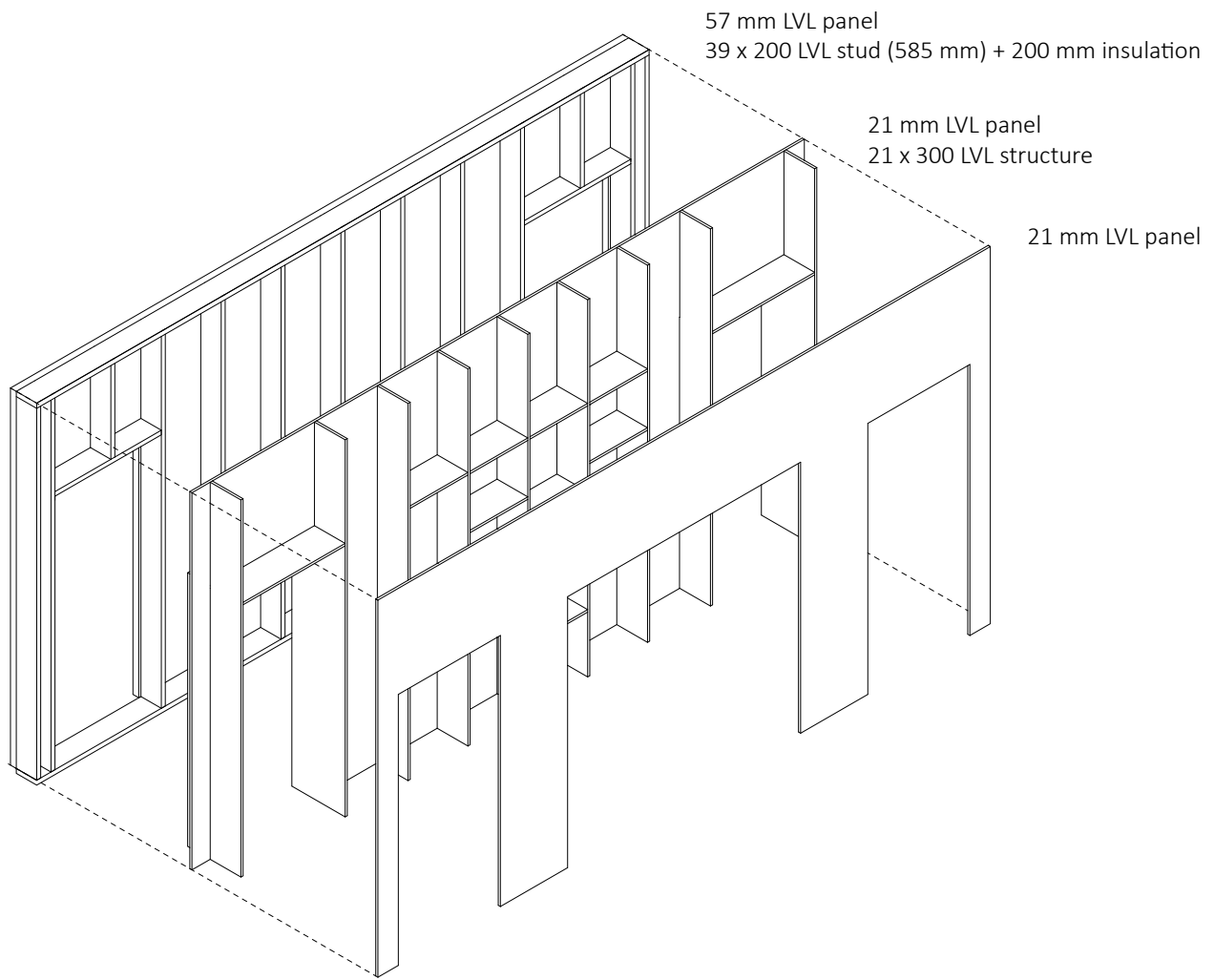




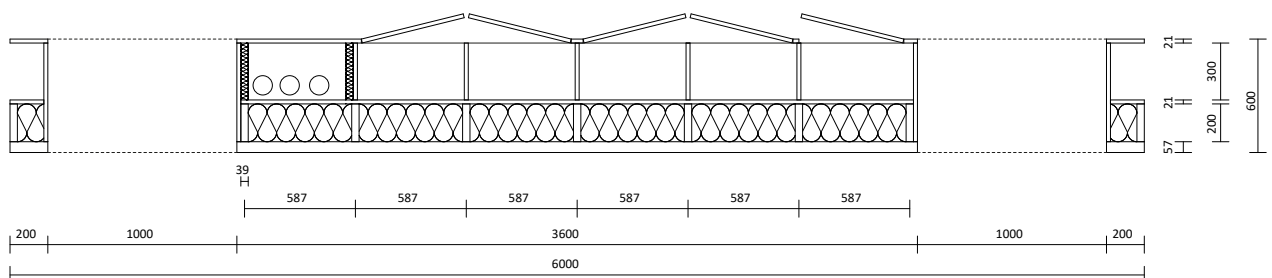
SKETCH KITCHEN, SHOWING THE USE OF THE ENFILADE



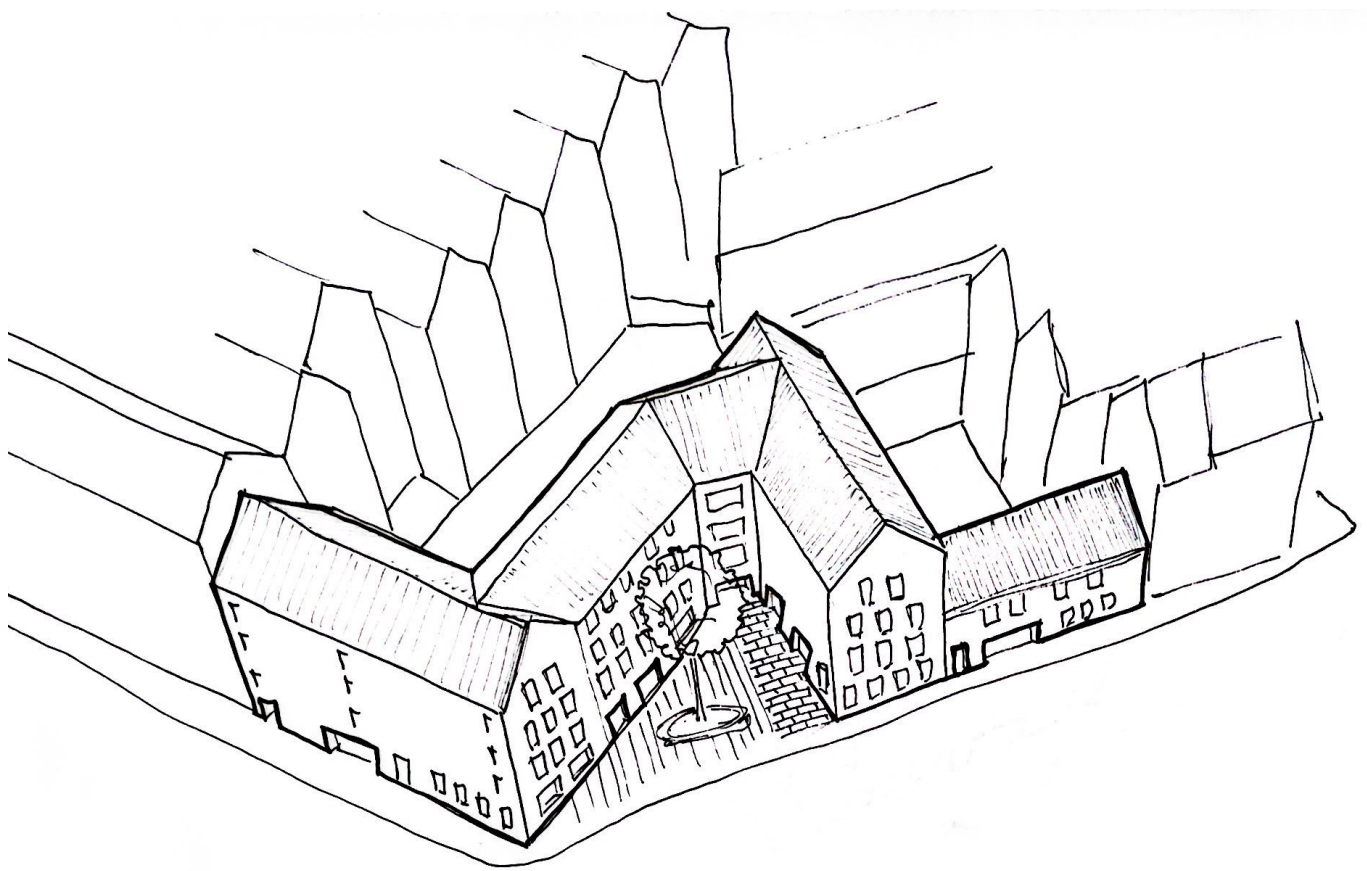
FLOORPLAN KITCHEN _ ANNOTATION SKETCH

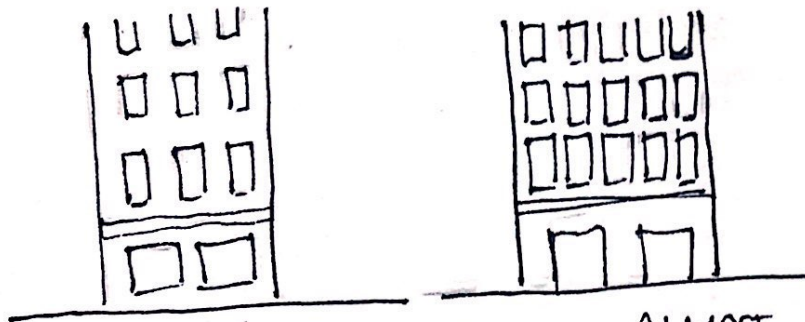


EXPLODED AXONOMETRIC ENFILADE



HORIZONTAL SECTION LOADBEARING ENFILADE





COLUMN / BEAM
STRUCTURE. but it's
still a wall

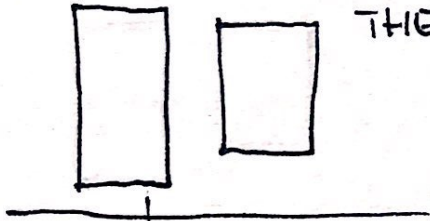
WINDOW IN A WALL

ALMOST AS A FRAME

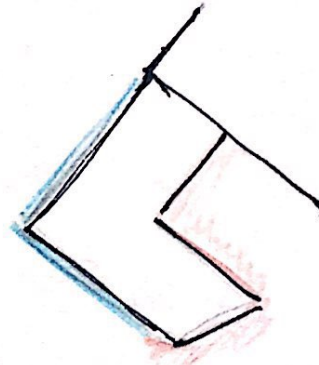
HOW CLOSE CAN YOU GET THE WINDOWS?

↓
traditional Facades.
PLAY WITH THE MARGIN

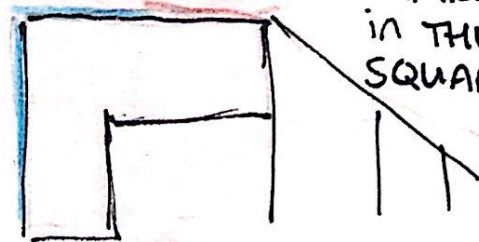
CHANGE OF SCALE IN
THE FACADE



just not touching
the ground



LET THE
ARCHITECTURE
OF THE
COURTYARD
APPEAR AROUND
THE
STAIRCASE
IN THE
SQUARE



↔
DIFFERENT SCALE OF OPENINGS

Week 4.2

Rethinking the floorplan _ change the circulation

Rethinking the floorplan _ connecting the square and the garden

Rethinking the floorplan _ always have the host and the guest connected on the same floor

Rethinking the floorplan _ fitting in more units

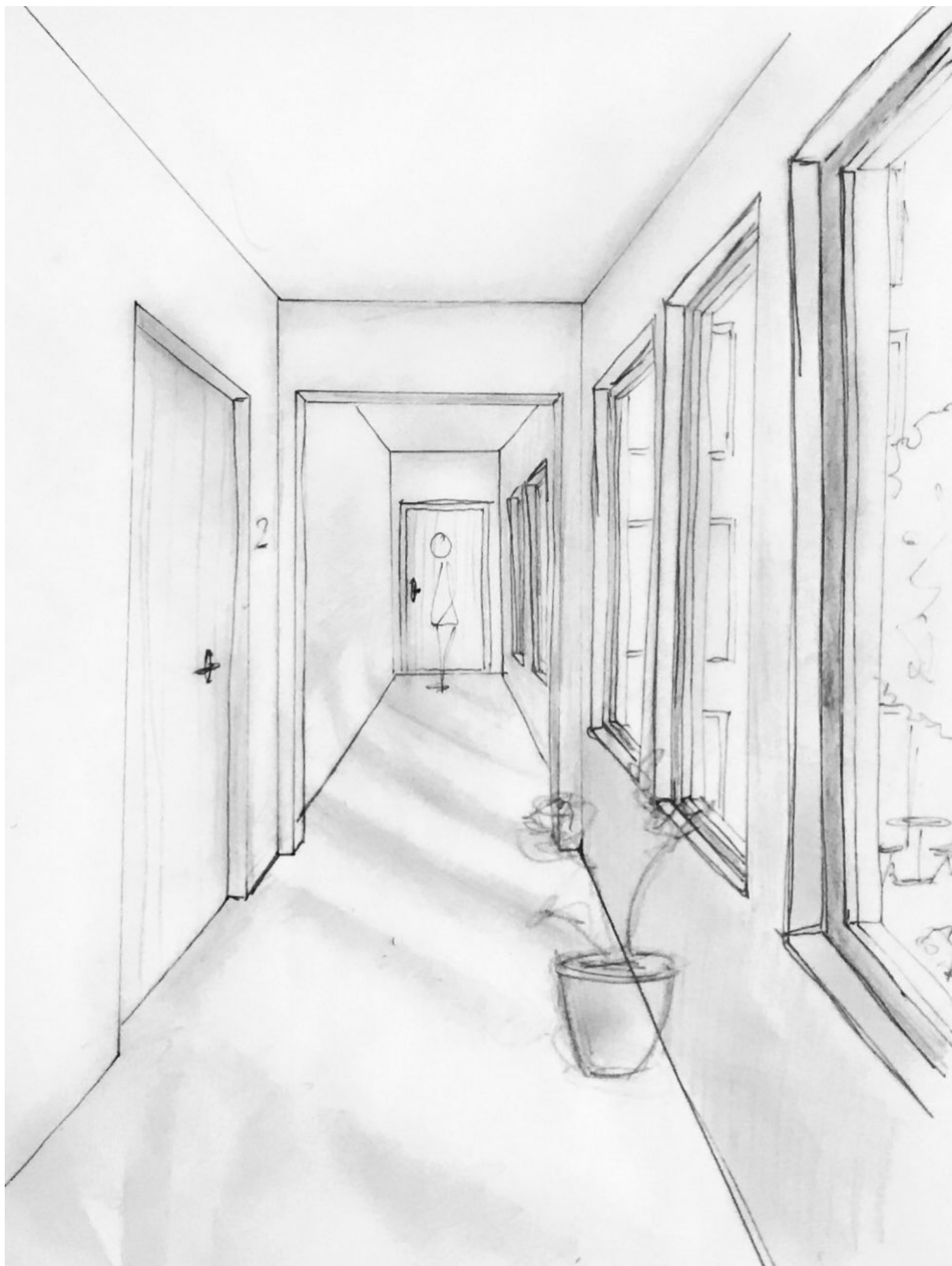
Brief _ change 7 units into 9

Facade _ scale and rhythm

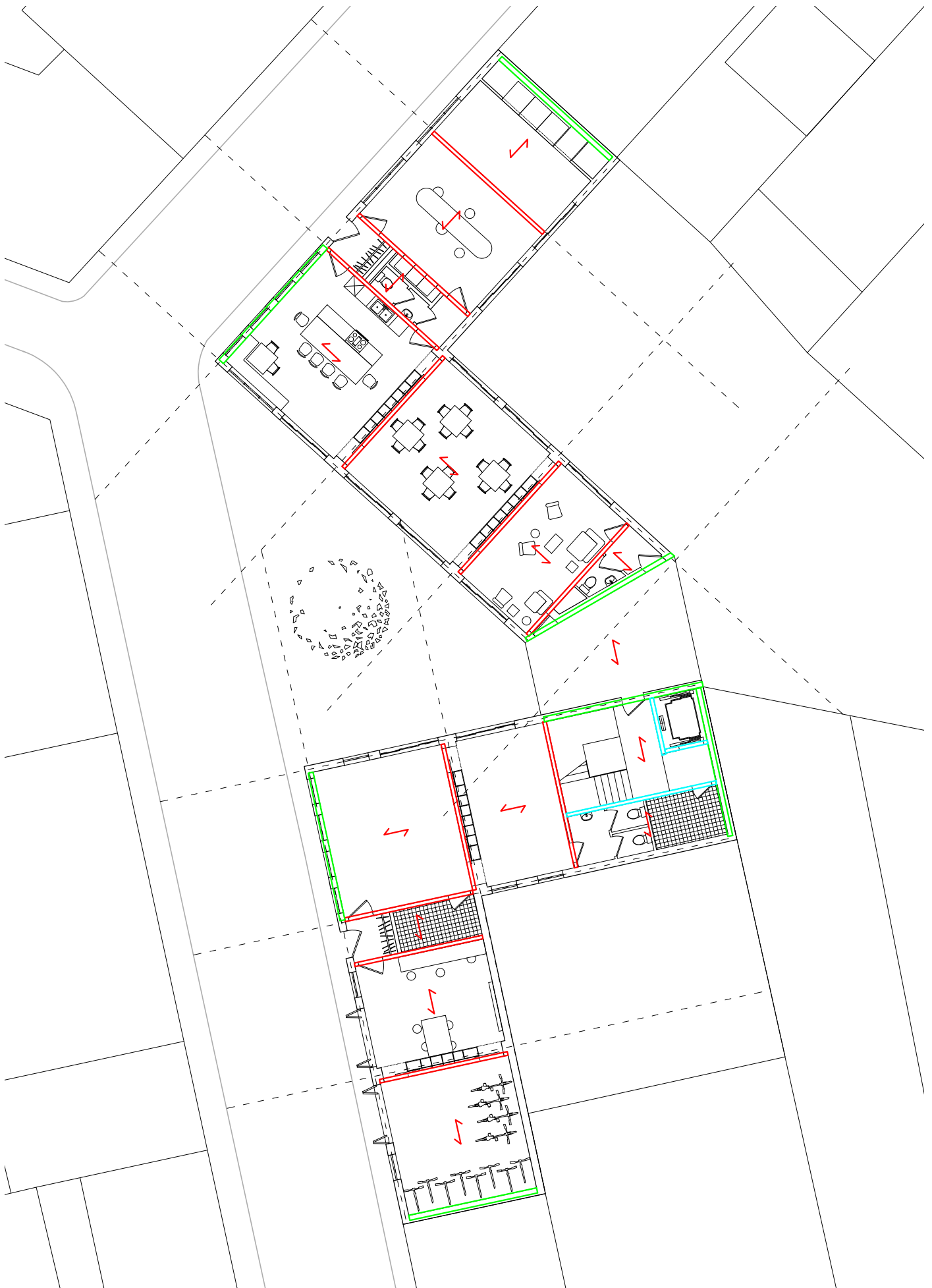
Structure _ defining structural elements

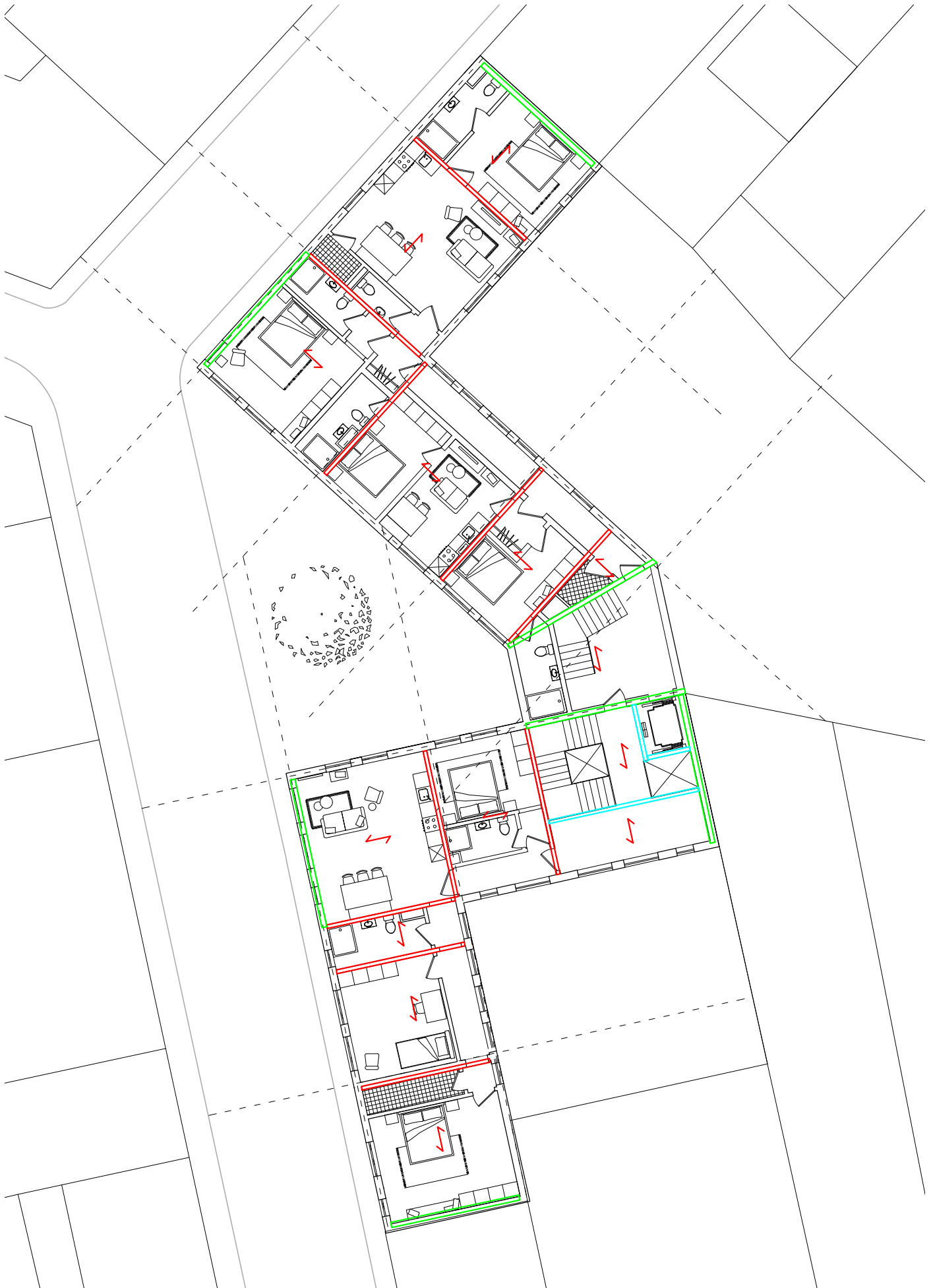
Structure _ the role and detailing of the enfilade

Structure _ timber platform frame construction for exterior walls









Structure

Questions structure

What is the difference between a loadbearing and a non loadbearing timber frame?

Is it weird to have a hybrid between CLT and timber frame construction?

Are the Kerto-Ripa floors efficeint in my design? Because the spans differ a bit every time. Is it maybe better not to use a prefabricated floor?

Do I need ore horizontal bracing in my timber frame?

Kerto-ripa floor

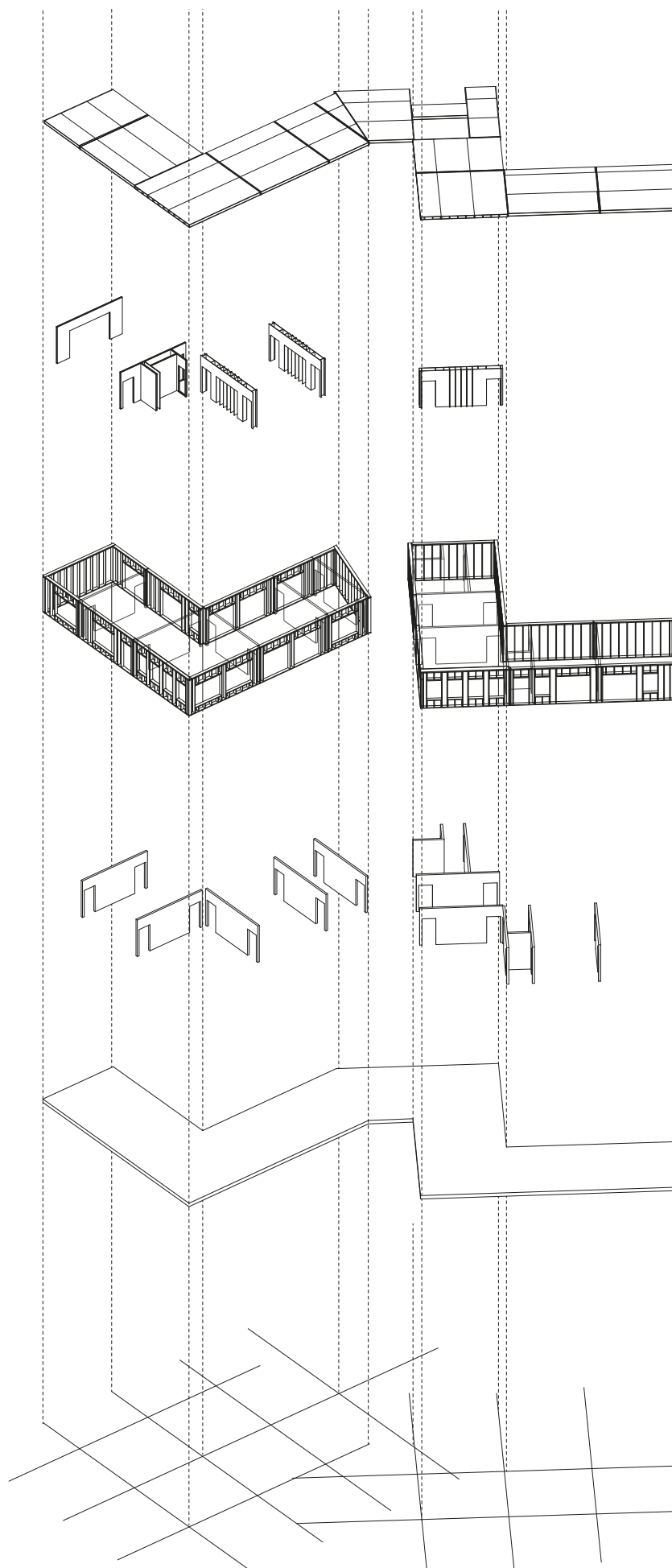
interior walls

*timber platform frame
exterior walls*

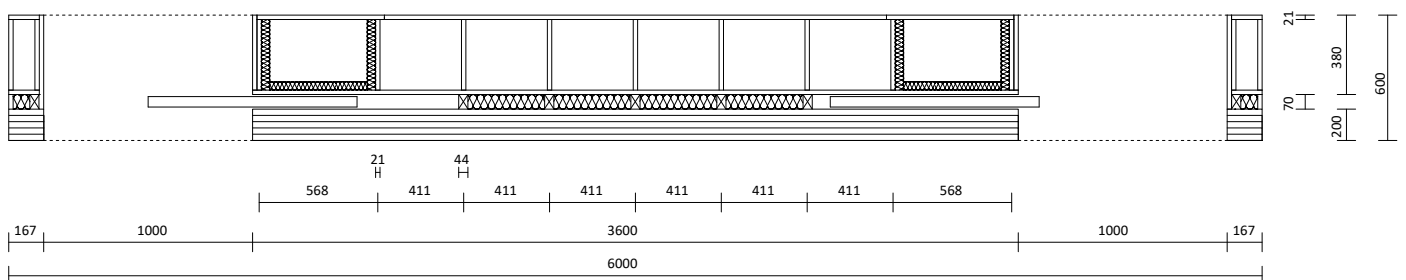
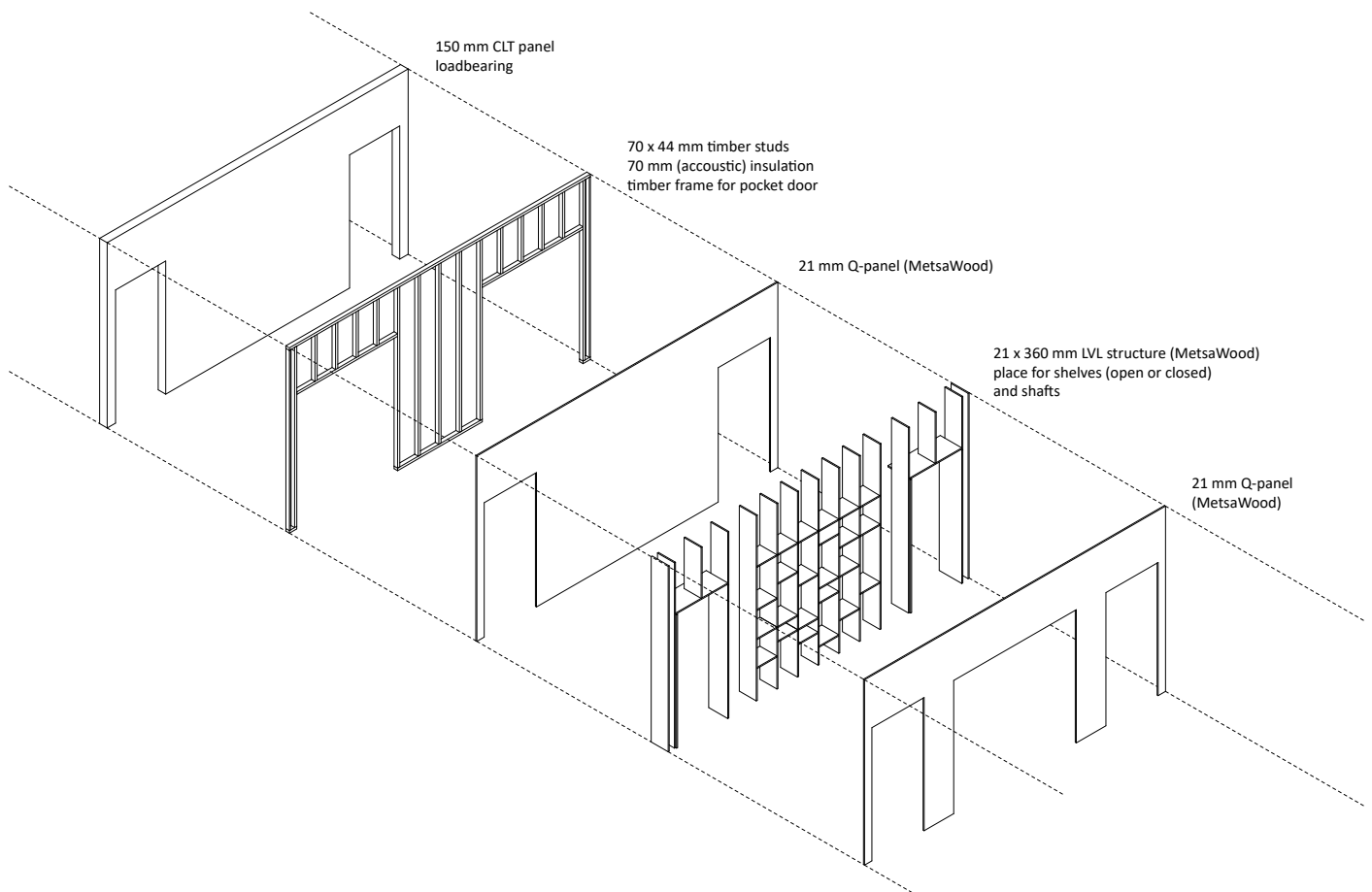
loadbearing CLT-walls

floor

grid



CLT ELEMENT



Week 4.3

Rethinking the floorplan _ change the circulation

Rethinking the floorplan _ connecting the square and the garden

Rethinking the floorplan _ always have the host and the guest connected on the same floor

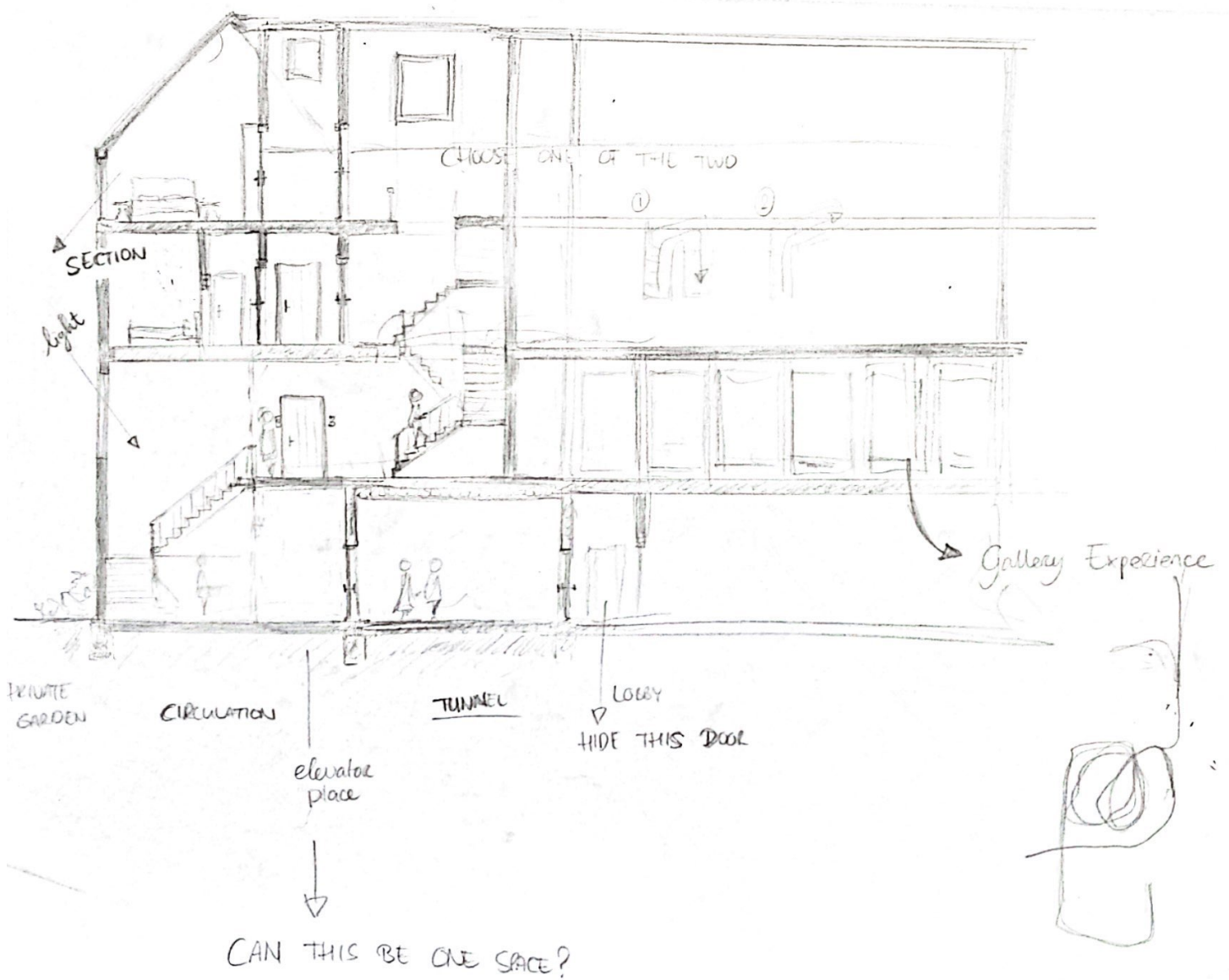
Rethinking the floorplan _ fitting in more units

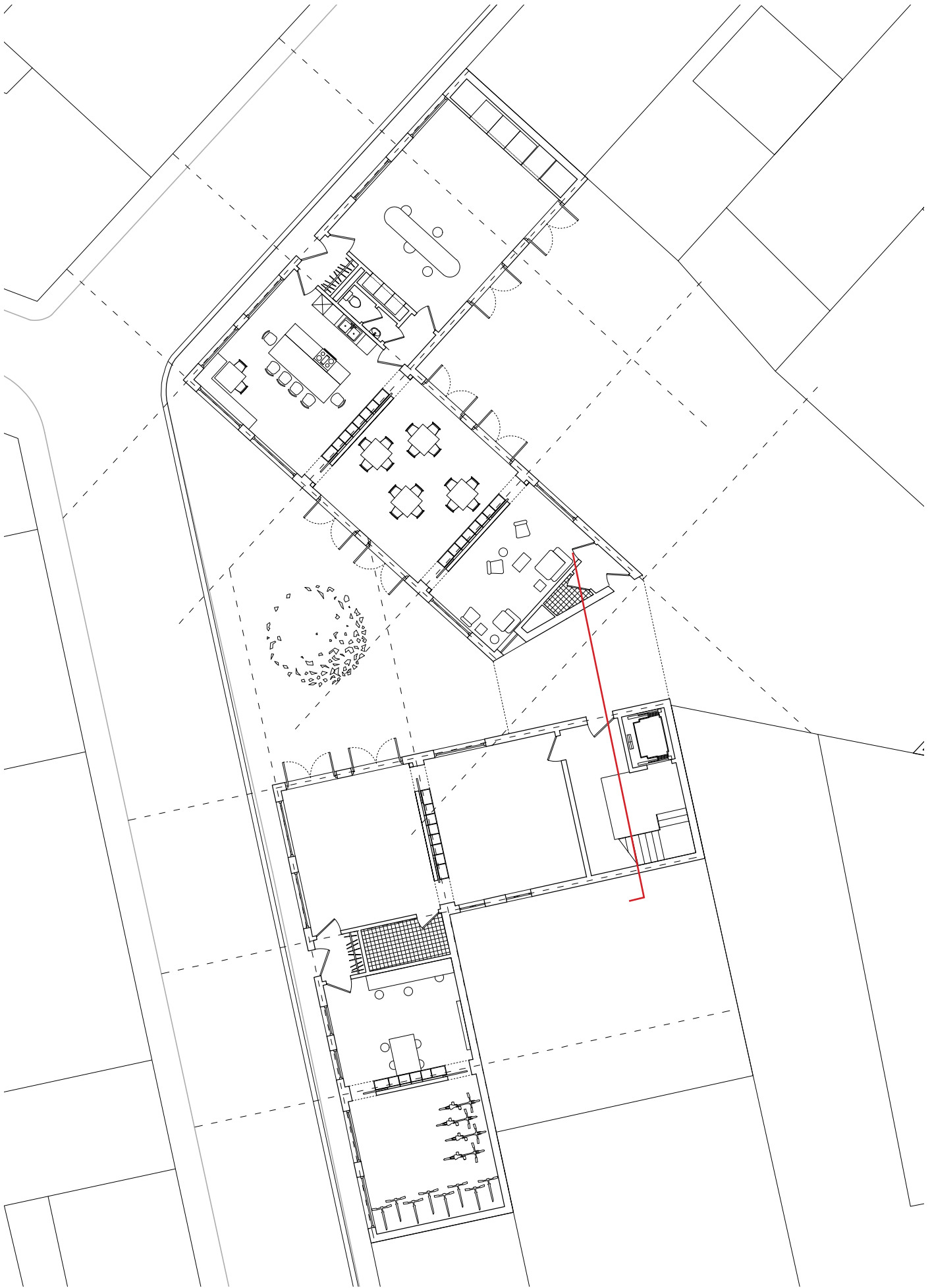
Brief _ change 7 units into 9

Interior one-bedroom apartments _ add sliding door for more spacious feeling

Facade _ scale and rhythm

Exterior spaces _ Square and garden





Earthy tones

MOODBOARD

Small spaces : linoleum flooring



Specialness and continuity

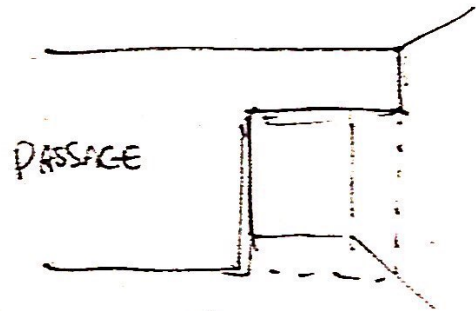
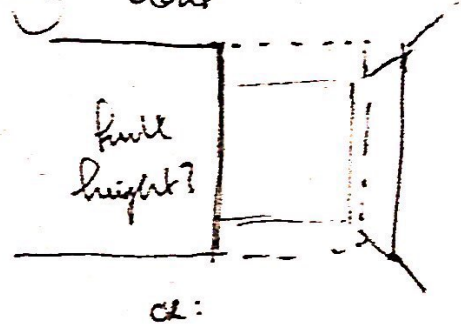
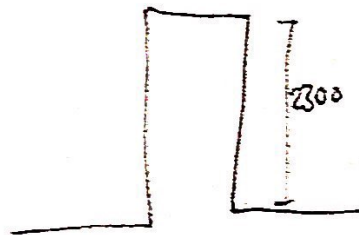
Walls : textured → Poetee's paints Bone with soapstone

Beech wooden doors and cabinetry

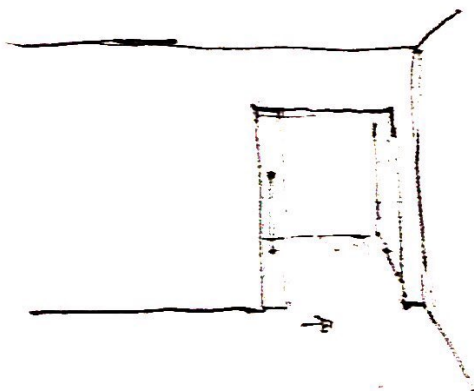
Sisal rugs

Linen furnishing

Language of openings & sliding doors



→ This are



continuous look



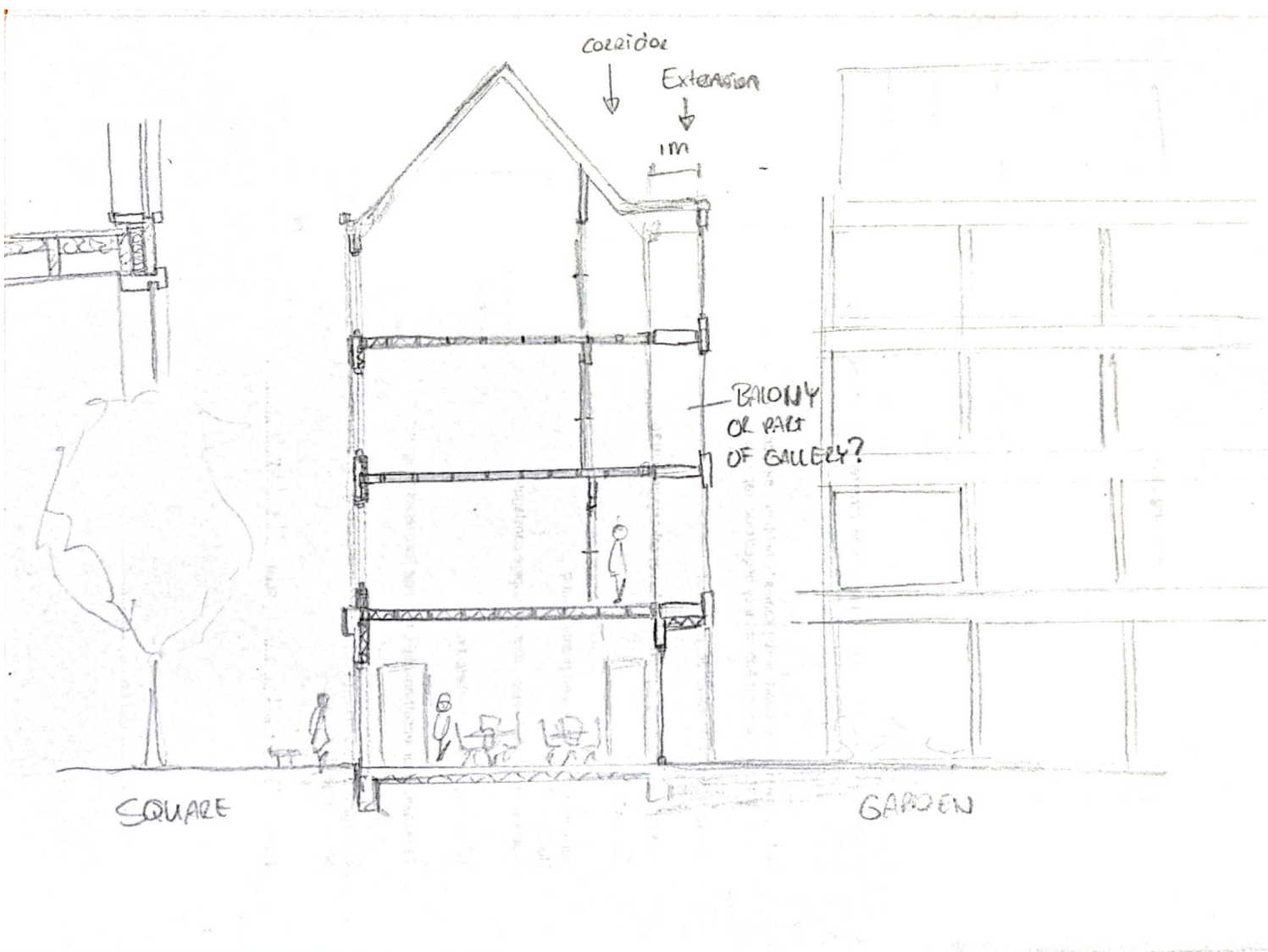


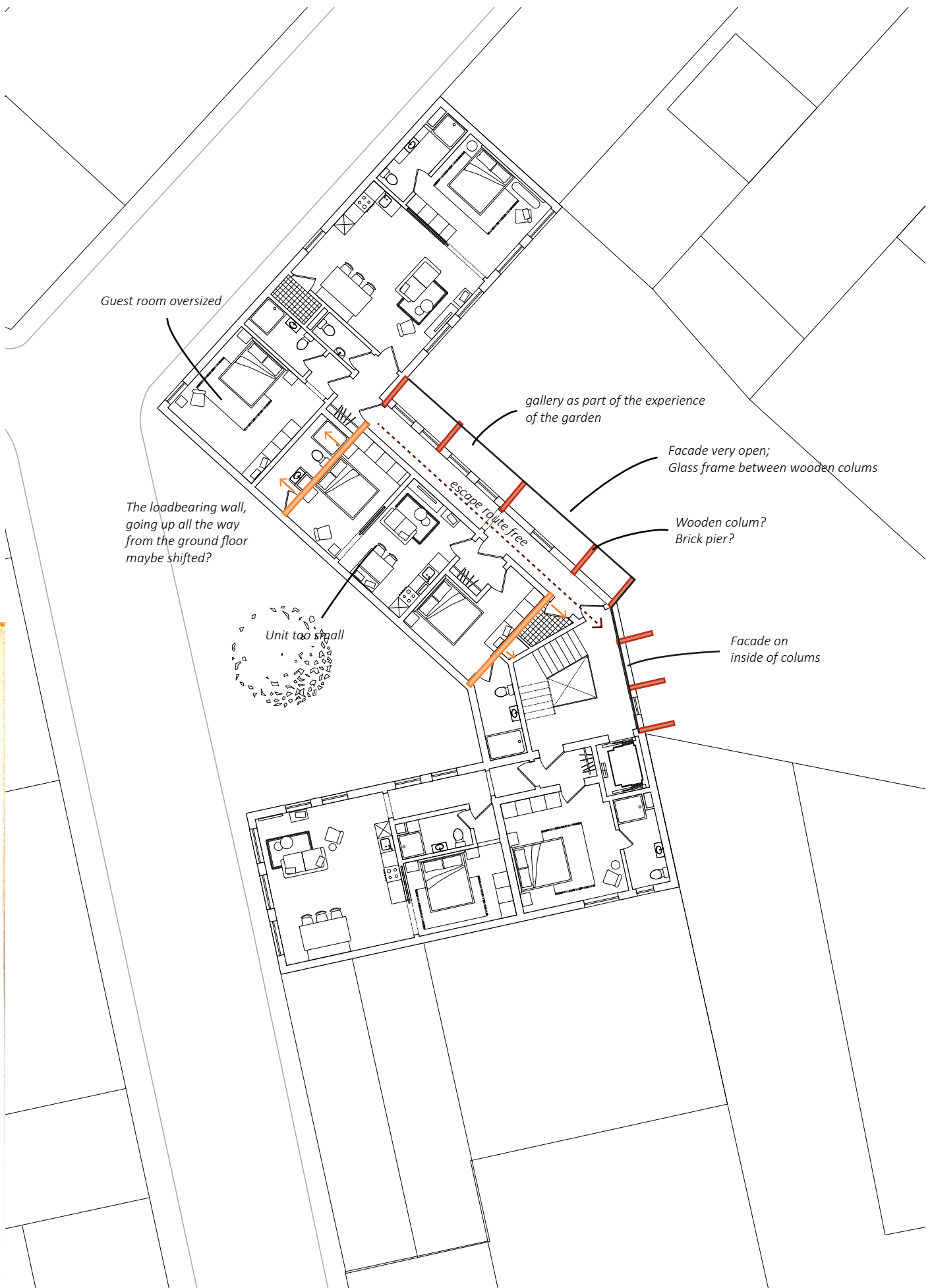
Making the corridor wider

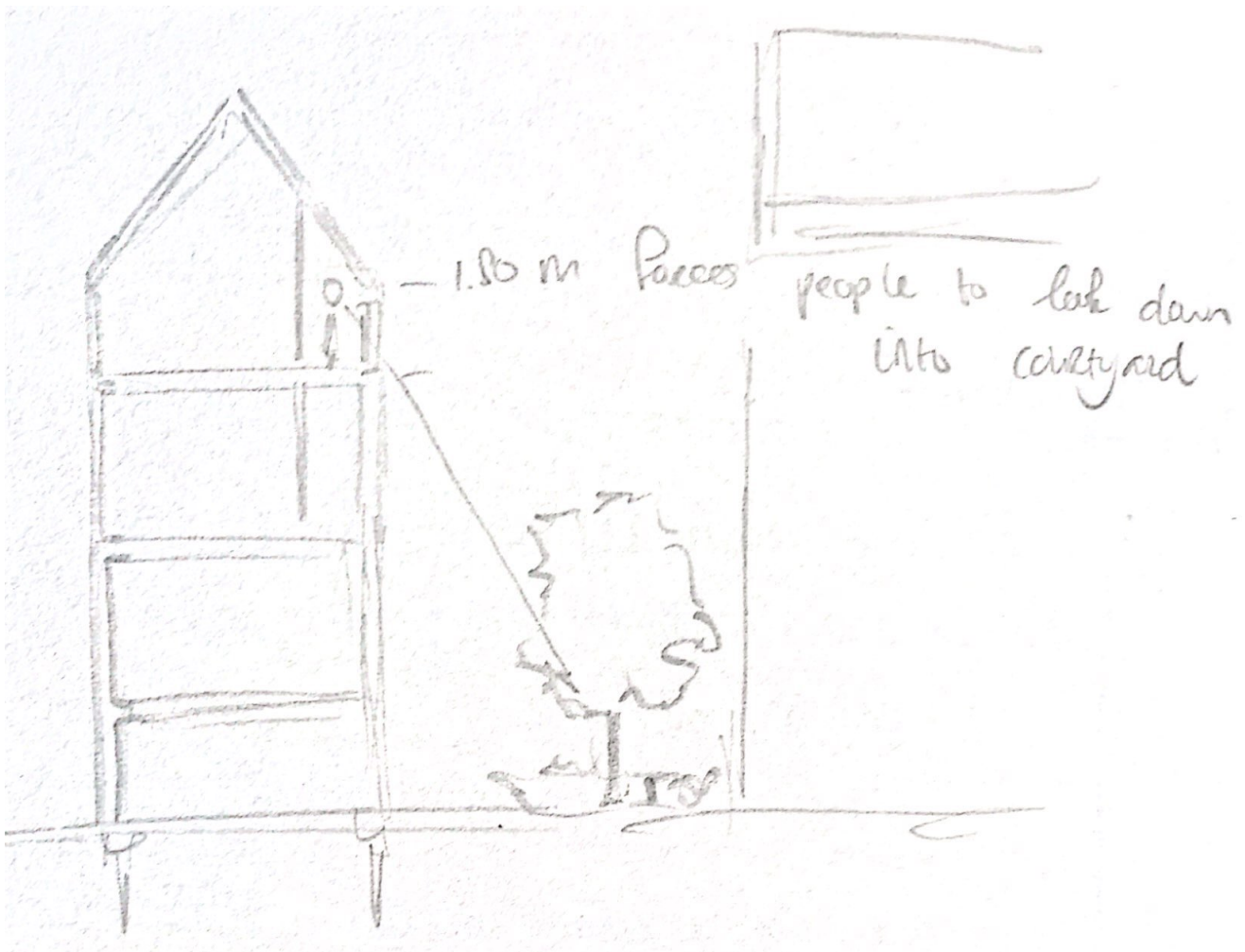
What are the consequences for my structure???

Where is inside/outside?

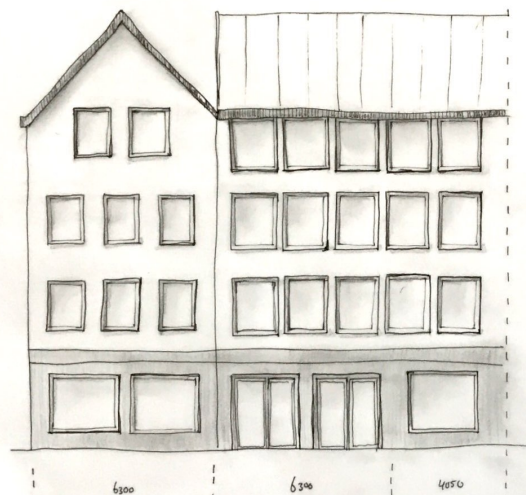
SKETCH _ CORRIDOR; JUST A CORRIDOR







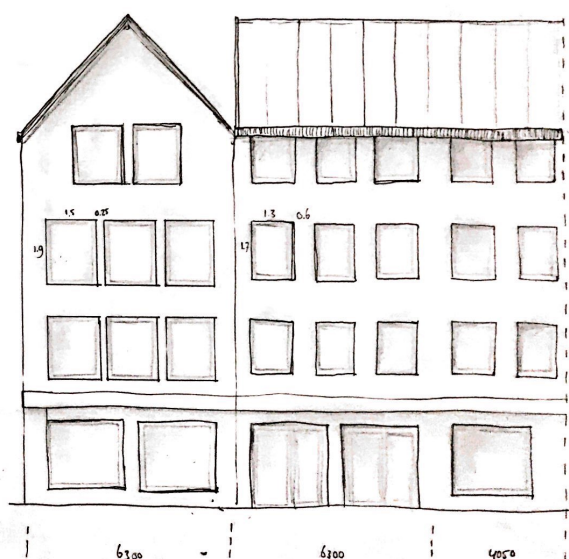




WINDOW IN A WALL

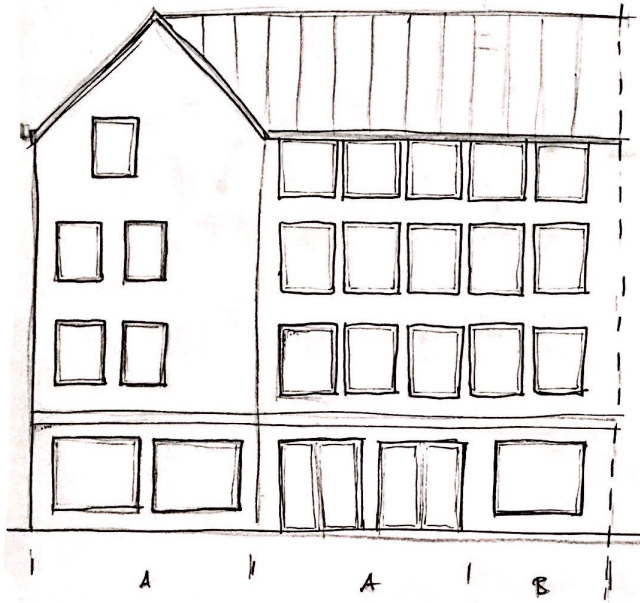
FRAME-LIKE

SHIFTED

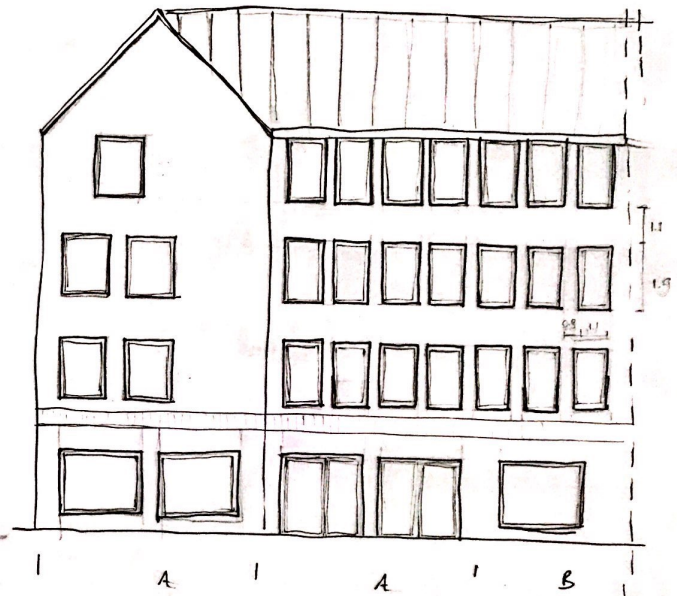


PROPOSAL SAM
BIGGER DIFFERENCE

30.04.21



OTHER SCALE OF WINDOWS



COMBINING THE WINDOWS
INTO A HORIZONTAL STRIP

30.04.21



COLUMN/BEAM STRUCTURE 01.05.21

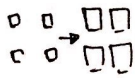
ALMOST FULL-HEIGHT WINDOW



EVEN SMALLER GRID 01.05.21



NUANCES



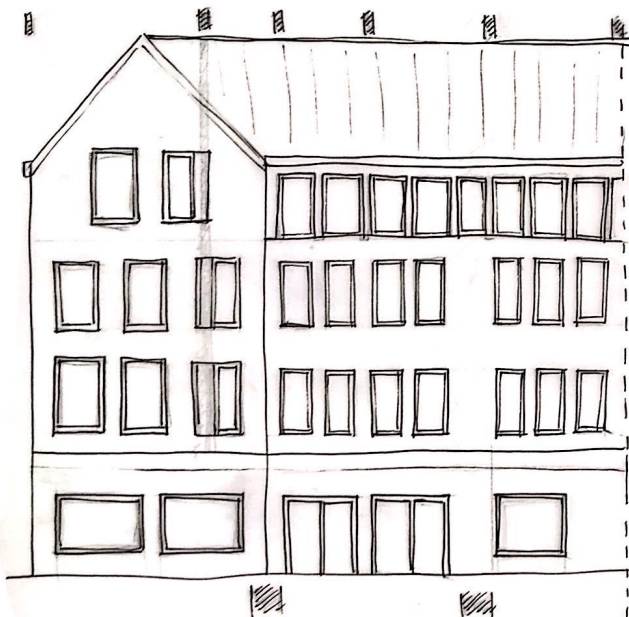
Are the windows too big?
Create an extra layer

All spaces between window
are equal
Horizontal & Vertical

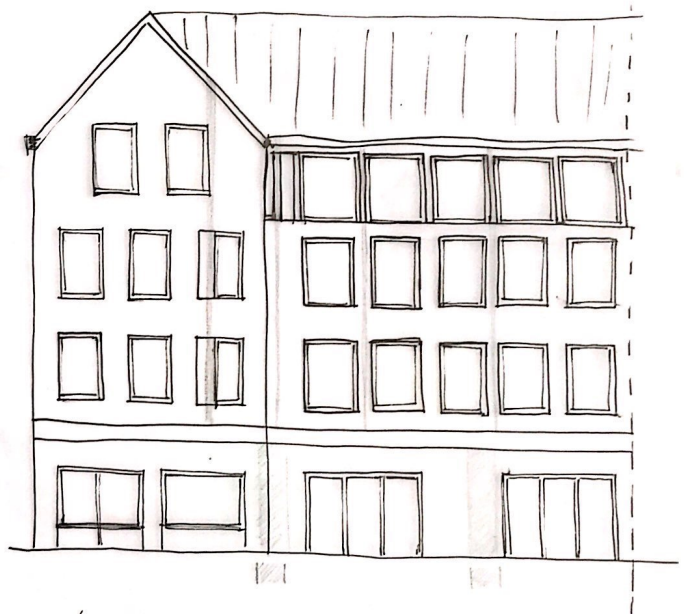
TAKING INTO ACCOUNT PARTITION WALLS
03.05.21

WALL RHYTHM

Partition
↓ ↓



ENFILADES



'IGNORING THE PARTITION WALLS
03.03.21



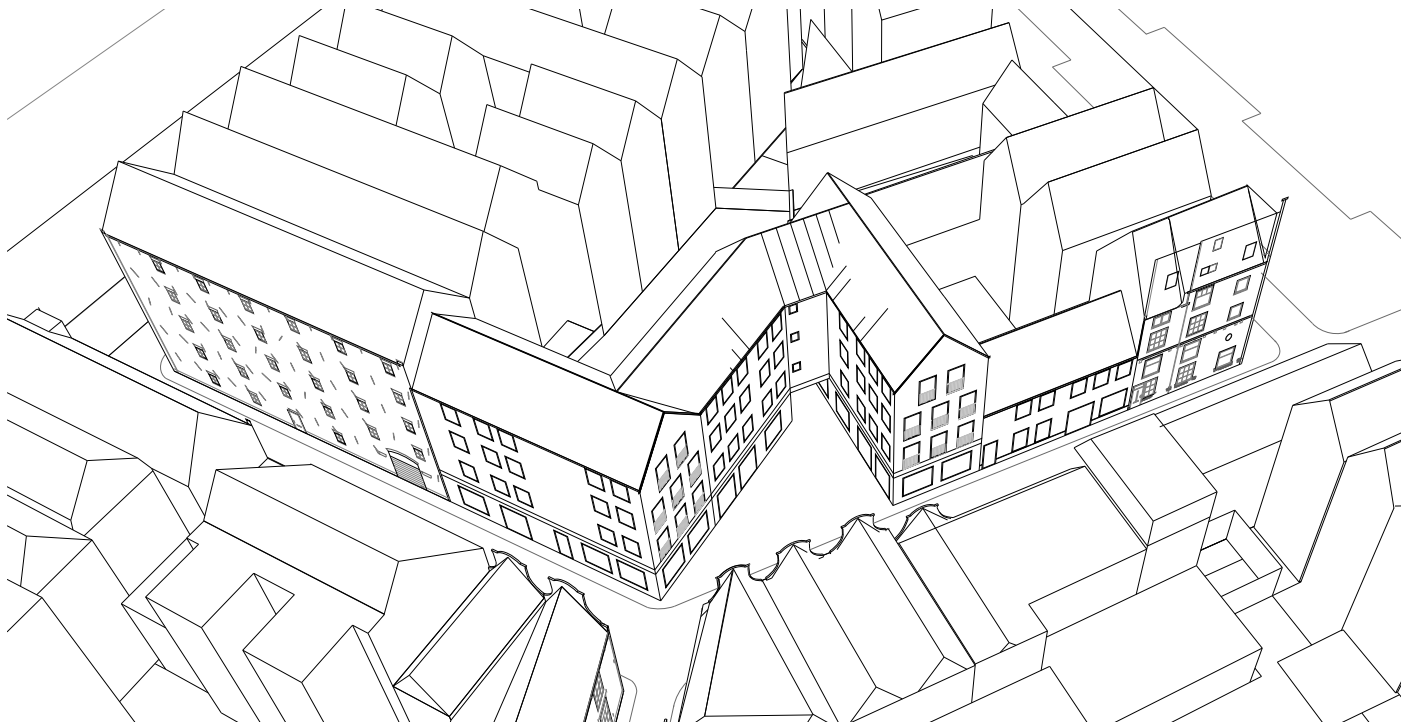
HORIZONTAL WINDOWS WITH VERTICAL PATTERNS
03.03.21

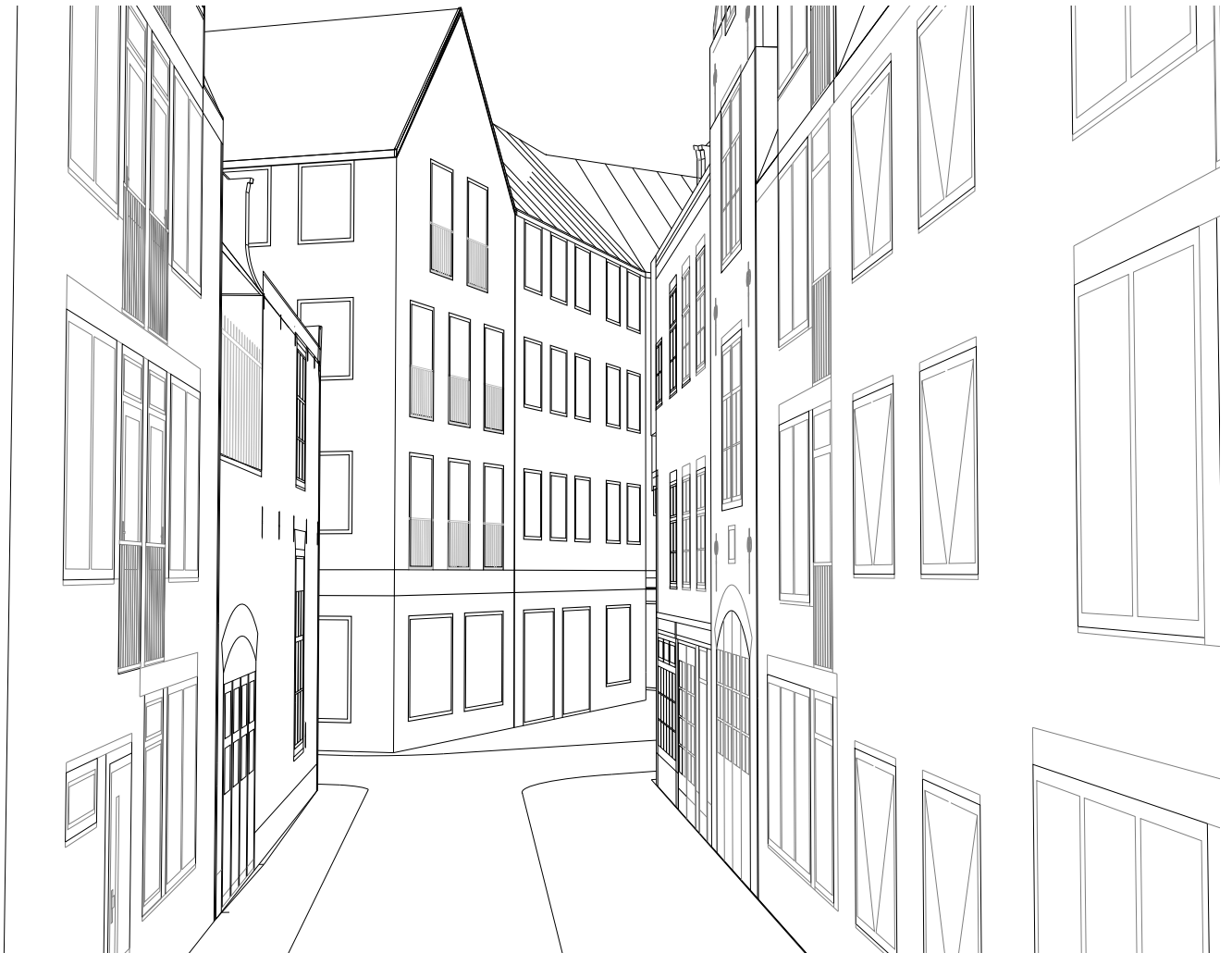


BAND OF WINDOWS



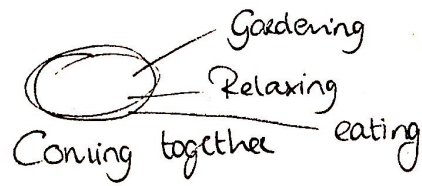








REQUIREMENTS

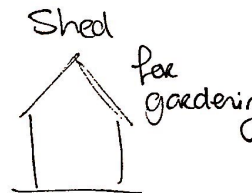


Filter

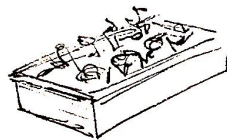
Between existing and new



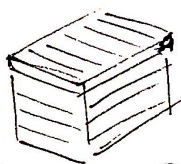
Room to play



Shed
for
gardening



Vegetable Garden



Composting Bin



Green

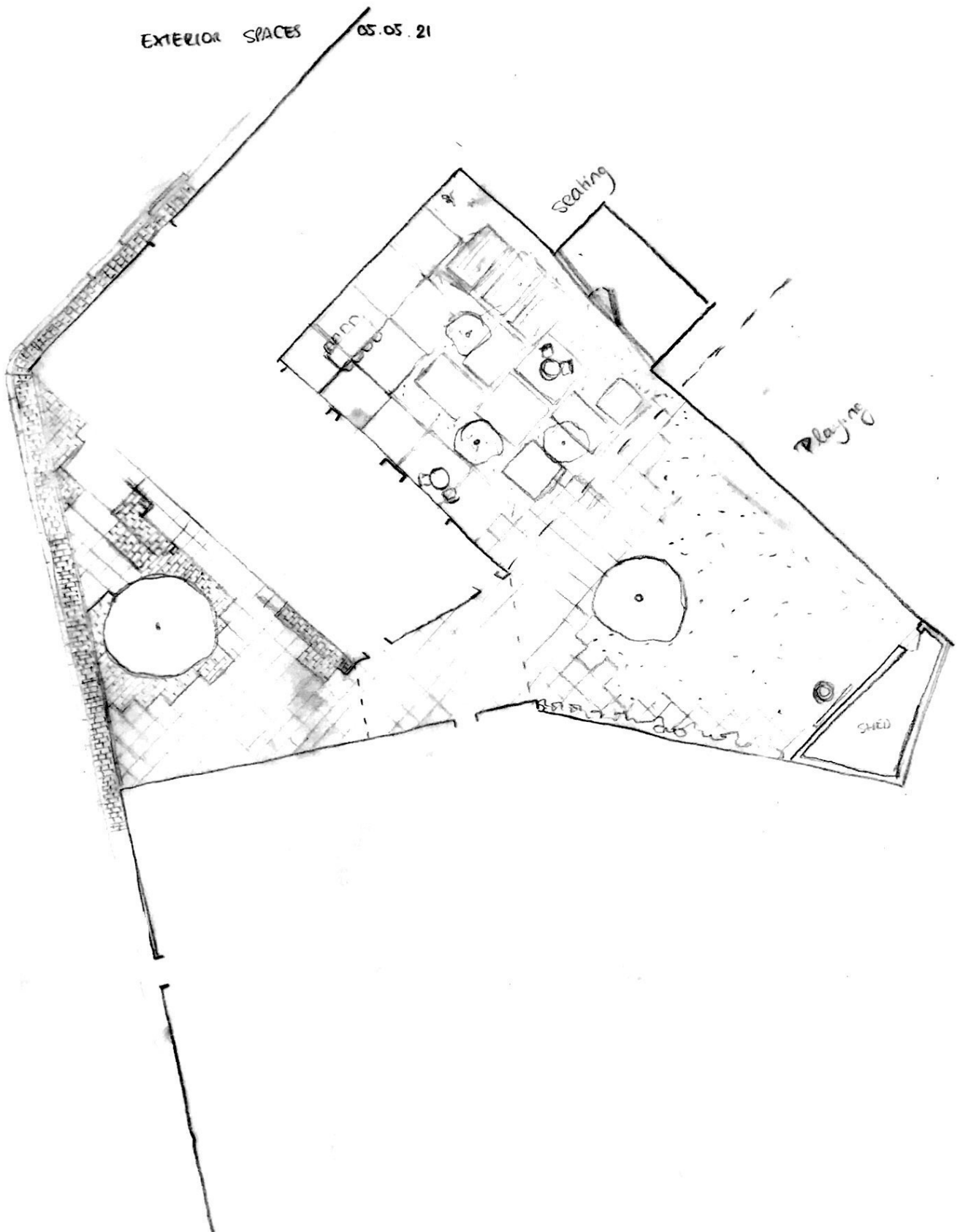
Garden design

Social component in the design
not private, not public either

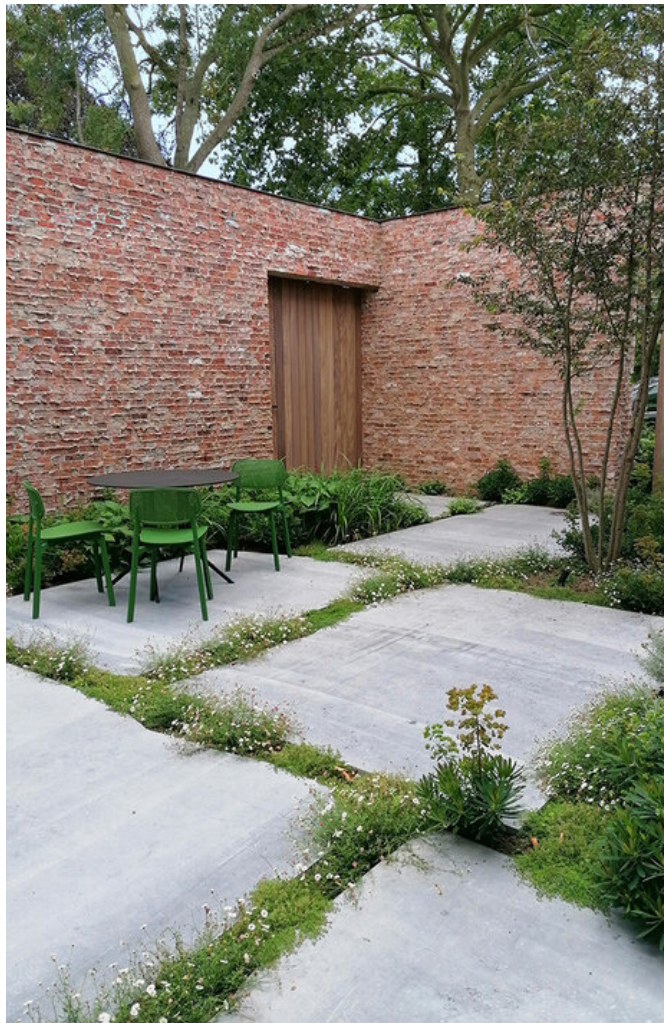
Anonymity of the city changes into collectivity

EXTERIOR SPACES

05.05.21







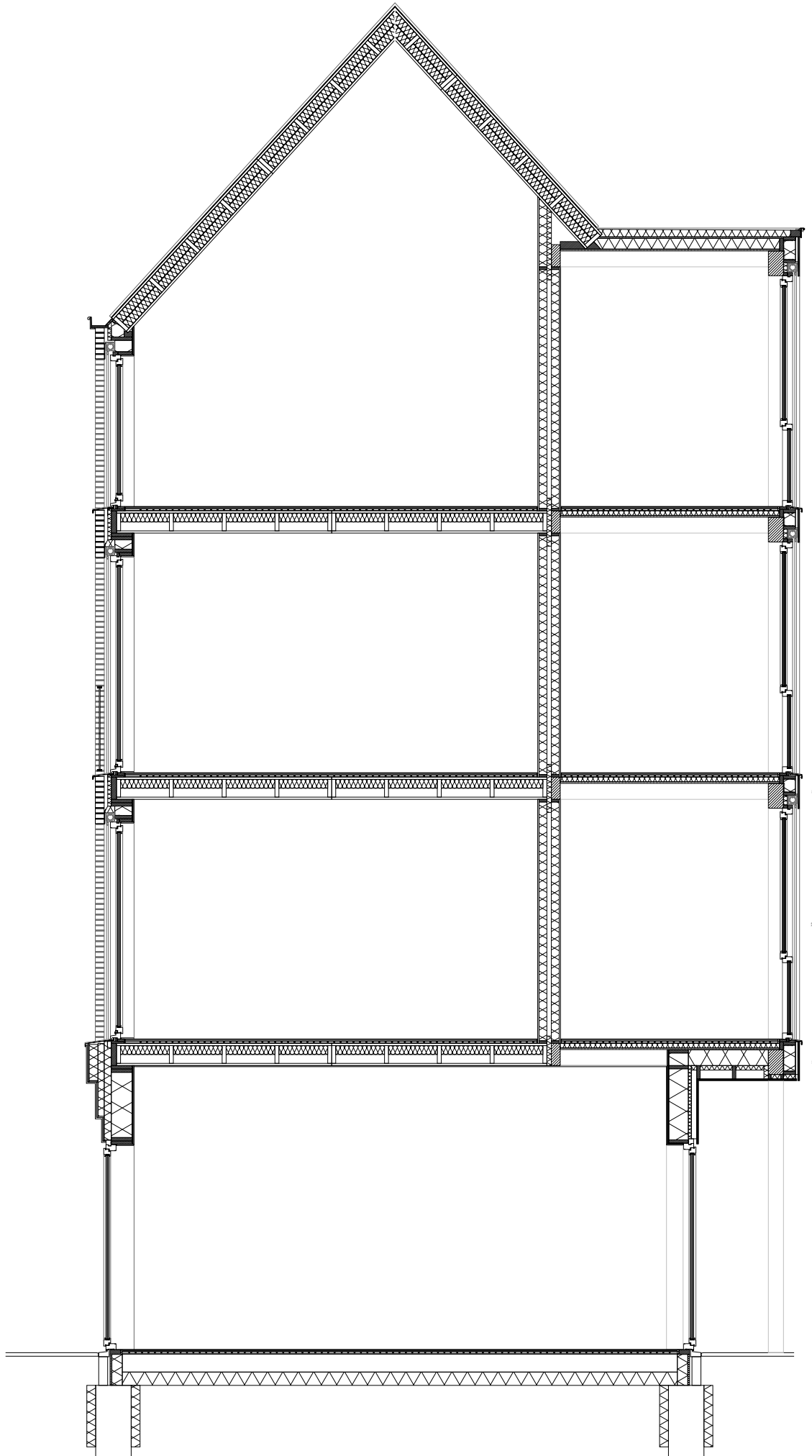
Week 4.4

Circulation _ as an object

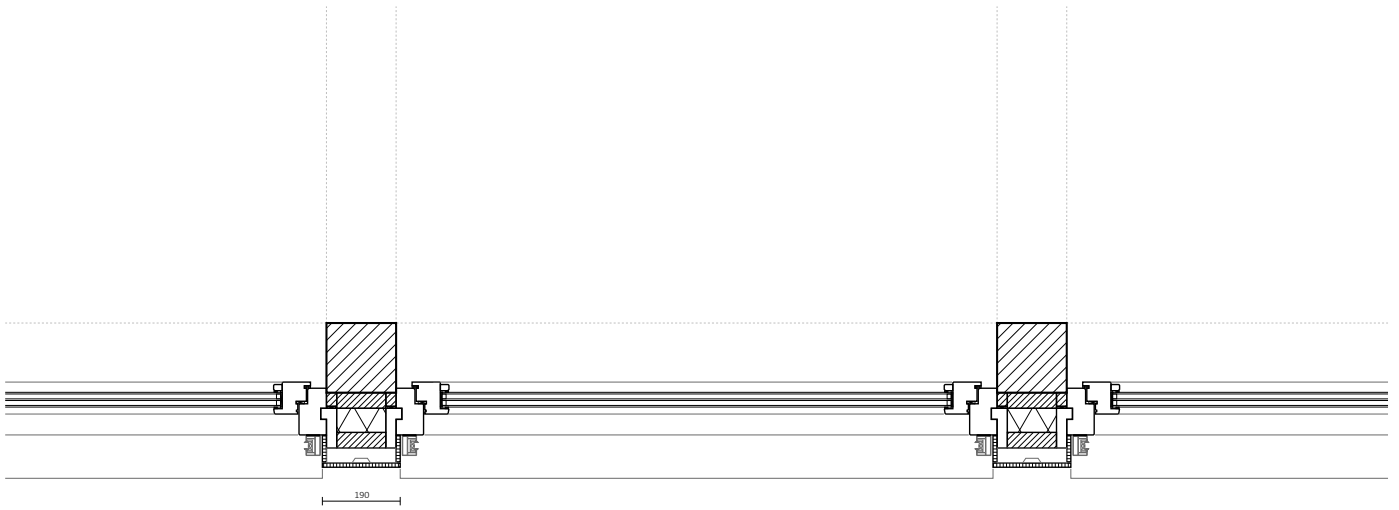
Circulation _ adding the gallery

Floorplans _ make units more equal

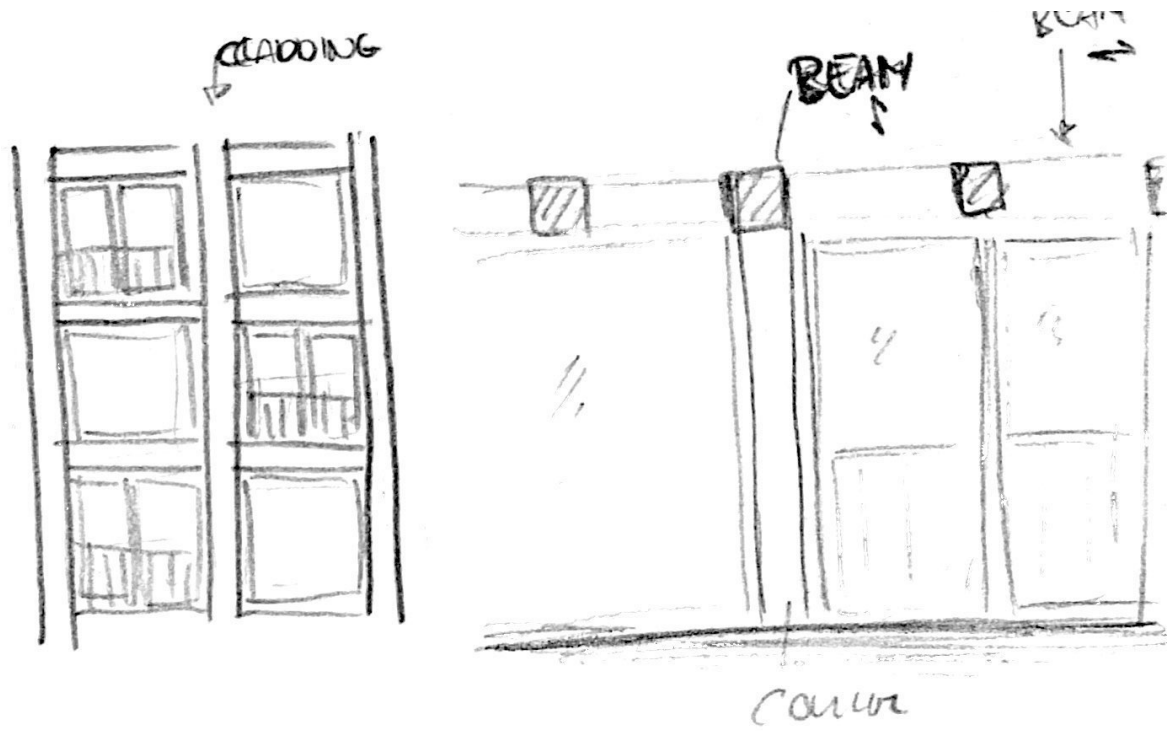
Facade iterations _ where to open up more?



SECTION SQUARE - BUILDING - GARDEN



HORIZONTAL SECTION GALLERY



8/8.
08.05.91



08.05.21

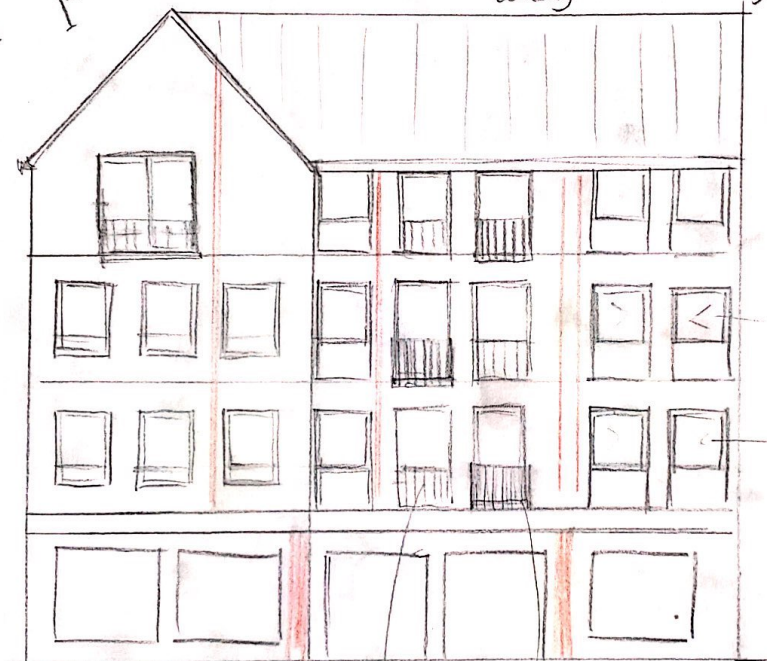
Can I have these windows?



Every apartment has one balcony - 1.3 m (very small)

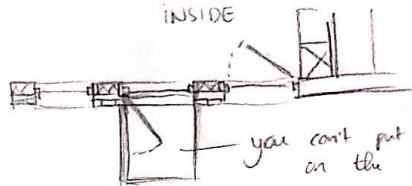
Not too much shadow on the ap. below

1.3
1.3



only the upper parts can move (bed is in the way for a door)

TURNING also?
INSIDE

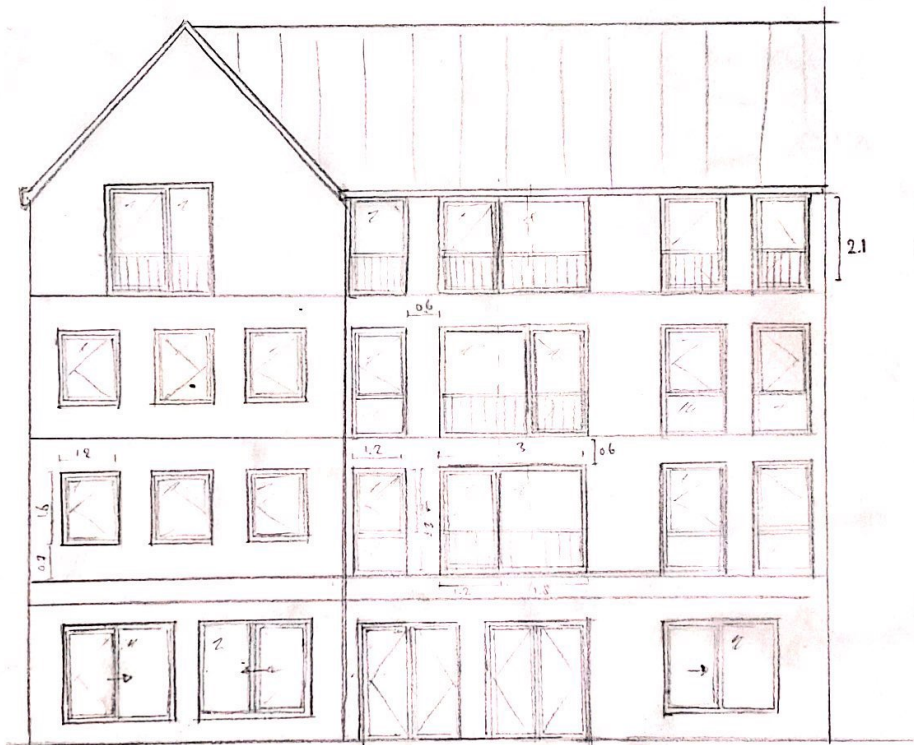


you can't put anything on the balcony

09.03.21

Small windows → Big balconies

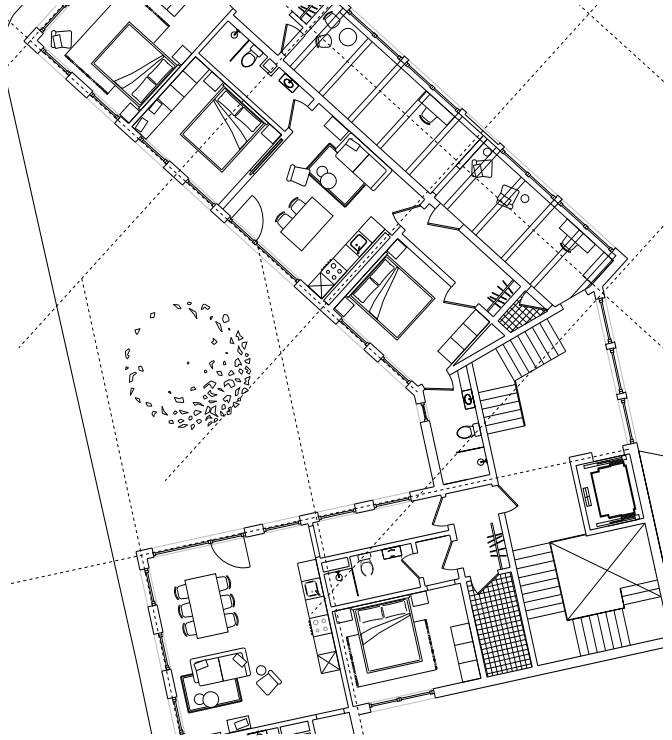
$$2.3 - 1.6 = 0.7$$



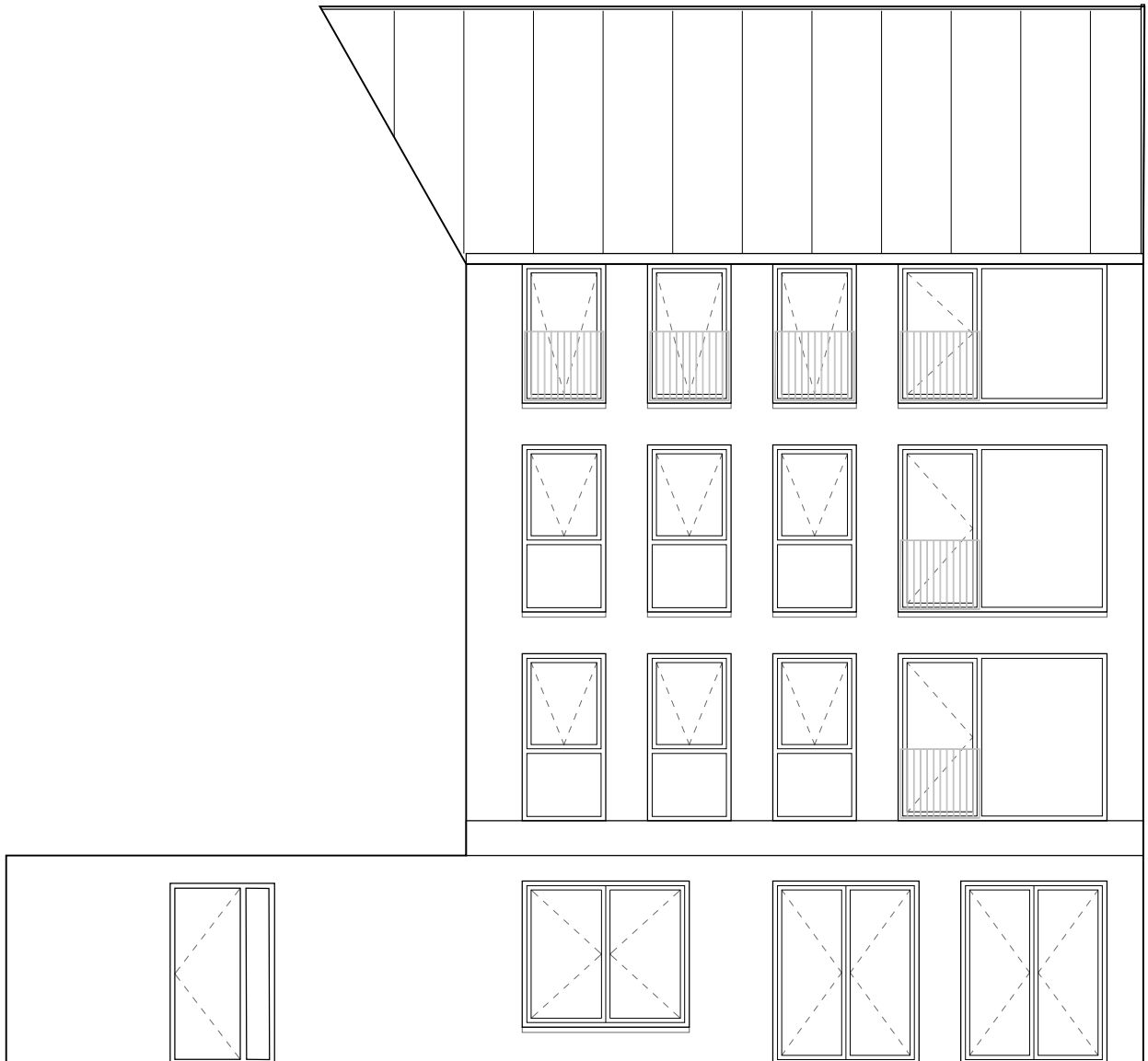
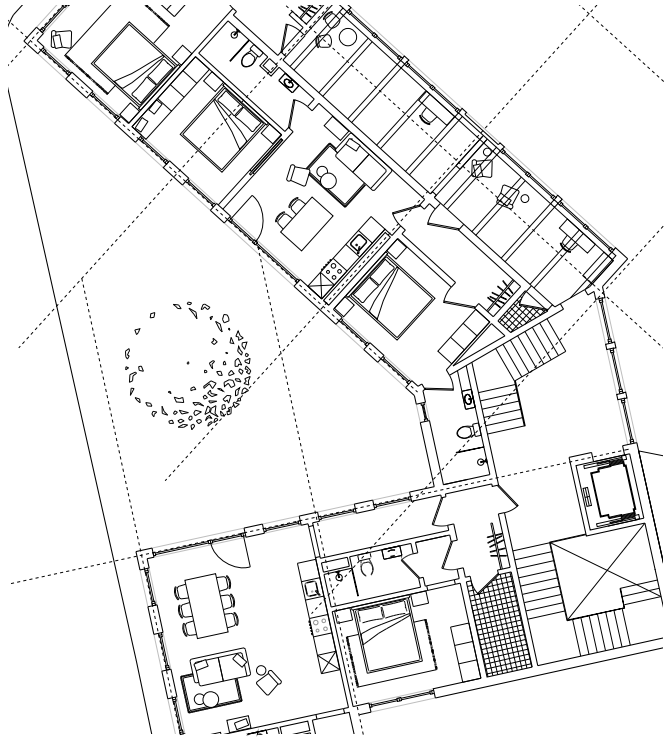
↓
Sliding windows to not block
to outside view

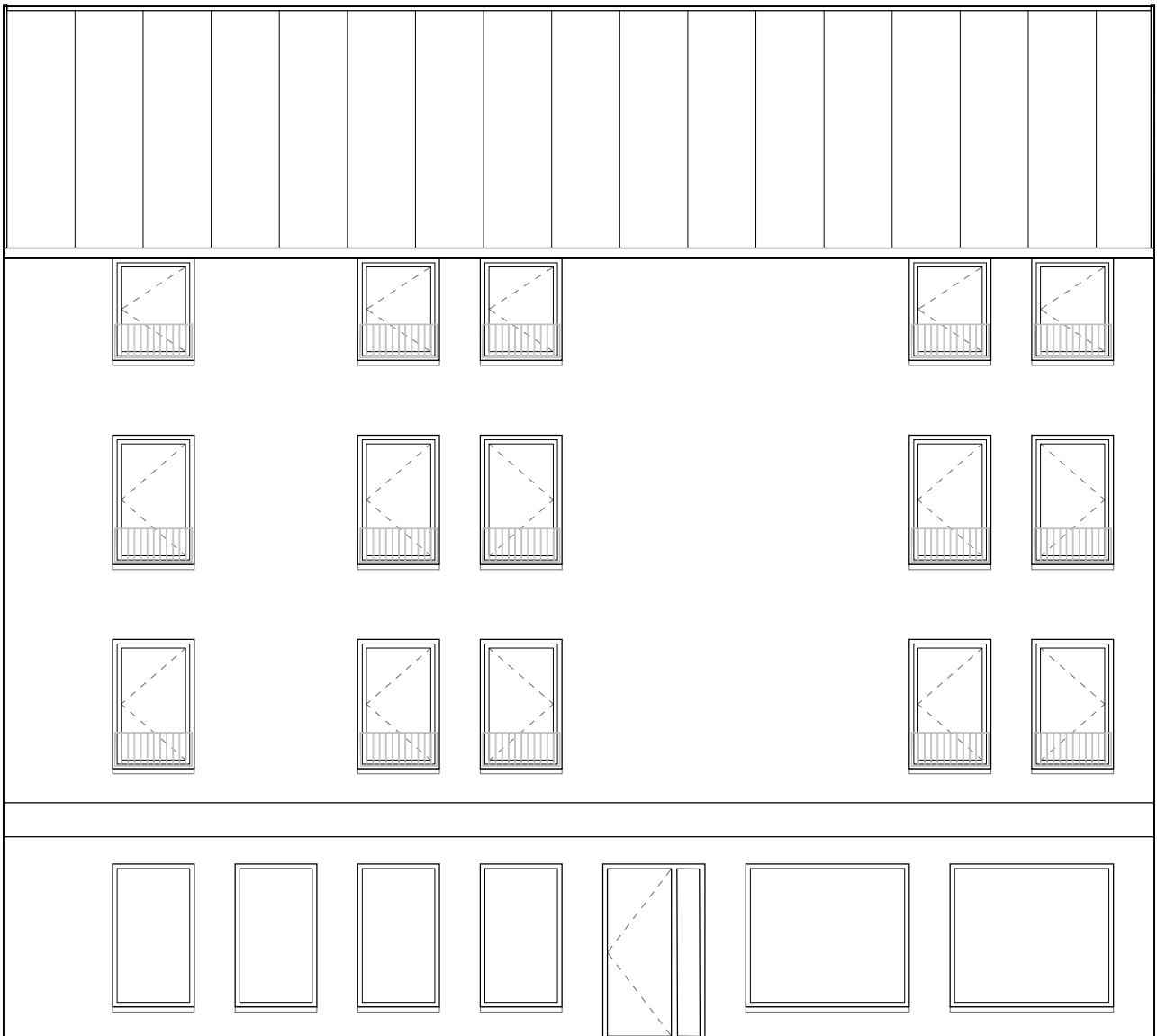
SHOULD GF AND UPPER FLOORS ALIGN?



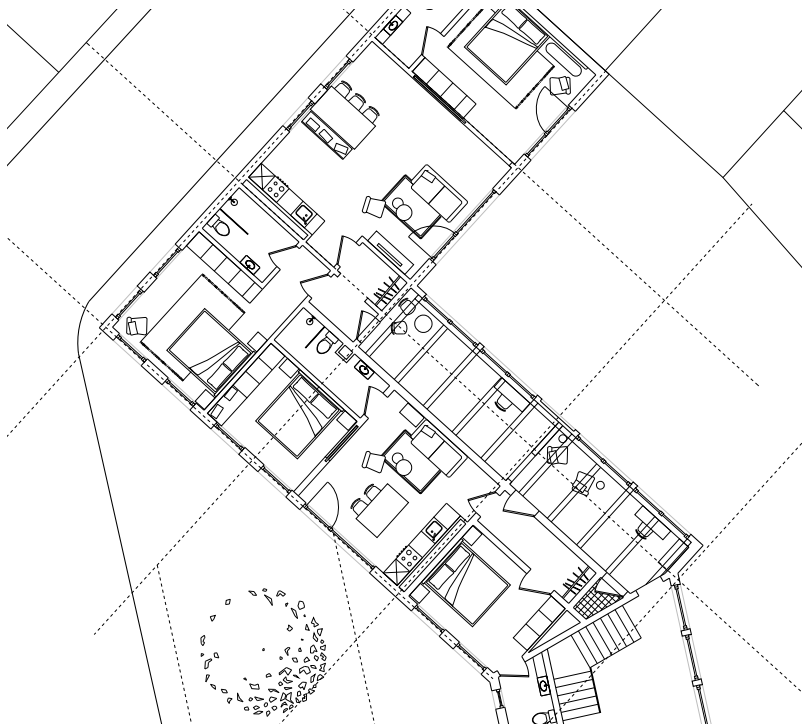


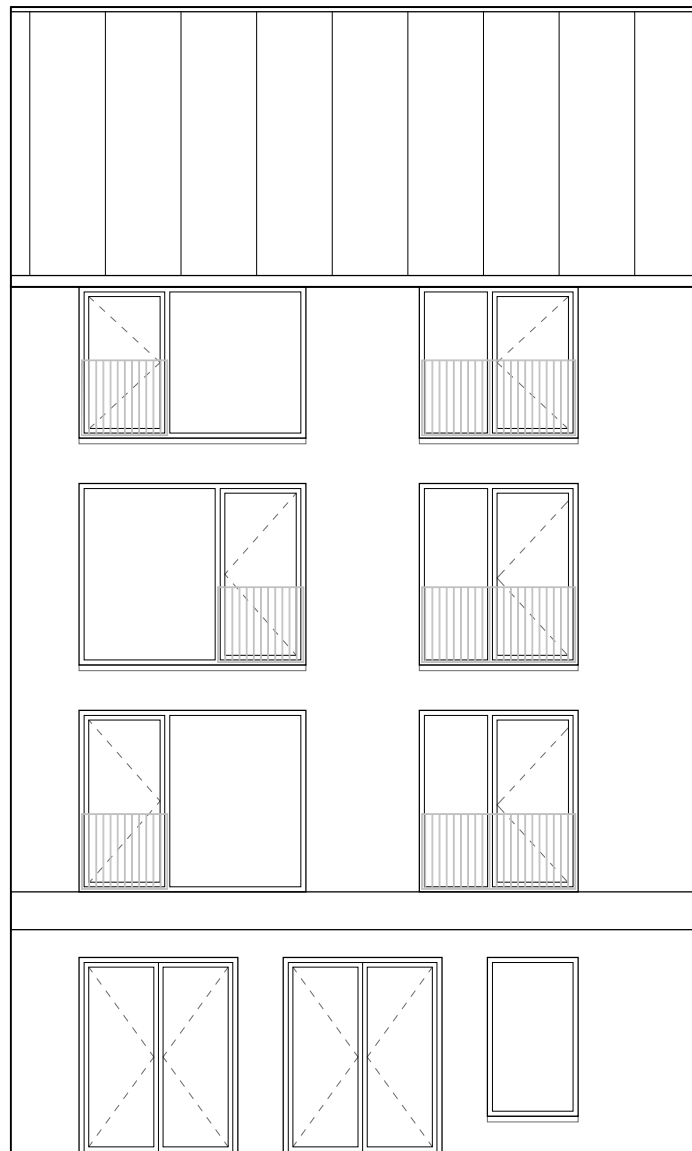












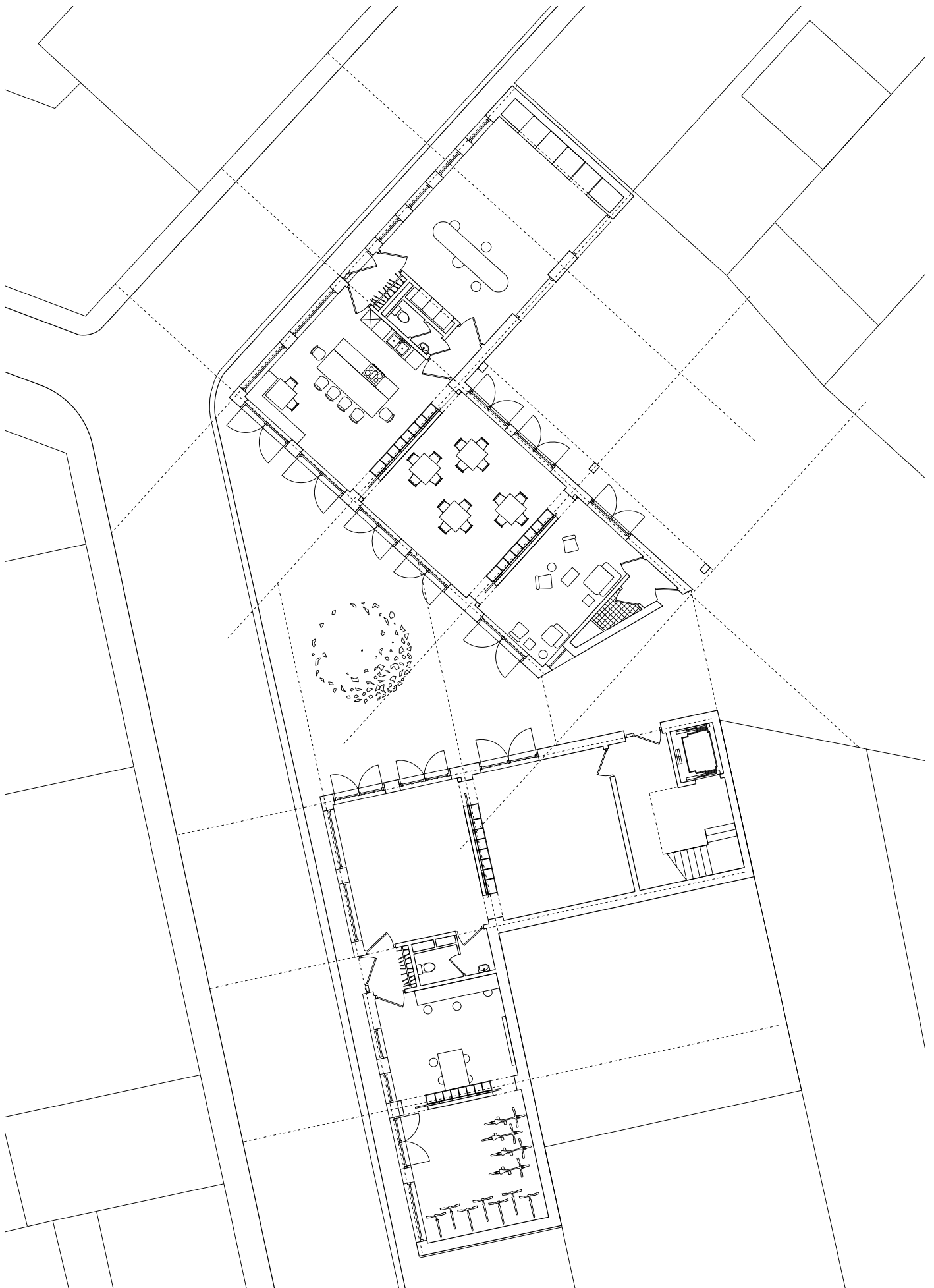
Week 4.5

Circulation _ as an object

Section 1:20 _ through the square, building and garden

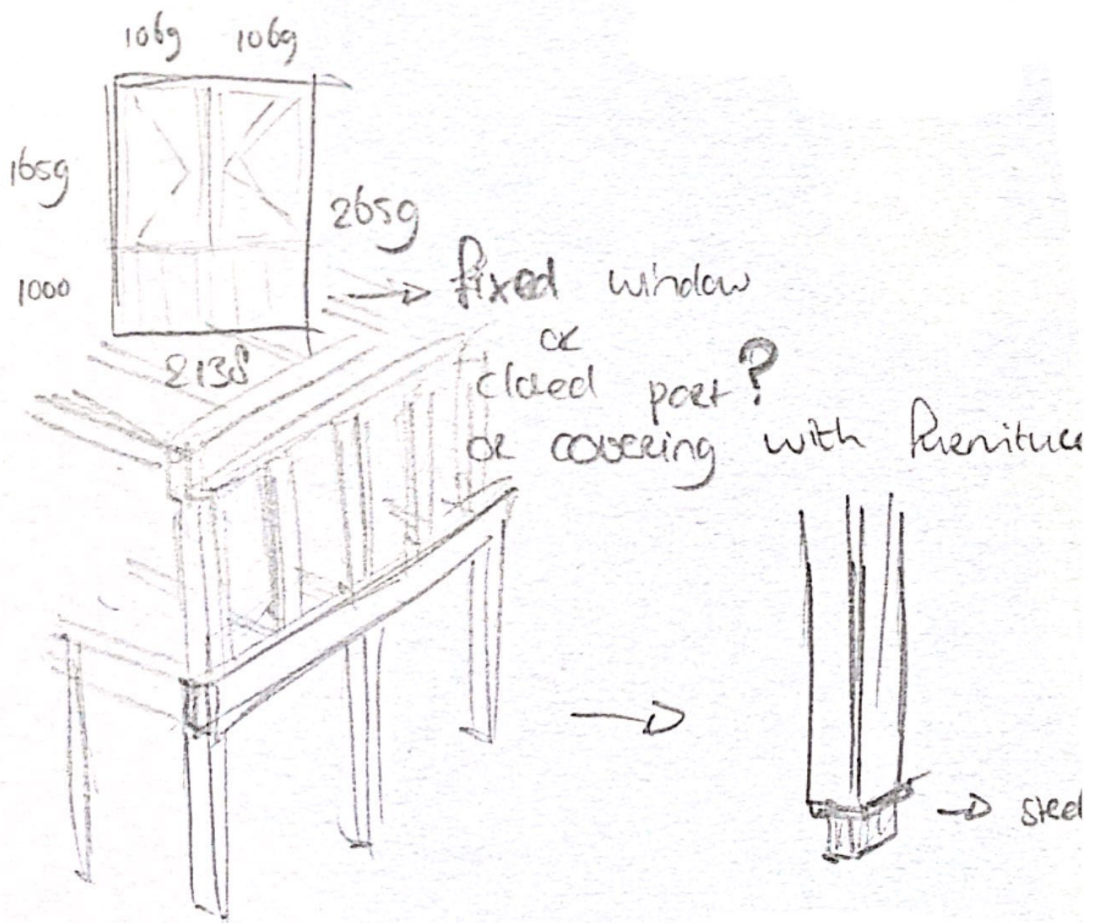
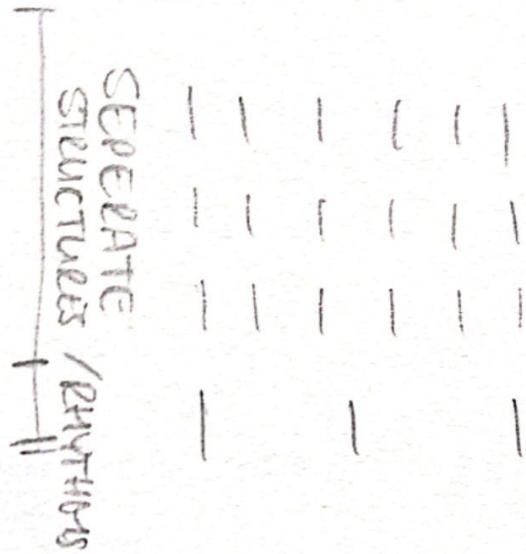
Materiality and structure _ two different part of the building

Ventilation _ Hybrid between natural and mechanical



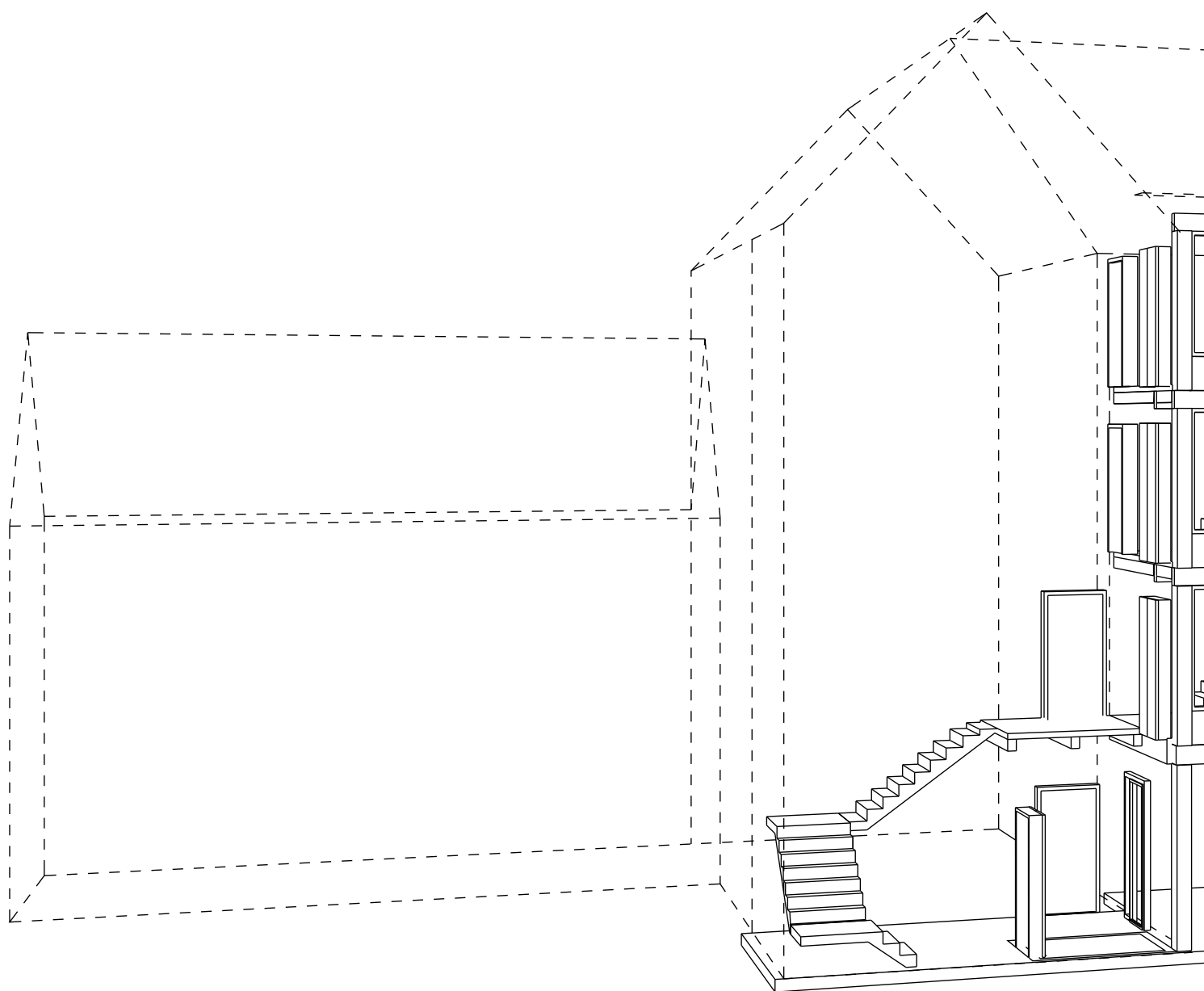


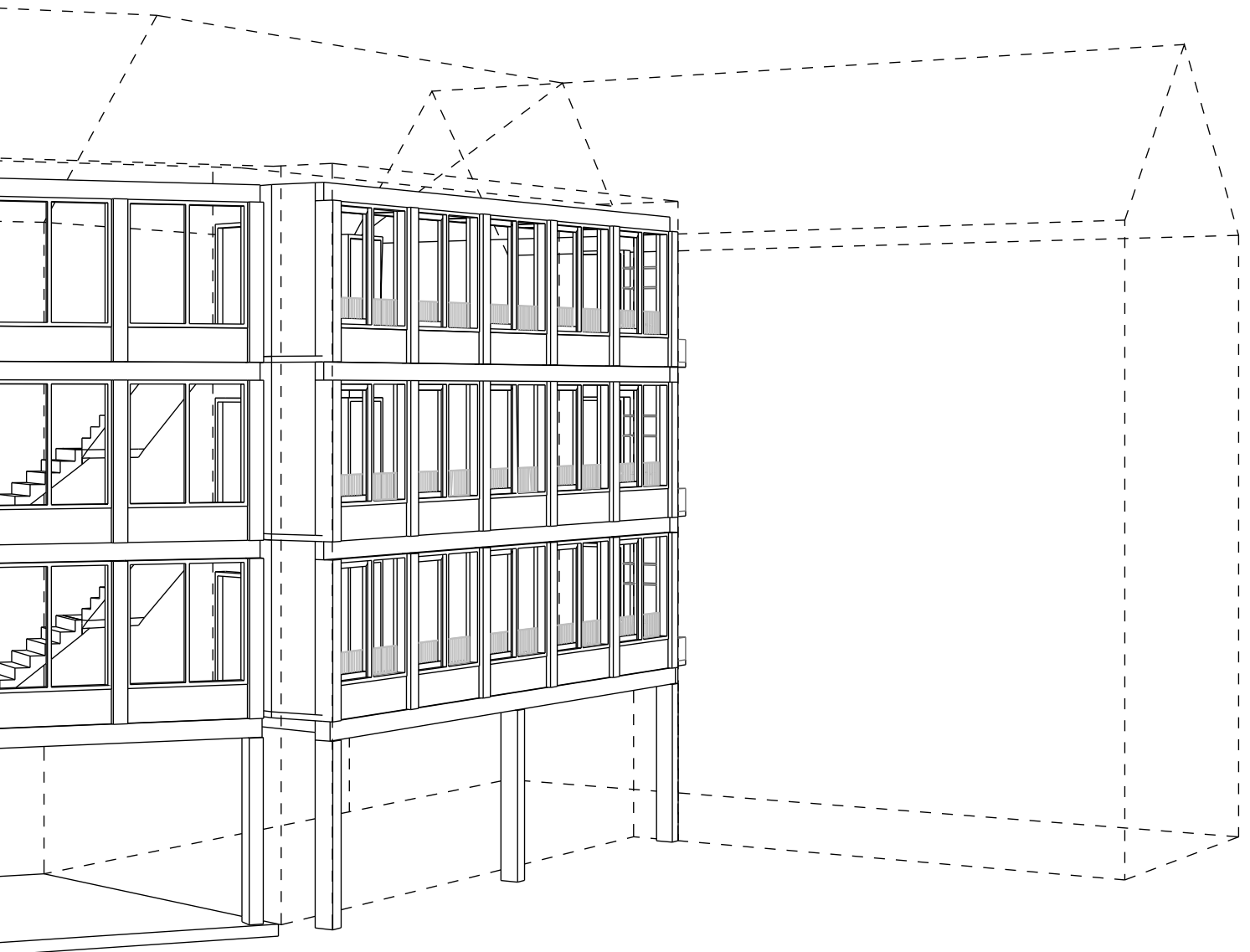
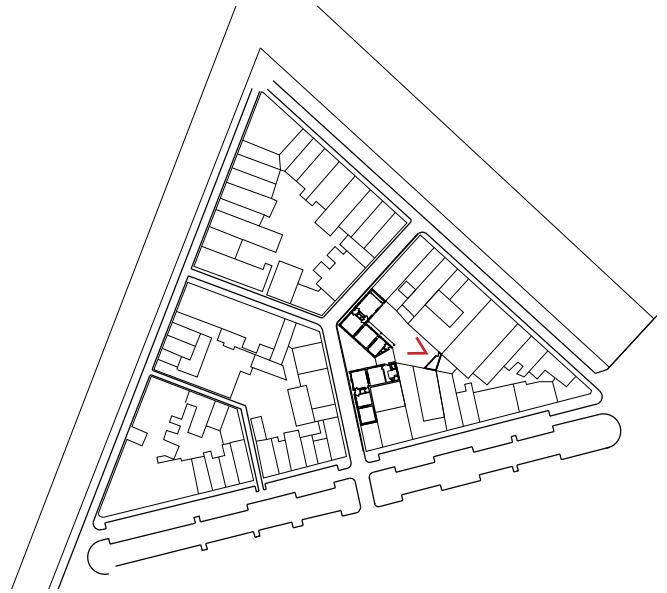
14.05.21











14.05.21

