

Fieldwork

Neighborhood Observation

Elderly Mobility

Rotterdam: Parkflat & Acadia

Social Isolation

Seoul: Grandmother's funeral

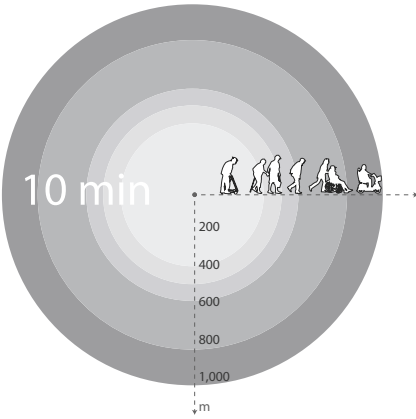
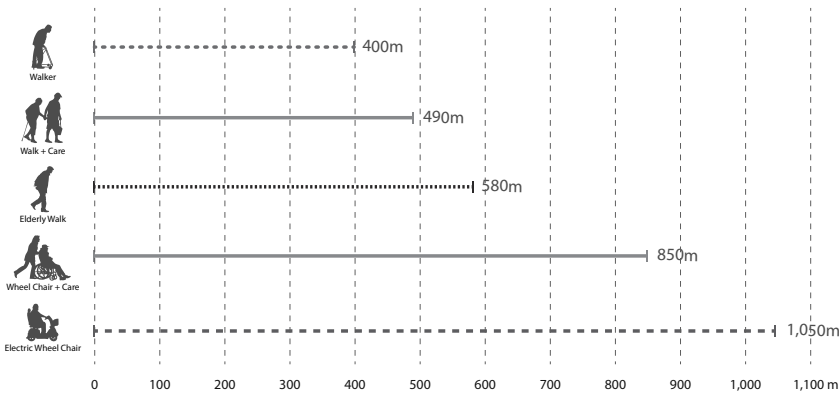
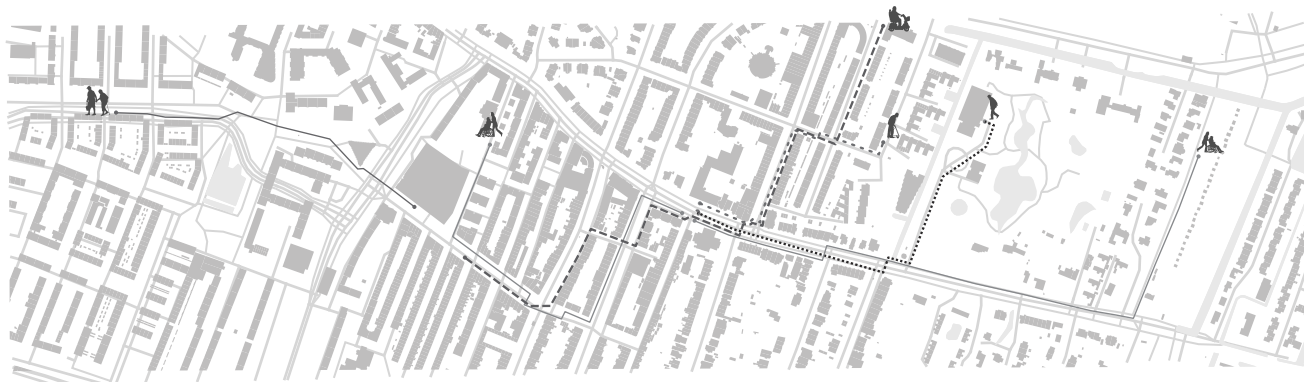
Family issues

Neighborhood Observation

Elderly Mobility

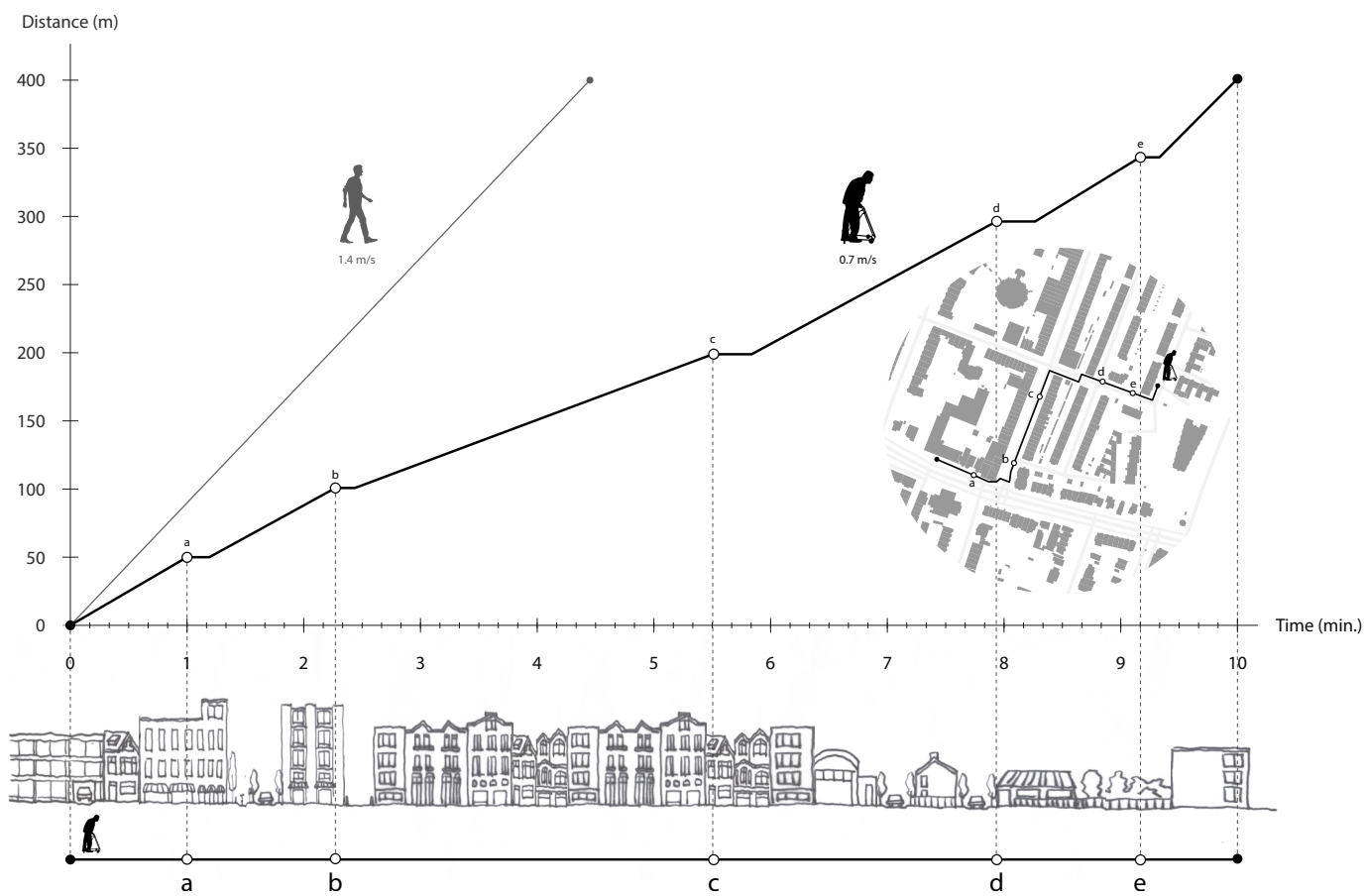


Movable Distance for 10 minutes depending on the moving methods.



Short Movie: “Daily Journey of Old lady” (2018) / Film by E. Hong

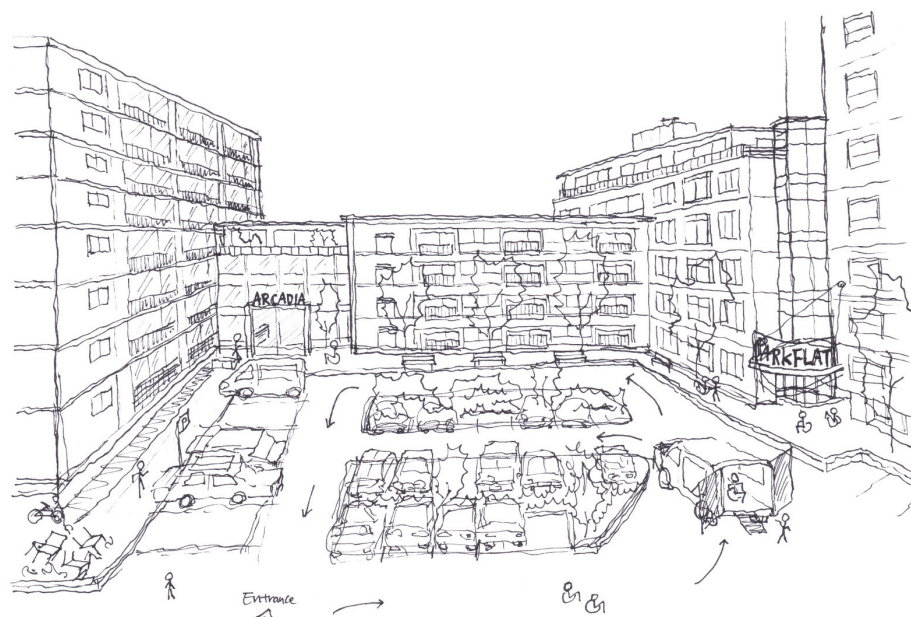
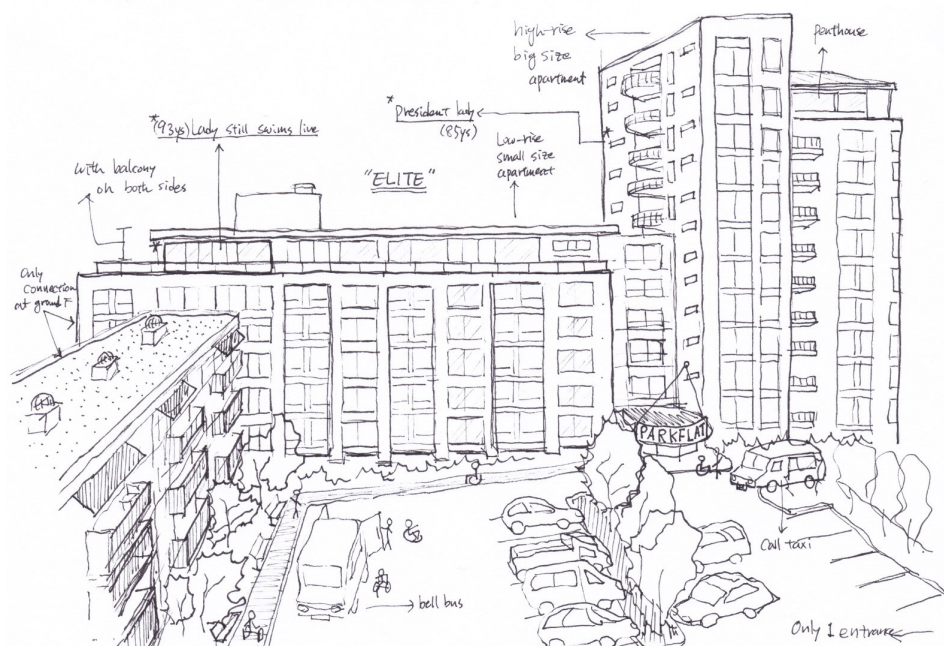


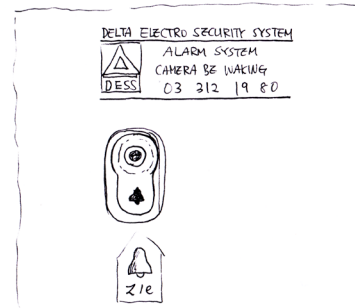
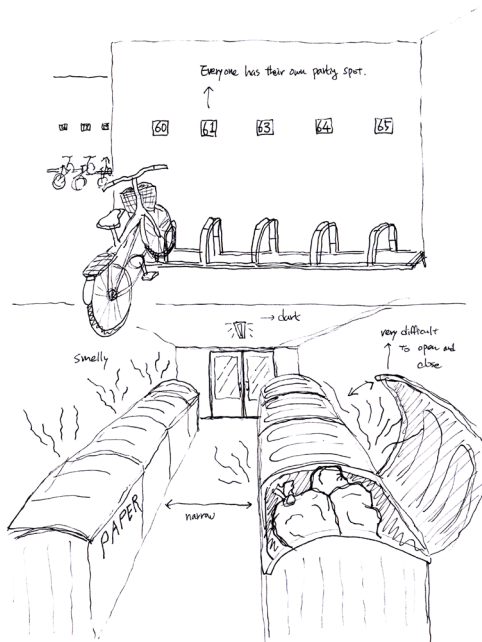
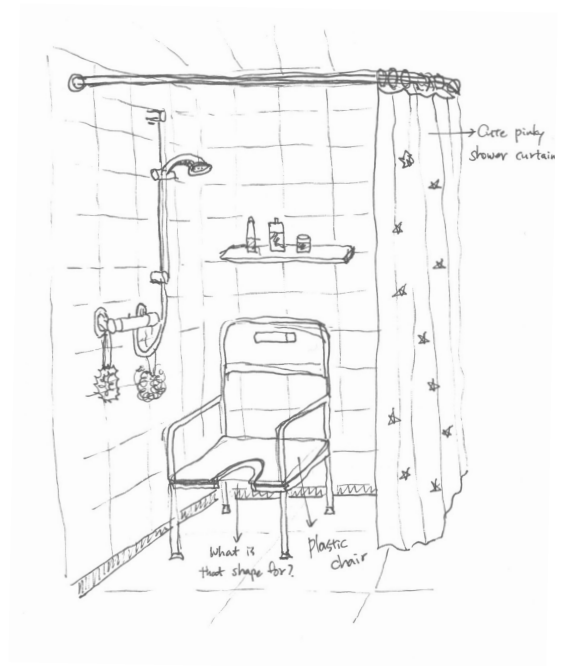


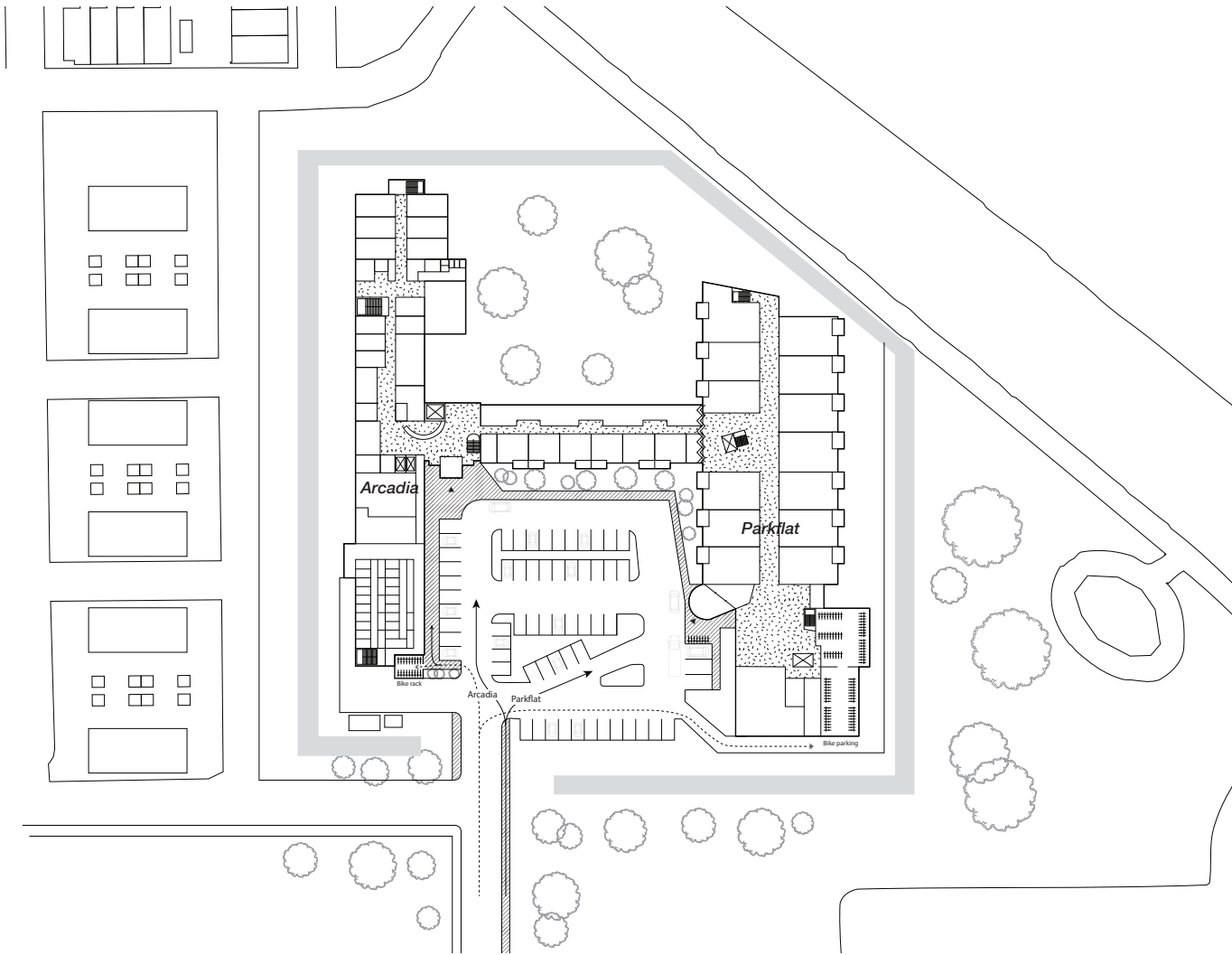
Rotterdam: Parkflat & Acadia

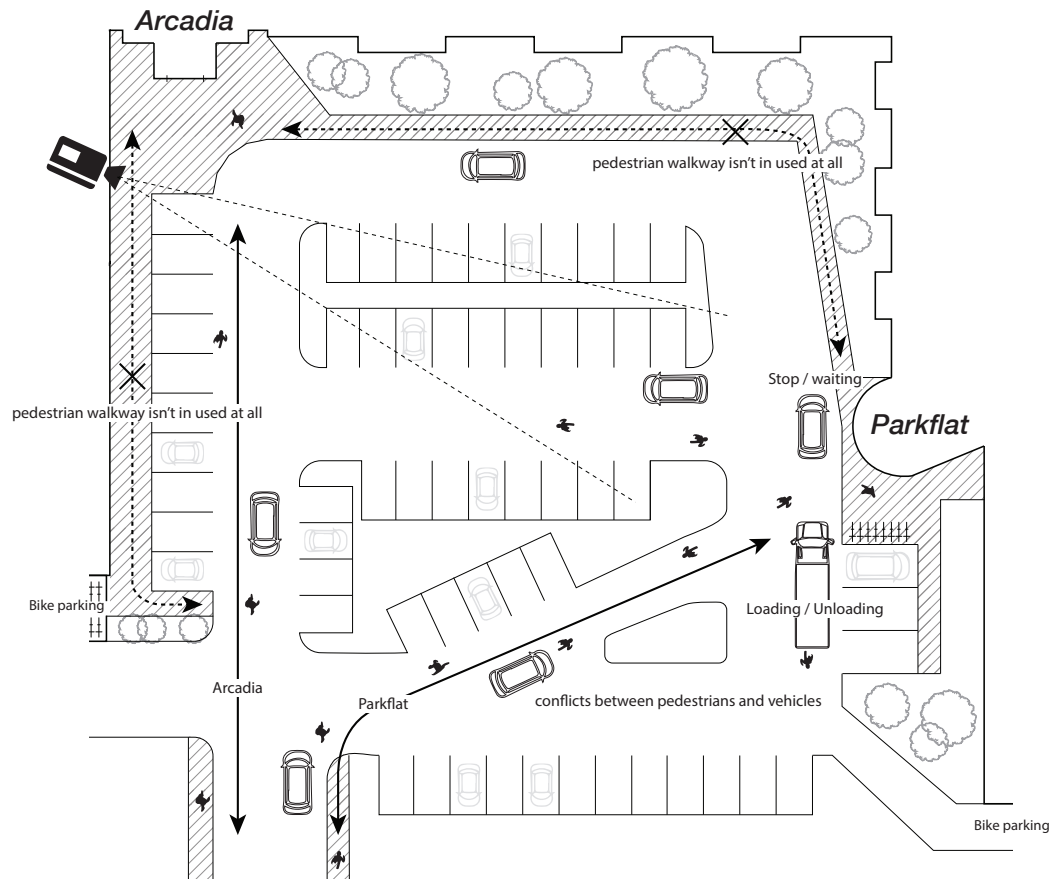
Social Isolation









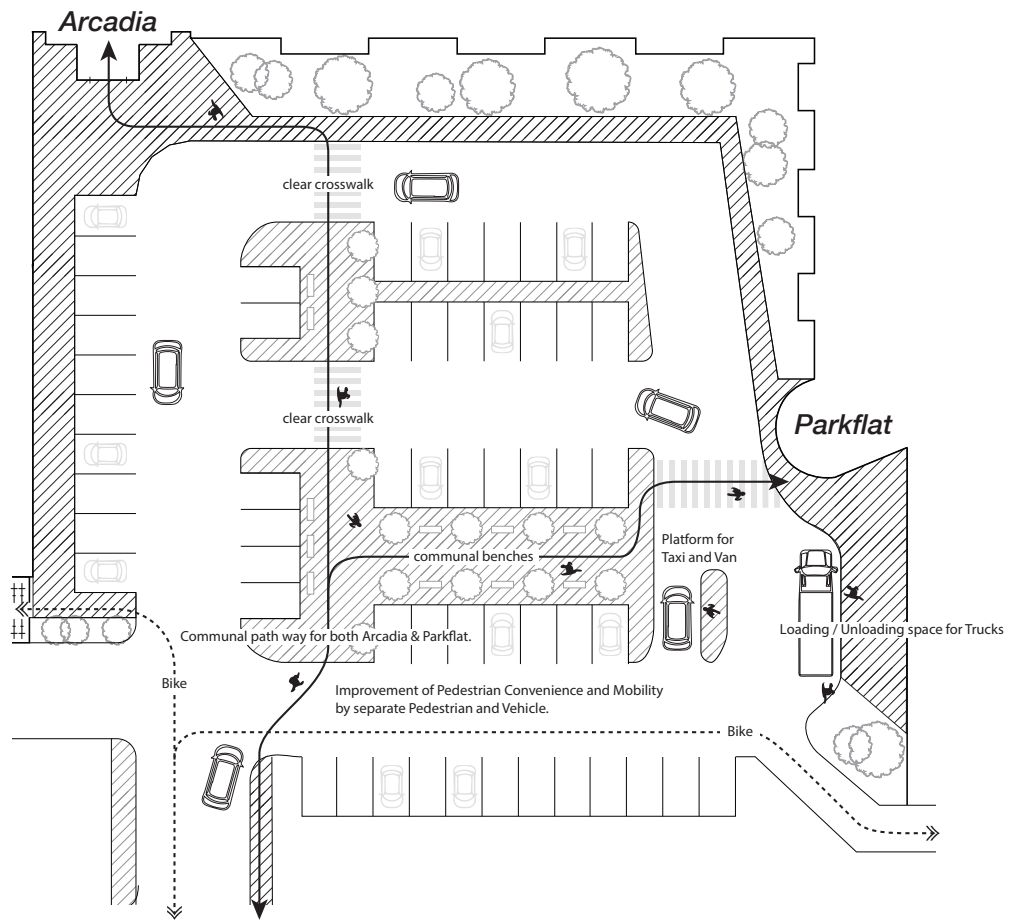


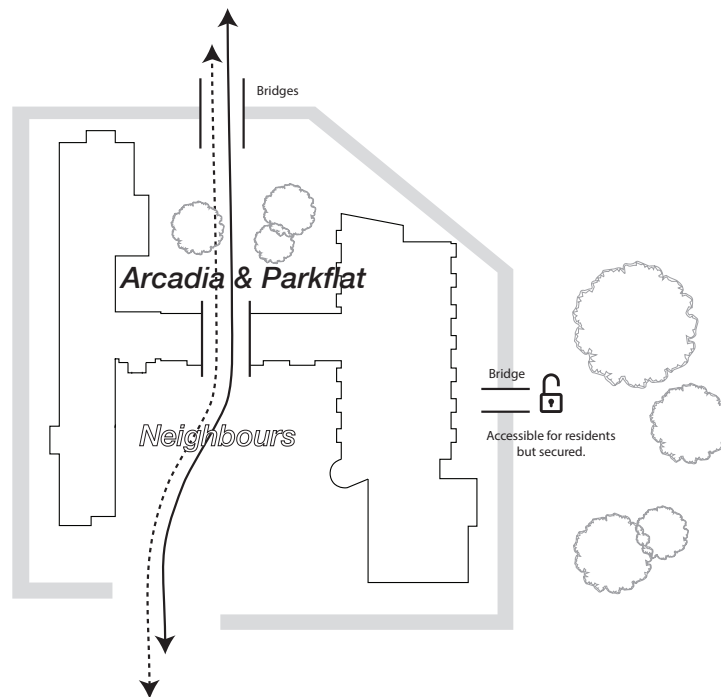
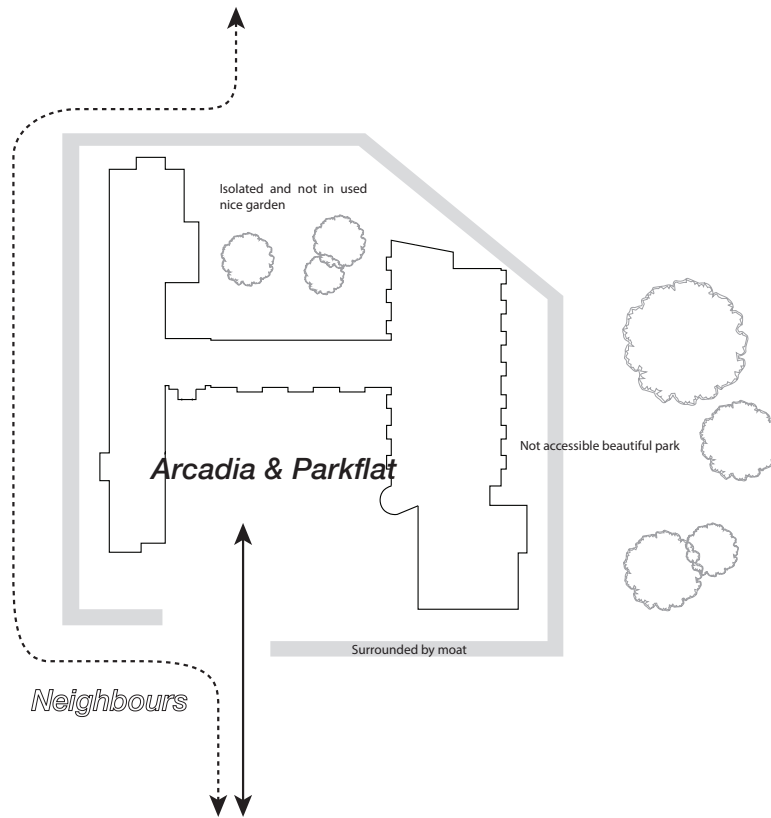
	45		19		1
	2		1		3
	7		3		7

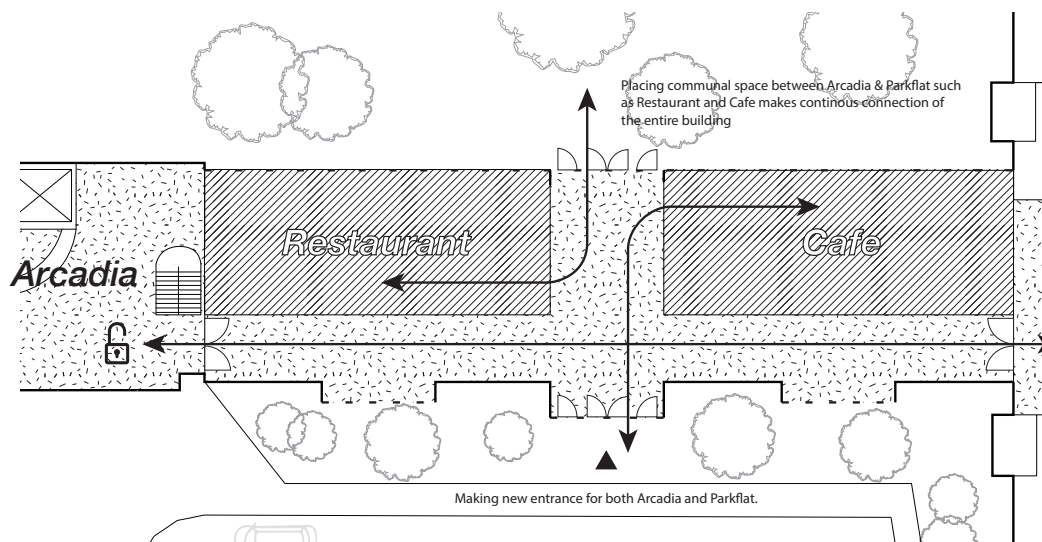
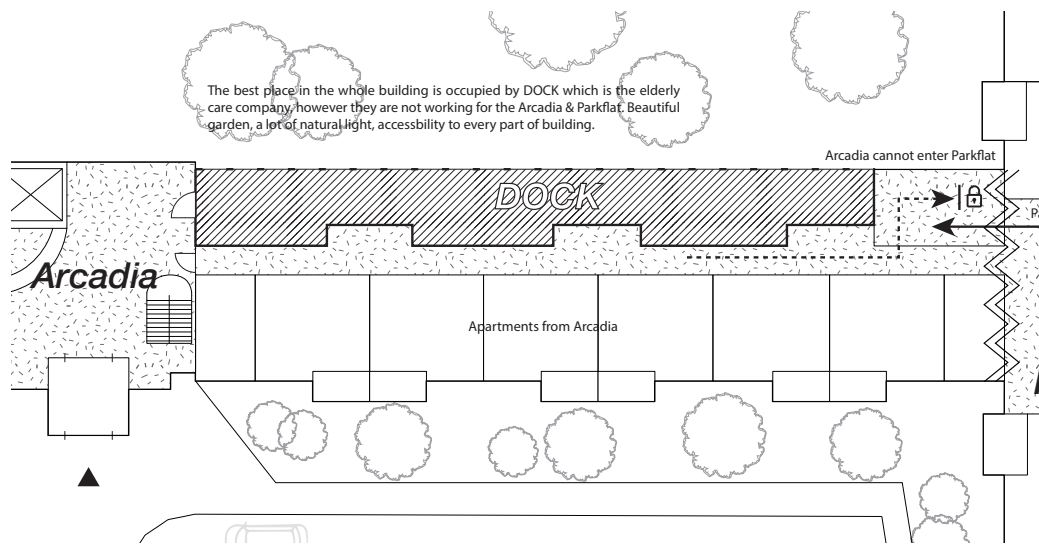
(Recorded 20 min. per each hour / 3 hours in total / 8am - 5pm)

Short Movie: "A day of Parkflat, Rotterdam" (2018) / Film by E. Hong









Seoul: Grandmother's funeral

Family issues

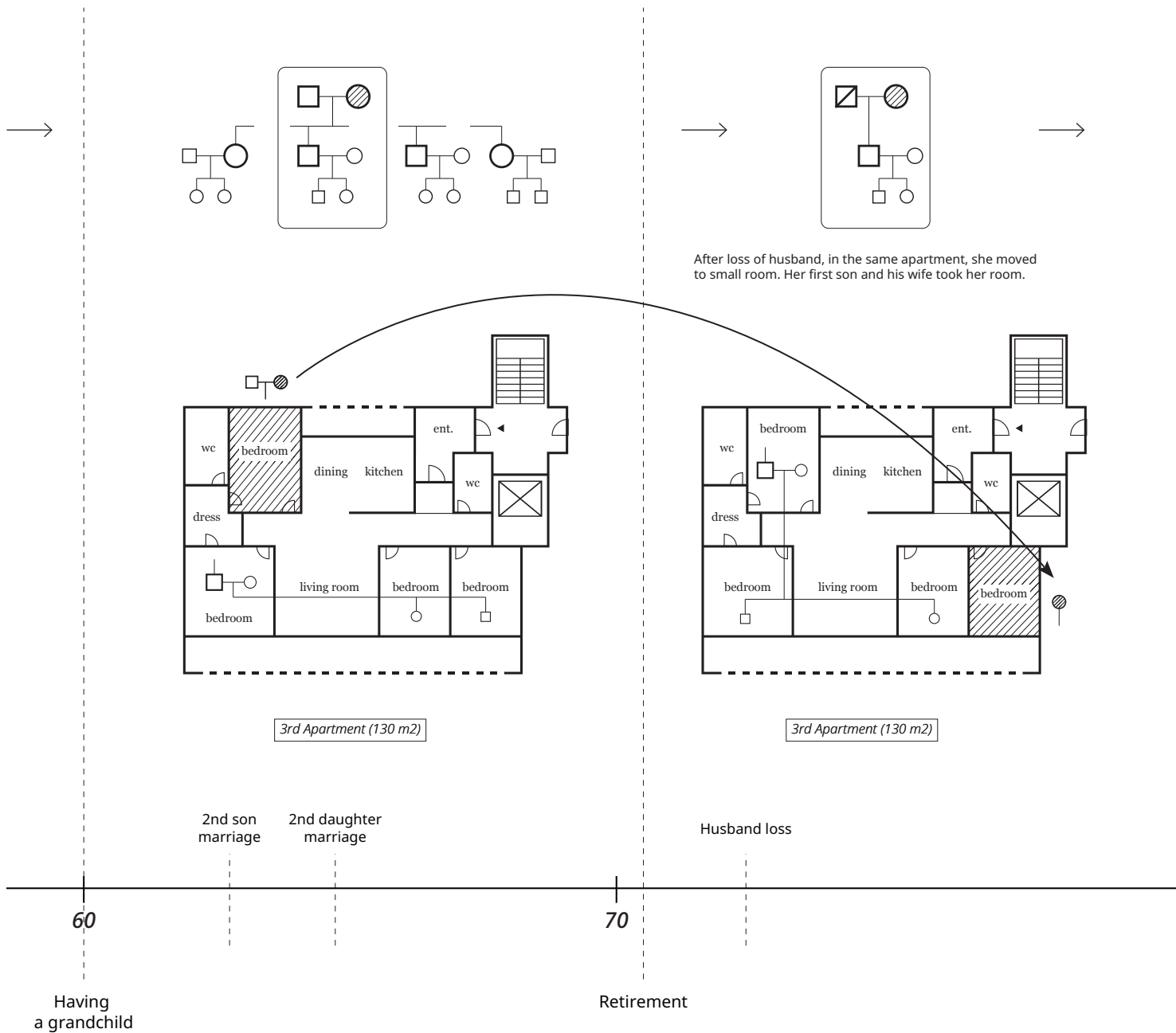


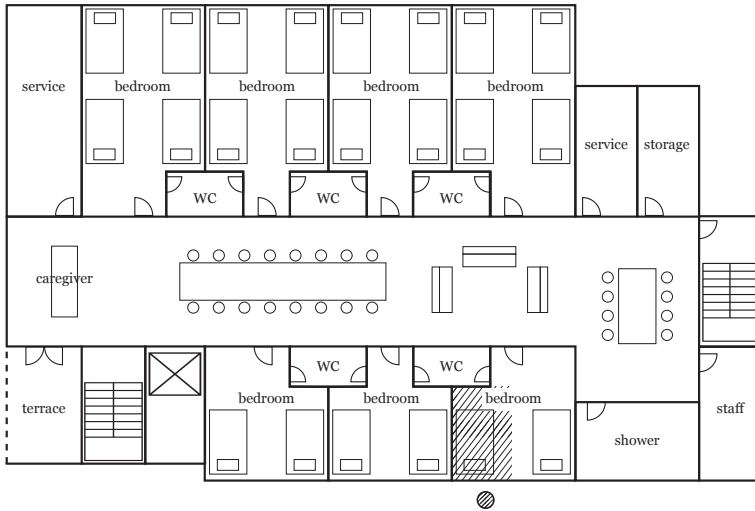
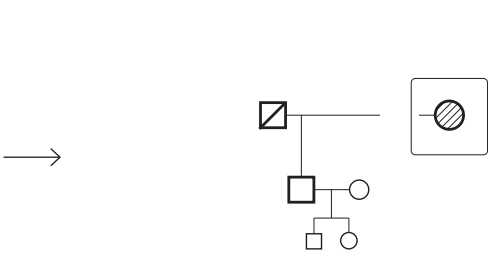
Yu, Hosuk

(1925 - 2018)

Changes of Grandmother's room







Care Home 5F / Share room / 150 elderlies

Home leaving
(Care home)

80

90

Life
expectancy

Family issues



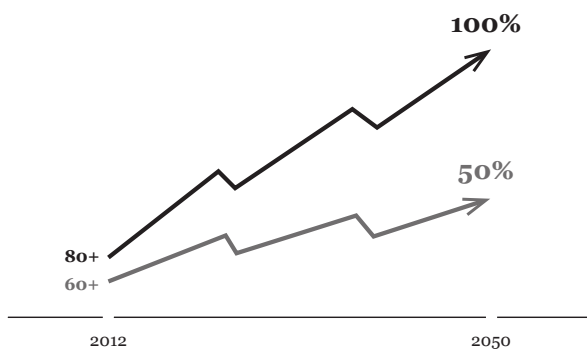
1. Increasing needs of family caregivers

2. Family structure changes

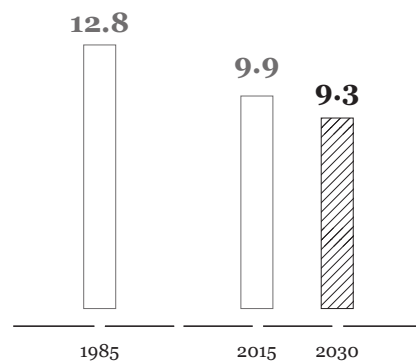
3. Physical distance

1. Increasing needs of family caregivers

Aging society



Projected increase in EU's elderly population 2012 - 2050

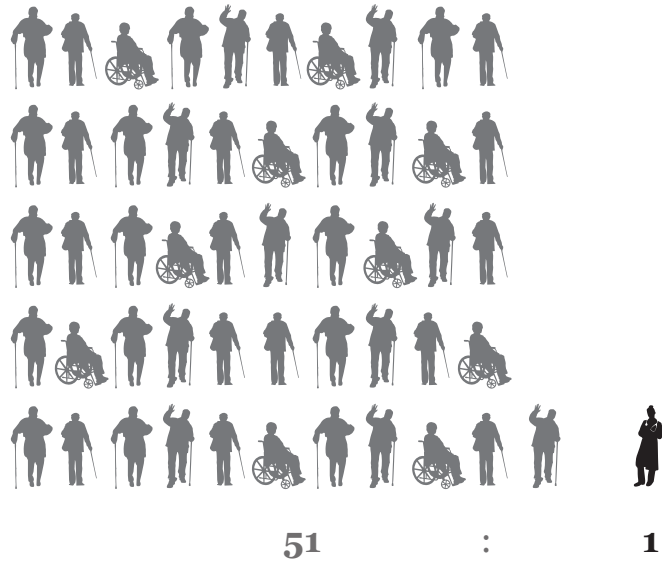


Average birth rate per 1000 persons per year in the EU

Importance of family role in elderly care

Families are the cornerstone of all human societies which have been discovered in every human culture. Family as a social institution is closest to us and its influence can be felt in everyday lives. (Morgan & Kunkel 2006). It is a place where a person finds and expects the most encouragement, comfort and security and help if needed. Elderly are most happy with family life especially with their children. (Läidmäe, V & Tammsaar, K & Tulva, T & Kasepalu. 2012.)

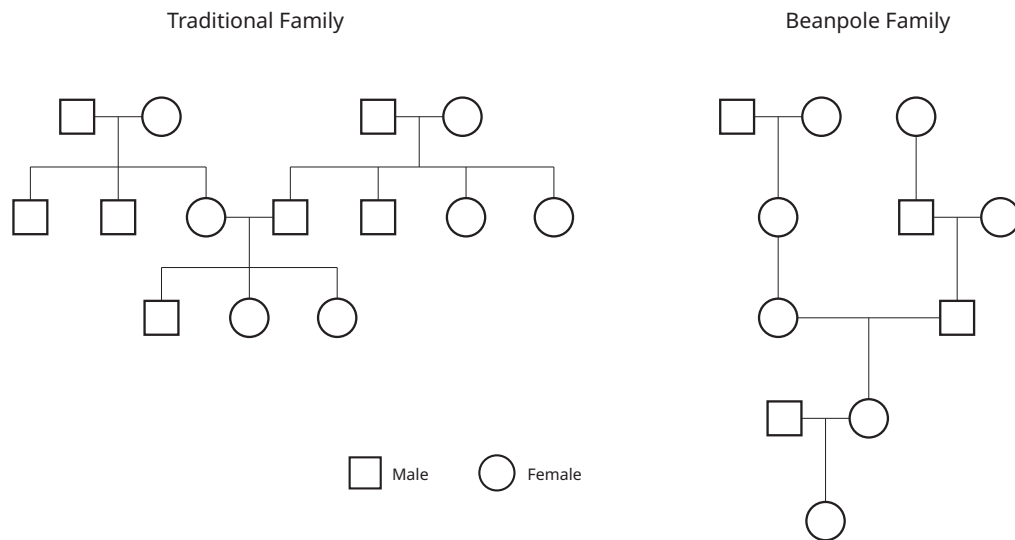
Decline of caregiver ratio



By 2060, there could be as few as
one potential carer for 51 persons aged 80 and older

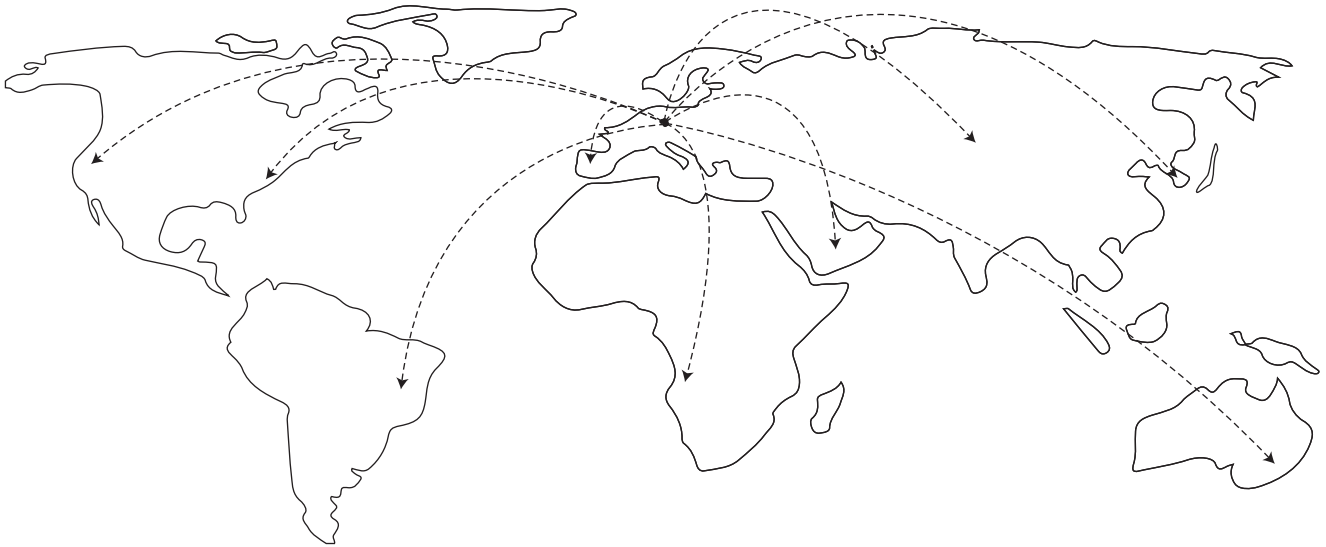
Research in many cultural settings shows that older people prefer to be in their own homes and communities (WHO 2011.) Multigenerational family involving more than two generations are available due to increased life expectancy of people (Sousa 2009). Even though there is increase in family generations, families are fragmented into small units and divided in different family patterns due to marriage, divorce, step family relations.

2. Family structure changes

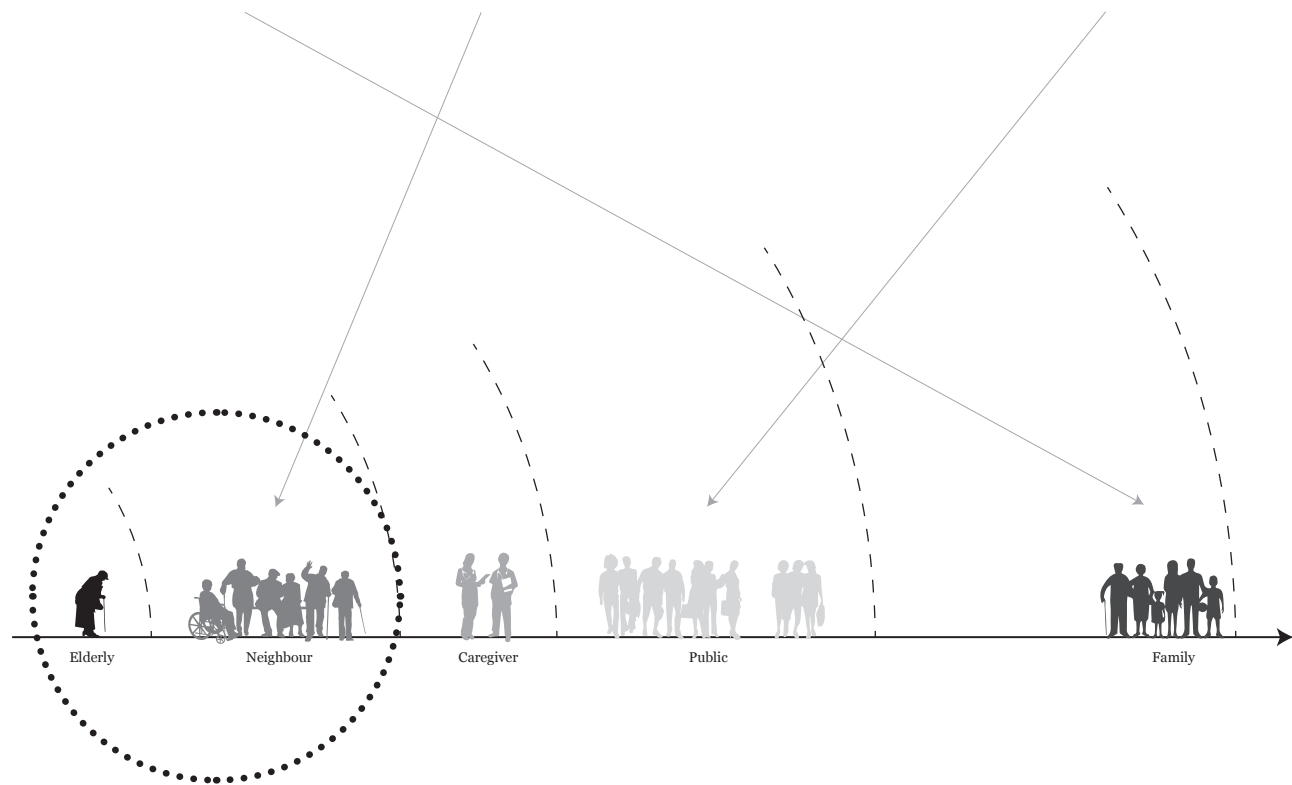
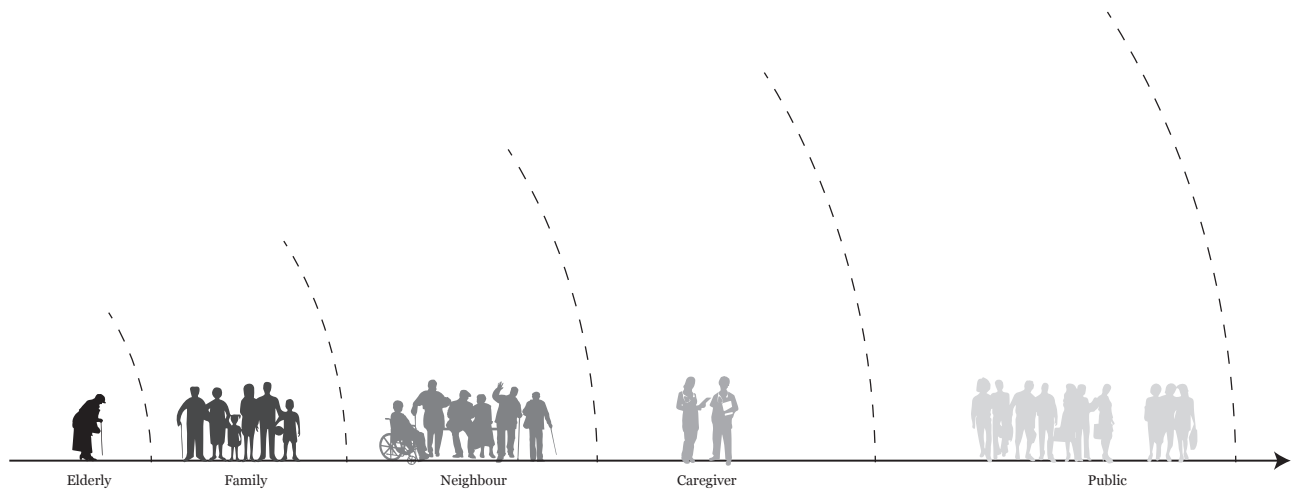


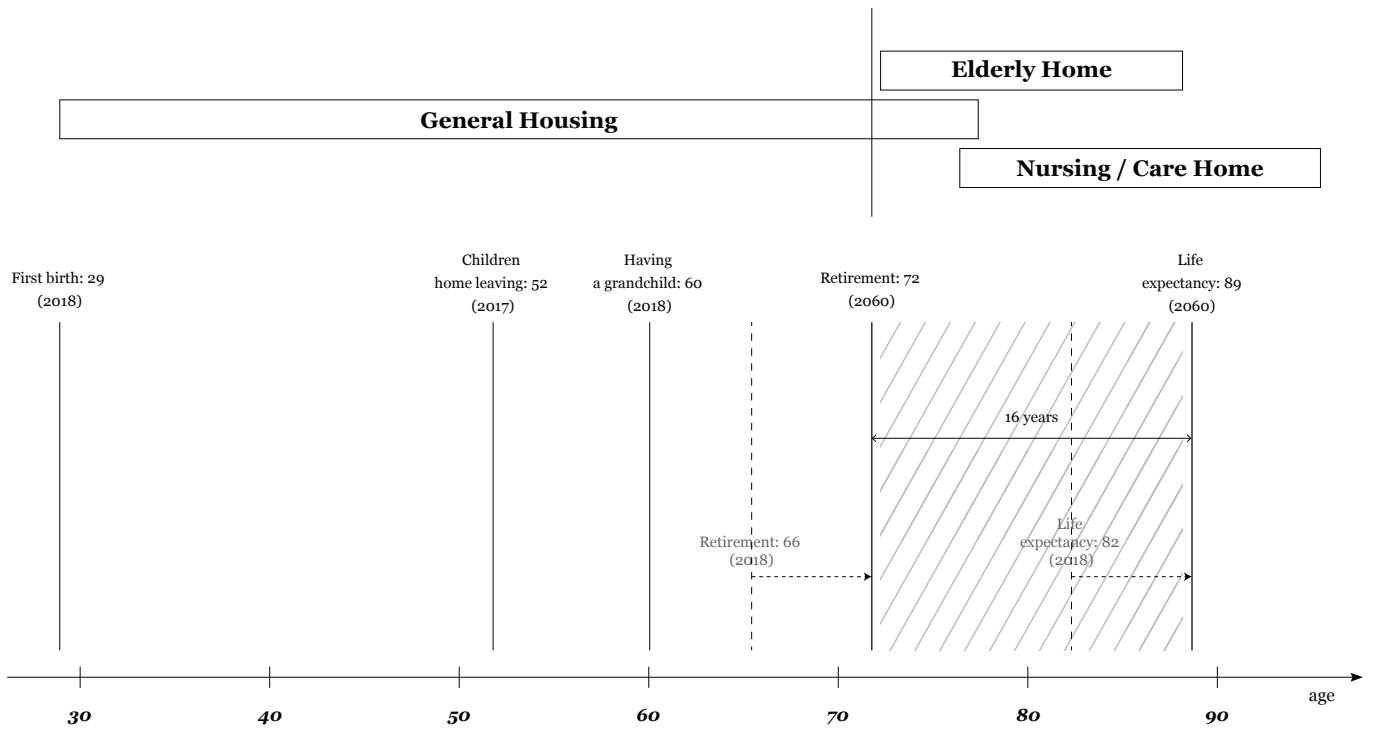
As life expectancy increases in most nations, so do the odds that several generations are alive at the same time. In more developed countries, this is manifested as a “beanpole family,” a vertical extension of family structure characterized by more but smaller generations. As mortality rates continue to improve, more people in their 50s and 60s are likely to have surviving parents, aunts, and uncles. Consequently, more children will know their grandparents and even their great-grandparents, especially their great-grandmothers. There is no historical precedent for a majority of middle-aged and older adults having living parents.

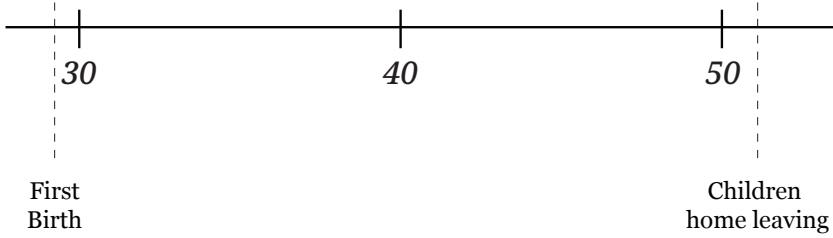
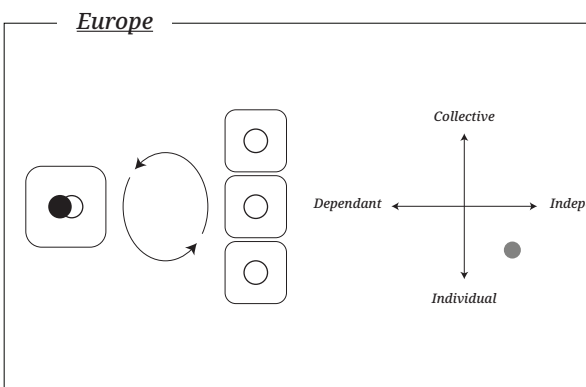
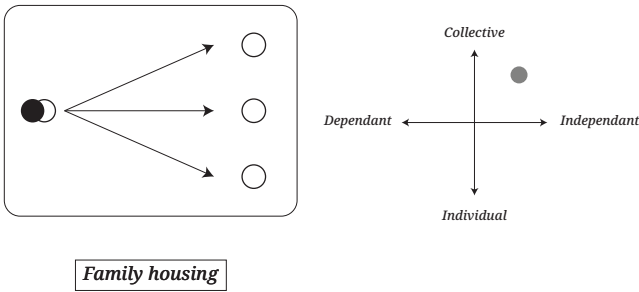
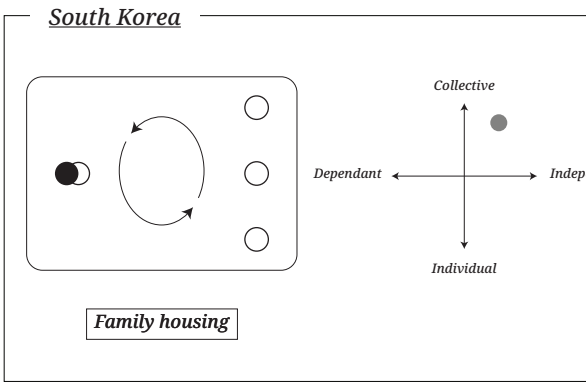
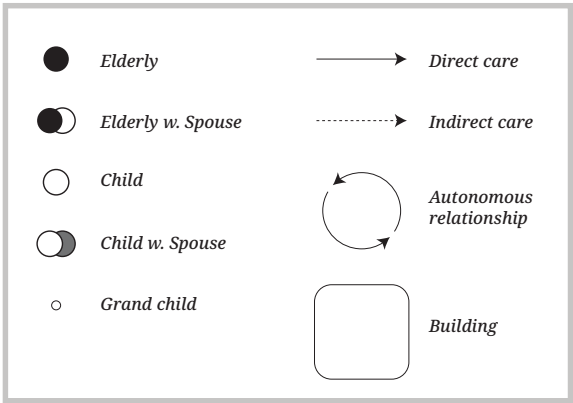
3. Physical distance

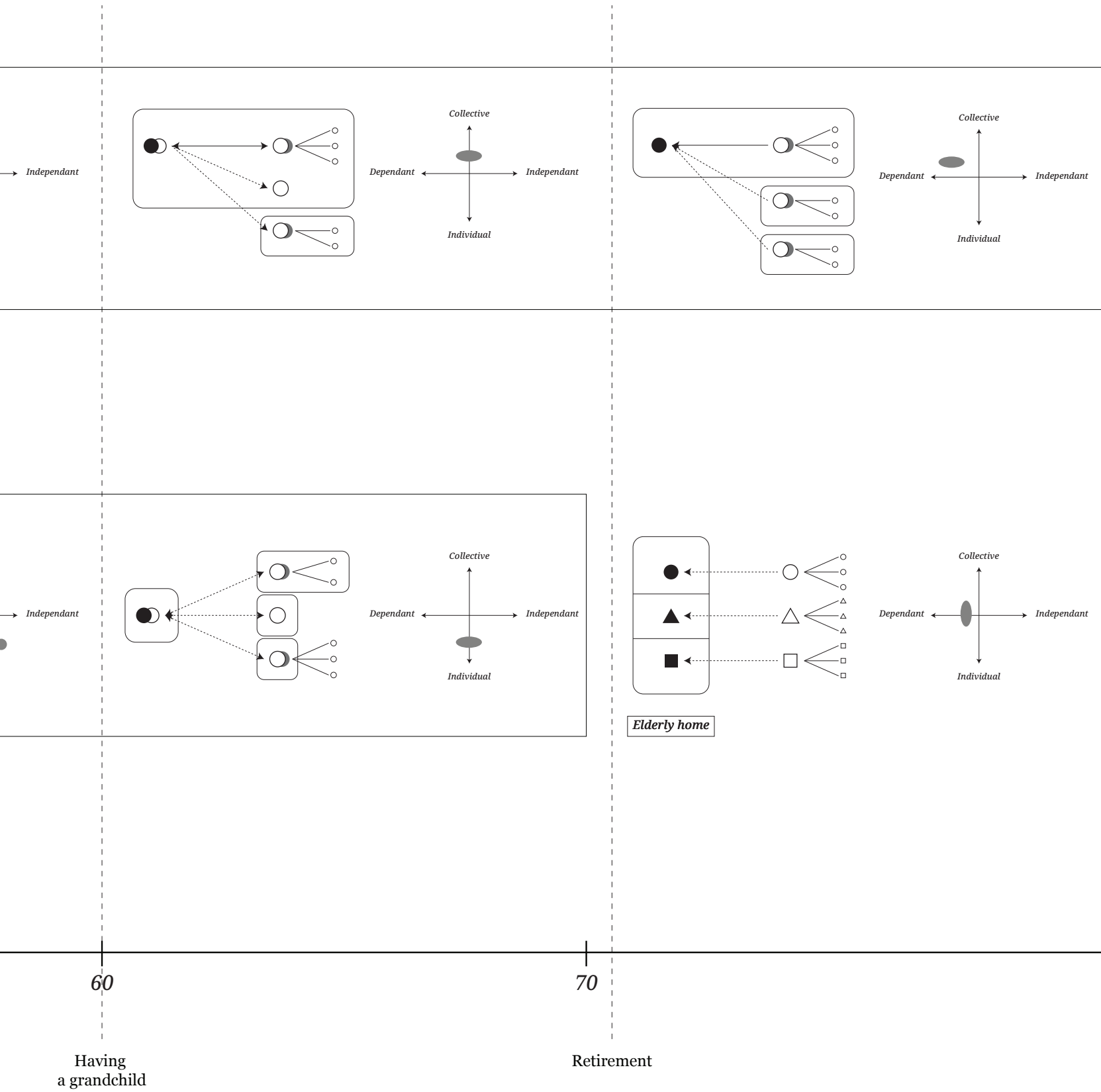


It has even increased with family trend to live separately, family member seeking job, studying, or live abroad in different places. This causes fewer young family members available to provide care to the elderly people. Their physical distance is much longer than the past.

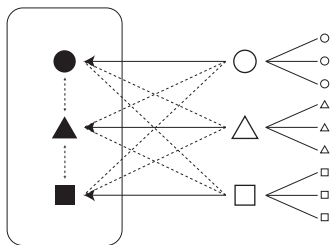




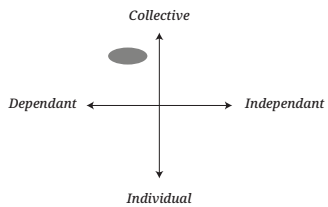




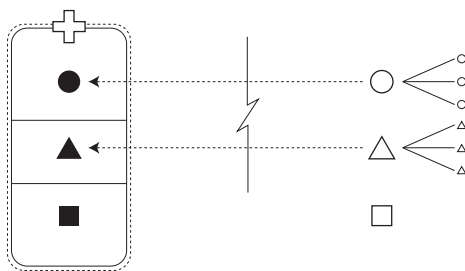
pendant



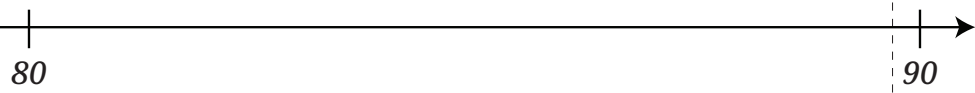
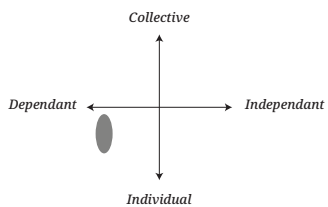
Shared-living



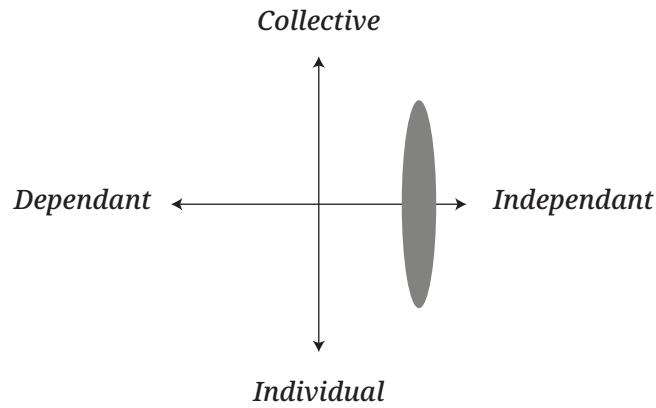
pendant



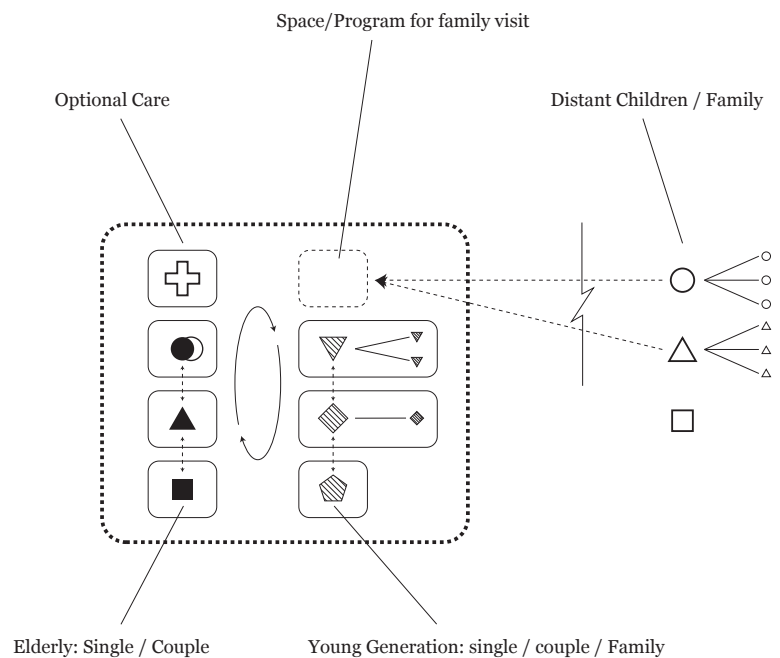
Care home

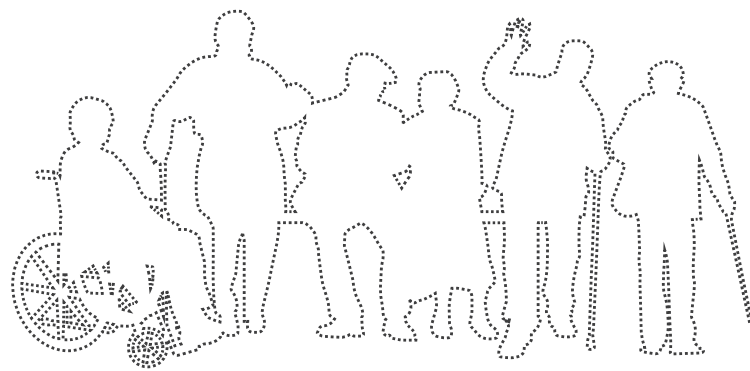


Life
expectancy



- 1) **Loss of a *Partner* or *Spouse***
To solve loneliness: Living alone but together
- 2) **Leaving home**
Move in earlier age / Couple
- 3) **Distance** between family members
New family community / Mixed-generation
- 4) **Health** condition
Don't let the care system dominate elderly's life
- 5) **Care responsibility to *Parents***
Space or Program for children (family)





The need for
a new family

Problems in developing intimate relationships in current situation of the elderly

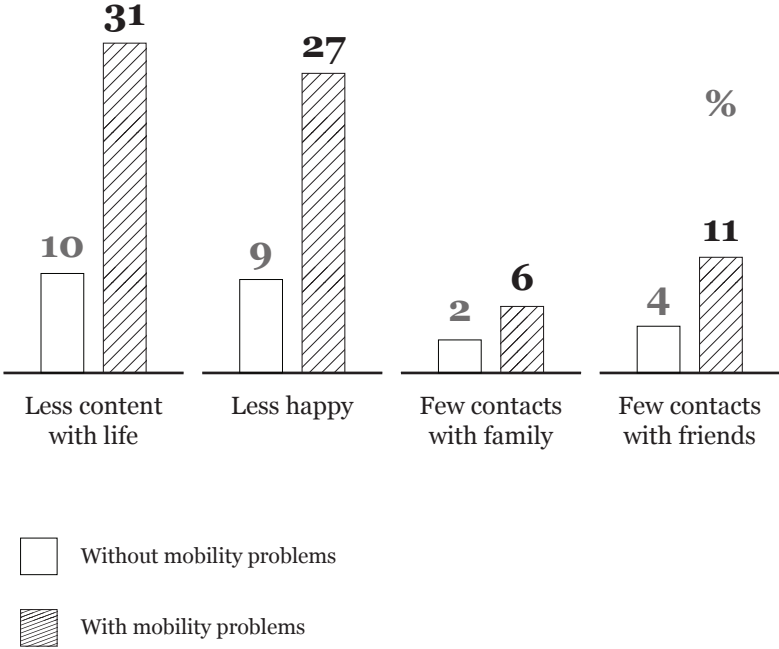
Decrease in physical mobility

Large scale of institutional elderly home

Loss of link with society after retirement

Decreased social role of the elderly

Decrease in physical mobility



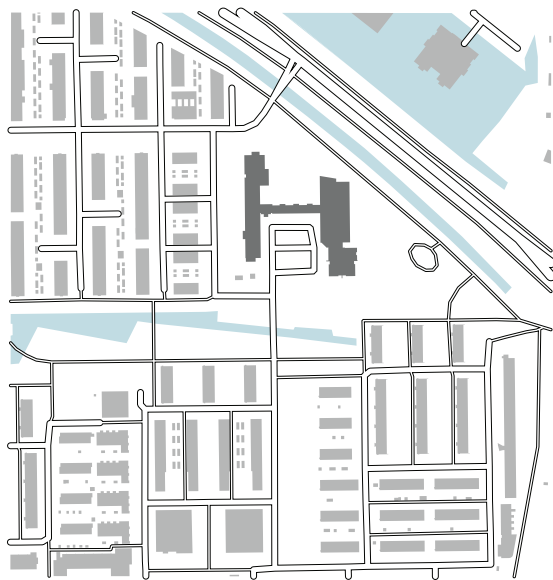
People with serious limitations in mobility are less likely to feel happy and content and have fewer social contacts. They are three times as likely to be unhappy and dissatisfied with life than people without mobility problems. People with serious mobility problems also have considerably fewer contacts with both family and friends than people without these problems.

Large scale of institutional elderly home

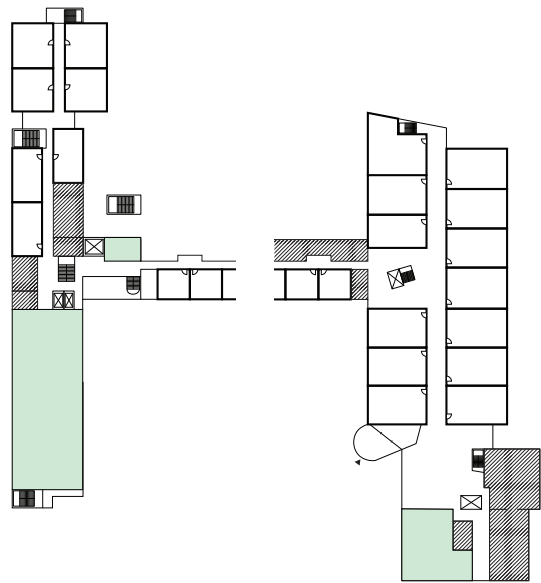


The elderly lives in institutional elderly home likely to lose their social interaction due to huge scale of the building and spaces organization.

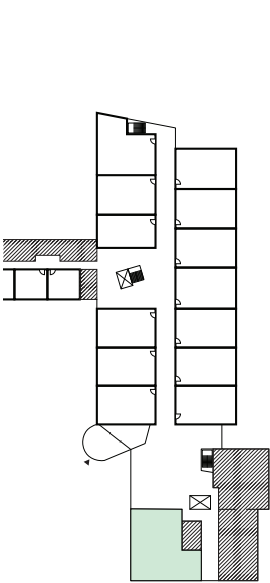
Fieldwork: Arcadia & Parkflat, Rotterdam



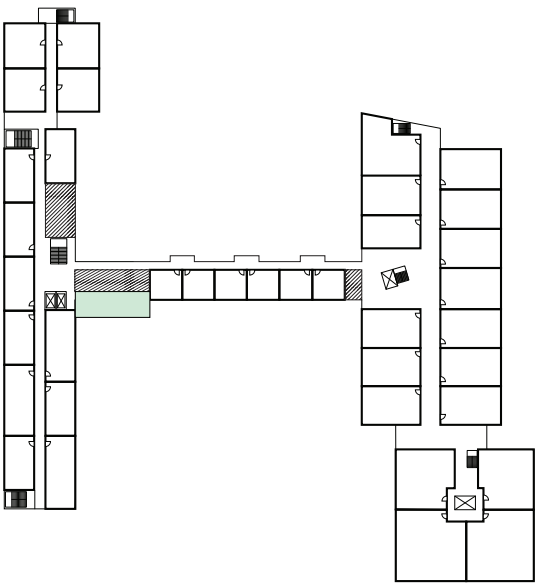
- Individual unit
- Collective space



1st floor plan

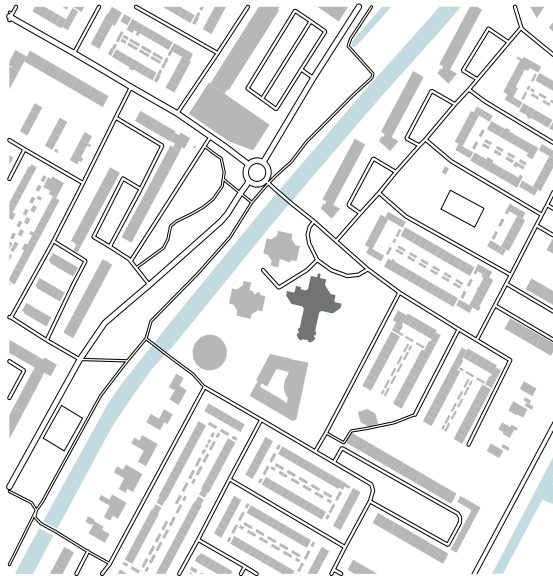


Ground floor plan

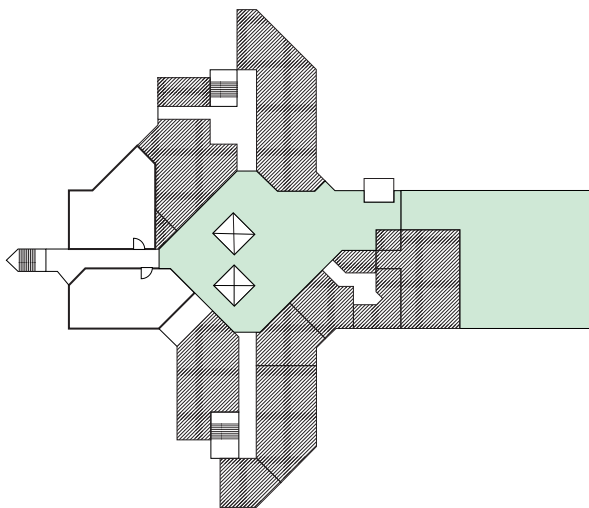


2nd floor plan

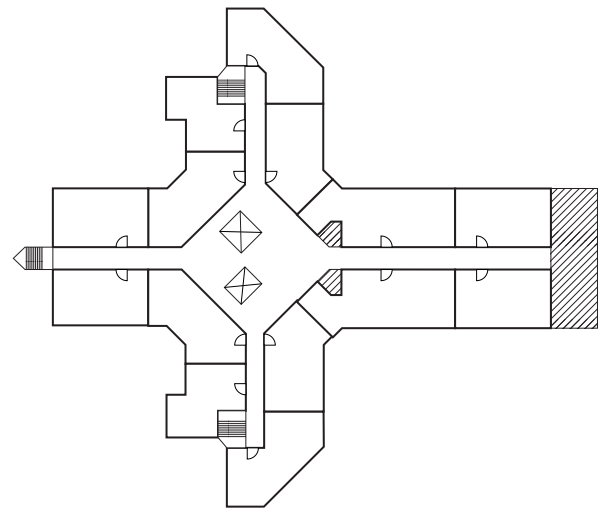
Fieldwork: Alkmaar



Individual unit
Collective space

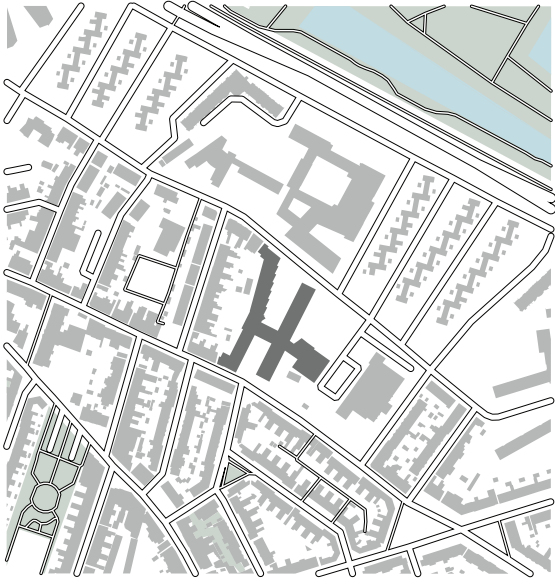


Ground floor plan

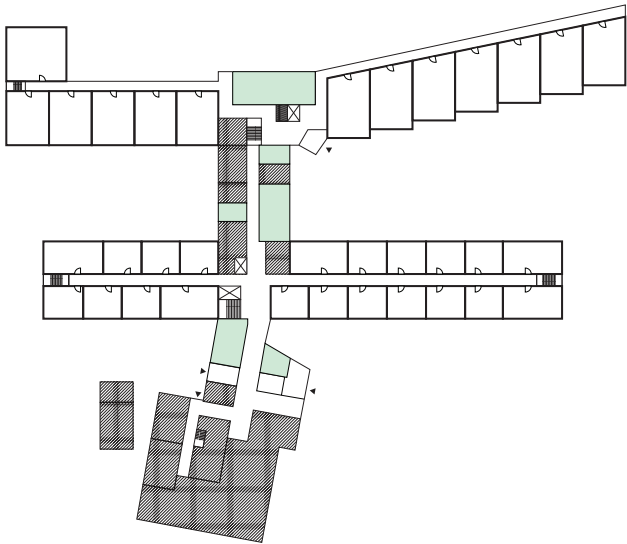


1st floor plan

Fieldwork: Zwolle



- Individual unit
- Collective space

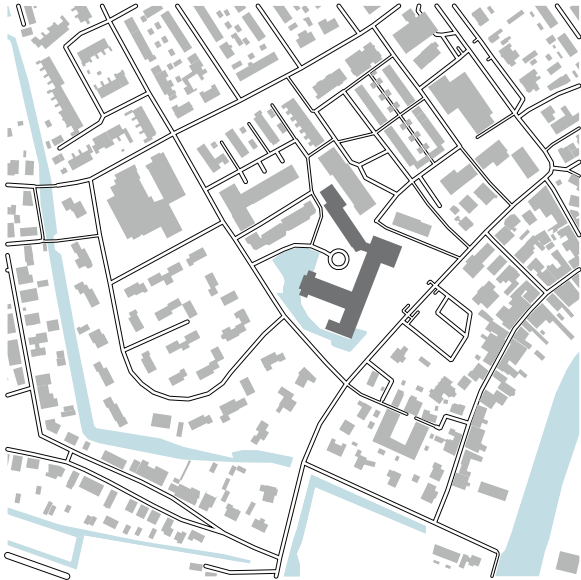


Ground floor plan

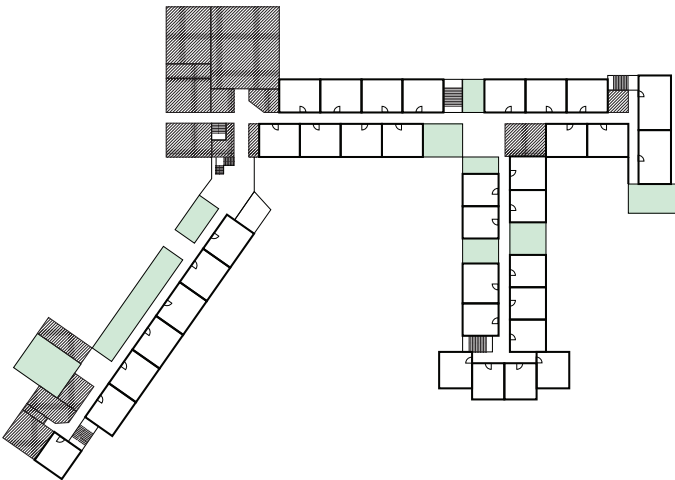


1st floor plan

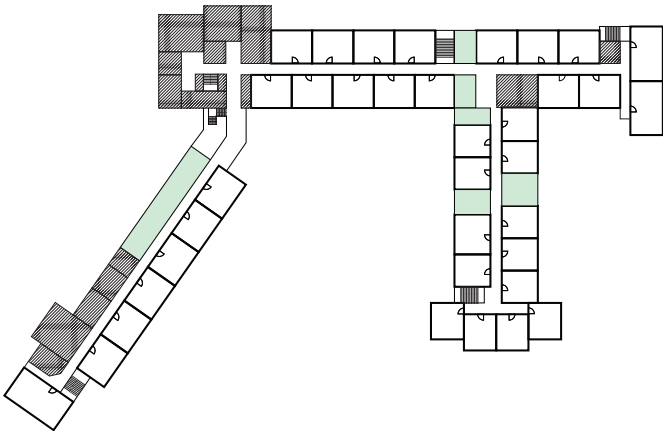
Fieldwork: Loenen



- Individual unit
- Collective space



Ground floor plan



1st floor plan

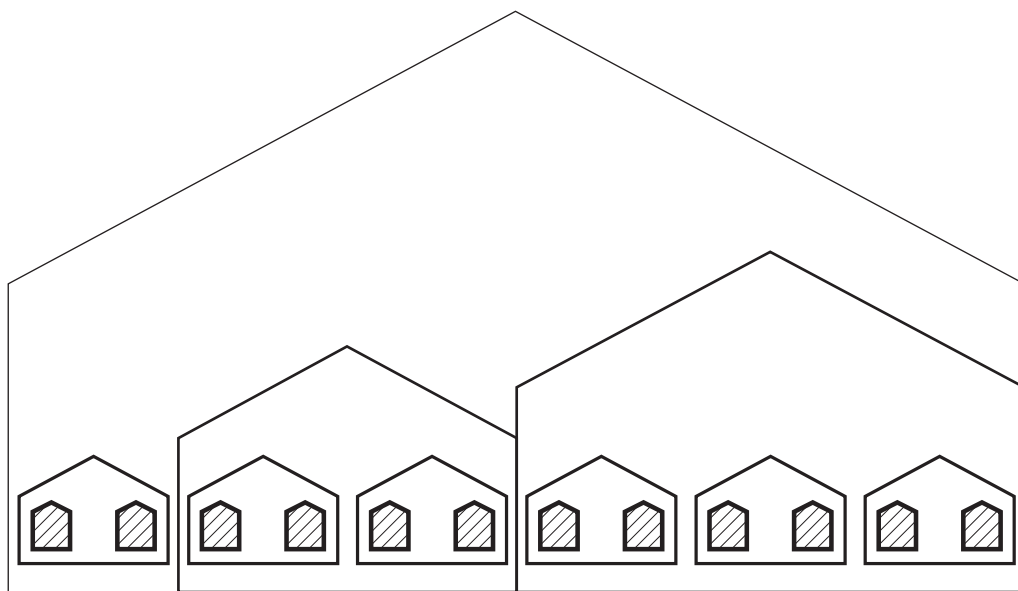


How to make
a new family?

“ Gradual expansion of social environment for intimate relationship ”

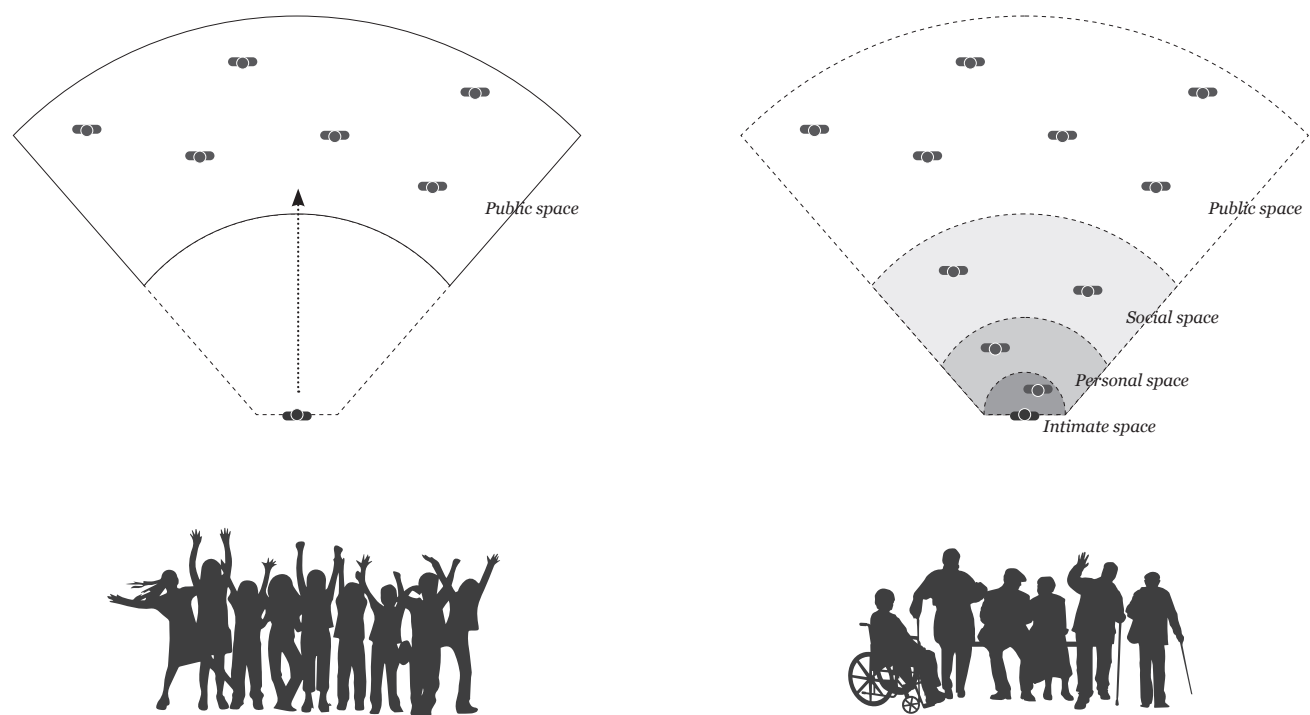
“ Elderly optimized scale of living environment ”

“ Link between the elderly and society ”



" Gradual expansion of social environment for intimate relationship "

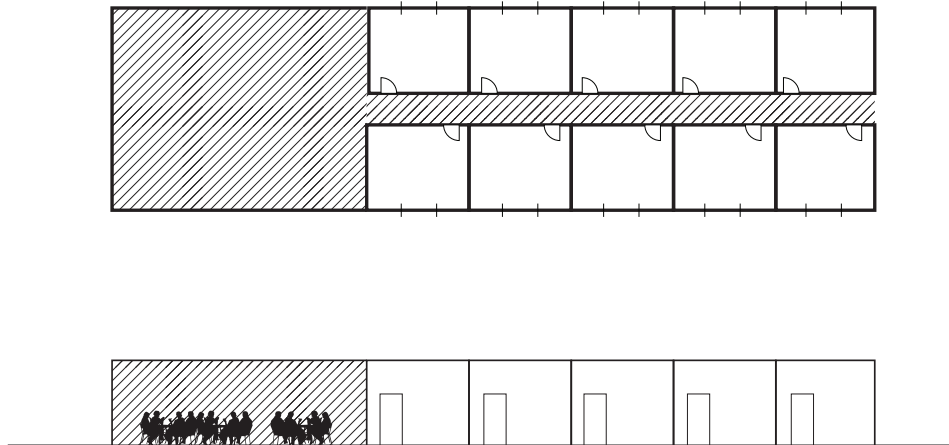
Social interaction steps



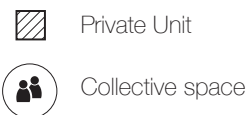
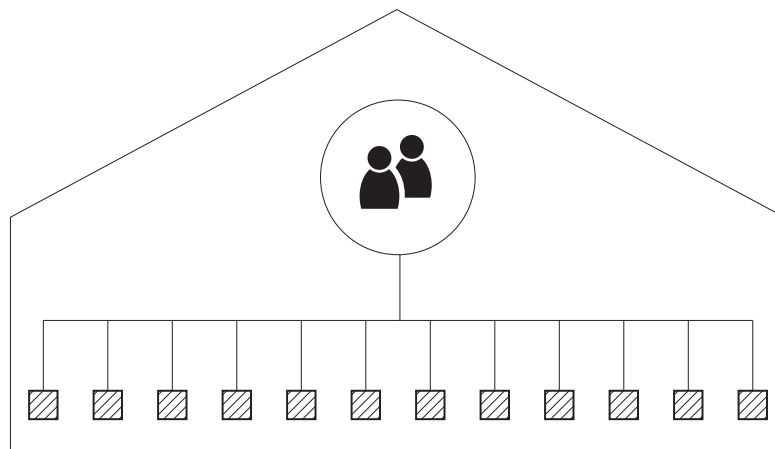
Young people

Elderly people

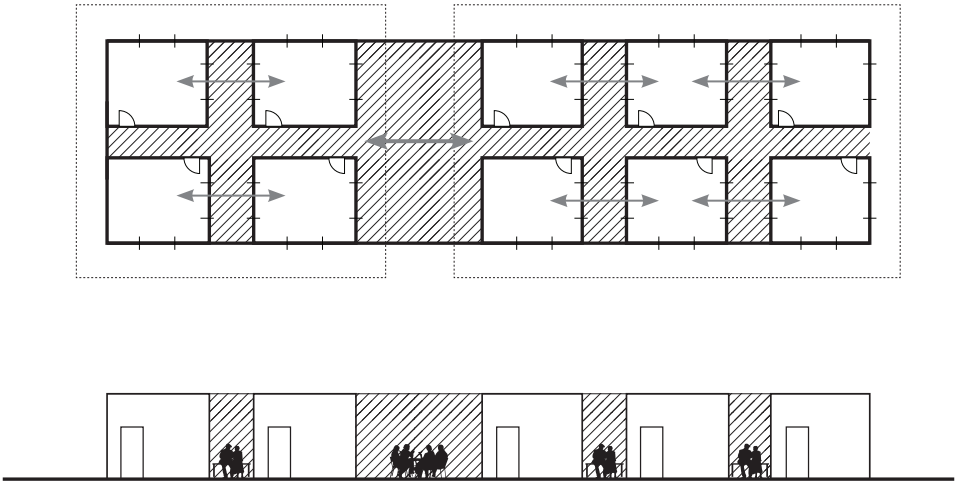
Current situation



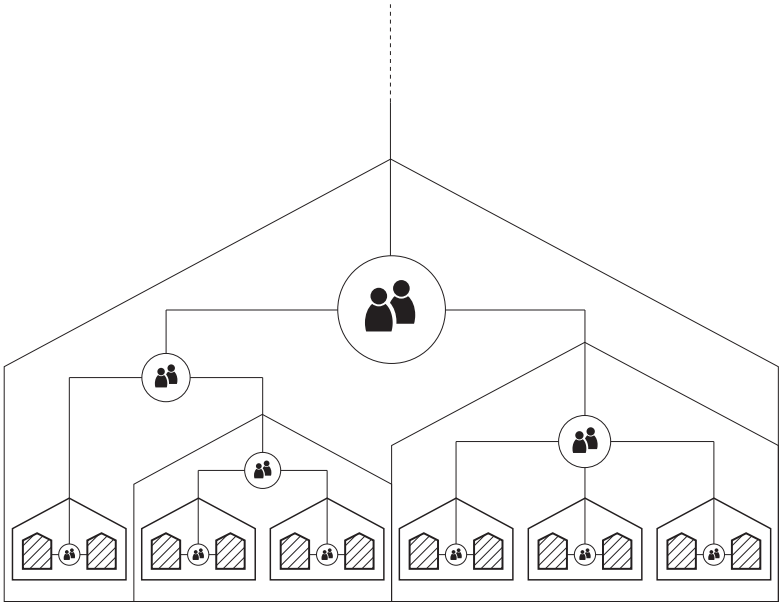
"Where is the link to the neighbour who lives next door?"





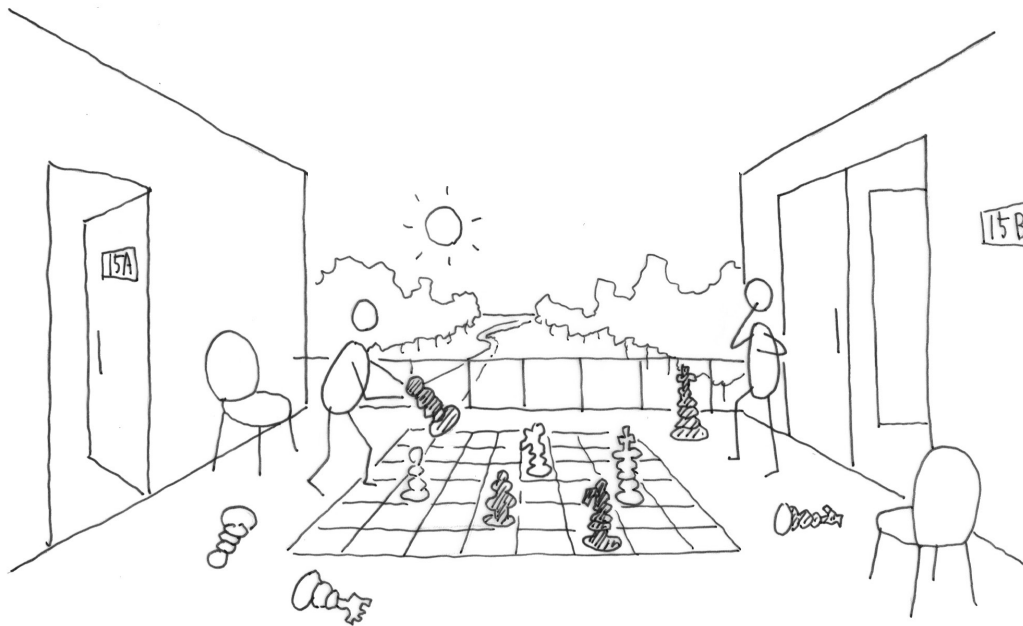
Intimate in-between space



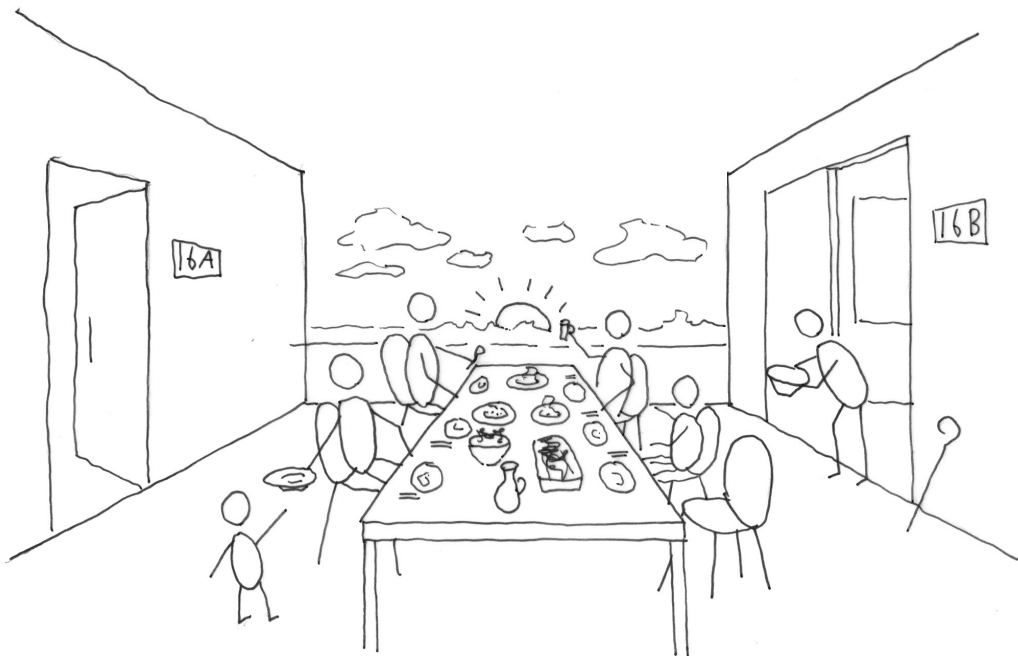
“Intimate relationship with your direct neighbor”



-  Private Unit
-  Collective space



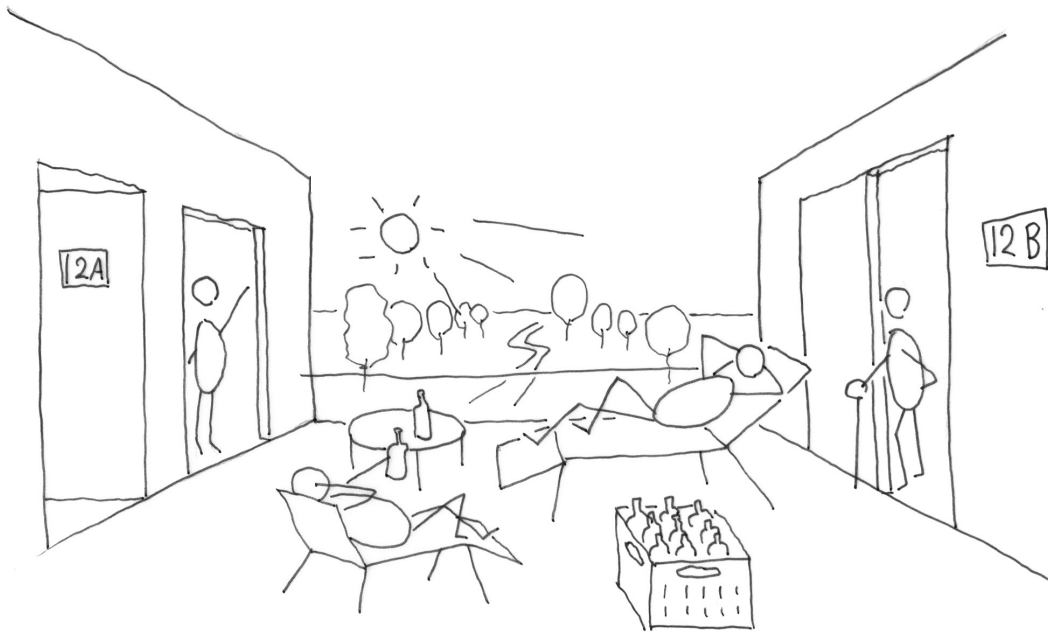
Playing game



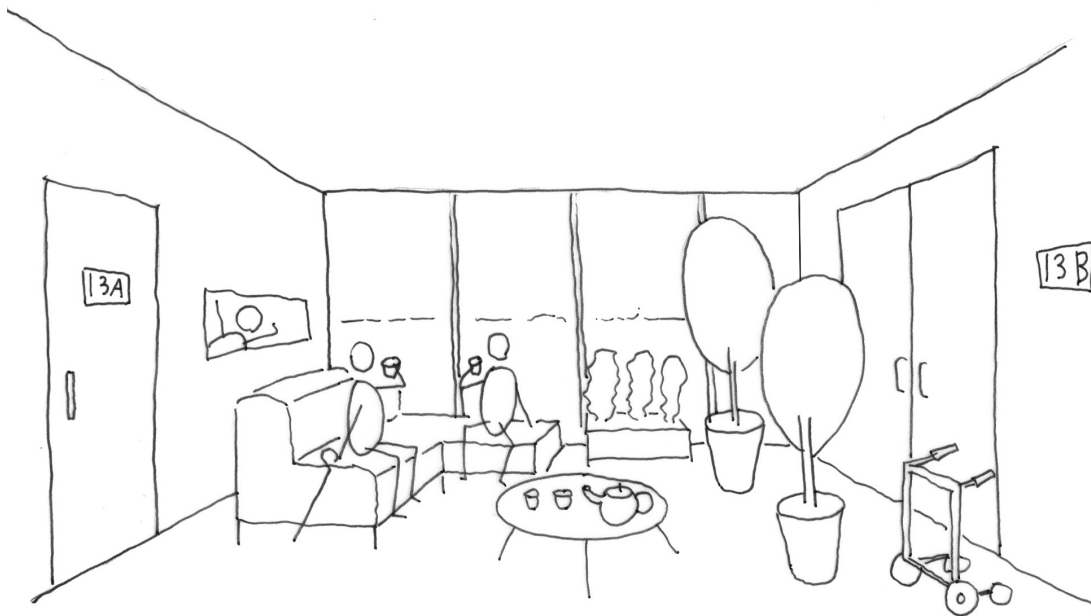
Having dinner together



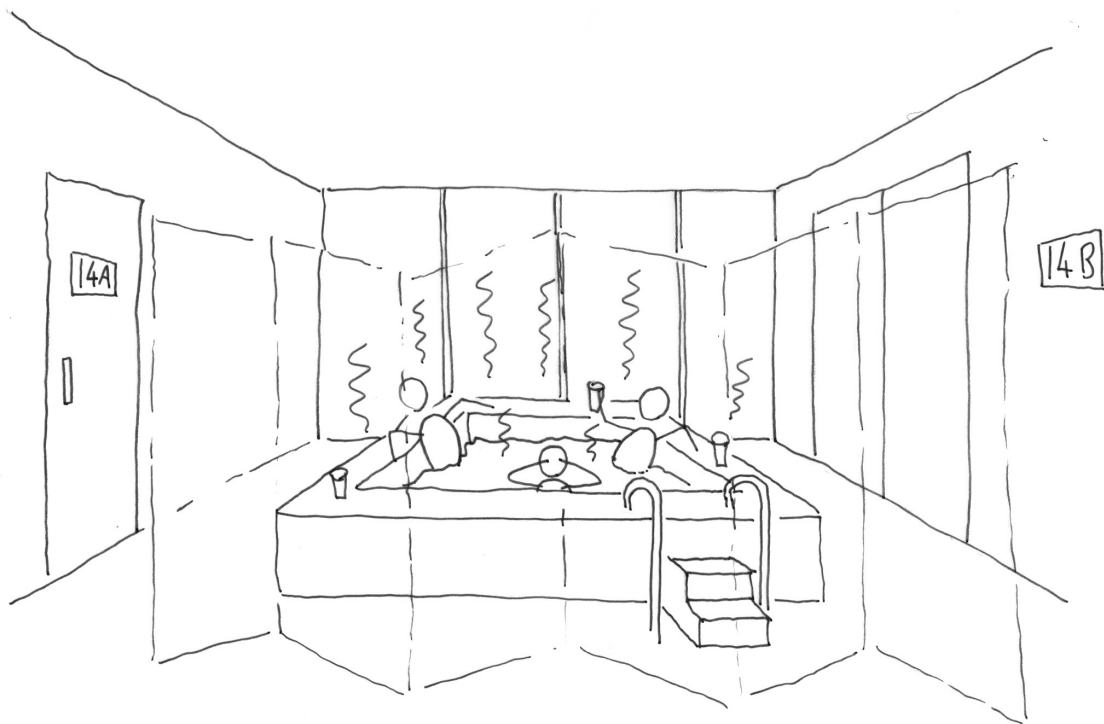
Garden farm



Sunbathing

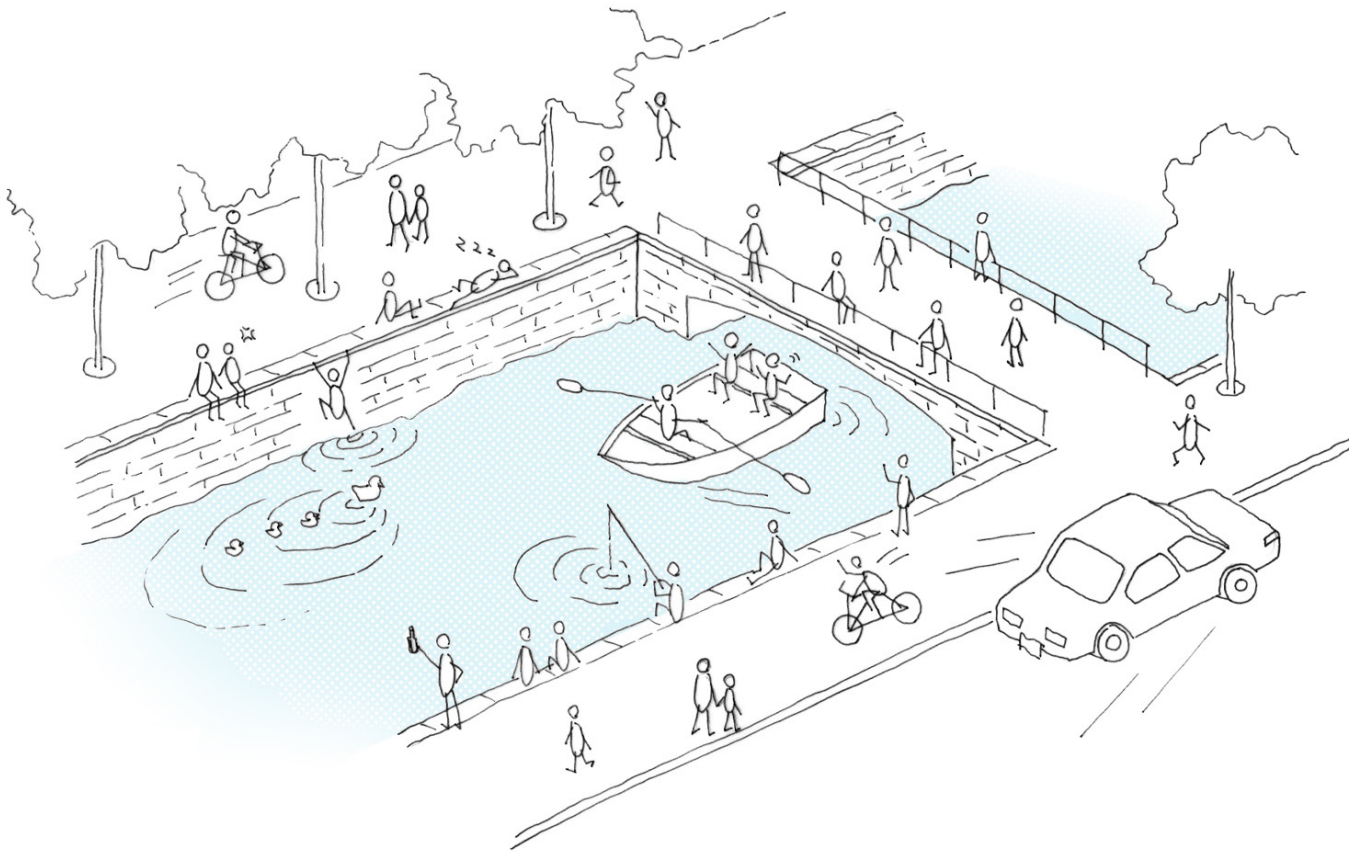


Tea time - Expanded living room



Jacuzzi bath

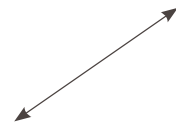
Canal



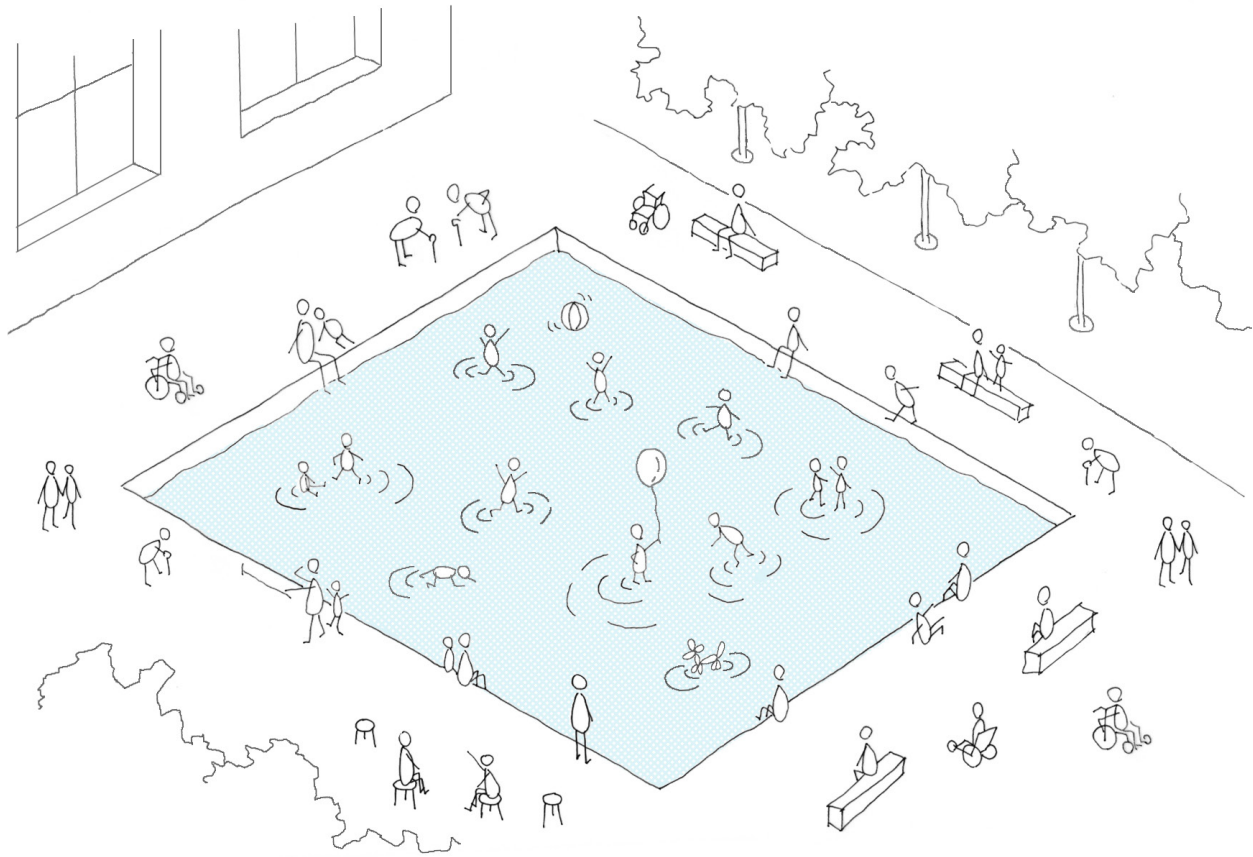
" Inaccessible water

High risk of falling into water for the elderly

Lack of space around "



Shallow mirror pool

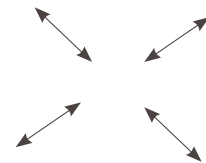


“ Accessible water

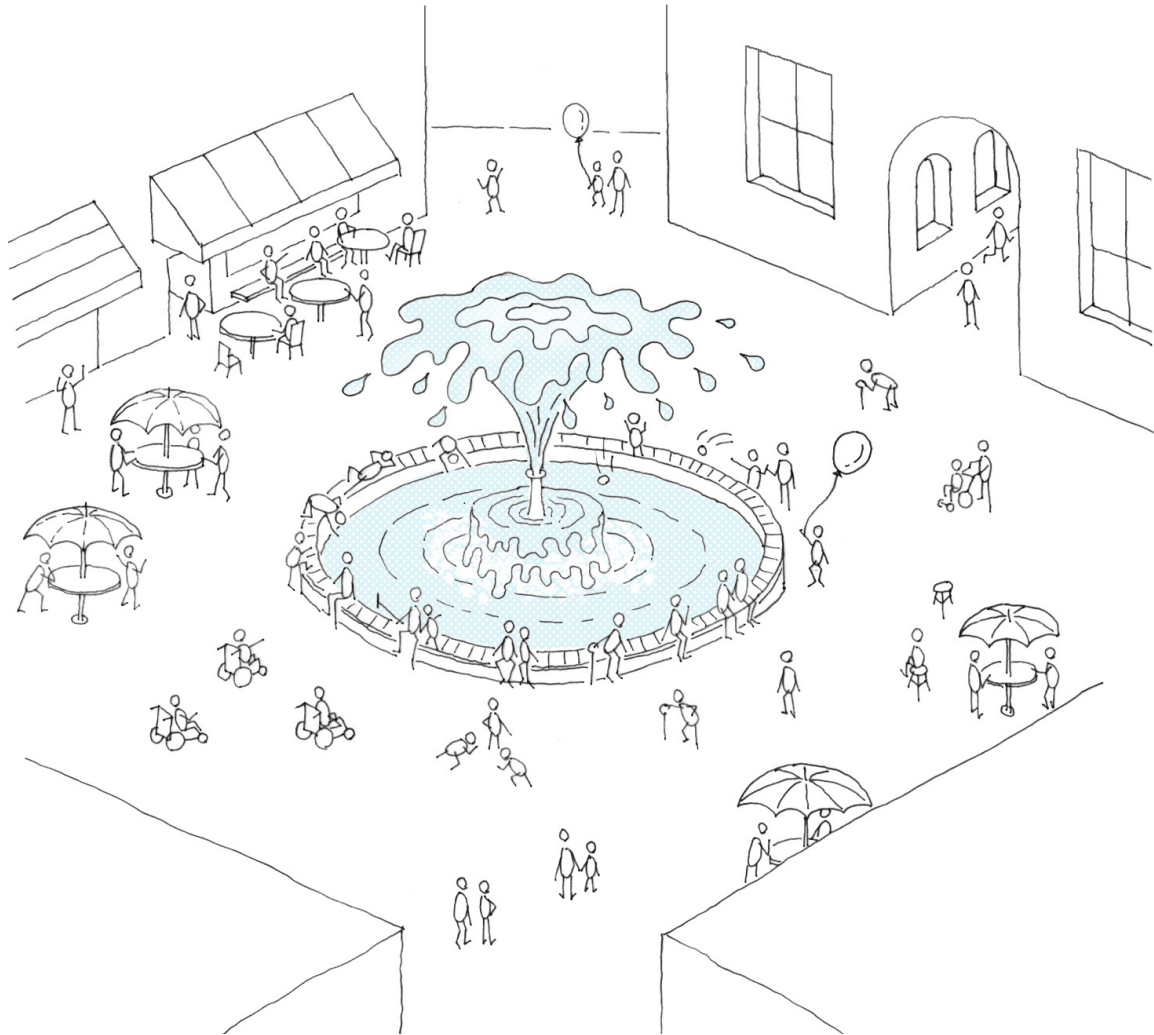
Less risk of falling into water

Silent water feature

Available in various seasons ”



Water Fountain

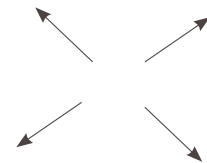


"Semi-accessible water

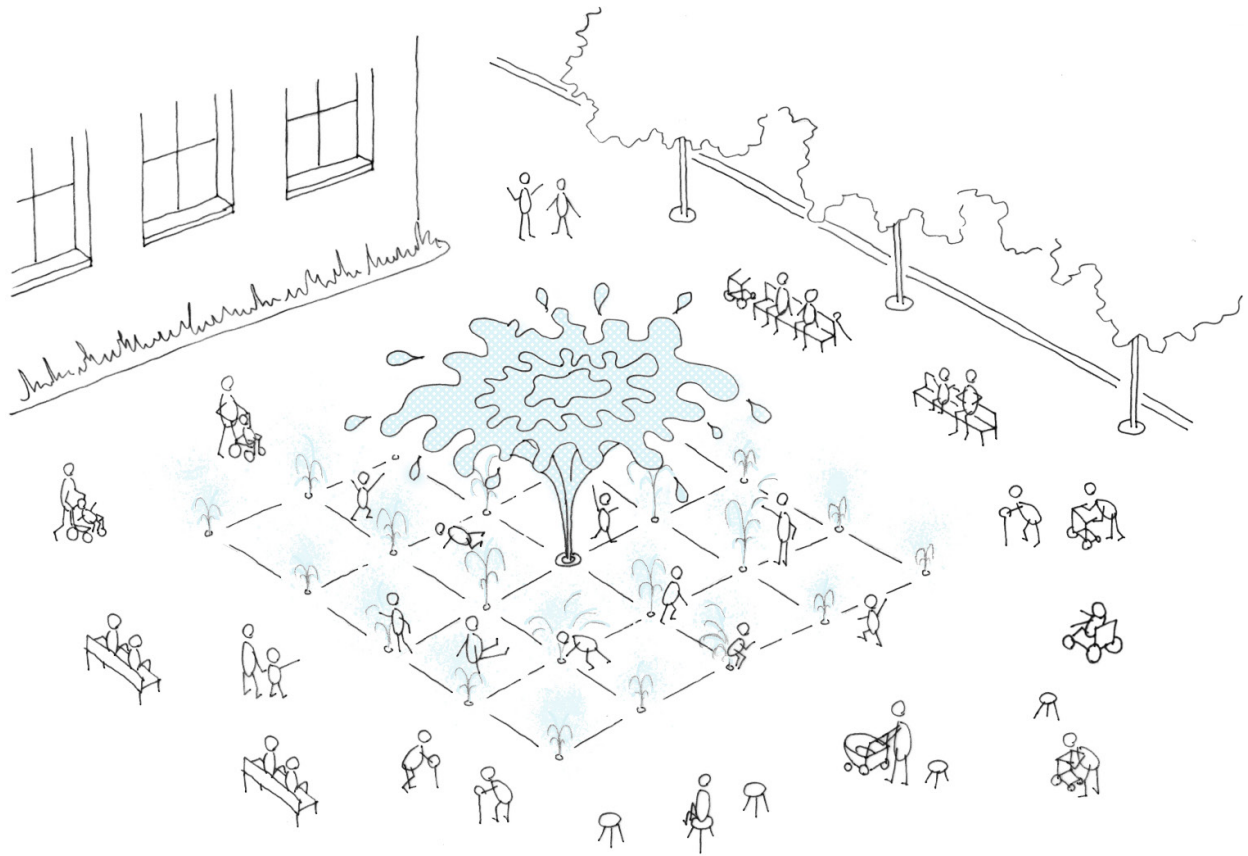
Meeting point

Outward direction

Sounds of water "



Dry fountain



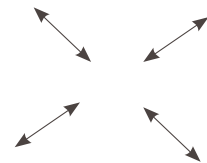
“ Accessible water

No risk of falling into water

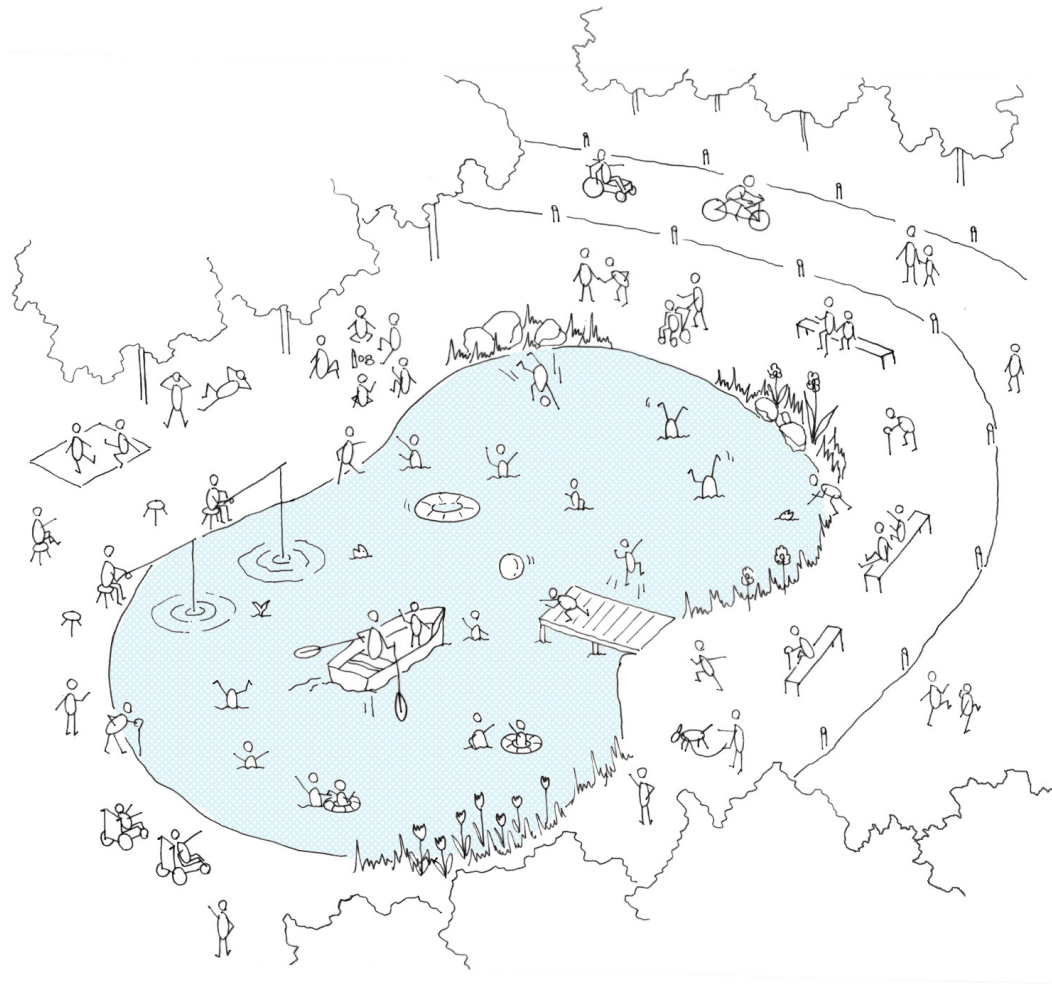
Active water feature for all ages

Multi-functional space

Sounds and rhythm ”



Lake



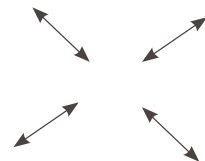
“ Accessible water

Natural water feature

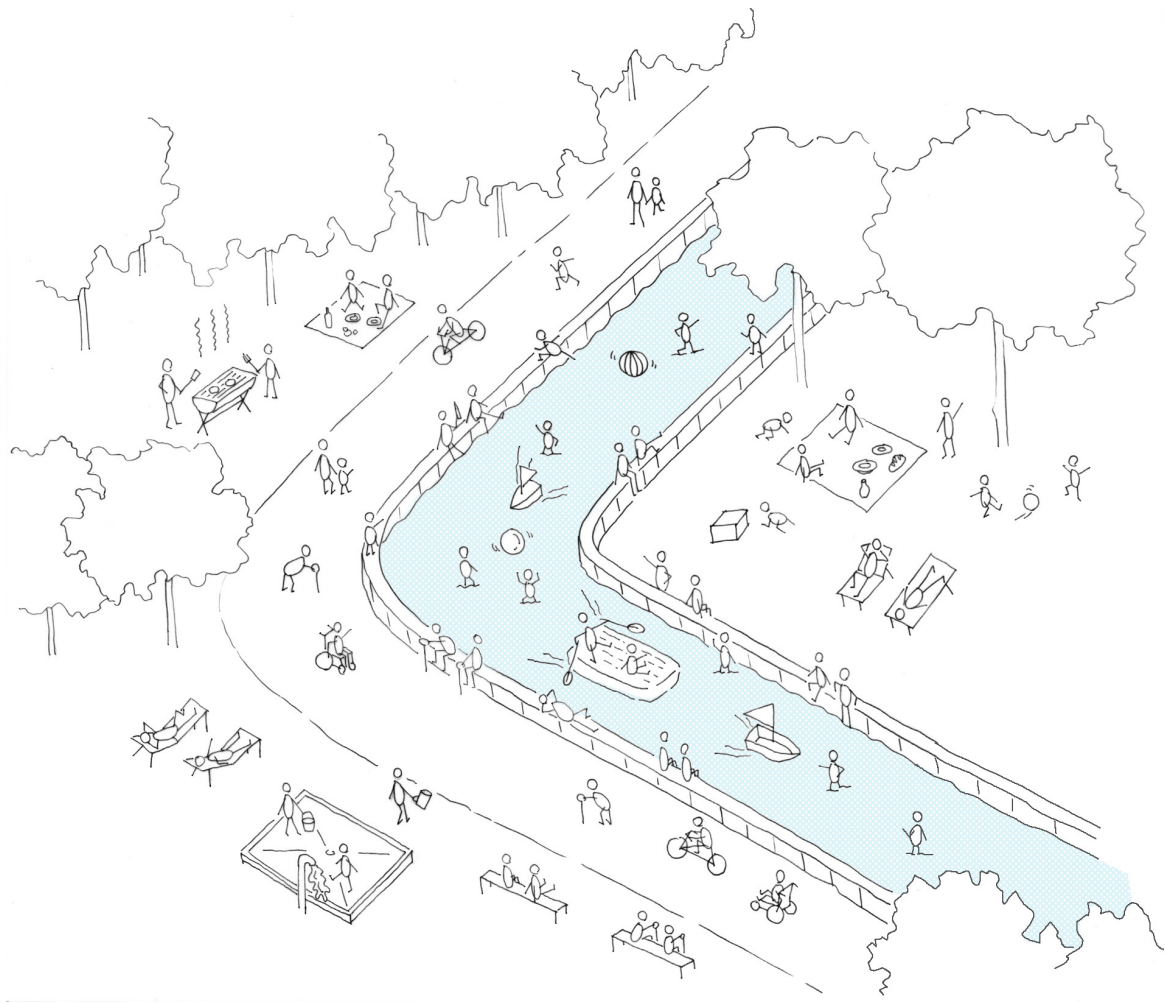
Surrouned by nature

Large scale

Various activities ”



Artificial water stream



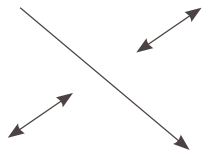
“ Accessible water

Water flow

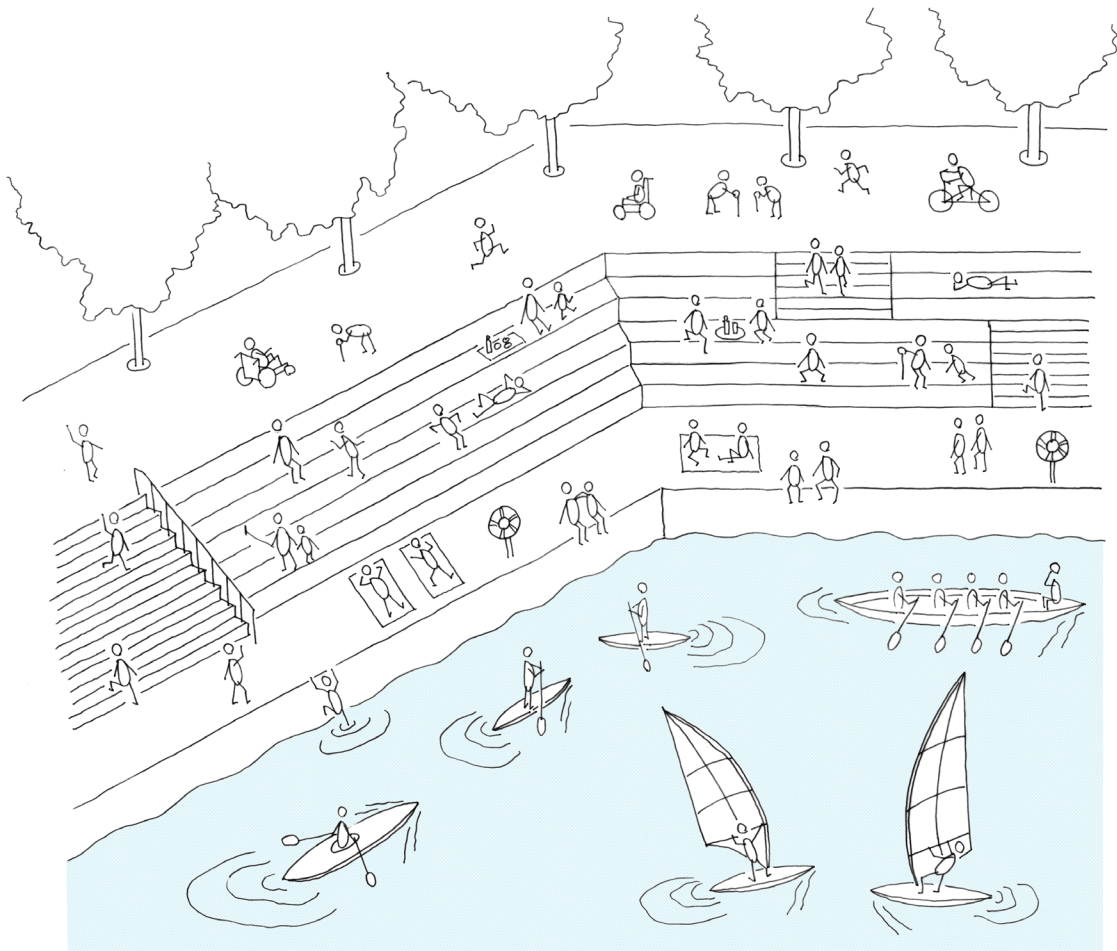
Active water feature for all ages

Small scale

Directional ”



Water front



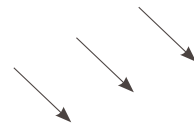
“ Accessible water

Natural water feature

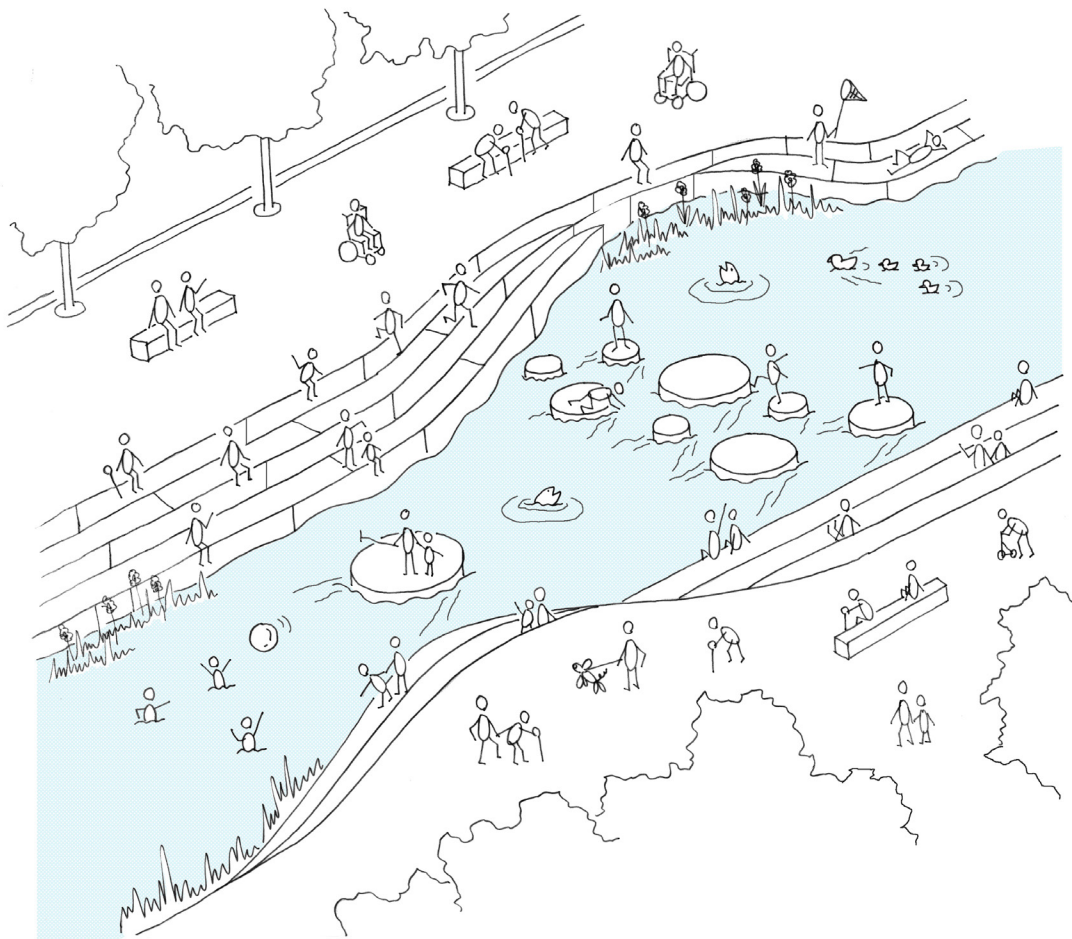
Surrouned by nature

Large scale

Various activities ”



Urban water stream



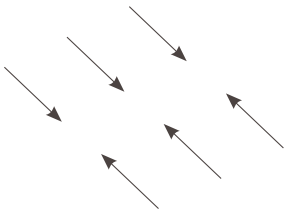
“ Accessible water

Water flow

Active water feature for all ages

Small scale

Directional ”



Volkstuin

(Community Garden)



" Link between the elderly and society "



Characteristics of community garden



Volkstuinenpark Hofwijck (1921), Amsterdam

Membership

Sense of belonging / Social participation / Collectivity

Sharing

Gardening resources / Knowledge to young people

Small scale

Self-sufficient life / Autonomy

Activity

Interact and socialize with neighbour

Benefits of community garden



De Volkstuinthes, Jan Van Haasteren Comic Puzzle

Social

Spend time with family /
Strengthening social relations in the neighbourhood.

Education

Sharing knowlege, introducing children about gardening and food
production.

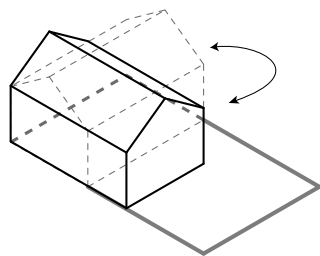
Food

Produce own local food.

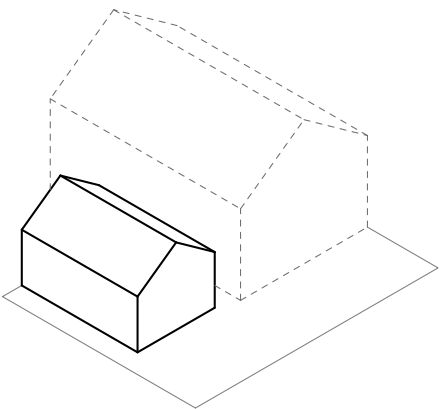
Health

Allowing people to spend more time in nature.
Stimulate a healthier lifestyle.

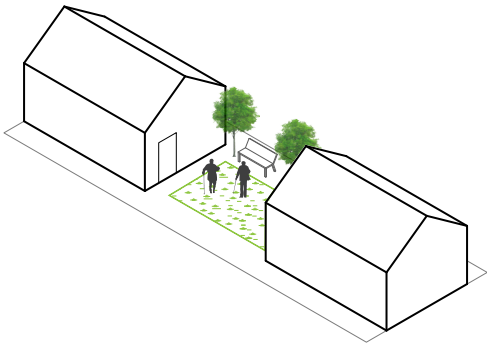
Idea application to living environment



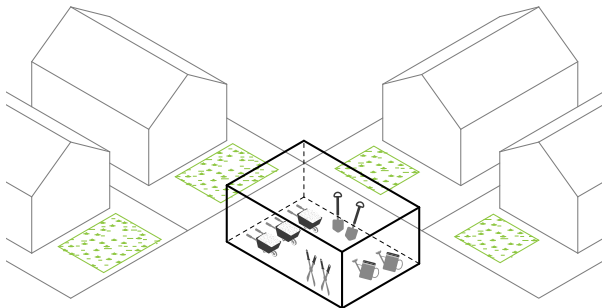
Flexible / Freedom



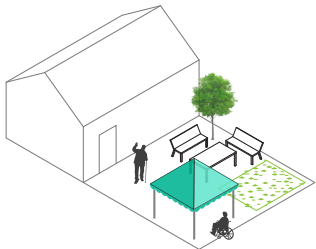
Small scale



Intimate relationship



Sharing



Activity