



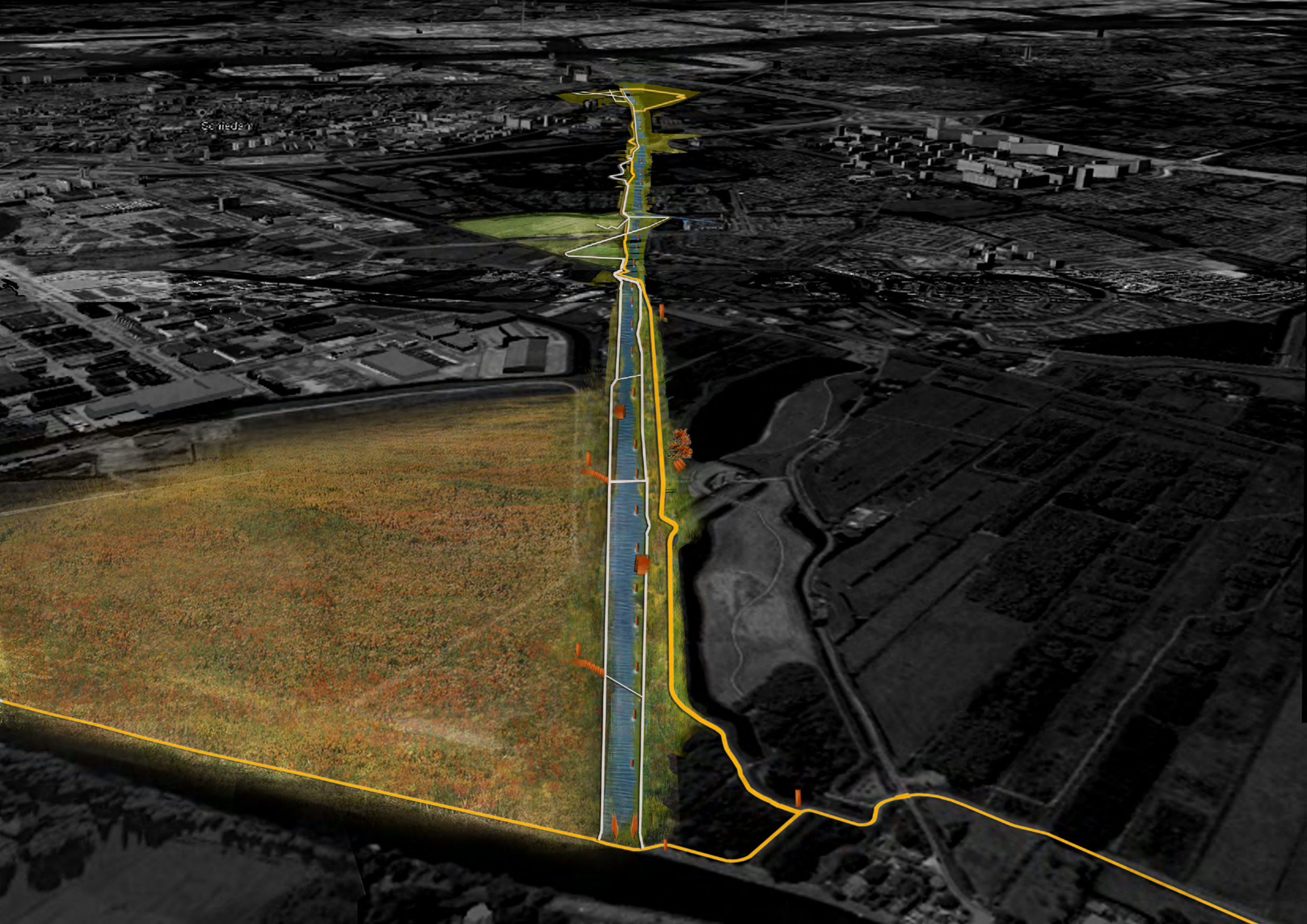
Rethinking Poldervaart

a time-resistant structure connecting the fragmented landscape

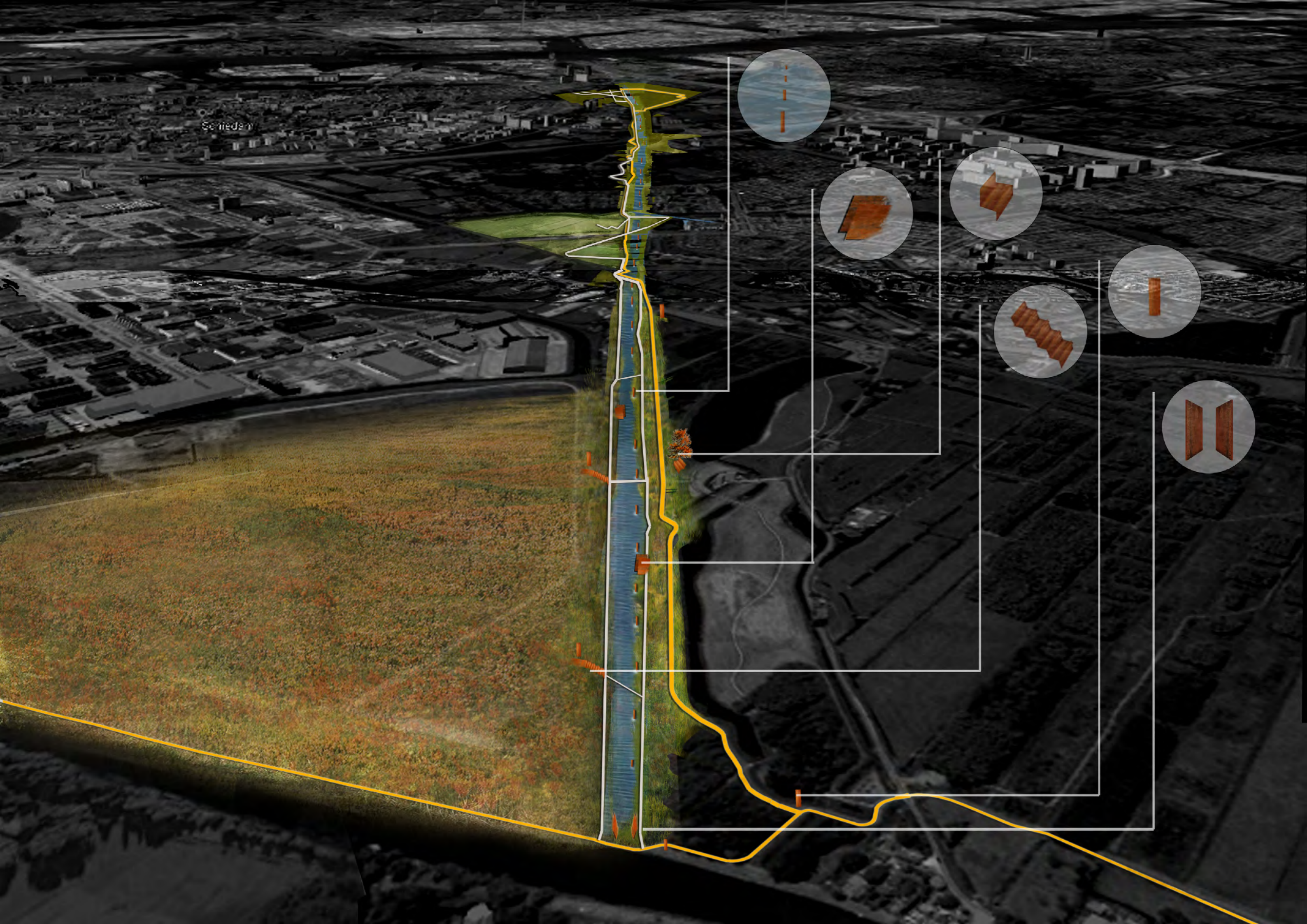
Ilya Tasioula

Mentors: Denise Piccinini
Teake Bouma

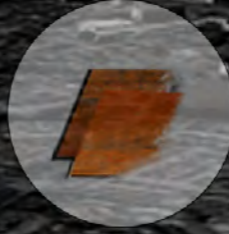
Delegate of the Board of Examiners:
André Ouwehand

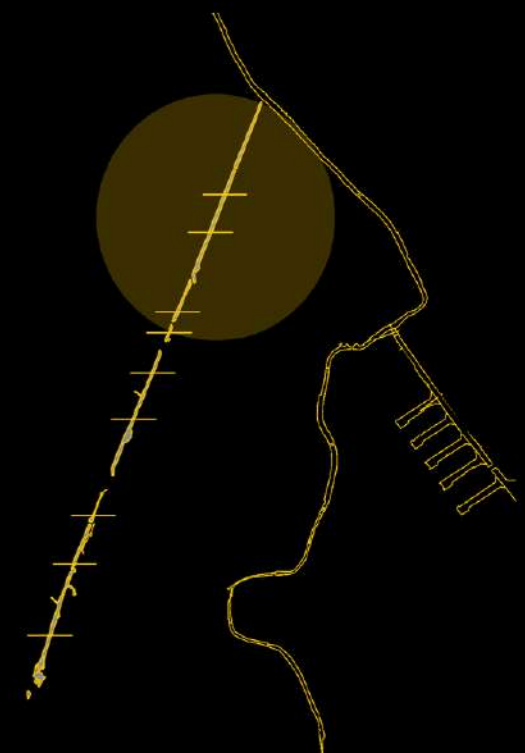
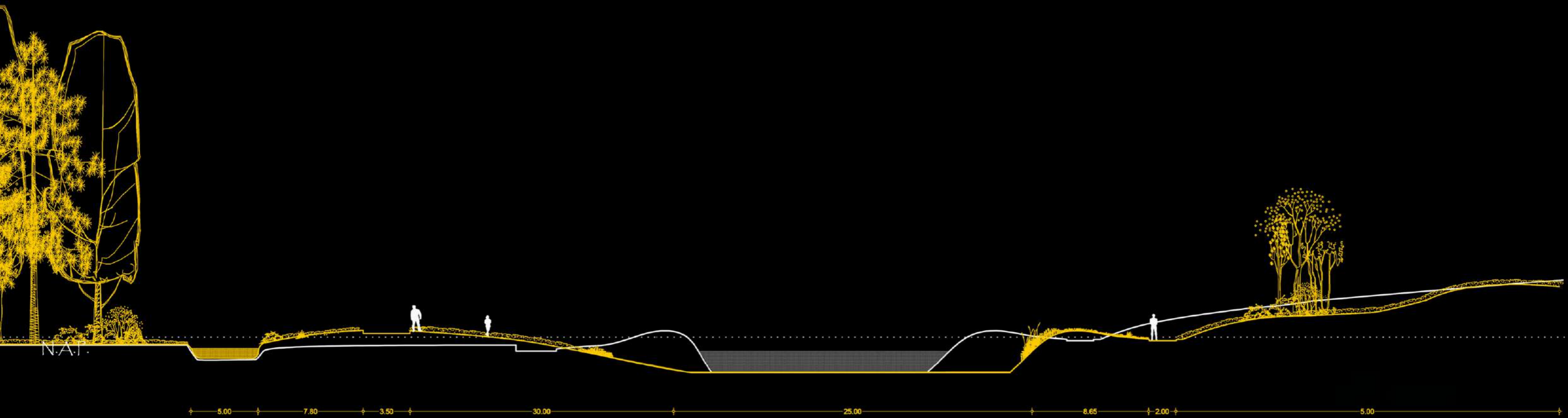


Sriedem

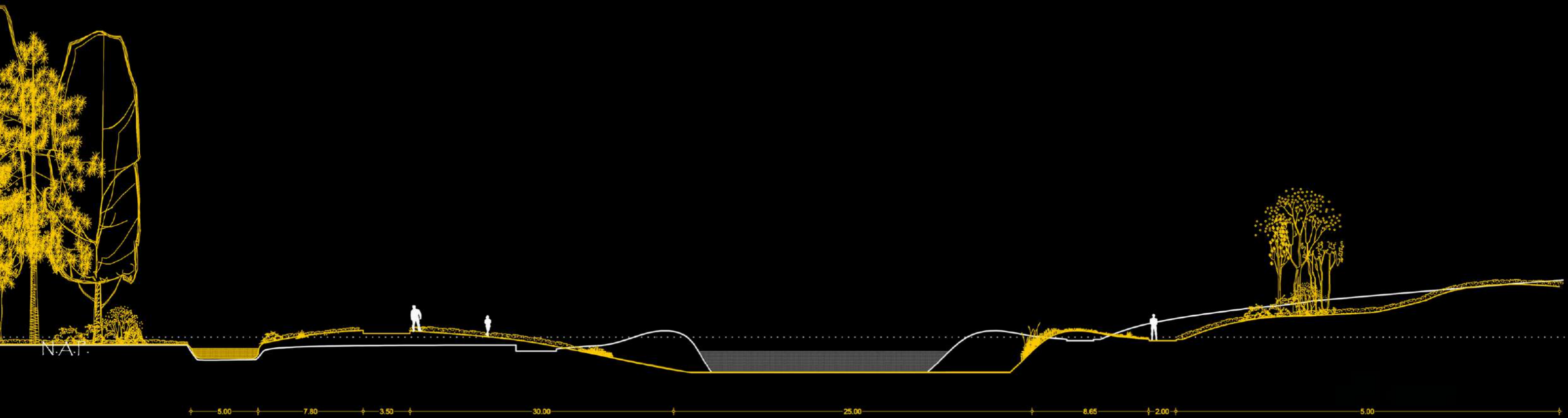


Srieden

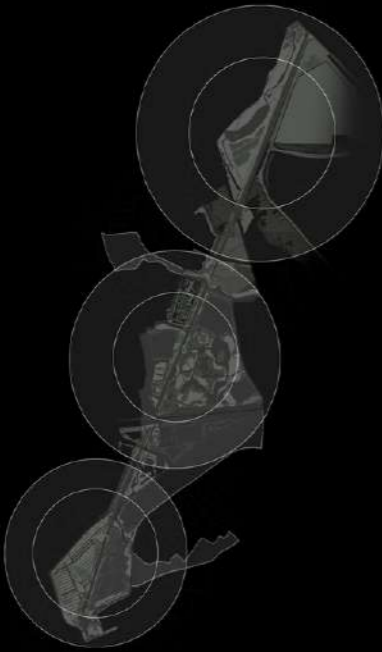




current situation
 intervention



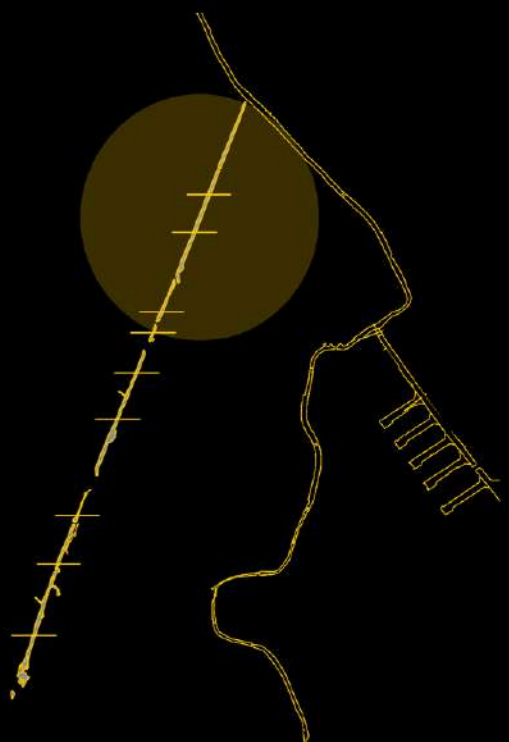
current situation
 intervention



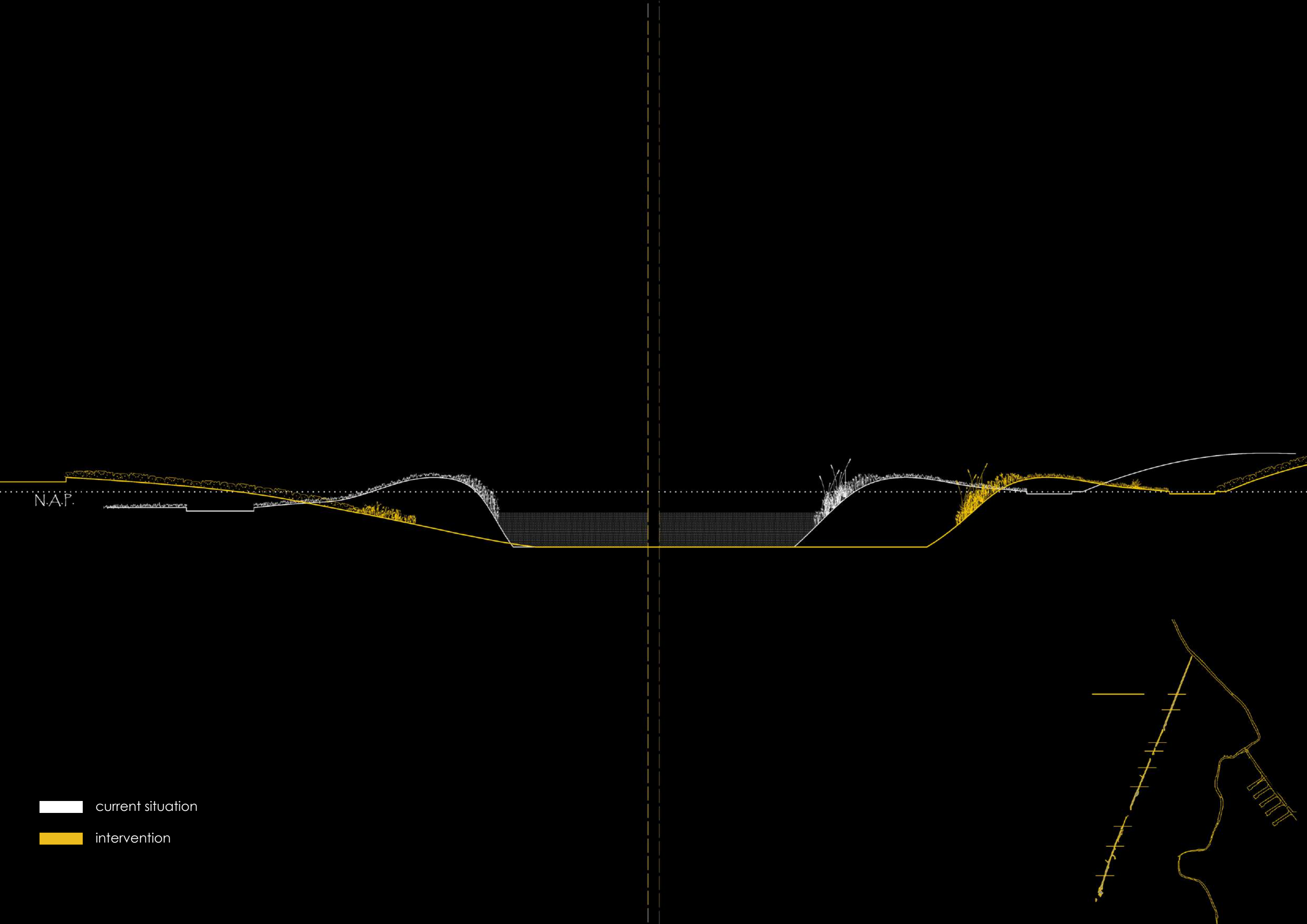
strengthen the 3 characters

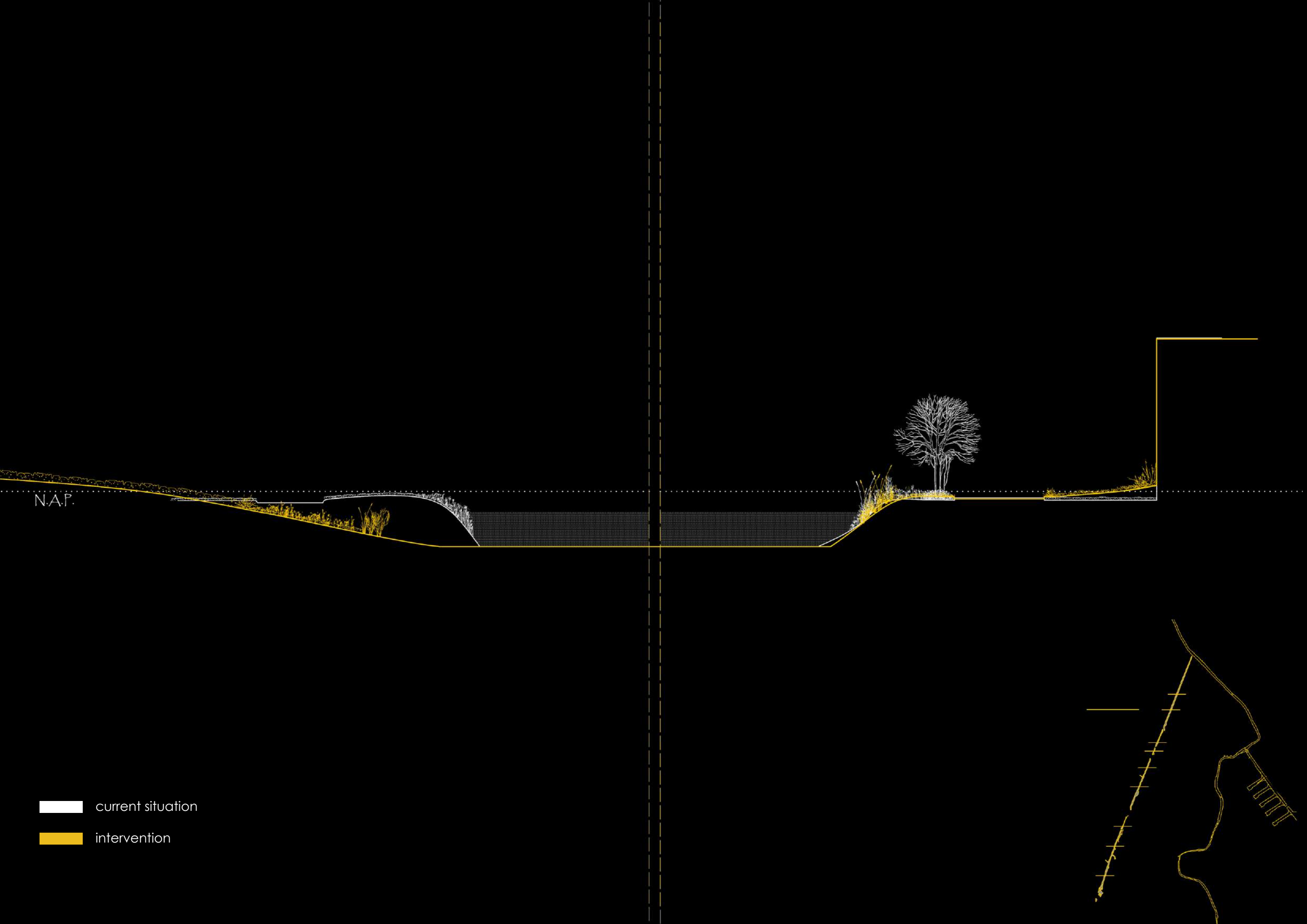


reveal time-resistant structures



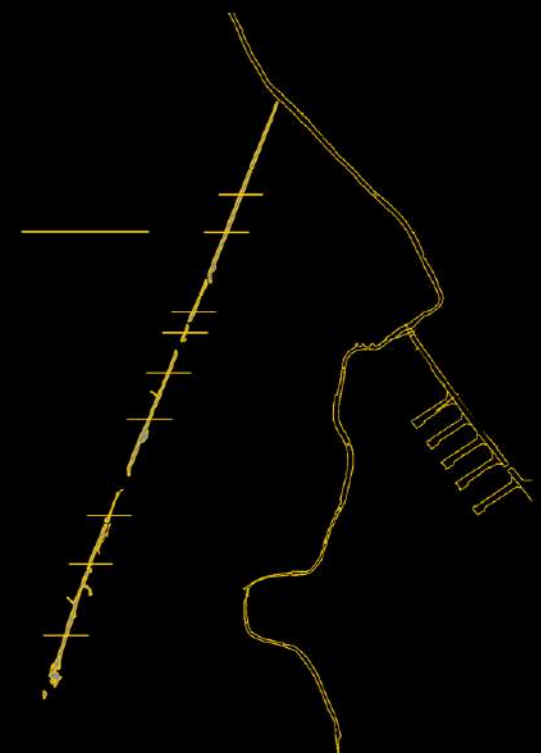
strengthen the 3 characters

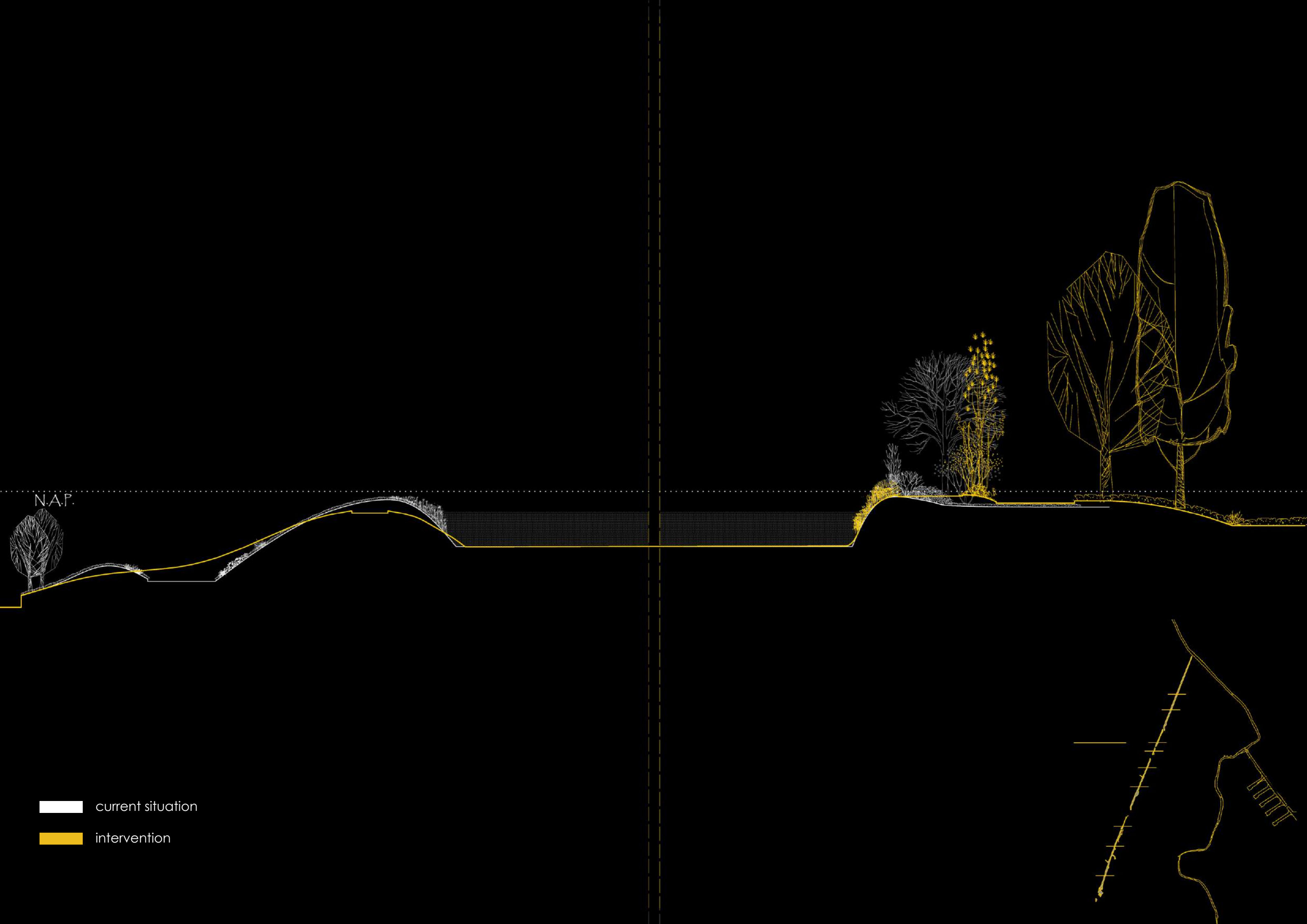


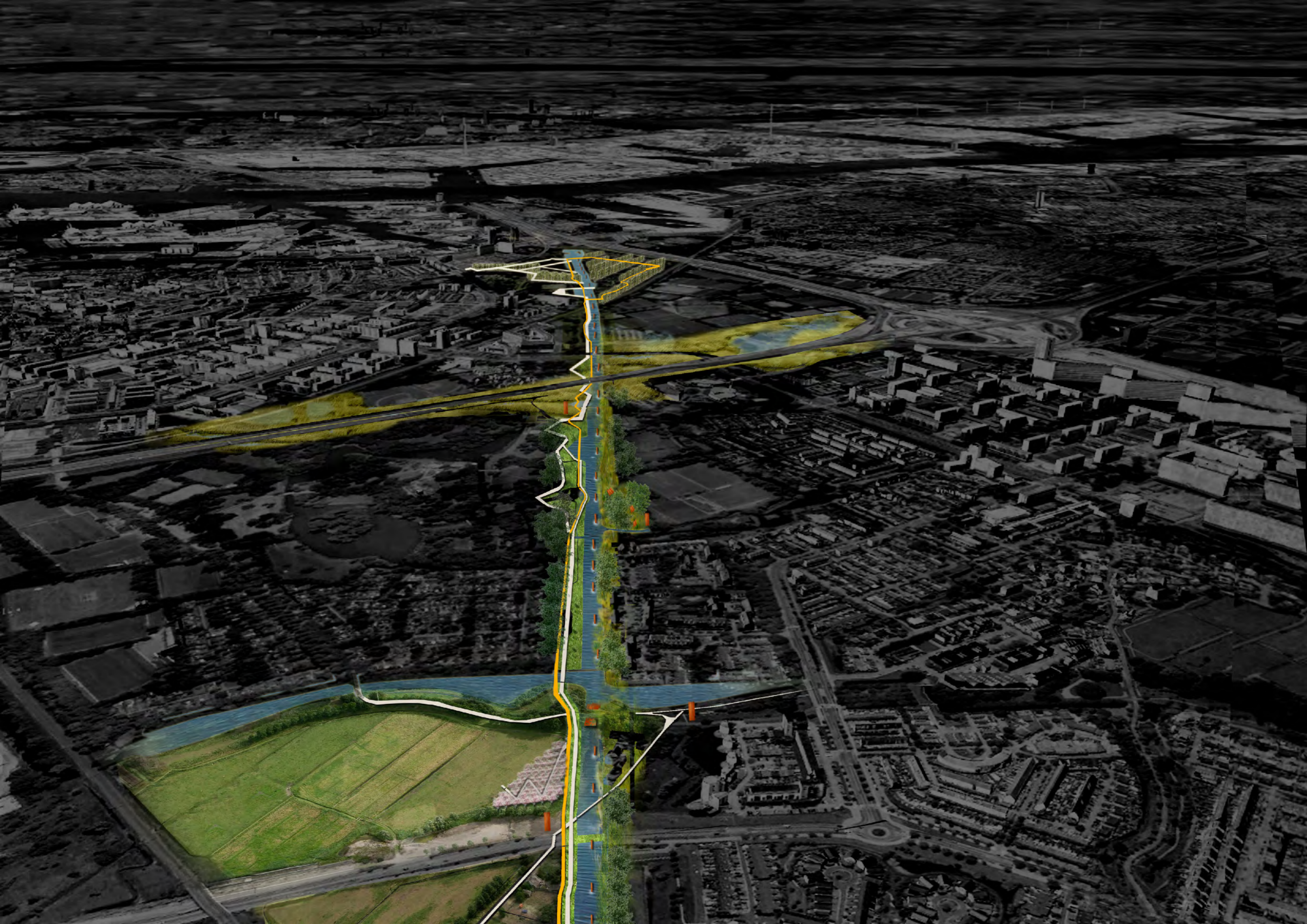


N.A.P.

- current situation
- intervention

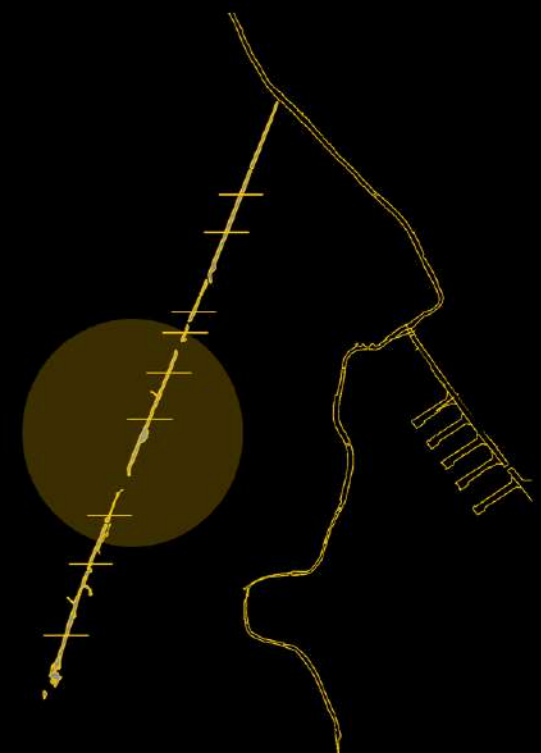








- current situation
- intervention

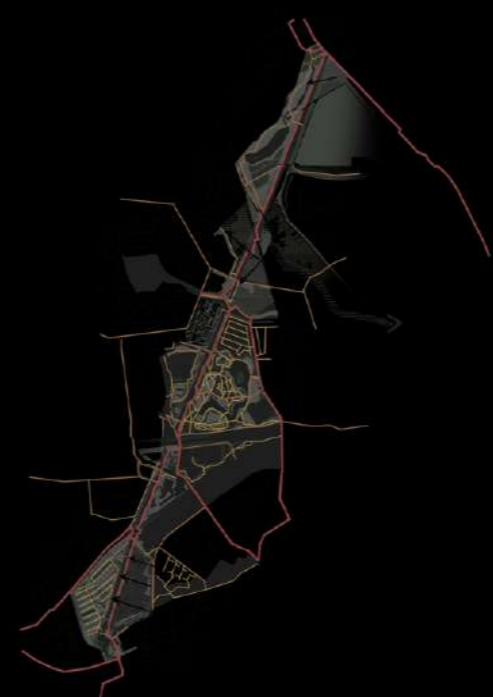




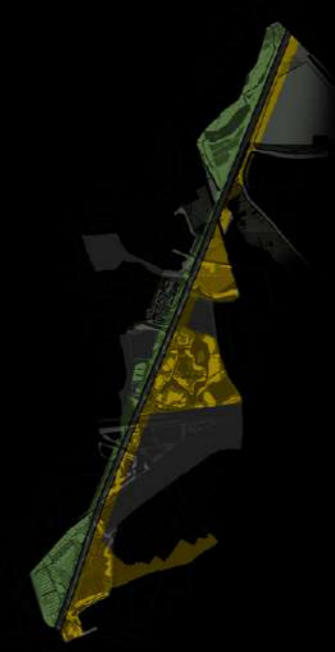
- current situation
- intervention



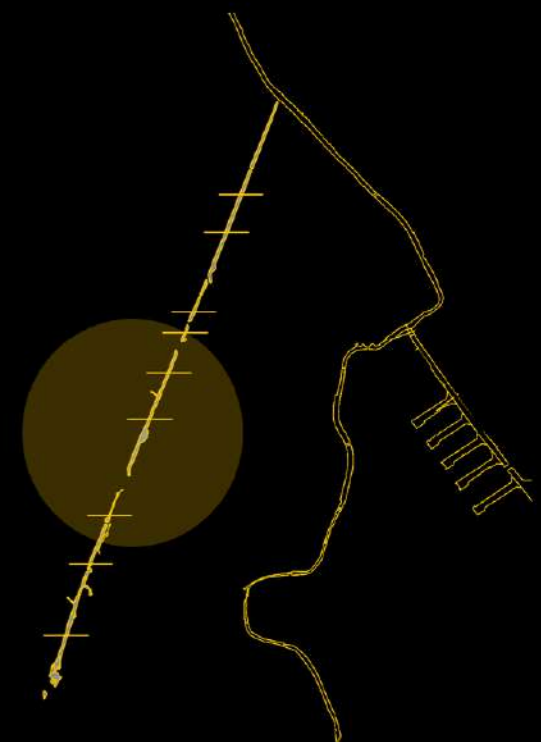
coherency & continuity of the axis



connections among fragments



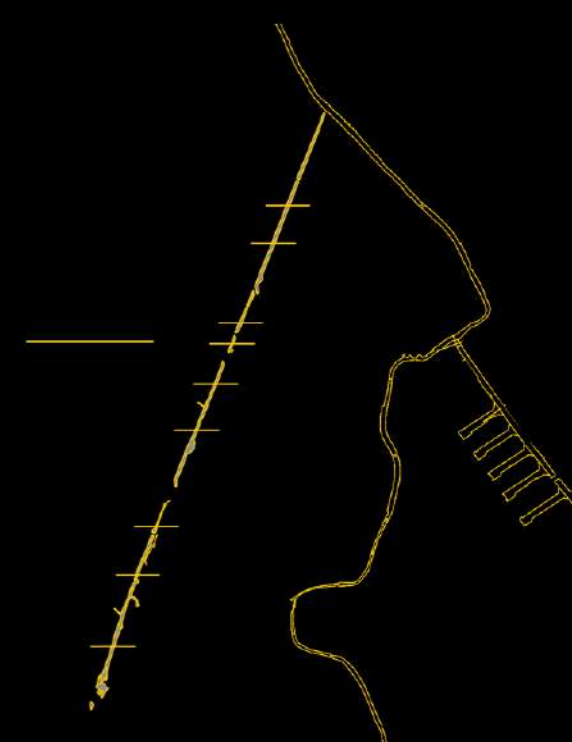
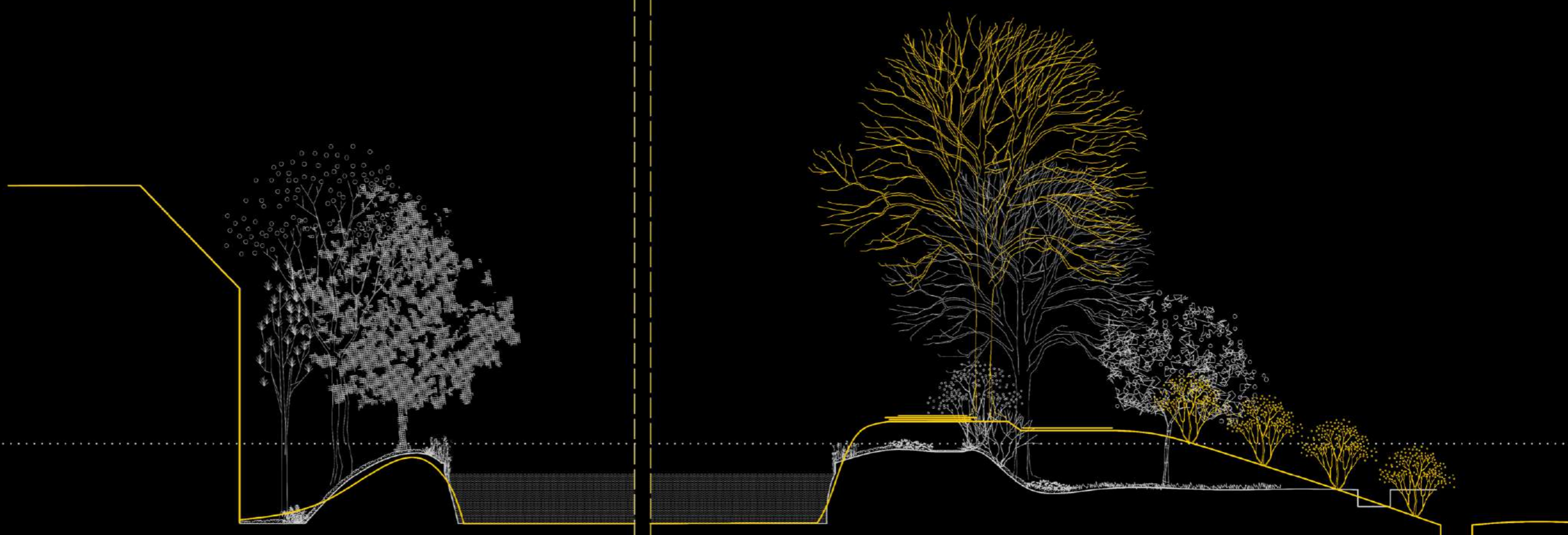
west & east side differences

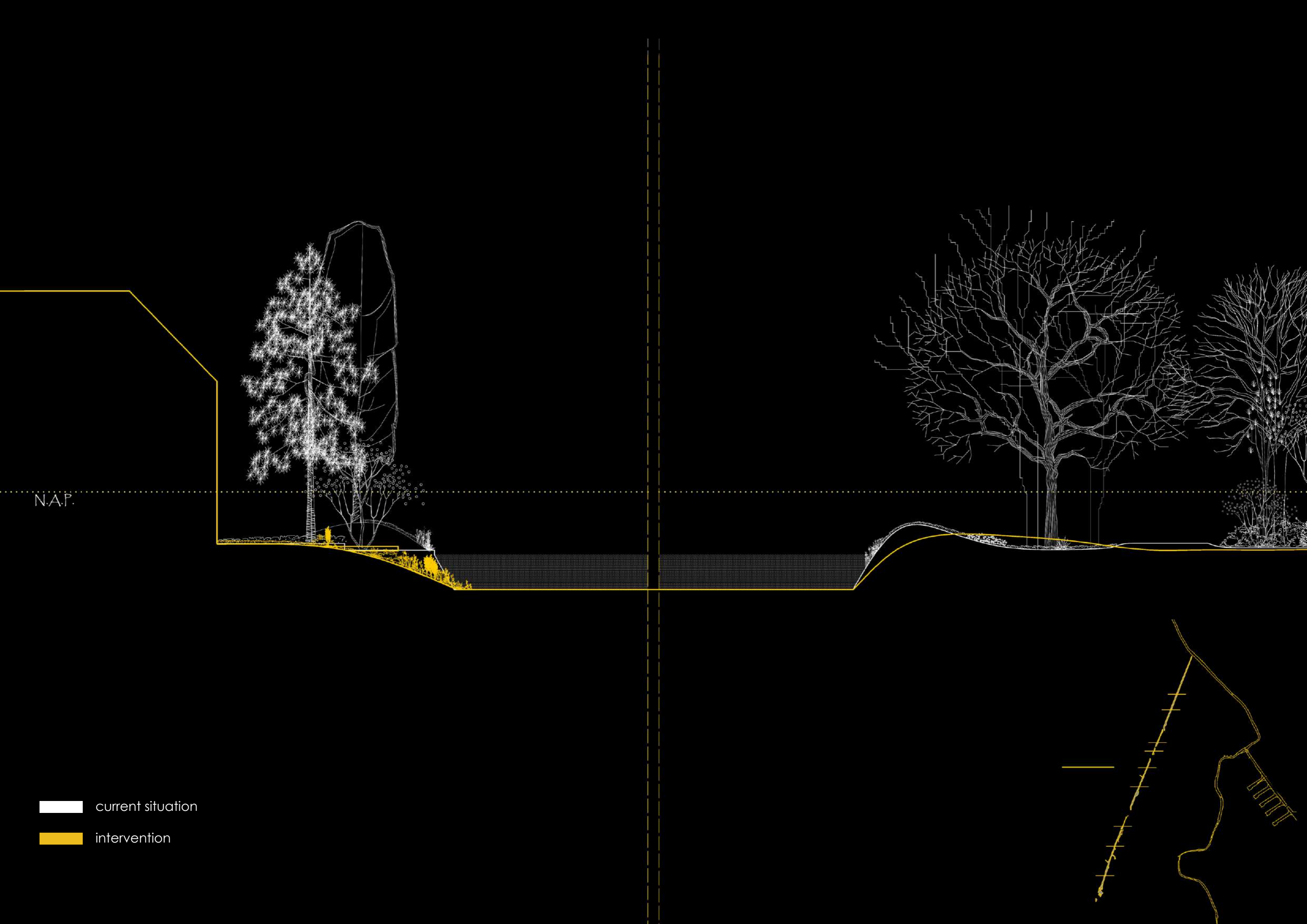


WEST

N.A.P.

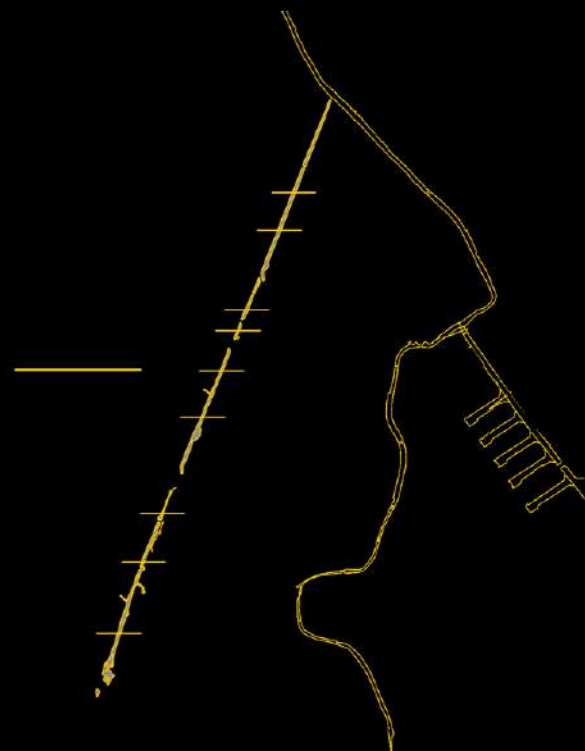
- current situation
- intervention

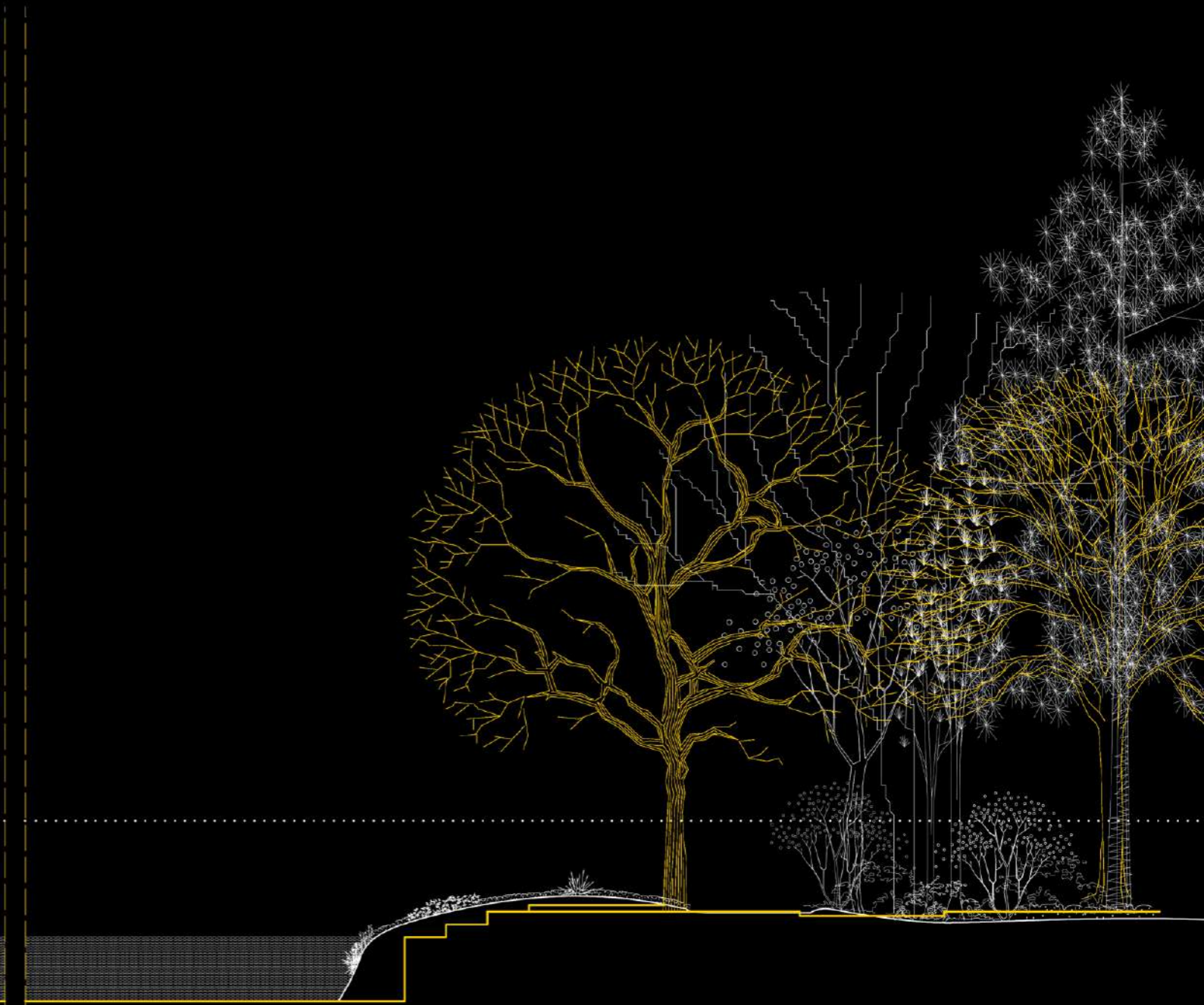
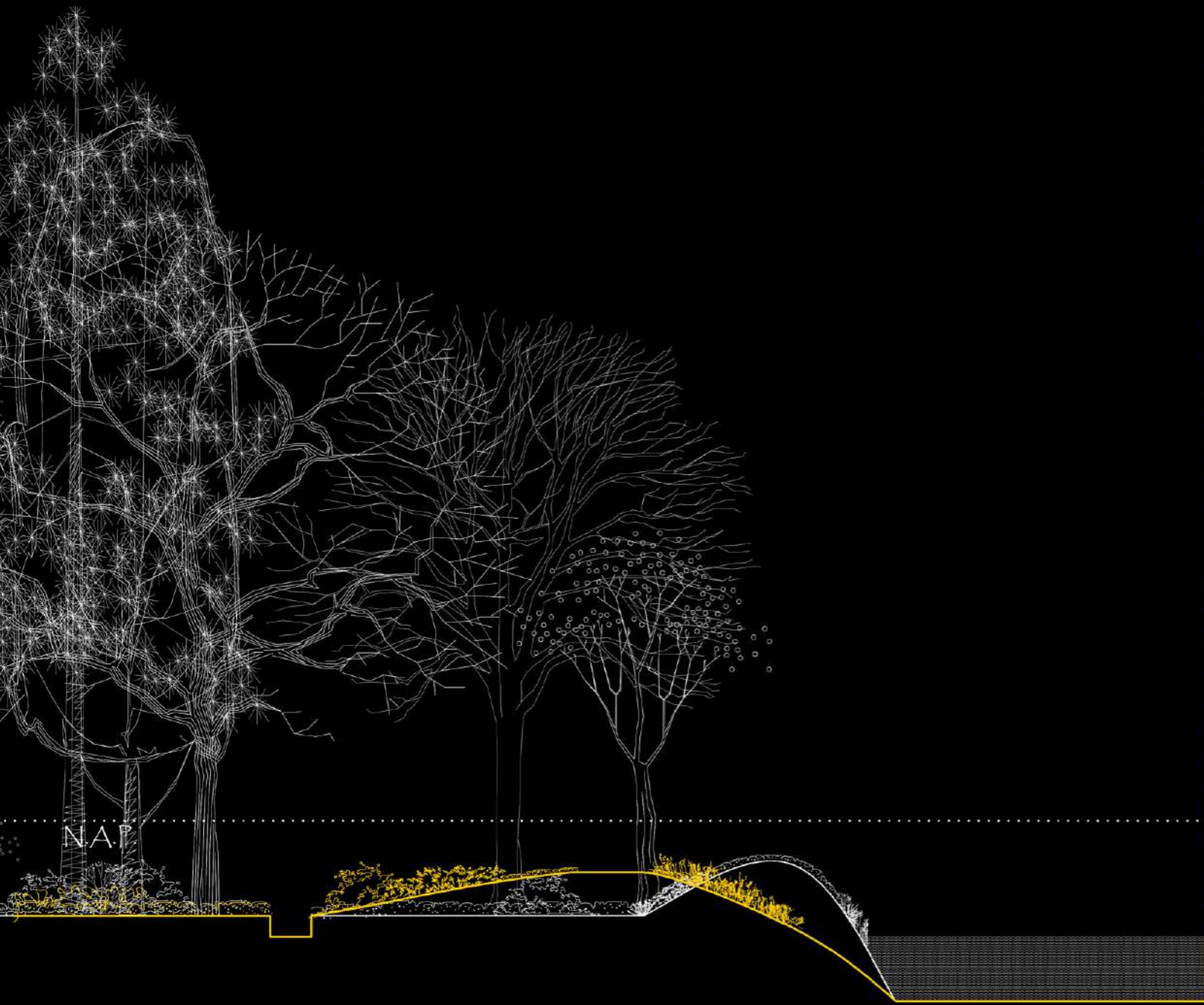




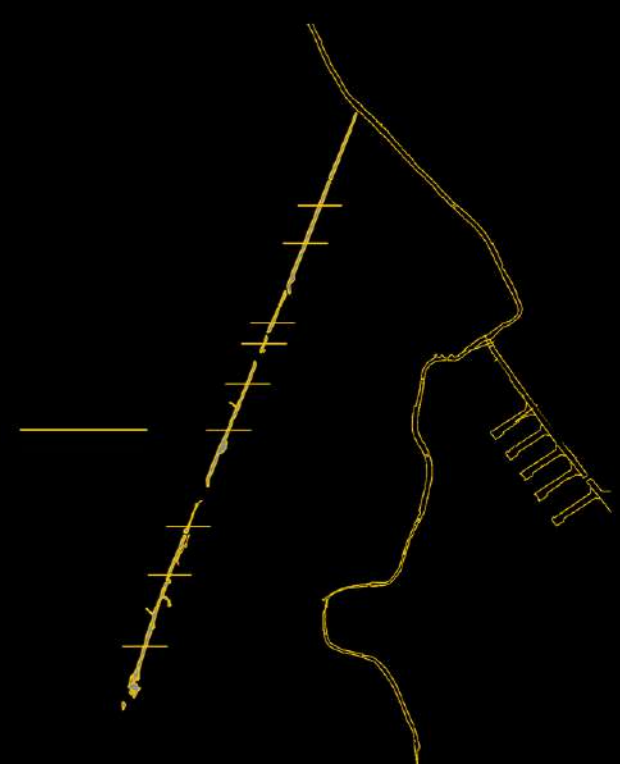
N.A.P.

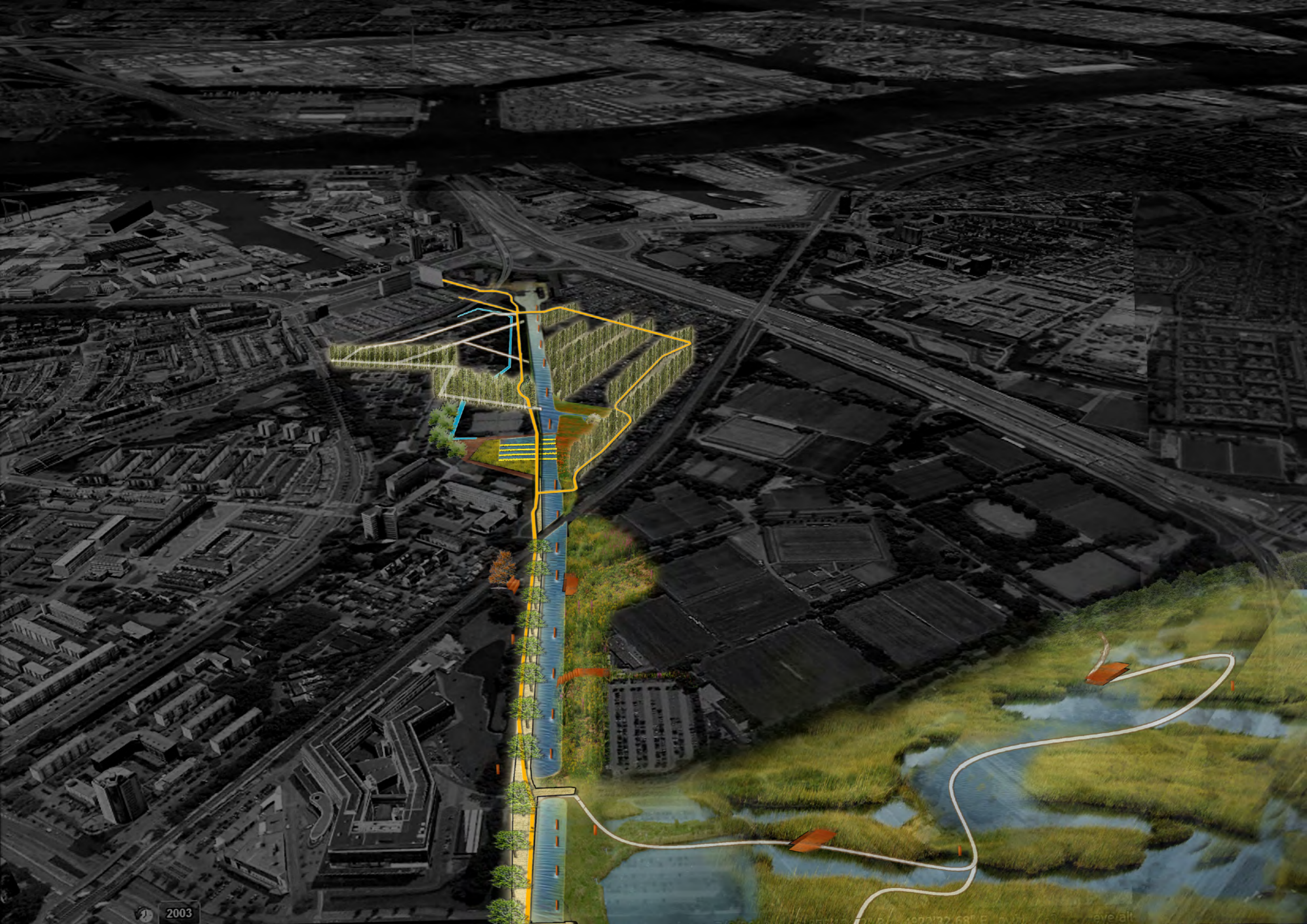
- current situation
- intervention

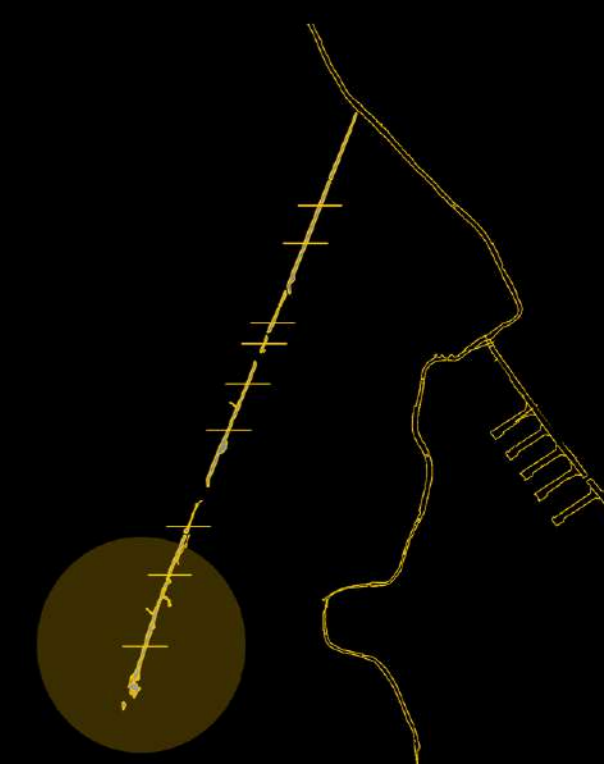
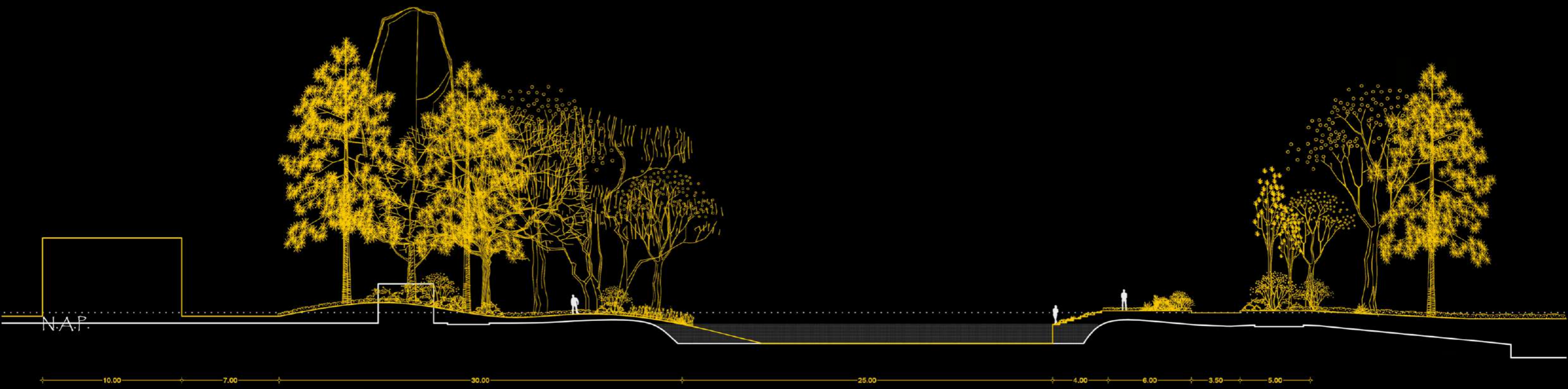


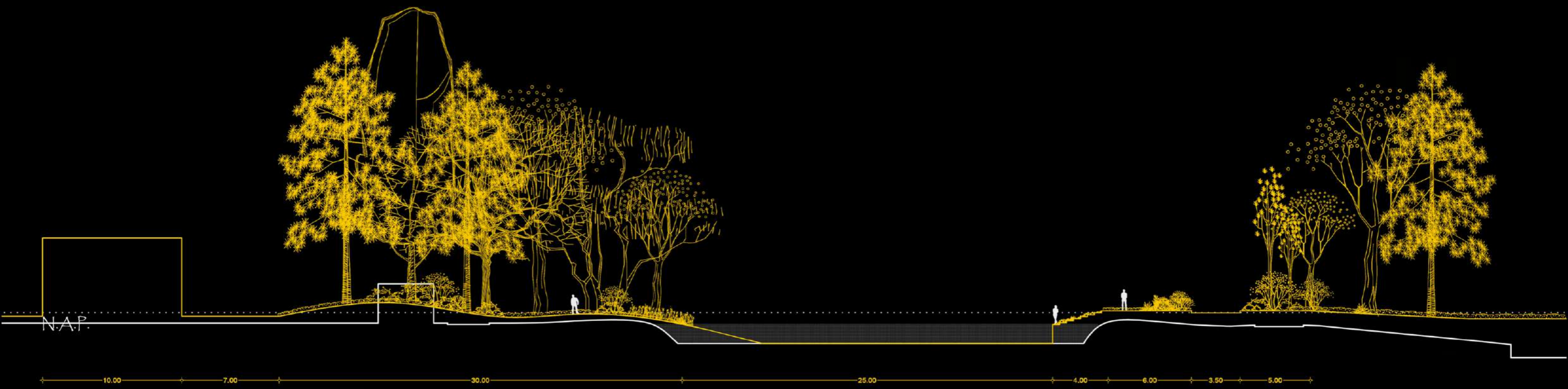


current situation
intervention









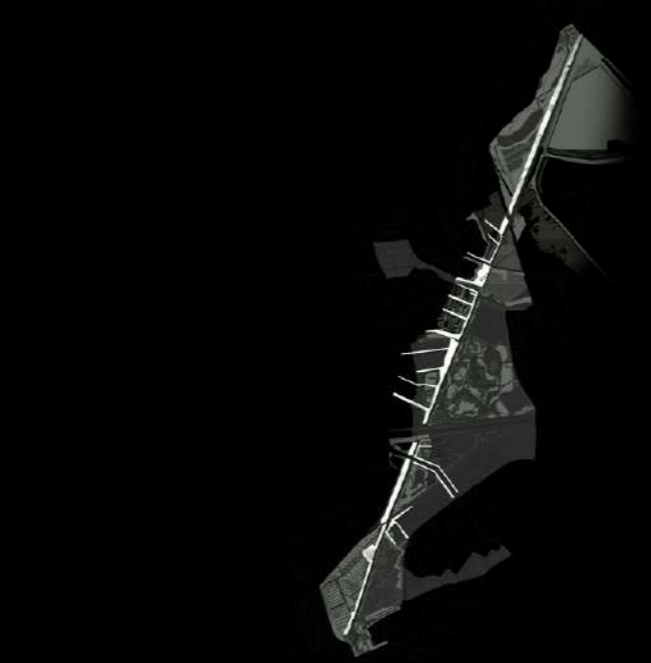
current situation
 intervention



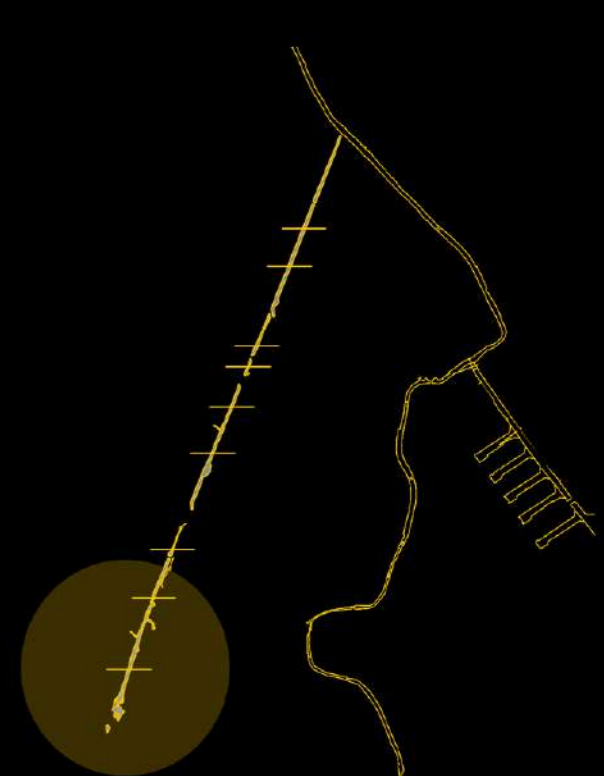
transparent spaces

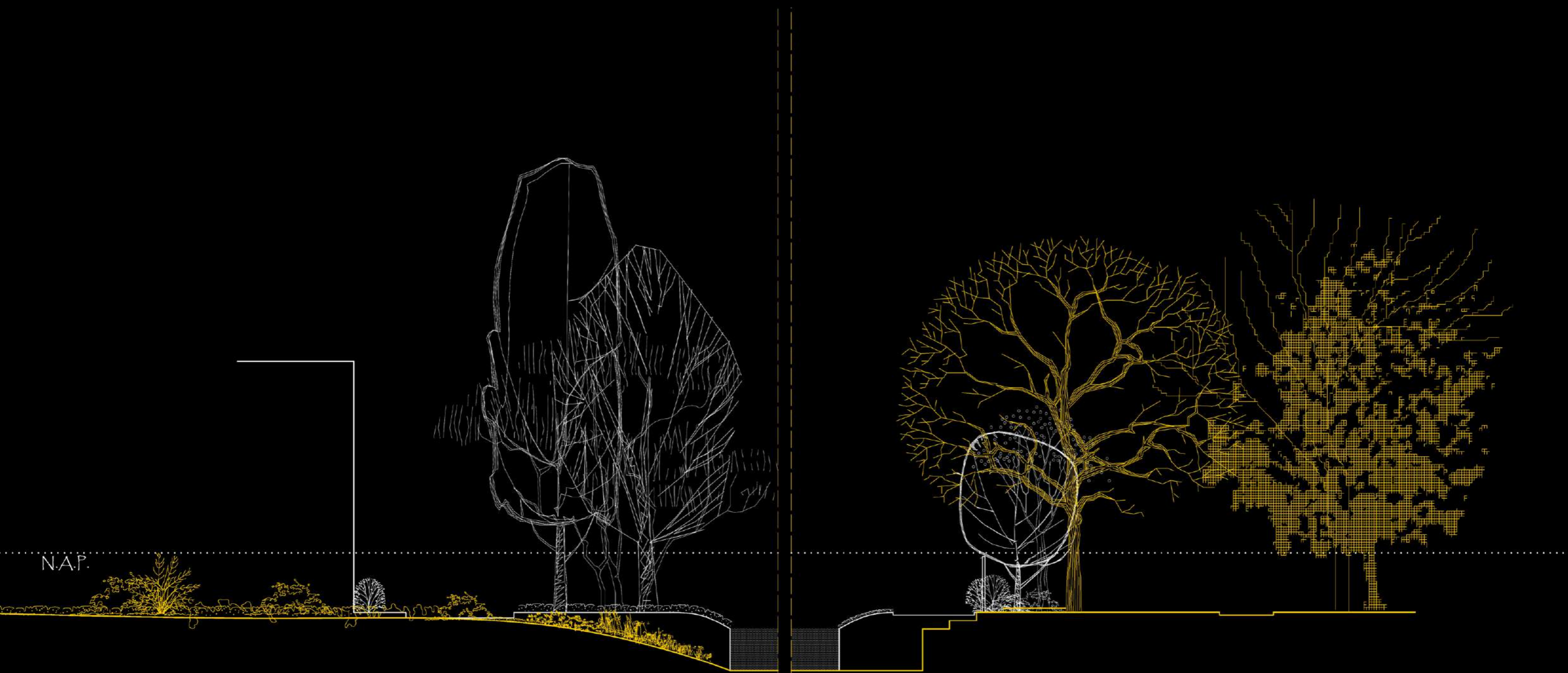


enhance base structure





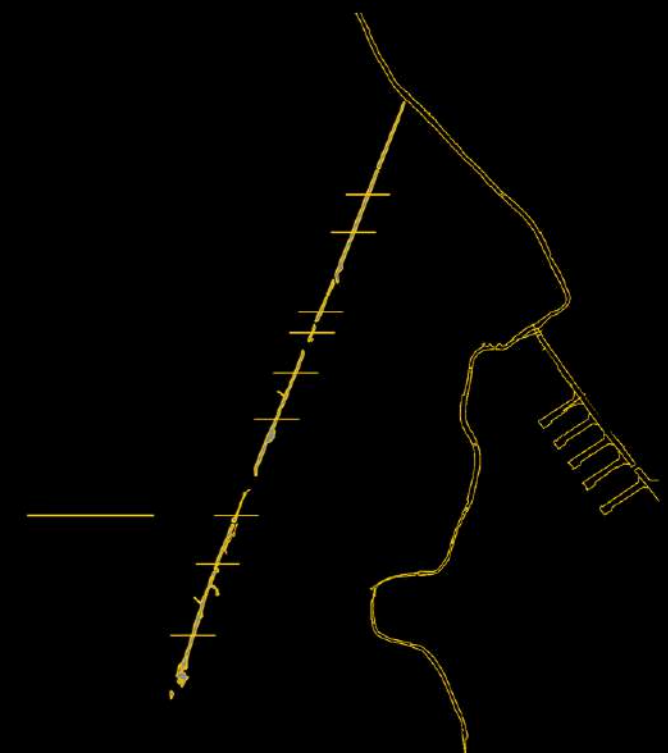
penetration of urban fabric

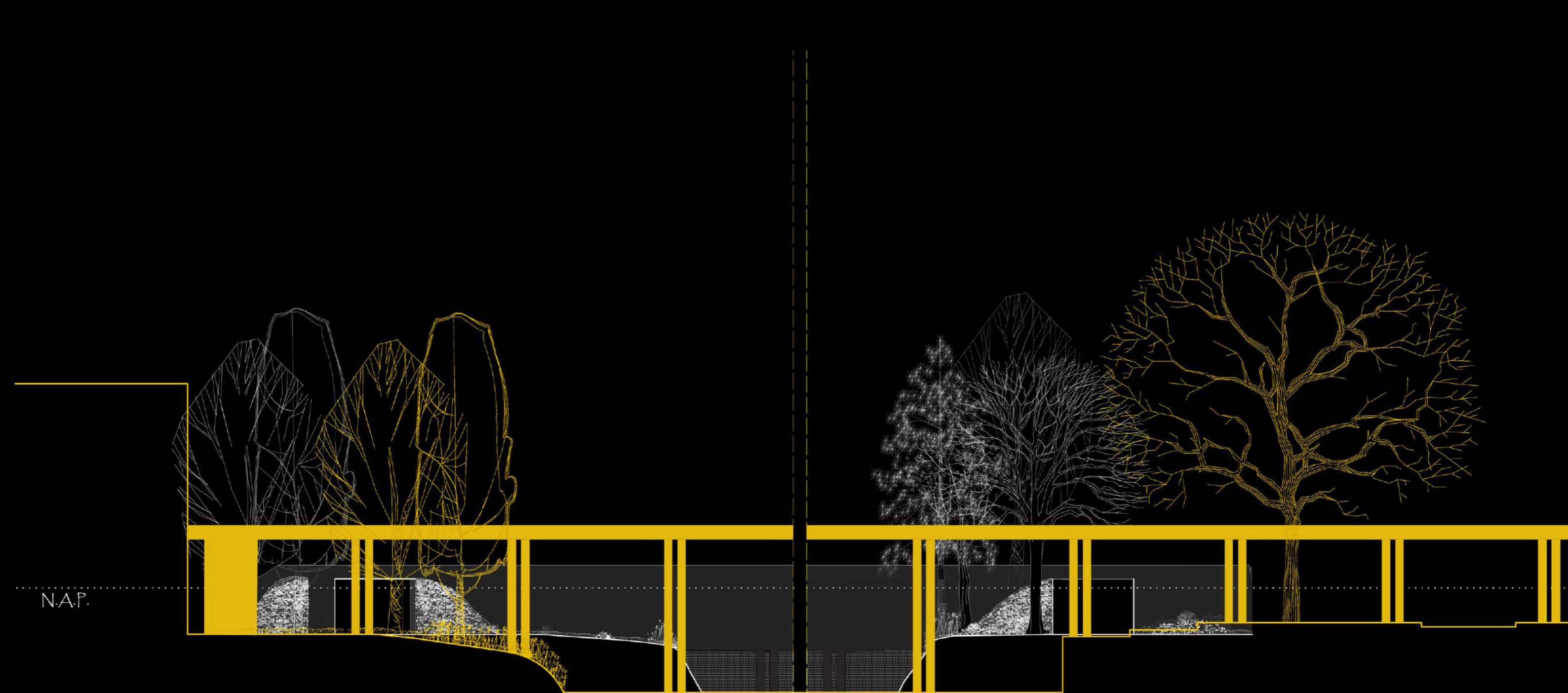






N.A.P.

-  current situation
-  intervention

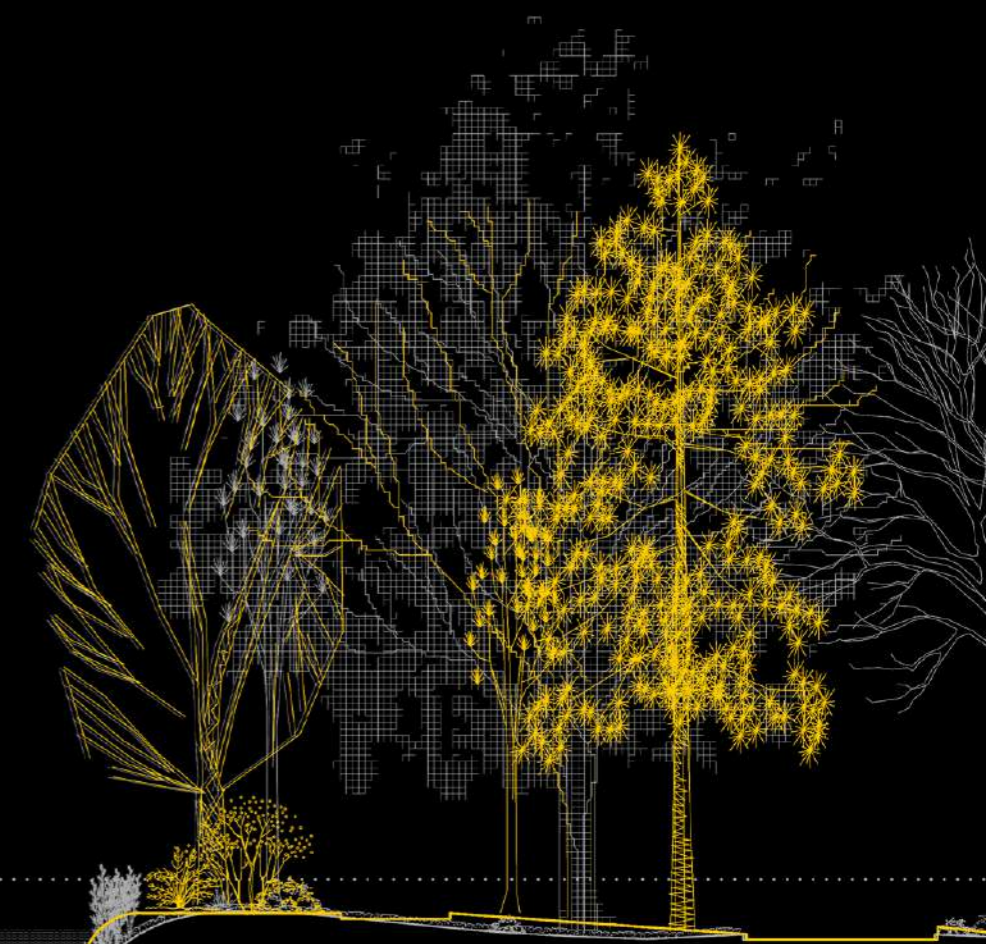
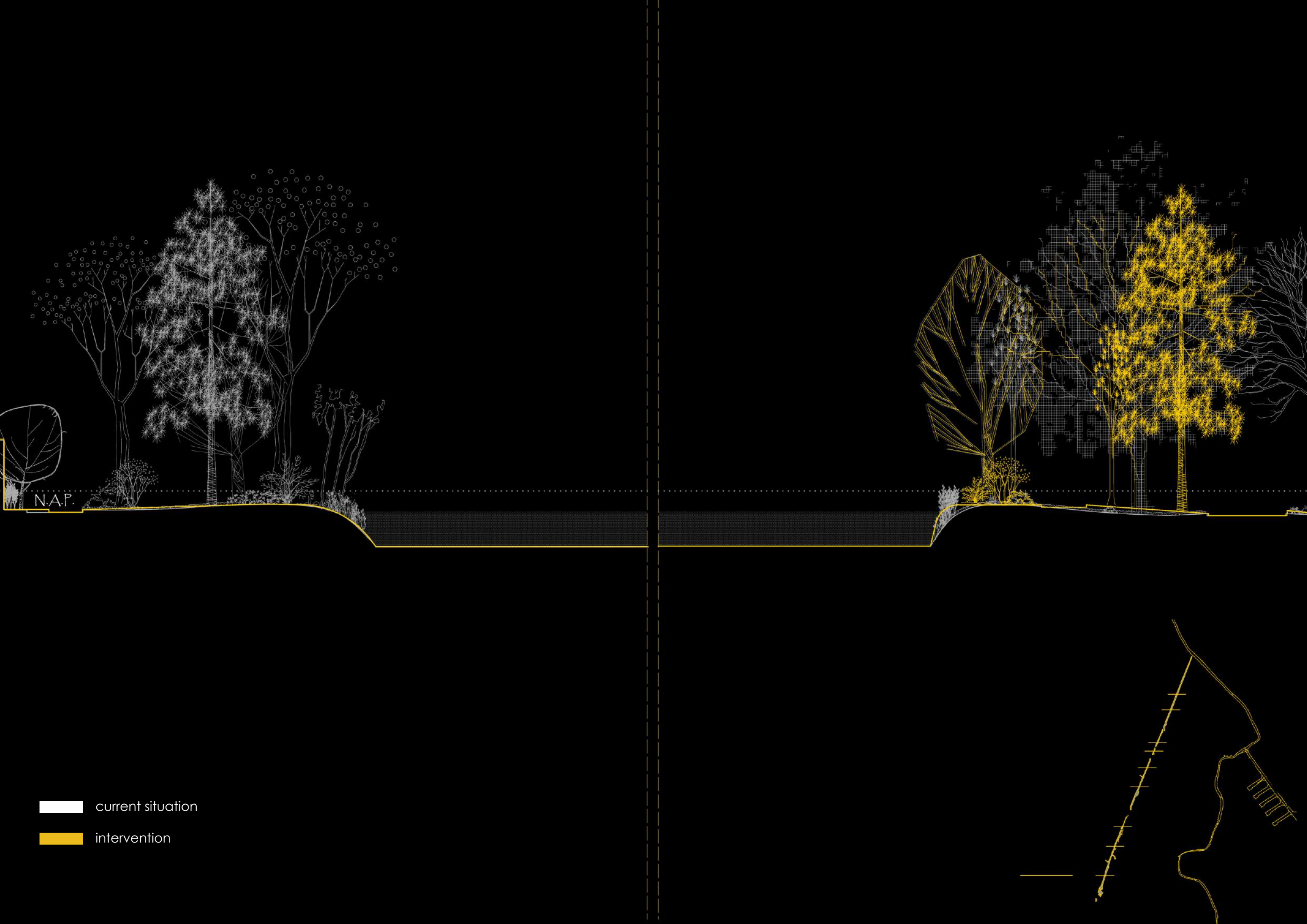






N.A.P.

-  current situation
-  intervention

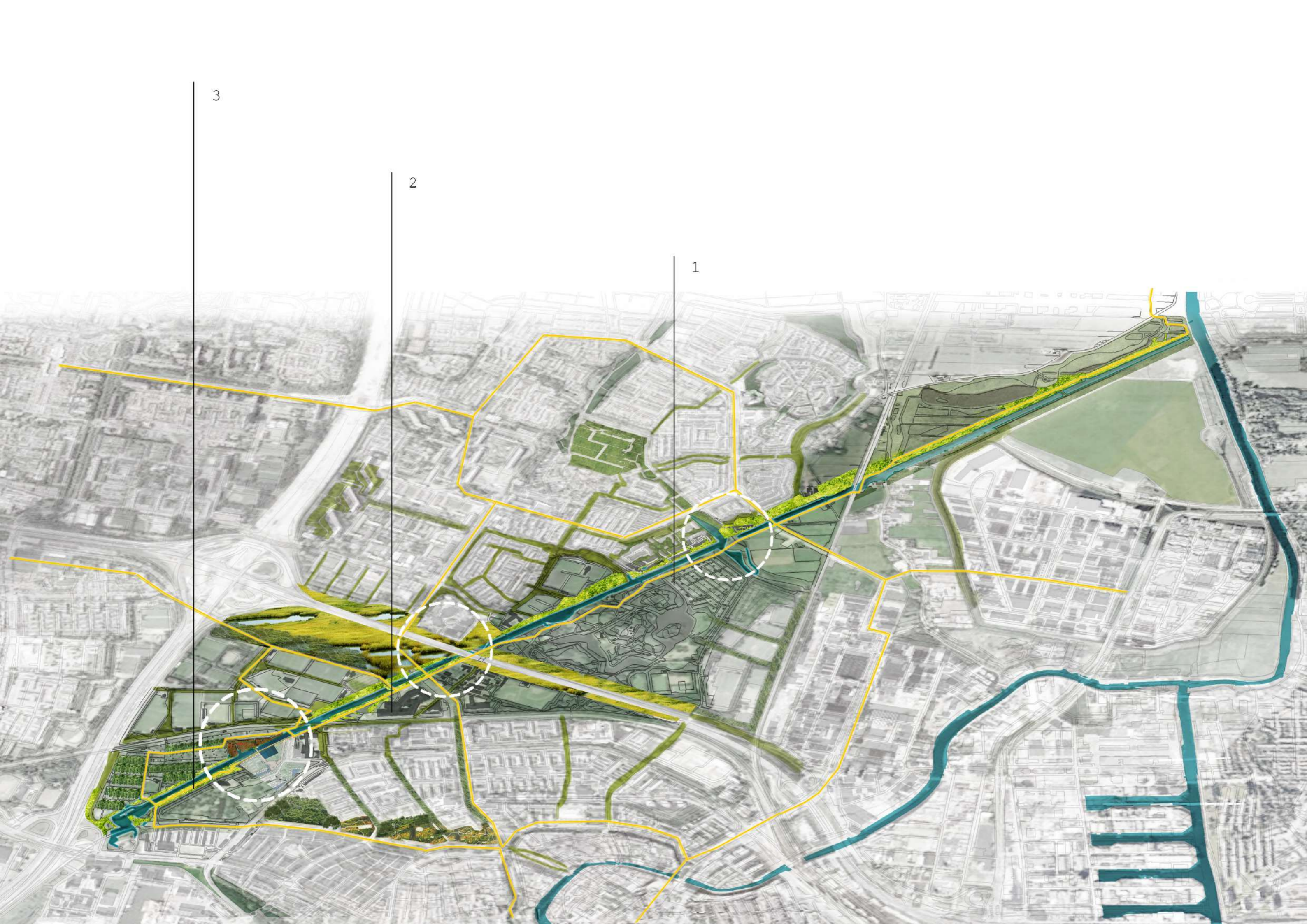




N.A.P.

-  current situation
-  intervention





3

2

1

the embrace
(water square)

the urban
wetland

the balcony





Conclusions

Time-resistant structures [waterways] like Poldervaart can work as connectors in our fragmented urban landscapes.

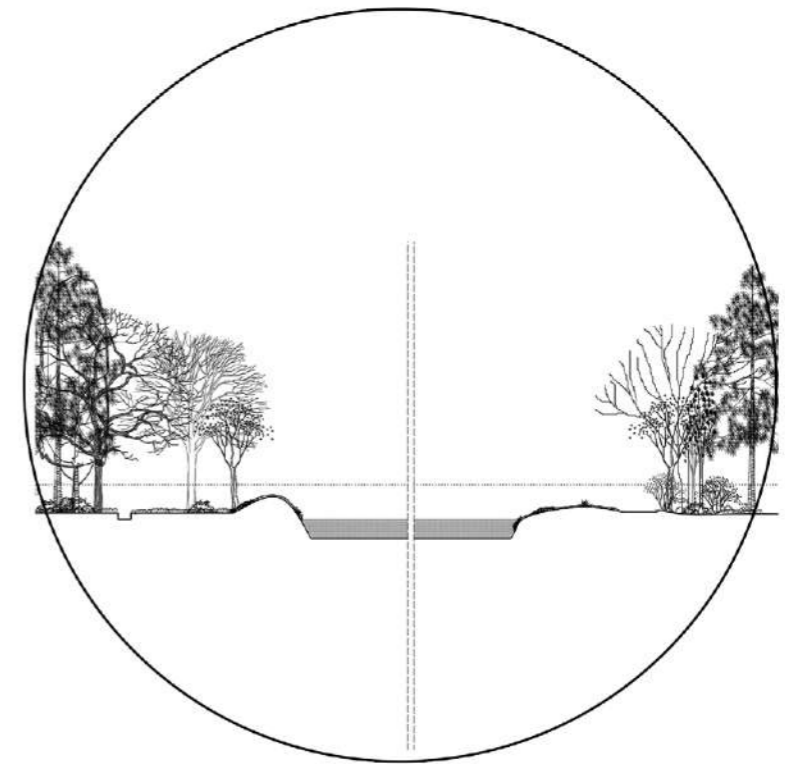
but act on multiple scales



regional



local

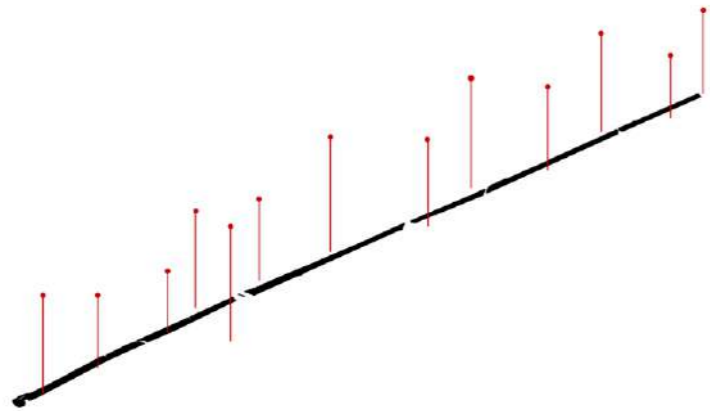


micro

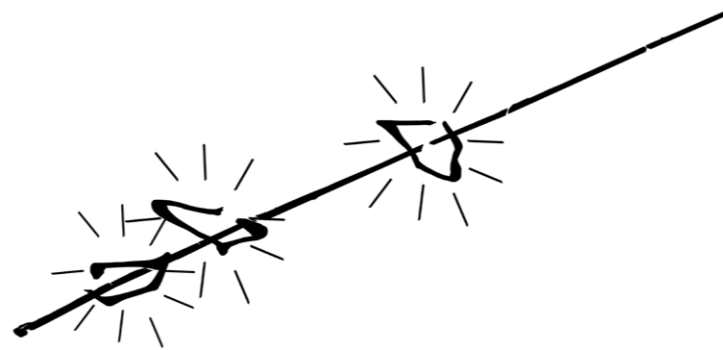
Conclusions

Time-resistant structures [waterways] like Poldervaart can work as connectors in our fragmented urban landscapes.

but act in multiple scales



small scale interventions
revealing the landscape



interventions-nods in key areas
vibrant public spaces or entrances



strategy
network of time-resistant structures



Thank you!