



DRAWINGS

MASTER GRADUATION PROJECT

Delft University of Technology
Faculty of Architecture and the Built Environment
Veldacademie

TUTORS

Ir. J.A. Vink
Ir. J.D. Fokkinga
Prof. dr. ir. M.J. van Dorst

5TH OF OCTOBER, 2022

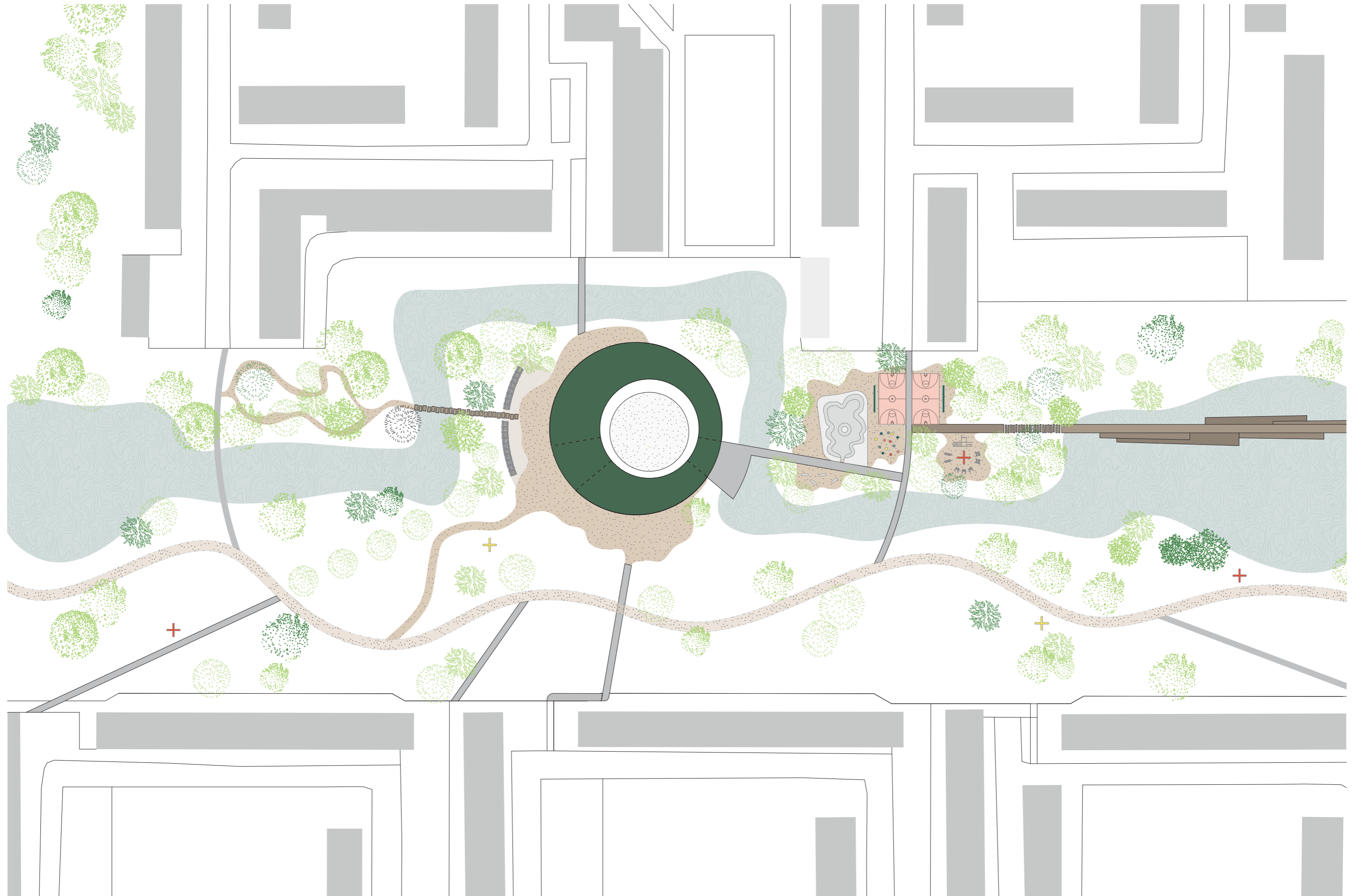
DIORAMA

DRAWINGS

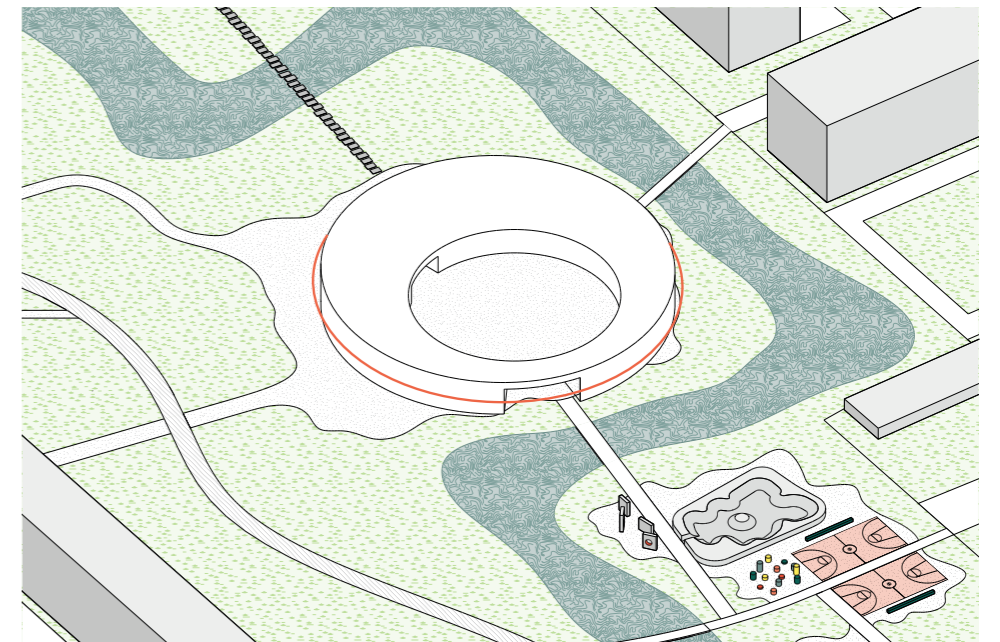
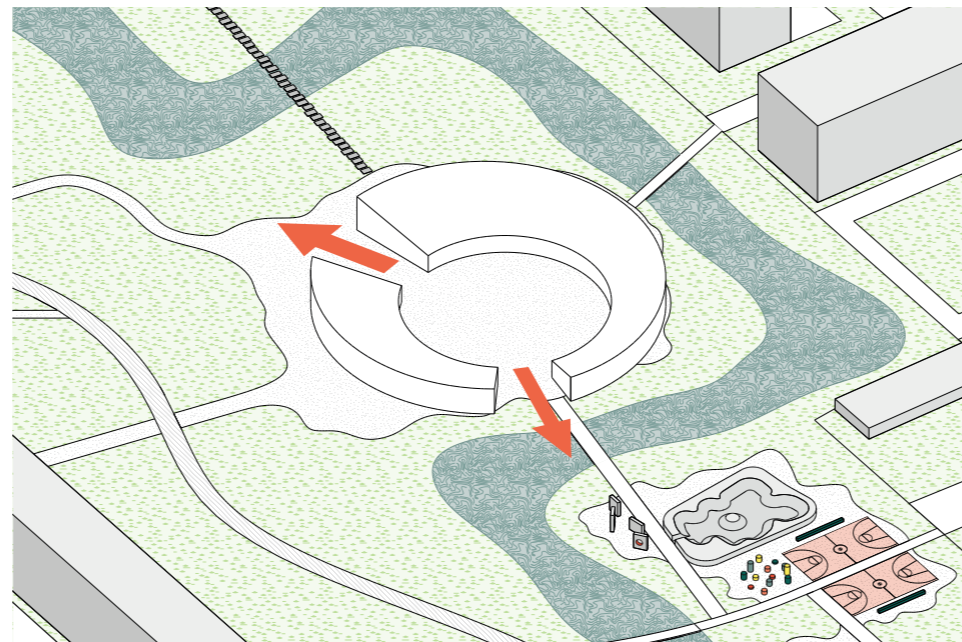
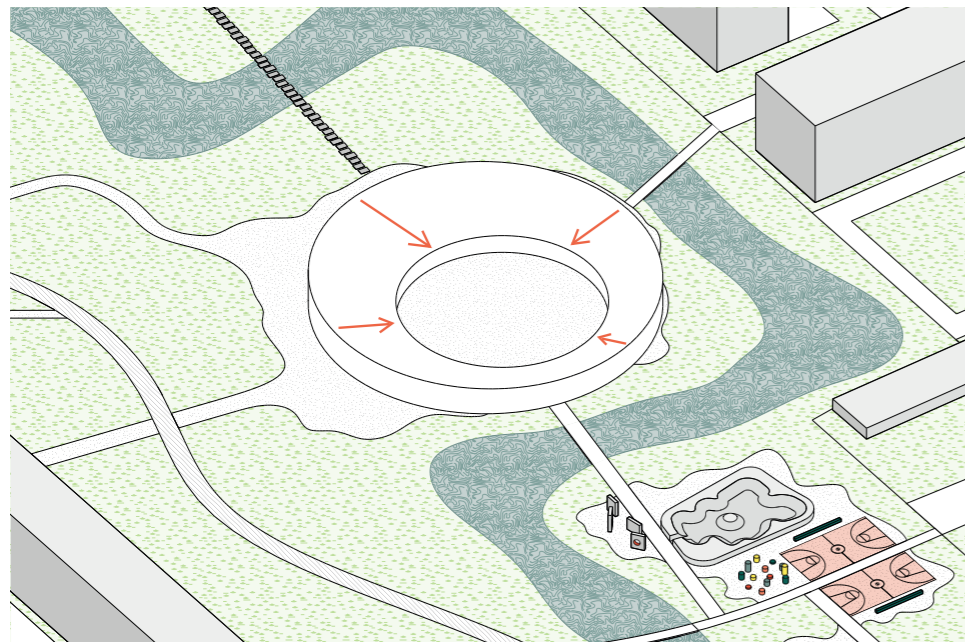
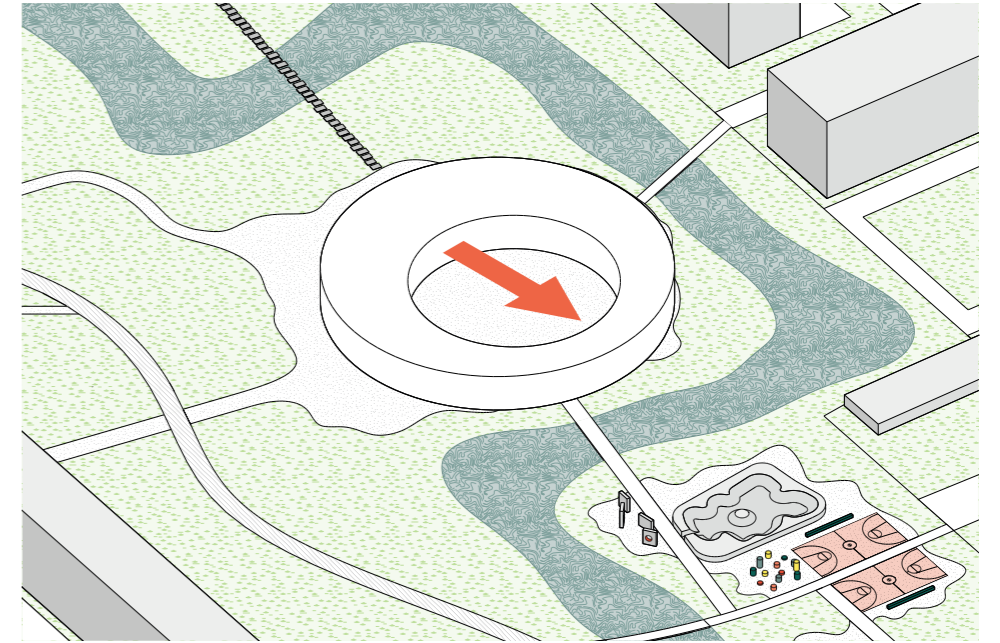
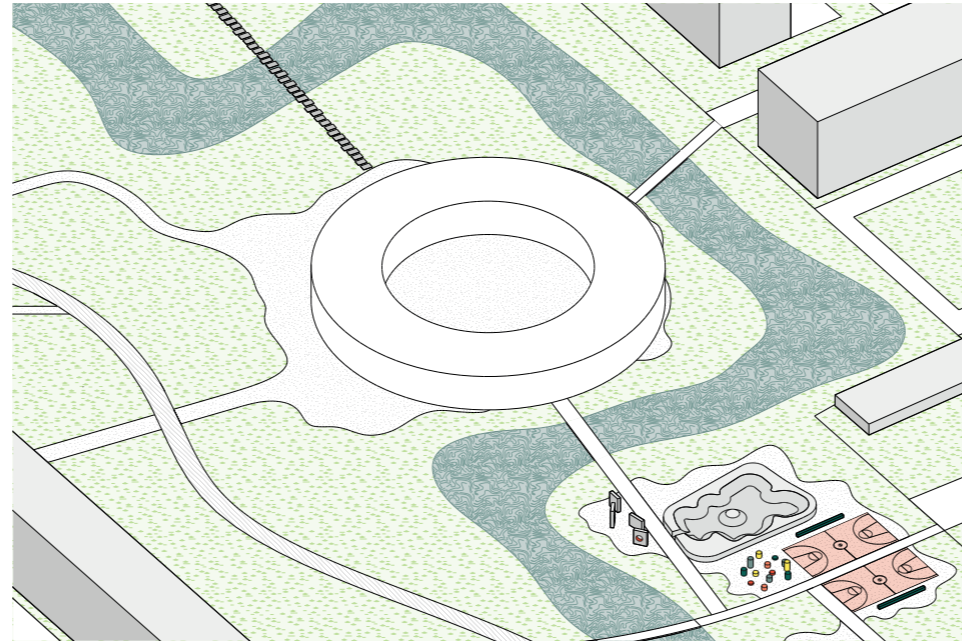
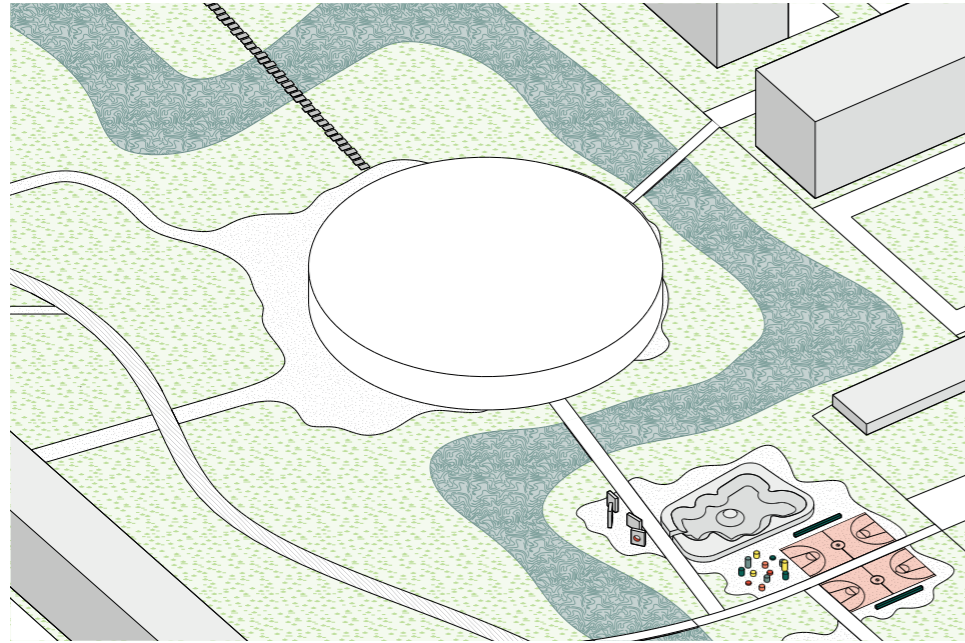
Context



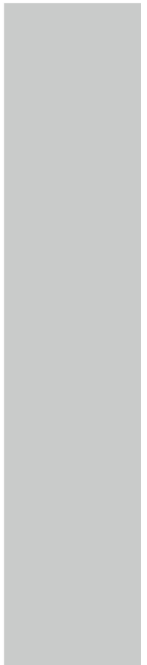
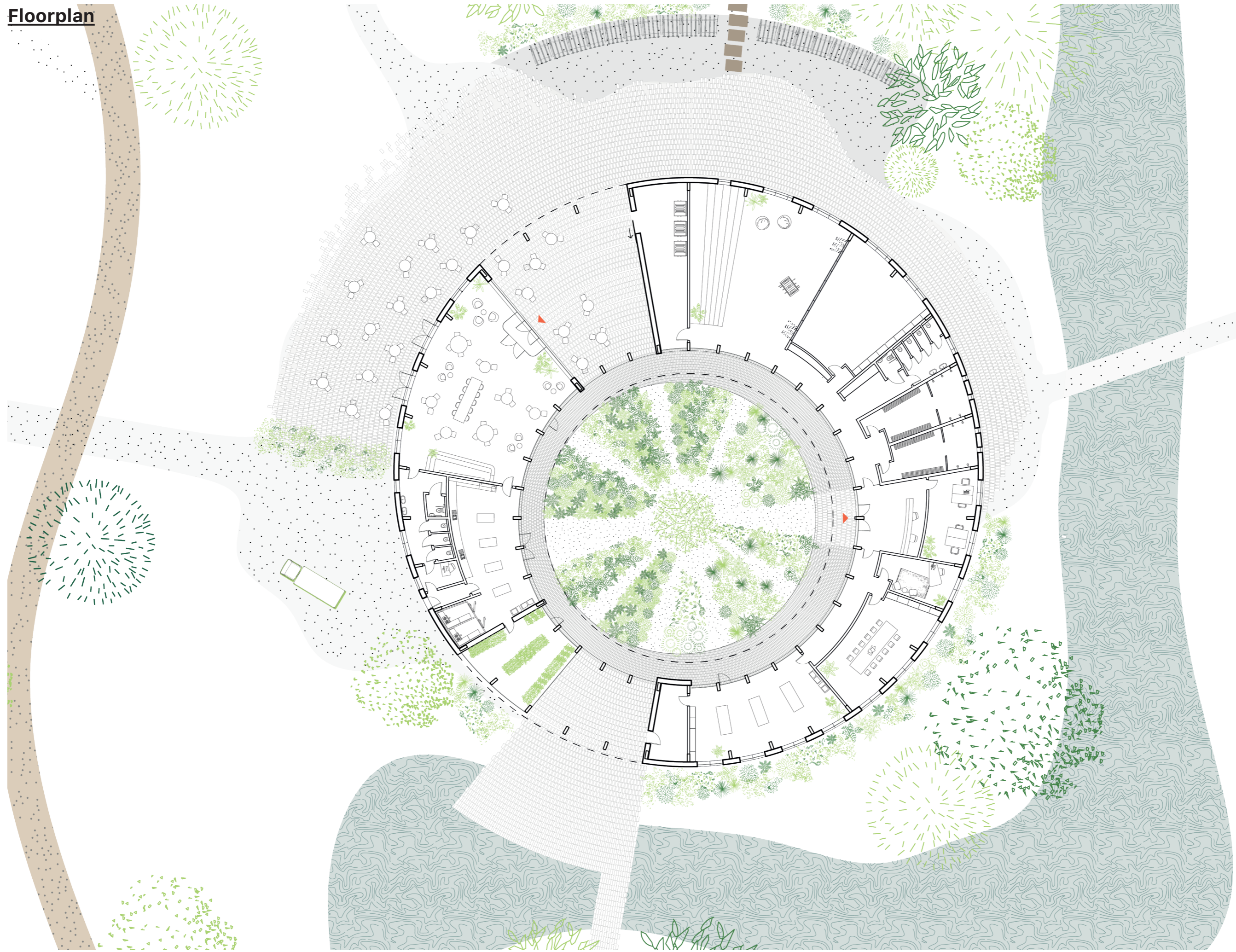
Masterplan



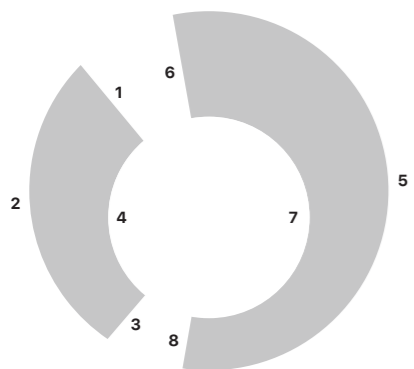
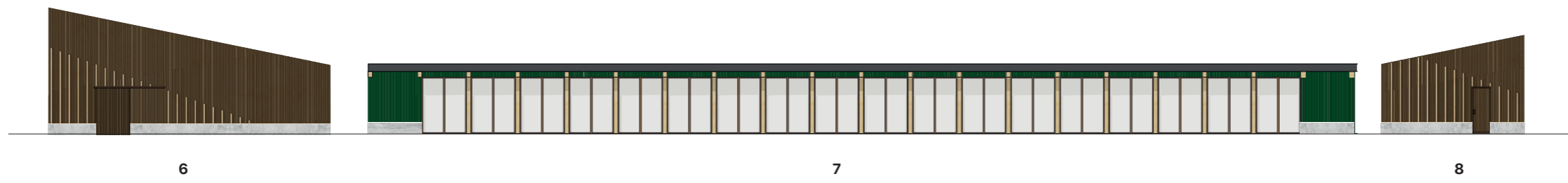
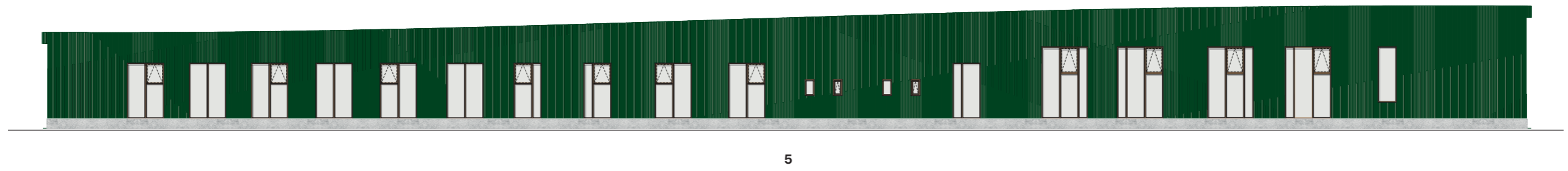
Concept diagrams



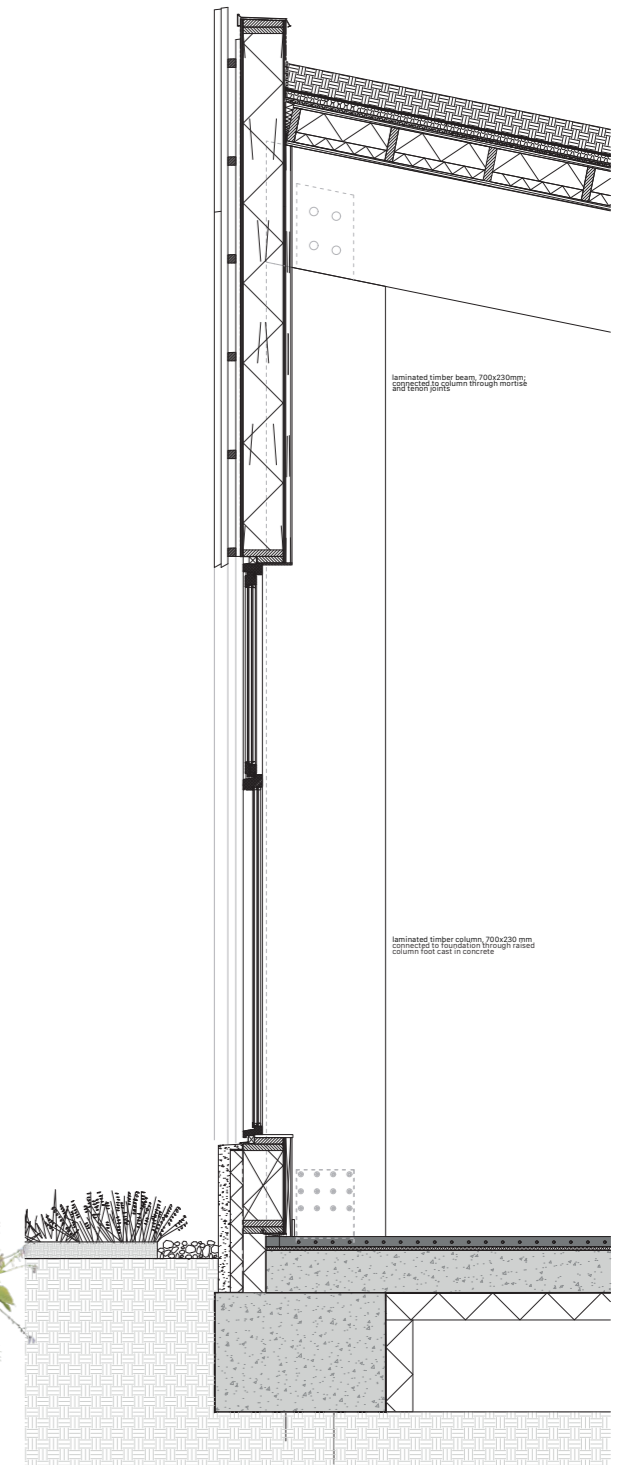
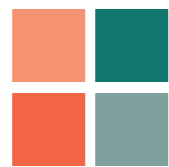
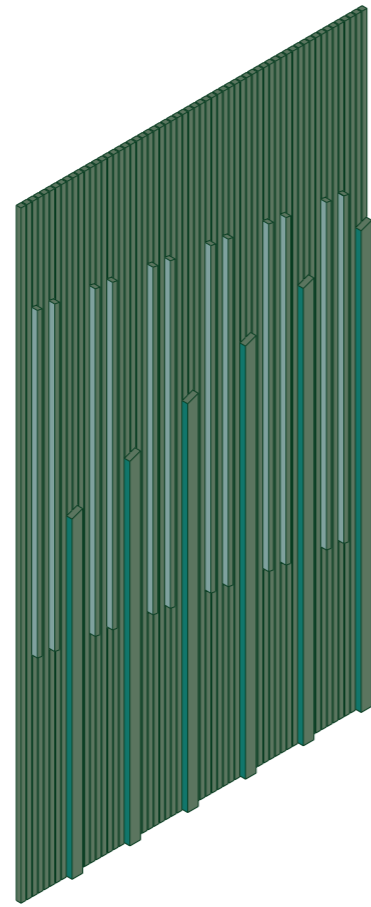
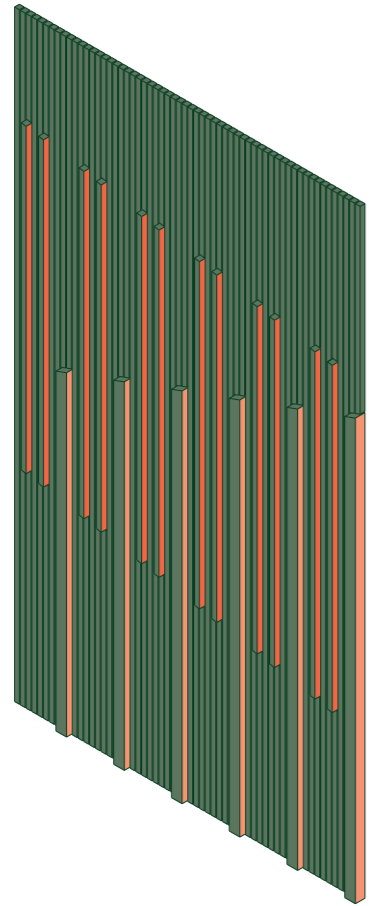
Floorplan



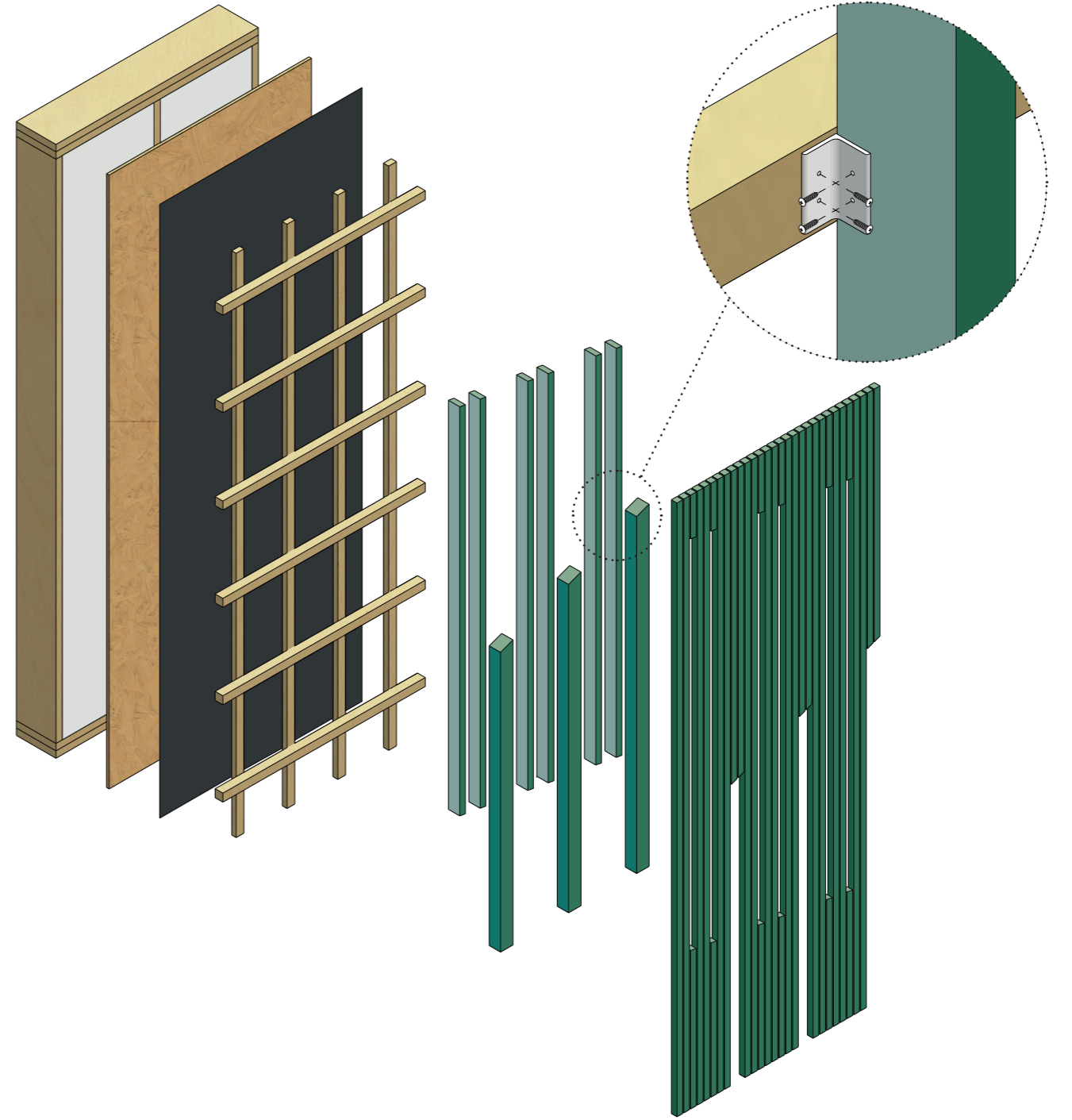
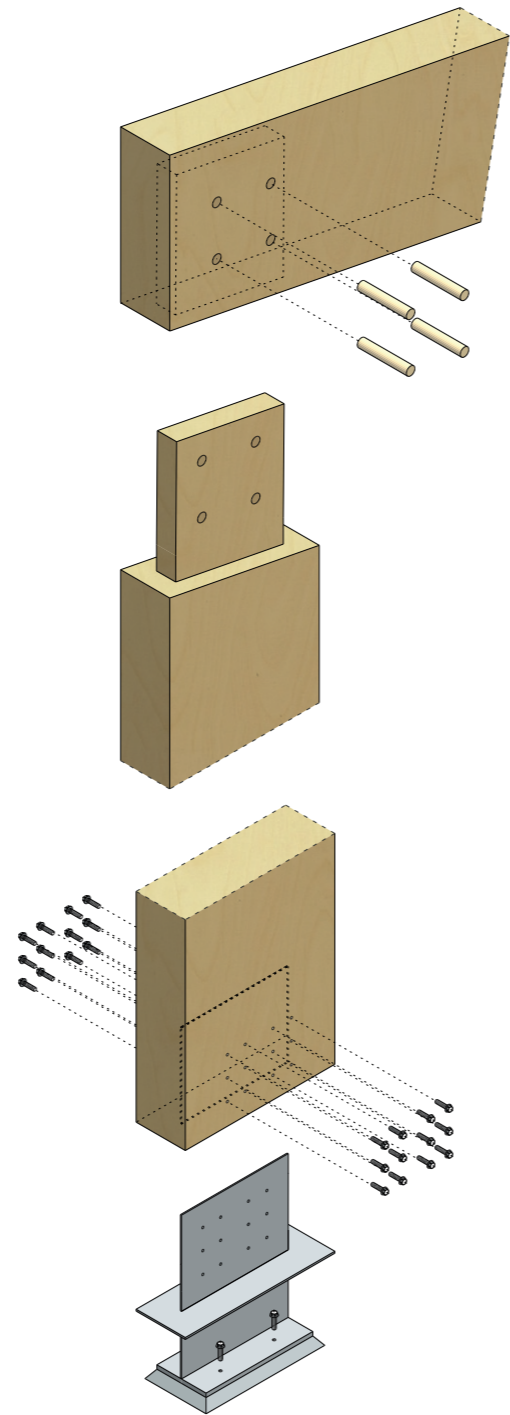
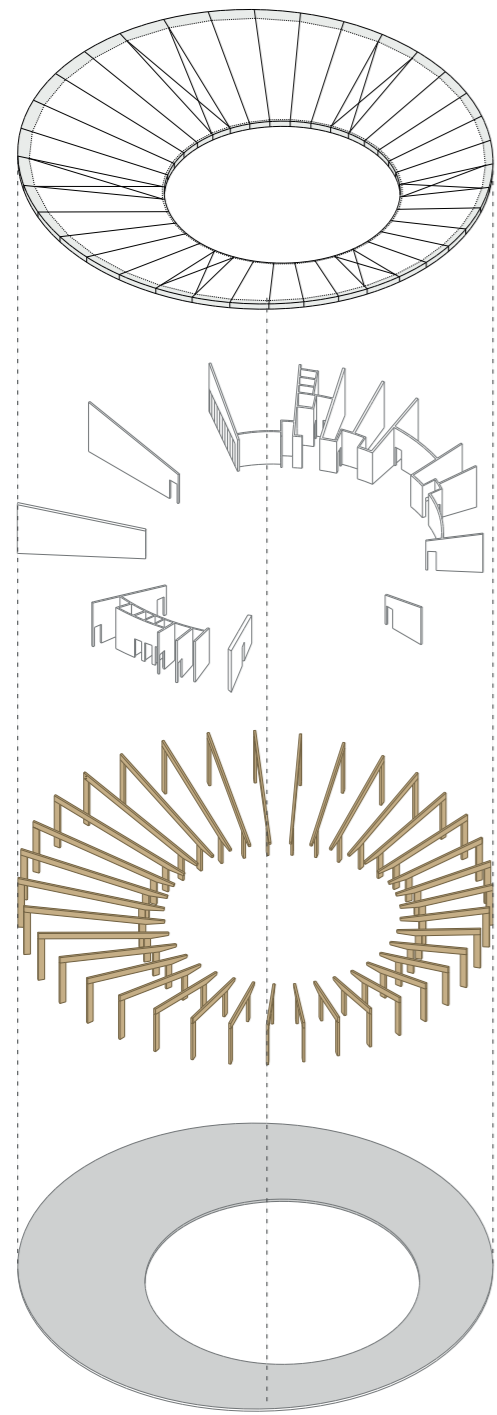
Facades



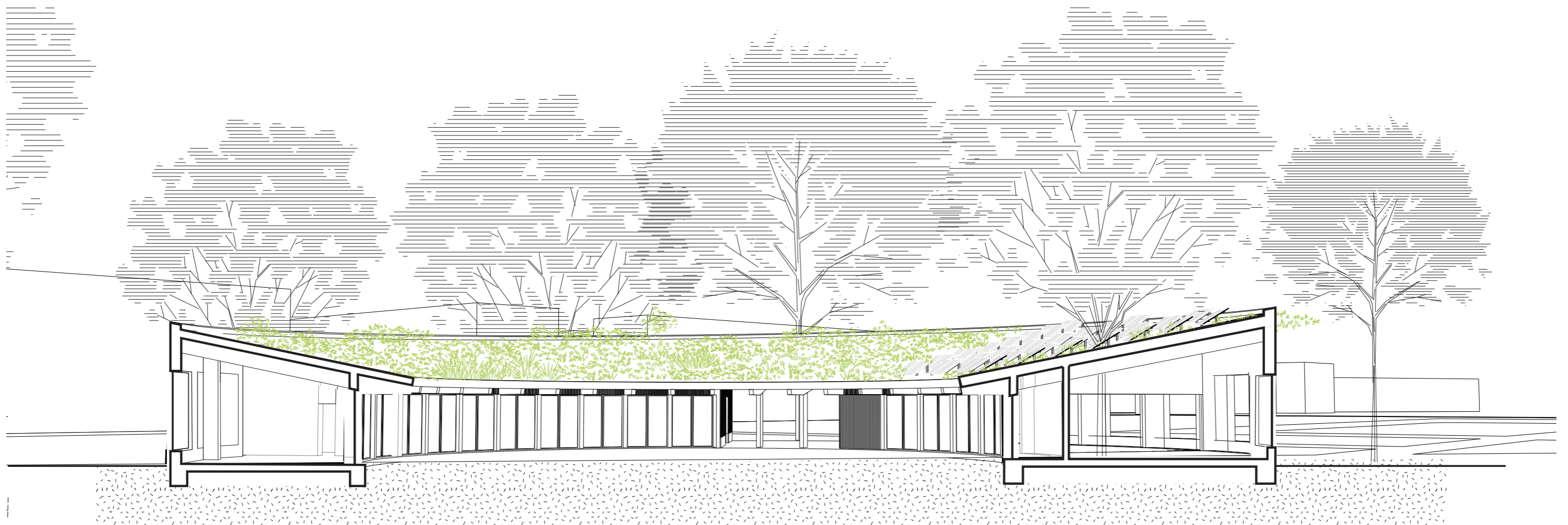
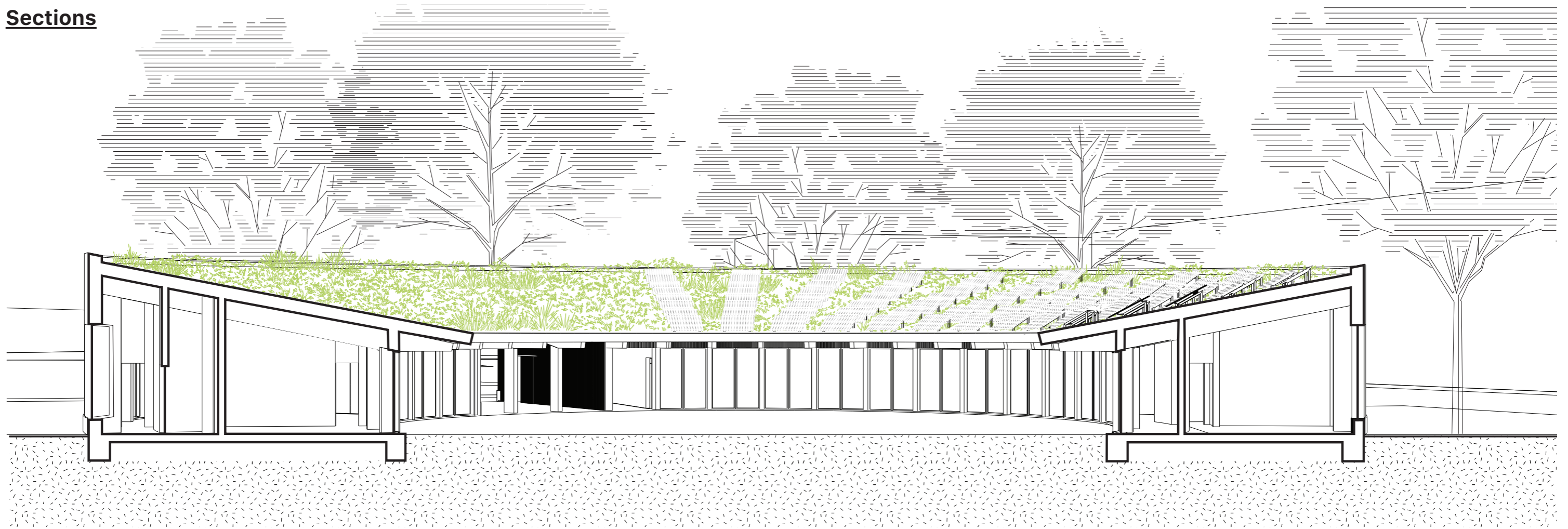
Facade fragment

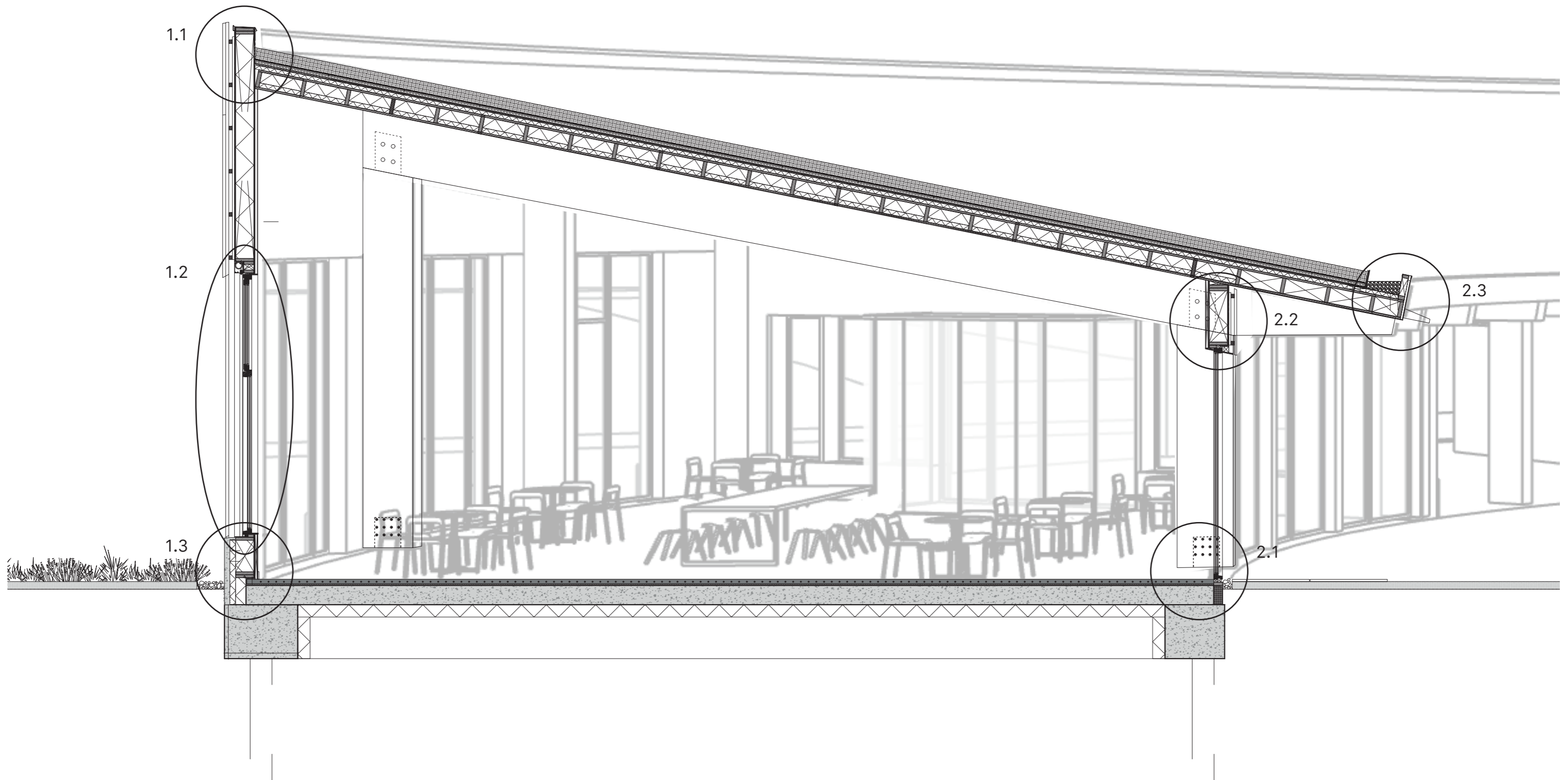


Elements



Sections





Detail 1.1

roof (t.t.b.)

150mm extensive substrate

filter layer

drainage layer

absorption layer

root barrier

bitumen waterproofing layer

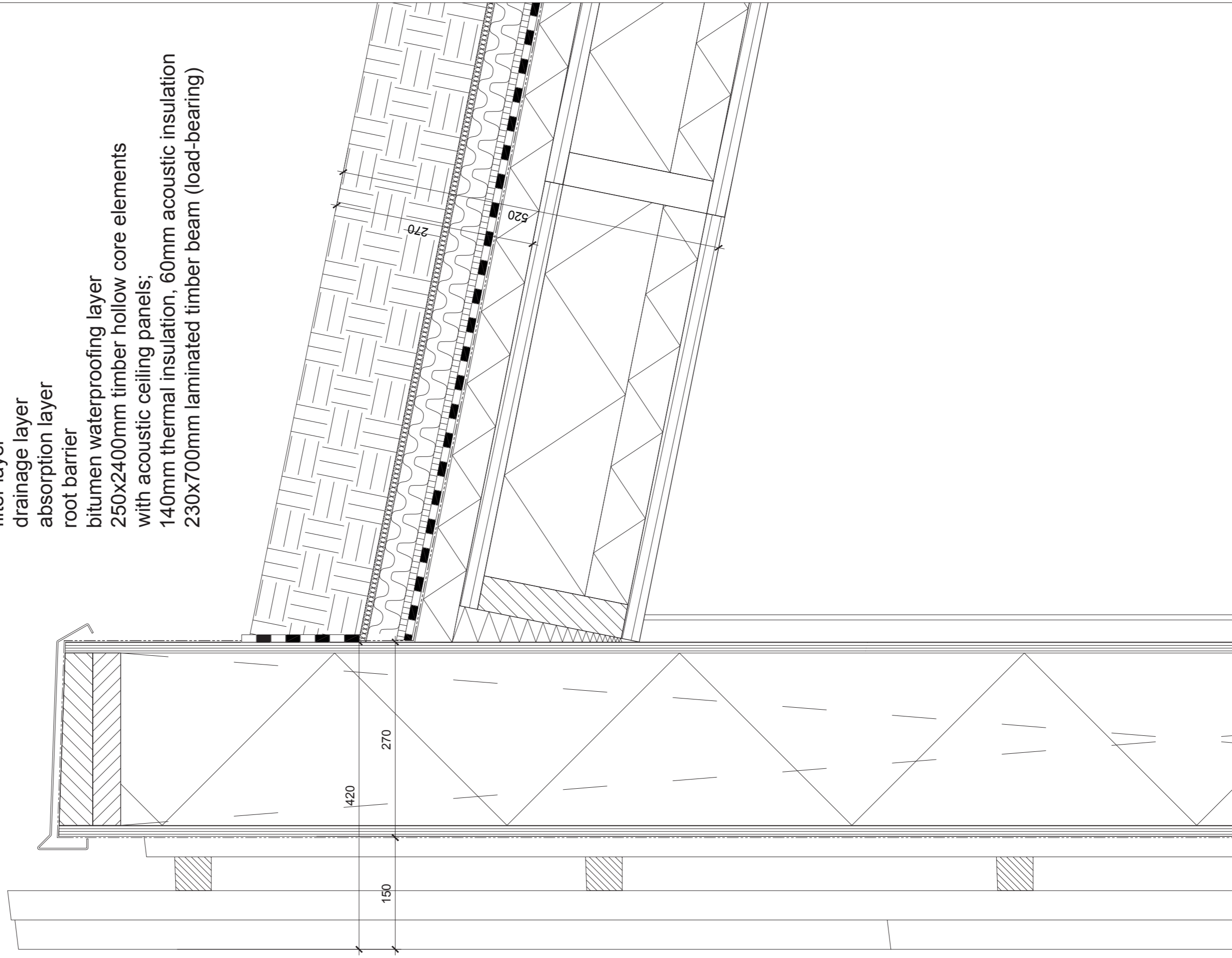
250x2400mm timber hollow core elements

with acoustic ceiling panels;

140mm thermal insulation, 60mm acoustic insulation

230x700mm laminated timber beam (load-bearing)

zinc parapet

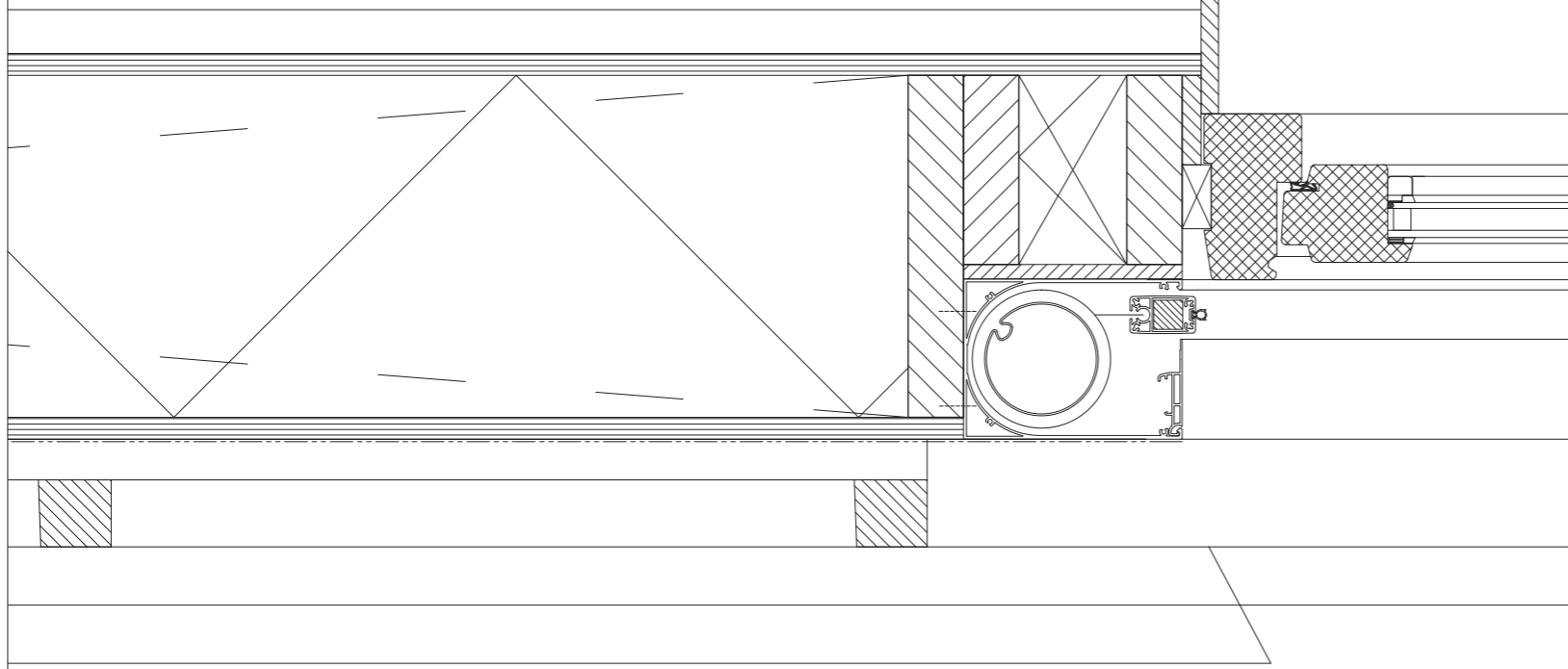


Detail 1.2

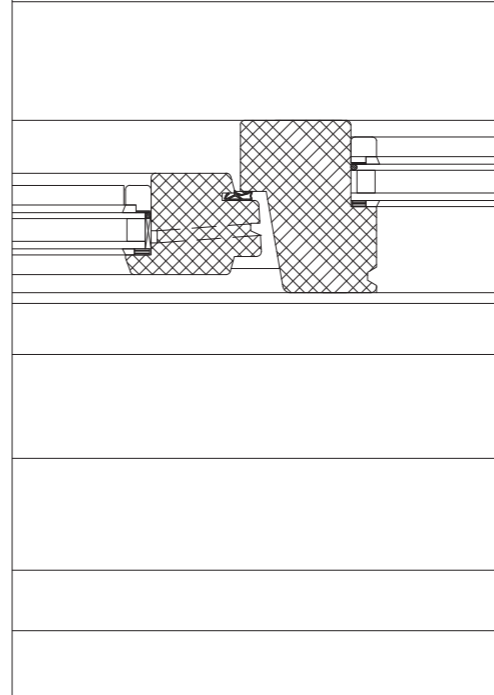
envelope (l.t.r)

timber cladding 40x40mm;40x80mm;88x80mm
46mm horizontal timber battens
28mm vertical battens
vapour-open water barrier
15mm wood fiber board
235mm timber frame structure with cellulose insulation
15mm wood fiber board
30mm installation wall with vertical timber battens
7mm triplex finishing

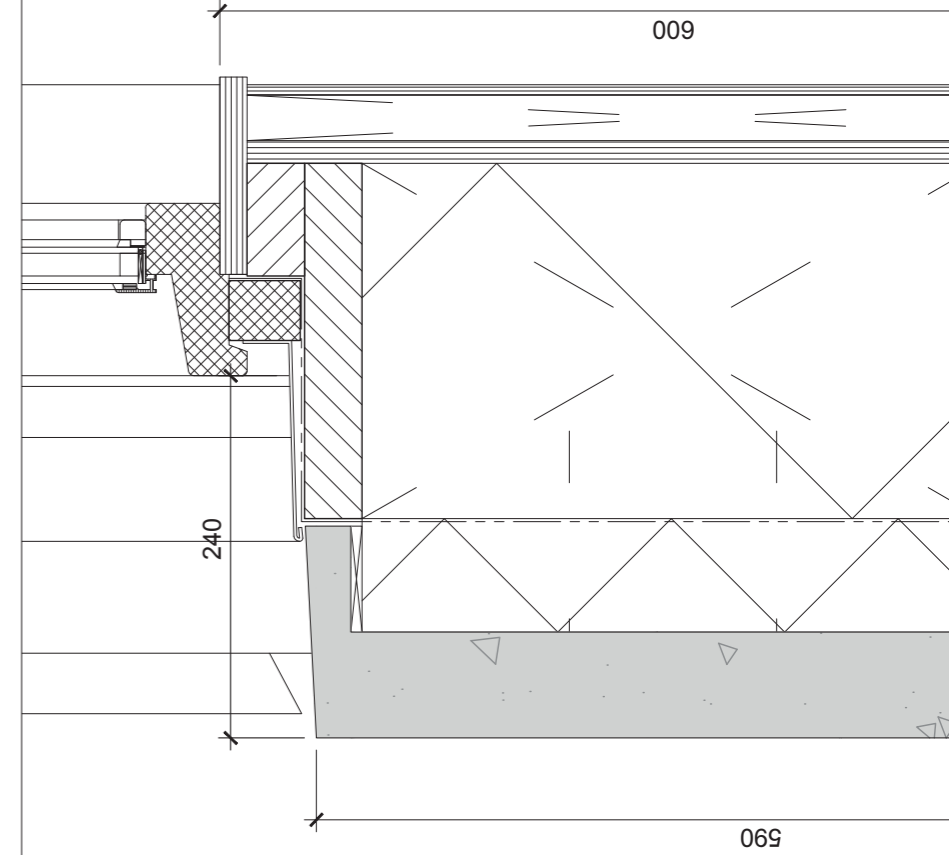
integrated blinds, DUCO



double glazed window;
part fixed, part tilted



envelope (l.t.r.)
prefab concrete element
75mm XPS insulation
vapour permeable water barrier
235mm timber frame structure with cellulose insulation
15mm wood fiber board
30mm installation wall with vertical timber battens
7mm triplex finishing



590

Detail 1.3

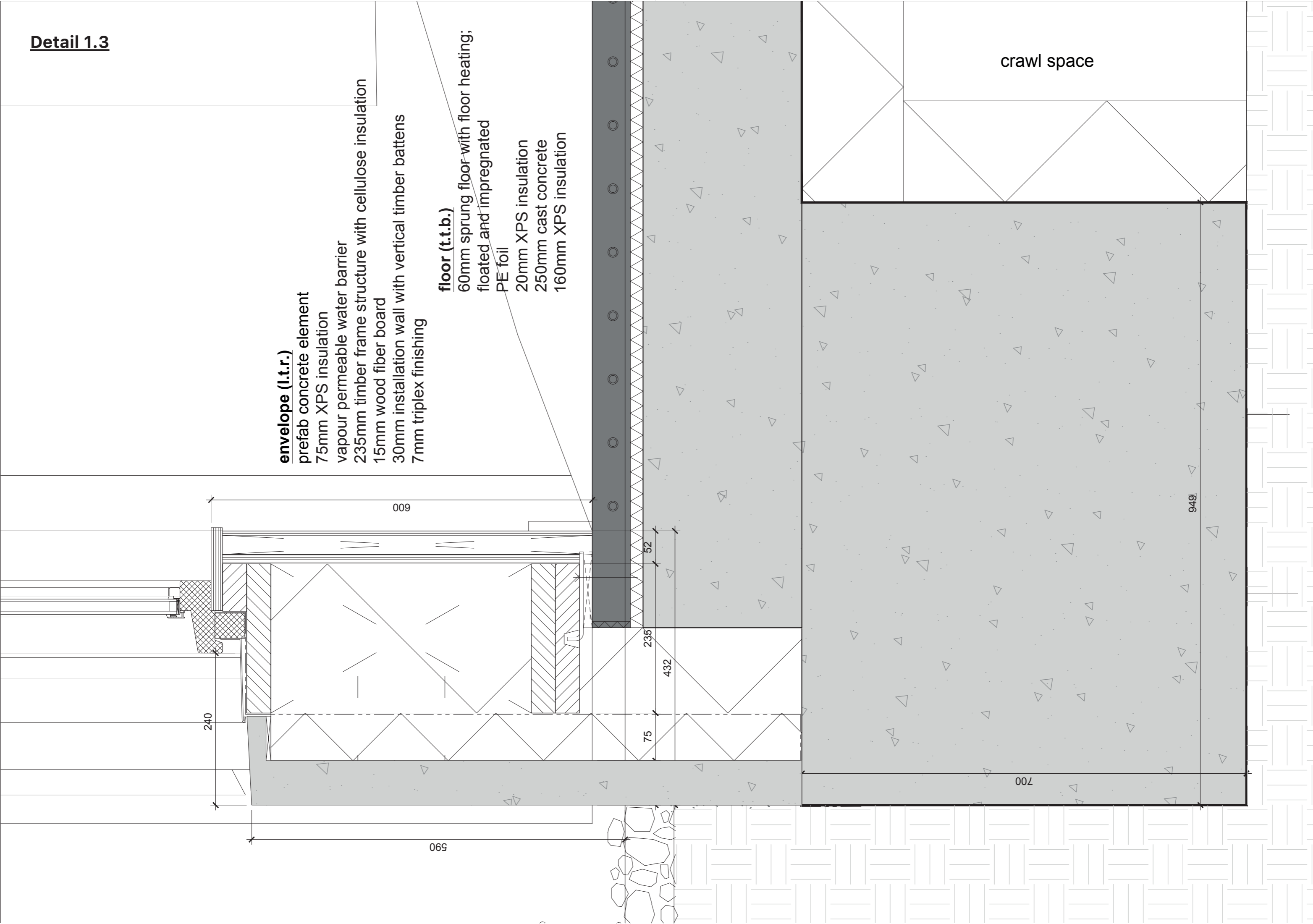
envelope (l.t.r.)

- prefab concrete element
- 75mm XPS insulation
- vapour permeable water barrier
- 235mm timber frame structure with cellulose insulation
- 15mm wood fiber board
- 30mm installation wall with vertical timber battens
- 7mm triplex finishing

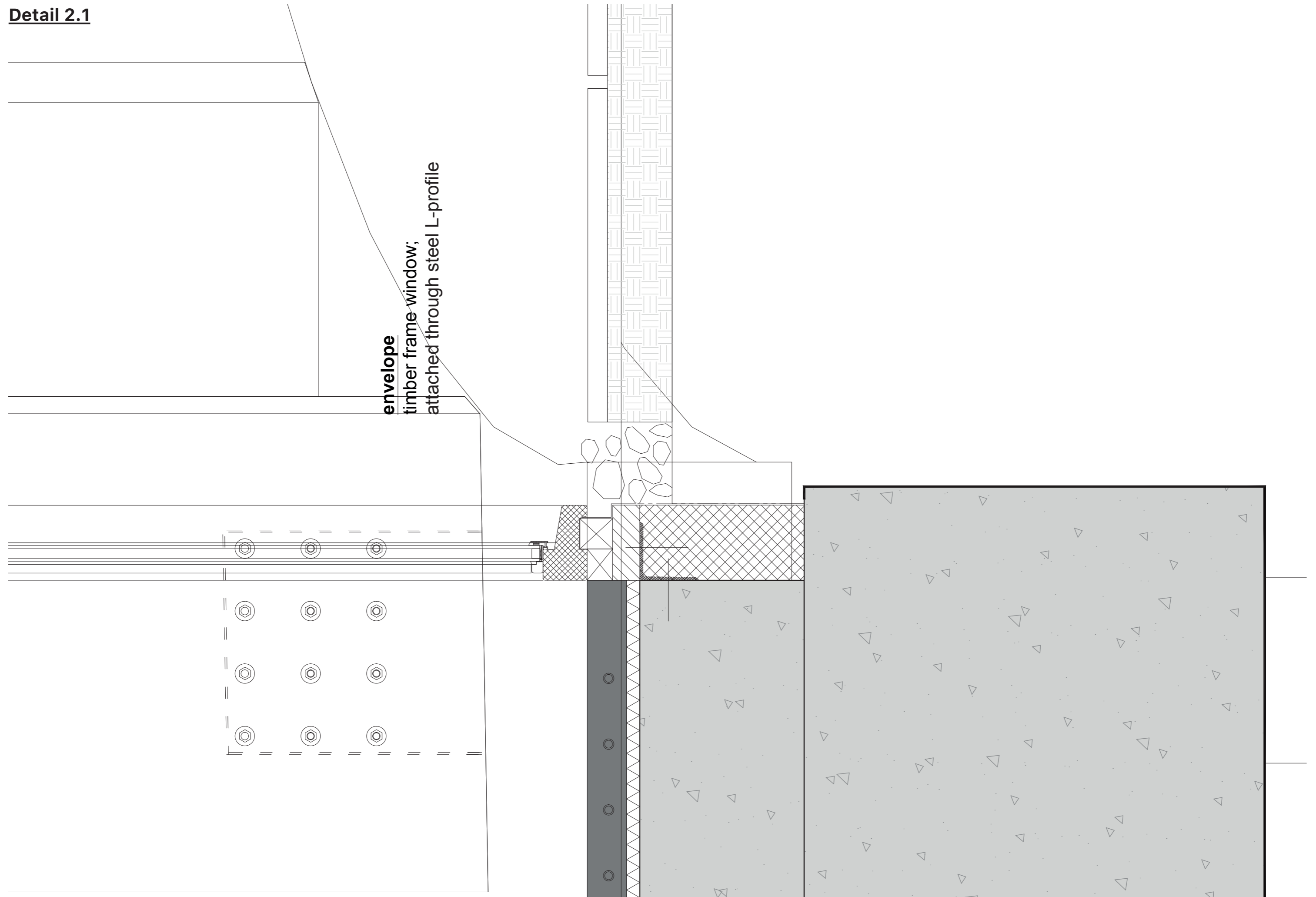
floor (t.t.b.)

- 60mm sprung floor with floor heating; floated and impregnated
- PE foil
- 20mm XPS insulation
- 250mm cast concrete
- 160mm XPS insulation

crawl space

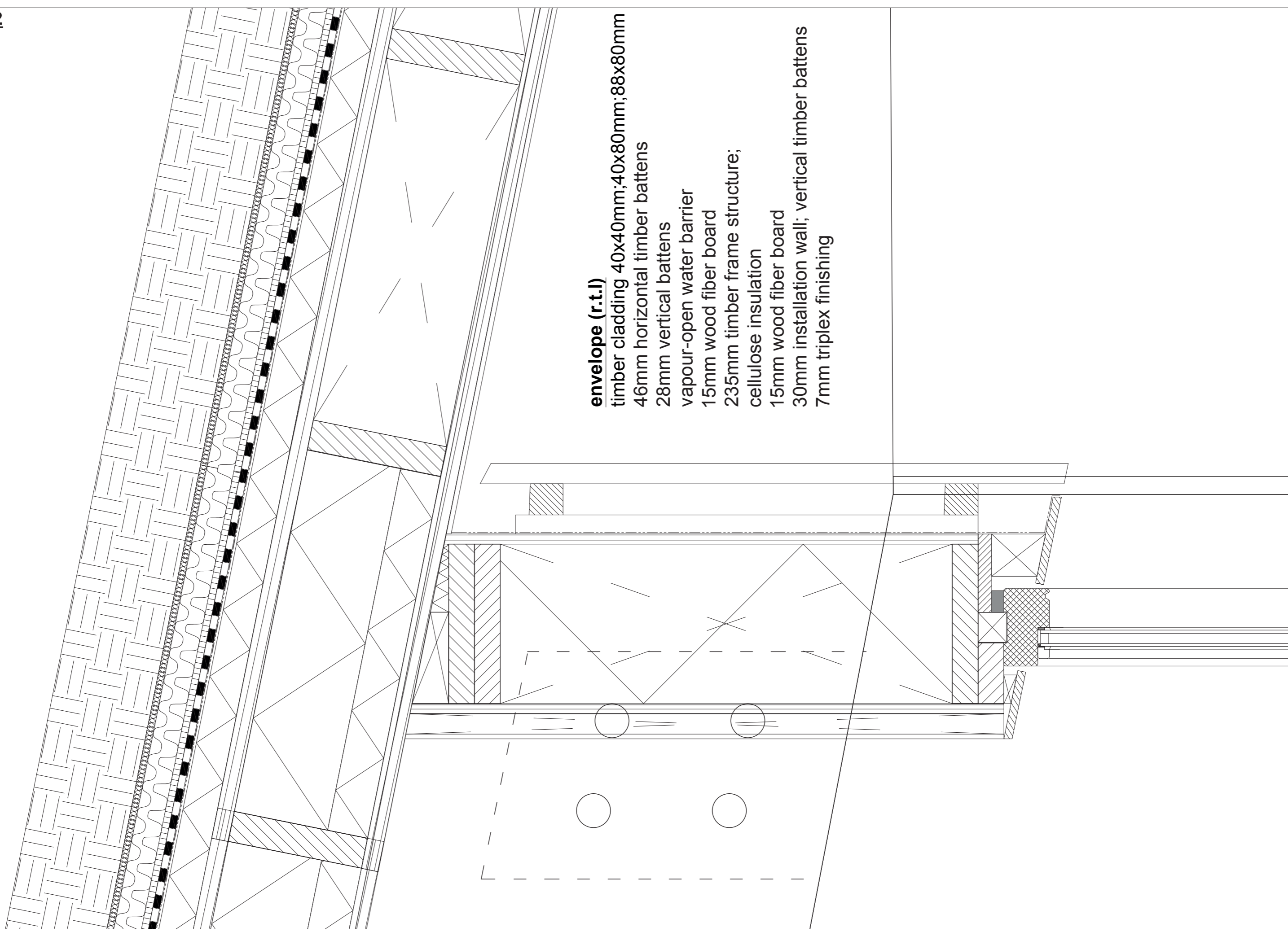


Detail 2.1



envelope
timber frame window;
attached through steel L-profile

Detail 2.2



envelope (r.t.l)

- timber cladding 40x40mm; 40x80mm; 88x80mm
- 46mm horizontal timber battens
- 28mm vertical battens
- vapour-open water barrier
- 15mm wood fiber board
- 235mm timber frame structure;
- cellulose insulation
- 15mm wood fiber board
- 30mm installation wall; vertical timber battens
- 7mm triplex finishing

Detail 2.3

roof (t.t.b)

150mm extensive substrate

filter layer

drainage layer

absorption layer

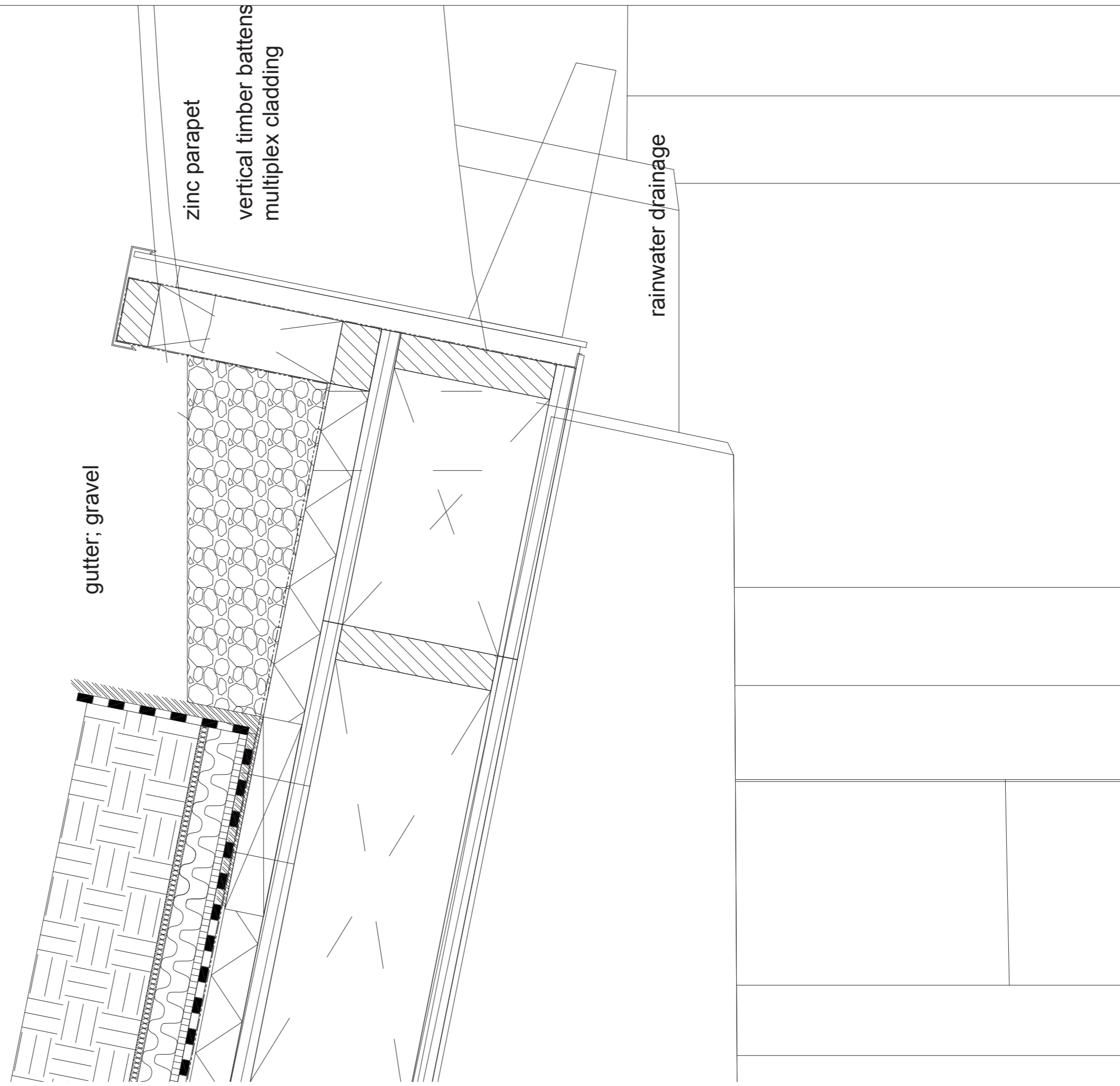
root barrier

waterproofing layer

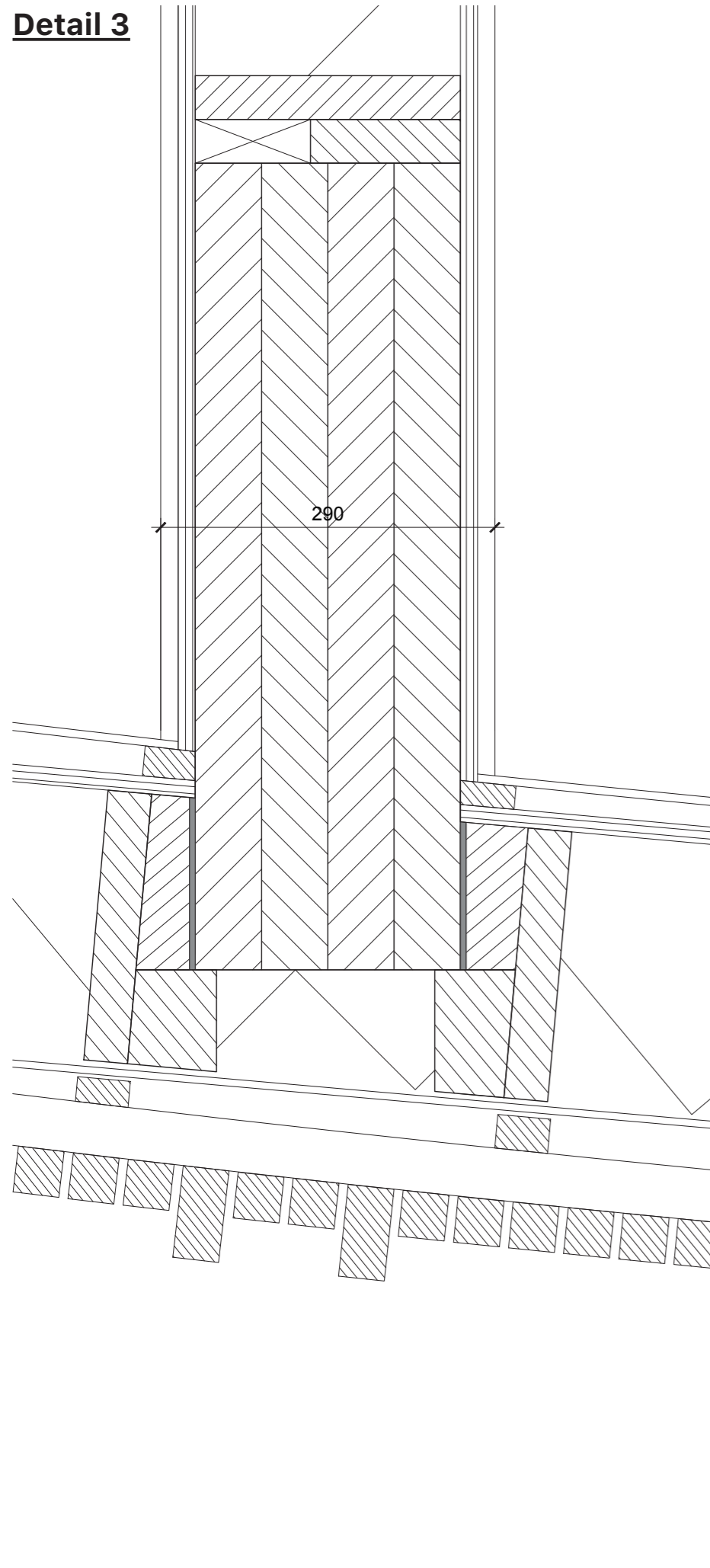
250x2400mm timber hollow core elements

7mm multiplex boarding

230x700mm laminated timber beam (load-bearing)

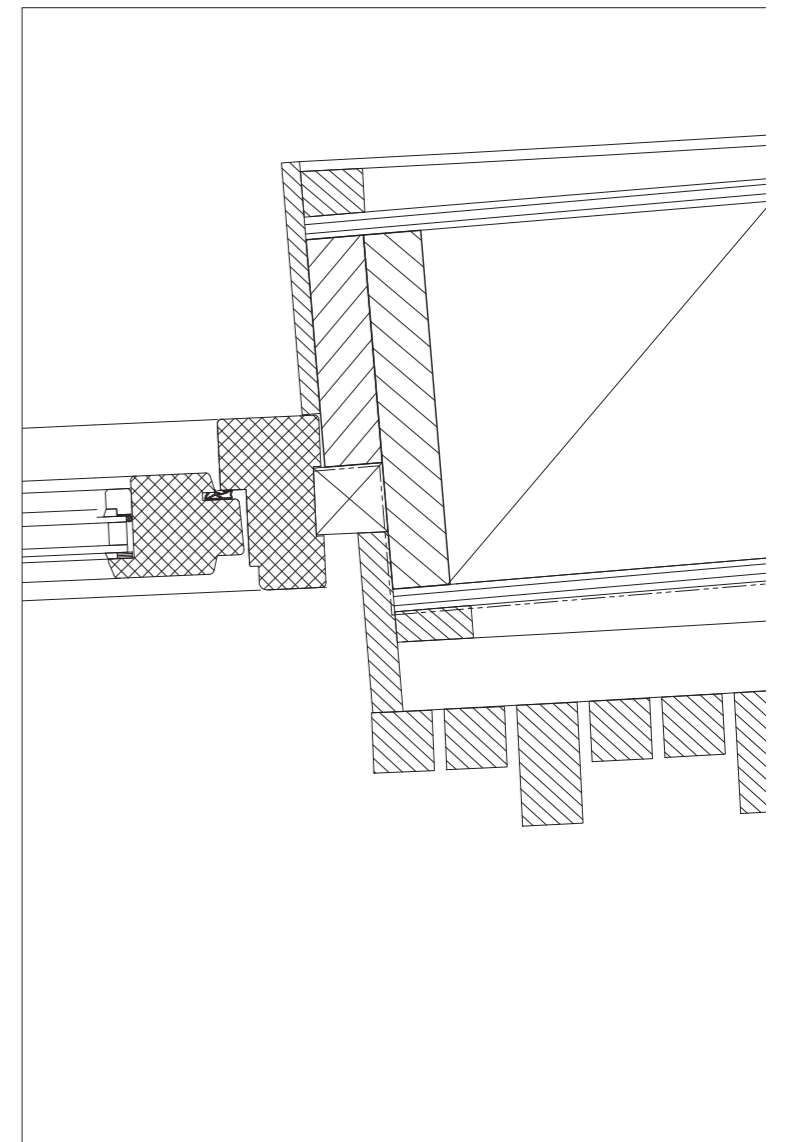
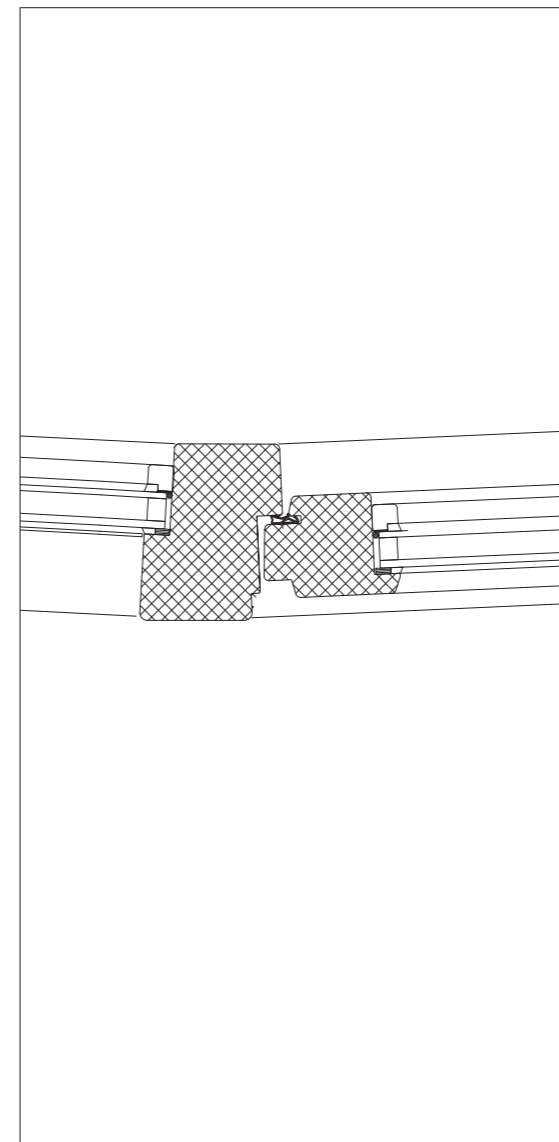
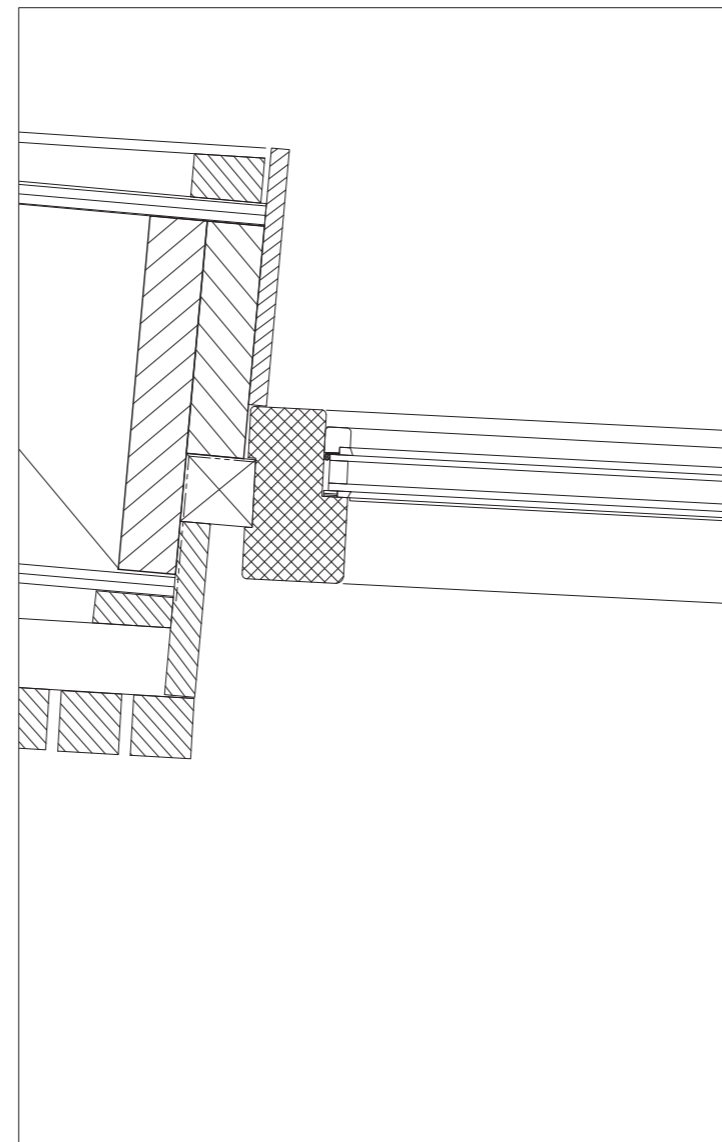


Detail 3

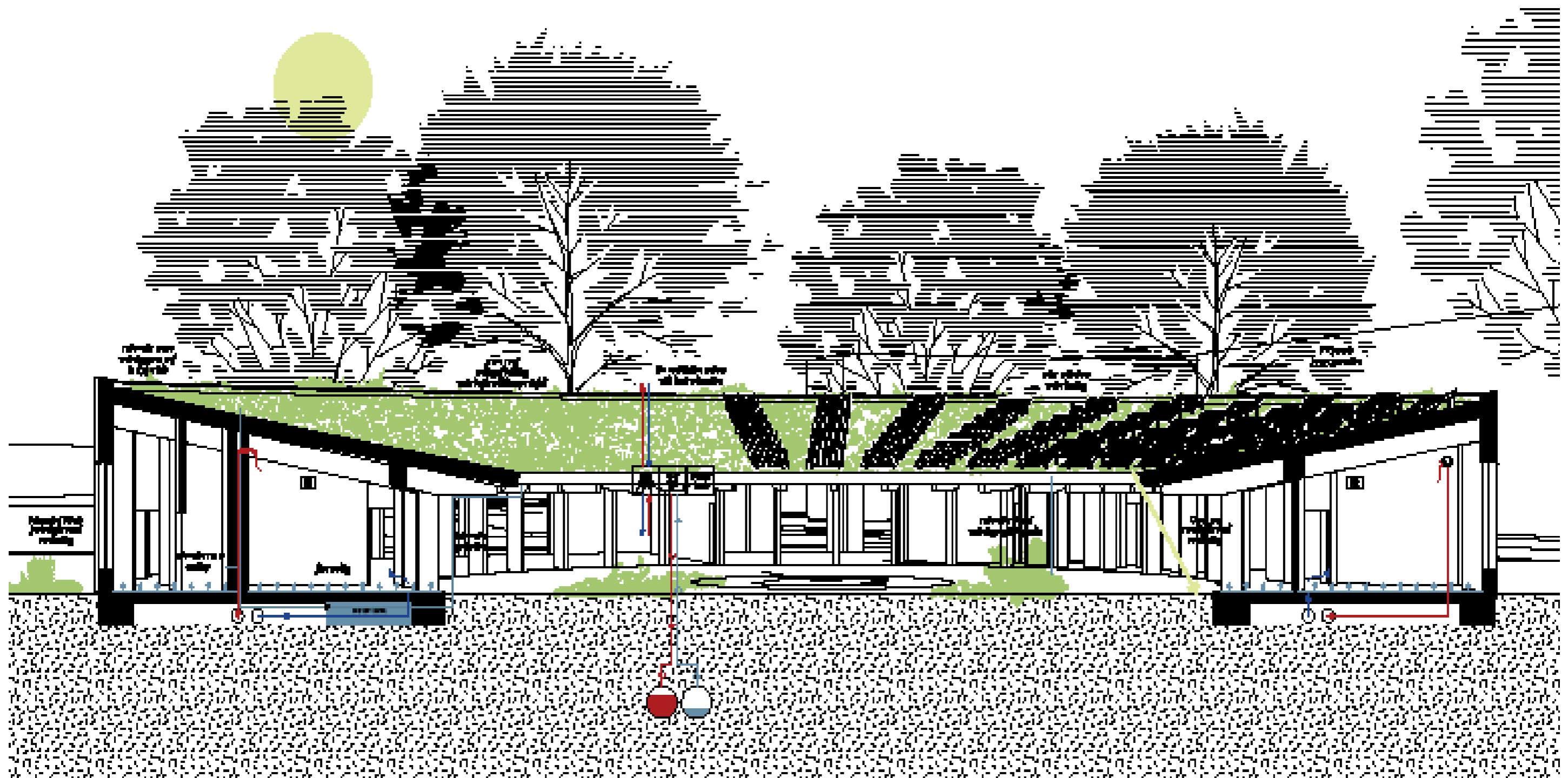


envelope (i.t.o.)

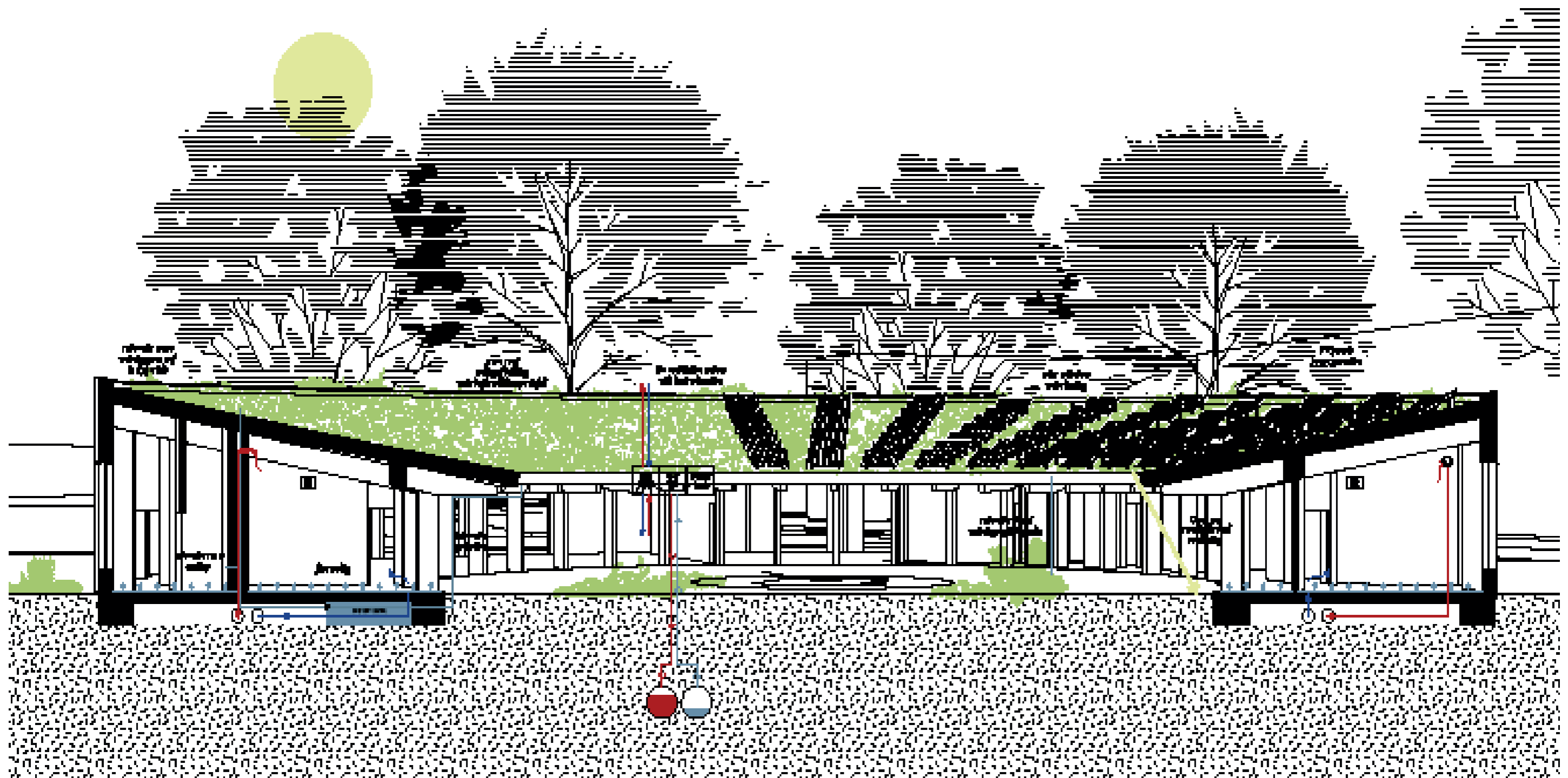
- 7mm triplex finishing
- 30mm installation wall with vertical timber battens
- 15mm wood fiber board
- 235mm timber frame structure with cellulose insulation
- 15mm wood fiber board
- vapour-open water barrier
- 28mm vertical battens
- 46mm horizontal timber battens
- timber cladding 40x40mm;40x80mm;88x80mm



Climate concept - summer



Climate concept - winter



Impression - entrance



Impression - café entrance



Impression - youth centre entrance



Impression - hangout



Impression - hallway



