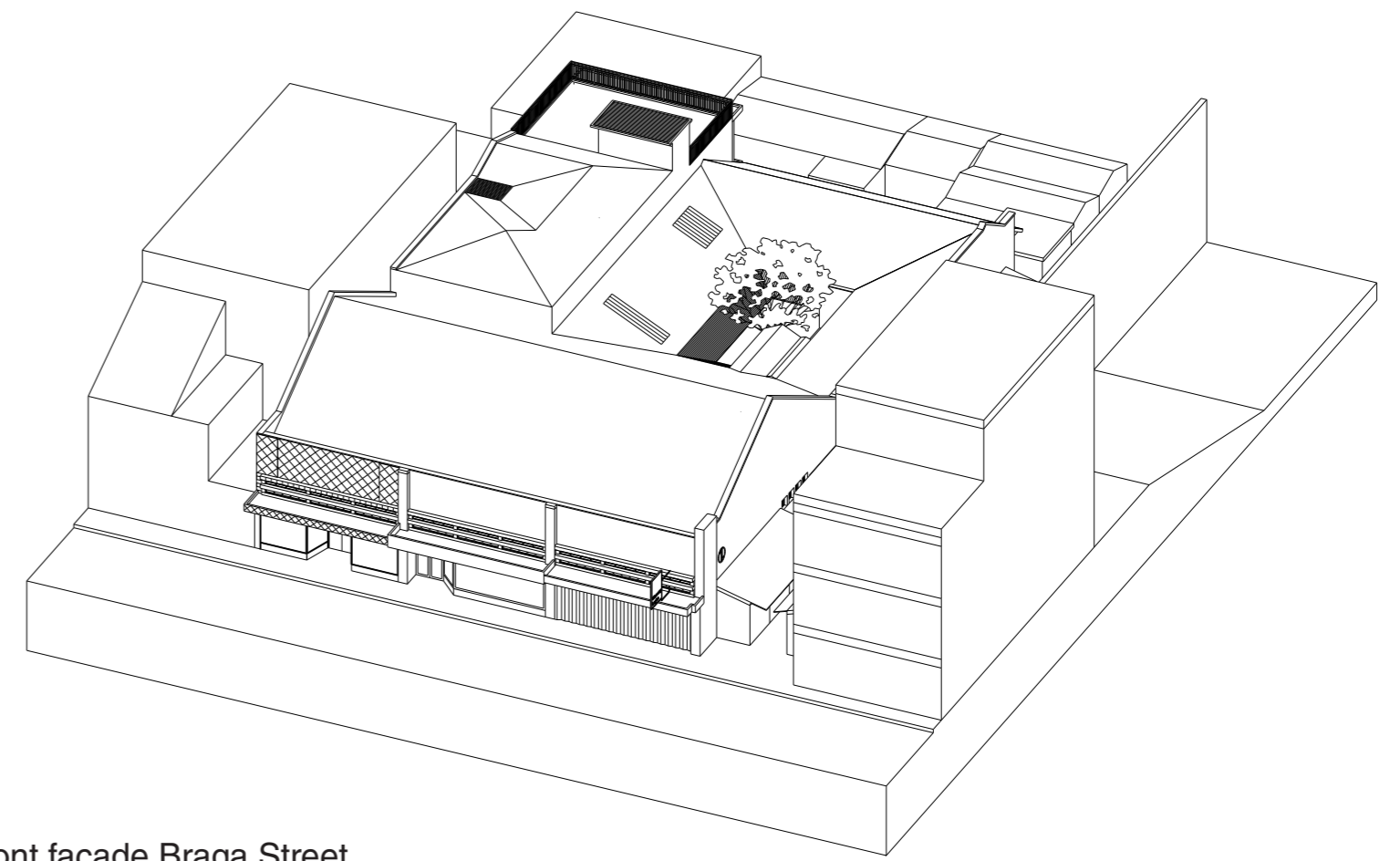
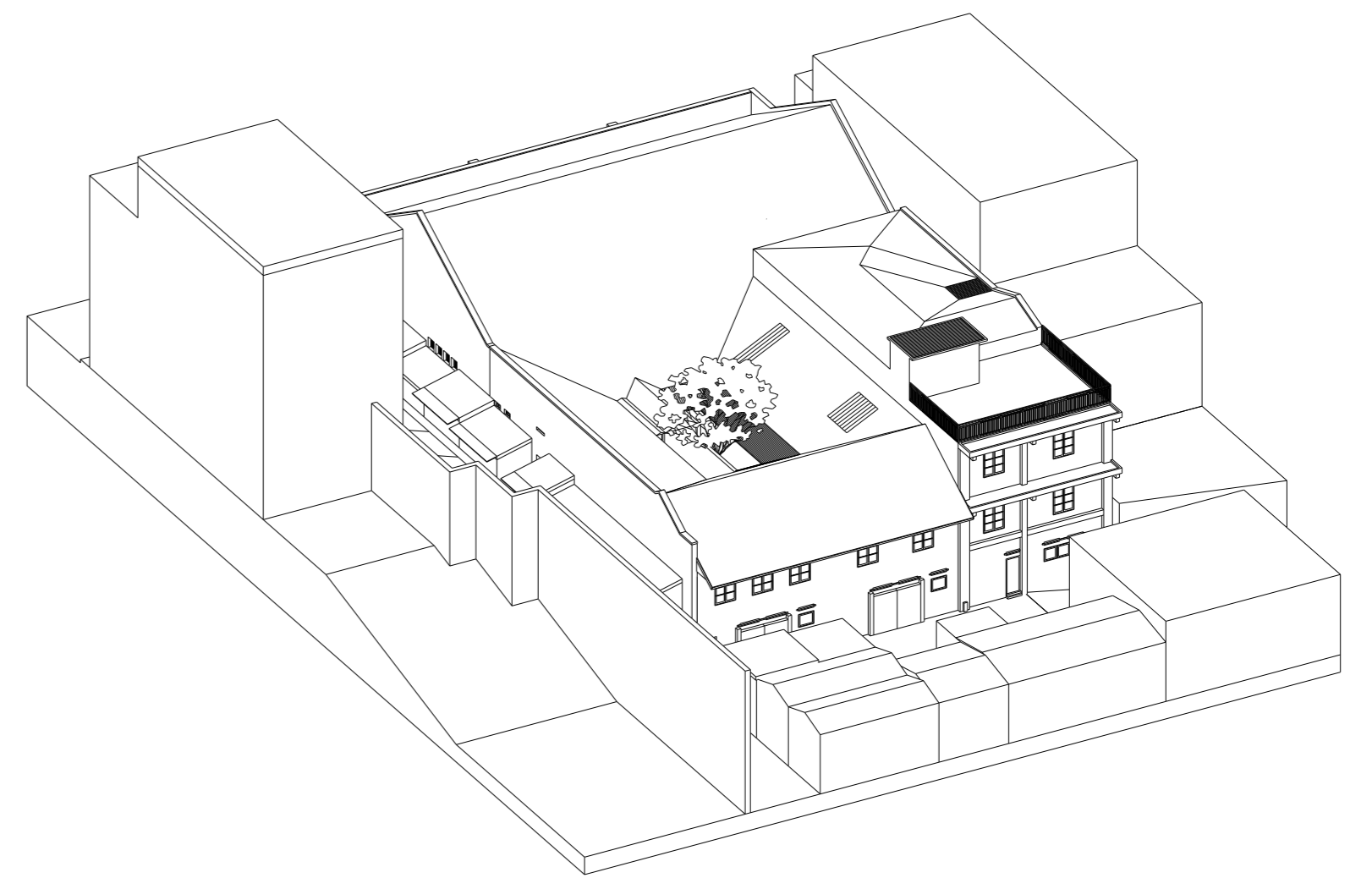


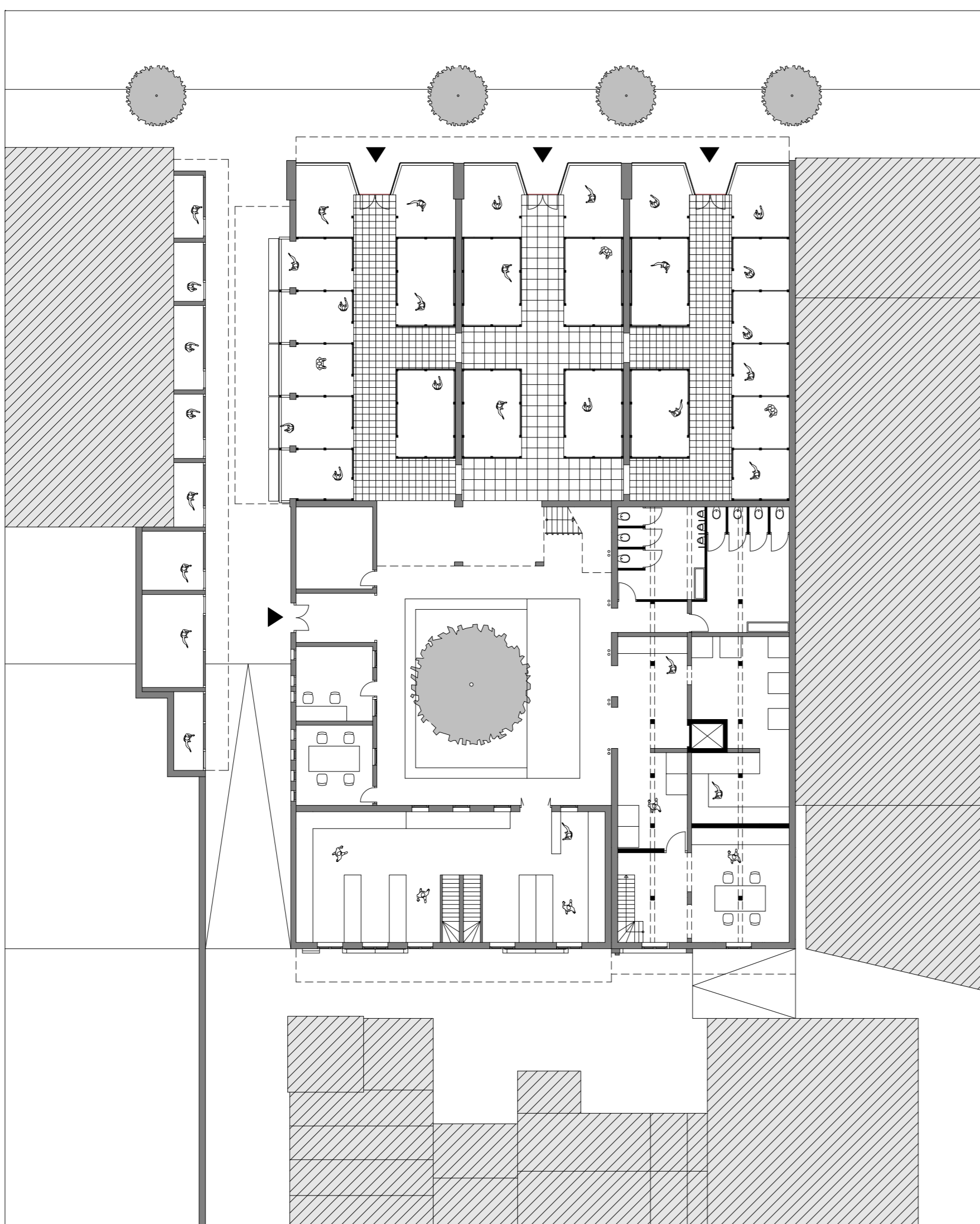
Current ground floor | 1:200



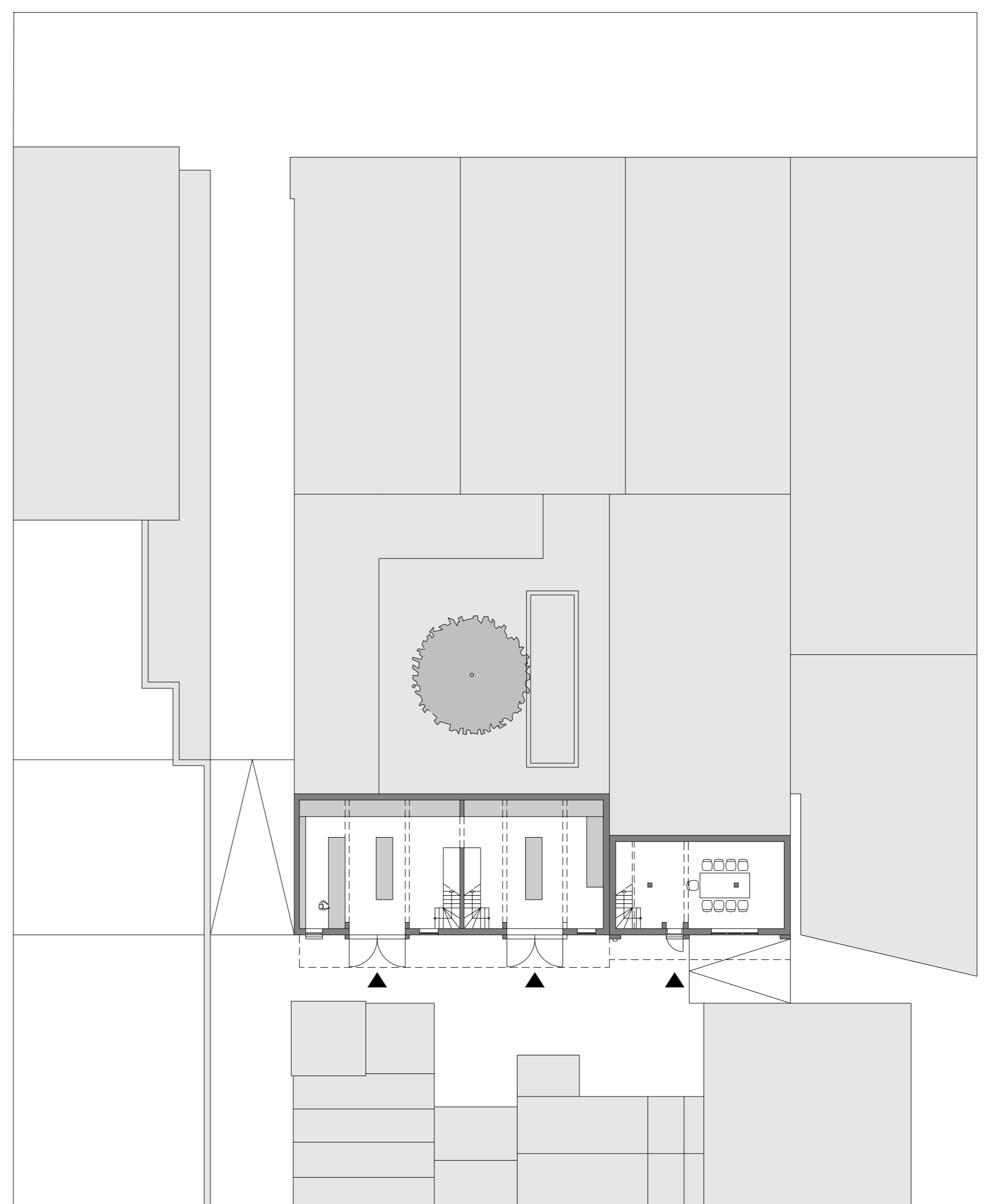
Front facade Braga Street



Back facade Kampung Braga

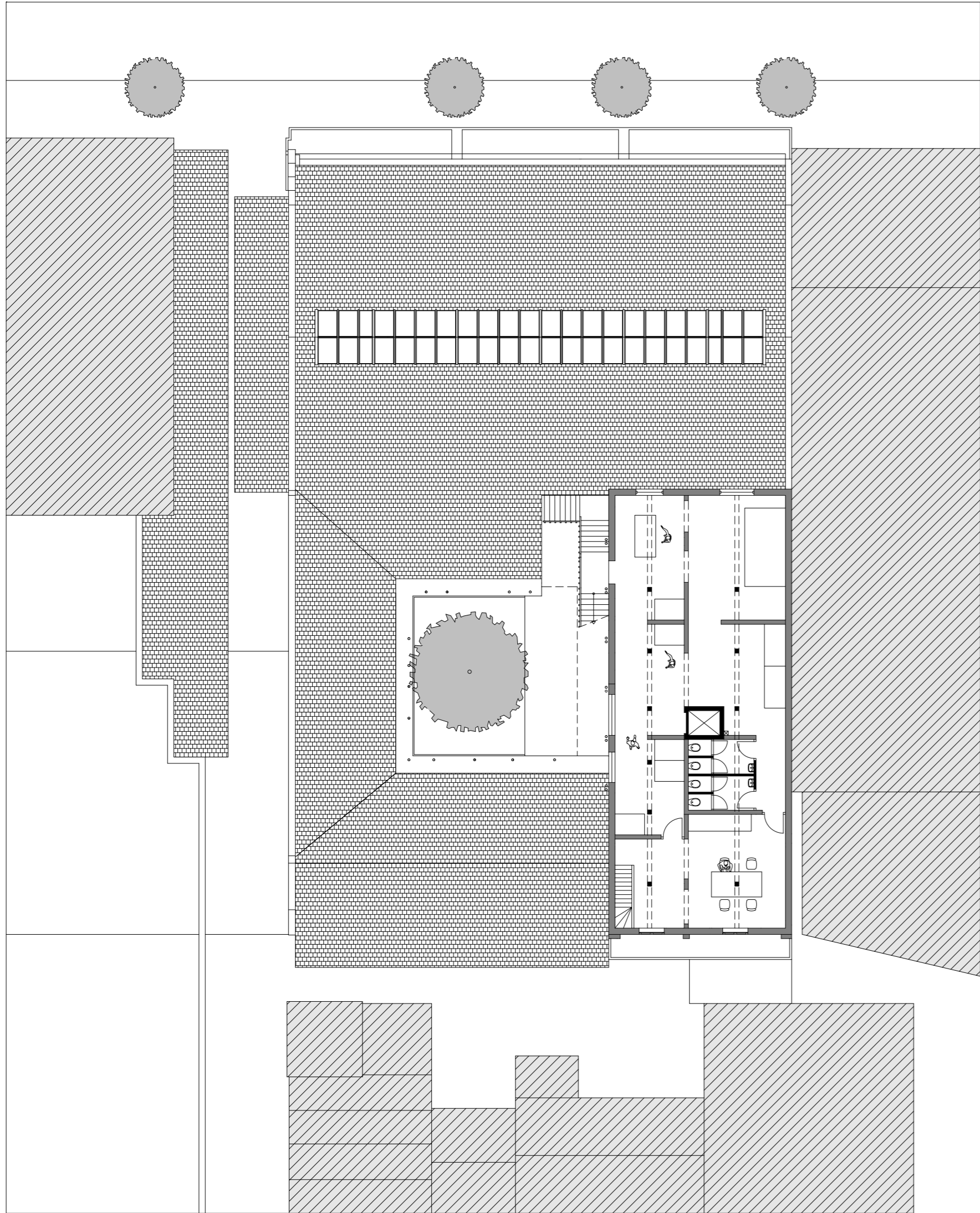


New ground floor | 1:200

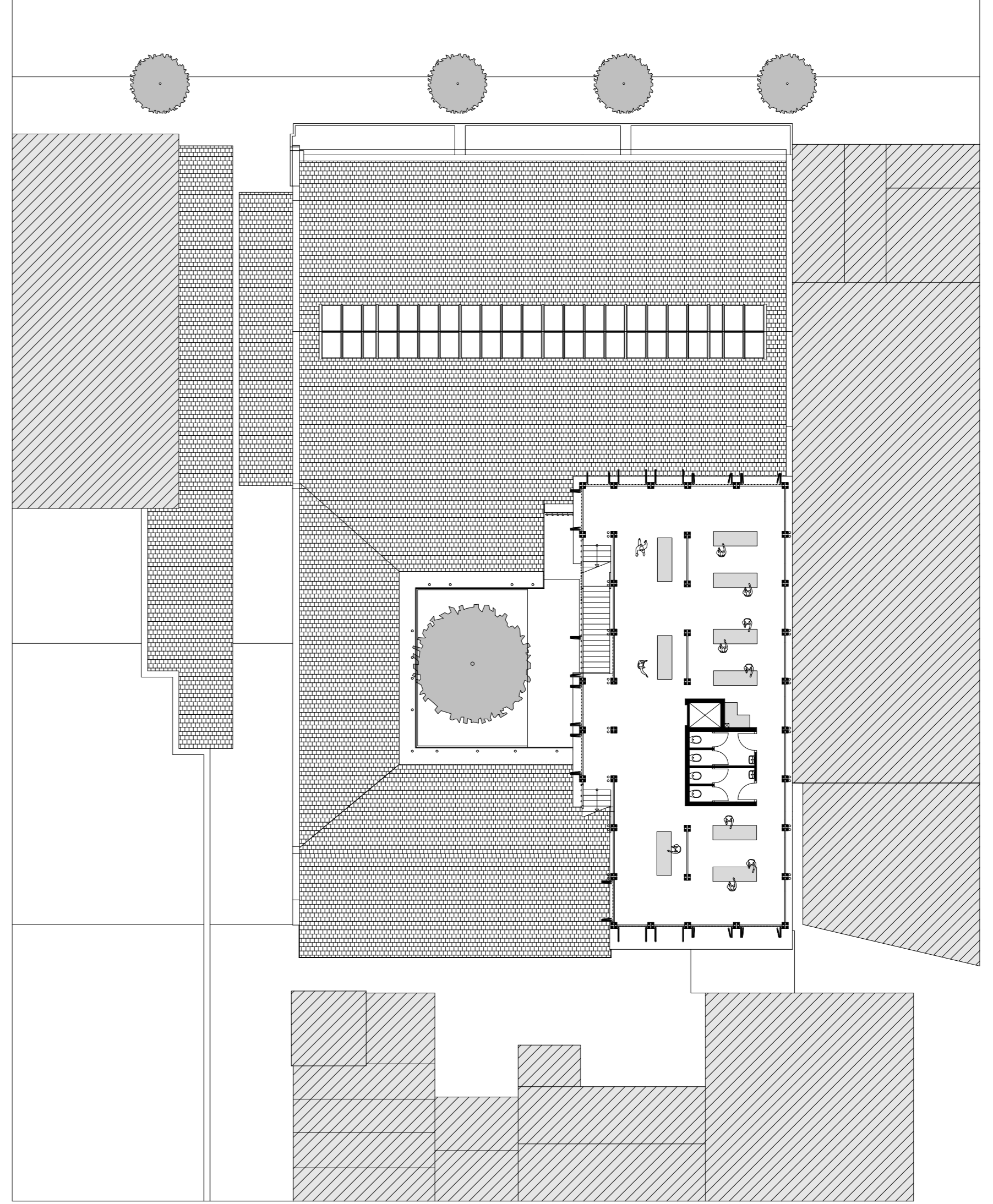


Basement | 1:200

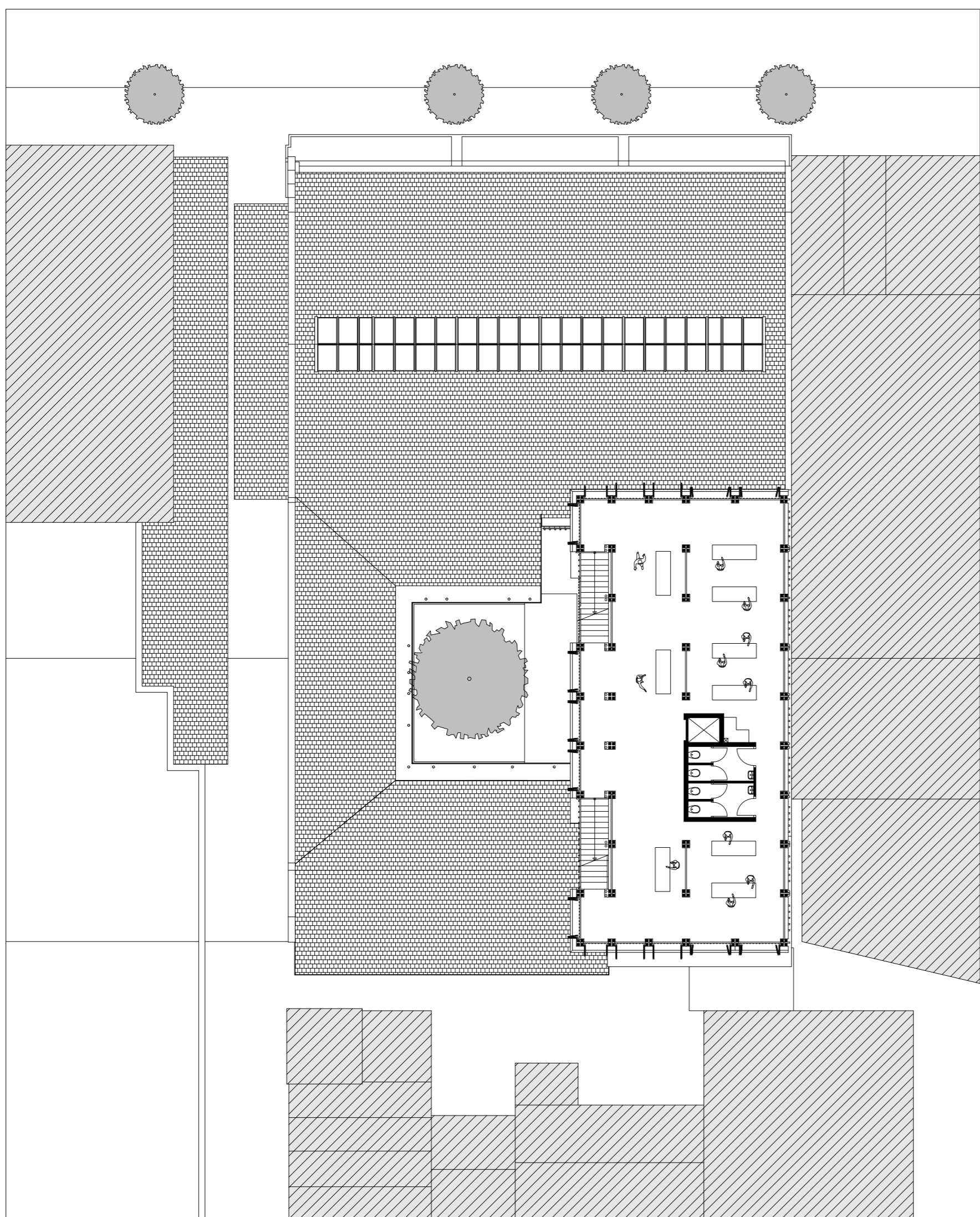




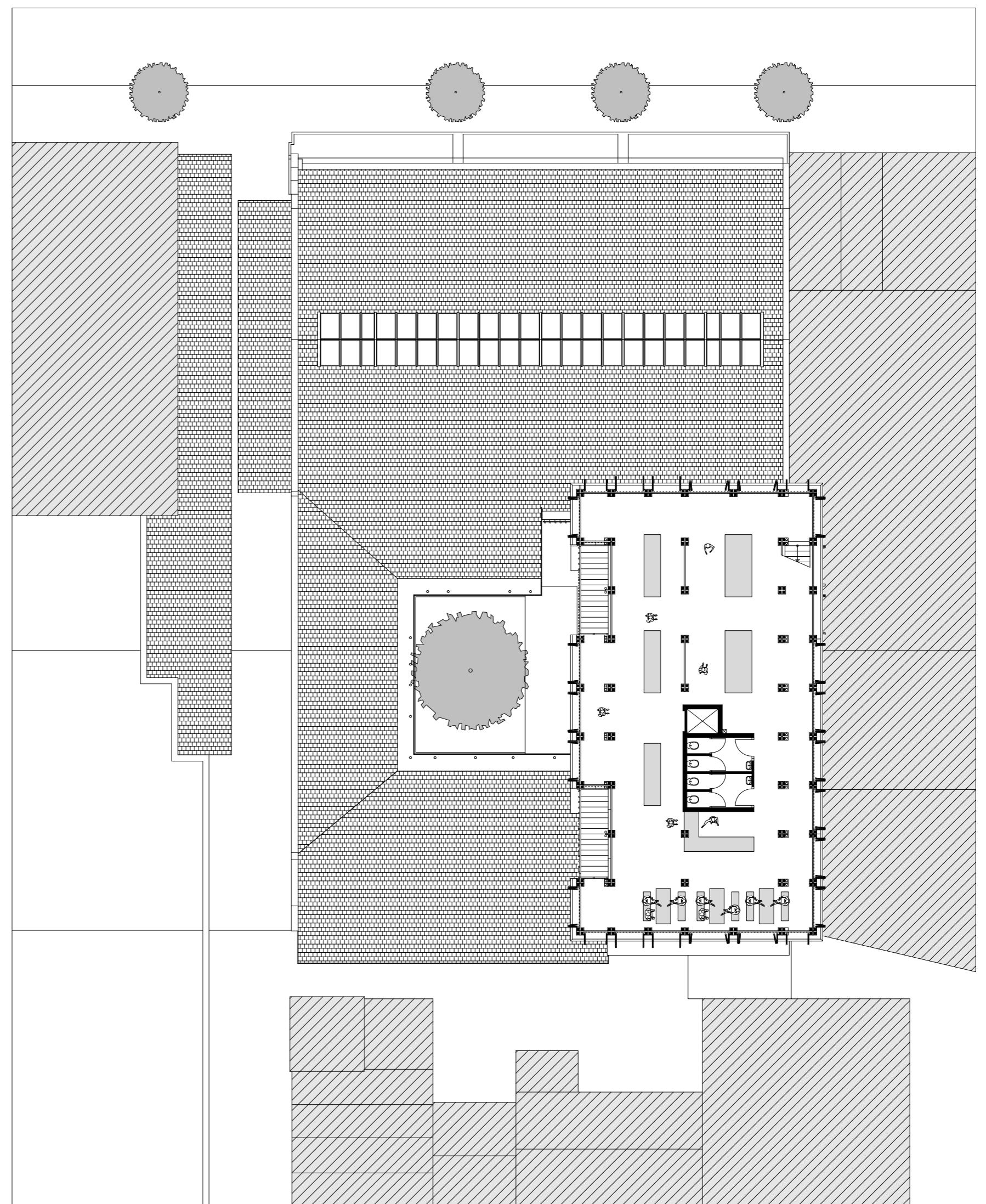
First floor | 1:200



Second floor | 1:200



Third floor | 1:200



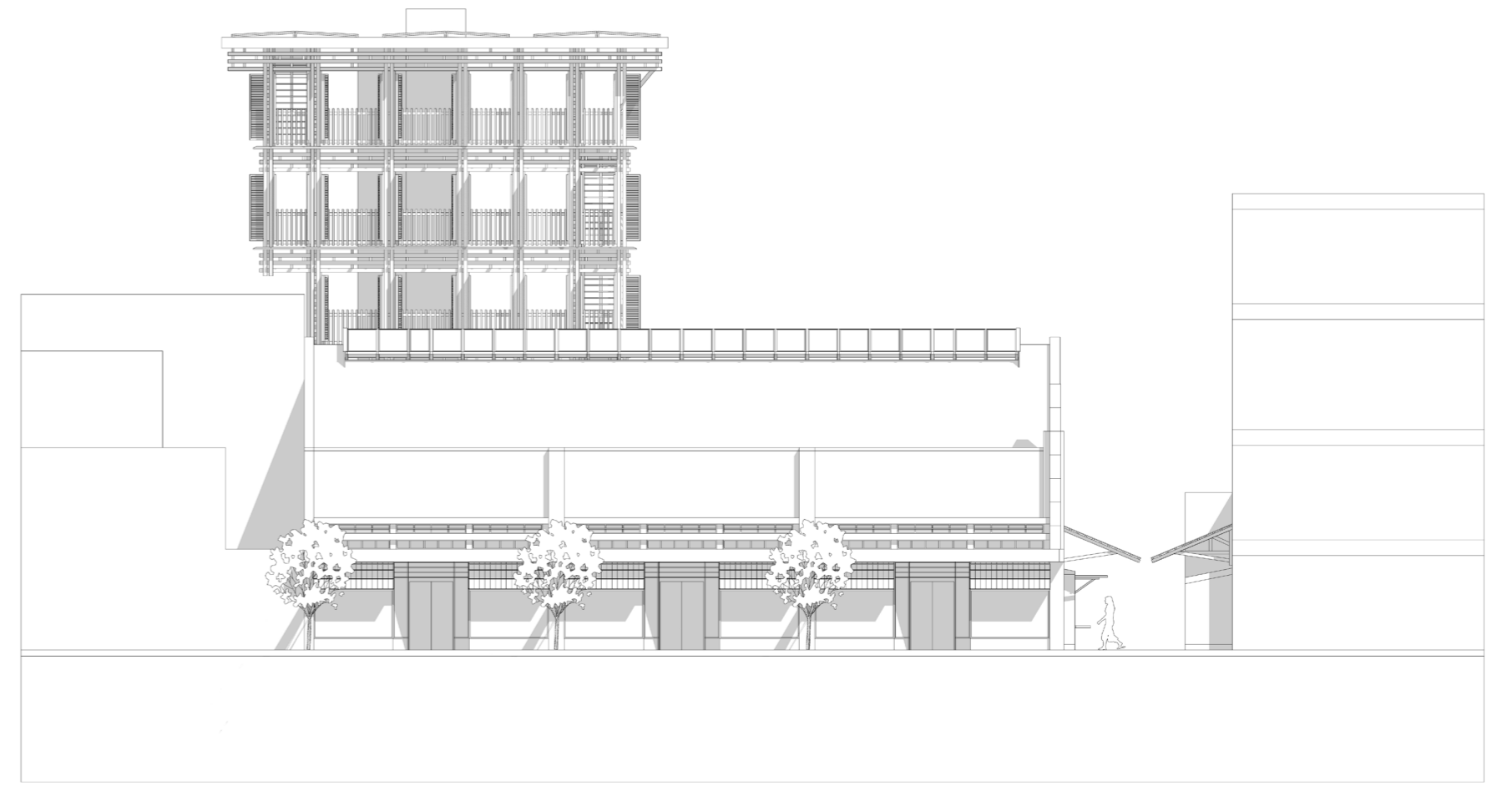
Fourth & Fifth floor | 1:200



North facade | 1:200



East facade | 1:200



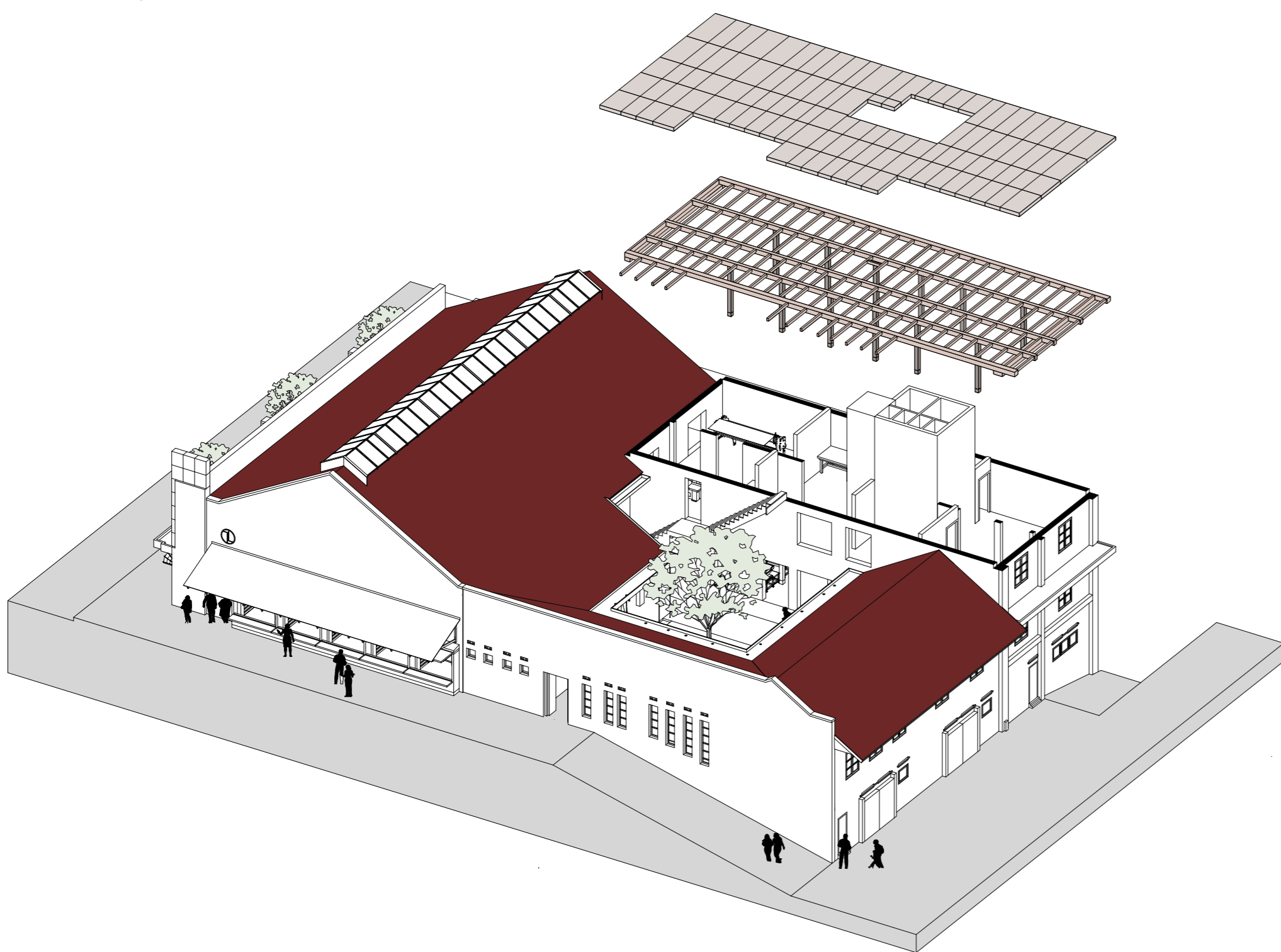
South facade | 1:200



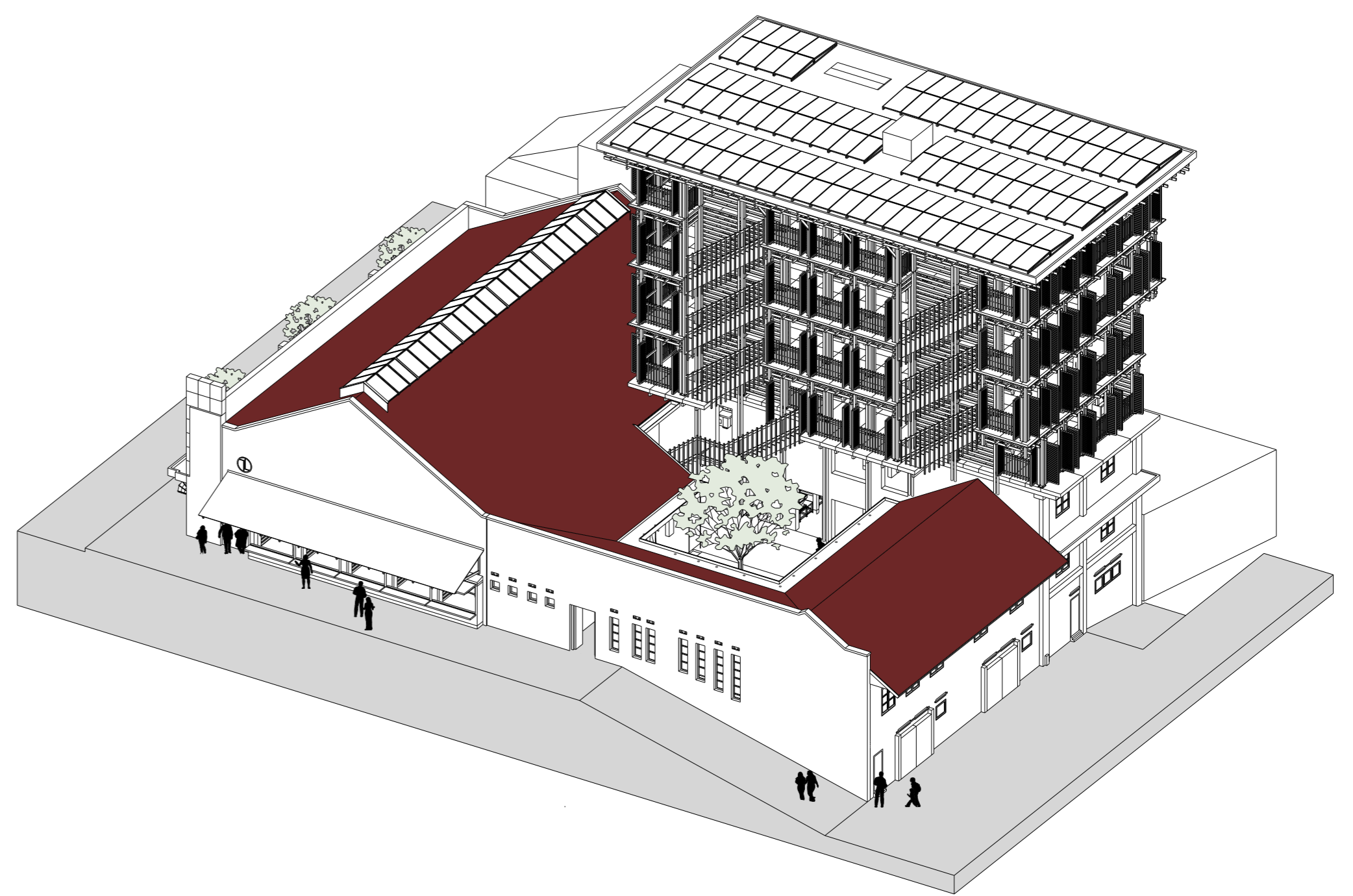
West facade | 1:200



Supporting structure

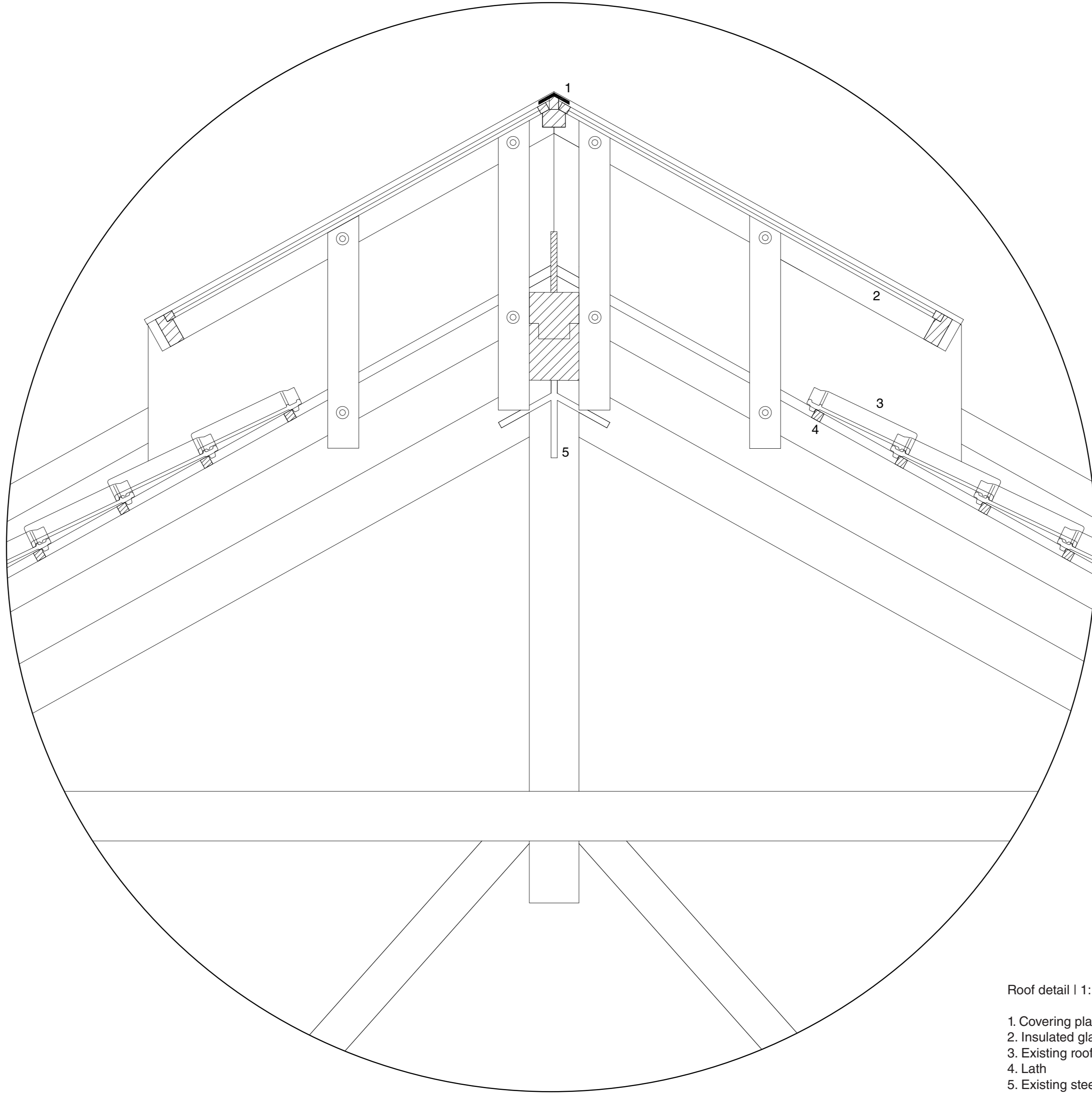


Final structure





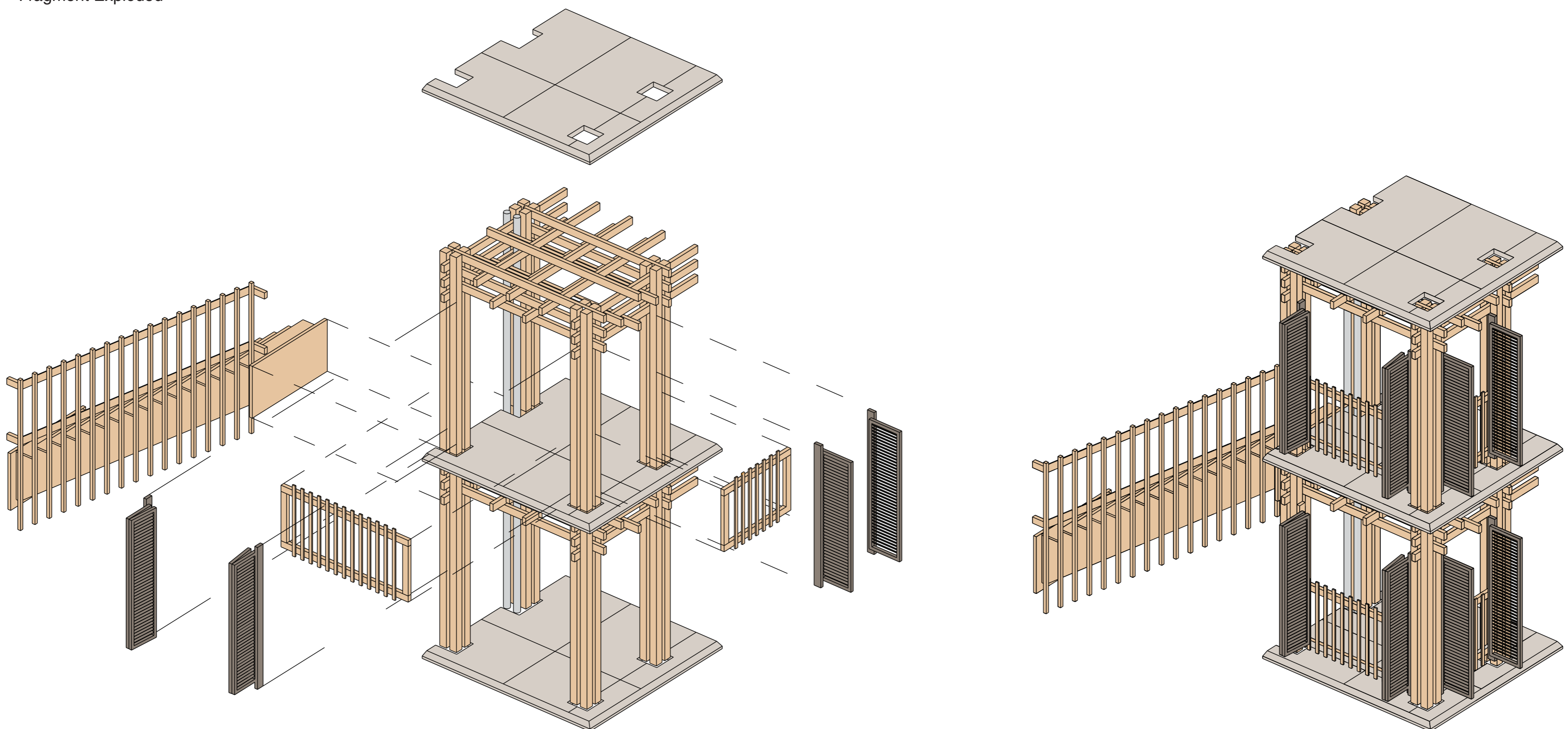
D3



Roof detail | 1: 10

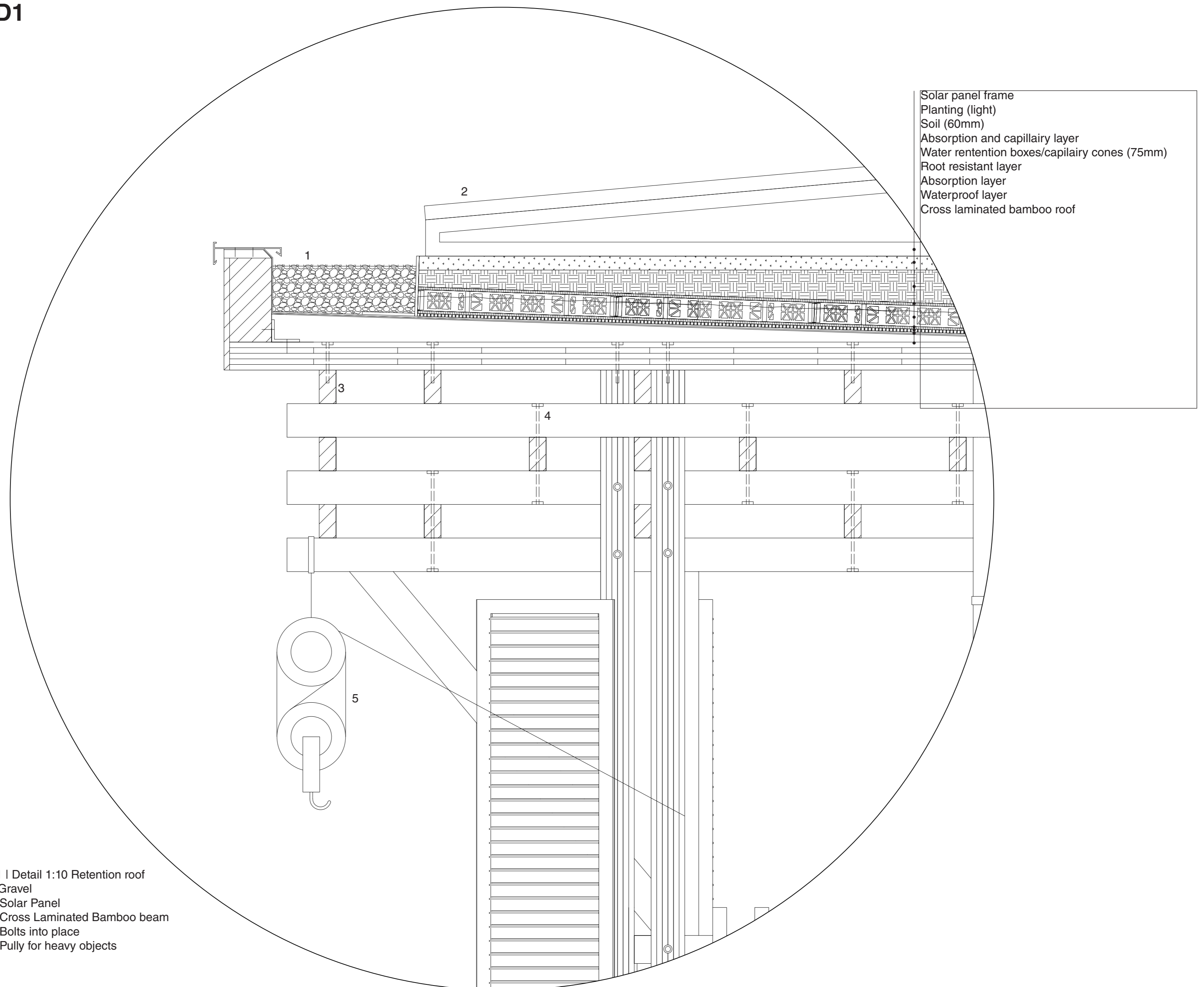
- 1. Covering plate
- 2. Insulated glazing (solar protection)
- 3. Existing roof tiles
- 4. Lath
- 5. Existing steel connector

Fragment Exploded

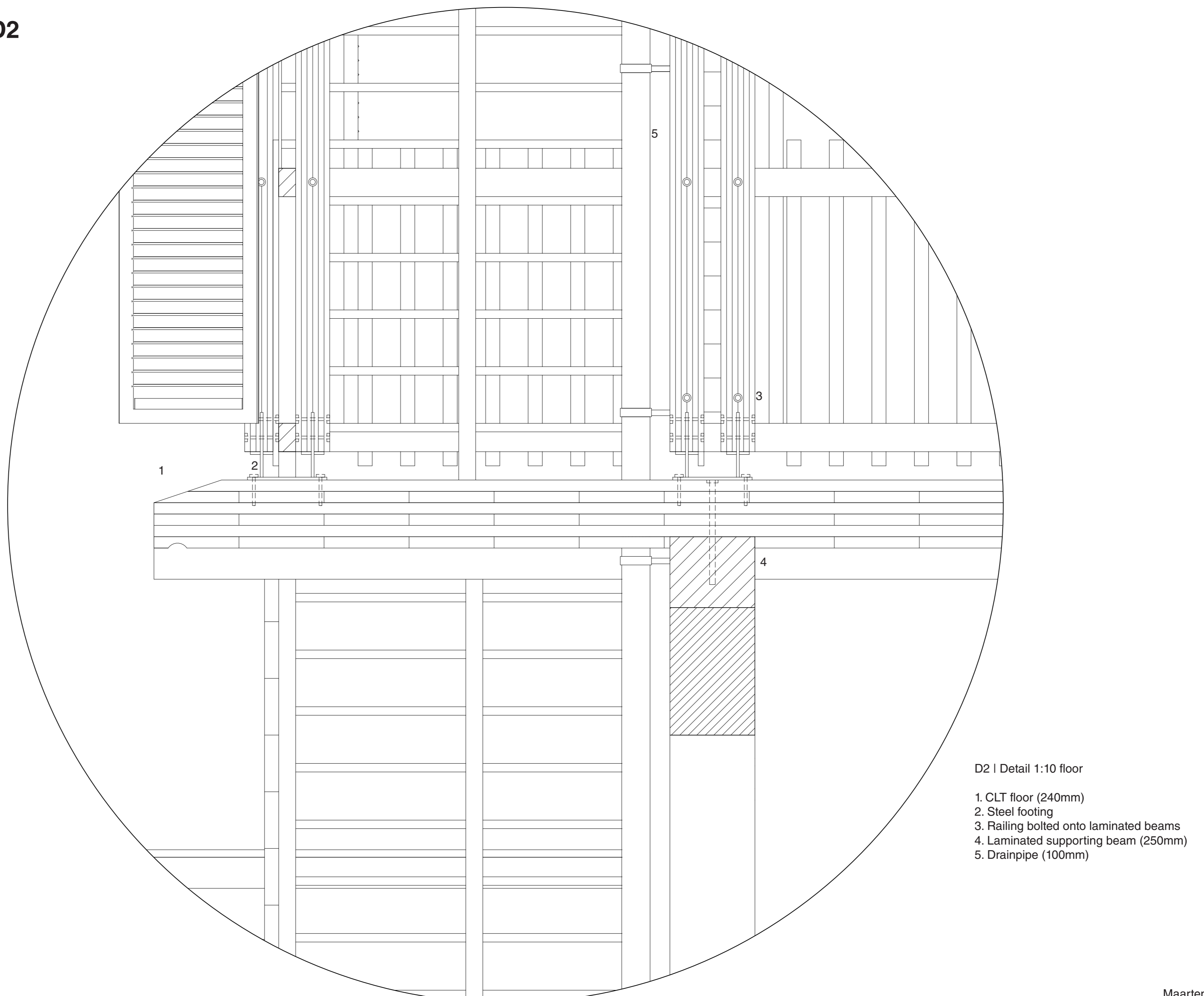




**D1**

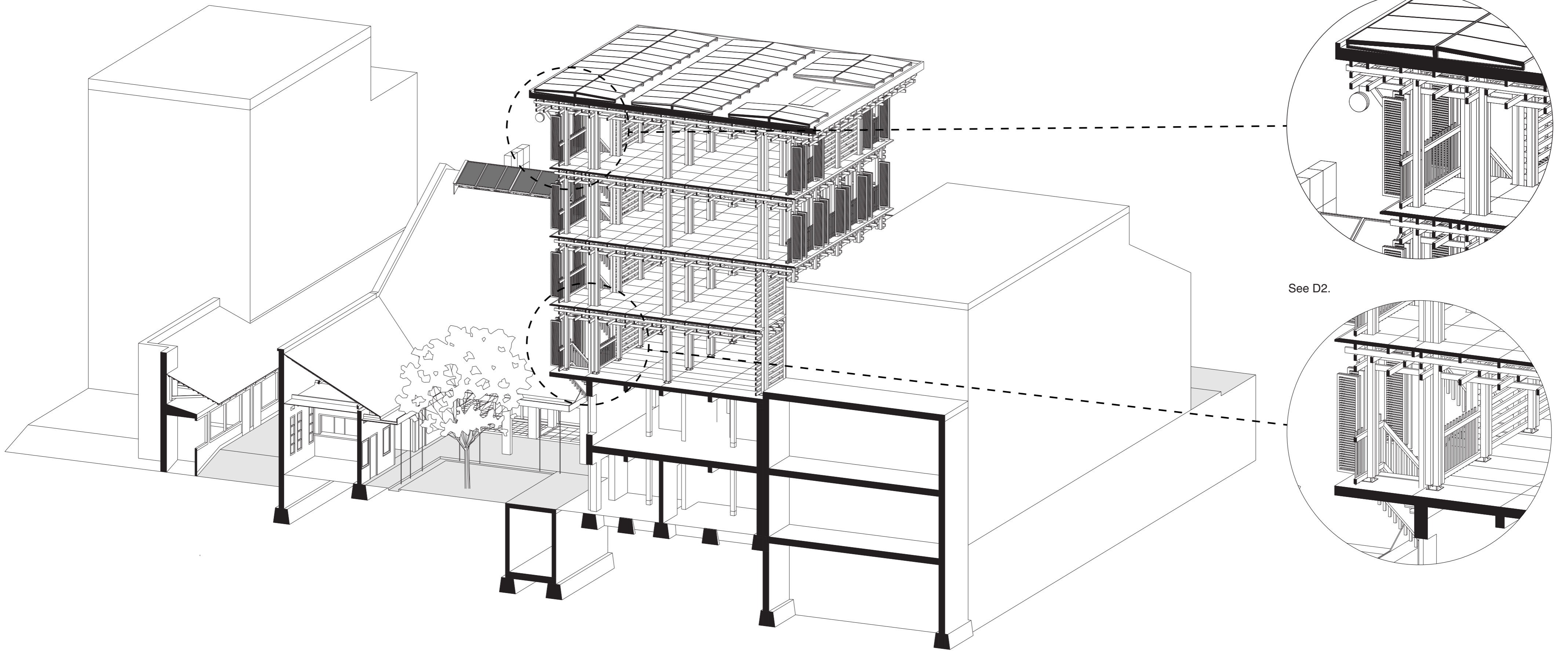


**D2**

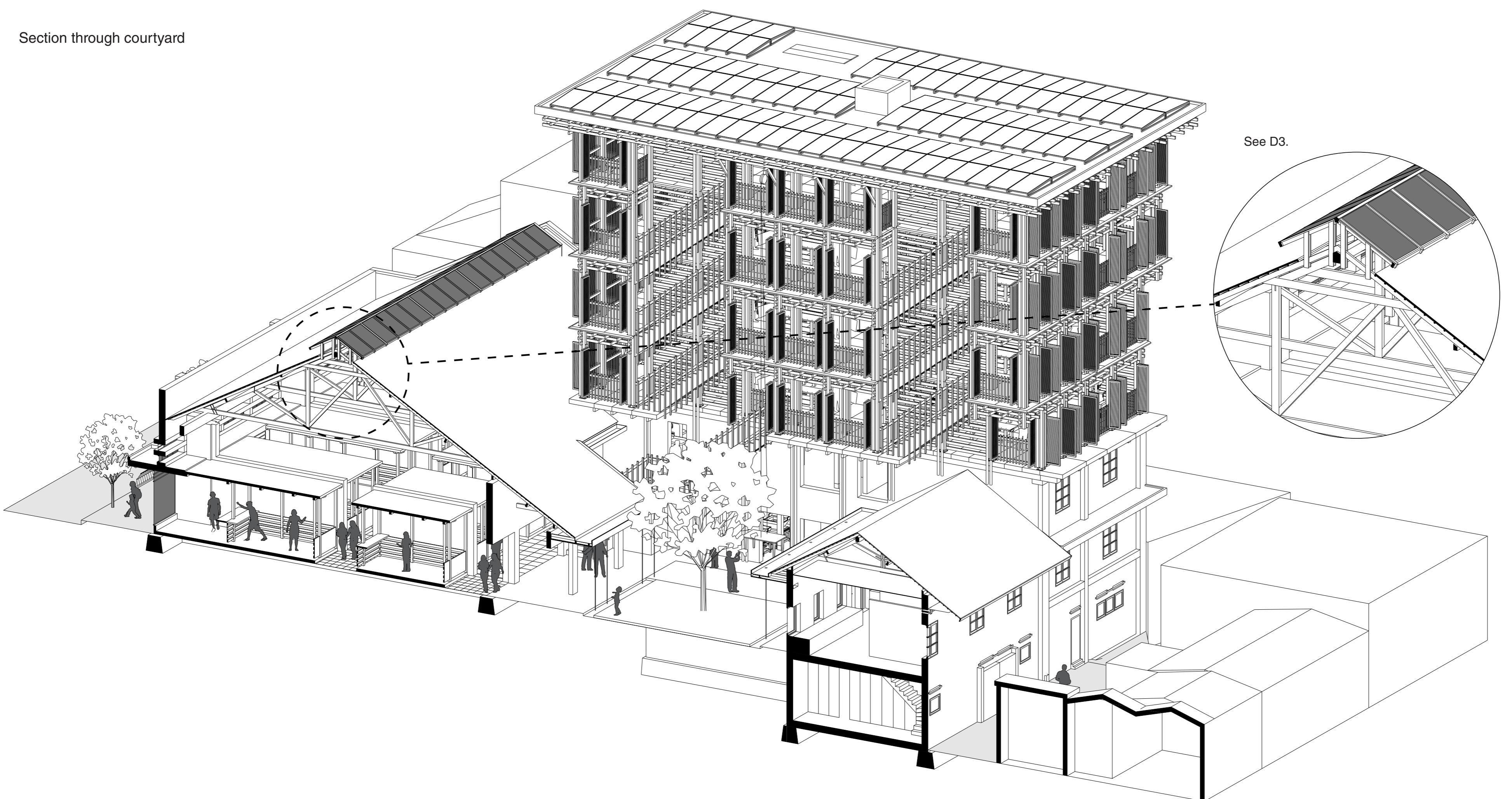




Section through tower



Section through courtyard







Courtyard with rainchains



Gang Cikapundung with shops



Craftmarket with visible roof construction