

THE SUSPENDED VEIL

// J.A.HENDRIKS |
// MUSEUM OF CONTEMPORARY ART |

>>> ARCHITECTURAL ENGINEERING
>>> LAB04 - APRIL 19, 2011



ROTTERDAM, NL

THE GOAL OF THE SUSPENDED-VEIL PROJECT IS TO ATTRACT HIGHLY SOPHISTICATED RESIDENCES, CATERING INDUSTRIES AND INNOVATIVE BUSINESSES AMONG THE EDUCATIVE STATUS WITHIN THE HELIPARK AREA AS A MEDIUM FOR CITY MARKETING. ITS DESIGN TRIES TO ACCOMPLISH THIS EFFECT BY CREATING A VISUAL IMPRESSION OF A BEACON ALONG THE SHORELINE OF THE NIEUWE MARKS AND RECONNECTING THE AREA WITH ITS SURROUNDINGS. THE DESIGN CONCEPT IS INSPIRED BY A SPIDERS WEB AND IN ADDITION THE WAY HOW A COCCON LIKE LARVA (PHYSALIS ALCKENGI) IS BUILT UP. THIS KIND OF MATERIAL TRANSLATES THE VISUAL APPEARANCE OF WEAVING INTO SPATIAL RELATIONS BASED ON A TENSIONAL SET-UP THROUGHOUT THE BUILDING. A VEIL WHICH COVERS THE TOTAL GROUND FLOOR HAS AN OPEN-CLOSED CHARACTER AND GIVES THE ATTBENCE INSIDE MORE THE IMPRESSION OF A MARKETPLACE THAN A CULTURE PALACE. A COMBINATION IN RELIEF AND TRANSPARENCY FOR CREATING THE PATTERN WHICH CONTAINS ON ONE HAND ENOUGH PRIVACY AND GIVES ON THE OTHER HAND A REASONABLE AMOUNT OF DAYLIGHT. THE FUTURISTIC APPEARANCE OF THE WRAPPED BUILDING SKIN AND ITS LEVELLED ARCHITECTURE DENSITY WHICH COVERS THE SPACE INSIDE THE BUILDING, CREATES A WHOLE NEW MEANING TO THE DYNAMIC VISUAL CONCEPT IN RELATION TO PRIVATE AND PUBLIC INTERACTION. THE AIM IS TO USE THE MUSEUM OF CONTEMPORARY ART TO REVITALIZE AND RE-ENERGIZE THE HELIPARK AREA AND BY DOING SO CREATING A GATEWAY BETWEEN THE VILLAGES AND MODERN SOCIETY IN ROTTERDAM. THE BUILDING WILL NOT ONLY ACCOMMODATE DIFFERENT KIND OF ART COLLECTIONS, BUT WILL ALSO BE AVAILABLE FOR OTHER FUNCTIONS WITHIN THE REGION OF CREATIVE INDUSTRY: STUDIOS WHERE ARTISTS CAN EXPAND THEIR CREATIVITY (SCULPTURING & PAINTING), WORKSHOPS WILL BE HELD TO EDUCATE AND FIND THE CREATIVITY WITHIN ONE ANOTHER, THEATER FOR DISPLAYING ALL SORTS OF MEDIA AND OF COURSE IN ADDITION A CAFETERIA, ADMINISTRATIVE OFFICES, LOUNGE AREAS, SHOPPING AND PARKING FACILITIES.

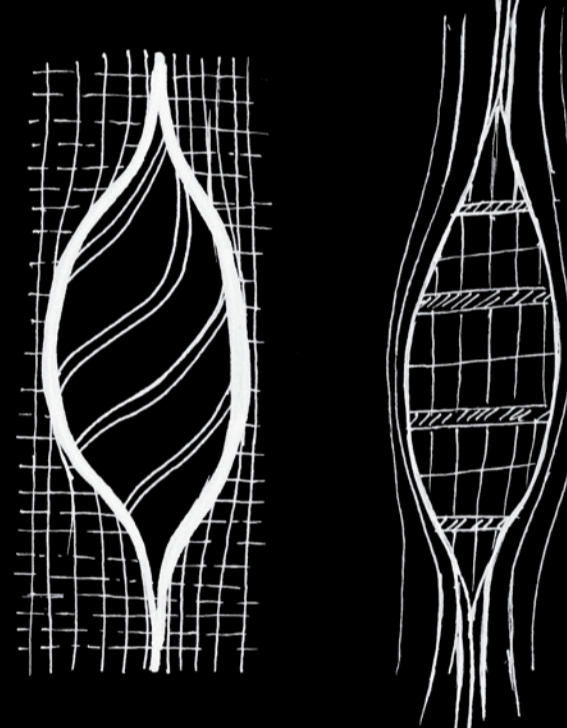


WEAVING



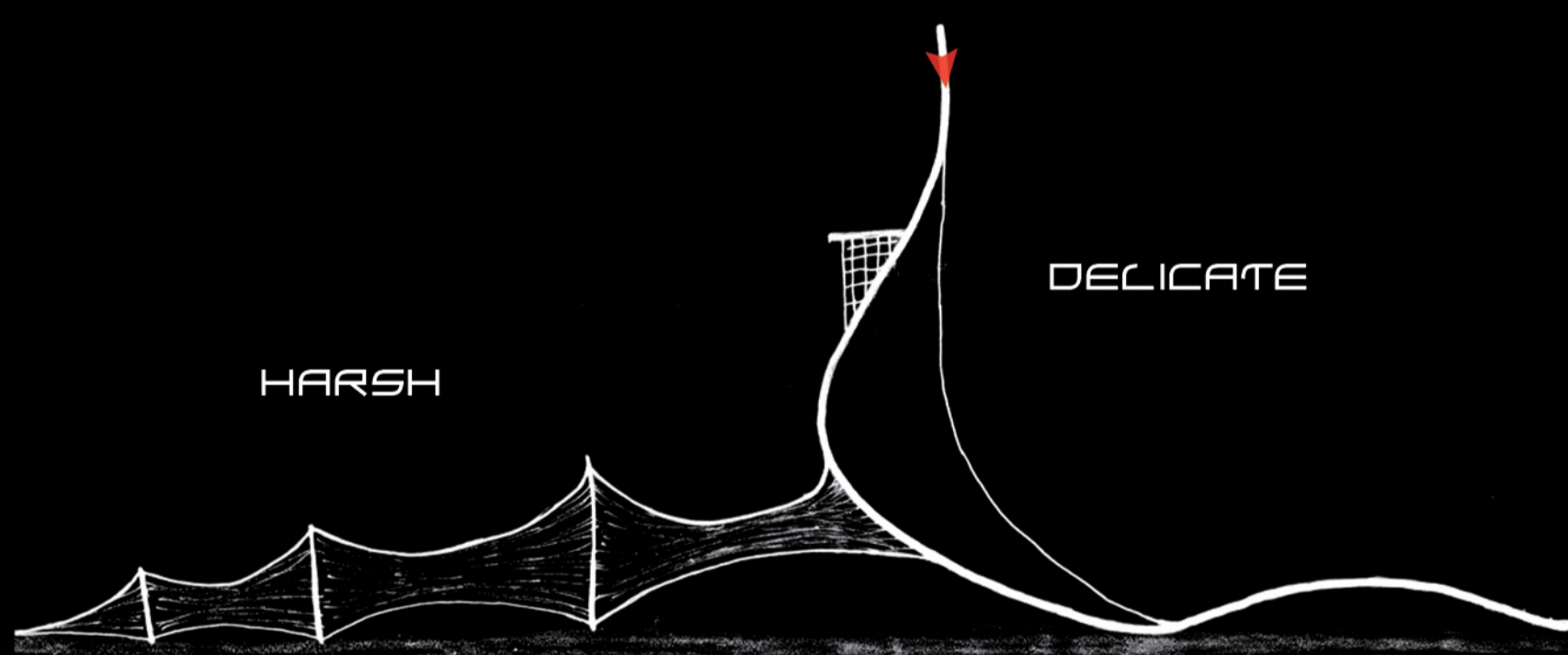
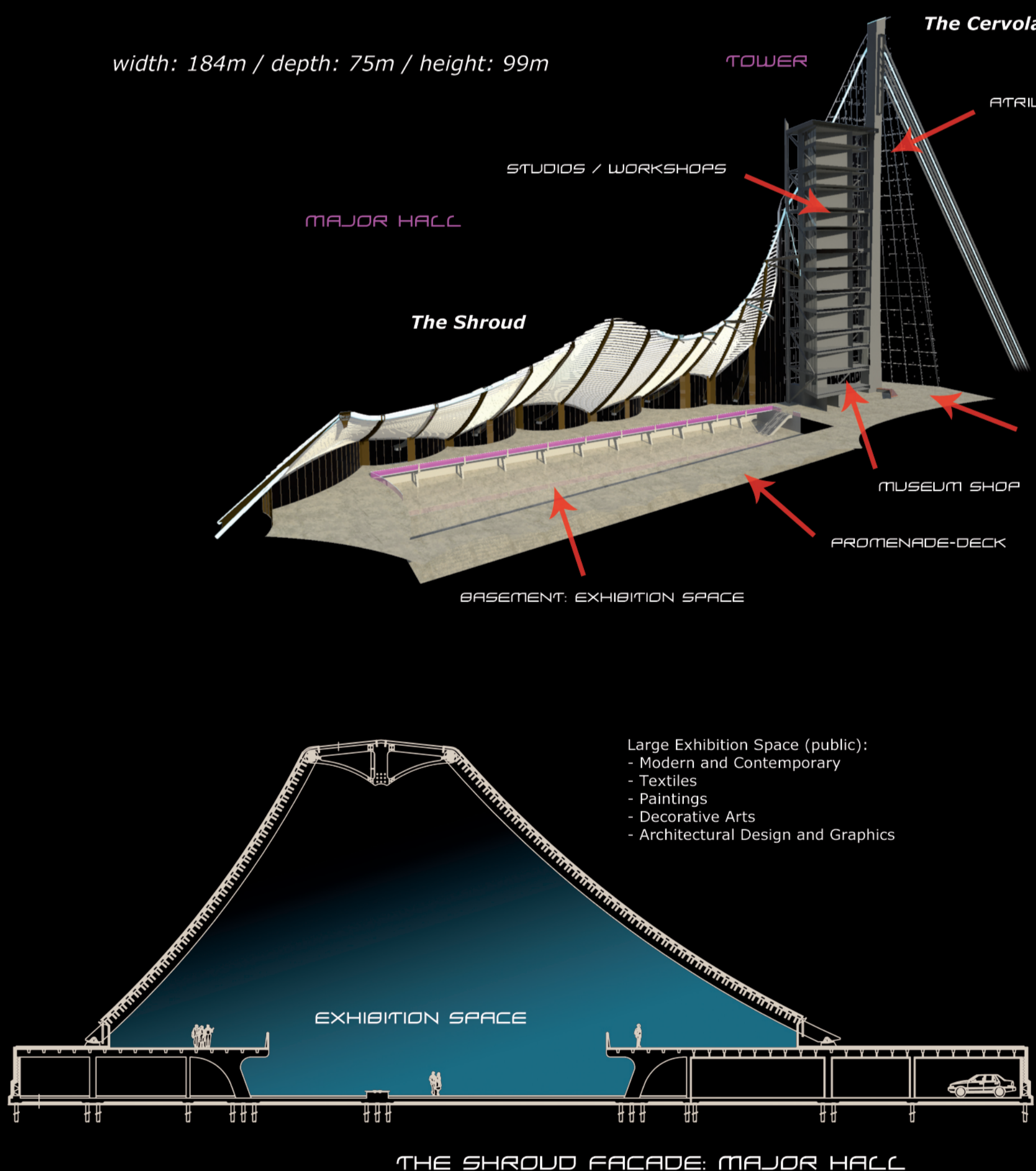
PHYSALIS ALCKENGI

THEME



MANIPULATION OF THE MESH

width: 184m / depth: 75m / height: 99m



DELICATE

HARSH

OAK PROCESSIONARY



- 3D space (overgrown)
- freedom
- closed (harsh)
- more material, more weight
- self-supported with additional components

VS

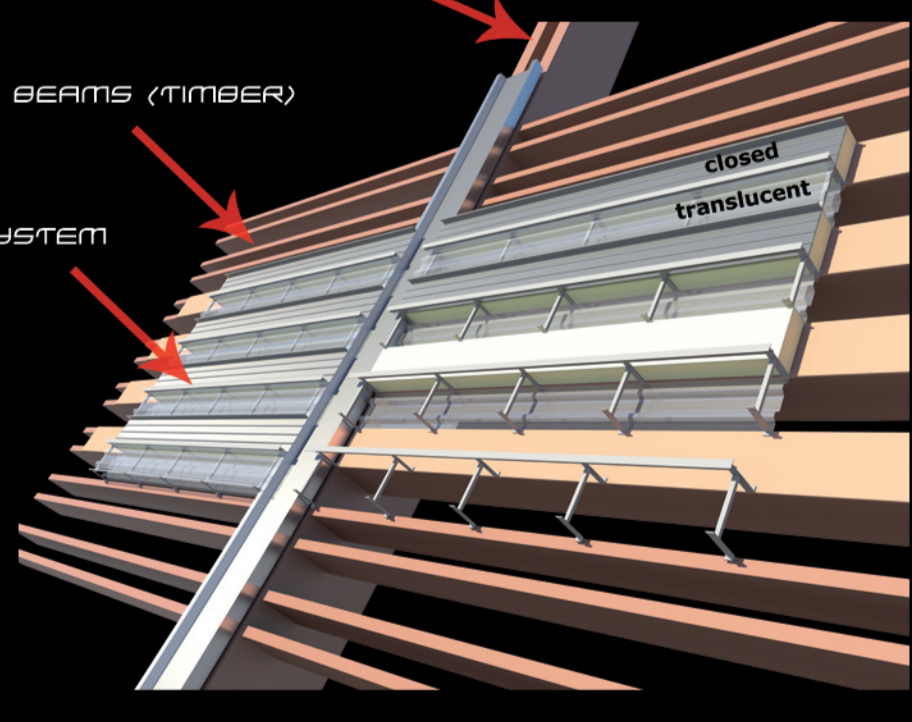


- 1D & 2D components
- geometrical
- open (delicate)
- light-weighted
- essential structural components for maintaining stability

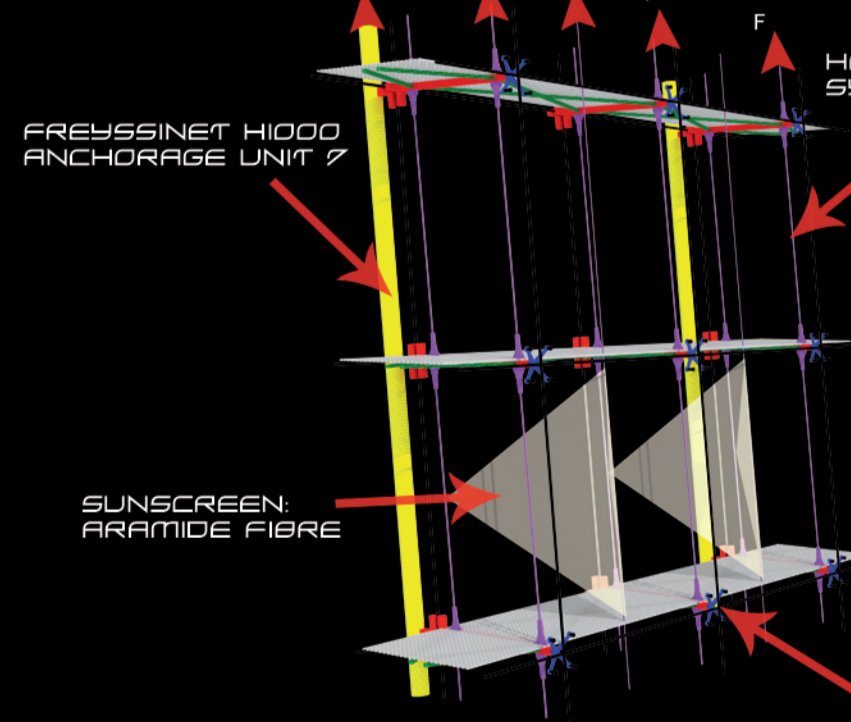
TENSIONIZED ARCH (TIMBER)

LAMINATED BEAMS (TIMBER)

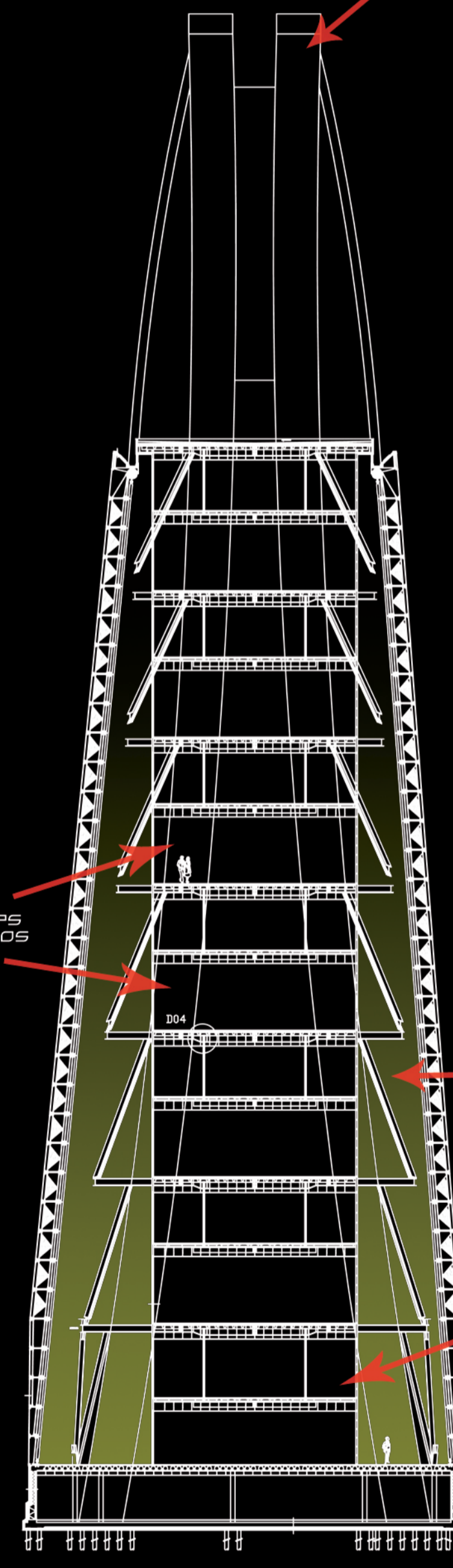
KALZIP SYSTEM



LAMINATED BEAMS (TIMBER) WITH KALZIP SYSTEM



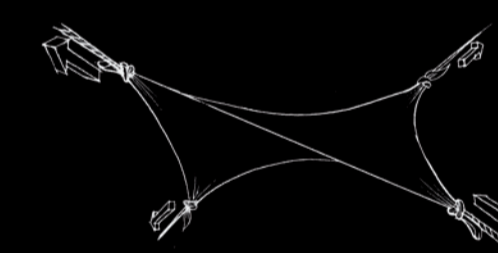
STRUCTURAL GLAZING COMPONENTS



CERVOLANT FACADE: TOWER

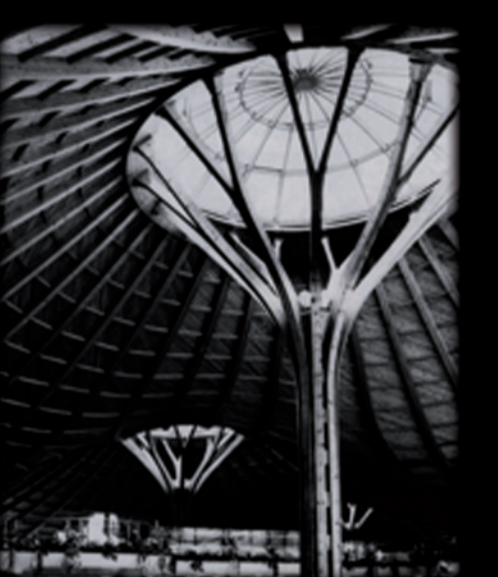


TENSIONAL SET-UP

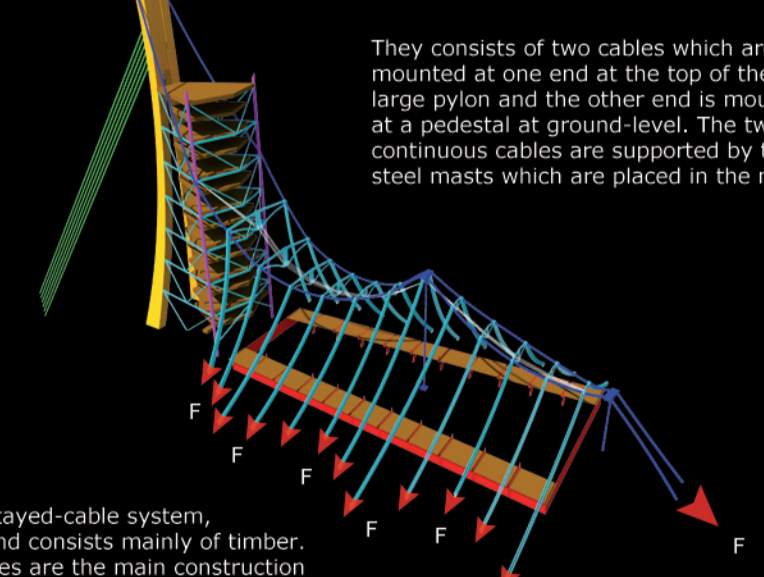


Expp67 German Pavilion Frei Otto Montreal Canada 1967

SUSPENDED SHELL: COMPLETELY OUT OF TIMBER



Solebad Bad Durrheim; Germany



Perpendicular to the stayed-cable system, arches are mounted and consists mainly of timber. These suspended arches are the main construction components of the hung-waved facade and hold down the stayed-cable system in the right position.

