

Spaces of confinement

a banality of good

Drawings

05.07.2021

Author

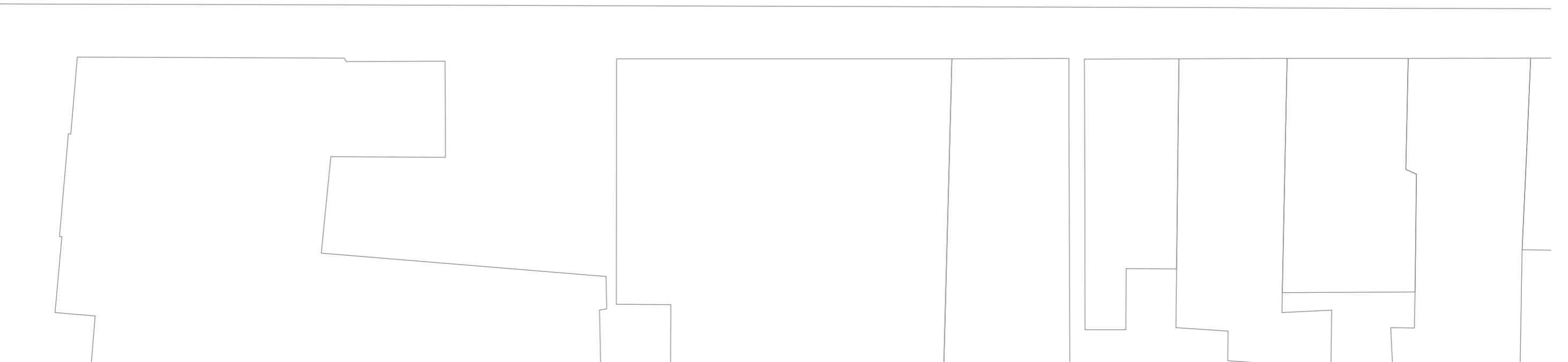
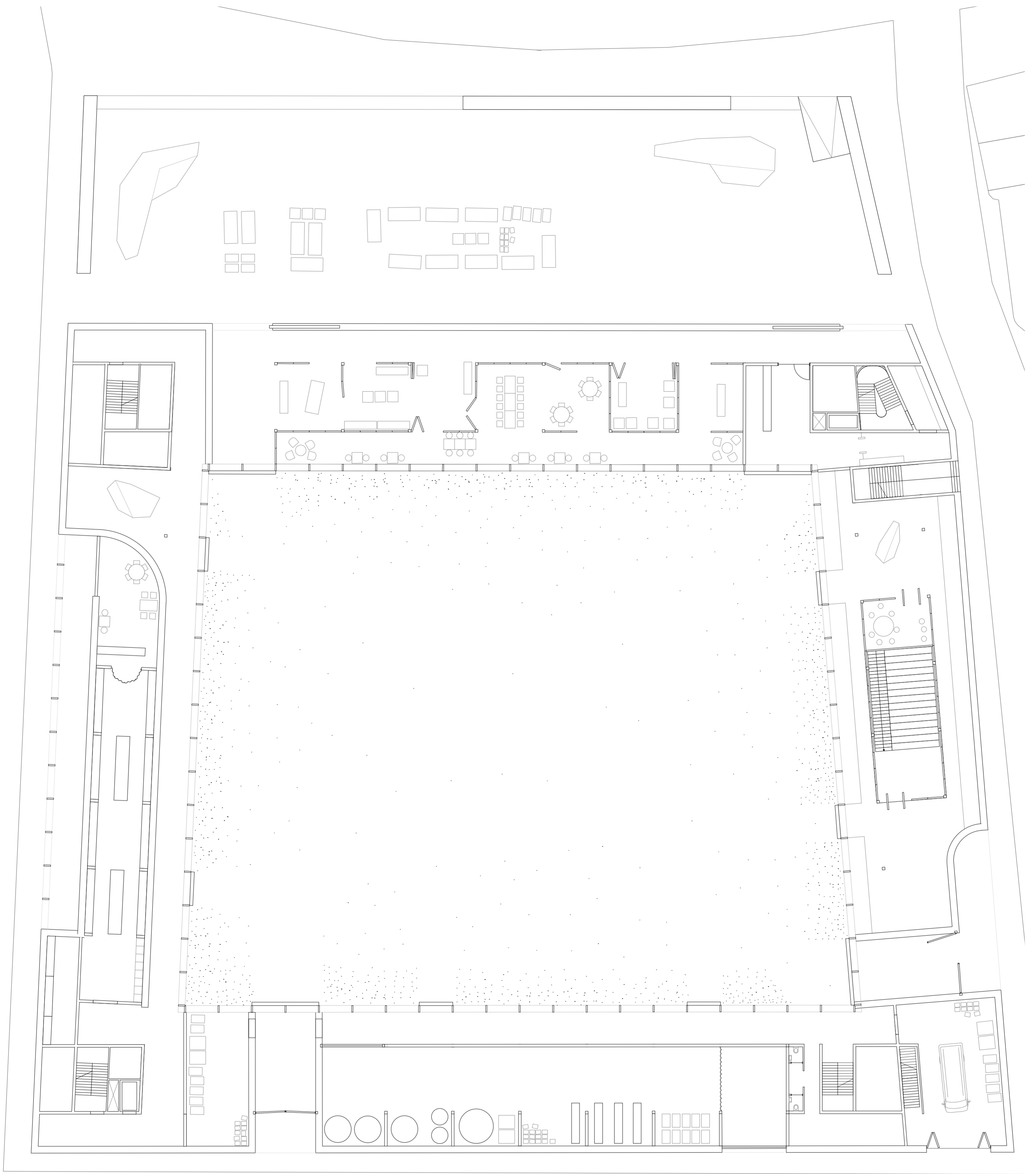
Daan Hammink
4334574

Tutors

Elise van Doorn
Roel van der Pas
Pierre Jennen

Msc 4

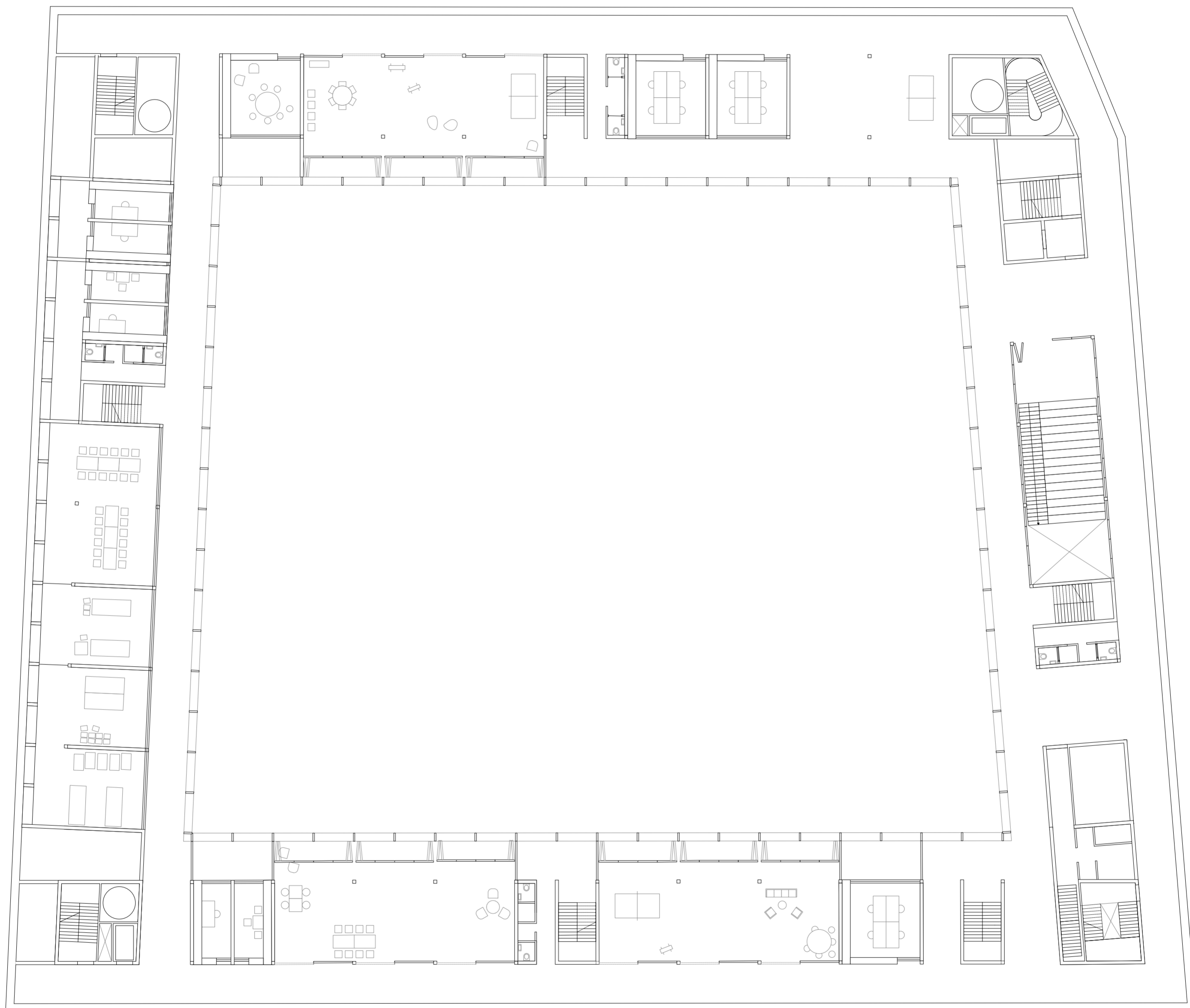
Explore Lab 29

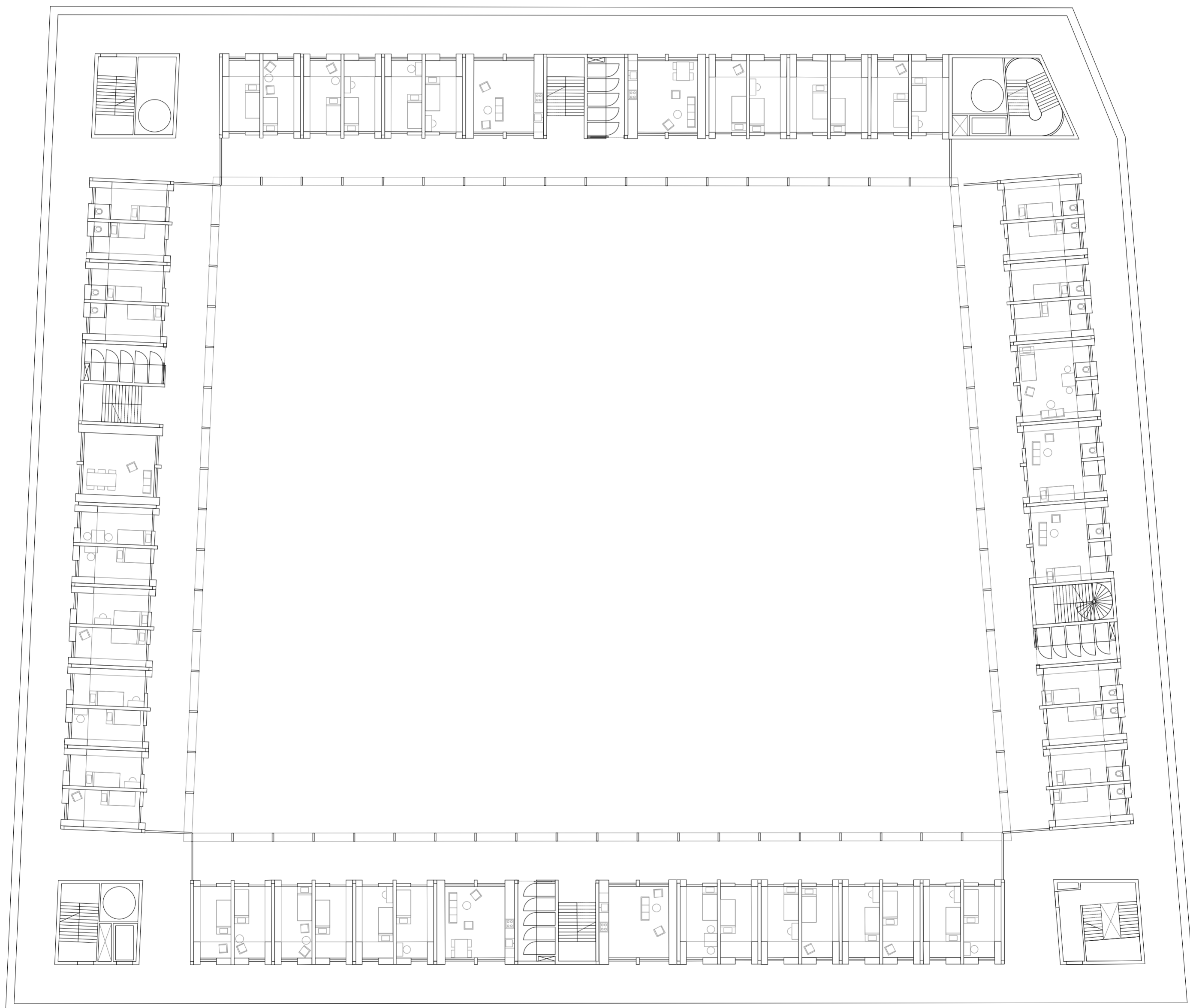


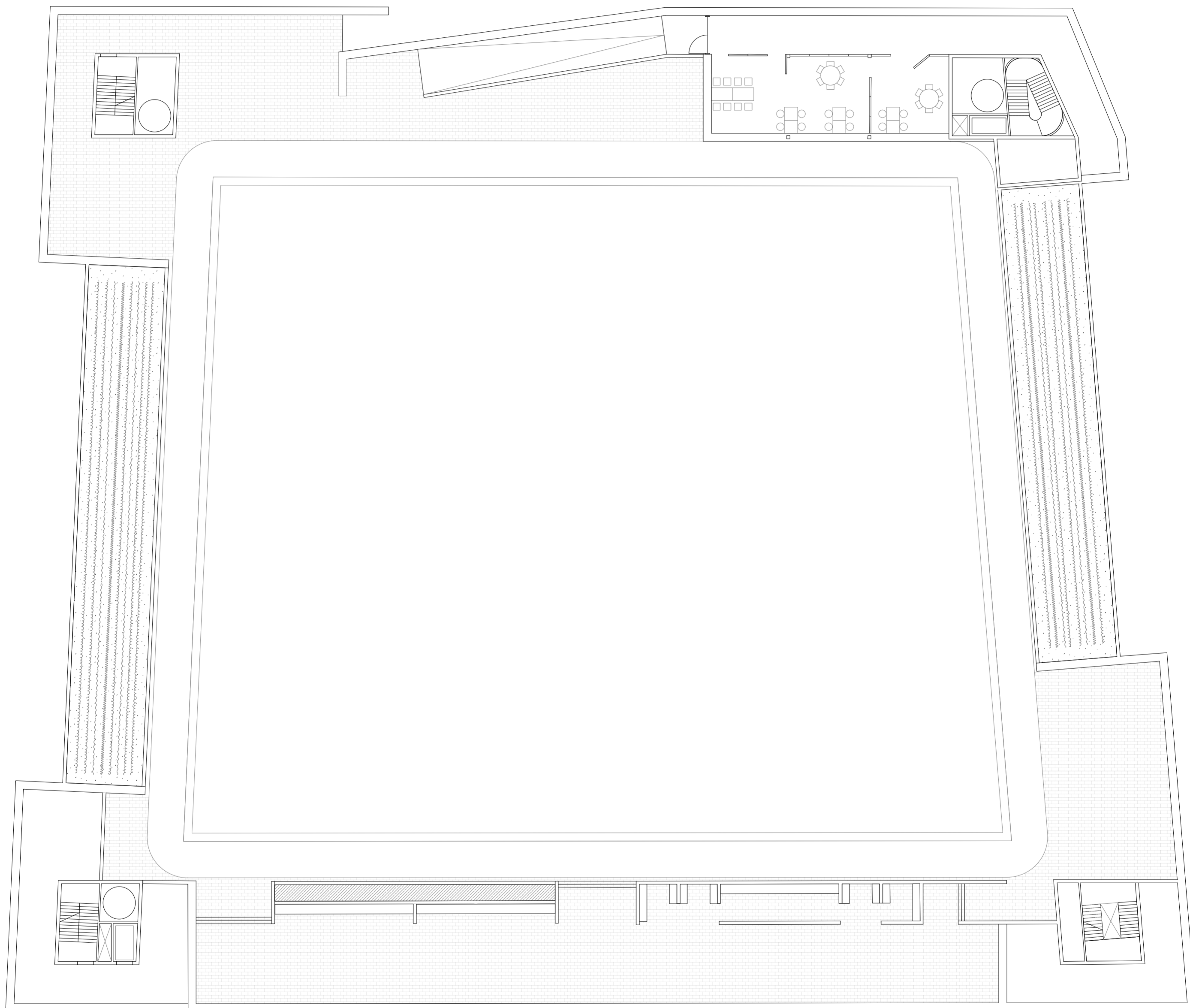
5m

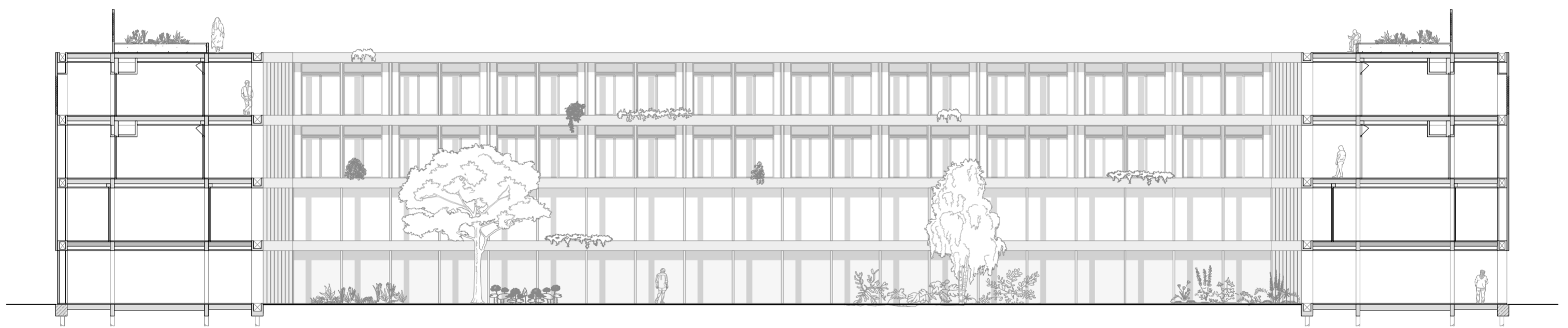


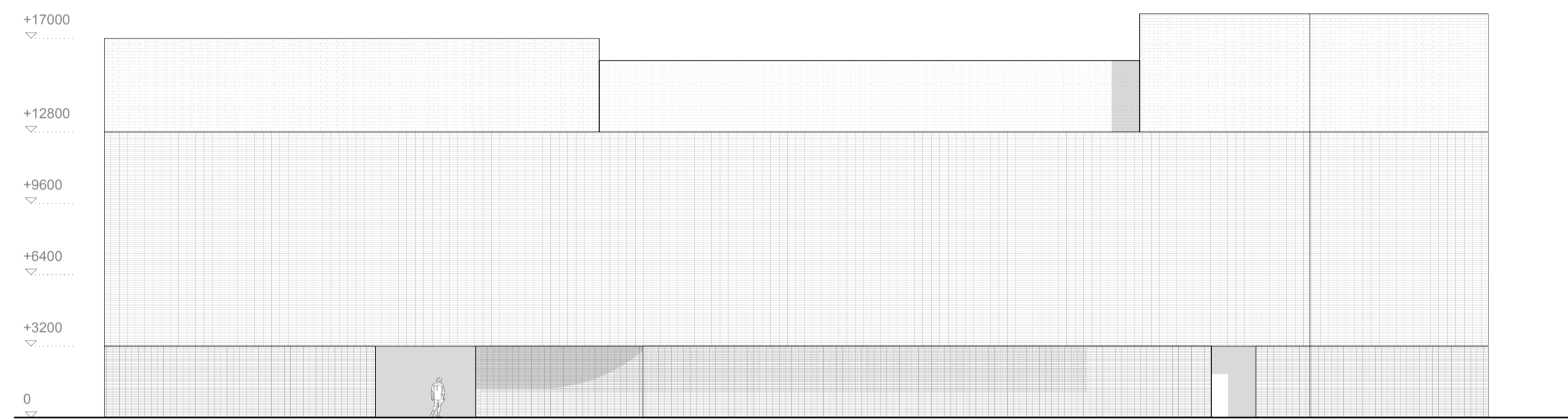
GROUND FLOOR | 1:200 | A2



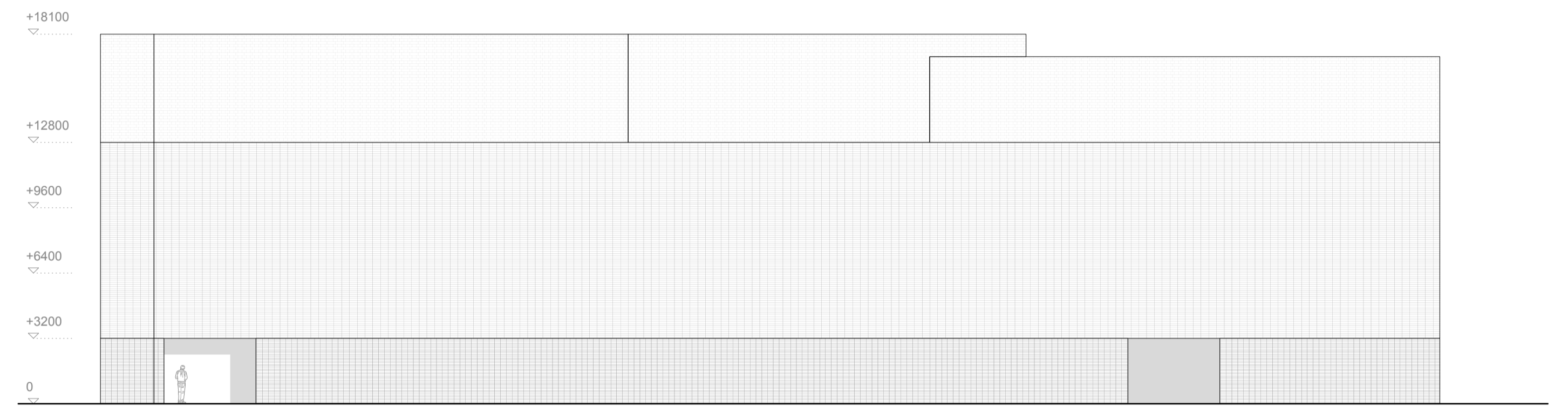




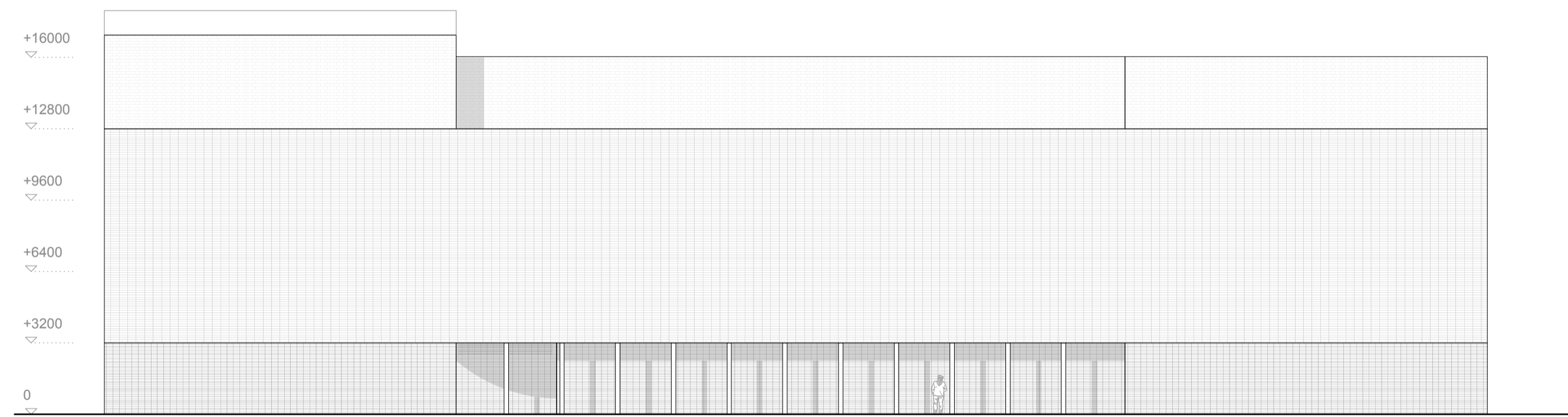




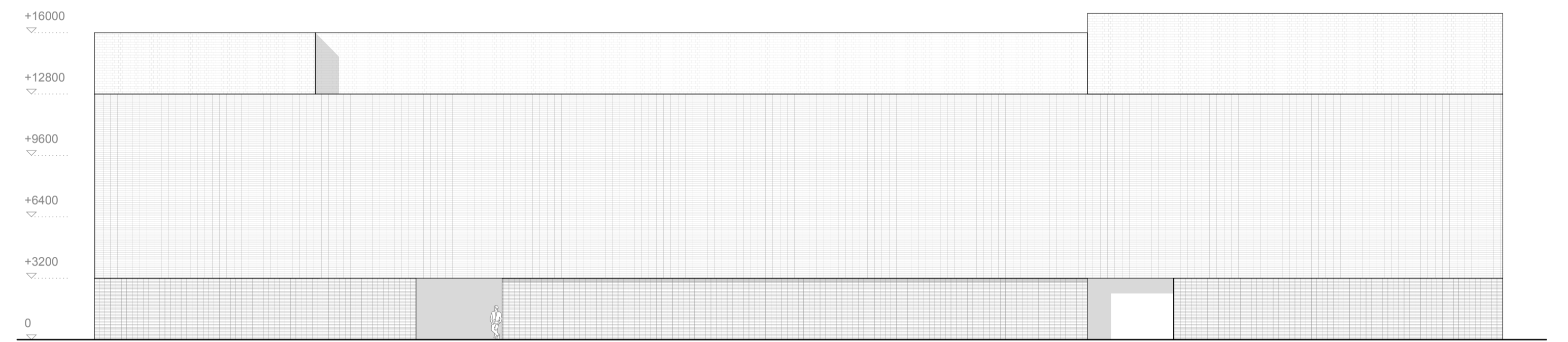
East - Ruitersstraat



South - Gedempte Zuiderdiep

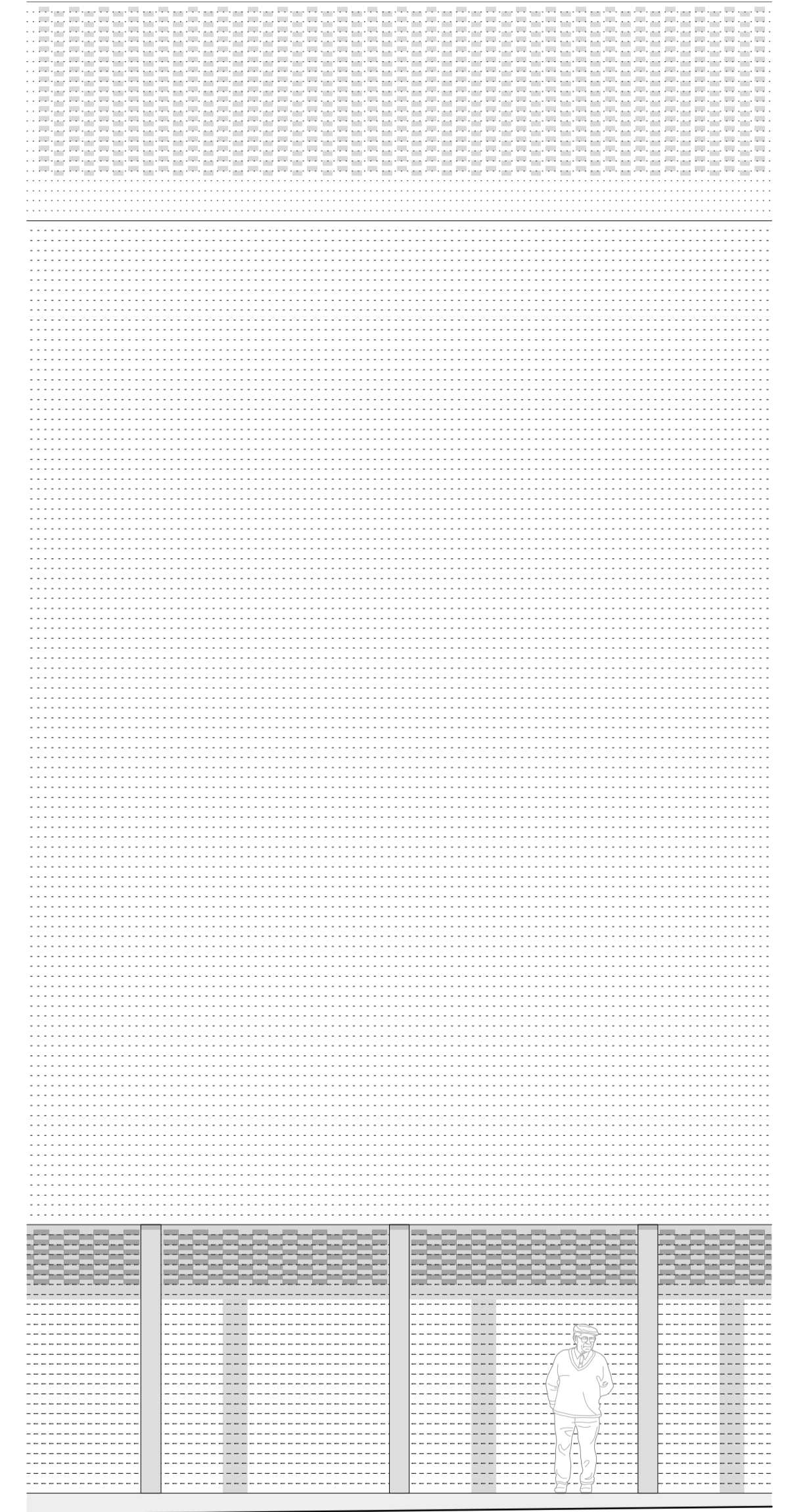
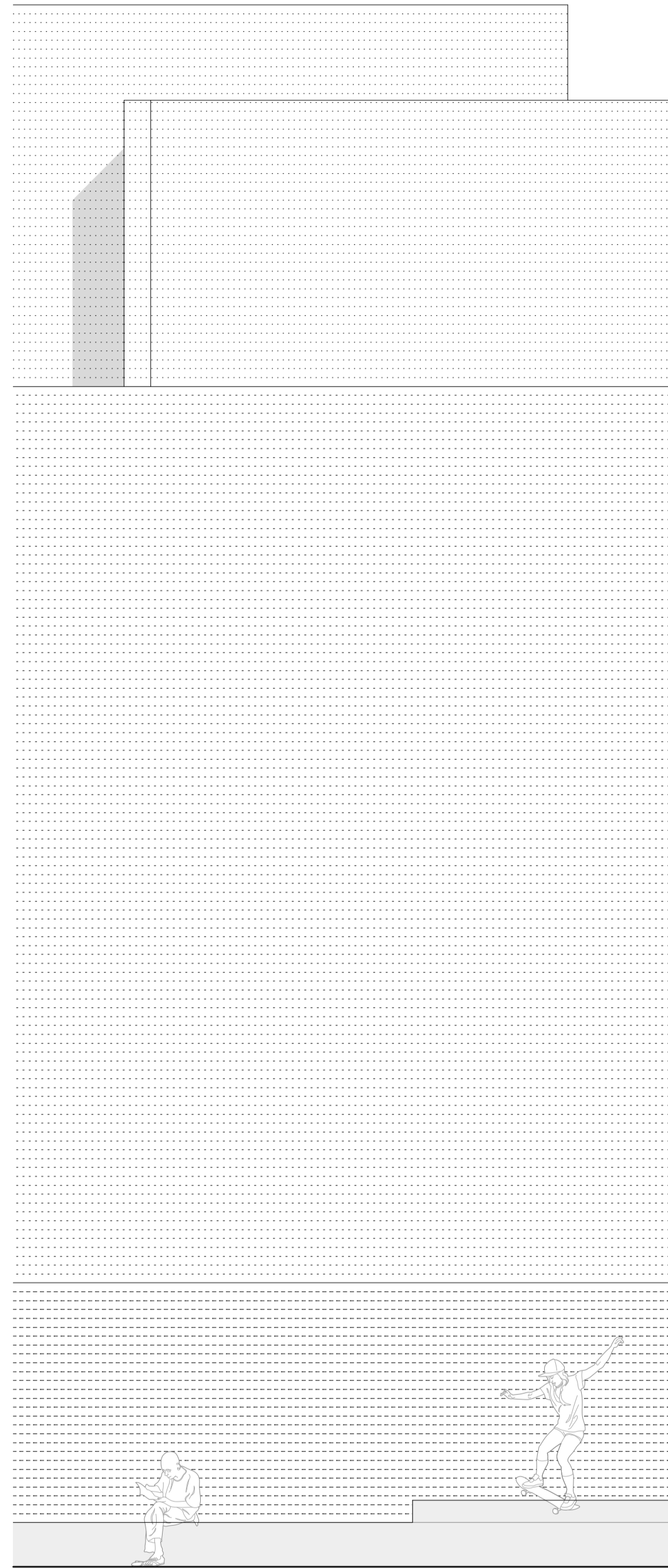
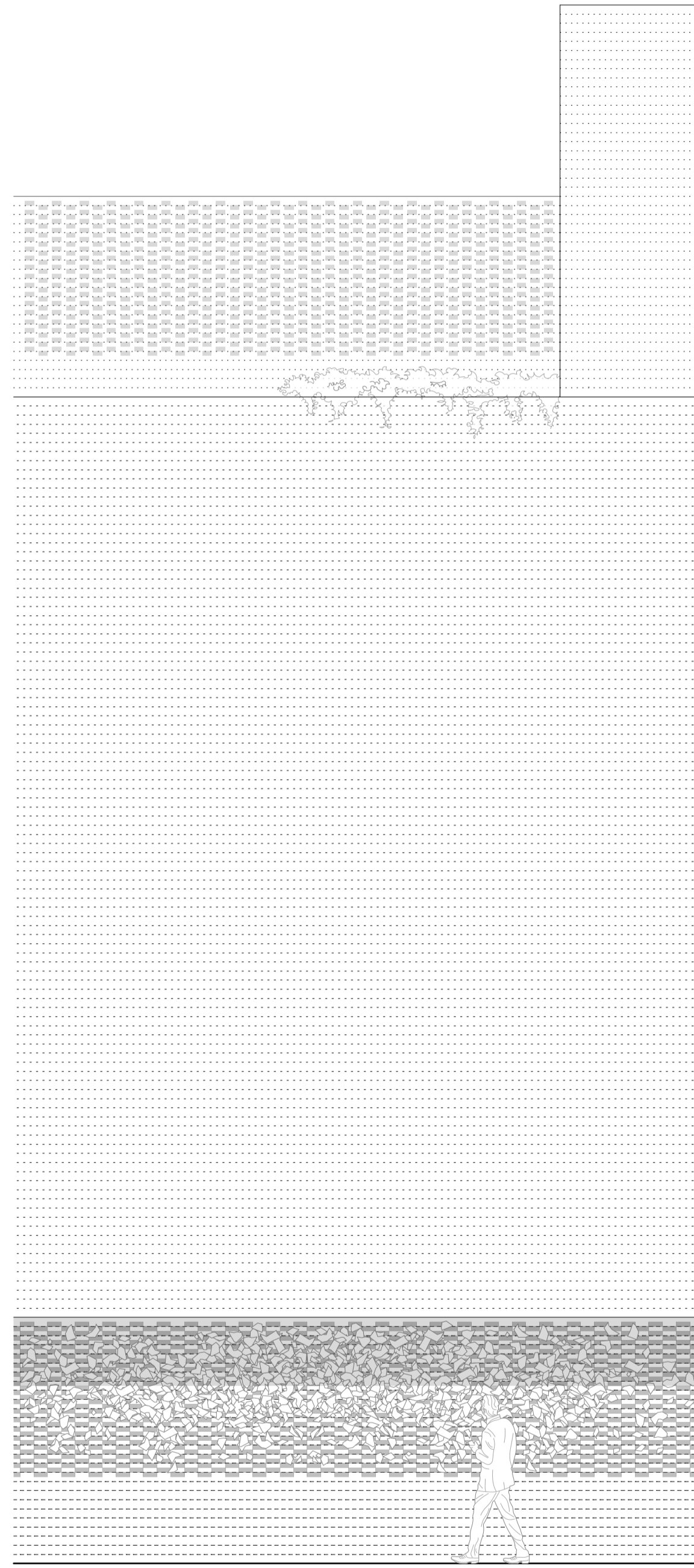
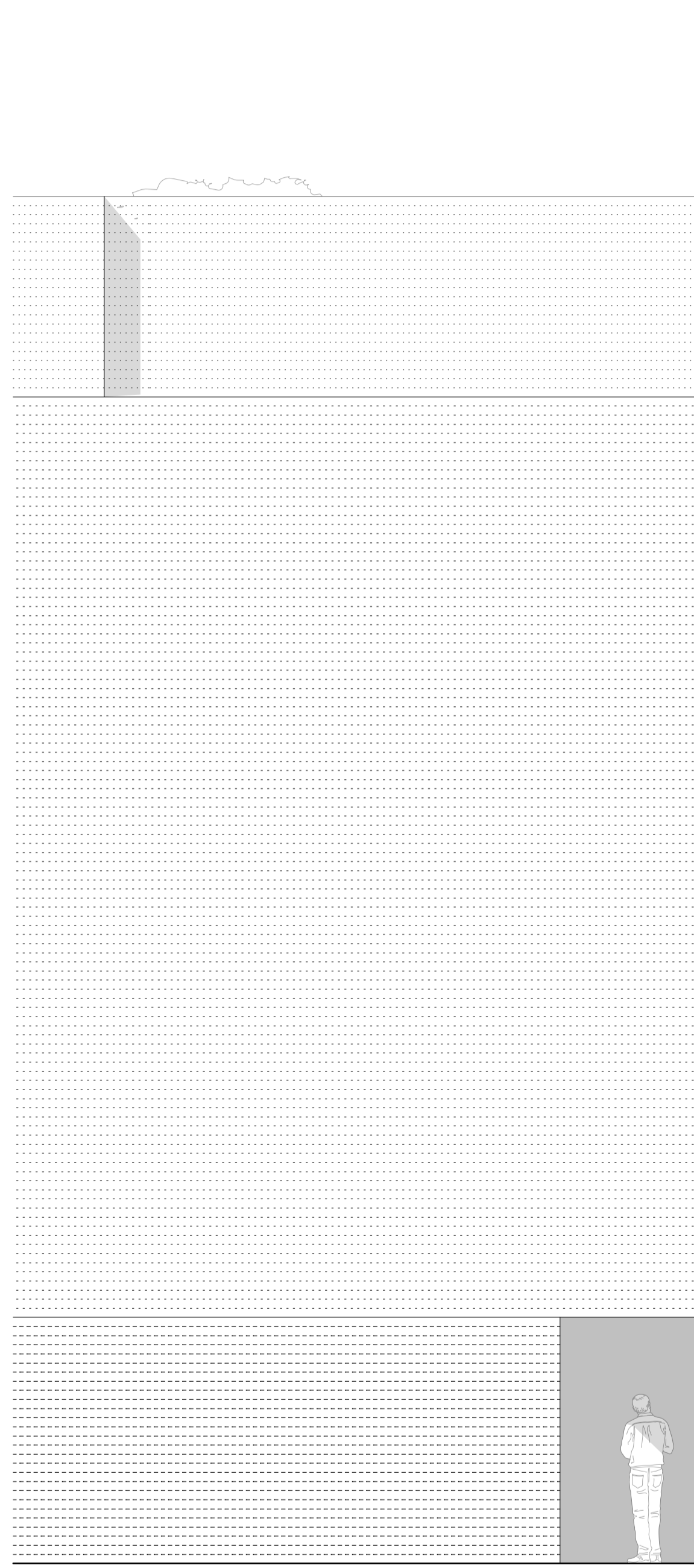


West - Ubbo Emmiusstraat



North - Coehoorsingel

+14400
▽
+12800
▽
+9600
▽
+6400
▽
+3200
▽
0
▽



+14400

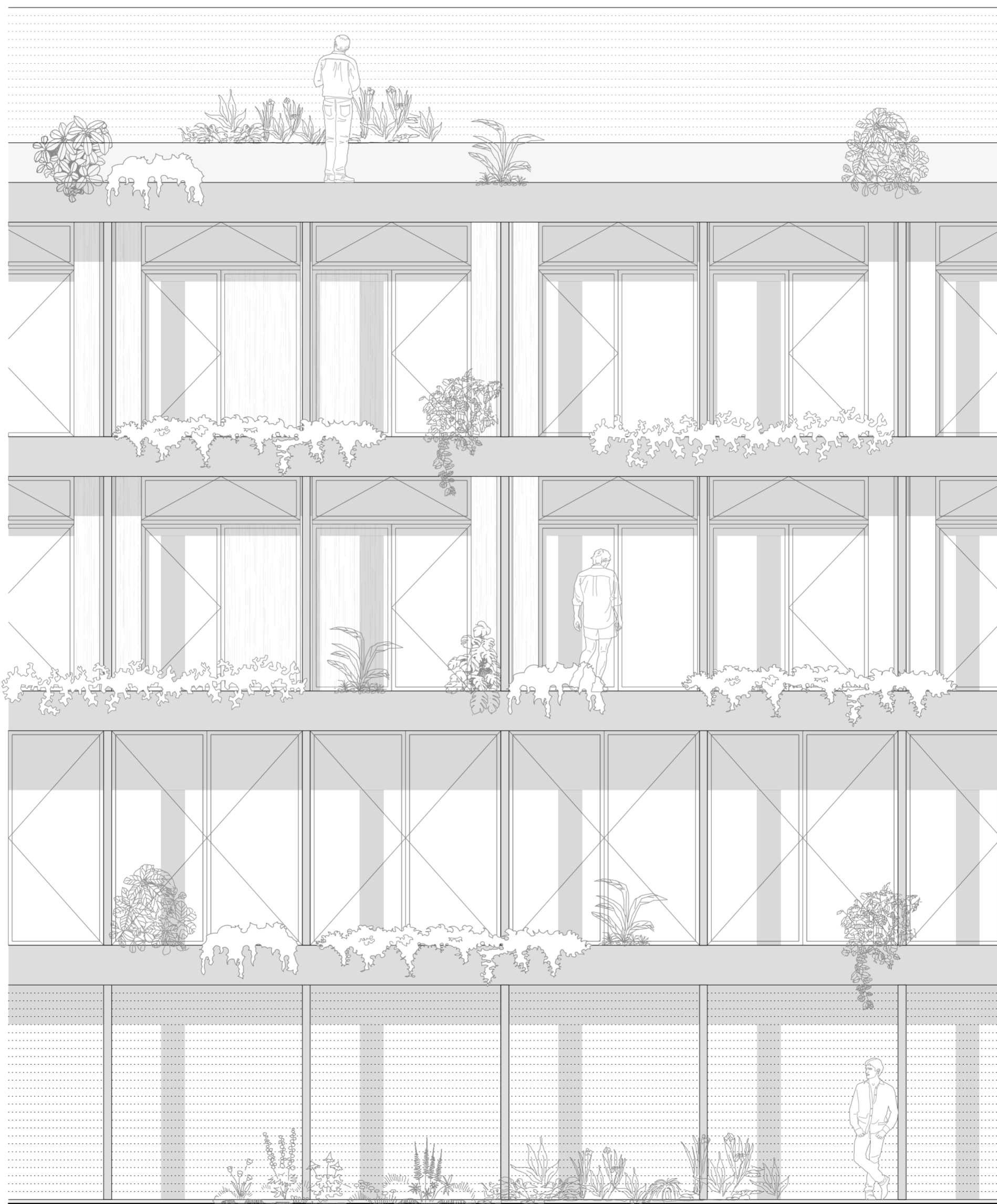
+12800

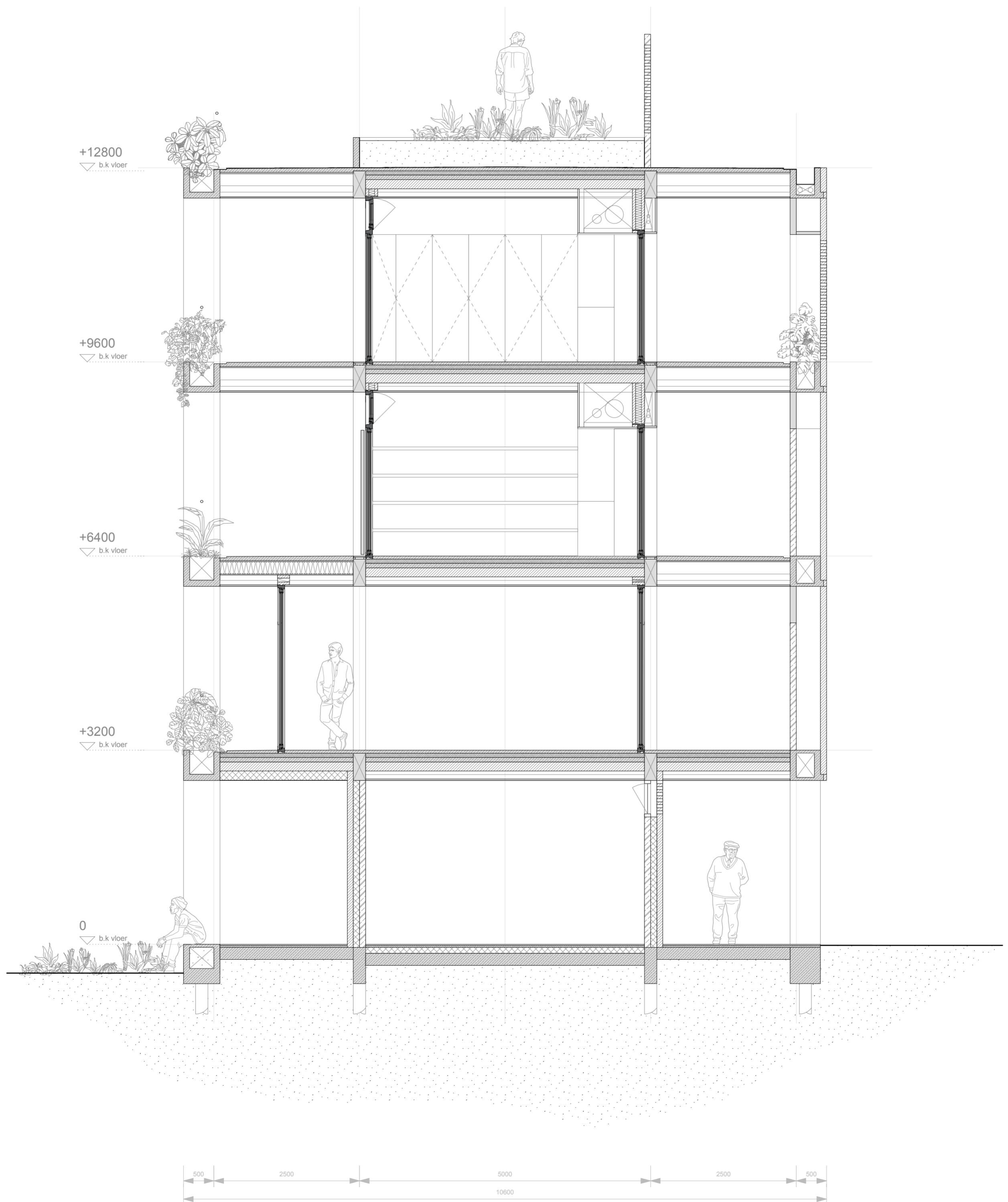
+9600

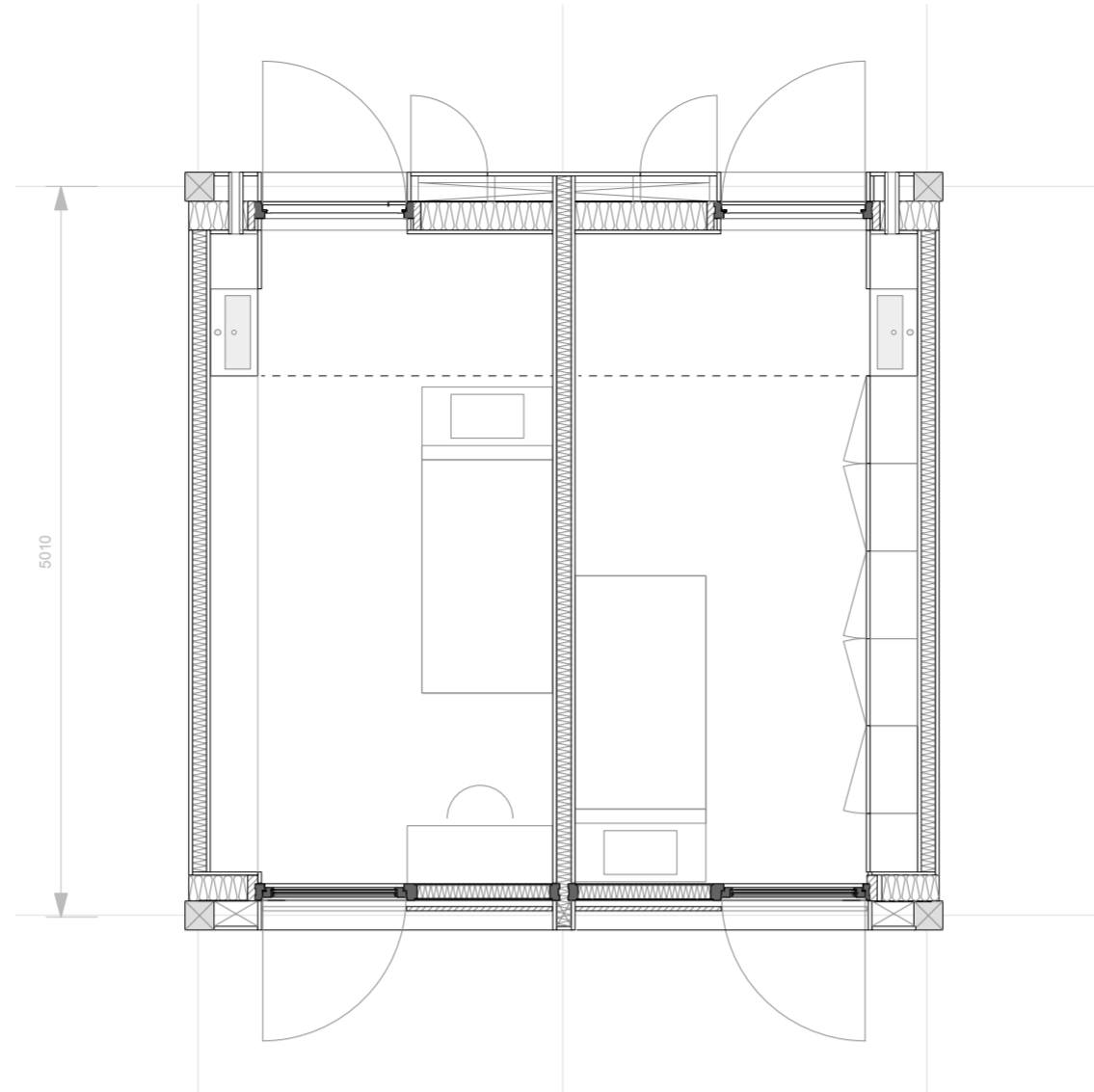
+6400

+3200

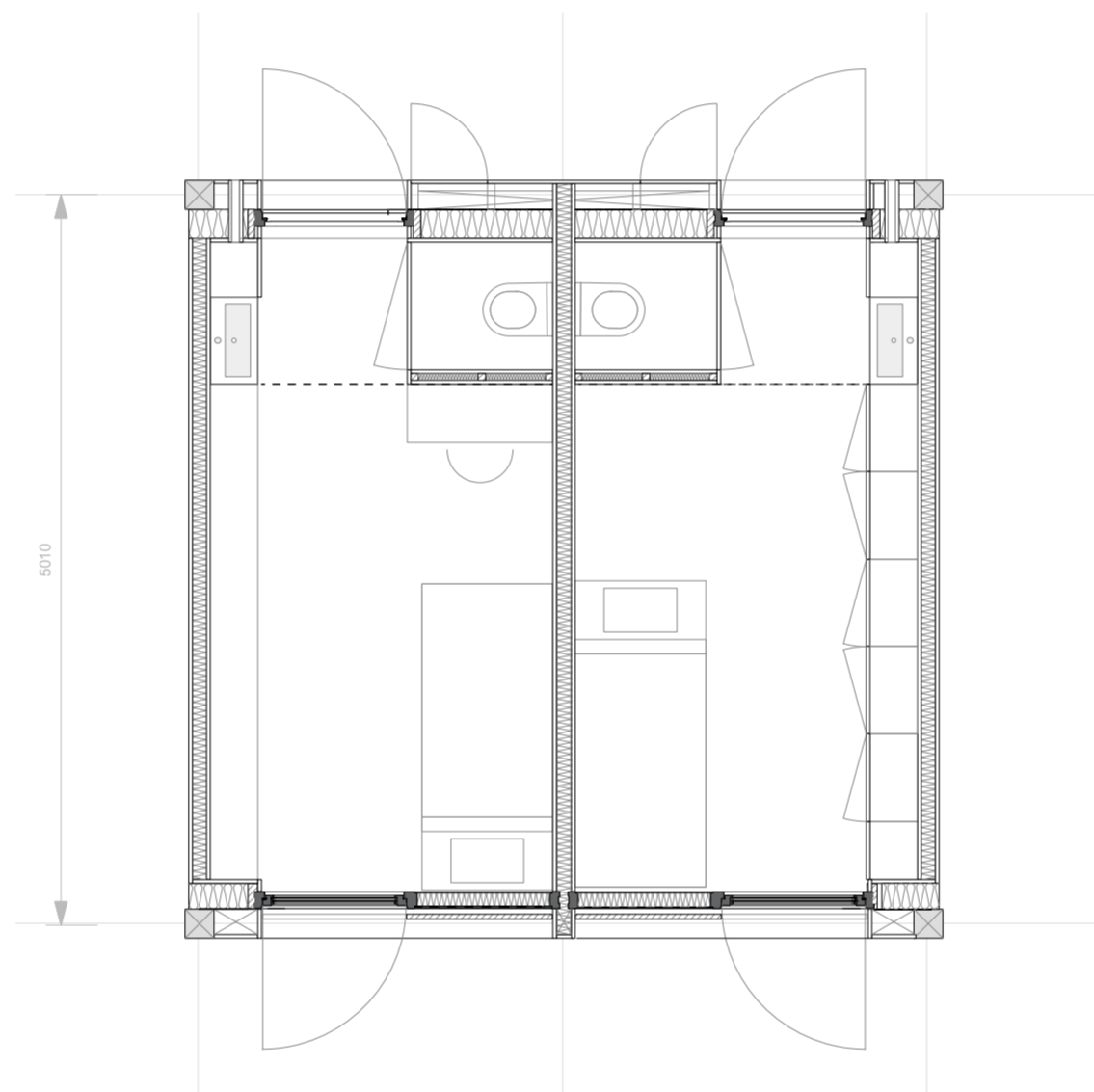
0



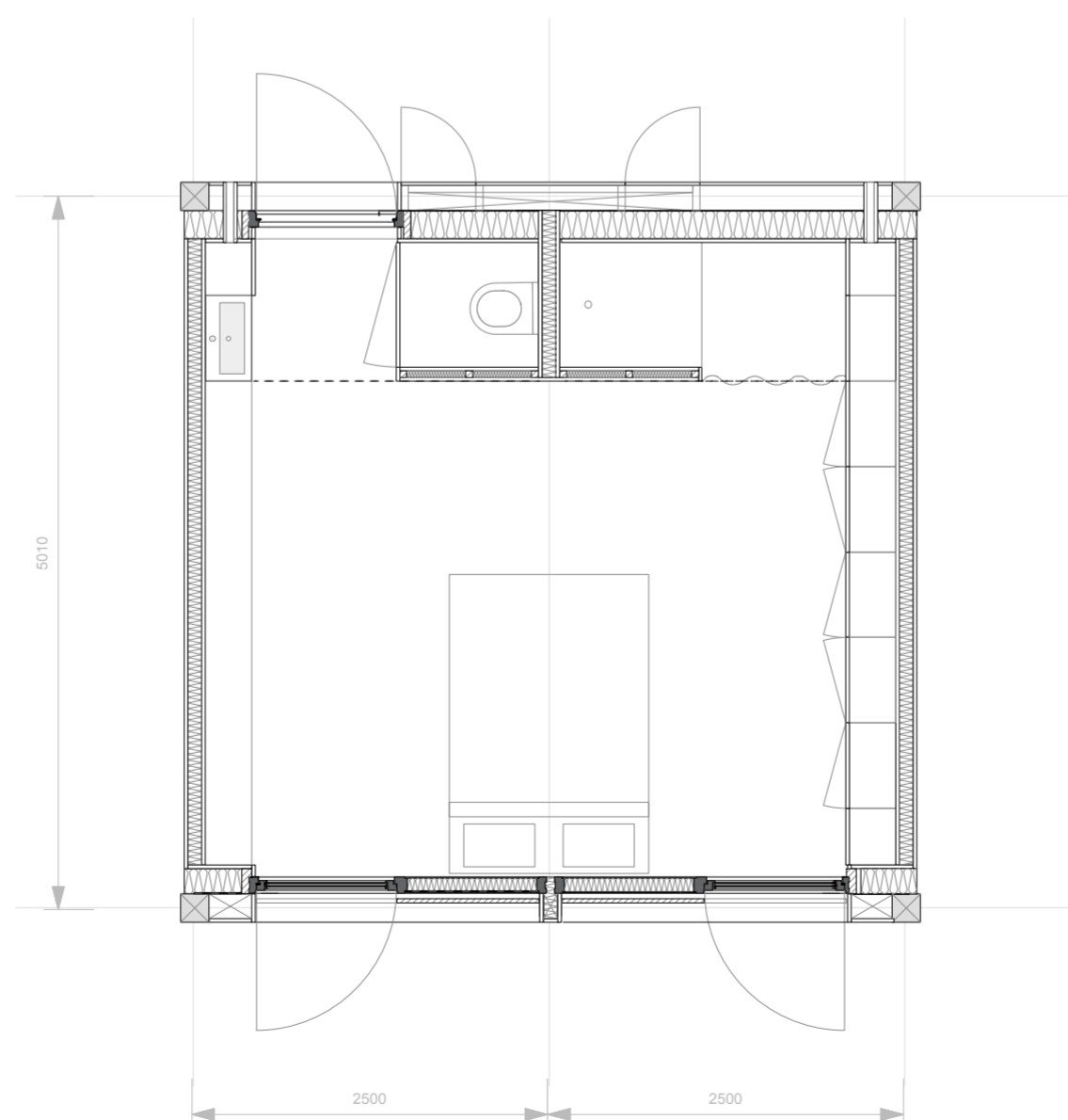




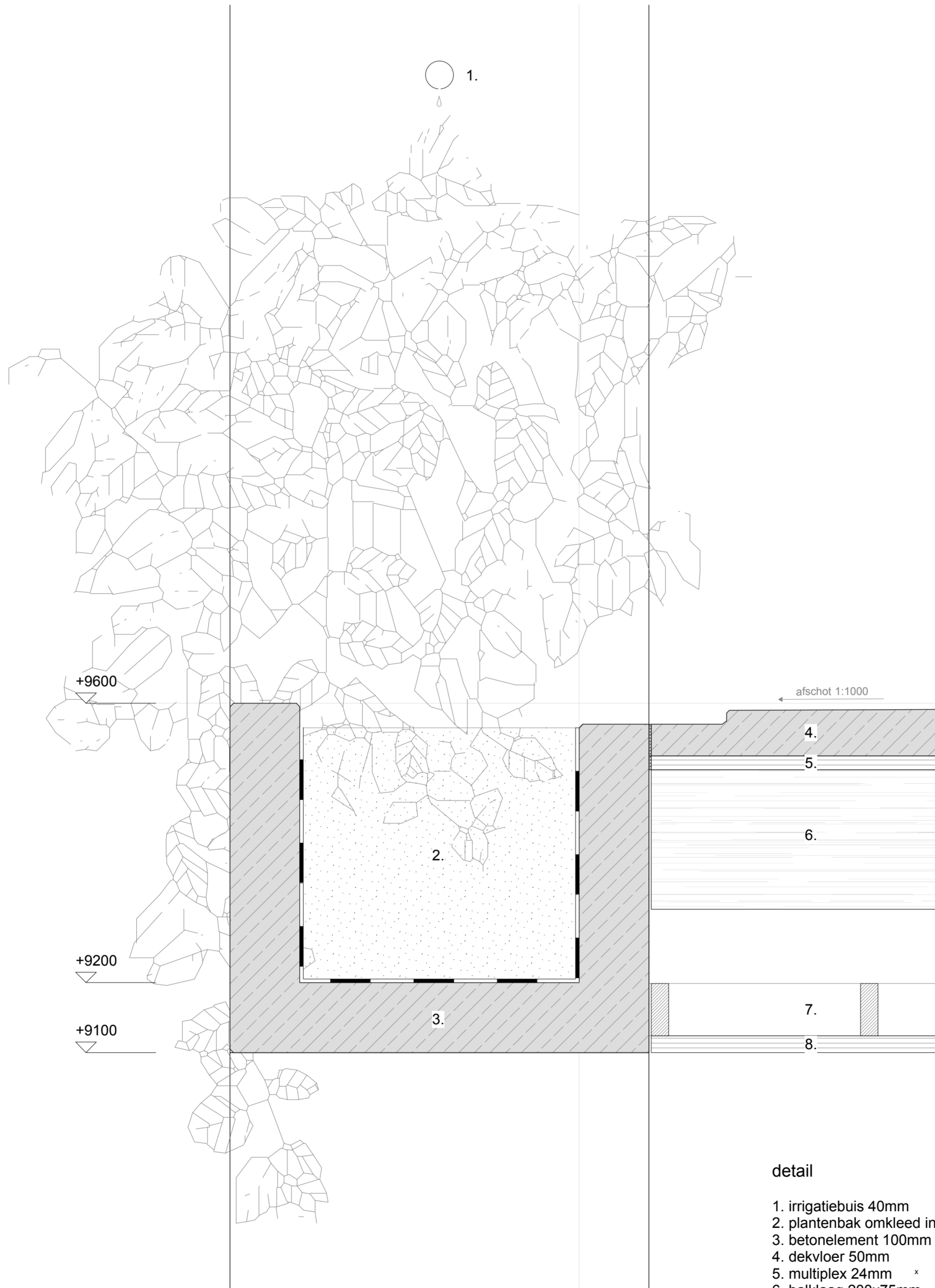
REGULAR



SOLITARY

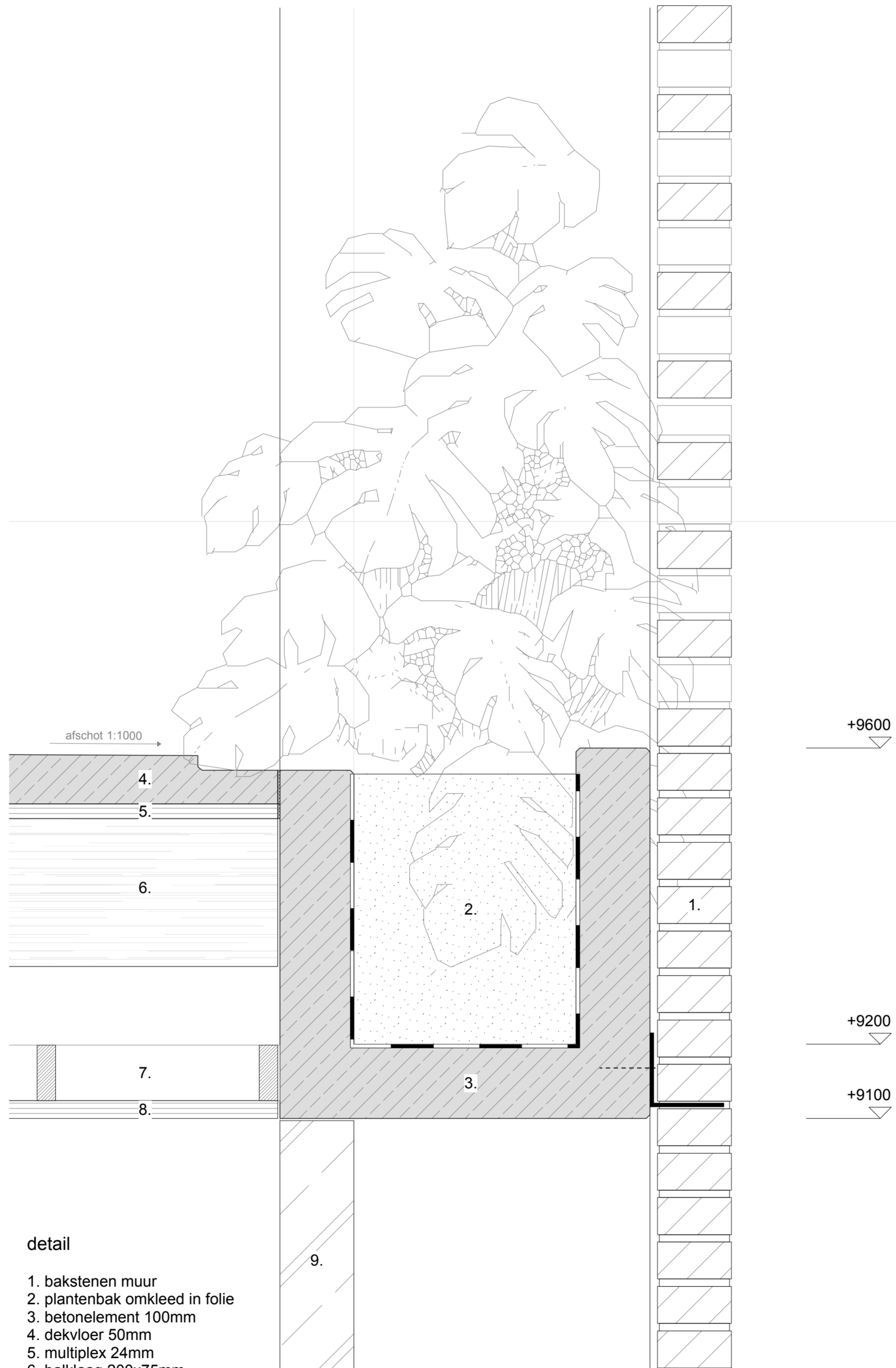


LARGE



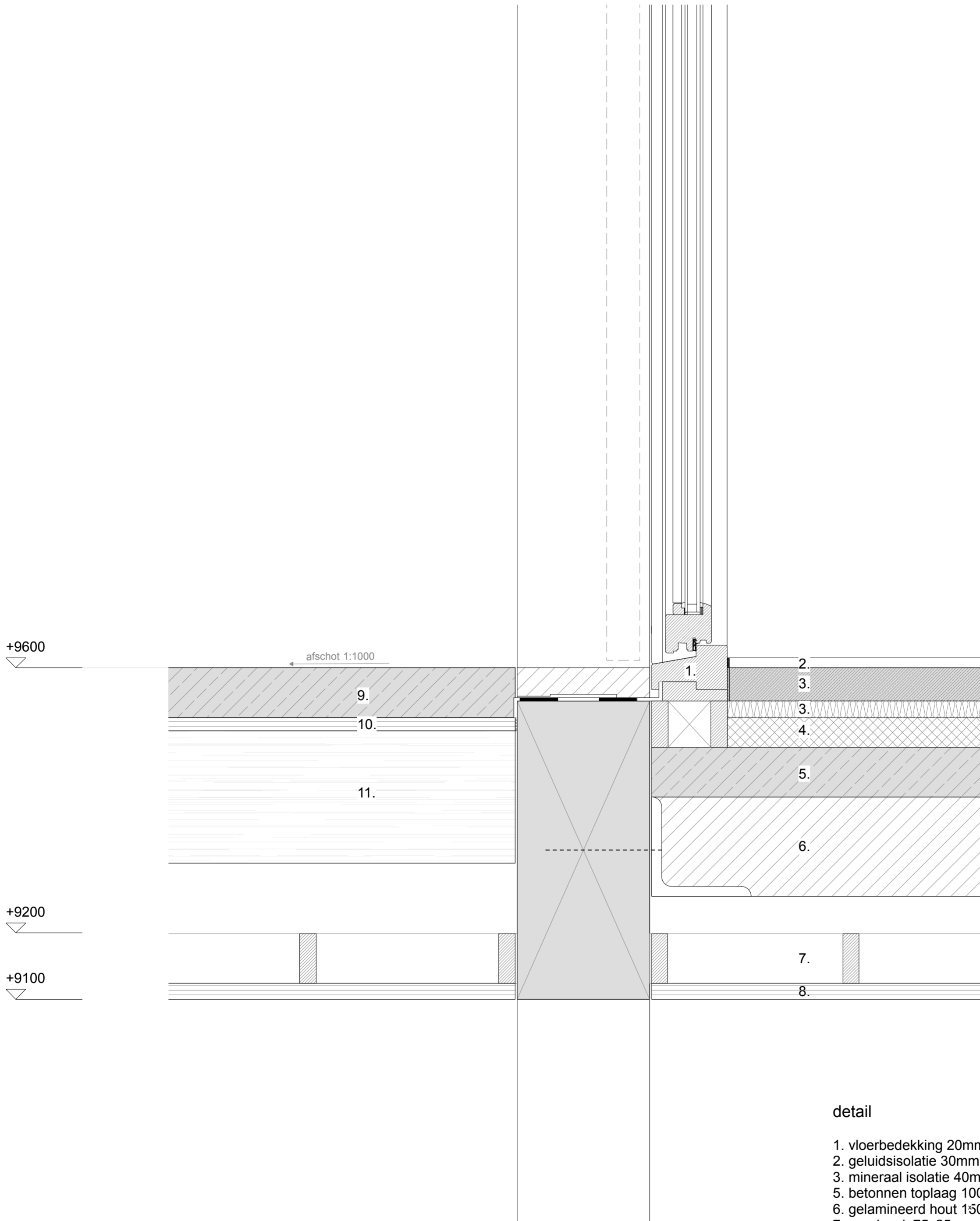
detail

1. irrigatiebuis 40mm
2. plantenbak omkleed in folie
3. betonelement 100mm
4. dekvloer 50mm
5. multiplex 24mm
6. balklaag 200x75mm
7. regelwerk 75x25mm
8. houten plafond 24mm



detail

1. bakstenen muur
2. plantenbak omkleed in folie
3. betonelement 100mm
4. dekvloer 50mm
5. multiplex 24mm
6. balklaag 200x75mm
7. regelwerk 75x25mm
8. houten plafond 24mm
9. betonnen wand



detail

- 1. vloerbedekking 20mm
- 2. geluidsisolatie 30mm
- 3. mineraal isolatie 40mm
- 5. betonnen toplaag 100mm
- 6. gelamineerd hout 150mm
- 7. regelwerk 75x25mm
- 8. houten plafond 24mm
- 9. dekvloer 50mm
- 10. multiplex 24mm
- 11. balklaag 200x75mm