

# ENSEMBLE

Inclusive Urban Renewal: A Human-Centric Approach to the Blikfabriek  
Site

20/06/2025

Axelle Maassen 5076587

MSc 3/4 Urban Architecture

Sam Stalker | Eireen Schreurs | Anèt Meijer





Ben, interviewed at his garage



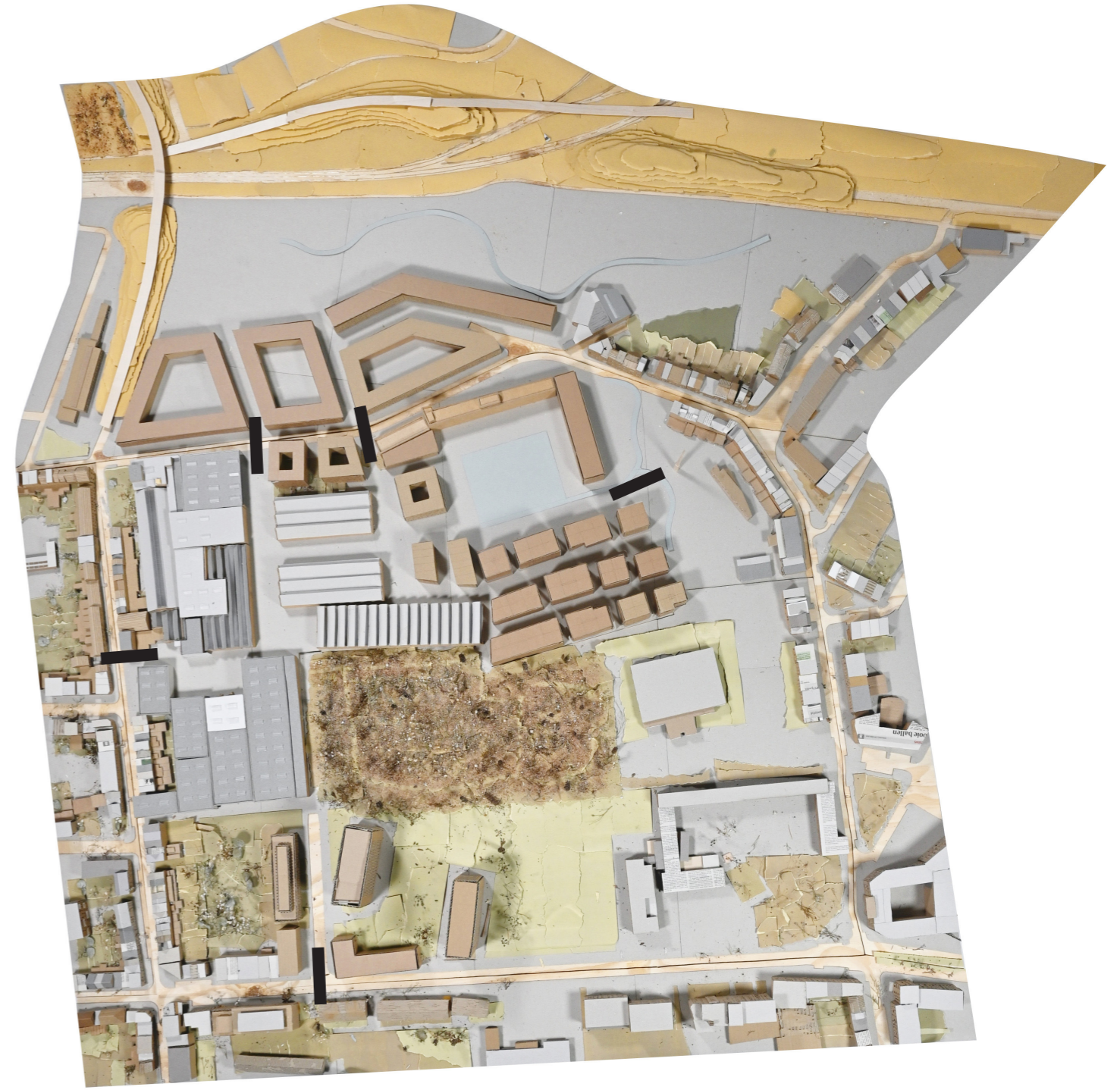
group of people interviewed at SAAMO community center



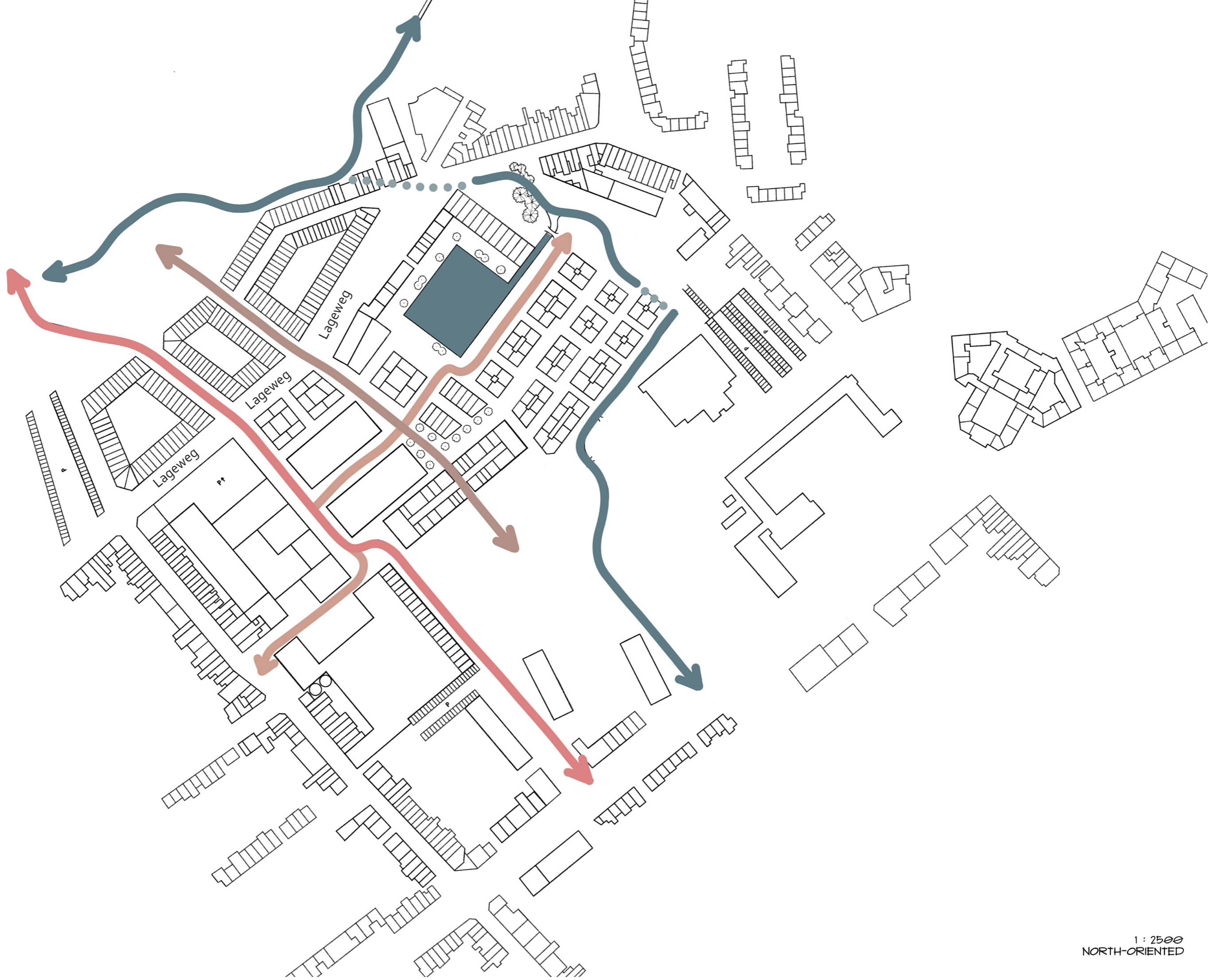
Bavo, interviewed at his home



Current site of the Blikfabriek in Hoboken



The site transformed in our masterplan



GROUND FLOOR

- RESIDENTIAL
- URBAN FACILITIES
- LOCAL ECONOMIC FACILITIES
- INDUSTRIAL FACILITIES

> 600  
11.360 M2







Many places are gray and full of trash. Very unattractive

In 4 years I have never seen a girl enter

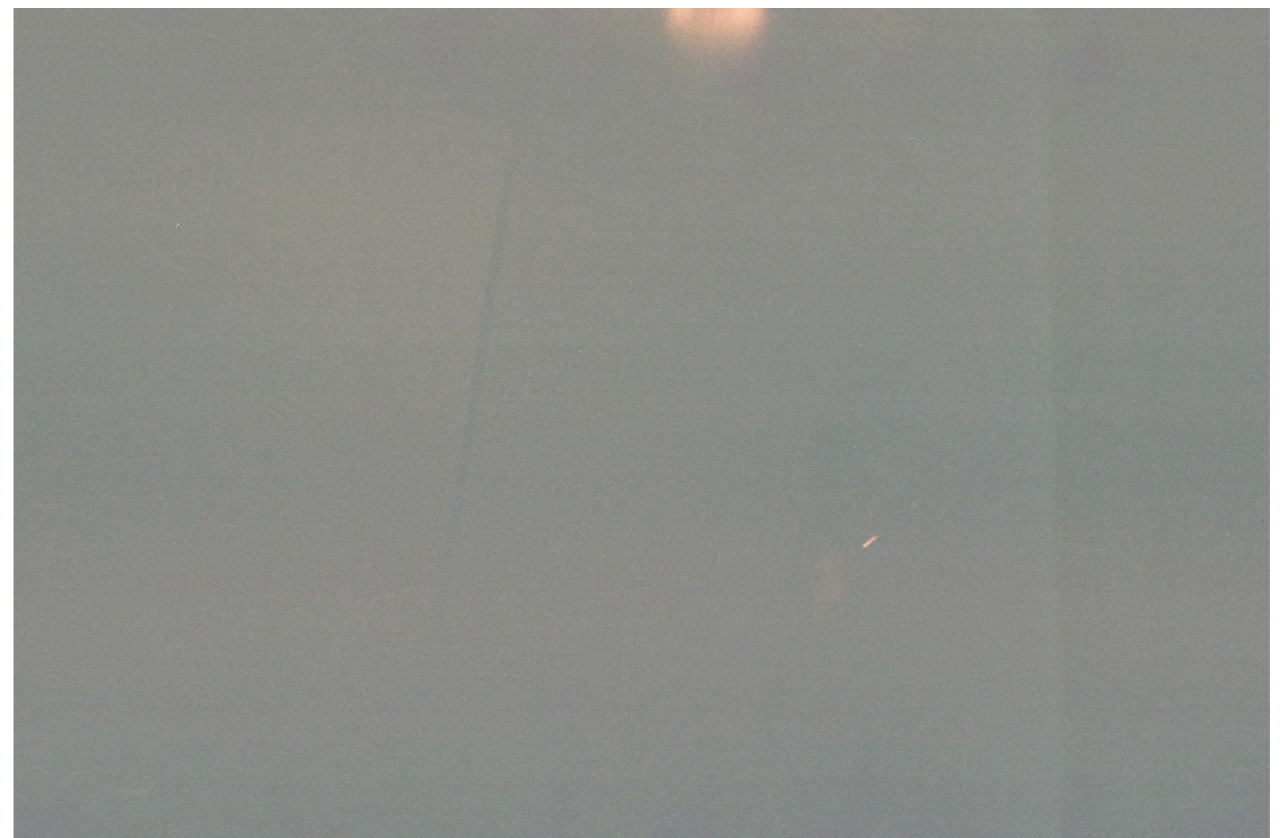
We can't go to kielpark alone. It would be very inappropriate for us girls.

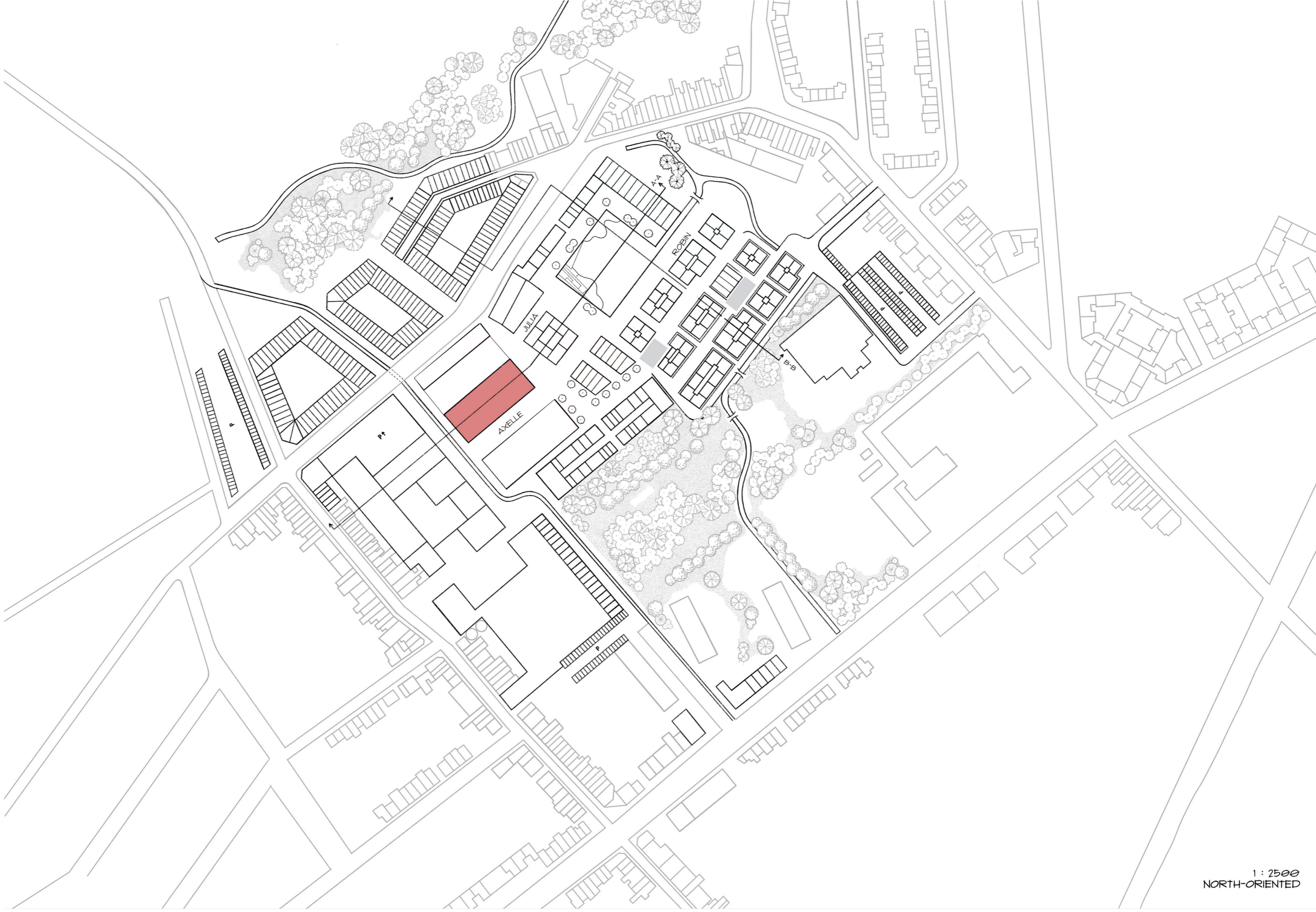


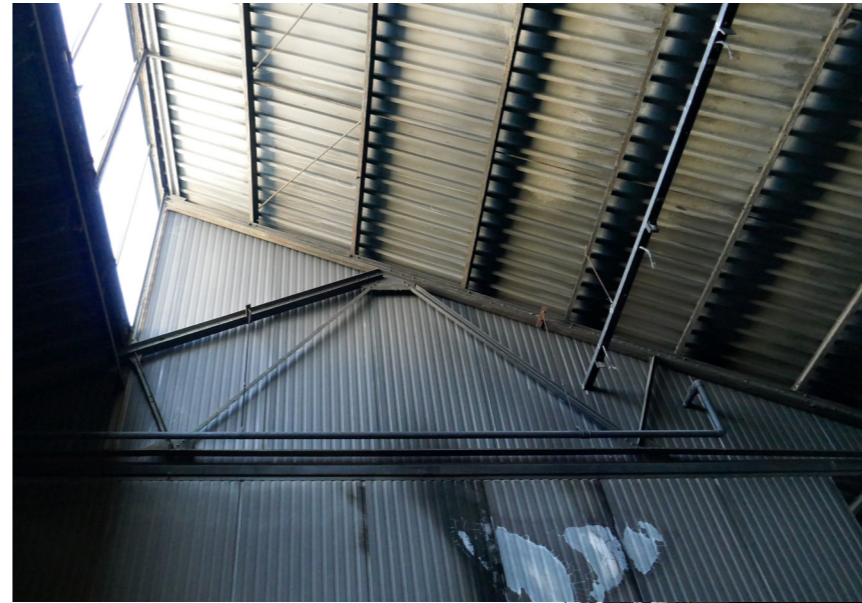
I love this place!  
It gives me a place  
to meet girls like me!

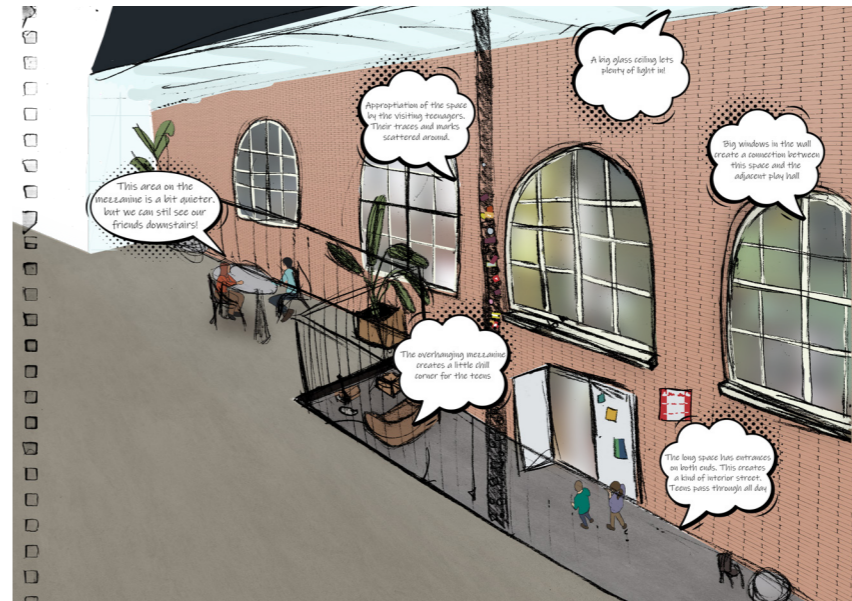
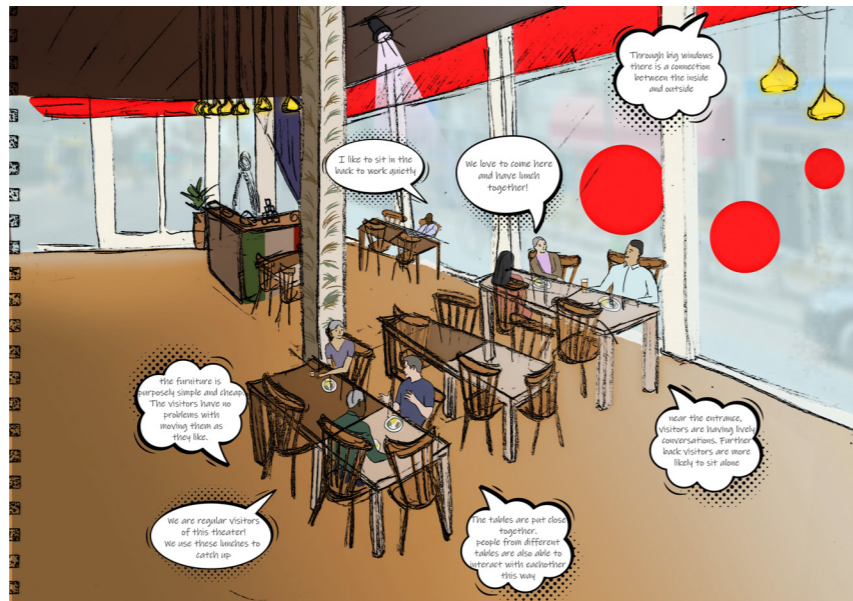
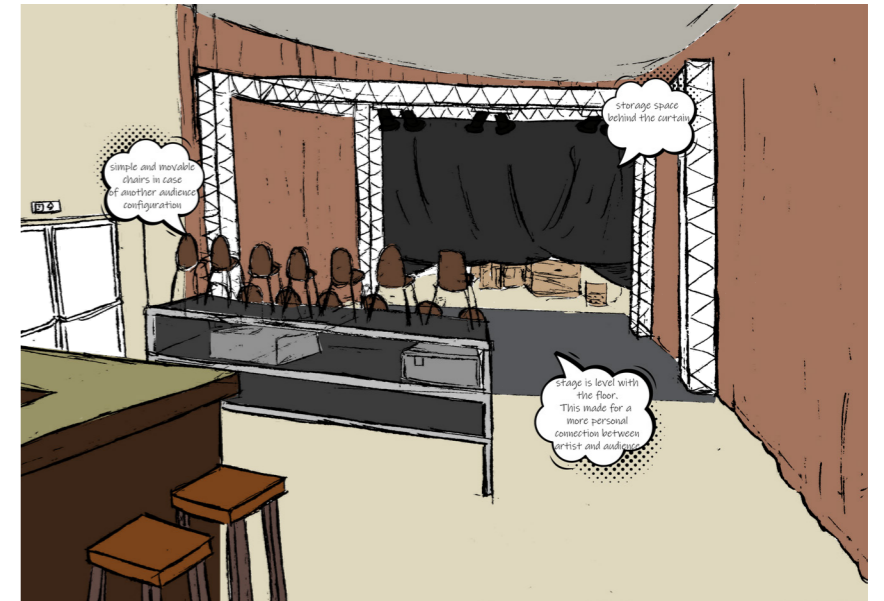
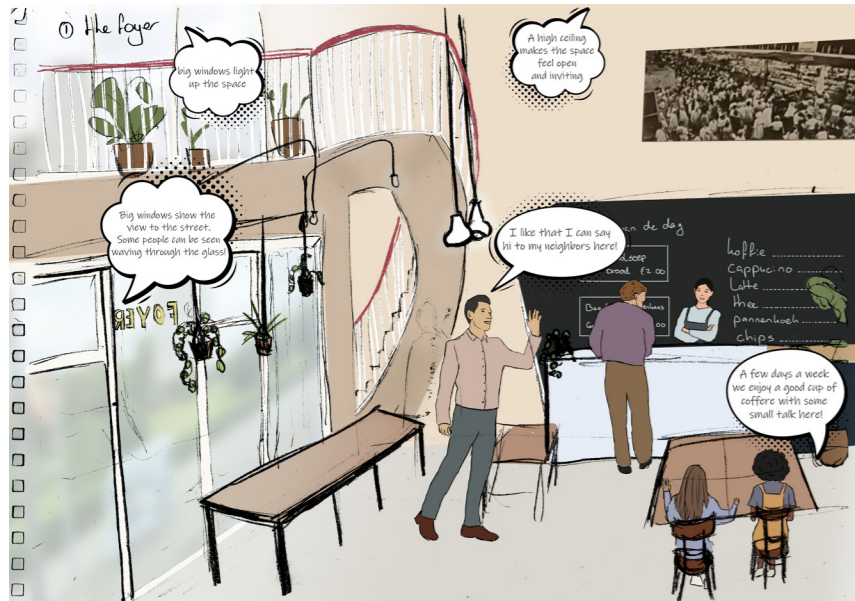
there is nothing  
to do in the area!  
Here we can finally  
take part in activities!

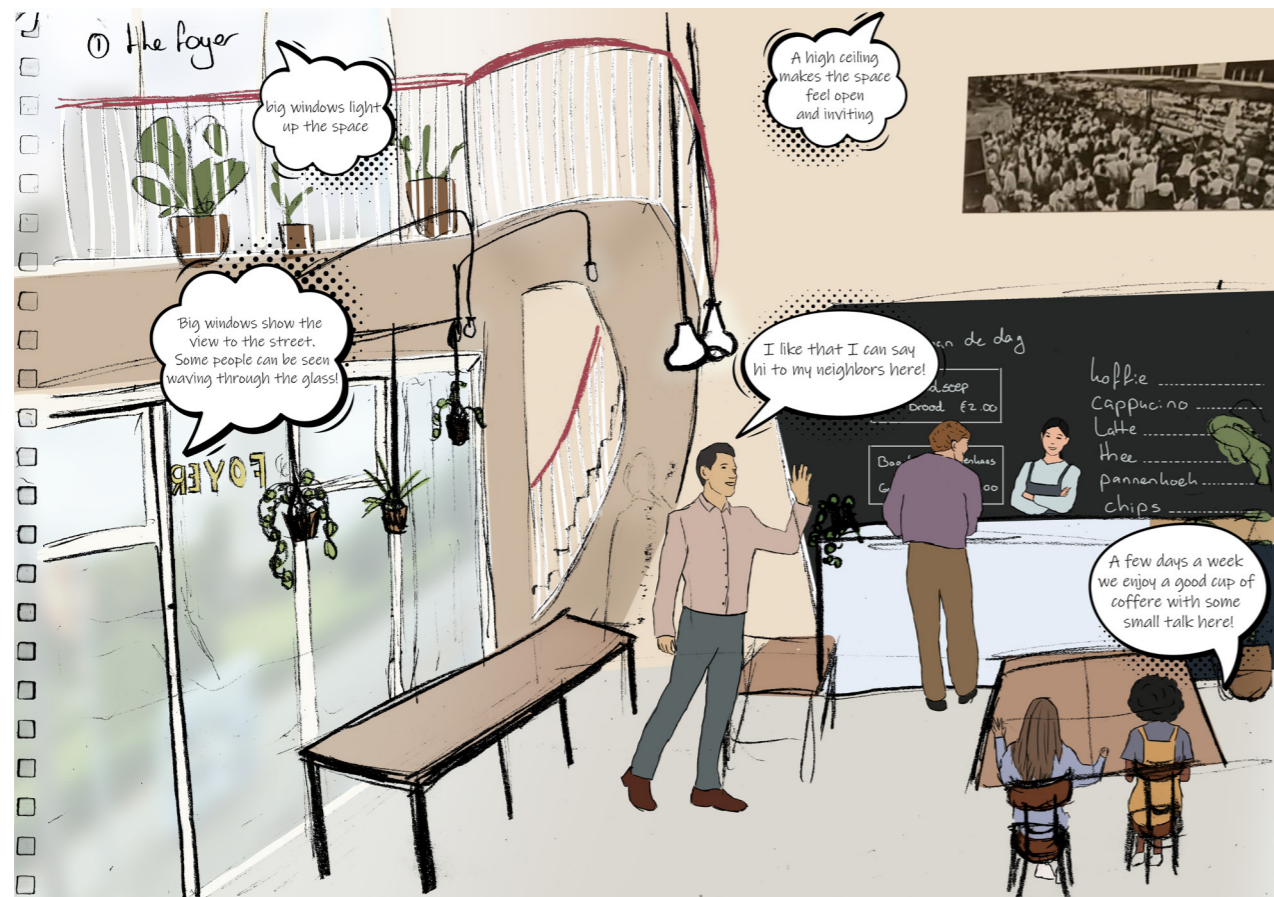
In the weekend  
I like to go shopping  
with my friends



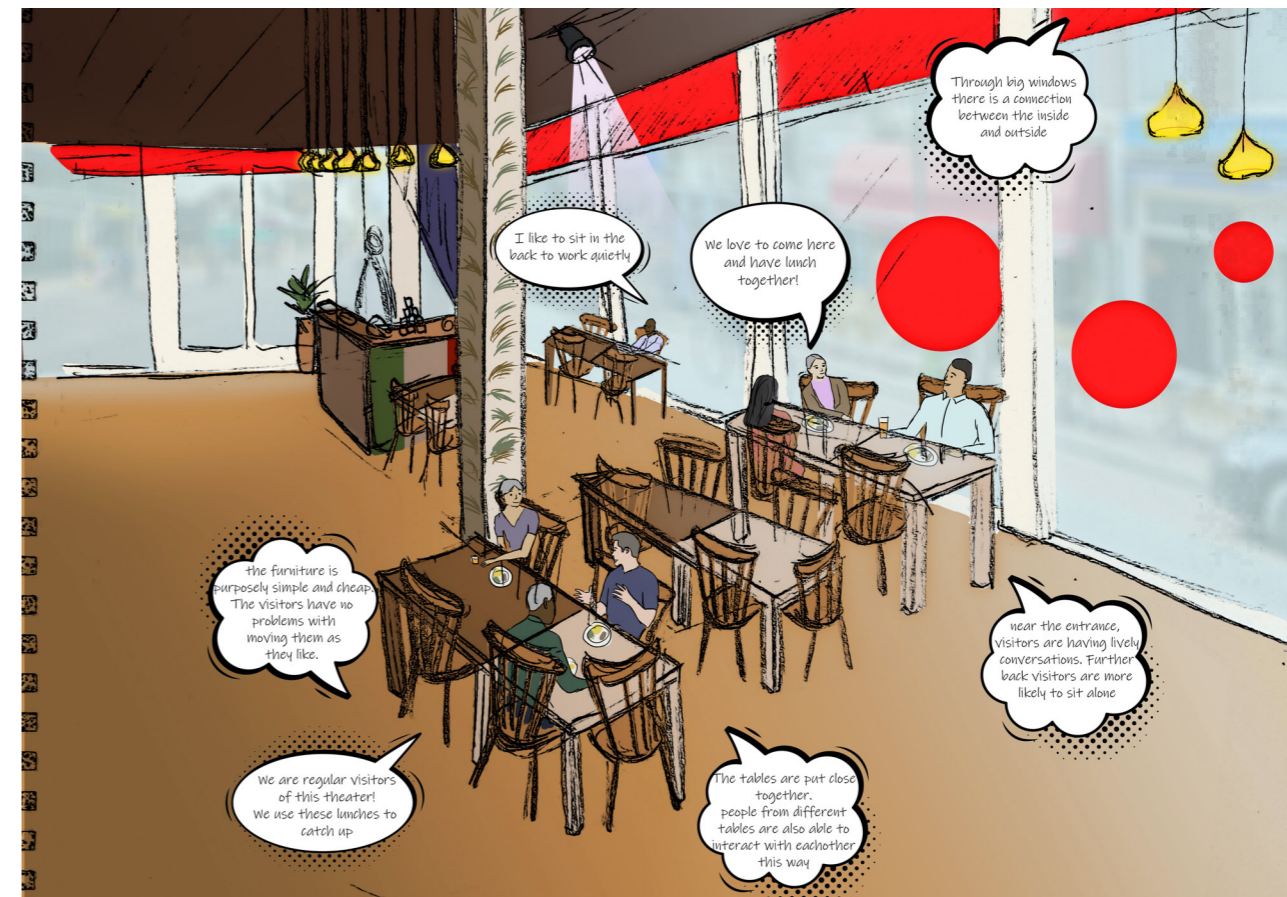








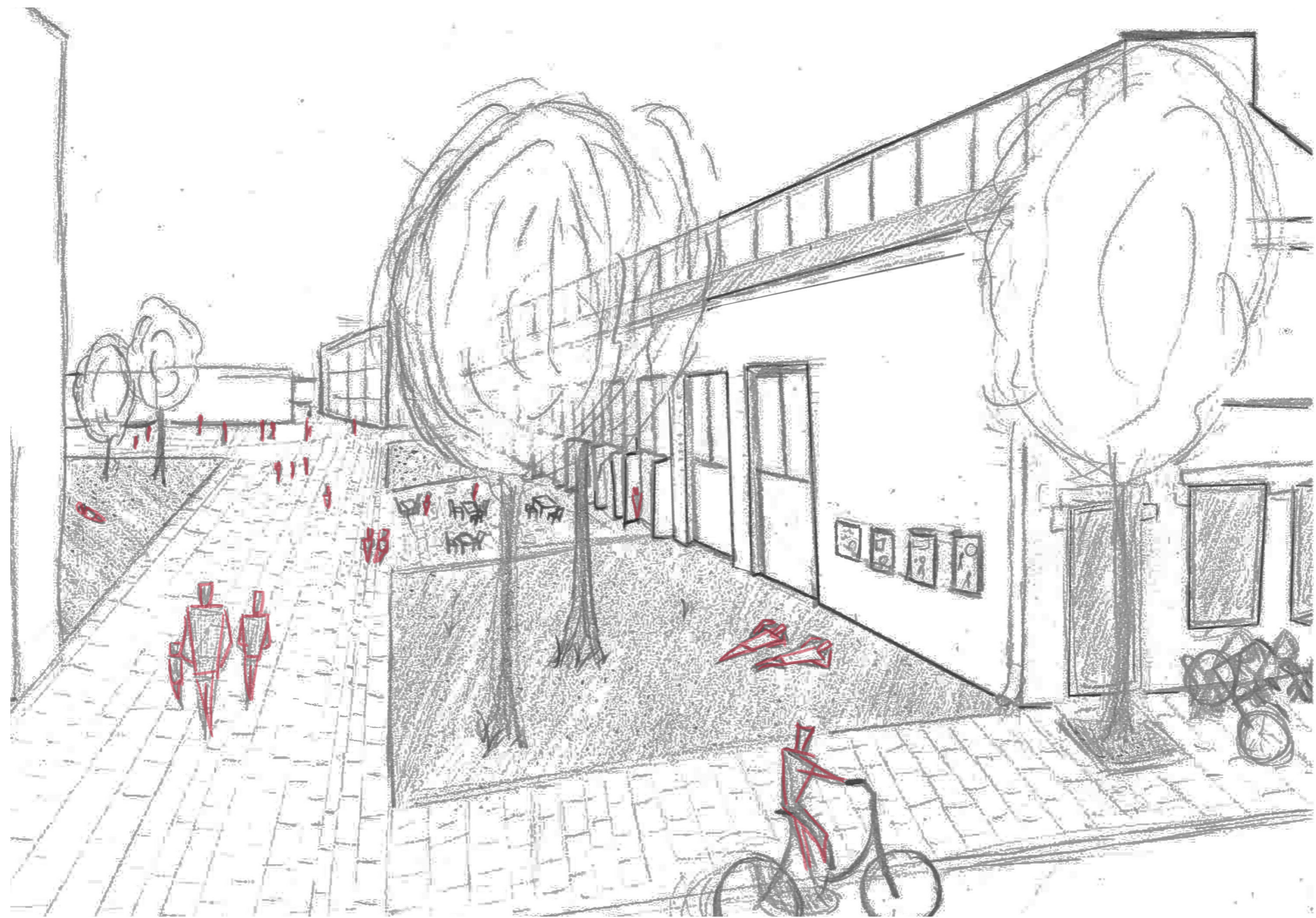
theater café in Theater Nova



theater café in Theater Vaillant













north elevation 1:200



south elevation 1:200



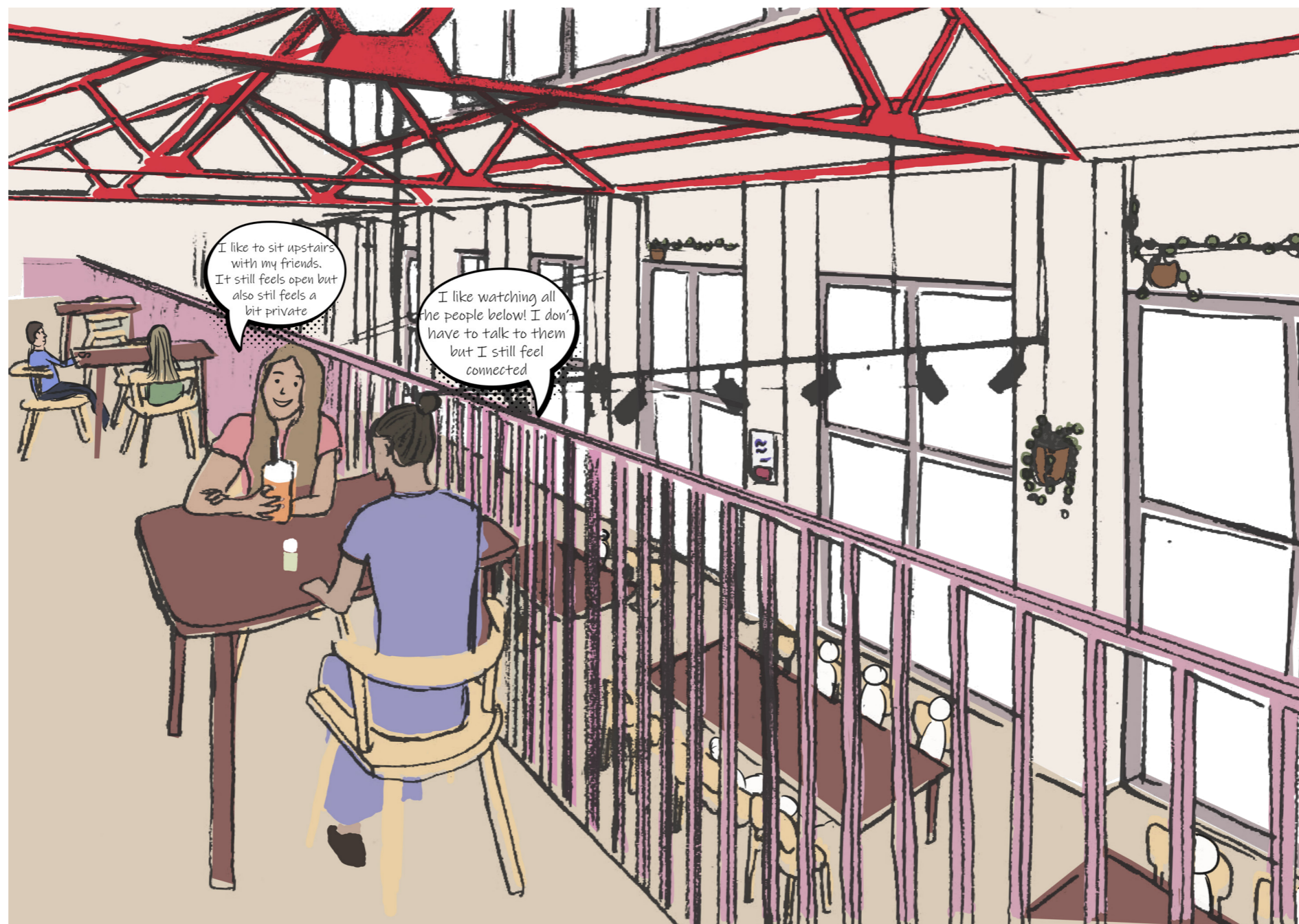
east elevation 1:200



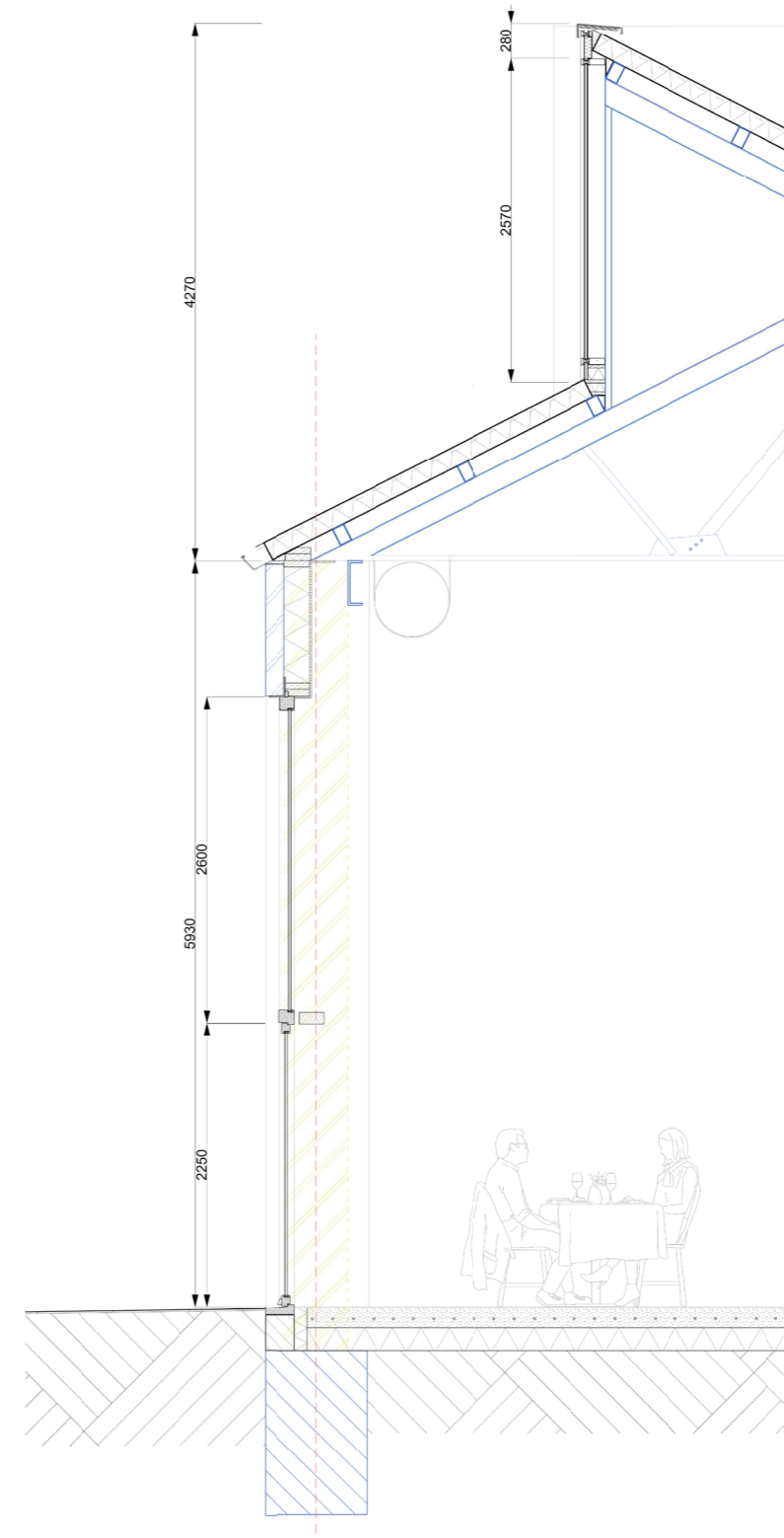
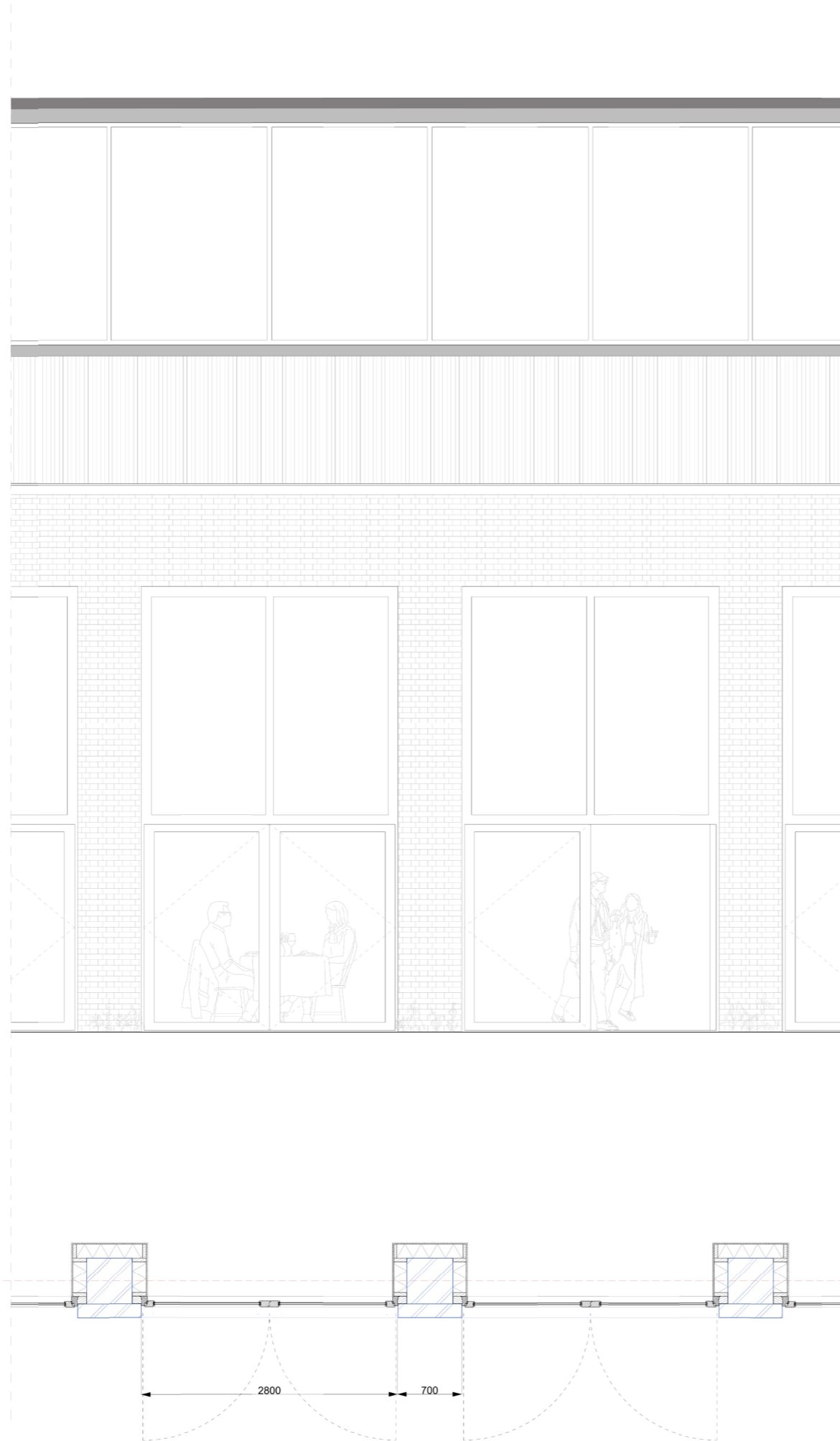
west elevation 1:200

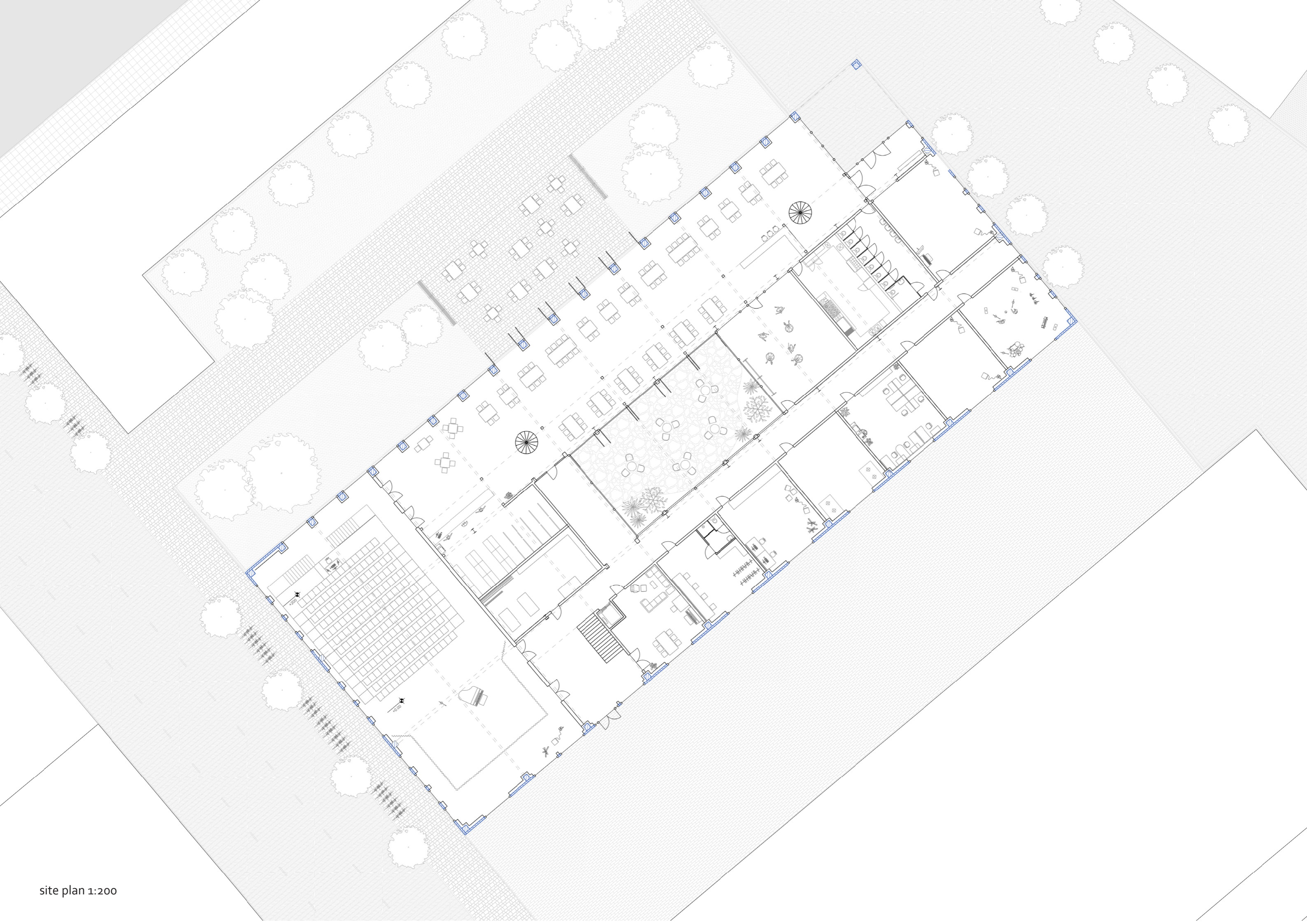


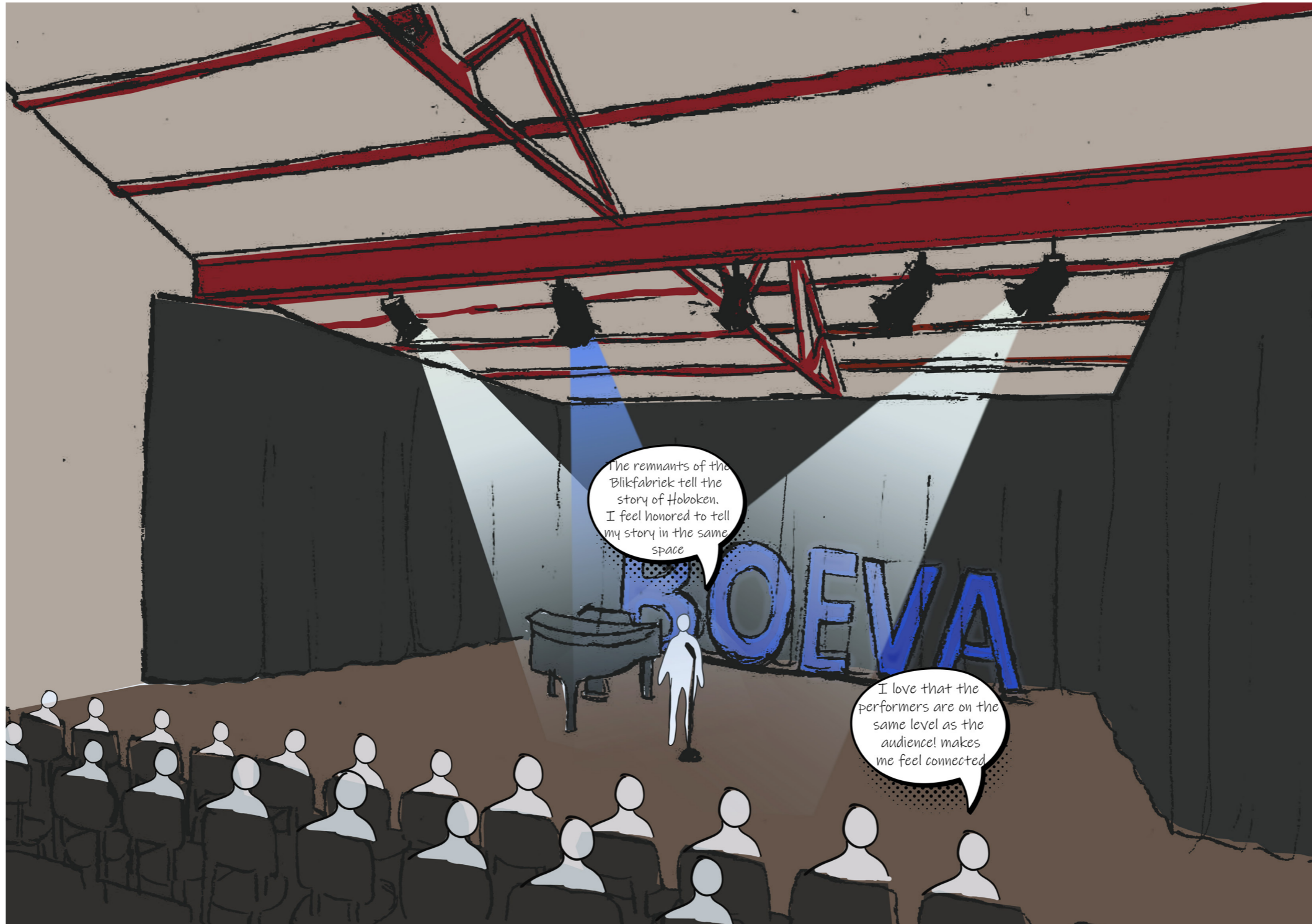
impression of the theater café



impression of a the mezzanine looking into the theater café







impression of the theater space

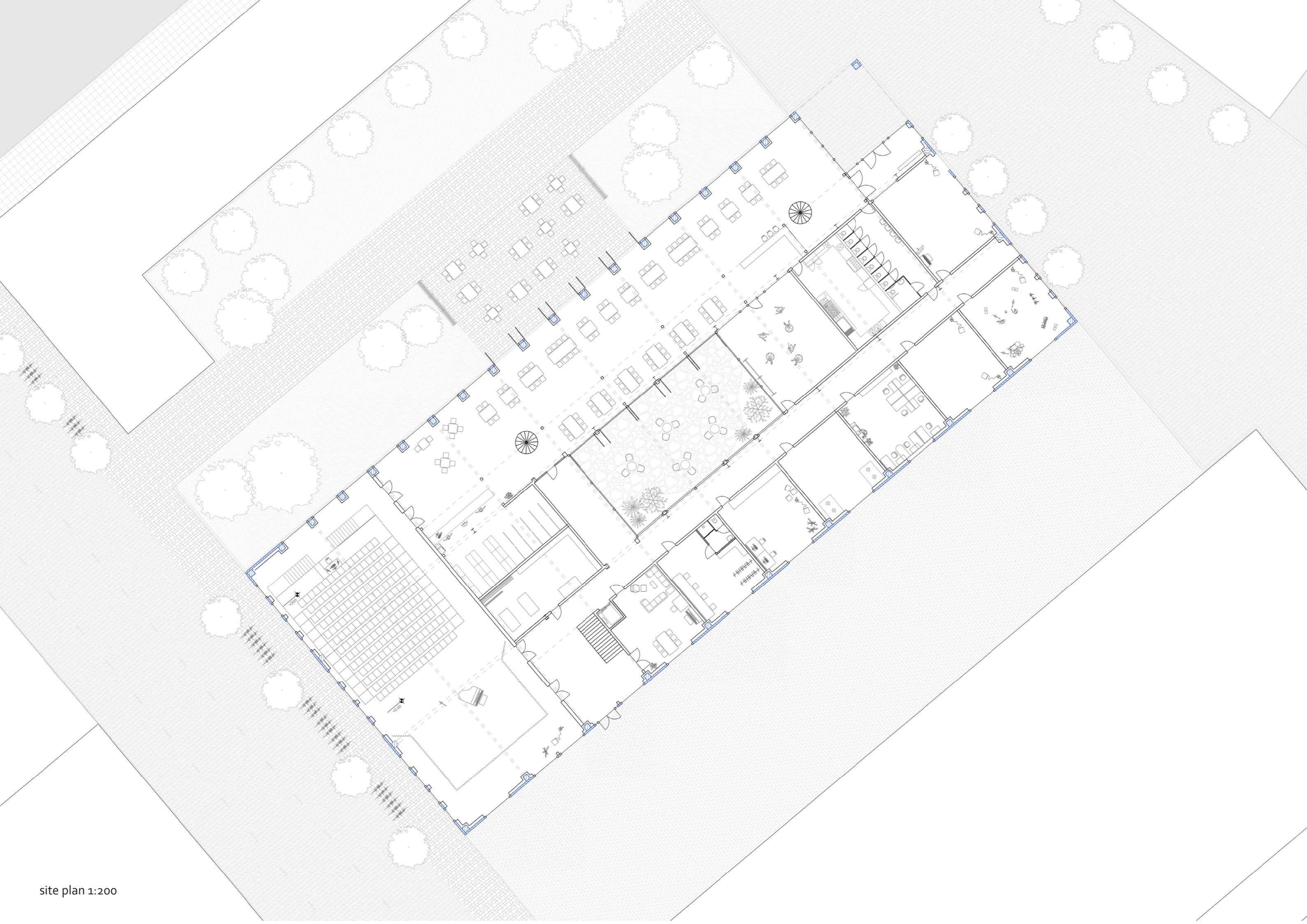


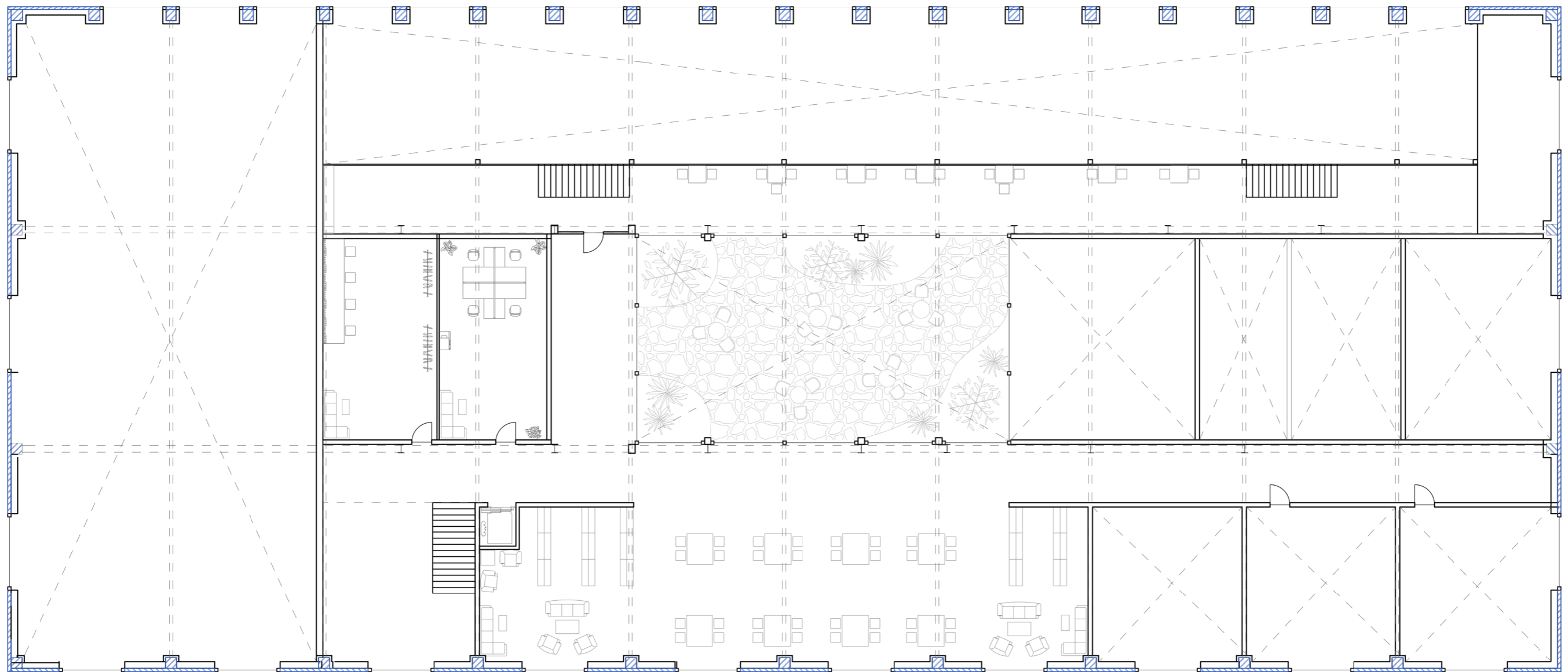
simple and movable chairs in case of another audience configuration

storage space behind the curtain

stage is level with the floor. This made for a more personal connection between artist and audience

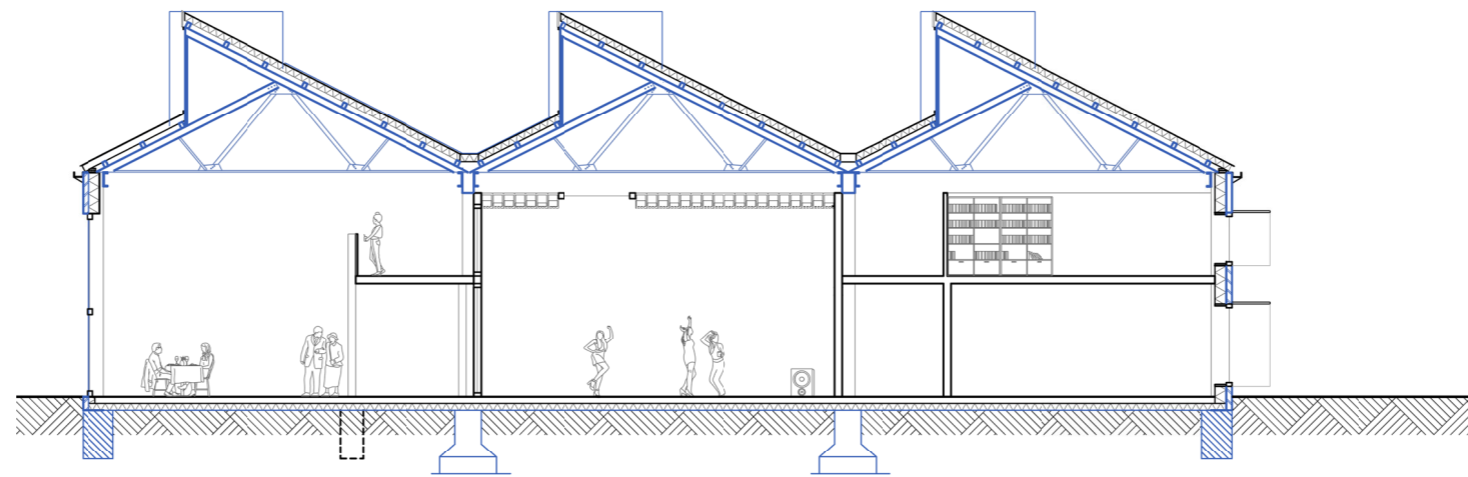
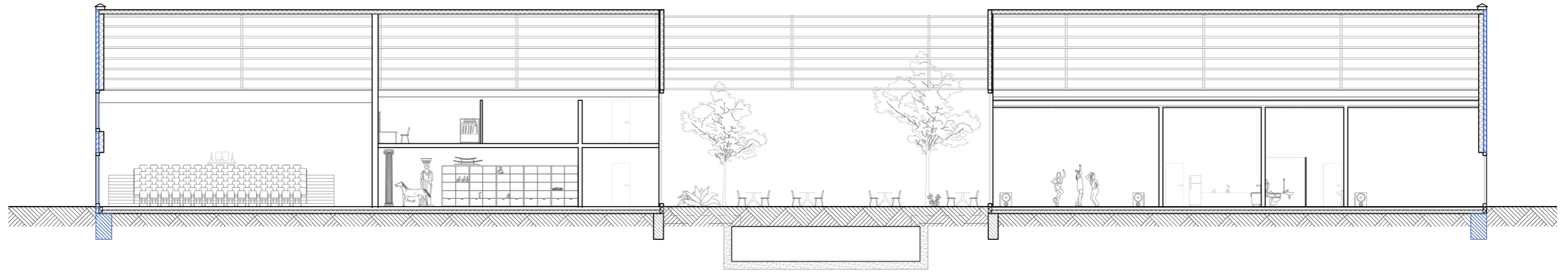
theater space in Theater Nova



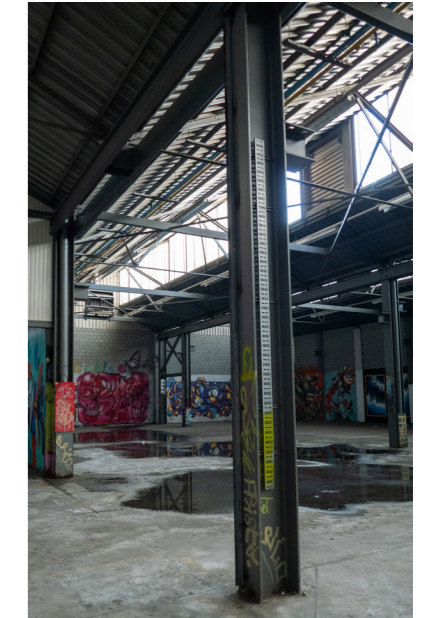
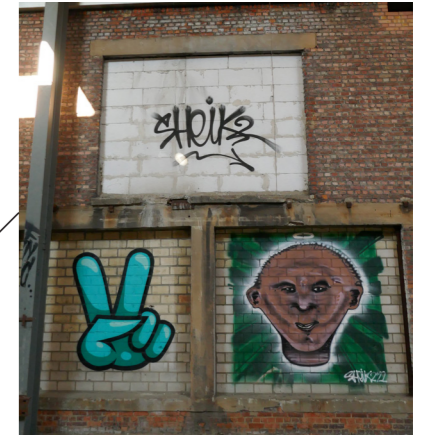
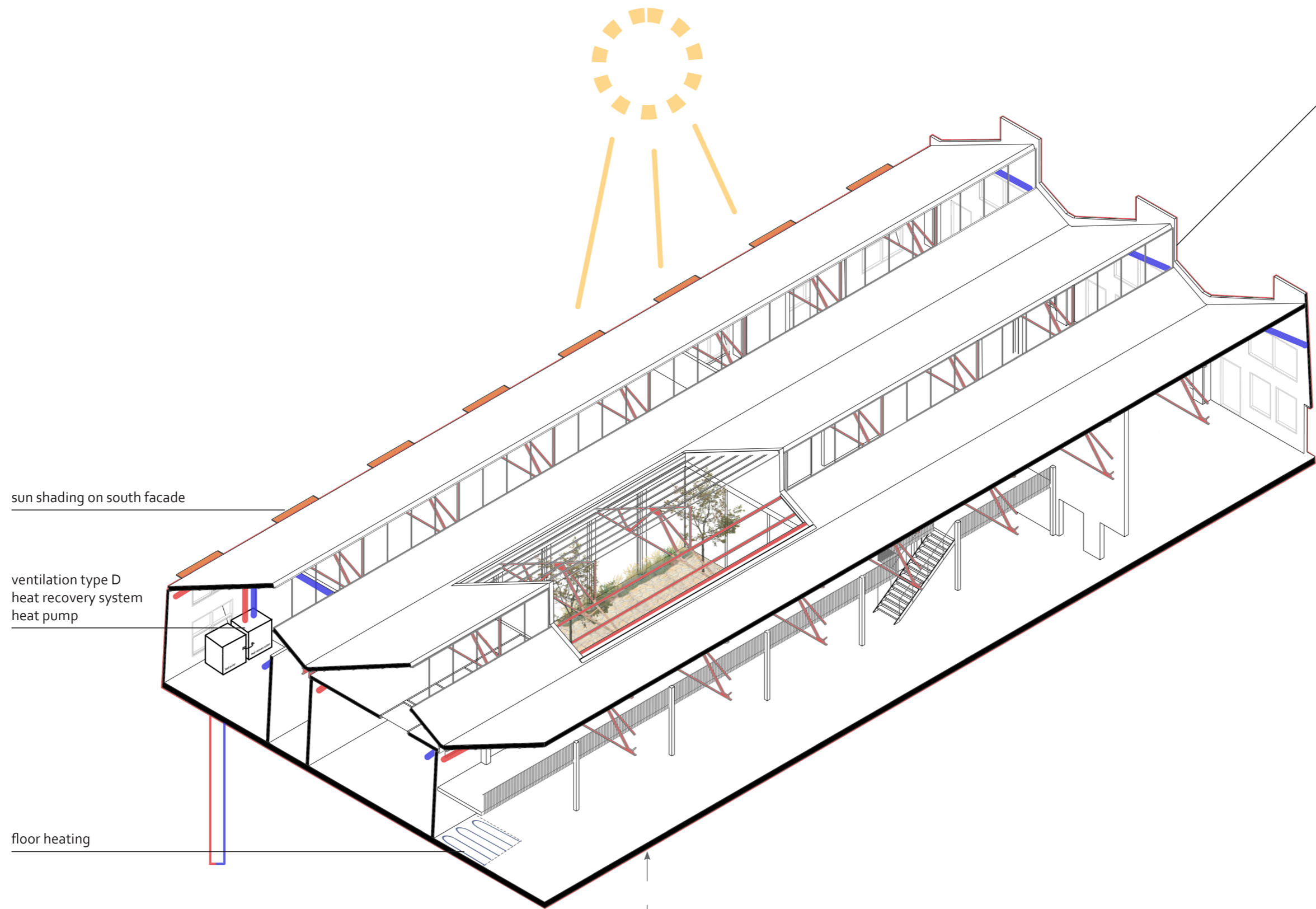




impression of a nook in the library

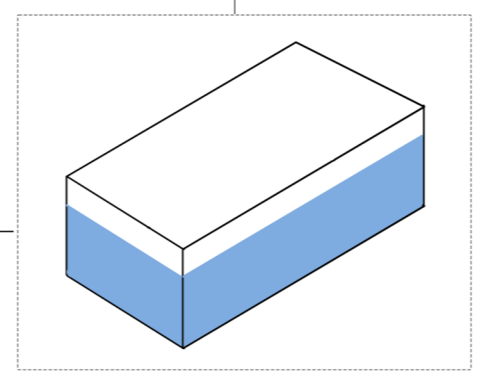


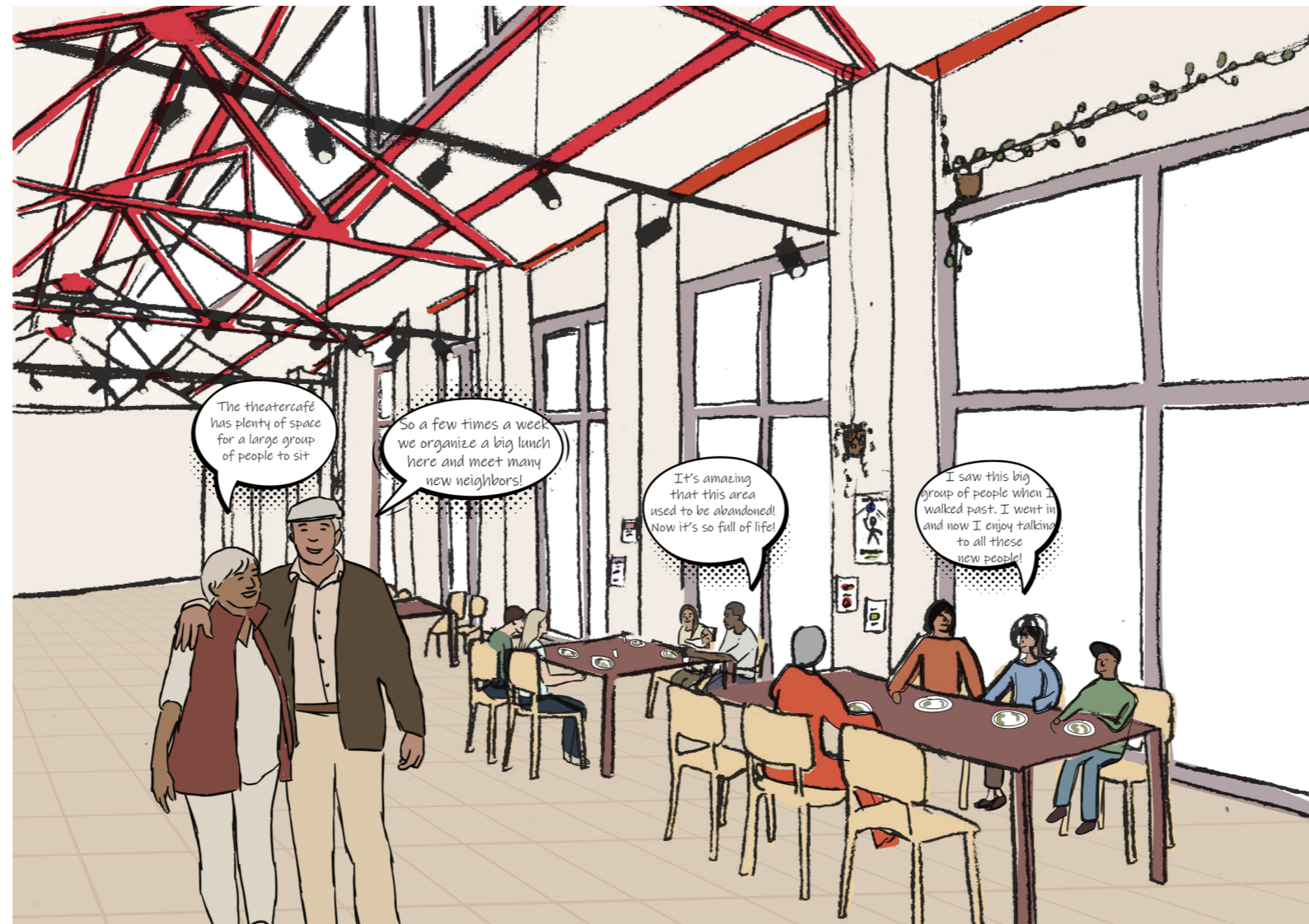
sections 1:200



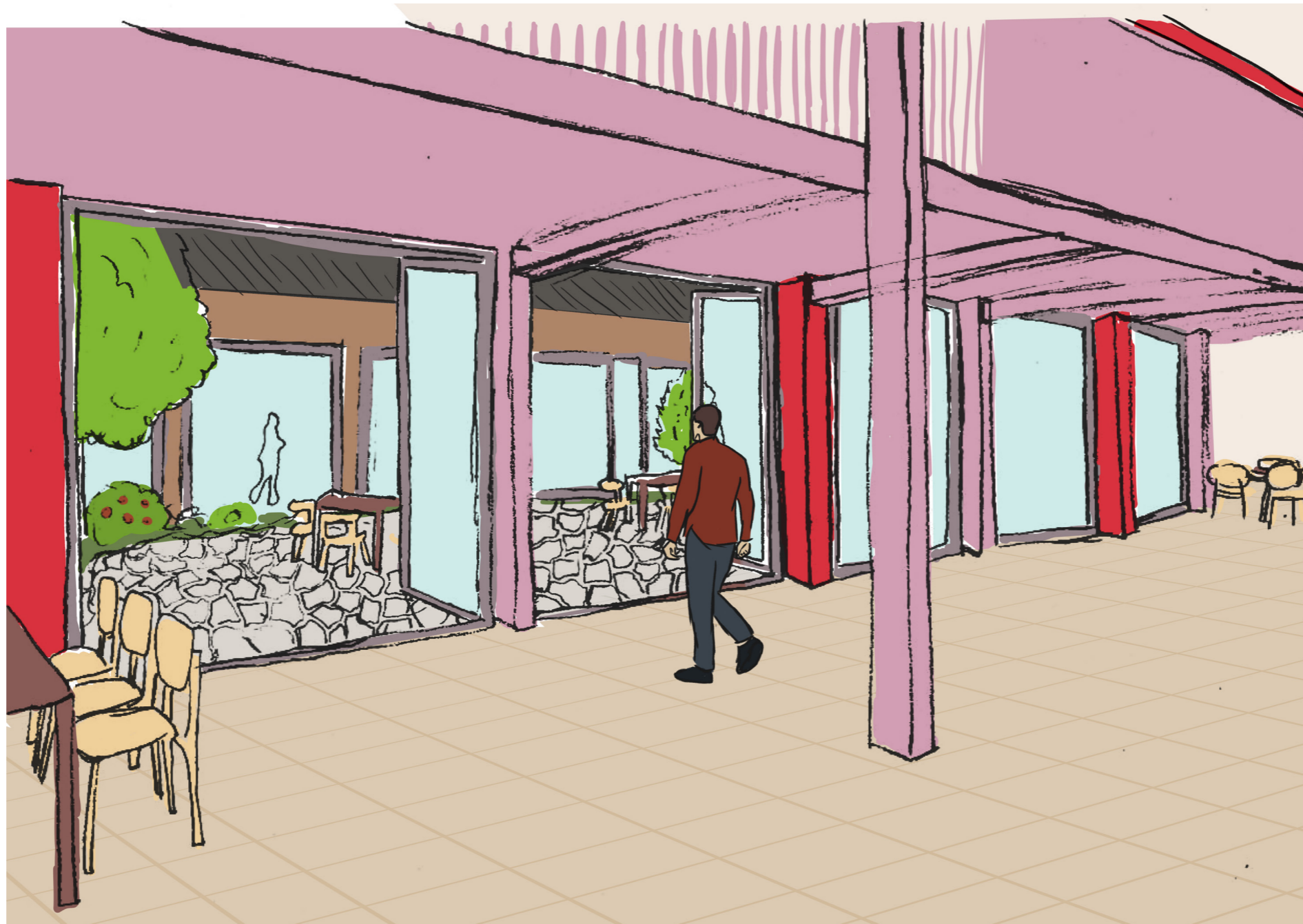
keeping the original structure and facade

basin for rainwater storage

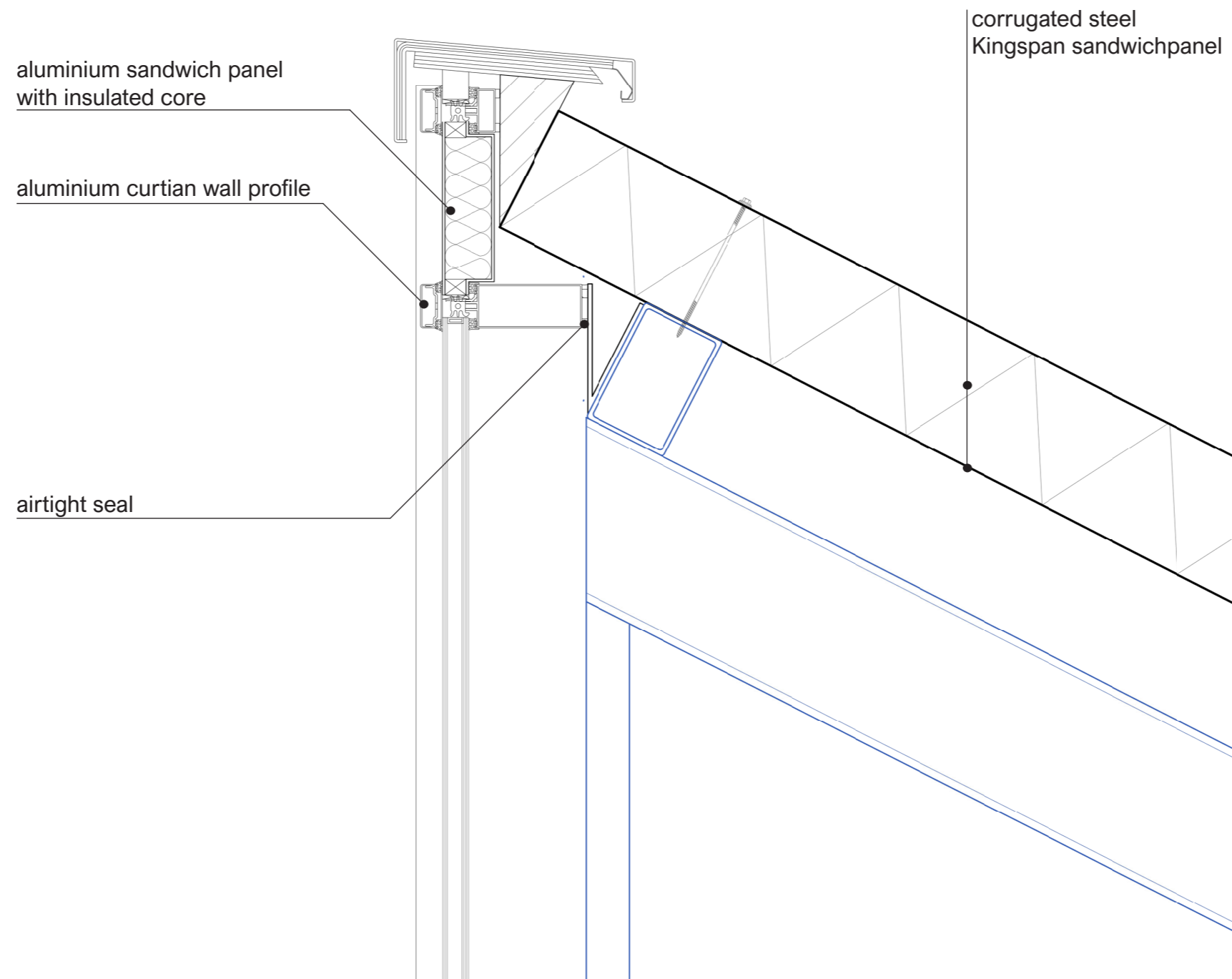


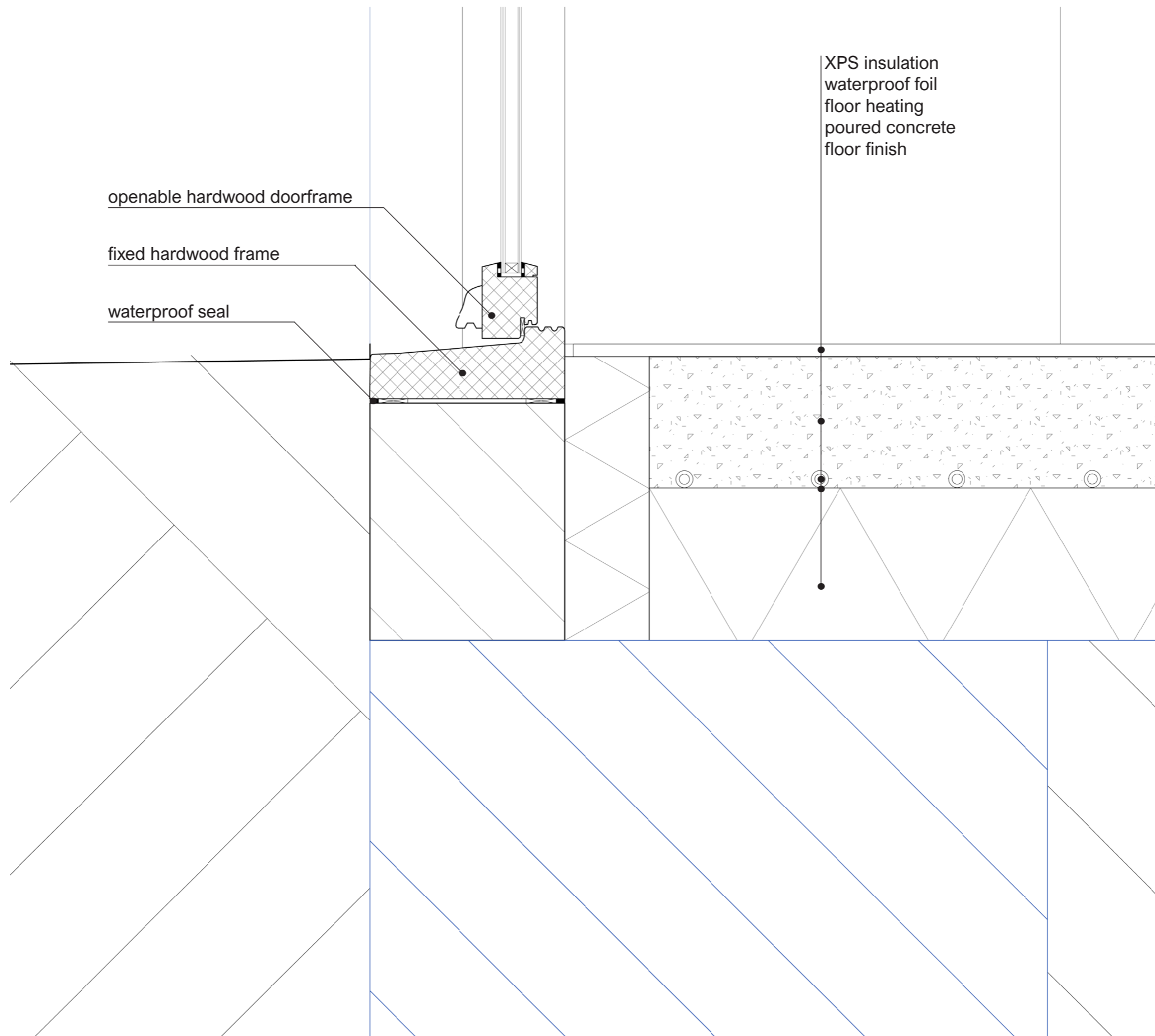


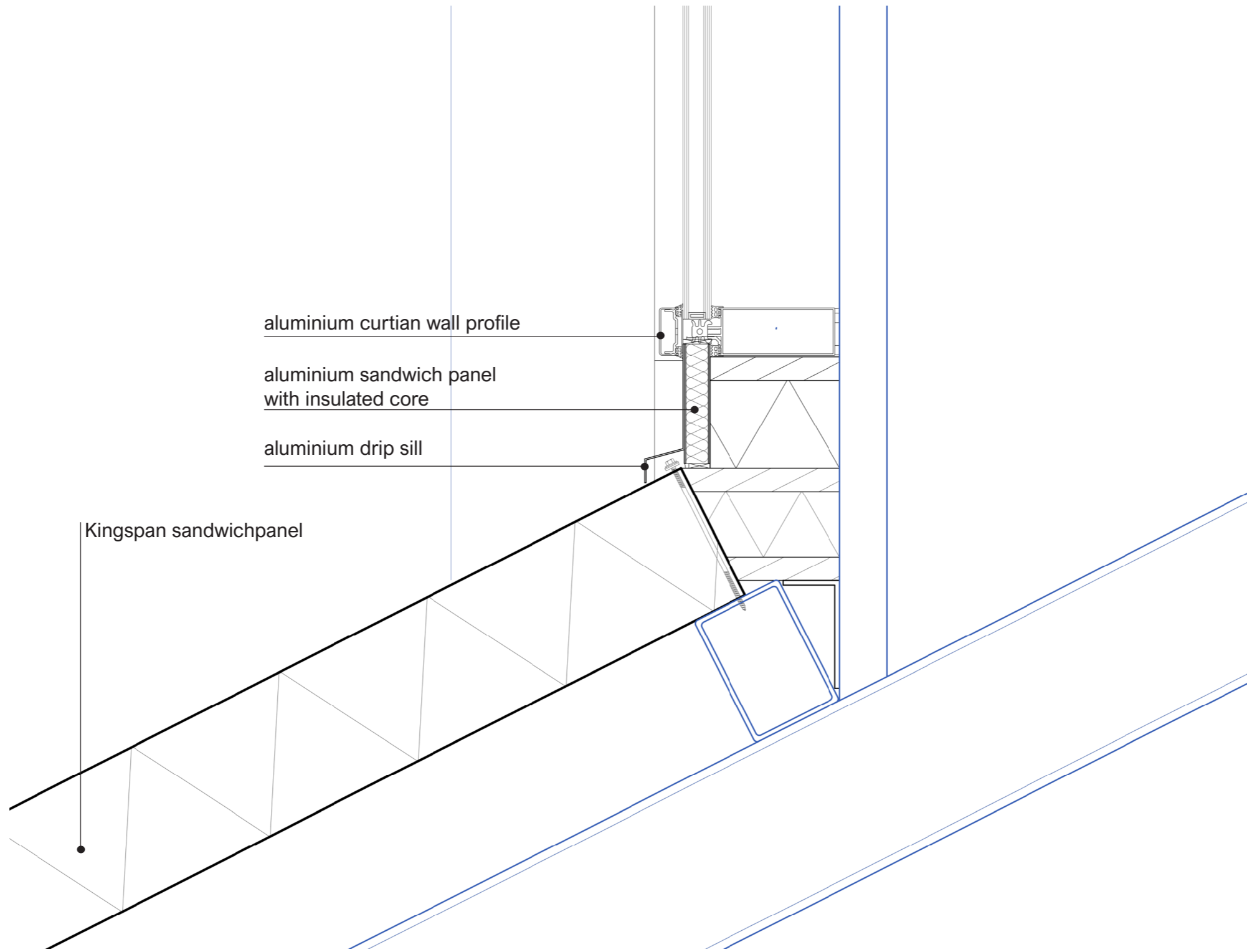
**thank you**

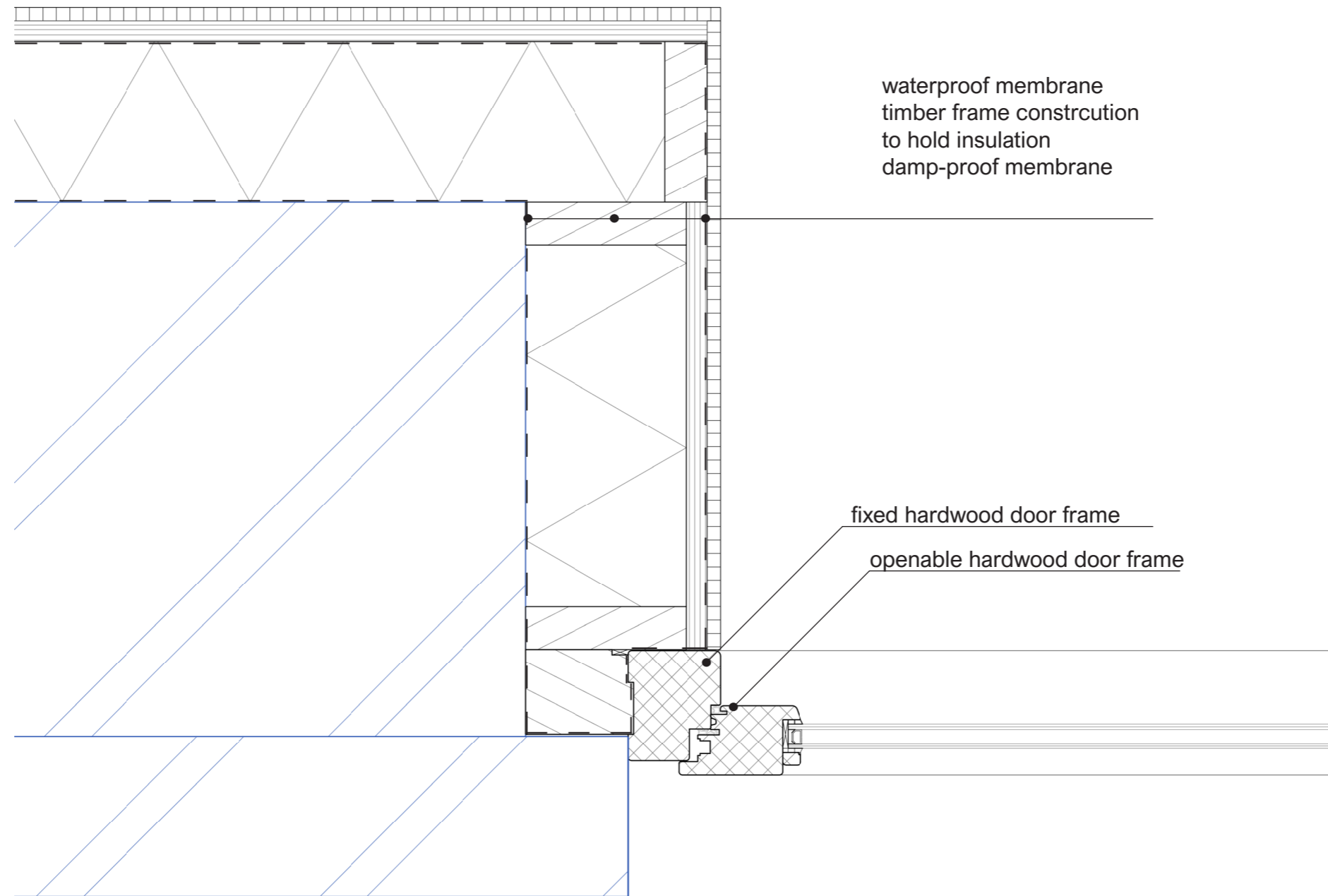


impression of the courtyard









waterproof membrane  
timber frame construction  
to hold insulation  
damp-proof membrane

fixed hardwood door frame

openable hardwood door frame

horizontal detail 1:5