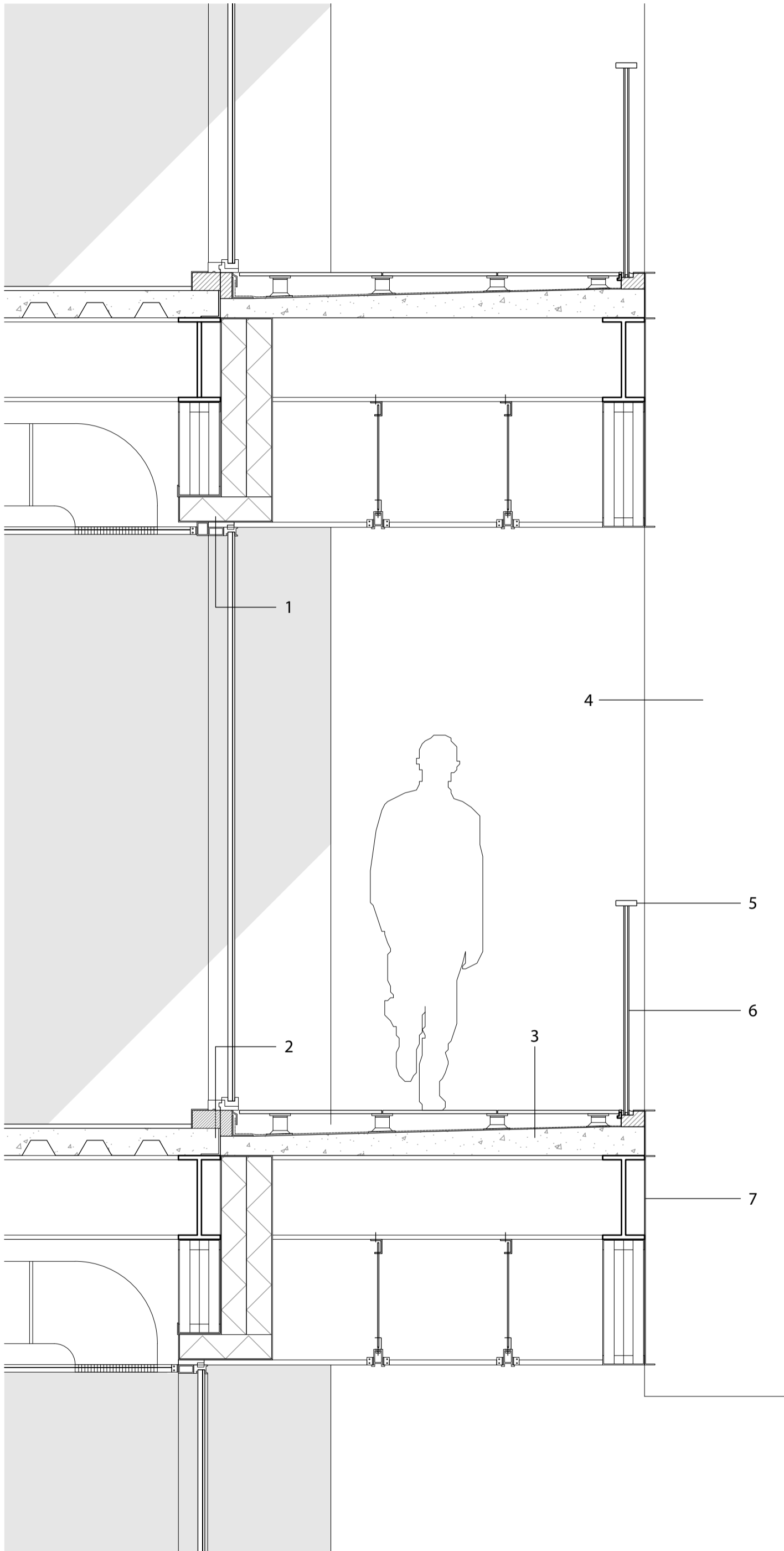


Section & West Elevation

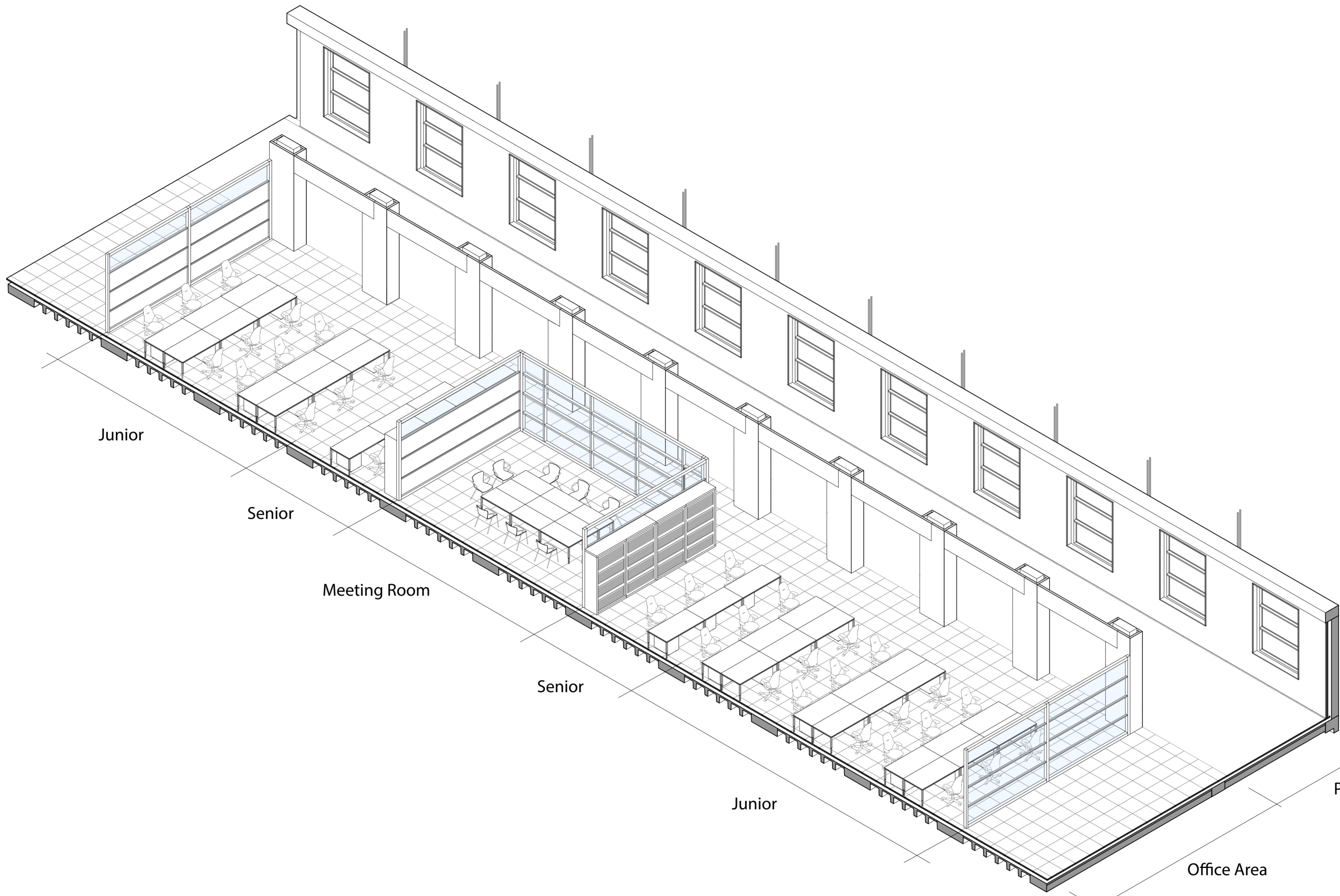
1:100  
National Bank of Belgium  
Brussels, Belgium



- 1 Vertical Aluminium Profile  
Installation Foam  
Waterproof Membrane  
XPS - 7cm  
Extruded polystyrene (XPS) board  
CLT Beam  
Steel Beam
- 2 Installation Foam  
Thermal Installation Element  
Interior Flooring - carpet  
Concrete Slab
- 3 Outdoor Flooring - granite  
PVC Raised Floor Pedestal  
Waterproof Membrane - 4mm
- 4 Aluminium Vertical Fins
- 5 Railing Handle
- 6 Triplex Tempered Glass
- 7 Aluminium Fascia Panel

**Facade Details**

1:20  
National Bank of Belgium  
Brussels, Belgium



Junior

Senior

Meeting Room

Senior

Junior

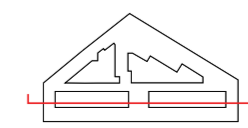
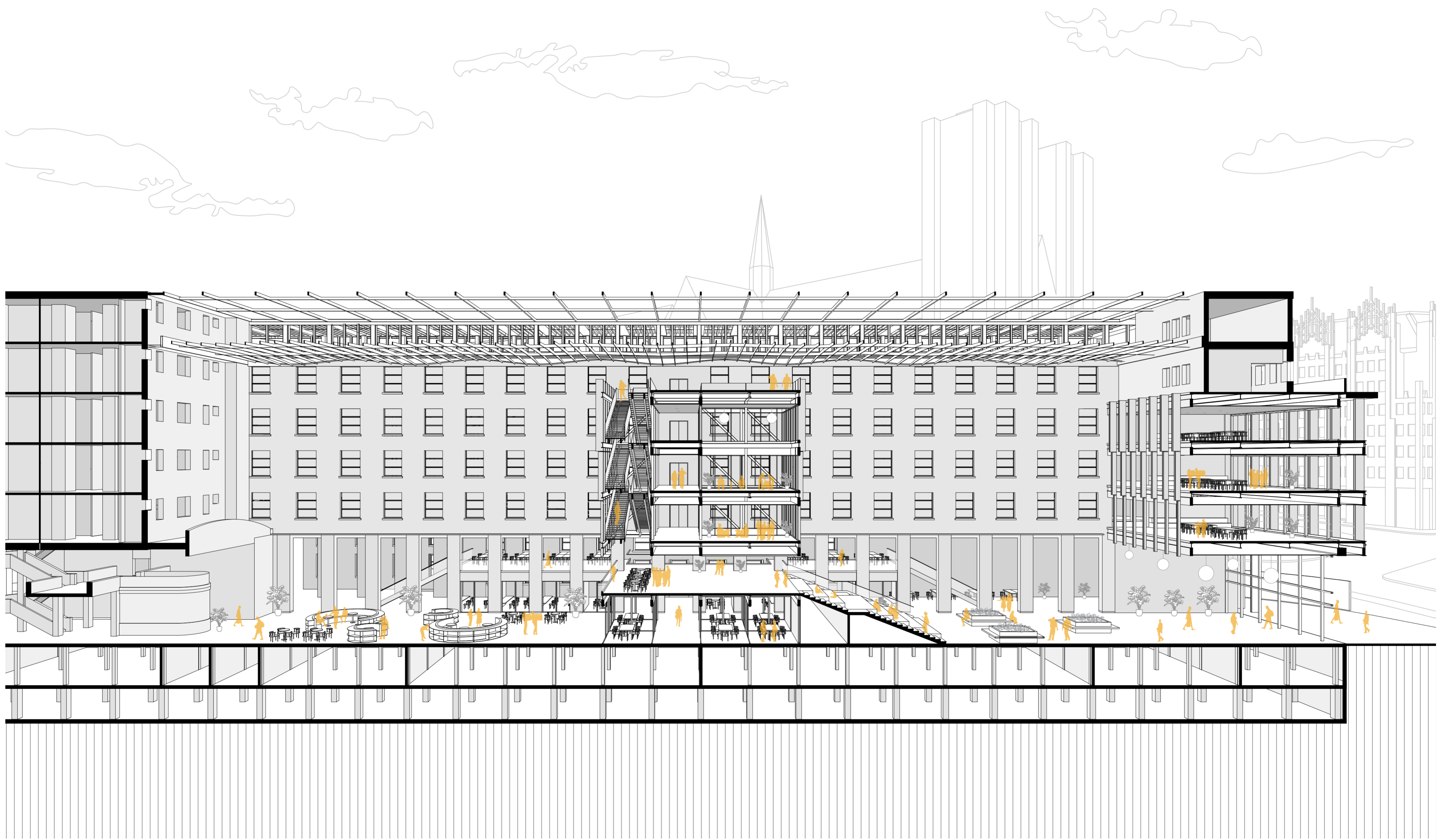
Office Area

Bank Lobby

Passage

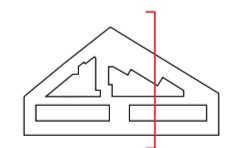
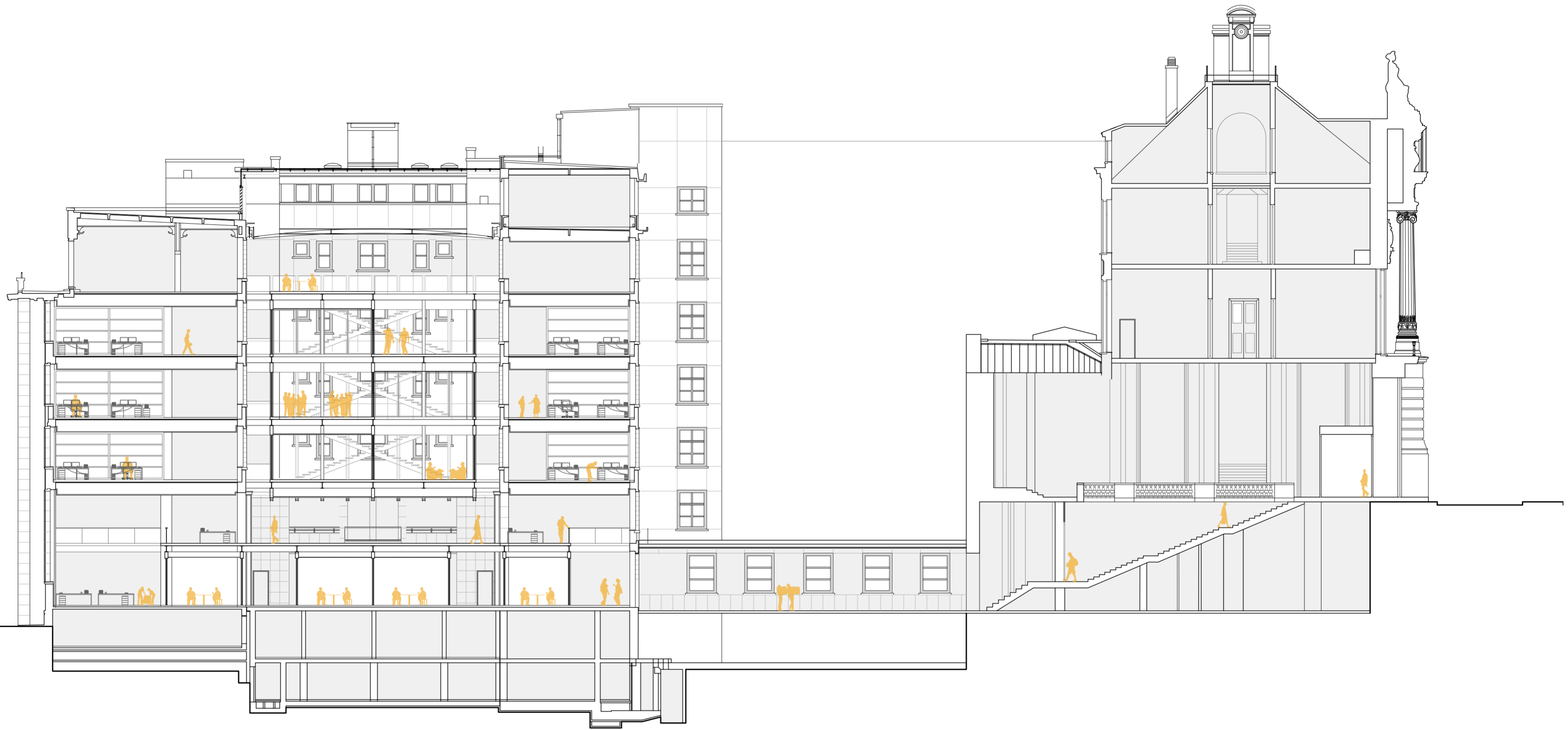
**Axonometrics**

1:150  
National Bank of Belgium  
Brussels, Belgium



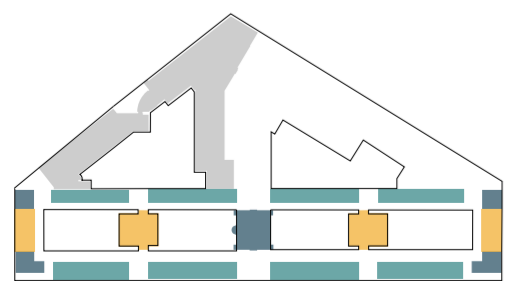
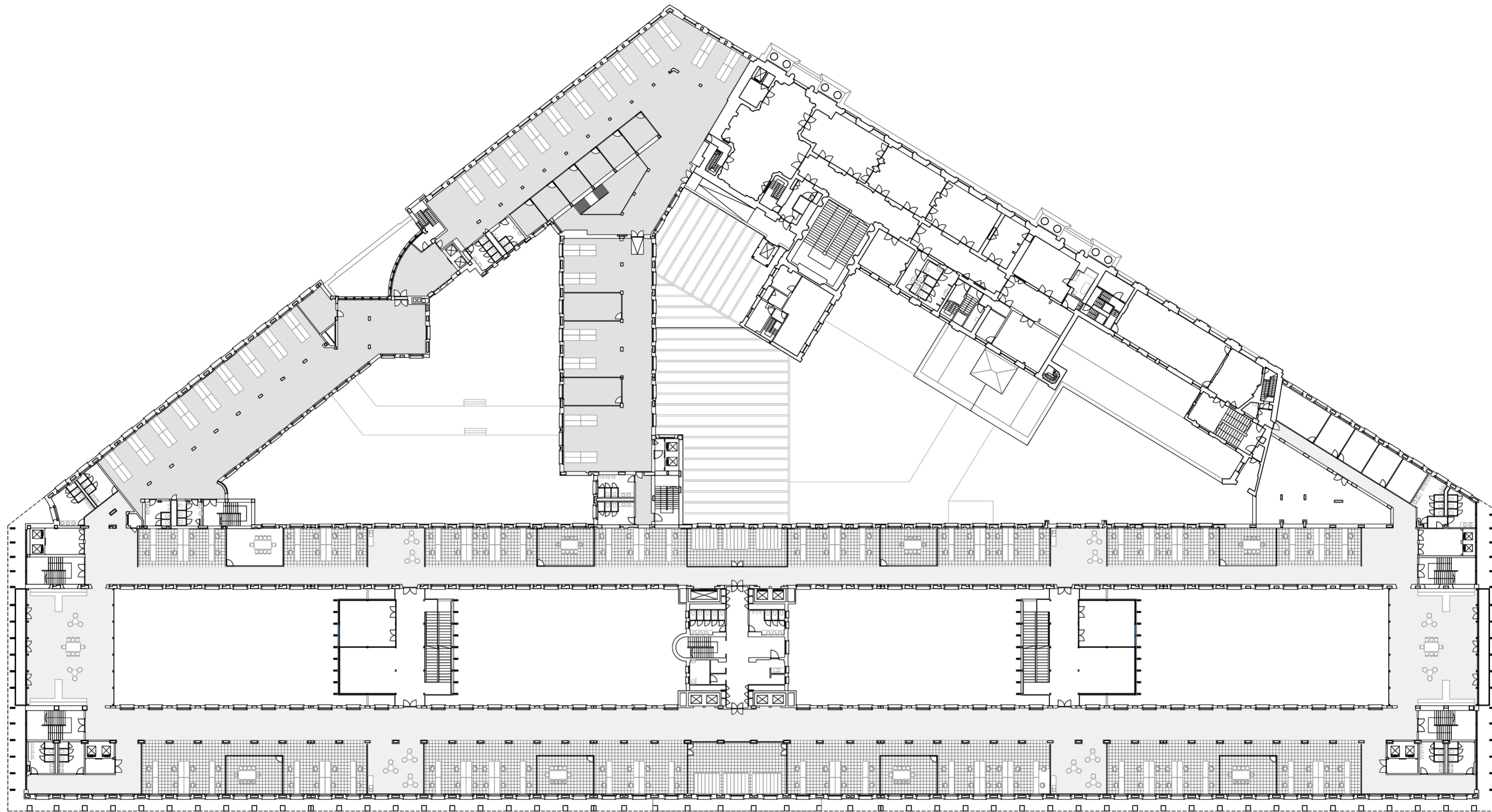
**Sectional Perspective**

1:300  
National Bank of Belgium  
Brussels, Belgium



**Section**

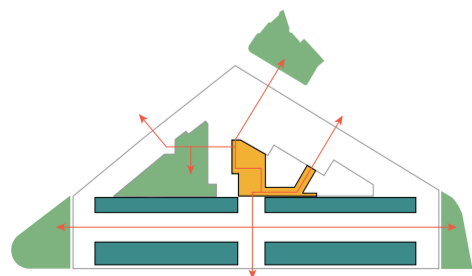
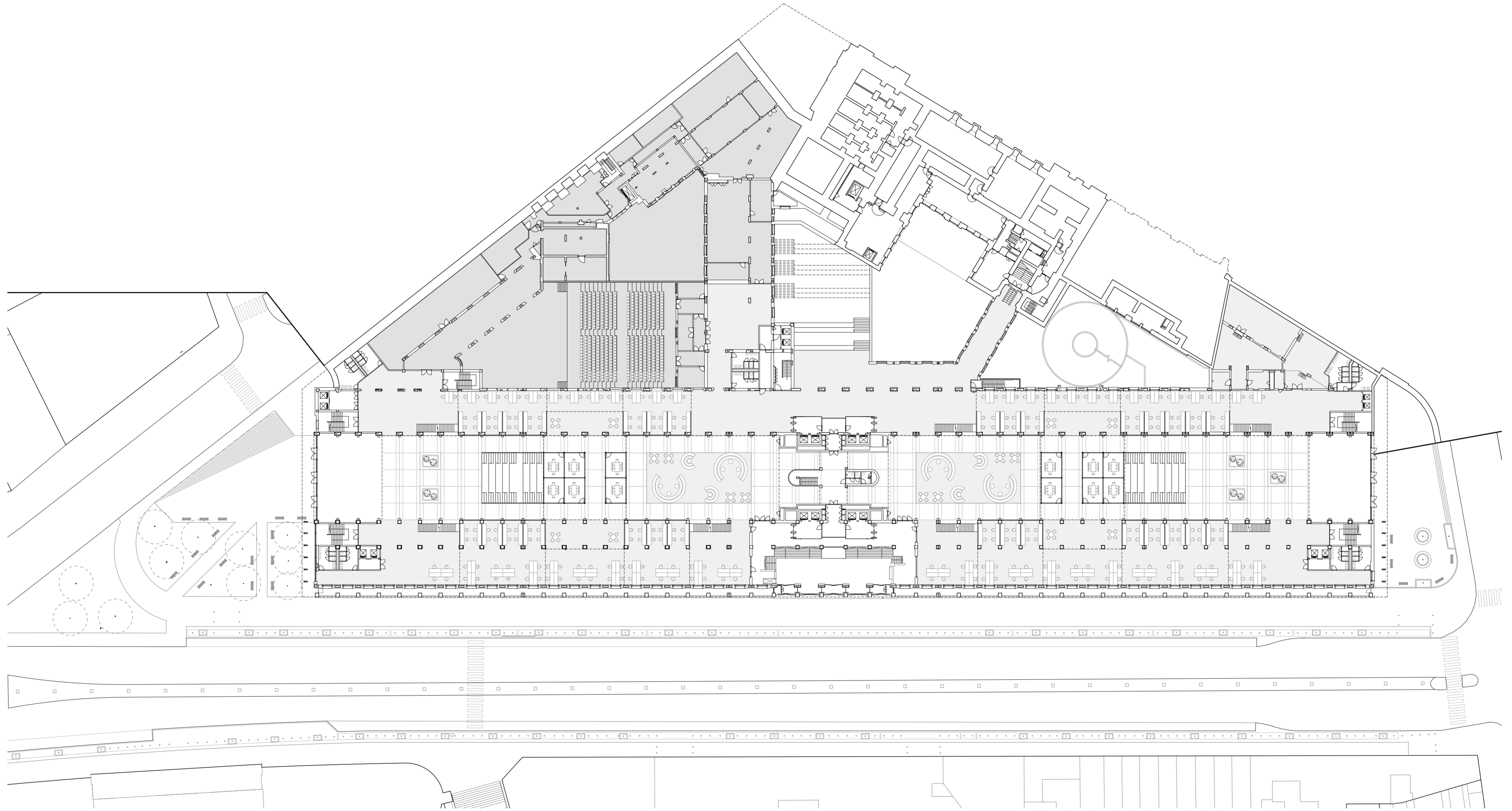
1:200  
National Bank of Belgium  
Brussels, Belgium






- Meeting Area
- Bank Office
- Rental Office
- Core

**Plan**

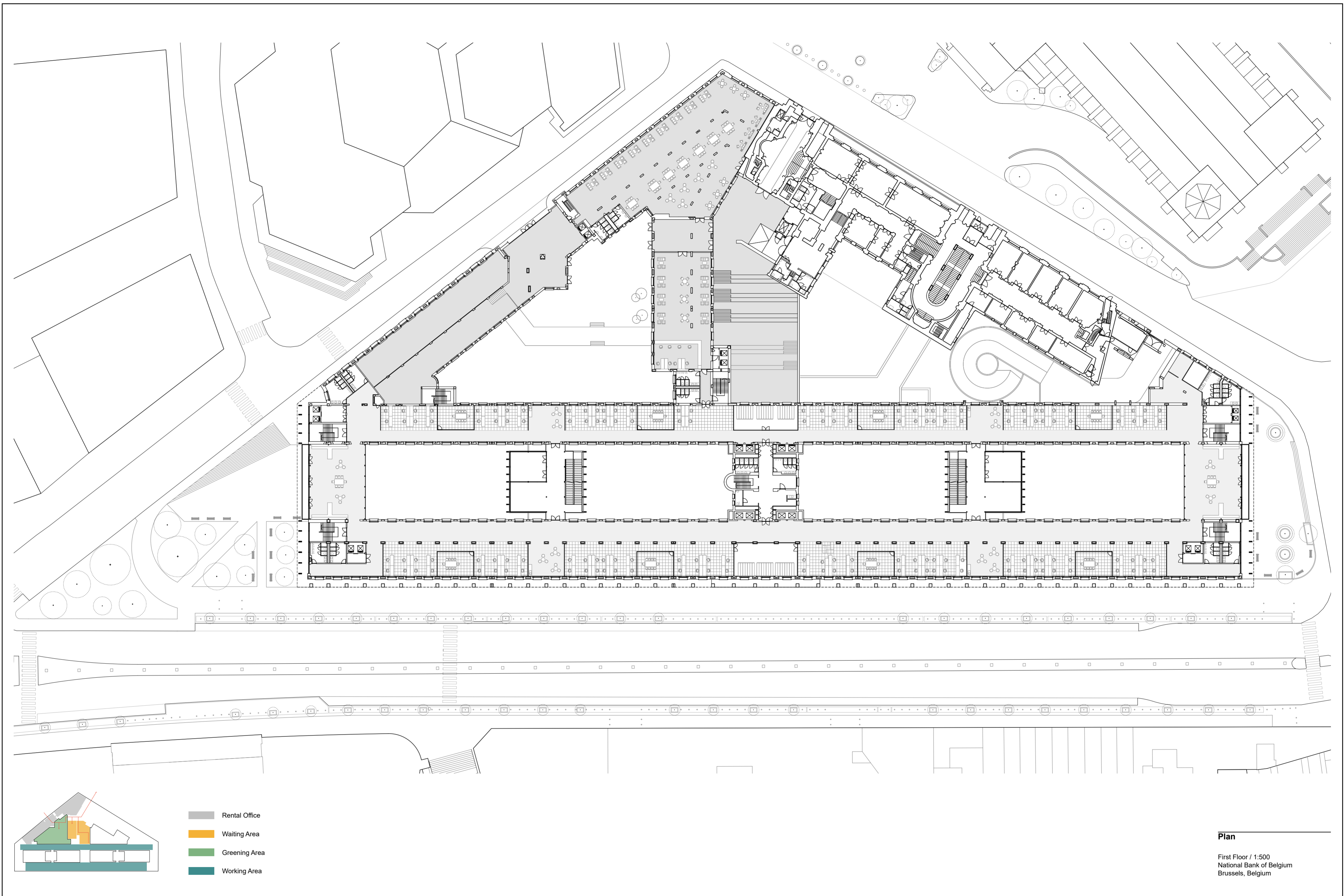
Third Floor / 1:500  
 National Bank of Belgium  
 Brussels, Belgium



-  Waiting Area
-  Greening Area
-  Working Area

**Plan**

Ground Floor / 1:500  
National Bank of Belgium  
Brussels, Belgium



- Rental Office
- Waiting Area
- Greening Area
- Working Area

**Plan**  
First Floor / 1:500  
National Bank of Belgium  
Brussels, Belgium



