

**Corrigendum to “Peak loads during dynamic ice-structure interaction caused by rapid ice strengthening at near-zero relative velocity” [Cold Regions Science and Technology 211 (2023) 103864]**

Owen, Cody C.; Hammer, Tim C.; Hendrikse, Hayo

**DOI**

[10.1016/j.coldregions.2023.103983](https://doi.org/10.1016/j.coldregions.2023.103983)

**Publication date**

2023

**Document Version**

Final published version

**Published in**

Cold Regions Science and Technology

**Citation (APA)**

Owen, C. C., Hammer, T. C., & Hendrikse, H. (2023). Corrigendum to “Peak loads during dynamic ice-structure interaction caused by rapid ice strengthening at near-zero relative velocity” [Cold Regions Science and Technology 211 (2023) 103864]. *Cold Regions Science and Technology*, 225, Article 103983. <https://doi.org/10.1016/j.coldregions.2023.103983>

**Important note**

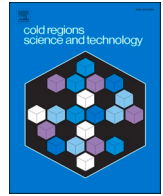
To cite this publication, please use the final published version (if applicable). Please check the document version above.

**Copyright**

Other than for strictly personal use, it is not permitted to download, forward or distribute the text or part of it, without the consent of the author(s) and/or copyright holder(s), unless the work is under an open content license such as Creative Commons.

**Takedown policy**

Please contact us and provide details if you believe this document breaches copyrights. We will remove access to the work immediately and investigate your claim.



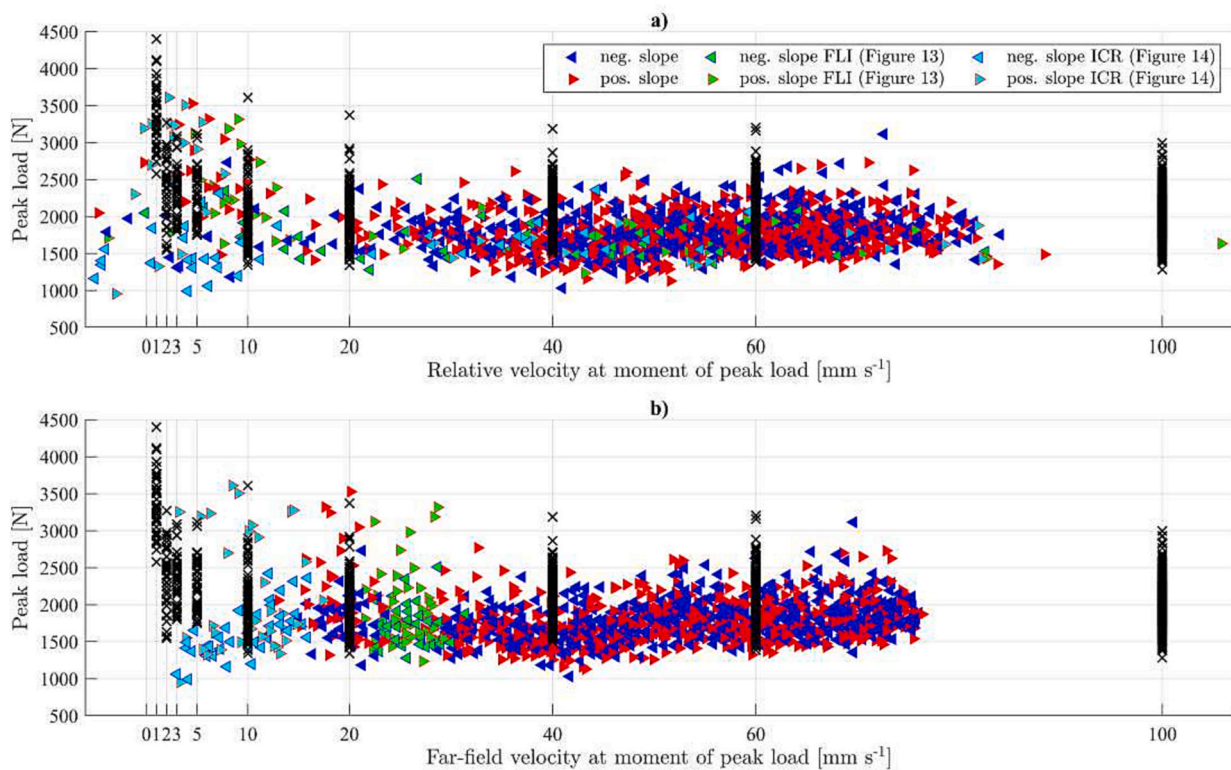
## Corrigendum to “Peak loads during dynamic ice-structure interaction caused by rapid ice strengthening at near-zero relative velocity” [Cold Regions Science and Technology 211 (2023) 103864]

Cody C. Owen<sup>\*</sup>, Tim C. Hammer, Hayo Hendrikse

Delft University of Technology, Faculty of Civil Engineering and Geosciences, Department of Hydraulic Engineering, Section of Offshore Engineering, Stevinweg 1, Delft 2628CN, the Netherlands

The authors regret their errors in the production of the legend labels and marker colors in Fig. 15 on page 11. The correct legend labels and marker colors are provided in the figure below:

The authors would like to apologize for any inconvenience caused.



DOI of original article: <https://doi.org/10.1016/j.coldregions.2023.103864>.

<sup>\*</sup> Corresponding author.

E-mail address: [c.c.owen@tudelft.nl](mailto:c.c.owen@tudelft.nl) (C.C. Owen).

<https://doi.org/10.1016/j.coldregions.2023.103983>

Available online 14 September 2023

0165-232X/© 2023 The Author(s). Published by Elsevier B.V. All rights reserved.