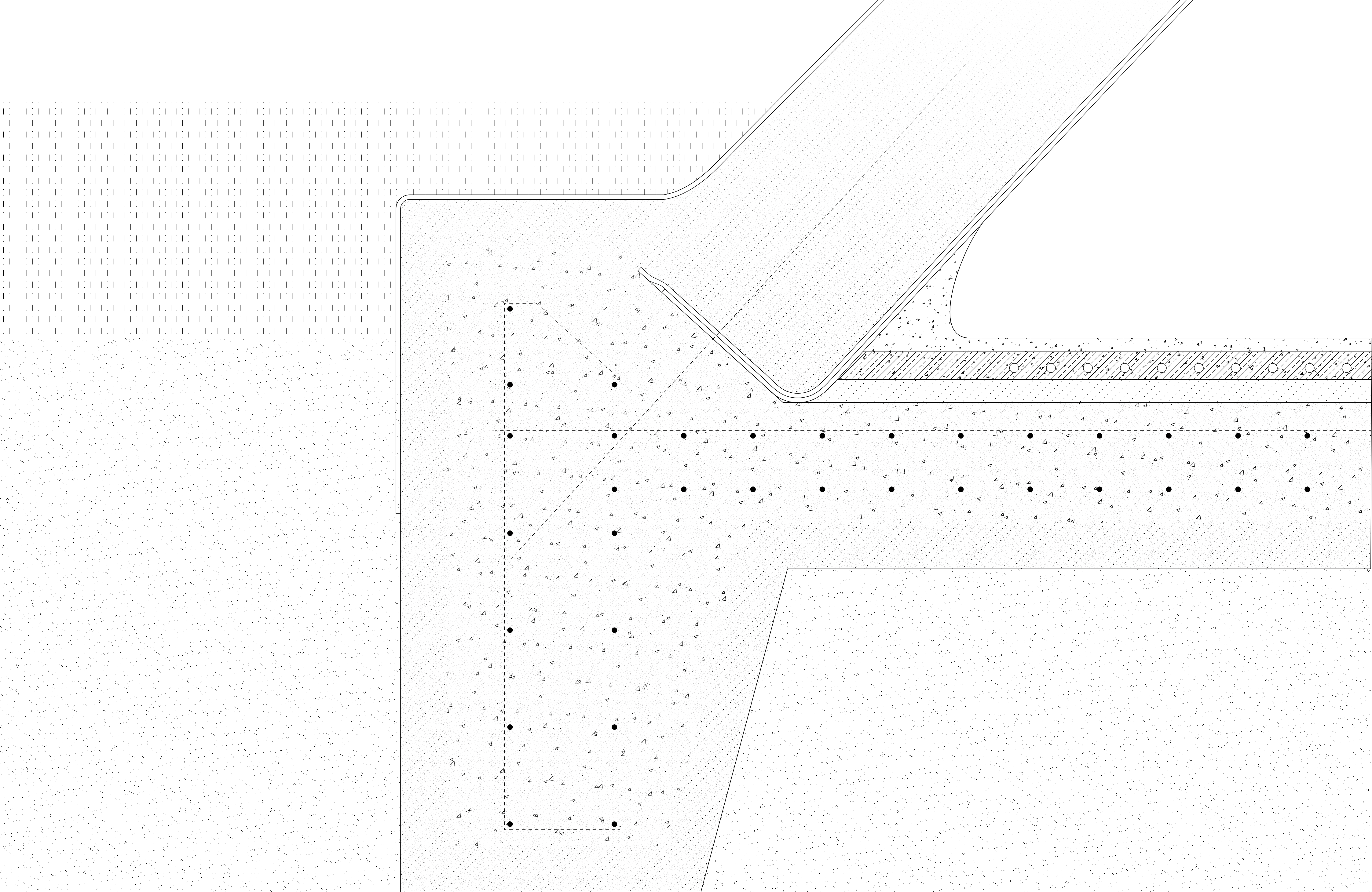


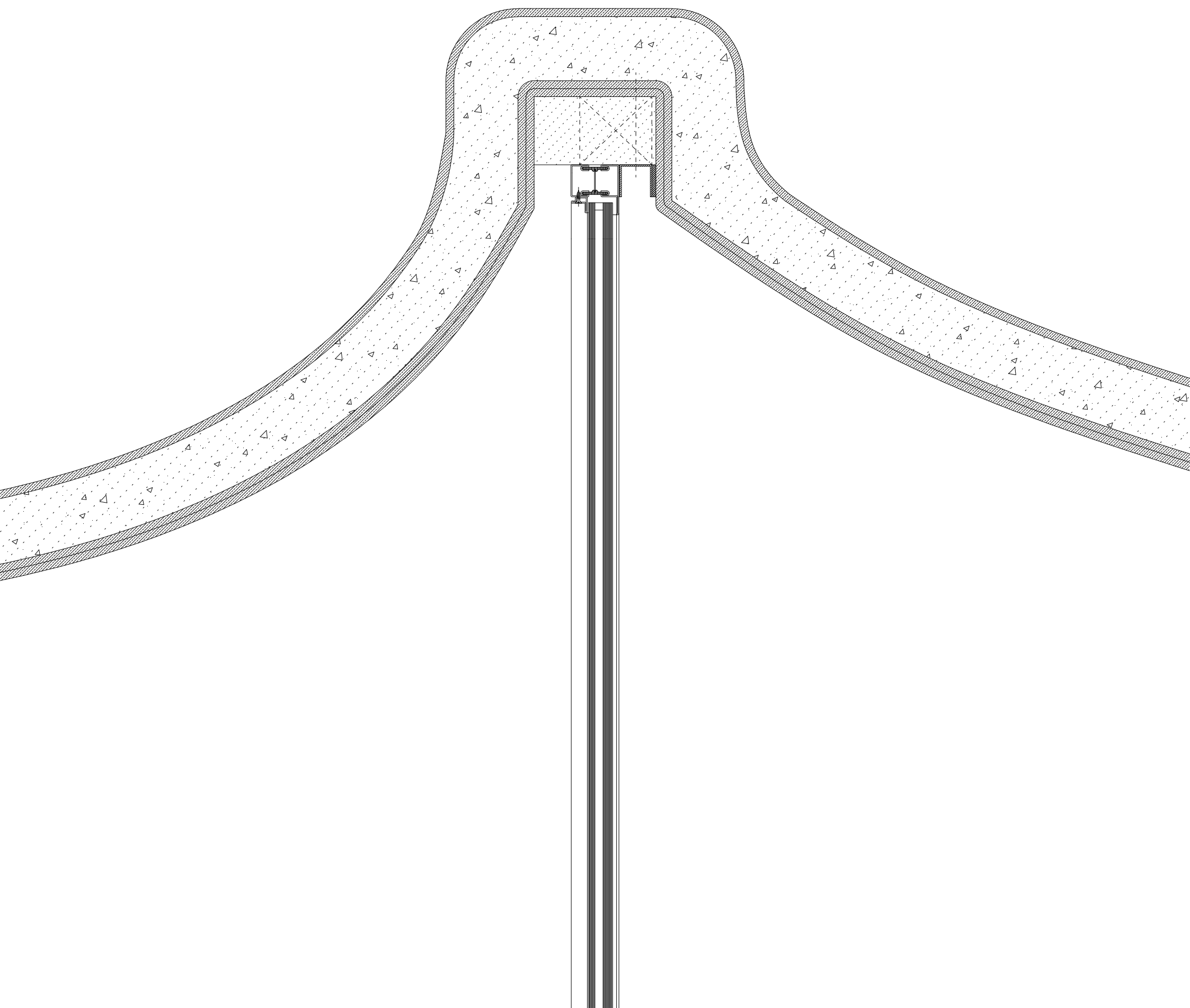
Cross Section 1:50



1 mm ALE waterproof coating
10 mm composite fabric
80 mm composite (load bearing – insulating)
2 x 10 mm composite fabric

85 mm composite (insulating)
90 x 85 x 120 mm timber fixing block
5 mm felt (tolerance)
40 x 40 x 2 mm steel U-profile

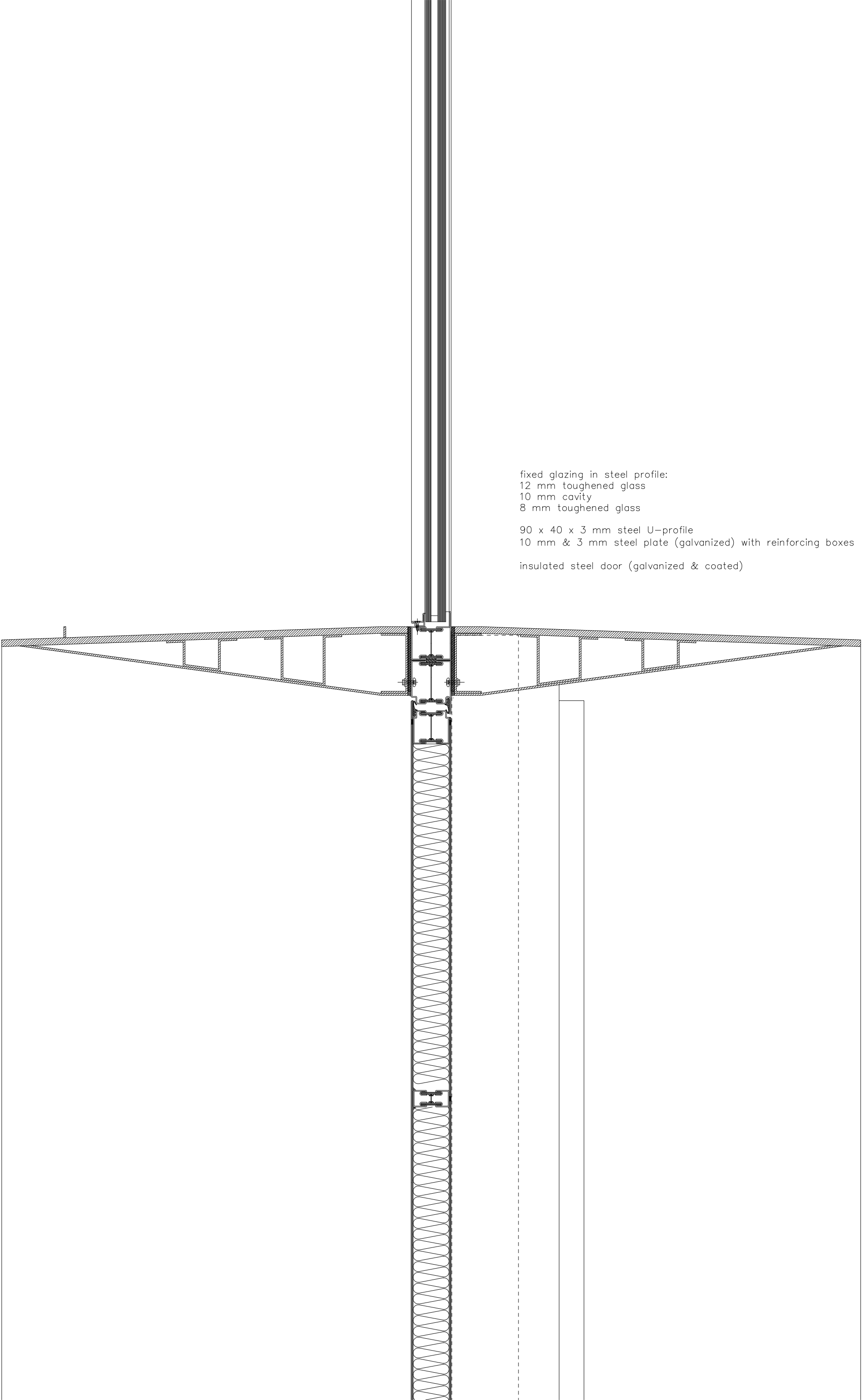
fixed glazing in steel profile:
12 mm toughened glass
10 mm cavity
8 mm toughened glass

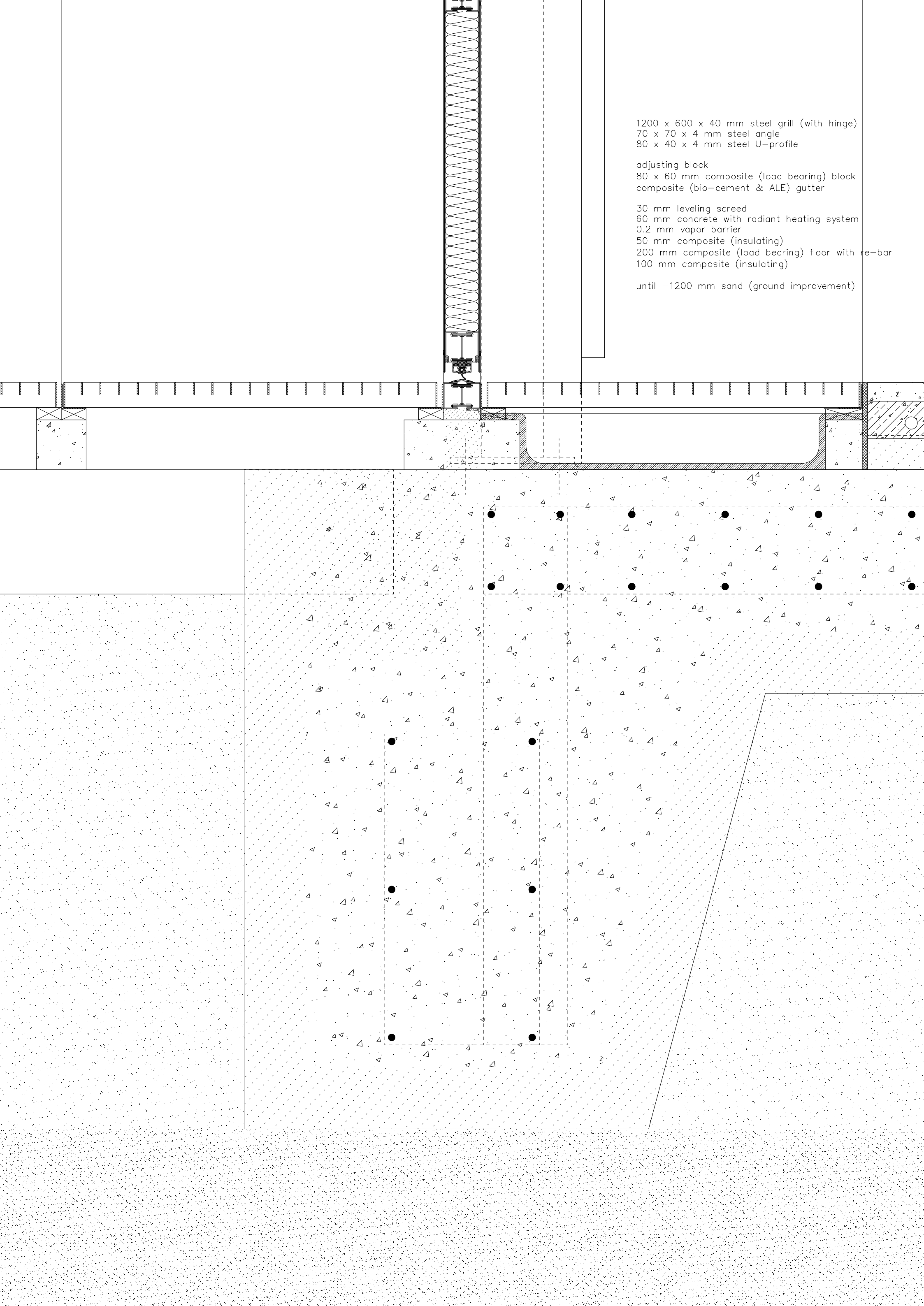


fixed glazing in steel profile:
12 mm toughened glass
10 mm cavity
8 mm toughened glass

90 x 40 x 3 mm steel U-profile
10 mm & 3 mm steel plate (galvanized) with reinforcing boxes

insulated steel door (galvanized & coated)



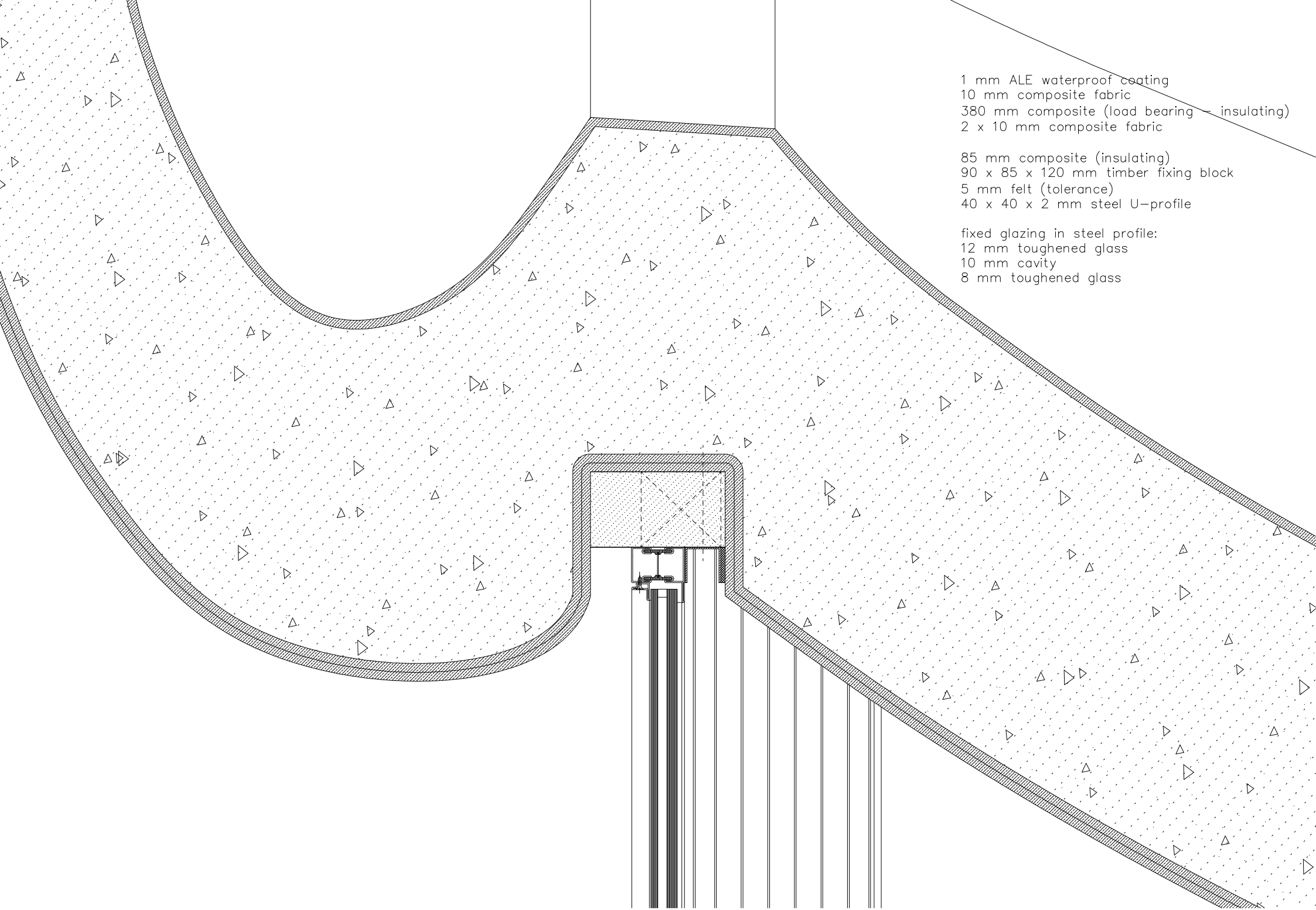


1200 x 600 x 40 mm steel grill (with hinge)
70 x 70 x 4 mm steel angle
80 x 40 x 4 mm steel U-profile

adjusting block
80 x 60 mm composite (load bearing) block
composite (bio-cement & ALE) gutter

30 mm leveling screed
60 mm concrete with radiant heating system
0.2 mm vapor barrier
50 mm composite (insulating)
200 mm composite (load bearing) floor with re-bar
100 mm composite (insulating)

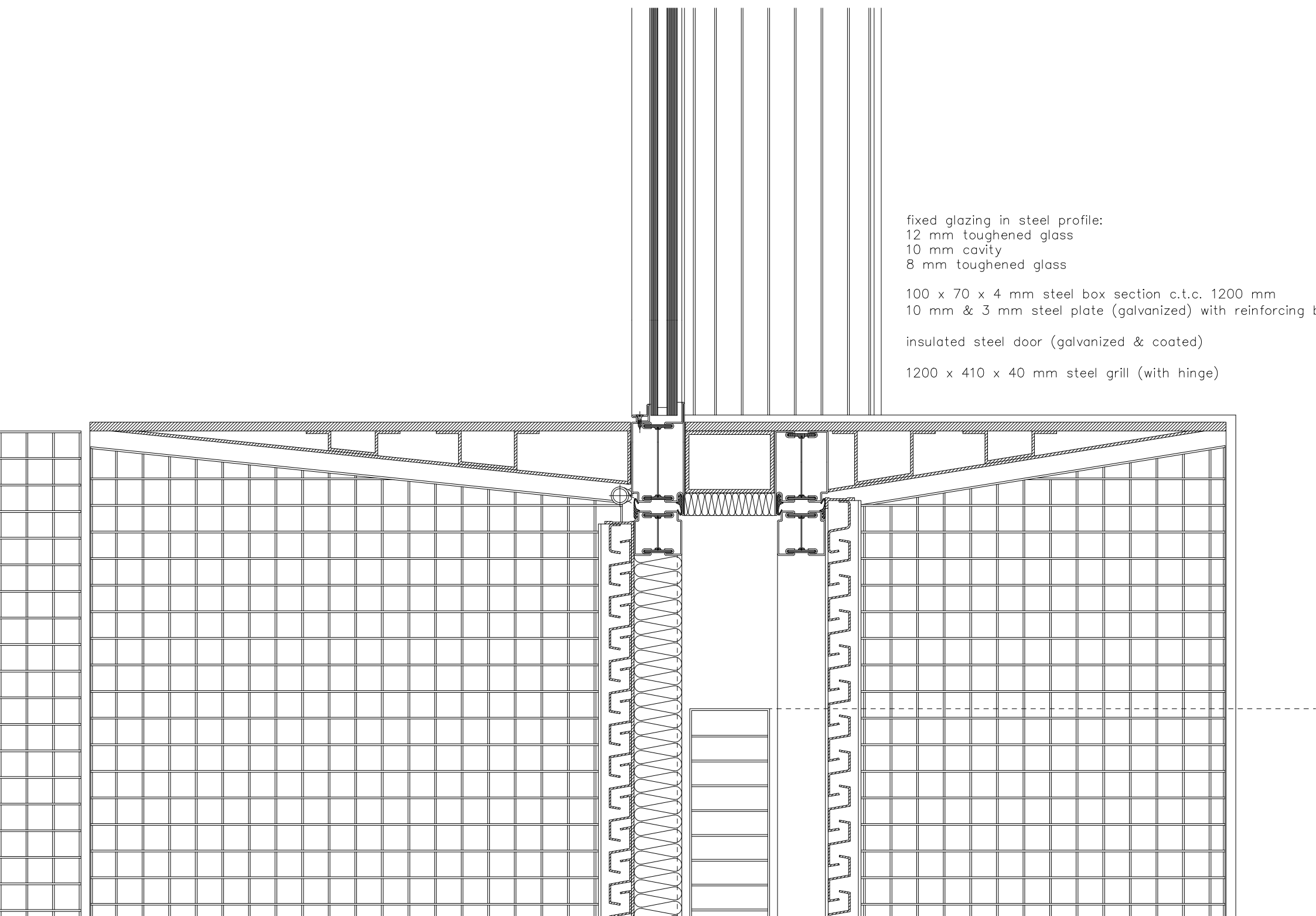
until -1200 mm sand (ground improvement)



1 mm ALE waterproof coating
10 mm composite fabric
380 mm composite (load bearing + insulating)
2 x 10 mm composite fabric

85 mm composite (insulating)
90 x 85 x 120 mm timber fixing block
5 mm felt (tolerance)
40 x 40 x 2 mm steel U-profile

fixed glazing in steel profile:
12 mm toughened glass
10 mm cavity
8 mm toughened glass

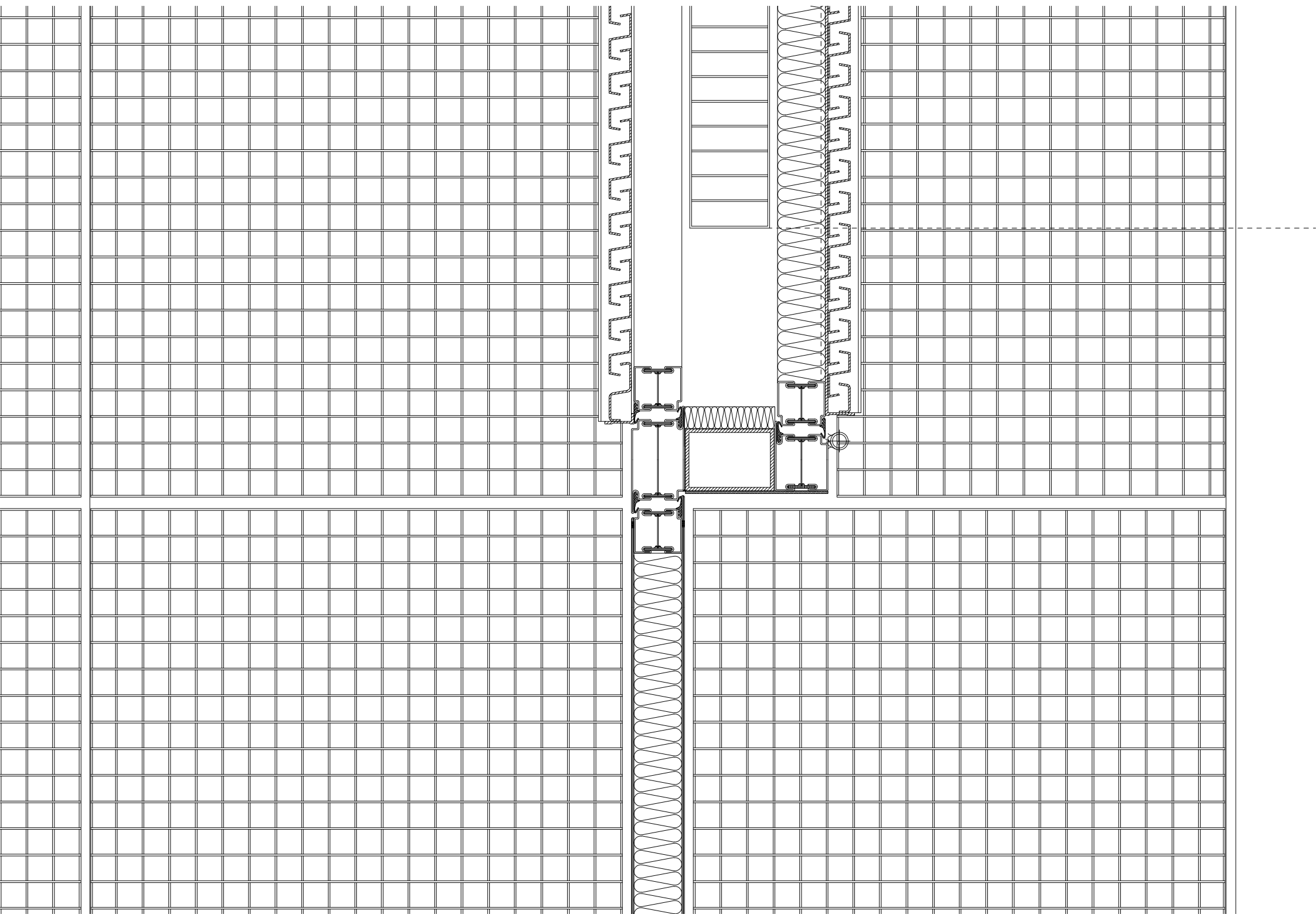
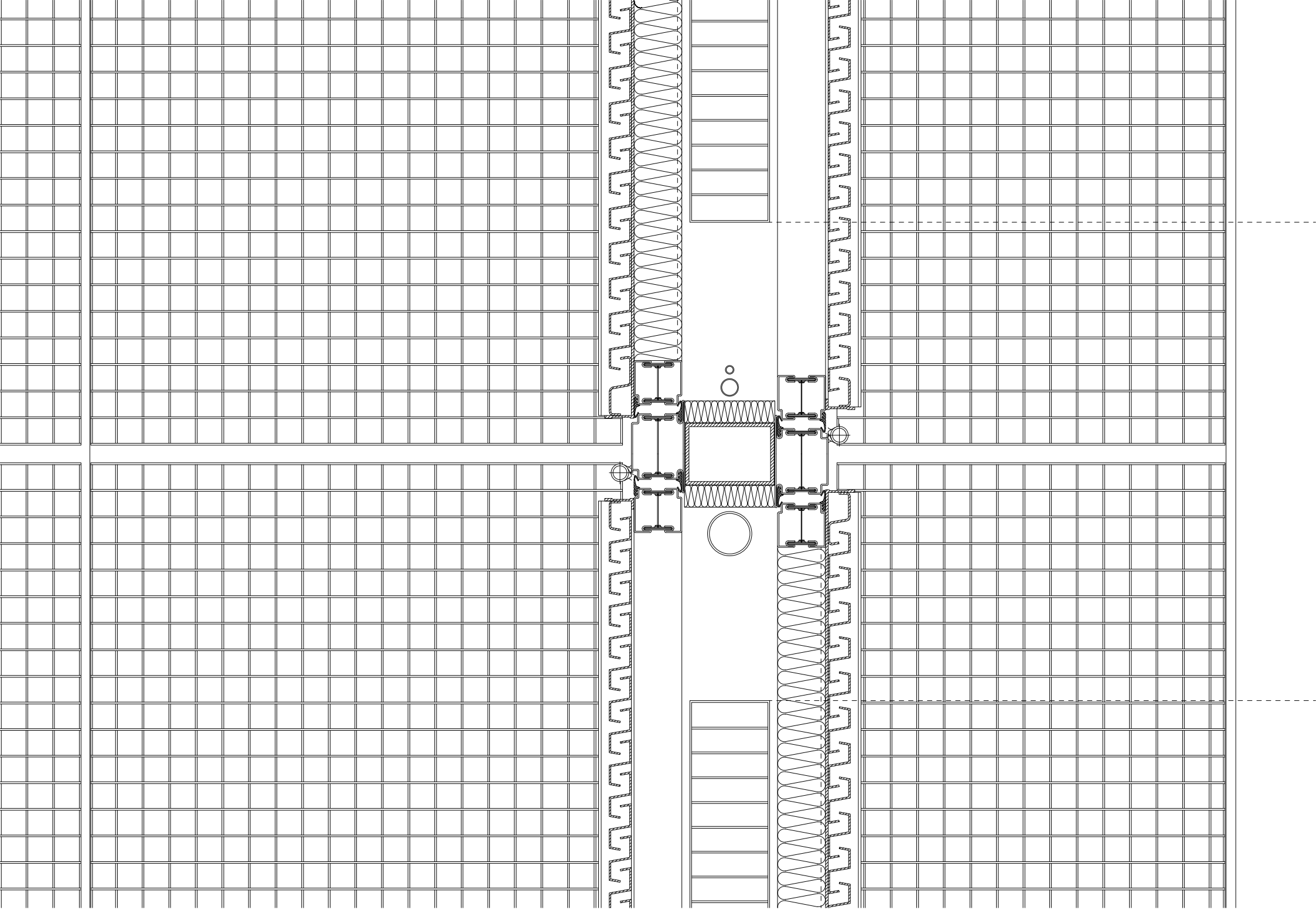


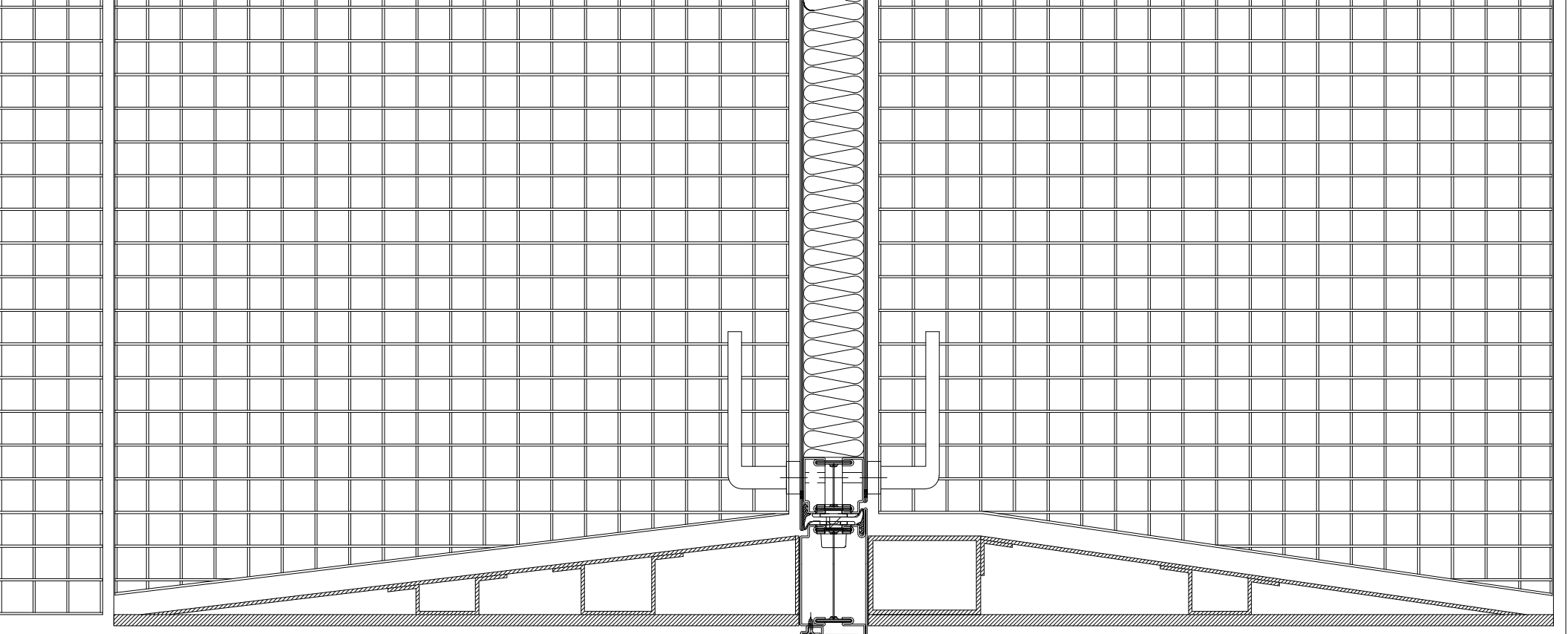
fixed glazing in steel profile:
12 mm toughened glass
10 mm cavity
8 mm toughened glass

100 x 70 x 4 mm steel box section c.t.c. 1200 mm
10 mm & 3 mm steel plate (galvanized) with reinforcing bars

insulated steel door (galvanized & coated)

1200 x 410 x 40 mm steel grill (with hinge)

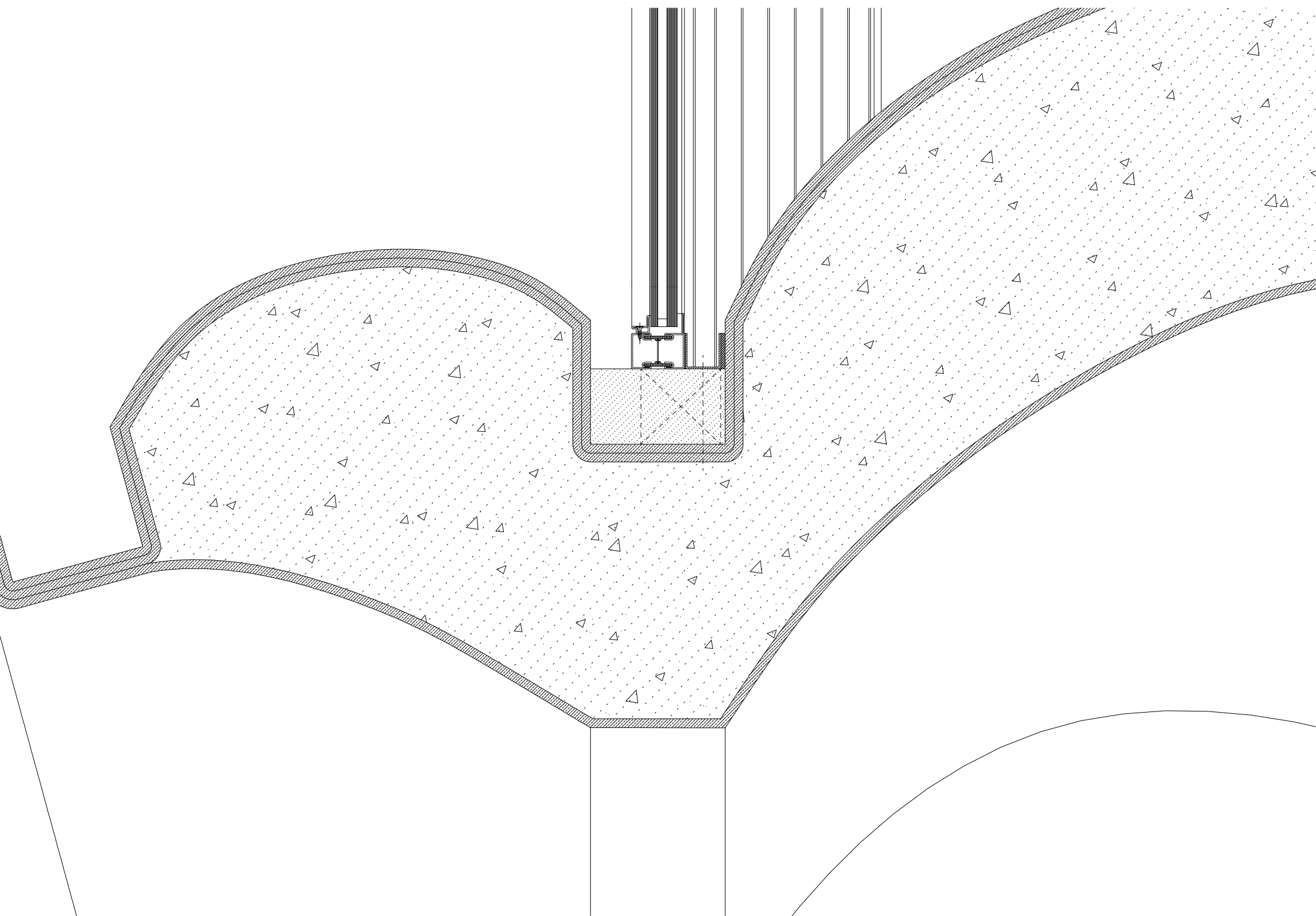


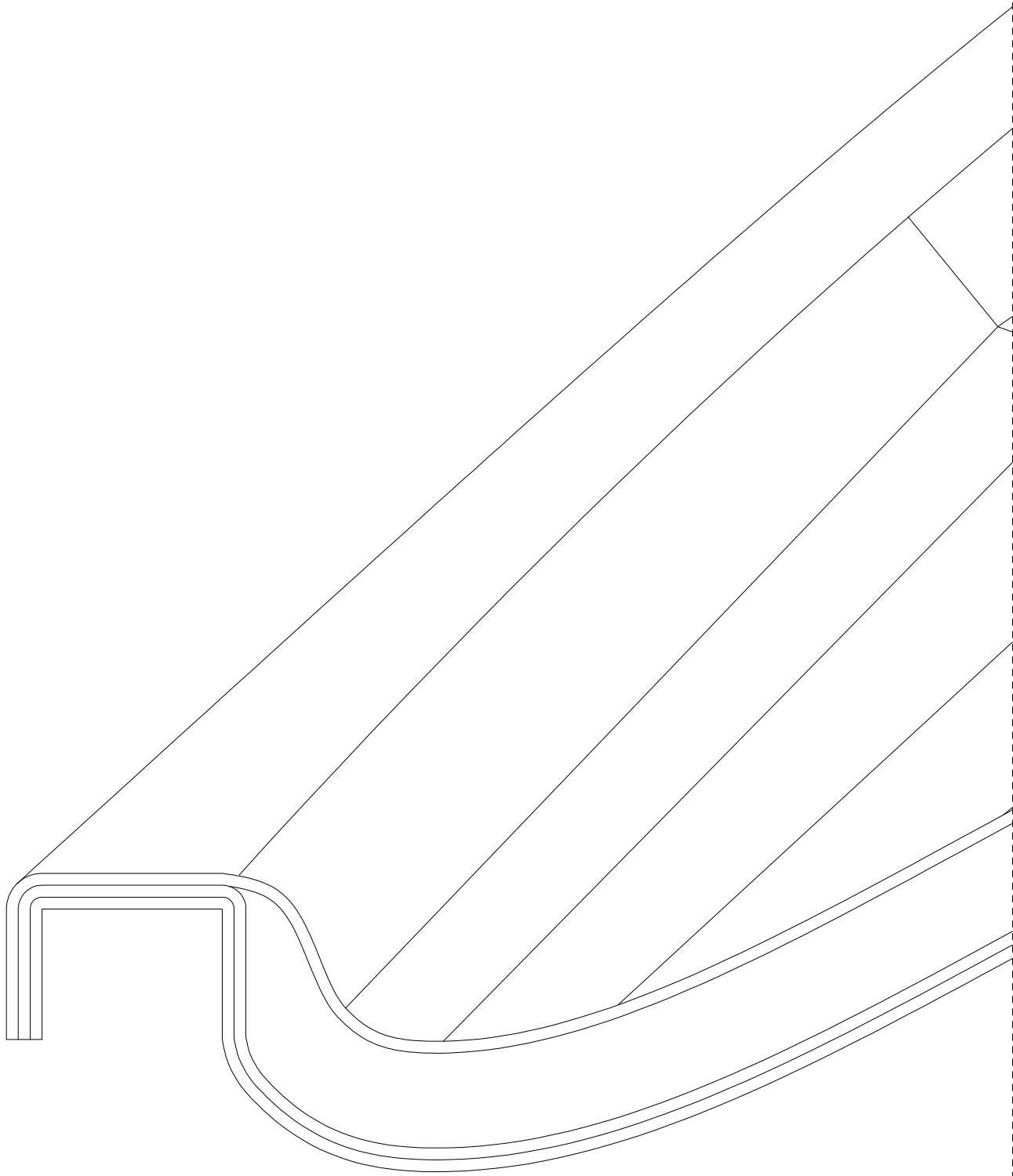


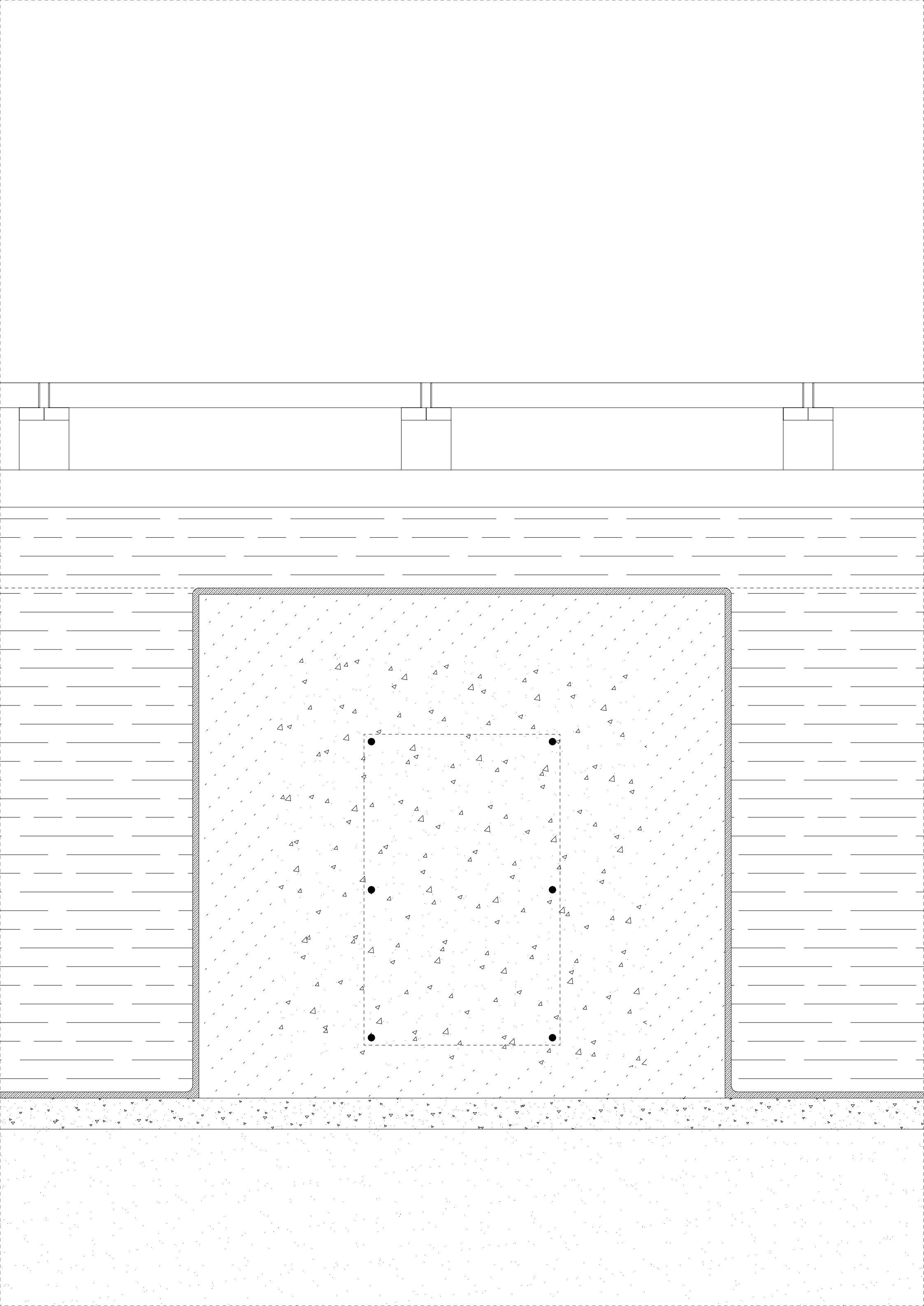
1200 x 600 x 40 mm steel grill (with hinge)

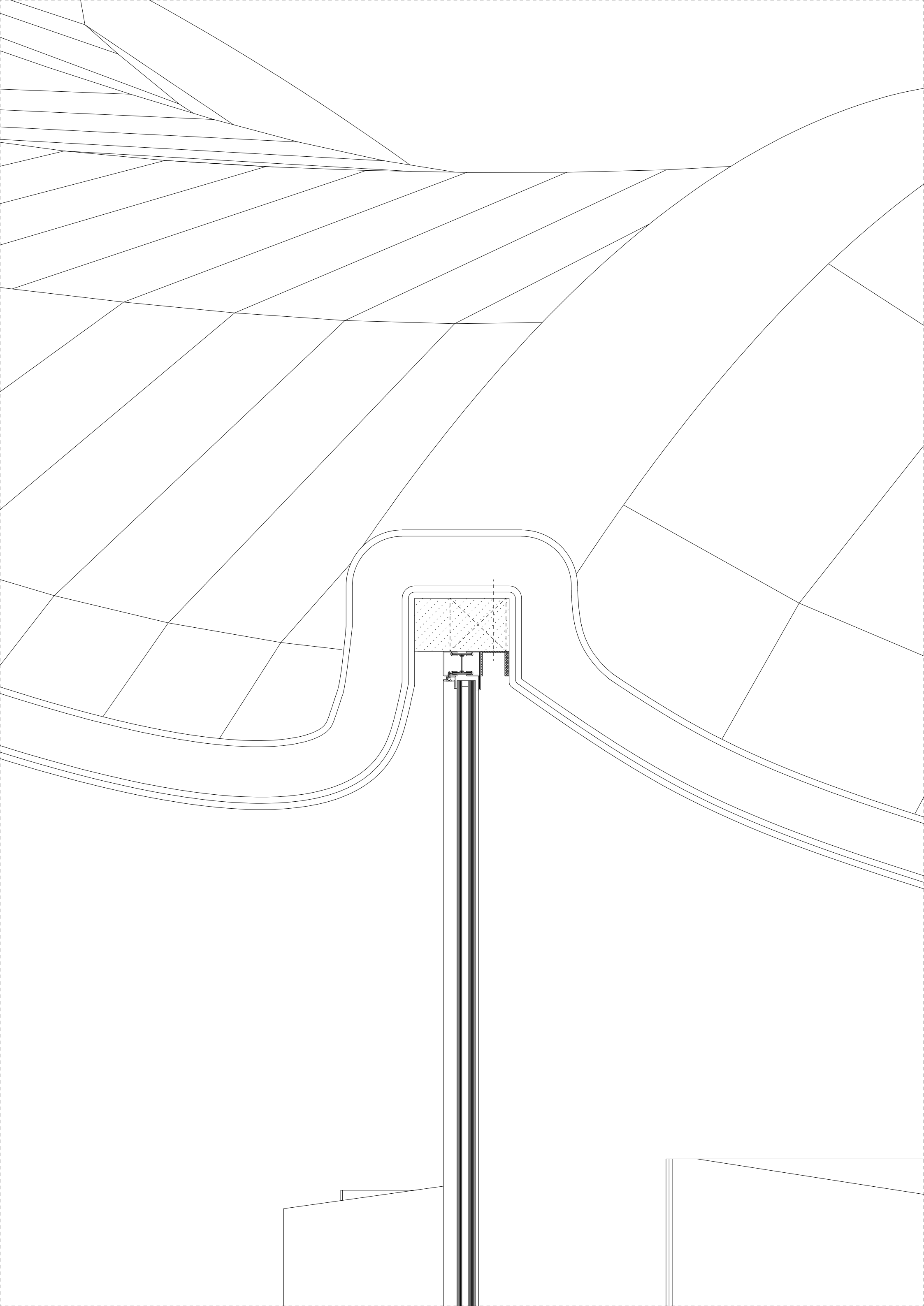
insulated steel door (galvanized & coated)
100 x 70 x 4 mm steel box section c.t.c. 1200 mm
10 mm & 3 mm steel plate (galvanized) with reinforcing

fixed glazing in steel profile:
12 mm toughened glass
10 mm cavity
8 mm toughened glass









--	--	--	--	--	--

