

TRASH INTO TREASURE

Designing a **Circular Public Condenser** in Bispebjerg, Copenhagen

Marit Smit

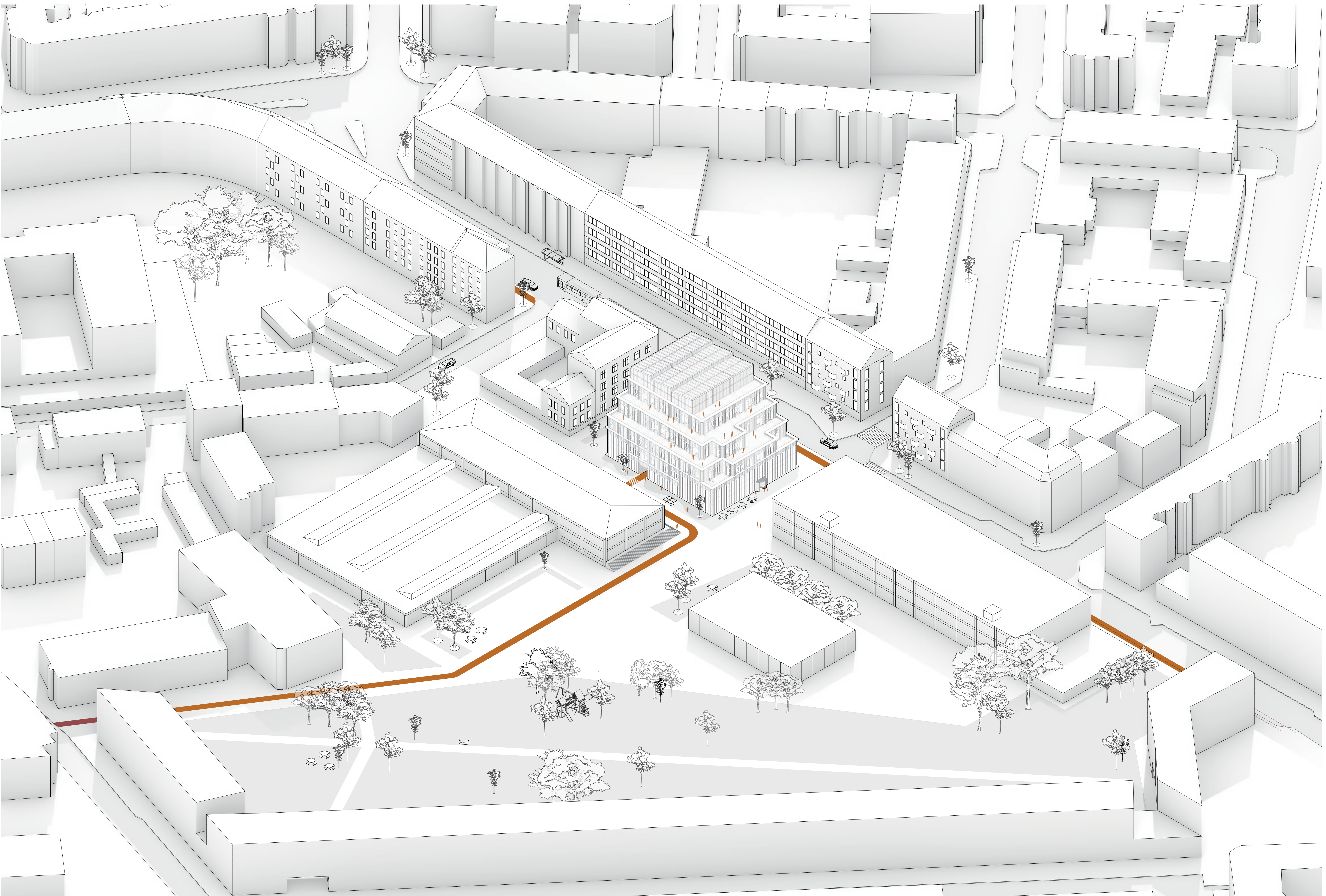
Graduation studio 'Public Condenser in Copenhagen'

Architecture and Public Building | TU Delft

Paul Kuitenbrouwer, Stefano Corbo, Elina Karanastasi



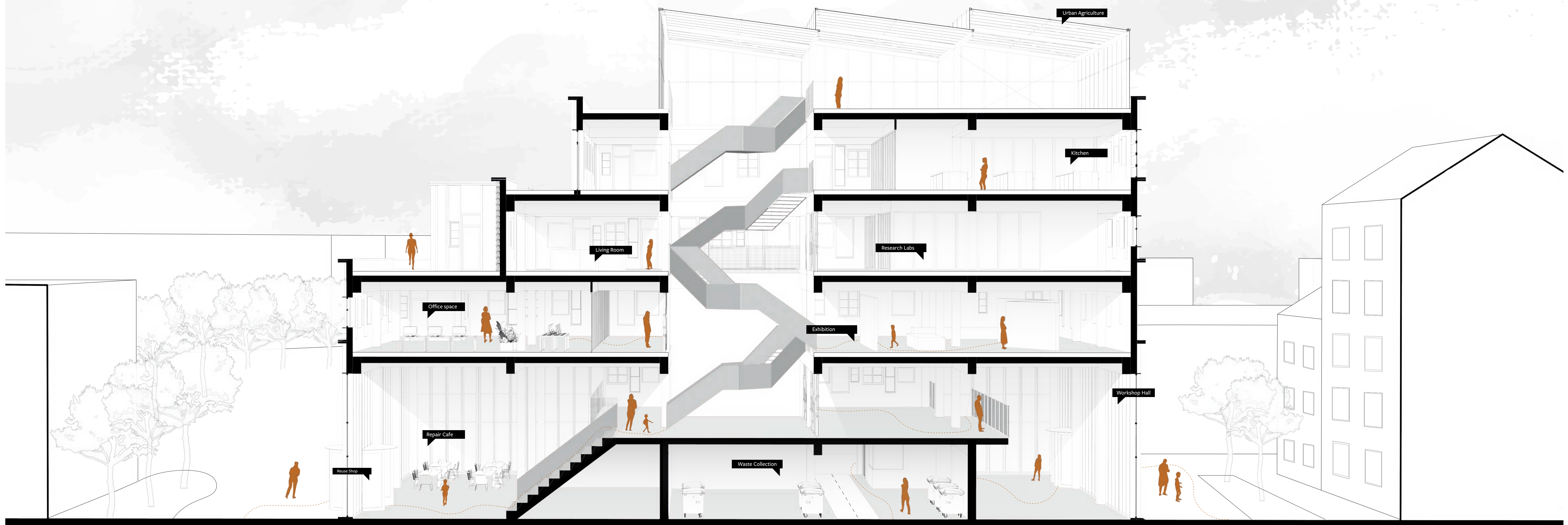
View from Frederiksborgvej - Entrance



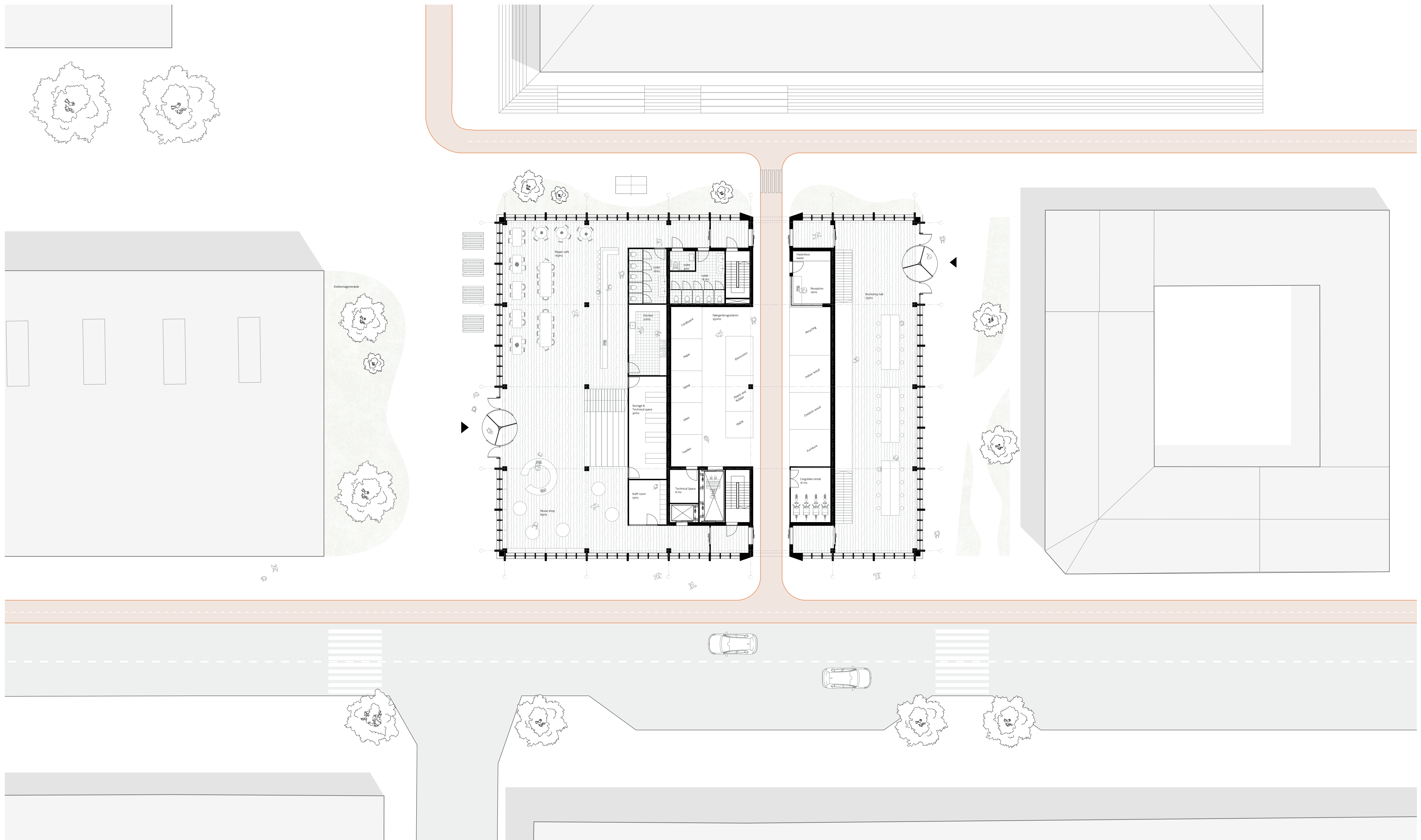
Axonometric view

TRASH INTO TREASURE

Marit Smit



Section



Floorplan - Ground floor



Waste collection and recycling centre



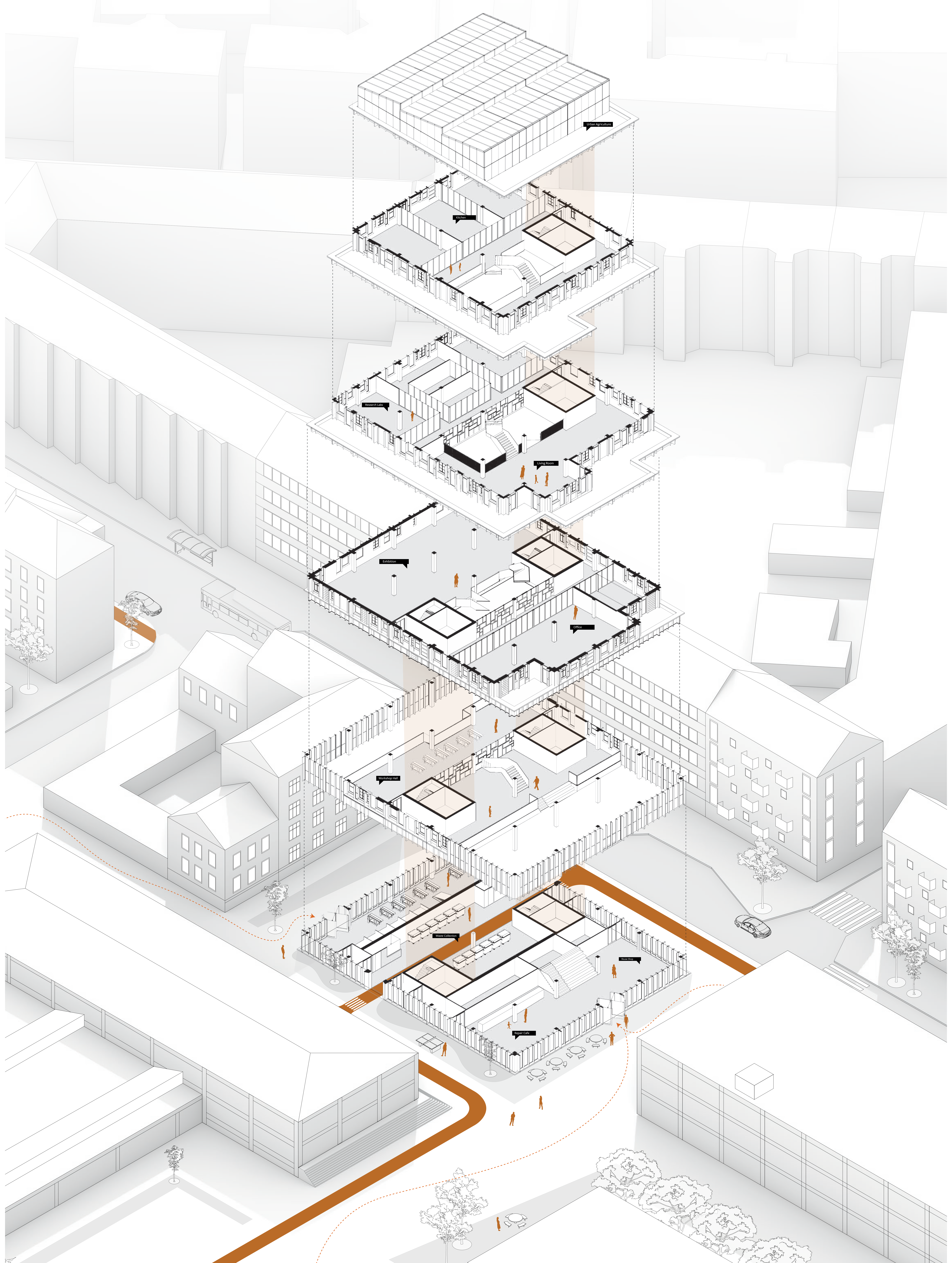
Central stairs at the heart of the building



Workshop Hall for Material Reuse and Recycling

TRASH INTO TREASURE

Marit Smit

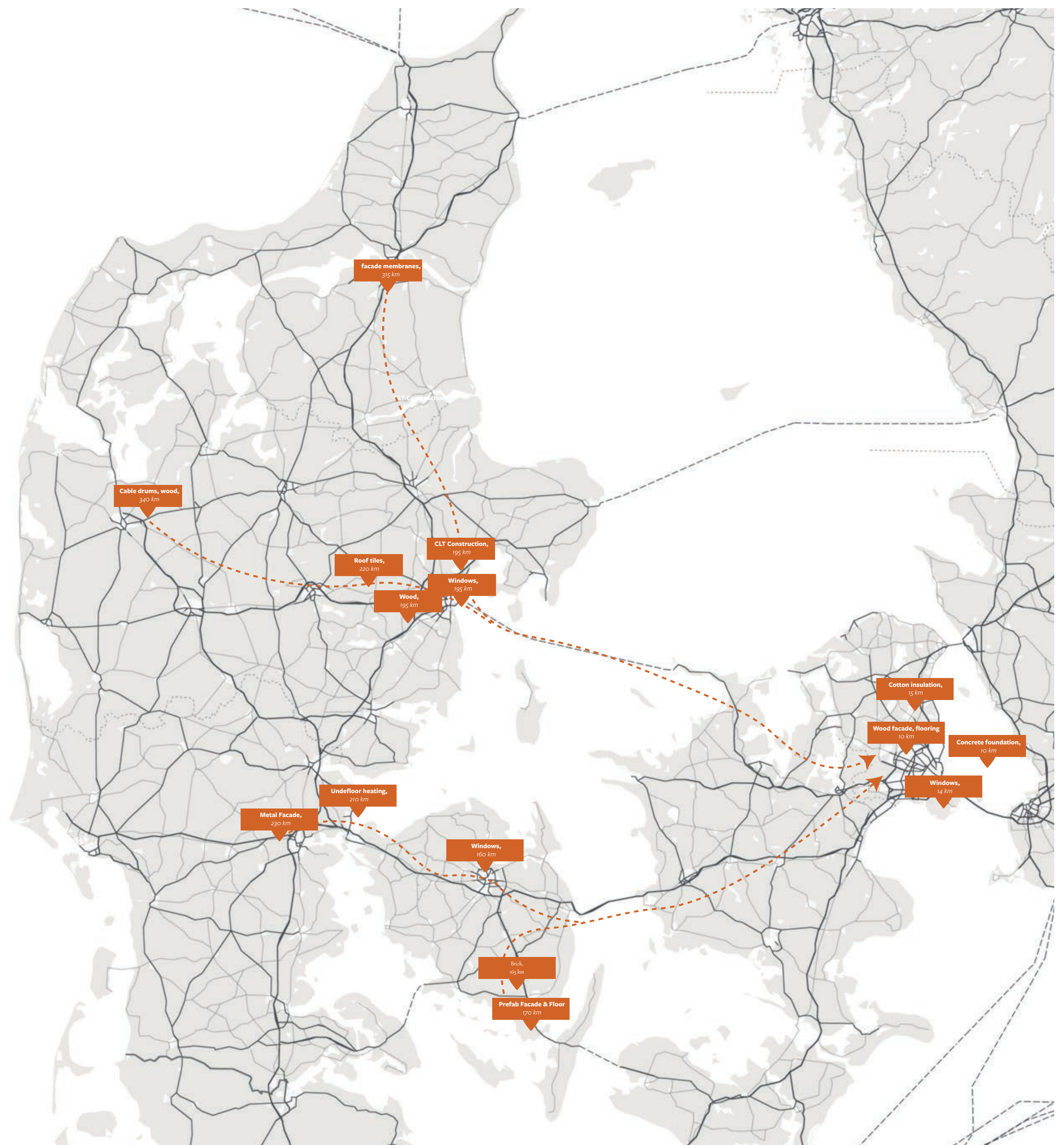
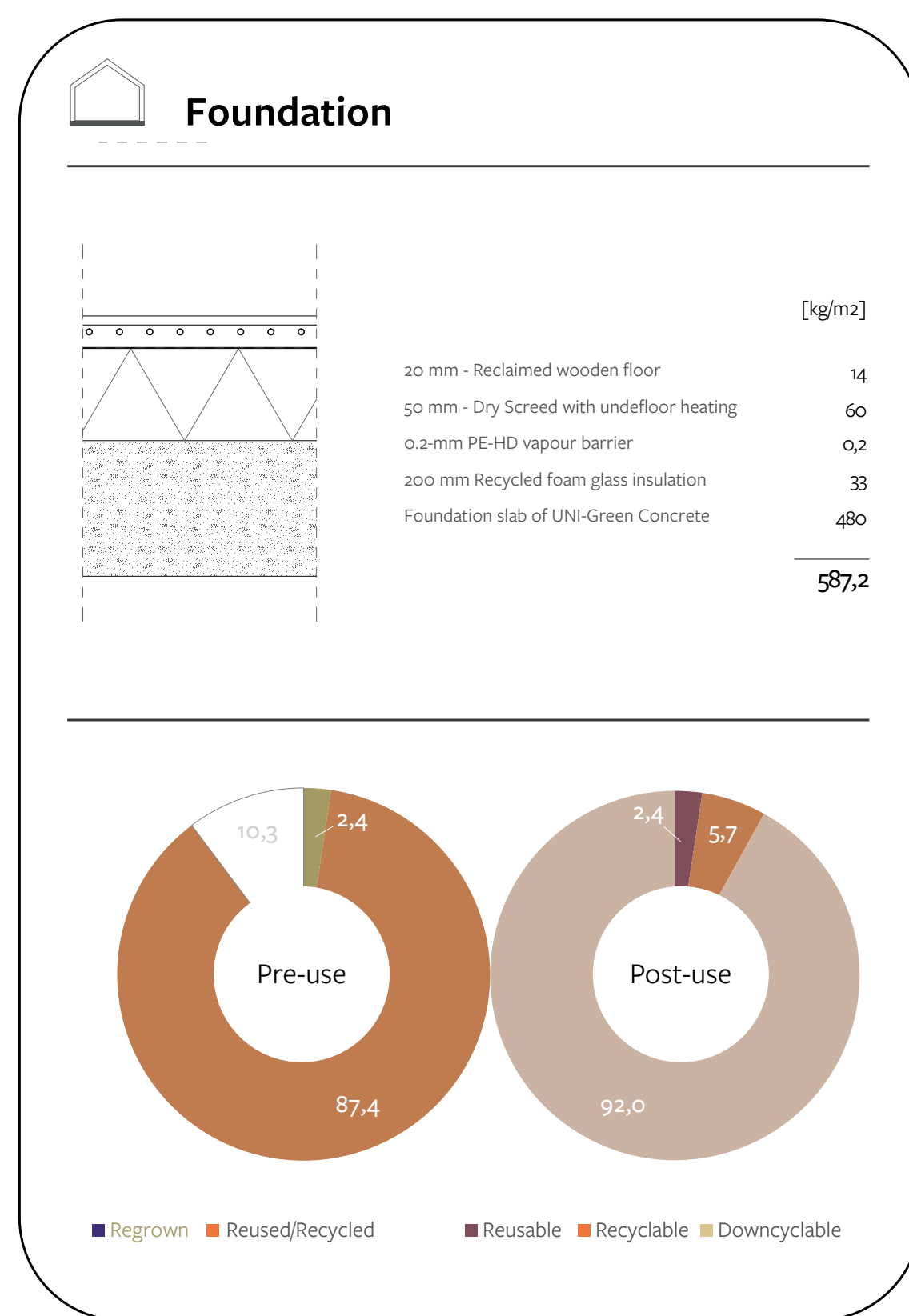
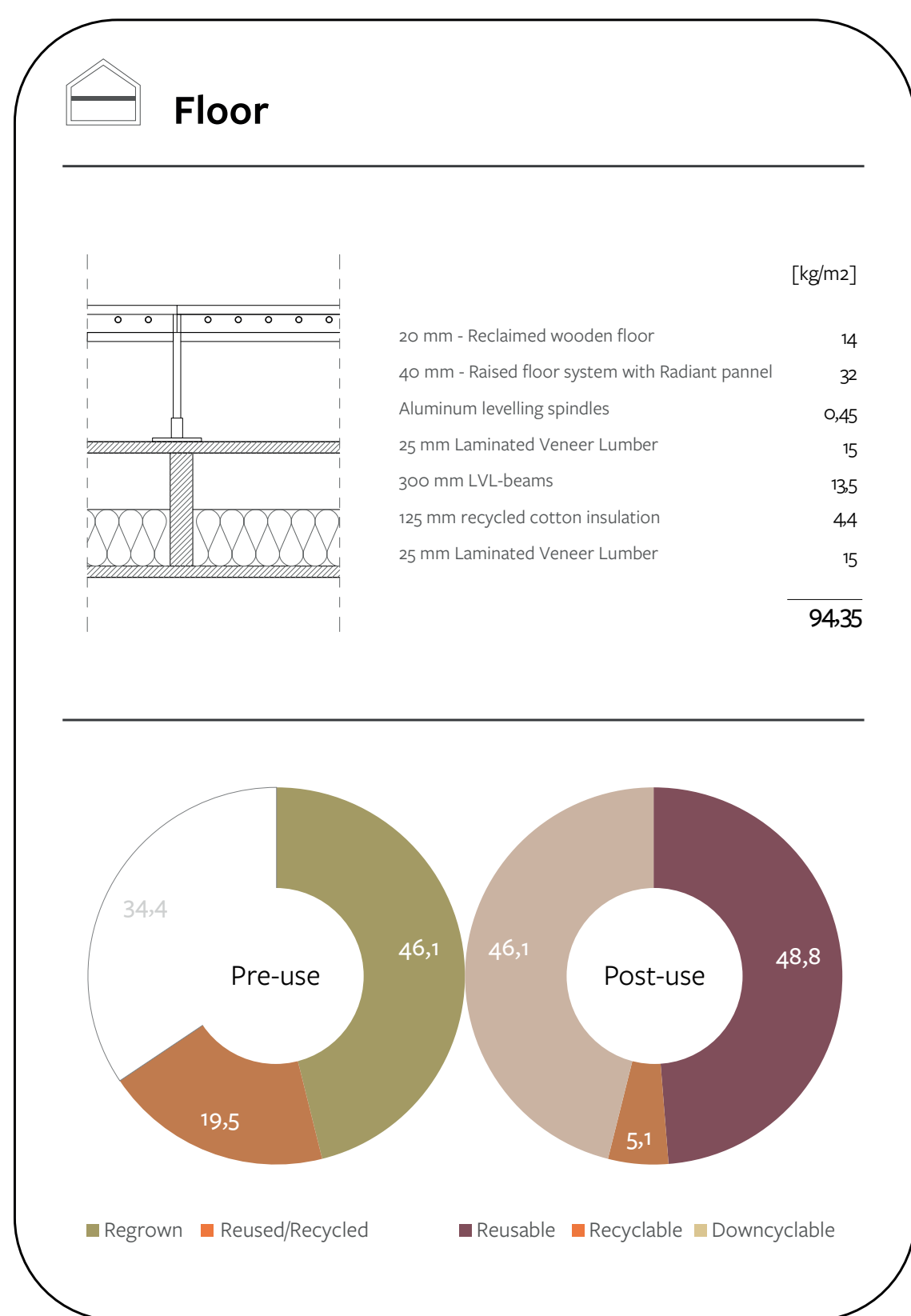
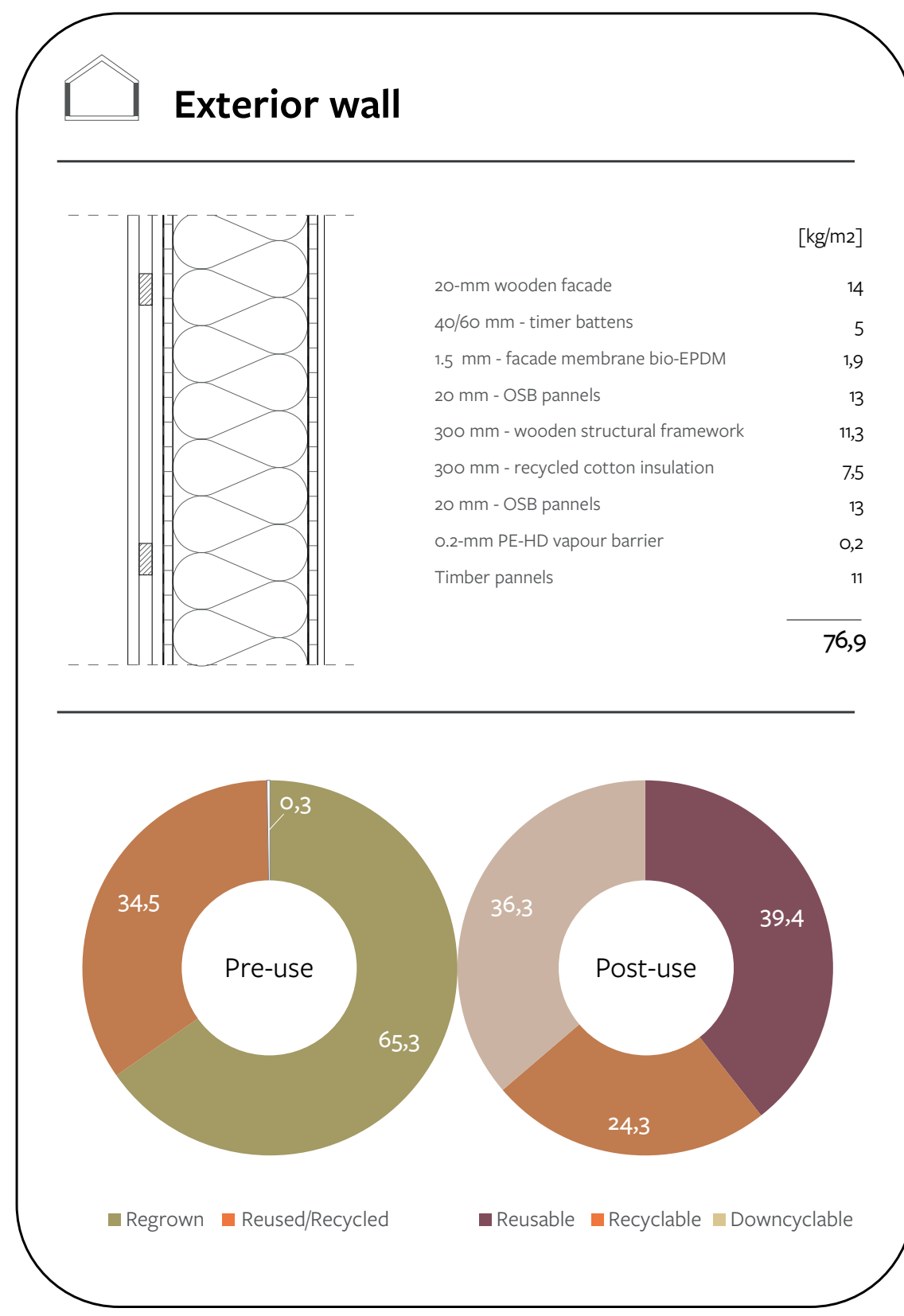
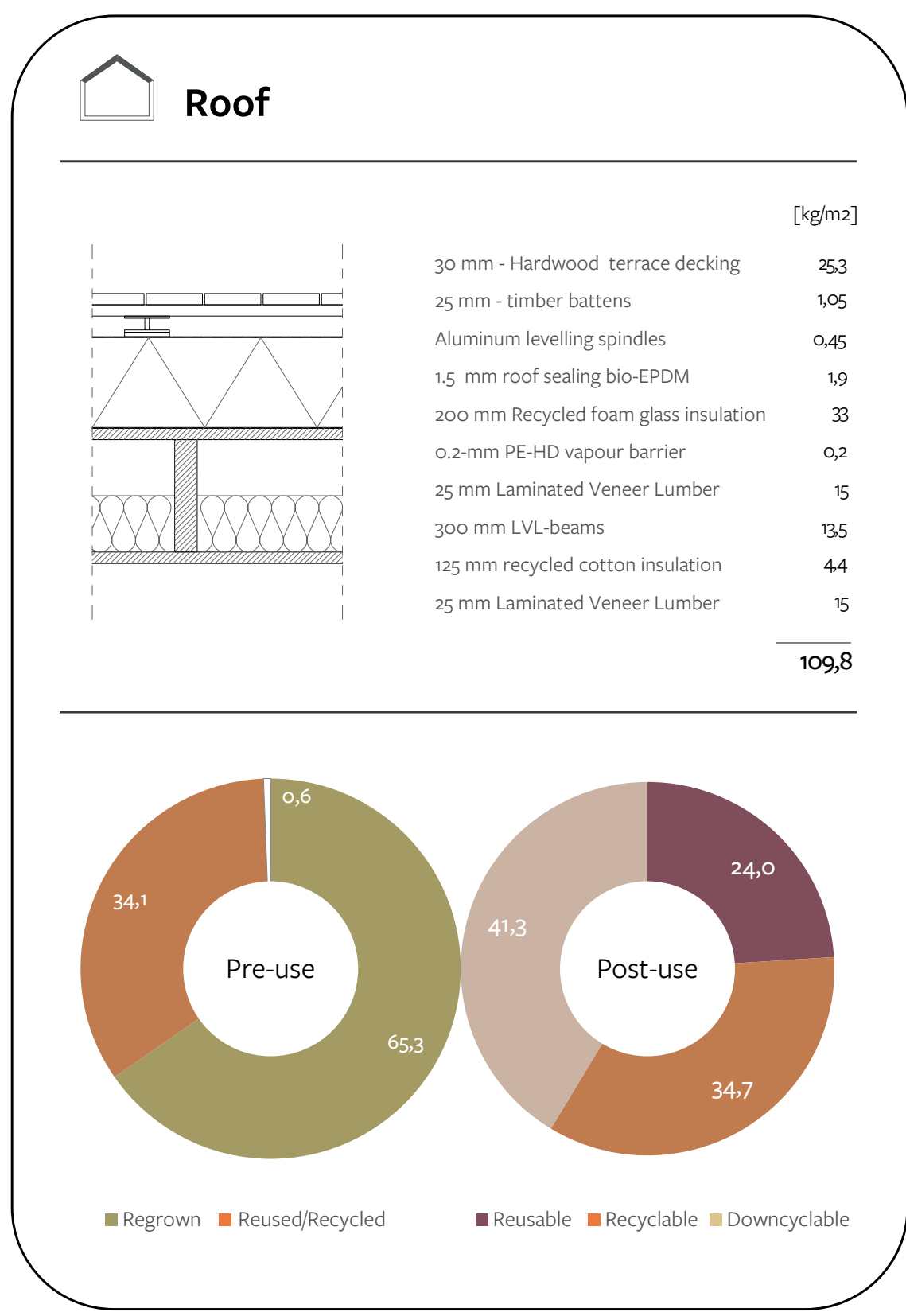


TRASH INTO TREASURE

Marit Smit

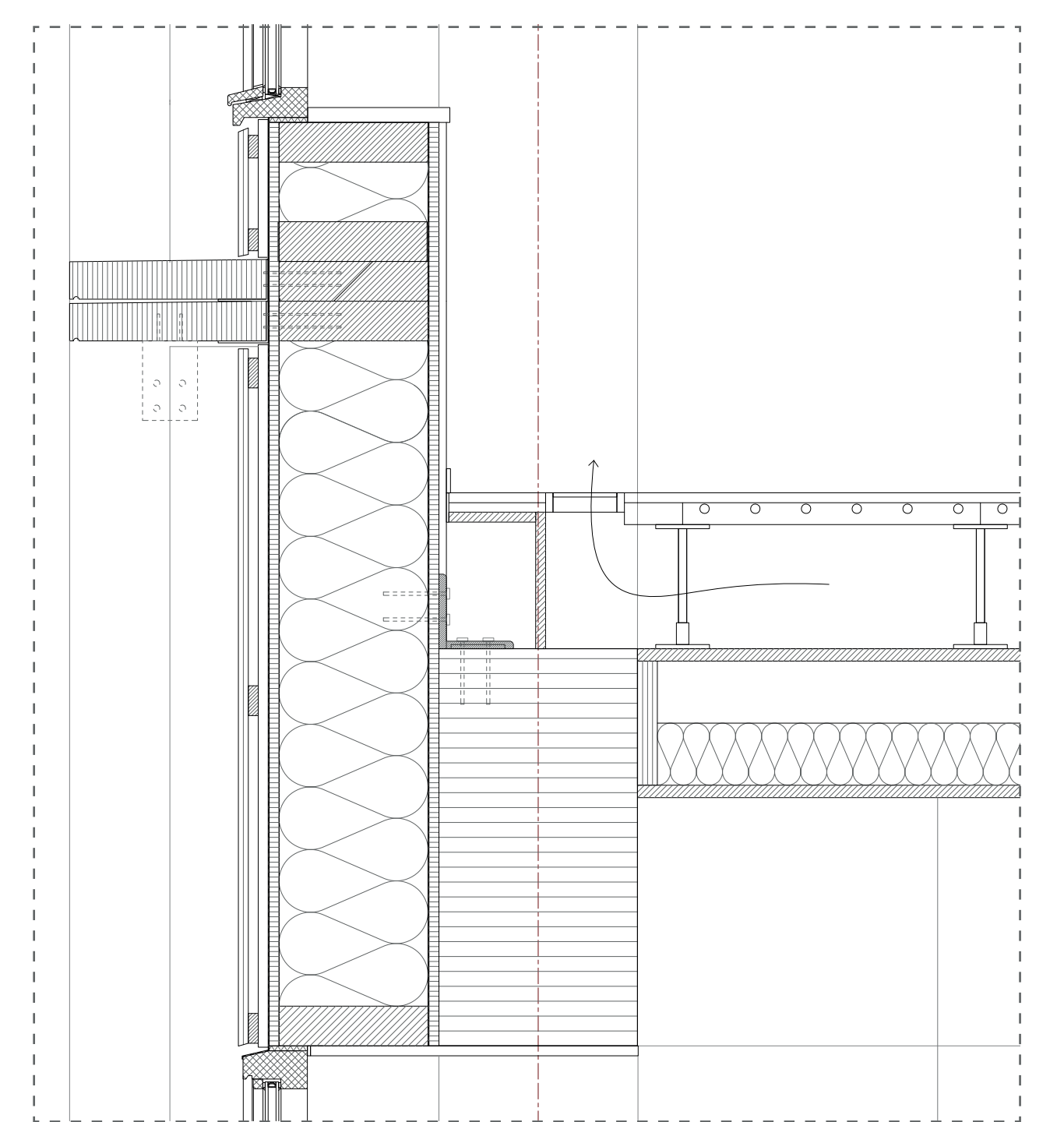
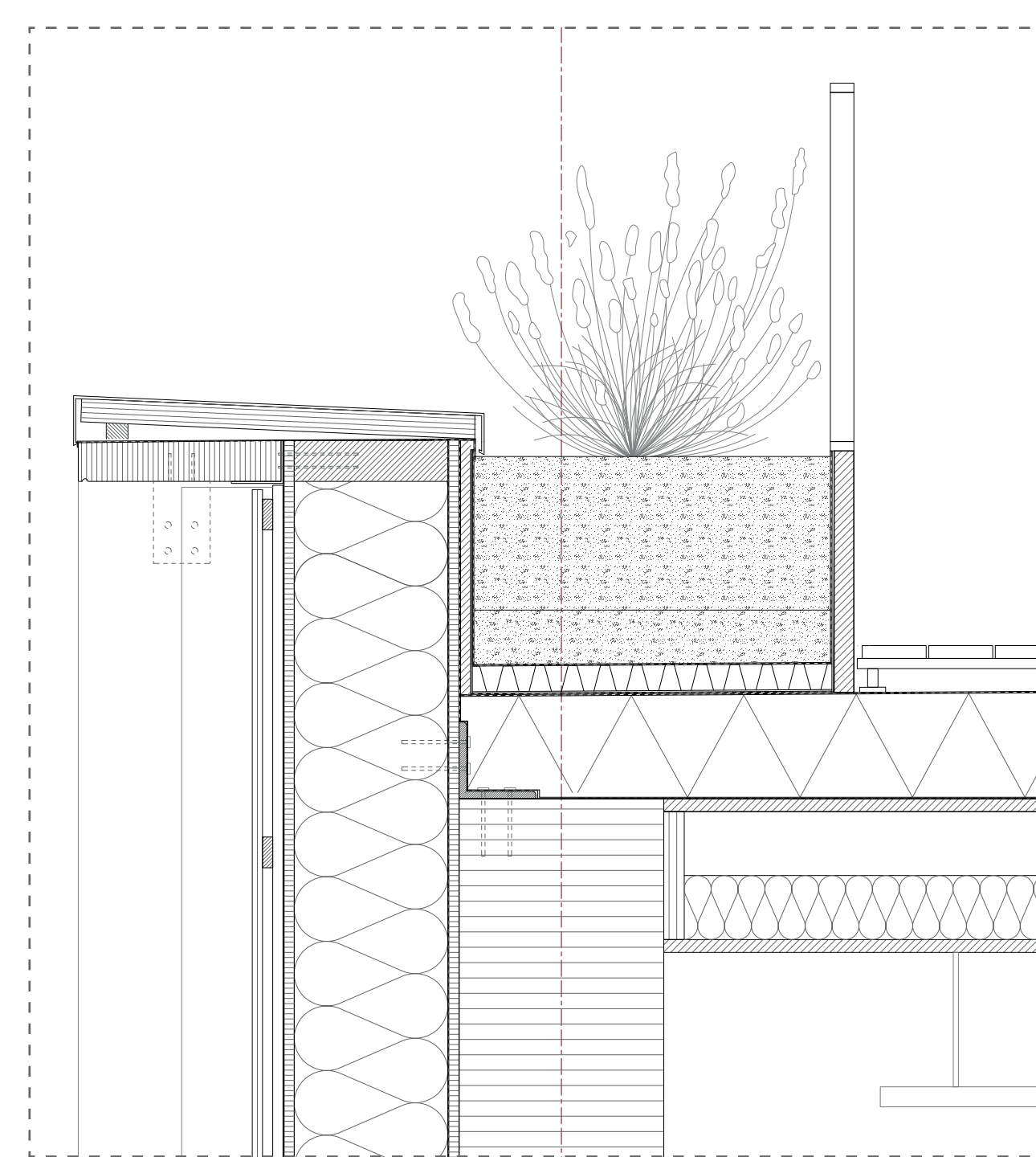
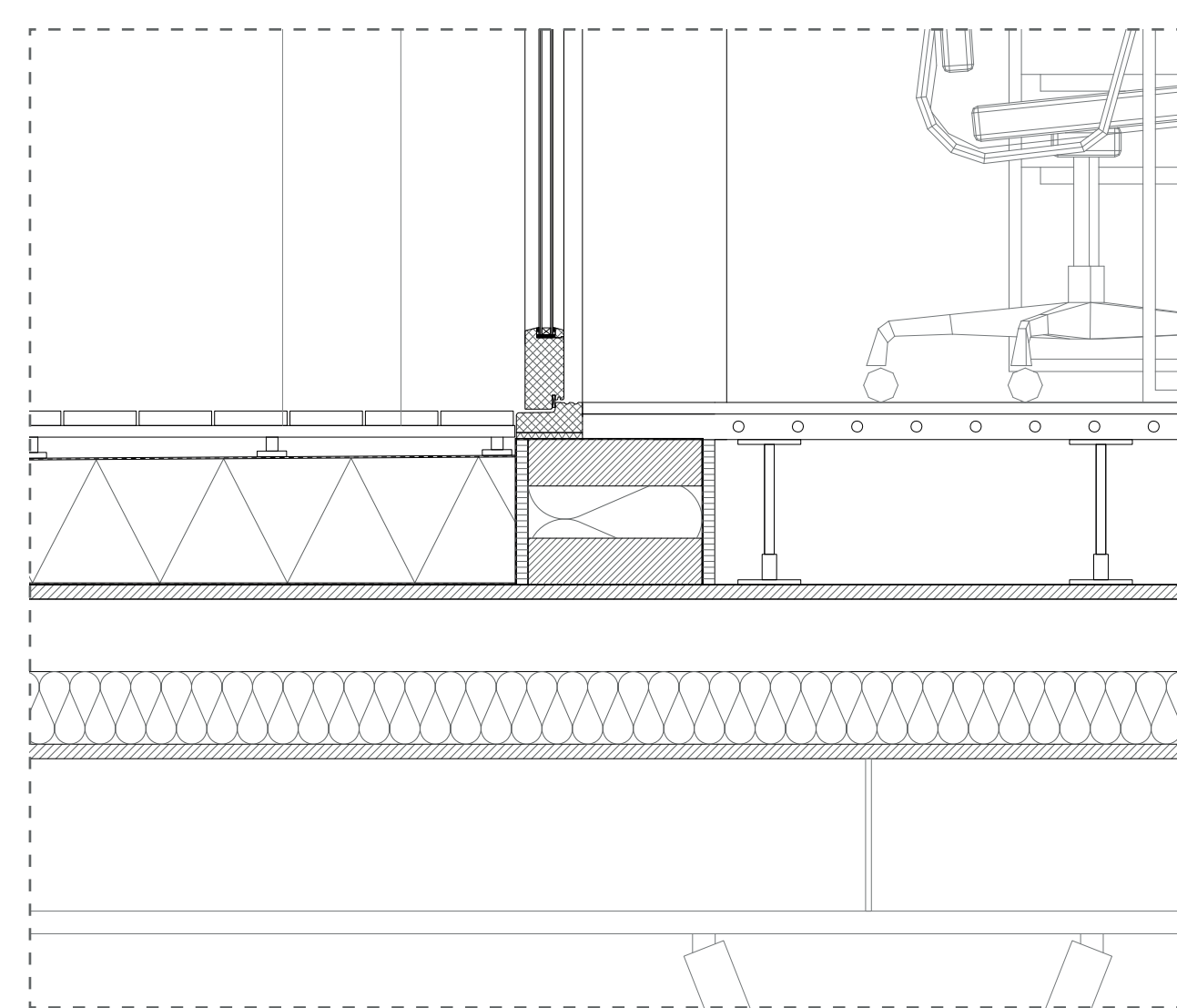
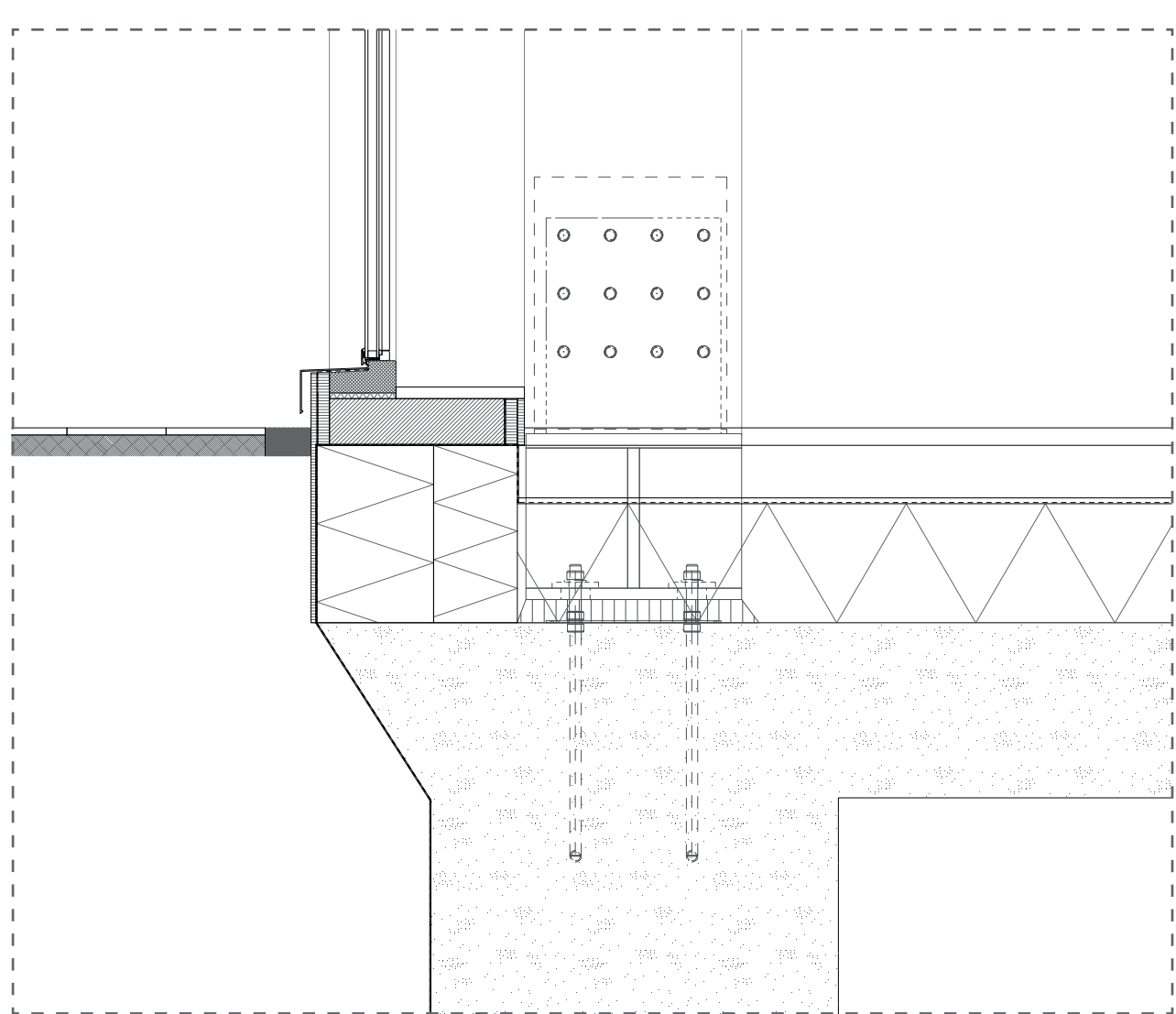
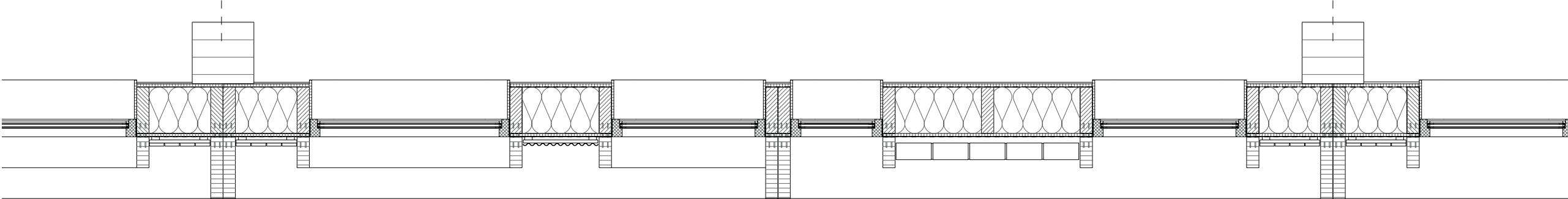
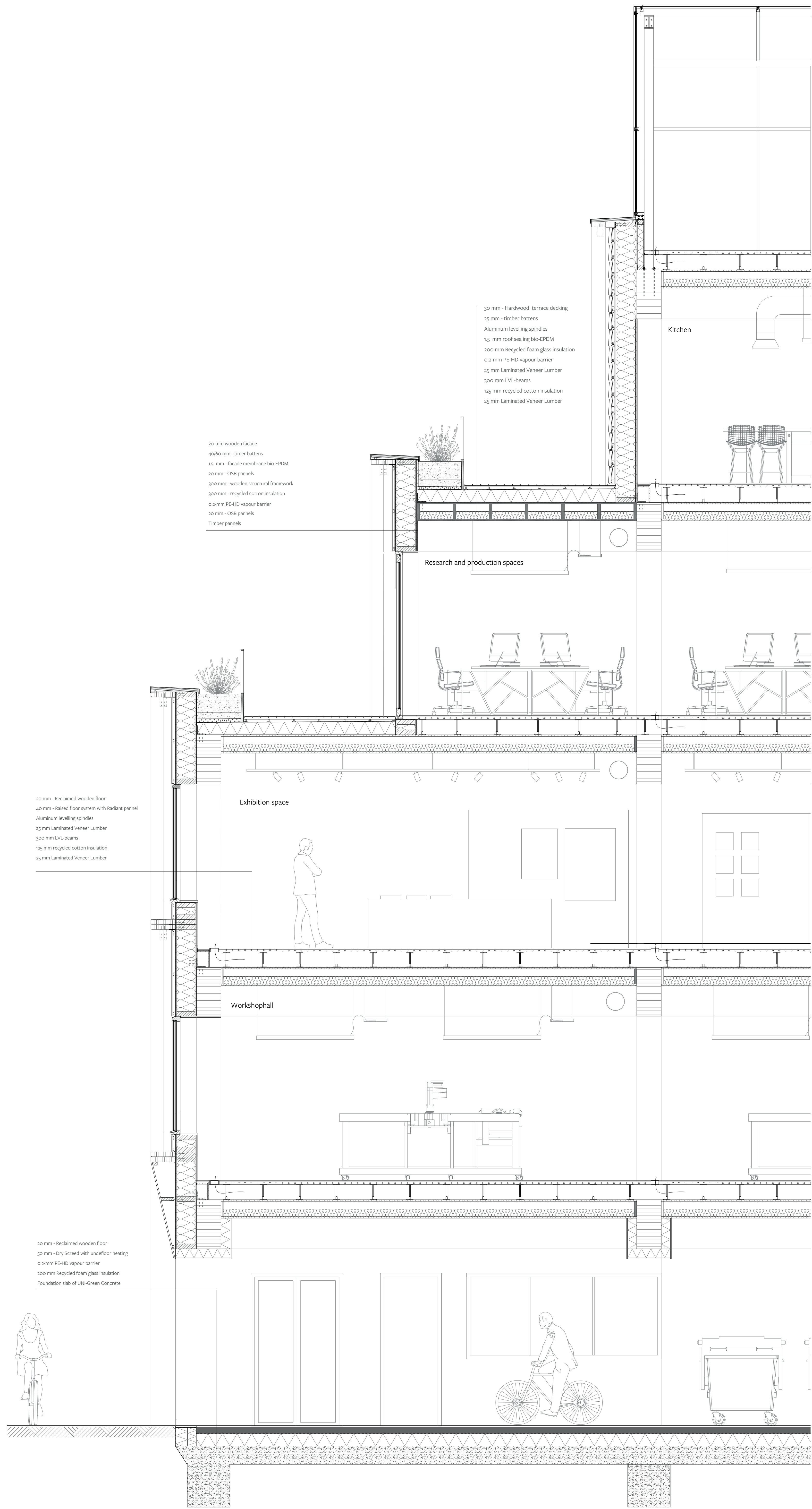


View from Frederiksborgvej



TRASH INTO TREASURE

Marit Smit



TRASH INTO TREASURE

Marit Smit



20 mm wooden facade
40/60 mm - timber battens
1.5 mm - facade membrane bio EPDM
20 mm - OSB panels
300 mm - wooden structural framework
300 mm - recycled cotton insulation
0.2 mm PE-HD vapour barrier
20 mm - OSB panels
Timber panels

20 mm - Reclaimed wooden floor
40 mm - Raked floor system with Radiant panel
Aluminum leveling spindles
25 mm Laminated Veneer Lumber
300 mm LVL beams
145 mm recycled cotton insulation
25 mm Laminated Veneer Lumber

20 mm OSB board

PE-HD vapour barrier

recycled cotton insulation

wooden structural frame with reused windows

OSB panel with bio-EPDM facade membrane

Timber facade slats

Reused brick cladding

Reclaimed wood cladding

Reused roof tiles cladding