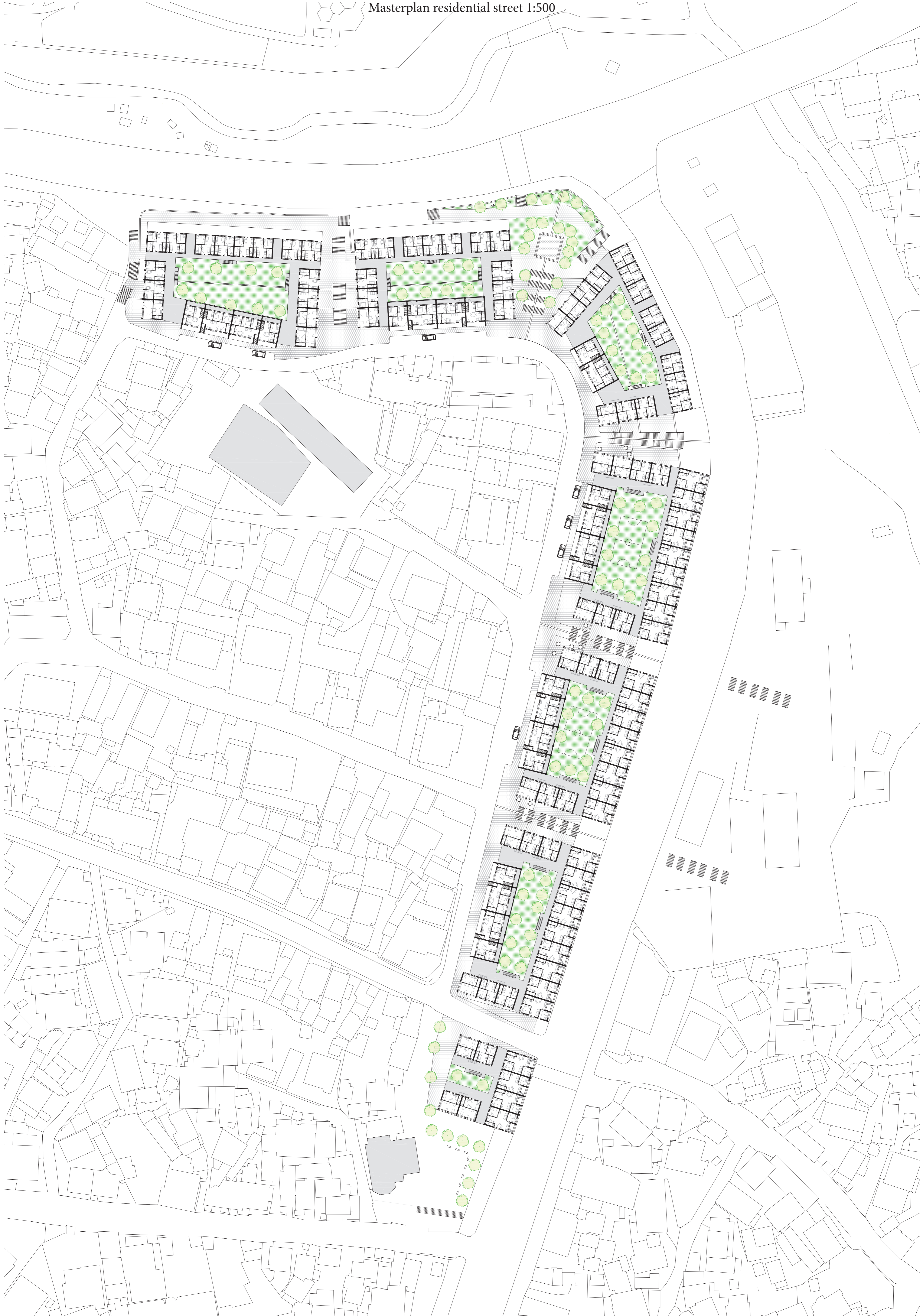
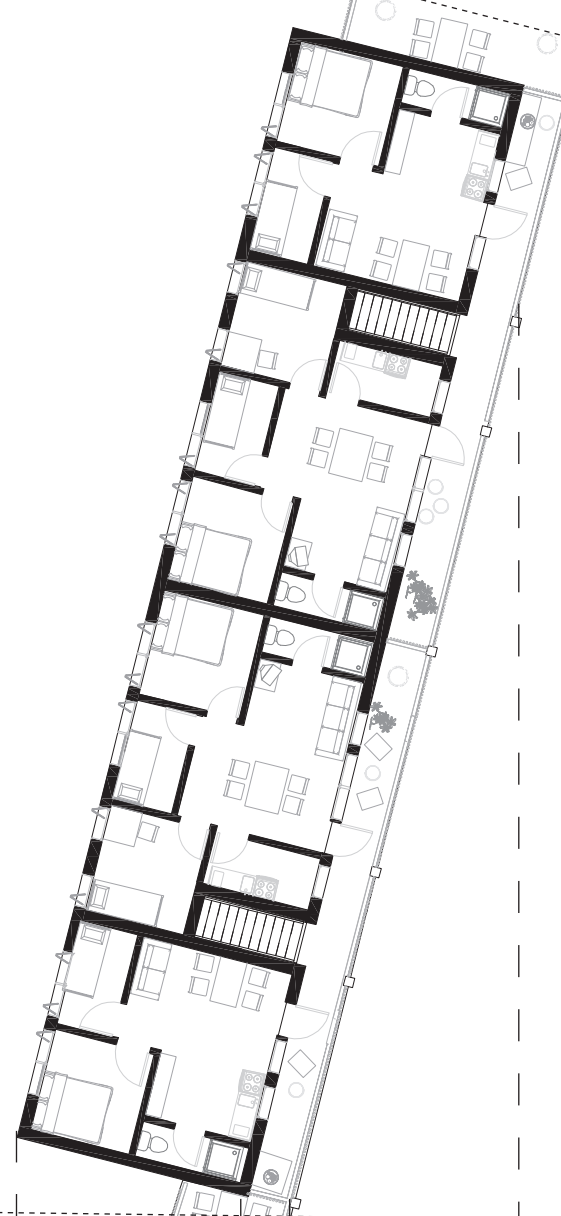


Section block 1:50

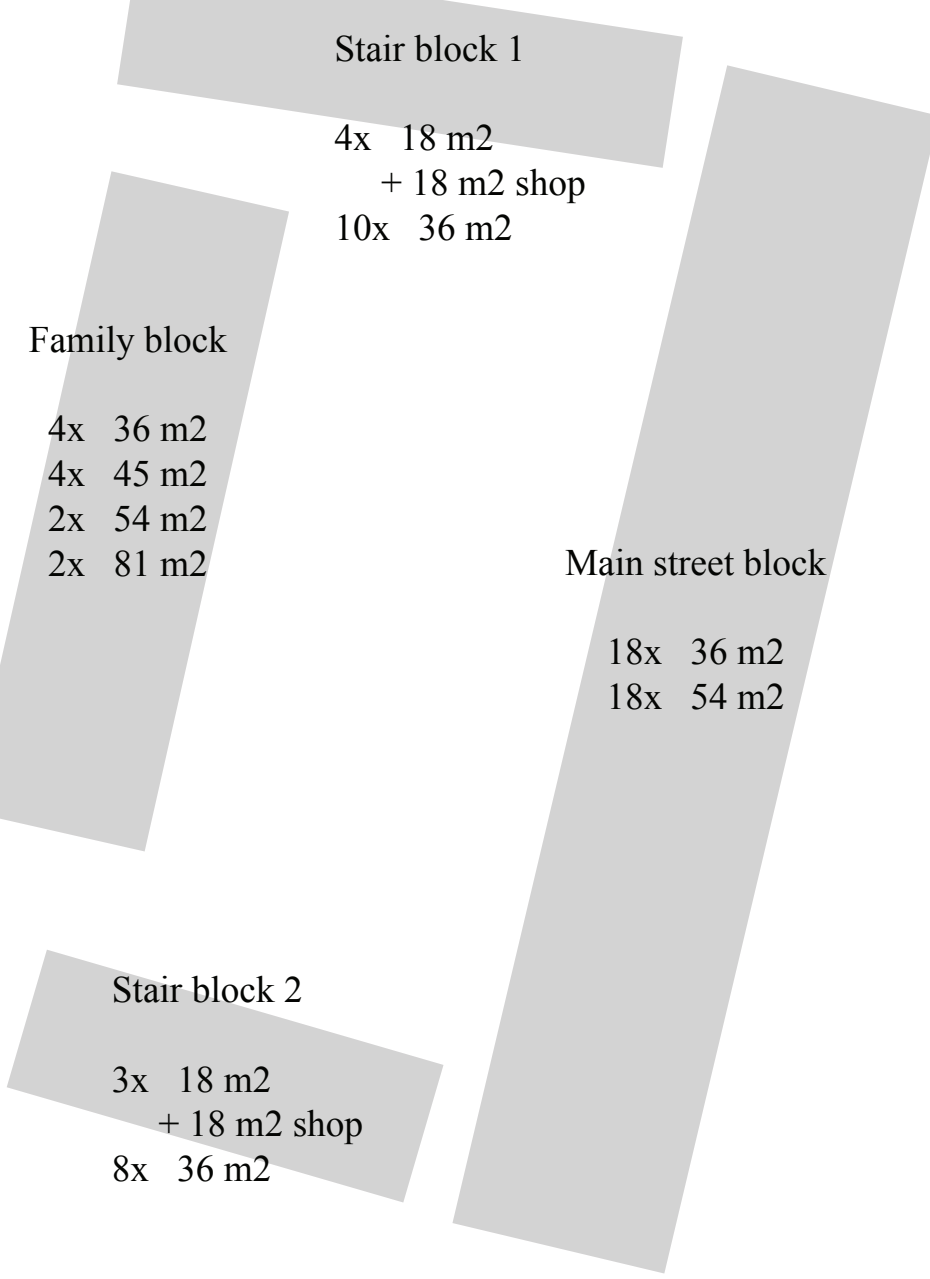


Plan 2nd floor family housing 1:200

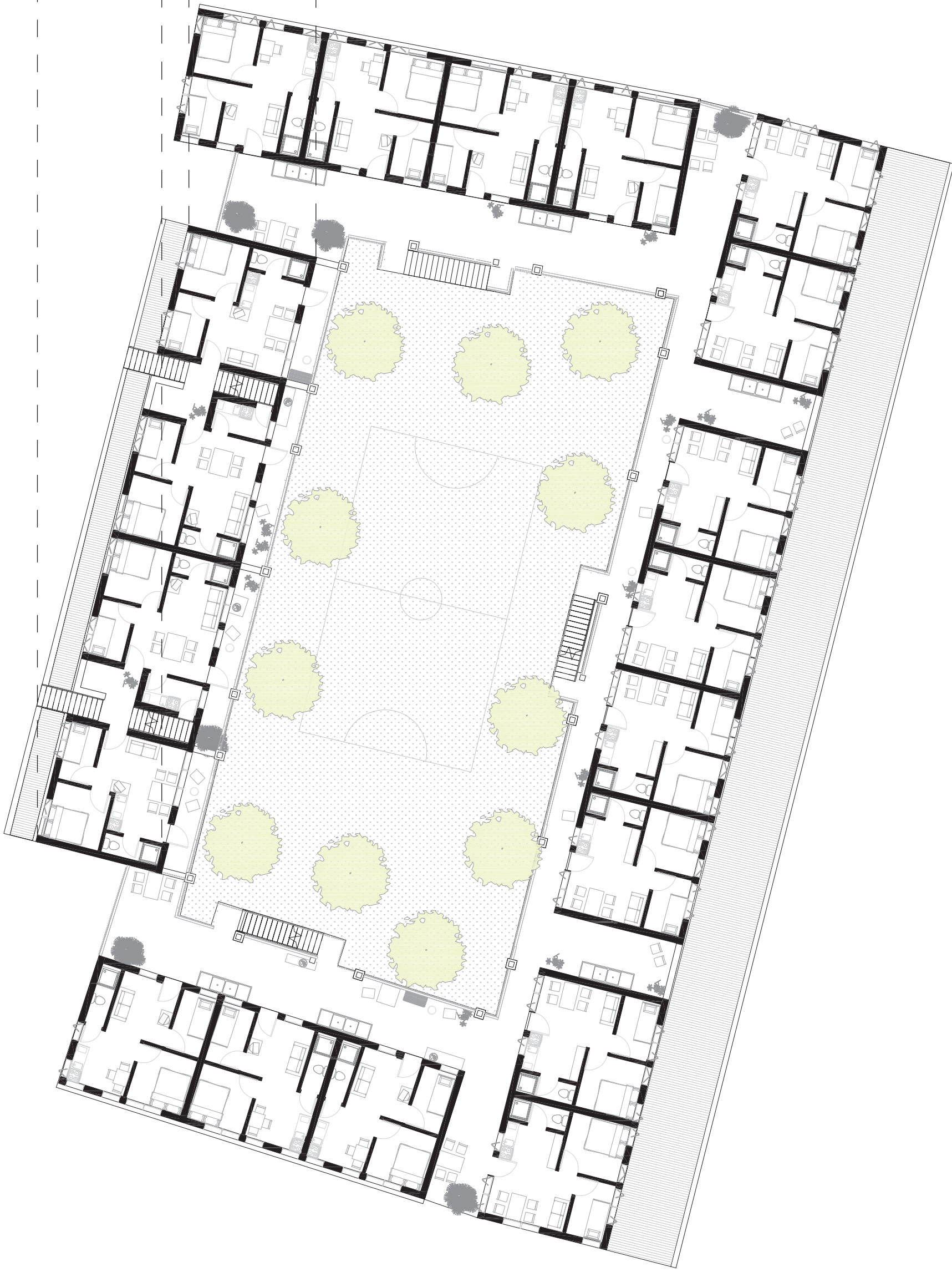


Totaal = 73 units

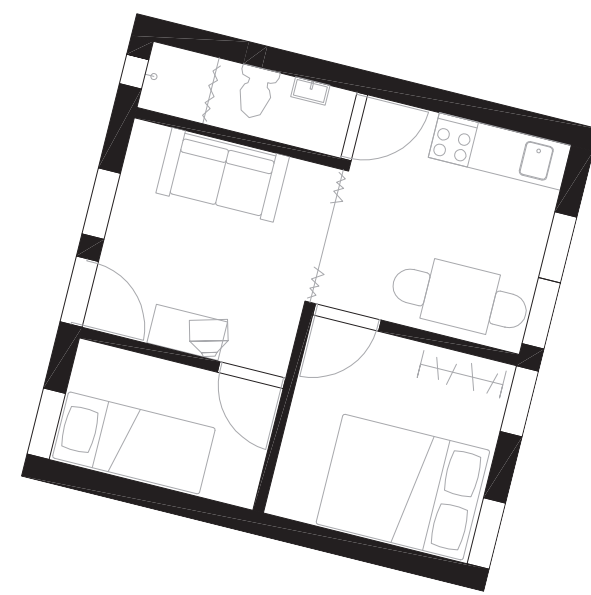
DENSITY = +/- 260 units/ha



Plan 1st floor 1:200



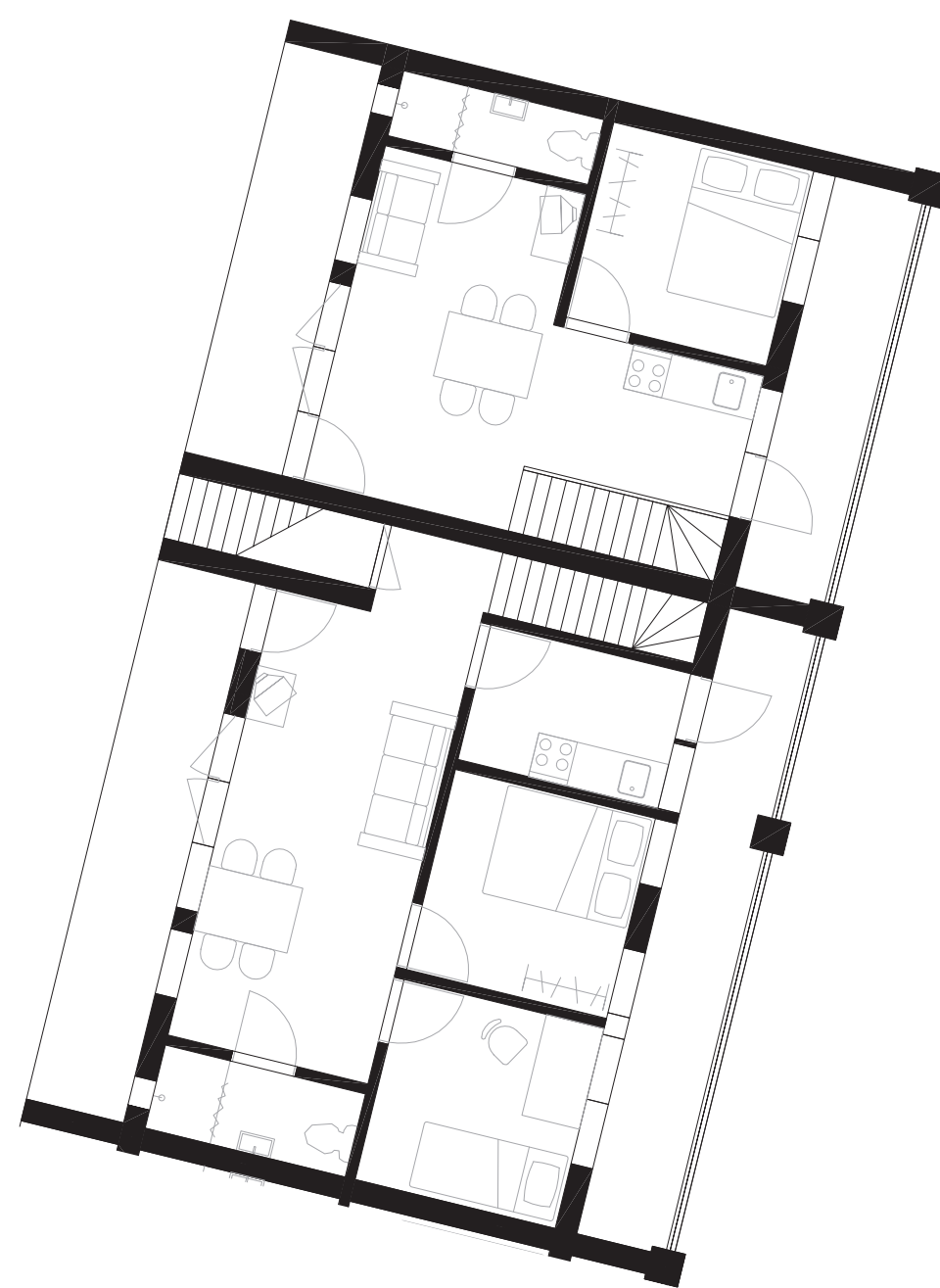
Most common unit:
36 m² dwelling



Plan residential street level 1:200



Ground floor family housing:
81 m² & 54 m² dwelling
+ niche in front of the house
and private balcony



Plan stairs residential street level 1:200



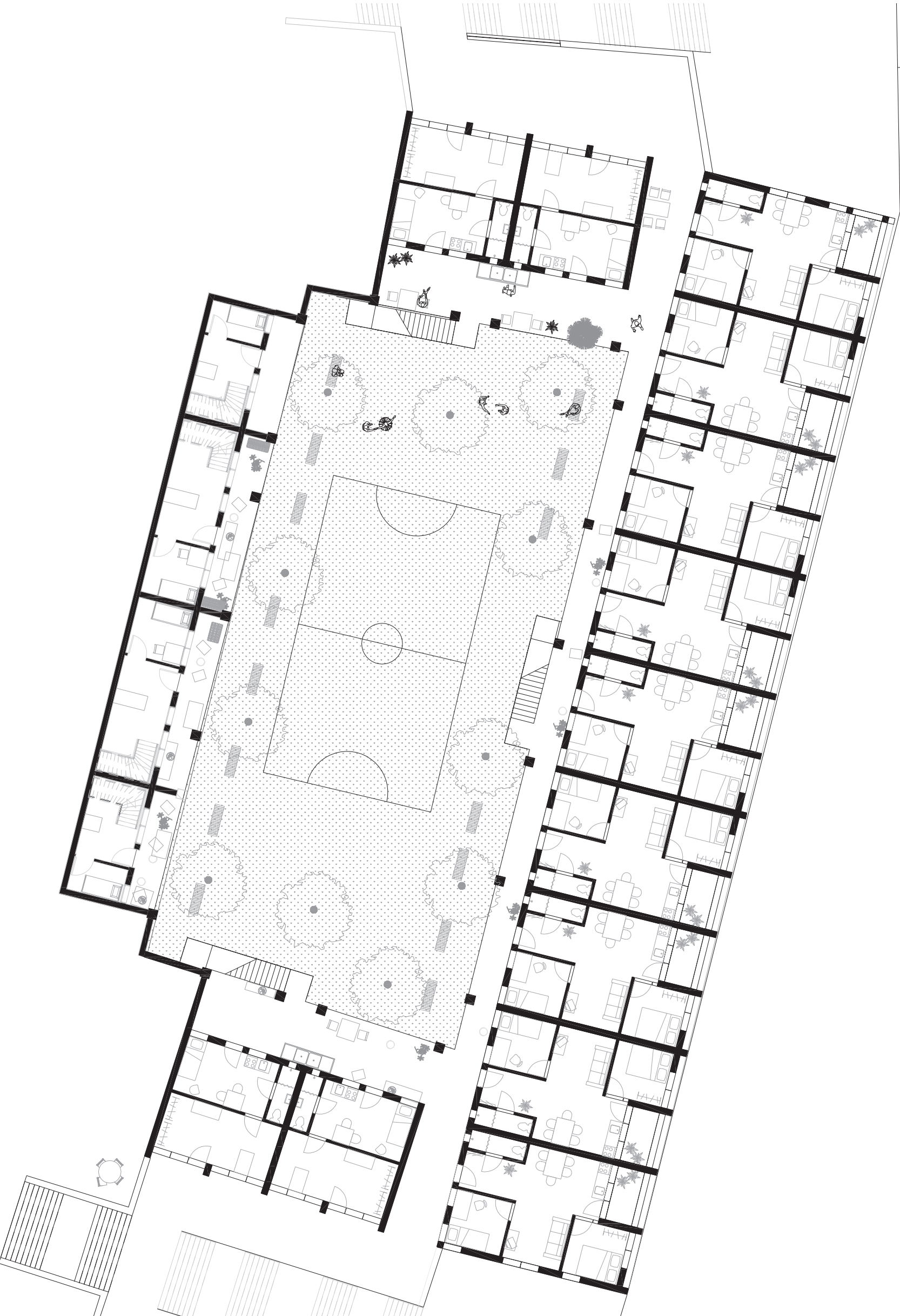
Plan stairs courtyard level 1:200



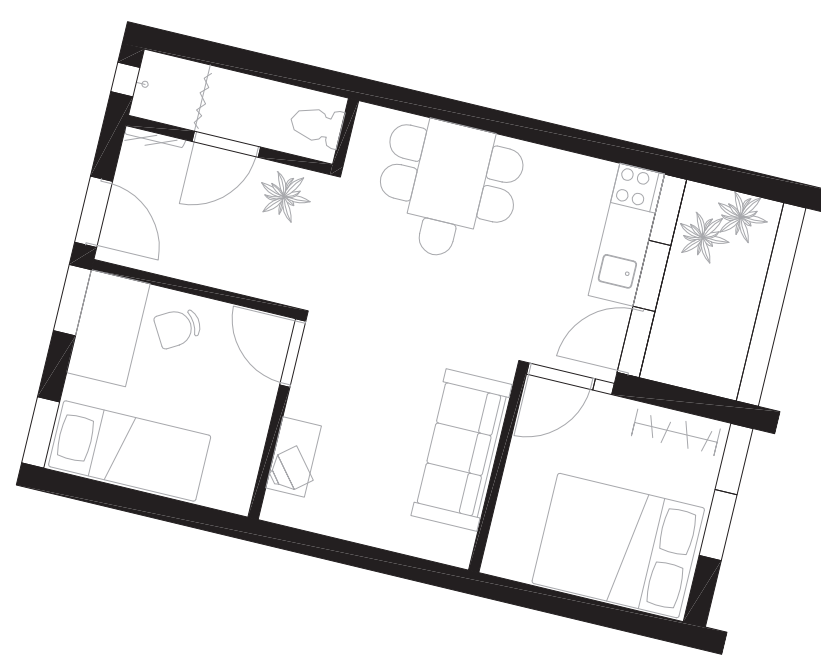
Plan stairs mainstreet +3m 1:200



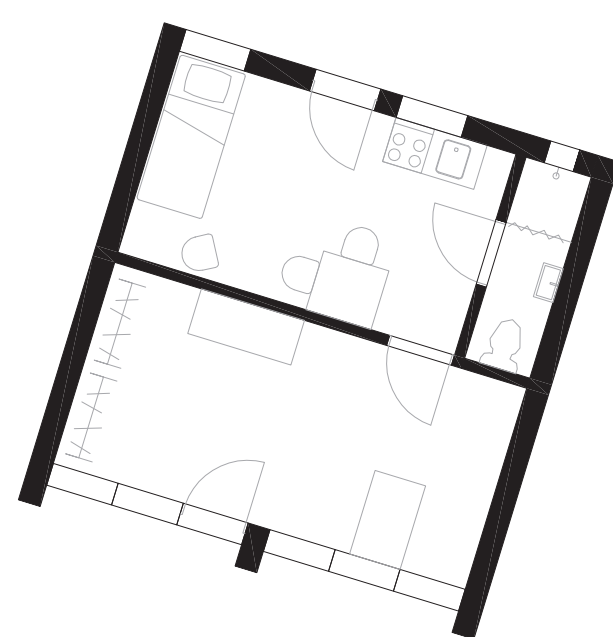
Plan courtyard level 1:200



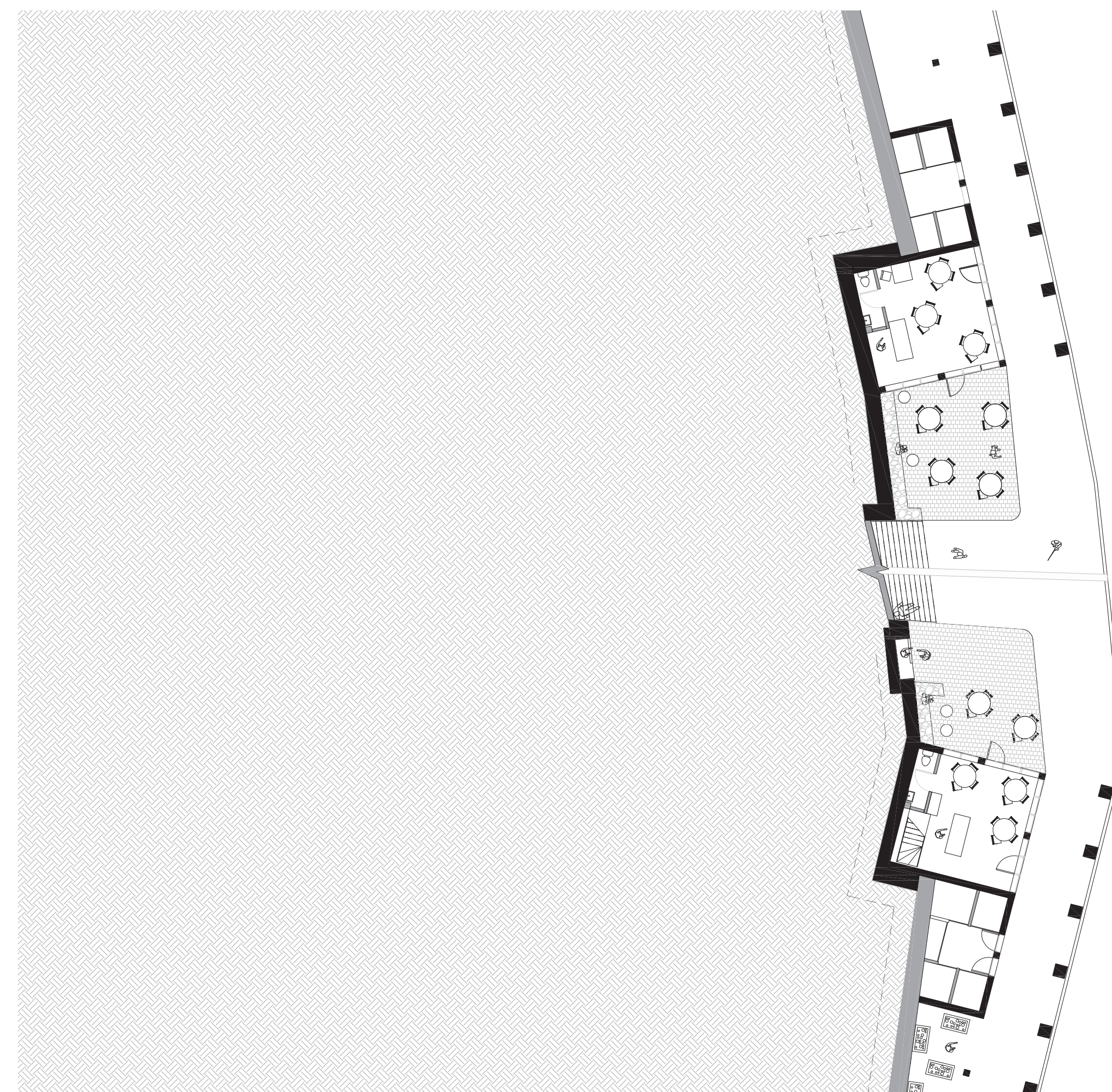
Big unit: 54 m² dwelling



Shop unit: 18 m² dwelling + 18 m² shop



Plan stairs mainstreet 1:200





The public corner



Mainstreet | Start stairs



Interior arcade



Shared gallery



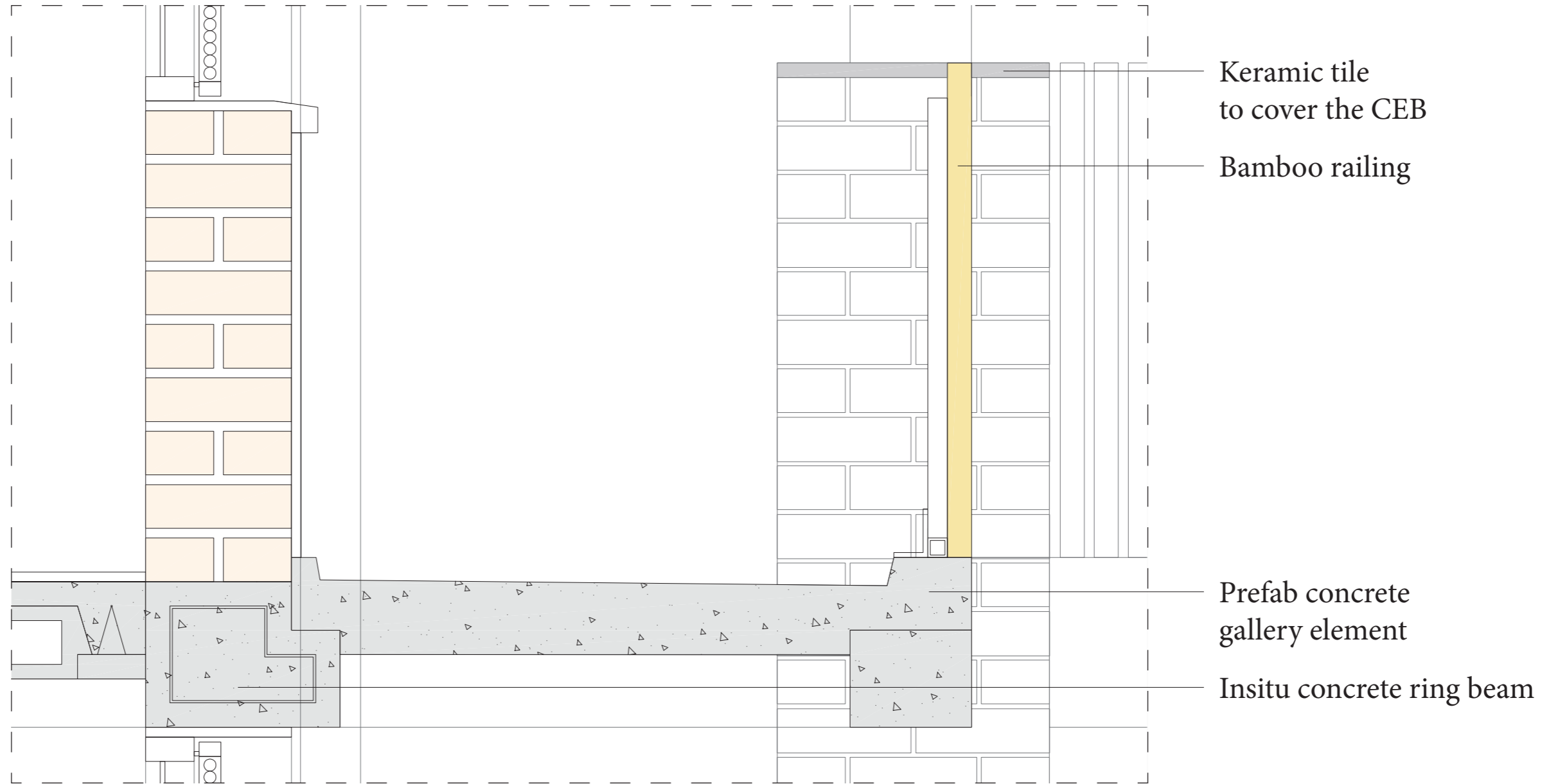
Courtyard



Terraces with shops



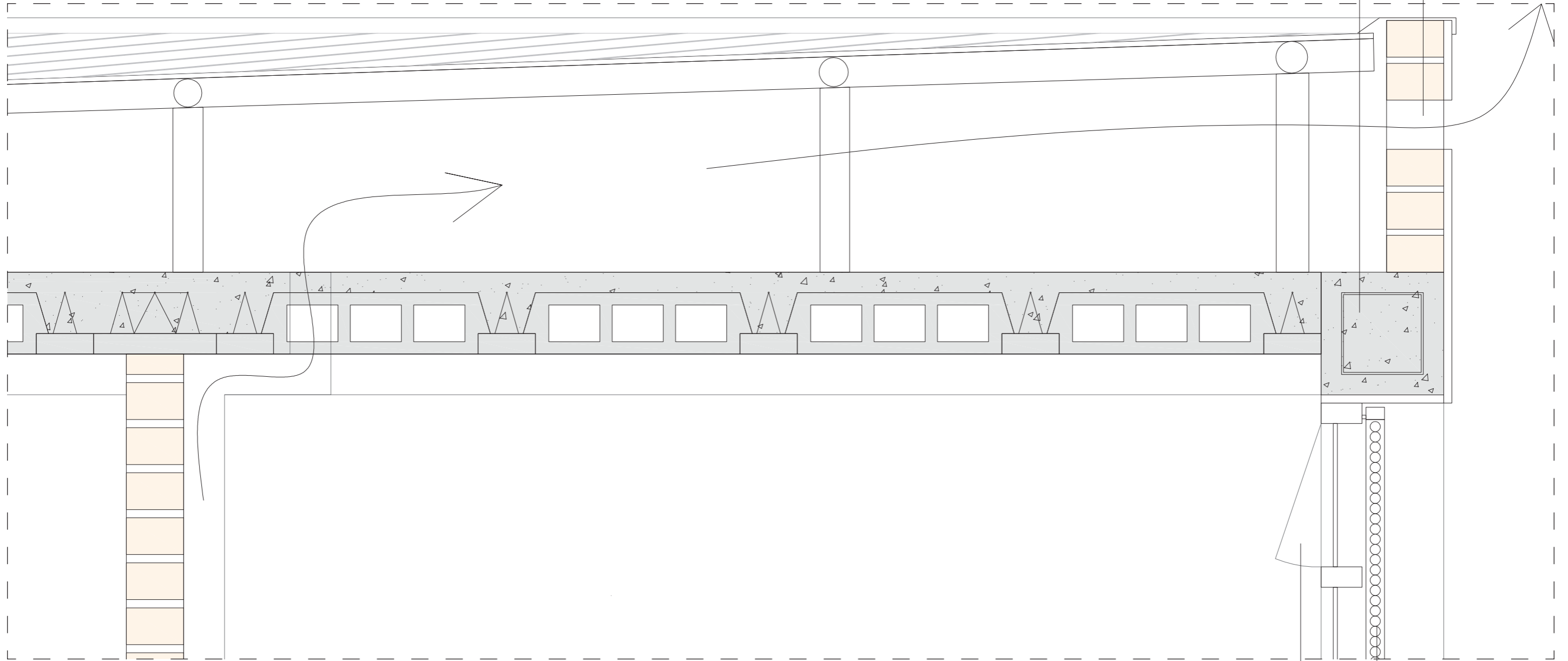
Residential street



Detail 1:10 gallery

CEB's with opening
for natural ventilation

Insitu concrete ring beam



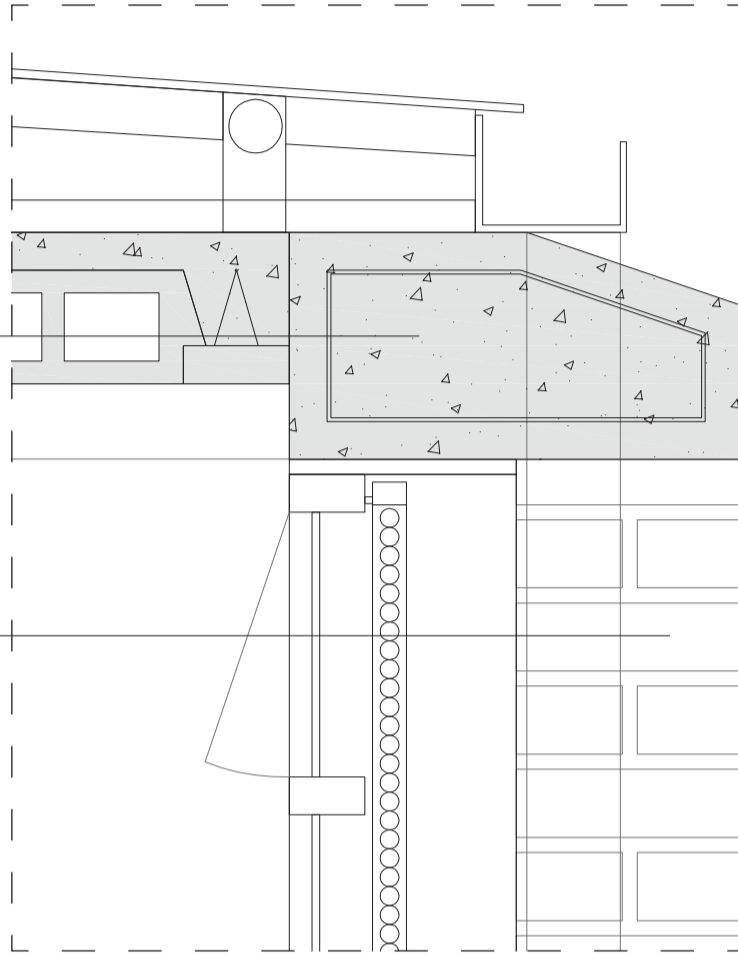
Extra opening element
in the window

Bamboo shutters

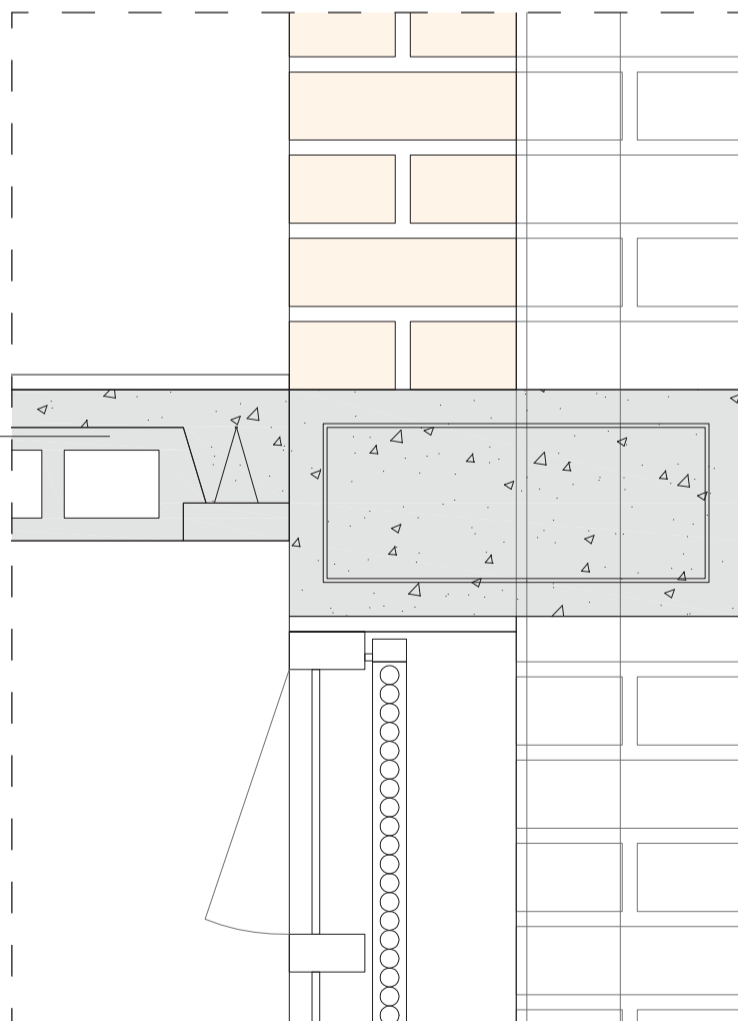
Detail 1:10 double roof

Ring beam
with gutter on top

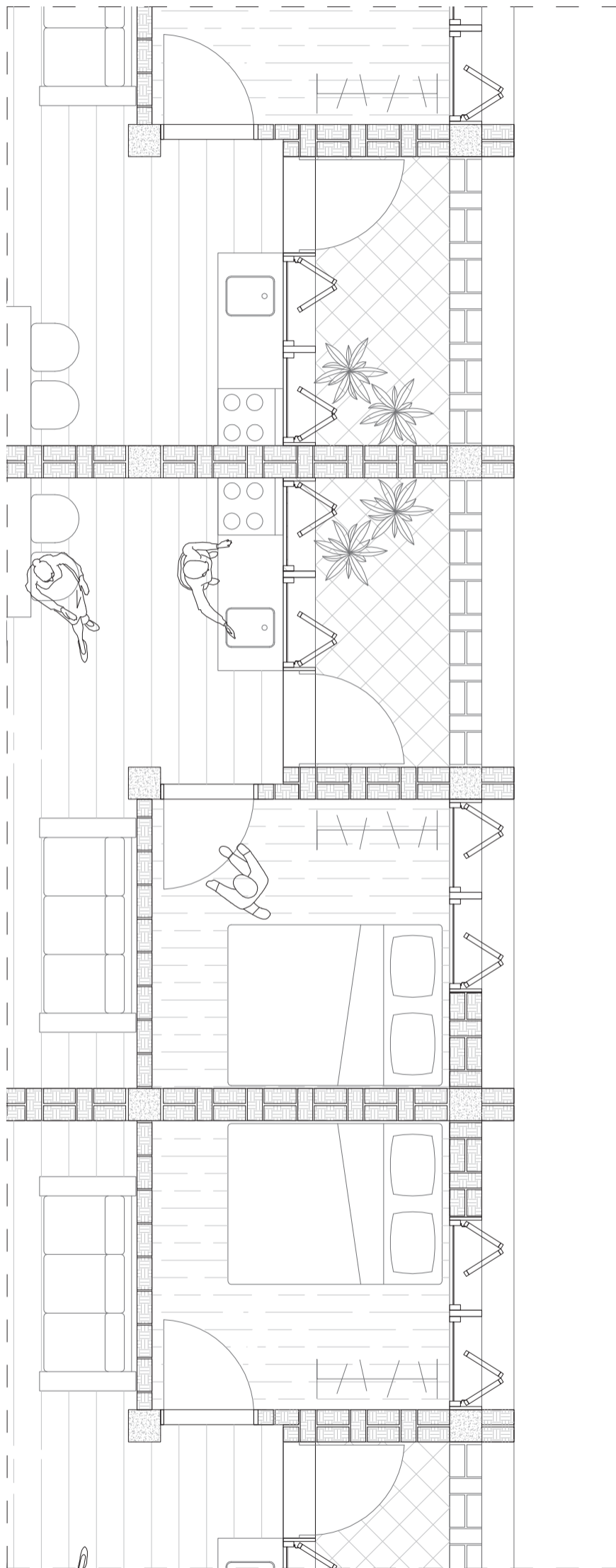
CEB element in
the facade



Concrete hollow
floor blocks
plus concrete top layer



Detail 1:10 CEB element in the facade



Horizontal section 1:50