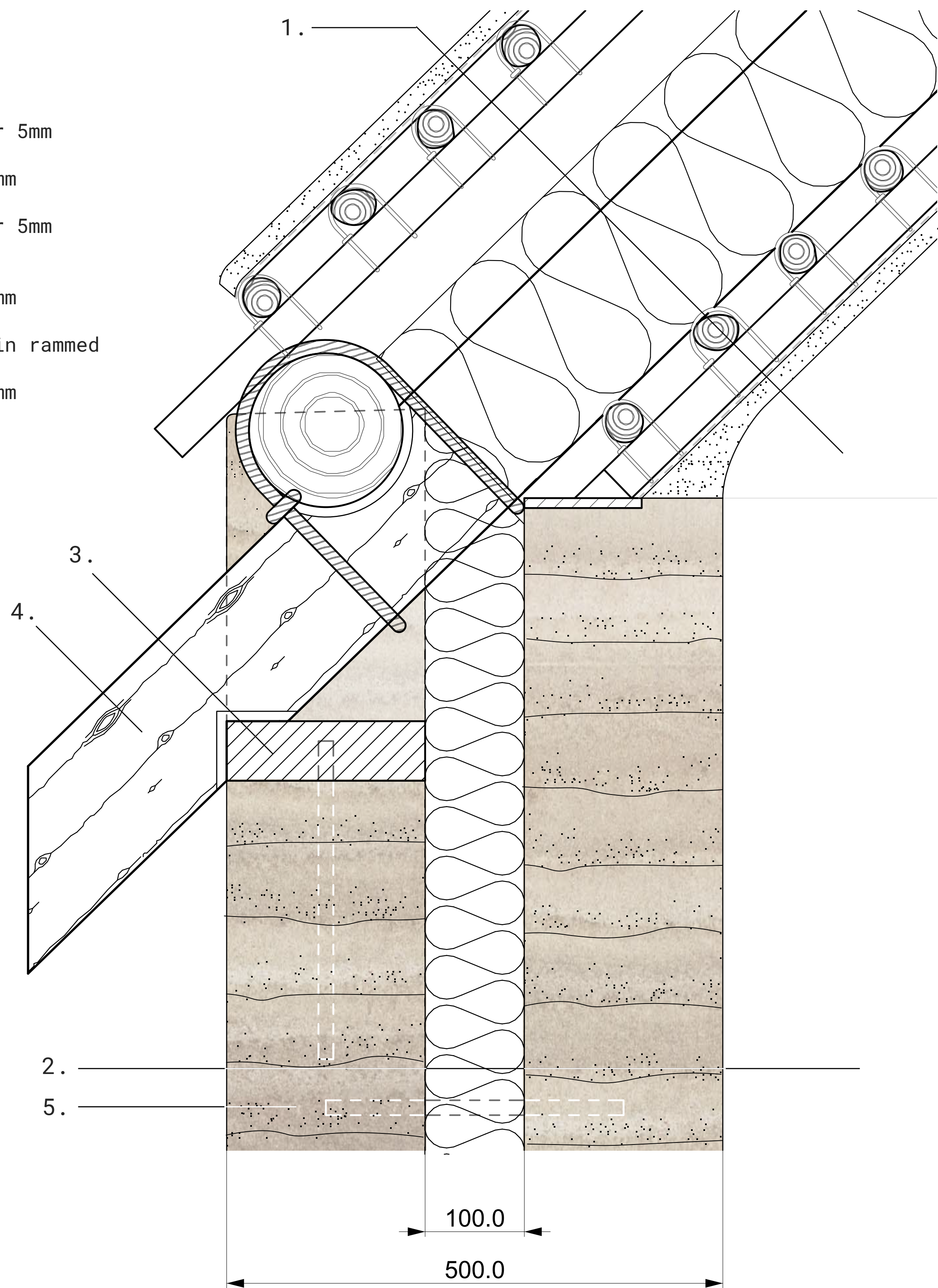
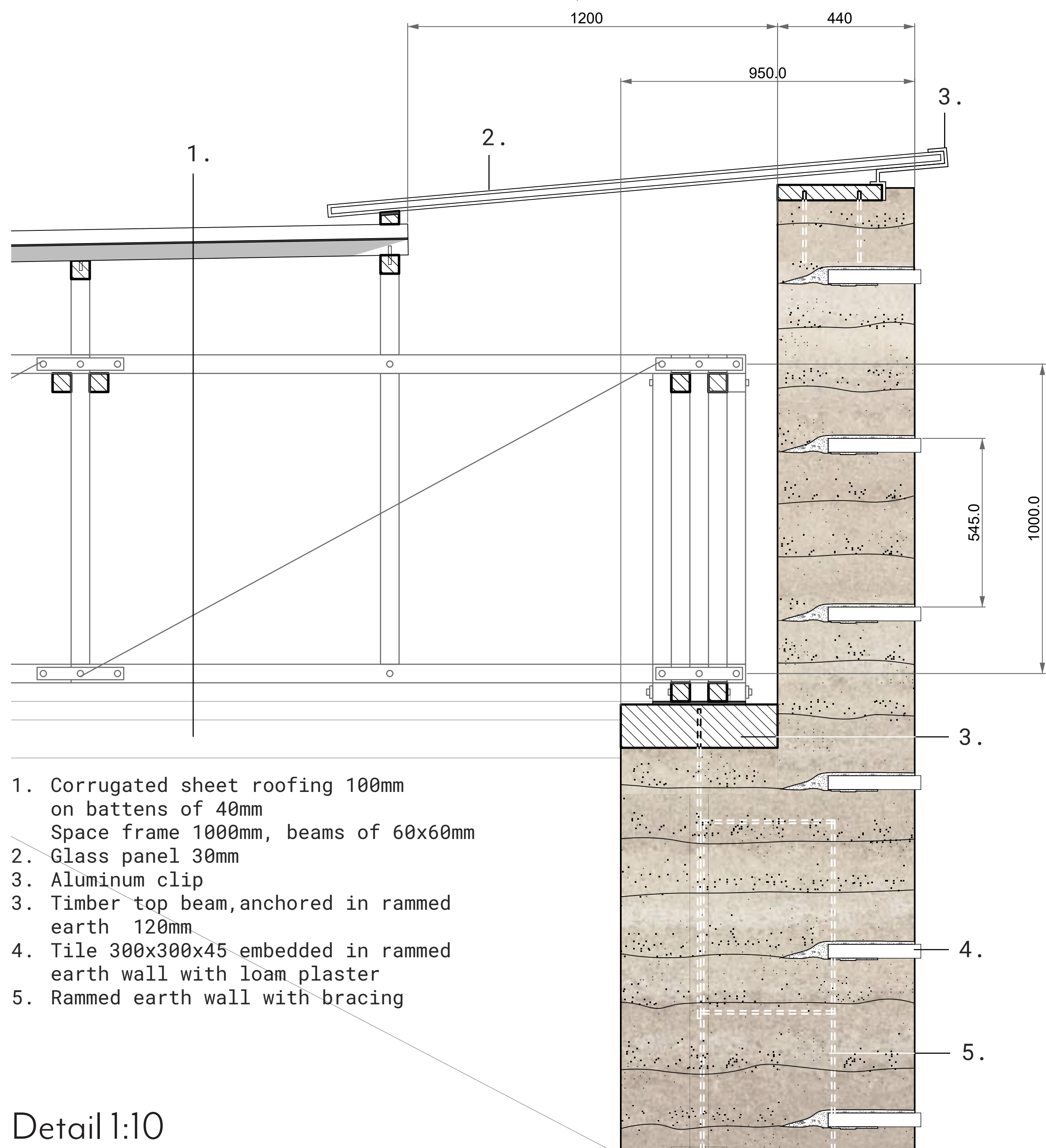


Parkstad, Limburg and situation

1. Loam plaster finish 20mm
Hemp quilt substrate layer 5mm
Battens 2x40mm
Hemp straw insulation 200mm
Battens 2x40mm
Hemp quilt substrate layer 5mm
Loam plaster finish 20mm
2. Rammed earth 200mm
Hemp straw insulation 100mm
Rammed earth 200mm
3. Timber top beam, anchored in rammed earth 60mm
4. Roundwood timber beam 150mm
5. Bracing rammed earth

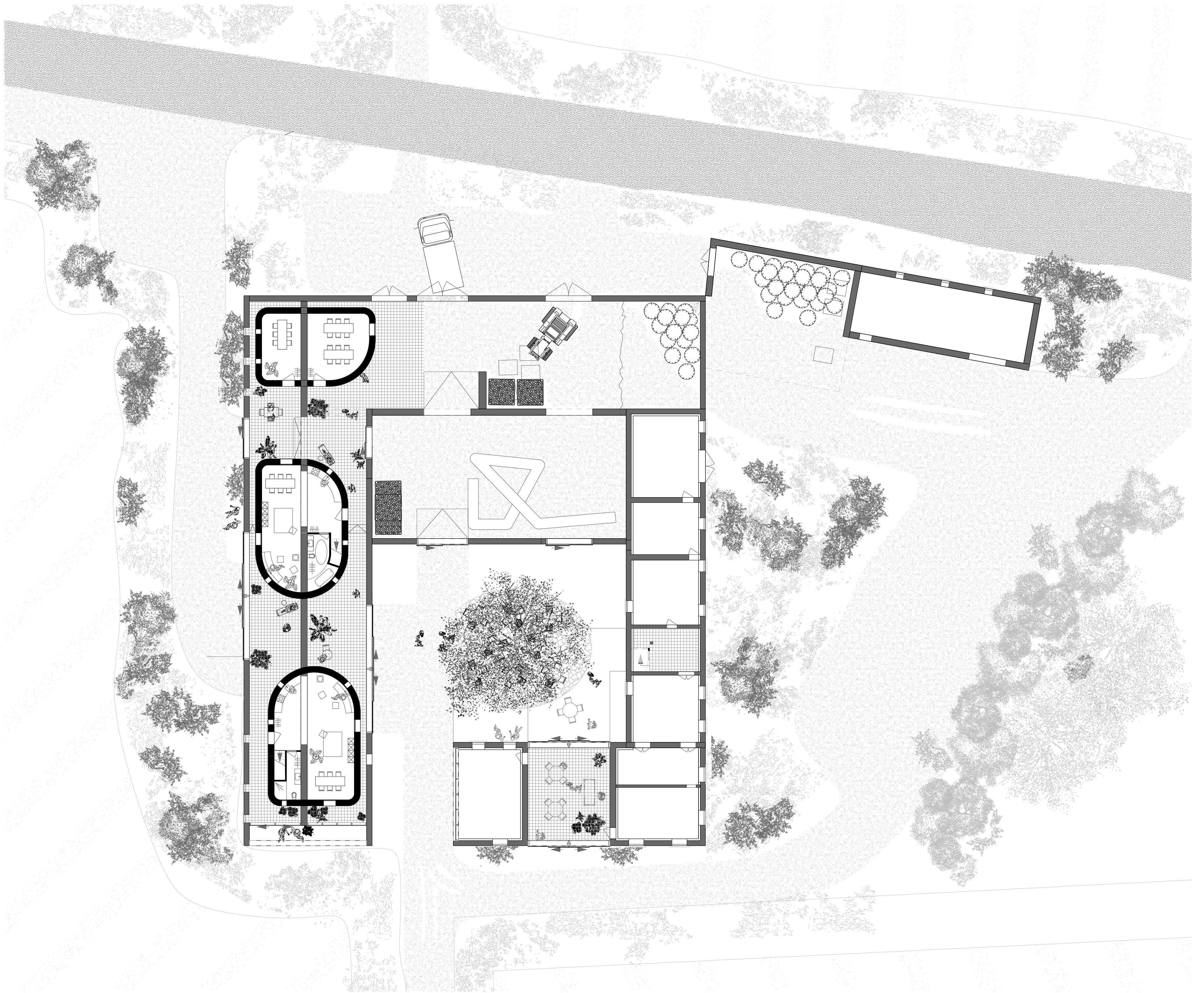


Detail 1:5

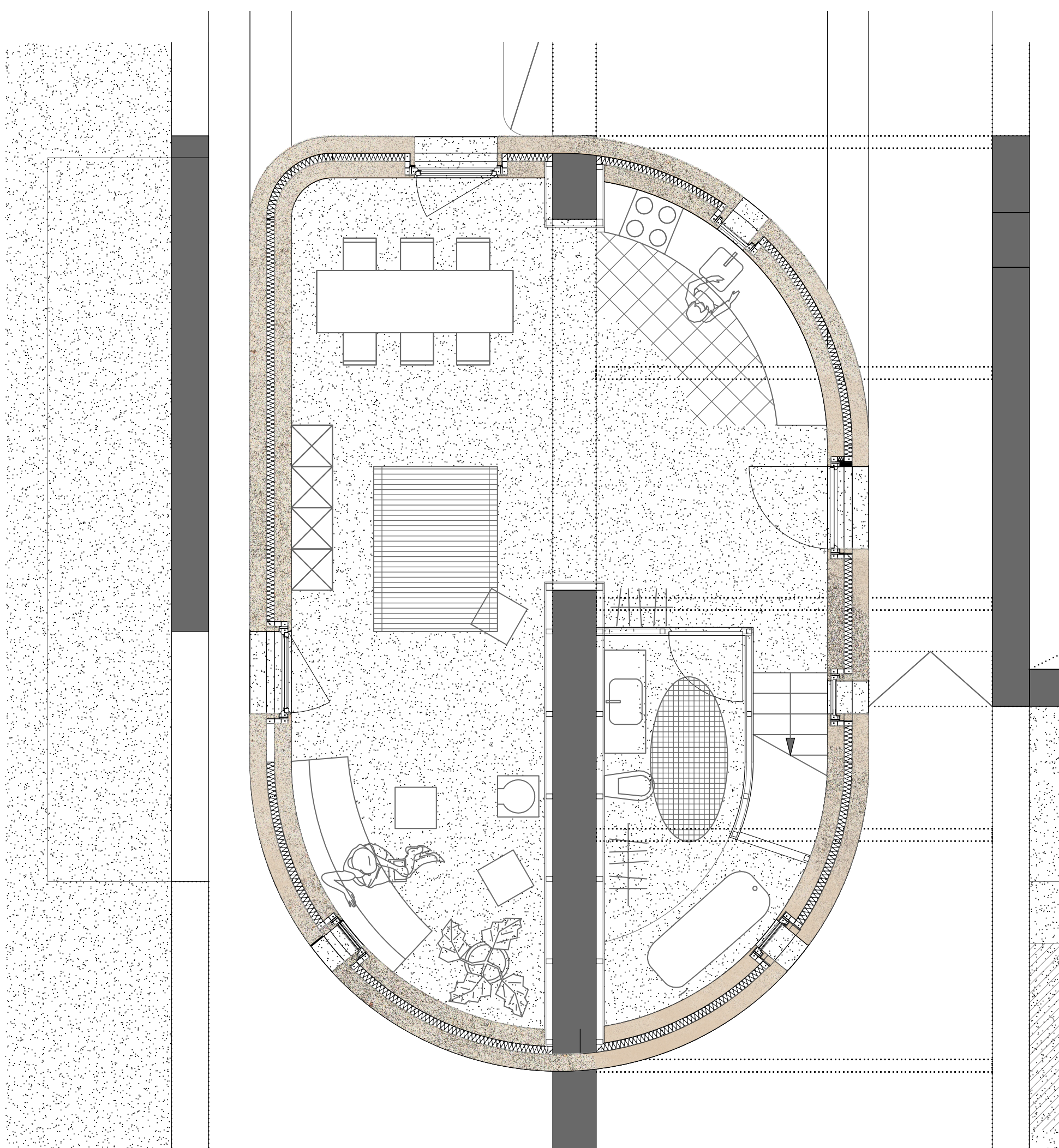


1. Corrugated sheet roofing 100mm
on battens of 40mm
Space frame 1000mm, beams of 60x60mm
2. Glass panel 30mm
3. Aluminum clip
3. Timber top beam, anchored in rammed earth 120mm
4. Tile 300x300x45 embedded in rammed earth wall with loam plaster
5. Rammed earth wall with bracing

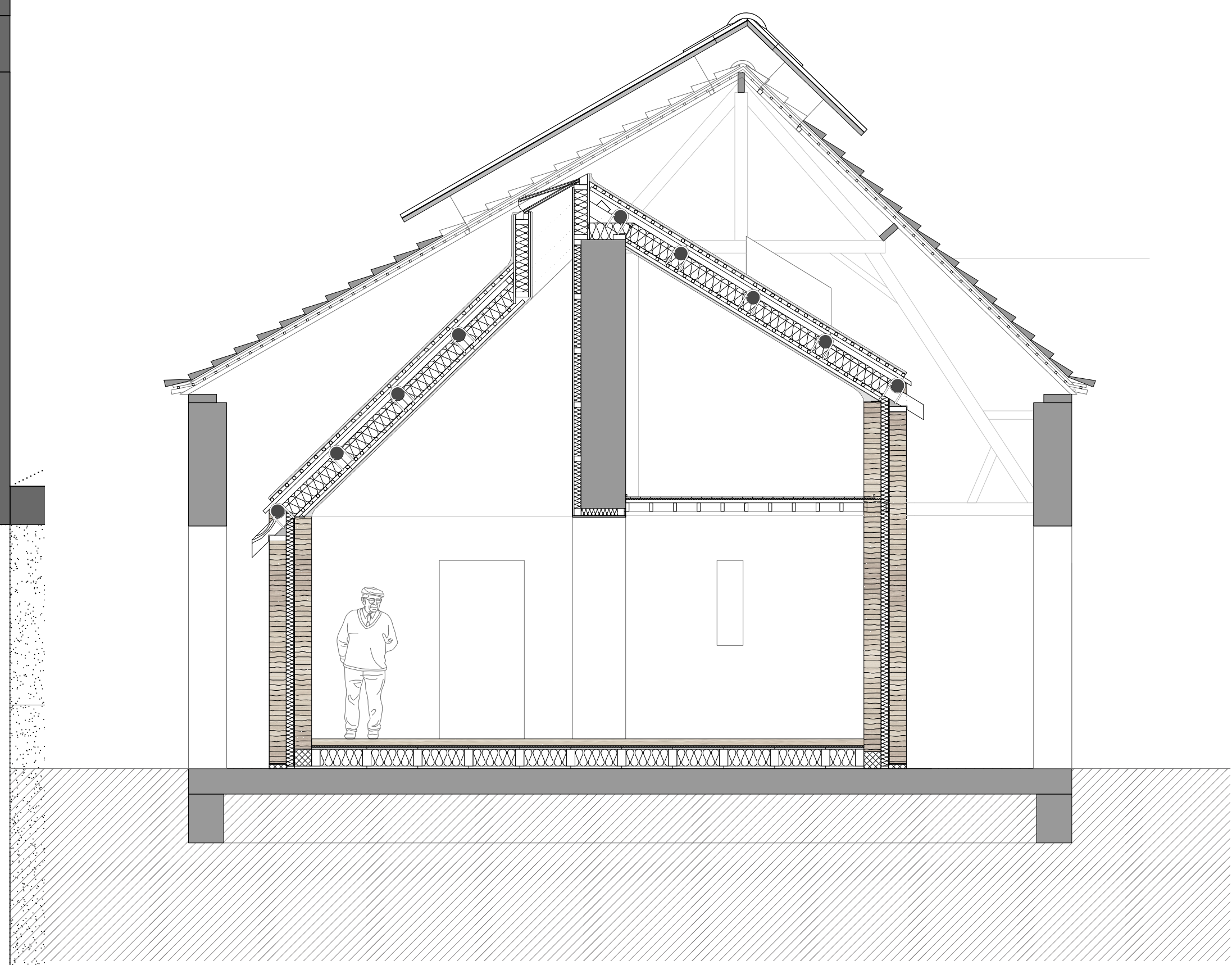
Detail 1:10



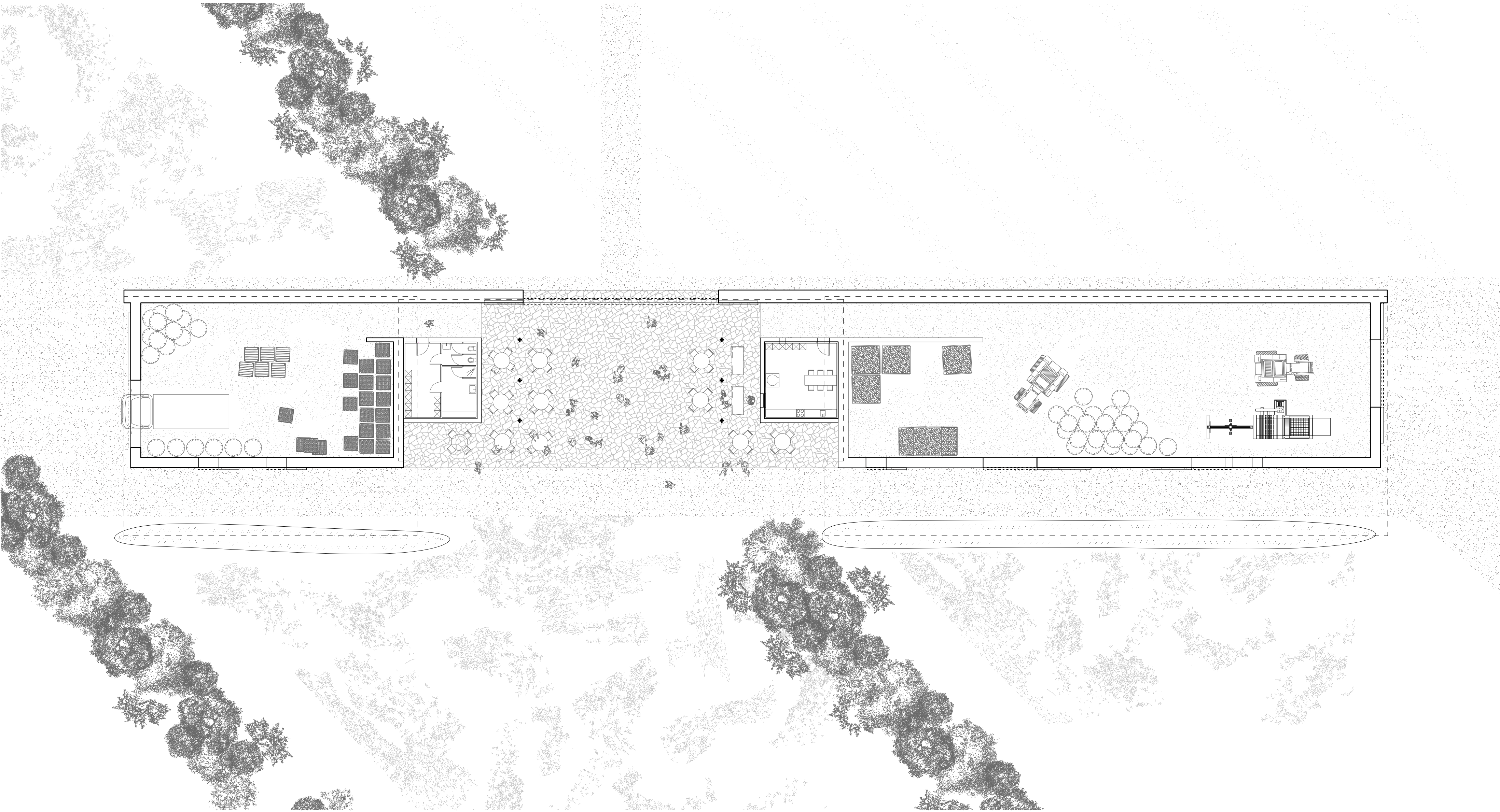
Floorplan 1:200



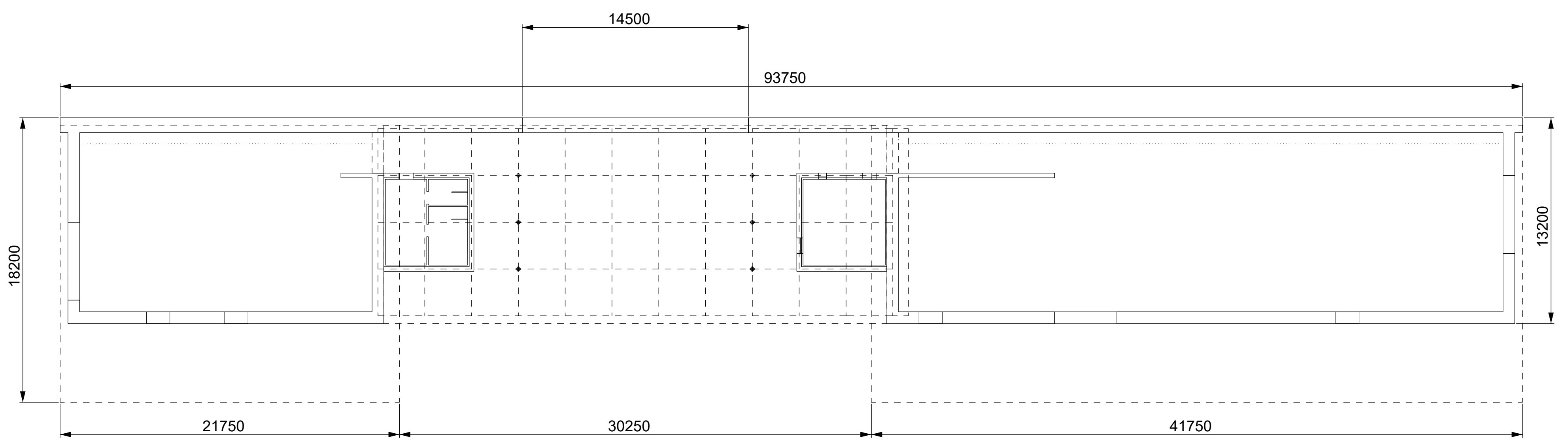
Floorplan 1:50



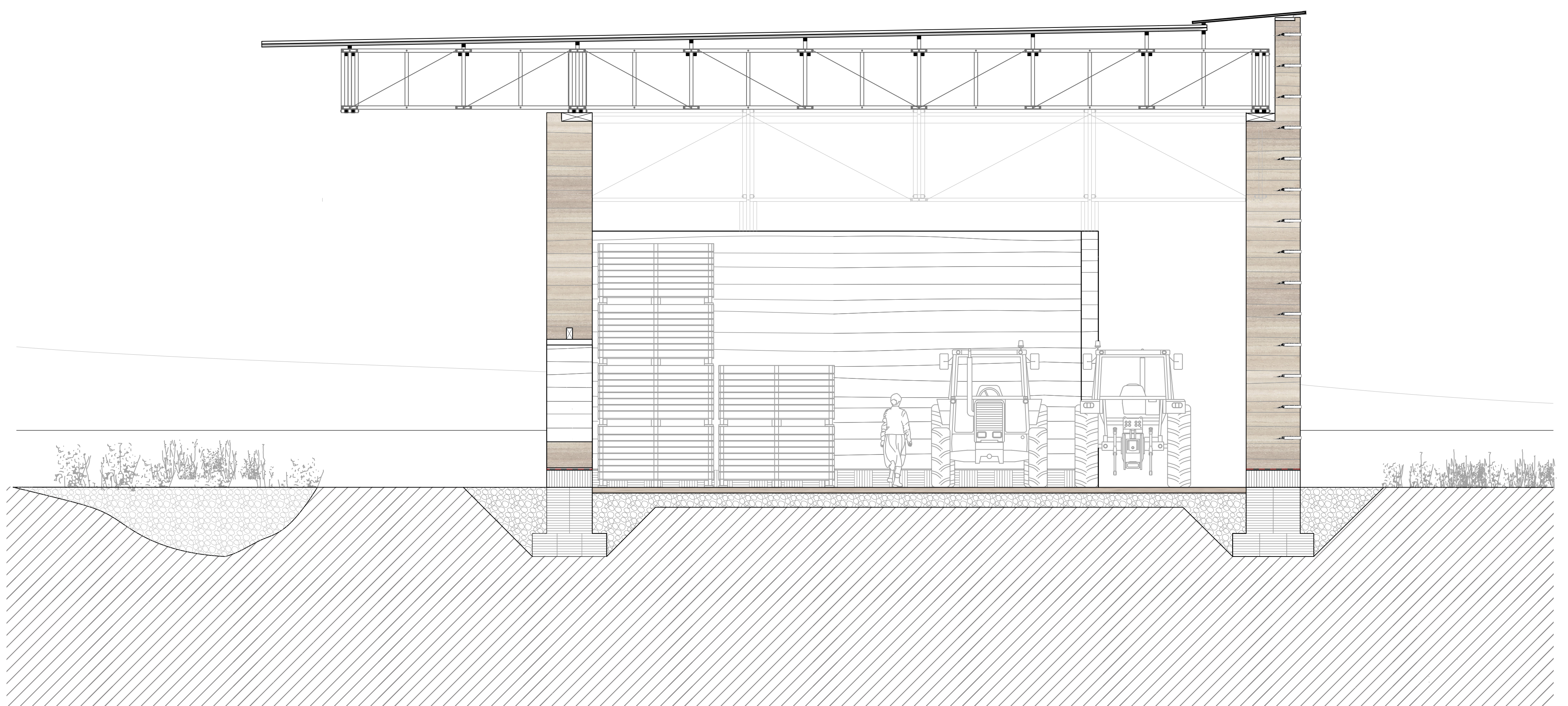
Section 1:50



Floorplan 1:200



Dimensions 1:200



Section 1:50