

Fenixloods II

Rotterdam Harbour Heritage

Graduation Presentation

Jiska Bonte

4108094

17-4-2018

Introduction

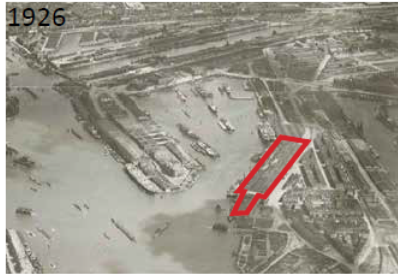


Index

- Analyses
- Master plan
- Functions
- Technical aspects

Analyse: Architectural Analysis

1916-1922



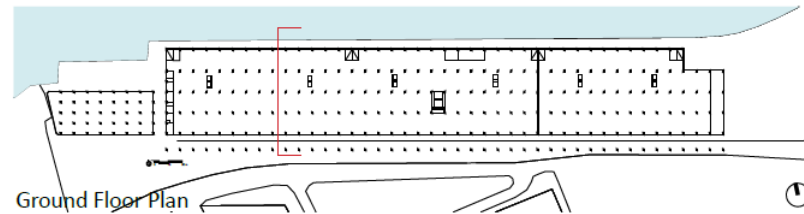
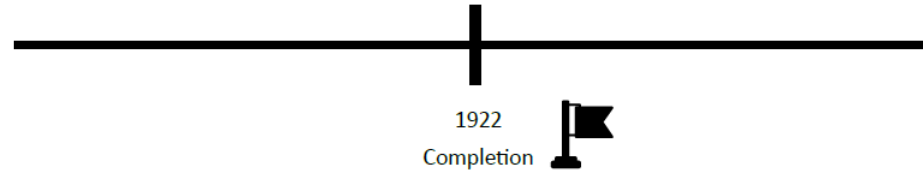
coll. Spaarnestad Archief, foto KLM 3328

1931

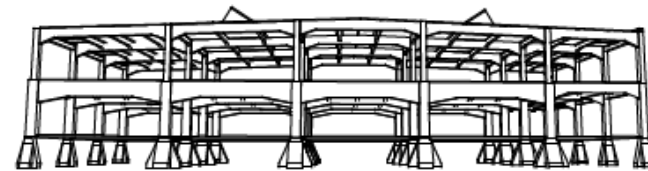


Bouwkundig Weekblad, p. 110 jg. 1931

Phase I 1916-1922 San Francisco Warehouse



Ground Floor Plan



North side (waterfront)

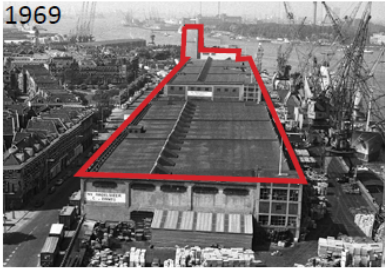
South side (Deliplein)

Analyse: Architectural Analysis

1944-1951

Phase II 1944-1951 Fenix I and Fenix 2

1969

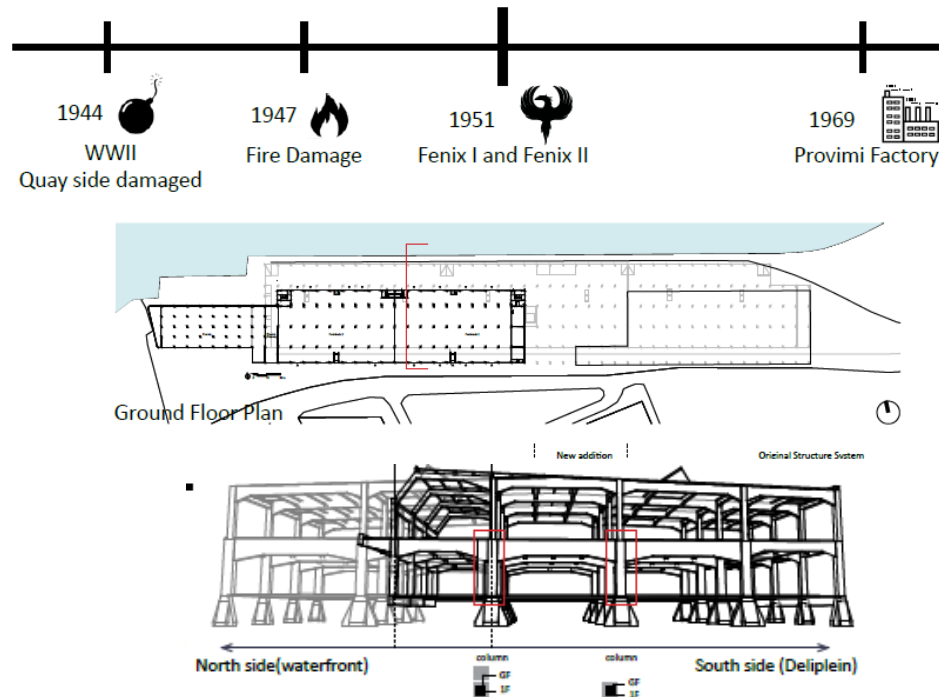


Fenixloft (<https://www.heijmans.nl/projecten/fenixloodsen/>)

1974

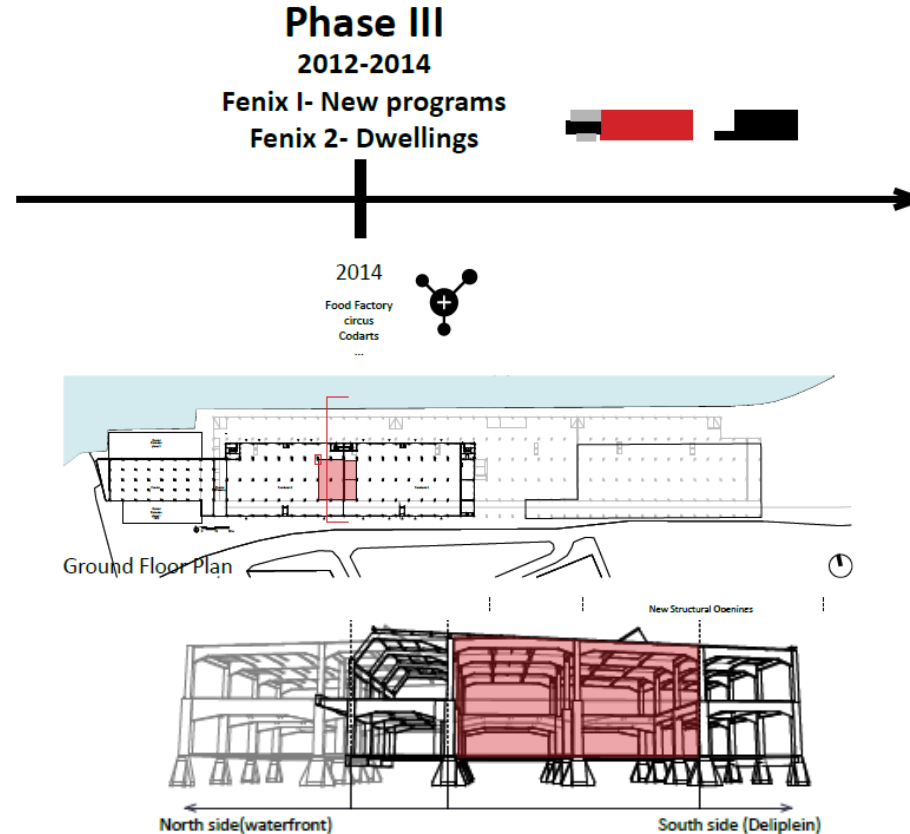


Roeterdam City Archive

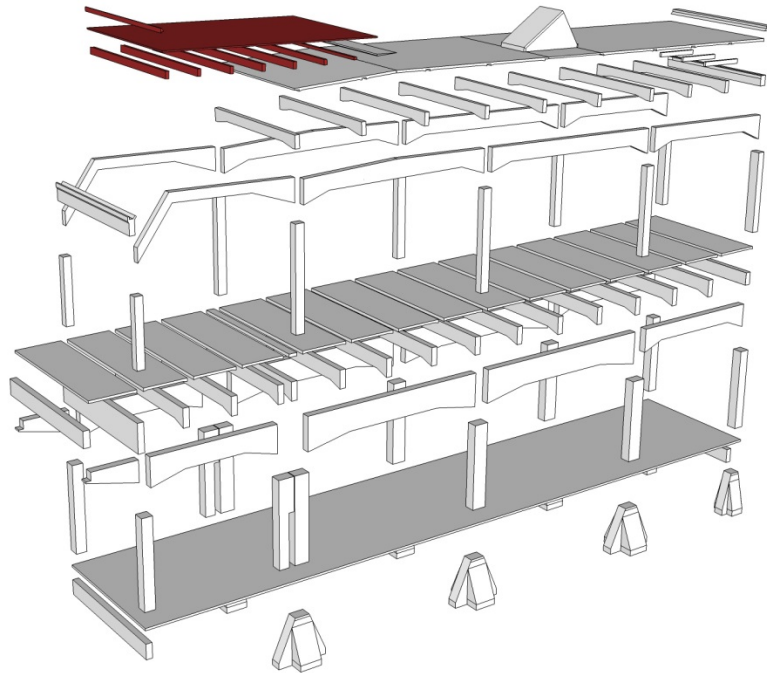


Analyse: Architectural Analyses

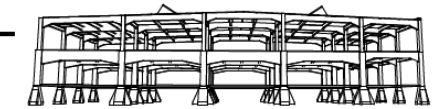
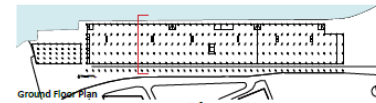
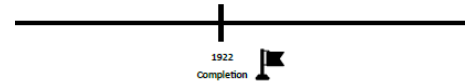
2012-2014



Analyse: Technical Analyses

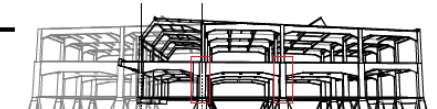
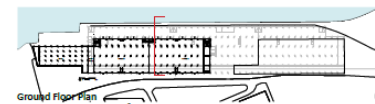
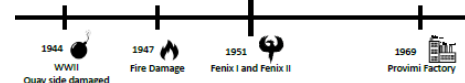


Phase I
1916-1922
San Francisco Warehouse



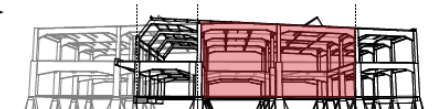
North side(waterfront) South side (Delieplein)

Phase II
1944-1951
Fenix I and Fenix 2



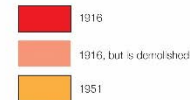
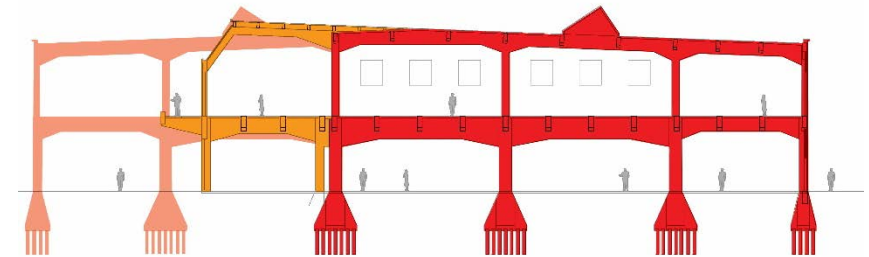
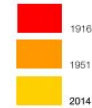
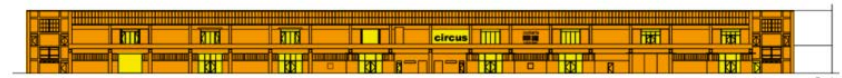
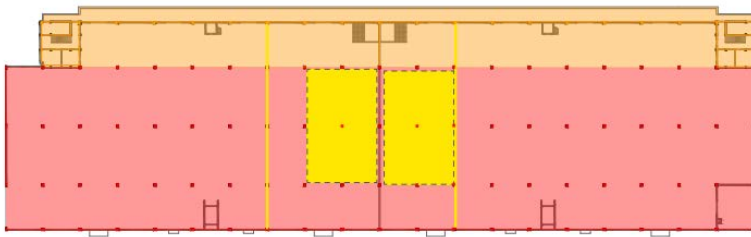
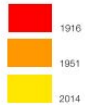
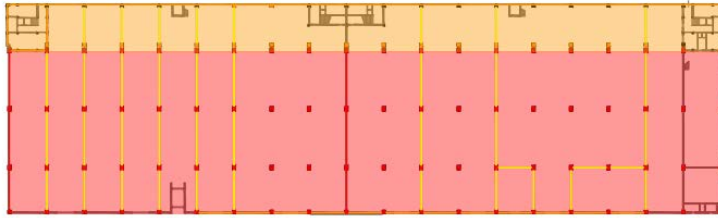
North side(waterfront) South side (Delieplein)

Phase III
2012-2014
Fenix I- New programs
Fenix 2- Dwellings

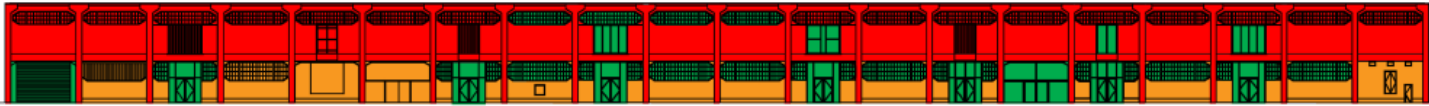


North side(waterfront) South side (Delieplein)

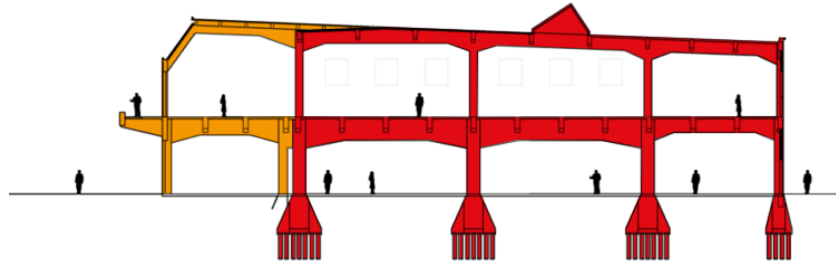
Analyse: Cultural Value



Cultural value; Assessment



Provimi



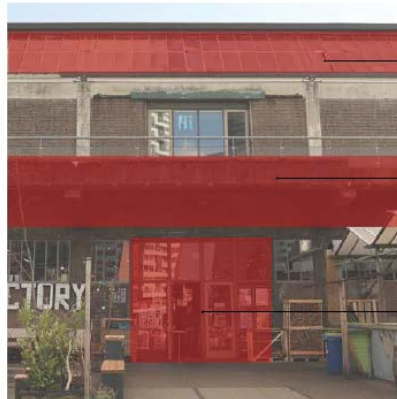
Analyse: Architectural Analysis



Shape of the column
Color of the column



Shape of the window



Side window all along the building

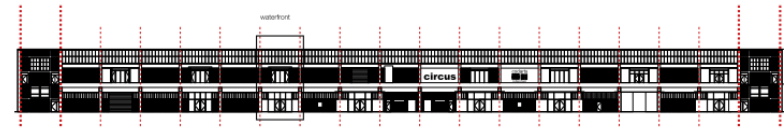


Extended balcony and its structure

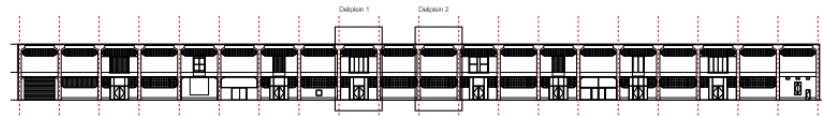


Huge opening as entrance

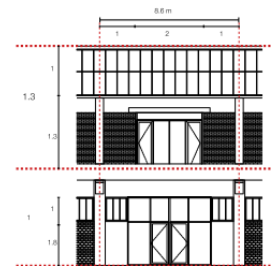
North facade (waterfront)



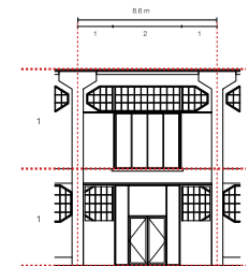
South facade (Deliplein)



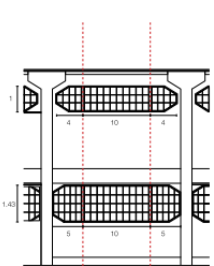
Waterfront



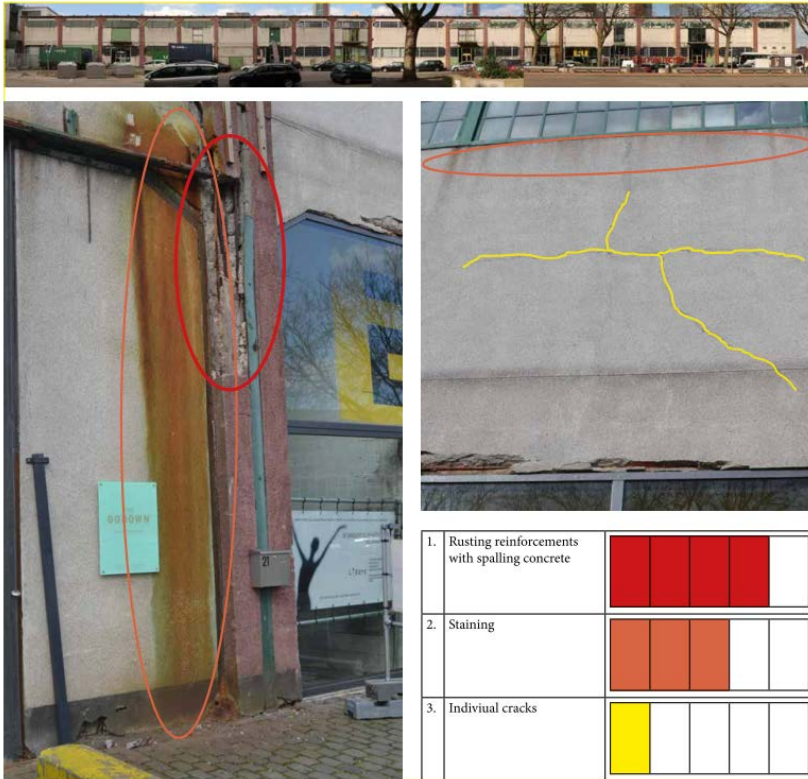
Deliplein 1



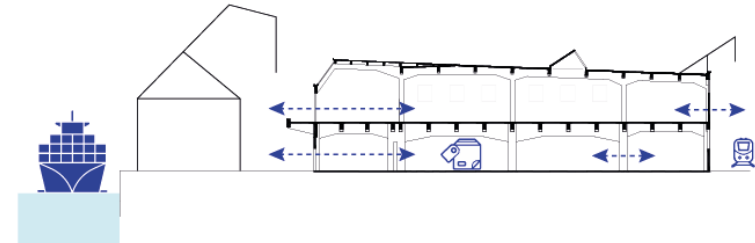
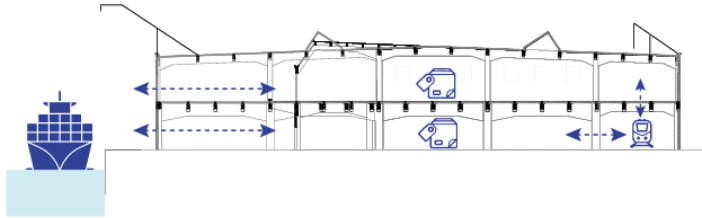
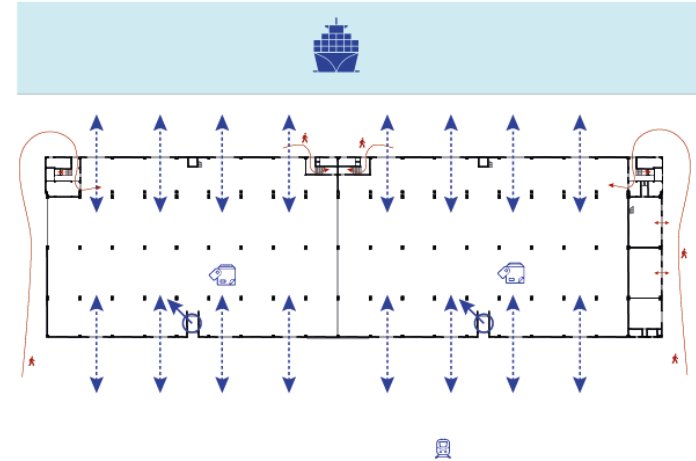
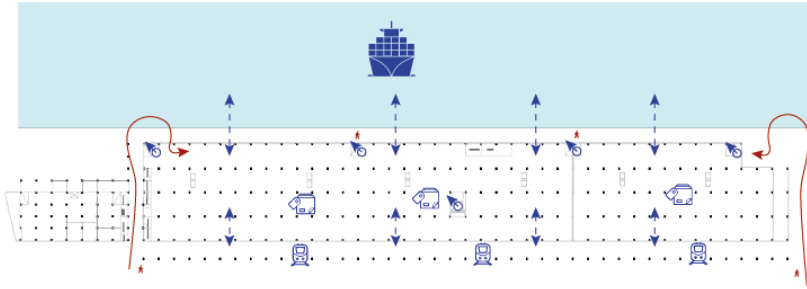
Deliplein 2



Analyse: Technical Analysis



Analyse: Architectural Analysis

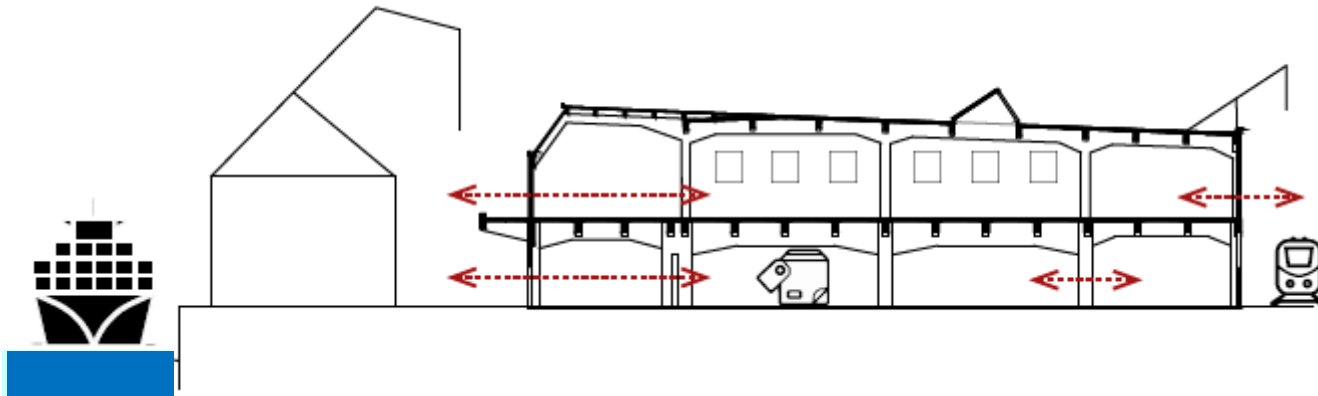


Cultural value; Statement

- The original design by the important architect C.N. van Goor
- Part of the San Francisco loods, the largest warehouse in the world
- Connection to the Holland Amerika Lijn
- Connection with the river
- Survived the bombing of Rotterdam in 1944
- Rose from its ashes and became the Fenix

Starting points

Connection with the water

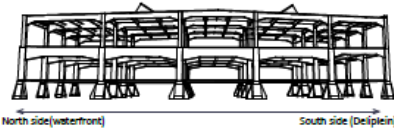
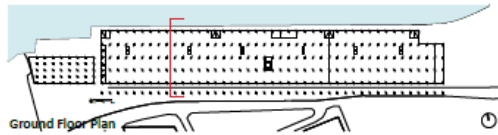


Starting points

Showing the history

Phase I 1916-1922 San Francisco Warehouse

1922
Completion



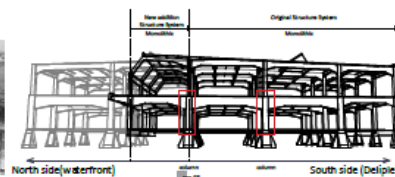
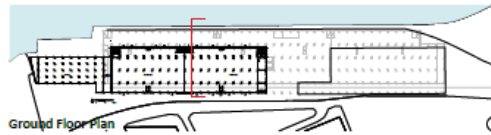
Phase II 1944-1951 Fenix I and Fenix 2

1944
WWII
Quay side damaged

1947
Fire Damage

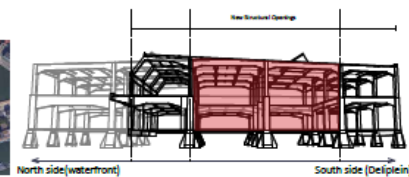
1951
Fenix I and Fenix II

1969
Provimi Factory



Phase III 2012-2014 Fenix I- New programs Fenix 2- Dwellings

2014
Food Factory
Urban
Guidance



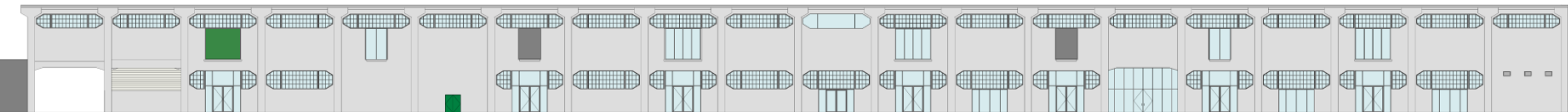
Starting point

Restoring the south facade



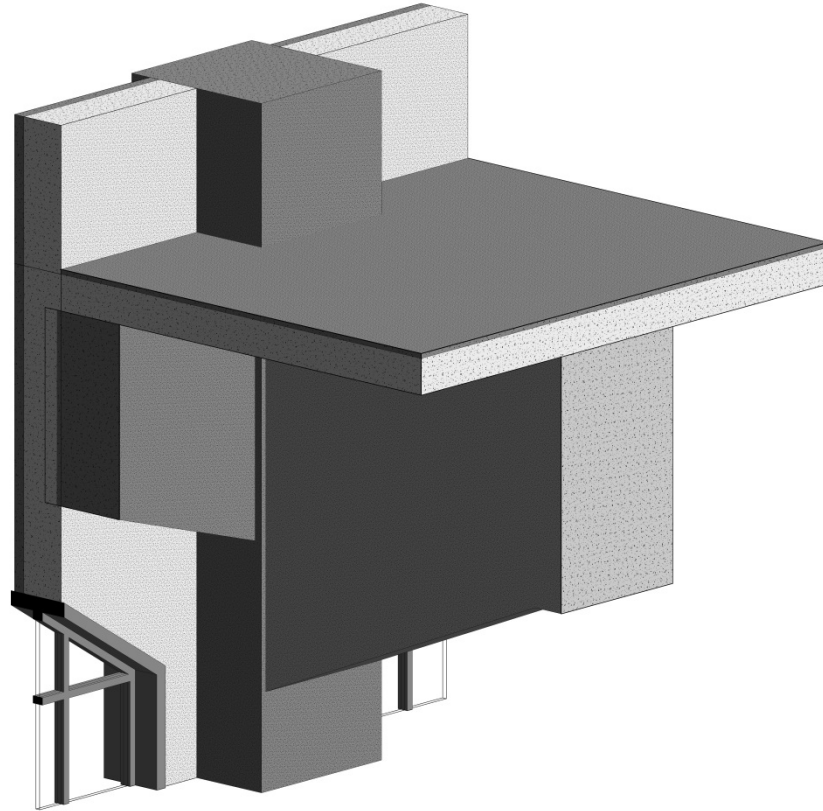
Essence of the building

Last original facade



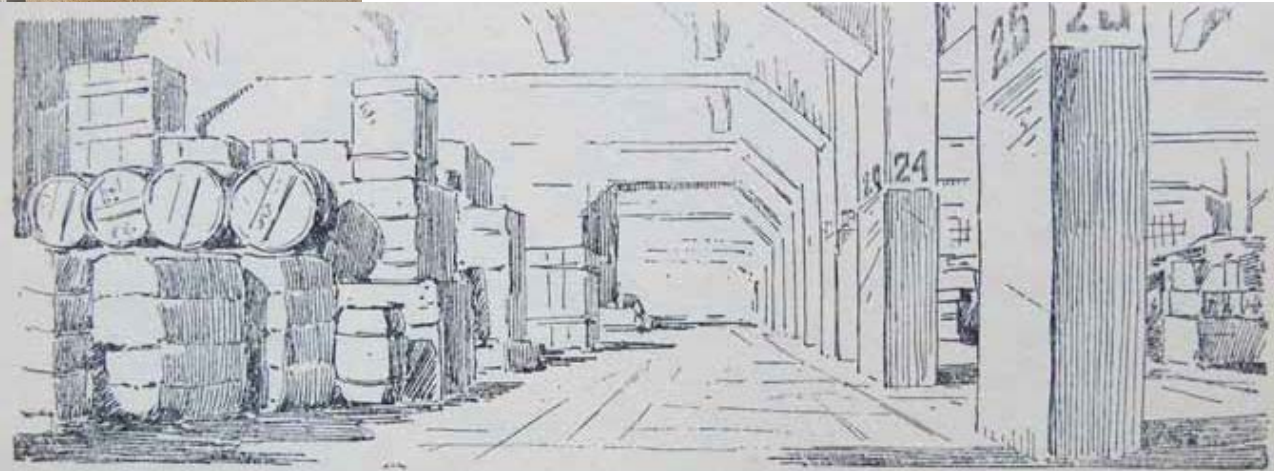
Essence of the building

Detail as ornament



Essence of the building

Repetition and roughness



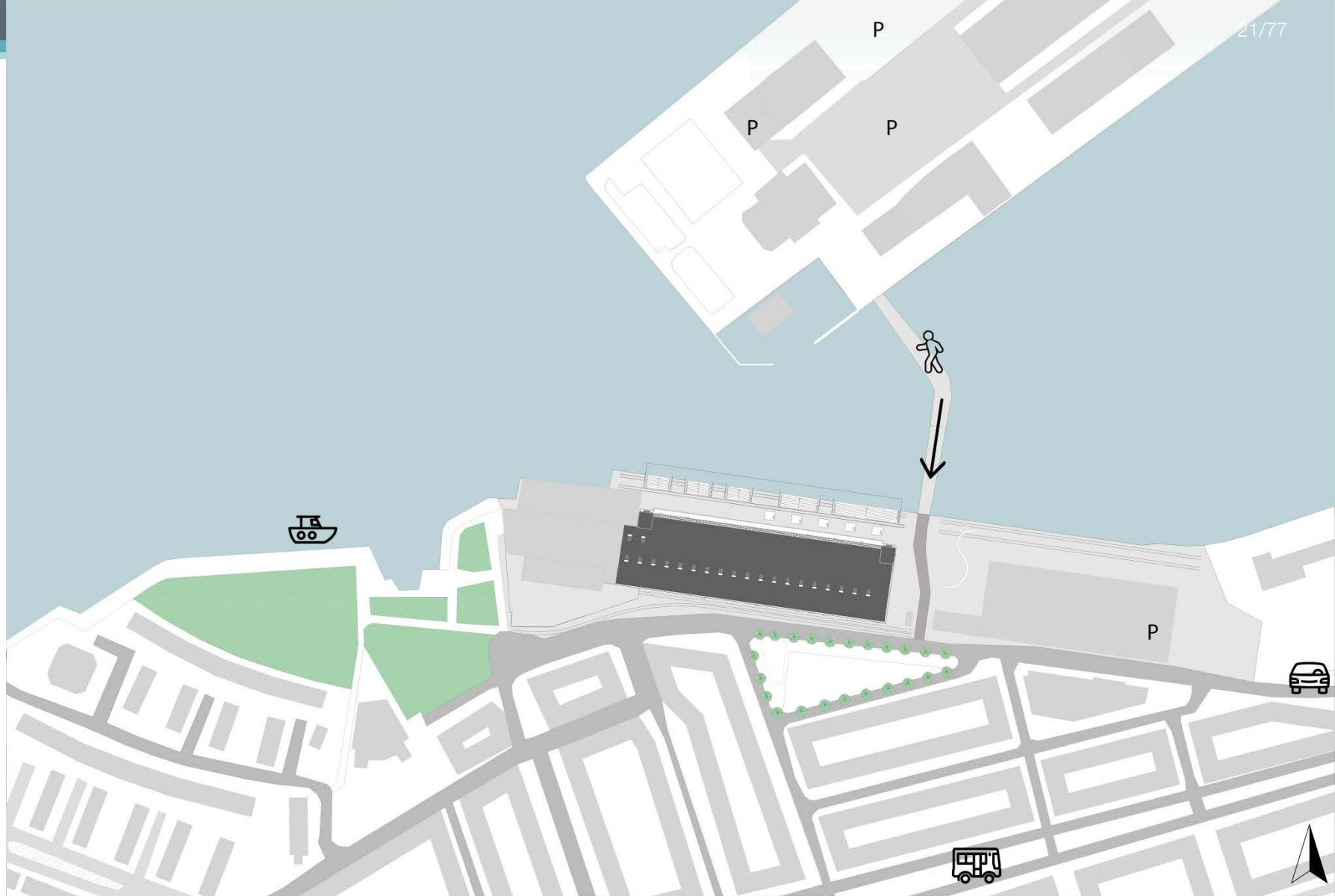
GOEDERENLOODS „SAN FRANCISCO“

Essence of the building

Location



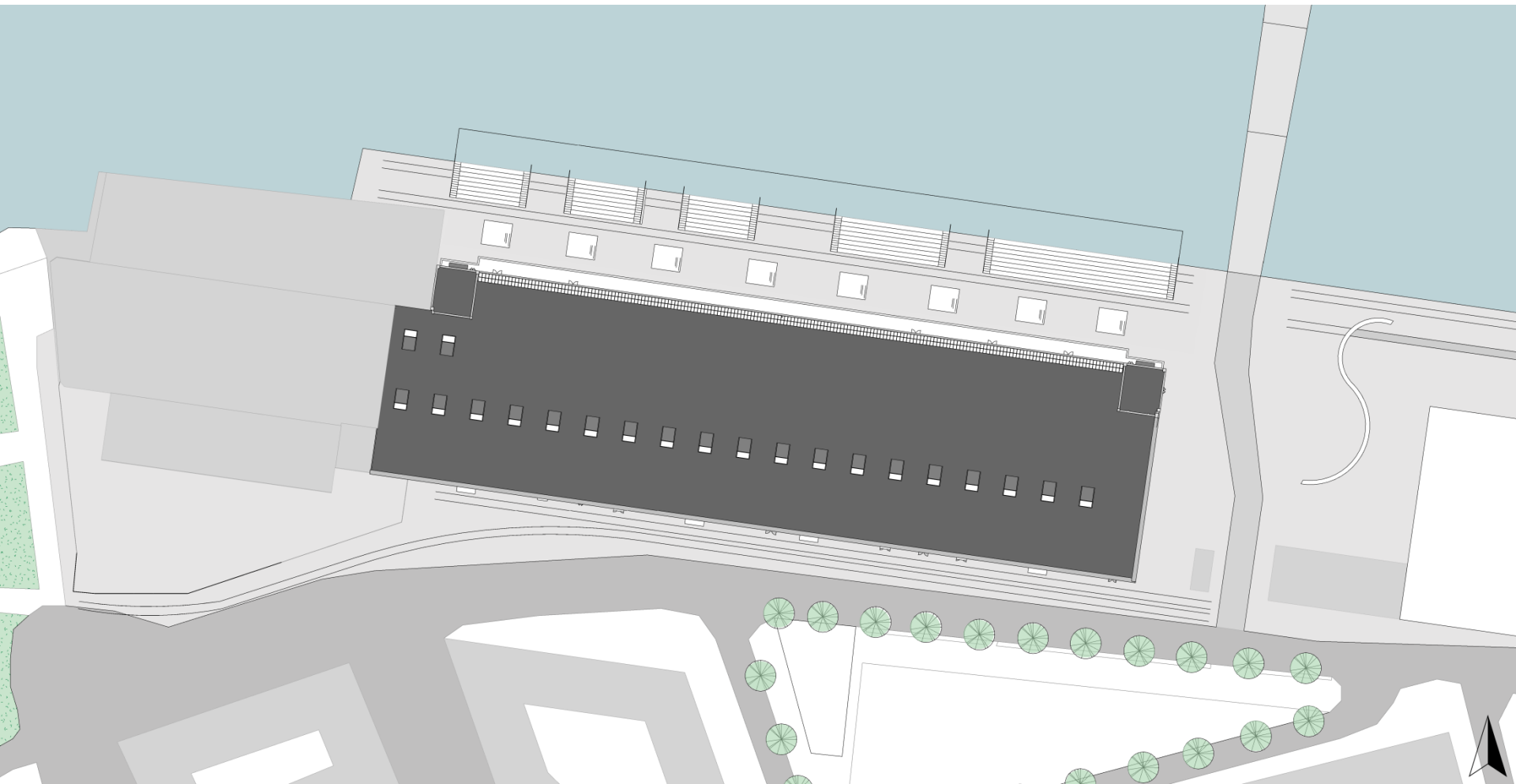
Masterplan



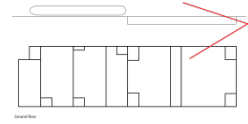
Quay - Present



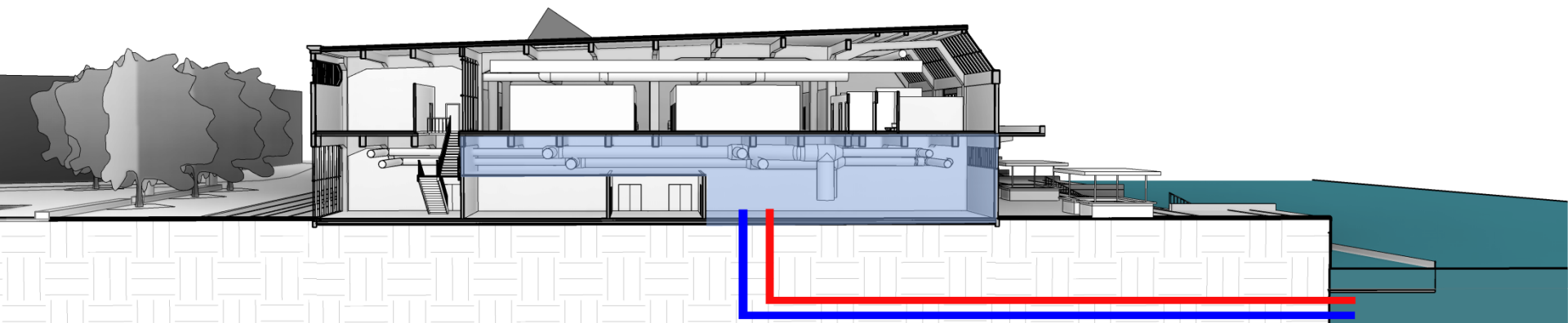
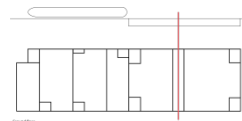
Quay



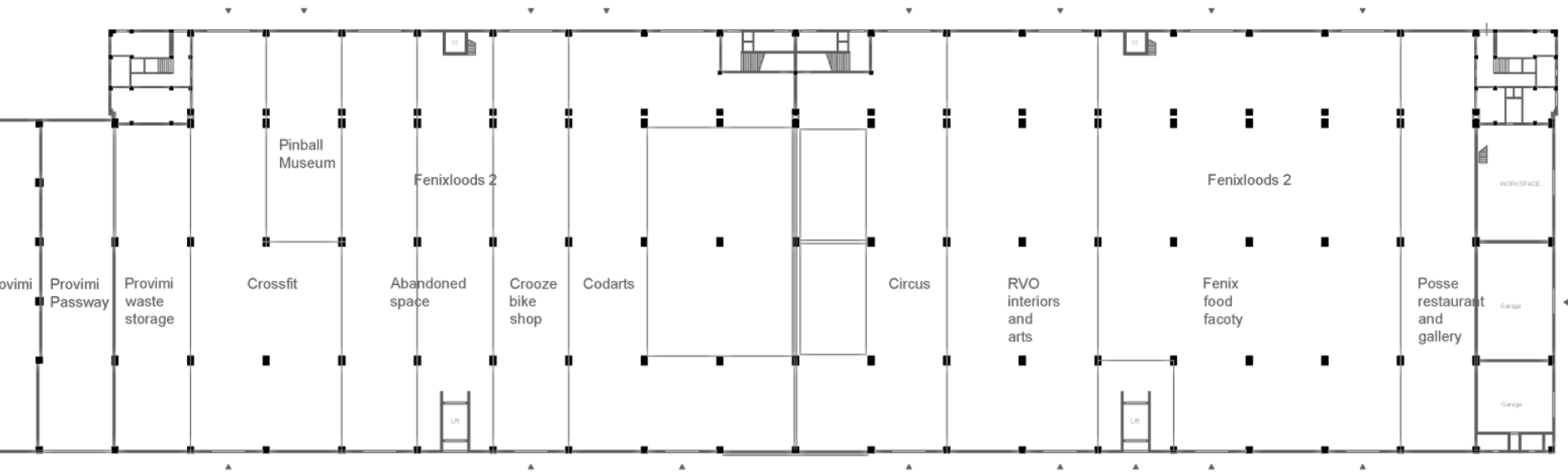
Quay



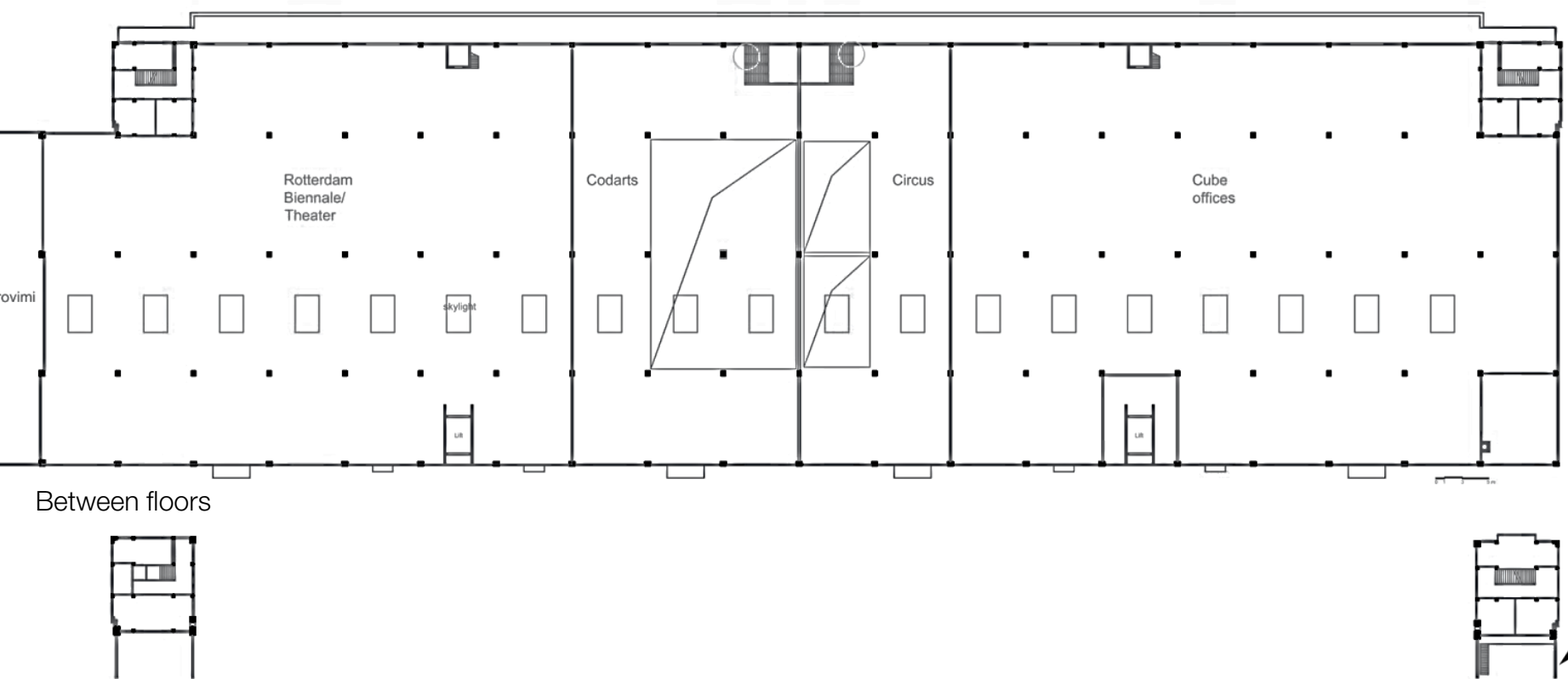
Quay



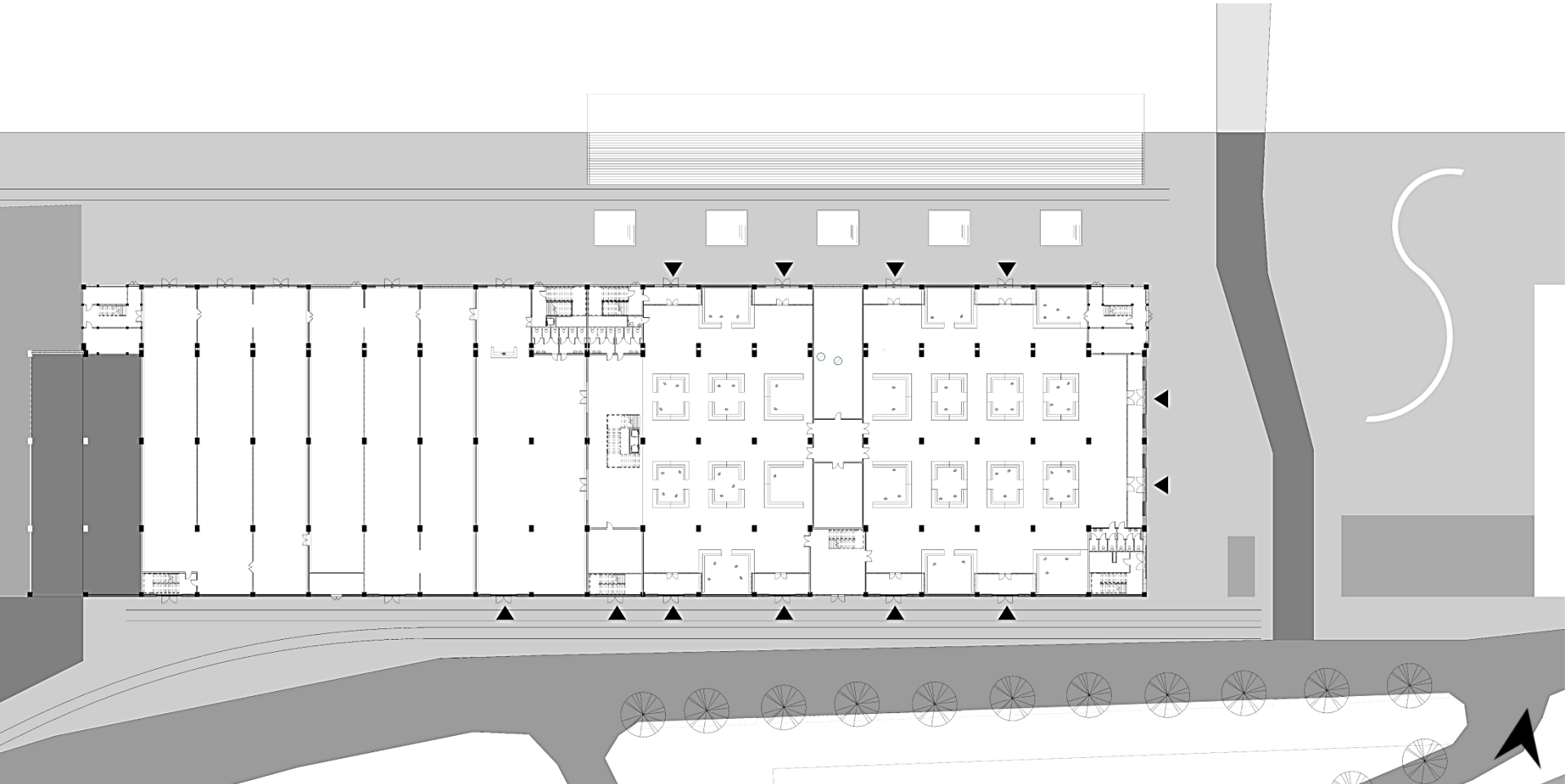
Floor plan – Existing Ground floor



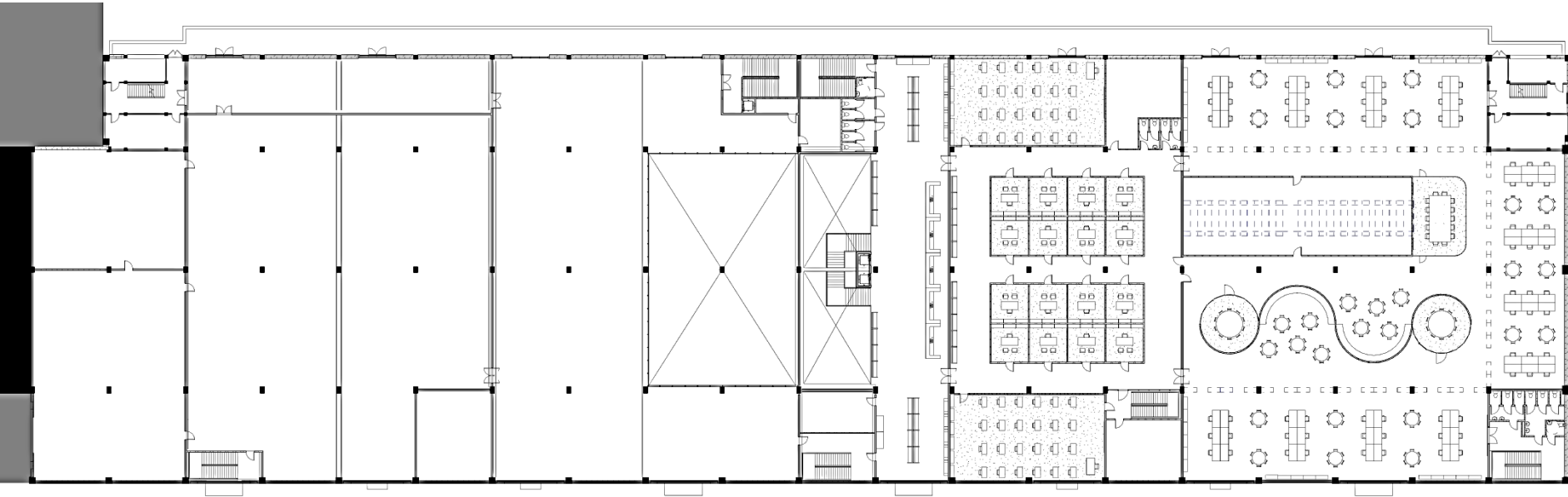
Floor plan – Existing First floor



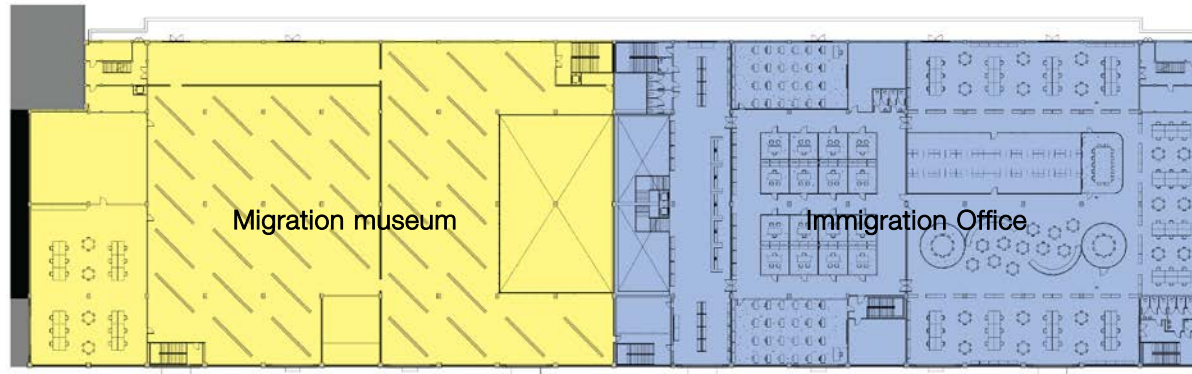
Floor plan – Ground floor



Floor plan – First floor



Functions



Migration Museum

Programme of demands

- Room for a permanent exposition
- Two rooms for temporary expositions
- Room for film and audio
- Bookshop
- Offices
- Storage
- Employees room
- Toilets (four per floor) + Miva
- Elevator

Climate demands

- “Complete air” system + moisture controlled
- Mechanical heating and cooling through air
- Times to ventilate per hour = 4 h-1

Opening hours 9:00-18:00

Migration Museum

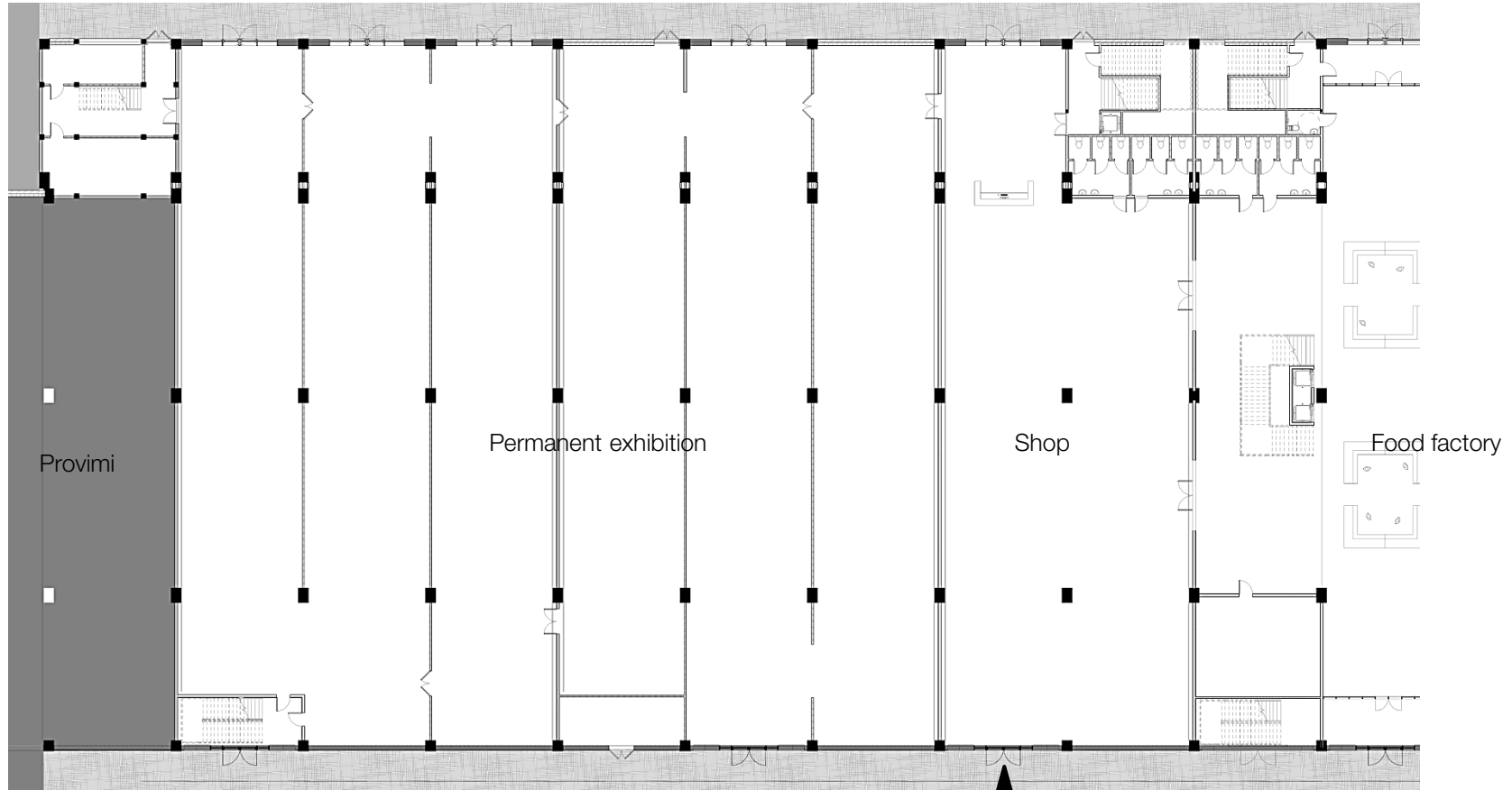
Docklands, London



Red Star line, Antwerp

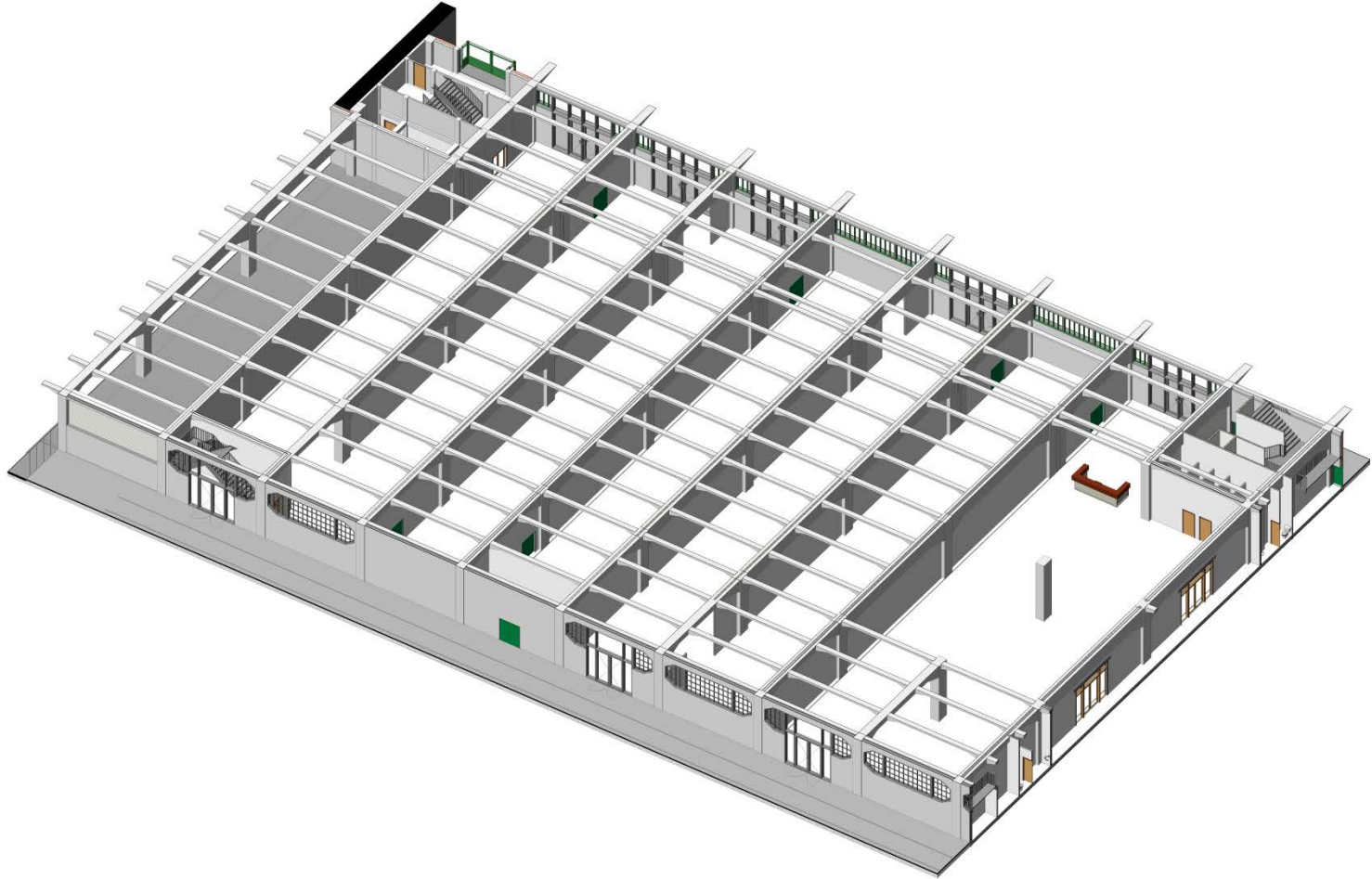


Migration Museum



Ground floor

Migration Museum



Migration Museum

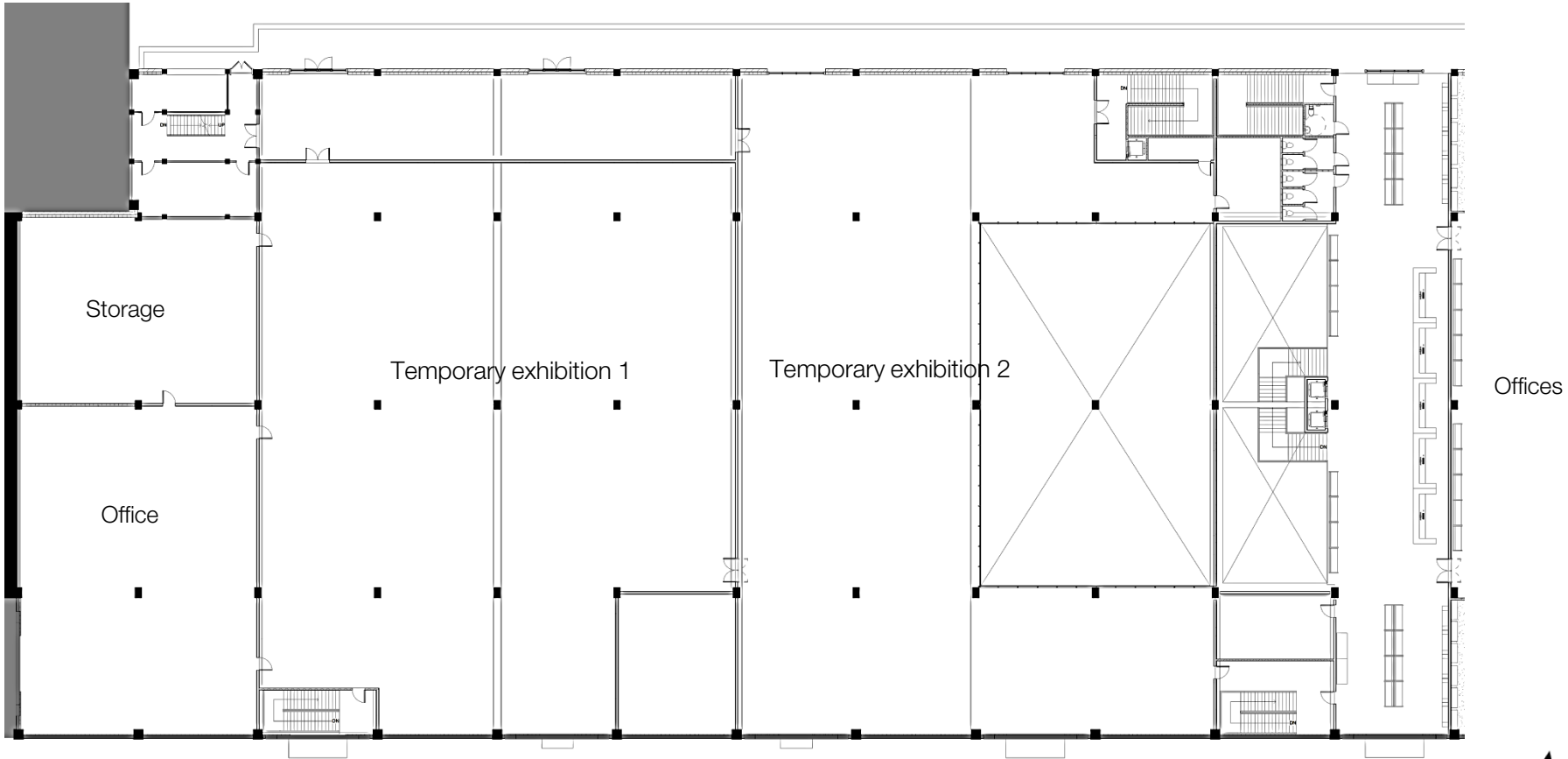
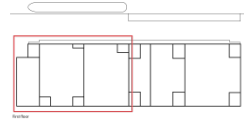
Kunsthal, Rotterdam



Tate Modern, London



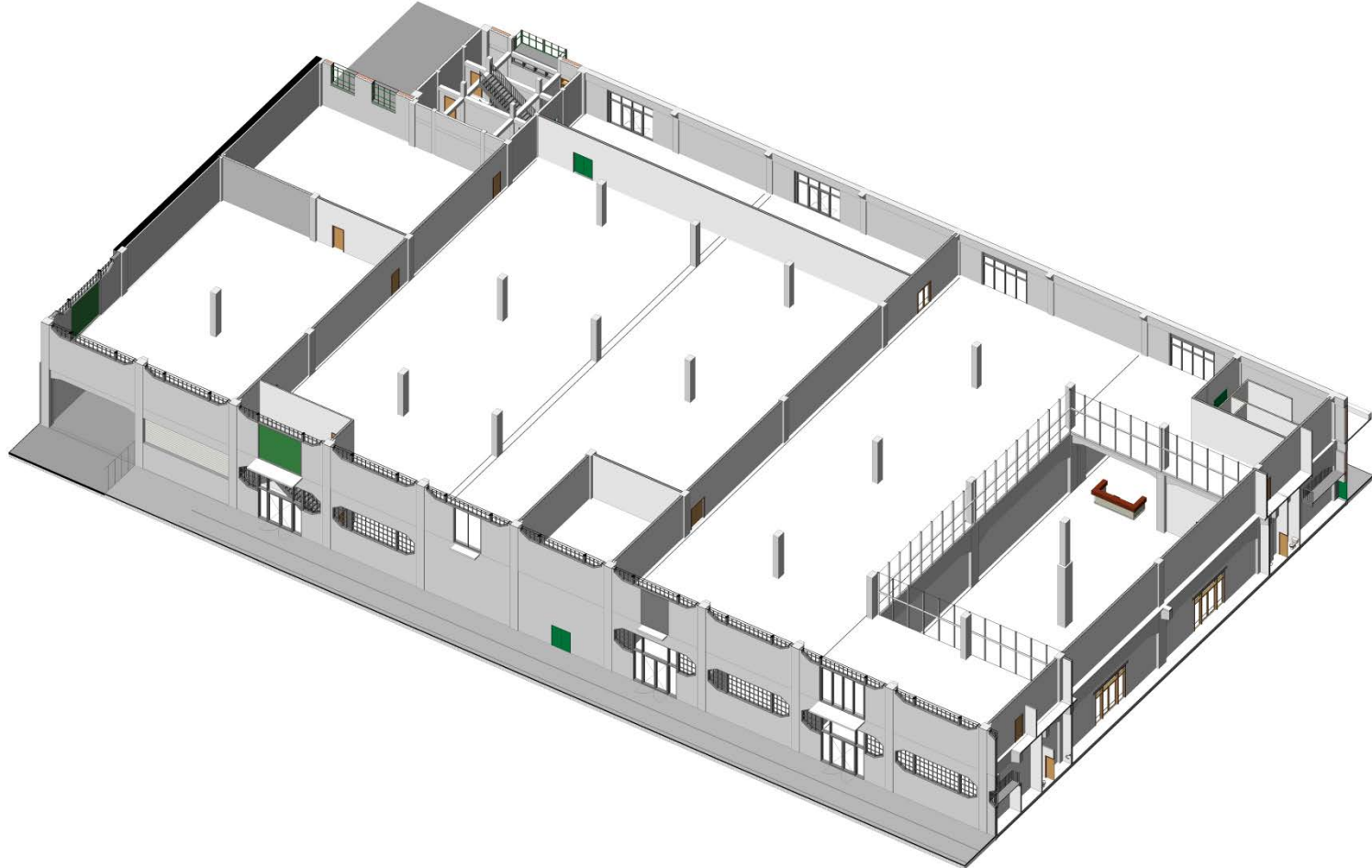
Migration Museum



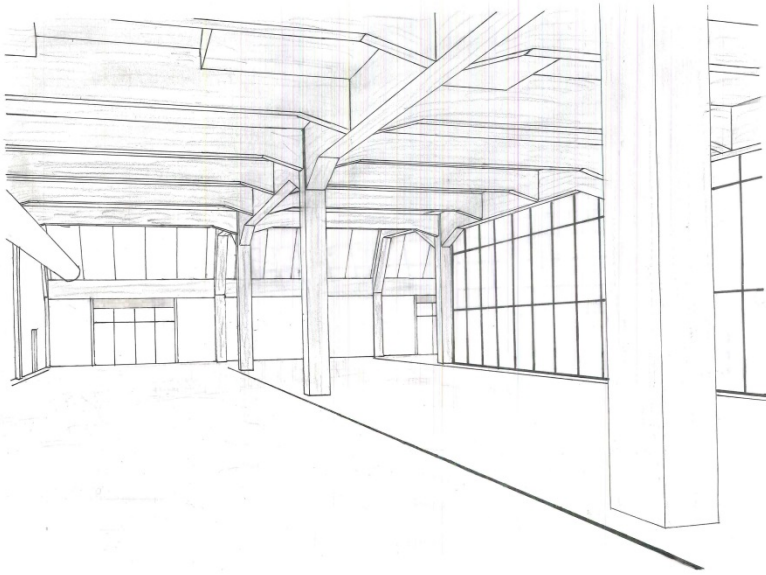
First floor



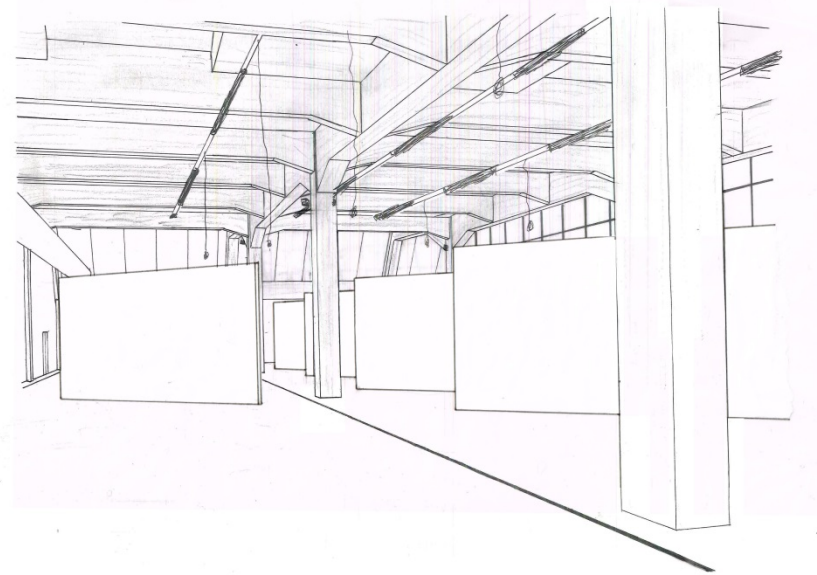
Migration Museum



Migration Museum



Migration Museum



Migration Museum



Food court

Programme of demands

- Food stands
- Sitting area
- Cafe
- Terrace area
- Temporary stands
- Four toilets + Miva

Climate demands

- “Complete air” system
- Mechanical heating and cooling through air
- Times to ventilate per hour = 6 h⁻¹

Opening hours 9:00-23:00

Food court - Existing



Food court - Markthal

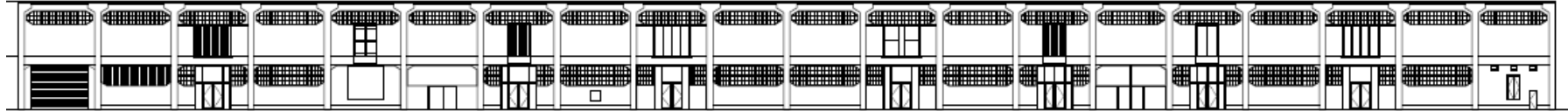
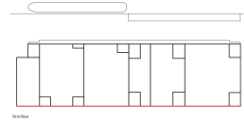


Food court

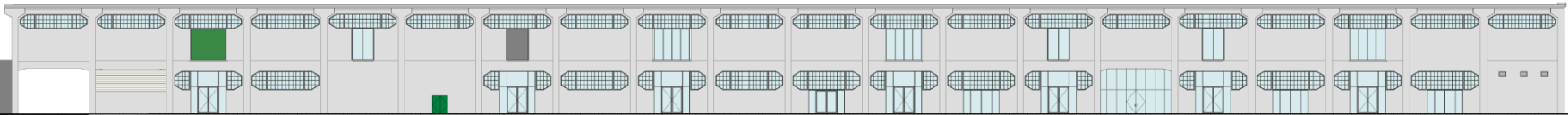


Changes in the facades South Facade

Existing

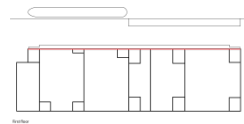


New

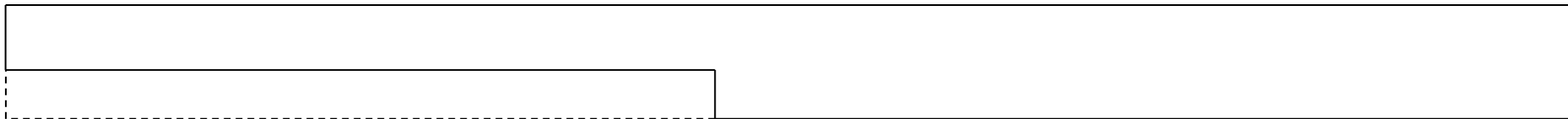


Changes in the facades North Facade

Existing

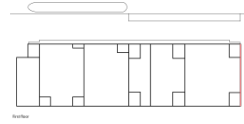


New



Changes in the facades

East Facade



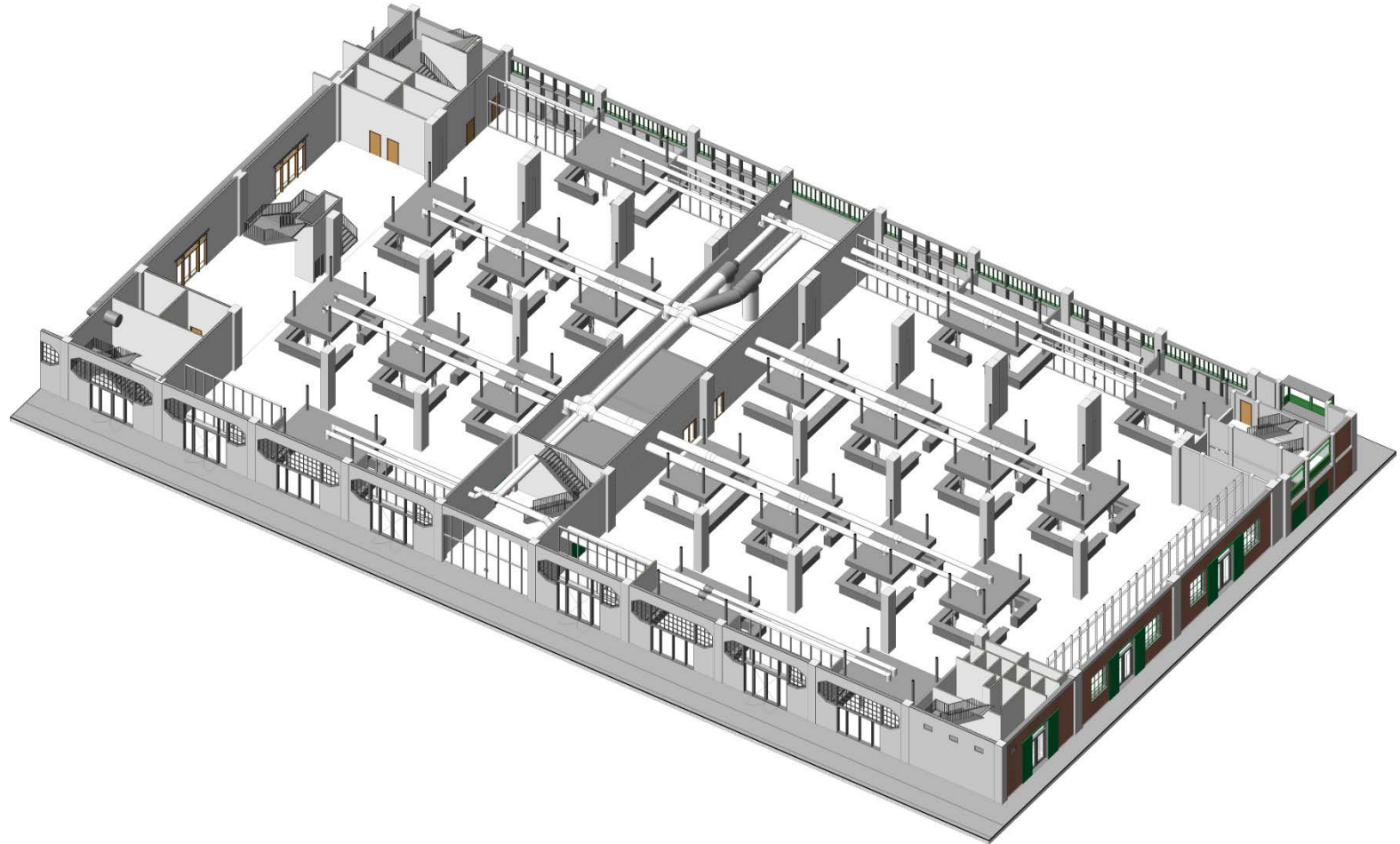
Existing



New



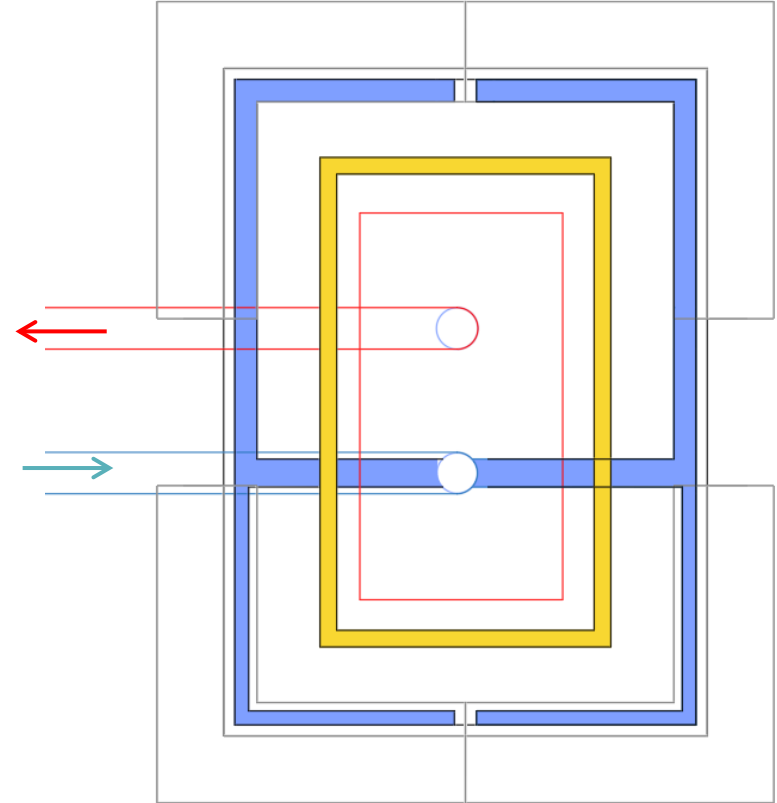
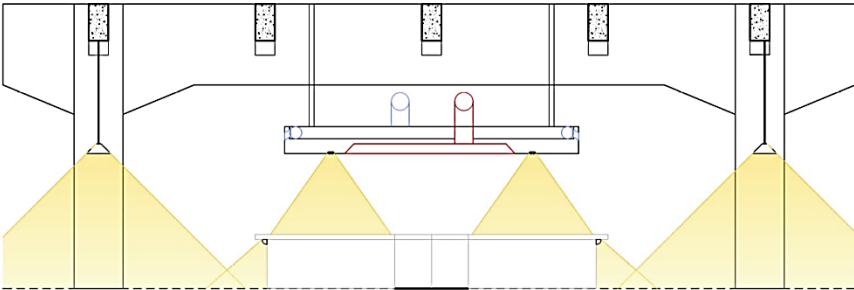
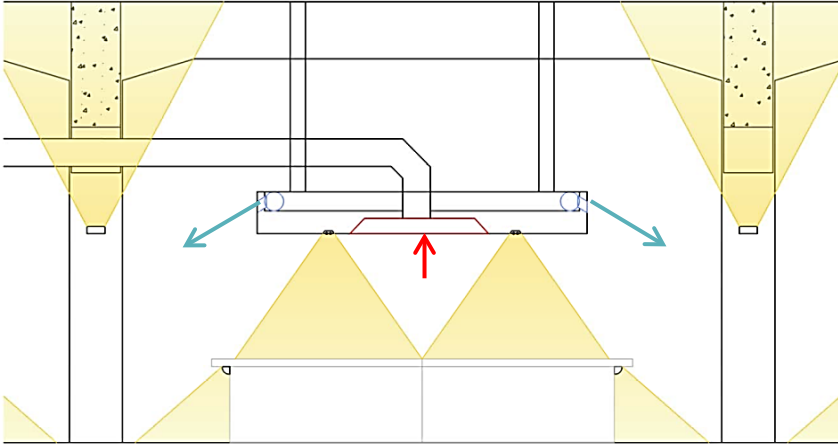
Food court



Food court



Food court



Immigration offices

Programme of demands

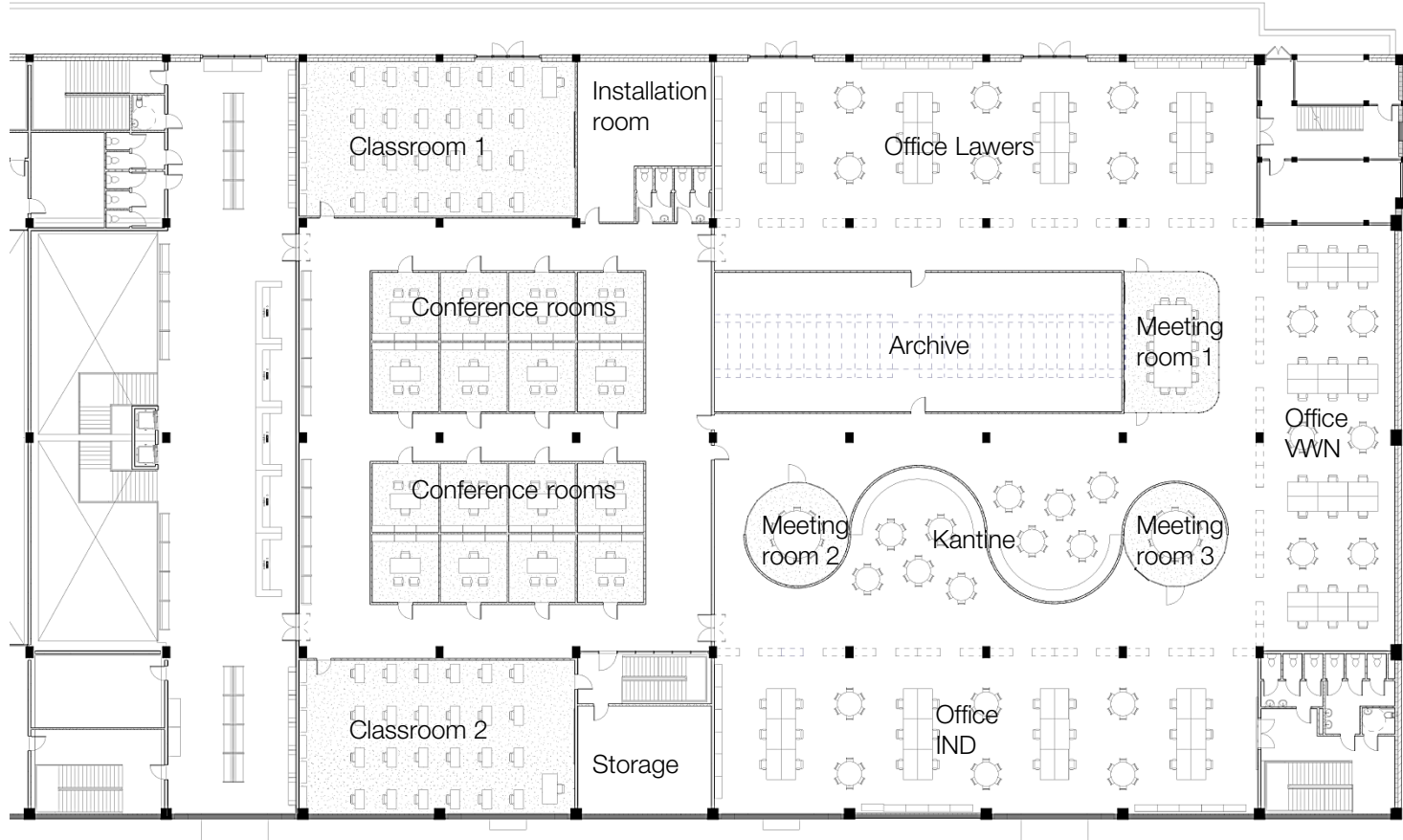
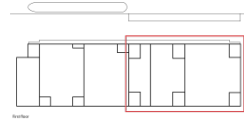
- Offices IND
- Offices VWN
- Offices lawyers
- Meeting rooms
- Archive
- Conference rooms
- Two Classrooms
- Storage
- Waiting room
- Reception desk
- Four toilets + Miva

Climate demands

- Mechanical ventilation
- Mechanical heating and cooling through floor heating
- Times to ventilate per hour = 3 h⁻¹

Opening hours 9:00-18:00

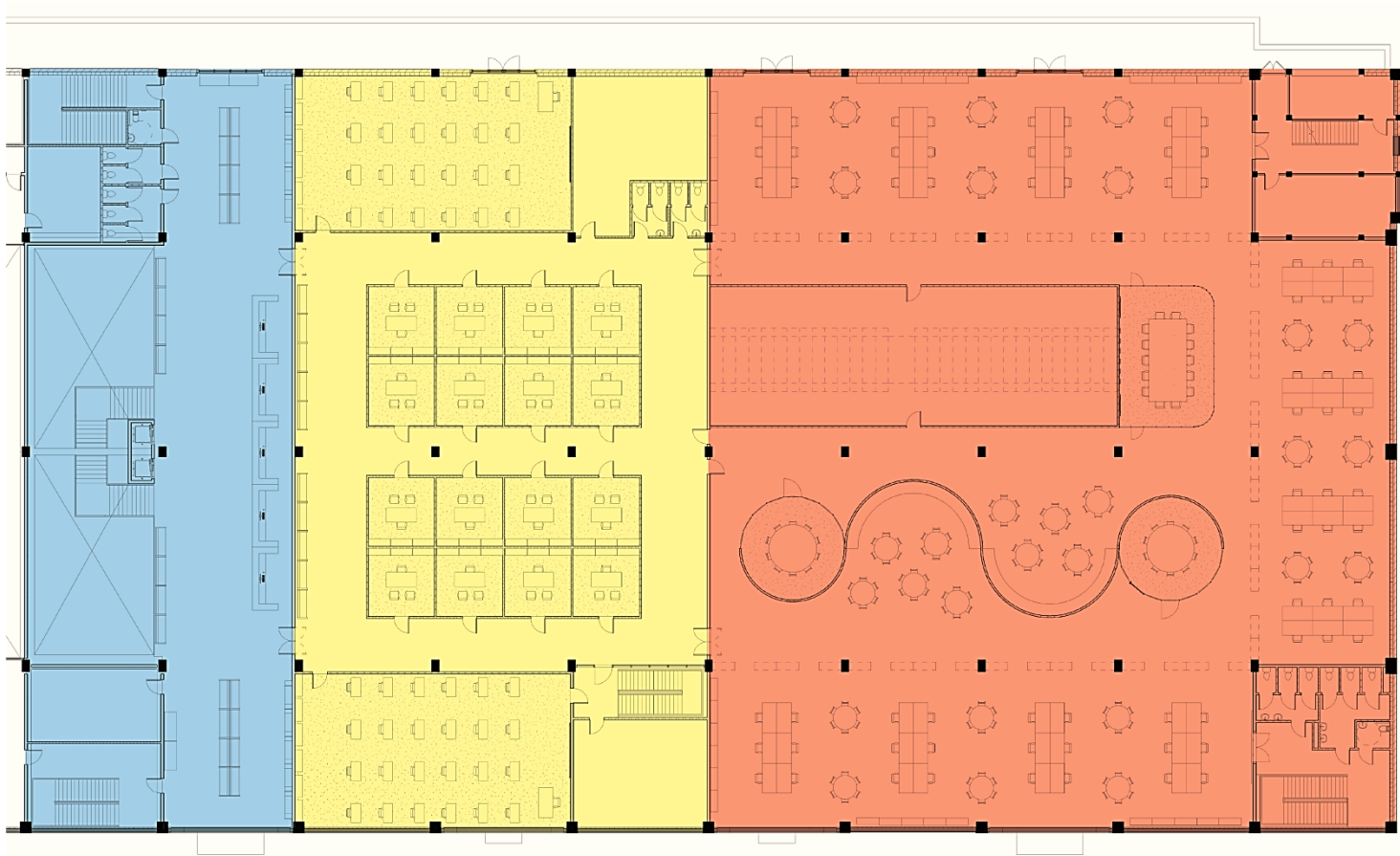
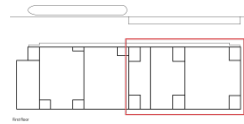
Immigration offices



First floor



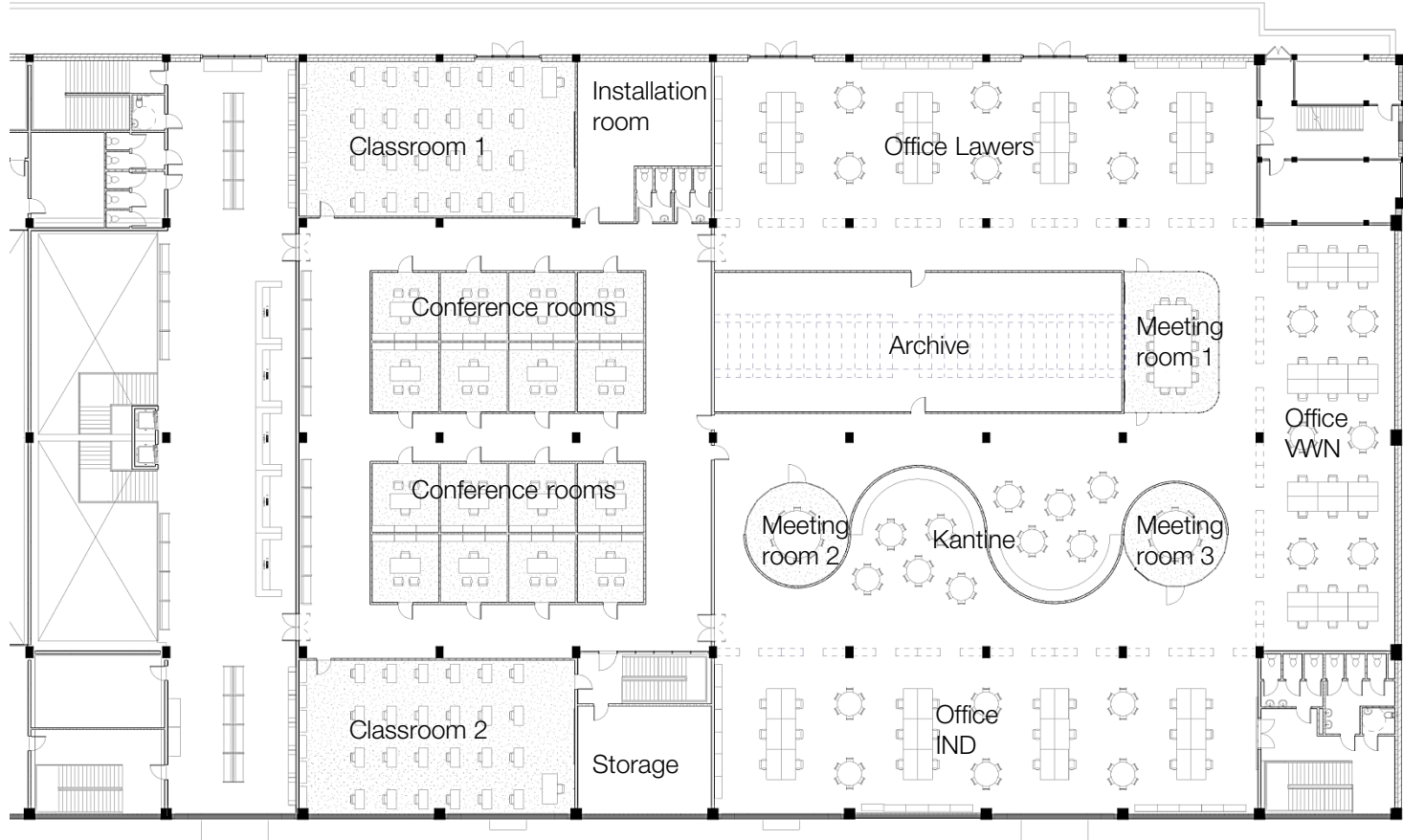
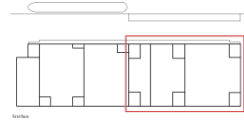
Immigration offices



First floor



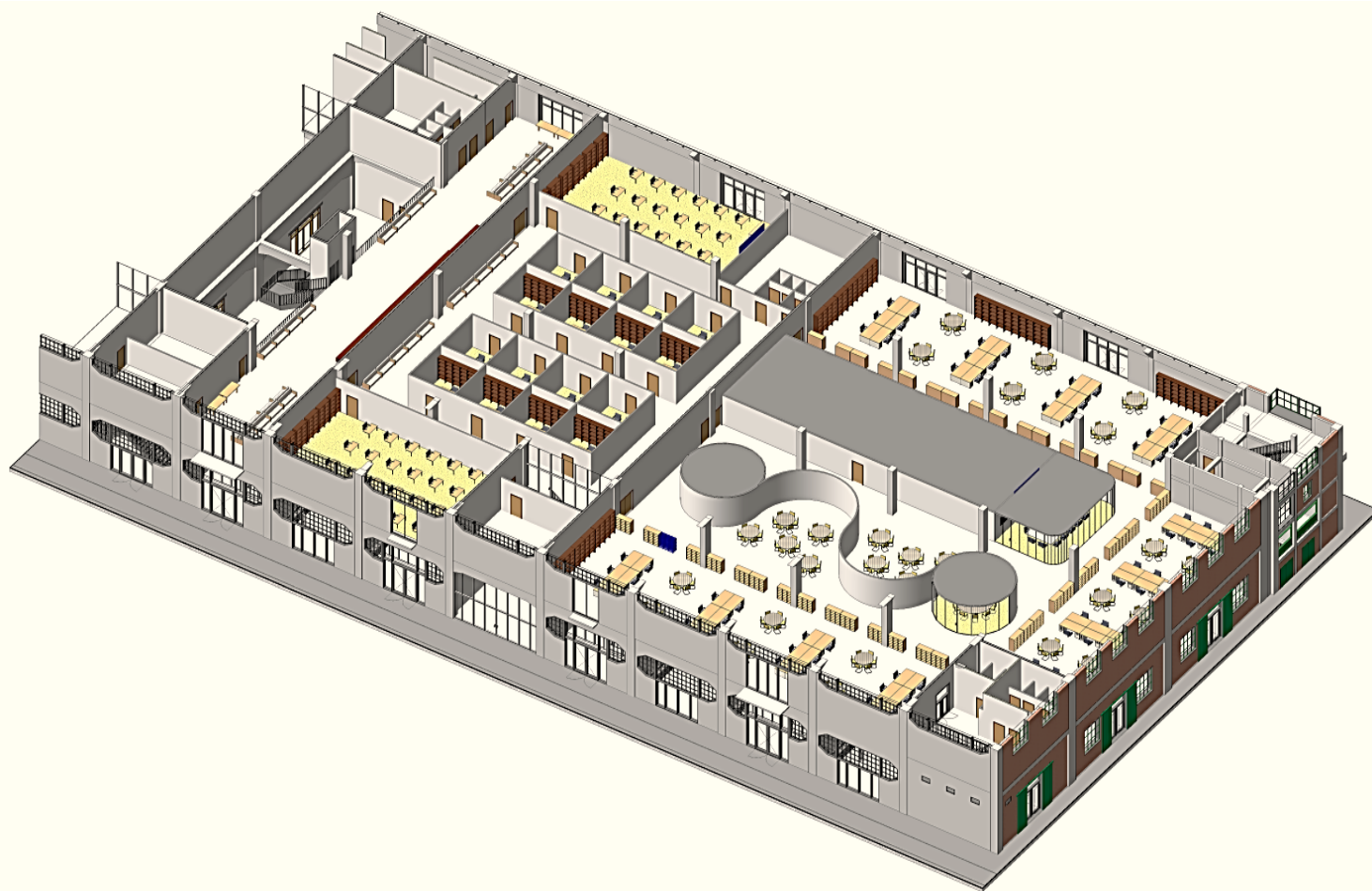
Immigration offices



First floor



Immigration offices



Immigration offices



Indoor climate - Insulation



North facade



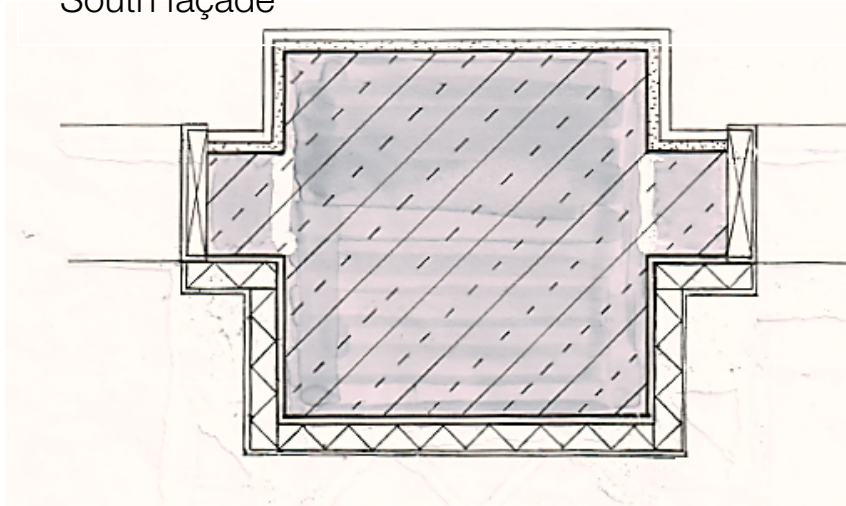
East facade



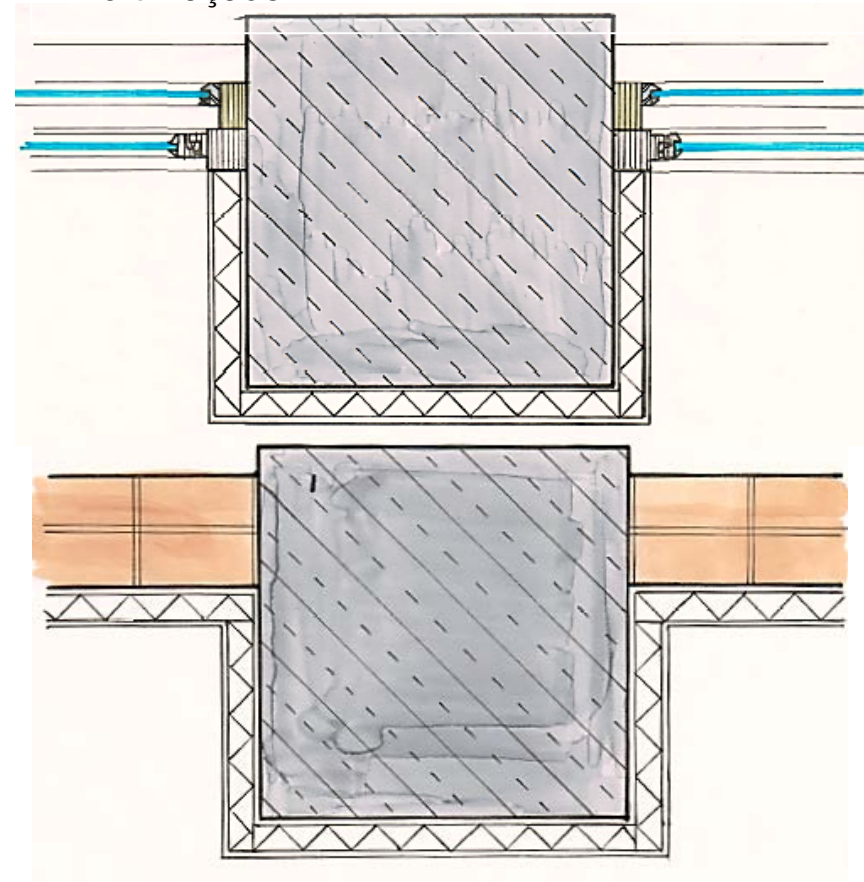
South facade

Indoor climate - Insulation

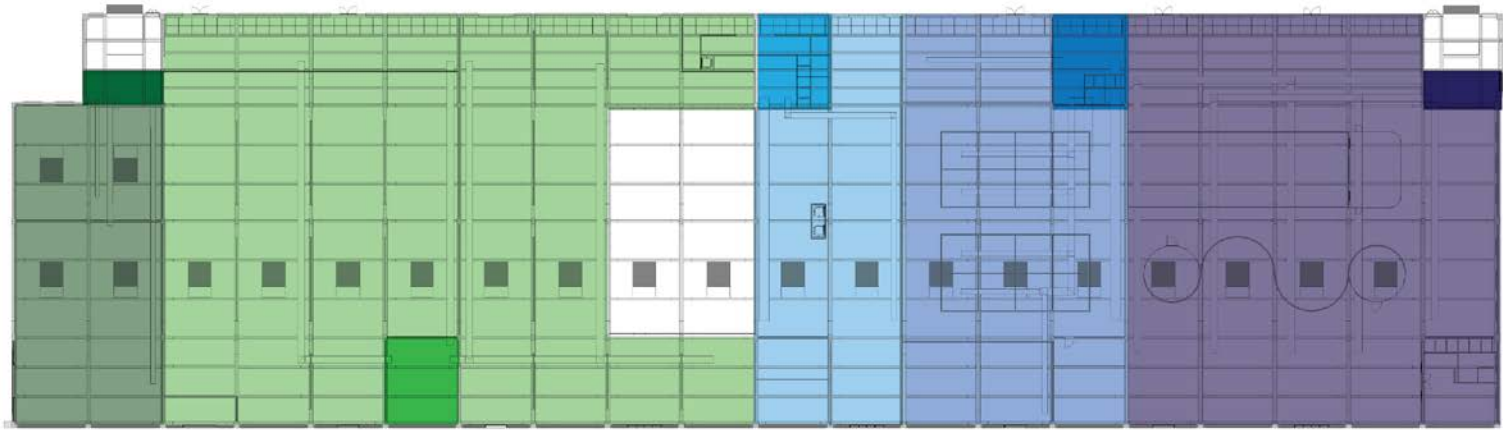
South façade



North façade



Indoor climate - Ventilation



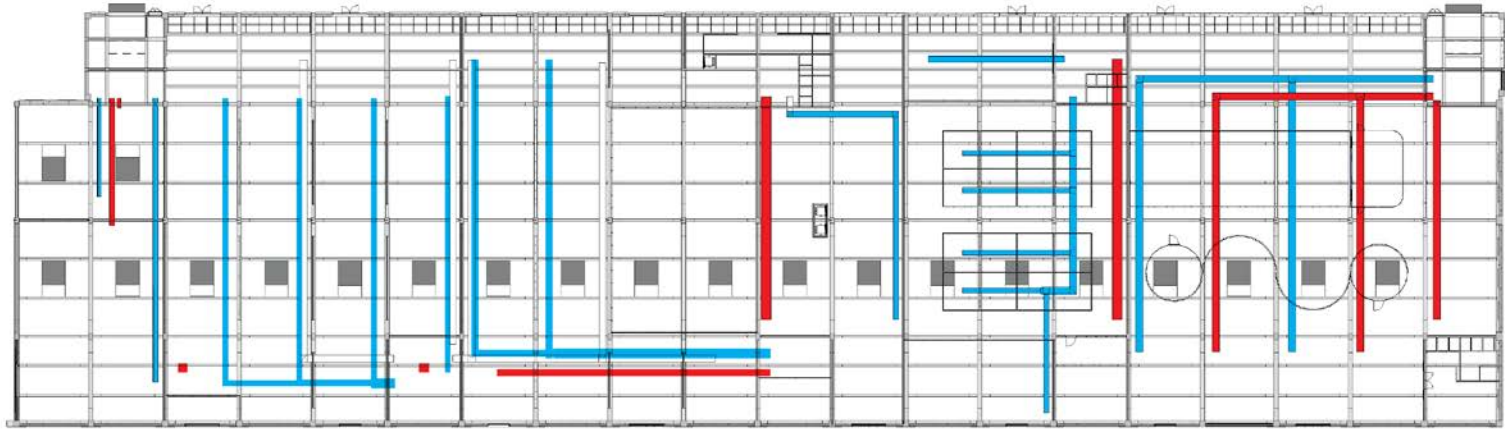
First floor



Ground floor



Indoor climate - Ventilation



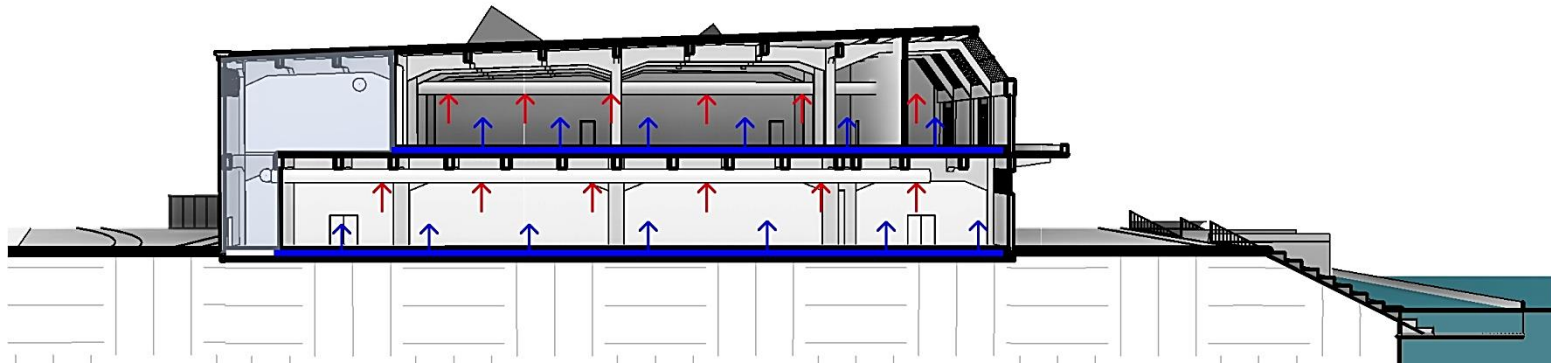
First floor



Ground floor

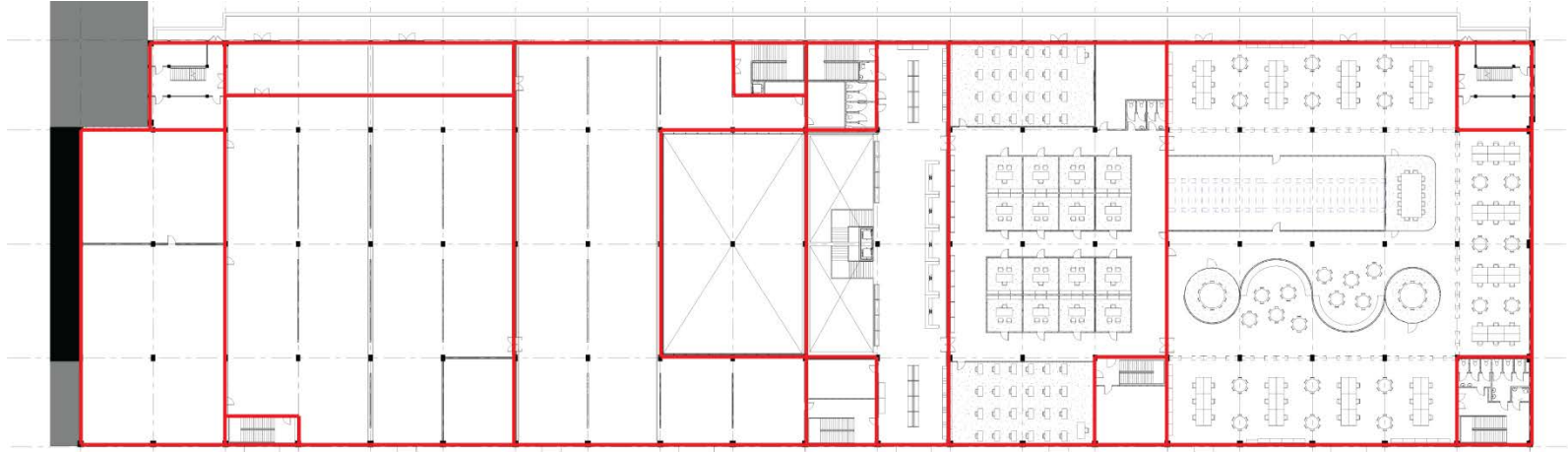


Indoor climate - Ventilation

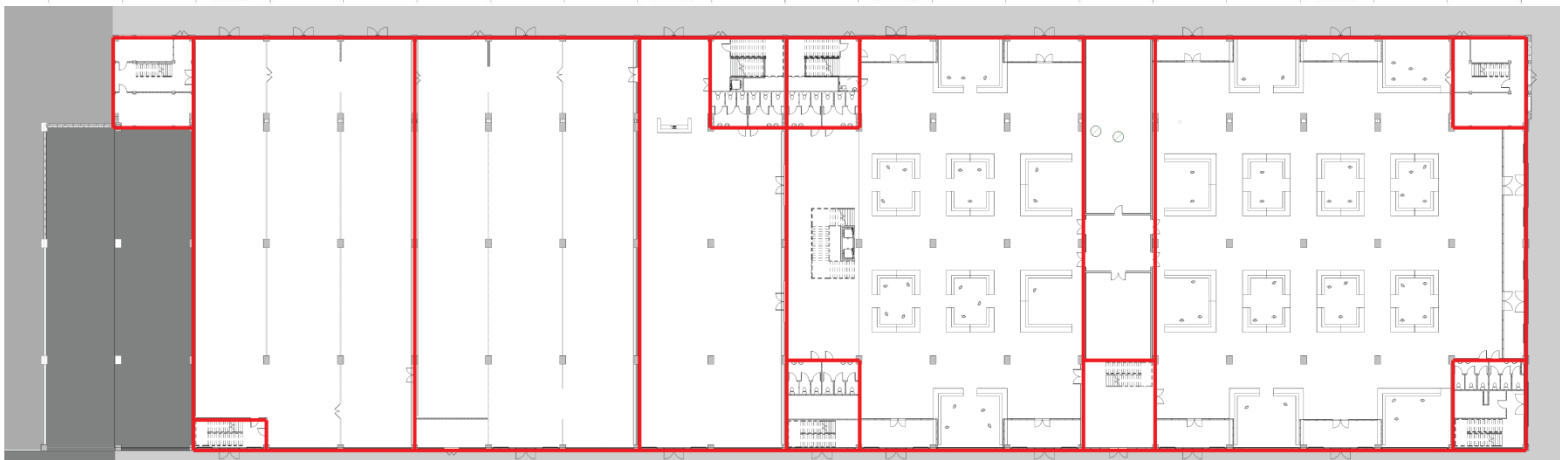


Fire safety – Compartments

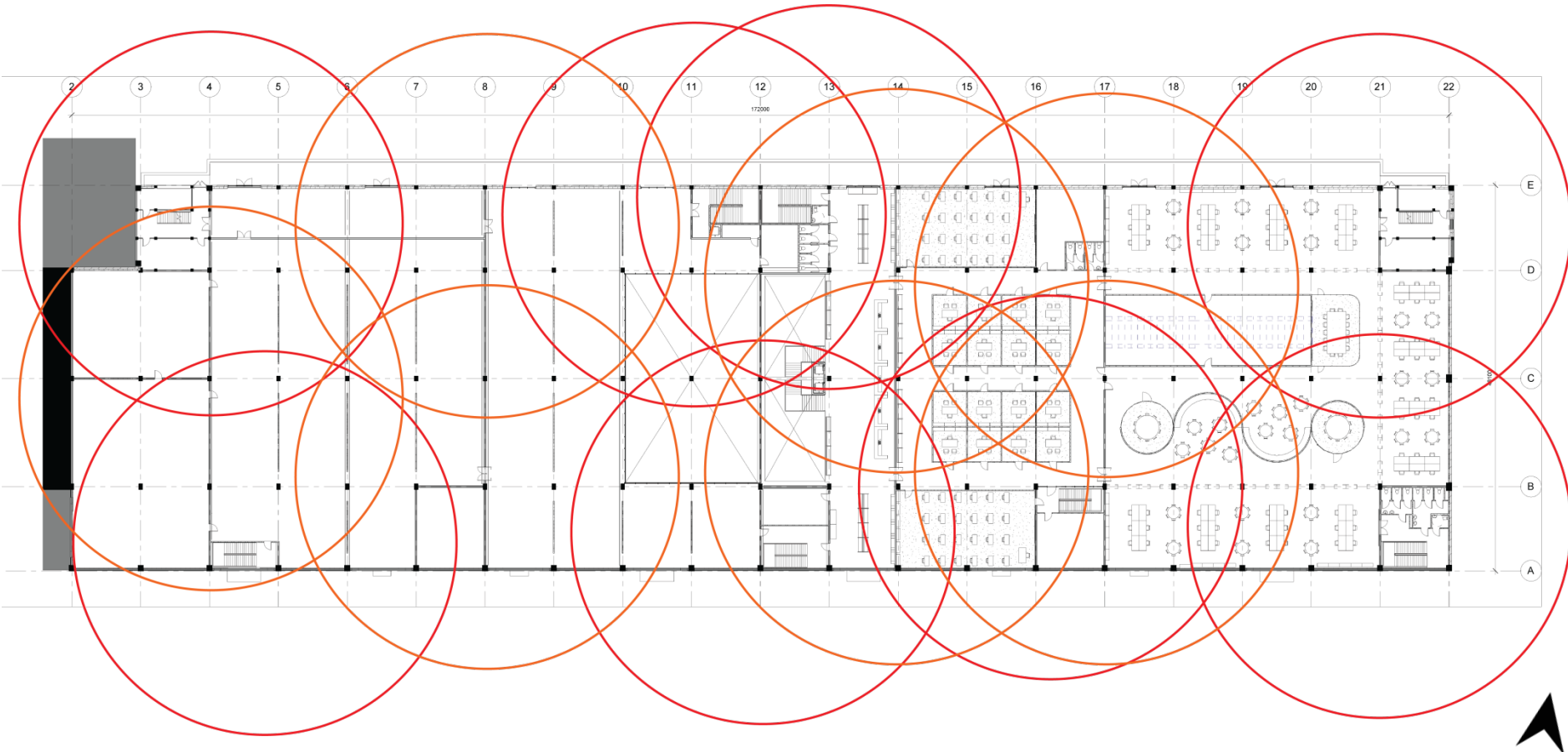
First floor



Ground floor



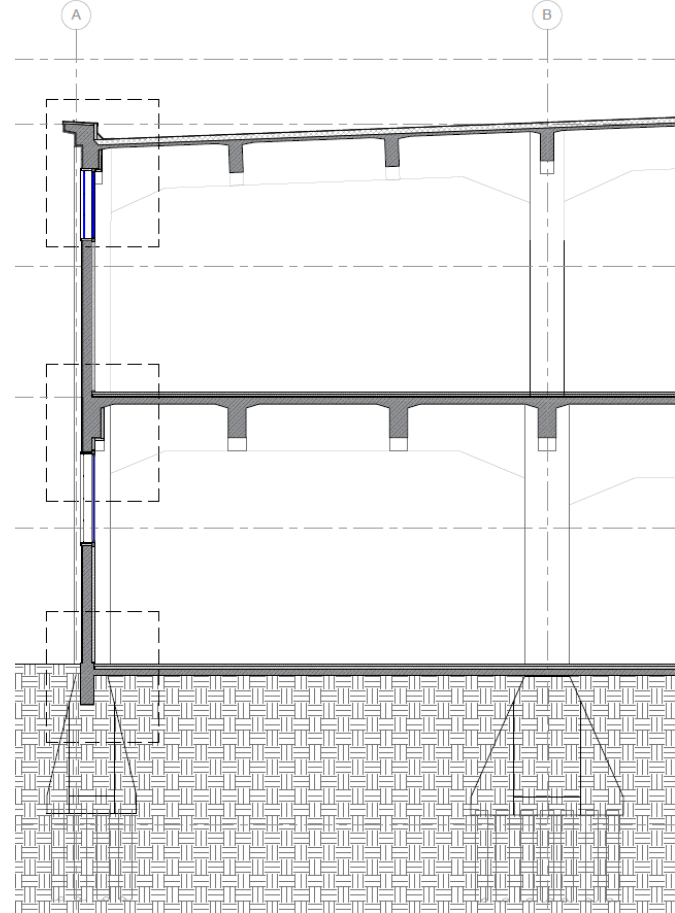
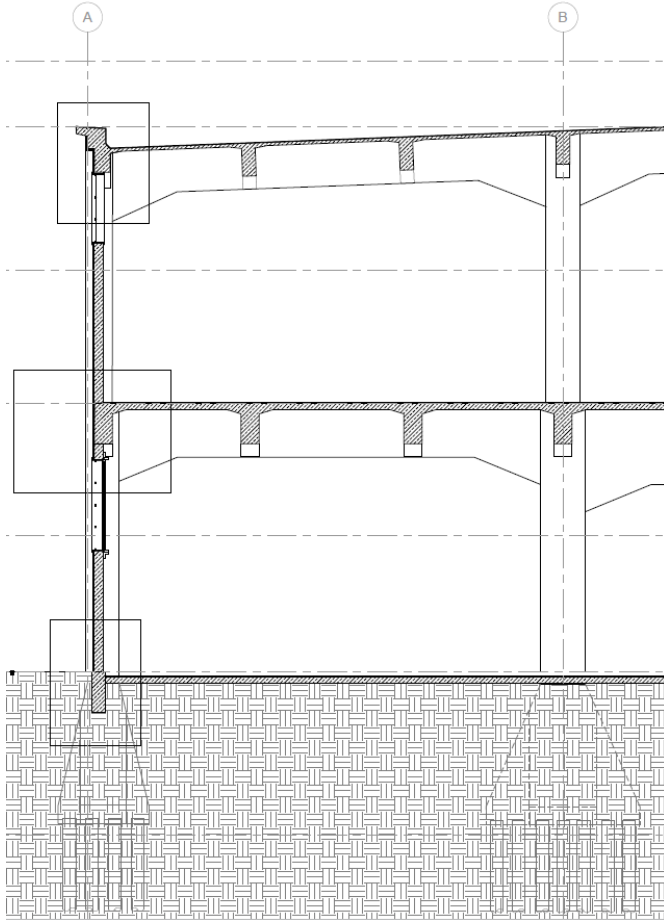
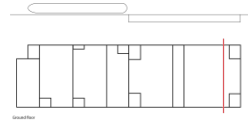
Fire safety



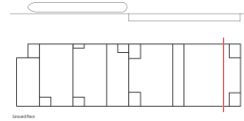
Fragment - Section



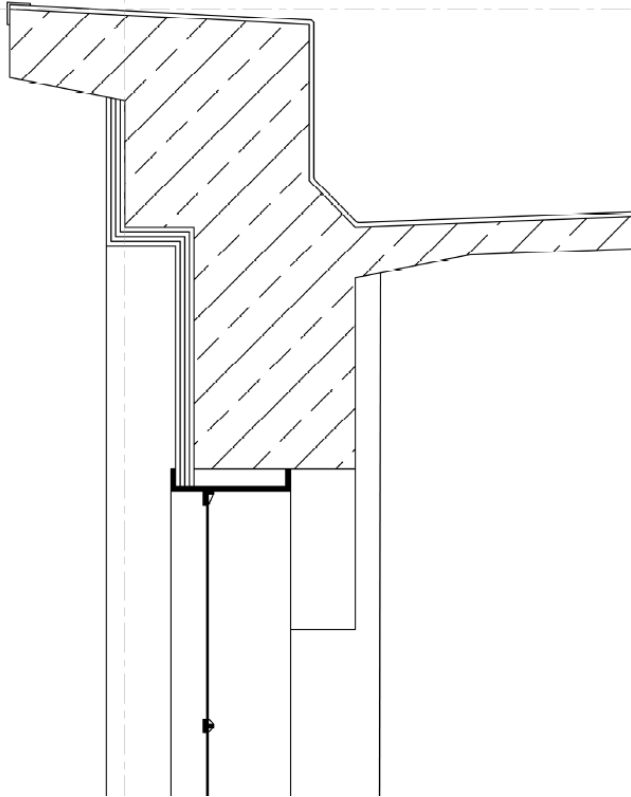
Fragment - Section



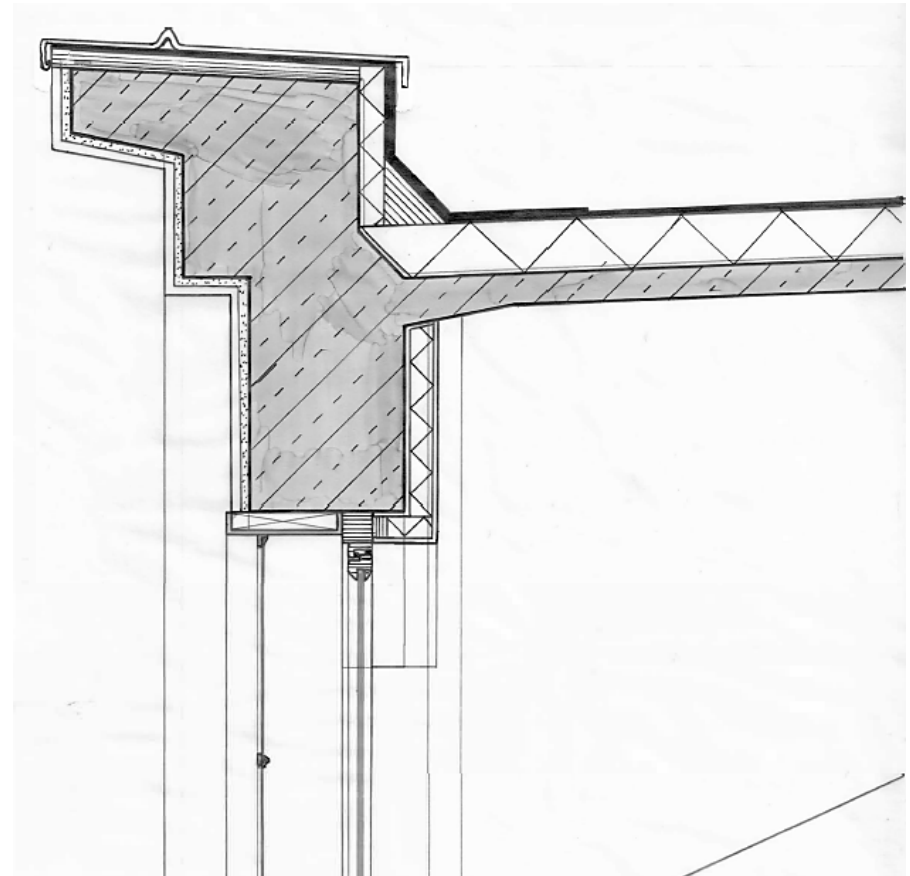
Details



Present detail

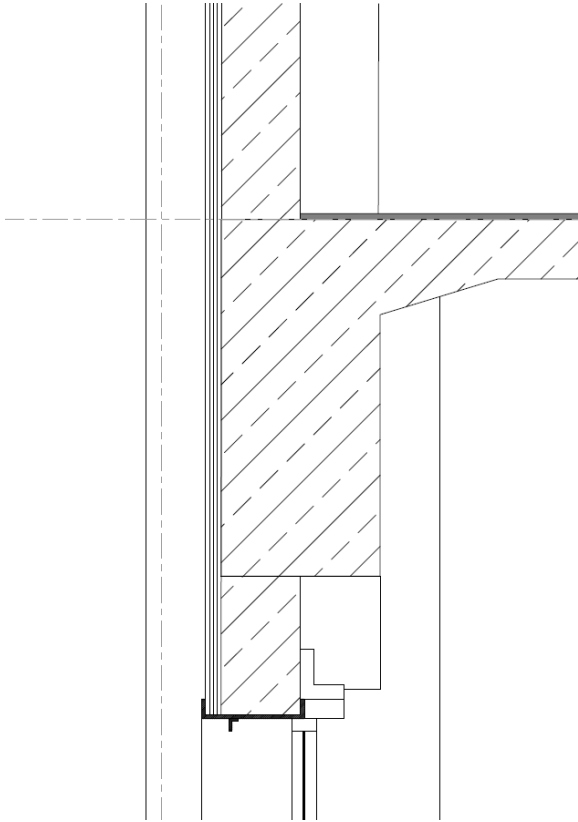


New detail

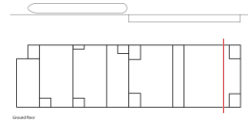
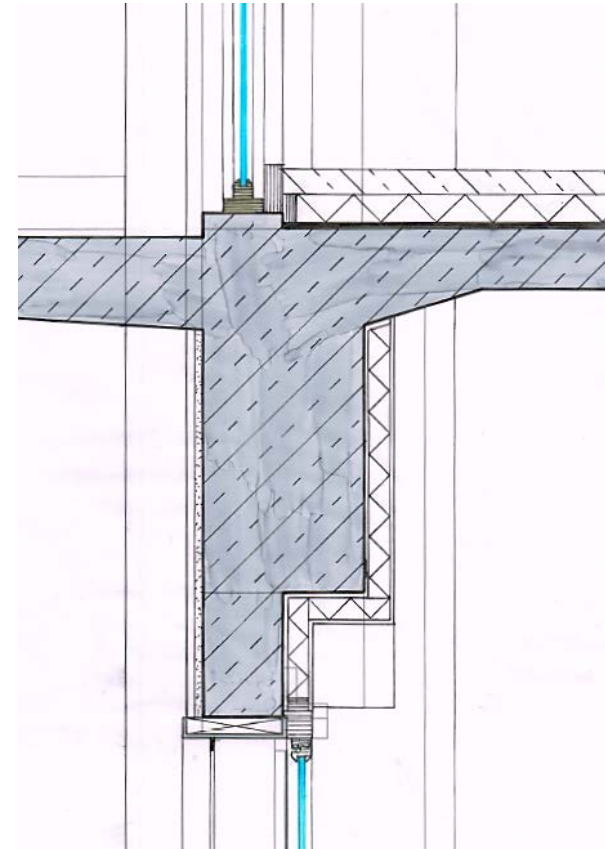
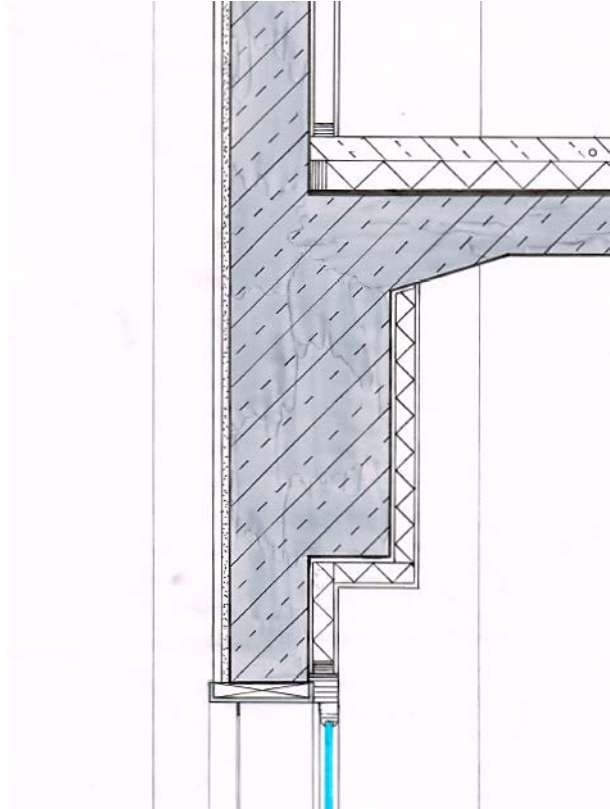


Details

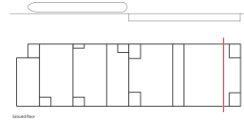
Present detail



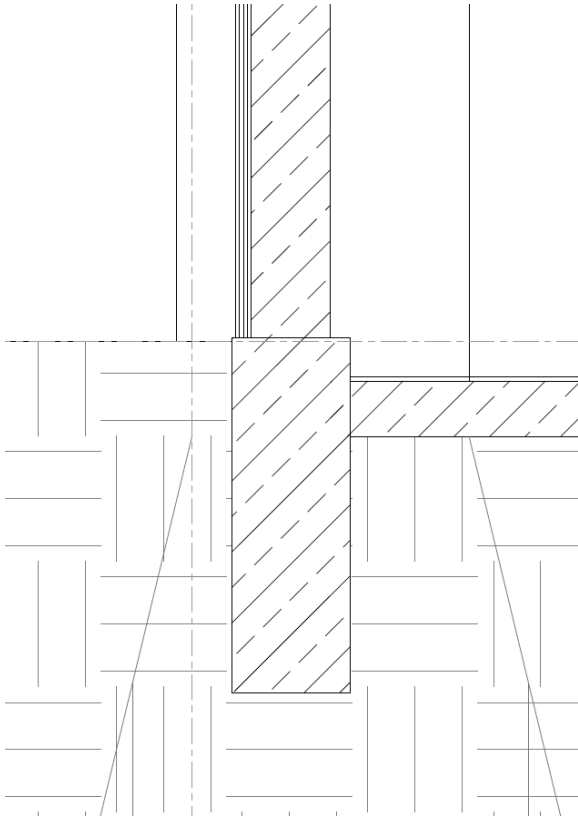
New detail



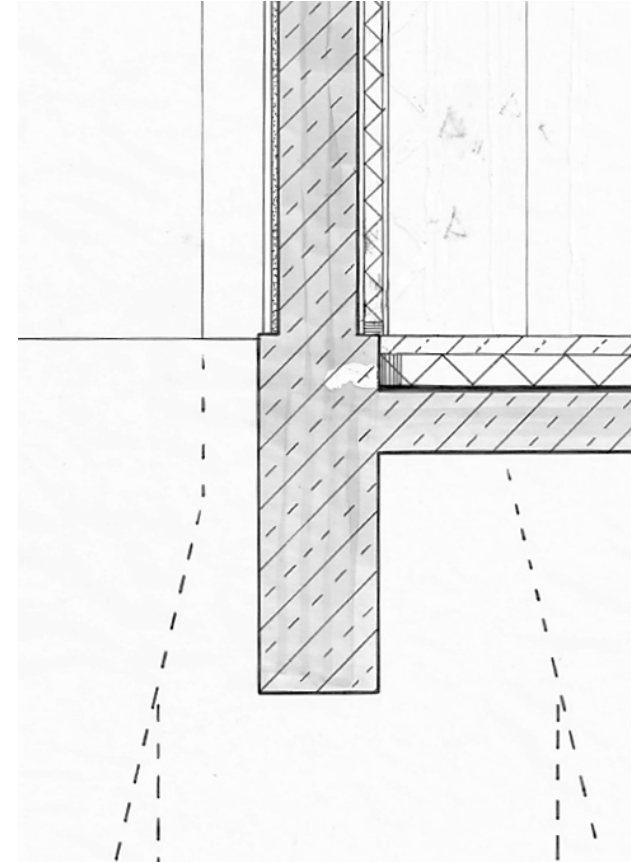
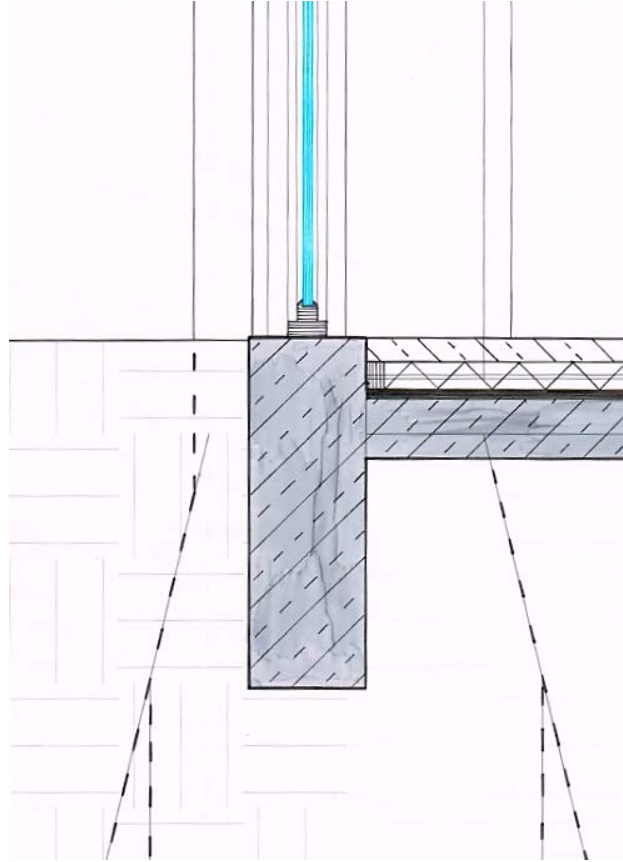
Details



Present detail

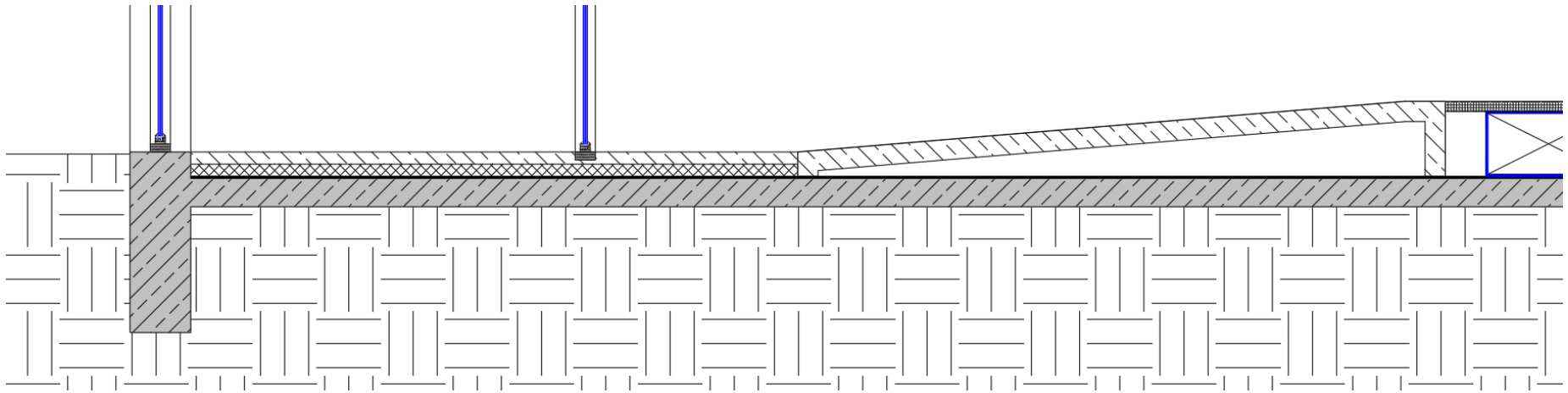
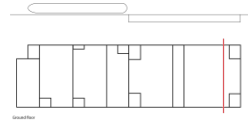


New detail

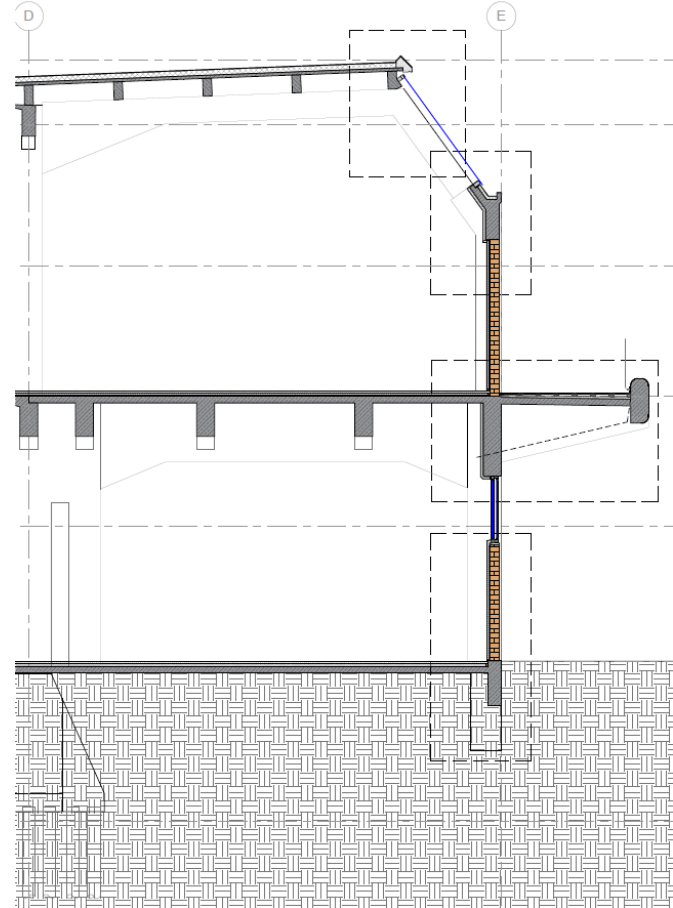
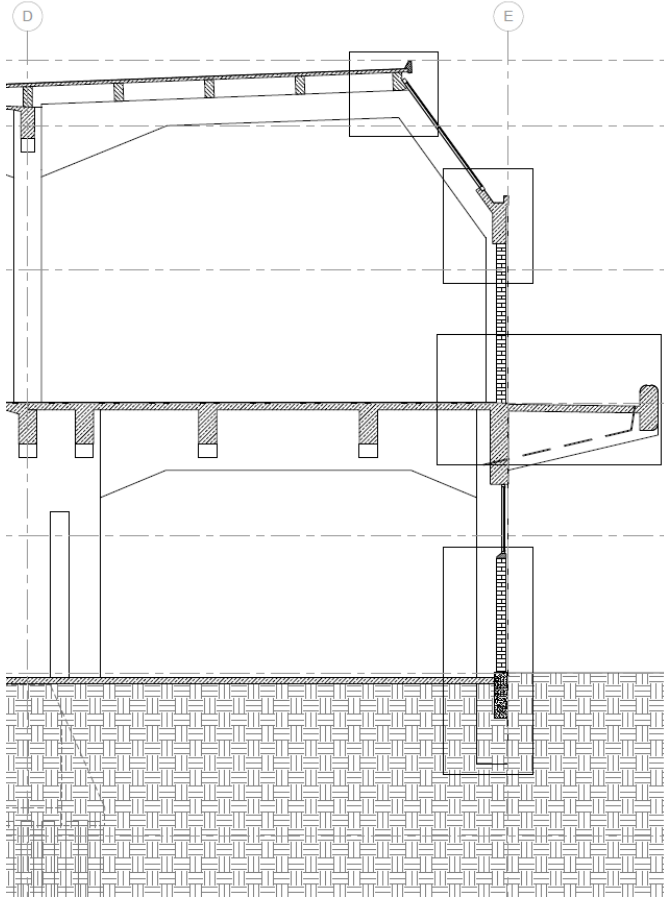
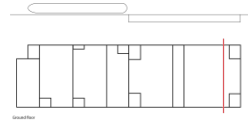


Details

New detail

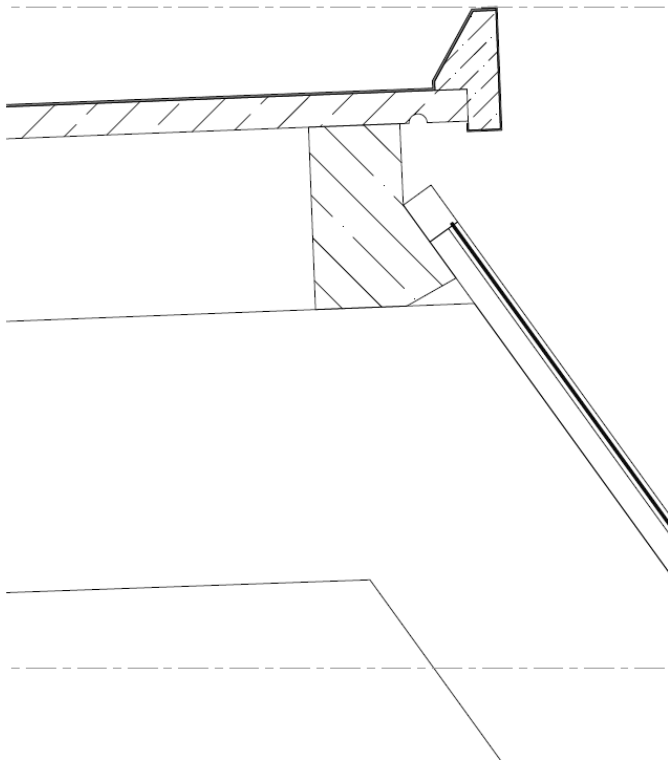


Fragment - Section

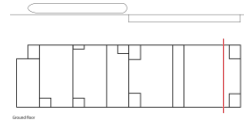
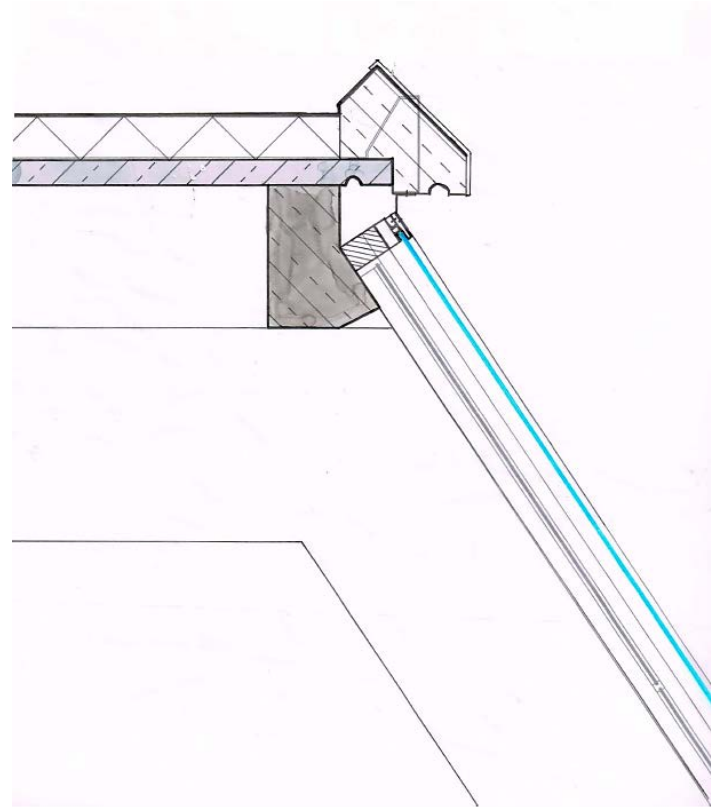


Details

Present detail

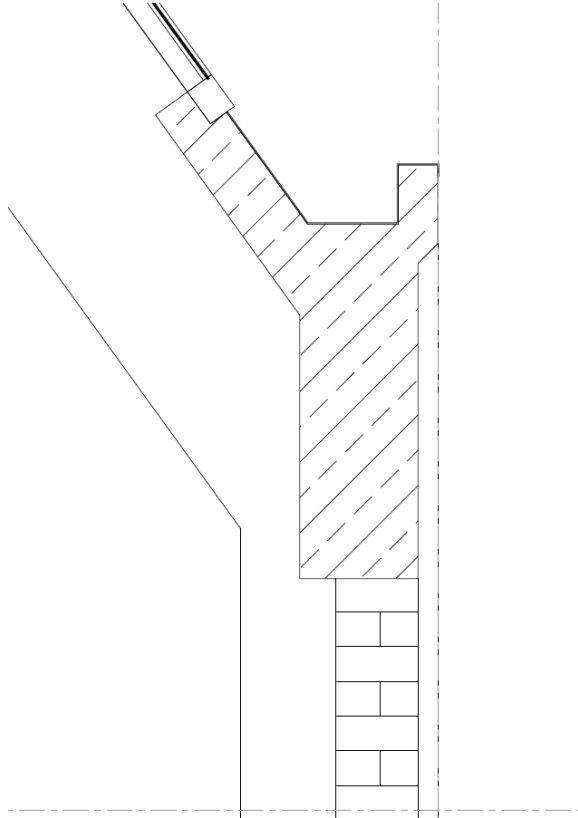


New detail

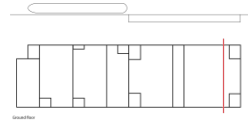
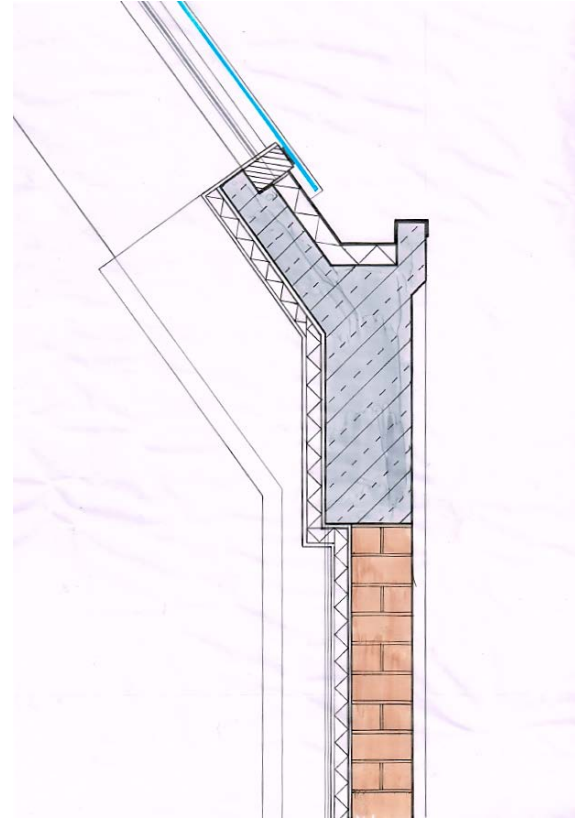


Details

Present detail

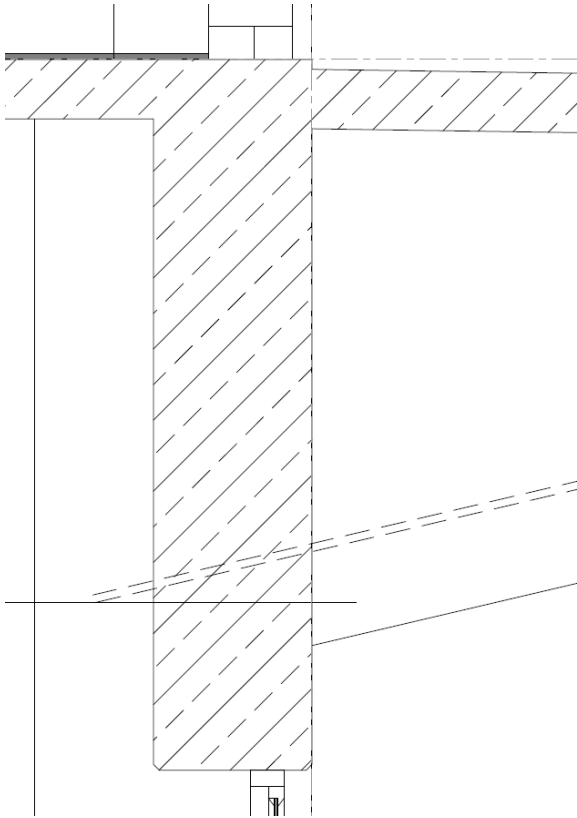


New detail

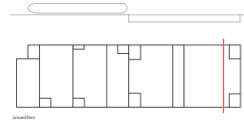
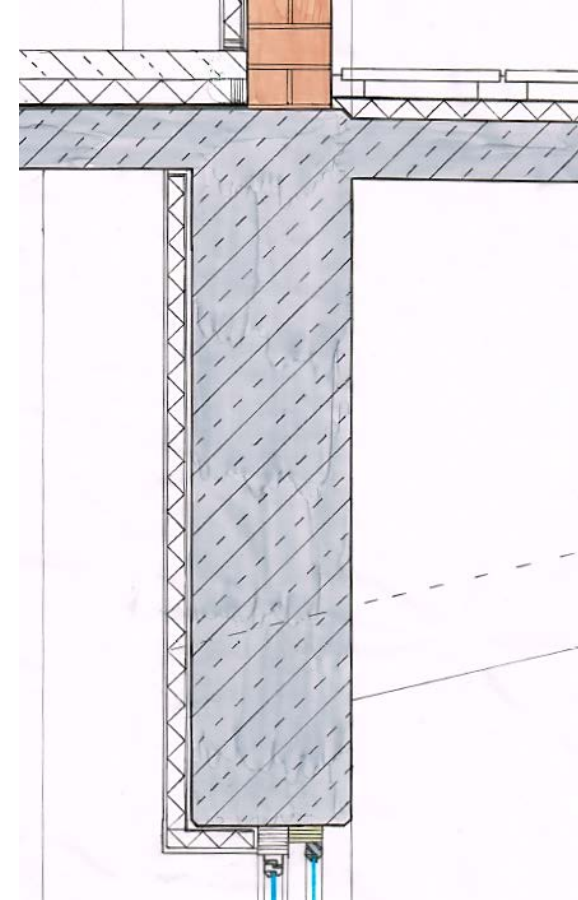
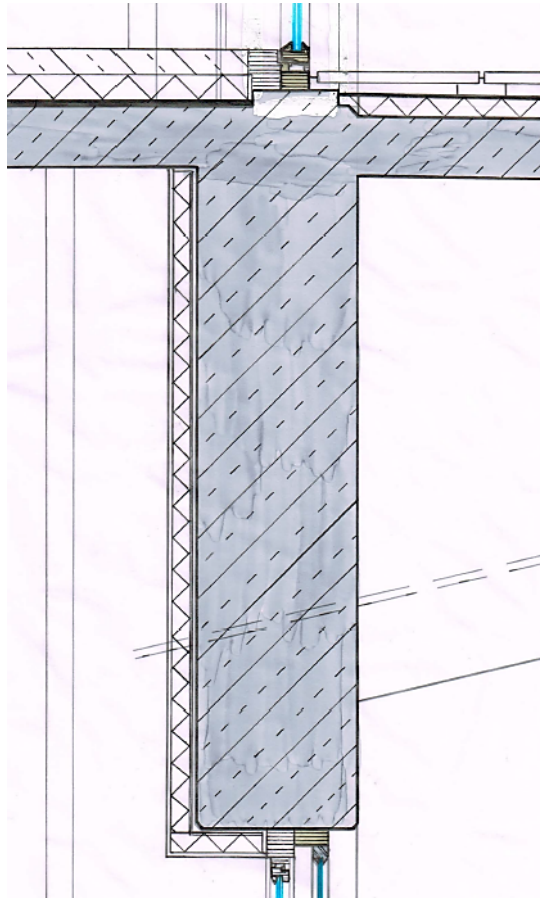


Details

Present detail

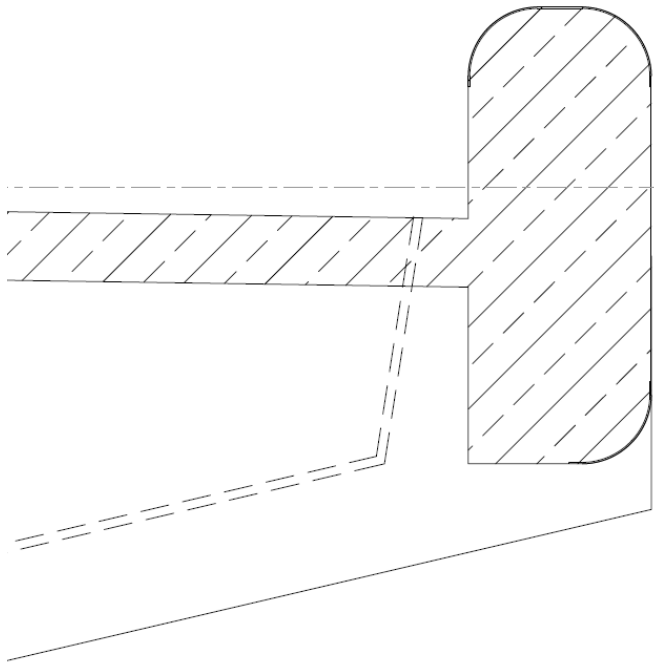


New detail

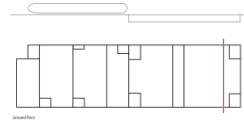
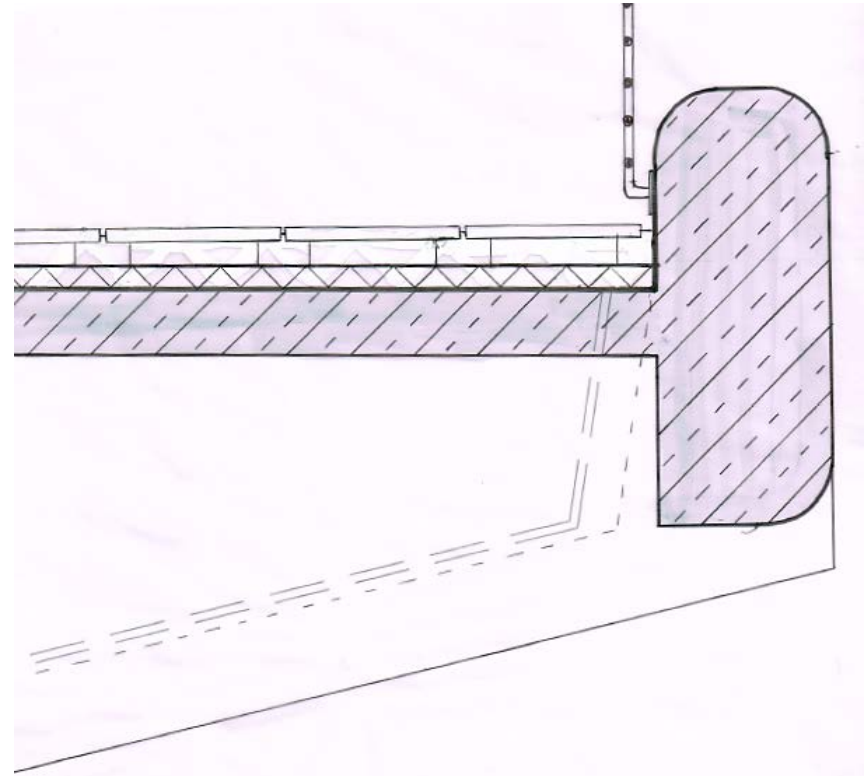


Details

Present detail

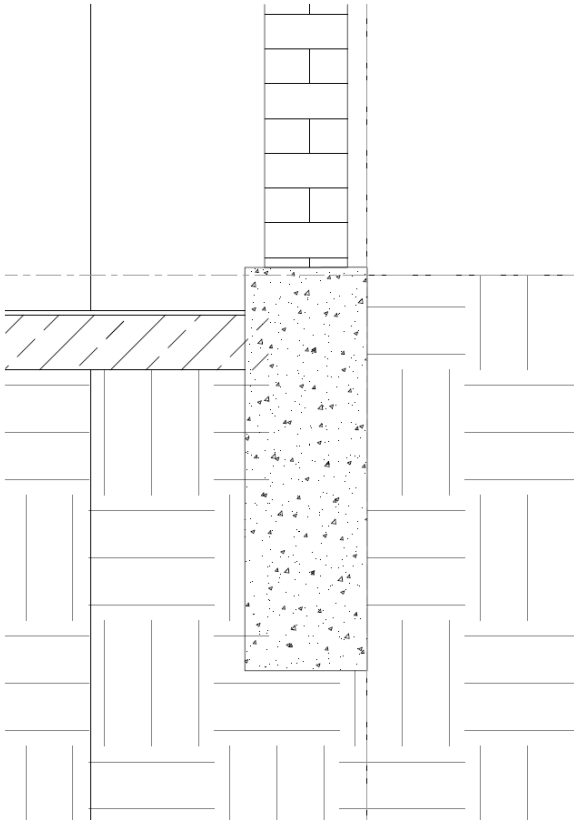


New detail

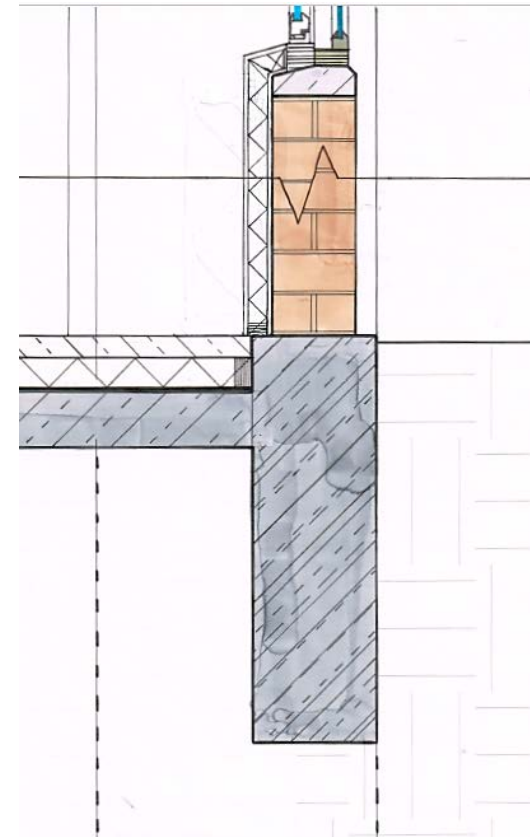
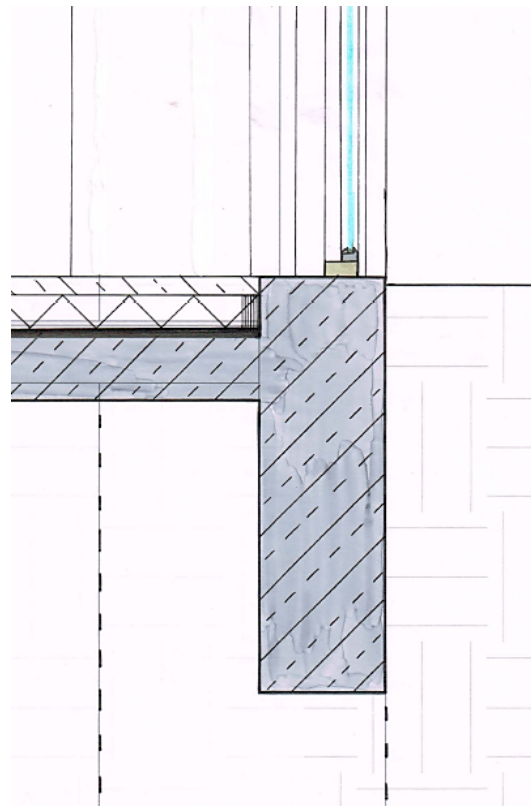


Details

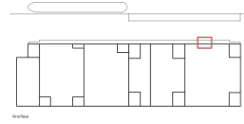
Present detail



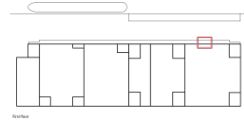
New detail



Repair of the damage



Repair of the damage



Conclusion

- Foto maquette

Thank you for listening



Extra

A series of horizontal lines in teal and light blue colors, extending across the width of the slide.

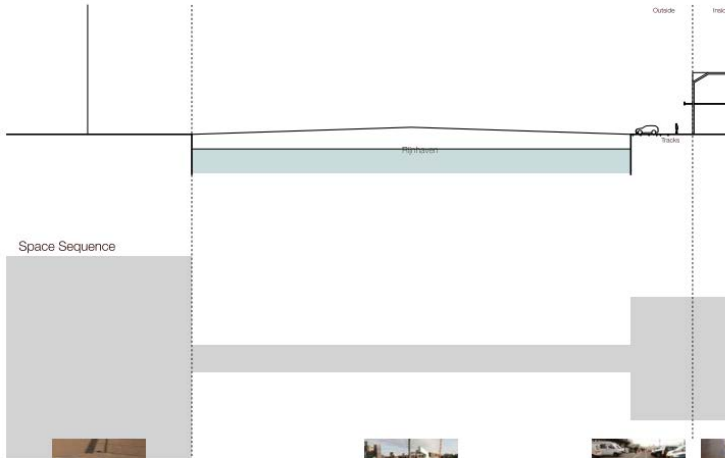
Analyse: Architectural Analyses



Streetscape
Hotel New York

Rijnhaven bridge

Fenixbods 2



Space Sequence

Paving Materials

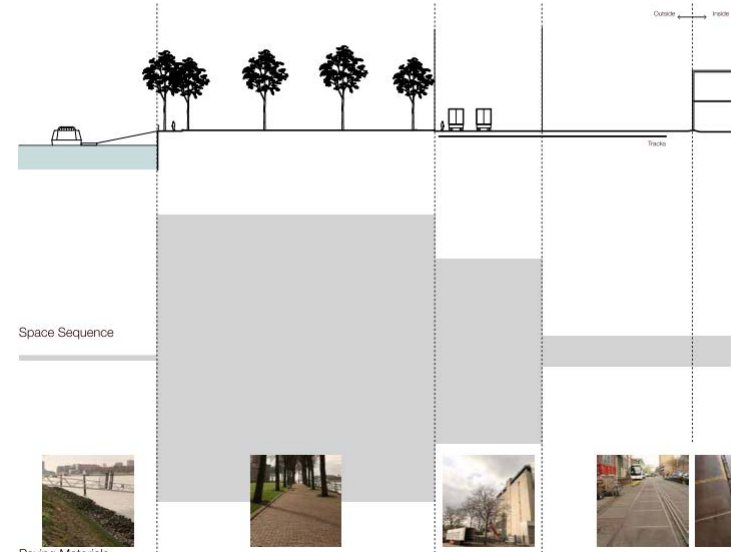


Streetscape
Water Bus

Green Area

Proximi Factory

Fenixbods 2



Space Sequence

Paving Materials



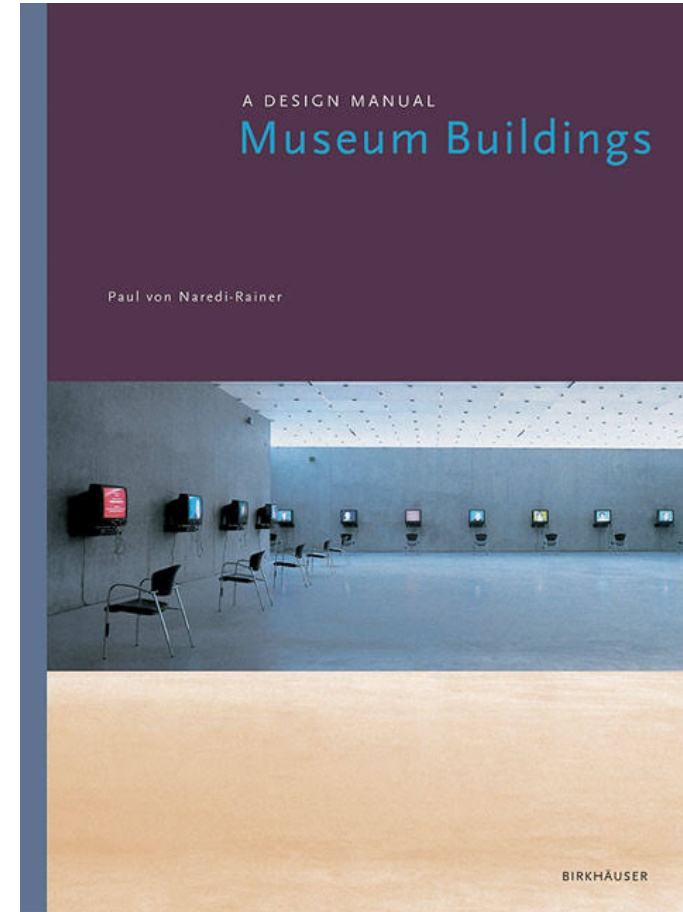
Essence of the building

Connection with the water



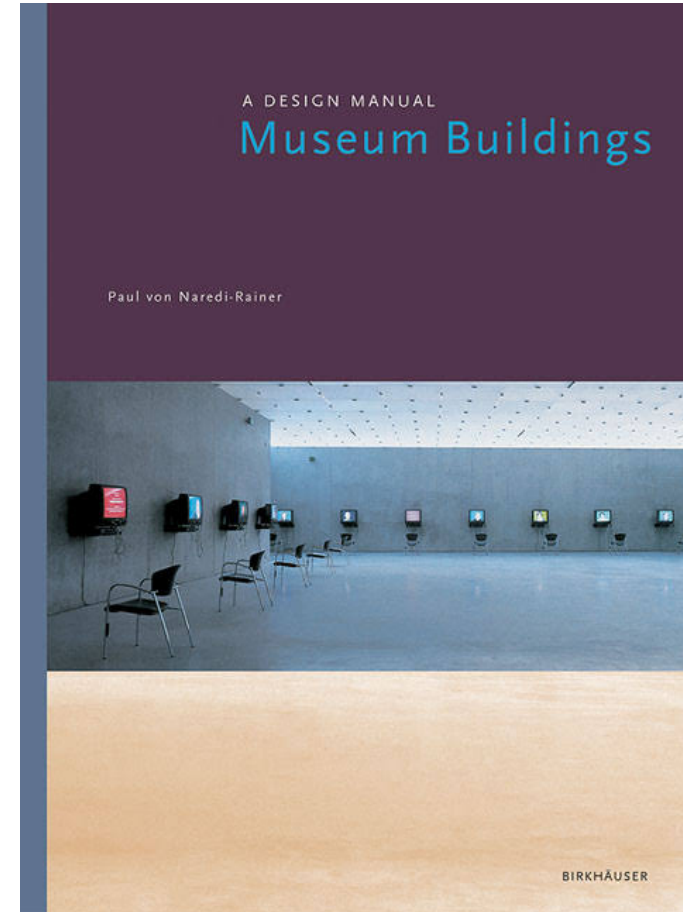
Migration Museum

- Directed sequences of rooms
- Matrix-like arrangement of rooms
- Spatial interpenetration and spatial isolation
- Open plans
- Free-form spaces
- Conversions and extensions of architectural monuments



Migration Museum

- Directed sequences of rooms
(Permanent exhibition)
- Matrix-like arrangement of rooms
- Spatial interpenetration and spatial isolation
- Open plans (Temporary exhibition)
- Free-form spaces
- Conversions and extensions of architectural monuments



Migration Museum

