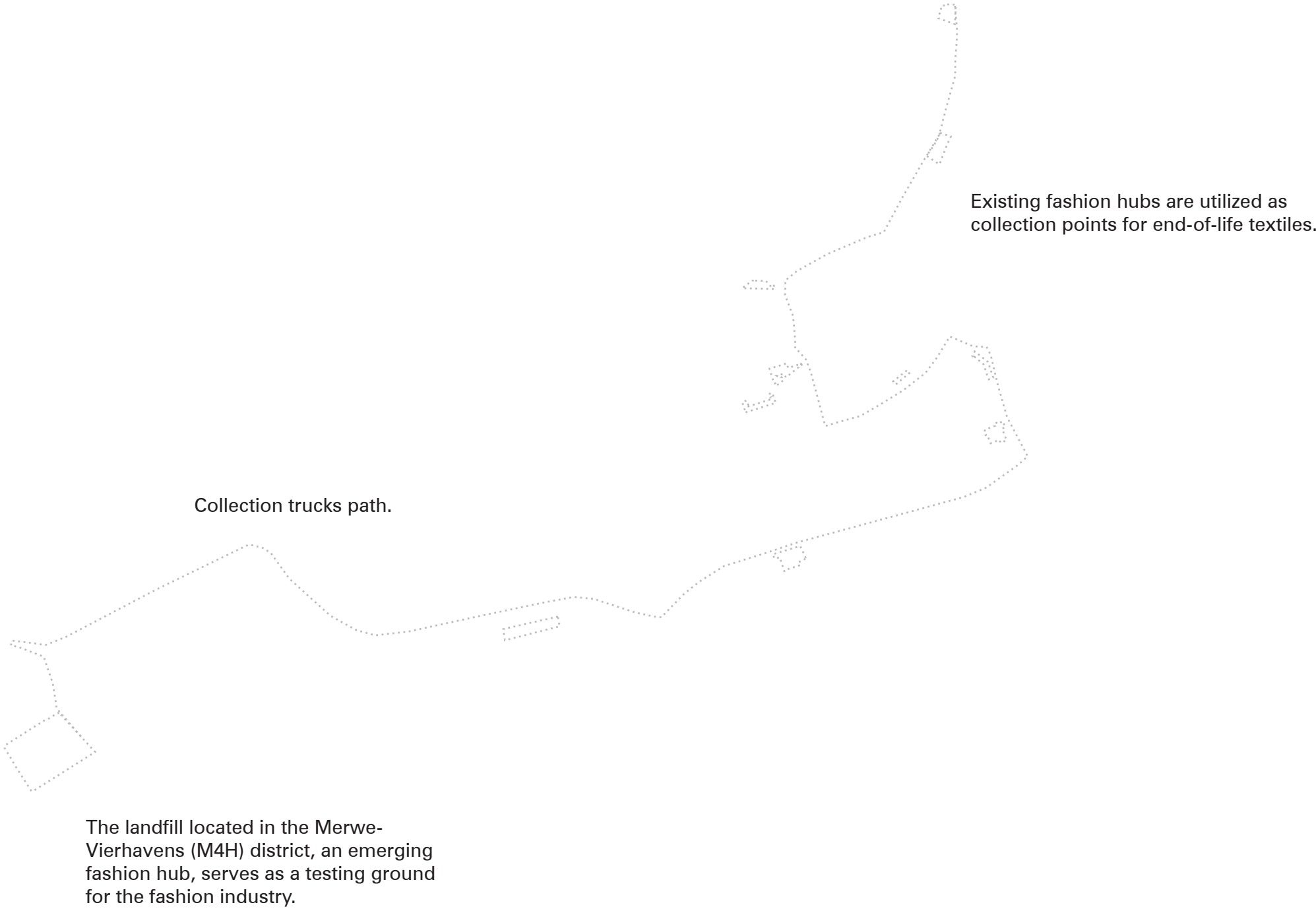


Shelf Life



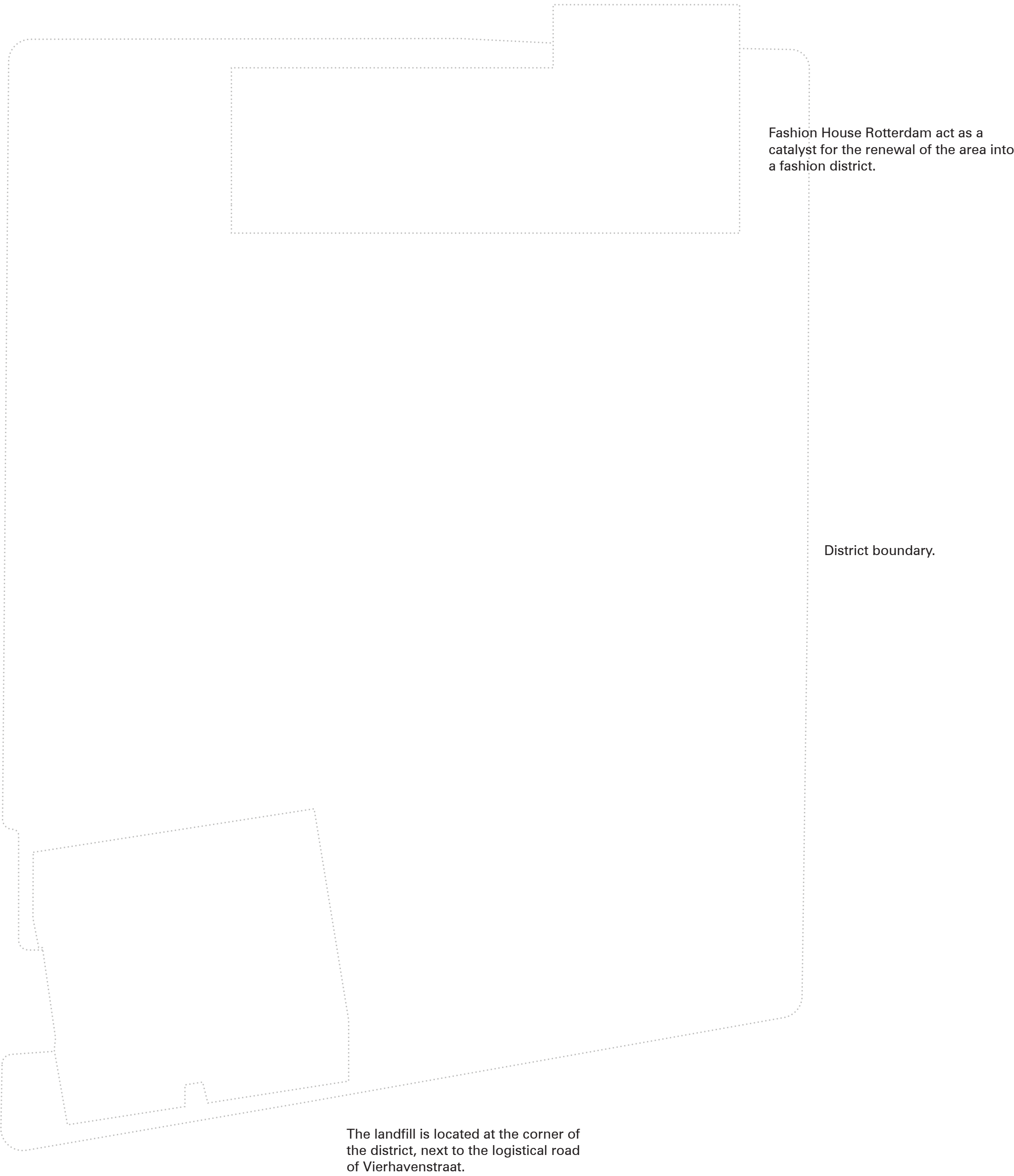


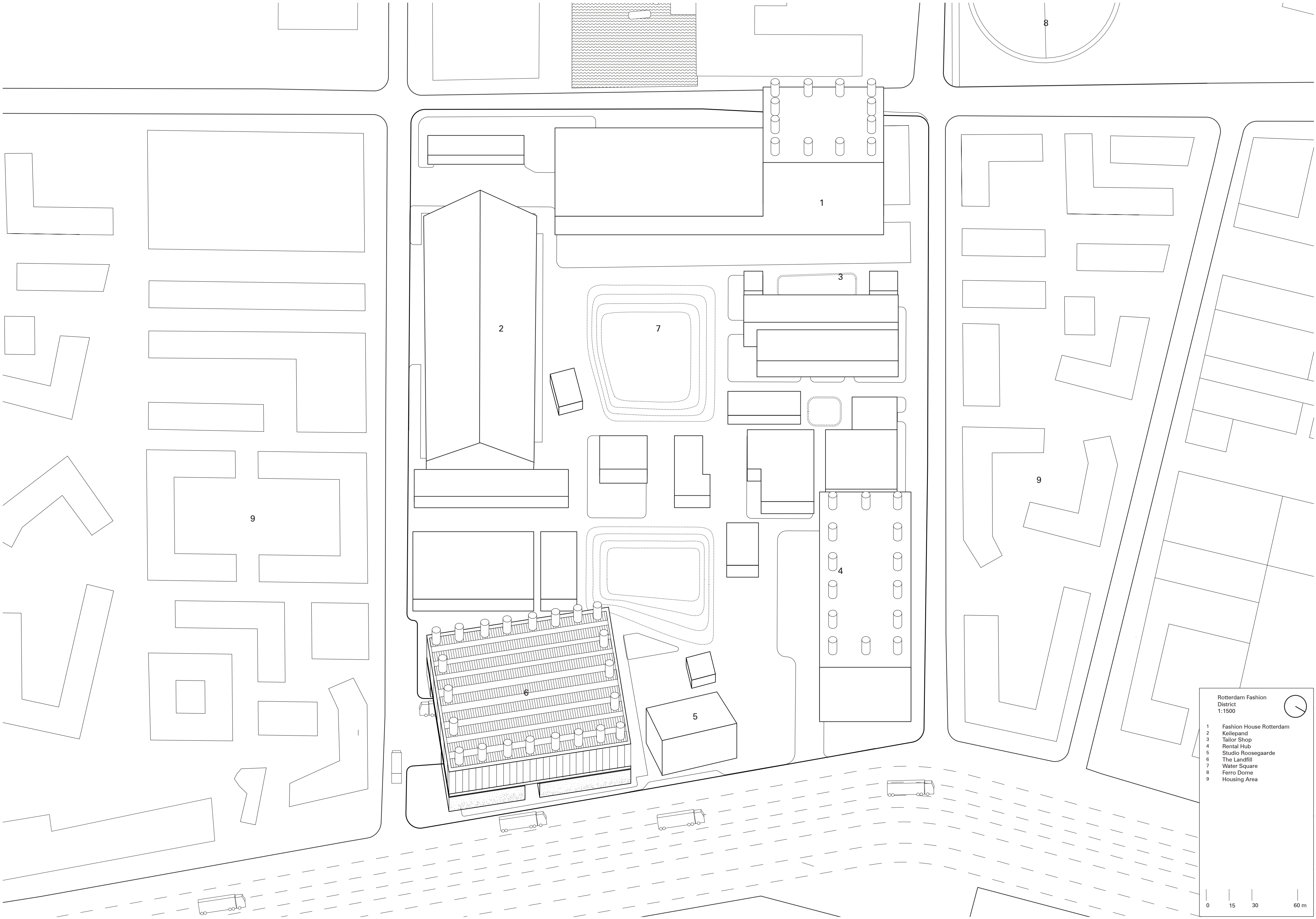
New Material Network
1:10000



- 1 Fashion district
- 2 Nieuwe Maas
- 3 Nieuwe Binnenweg
- 4 Witte de Withstraat
- 5 Hoogstraat
- 6 Pannekoekstraat
- 7 Meent
- 8 Kruiskade
- 9 Coölsingel
- 10 De Hofbogen
- 11 Zaagmolenkade
- 12 Zwaanshals

0 100 200 300 400 m



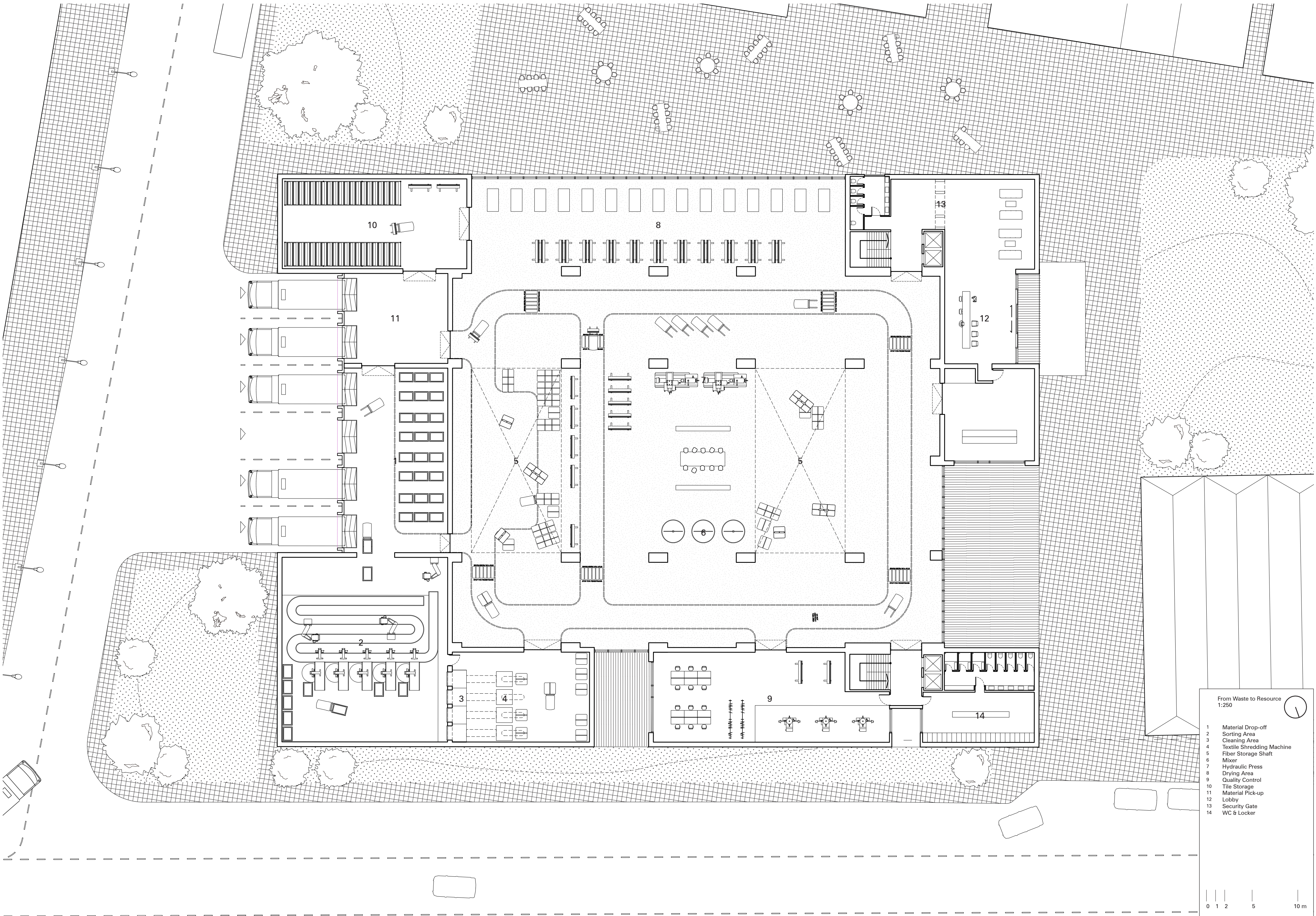


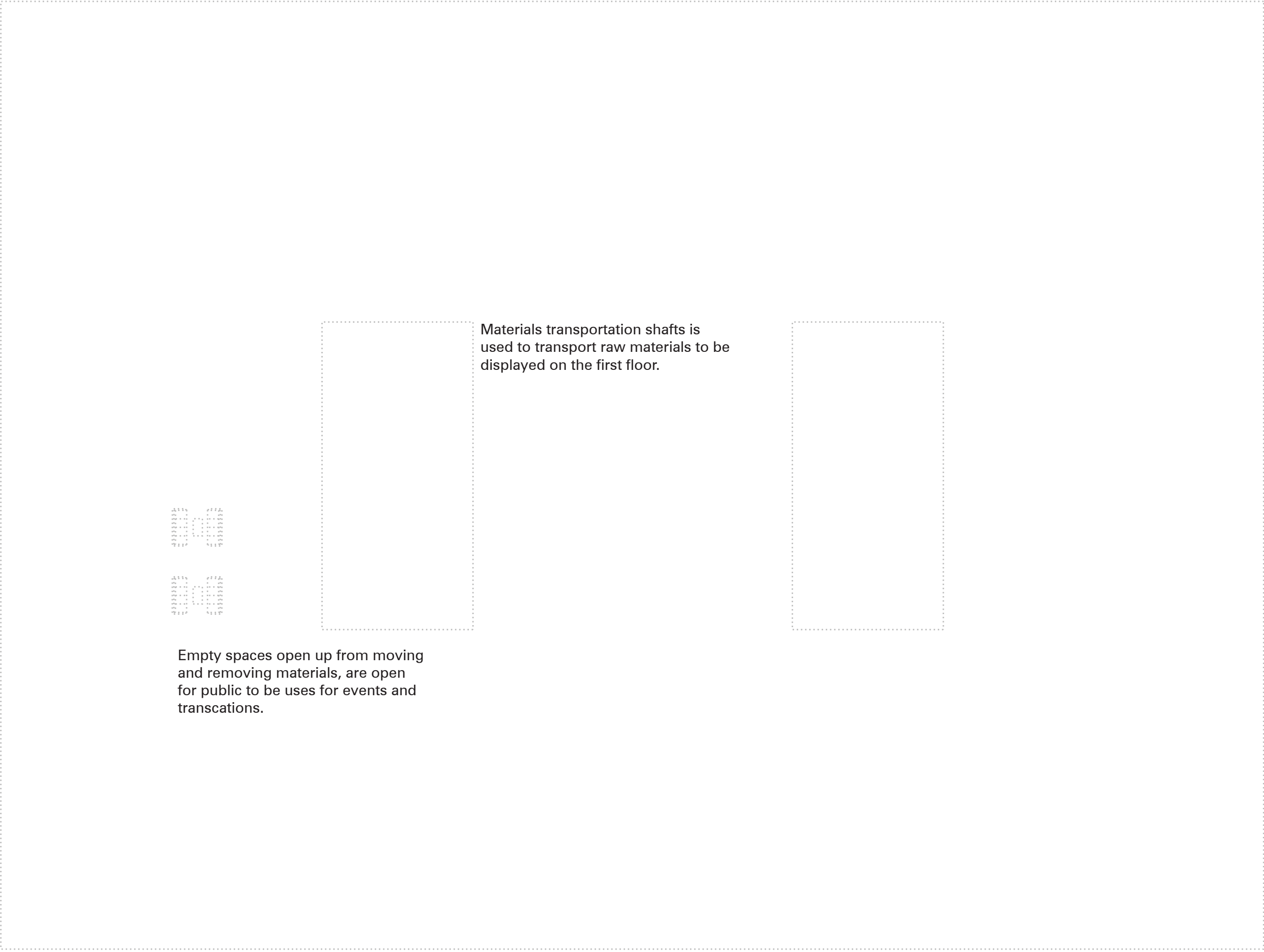
Rotterdam Fashion
District
1:1500

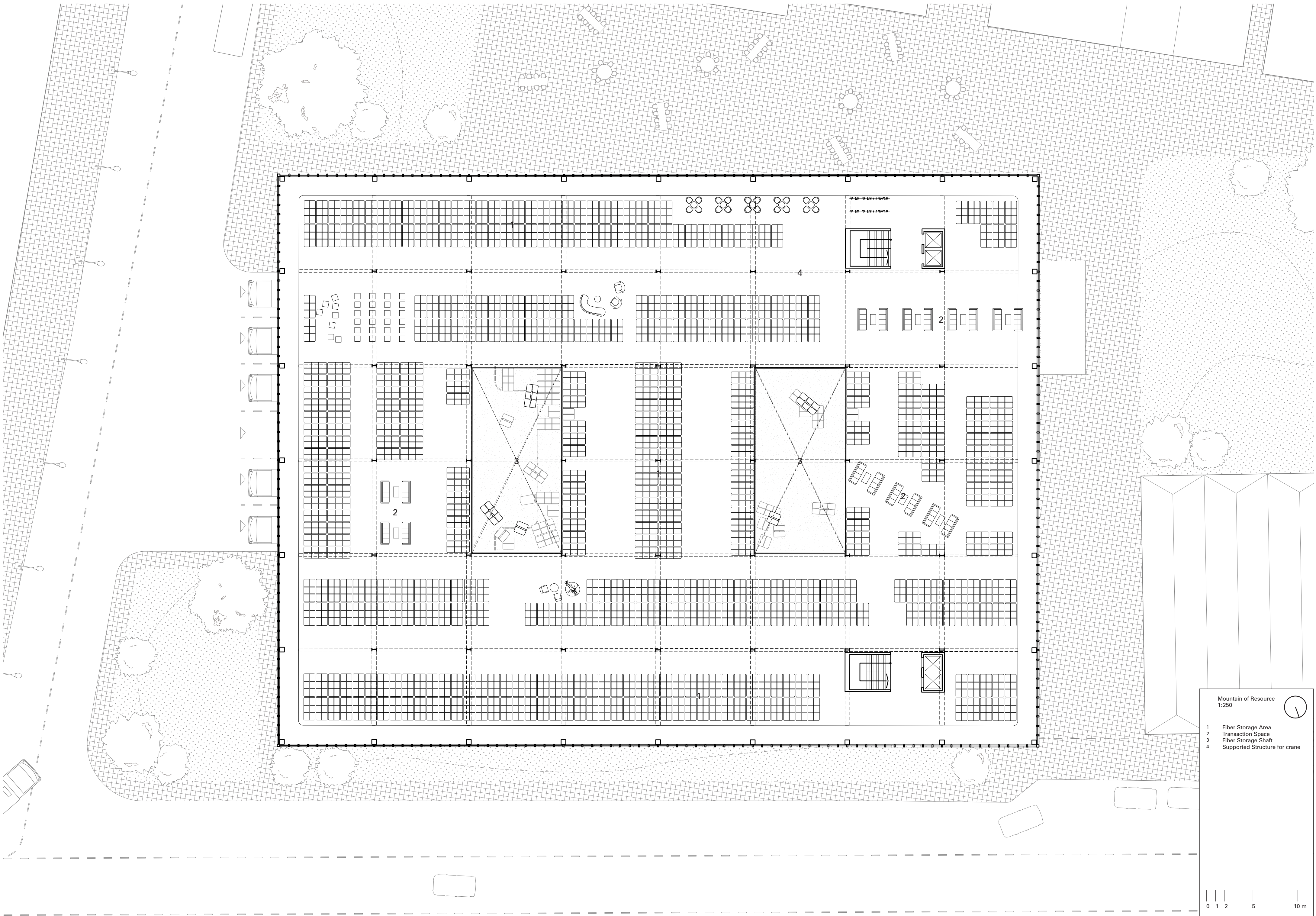
- 1 Fashion House Rotterdam
- 2 Keilepand
- 3 Tailor Shop
- 4 Rental Hub
- 5 Studio Roosegaarde
- 6 The Landfill
- 7 Water Square
- 8 Ferro Dome
- 9 Housing Area

0 15 30 60 m





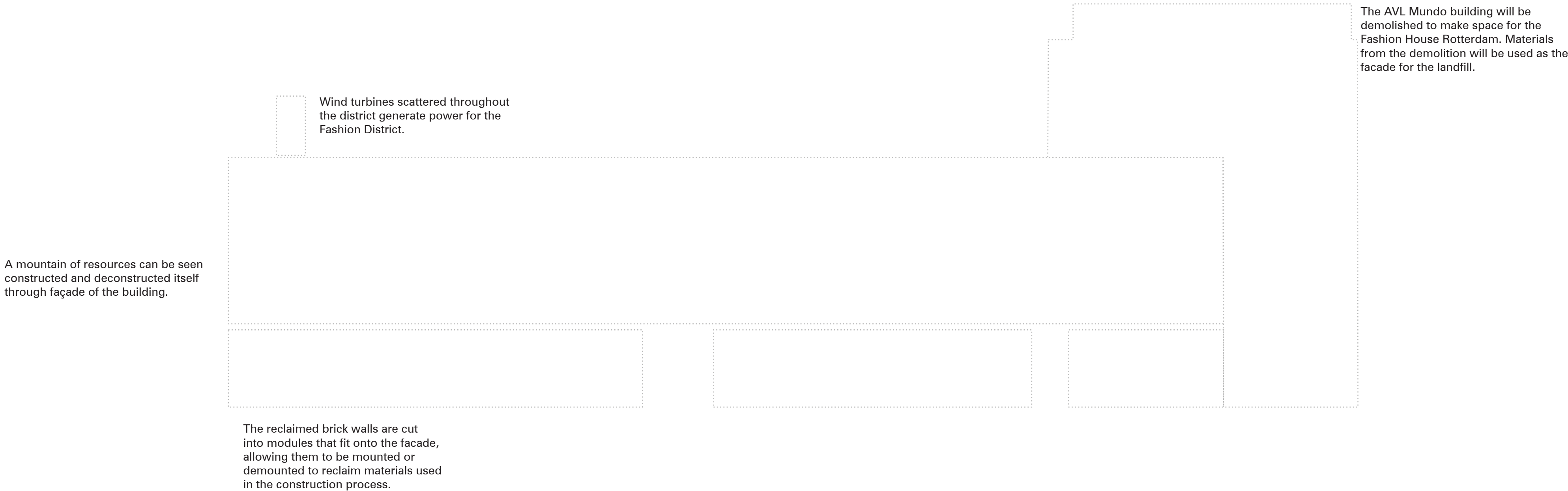


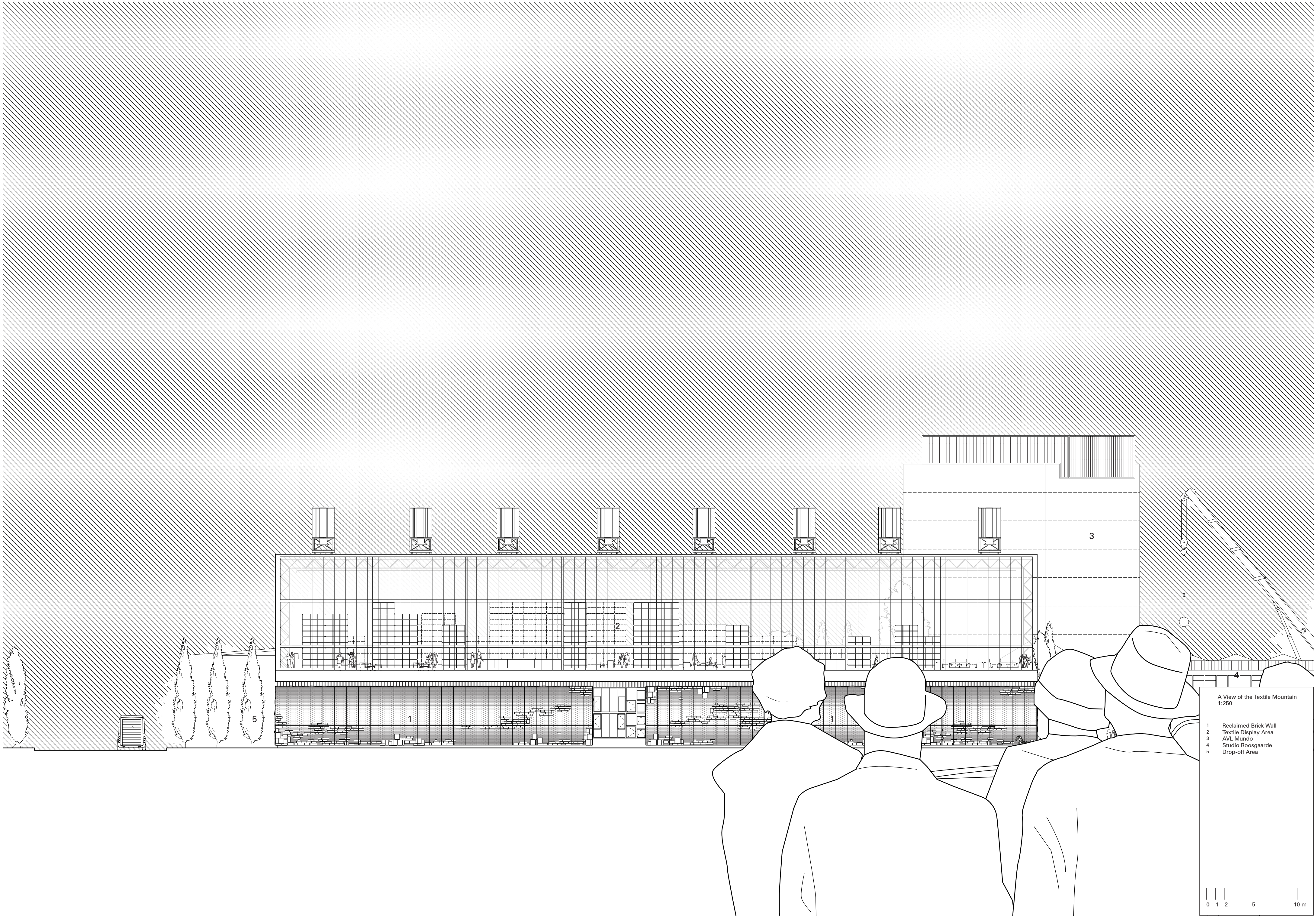


Mountain of Resource
1:250

1 Fiber Storage Area
2 Transaction Space
3 Fiber Storage Shaft
4 Supported Structure for crane

0 1 2 5 10 m



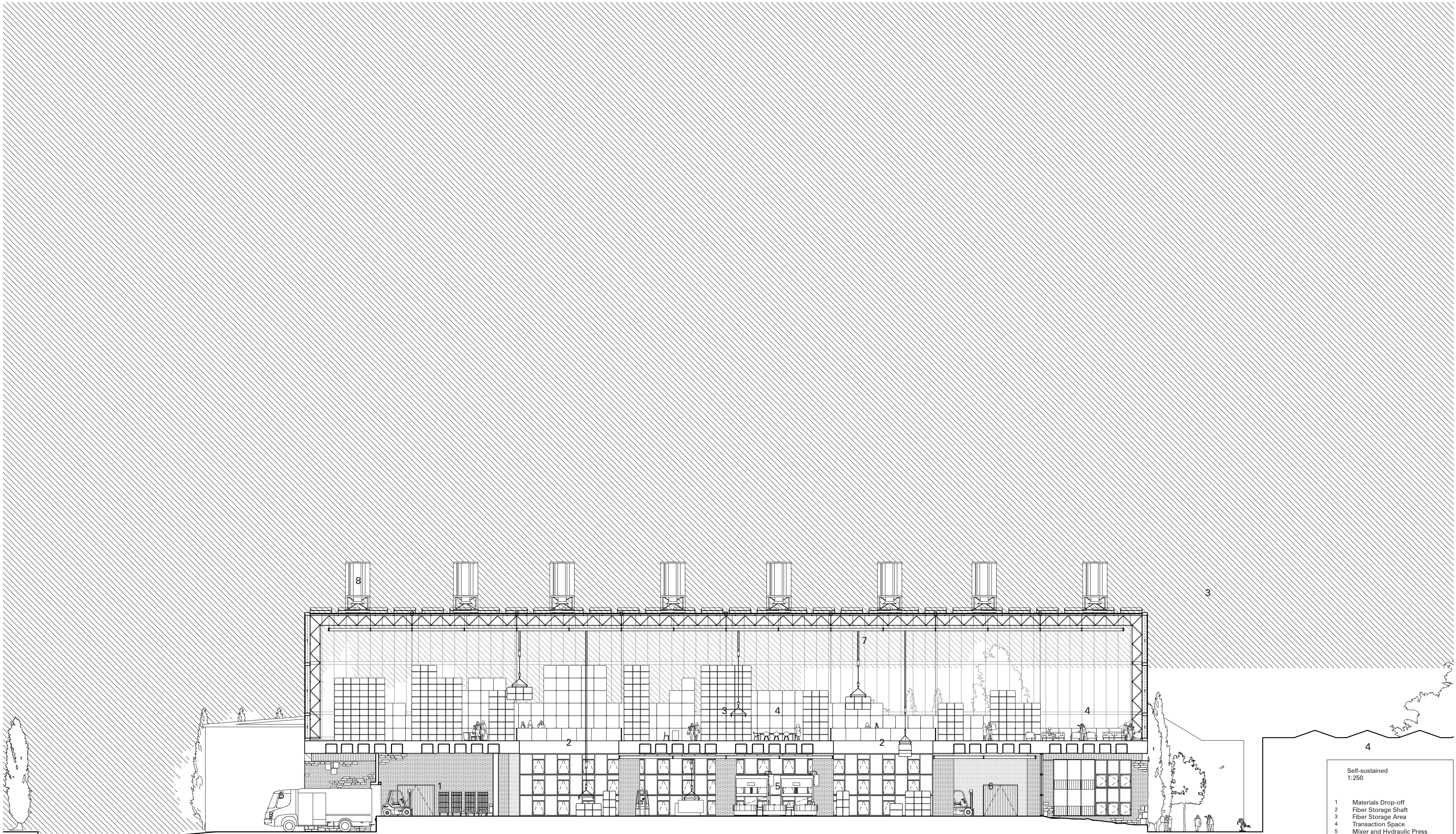


A View of the Textile Mountain
1:250

- 1 Reclaimed Brick Wall
- 2 Textile Display Area
- 3 AVL Mundo
- 4 Studio Roosgaarde
- 5 Drop-off Area

0 1 2 5 10 m



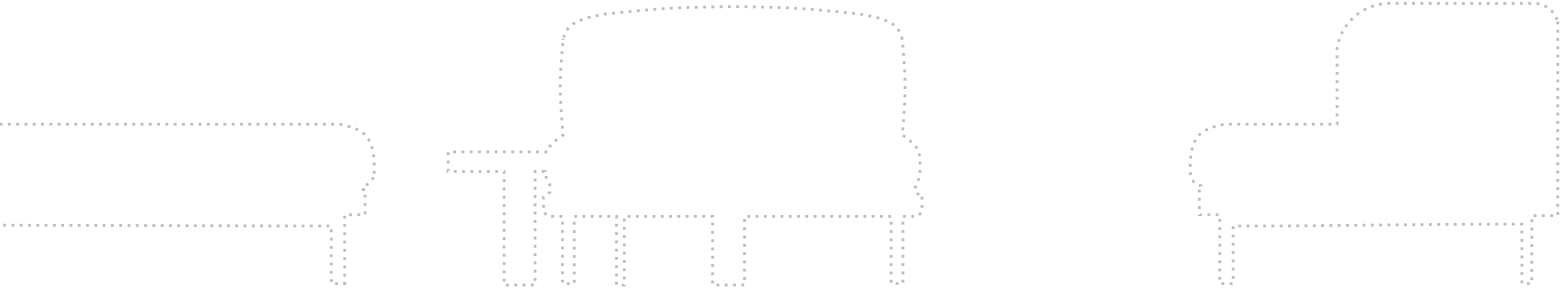


- Self-sustained
1:250
- 1 Materials Drop-off
 - 2 Fiber Storage Shaft
 - 3 Fiber Storage Area
 - 4 Transaction Space
 - 5 Mixer and Hydraulic Press
 - 6 to Lobby
 - 7 Supported Structure for Crane
 - 8 Wind turbine

0 1 2 5 10 m



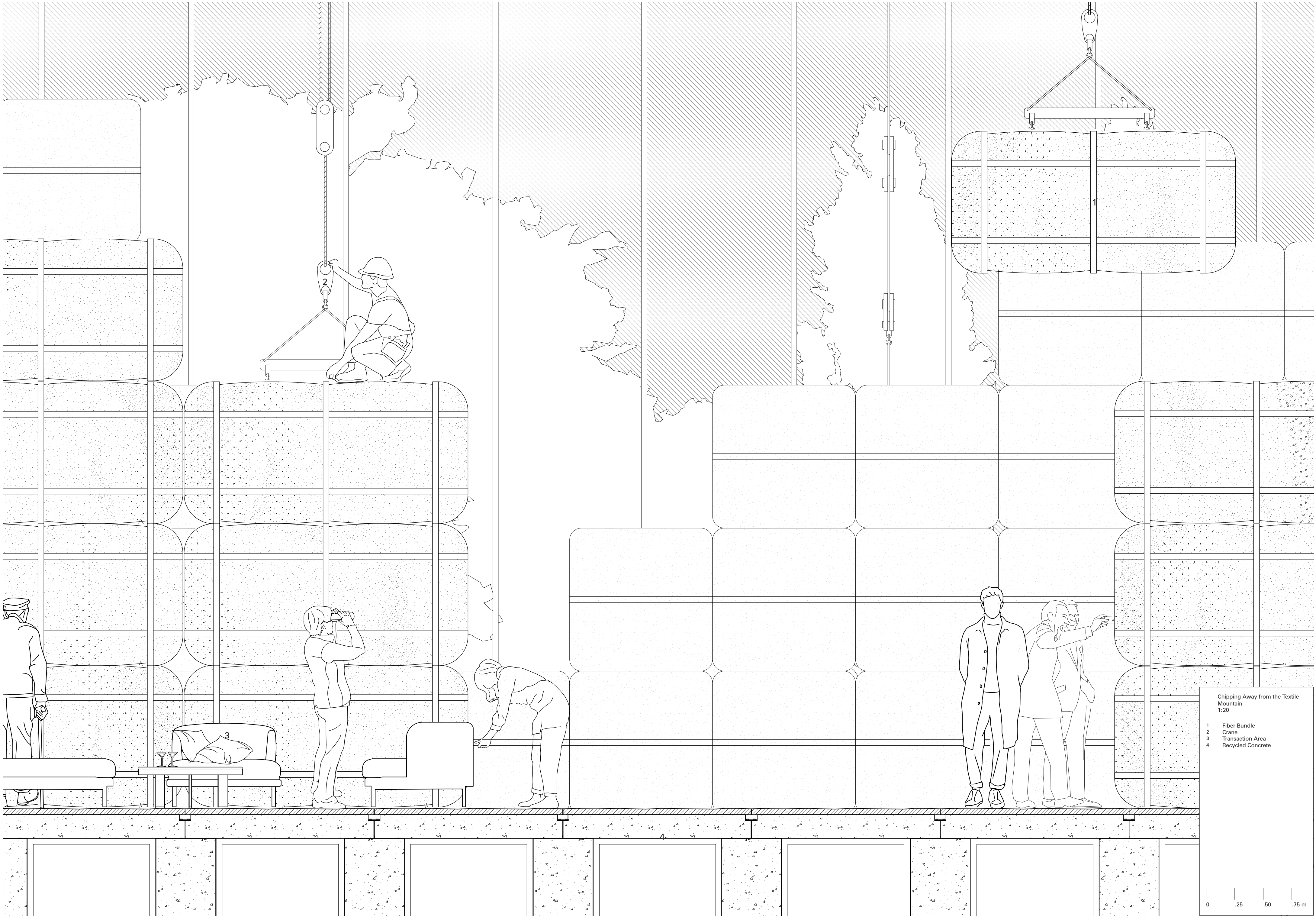
Cranes are used to transport textile bundles in the display area, either to production or storage.



Spaces within the mountain of textiles are utilized as a place of leisure for public events.



People come to select limited pieces of textile that they want to use as construction materials.



Chipping Away from the Textile Mountain
1:20

- 1 Fiber Bundle
- 2 Crane
- 3 Transaction Area
- 4 Recycled Concrete

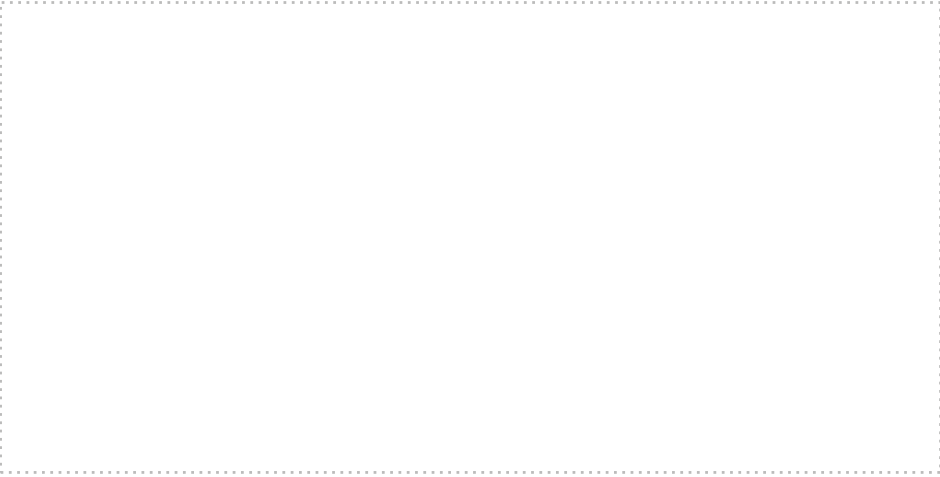
0 .25 .50 .75 m



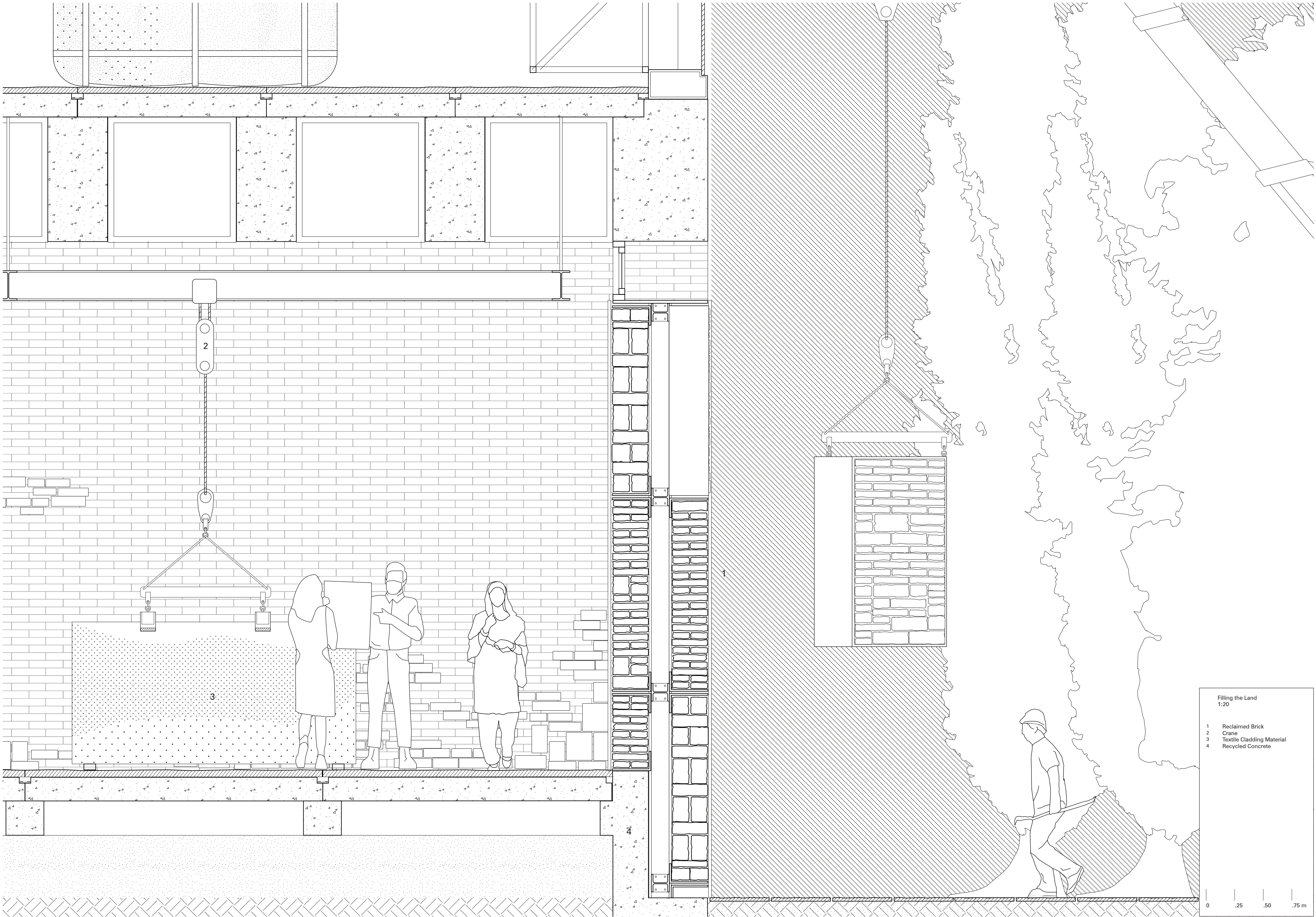
Precast recycled concrete panels connected with demountable connection.



The reclaimed brick walls are cut into modules that fit onto the facade, allowing them to be mounted or demounted to reclaim materials used in the construction process.



Certified by “Clothes the Loop”, cladding materials made from end-of-life textiles have good acoustic properties and distinct patterns coming from the textiles themselves.



Filling the Land
1:20

- 1 Reclaimed Brick
- 2 Crane
- 3 Textile Cladding Material
- 4 Recycled Concrete

0 .25 .50 .75 m