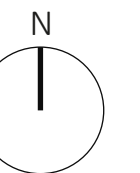
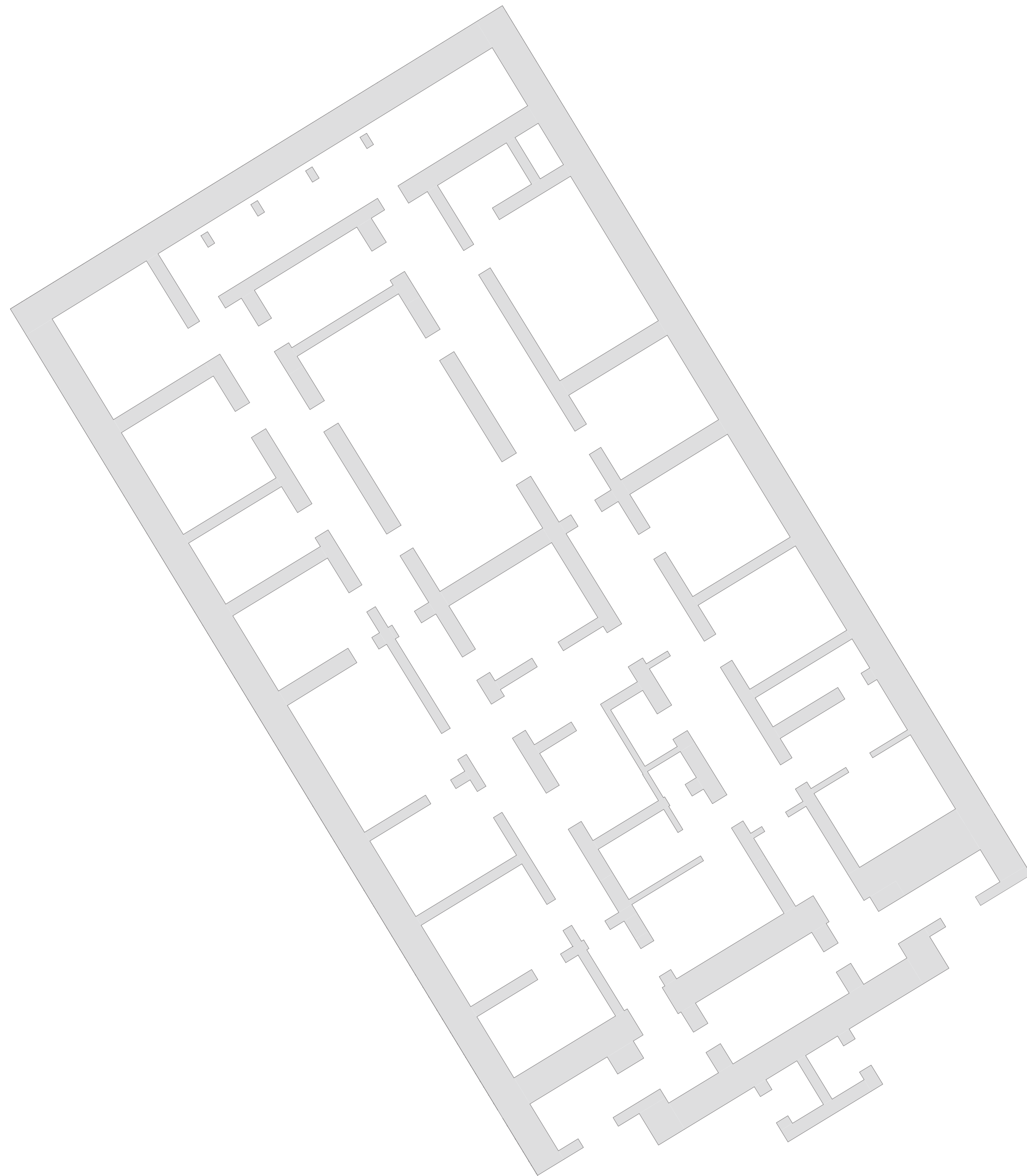
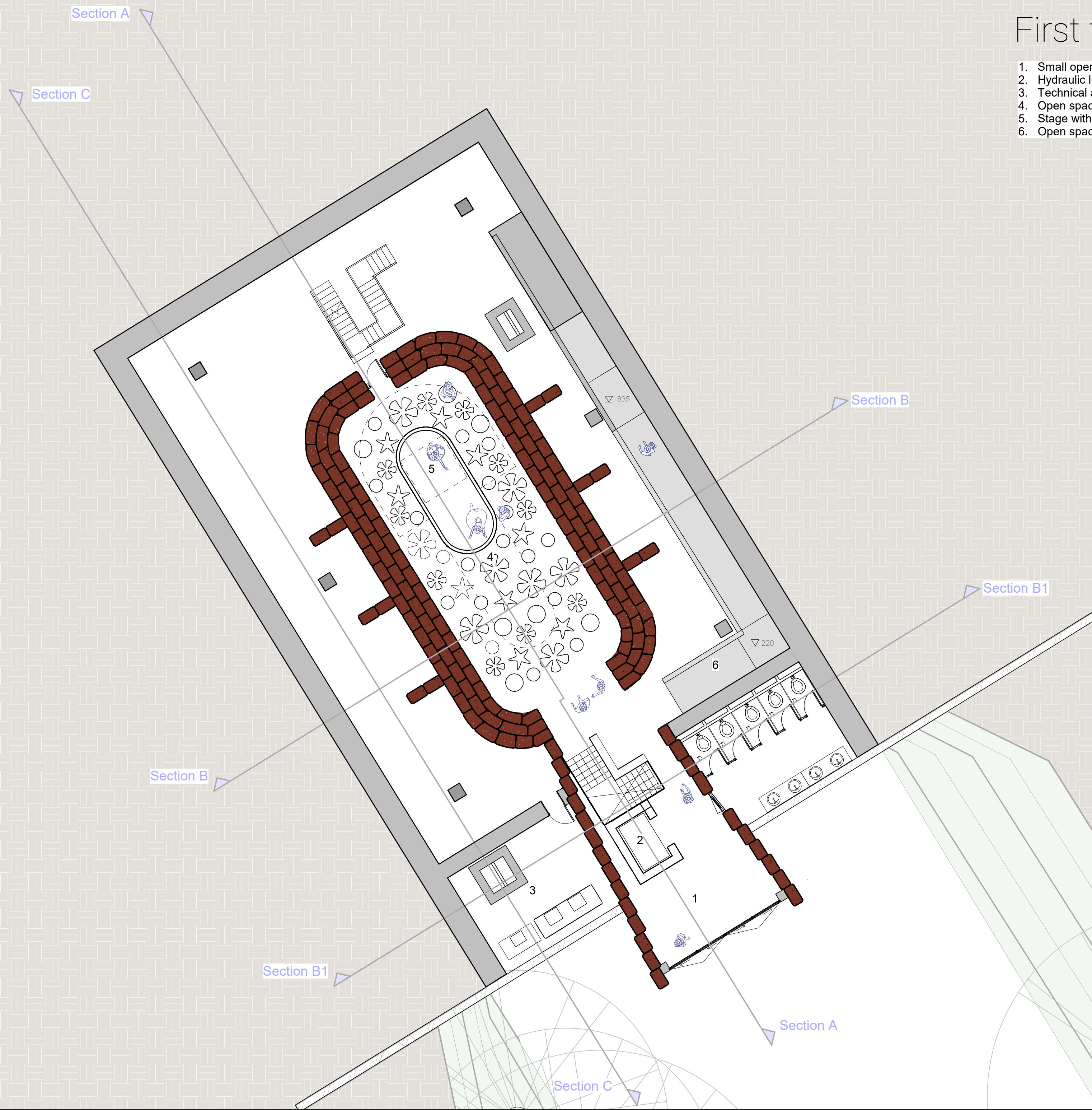


# Excisting ground floor



# First floor

1. Small open space could be used as a stage when folding wall is open
2. Hydraulic lift and playfull stairs
3. Technical area, air handling unit and heat exchanger, solar and daylight chimney
4. Open space where performances can take place
5. Stage with hydraulic lift
6. Open space where the ramp goes around the sculpture to the outside

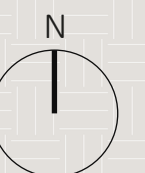


Scale 1:100



# Ground floor

1. Entrance
2. Exhibition art space of the fortification period
3. Hearing the stories of the Swedish soldiers who held the line at Sköne Bastion
4. Small cinema
5. Touching and smelling
6. Workshop space
7. Storage
8. Lockers
9. Hearing the stories of the living tree's of the Sköne Bastion
10. Small cinema
11. Touching and smelling
12. Exhibition art space of the non-human actors that live at Sköne Bastion
13. Workshop space
14. Backstage, dressing room
15. Hydraulic lift
16. Heat pump
17. Daylight and solar chimney



Scale 1:100



Section A





Section B





Facade view



Section A

1

2

3

4

5

6

7

8

Skane Punker

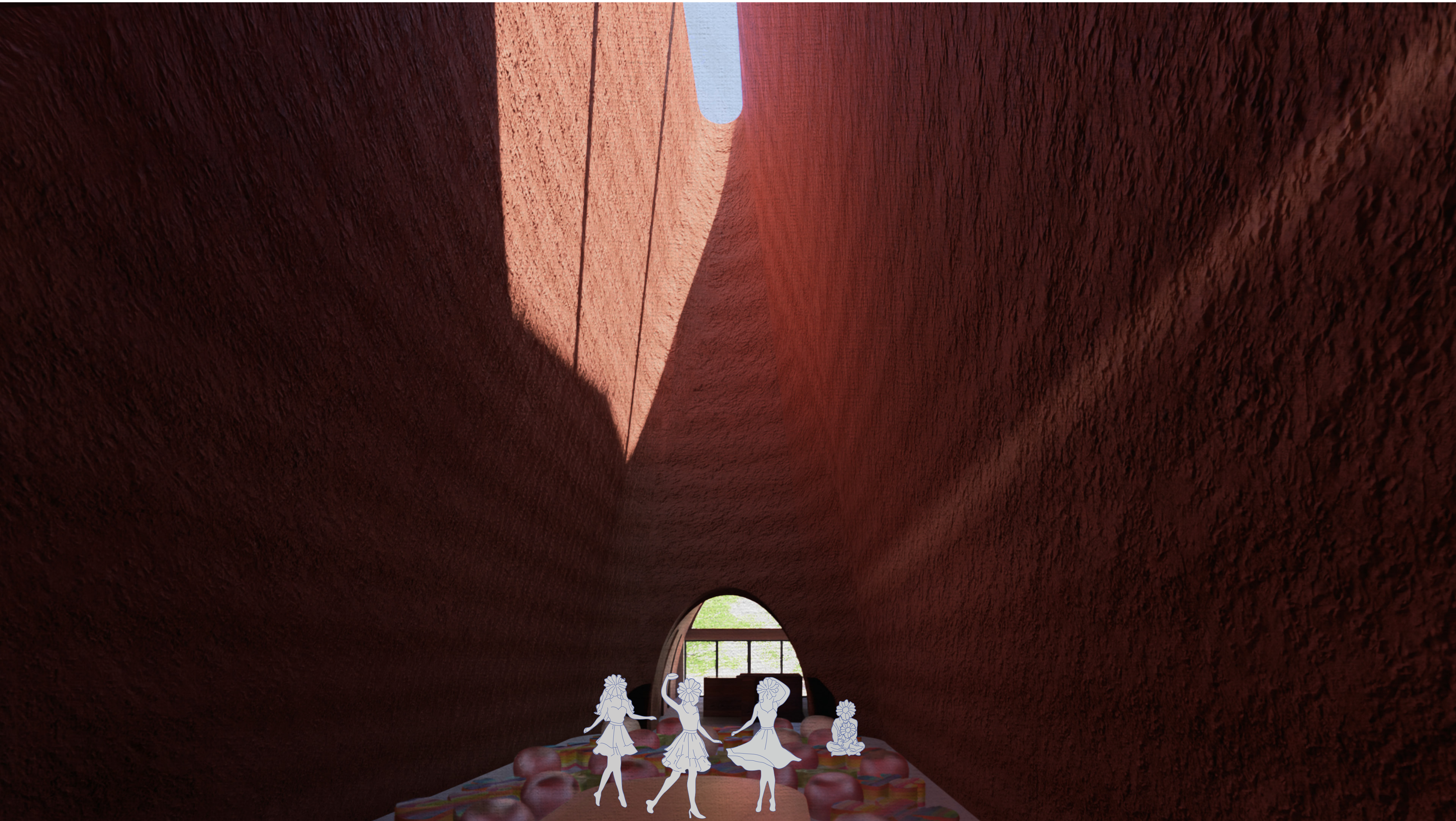
Section A

Scale 1:50

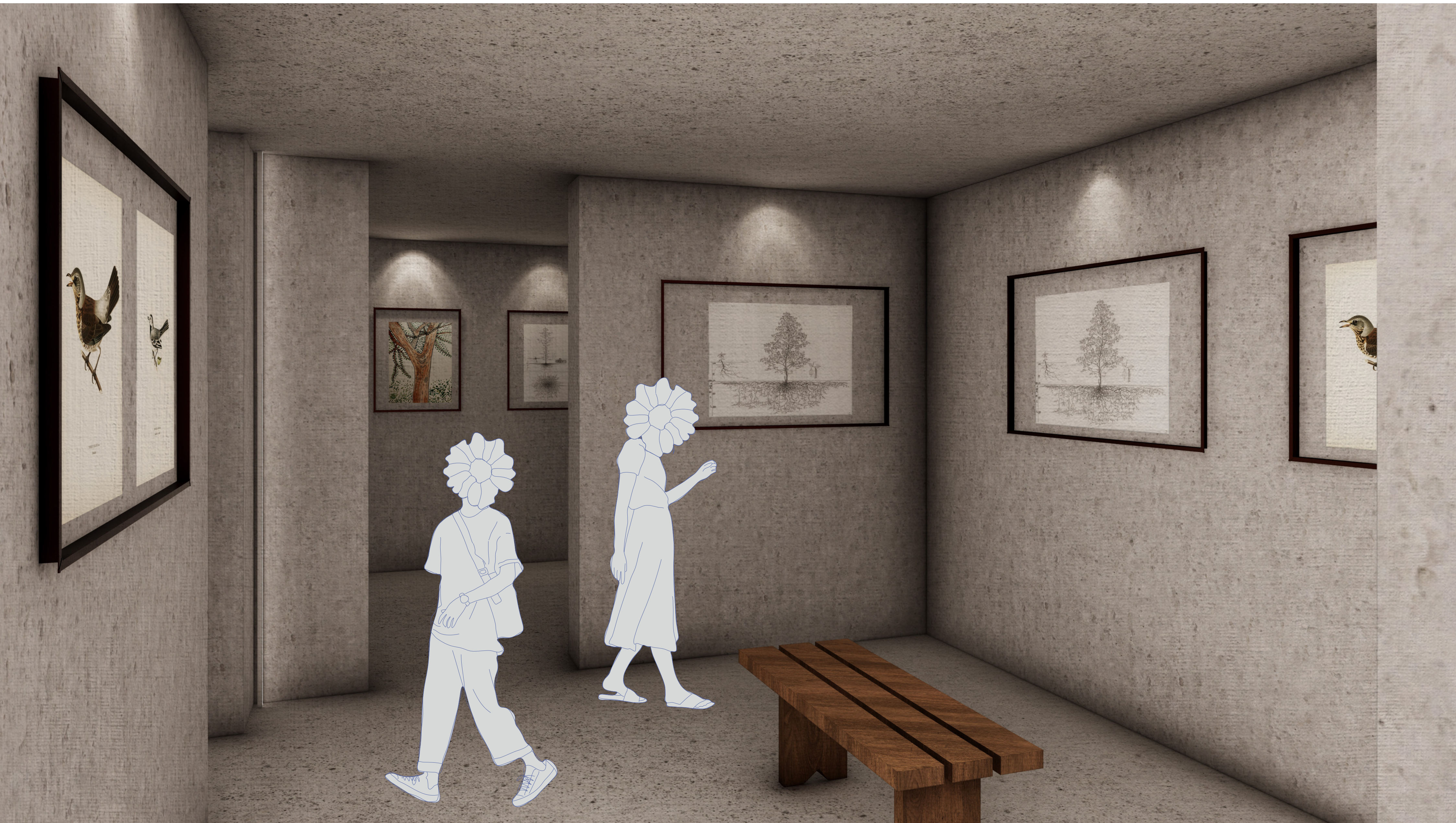




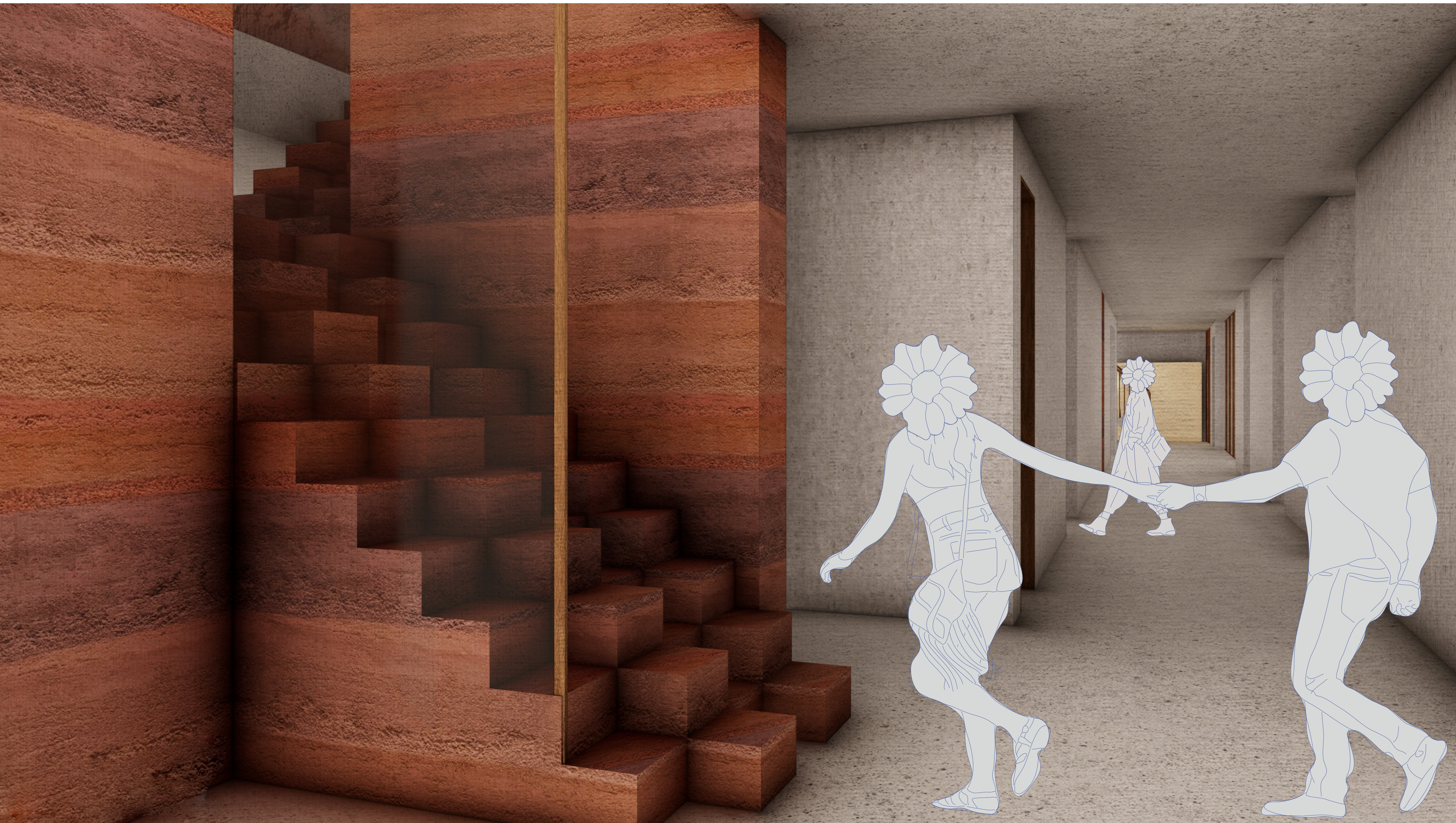








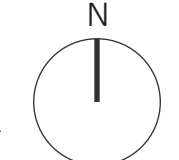








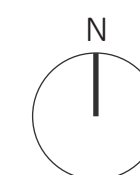
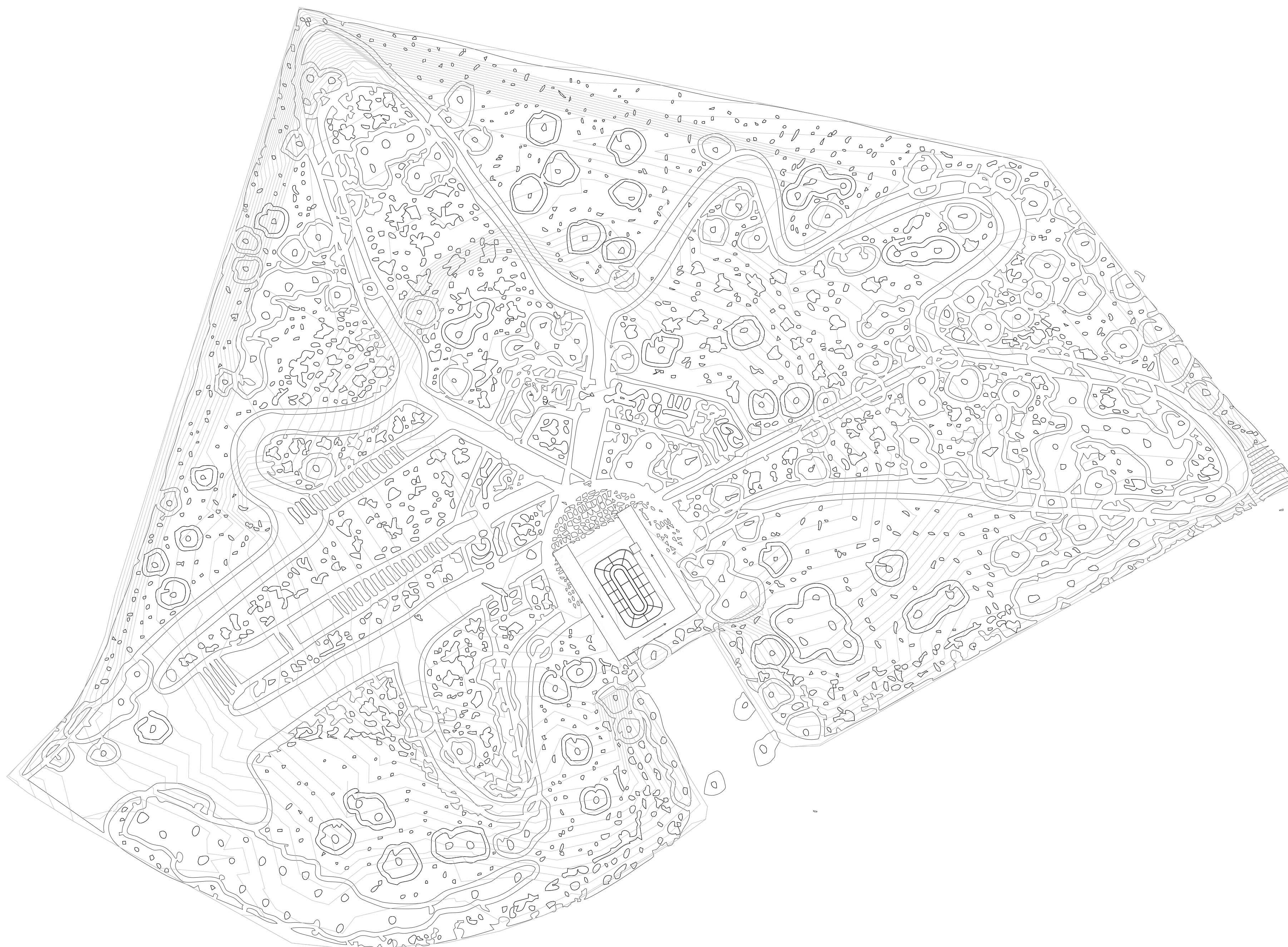




Scale 1:1000  
Situation

1:1000

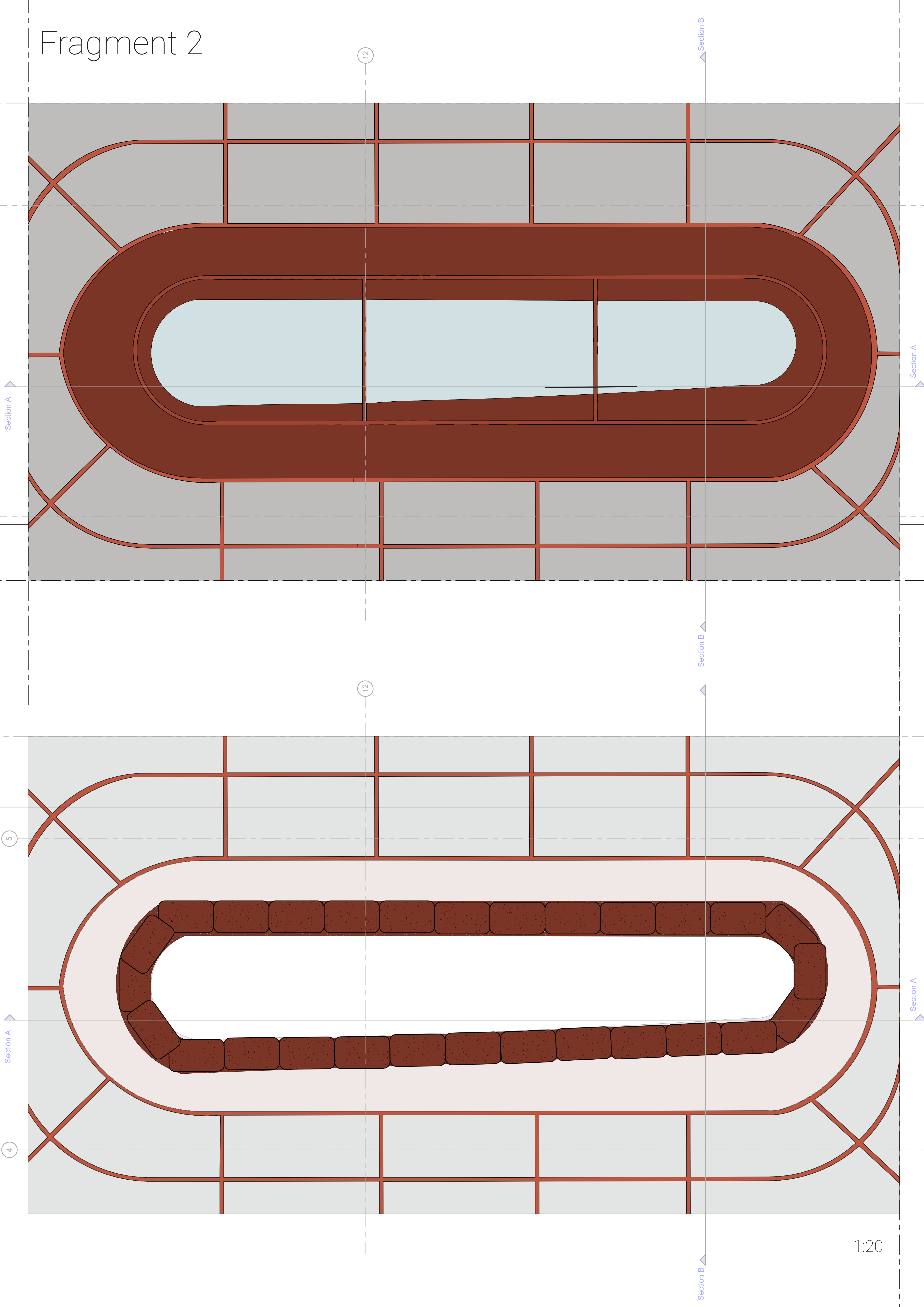




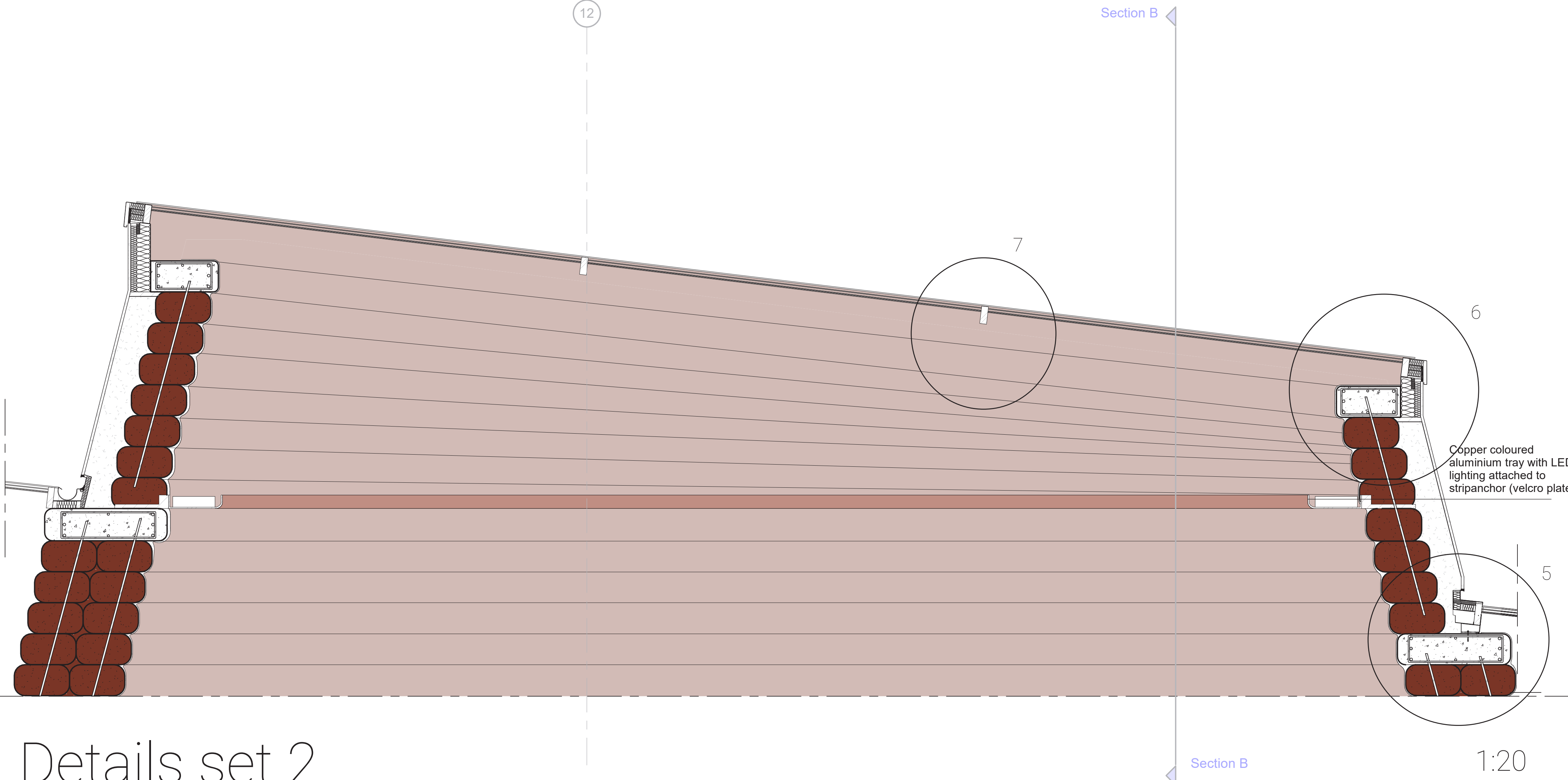
Scale 1:500



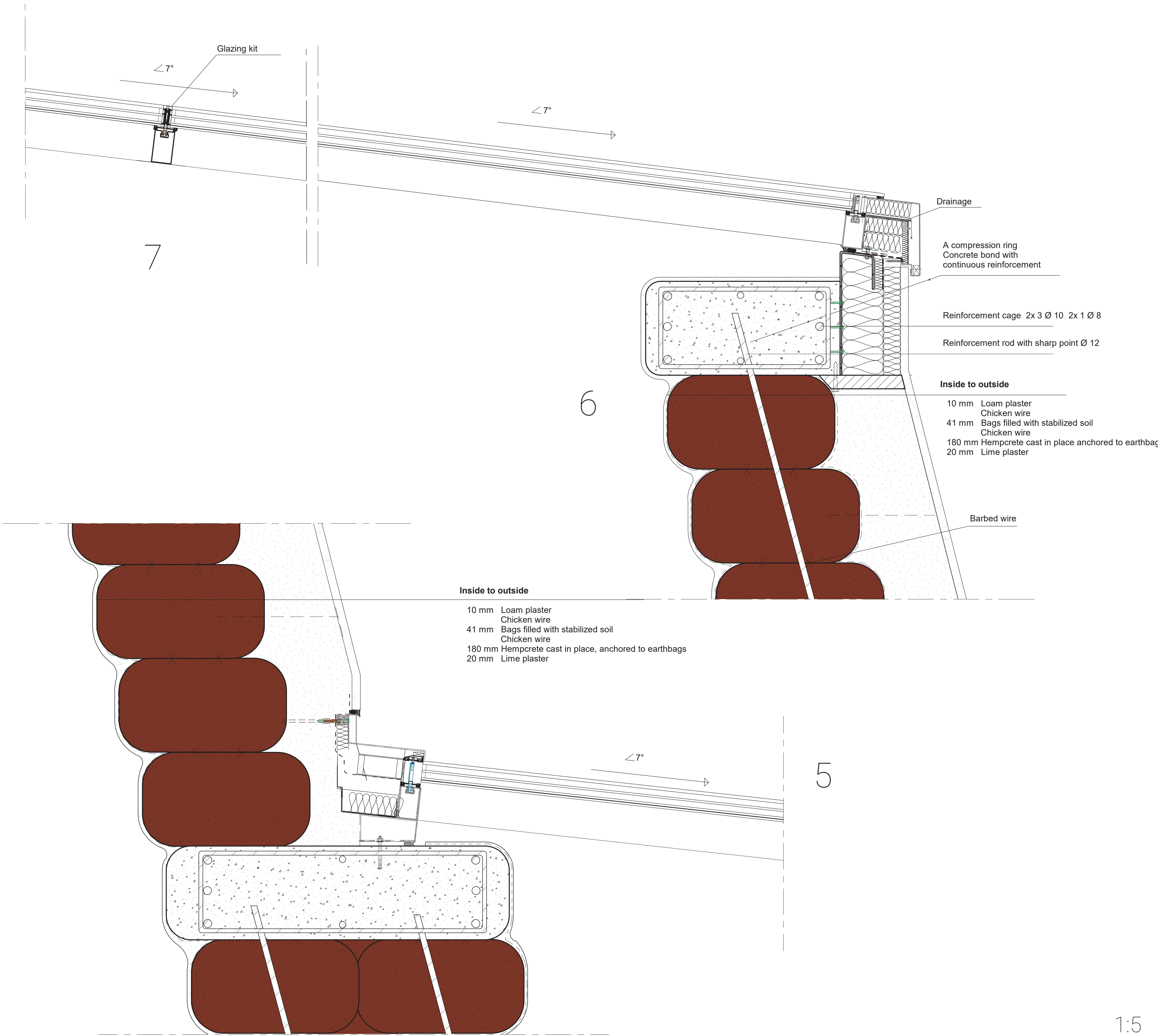
Fragment 2





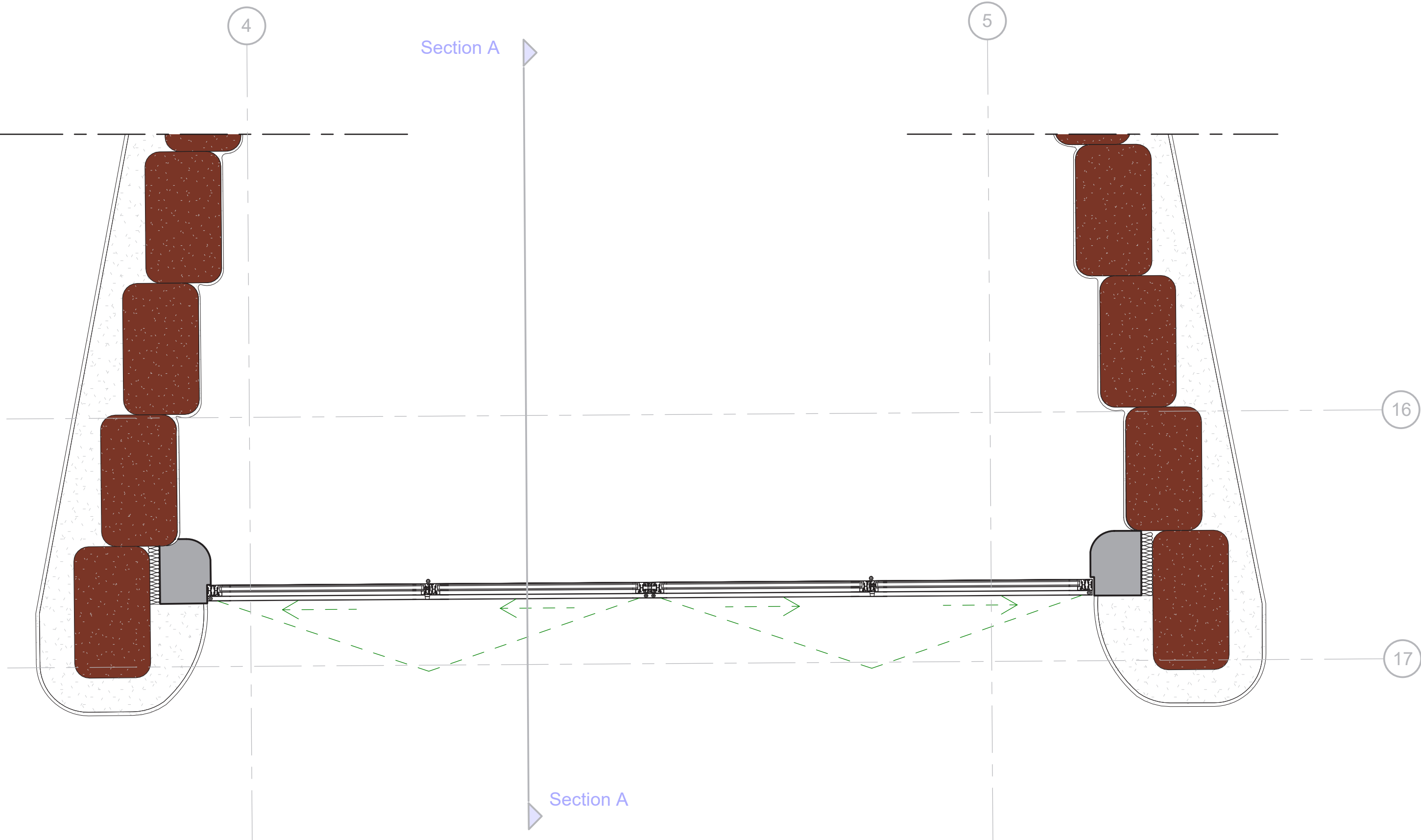
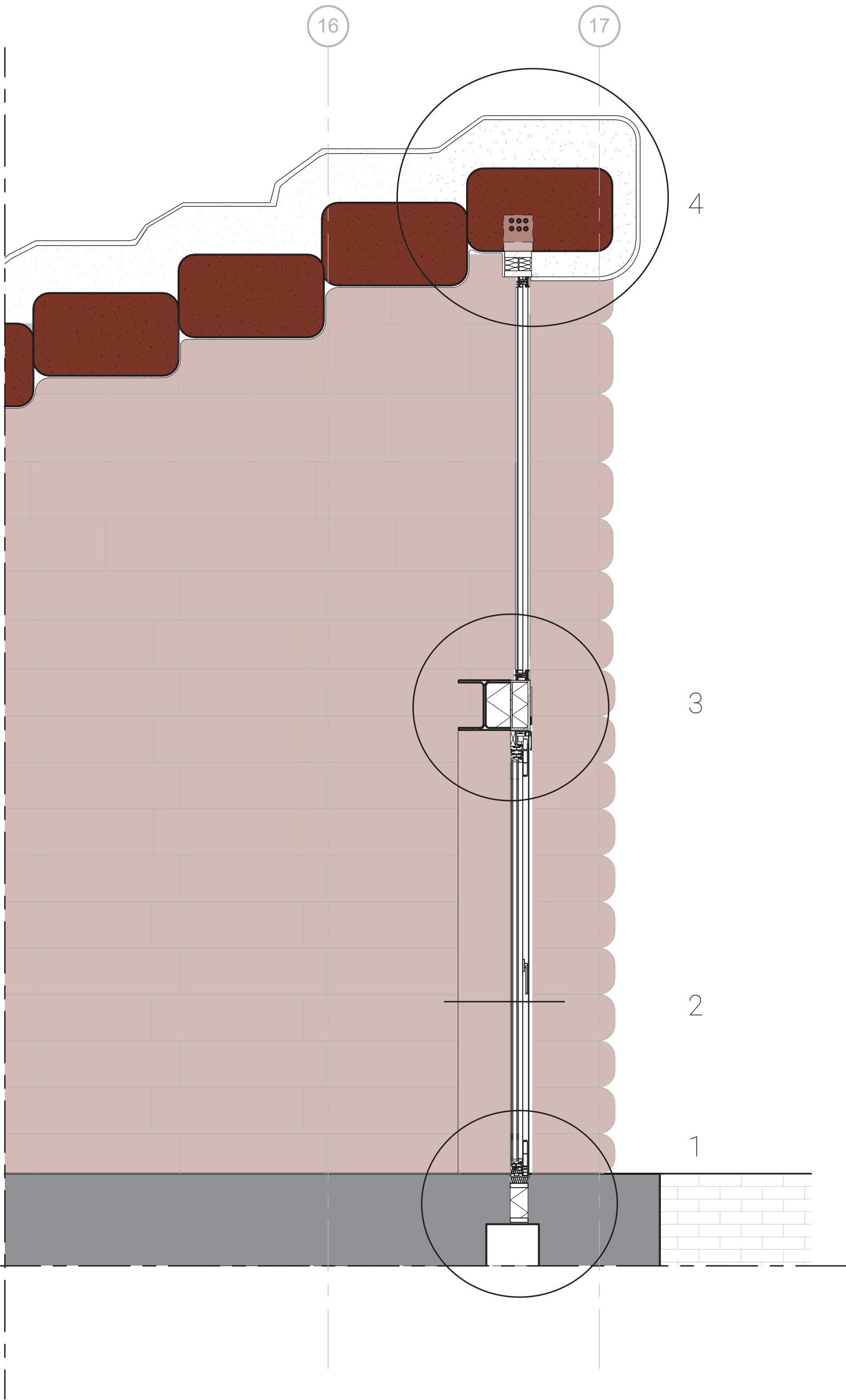
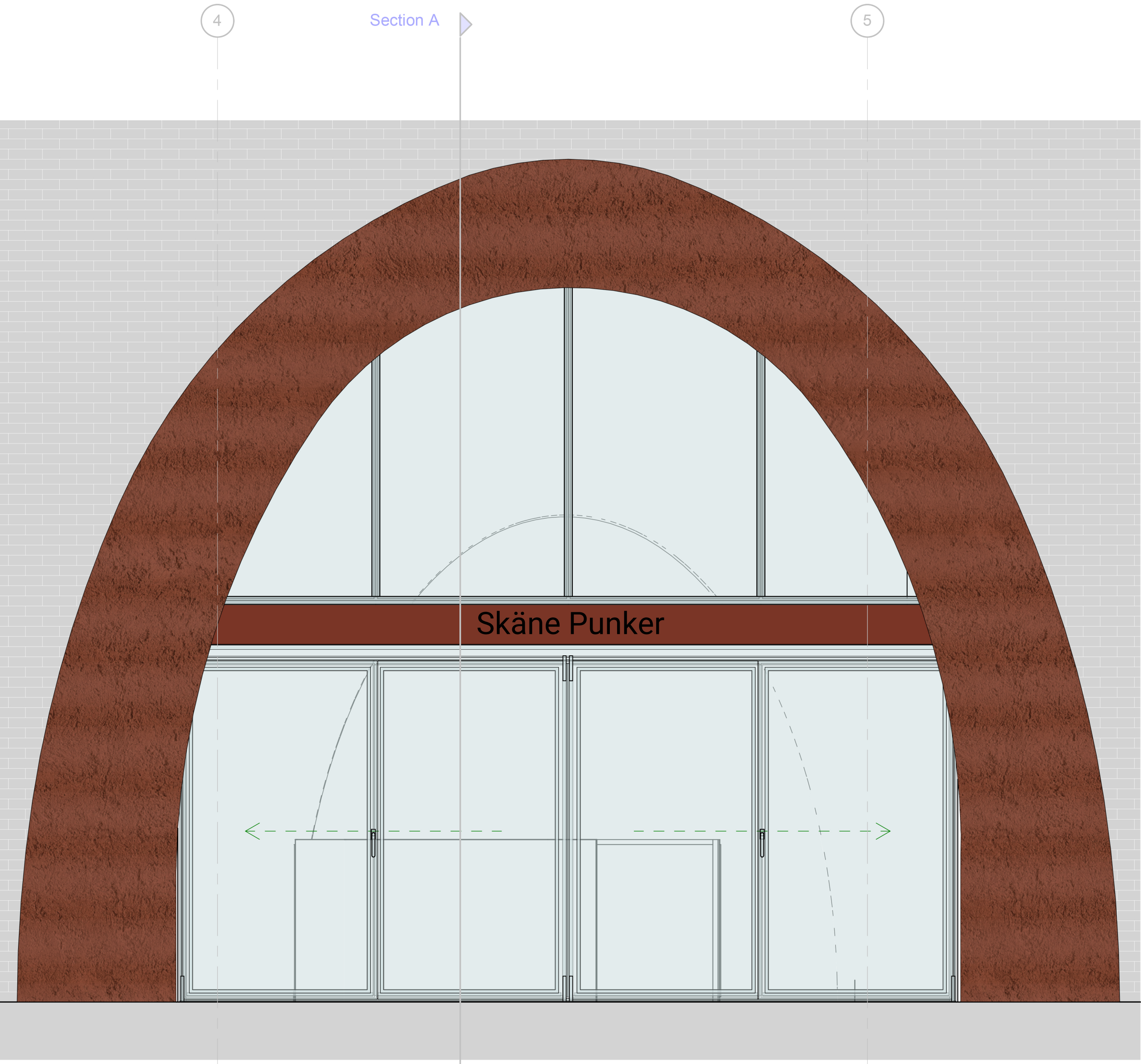


Details set 2

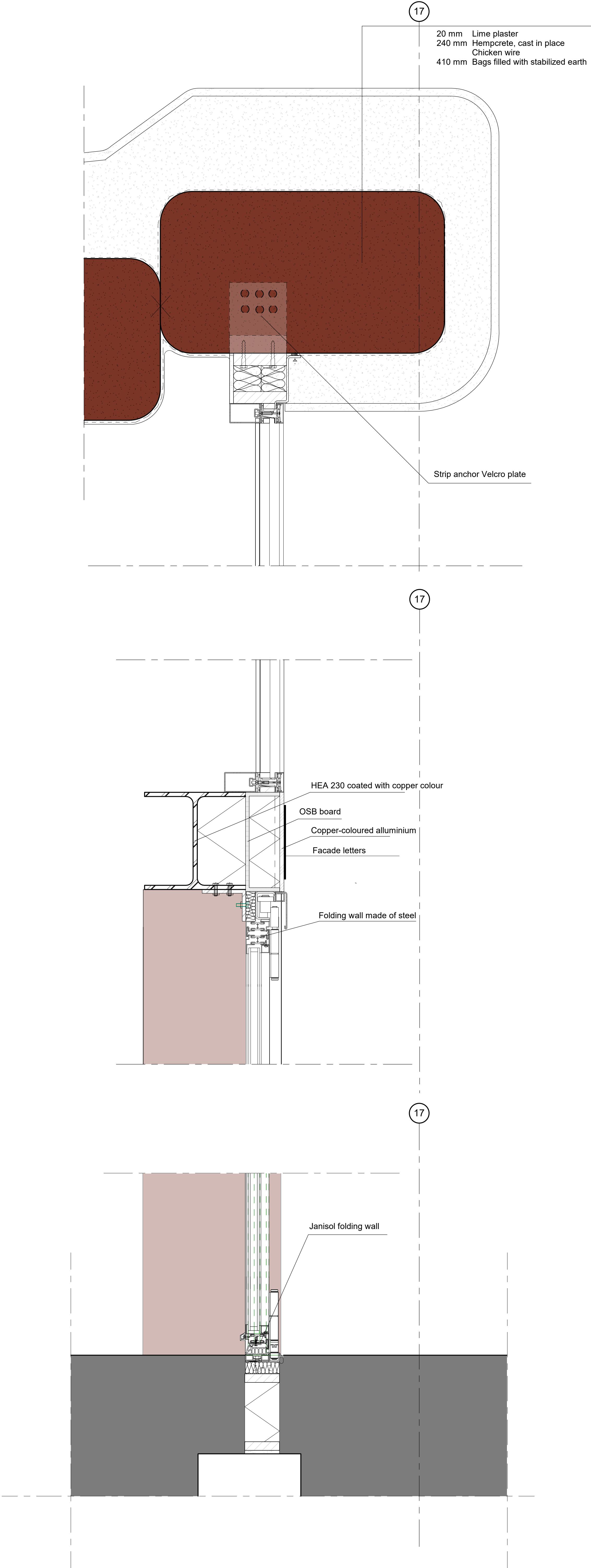




Fragment 1







4

3

1



