

NEUES KONZERTHAUS

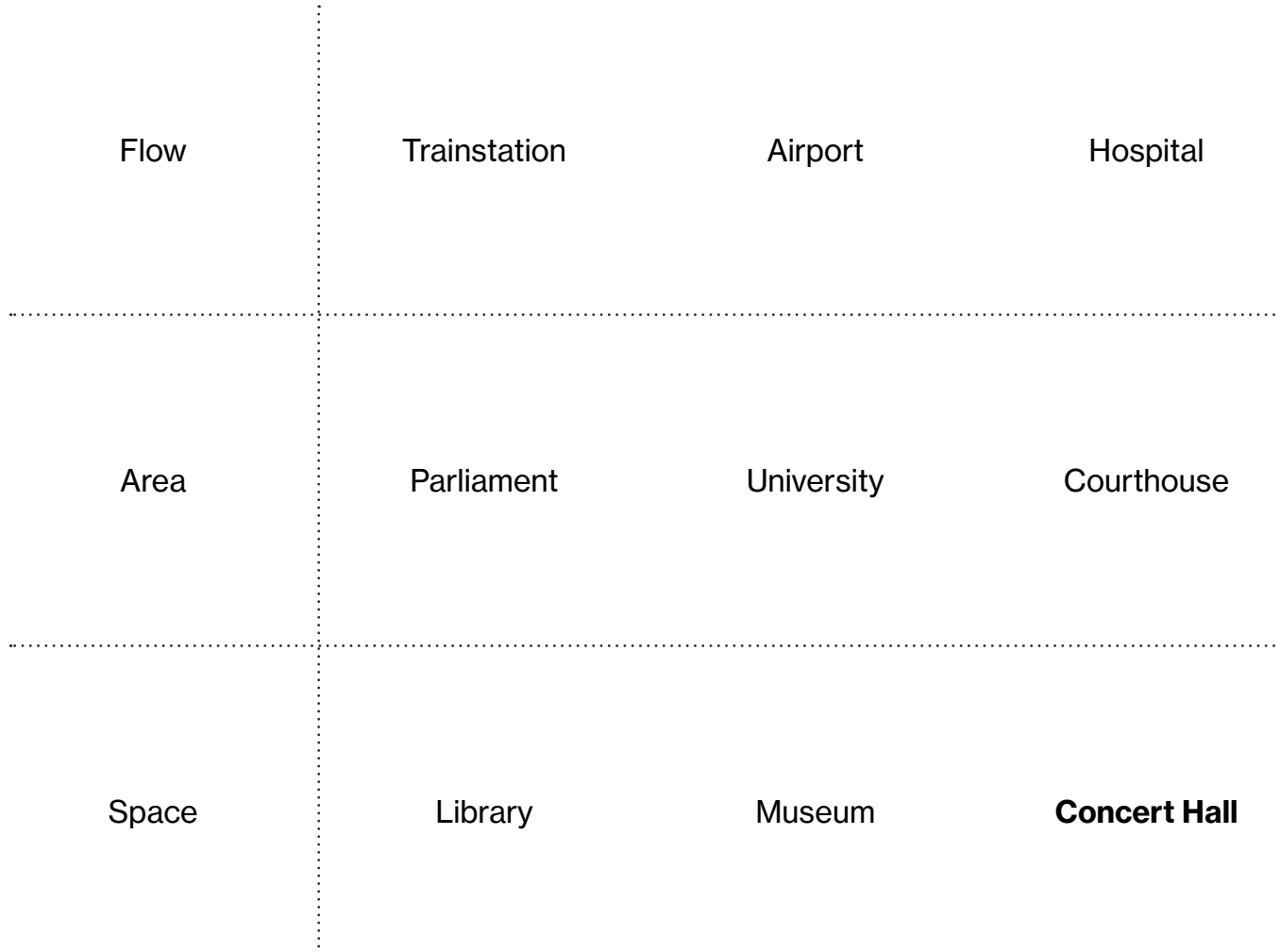


NEUES KONZERTHAUS

Bodies & Buildings Berlin



One of Berlin



Berlin



Berlin

West

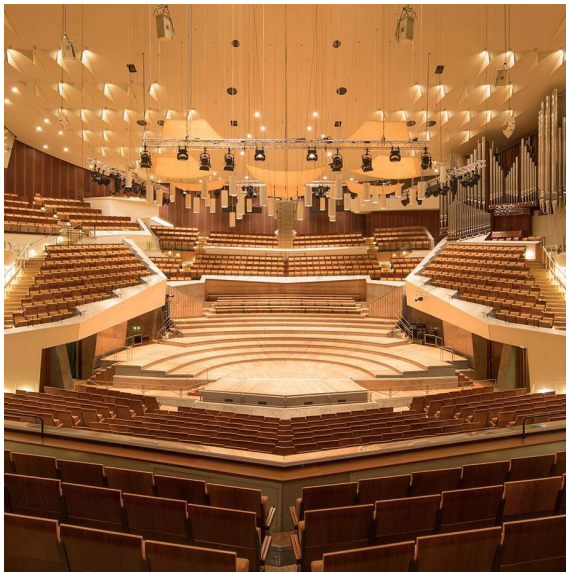


East

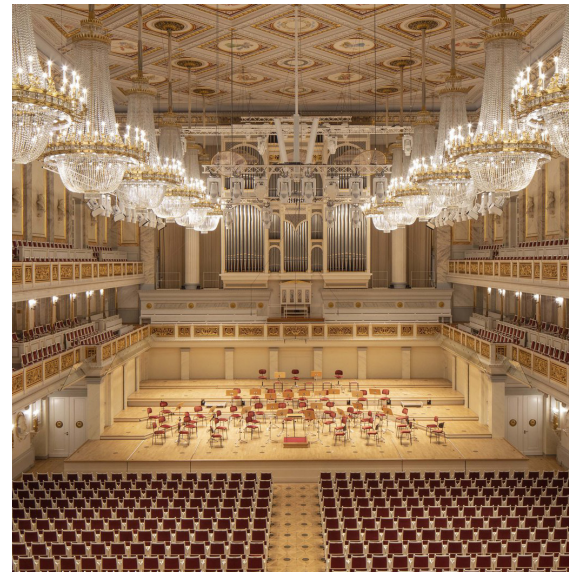


Berlin

Philharmonic



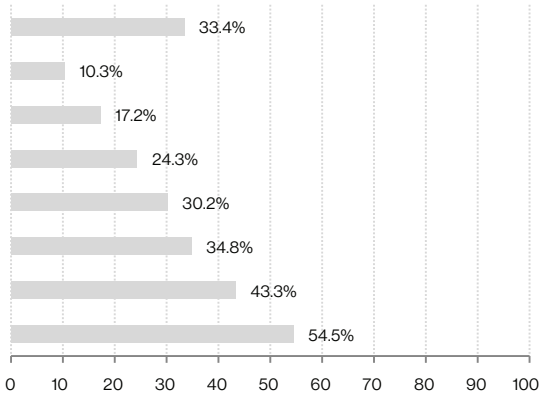
Konzerthaus



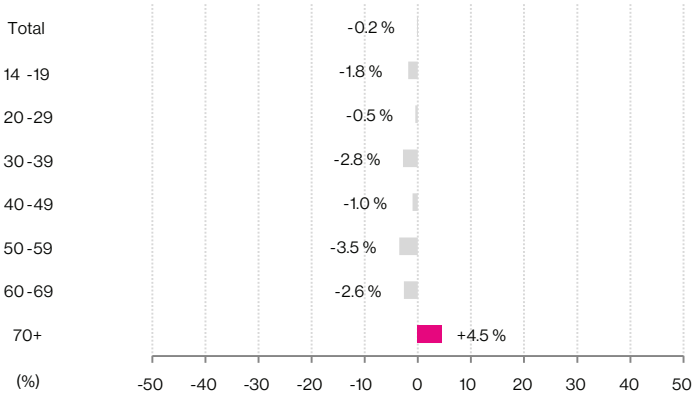
Public Building

How much of a public building is the concert hall?

Classical Music



Appreciation

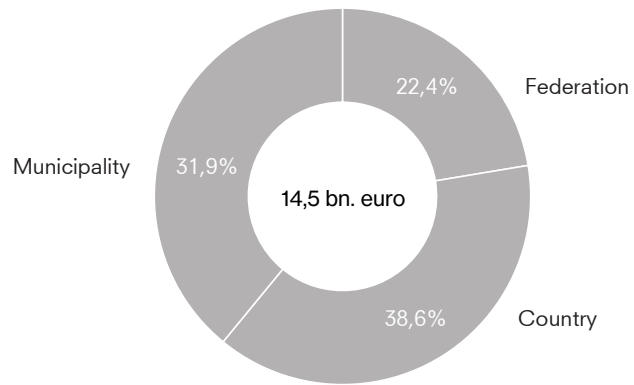


Changes 2012 - 2022

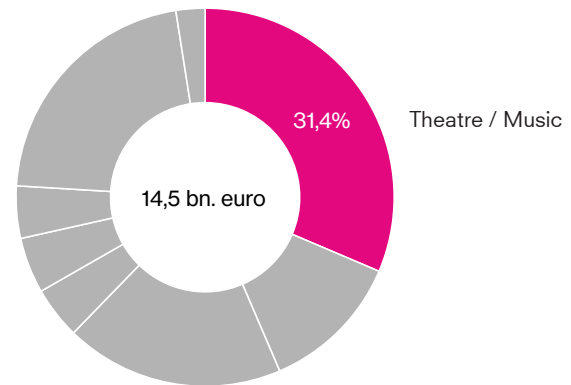
Staatsoper Unter den Linden



Funding



Public Sector



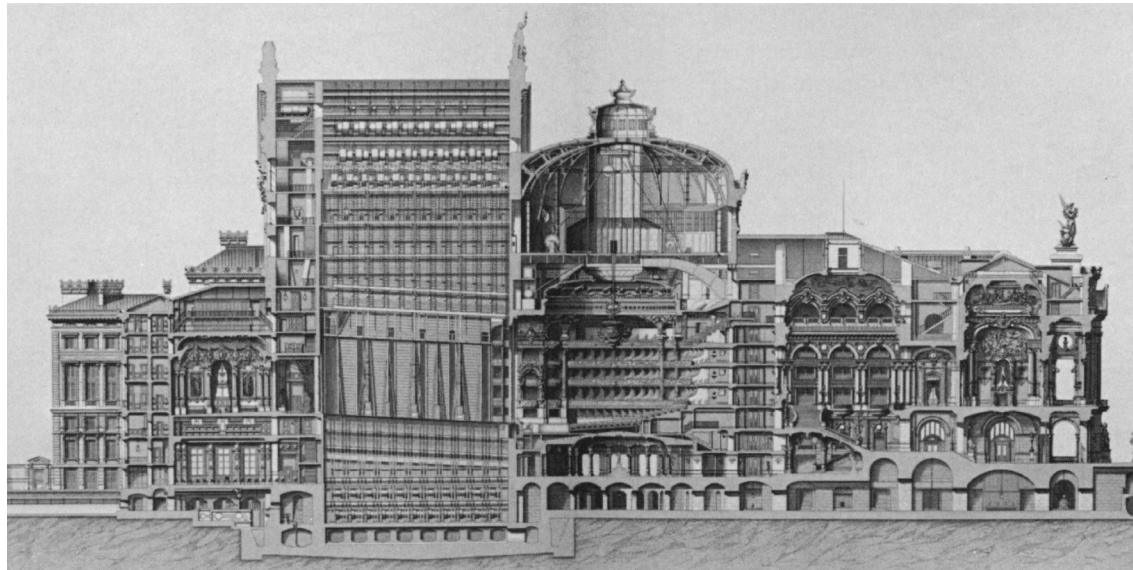
Cultural Sector

Question

What **spatial qualities** could invite **the broader audience** to **concert halls**?

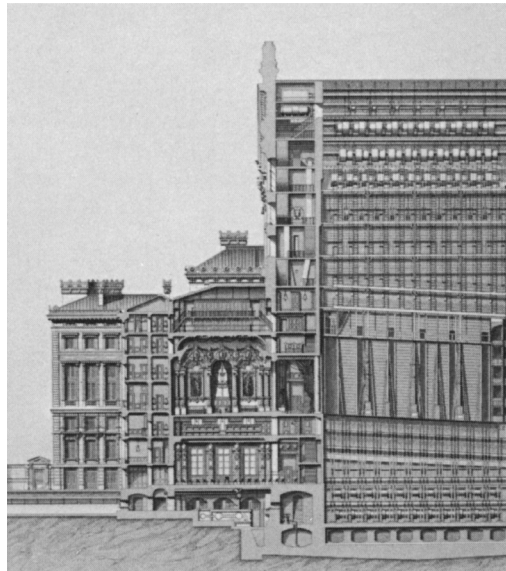
CONCEPT

Section 'Opera Garnier'

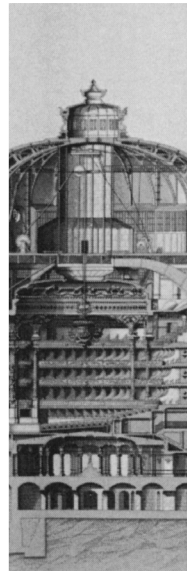


Front / Back

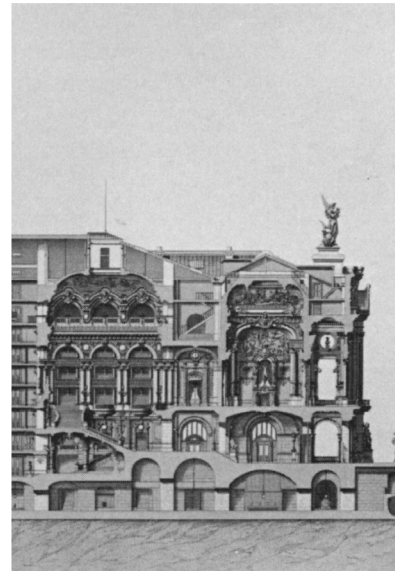
Back of House



House



Front of House



Sequence

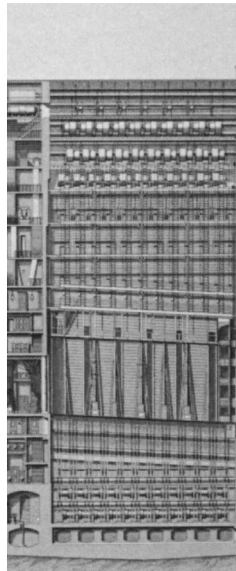
Backstage



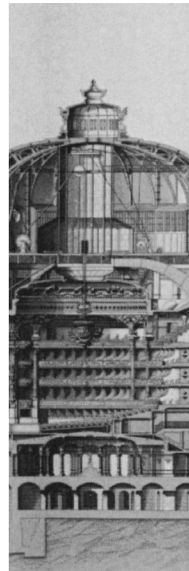
Stage



Auditorium



Foyer



Entrance



Specific / Generic

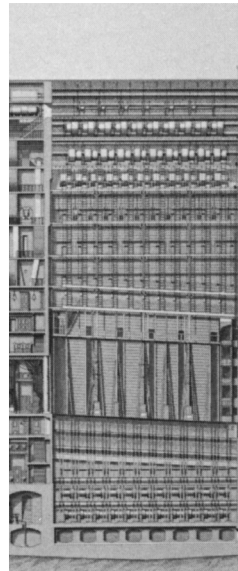
Backstage



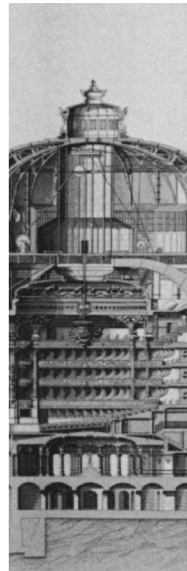
Stage



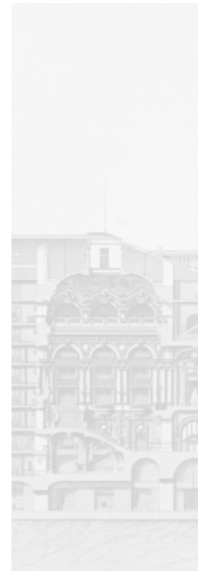
Stage



Auditorium



Foyer



Entrance



Specific / Generic

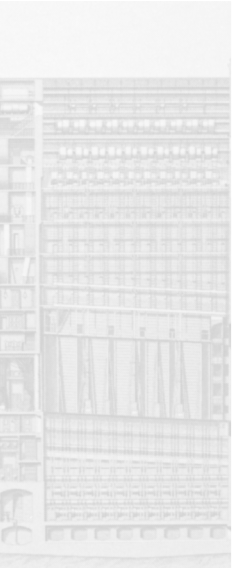
Backstage



Stage



Auditorium



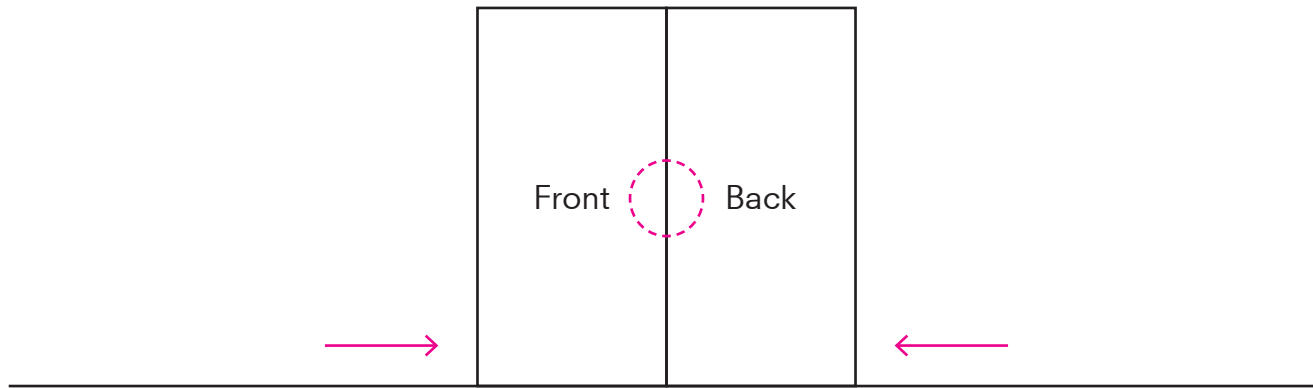
Foyer



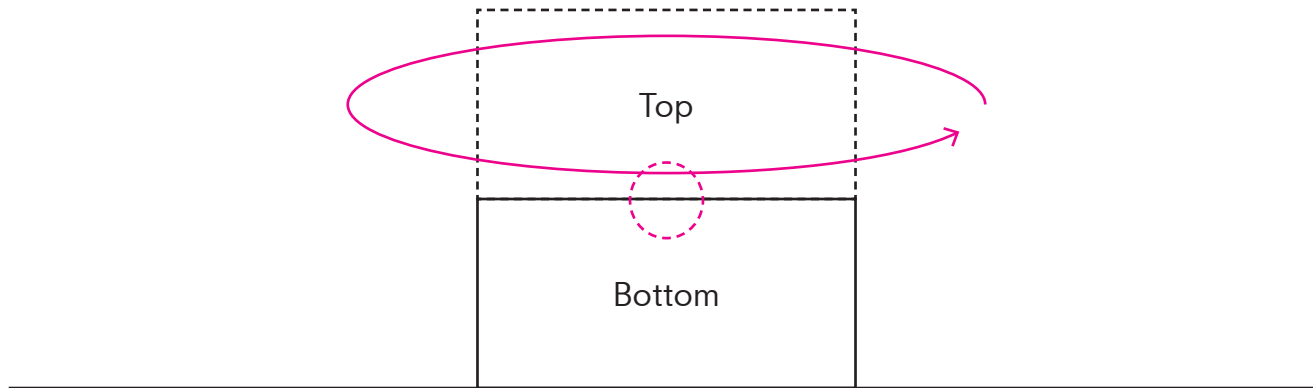
Entrance



Current



Proposal



Proposal

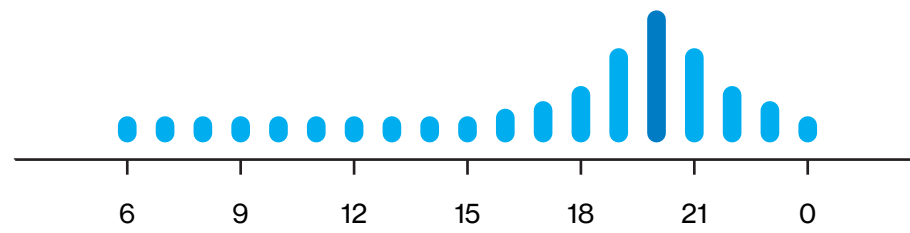
PUBLIC



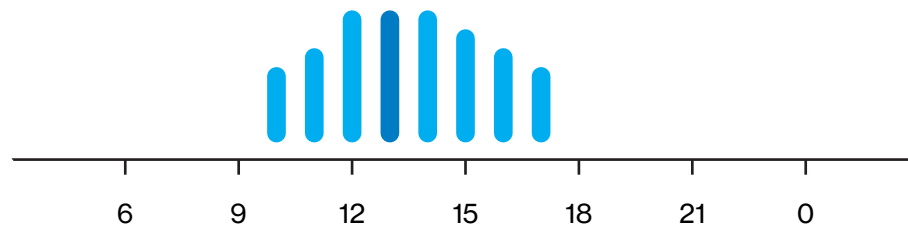
Proposal

...a space of “sociability, informality, and enjoyment of art.” - Kramer, 2007

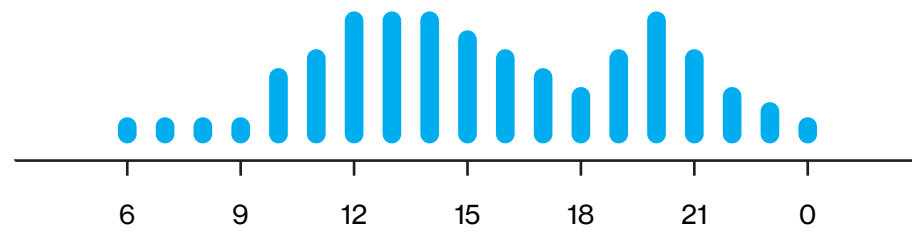
Berlin Philharmonic



Neue Nationalgalerie



Neues Konzerthaus



Palais de Tokyo



Oslo Opera



Neue Nationalgalerie



DESIGN BRIEF

Design Brief



Berlin Municipality

Client



Friedrichstraße, Kreuzberg

Site



+/- 10.000 m²

Program

Client

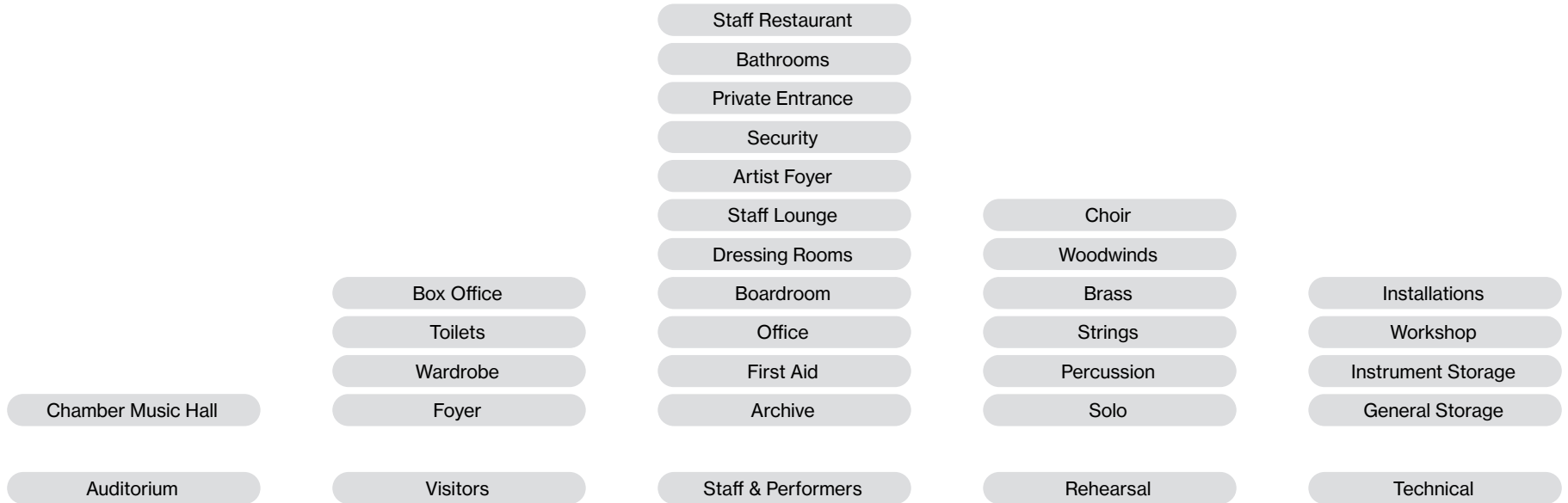


Senatsverwaltung
für Kultur und Europa

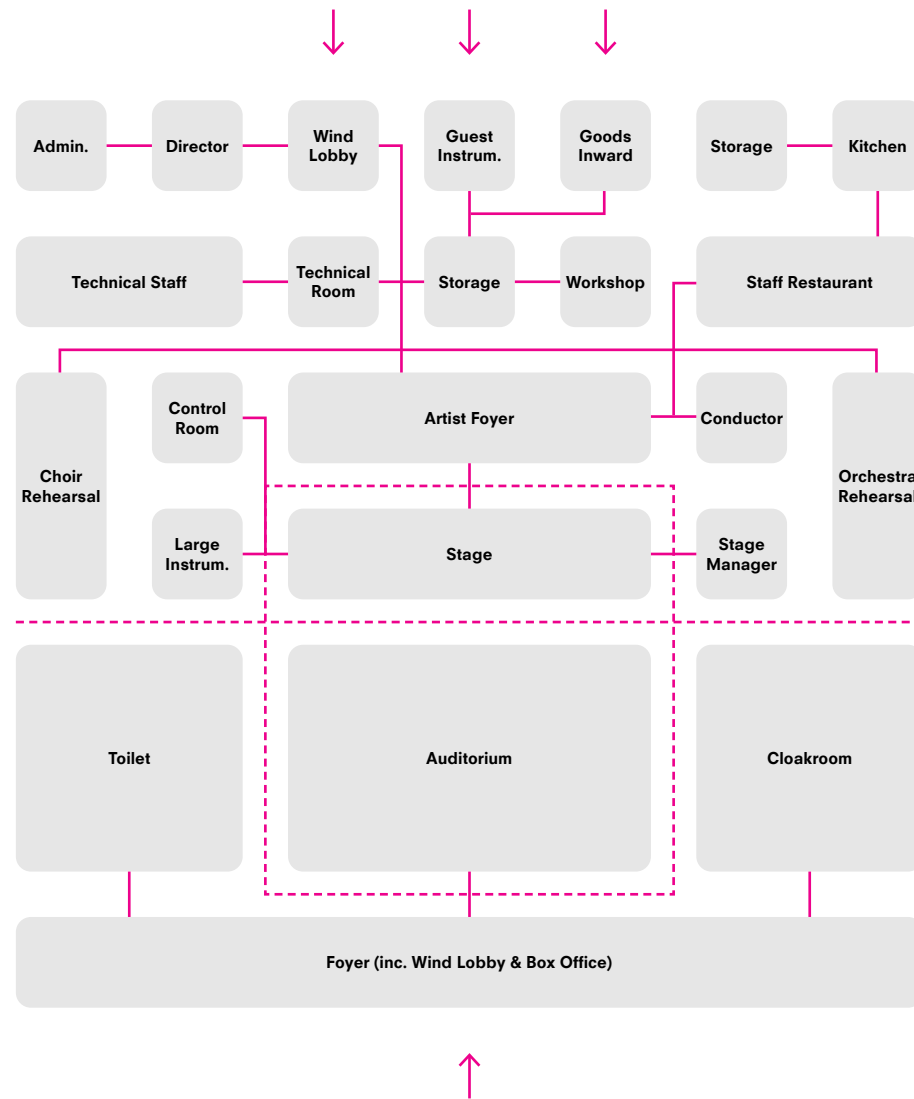
Site



Program



Relation Scheme




DESIGN

Potential

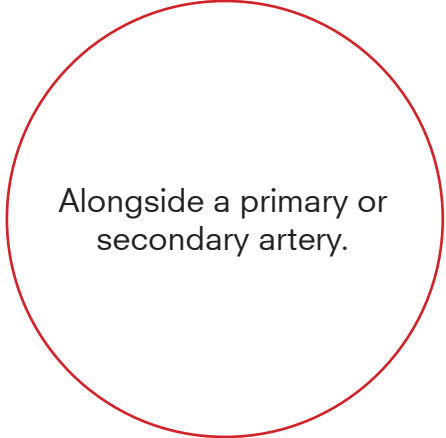


Site Requirements




Within proximity of a
transport hub.

Reachability



Alongside a primary or
secondary artery.

Visibility



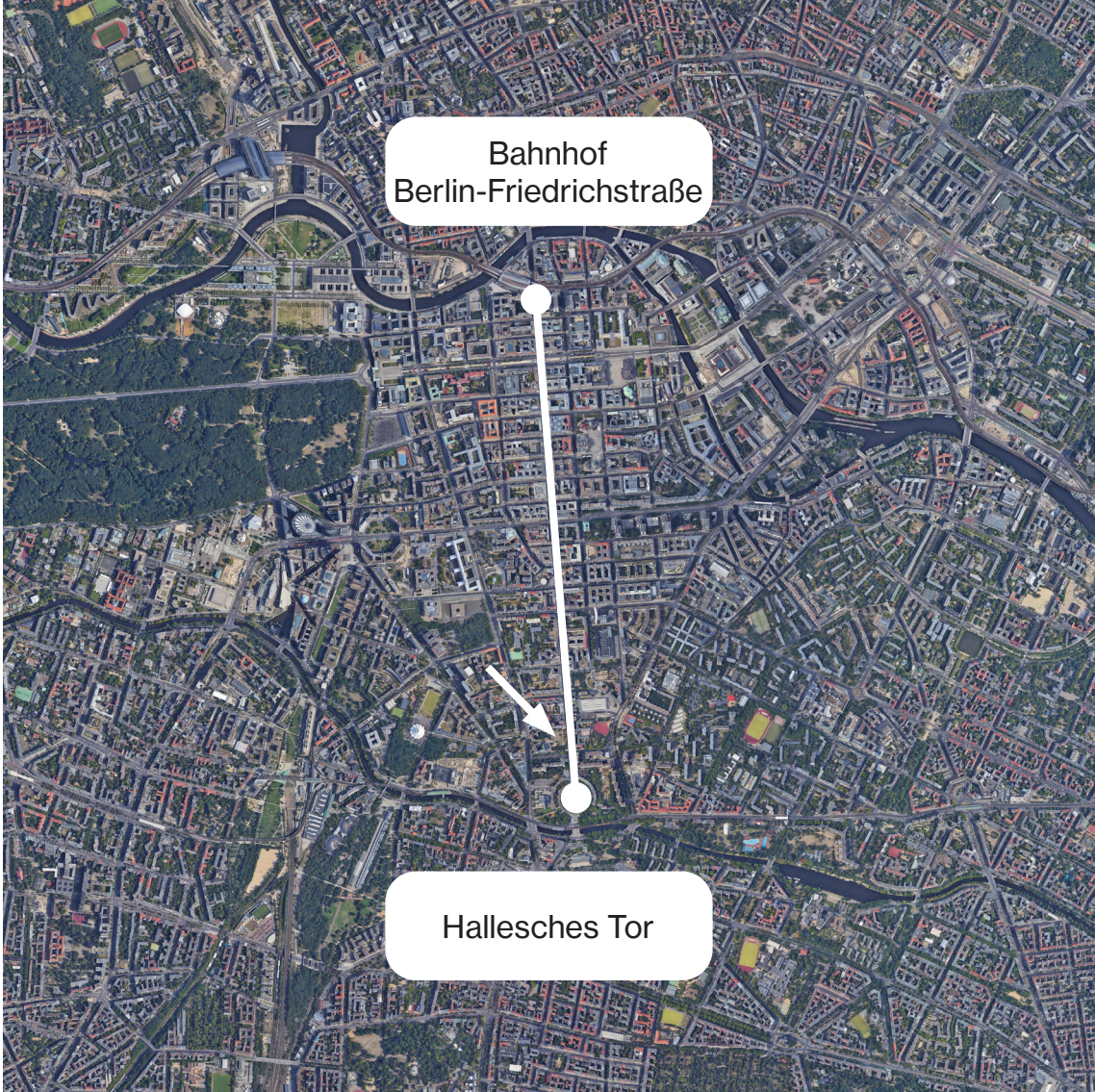
Adjacent to public space.

Capacity

Unter den Linden



Friedrichstraße



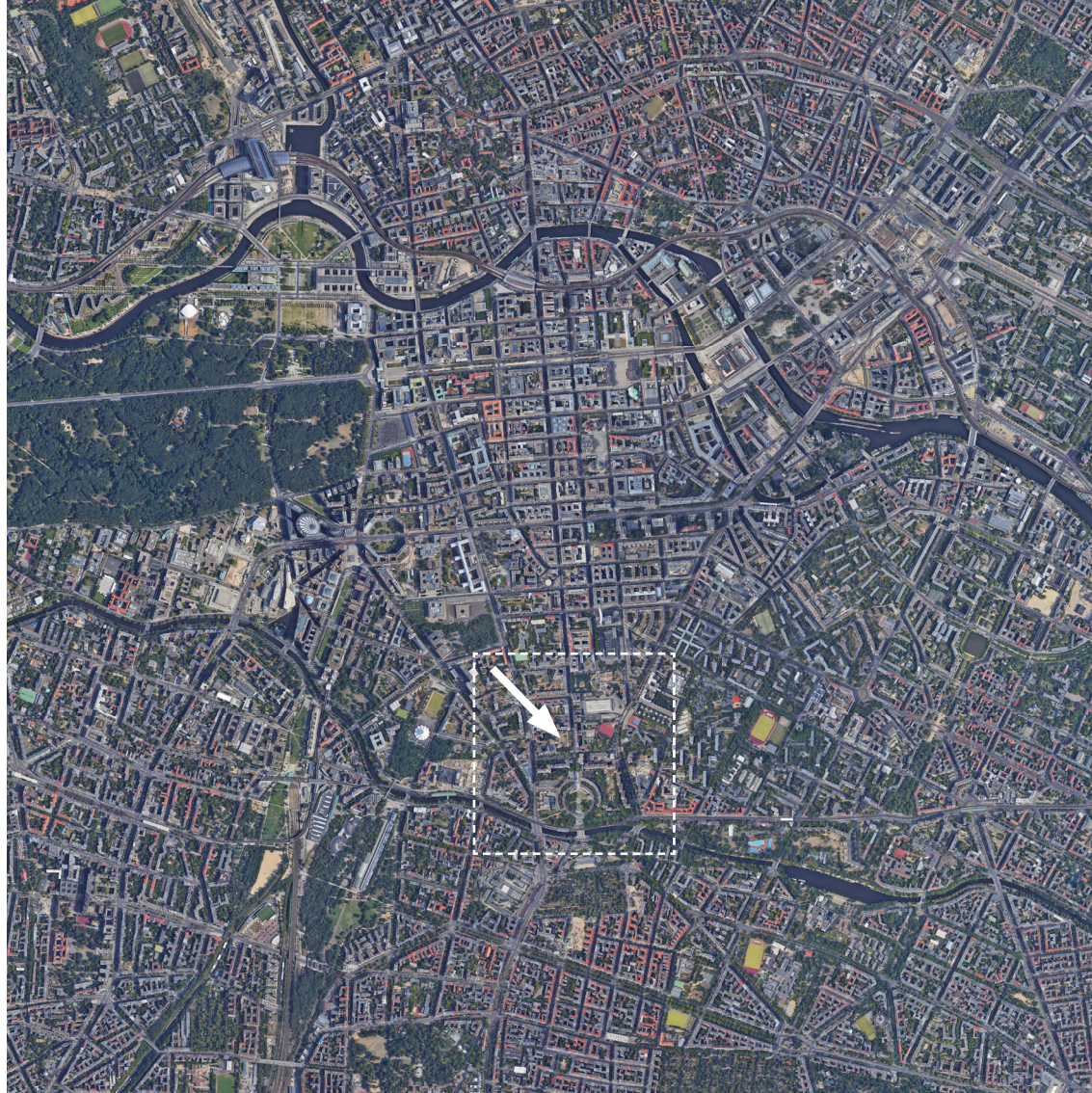
Berlin Wall



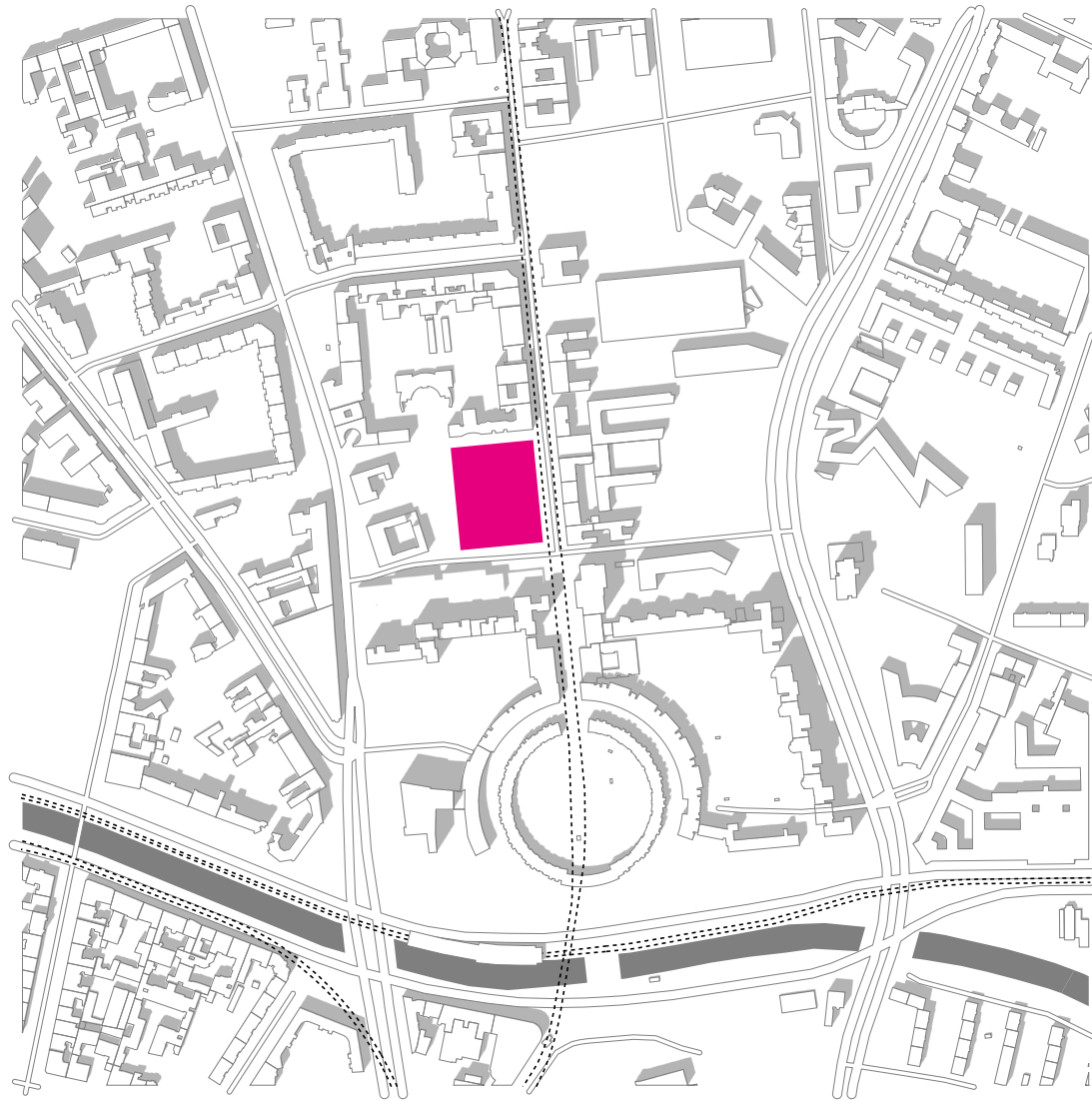
Status/Dynamik-Index (2021)



Context



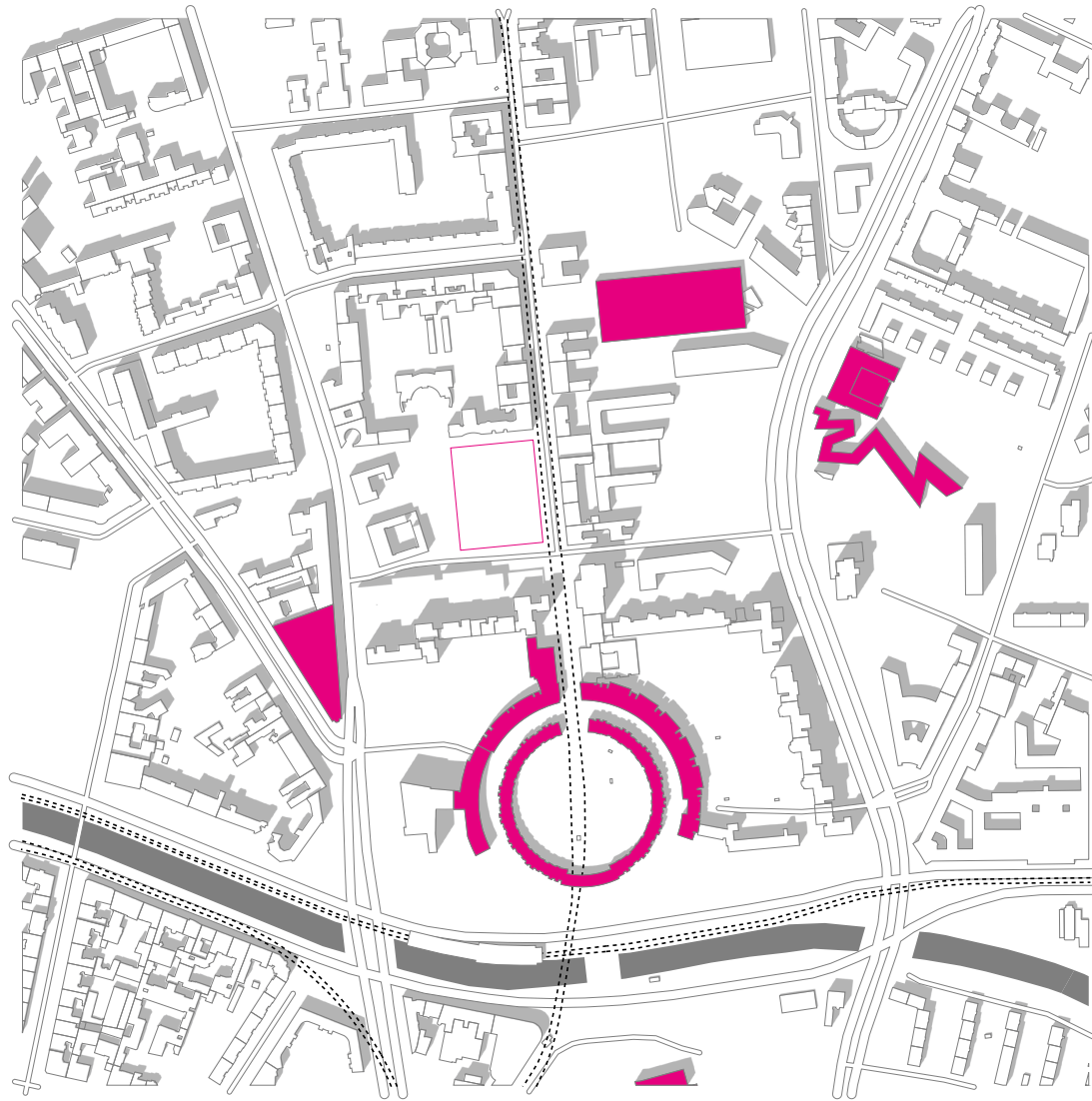
Site



1:2000



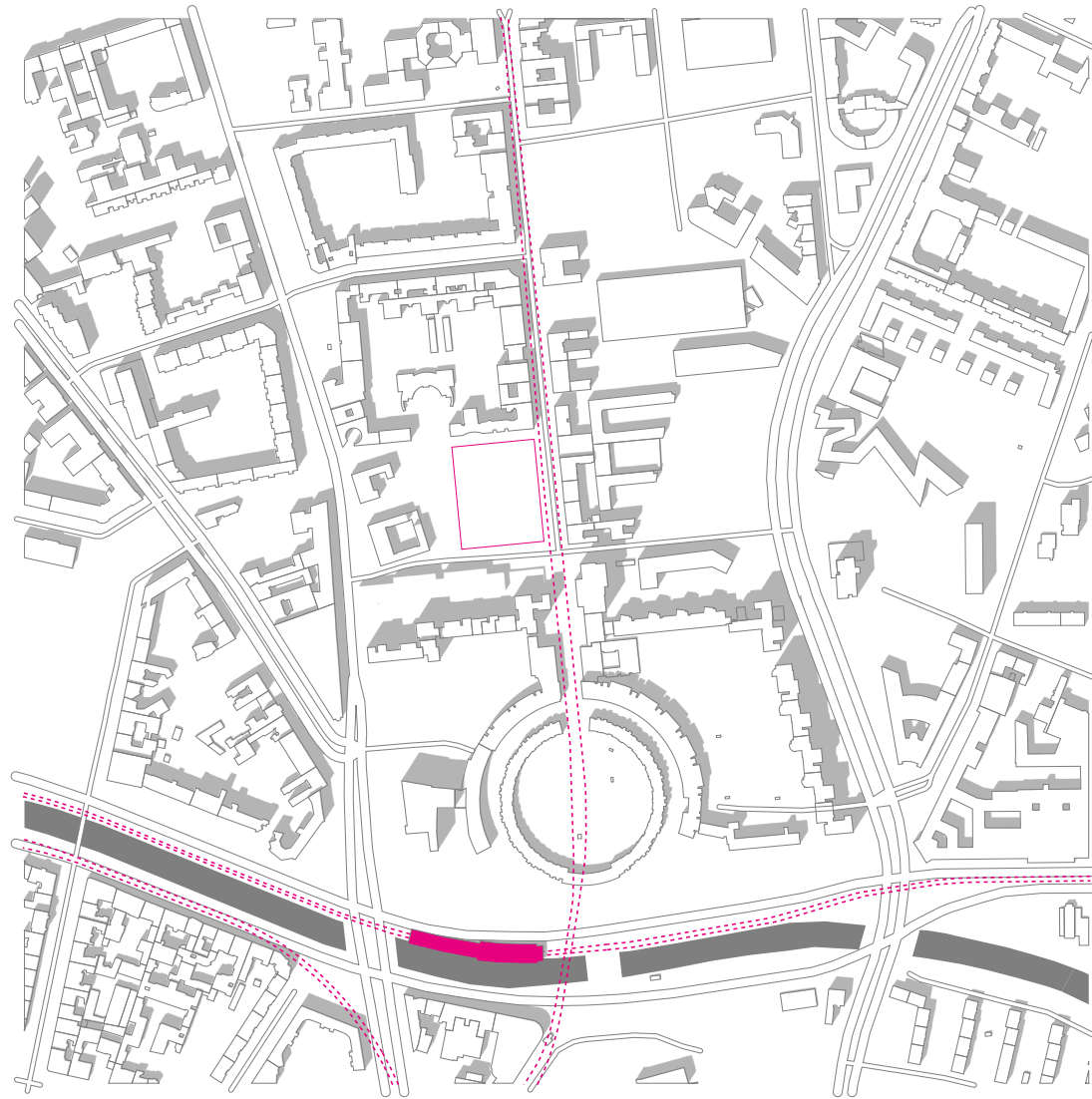
Landmarks



1:2000



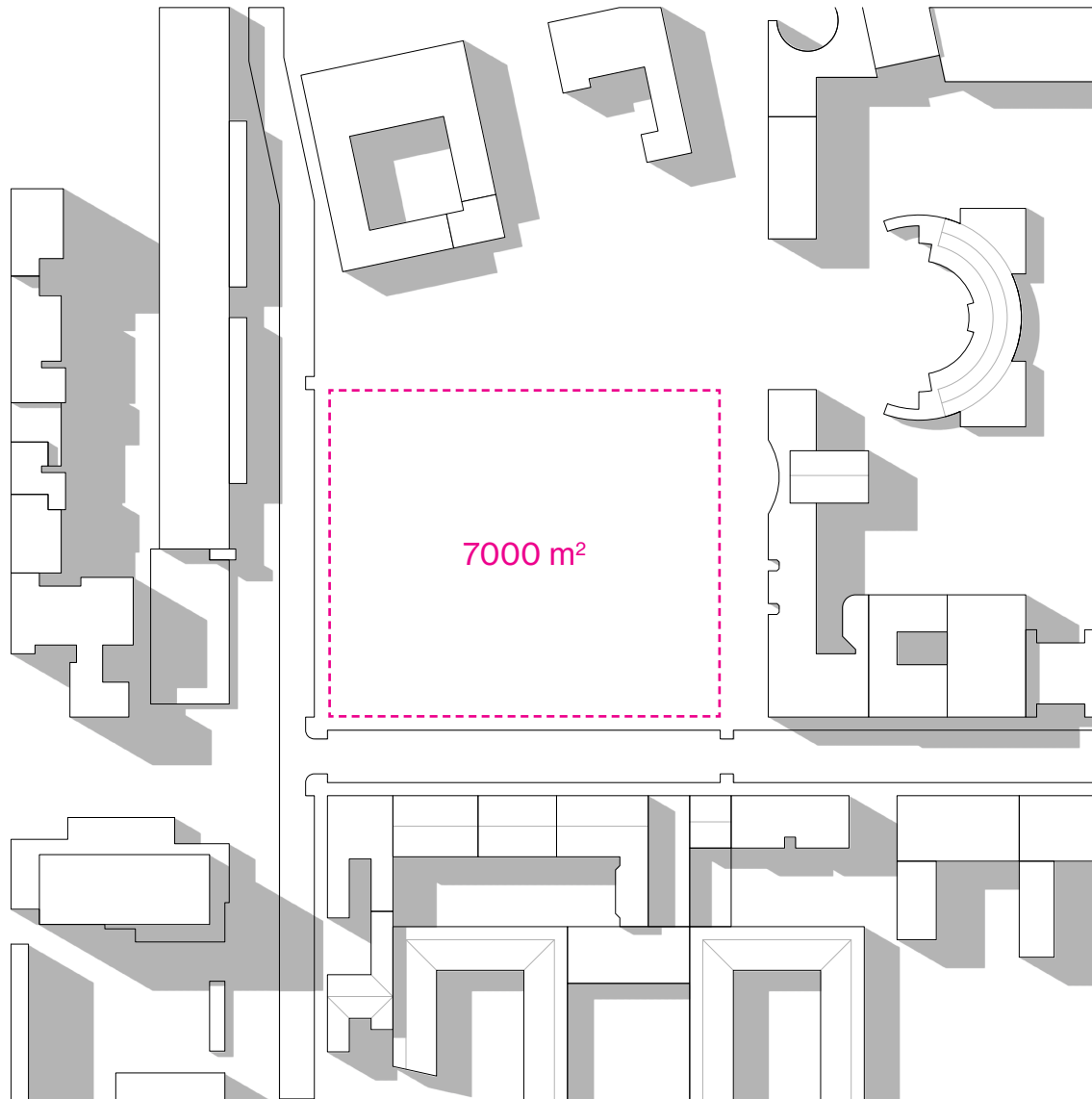
Public Transport



1:2000



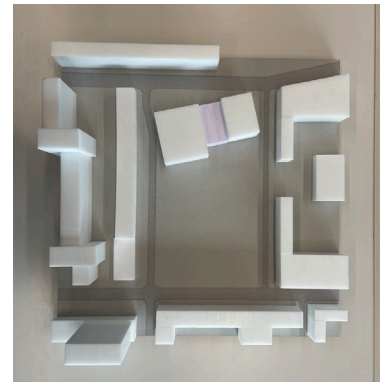
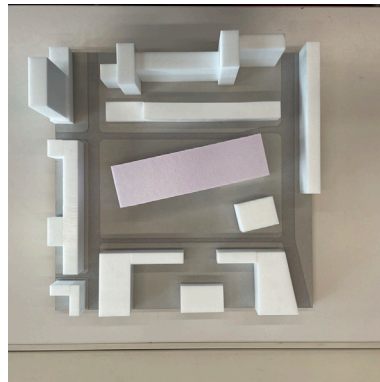
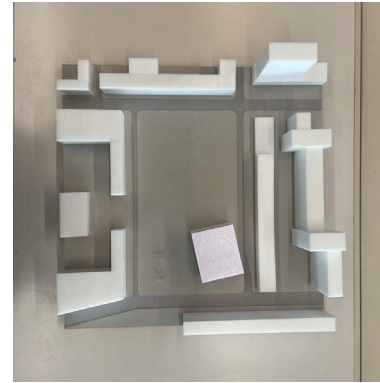
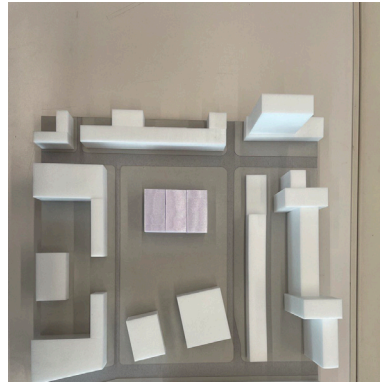
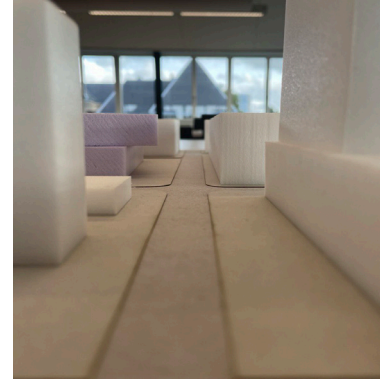
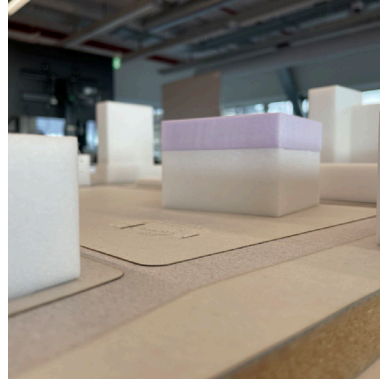
Plot



1:500



Studies



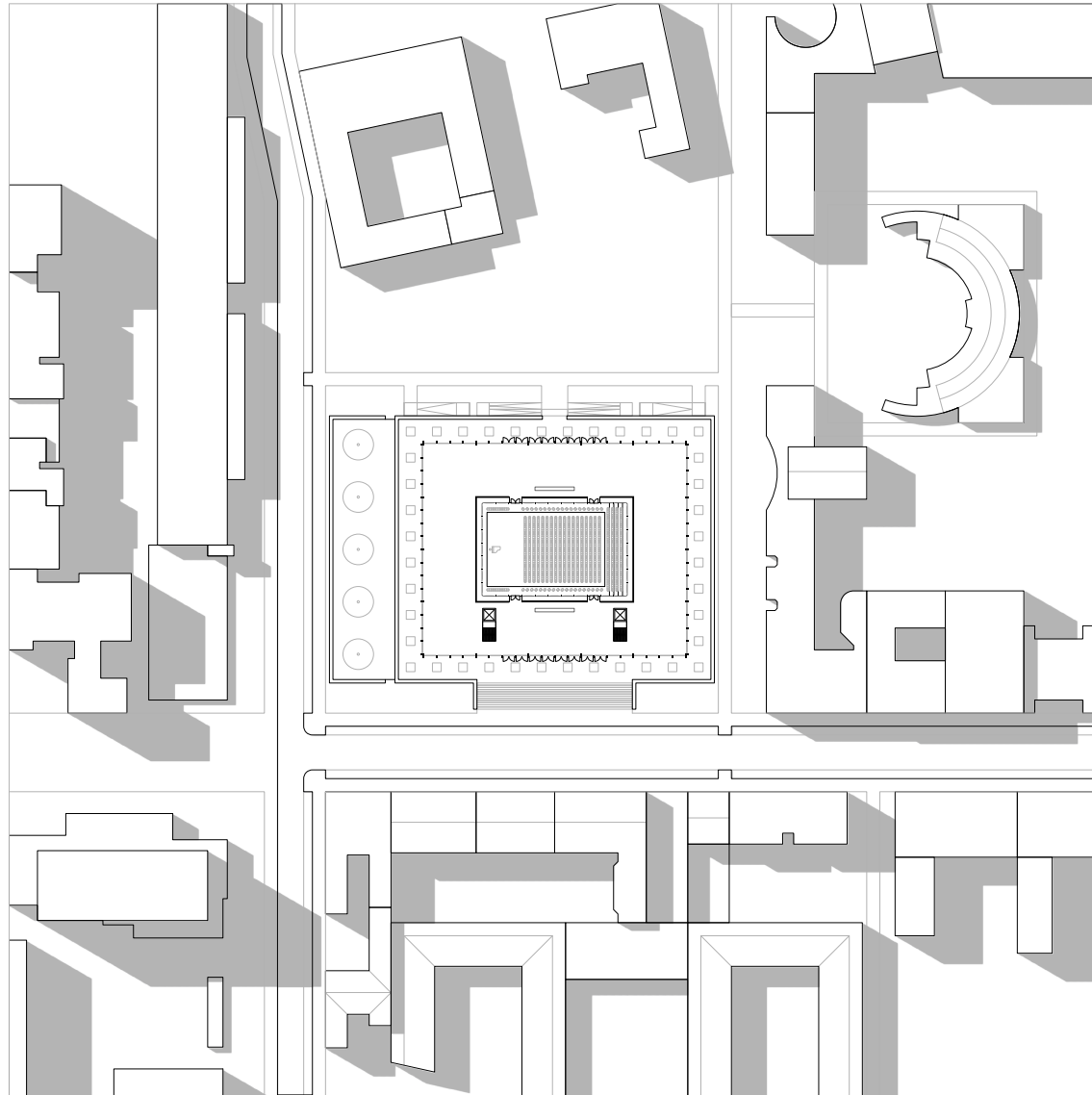
Studies



Site



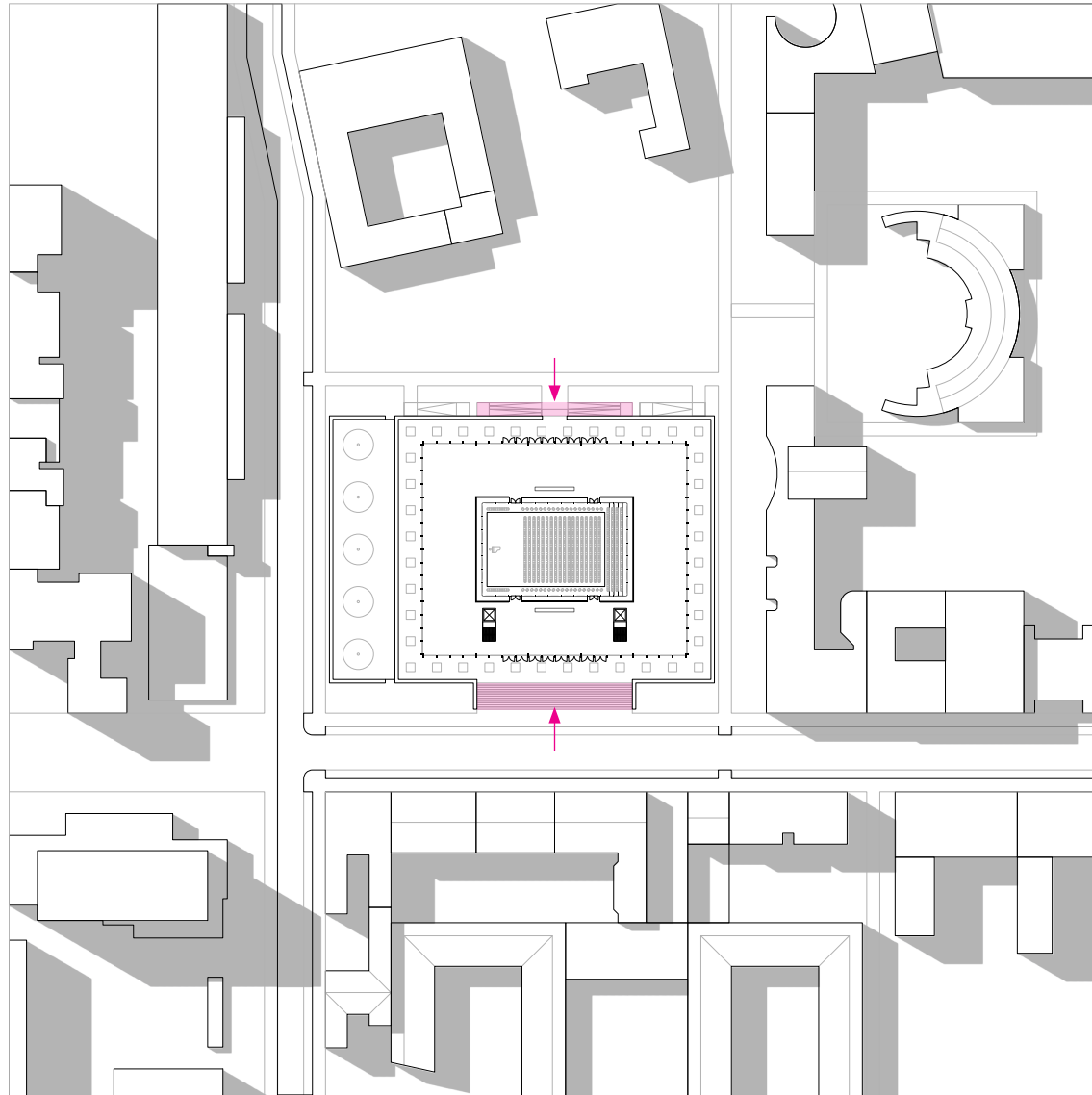
Urban Implementation



1:500



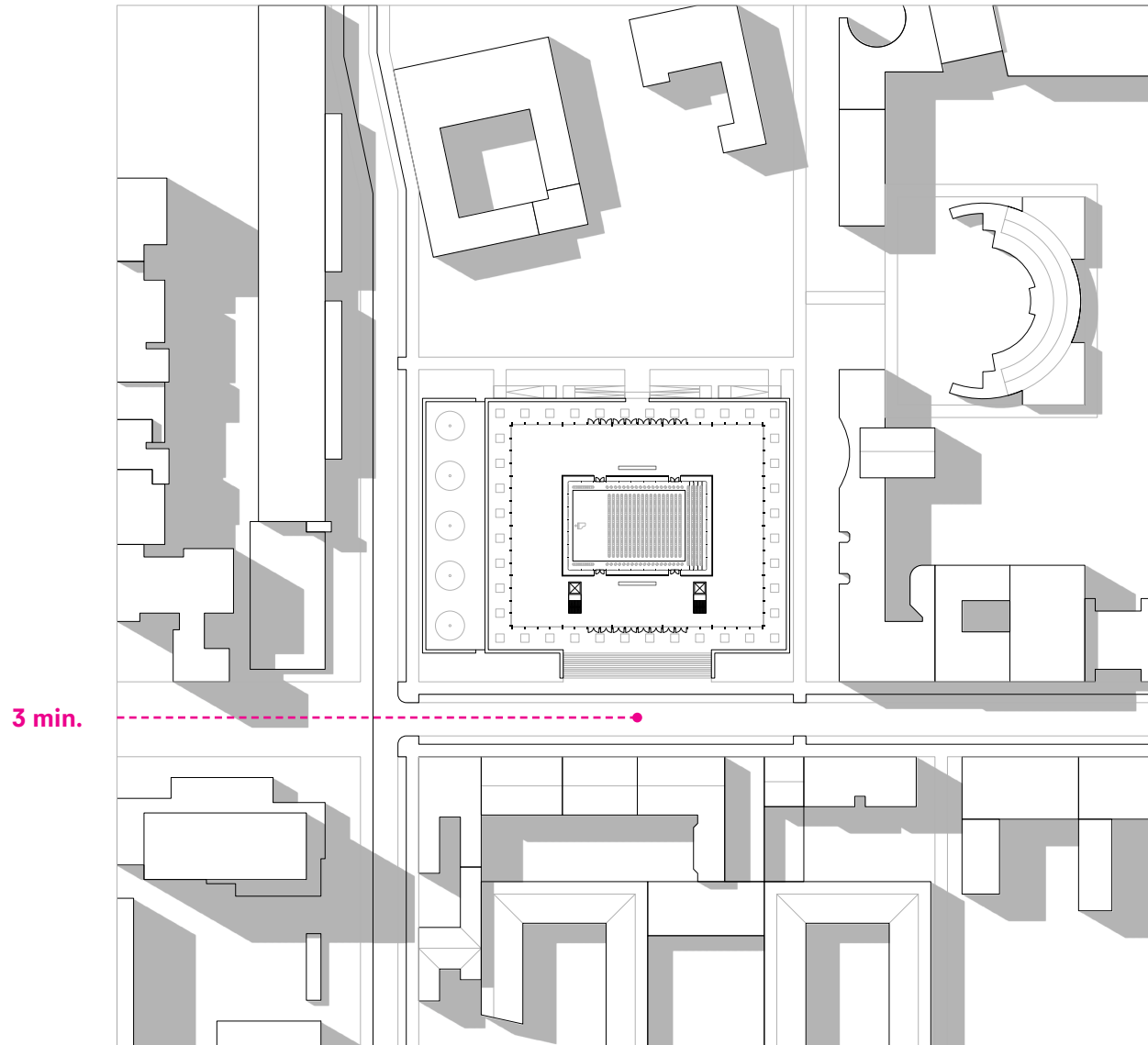
Entrances



1:500



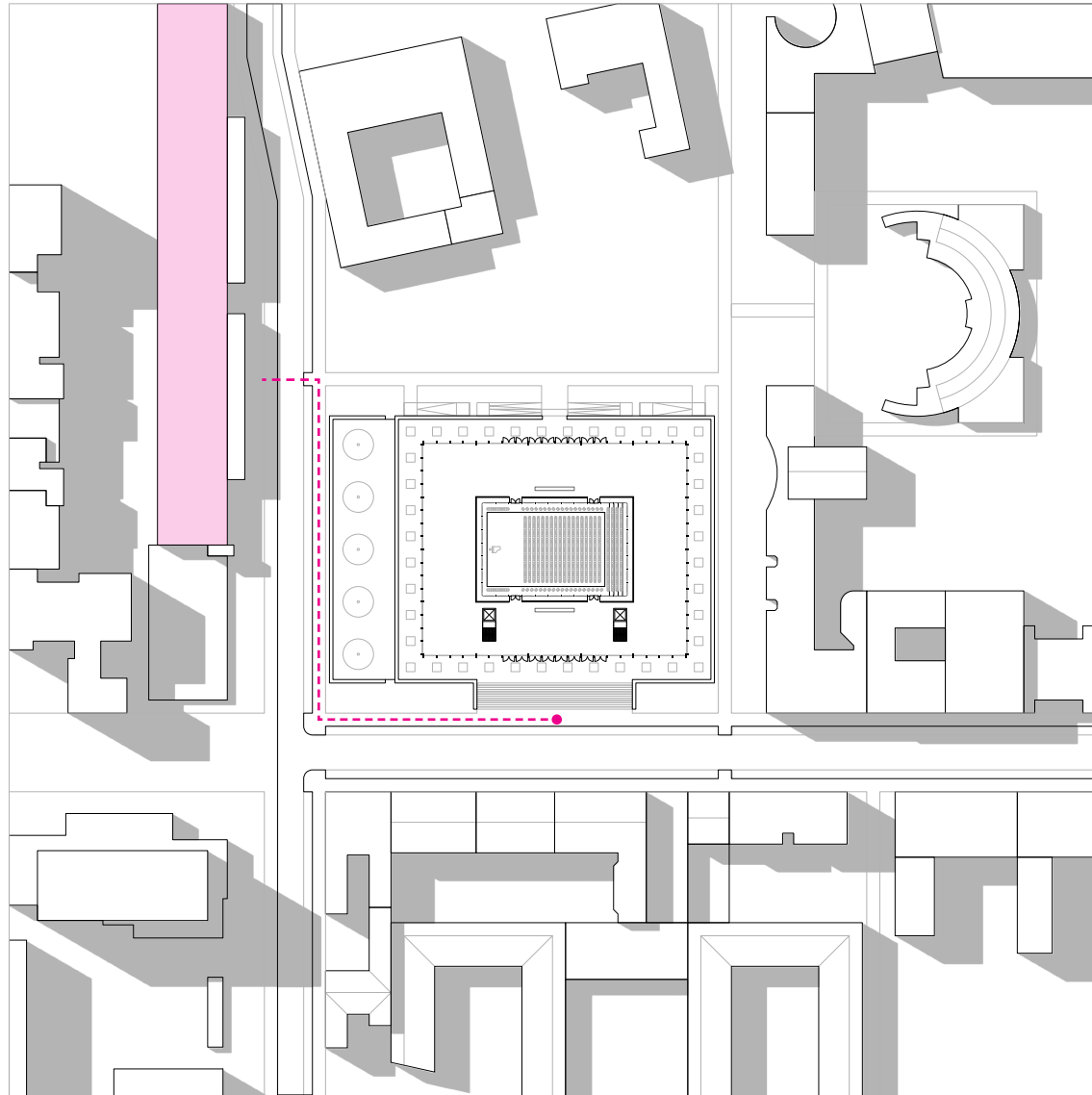
Public Transport



1:500



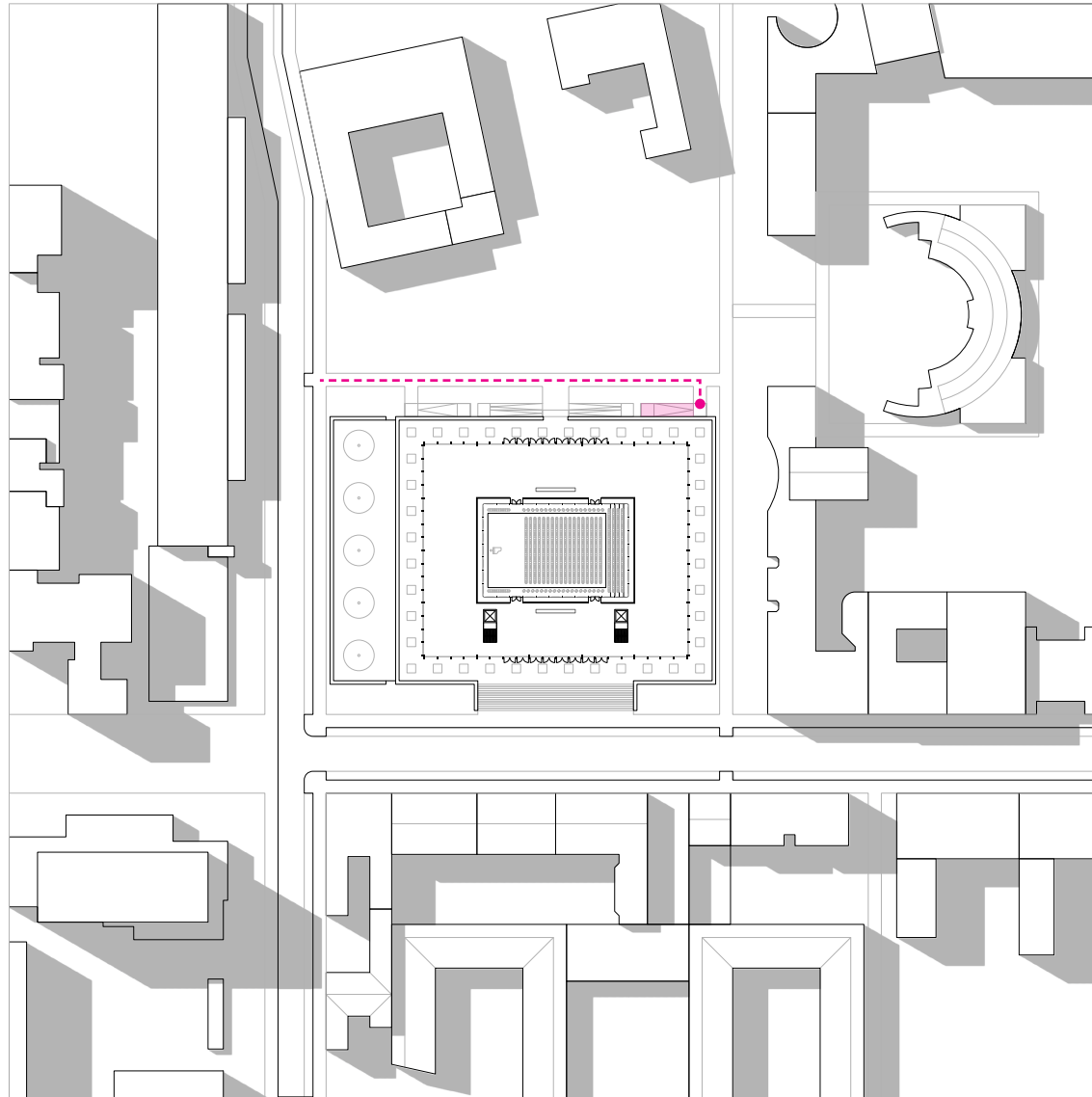
Parking



1:500



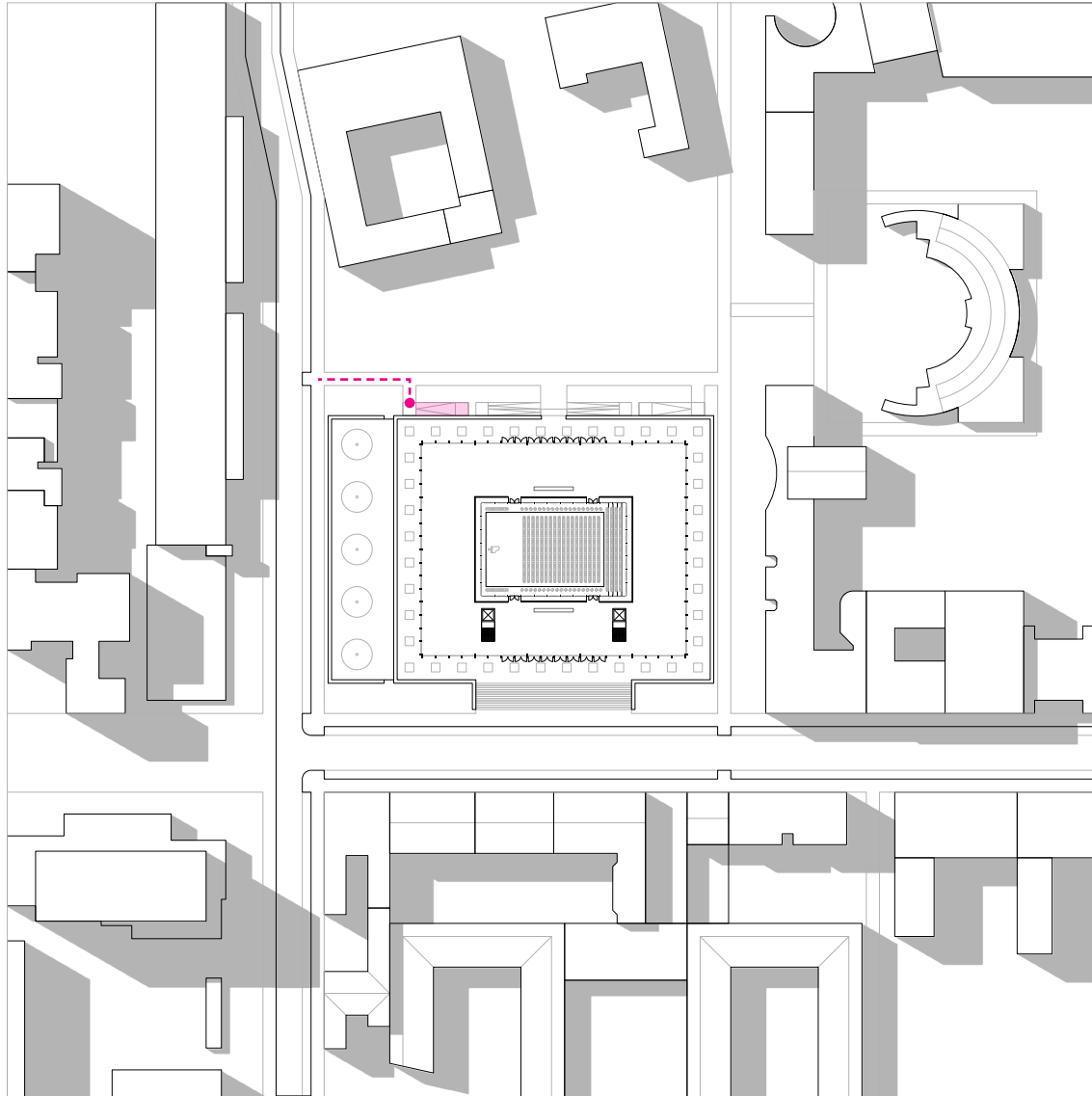
Logistics



1:500



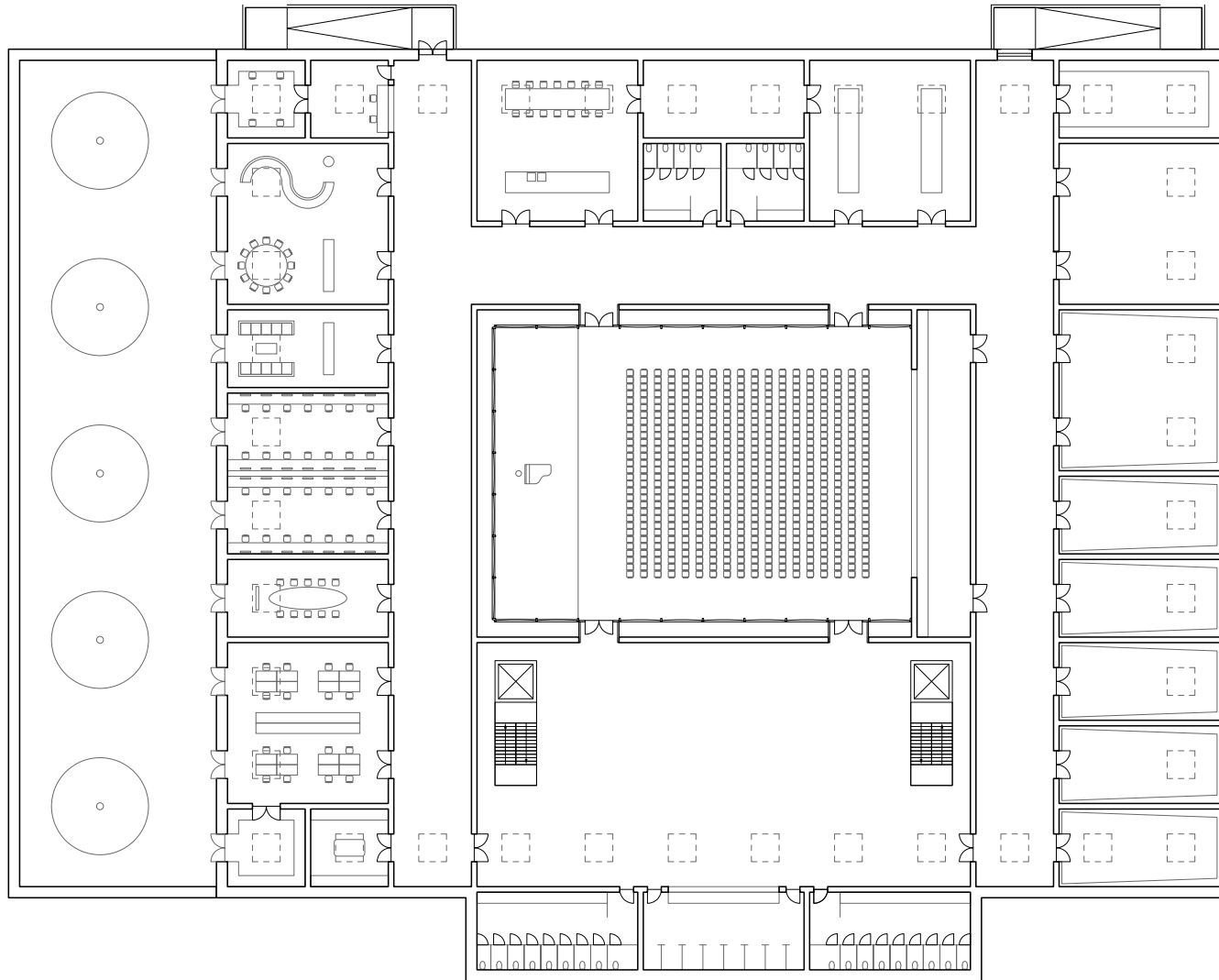
Staff / Performers



1:500



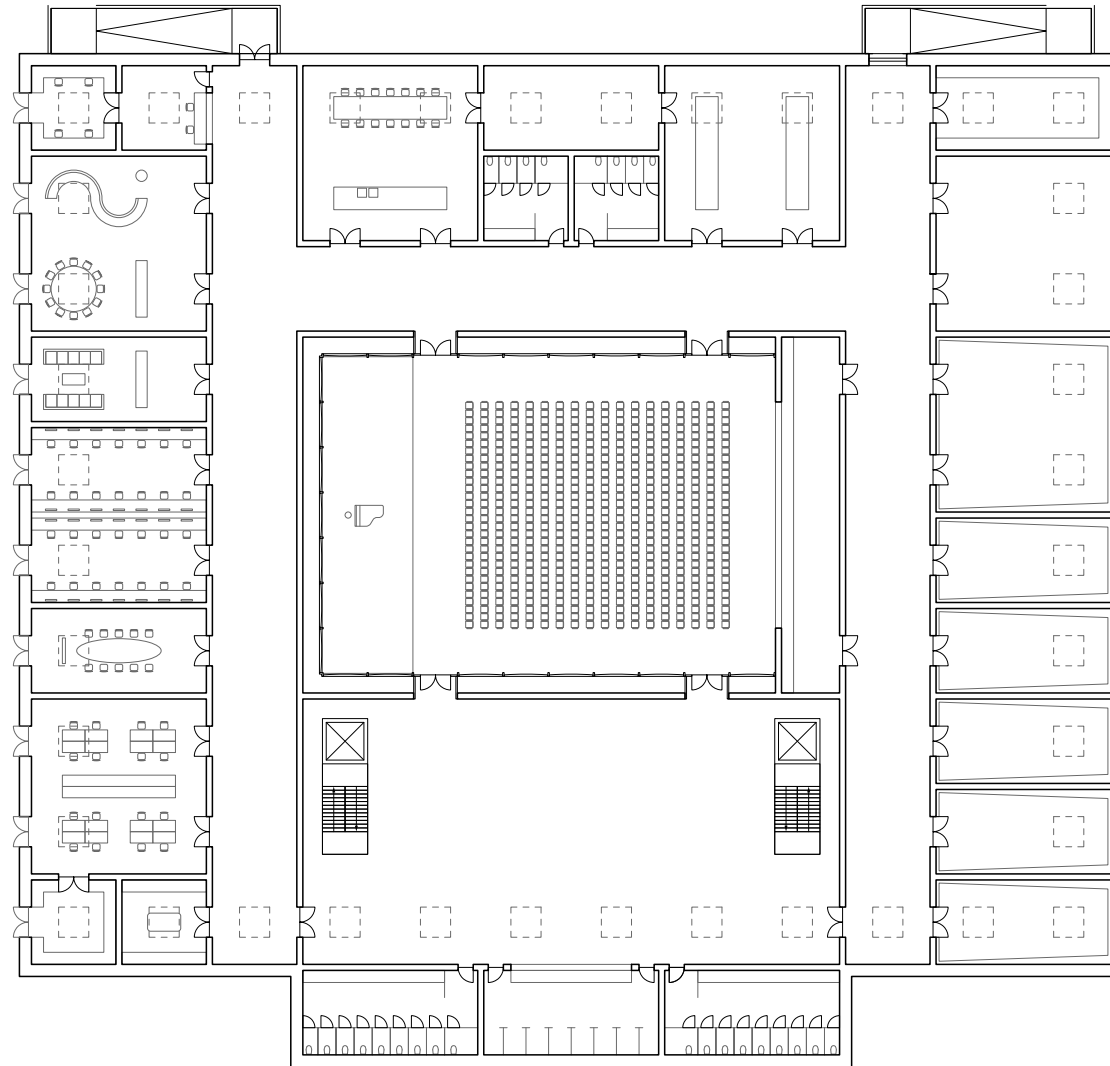
Plan -1



1:200

CP

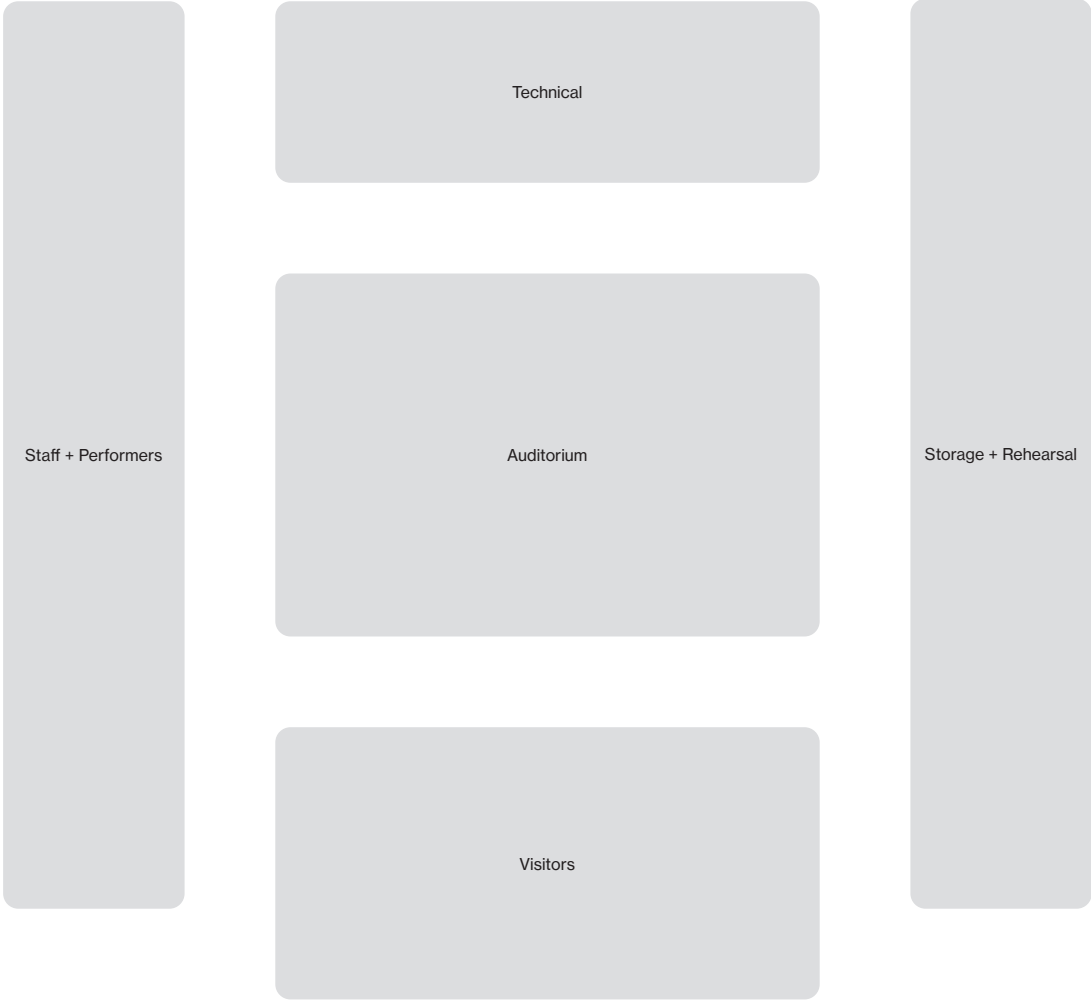
Building



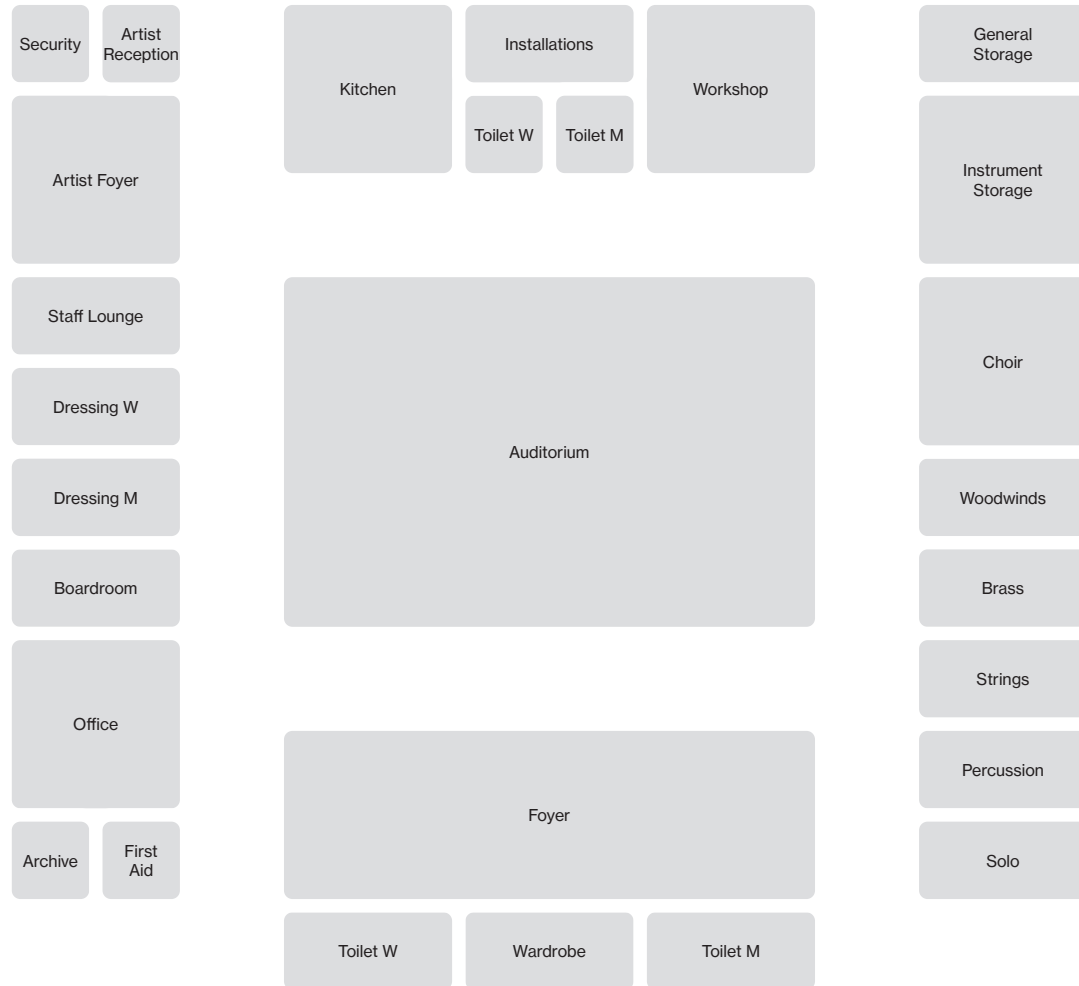
1:200

CP

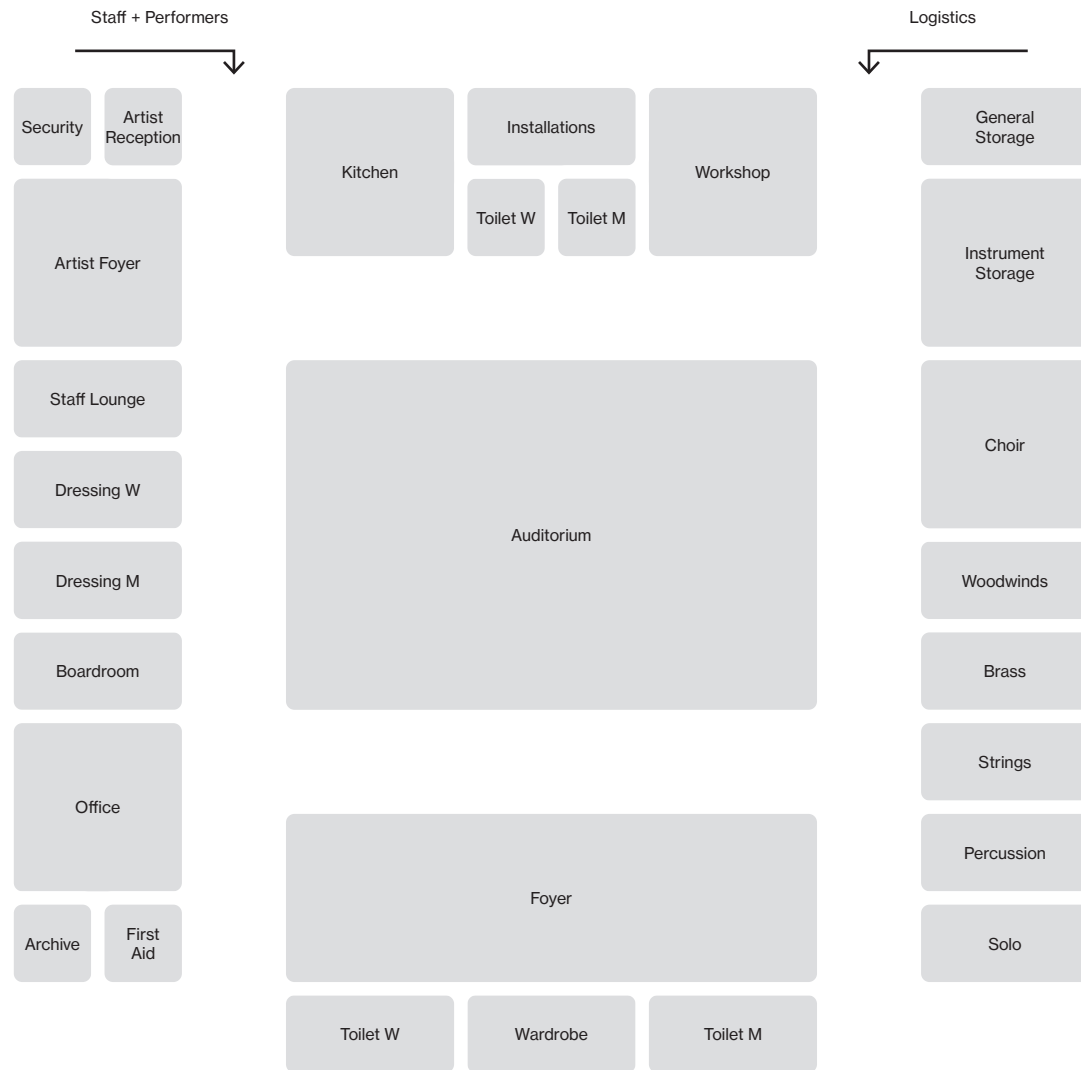
Zoning



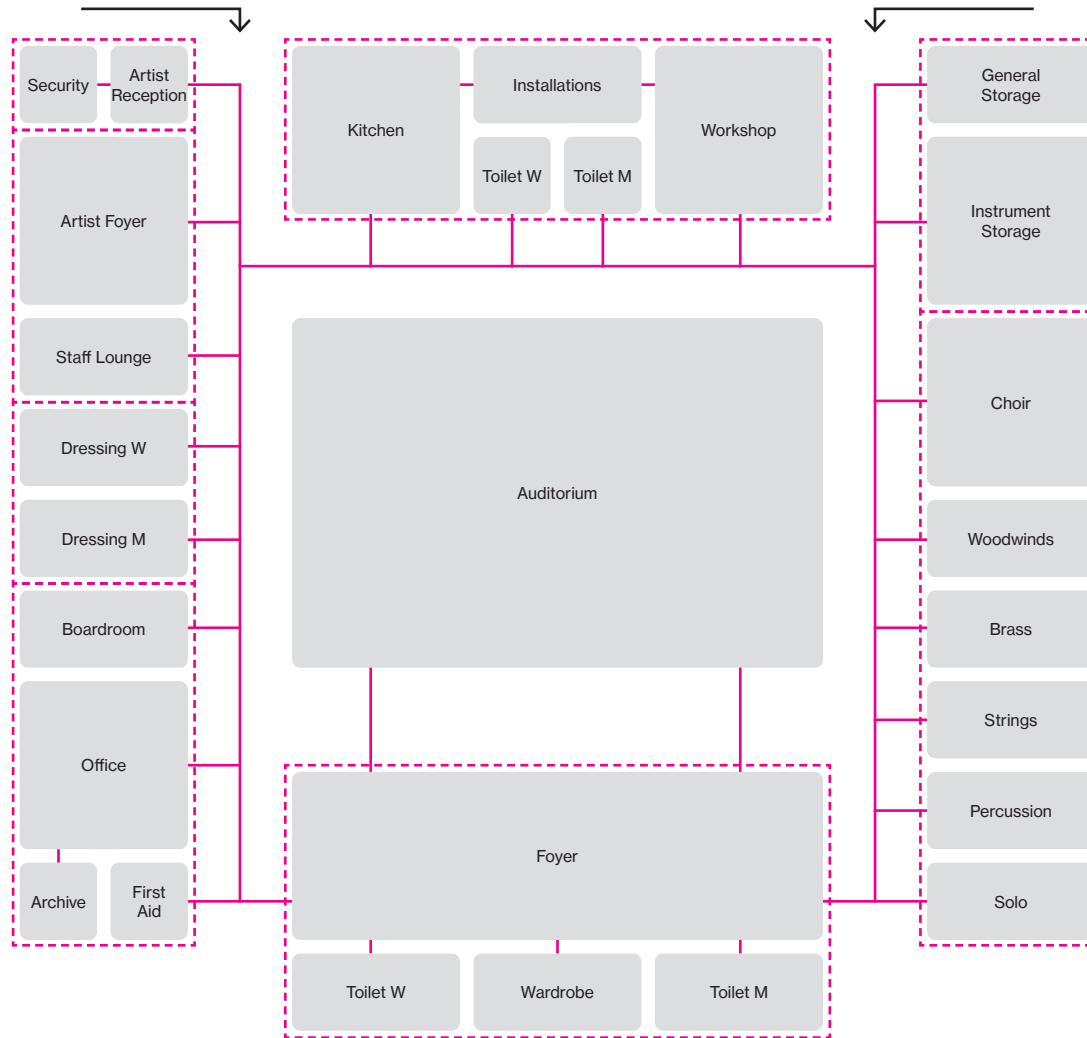
Program



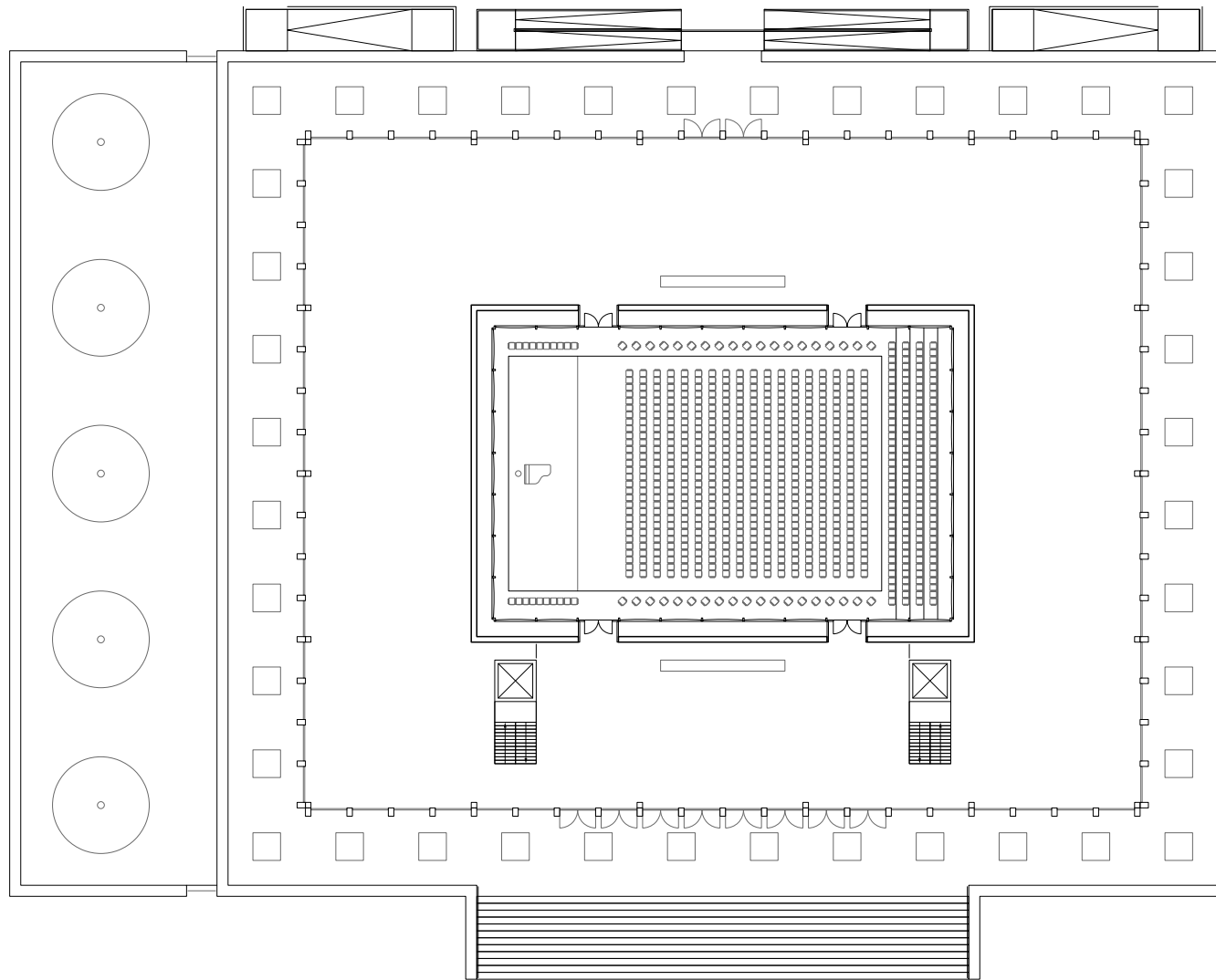
Entrances



Functional Relations



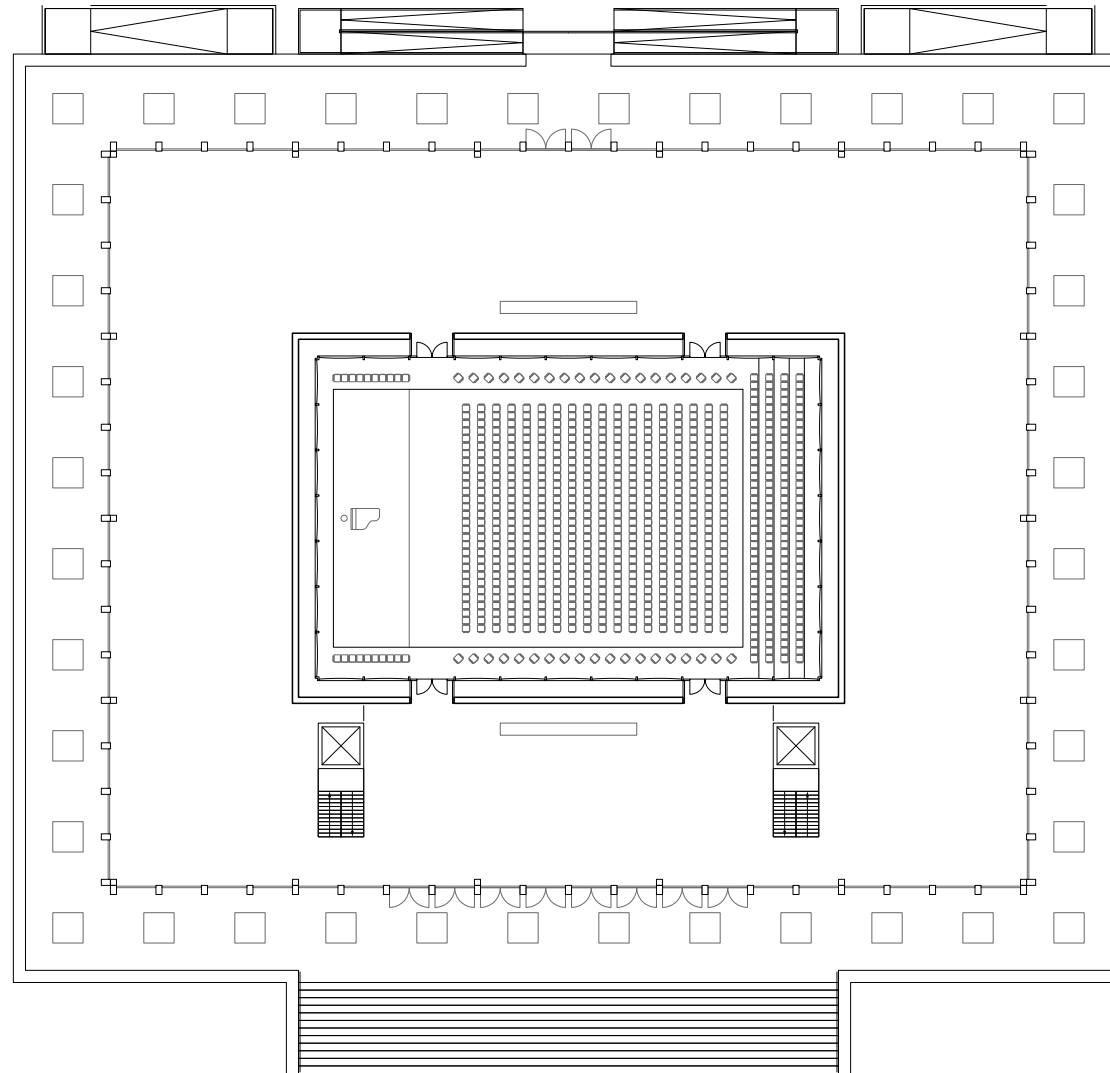
Plan -1



1:200

CP

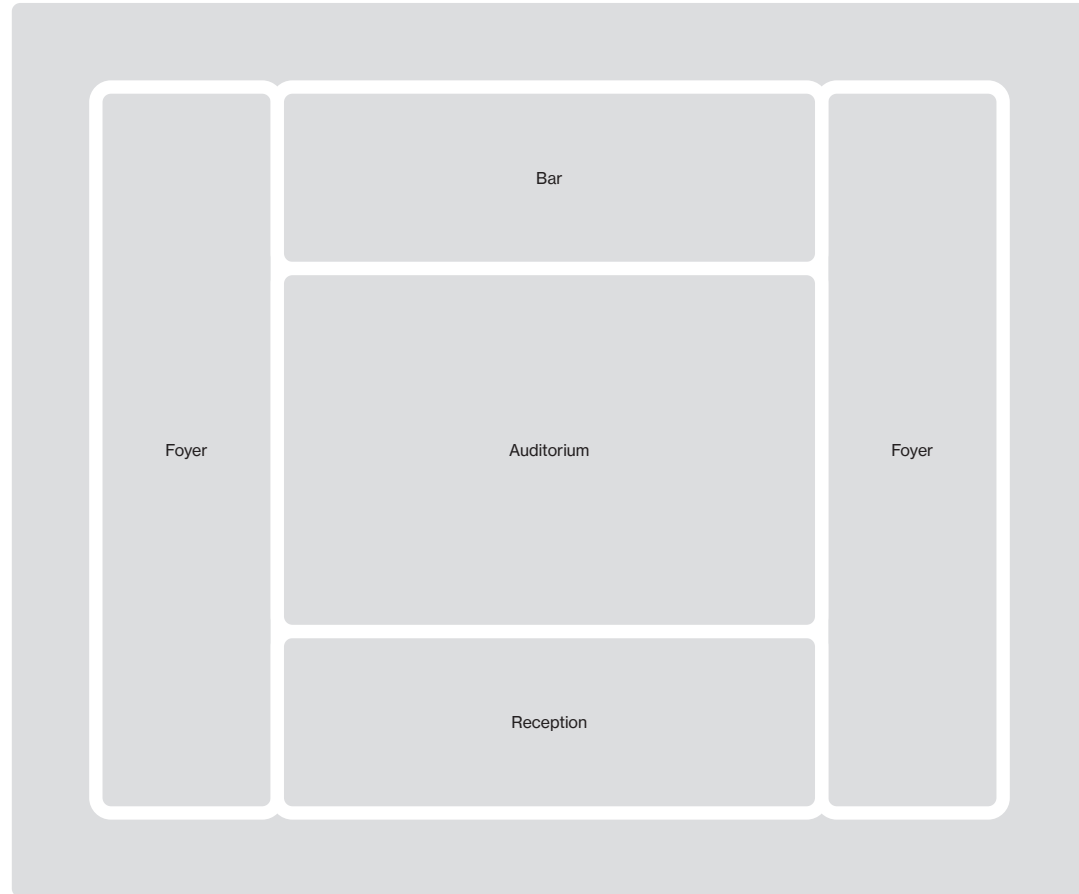
Plan 0



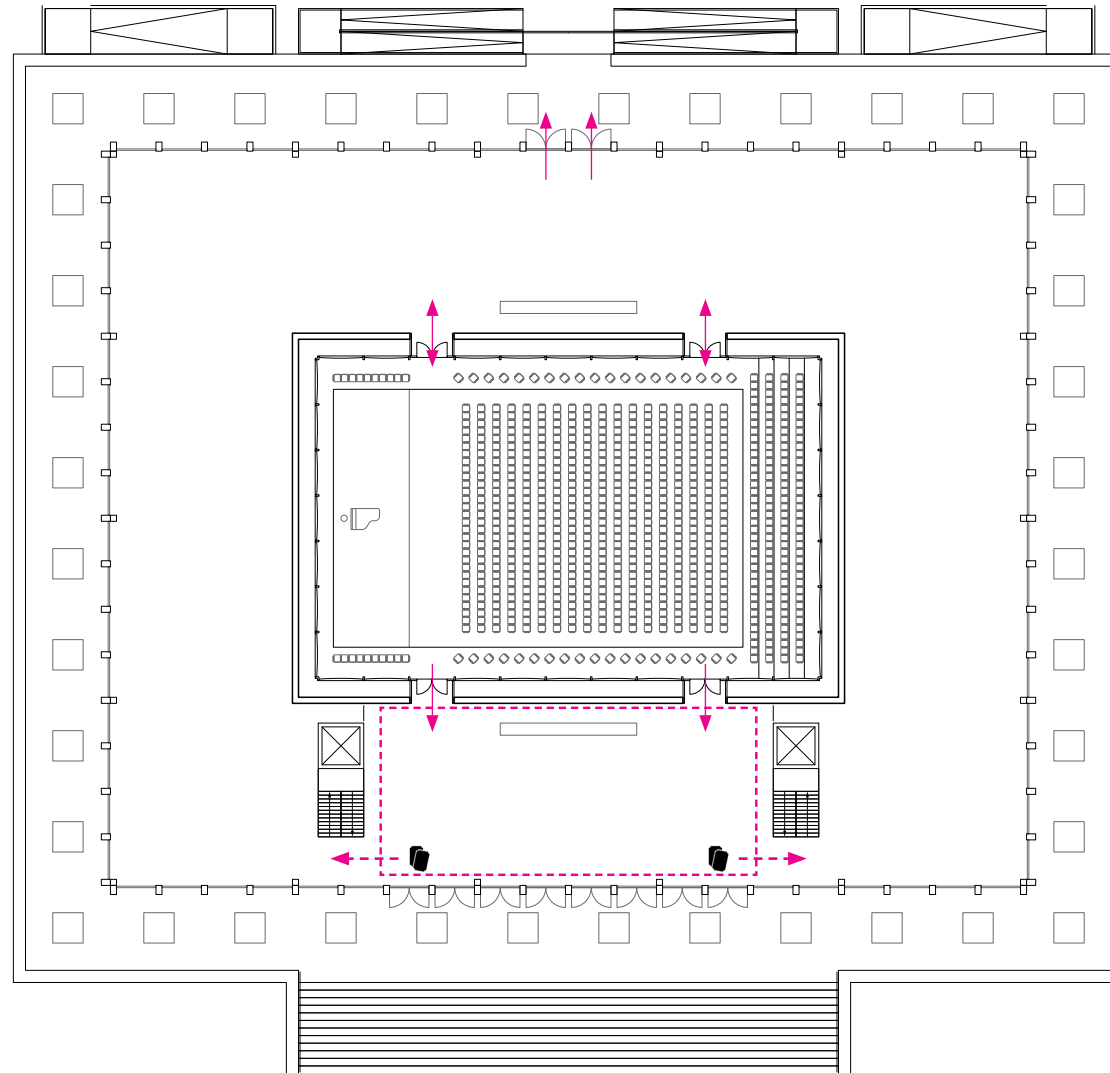
1:200

CP

Program



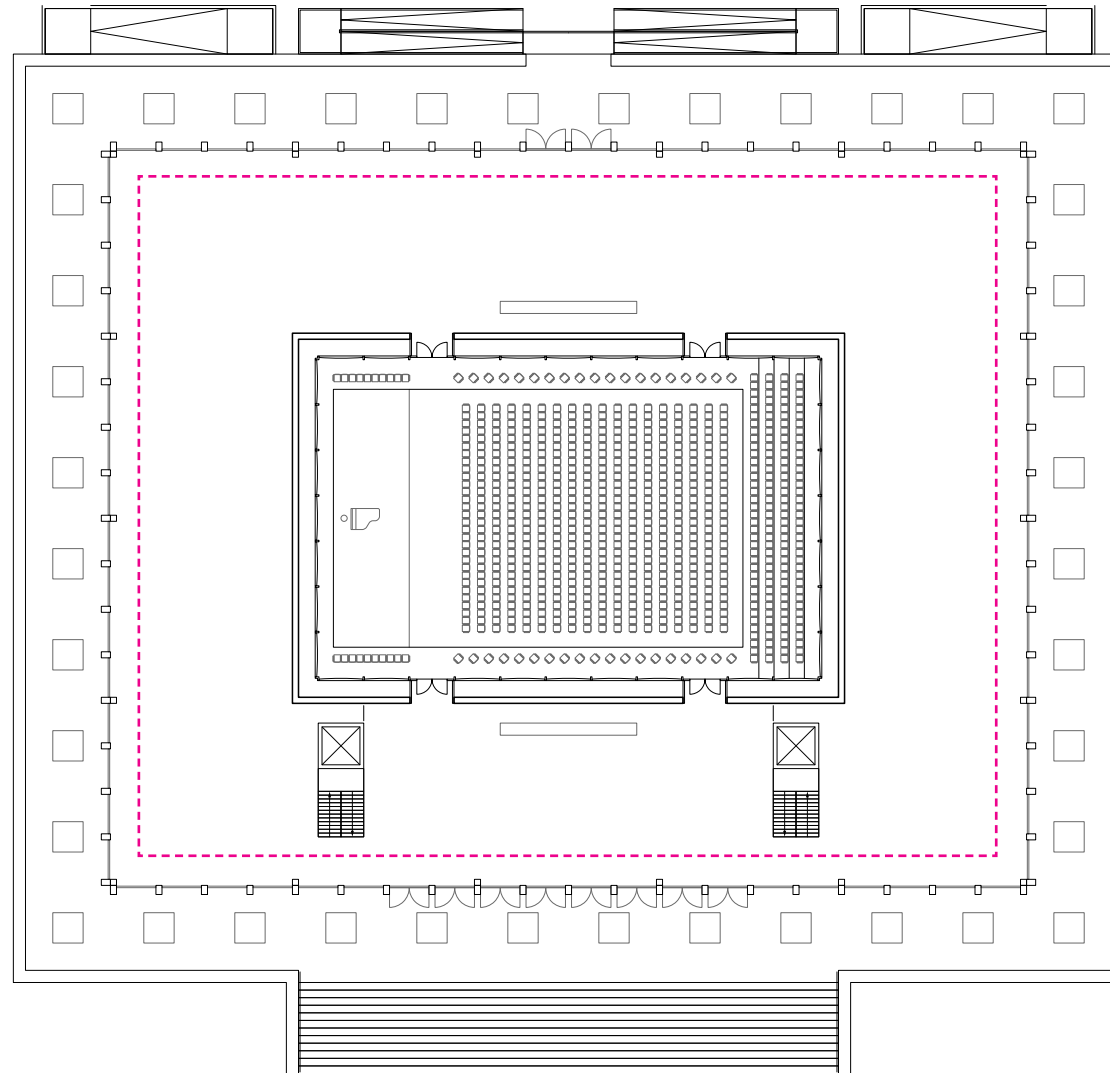
Concert



1:200

CP

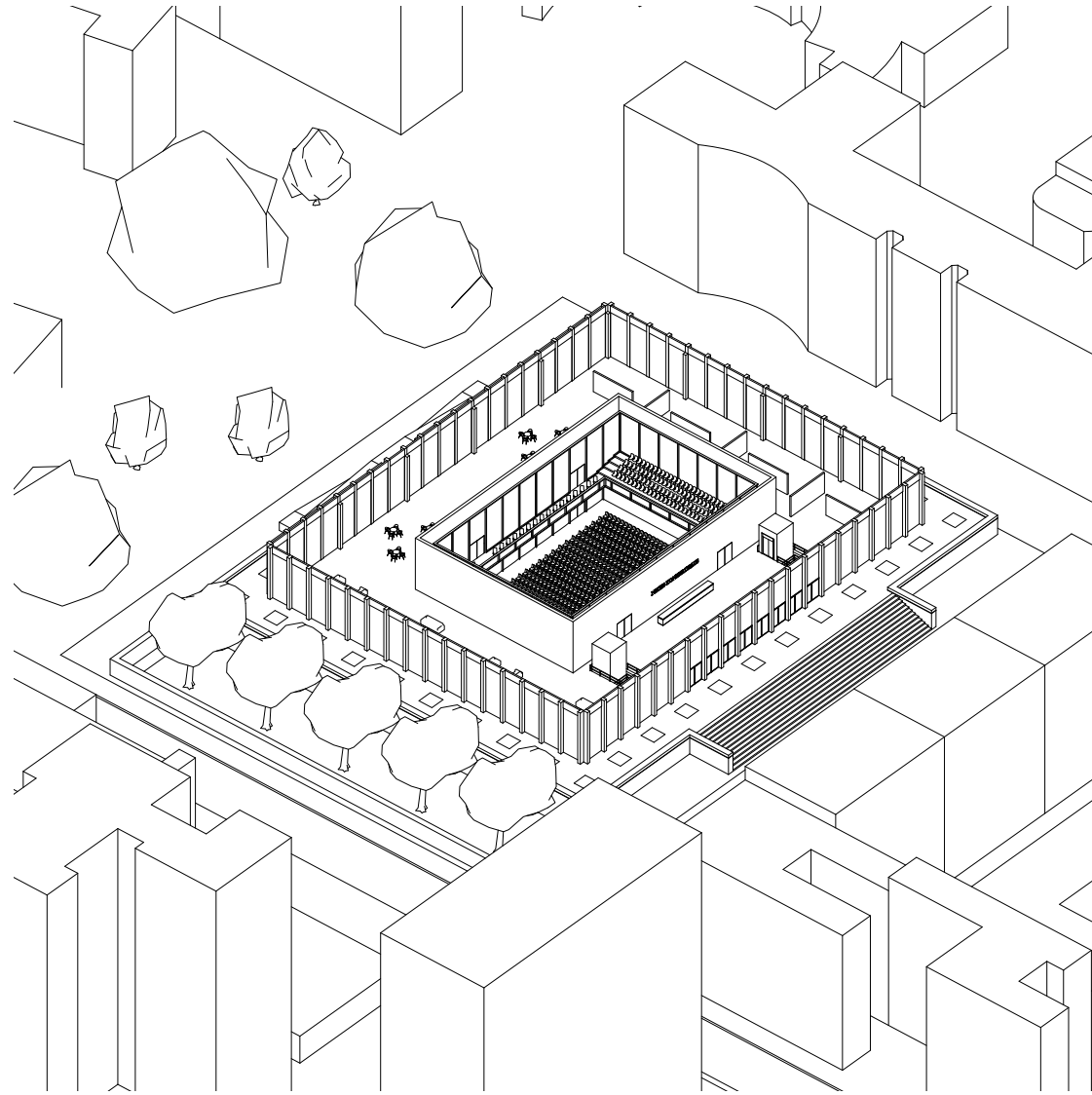
Exhibition, Lounge, Gallery, etc.



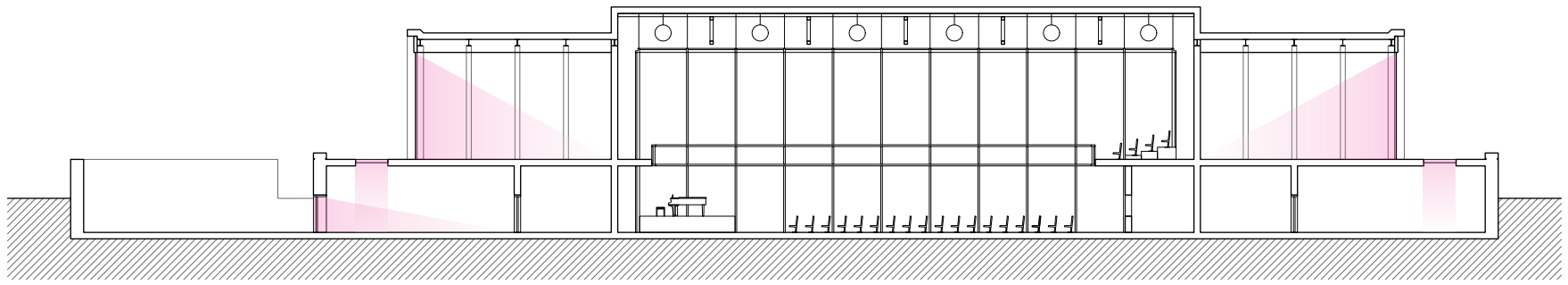
1:200

CP

Exhibition, Lounge, Gallery, etc.



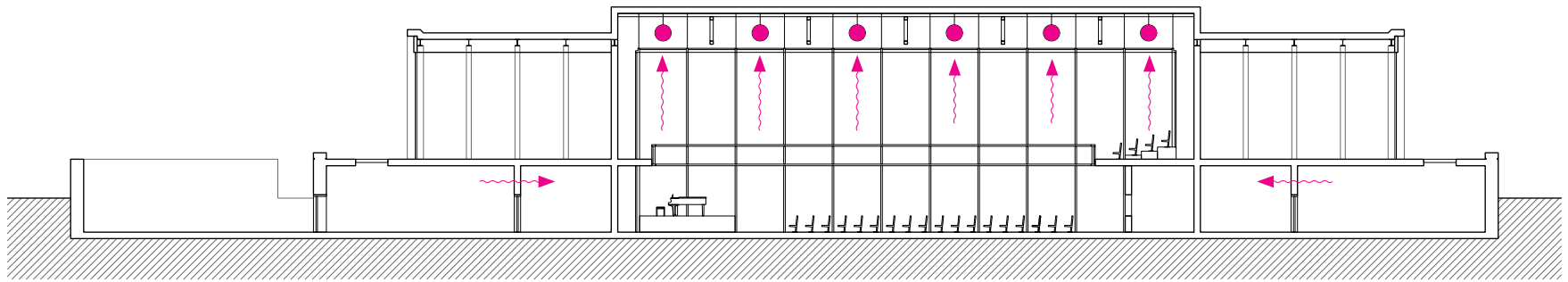
Daylight



1:200

CP

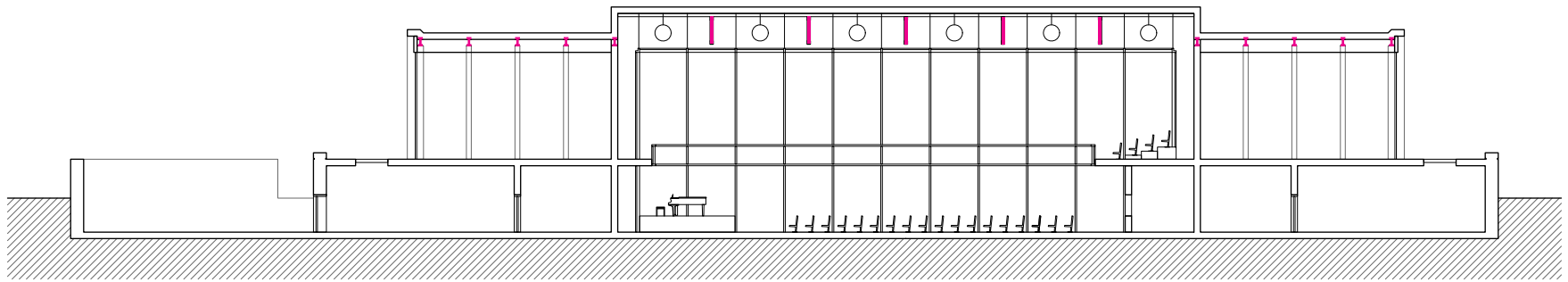
Ventilation



1:200

CP

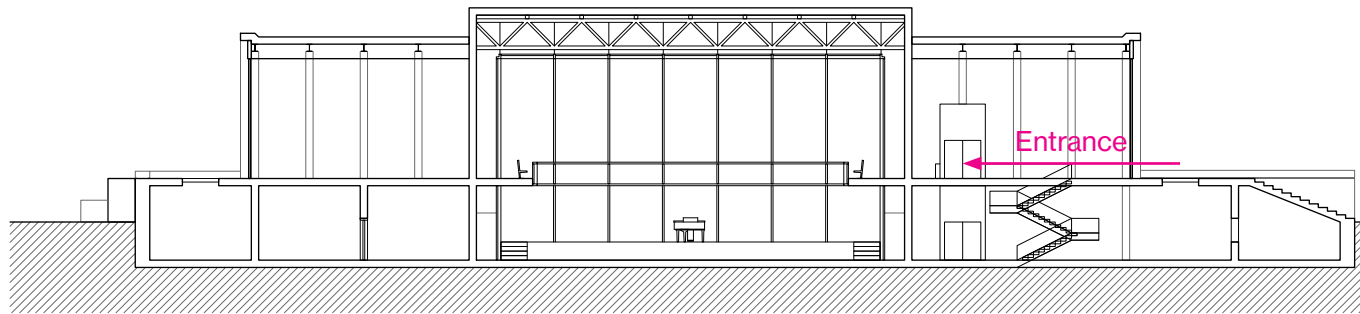
Construction



1:200

CP

Sequence



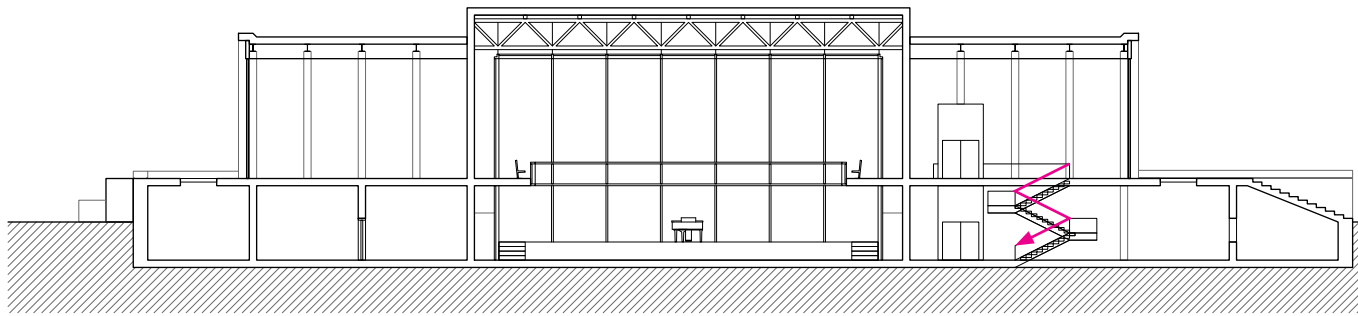
1:200



Reception



Sequence



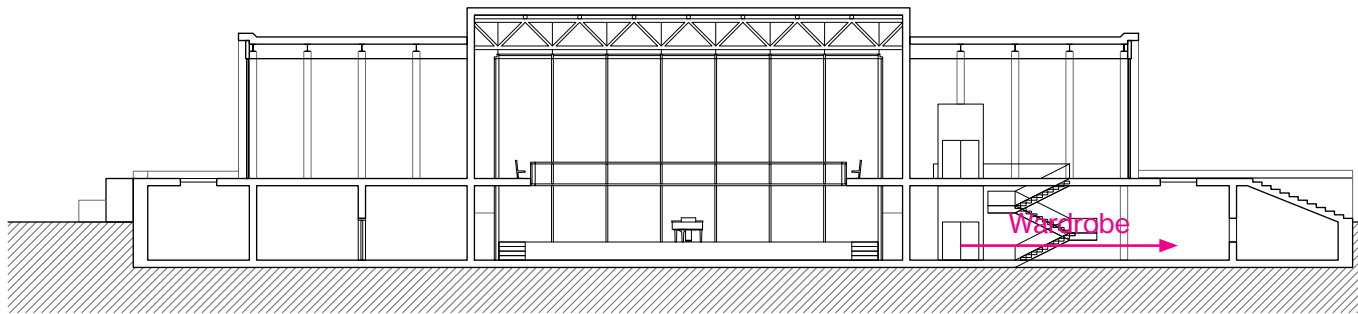
1:200

CP

Reception



Sequence



1:200

CP

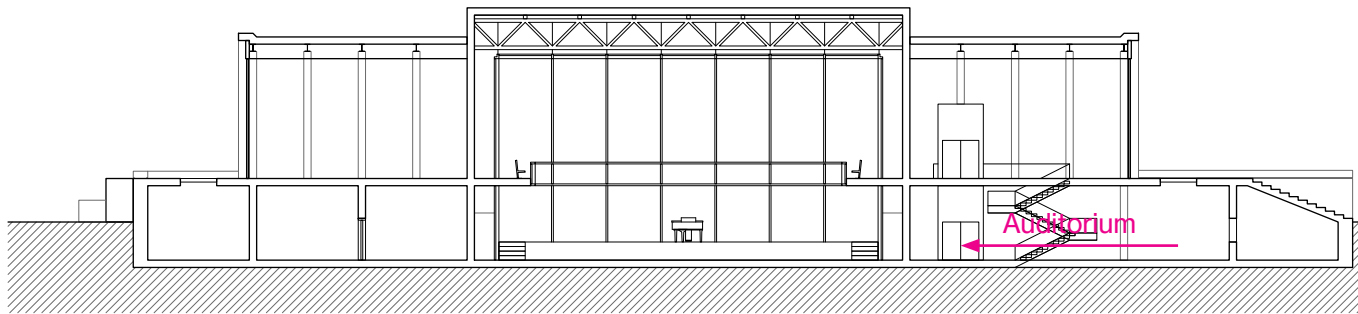
Wardrobe



1:200



Sequence



1:200

CP

Auditorium



AUDITORIUM

Baroque (1600 - 1750)



Music Room (Palace of Queluz, Portugal)

Classical (1750 - 1820)



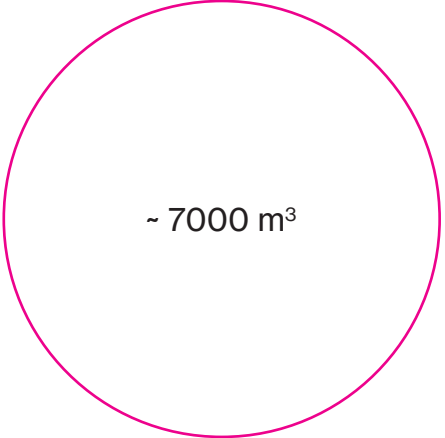
Haydnsaal (Schloss Esterházy, Austria)

Romantic (1820 - 1900)



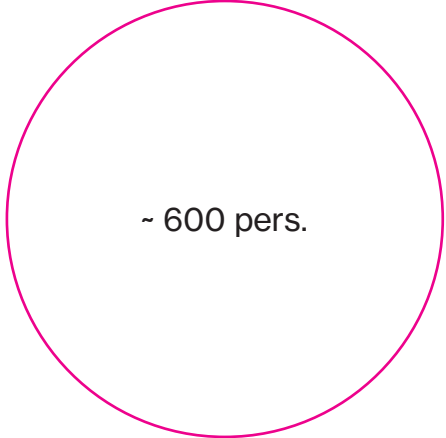
Grote Zaal (Concertgebouw, Amsterdam)

Auditorium Requirements



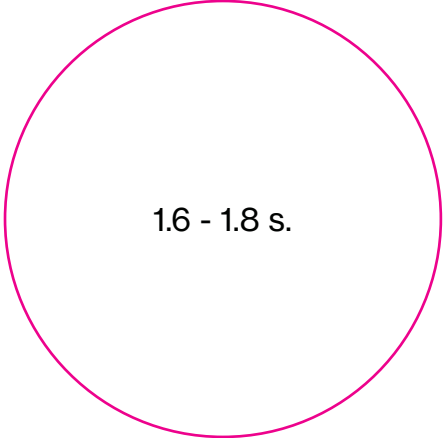
~ 7000 m³

Volume



~ 600 pers.

Capacity



1.6 - 1.8 s.

Acoustics

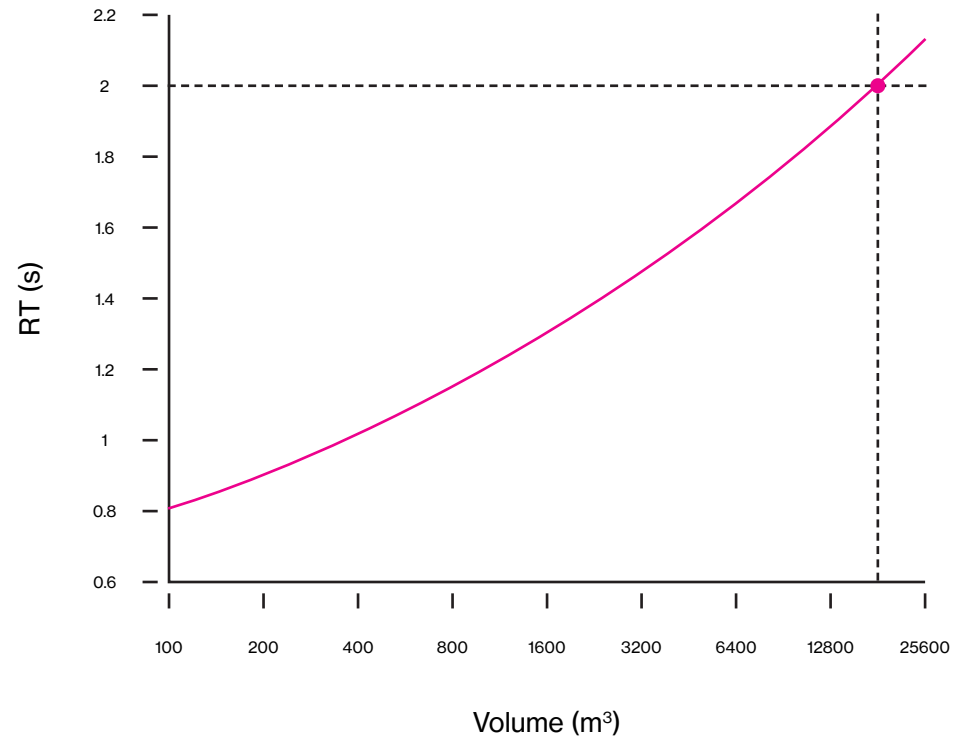
Beranek



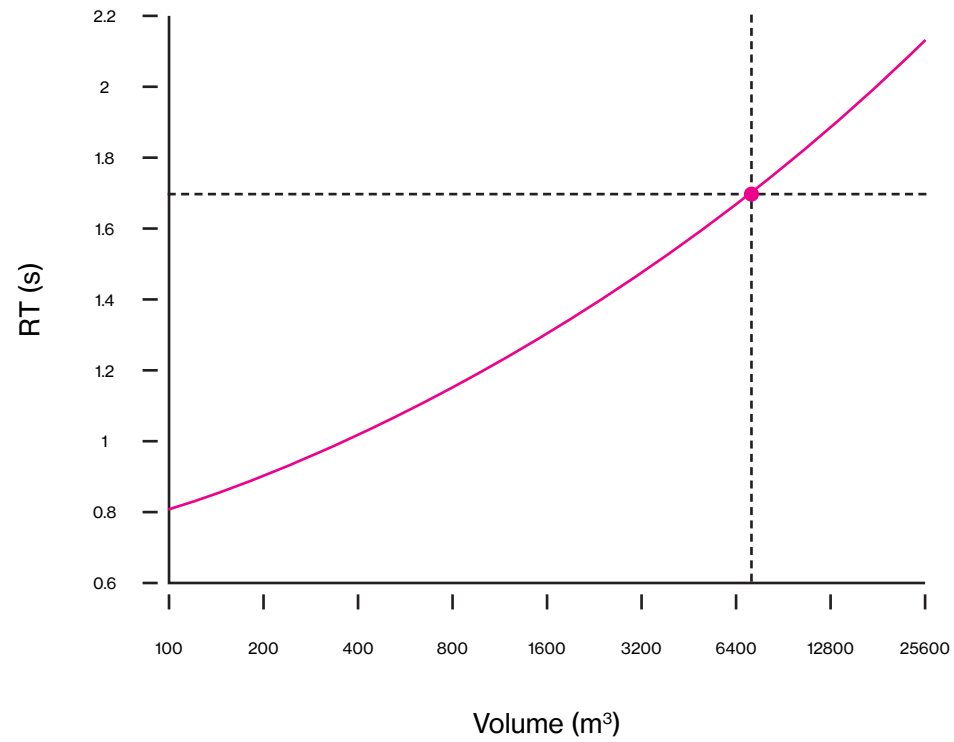
L. L. Beranek (1914-2016)

MIT Acoustics Expert

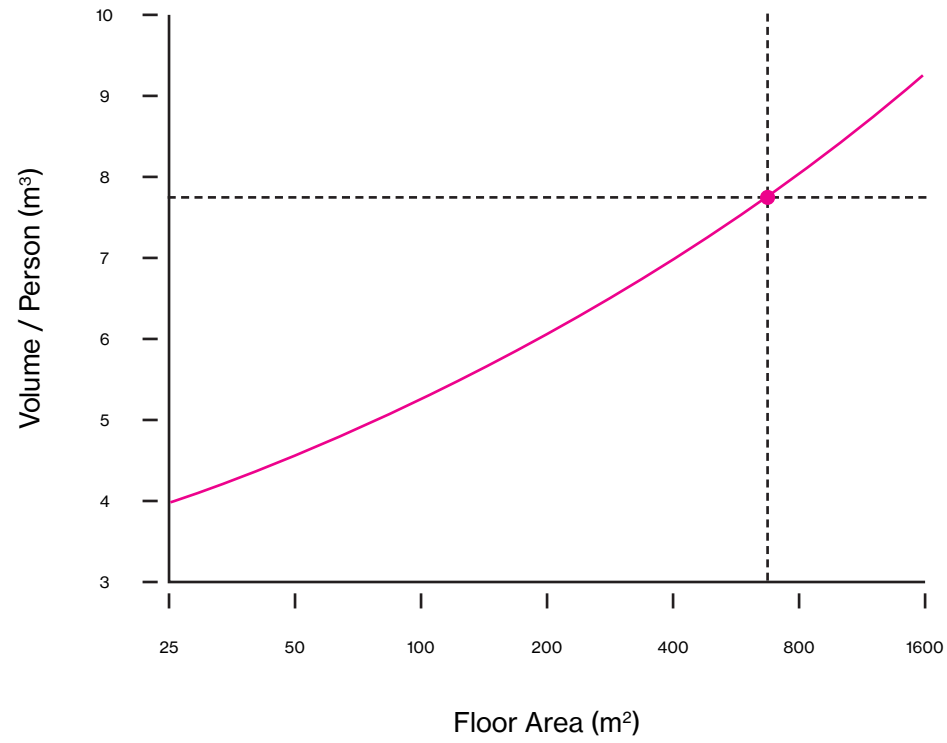
Reverberation Time: Philharmonic Halls



Reverberation Time: Chamber Music Halls



Capacity



References

Hall	Shape	Podium	Inclined	V (m ³)	N (seats)	V/N	G (dB)	EDT (s)	T ₂₀ (s)
Blaibach	Rect.	0	Y	1360	200	6.8	13.1	1.7	1.5
Irenesaal	Rect.	0	Y	1800	180	10.0	10.7	1.3	1.2
Haydnsaal	Rect.	1.0	N	6800	670	10.1	9.1	1.9	1.7
Mozartsaal	Pent.	0.8	Y	5500	750	7.3	11.9	1.5	1.6
Mozartsaal	Rect.	0.8	N	4215	705	6.0	11.1	1.4	1.5
Prinz.	Fan	0.4	Y	7000	1080	6.5	9.8	1.8	1.6
Franz-Liszt	Rect.	1.1	N	4450	590	7.5	11.5	1.7	1.8

References

Hall	Shape	Podium	Inclined	V (m ³)	N (seats)	V/N	G (dB)	EDT (s)	T ₂₀ (s)
Blaibach	Rect.	0	Y	1360	200	6.8	13.1	1.7	1.5
Irenesaal	Rect.	0	Y	1800	180	10.0	10.7	1.3	1.2
Haydnsaal	Rect.	1.0	N	6800	670	10.1	9.1	1.9	1.7
Mozartsaal	Pent.	0.8	Y	5500	750	7.3	11.9	1.5	1.6
Mozartsaal	Rect.	0.8	N	4215	705	6.0	11.1	1.4	1.5
Prinz.	Fan	0.4	Y	7000	1080	6.5	9.8	1.8	1.6
Franz-Liszt	Rect.	1.1	N	4450	590	7.5	11.5	1.7	1.8

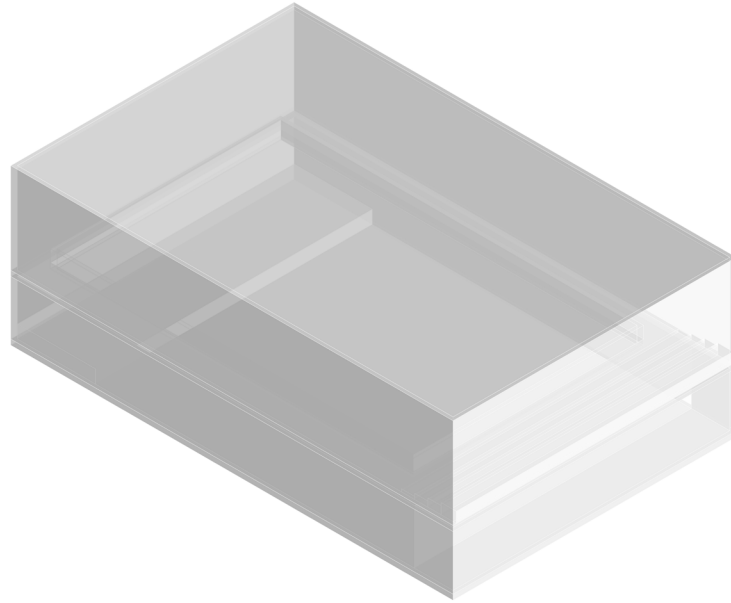
Berlin Philharmonic



Nagata Acoustics



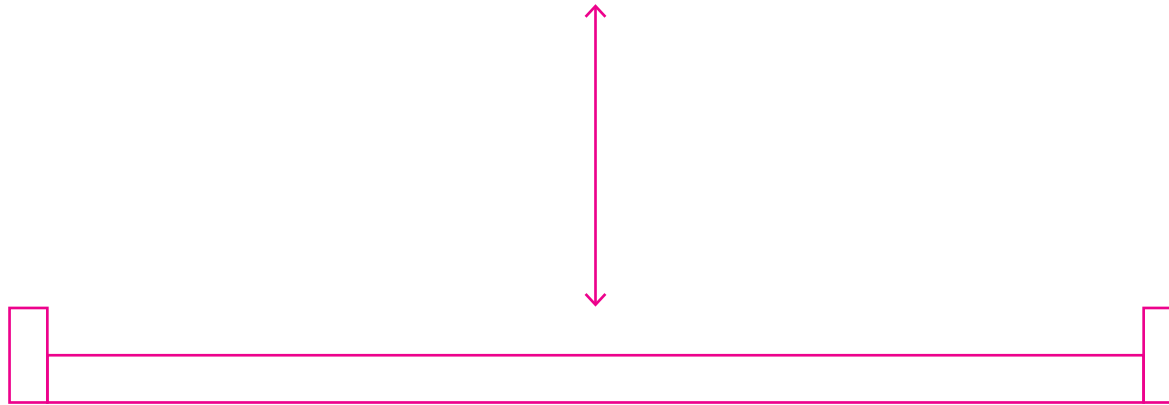
Acoustics



Simulation

[VIDEO]

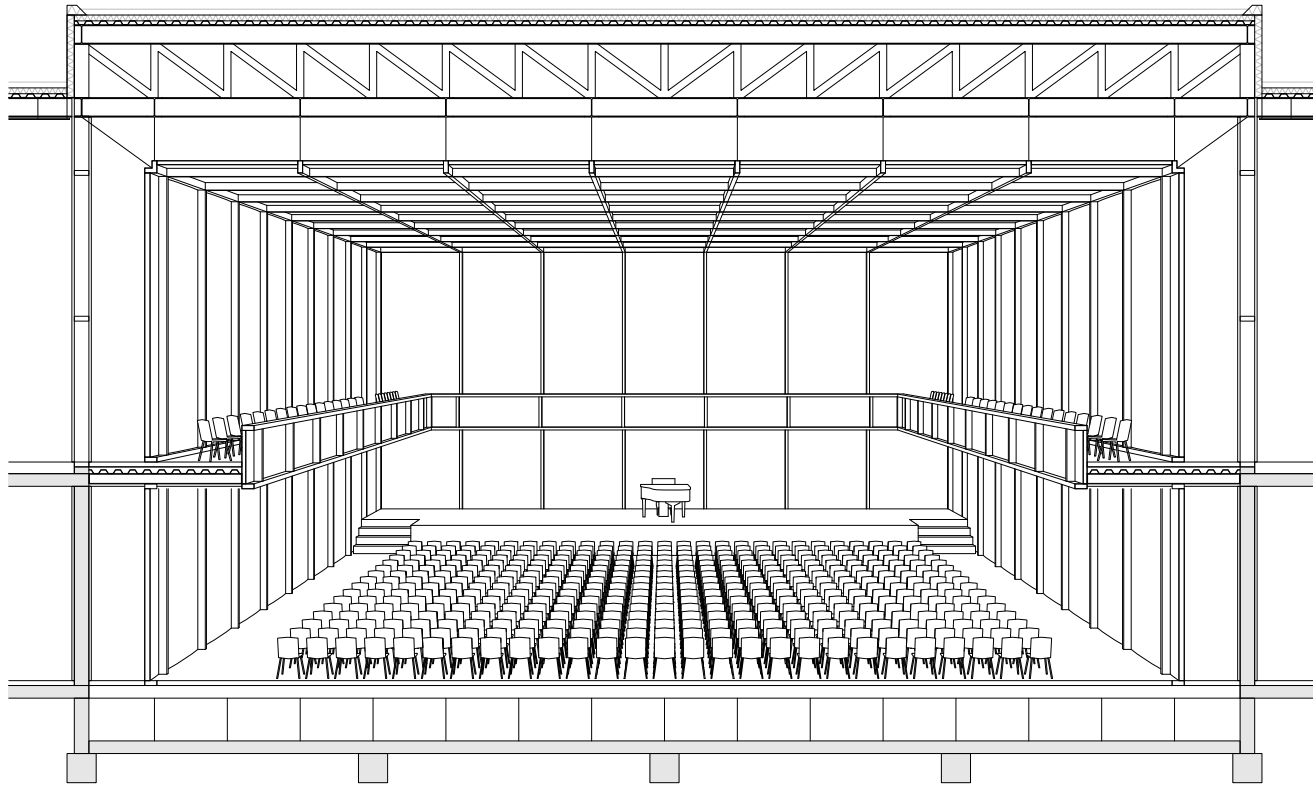
Flat



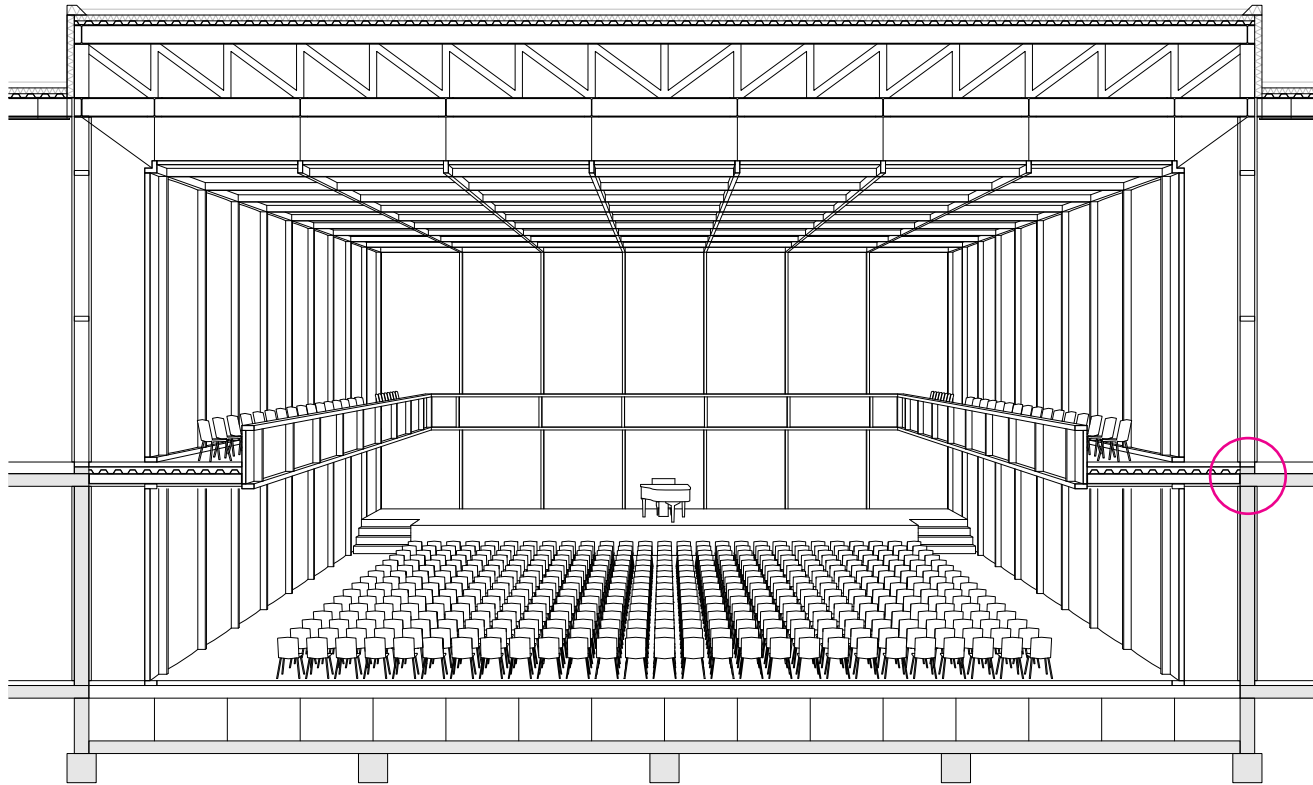
Curved



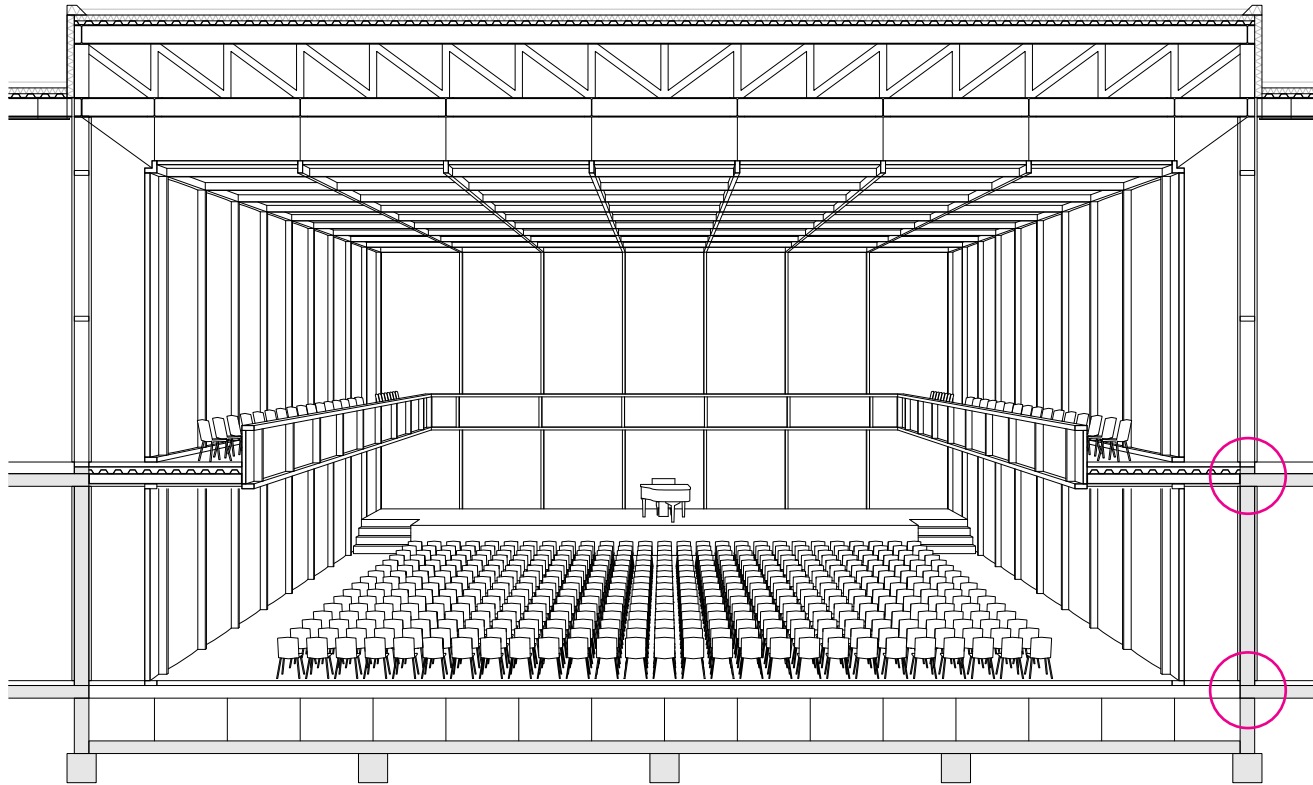
Technical Section



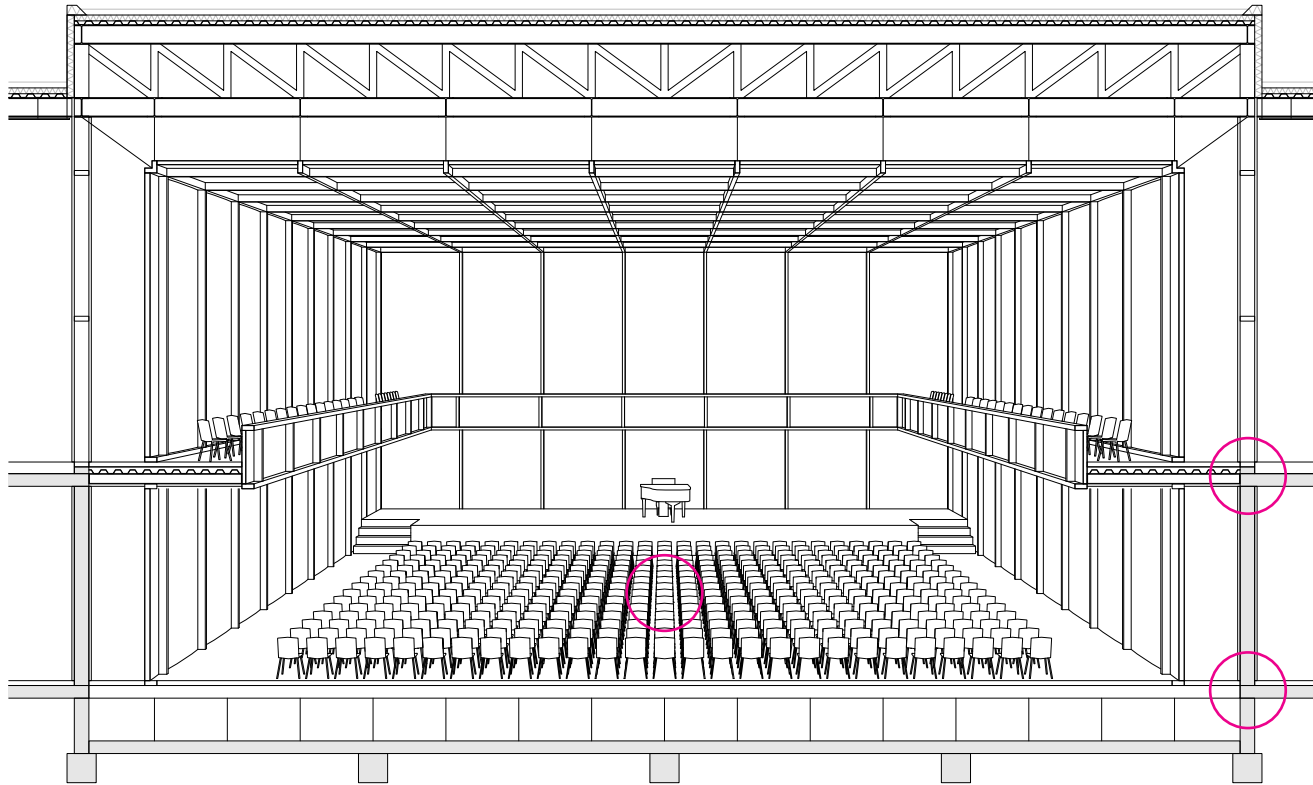
Technical Section



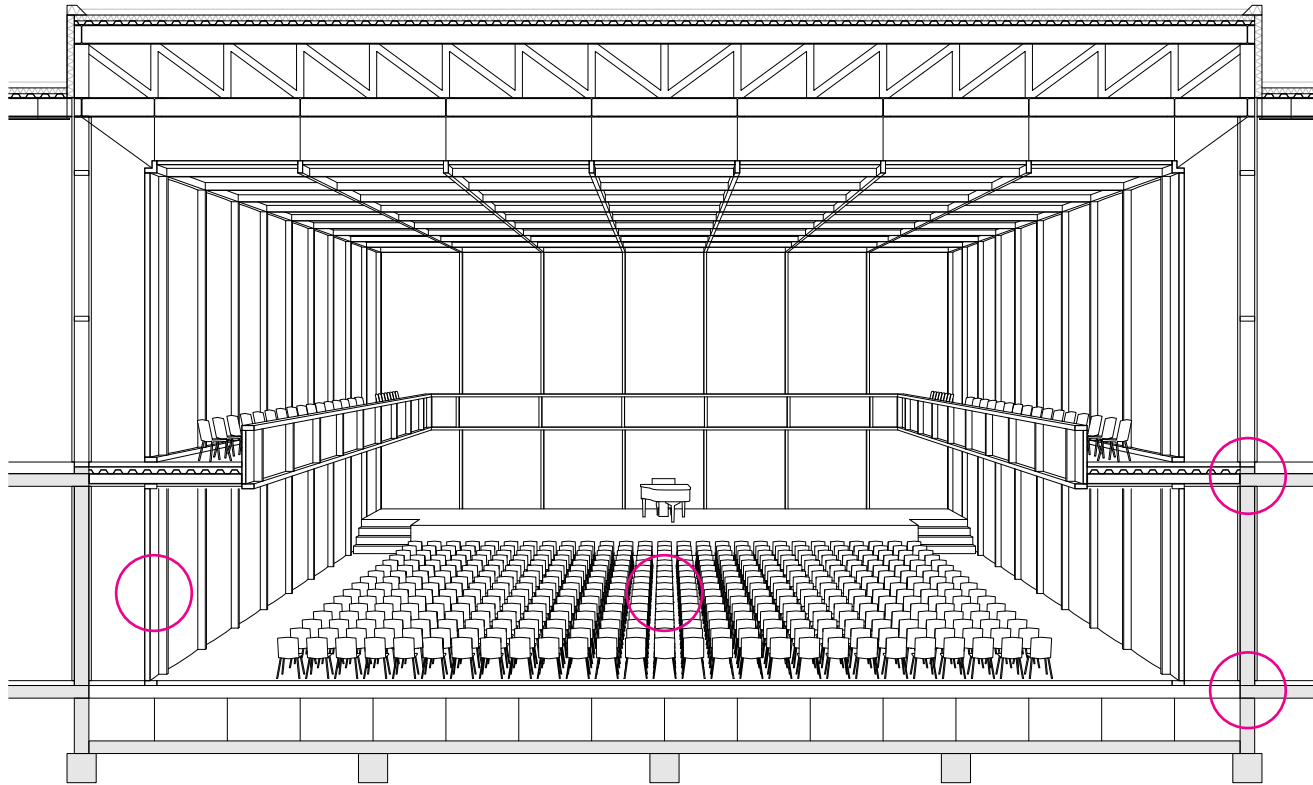
Technical Section



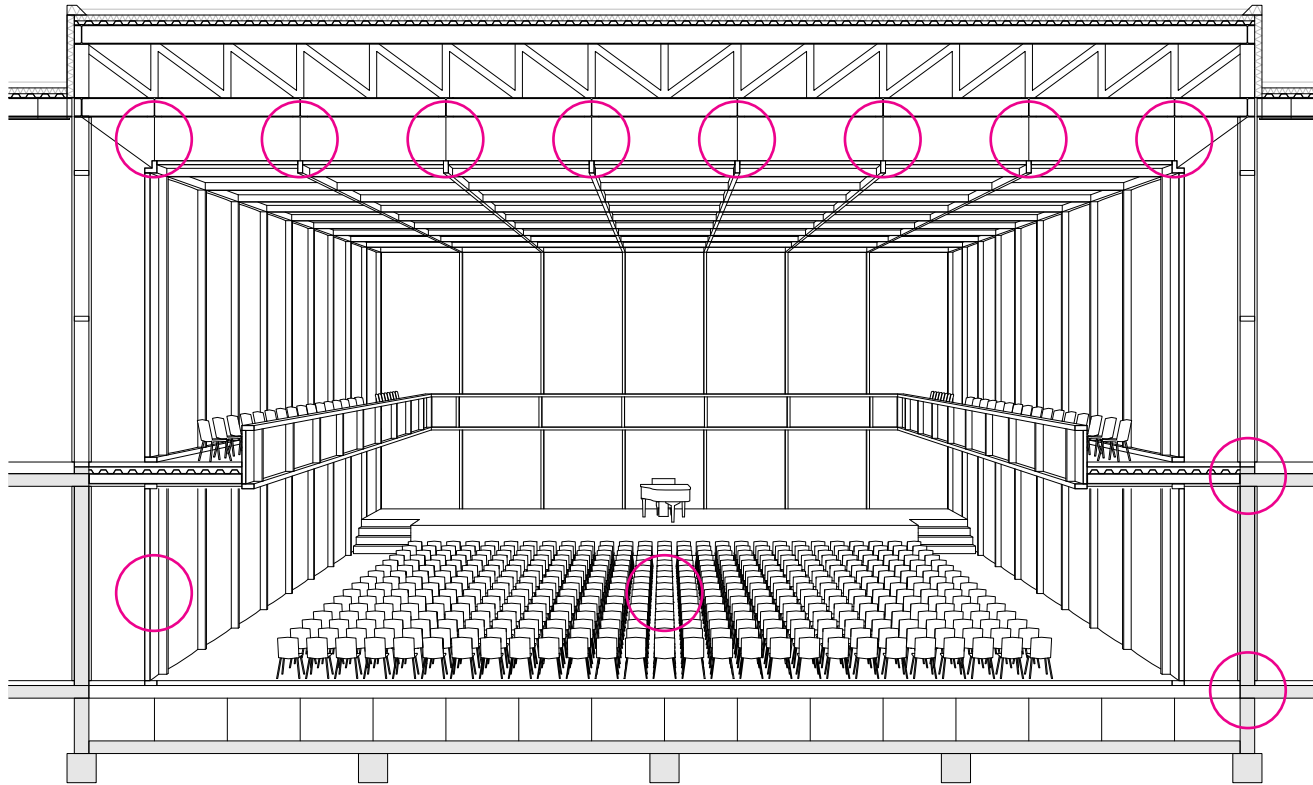
Technical Section



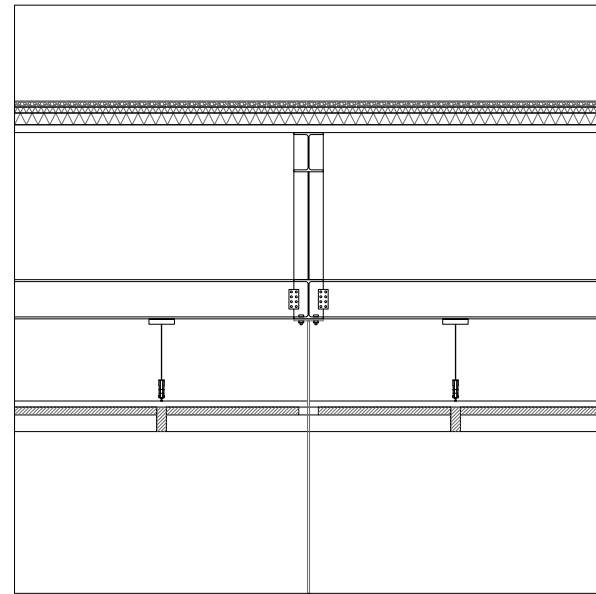
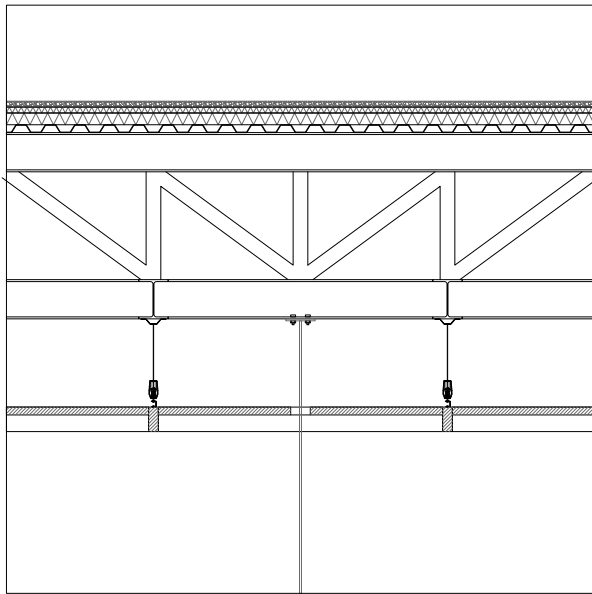
Technical Section



Technical Section



Technical Section

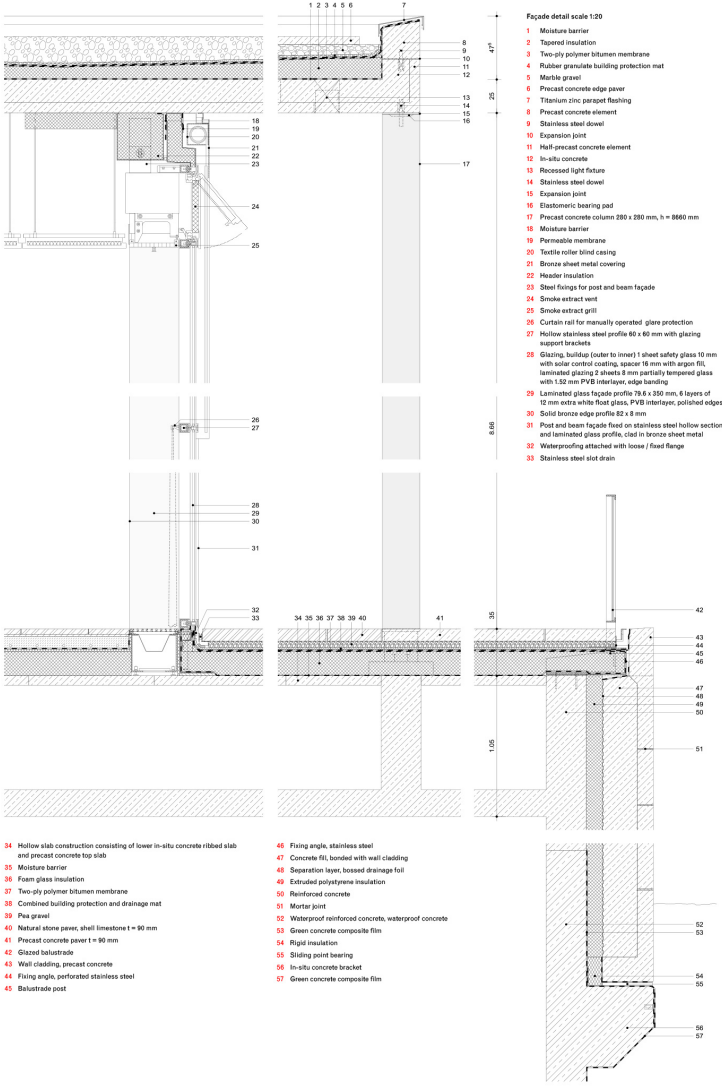


MATERIALS

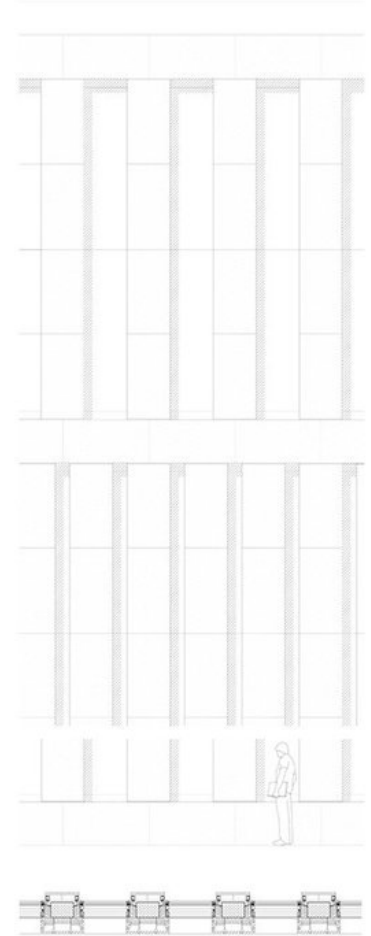
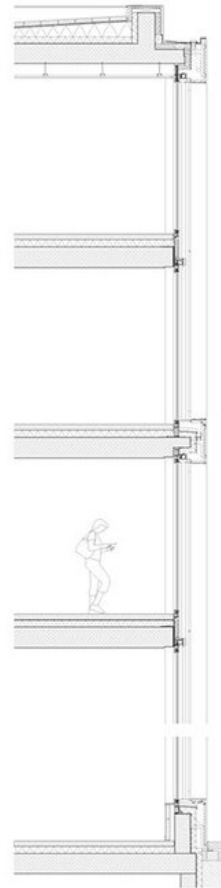
Berlin



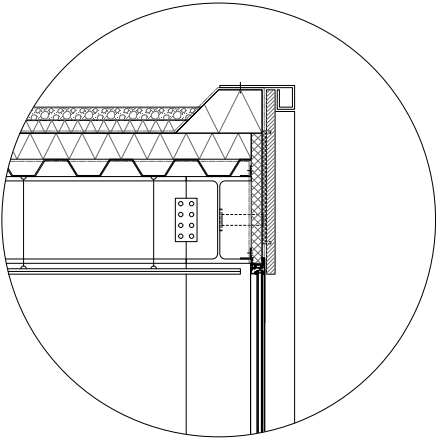
James Simon Gallery



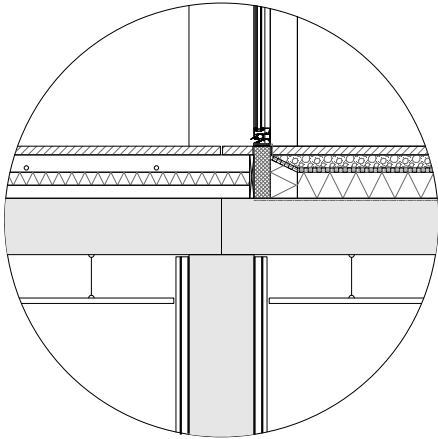
Jacob-und-Wilhelm-Grimm-Zentrum



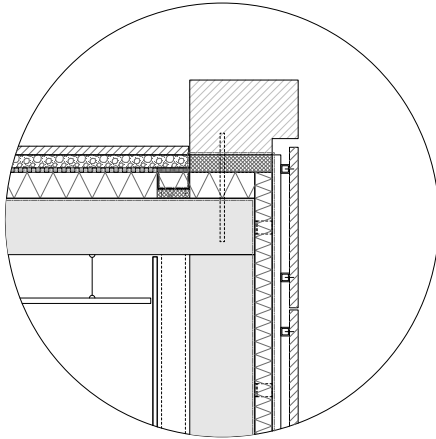
Details



Roof



Floor



Plaza

RESULT

Overview



Front Facade



Courtyard



Auditorium



THANK YOU