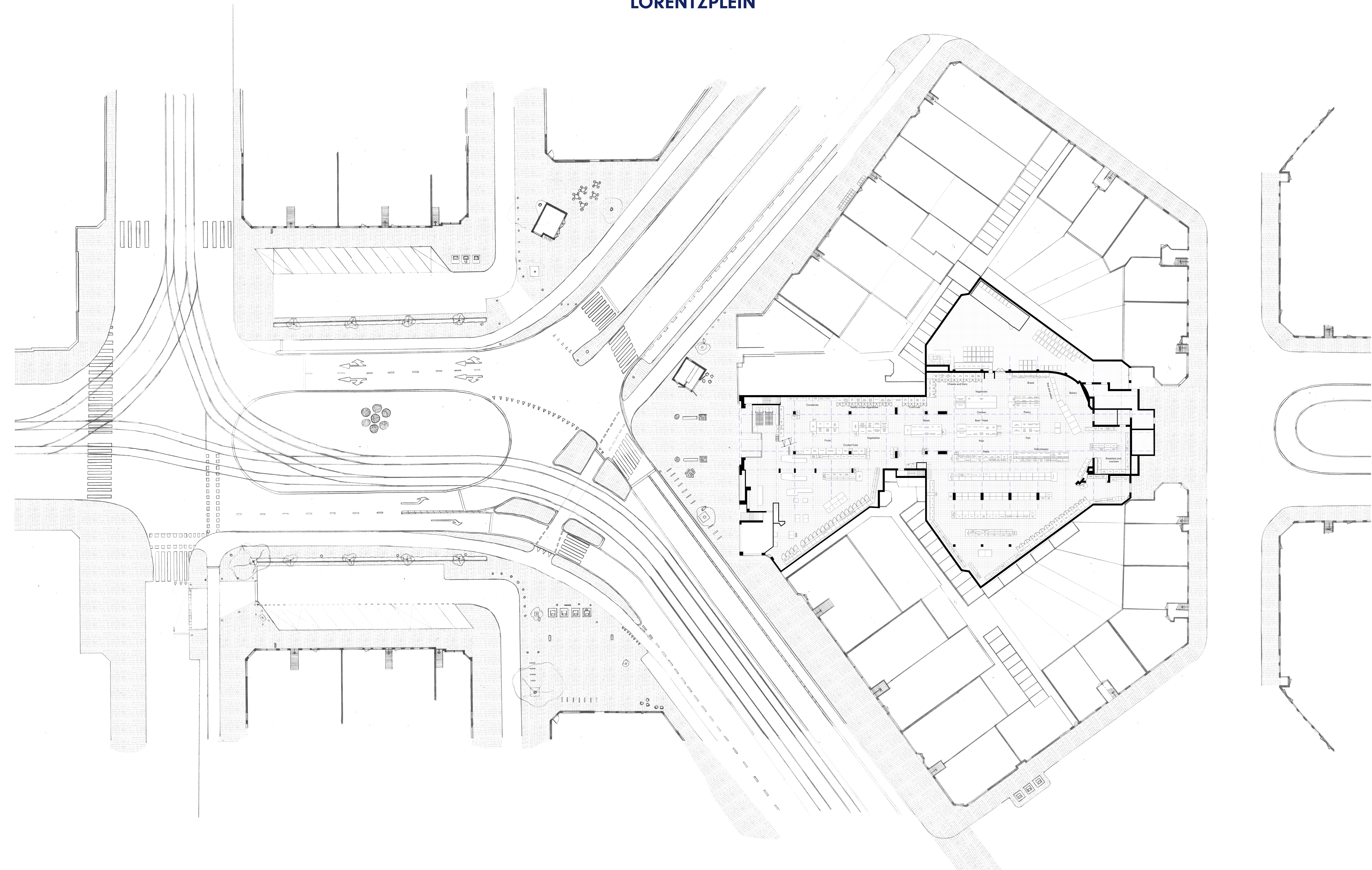
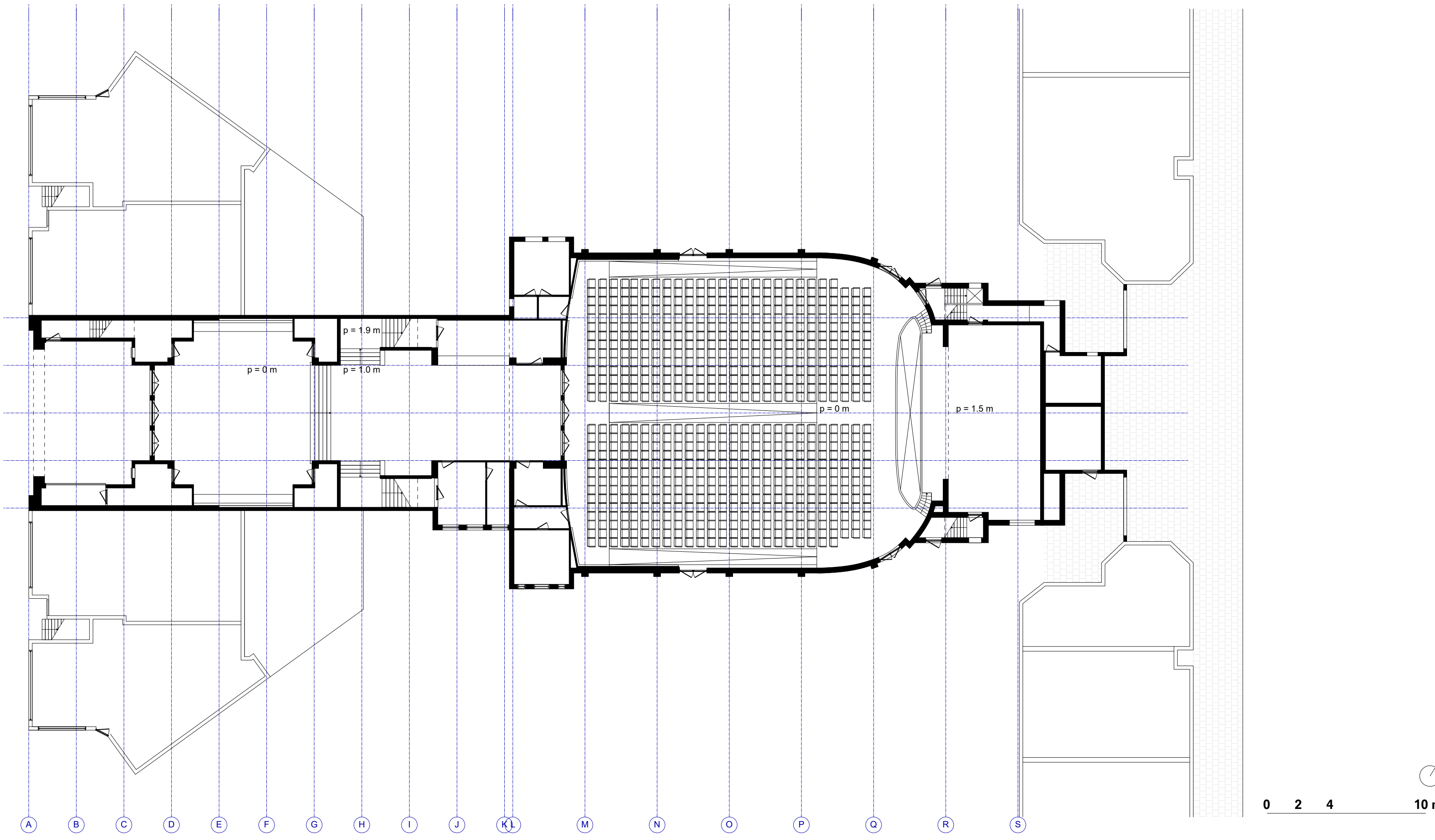
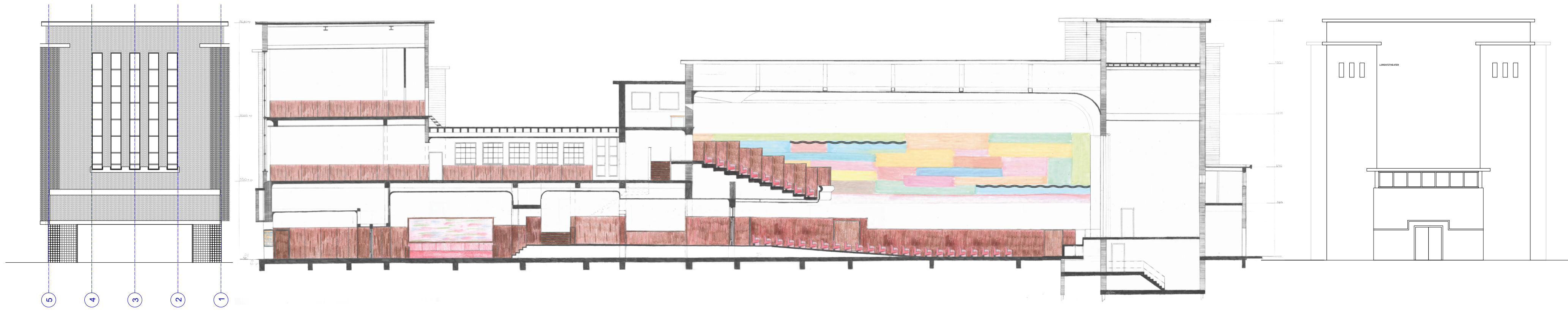


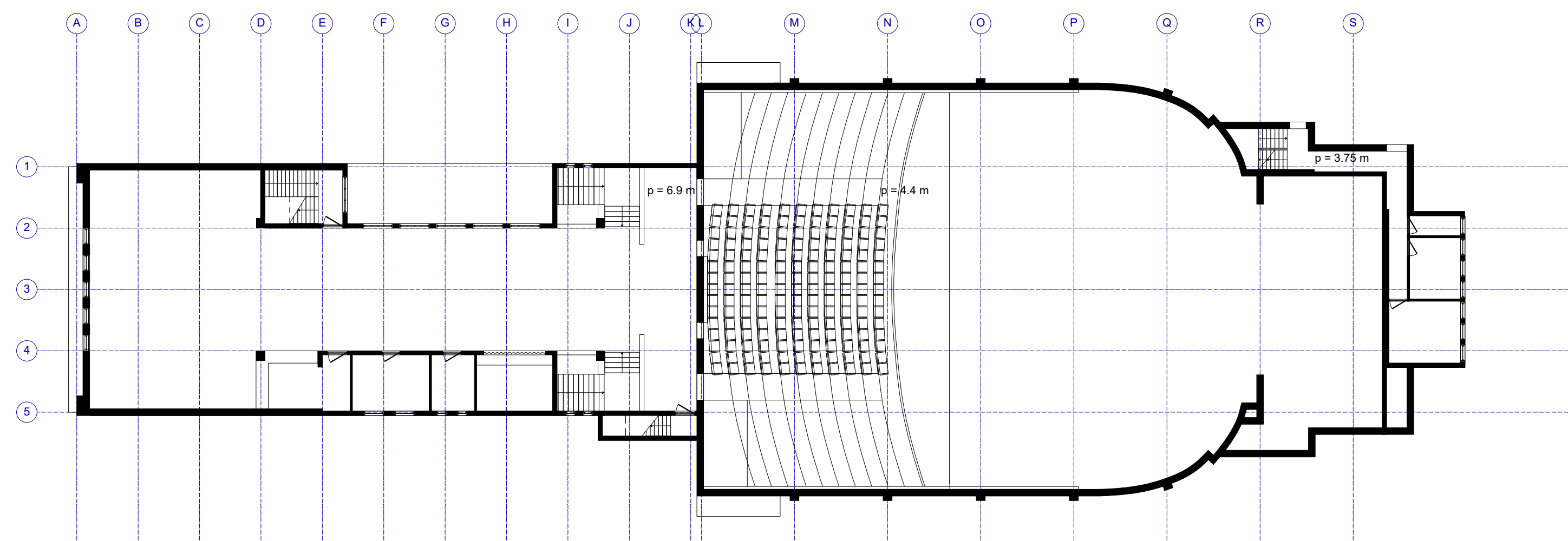
2025 SITUATION
LORENTZPLEIN



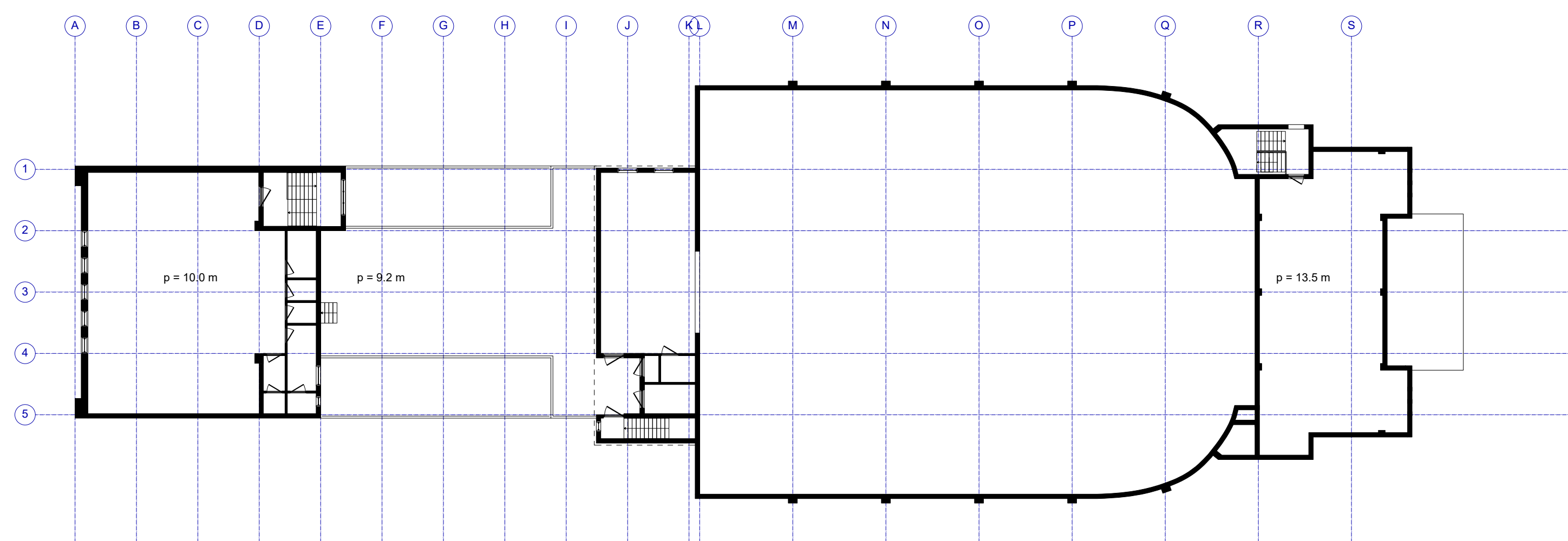
1933 SITUATION
Rembrandt Theater



GROUND FLOOR

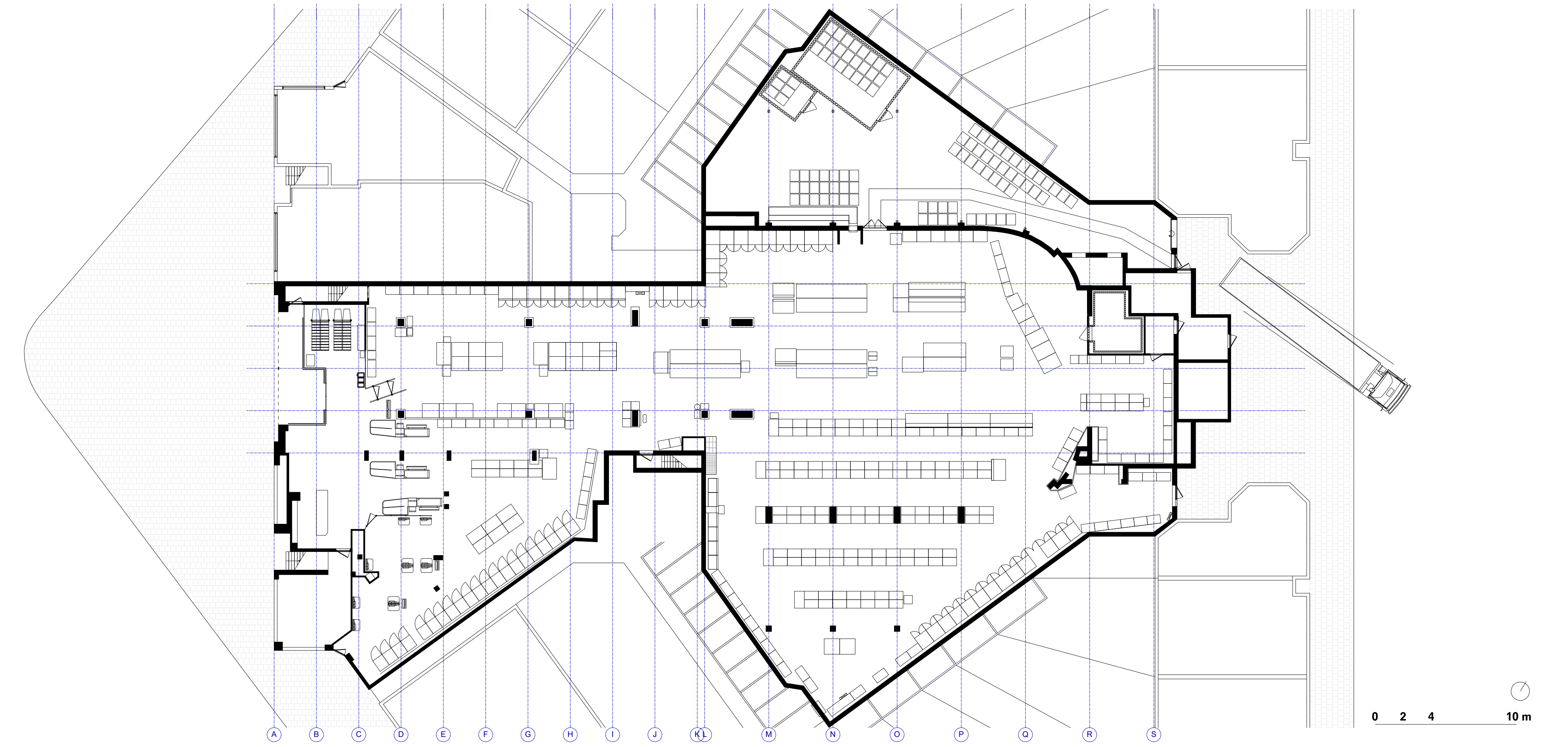
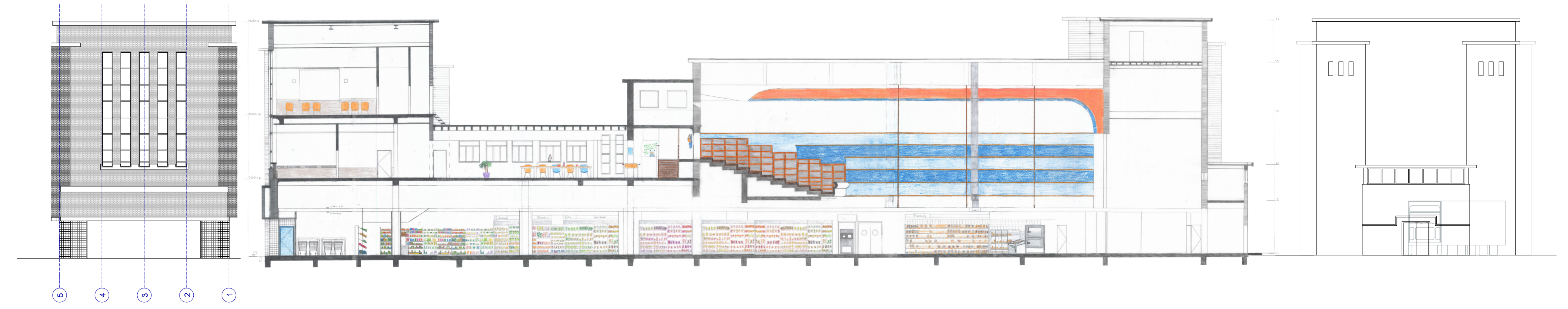


FIRST FLOOR

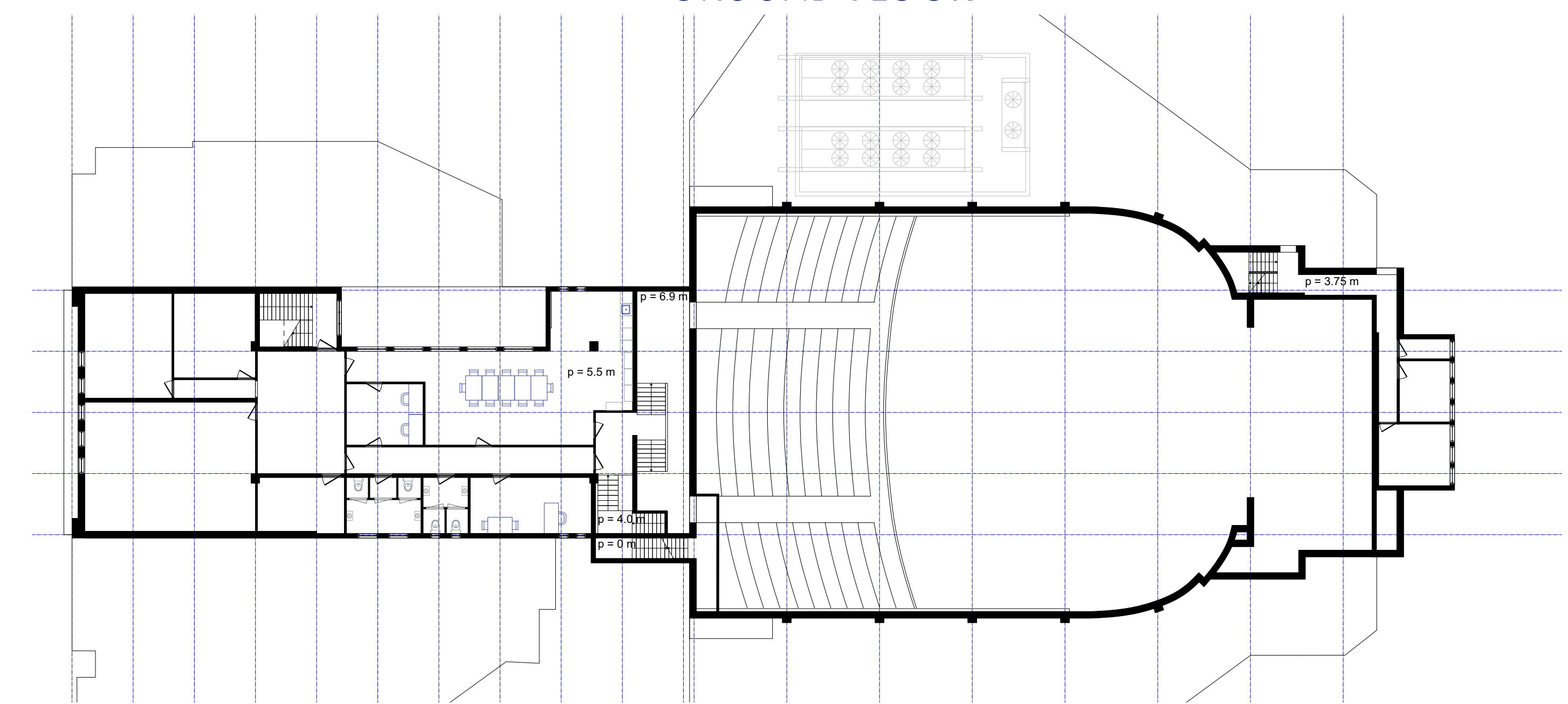


SECOND FLOOR

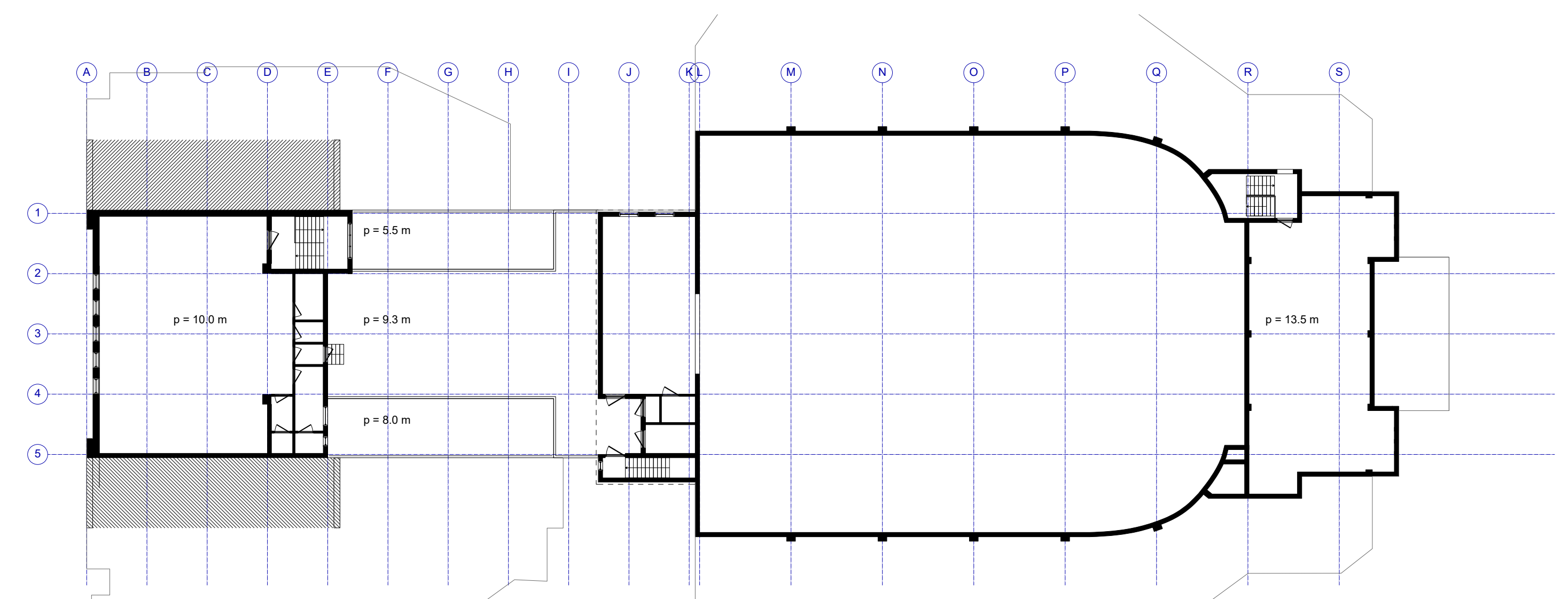
2025 SITUATION
Albert Heijn Laak Centraal



GROUND FLOOR

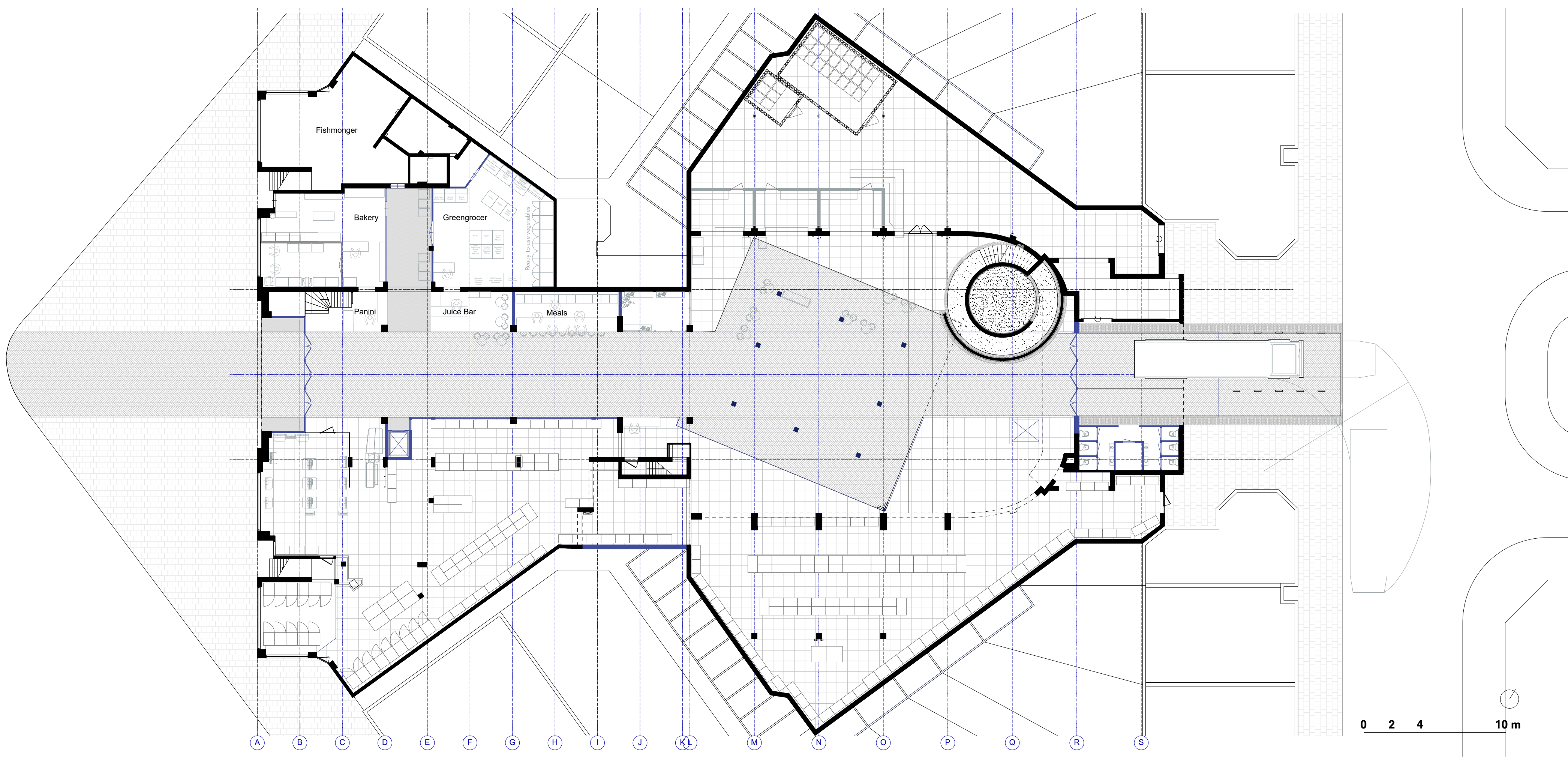
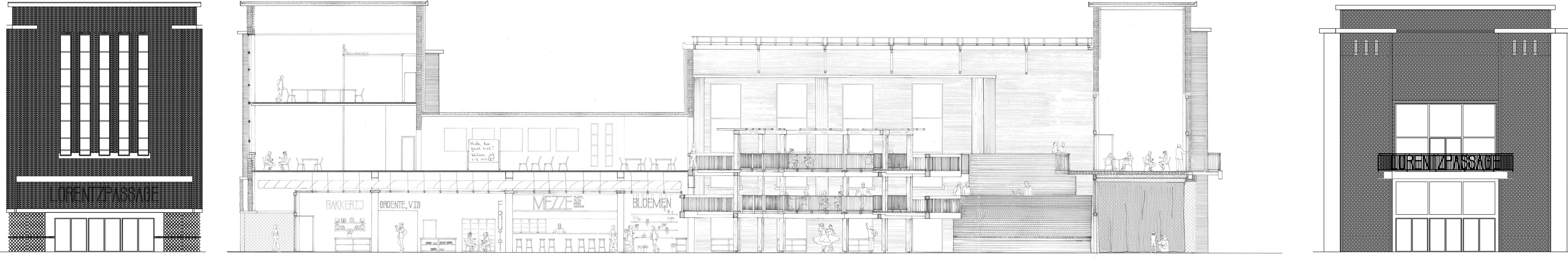


FIRST FLOOR

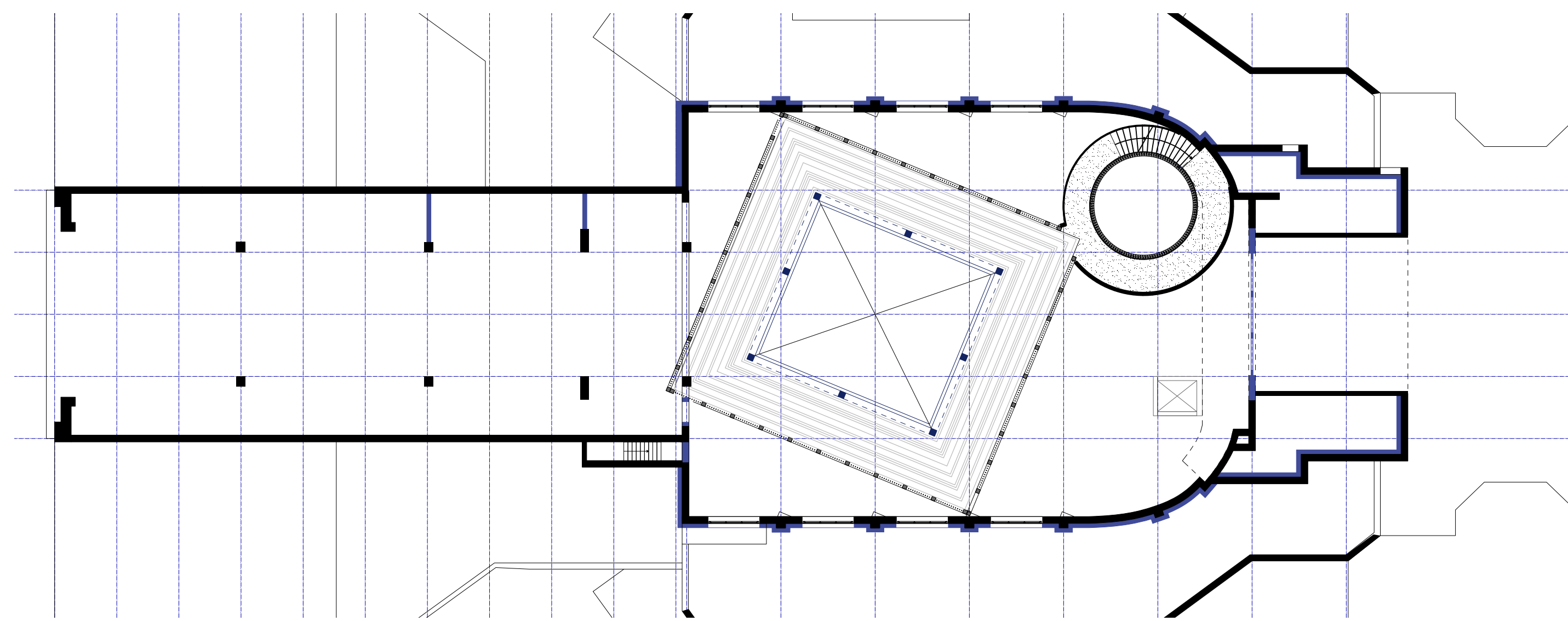


SECOND FLOOR

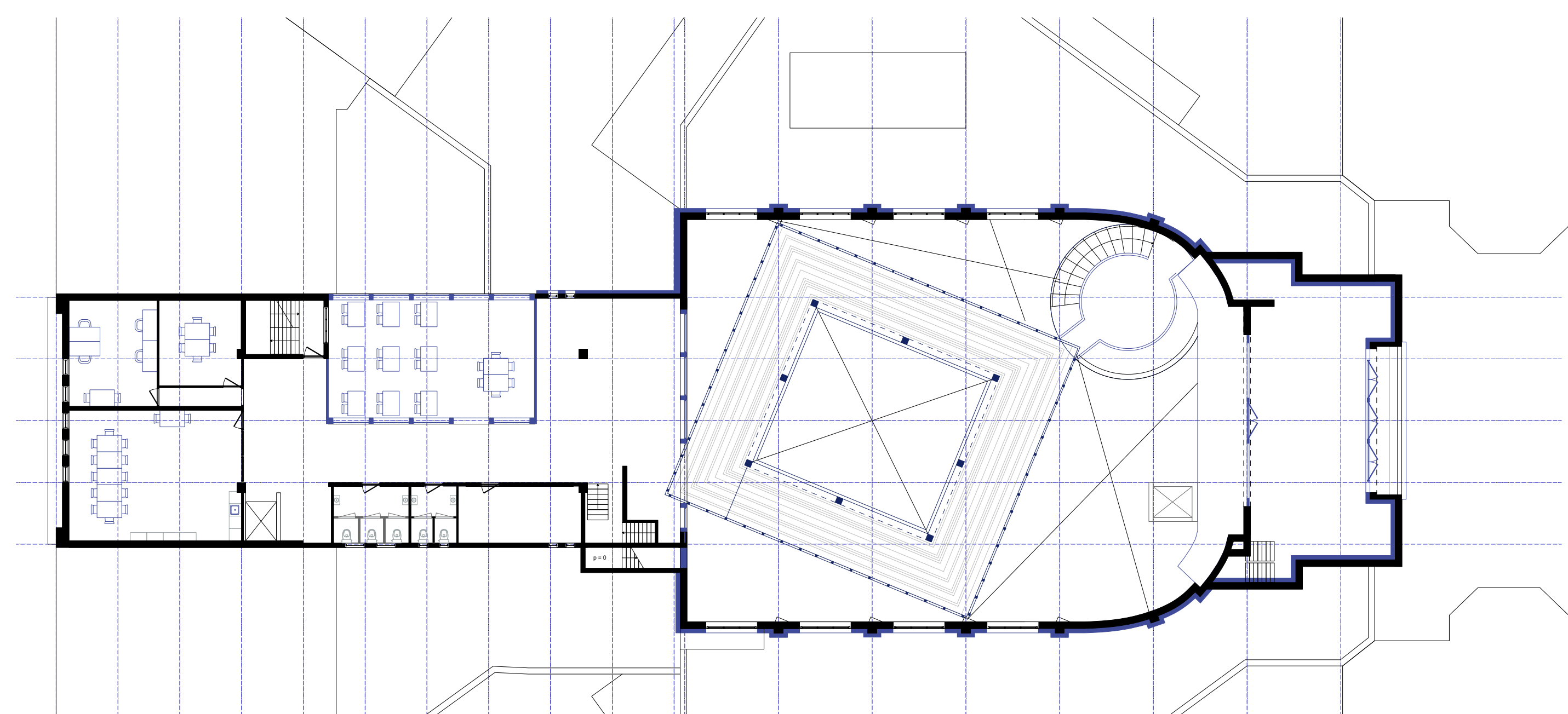
PROPOSAL LORENTZPASSAGE



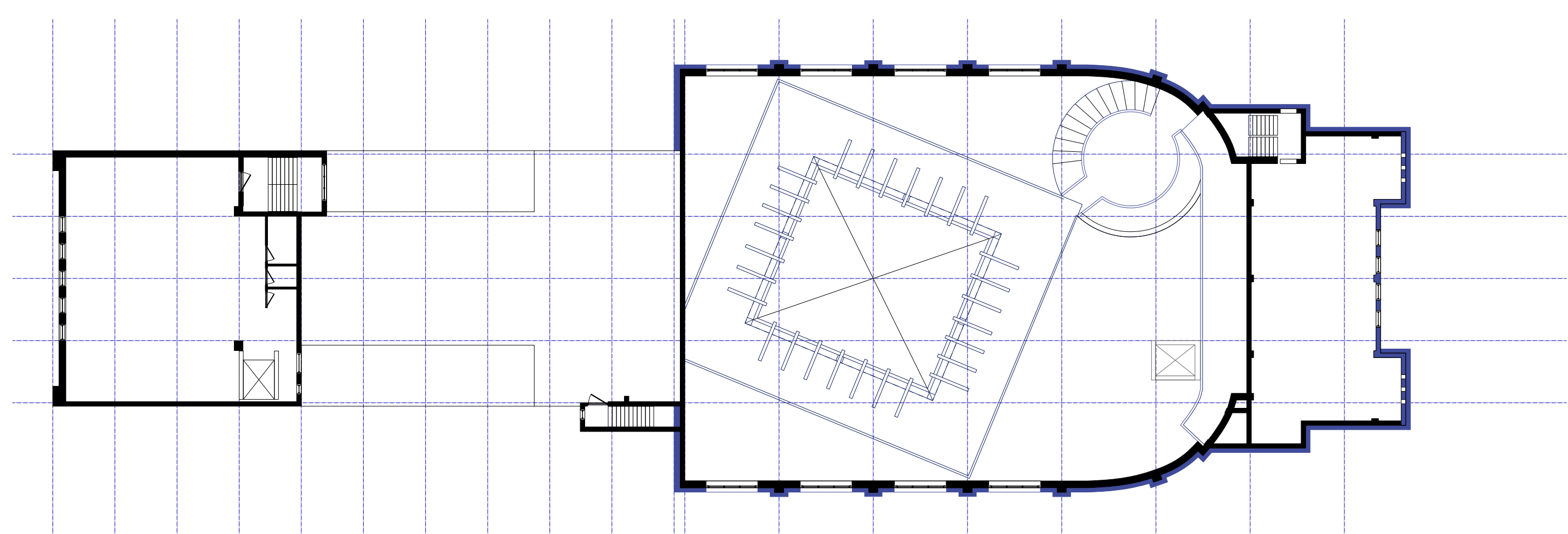
GROUND FLOOR



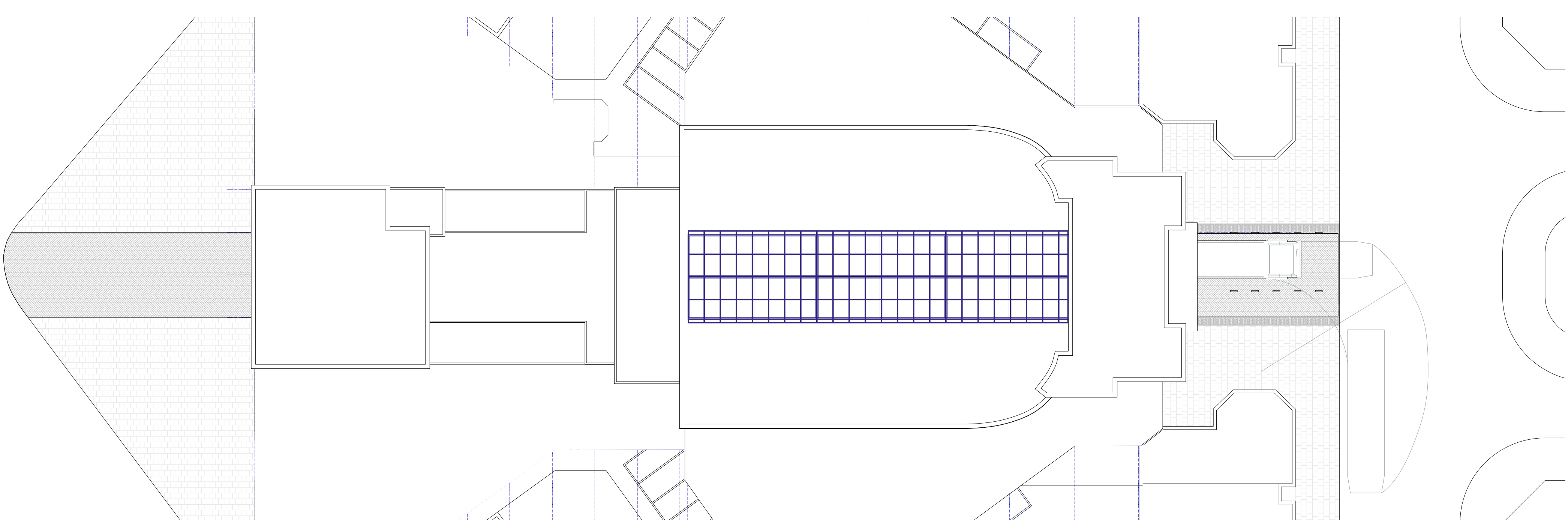
MIDLEVEL GALLERIES AND DRUM



FIRST FLOOR

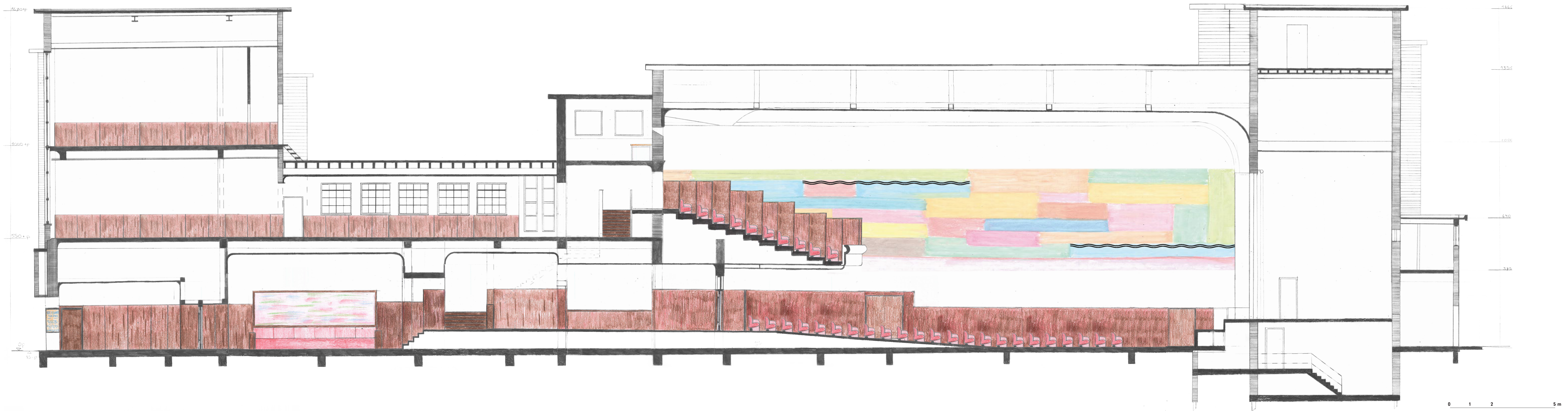


SECOND FLOOR

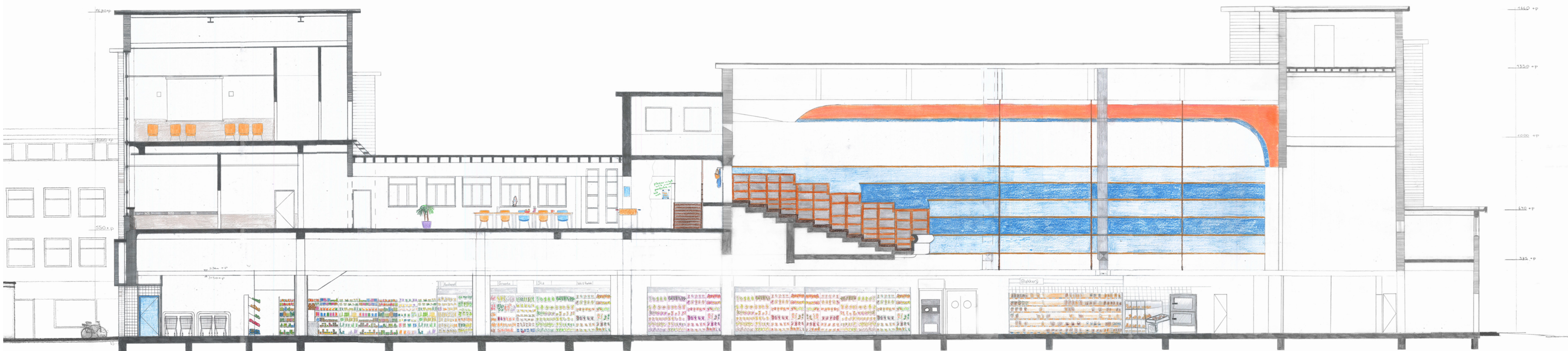


ROOF PLAN

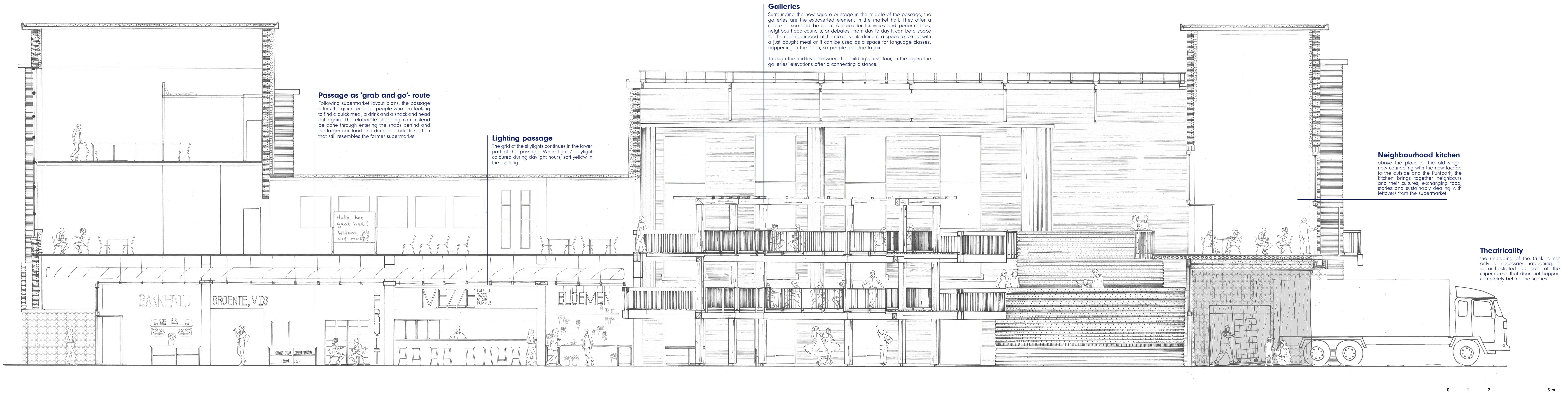
LONGITUDINAL SECTION REMBRANDT THEATER



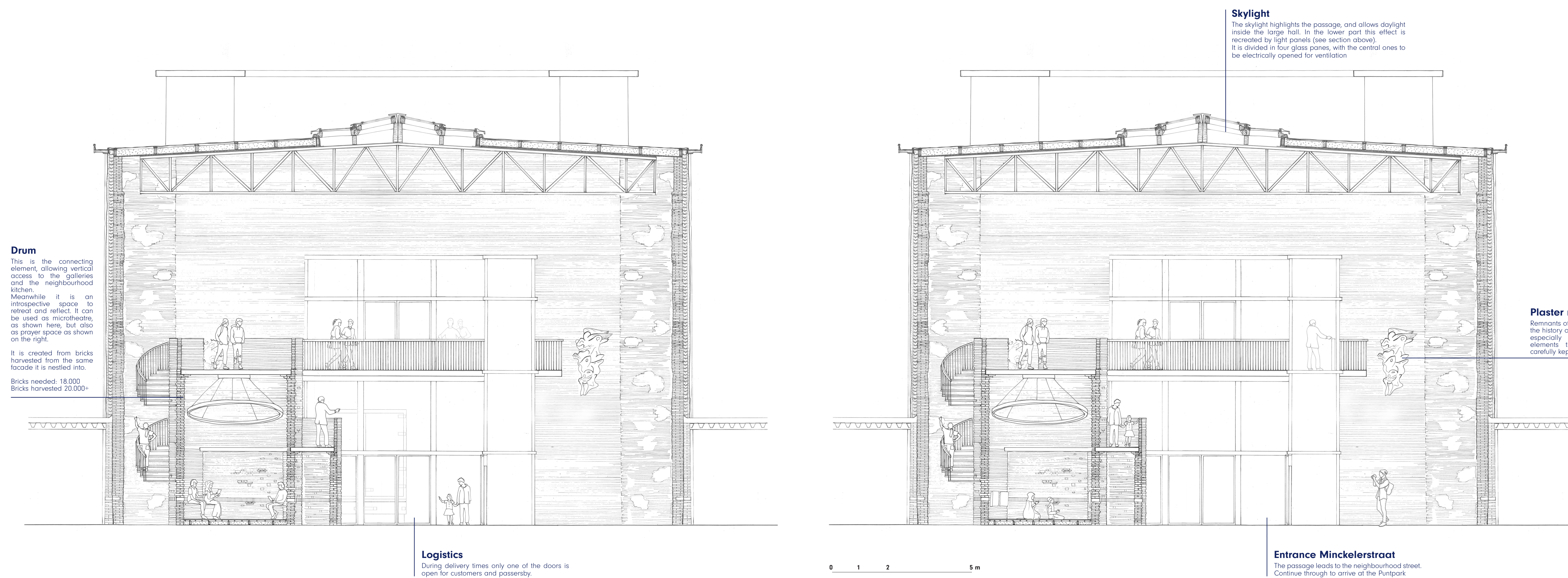
LONGITUDINAL SECTION ALBERT HEIJN



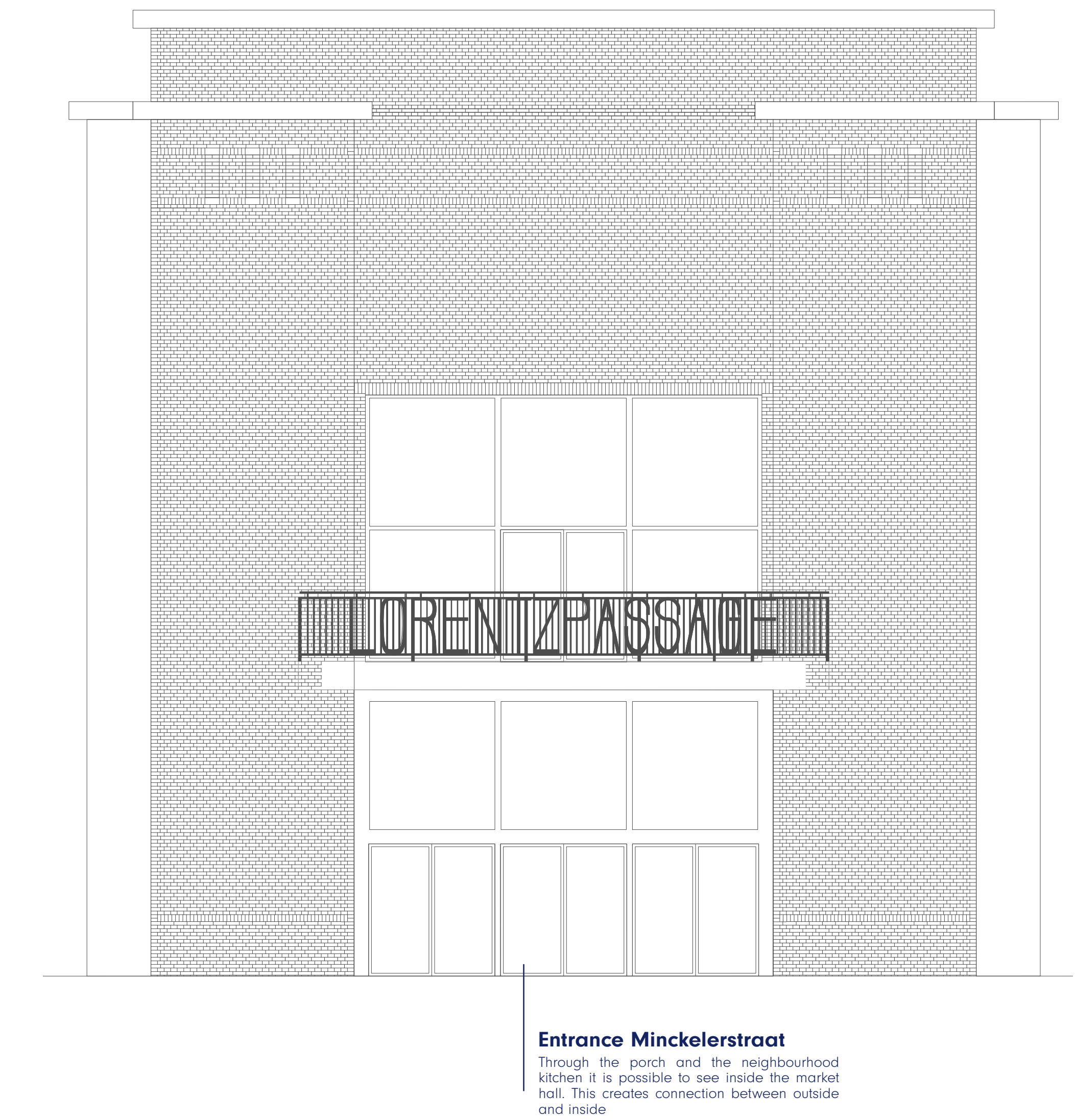
LONGITUDINAL SECTION LORENTZPASSAGE: THE STAGE FOR SOCIAL LIFE



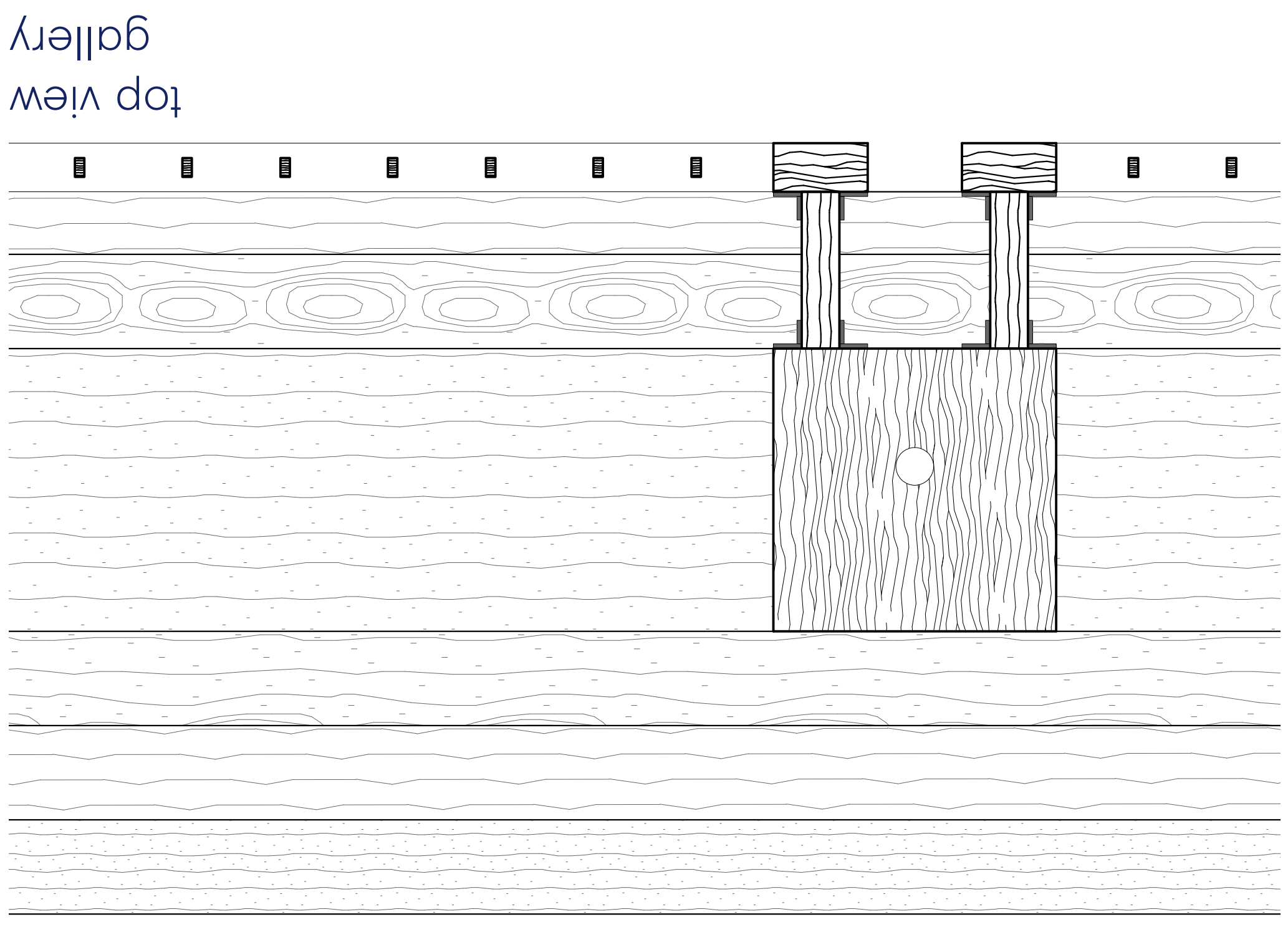
CROSS SECTION INTERIOR FACADE AND DRUM AS INTROSPECTIVE SPACE



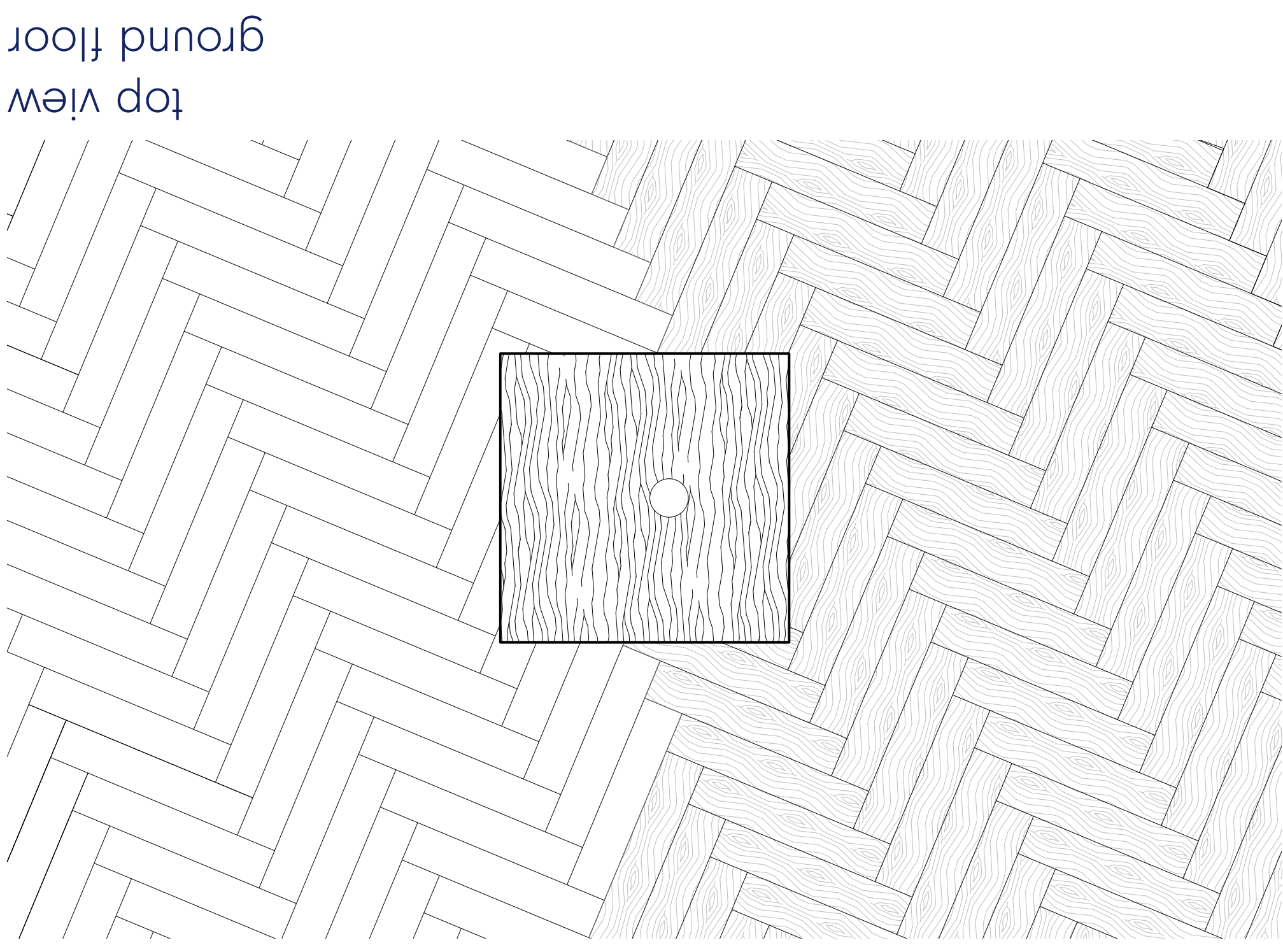
NEW FACADE INVITATION TO COME IN



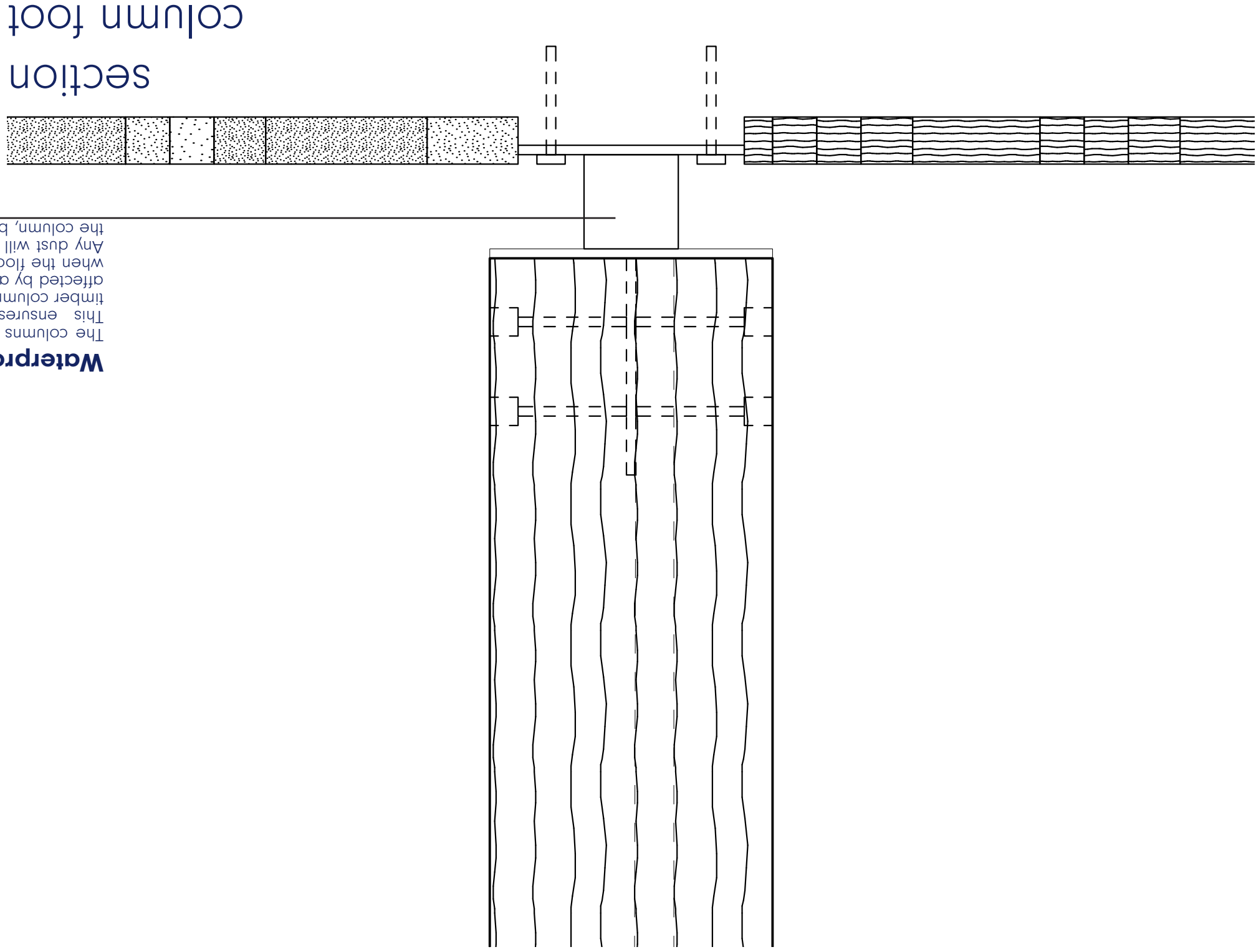
DETAIL SECTION THE GALLERY



top view
gallery



top view
ground floor

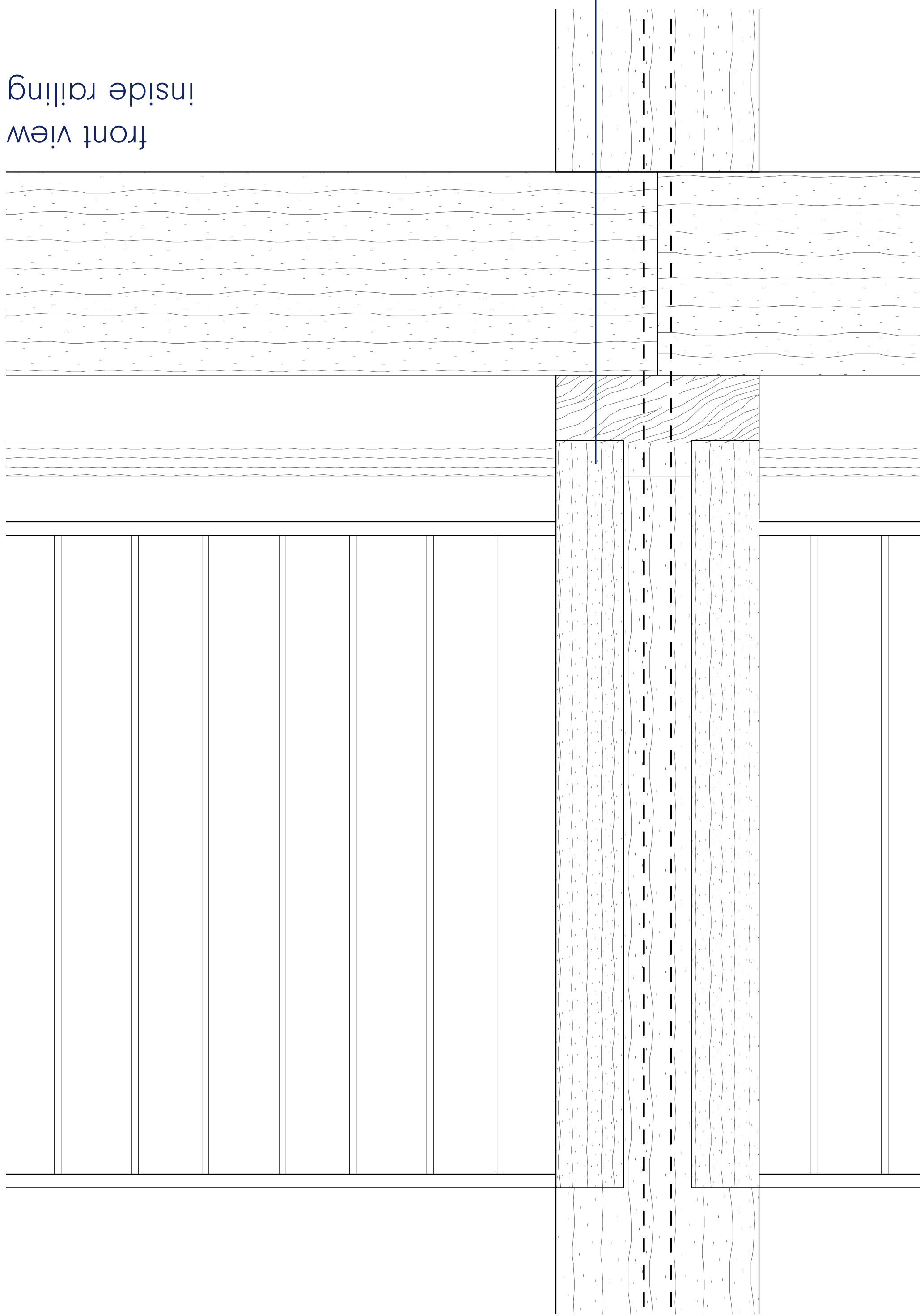


section
column foot

Waterproof feet
The column base is a steel foot. This ensures longevity for the timber columns, as they will not be affected by any remnants of water when the floor has been cleaned. Any dirt will not heap up against the column, but below, out of view.

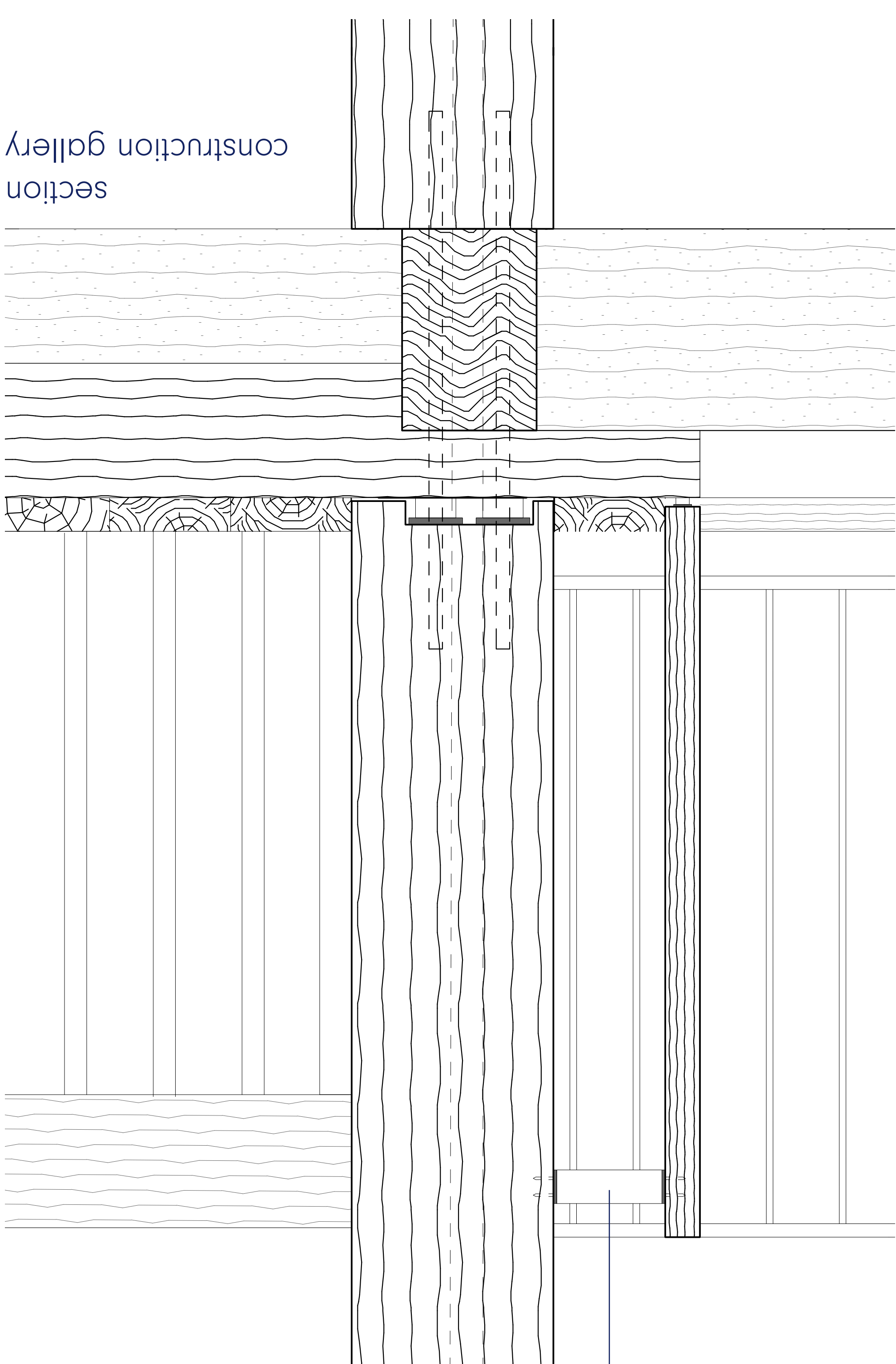
0 5 10 25 cm

Visible structure
The entire wood structure can be seen from inside and from below. The stacking of floor on crossbeams, crossbeams on beams and beams on columns make for an elemental construction. The elements are created to be simple in their readability and the ornamentation purely comes from the material language. The way the elements most clearly speak in a way they everyone may understand.



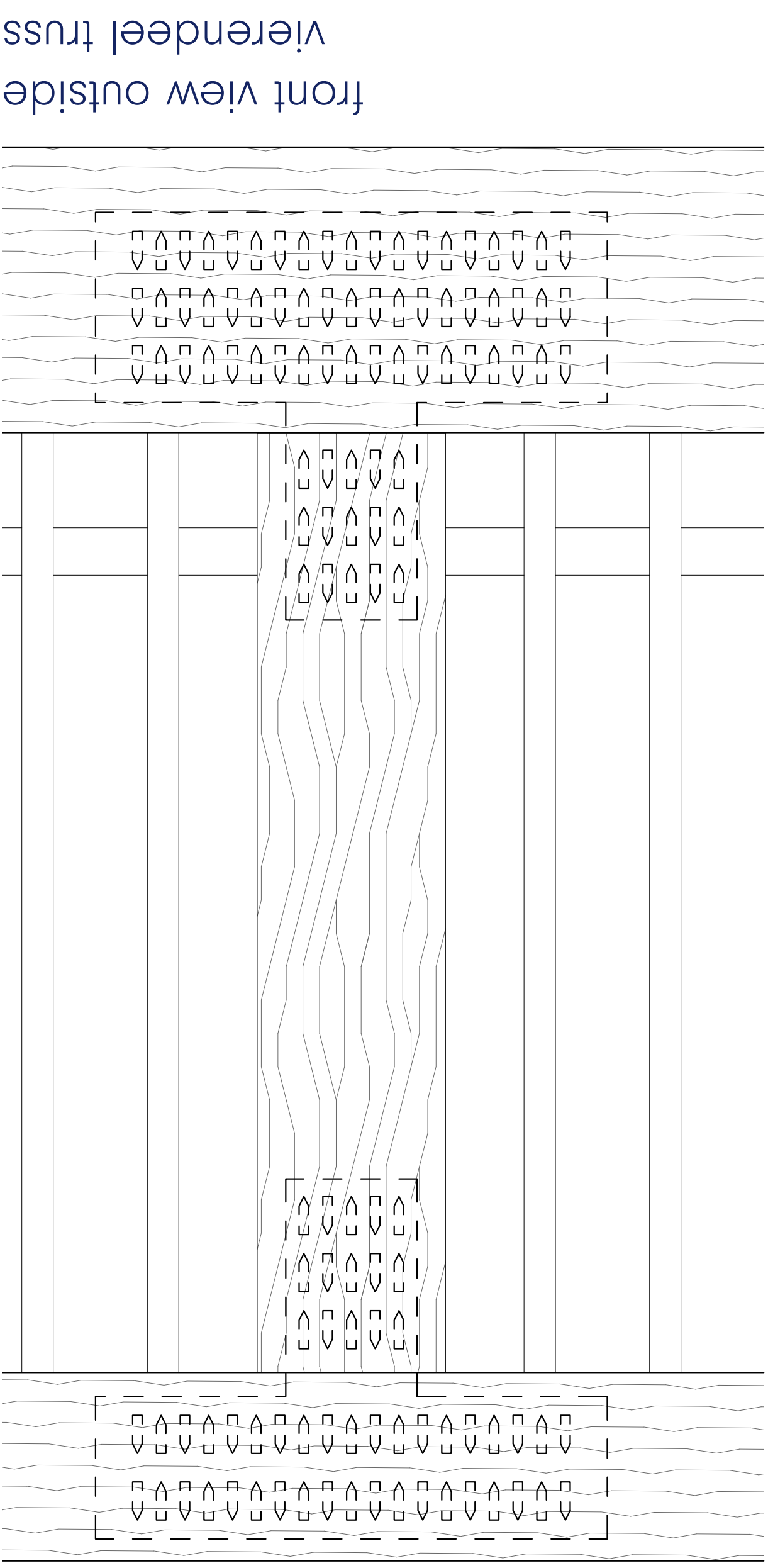
front view
inside railing

Extended railing
As a reference to the base, the railing is constructed with a slight distance from the column. This creates a slight distance in space, creating a sense of lightness. Small borders like these give people the opportunity to claim as 'their' during the time they spend there. As a reference to the base, the railing is constructed to window slightly within local circumstances, which leads to more purposeful interactions.



section
construction gallery

Pergola as cover
The pergola forms a roof for the structure of the gallery. The creation of more horizontal elements offers a possibility for the visitor to sit or stand. The pergola offers a possibility to cover the gallery, more for creating a sense of space for hanging decoration. Besides this it ensures that the lighting and sound reflections are not in direct view.



front view outside
verendeel truss

Temporality of construction
Wood has a certain temporal quality: in city fires, wooden houses would burn down. The oldest houses that still exist, are still here because they were already built in stone. Wood was even seen as a reusable item during reconstructions. It was to be handed back to the municipality to be reused for construction. In a sense the elements in this brick building keep that in mind, but re-interpret the materials and their rules too. Where the drum embeds itself into the existing structure, reusing its bricks. The timber is brought in as new, but its structure only touches the existing building at three points. The fourth point leans on the newly erected brick drum. This ensures that for any future plans the building is not drastically affected by the new interventions.