

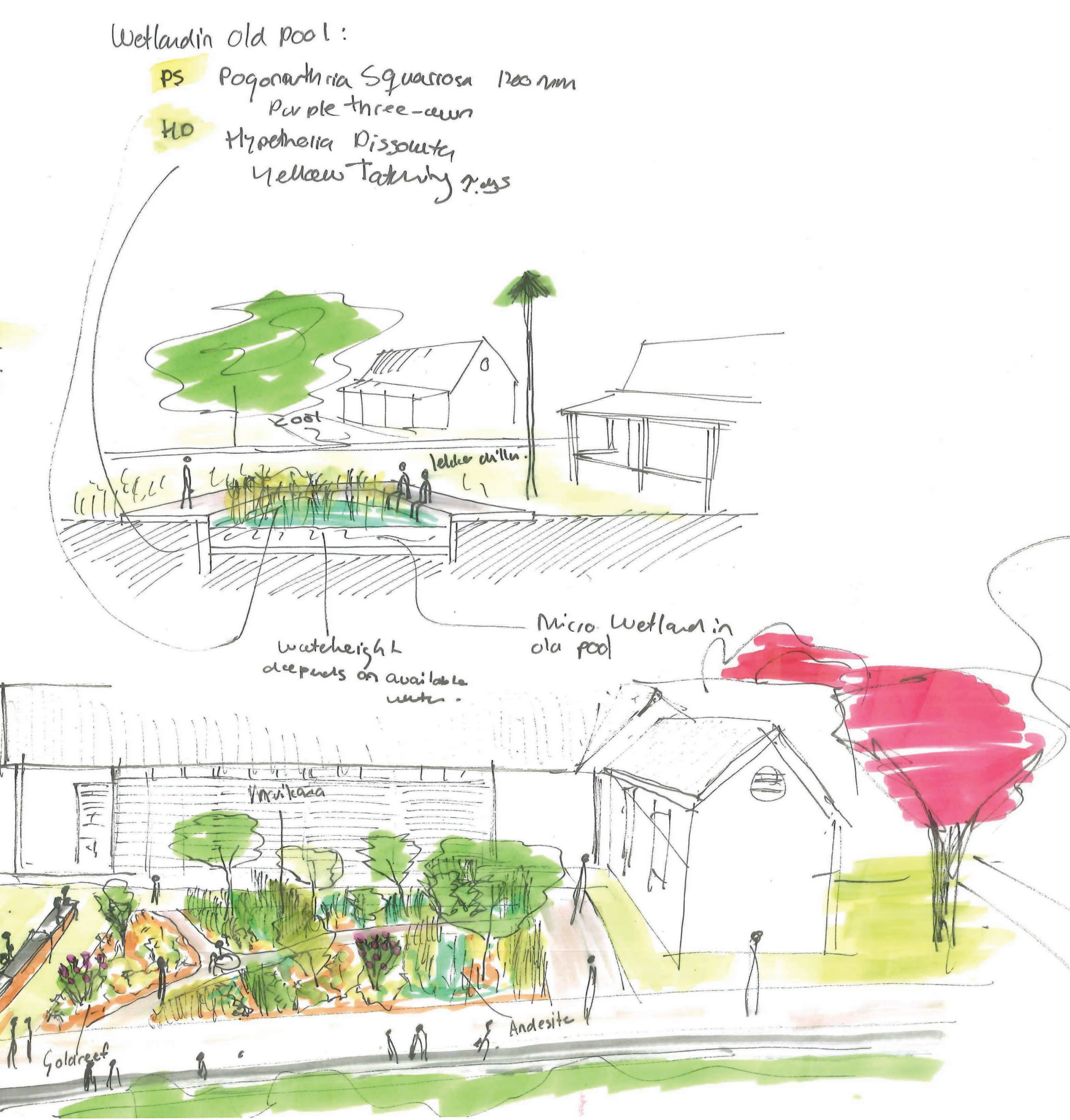
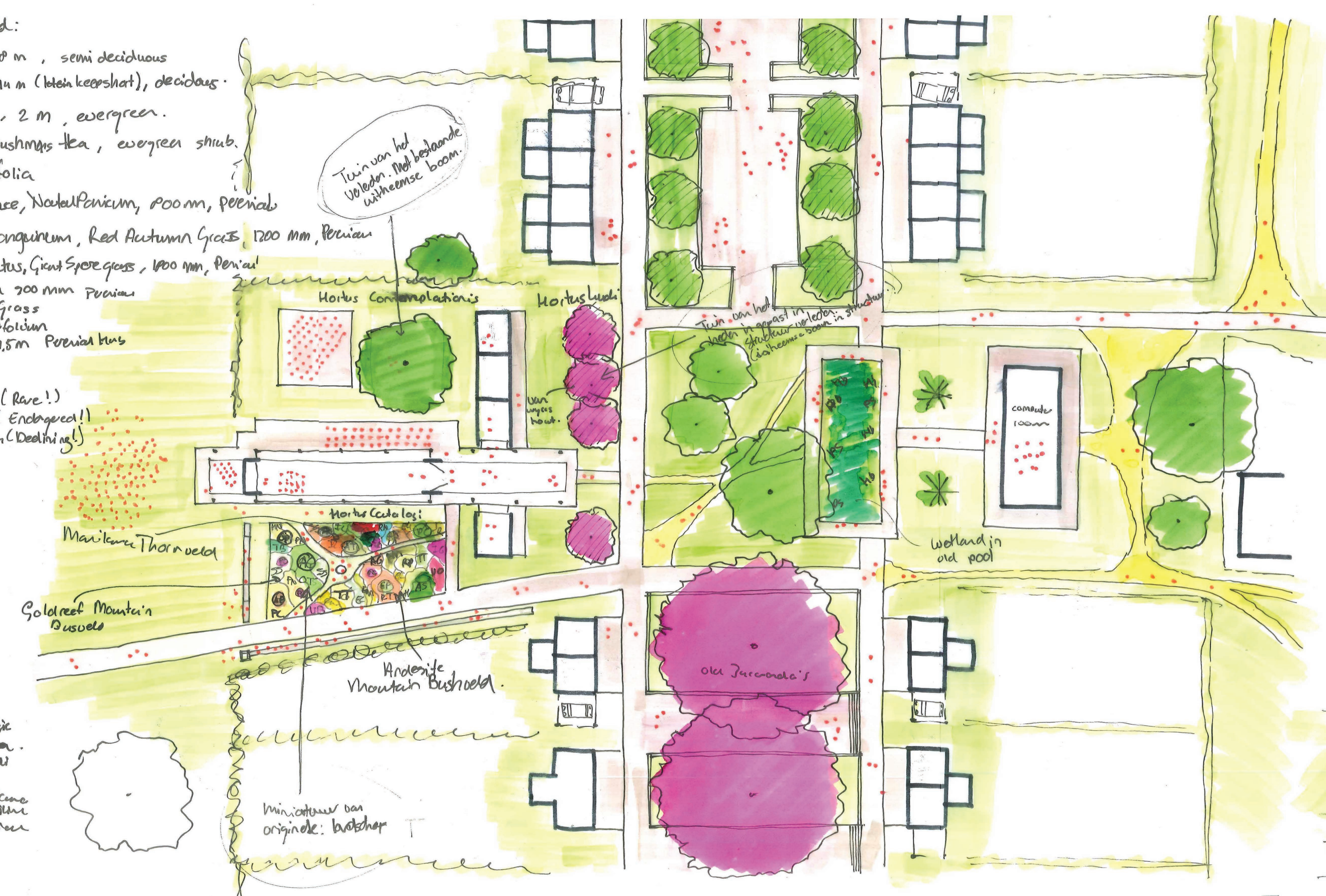


- Marikana Thornveld
- AB: Acacia Bulca, decidous
 - AK: Acacia Karoo, semi deciduous
 - AT: Acacia tortilis, Umkoma Thorn
 - PC: Pappier Capspur, Redstart plum
 - EU: Euclea undulata, 5m, evergreen
 - LN: Rhusradia Nitens
 - LD: Ixora regia
 - IL: Eragrostis Lehmannii, Lemmus boe grass
 - LA: Lepidocarpus reticulatus
 - SA: Crinoidium Tenidatum
 - DM: Sensitivea aetio picea
 - BM: Pinus Malacis
 - IO: Bortonia Marastegie
 - IO: Ipomoea Obsura

- Andesite Mountain Bushveld:
- PC: Protea Caffra, 8m, semi decidous
 - GP: Gynnosporia polyantha, Kedge Spiketoon
 - RP: Rhamnus Piroida, 4m, evergreen, Traditona mediciana, Gossleaf
 - AS: Asparagus suaveolens, evergreen, Traditona mediciana
 - TT: Tetarium Tritidum, 1.5m, Traditona velen
 - IG: Ixora grandis
 - RT: Rhoissio tridentata, duble Bushms grape
 - EC: Eragrostis carula, 1.2m, perianal grass
 - HH: Hyparrhenia lita, 1.5m, perianal grass
 - EM: Elyonurus Mutias, wire grass, 1.0m
 - TT: Thymela Tithala, Red grass, perianal grass, 1.5m

- Goldreef Mountain Bushveld:
- PC: Protea Caffra, 8m, semi deciduous
 - AC: Acacia Caffra, 1.4m (batenkeershat), decidous
 - OP: Ochra Robriosis, 2m, evergreen
 - AE: Athrixia Elela (Bushms Tea, evergreen shrub)
 - PC: Pearsonia Cajanifolia
 - FN: Panicum Nodulense, Nadelpanicum, 800mm, Perianal
 - SS: Schilachyrium sanguinum, Red Autumn Grass, 1.2m, Perianal
 - TS: Trachypogon Spicatus, Giant Spore grass, 1.2m, Perianal
 - TD: Tristadua bisata, 200mm Perianal
 - HN: Heteropogon Nuepolicum, vattenwits tea, 1.5m Perianal bus

- loose flowers:
- Patia Pubria (Rave!)
 - Alce Fragrae (Enchored!)
 - Hypois Hemolida (Deadling!)



LANDSCAPE AROUND WORK INCUBATOR