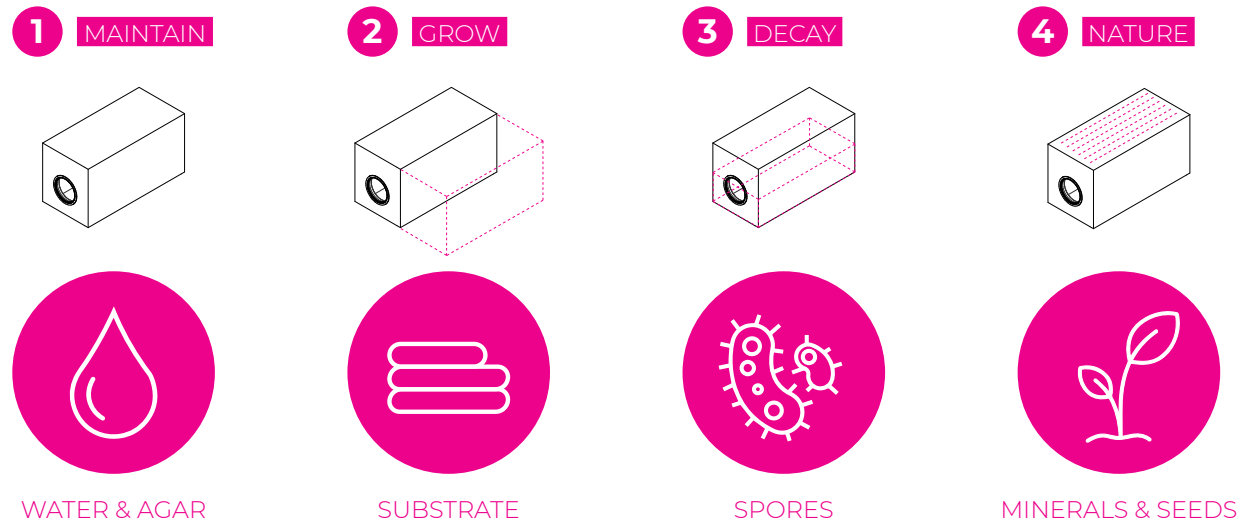


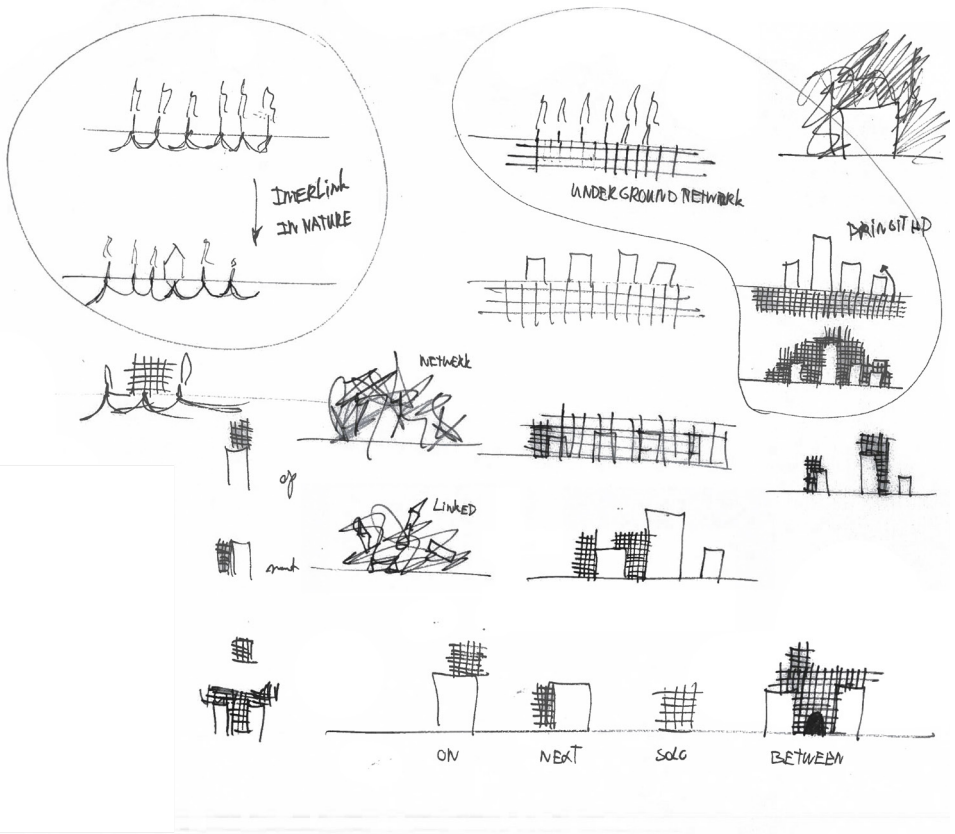
Interlink.

The relationship between humanity and its environment is broken. For centuries, humanity has dominated this relationship to enter a stage in which further temperature rise towards 1,5 Celsius would have irreversible consequences towards earth's valuable ecosystems. One of the main contributors to this cause is our current way of building, that results in high carbon dioxide emissions, raw material depletion and is often a linear process. In contrast to mankind's 200.000 years of parasitism, Mother Nature has been innovating for 3.8 billions years true trial and error, forming symbiosis with beneficial consequences to planet earth. While most researchers had their eyes on the plants & organisms above ground, recent discovery's show that earths most crucial creatures live underneath us. Over 92% of all plants species rely on mycelium and its ability to recycle organic matter into key nutrients for seedlings to flourish. It is a vast underground network that connects the roots of plants. Not only does 'Natures Internet' share nutrients, it is also able to communicate and share information. Therefore, an opportunity arises for mankind to break through its fixed-minded ideas and truly become part of nature's ecosystem. Imagine a building that grows, breaths and heals itself. I present, *interlink*: worlds first living architecture.

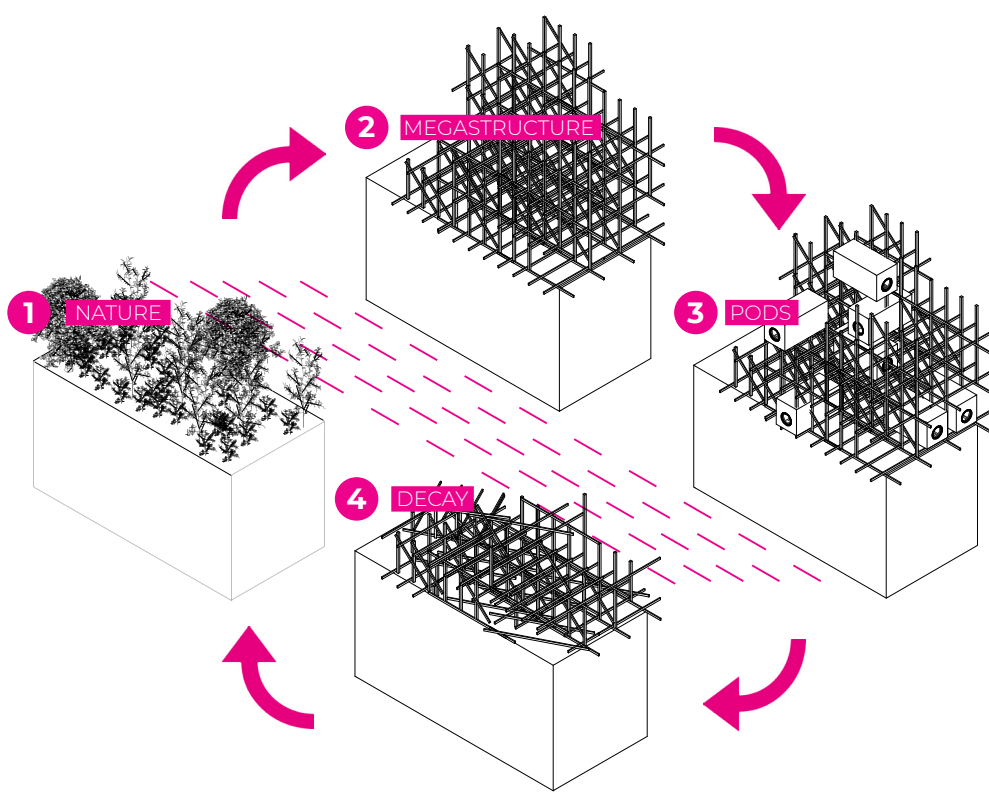
Nurture.



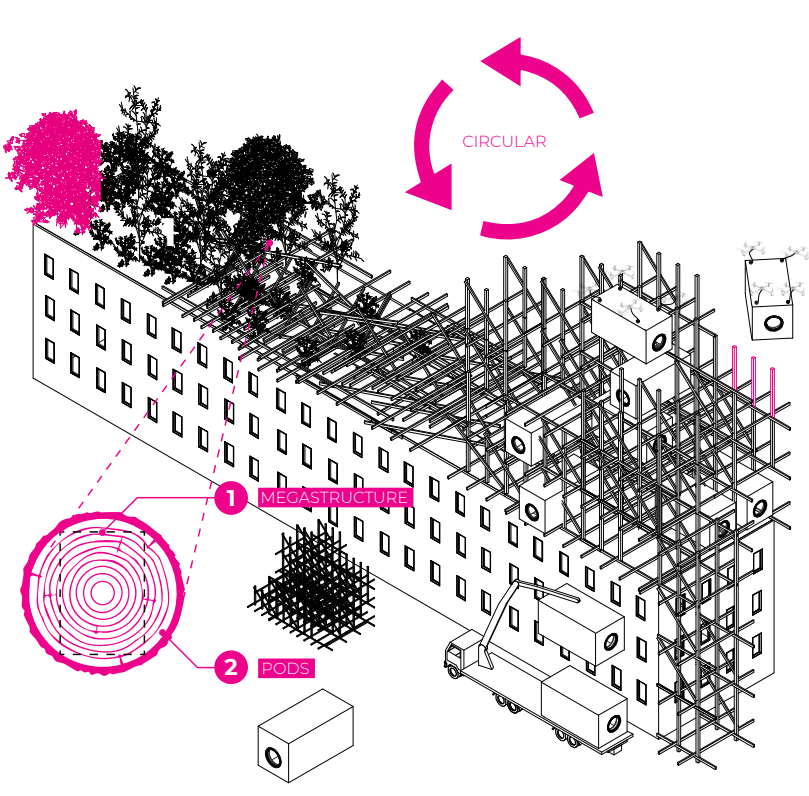
Nature's Internet



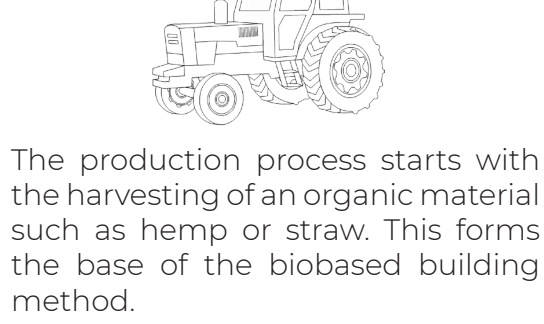
Constant Temporarily.



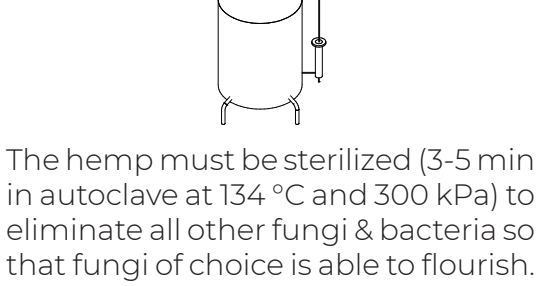
Closed loop system.



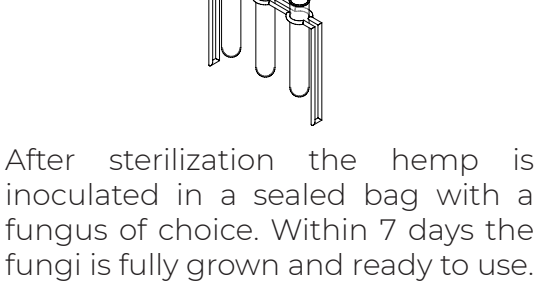
Production Substrate



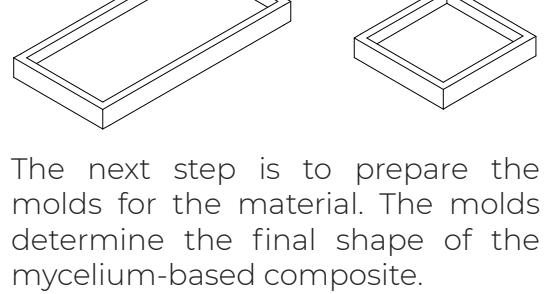
Sterilize



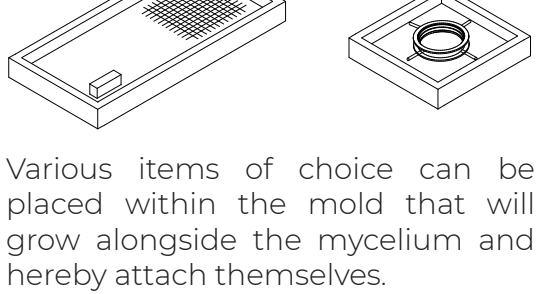
Inoculate



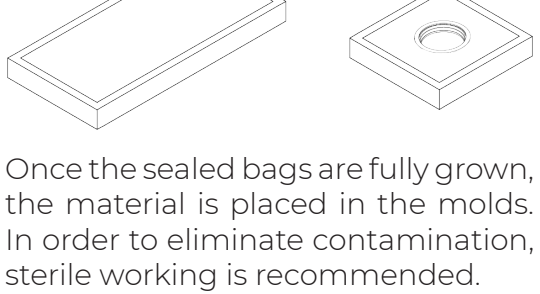
Molde



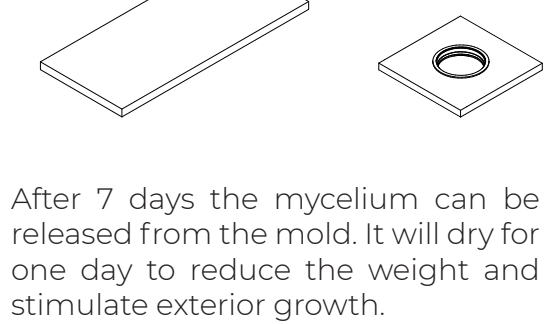
Place



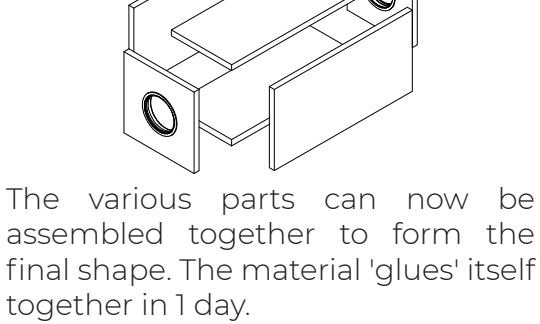
Grow



Dry



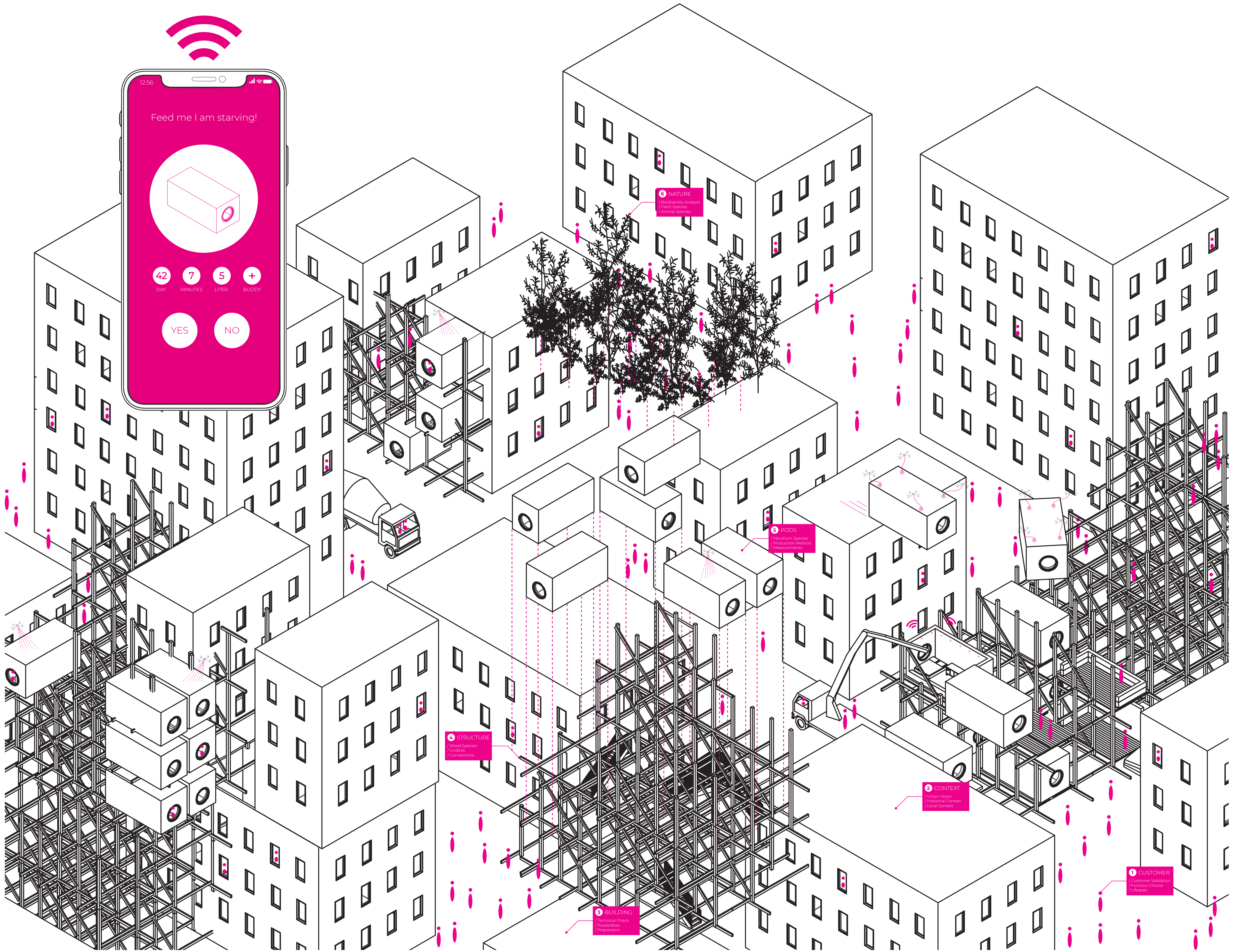
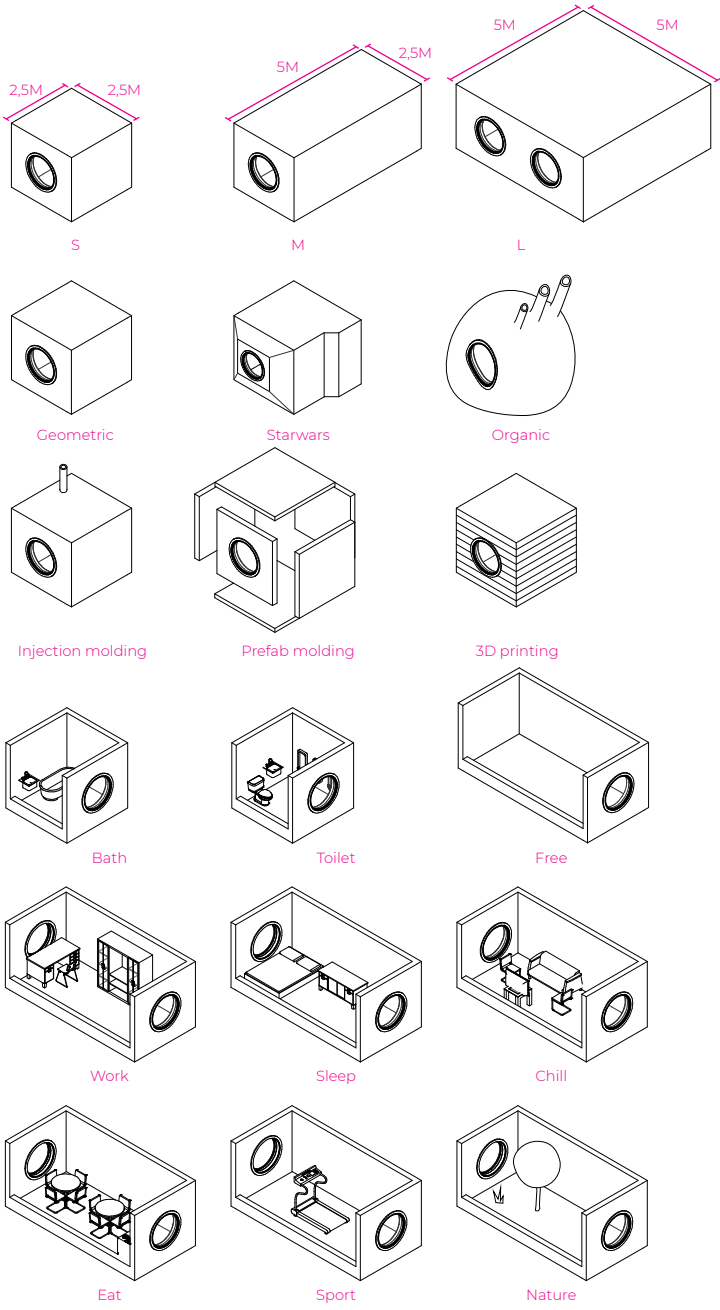
Assemble



Pod



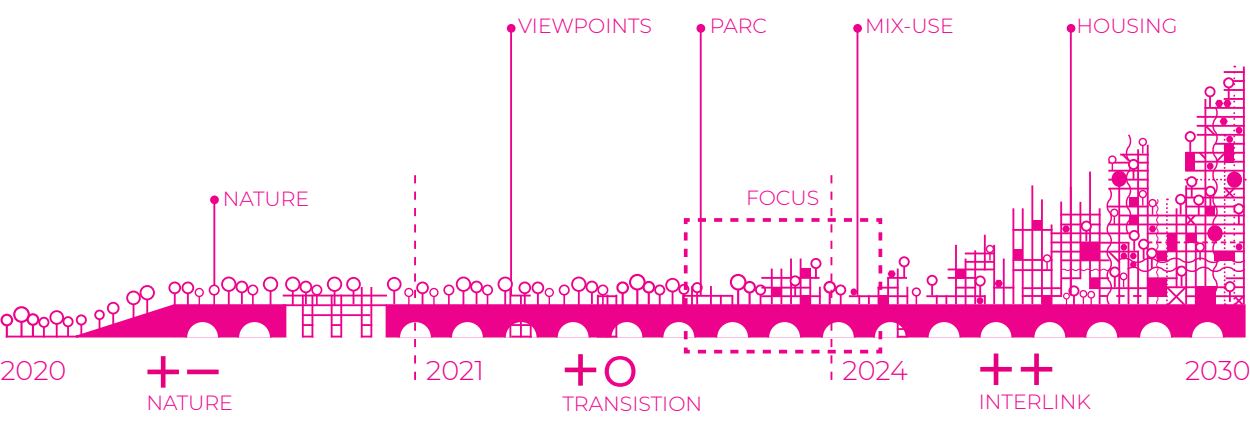
Pods.



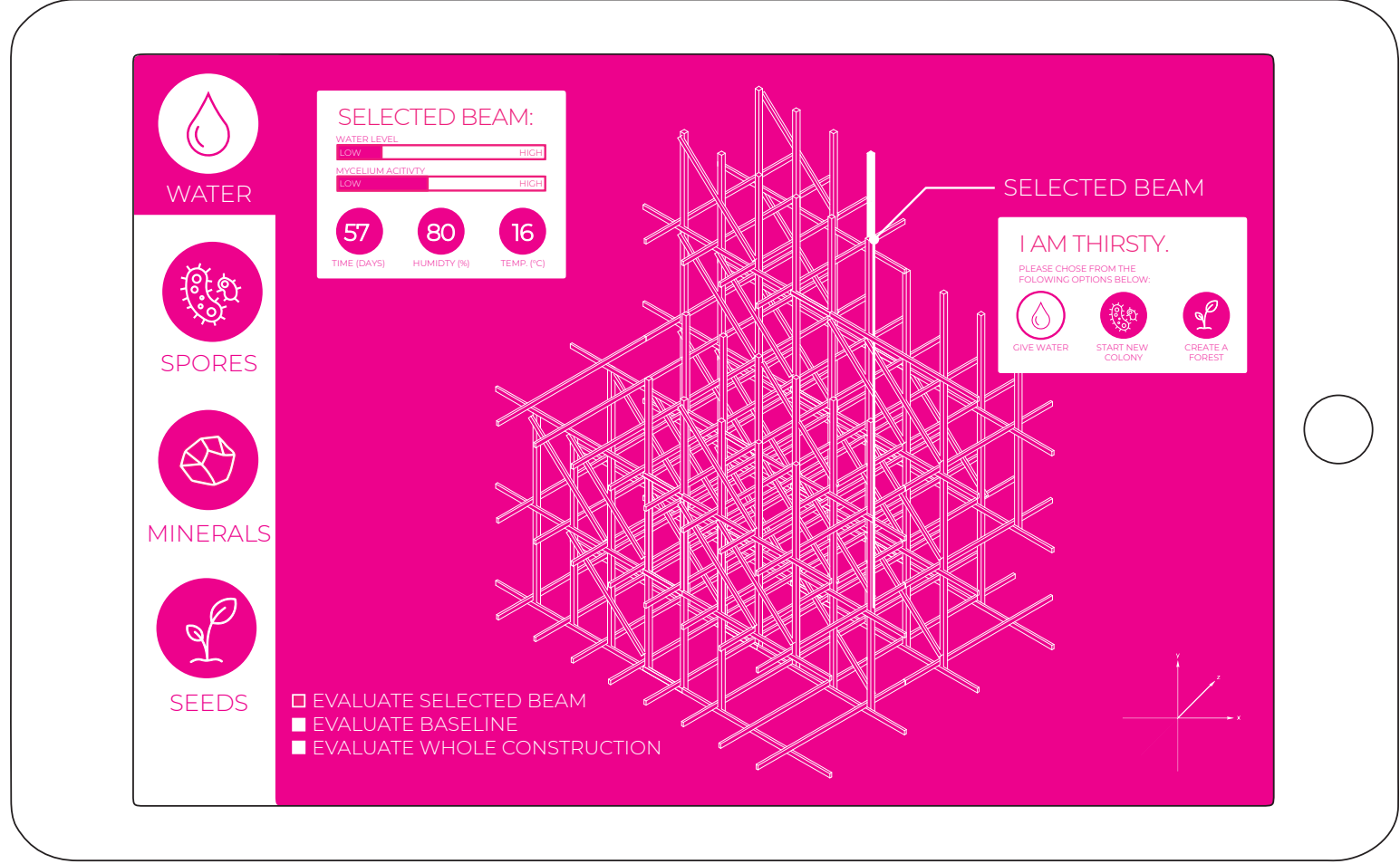
Showcase.

Somewhere along the way we have forgotten that we are part of nature. That we are highly dependent on our environment for our survival. By closing our eyes and neglecting the laws of nature, we have transformed ourselves into a parasite that feeds on the earth. To restore this relationship, the symbiotic phases of parasitism, commensalism and mutualism must be traversed. The municipality of Rotterdam has asked to present the new construction concept on the Hofbogen. This is an old, characteristic train viaduct that has been abandoned since 2010. Architectural waste that can be transformed by the building into nutrients for its surrounding. On the north side of the Hofbogen the building enters the tracks and slowly 'walks' into the city. In the first phase, the building confronts humanity. The building has no function and will degrade in nature. Hereby raising fundamental question about the value of nature. In the next phase, functions - such as viewpoints and parks - are gradually added which will increase the lifespan of the building. This is the transition phase. In the final phase, humanity will be in a mutualist relationship with nature and fully interlinked. The goal is to be fully transferred to living architecture in 2030 as a human race.

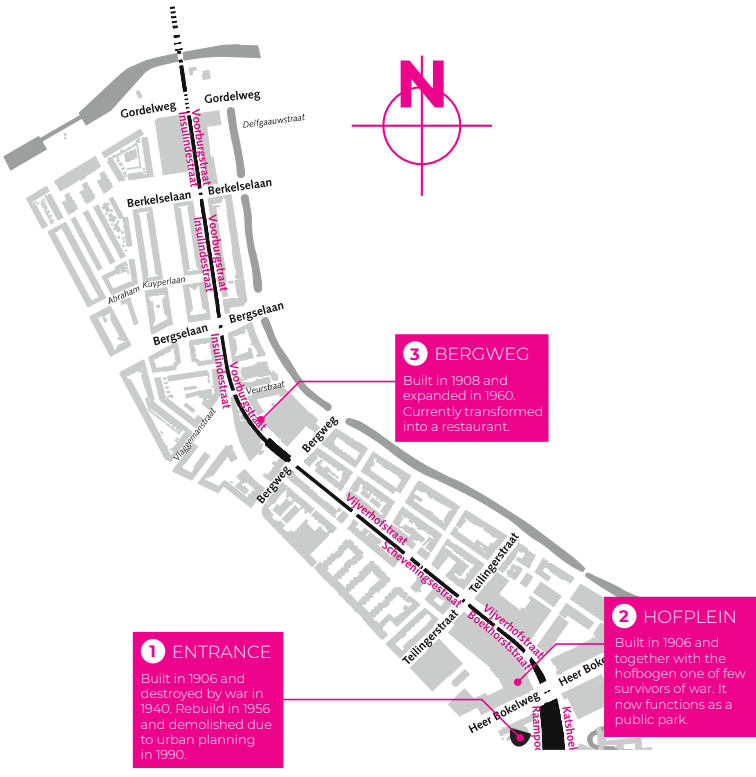
Goal



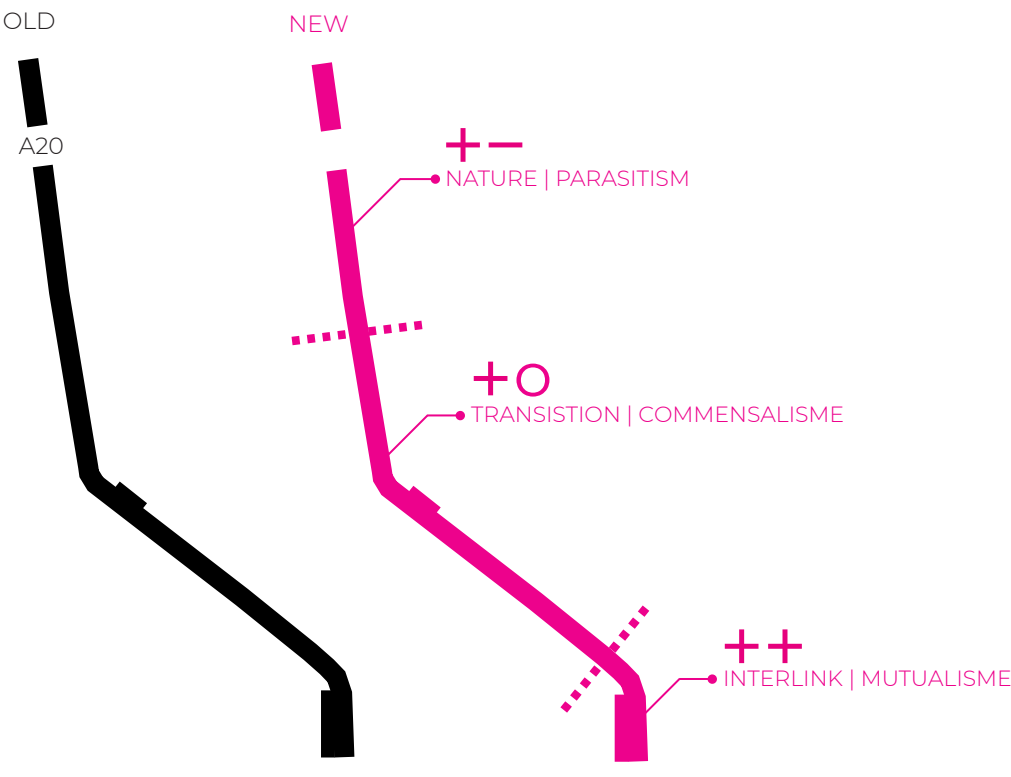
Nurture



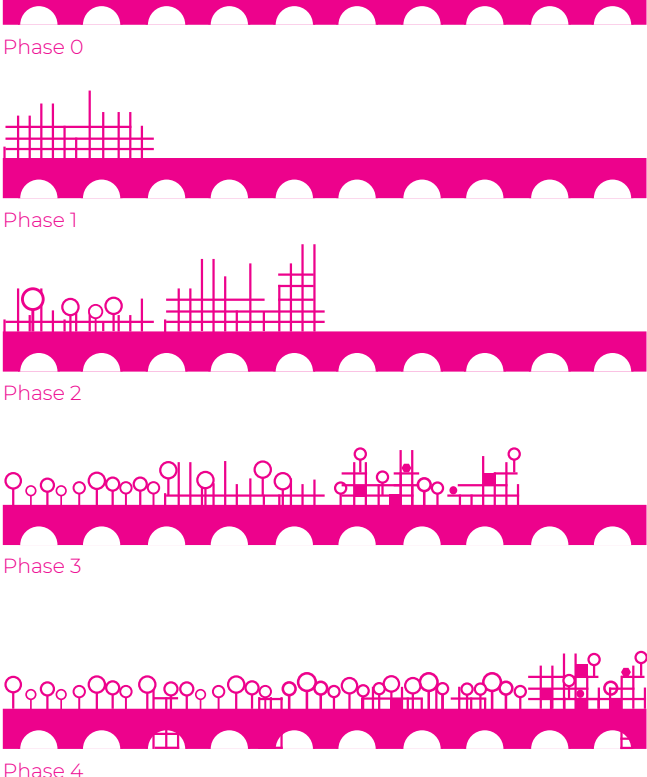
Situation



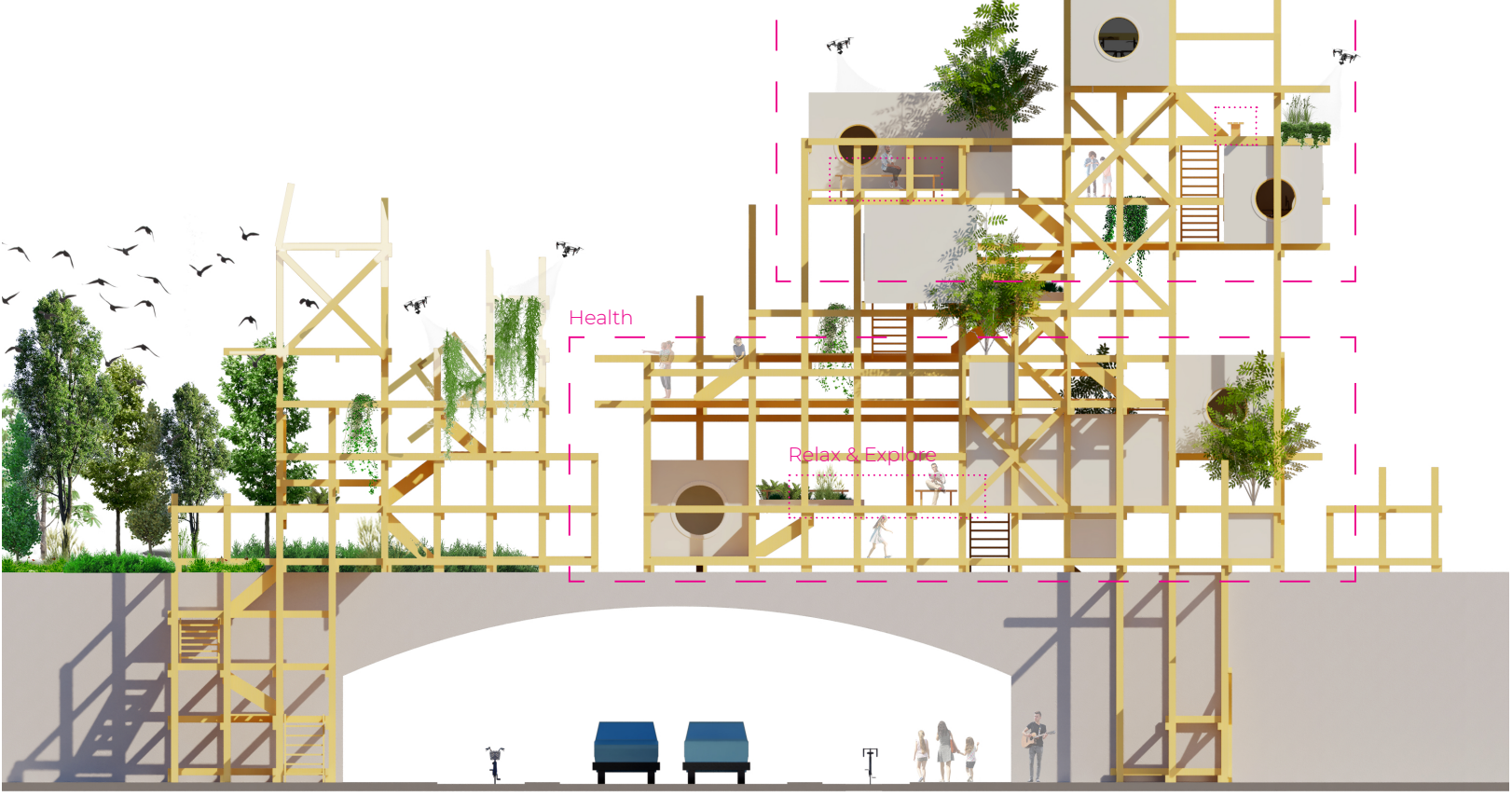
Vision



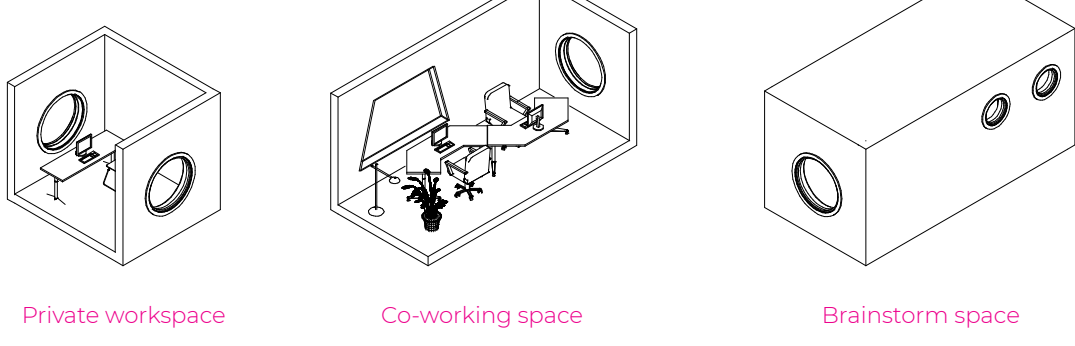
Constant change



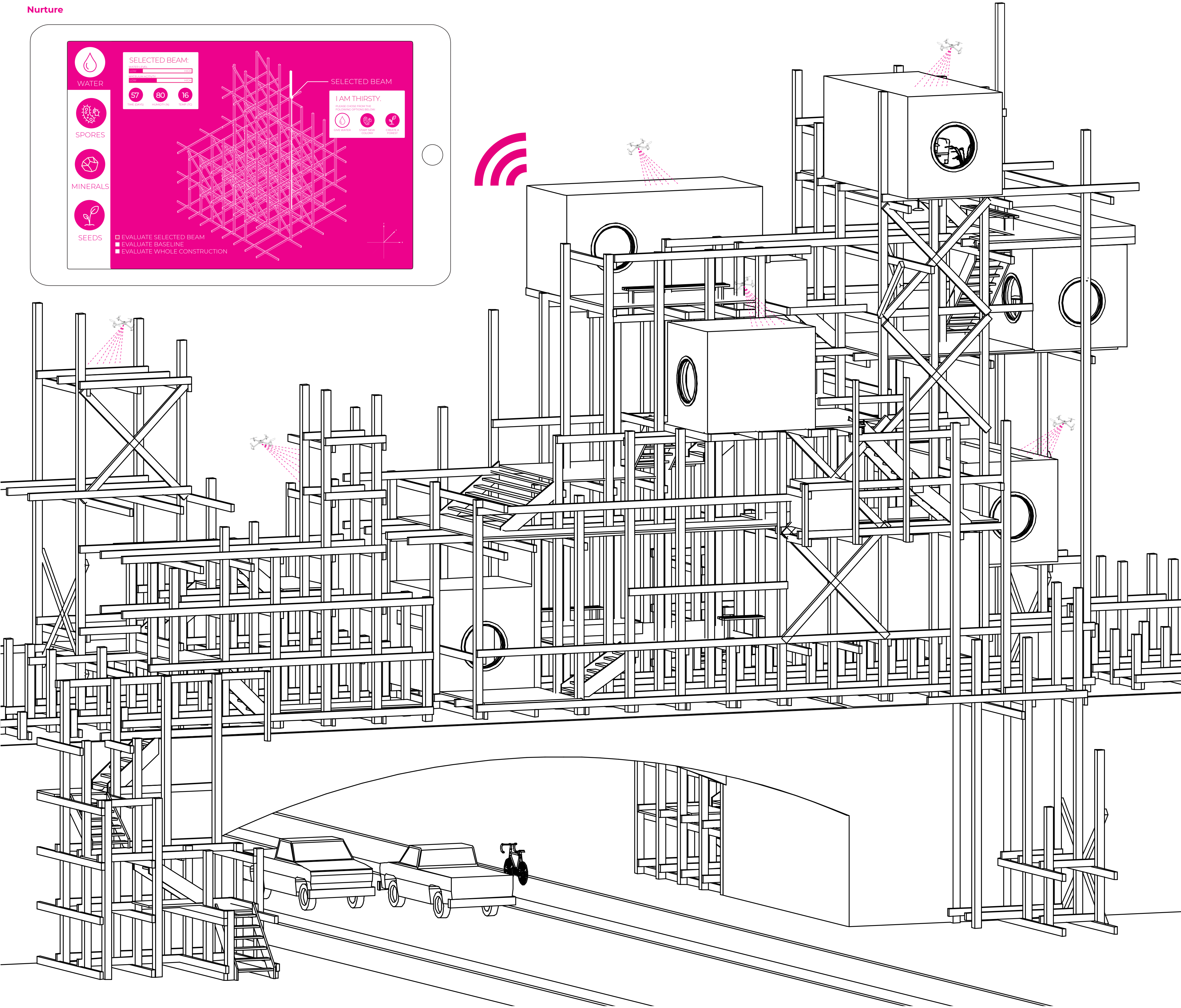
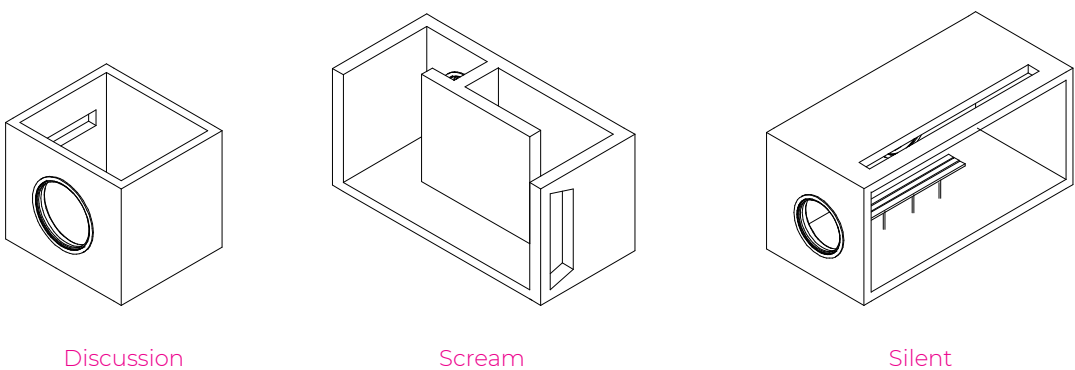
Functions



Productivity Pods.

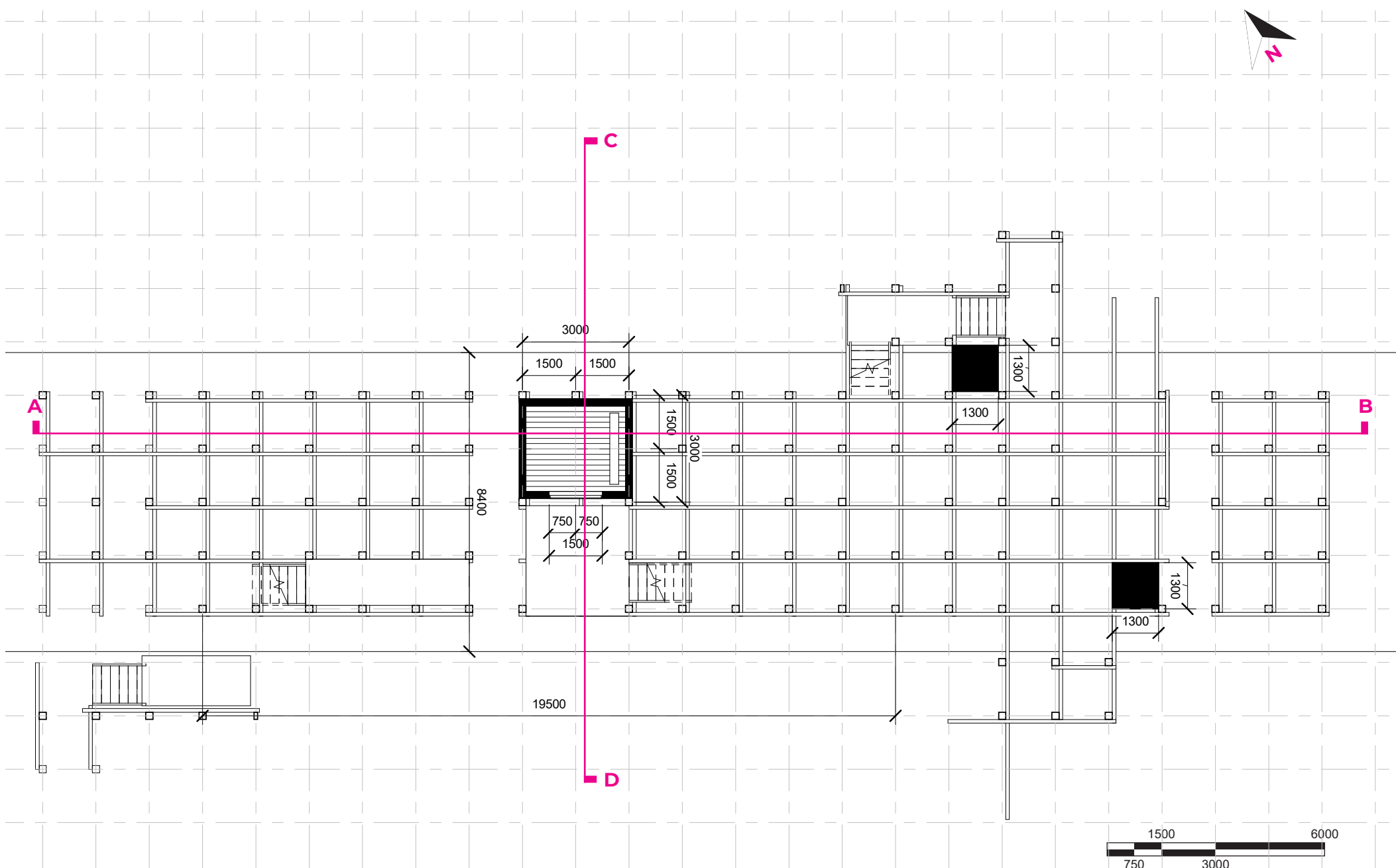


Meditation Pods.



Technical.

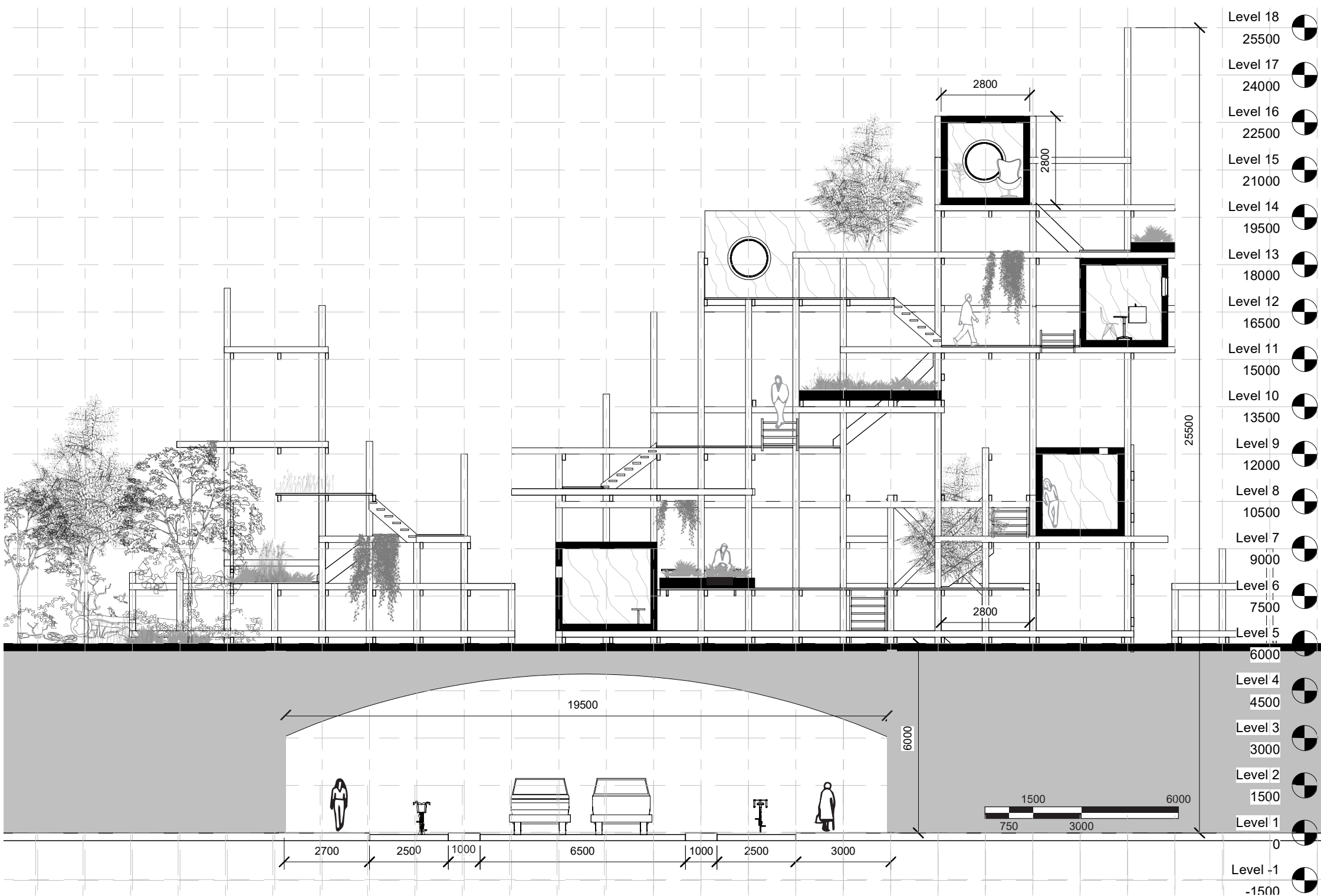
Site Plan 1:100



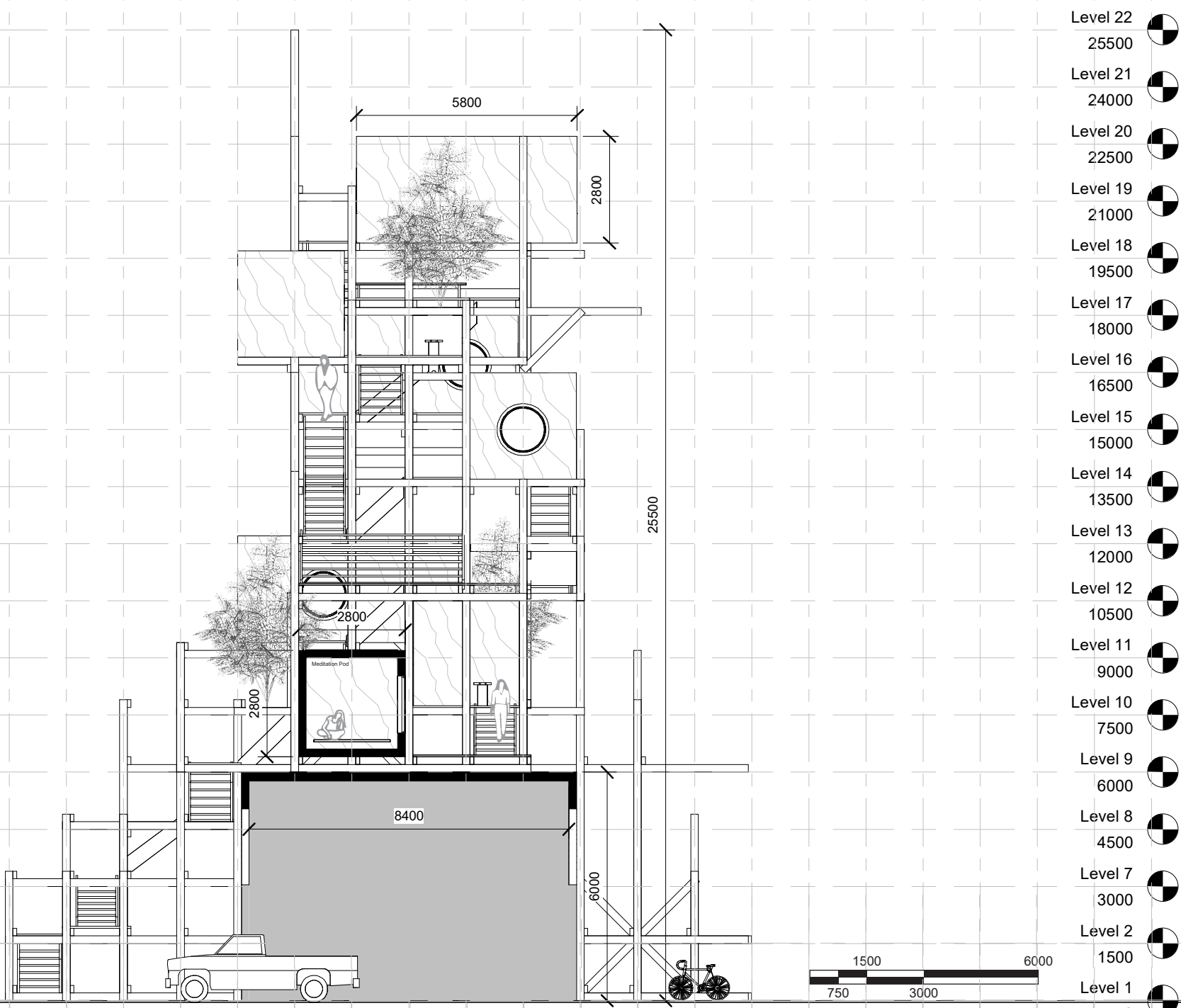
Plans 1:200



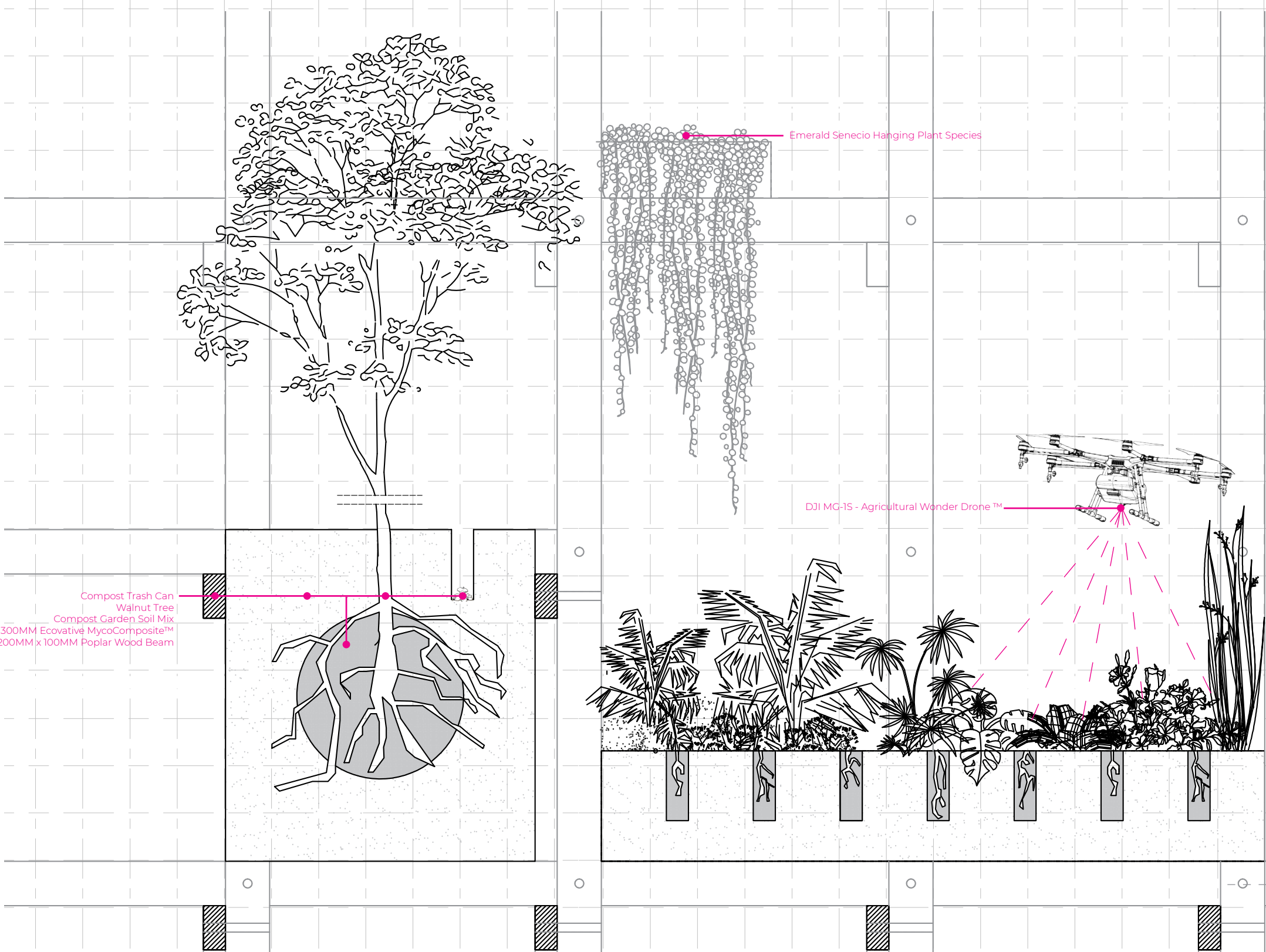
Section AB 1:100



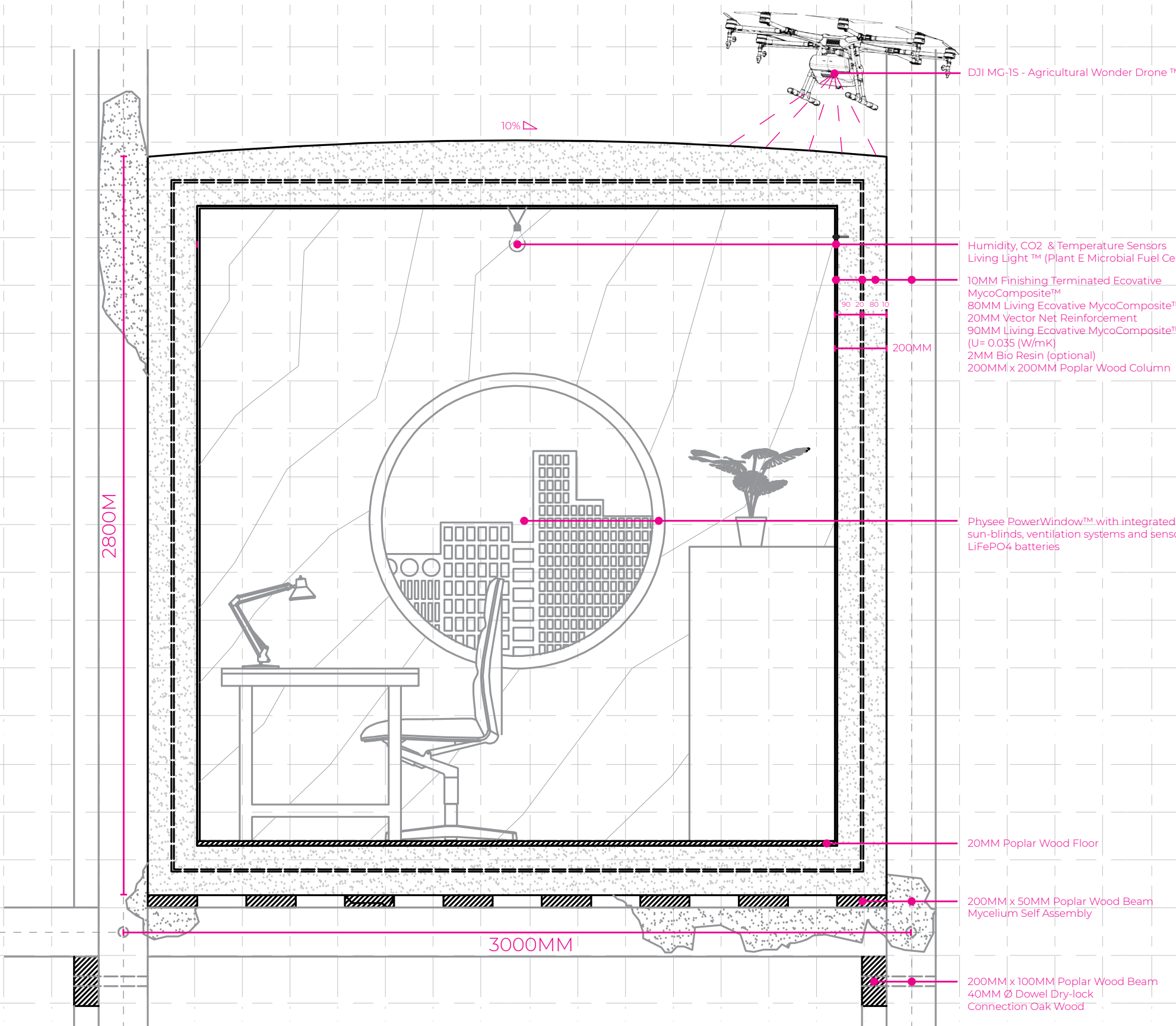
Section CD 1:100



Nature Detail 1:20



Pod Detail 1:20



Through Time.



Fase 1: 2021



Fase 2: 2022



Fase 3: 2023



Fase 4: 2024