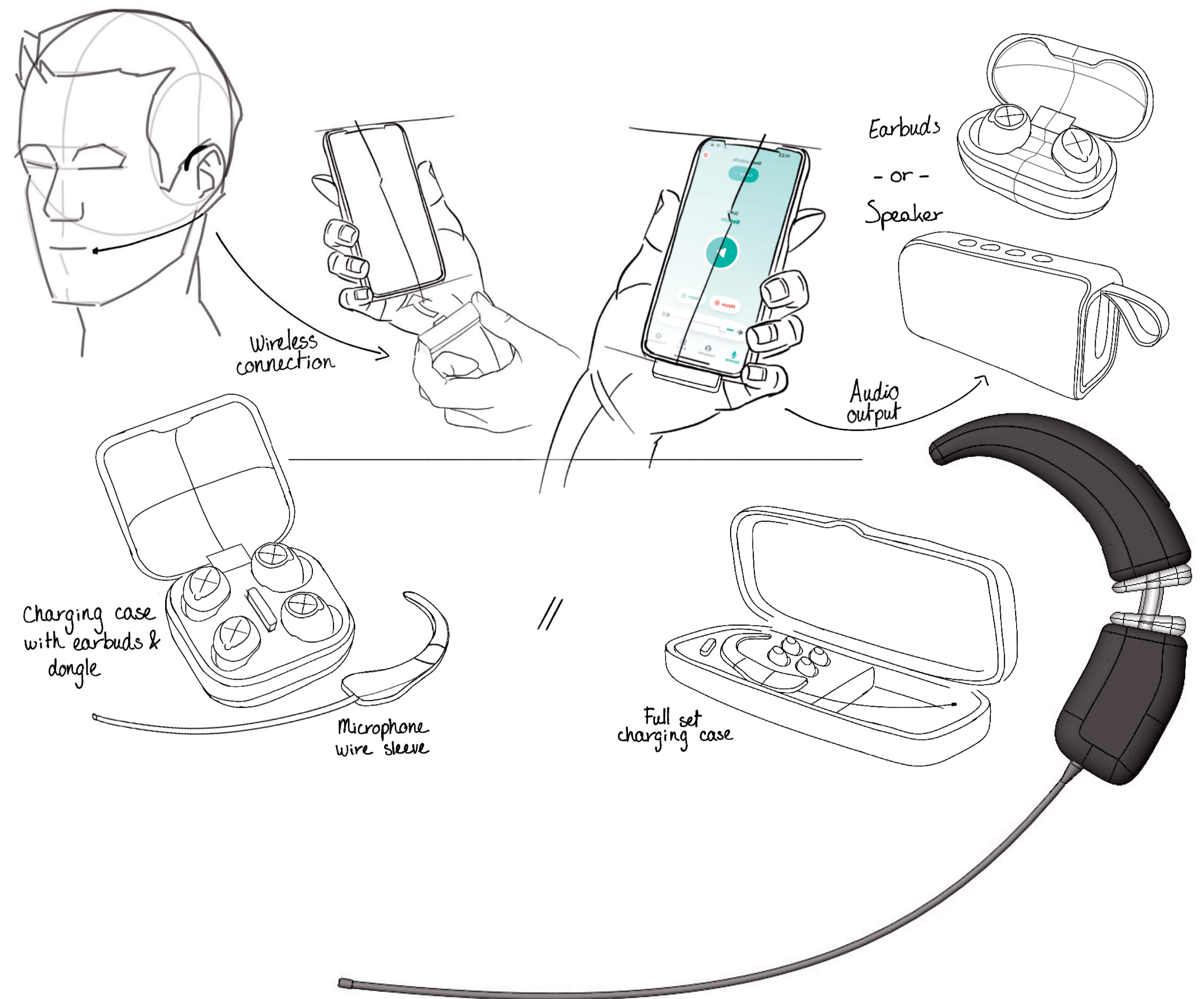


# Enhancing communication for people with voice disabilities

Design of a speech enhancement device that utilises existing components to improve communication for individuals with voice disabilities.

For millions of people, **voice disorders** make everyday communication a challenge. These conditions, which affect pitch, loudness and/or voice quality, can significantly impact both personal and professional life. Existing **assistive devices** often fail to combine comfort, discretion, and usability, leaving a gap in effective support.

This project presents a wearable microphone that works with **Whispp's AI-powered app** to transform whispered or impaired speech into a clear, natural-sounding voice in **real time**. Its around-the-ear design is comfortable, discreet, and easy to use, enabling **smooth and confident face-to-face communication**.



Naomi Lolling  
Enhancing communication for people with voice disabilities  
28/08/2025  
MSc Integrated Product Design

**Committee** Prof.ir. D.J. van Eijk  
Dr. M.K. Chmarra  
Joris Castermans  
**Company** Whispp