



Delft University of Technology

Document Version

Final published version

Citation (APA)

Mosteiro-Romero, M. (2025). Leveraging data for energy efficiency and climate resilience. Web publication/site, National University of Singapore. <https://cde.nus.edu.sg/nuscities/creature-comforts-and-climate-resilience-newsletter-issue-4/>

Important note

To cite this publication, please use the final published version (if applicable). Please check the document version above.

Copyright

In case the licence states "Dutch Copyright Act (Article 25fa)", this publication was made available Green Open Access via the TU Delft Institutional Repository pursuant to Dutch Copyright Act (Article 25fa, the Taverne amendment). This provision does not affect copyright ownership. Unless copyright is transferred by contract or statute, it remains with the copyright holder.

Sharing and reuse

Other than for strictly personal use, it is not permitted to download, forward or distribute the text or part of it, without the consent of the author(s) and/or copyright holder(s), unless the work is under an open content license such as Creative Commons.

Takedown policy

Please contact us and provide details if you believe this document breaches copyrights. We will remove access to the work immediately and investigate your claim.

This work is downloaded from Delft University of Technology.

Leveraging data for energy efficiency and climate resilience

Mosteiro-Romero, Martín

Publication date

2025

Document Version

Final published version

Citation (APA)

Mosteiro-Romero, M. (2025, Apr). Leveraging data for energy efficiency and climate resilience. National University of Singapore. <https://cde.nus.edu.sg/nuscities/creature-comforts-and-climate-resilience-newsletter-issue-4/>

Important note

To cite this publication, please use the final published version (if applicable). Please check the document version above.

Copyright

Other than for strictly personal use, it is not permitted to download, forward or distribute the text or part of it, without the consent of the author(s) and/or copyright holder(s), unless the work is under an open content license such as Creative Commons.

Takedown policy

Please contact us and provide details if you believe this document breaches copyrights. We will remove access to the work immediately and investigate your claim.



Leveraging data for energy efficiency and climate resilience

More smart data from sensors and other devices will make it easier to see what kind, and how much, of energy each building needs, based on how the occupants adjust energy usage to their own comfort. Can such data-driven models help urban planners create even more flexible workspaces for a climate-resilient future?



Dr Martín Mosteiro Romero, Postdoctoral researcher in the Department of Architectural Engineering and Technology at the Technical University in Delft, was previously a postdoctoral research fellow at NUS, working on an urban digital twin to help improve the resilience of building systems and their occupants' wellbeing.

In the context of the global climate crisis, the world's cities are facing a twofold challenge. On the one hand, there is a need to increase building energy efficiency and reduce carbon emissions in order to contribute to climate change mitigation. On the other hand, increasing temperatures in urban areas pose a risk to human health, particularly during extreme weather events, and therefore, the built environment needs to adapt to climate change in order to ensure the wellbeing of the buildings' occupants.

At the same time, data is now increasingly available from a variety of sources in urban areas, including smart meters, telecommunications providers, sensors and Internet-of-Things devices.

Such information can help with more informed planning decisions, and adjust operations to the changing needs of building occupants. Urban Digital Twins seek to combine these large-scale data sources along with simulations in order to support decision-making in both planning and operating sustainable urban districts.

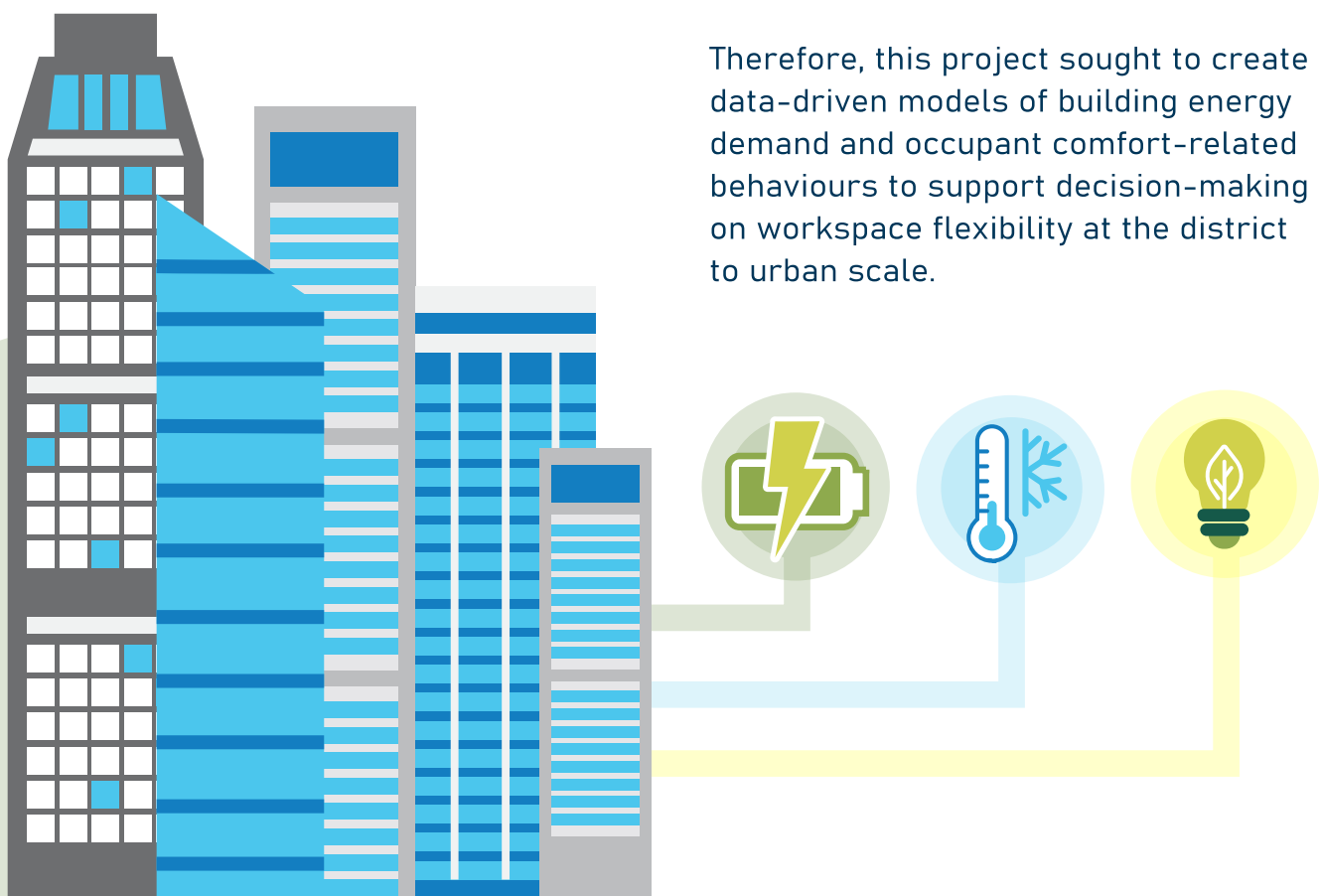
This project leverages cross-scale datasets, including campus-scale WiFi records, building energy demands, and subjective thermal comfort feedback data from building occupants, to develop models to support energy efficiency and climate at the district to urban scale.

In particular, the potential was explored for operational flexibility to maximise energy efficiency while providing comfort for different users at the district scale.

In the workplace, the increasing prevalence on flexible work arrangements, in which people no longer have a single workspace, but can share different spaces or even work remotely based on any given day, presents potential challenges, as building systems are typically designed to be operated under the assumption of full capacity.

However, flexibility also presents an opportunity to create workspaces that support the needs of different occupants, allowing people to choose environments that match their personal needs and comfort preferences.

Therefore, this project sought to create data-driven models of building energy demand and occupant comfort-related behaviours to support decision-making on workspace flexibility at the district to urban scale.



Occupant-driven district operation for energy efficiency and climate resilience

In order to demonstrate the potential of operational flexibility [1], a building energy demand model was developed of the NUS campus, using the software tool, [City Energy Analyst \(CEA\)](#). CEA is an urban building energy modeling (UBEM) platform, as well as one of the first open-source initiatives of computation tools, for the design of low-carbon and highly energy-efficient cities.

Building-scale cooling and electricity demand data was then used to calibrate the building energy demand model, while campus-scale WiFi records helped to incorporate the varying occupancy patterns of different buildings into this model.

This baseline was then compared to scenarios in which different shares of occupants were working remotely, as well as with three different building operation strategies: a status quo building system; a scenario in which cooling systems were operated only based on actual occupancy; and an elastic allocation scenario, in which occupants would book their workspaces on campus.

Thus, just like the power grid, only the most efficient buildings would be operated during partial occupancy, with inefficient buildings used only during peak demand (i.e., at full occupancy).



Figure 1: Blue squares represent sections of the building operating their cooling systems. In buildings with centralised cooling, cooling requires the same amount of energy regardless of occupancy. In the other two conditions, cooling systems only switch on when sensors detect occupants in that area of the building (zone-based occupant-driven) or users book the space beforehand (elastic space allocation).

The results showed that the energy demand of buildings without occupant-driven controls would not be strongly affected by building occupancy, and therefore merely incorporating these sensing technologies would significantly reduce space cooling demand at the district scale.

The implementation of elastic space allocation policies, on the other hand, would allow the operation of the least energy-efficient buildings to be avoided unless absolutely necessary, thus leading to further reductions in the building energy demand.

City Energy Analyst (CEA)

CEA is a set of open-source tools that enable people to analyse and optimise the energy use of buildings and districts.

For more details, [visit their site](#).

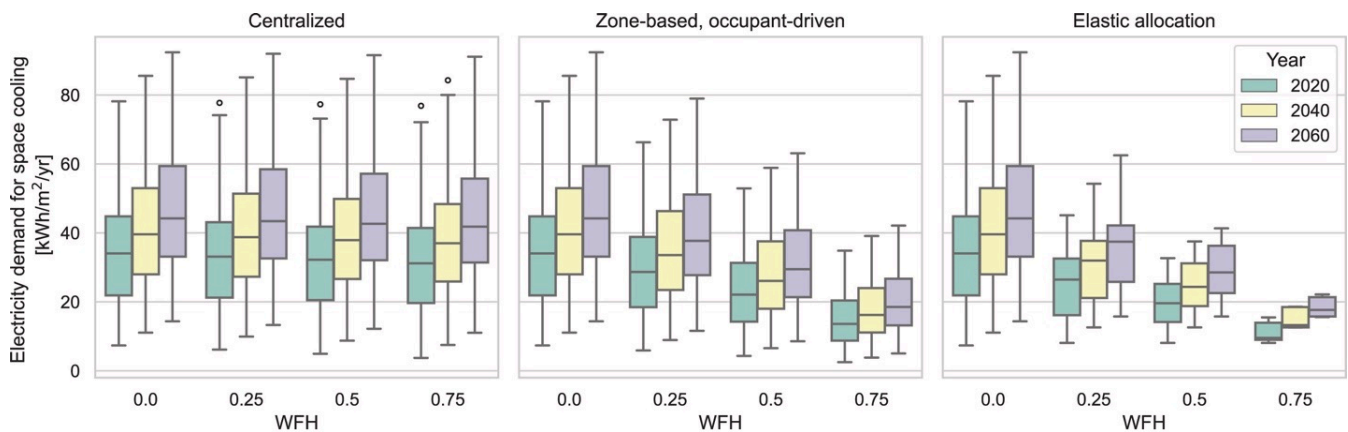


Figure 2: Centralised cooling systems use the same amount of energy regardless of occupancy. In contrast, energy use decreases with occupancy when buildings use zone-based, occupant driven cooling systems or elastic allocation models. The ability of elastic space allocation to limit occupants to first book spaces in the most energy efficient buildings enables it to achieve further reductions in energy use.

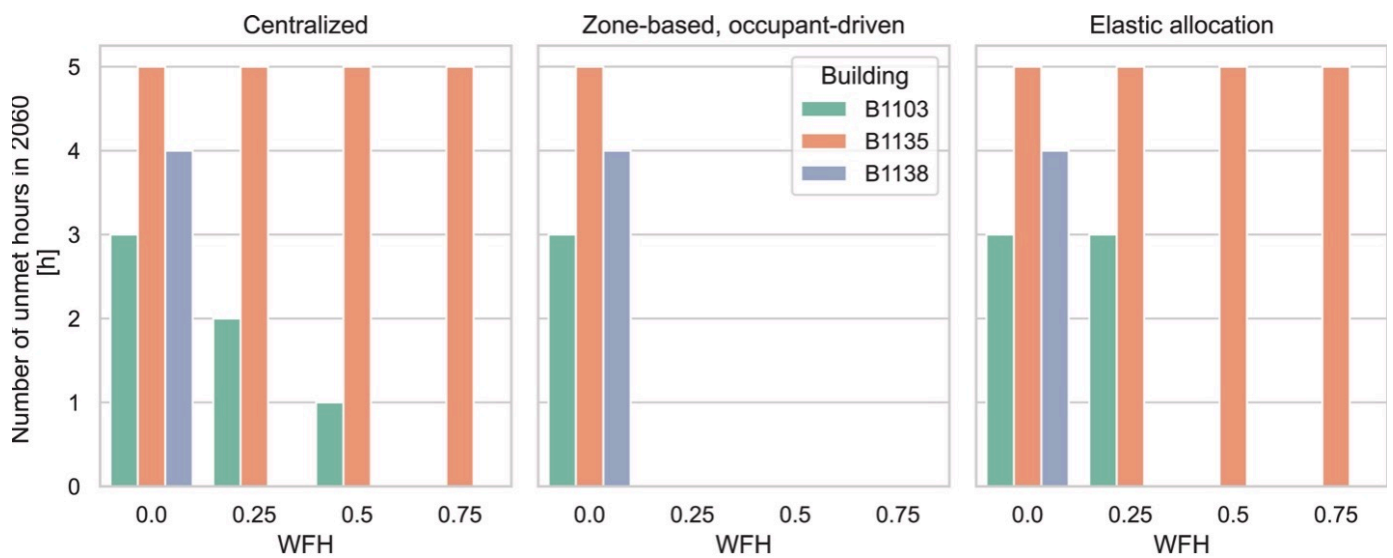


Figure 3: While elastic space allocation policies does lead to a greater reduction of energy use overall, the maximisation of use of the most energy efficient spaces leads to some difficulty meeting cooling demands. The author recommends that implementing occupant-driven controls could enable buildings to better meet peak demand.

Looking at future performance, when the numbers of unmet load hours for the cooling systems (i.e., the hours when building systems could not cope with the demand) were compared, for the baseline operation strategy, some of the buildings' systems could not cope with demand for some hours by 2040, even at low occupancy.

Implementing occupant-driven controls ensured that this problem was avoided for all but full occupancy.

However, since the elastic allocation strategy ensured space use in energy efficient buildings was maximised, additional cooling capacity for that scenario was needed, as well.

Therefore, the implementation of occupant-driven controls could also support the resilience of these buildings.

Agent-based modeling of occupants: Crowdsourcing data for personal comfort and energy efficiency

A second study [2] sought to investigate how workspace flexibility could support building occupants' thermal comfort, and how building operation could be adjusted to best support this goal while increasing energy efficiency.

For this purpose, an agent-based model of building occupants was created at campus scale, again leveraging campus-scale WiFi data as well as subjective thermal comfort feedback data collected through the smartwatch application Cozie.

With this model, the daily activity and location choices of students and employees at NUS were mimicked, as well as their thermal preferences as a function of building indoor temperature.

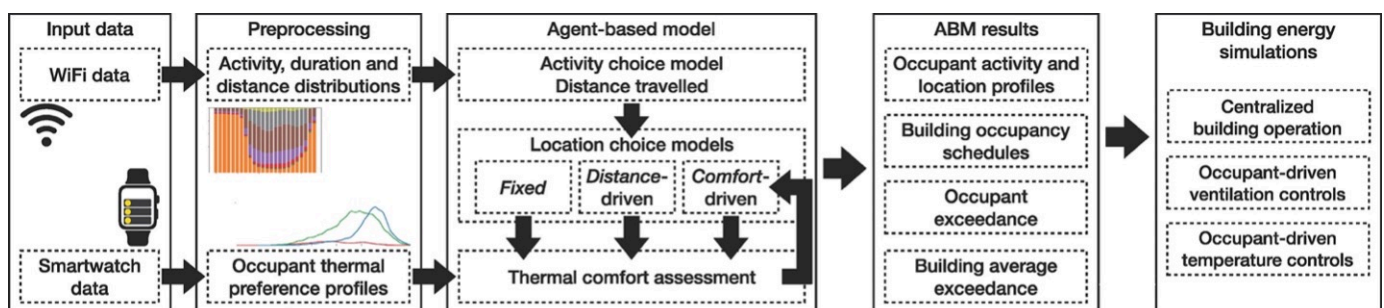


Figure 4: The diagram summarises how the researchers created an agent-based model, that incorporates data on people's activity in buildings and their thermal comfort, to inform their building simulations.

A comparison was then made of the status quo (in which building occupants have specific assigned spaces where they would work or study) with scenarios in which occupants could flexibly choose the location for these activities in order to minimise the distance traveled between activities, or to maximise their comfort.

The campus energy demand model discussed above was then used to analyse different building operation strategies to support this transition.

Varying indoor temperatures in different buildings on campus were explored to provide different indoor environments to satisfy the diverse thermal preferences of building occupants.

The use of occupant-driven ventilation and cooling system operation strategies were also explored in order to minimise energy consumption.

Through this approach, it was estimated that occupants' exceedance (defined as the number of hours that occupants spent in uncomfortable conditions) could be reduced by around 10% with these flexible allocation strategies, without a significant increase in building cooling demand. Furthermore, any increase in cooling demand was far outweighed by the savings obtained through the implementation of occupant-driven controls for the ventilation and cooling of the buildings.

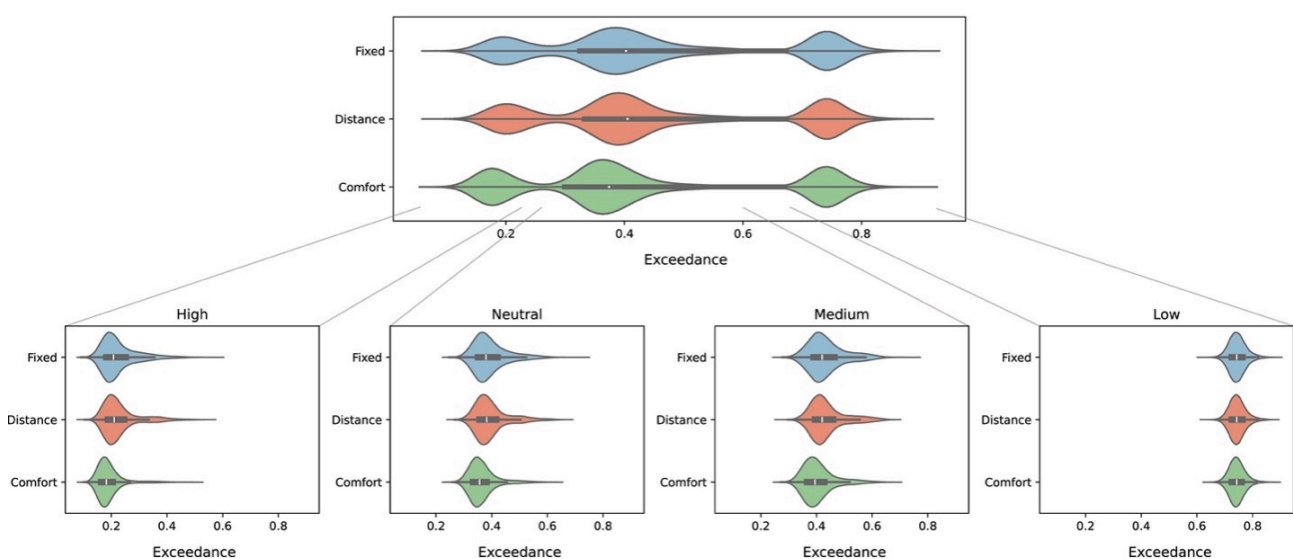


Figure 5: The charts show how long an occupant feels uncomfortable depending for on whether they remain fixed in a building, moved around to minimise the distance travelled to complete their activities, or moved around to maximise their comfort.

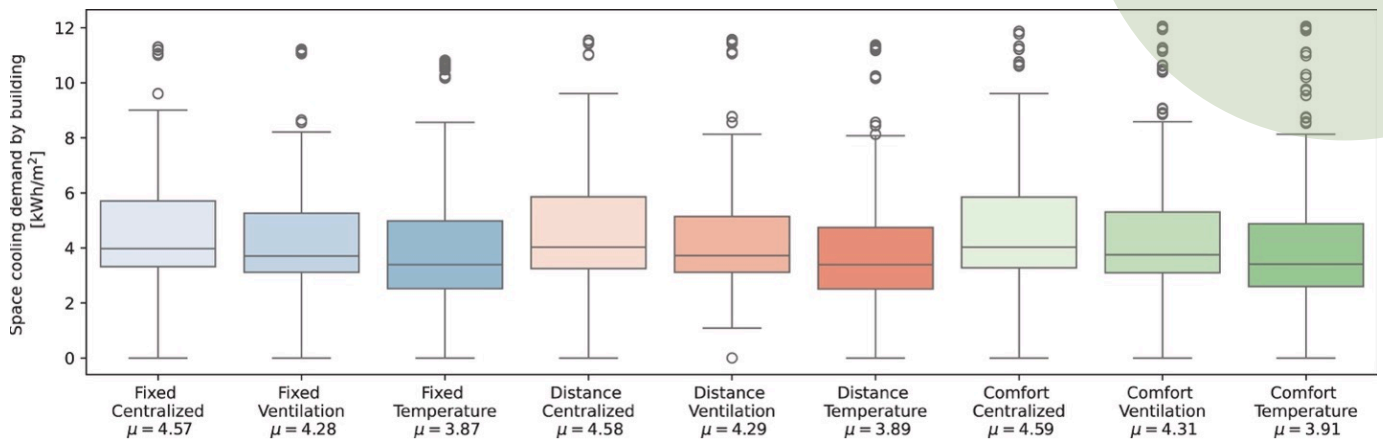


Figure 6: The plots how differences in cooling systems and how much a buildings' occupants are moved around affects the energy demand for cooling in the building.

These two works demonstrate the potential for combining cross-scale data sources towards the planning and the operation of climate-resilient buildings that minimise cooling demand while supporting the thermal comfort needs of users in flexible working and studying arrangements in a simulated environment.

Incorporating these models into an urban digital twin [3] can provide decision-makers (such as facilities management, system operators and urban planners) with a user-friendly platform to explore these different scenarios, and to choose strategies to meet the goals of climate change adaptation and mitigation.

The increasing availability of open-access urban scale datasets has since allowed for expanding the scope from the district to the urban scale [4, 5], which opens up exciting opportunities to pursue further opportunities to support decarbonisation and wellbeing in urban areas.

References

1. M. Mosteiro-Romero, C. Miller, A. Chong and R. Stouffs, "Elastic buildings: Calibrated district-scale simulation of occupant-flexible campus operation for hybrid work optimization," *Building and Environment* 237, 110318, 2023.
2. M. Mosteiro-Romero, M. Quintana, R. Stouffs and C. Miller, "A data-driven agent-based model of occupants' thermal comfort behaviors for the planning of district-scale flexible work arrangements," *Building and Environment* 257, 111479, 2024.
3. P. Alva, M. Mosteiro-Romero, W. Pei, A. Bartolini, C. Yuan and R. Stouffs, "Bottom-up Approach for Creating an Urban Digital Twin Platform and Use Cases," in *HUMAN-CENTRIC, Proceedings of the 28th International Conference of the Association for Computer-Aided Architectural Design Research in Asia (CAADRIA)*, Ahmedabad, India, 2023.
4. M. Mosteiro-Romero, Y. Park and C. Miller, "Converging Smartwatch and Urban Datasets for Sustainable City Planning: A Case Study in Seoul, South Korea," *E3S Web of Conferences* 562, 03004, 2024.
5. P. Alva, M. Mosteiro-Romero, C. Miller and R. Stouffs, "Mitigating operational greenhouse gas emissions in ageing residential buildings using an Urban Digital Twin dashboard," *Energy & Buildings* 322, 114681, 2024.