



# Adapting care robot Tessa for early-stage dementia with implementation through general practitioners

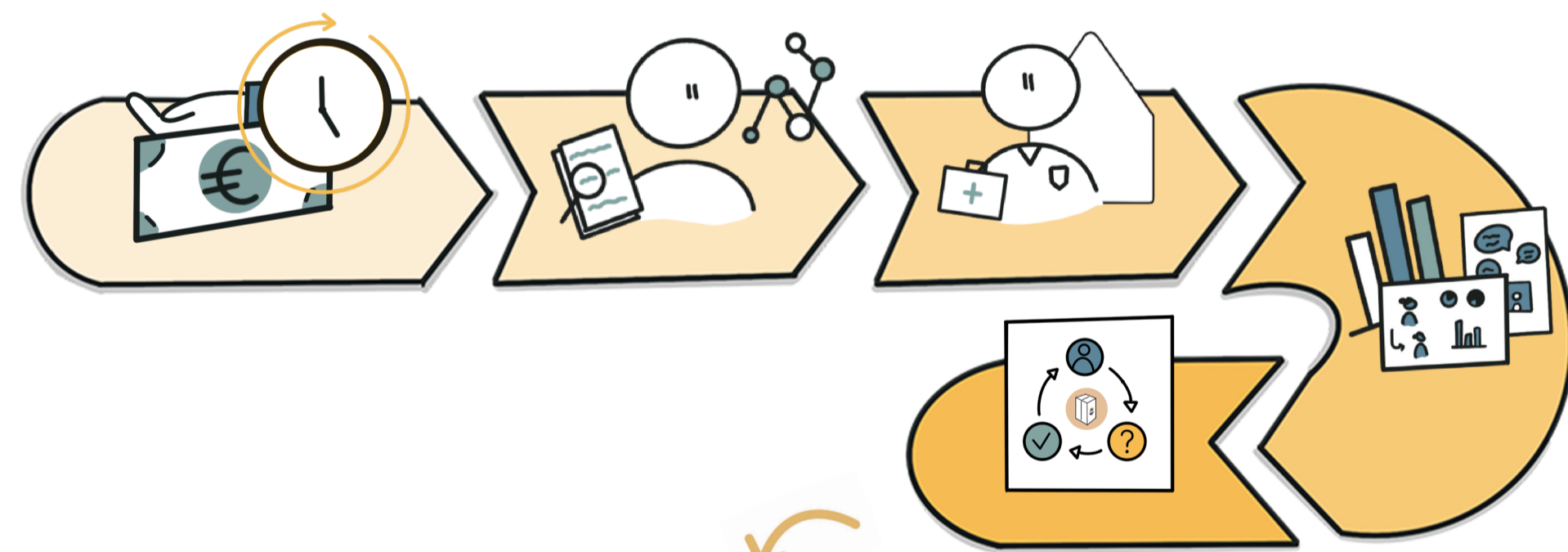
Tessa is a social, assistive **care robot** from the company Tinybots, designed to support people with **dementia** and other mild cognitive impairments. By giving **verbal reminders** and **instructions**, Tessa supports **self-management** and independent living.

In this project, **two ways** to adapt Tessa to people with **early-stage dementia** are proposed. In the first part, a **distribution scenario** with the general practitioner as a starting point is developed. In the second part, a concept is developed with which Tessa can be used on someone's **own device**. Together with the addition of the functions of **personal voice messaging** and **audiobooks**, the **acceptance** of Tessa for people with early-stage dementia who find it hard to accept help is increased.

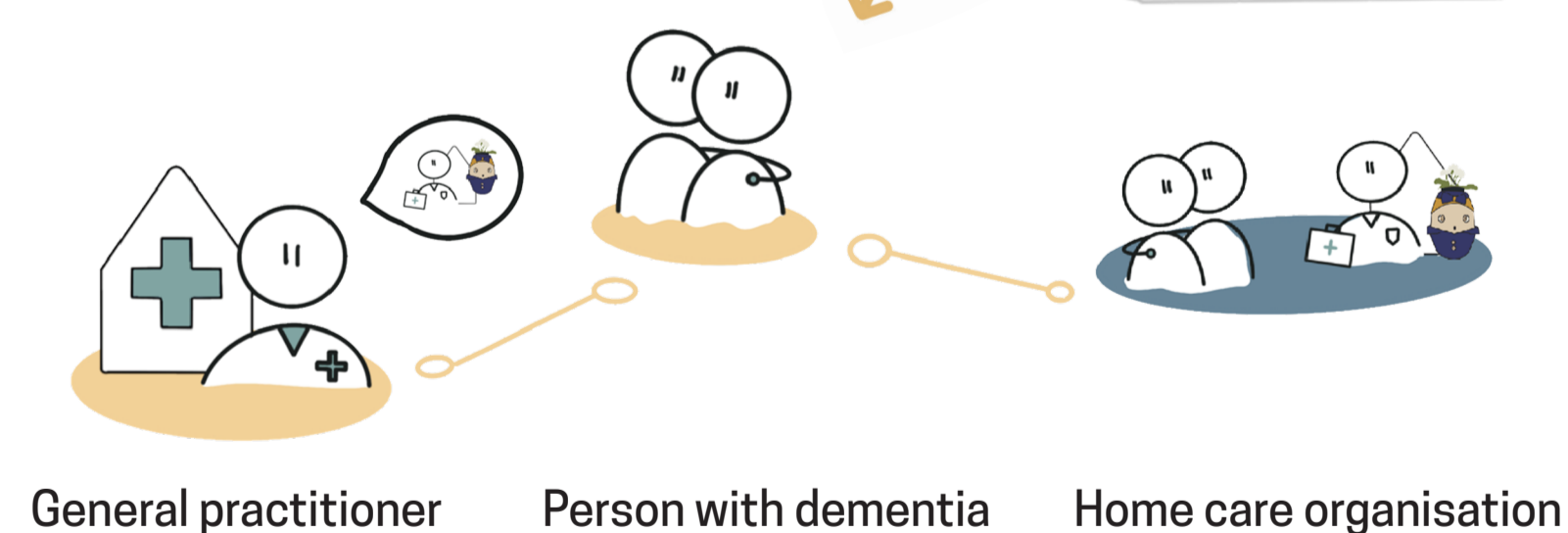
## Part 1 How can Tessa be implemented through general practitioners?

From interviews it became clear that general practitioners have very little time and financial support from insurances is not easily arranged.

Their involvement with dementia patients is for the large part limited to the beginning of the dementia process. After that care is quickly taken over by the casemanager and home care.



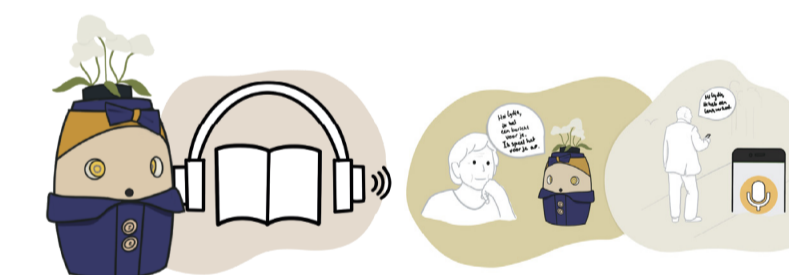
After careful consideration of multiple options, one distribution scenario was chosen. This scenario gives general practitioners the opportunity to support their dementia patients from very early on without having the financial and logistical responsibilities of the product.



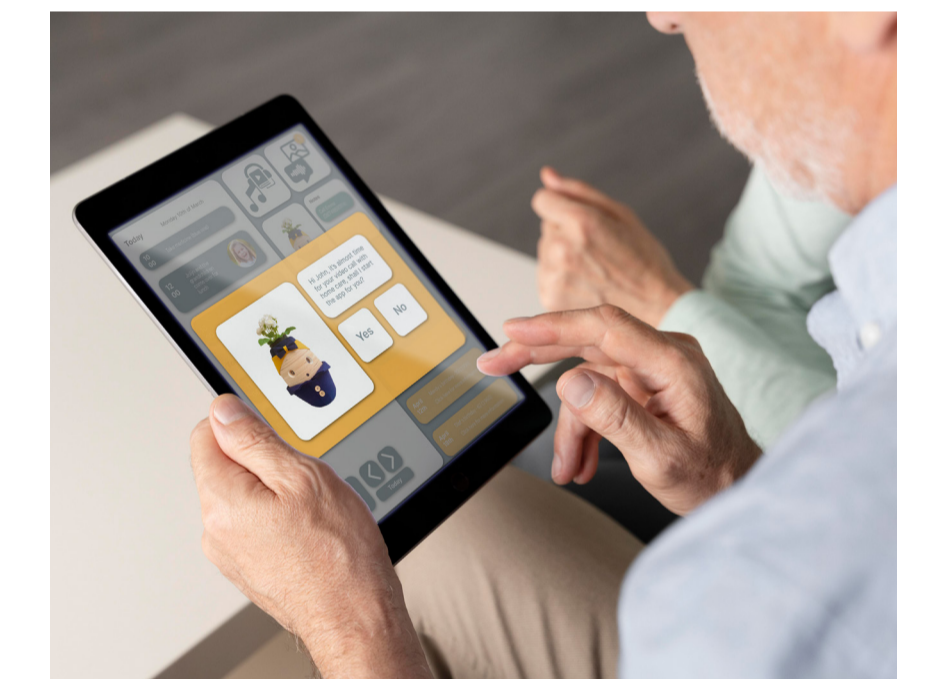
In this model, general practitioners give Tessa as an option to their patients and refer them to a home care organisation that works with Tessa. The home care organisation gives out and finances the Tessa.

## Part 2 How can acceptance of Tessa be increased for people with early-stage dementia?

For better social connectedness, focus on the positive side of aging and intellectual entertainment, the functions of audiobooks and personal voice messages were added.



To provide a better compatible way of offering Tessa, an app version was proposed. The app version of Tessa can provide support from early on and transition into a product that can provide care.



Rosa Elfering  
Adapting care robot Tessa for early-stage dementia with implementation through general practitioners  
17th of March, 2022  
Strategic Product Design, Medisign specialisation

**Committee**  
Sylvia Mooij  
Dave Murray-Rust  
Wang Long Li  
Jan-Willem Heeg  
**Company**  
Tinybots



Delft University of Technology