

Belle(re)vue

The Bellevue office building as a case study for post-1965 office transformation strategies

📷 Stegeman, 1978



Train station The Hague



© Gemeente Den Haag, n.d.



**Hoogte niet belangrijkst voor architect
230 meter hoge woontorens Den Haag:
'Gaat om aanzicht'**

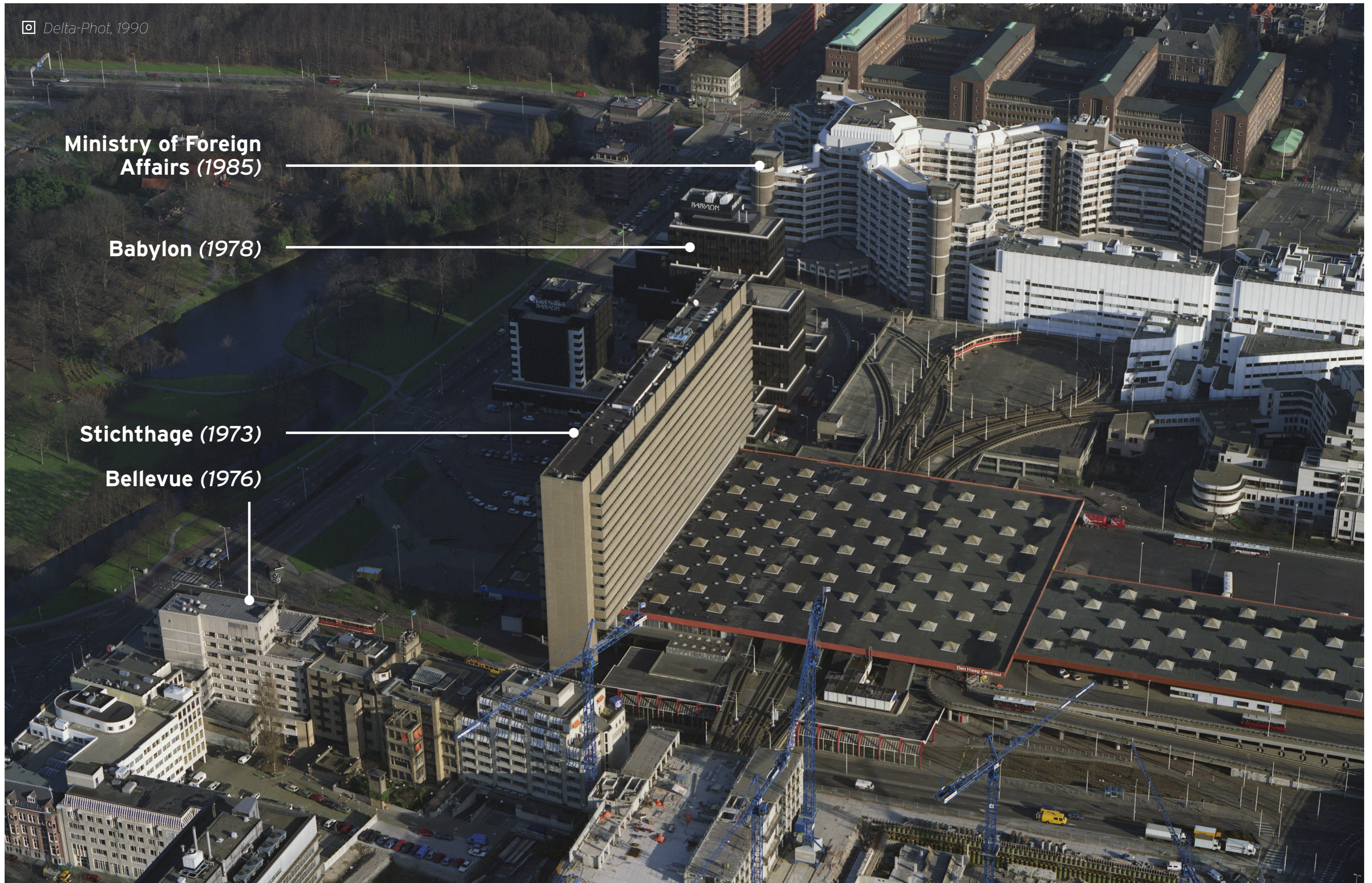
 Lieuwe van Slooten 14 april, 15:21 • Aangepast 14 april, 16:30 • 3 minuten leestijd



Table of contents

Transforming Bellevue

1. **Why?**
The relevance of Bellevue in its (historical) context
2. **How?**
Bellevue as joint between scales and political worlds
3. **Conclusion**

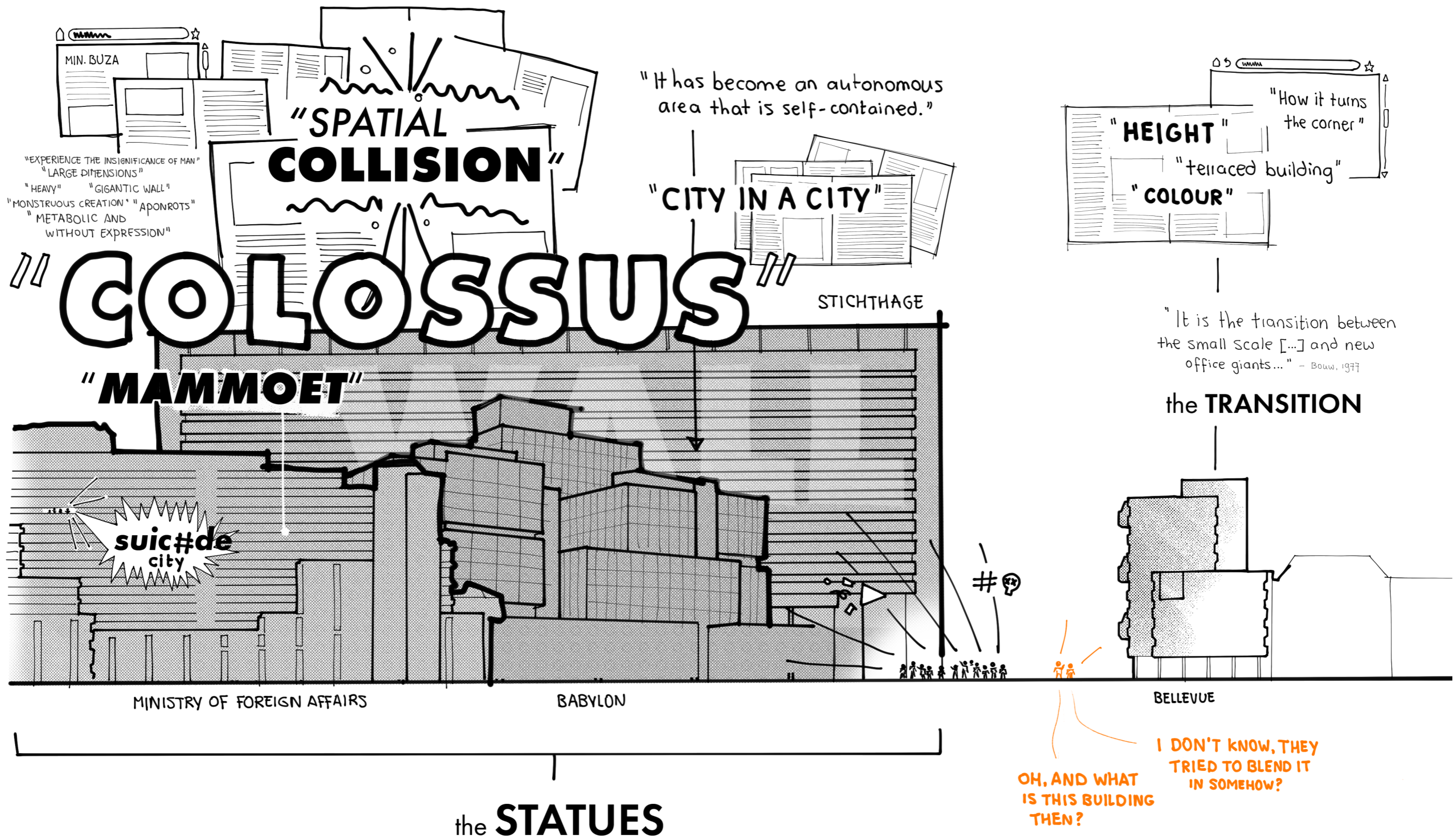


Ministry of Foreign
Affairs (1985)

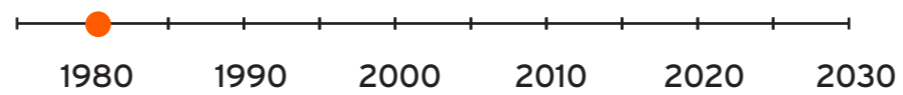
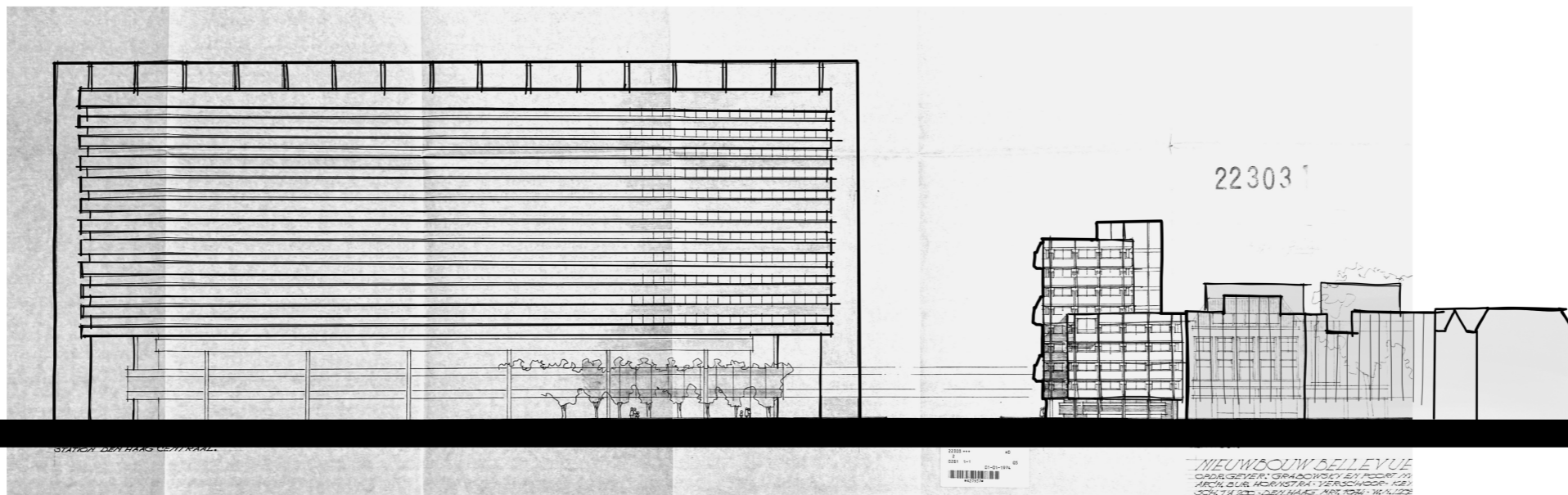
Babylon (1978)

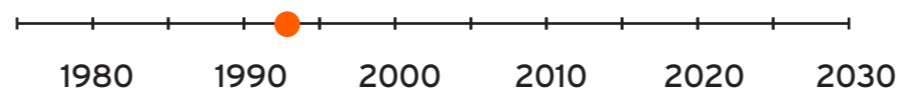
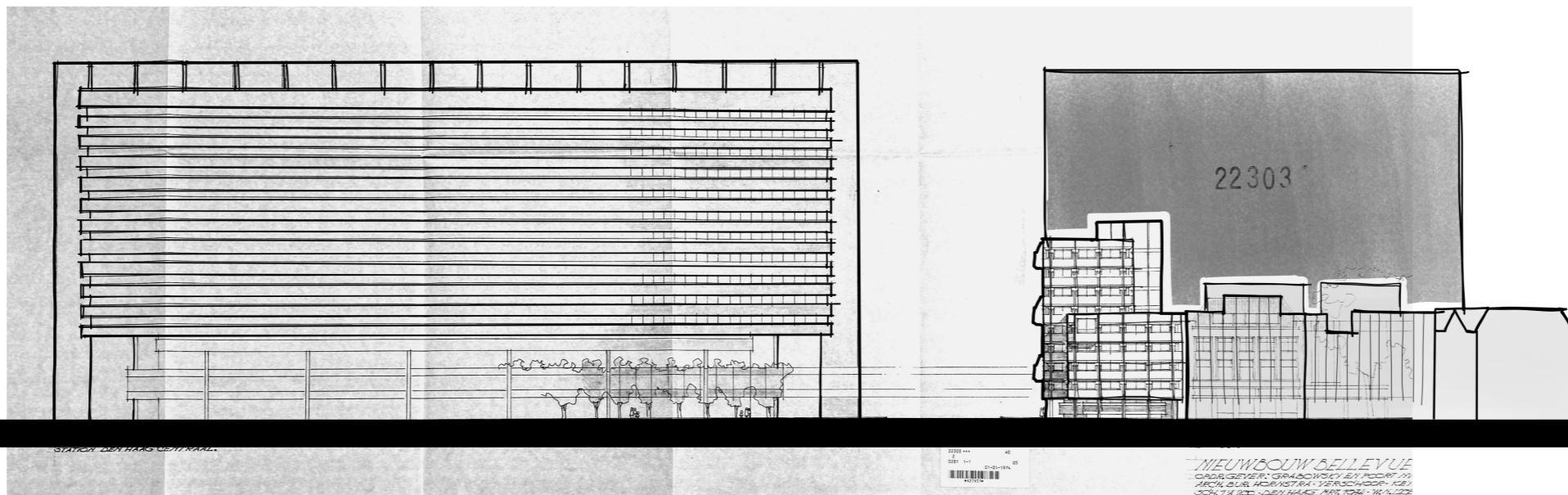
Stichthage (1973)

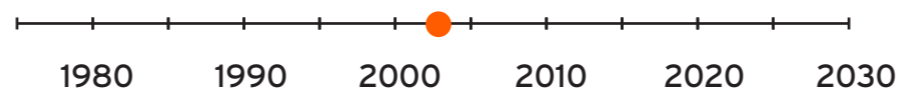
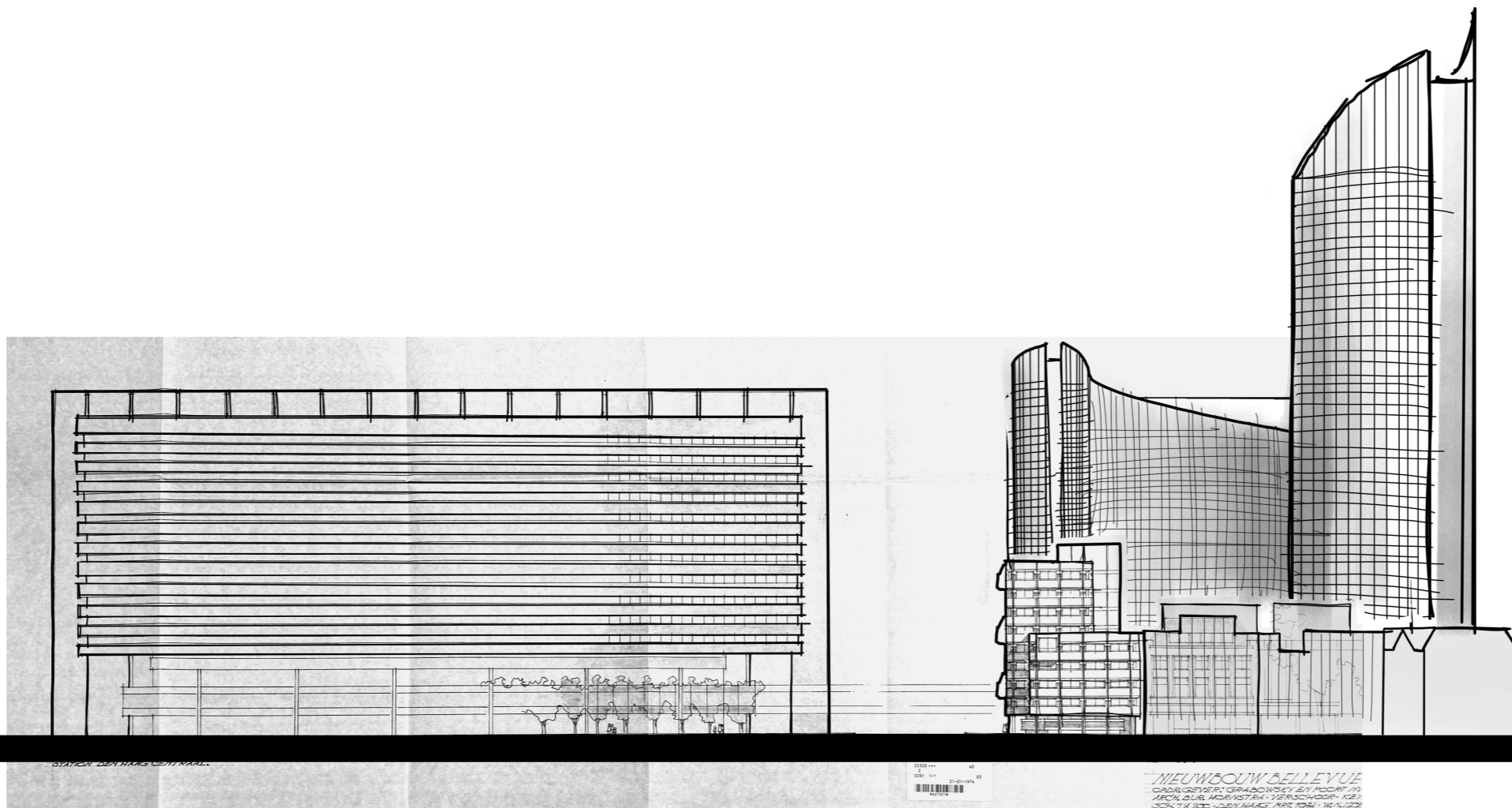
Bellevue (1976)

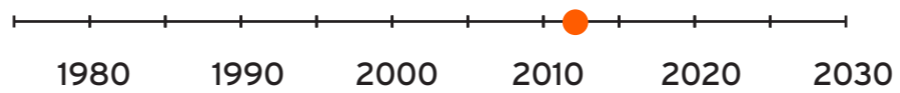
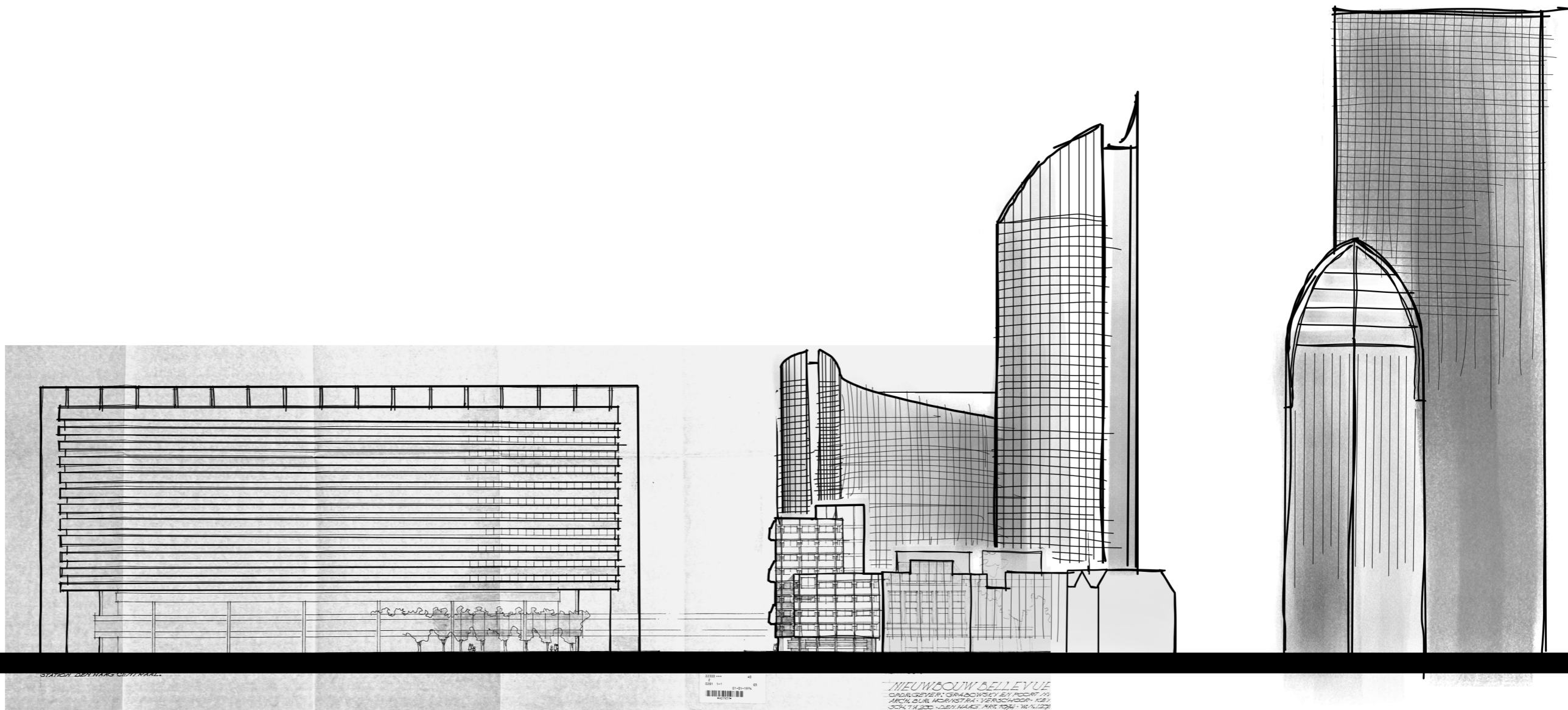


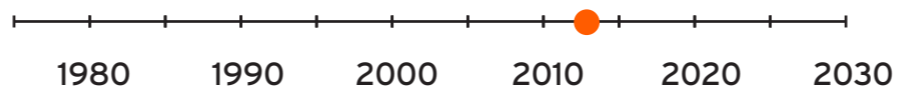
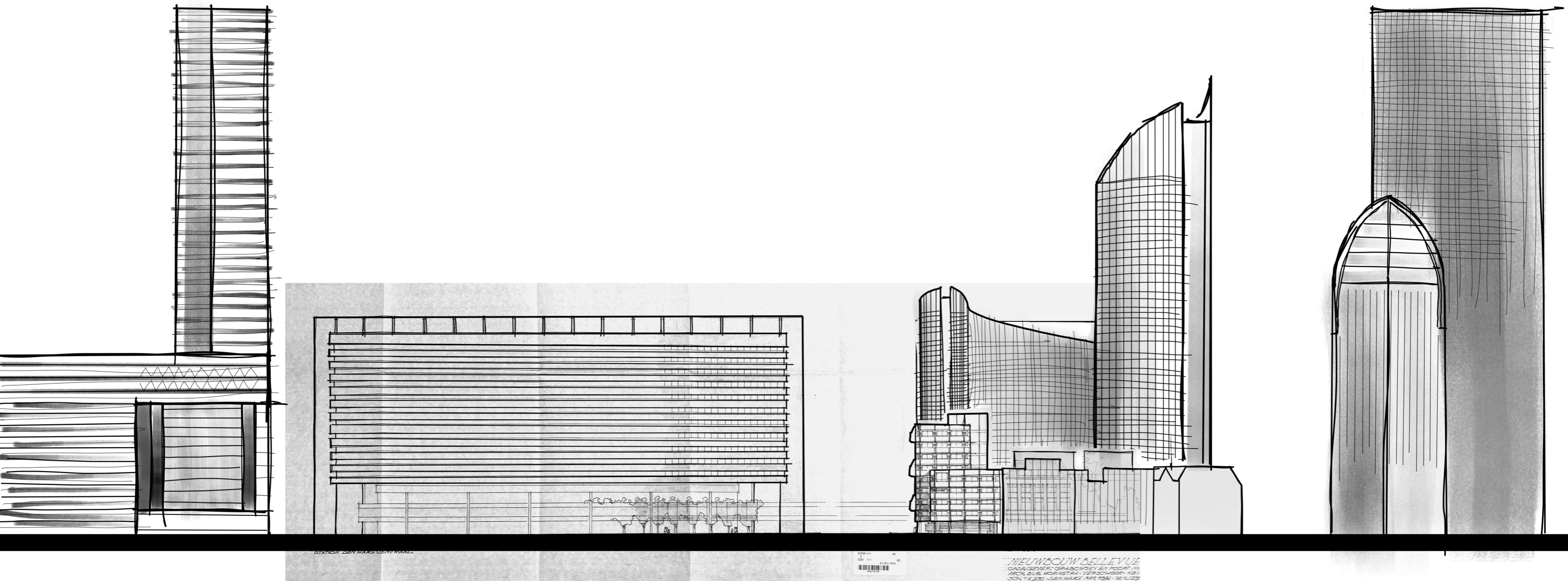
Analysis - cartoon of the perception of adjacent buildings

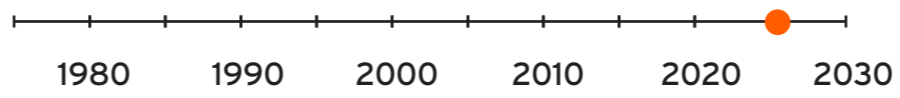
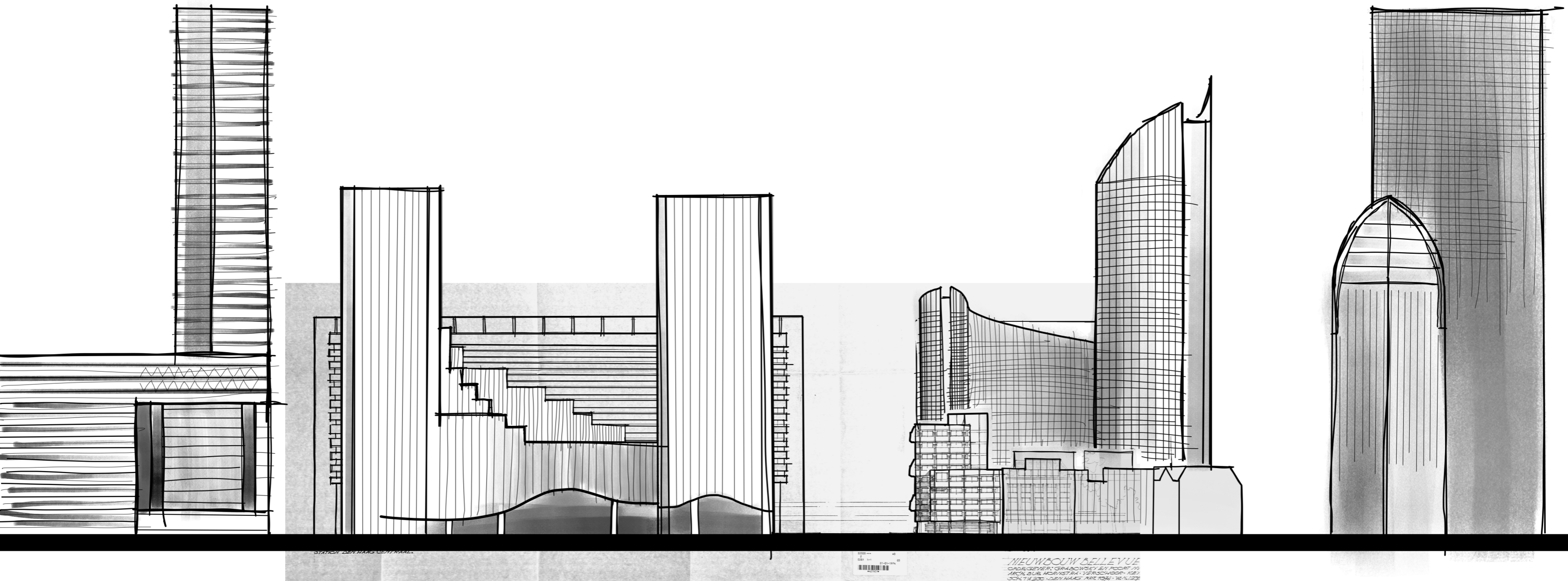


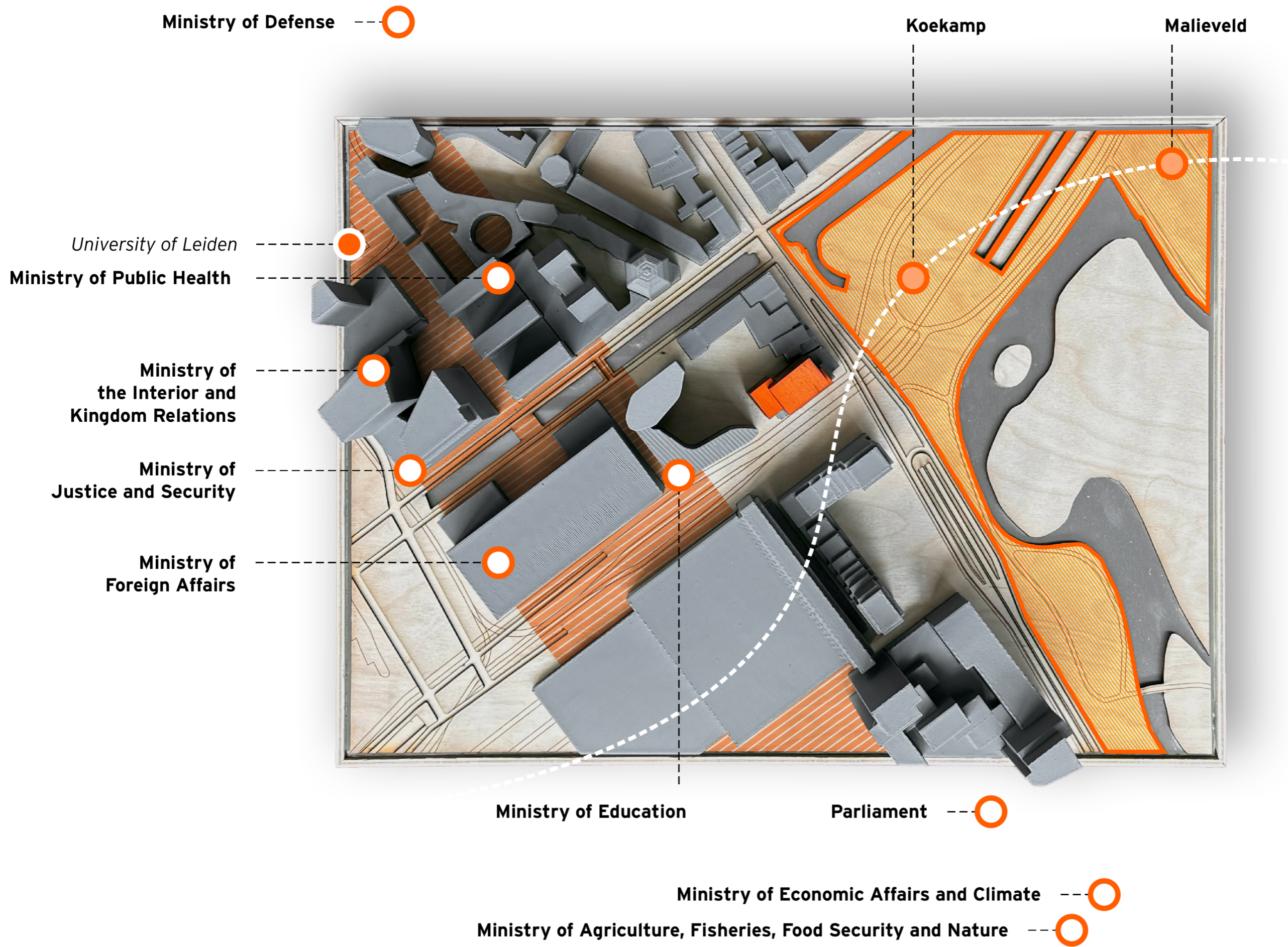




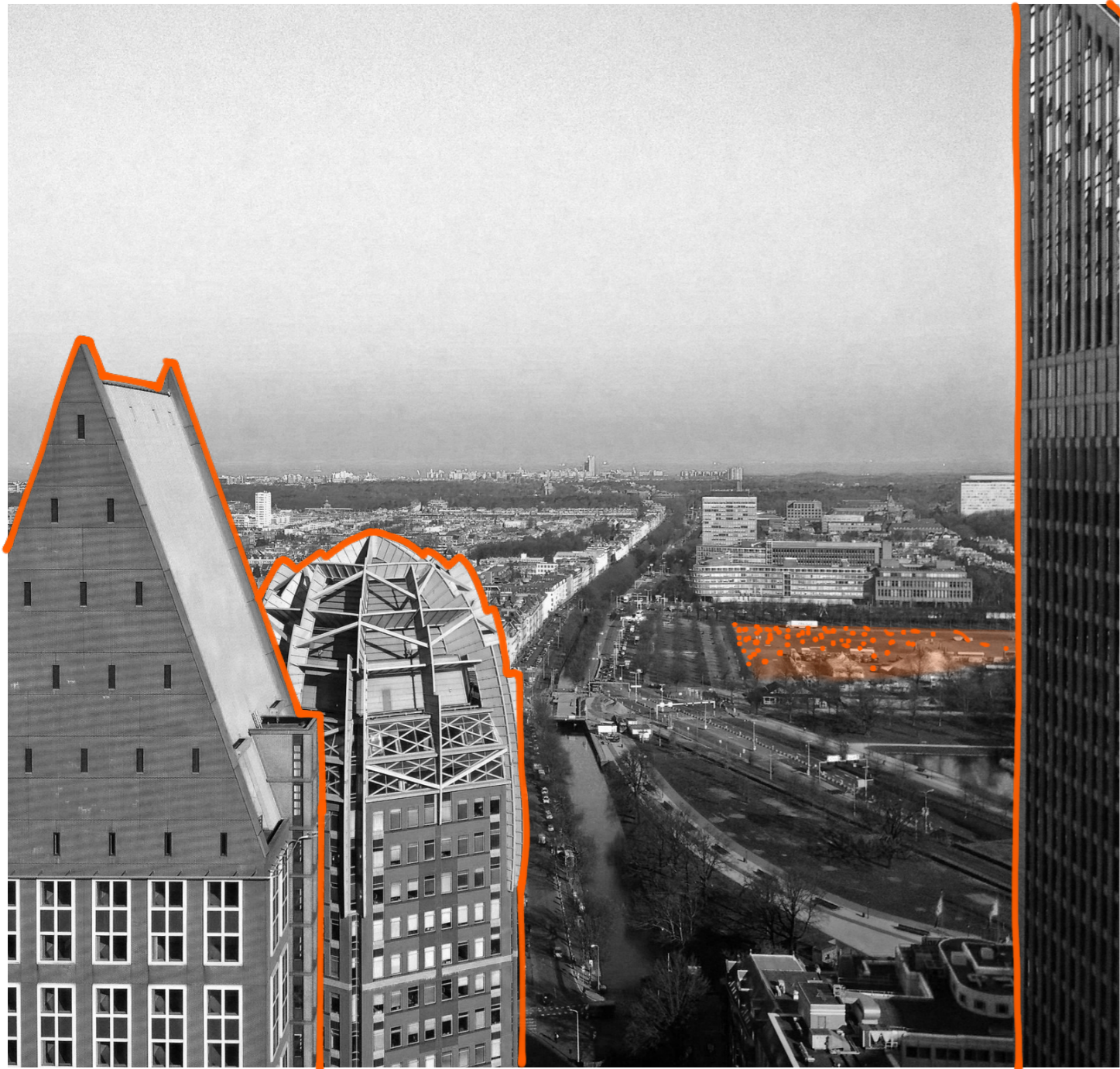








Establishment (*top-down*)



📍 Berkelaar, 2015

Political engagement (*bottom-up*)



📍 ANP, n.d.

Ministry of Defense --- ○

Koekamp

Malieveld

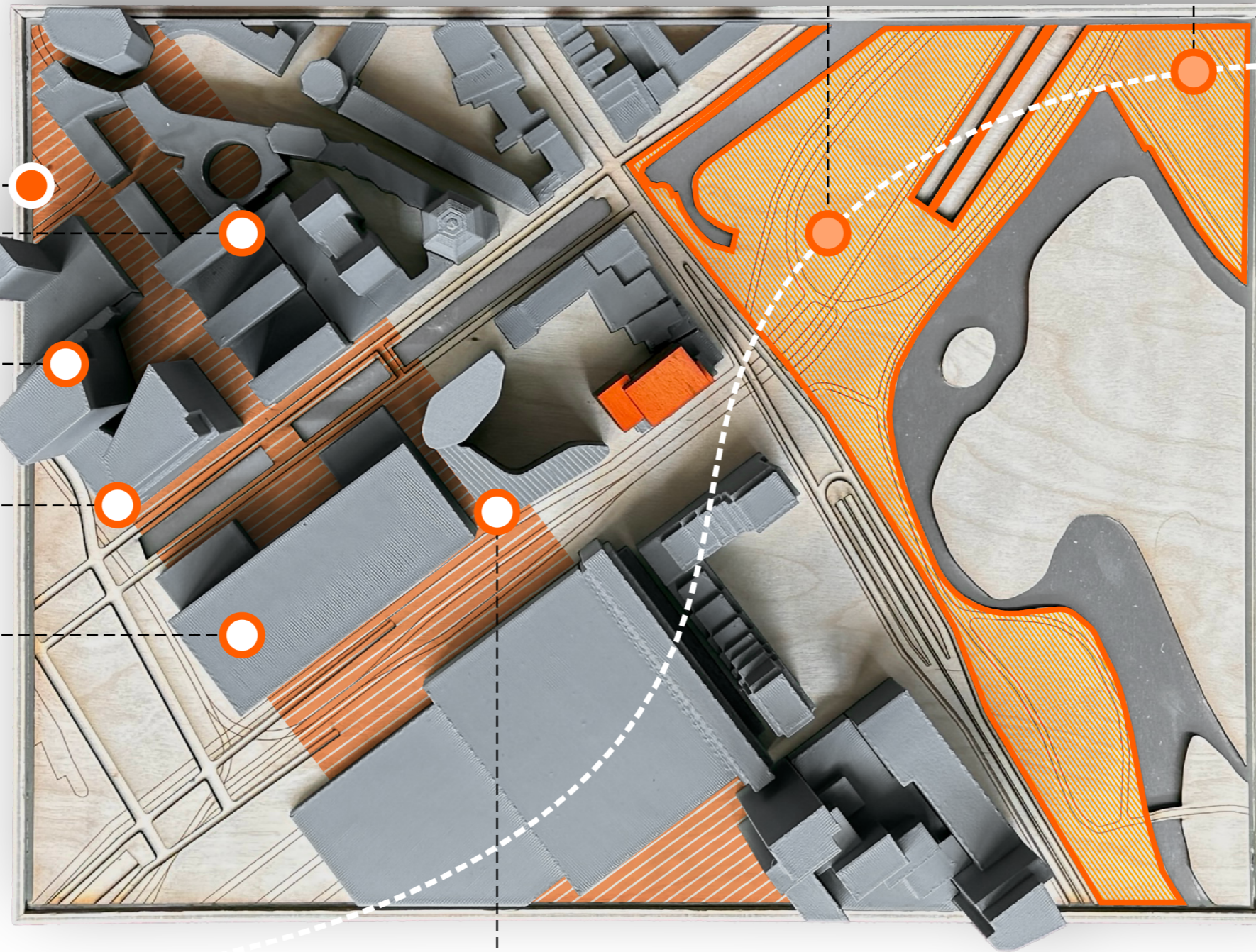
University of Leiden

Ministry of Public Health

Ministry of the Interior and Kingdom Relations

Ministry of Justice and Security

Ministry of Foreign Affairs



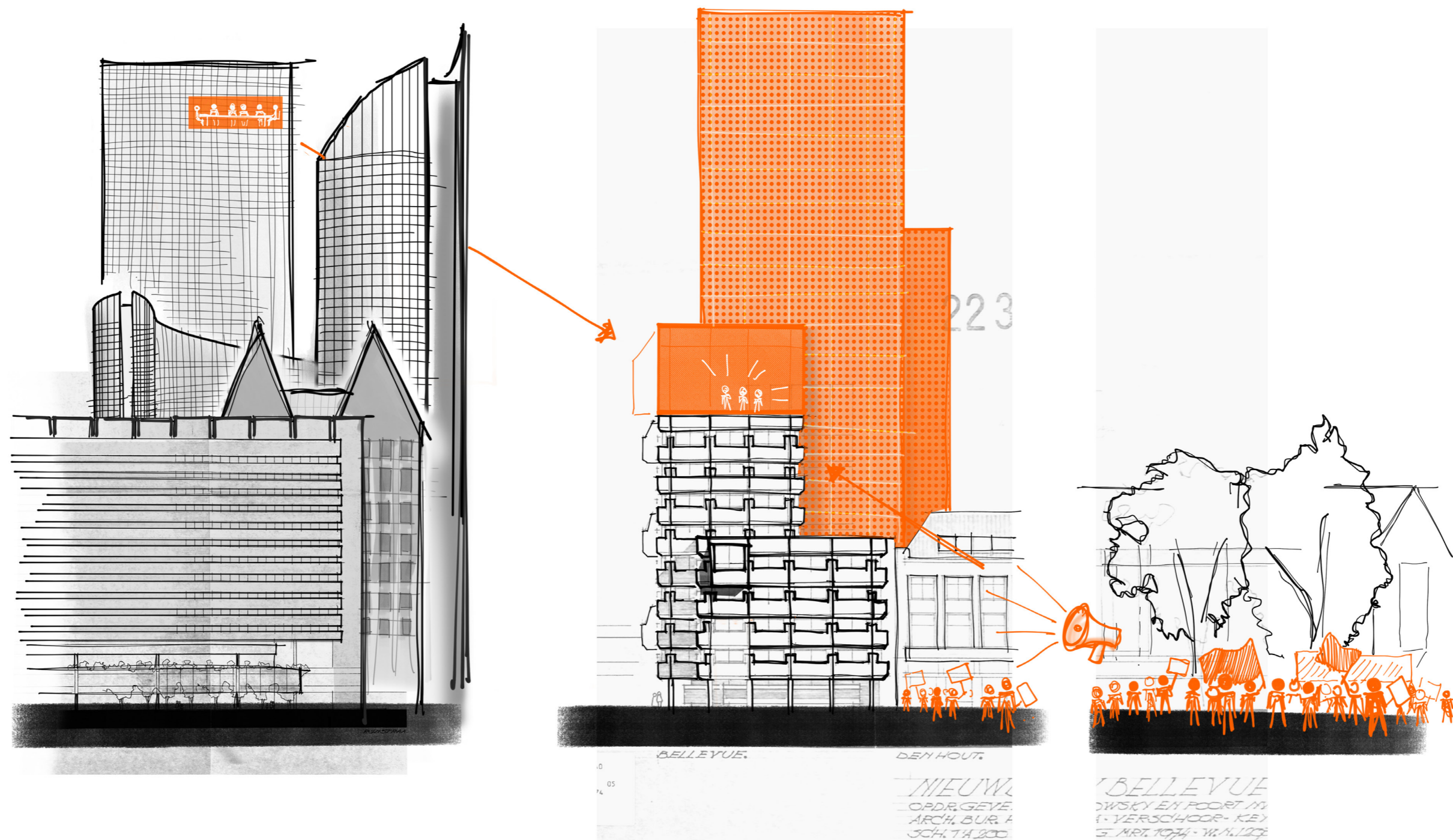
Ministry of Education

Parliament --- ○

Ministry of Economic Affairs and Climate --- ○

Ministry of Agriculture, Fisheries, Food Security and Nature --- ○



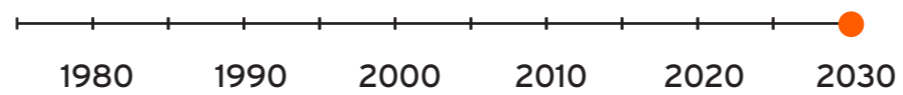
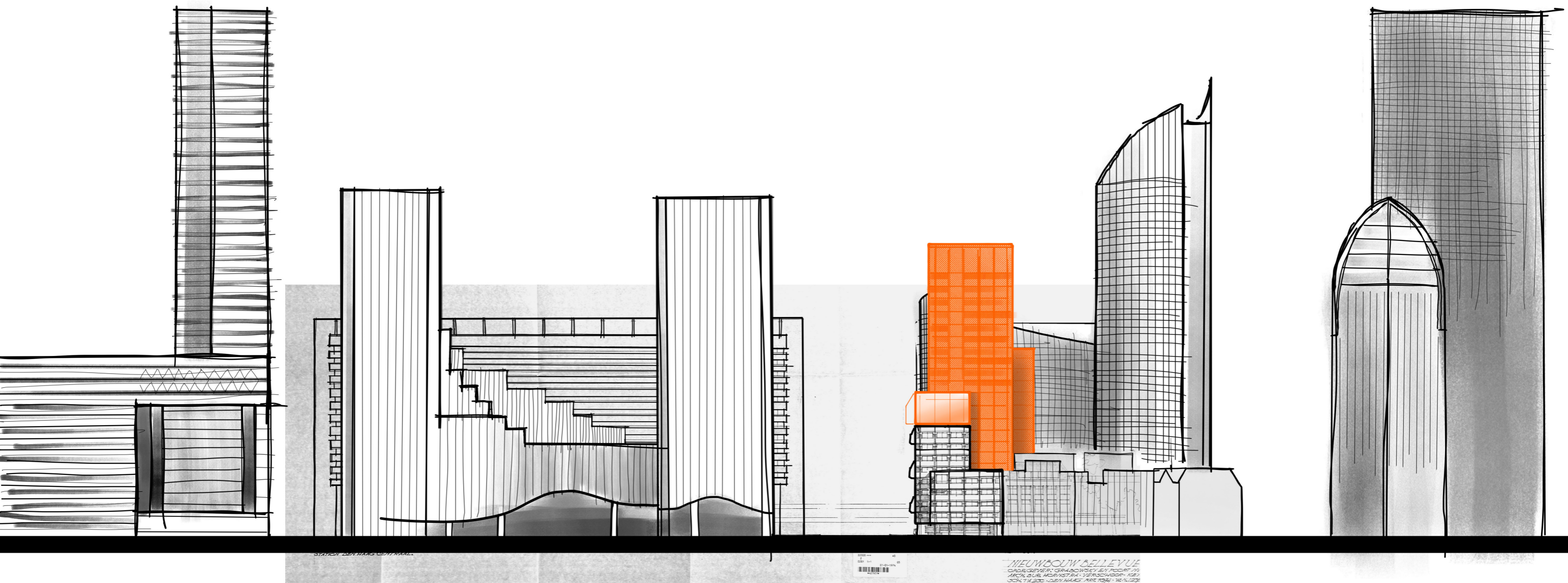


Belle(re)vue: joint between scales and political worlds

Belle(re)vue as joint

1. **Joint between scales**
2. **Joint between political worlds**
3. **Expression of the program**

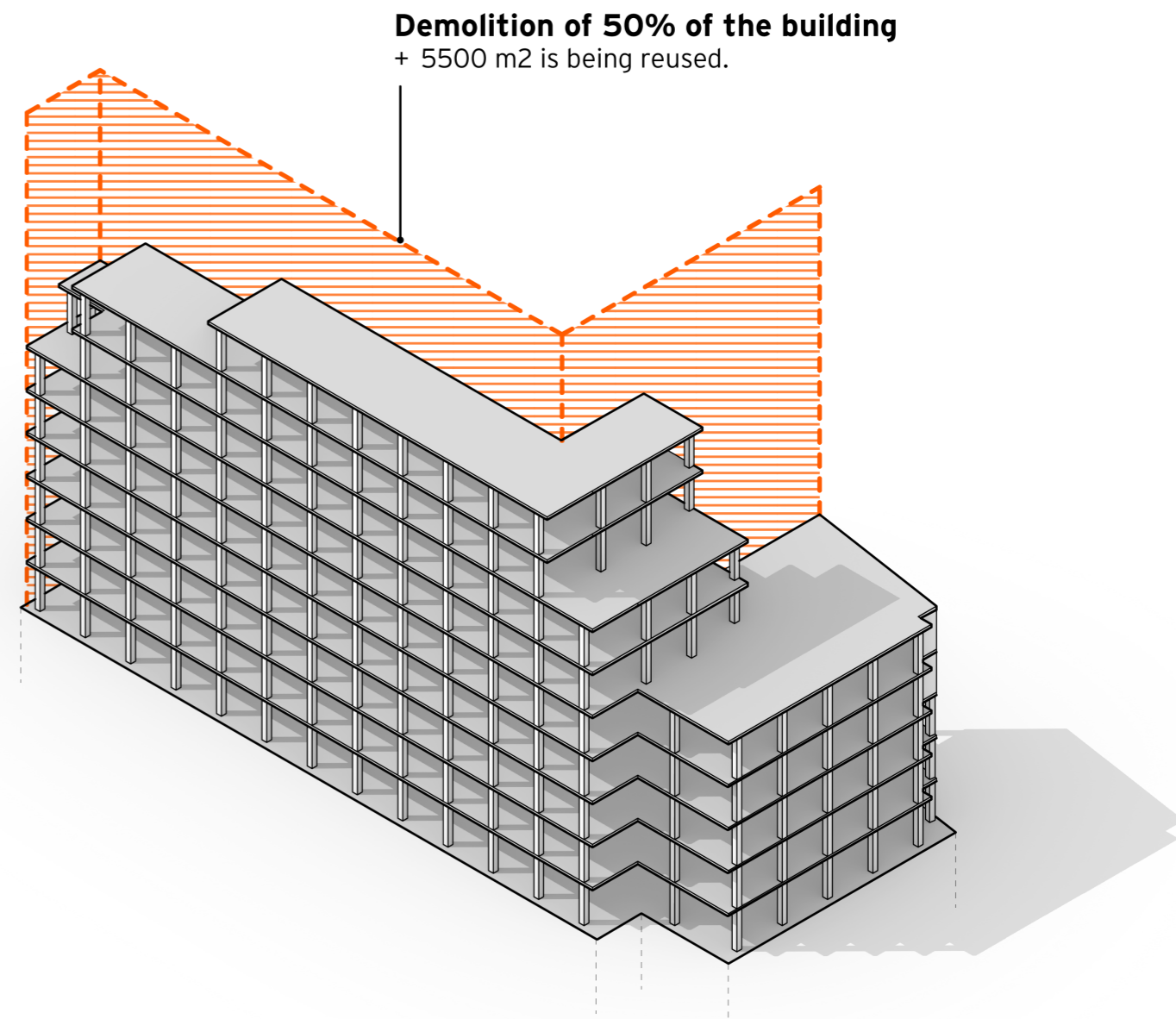
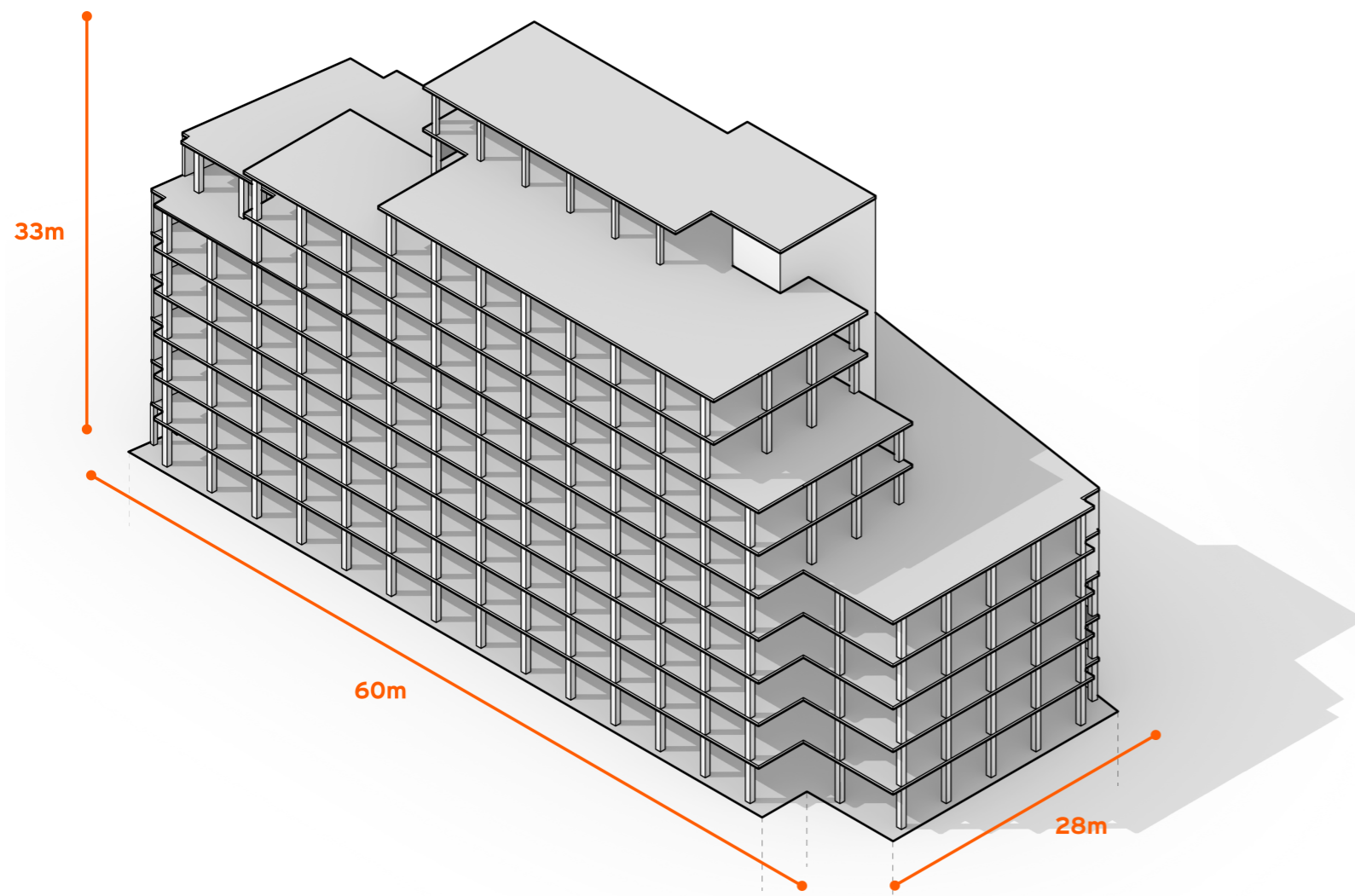
1. **Joint between scales**



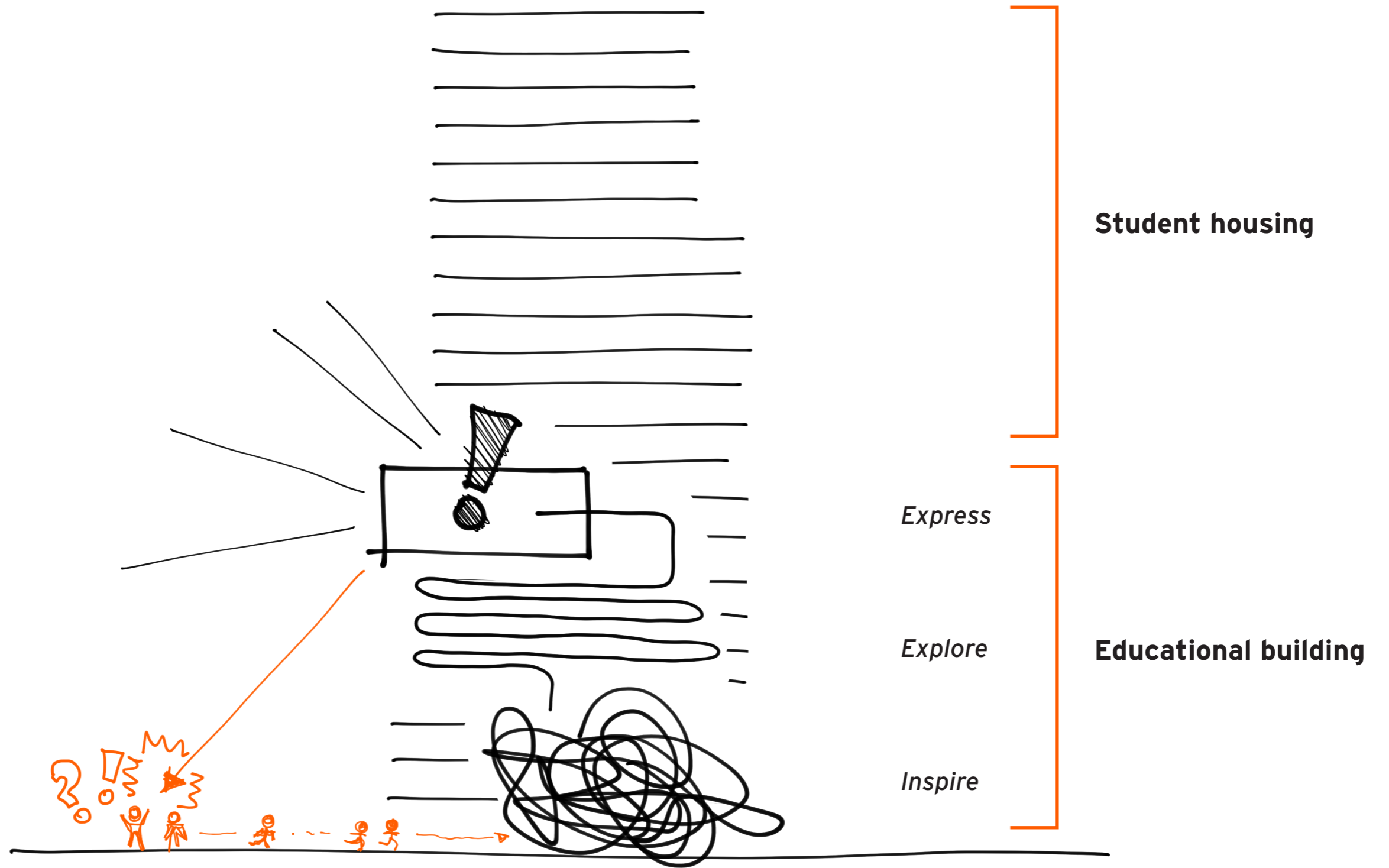
Joint between scales - elevation sketch

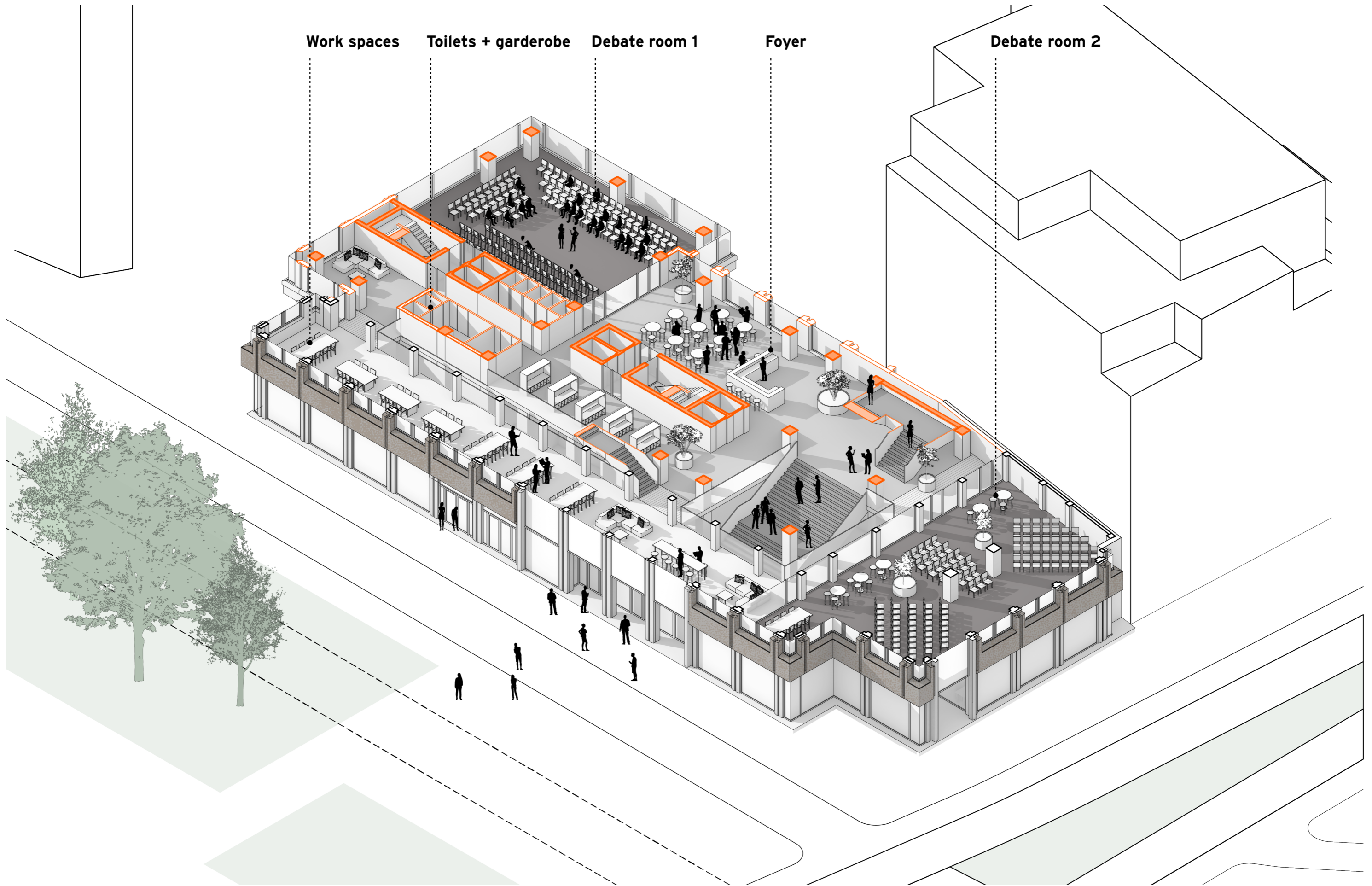


Joint between scales - model



2. **Joint between political worlds**





Work spaces

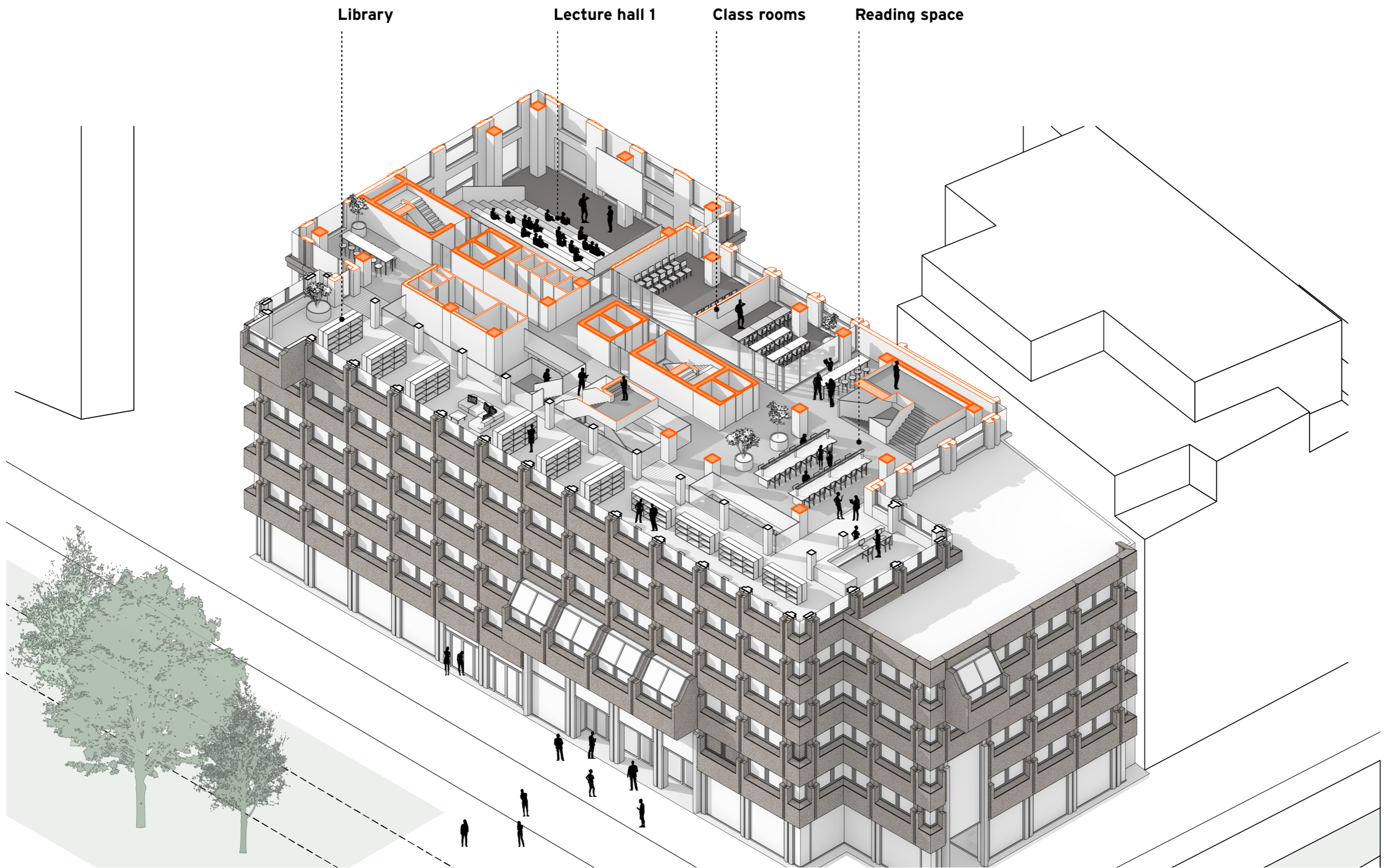
Toilets + garderobe

Debate room 1

Foyer

Debate room 2

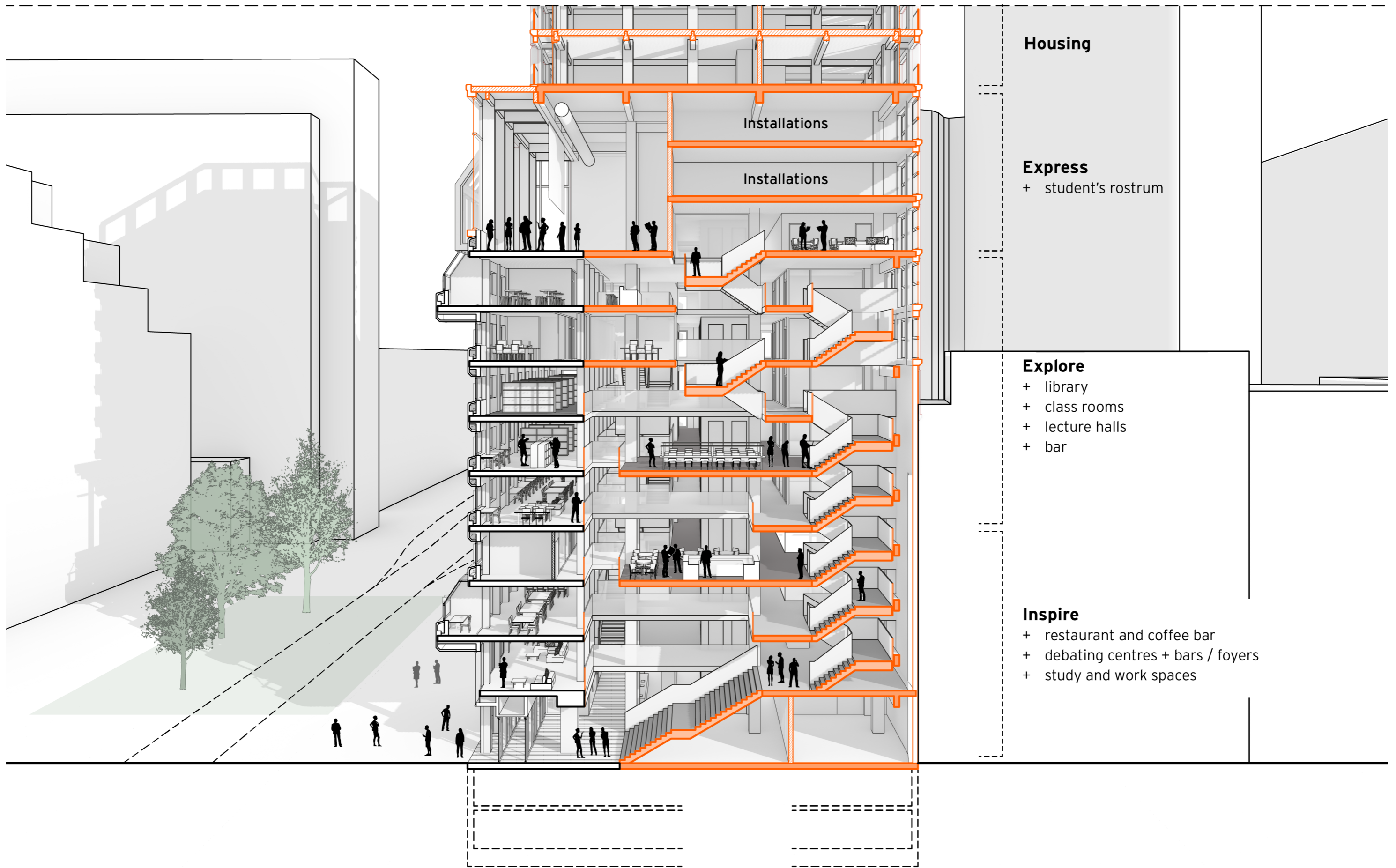
Joint between political worlds - debate rooms (first floor)



Joint between political worlds - lecture halls and library (fifth floor)



Joint between political worlds - impression of the entrance of the library



Housing

Express

+ student's rostrum

Explore

- + library
- + class rooms
- + lecture halls
- + bar

Inspire

- + restaurant and coffee bar
- + debating centres + bars / foyers
- + study and work spaces

Joint between political worlds - stairs and entrances



404 HOME FINE

3. **The expression of the program**



Underwood & Underwood/CORBIS, n.d.

Benito Mussolini & Palazzo Venezia



Farocki, 1992 (1989)

Nicole Ceausescu & Communist Party's central committee office



Moneymaker/Getty, 2026

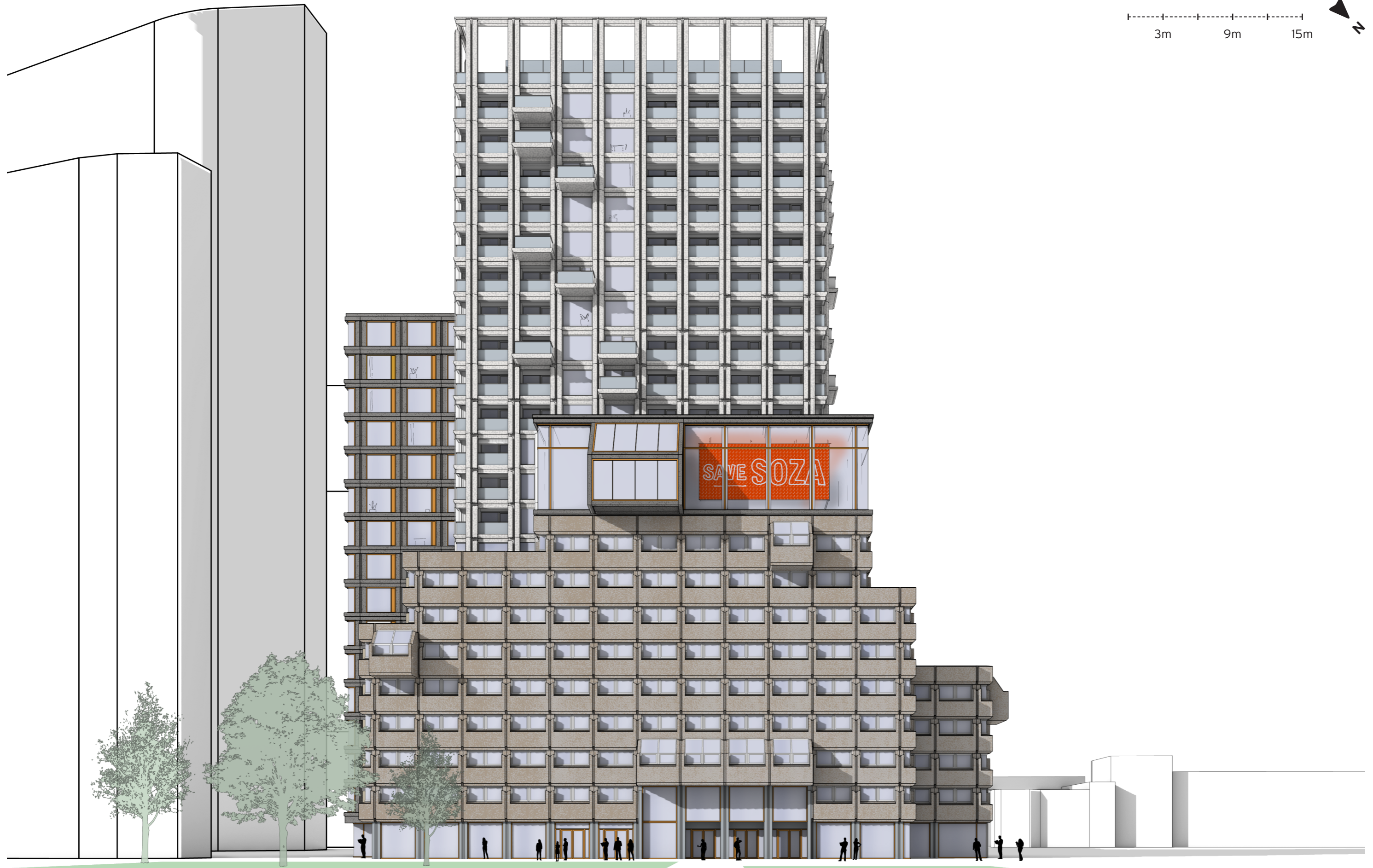
Donald Trump & South Portico balcony



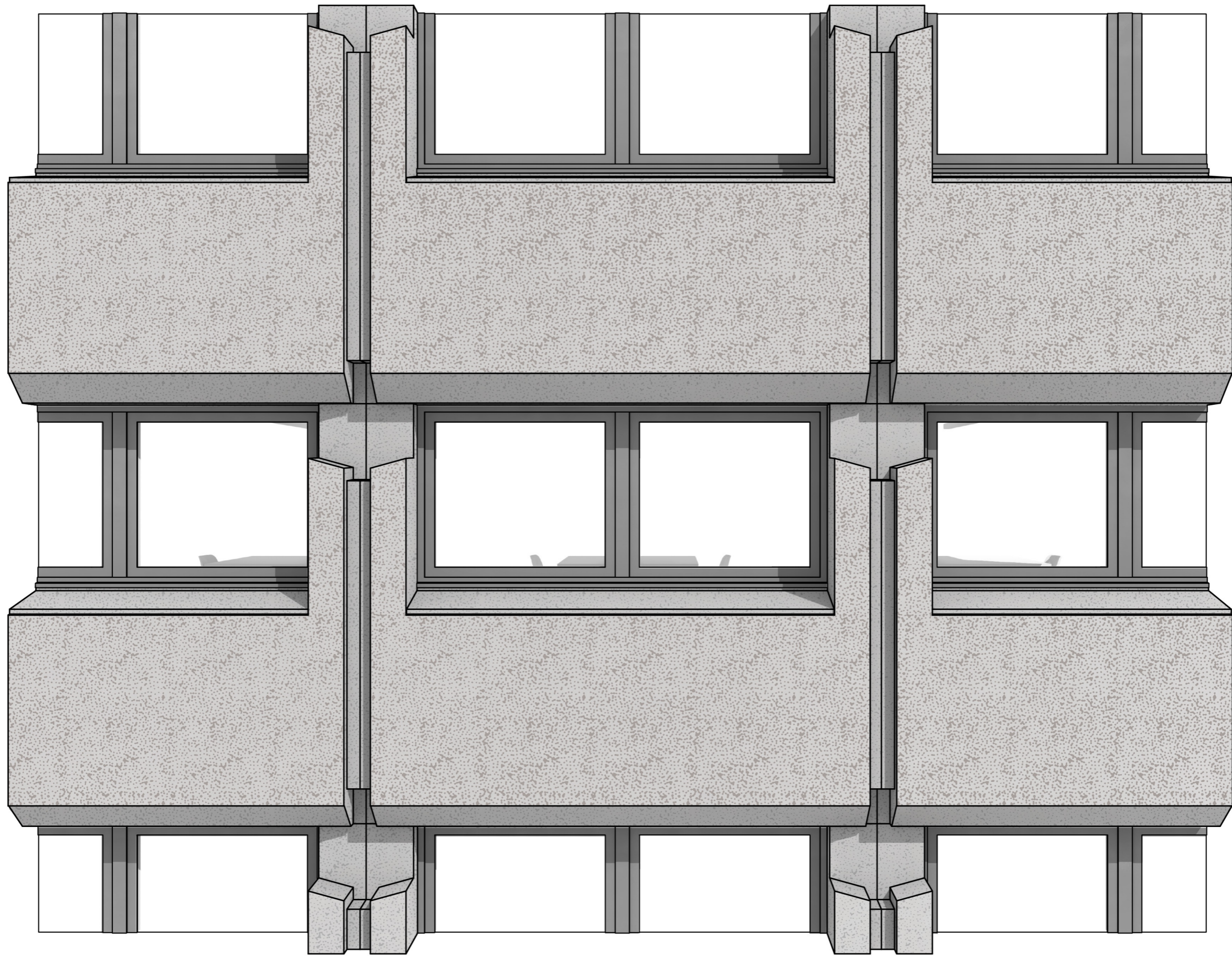
Travelaroundwithme, n.d.

Dutch Royal family & Paleis Noordeinde balcony

The expression of the program - the political balcony



The expression of the program - front facade



The expression of the program - facade fragment



The expression of the program - facade fragment of existing situation

Belle(re)vue



Conclusion

Steven van Haften

studio 'Resourceful Reuse of Heritage'
A4 presentation
2026.06.17

Chris de Vries
Barbara Lubelli
Lidwine Spoormans