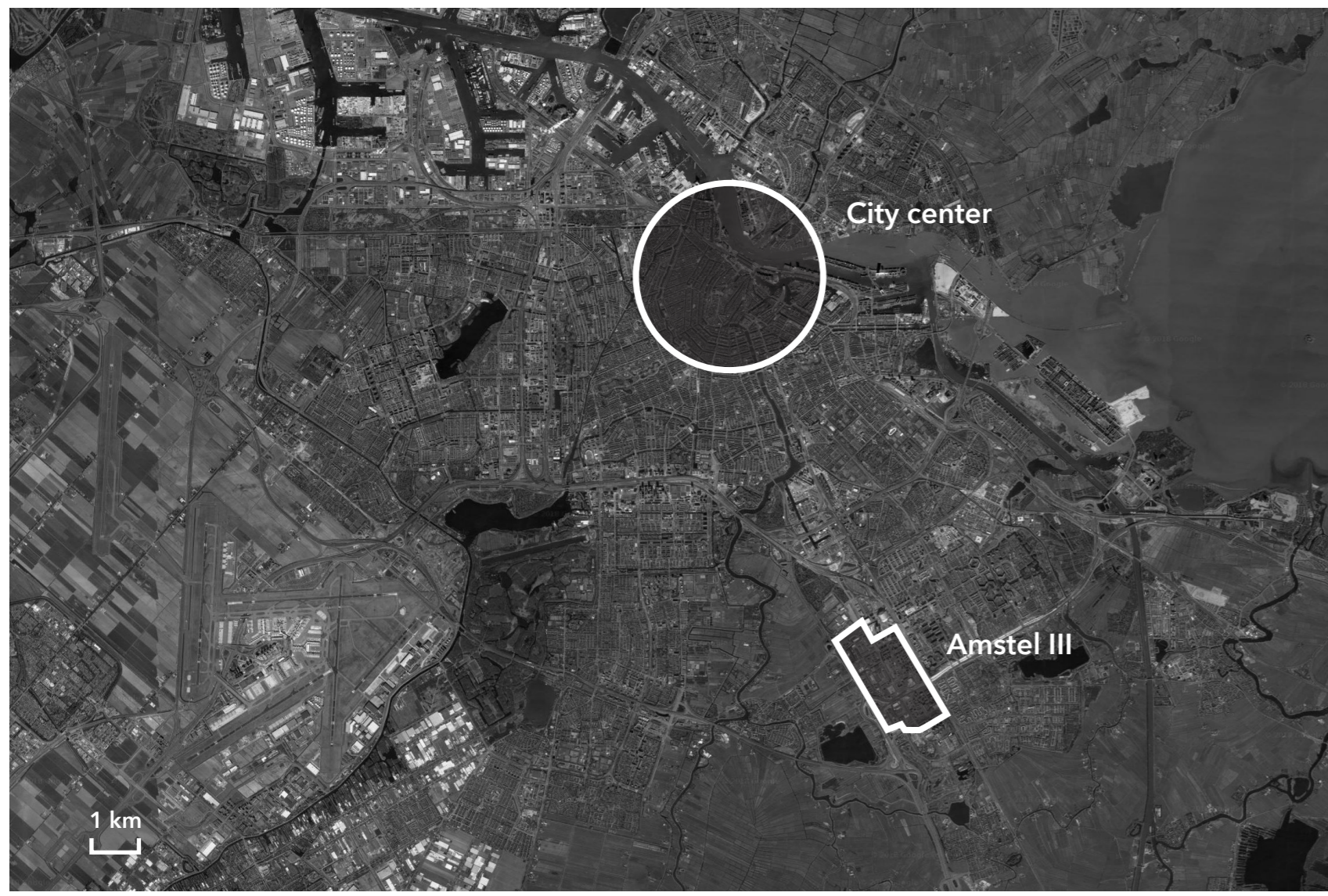


Assembling a circular life

flexible and circular conversion of a vacant office building in Amstel III

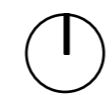
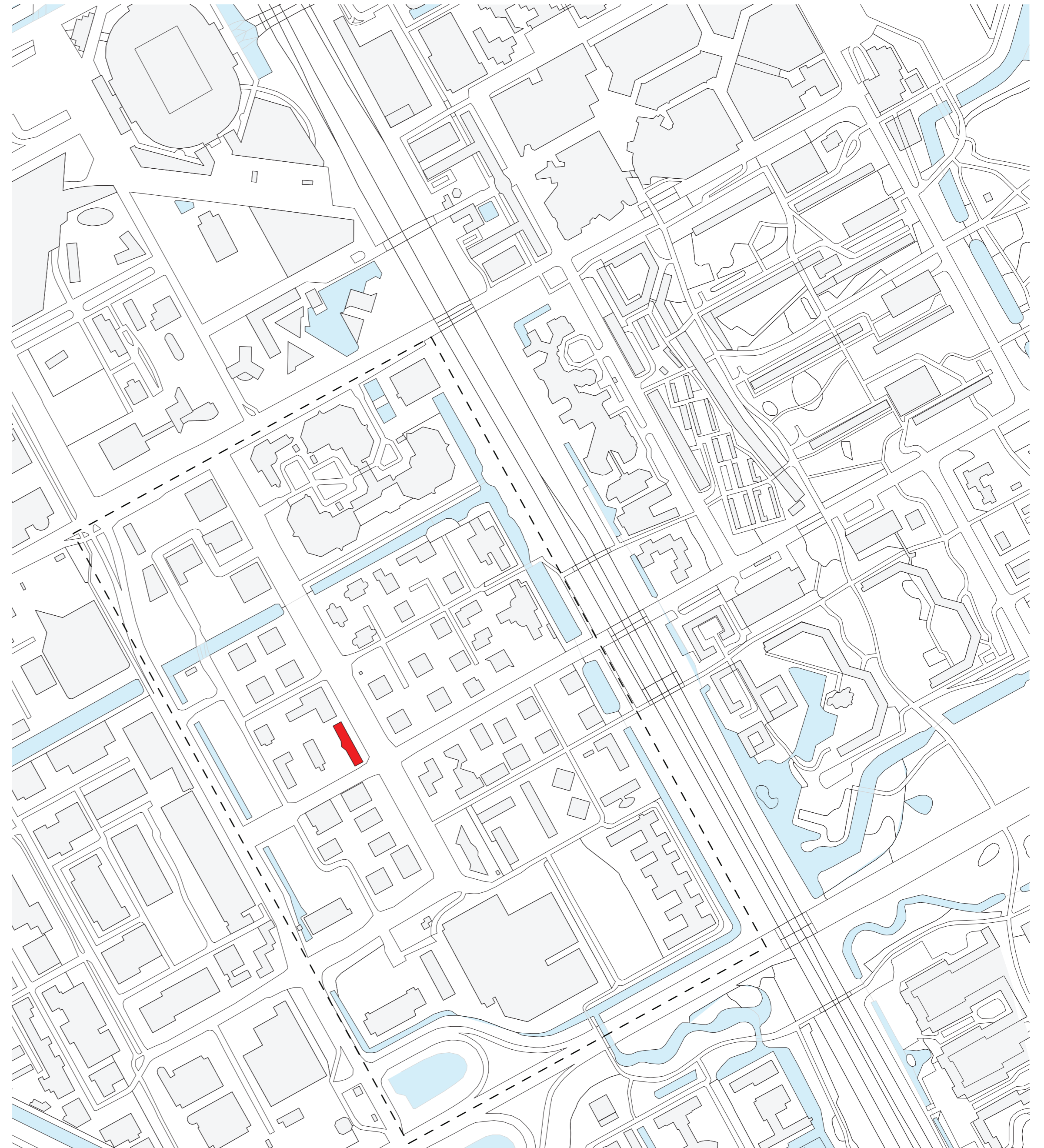
p5 Qi GAO 4739183



Amstel III in Amsterdam

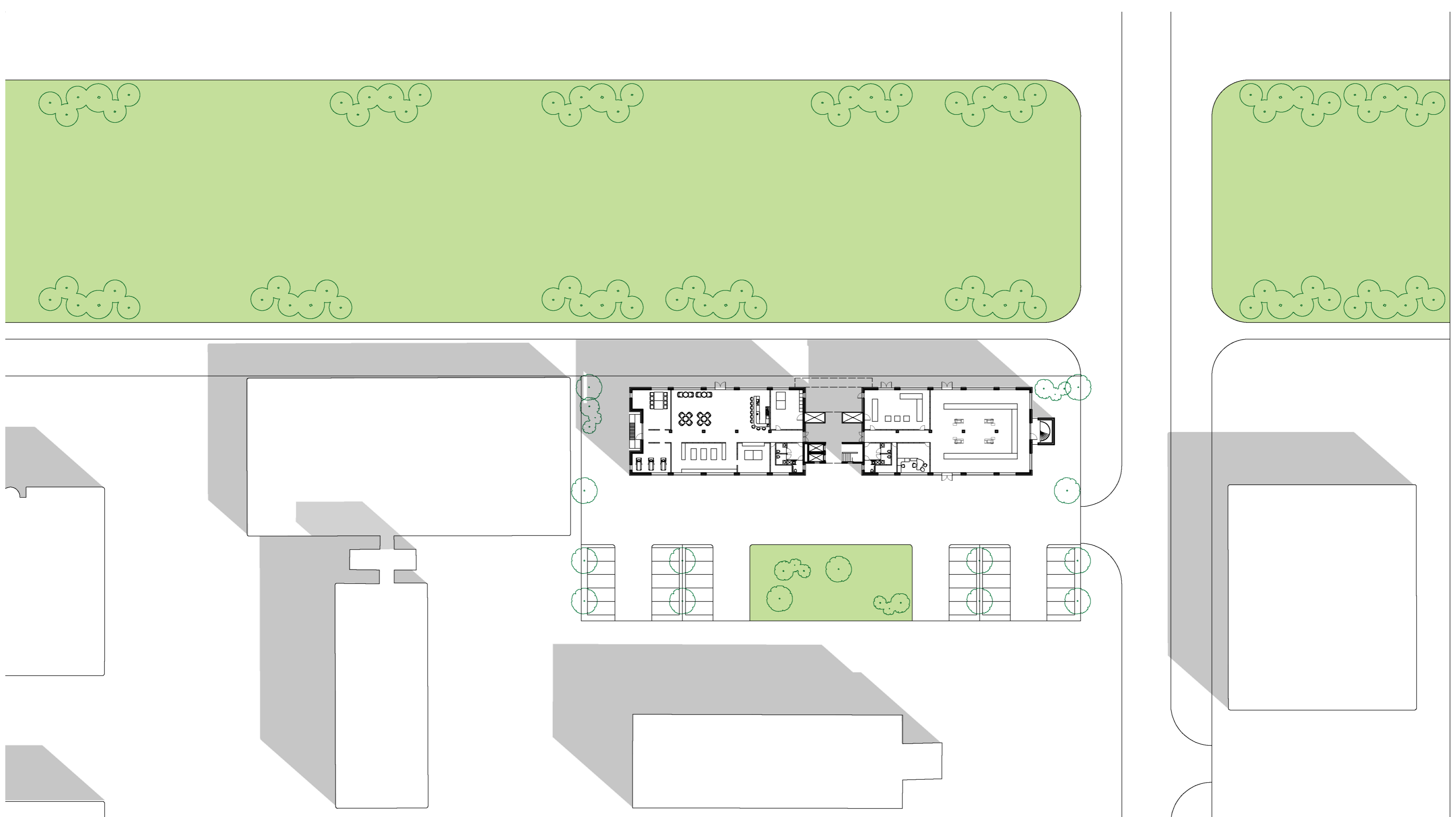


Amstel III

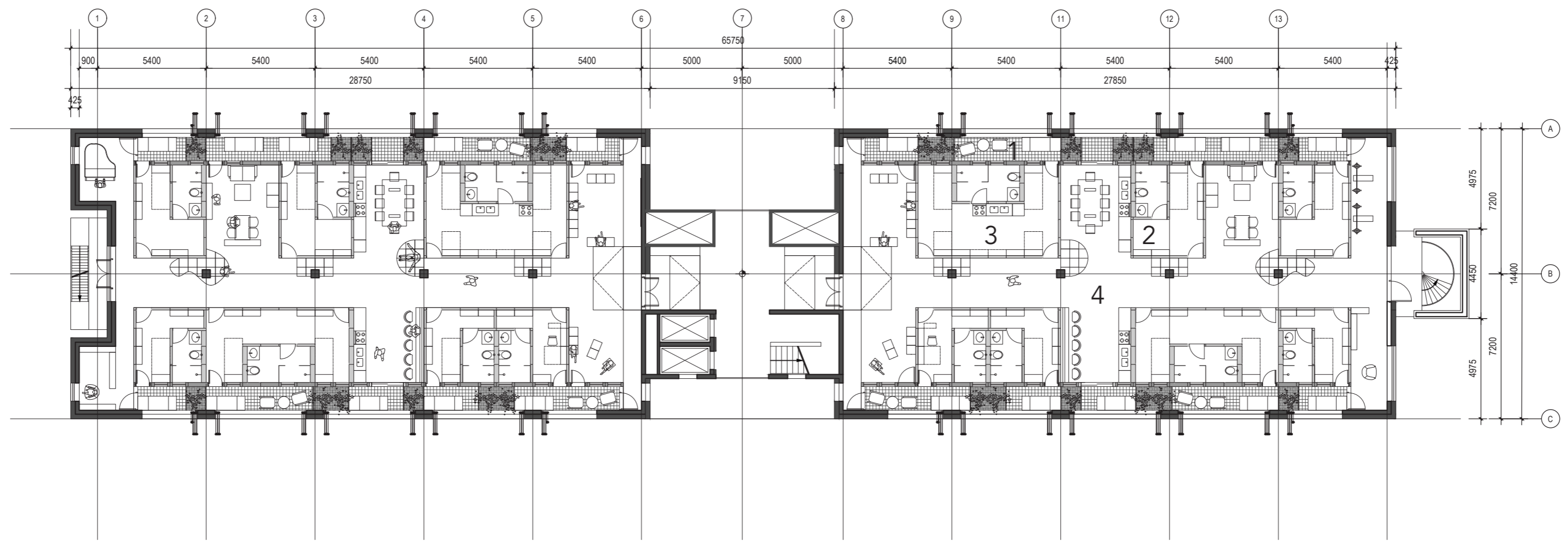


— project location
--- main research area

Situation masterplan 1:5000

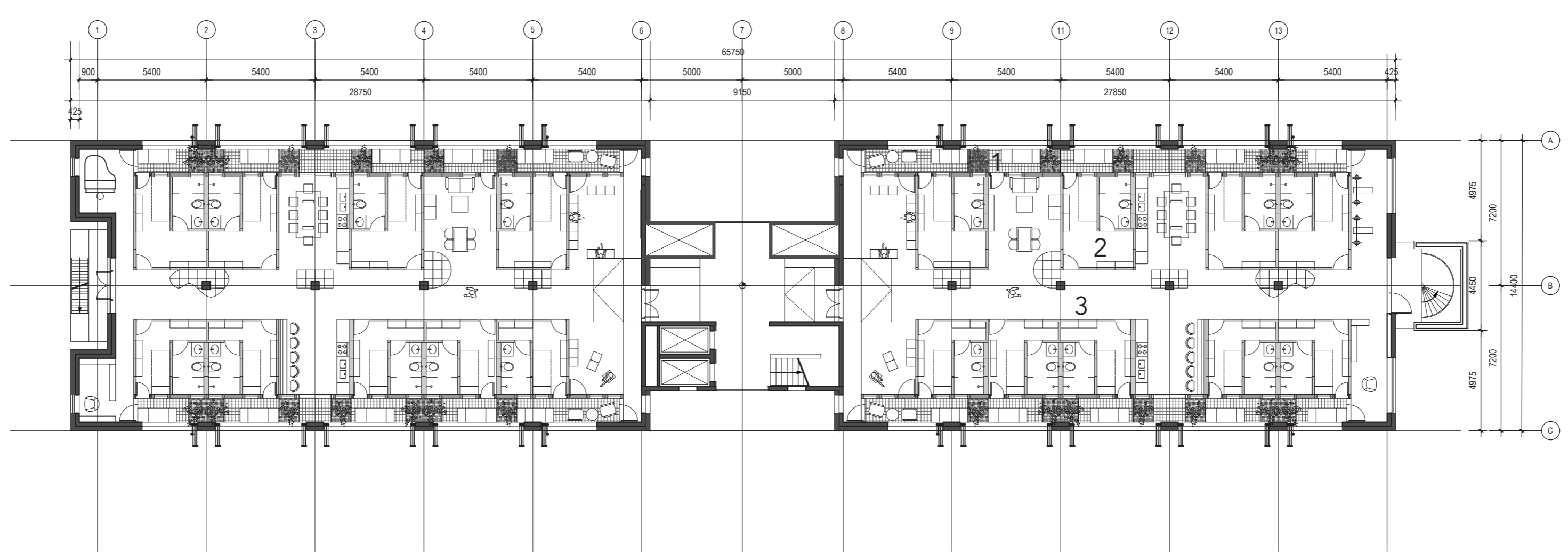


Ground floor plan with site 1:500



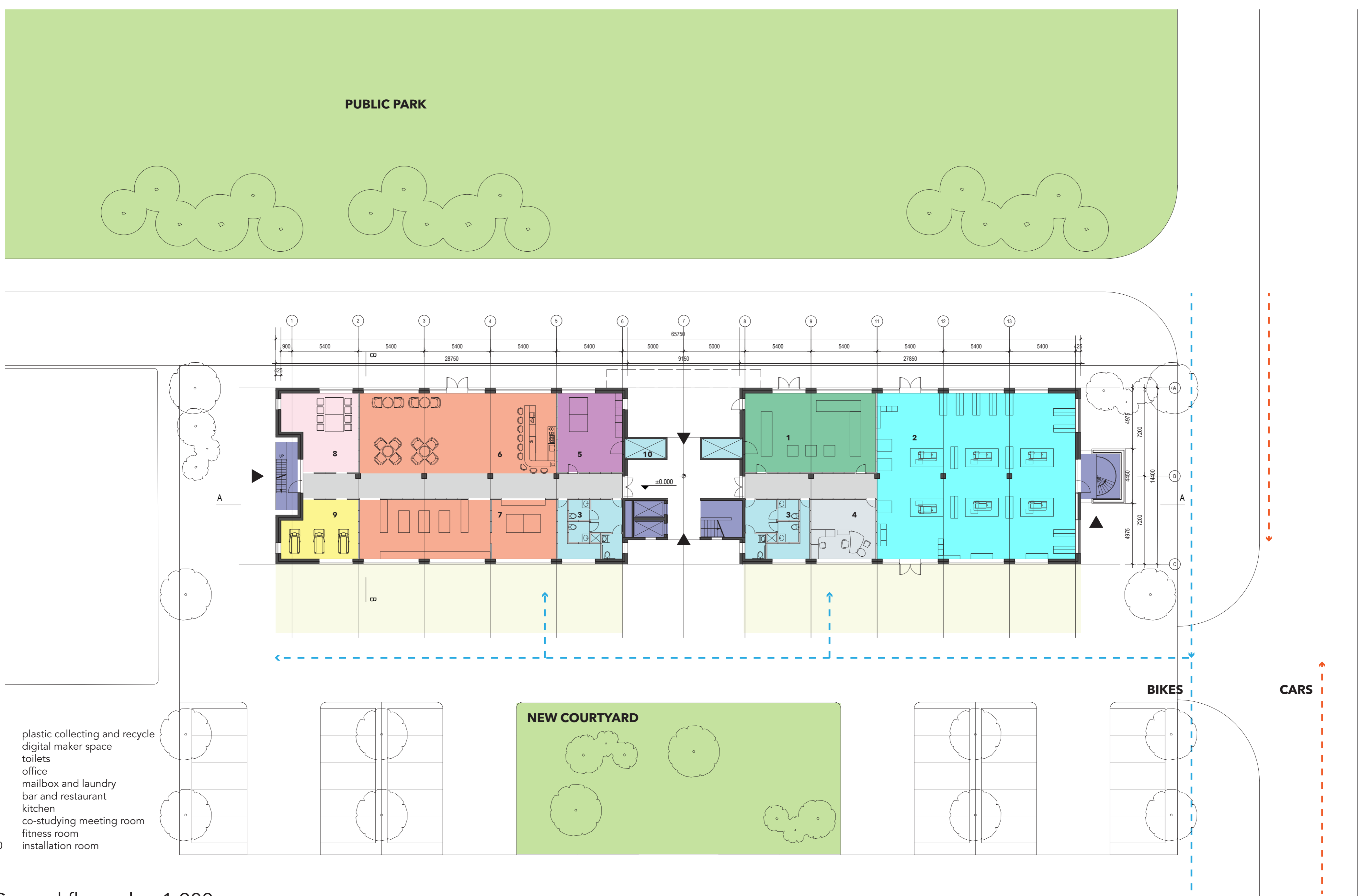
- 1 balcony
- 2 single student room
- 3 double student room
- 4 flowing common space

2nd floor plan 1:200 mixed room floor



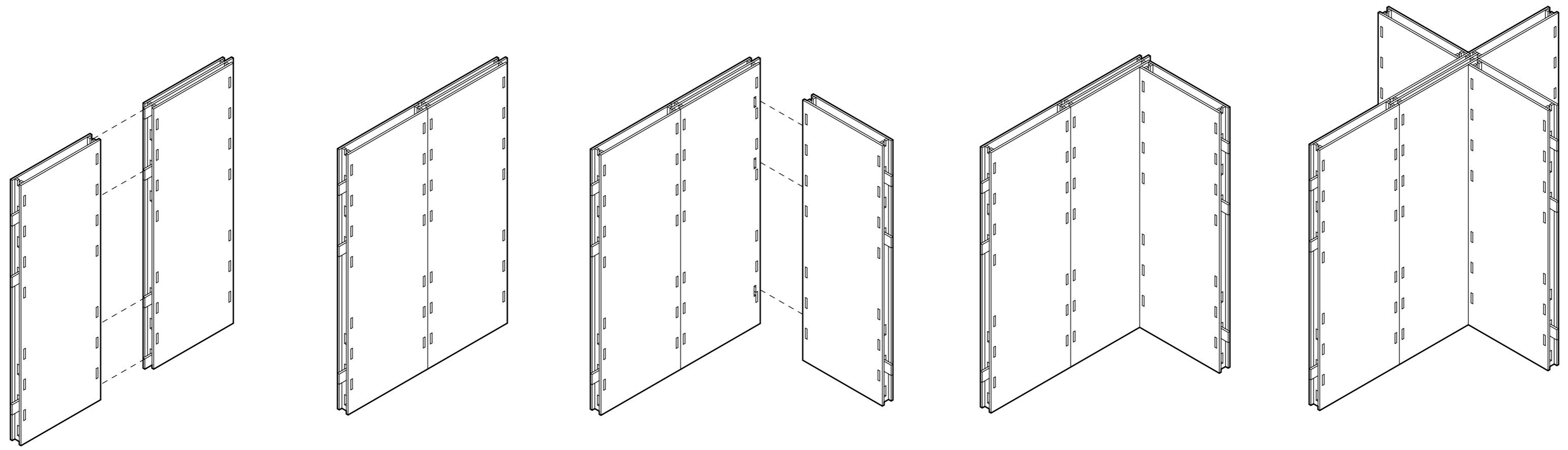
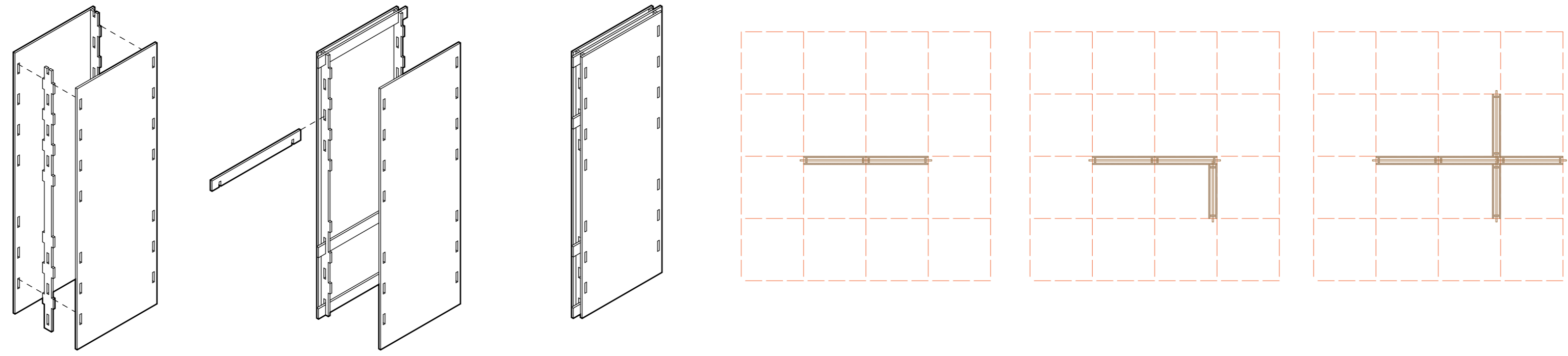
- 1 balcony
- 2 single student room
- 3 flowing common space

1st floor plan 1:200 single room floor



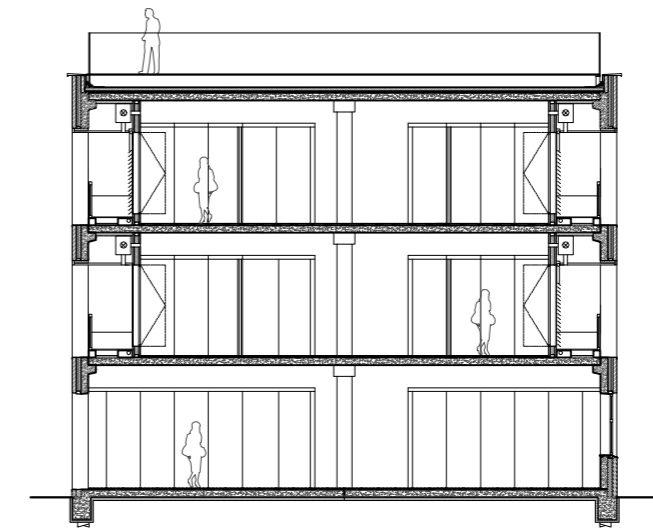
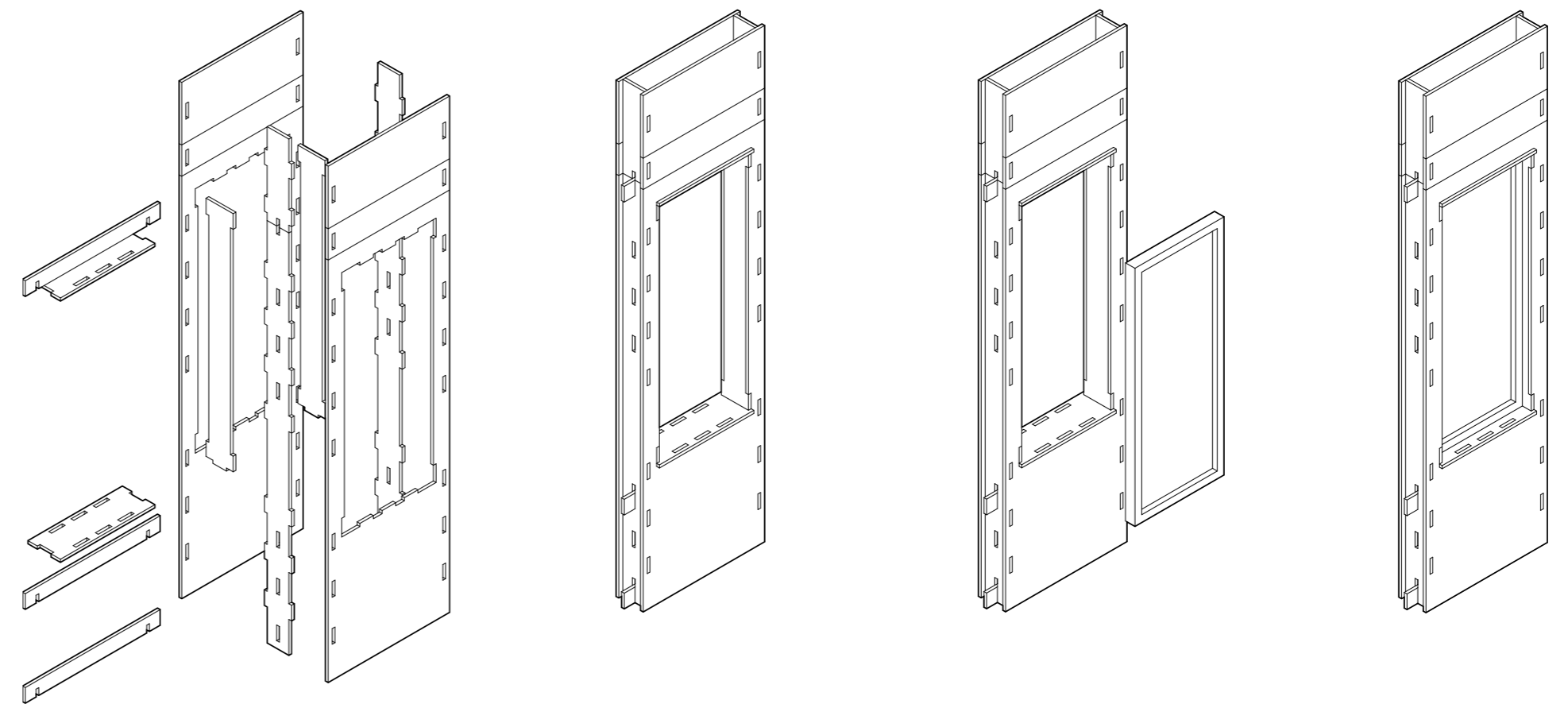
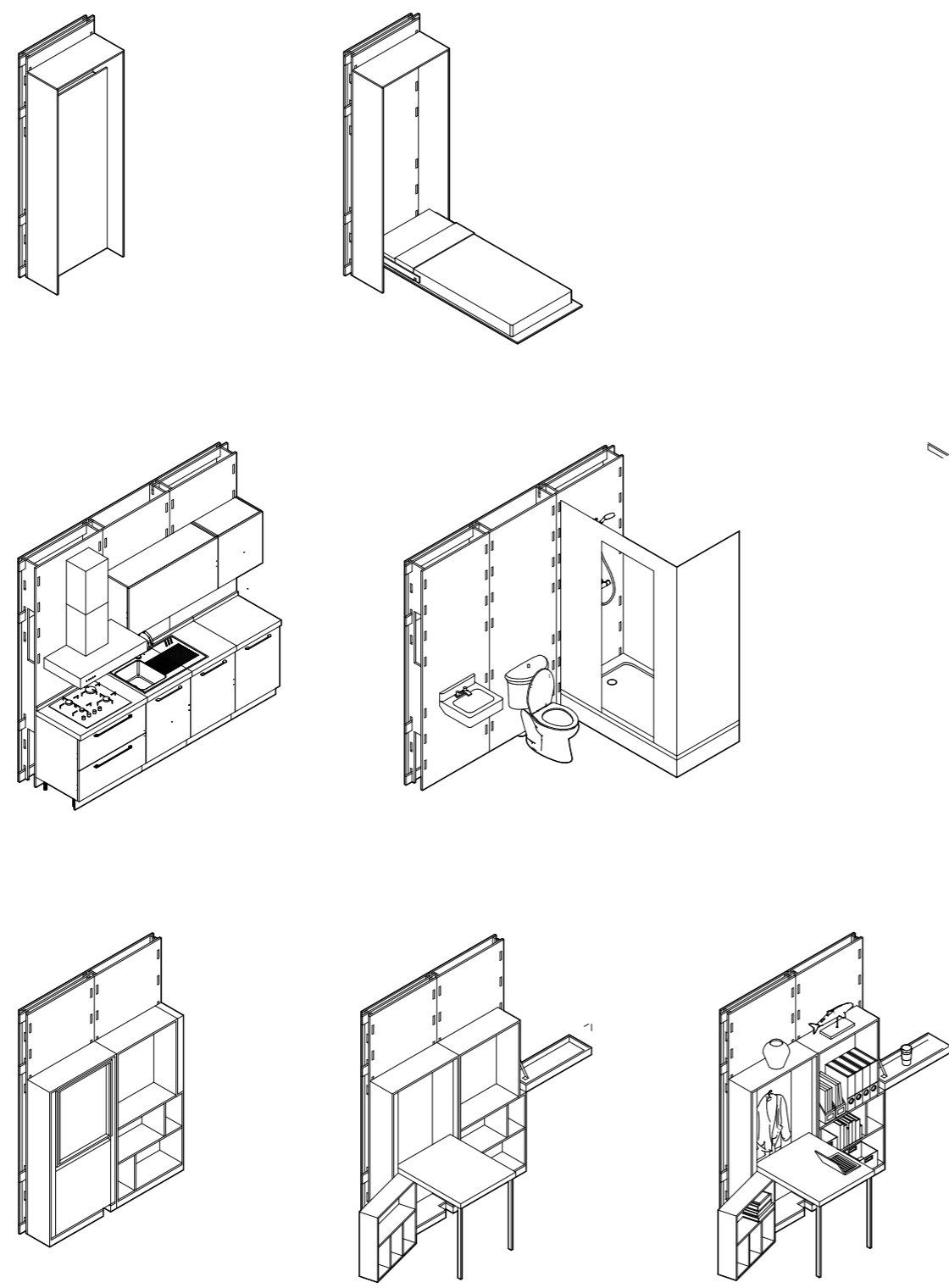
- 1 plastic collecting and recycle
- 2 digital maker space
- 3 toilets
- 4 office
- 5 mailbox and laundry
- 6 bar and restaurant
- 7 kitchen
- 8 co-studying meeting room
- 9 fitness room
- 10 installation room

Ground floor plan 1:200

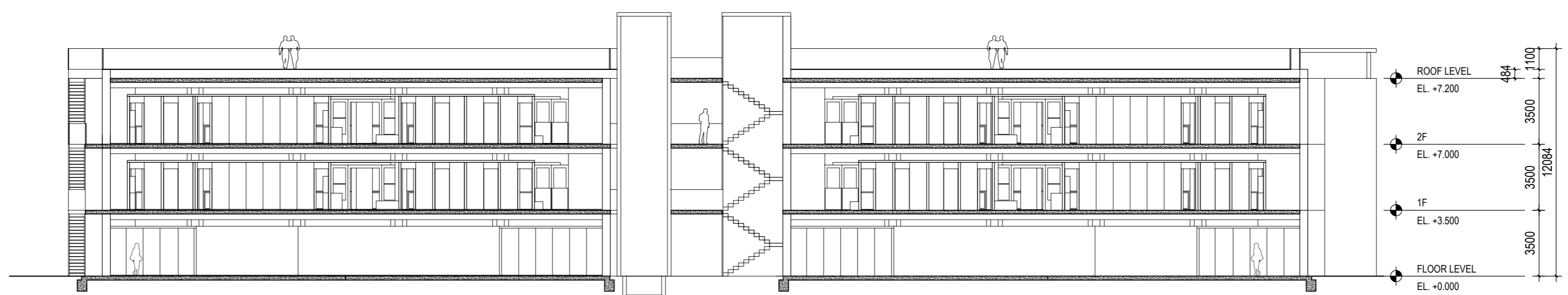


interior wall module
wall with windows

furniture and utilities



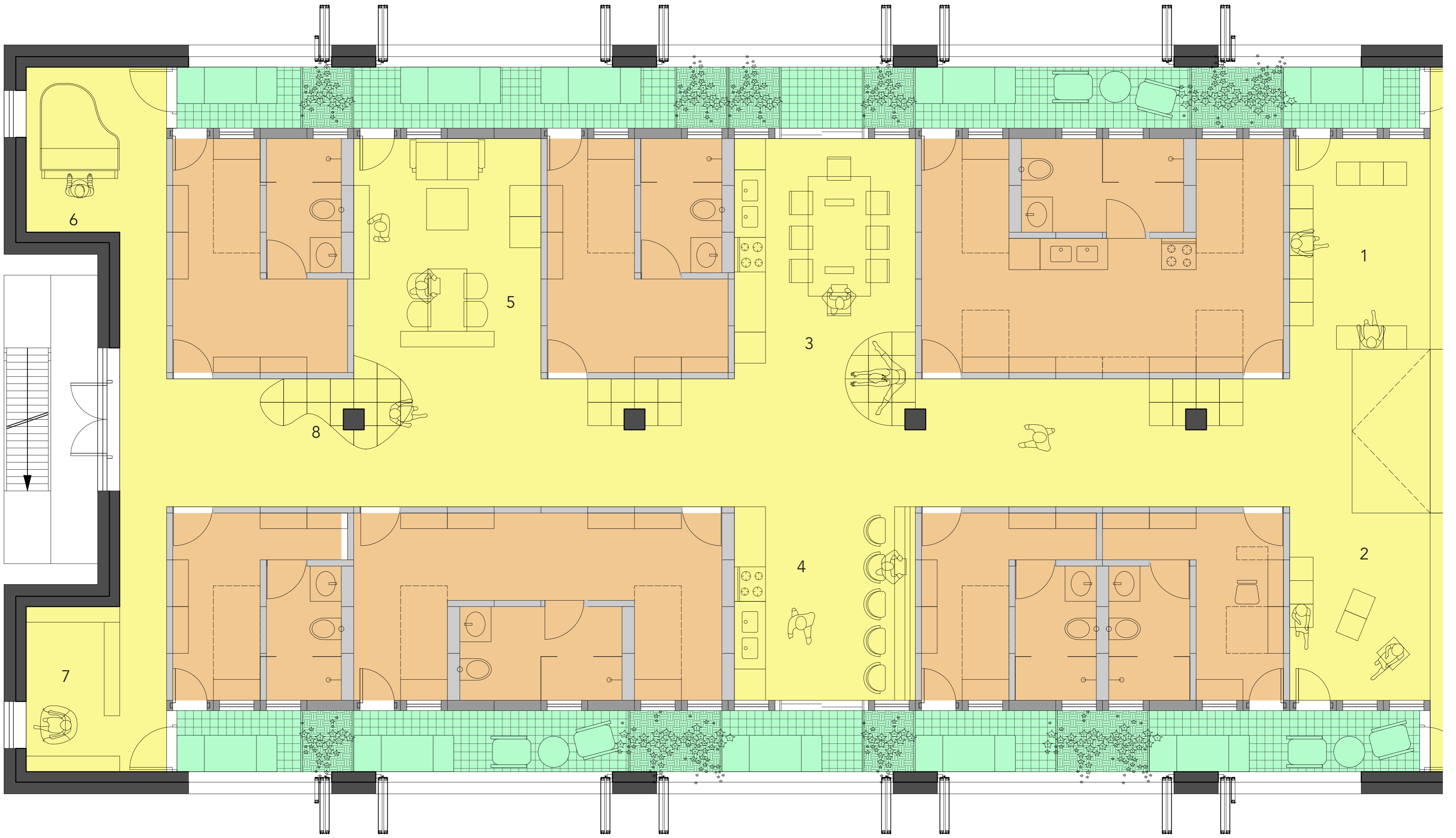
Section B-B 1:200



Section A-A 1:200

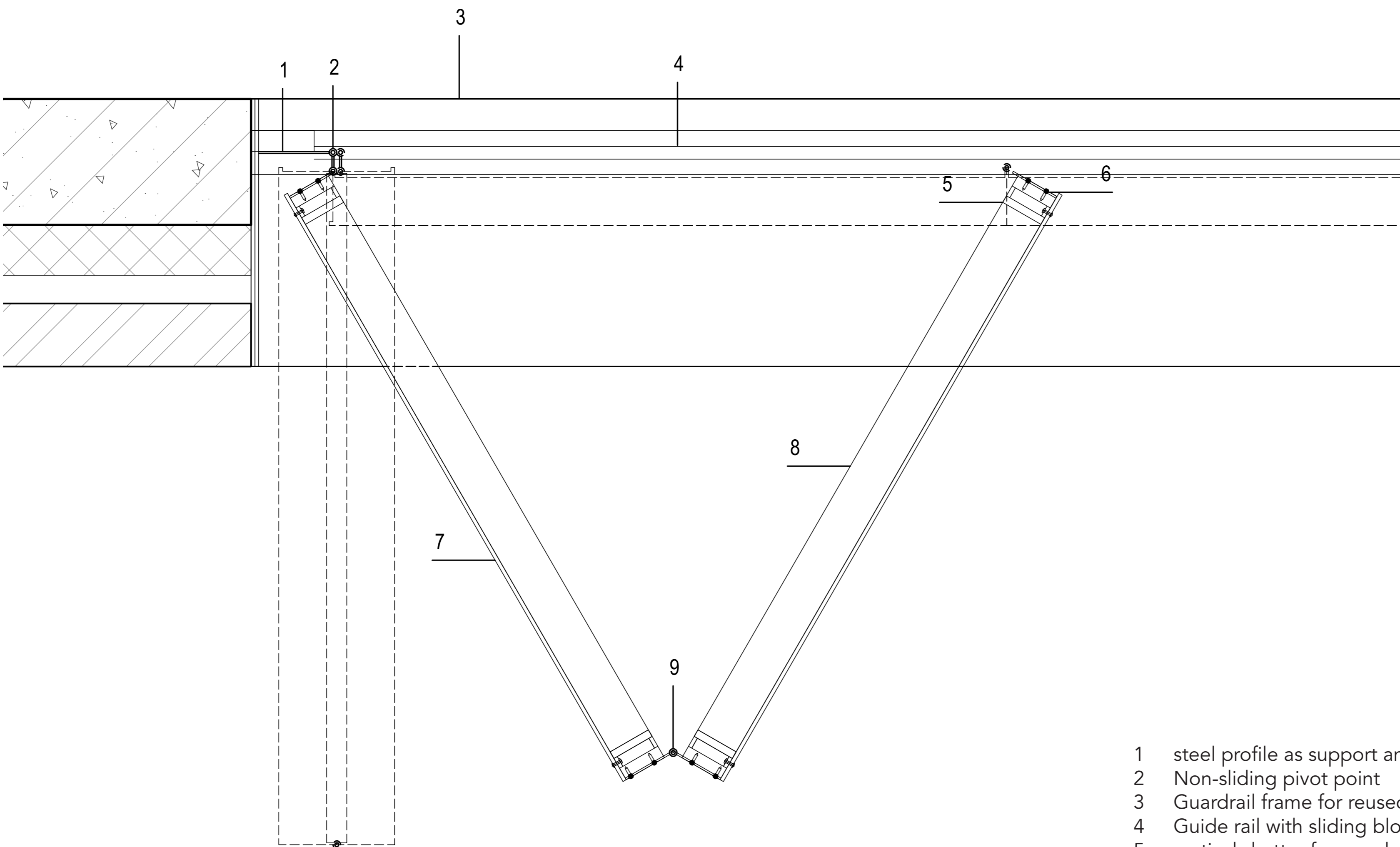


Elevation 1:200



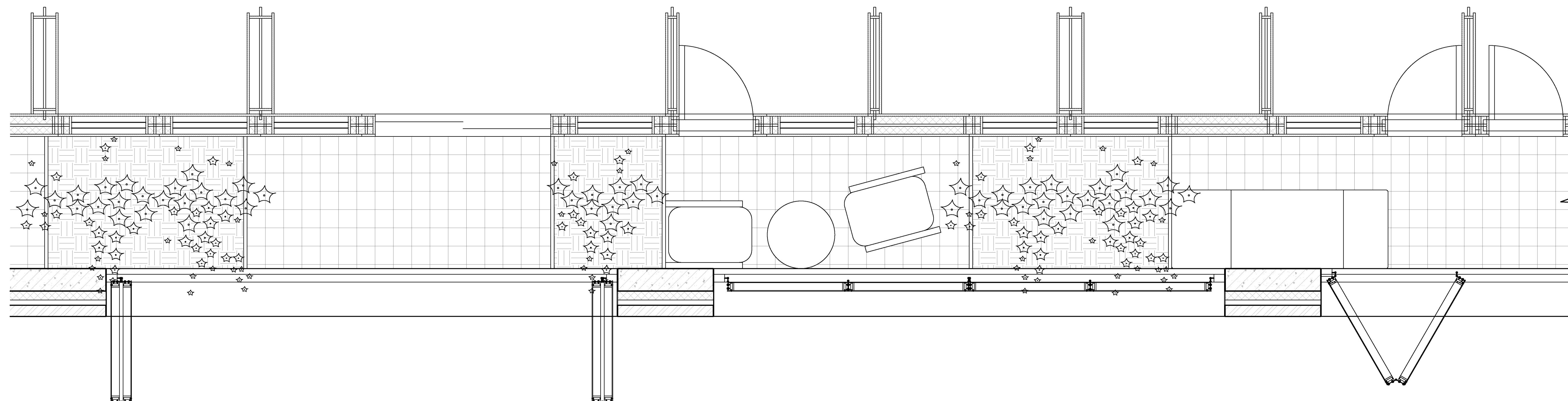
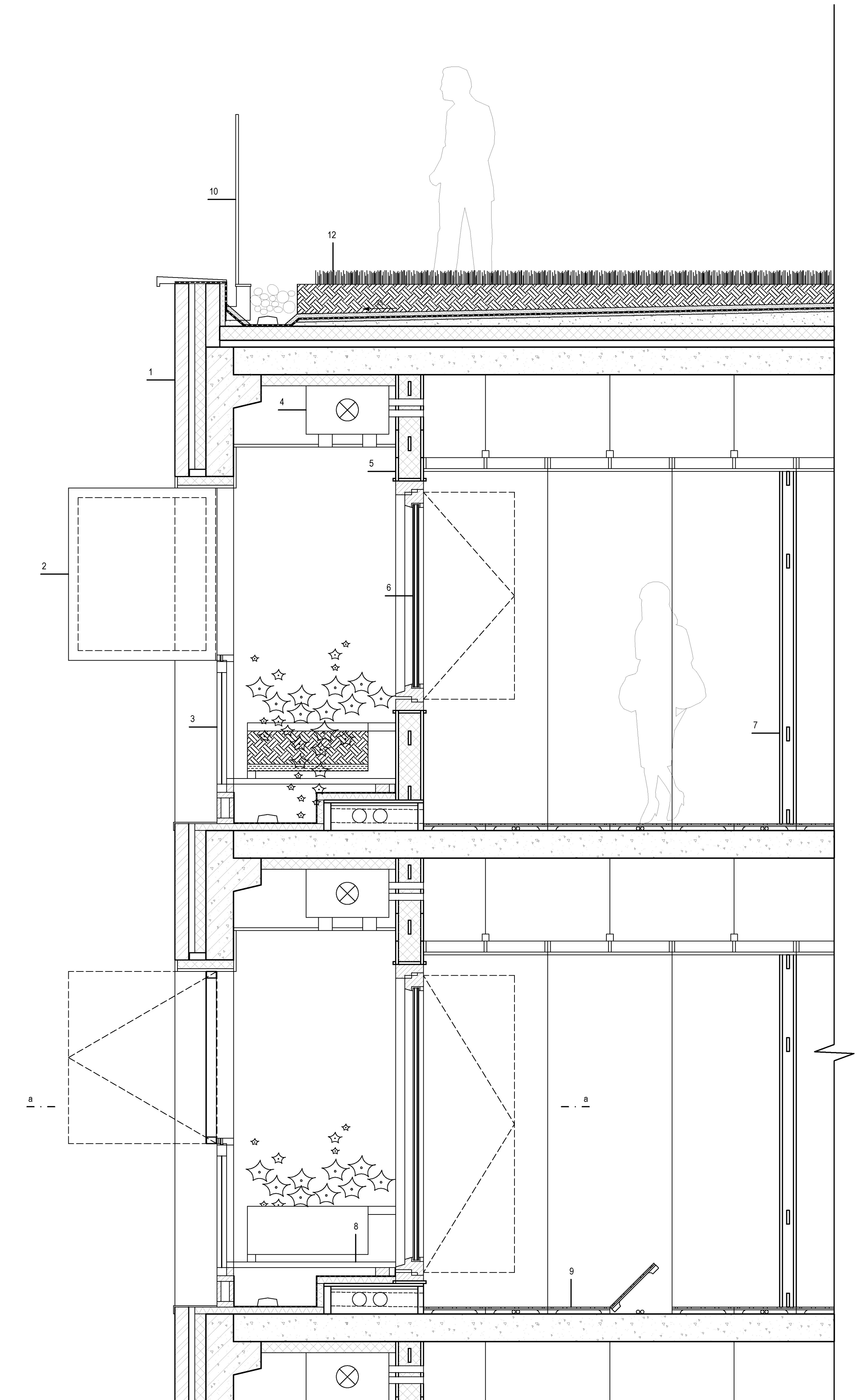
Part of floor plan 1:50

- 1 presentation space
- 2 viewing room
- 3 dining room
- 4 kitchen and bar
- 5 lounge space
- 6 art space
- 7 meditation space
- 8 flowing corridor with modular sofa



- 1 steel profile as support and end stop for folding shutters
- 2 Non-sliding pivot point
- 3 Guardrail frame for reused windows, plywood
- 4 Guide rail with sliding block, stainless steel
- 5 vertical shutter frame, plywood
- 6 steel profile to connect the shutters and pivots with bearing pins
- 7 6 mm corrugated recycled polycarbonate panel
- 8 horizontal shutter frame, plywood
- 9 vertical pivot point, stainless steel

Folding shutter detail, 1:5



- 1 original facade
100 mm brickwork
80 mm insulation
200 mm prefab concrete
- 2 manual folding window, 70mm, 6mm transparent polycarbonate panels
- 3 reused windows as guardrail, fixed with wood frame and steel profiles
- 4 heat recovery unit
- 5 prefabricated exterior wall module, 2 × 18 mm plywood panels, treated for exterior condition
160 mm wood wool insulation
- 6 2 × 10 mm openable double glazed window, made from recycled glass
window unit fixed in the wall module with screws
- 7 prefabricated interior wall module, 2 × 18 mm OSB panels
80 mm void space for acoustic insulation
- 8 hanging plant pot
self-supported outdoor floor panel, 40mm
6 mm vapor barrier
50 mm insulation
prefabricated raised floor for water pipes, 18 mm plywood panels,
openable from the interior for maintenance
- 9 50 mm raised floor, void height 30 mm, recycled polypropylene
200 mm existing prefabricated reinforced concrete slab
- 10 roof guardrail, recycled glass
roof green with low-maintenance grass and soil
2 × vapor barrier
sloping layer
100 mm insulation
200 mm existing prefabricated reinforced concrete slab

Vertical and horizontal sections(a-a), facade fragment 1:20