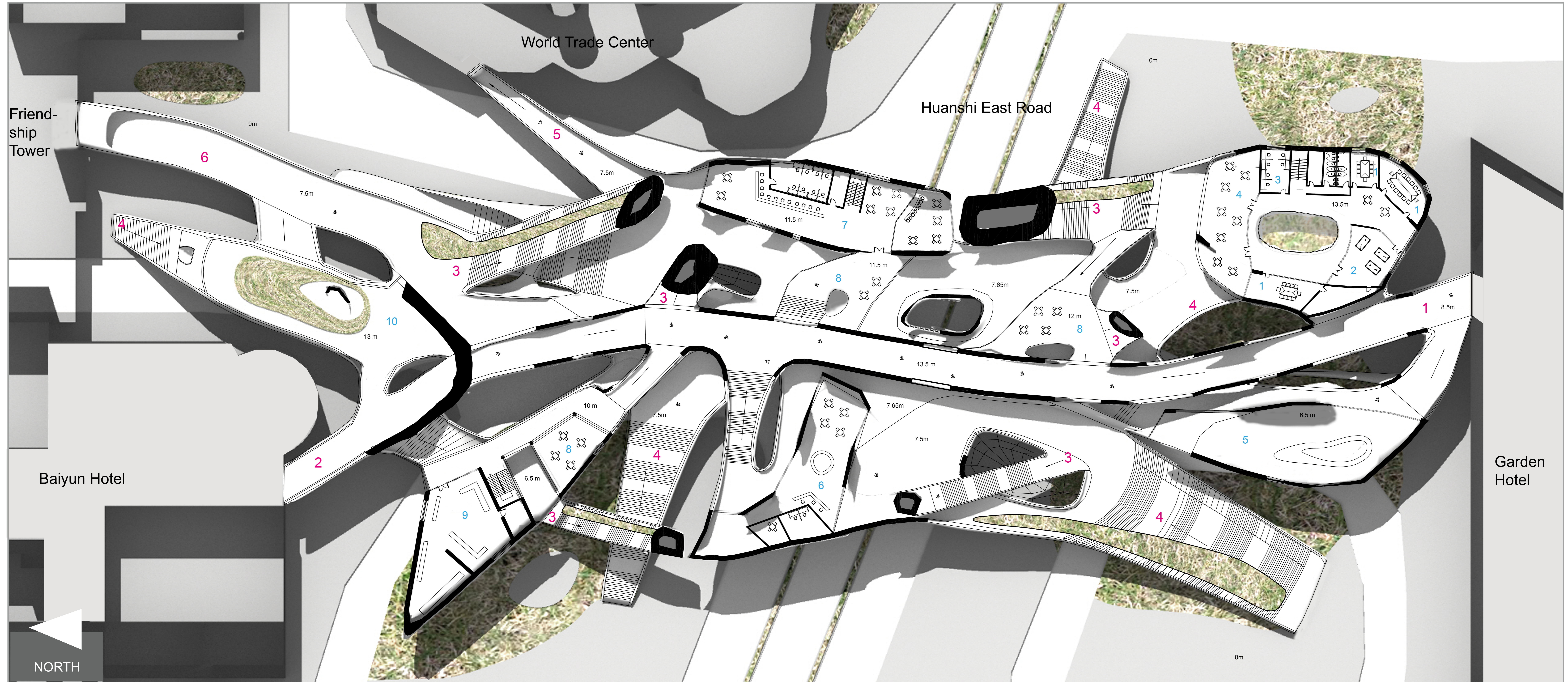
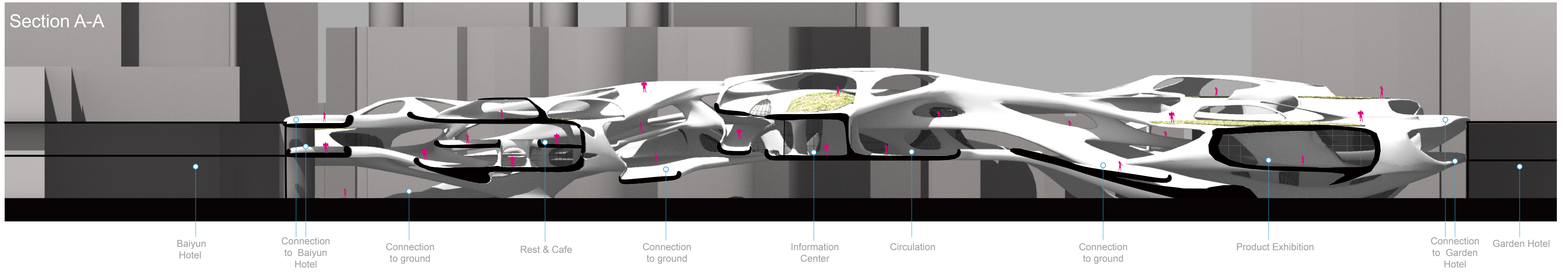


Second Floor

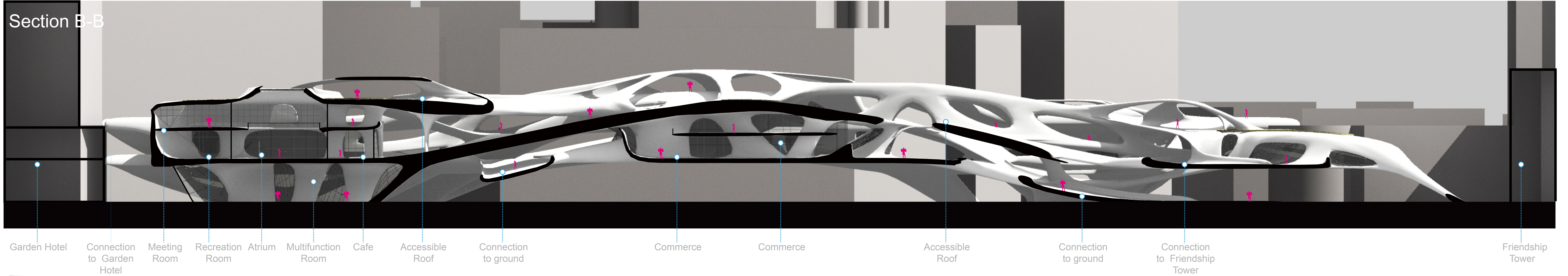


- | | | | | | | | | | |
|------------------------------|------------------------------|----------------------|------------------------|------------------------------------|----------------------------------|--------------------------|---------------|-------------------------------|-------------------|
| 1 Connection to Garden Hotel | 2 Connection to Baiyun Hotel | 3 Connection to Roof | 4 Connection to Ground | 5 Connection to World Trade Center | 6 Connection to Friendship Tower | | | | |
| 1 Meeting Room | 2 Recreation Room | 3 Office | 4 Cafe | 5 Exhibition (big products) | 6 Information Center | 7 Commerce (for company) | 8 Rest & Cafe | 9 Exhibition (small Products) | 10 Roof Landscape |
- 30m

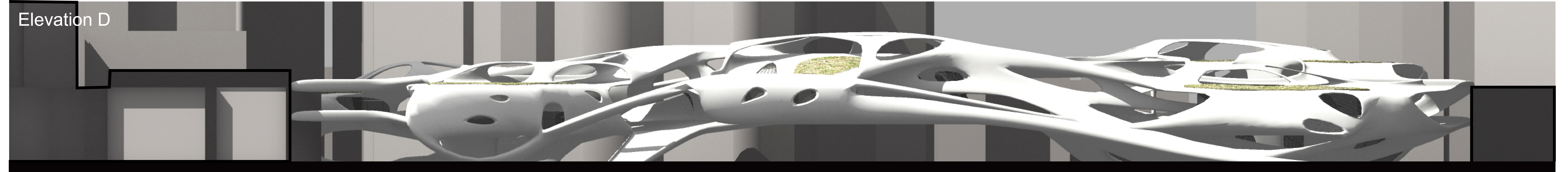
Section A-A



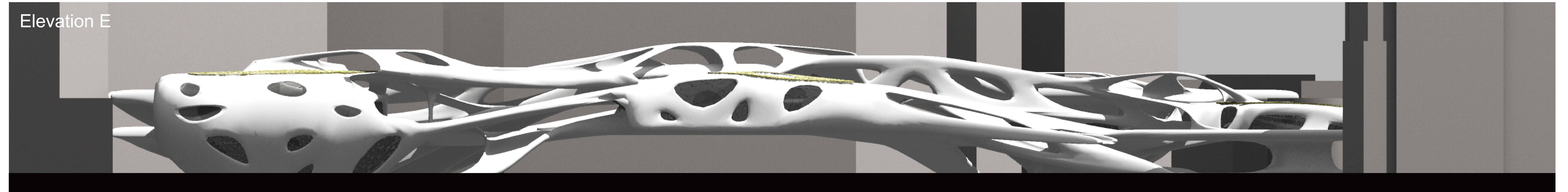
Section B-B



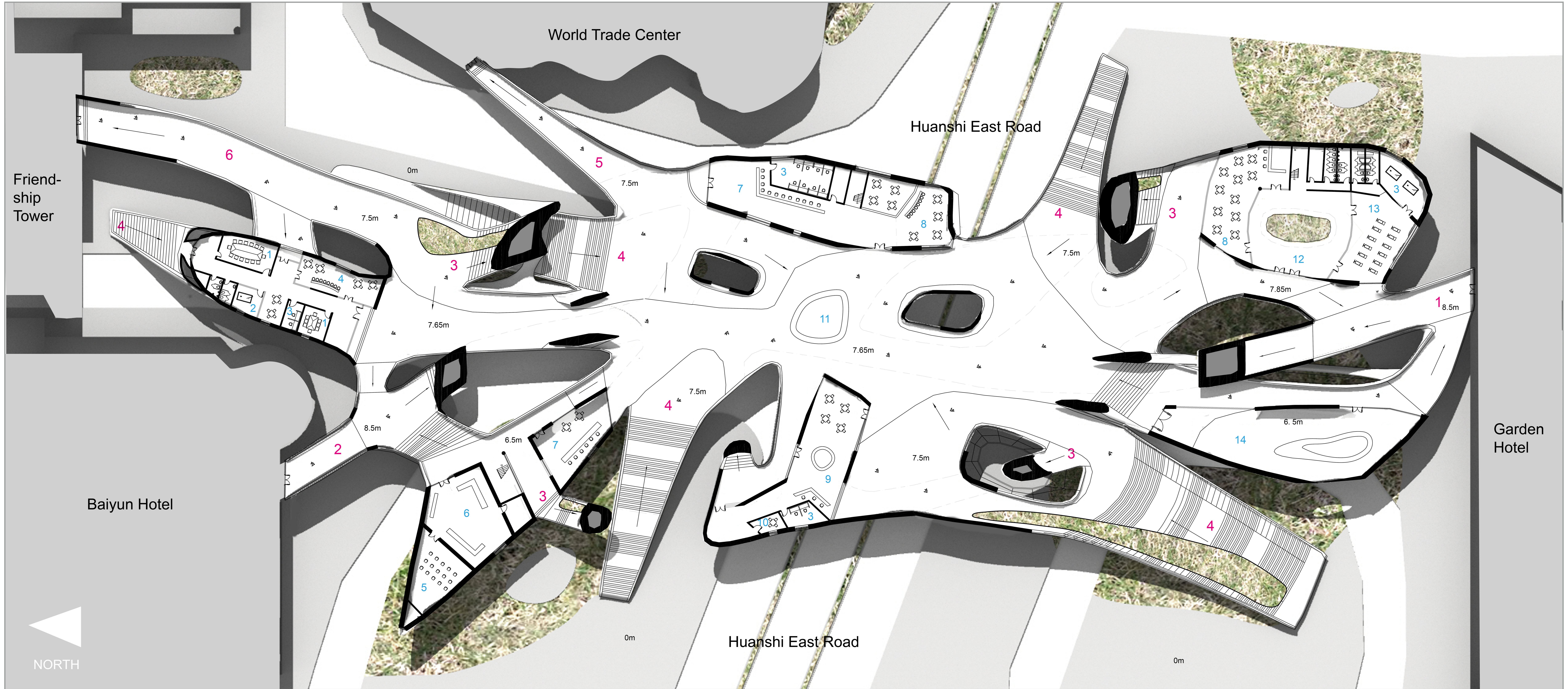
Elevation D



Elevation E



First Floor



1 Connection to Garden Hotel

2 Connection to Baiyun Hotel

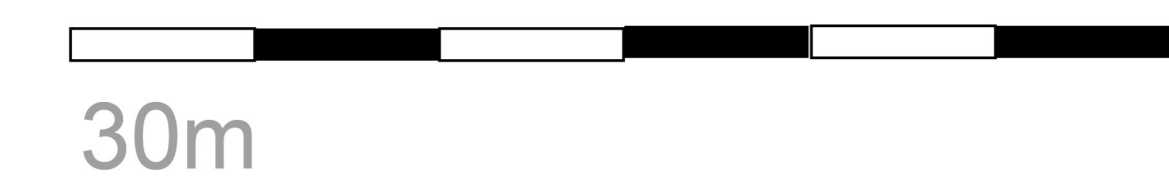
3 Connection to Roof

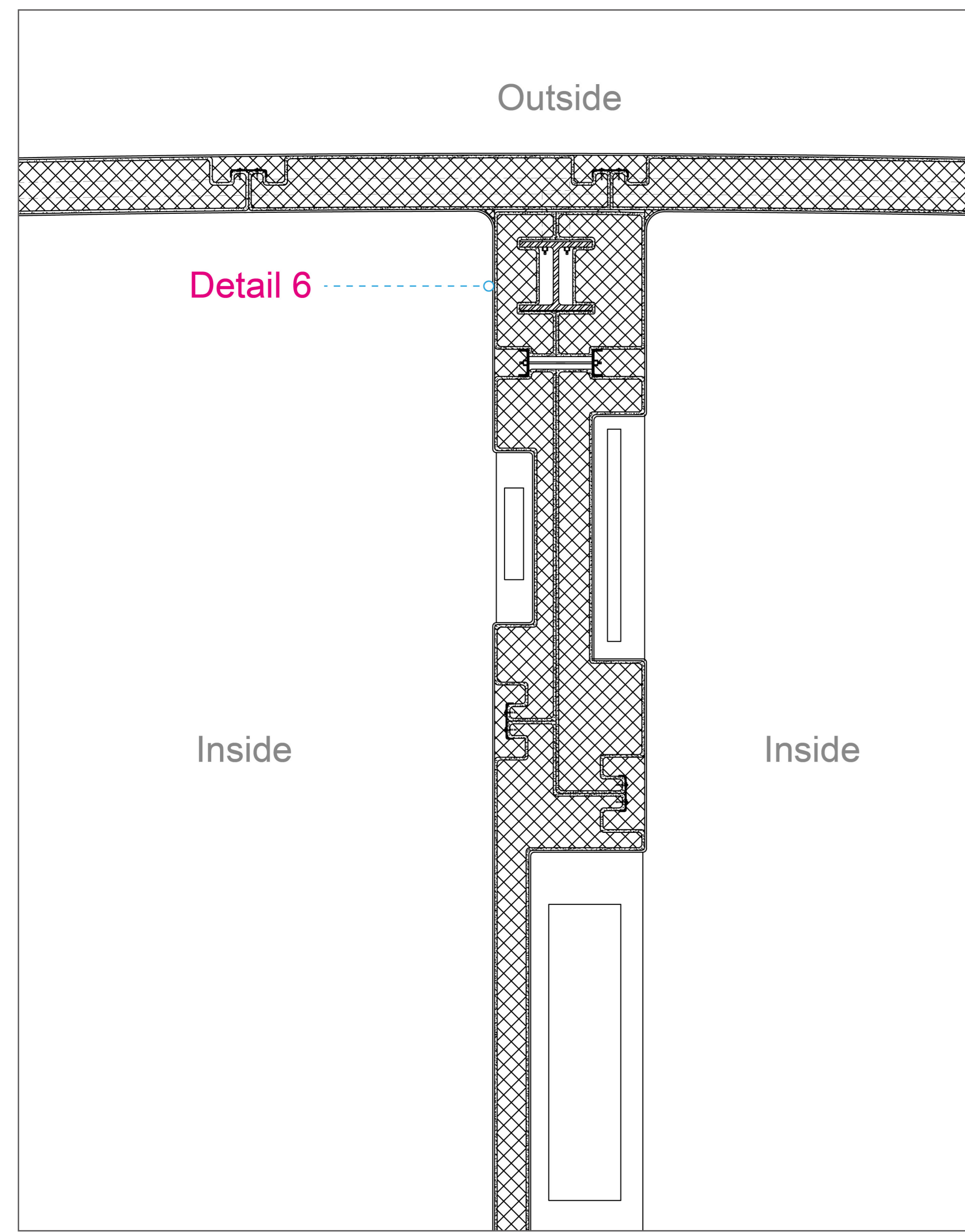
4 Connection to Ground

5 Connection to World Trade Center

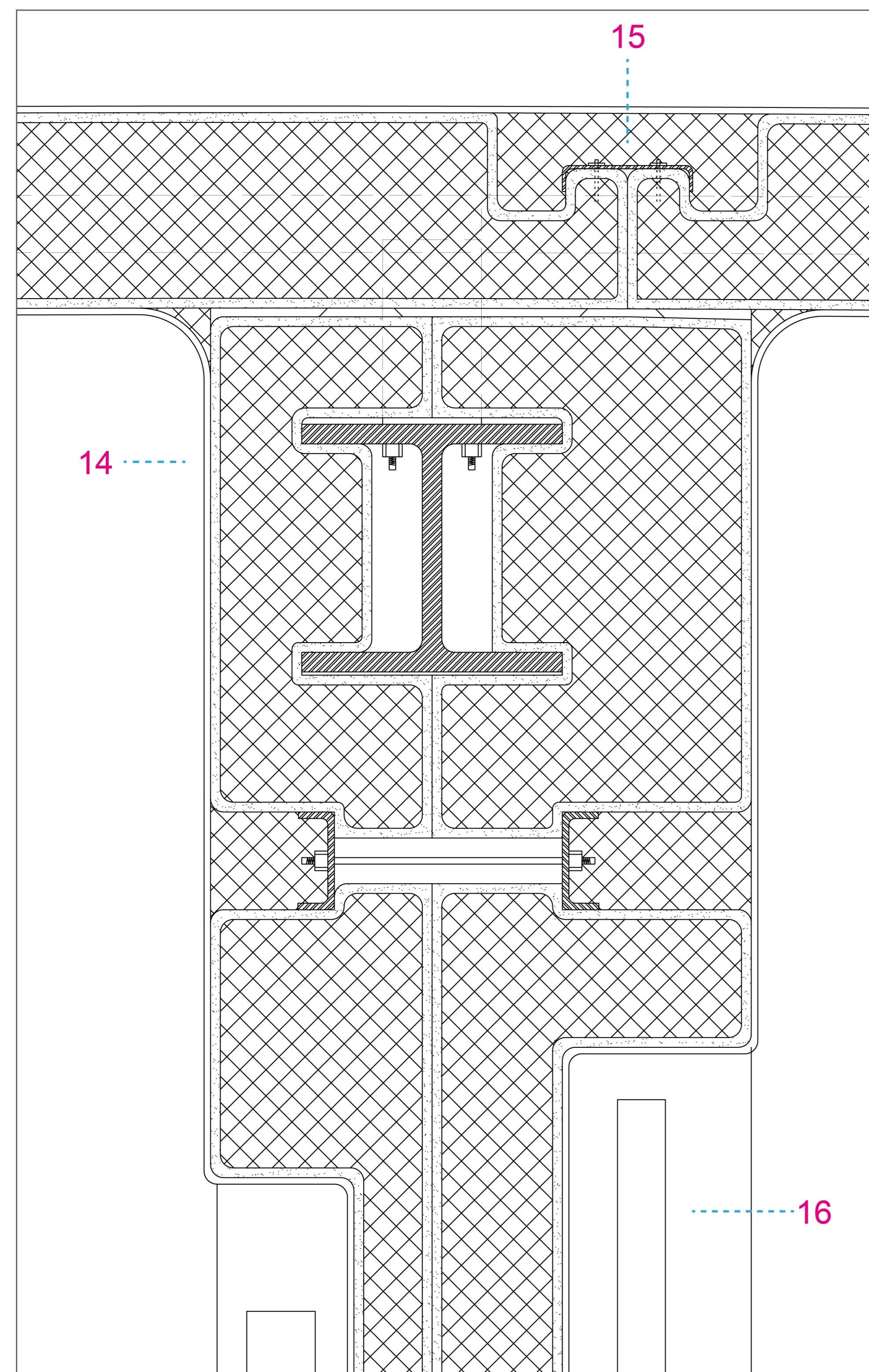
6 Connection to Friendship Tower

1 Meeting Room 2 Recreation Room 3 Office 4 Bar 5 Media Room 6 Exhibition (small products) 7 Commerce (for company) 8 Cafe 9 Information Center 10 Vip Room 11 Stage for temporary exhibition 12 Atrium 13 Gym 14 Exhibition (big products)

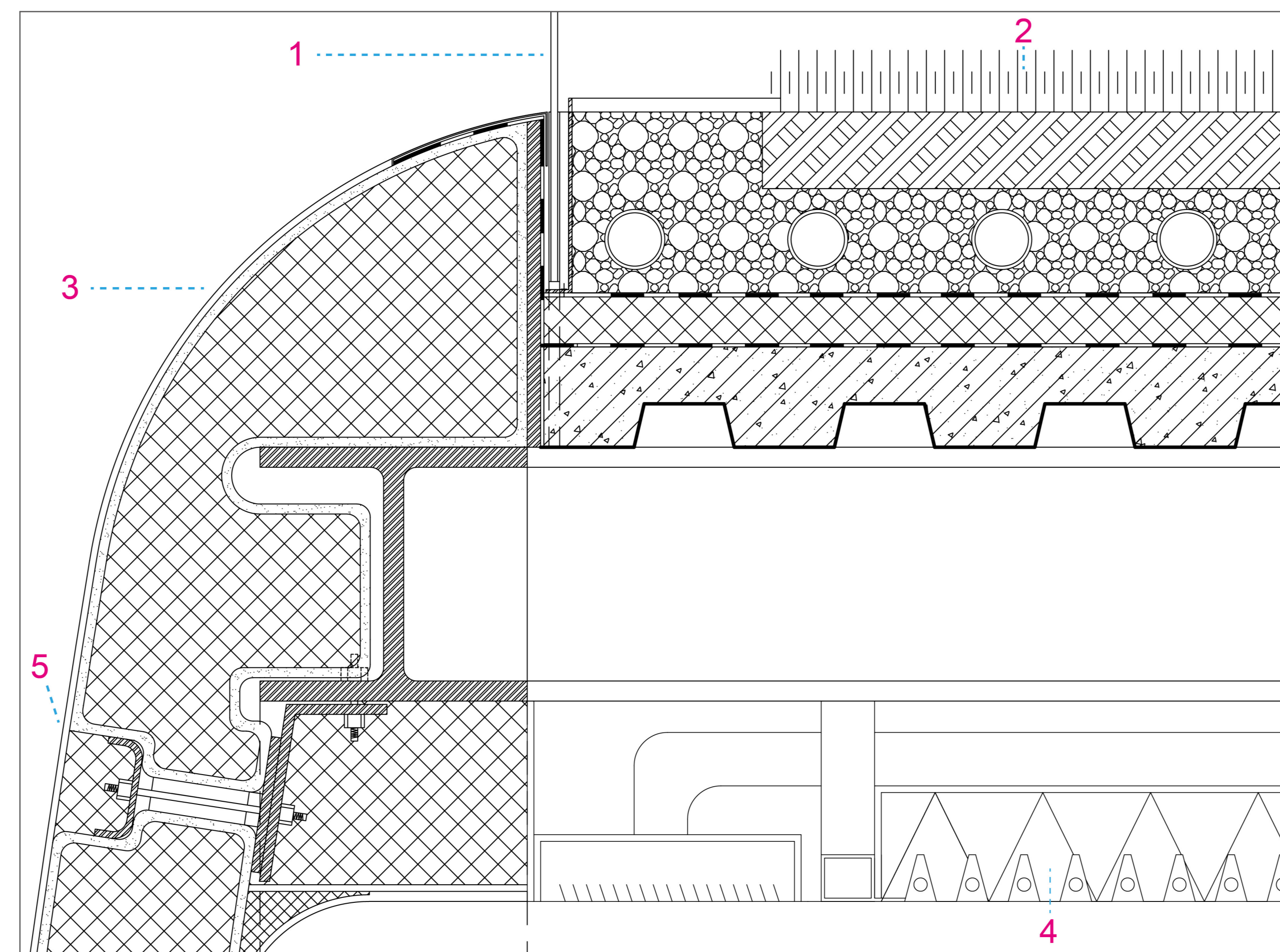




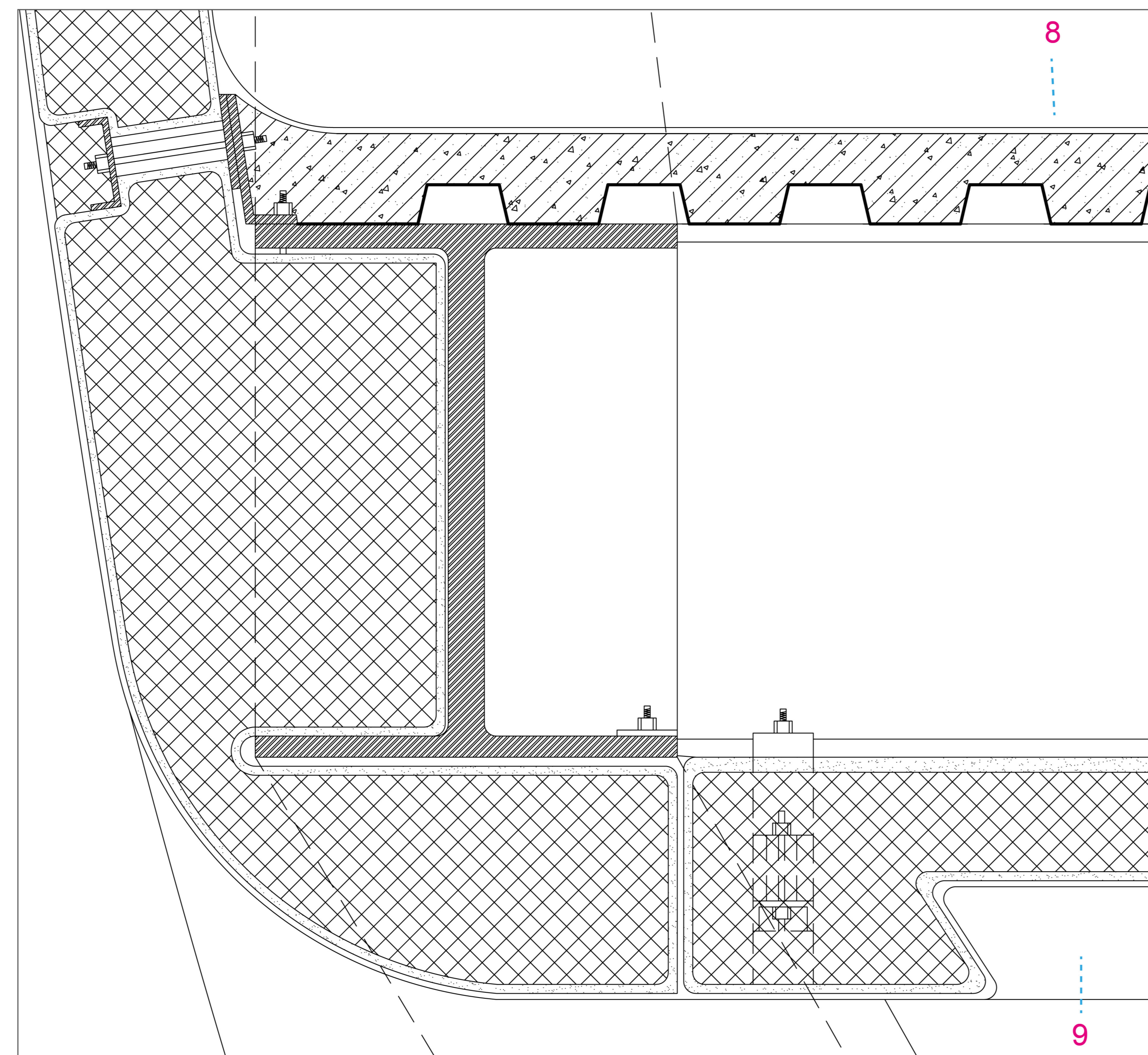
Horizontal Section of Fragment 1: 20



Detail 6 1:5

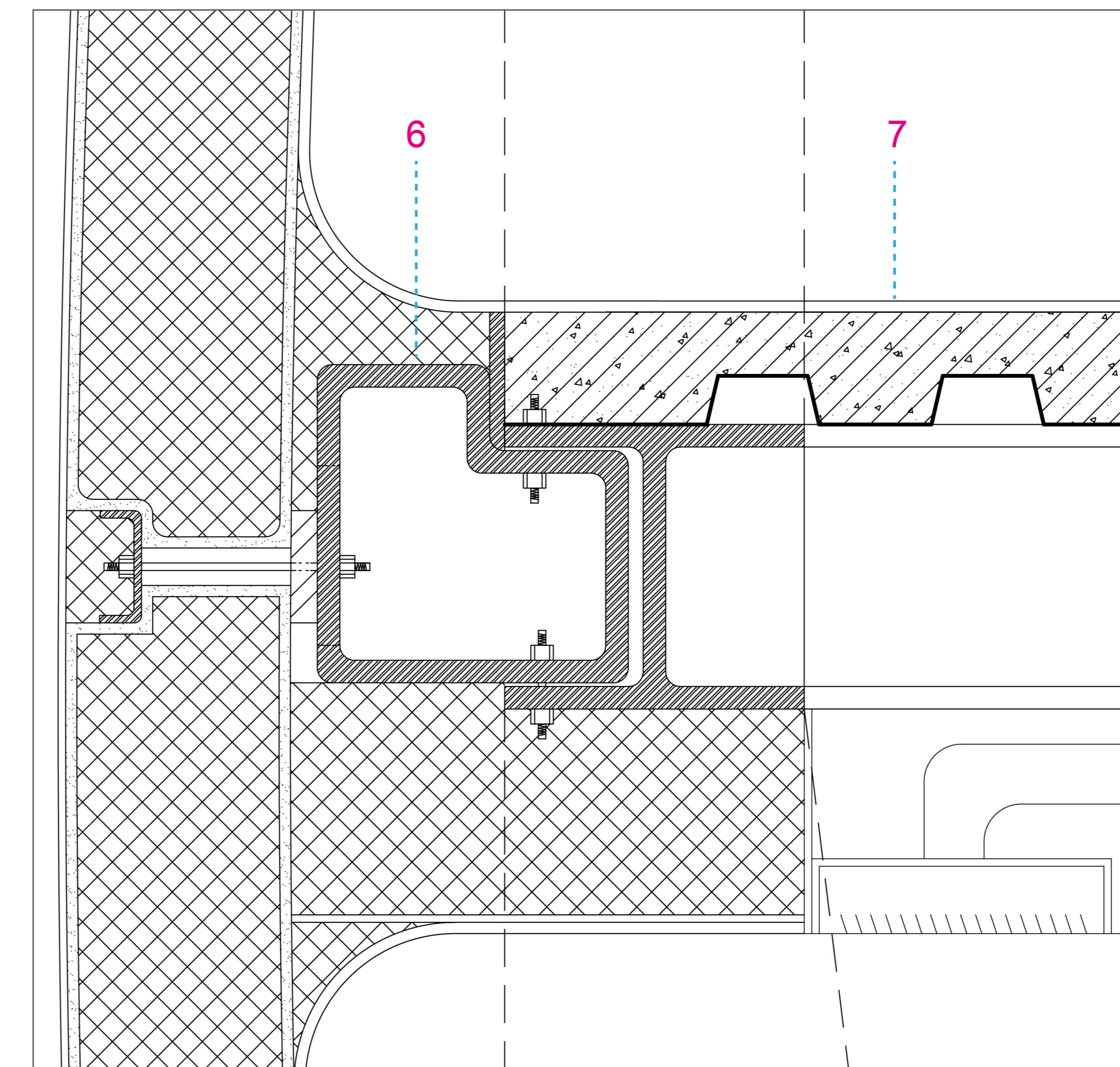


Detail 1 1:5

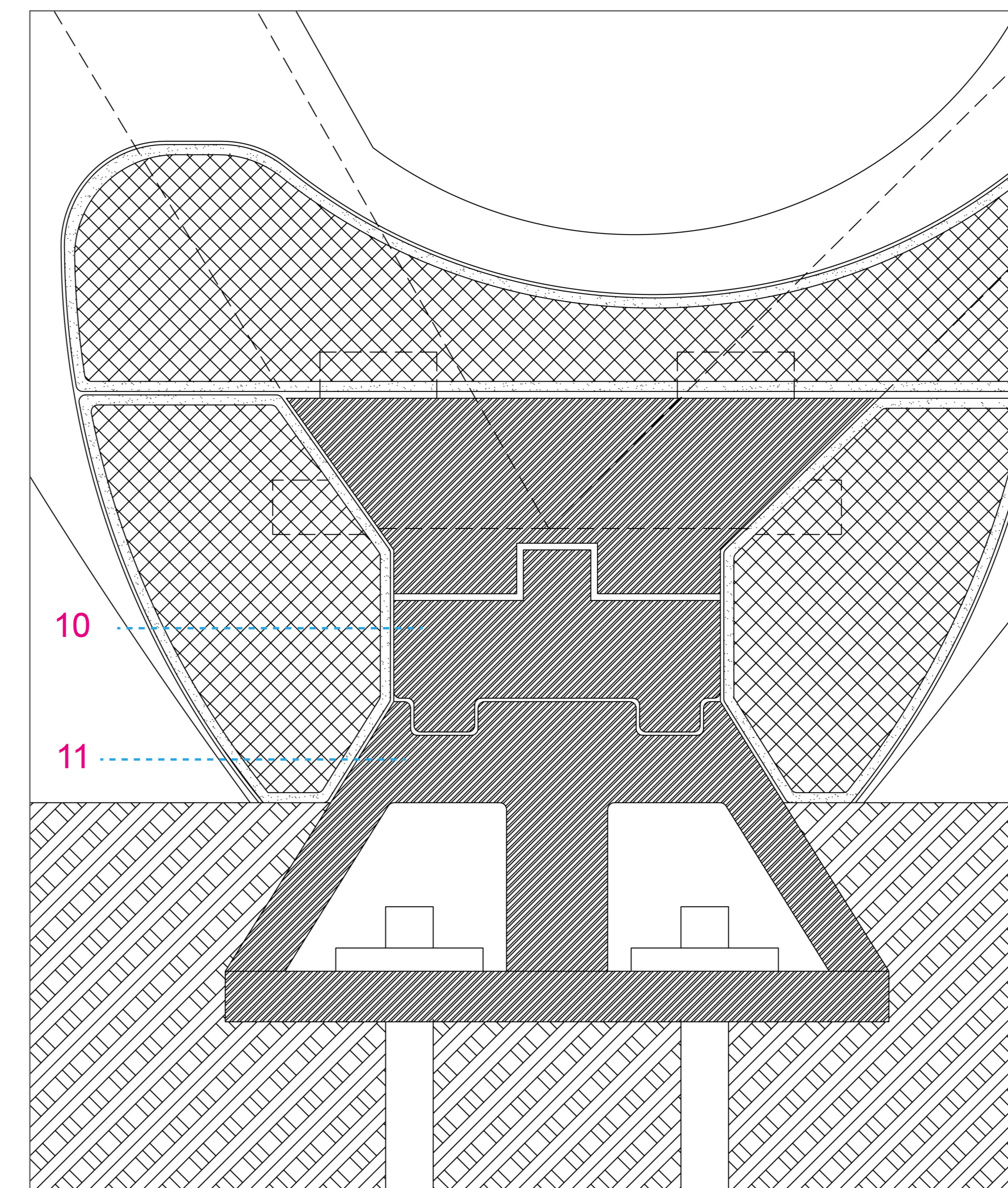


Detail 3 1:5

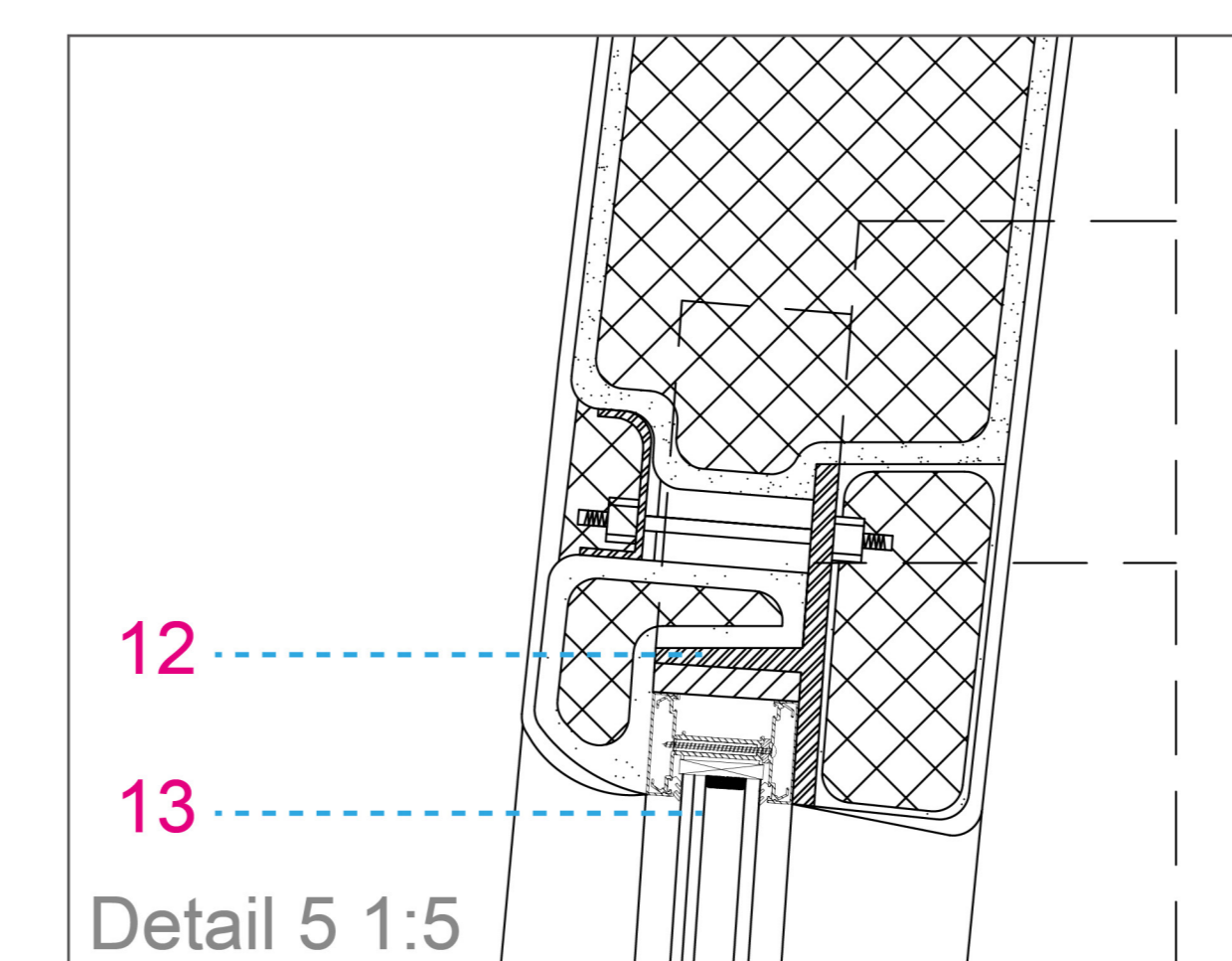
- | | | |
|--|--|--|
| 1 Laminated safety glass | 5 Filling thermal insulation | 12 Pre fabricated steel element (connected to structure) |
| 2 Light vegetation | 6 Pre-fabricated steel component | 13 Laminated acoustical glass with low-e coating |
| Soil | 7 Carbon composite coating | 14 Finish coating |
| Gravel combined with drain pipe | Floor with profiled steel sheet | CNC- cut EPS with cement coating |
| Thermal insulation | I beam | Steel Structure |
| Waterproofing layer | 8 Carbon composite coating | 15 Pre-fabricated element for connecting eps componets |
| Floor with profiled steel sheet | Floor with profiled steel sheet | 16 CNC-cut pockets for showing products and storage |
| I beam | I beam | |
| 3 Carbon composite coating with re-inforced mesh | 9 Noise reflection pocket | |
| CNC- cut EPS with 15mm cement coating | 10 Stainless-steel hinge bolt in sliding bearing | |
| 4 Ceiling Cooling | 11 cast-steel element fixed in foundation | |



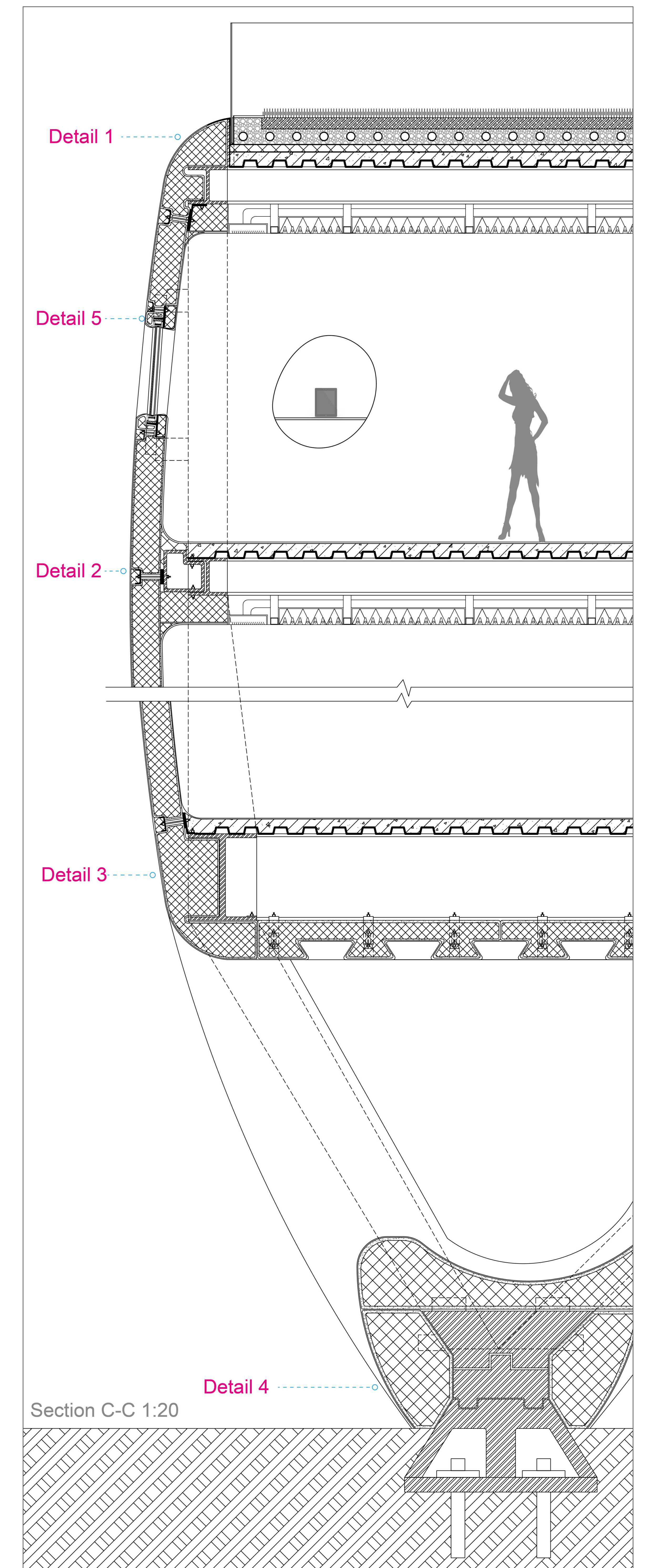
Detail 2 1:5



Detail 4 1: 10



Detail 5 1:5



Section C-C 1:20