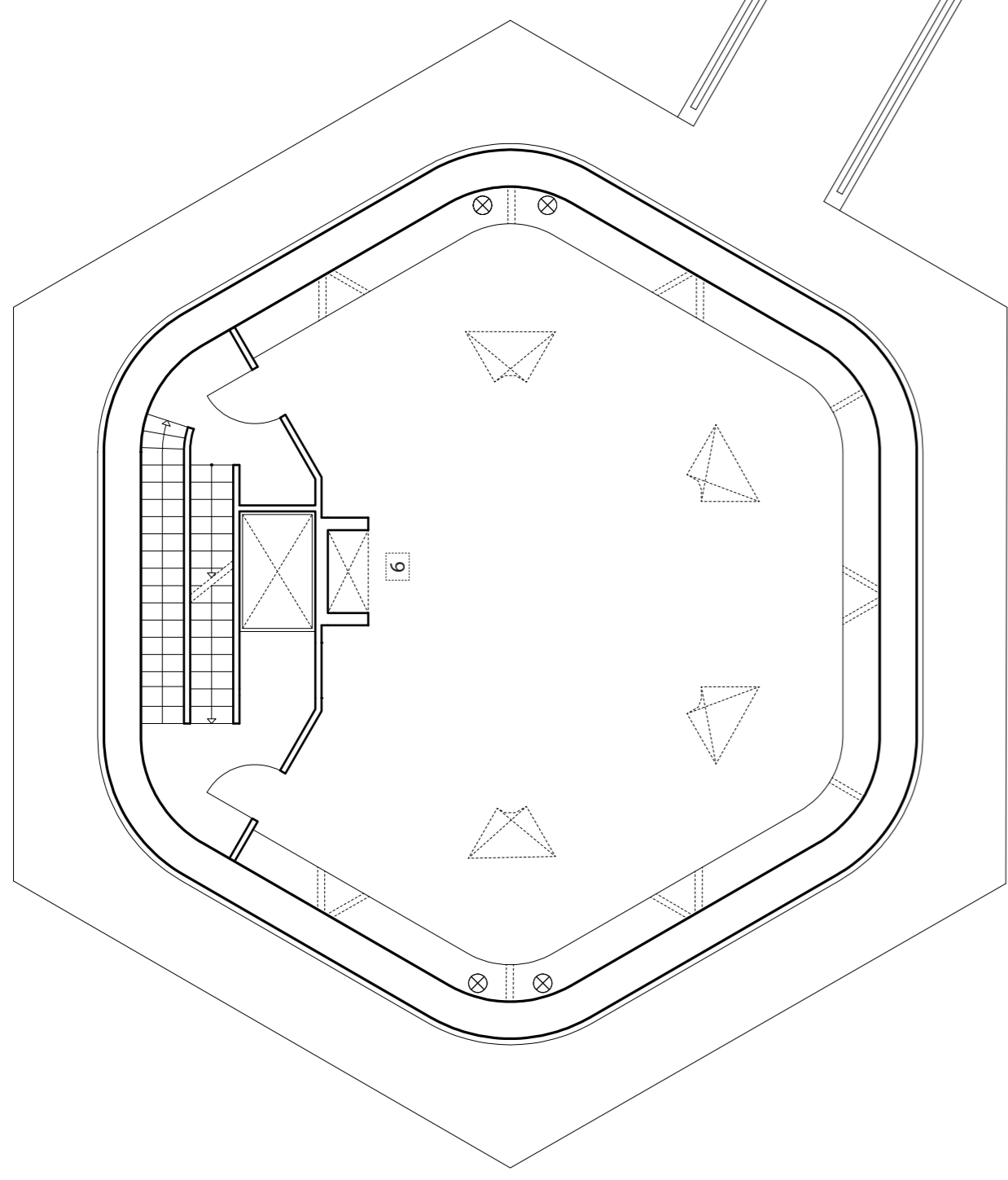
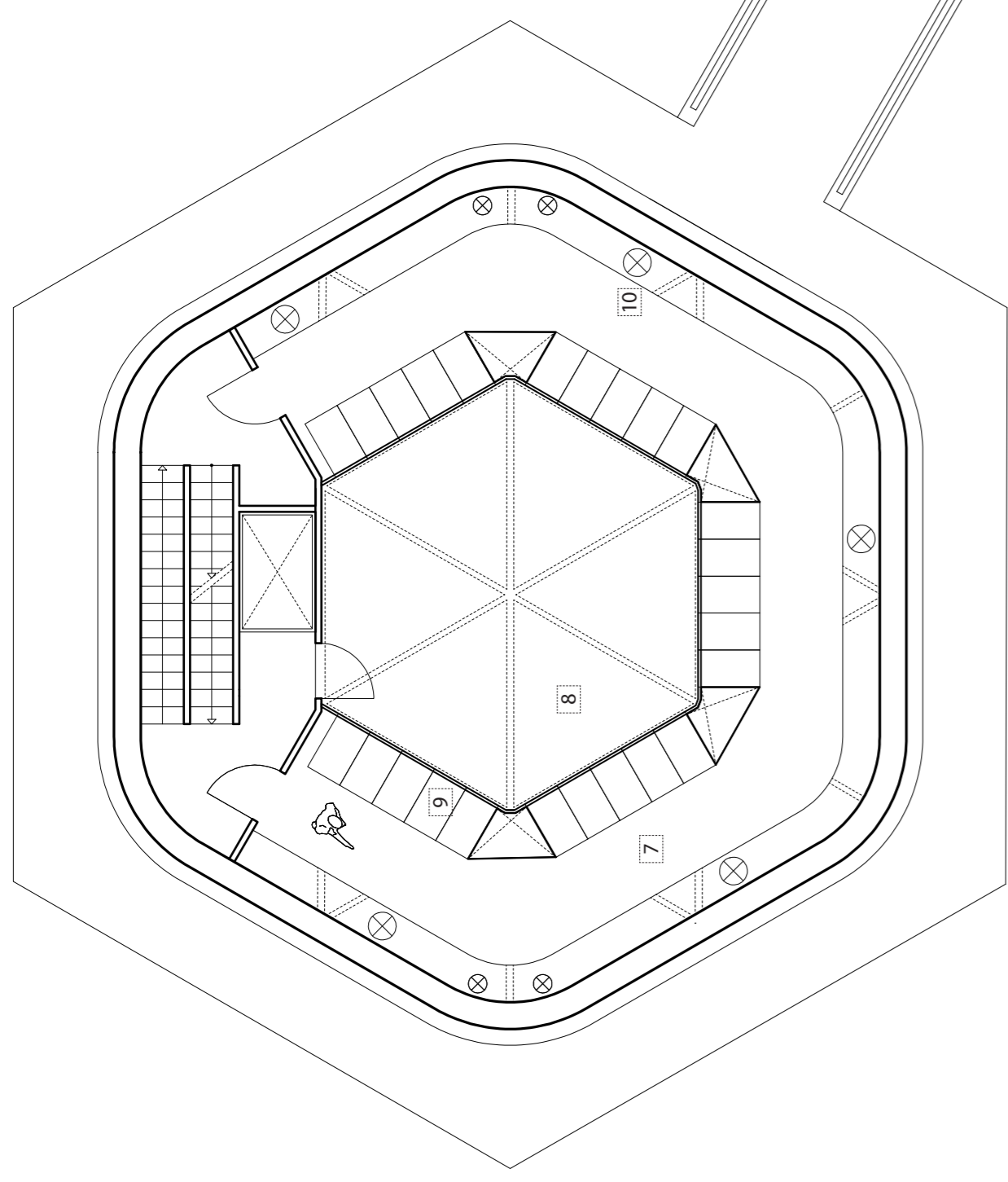


1ST FLOOR - TECHNICAL SPACE



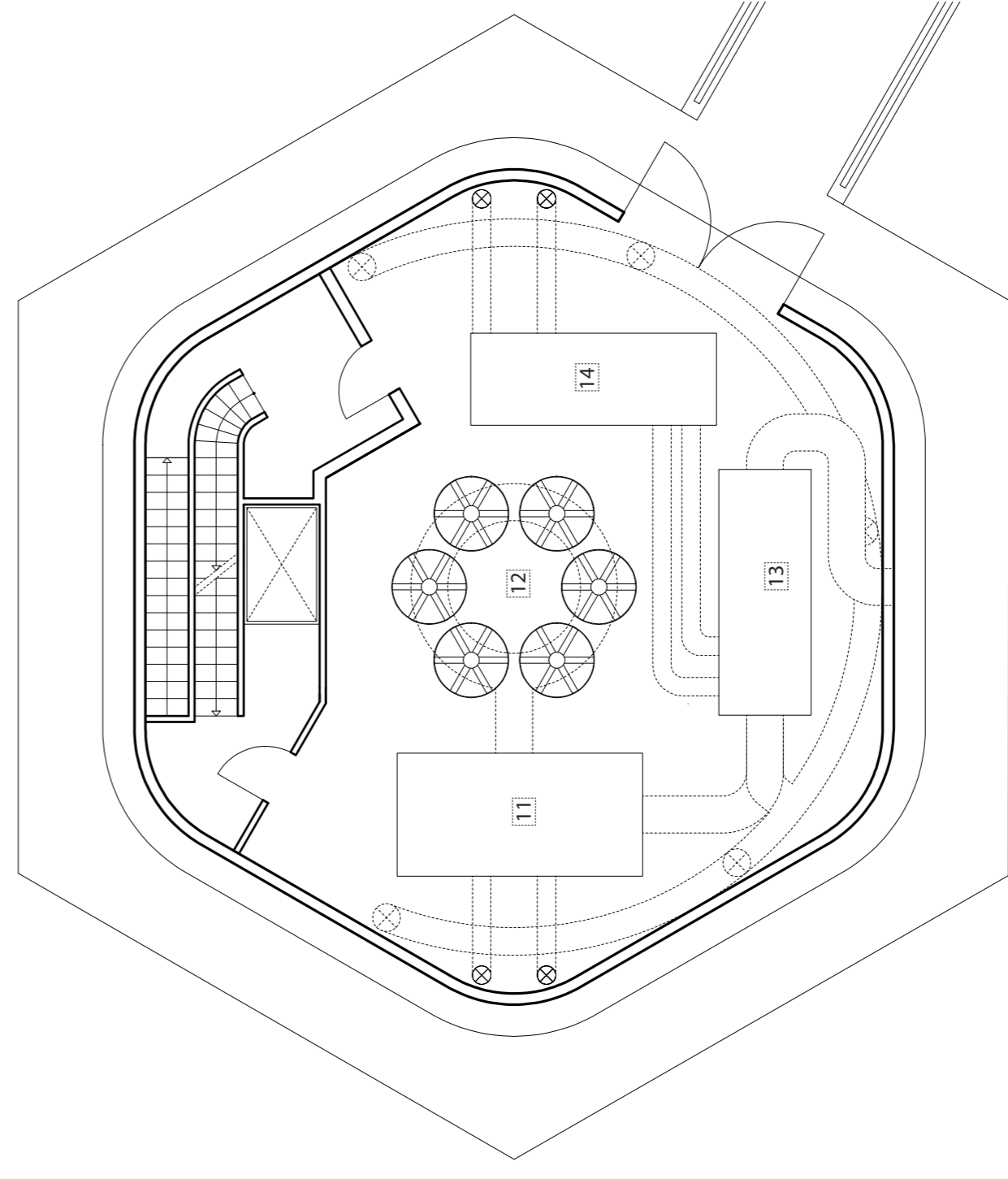
2ND FLOOR - BATTERIES AND TRANSFORMATORS



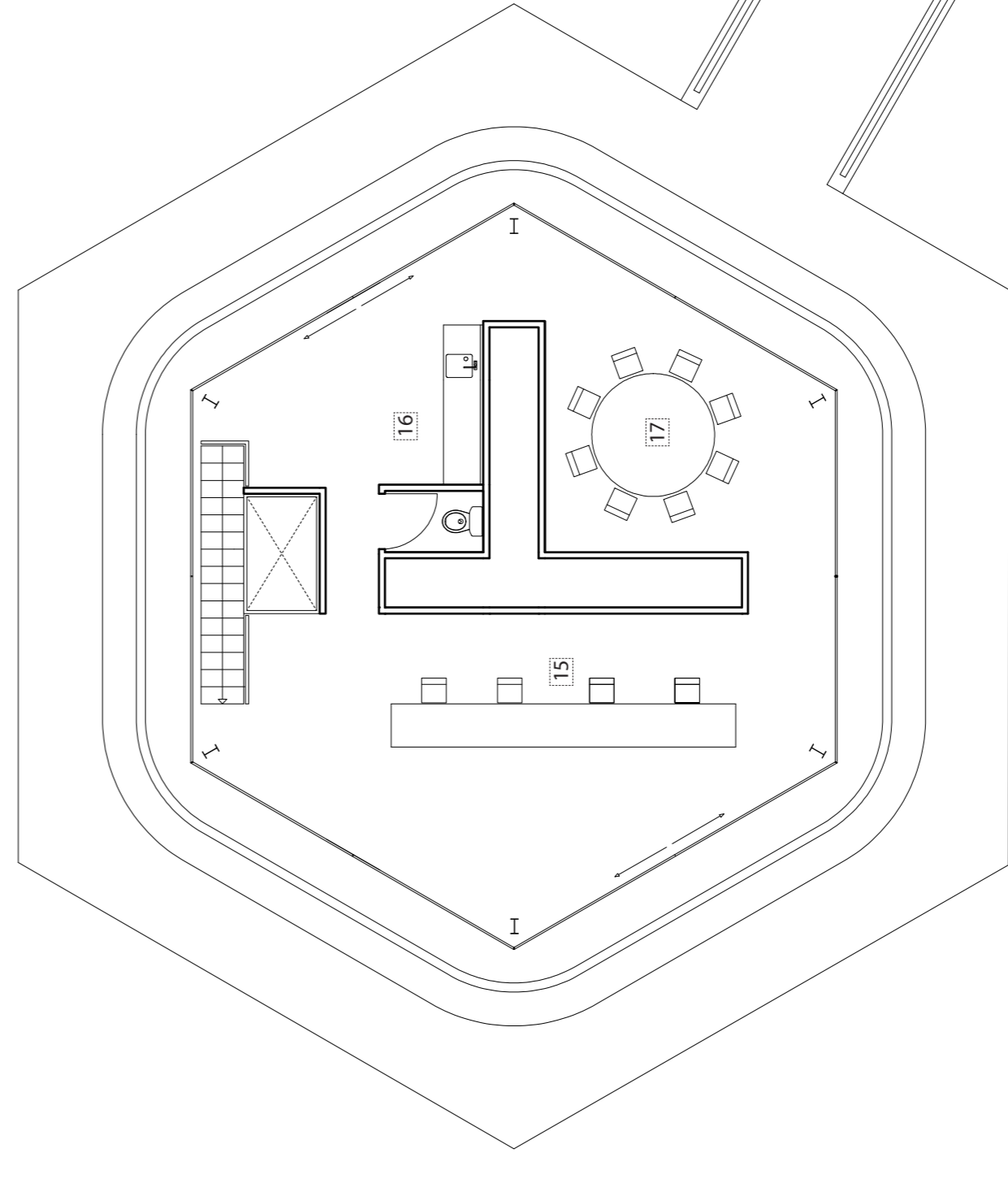
5TH FLOOR - SERVER SPACE AROUND HOT CORE

FLOORPLANS DATA TOWER 1:100

- 1 plate heat exchanger (circuit to heatpump)
- 2 shaft for cables and waterpipes
- 3 diesel generator
- 4 plate heat exchanger (circuit to chiller)
- 5 transport door (3000 mm x 3000 mm)
- 6 shaft for network cables and electricity
- 7 cold aisle
- 8 hot core
- 9 server
- 10 cooling air ventilation duct
- 11 air to water heatpump
- 12 industrial blowers
- 13 airhandling unit with heat recovery
- 14 water chiller
- 15 computer control room
- 16 pantry and toilet
- 17 meeting space



12TH FLOOR - TECHNICAL SPACE



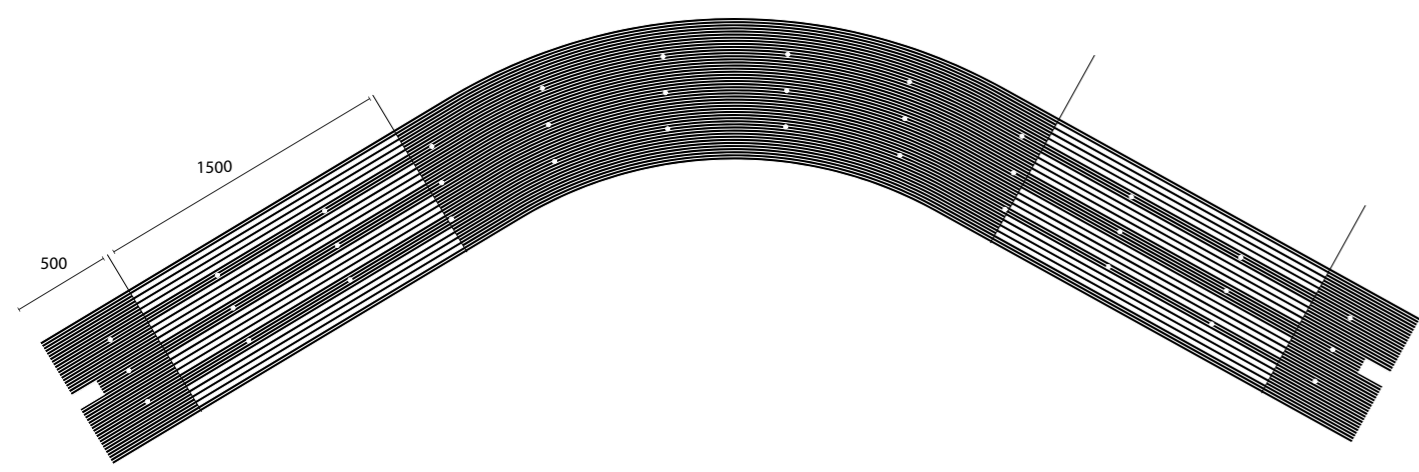
13TH FLOOR - OFFICE AND VIEWPOINT





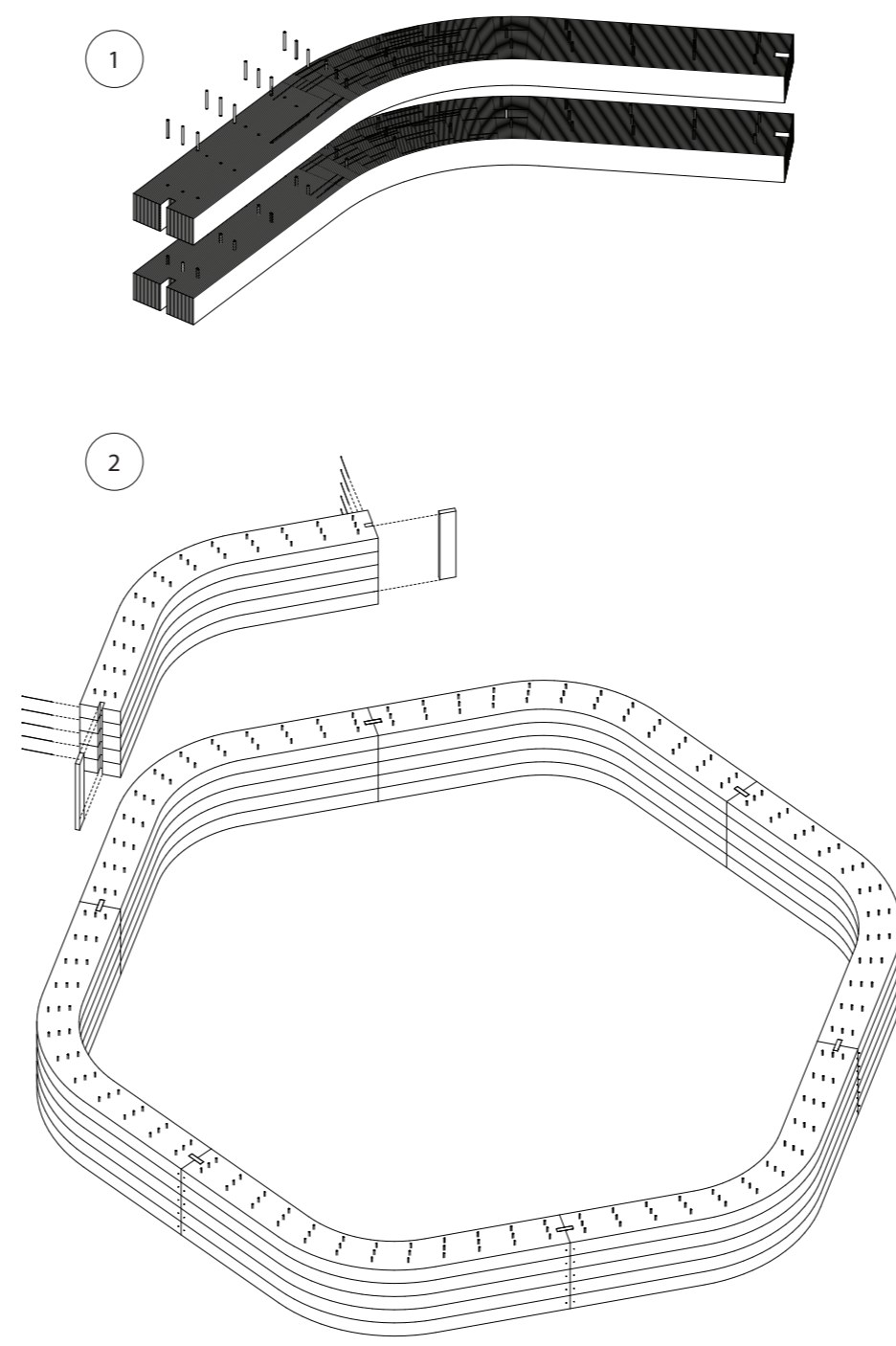
**MASTERPLAN 1:1000**

- 1 path to data center
- 2 hot spring / 2750 m<sup>2</sup>
- 3 cold bath / 100 m<sup>2</sup>
- 4 hot spring / 1550 m<sup>2</sup>
- 5 silversand hill
- 6 showers
- 7 hot spring bathhouse
- 8 data tower
- 9 path to hot spring
- 10 parking area
- 11 heliophytes field (farm/ shop and restaurant)
- 12 lookout point
- 13 heliophytes field



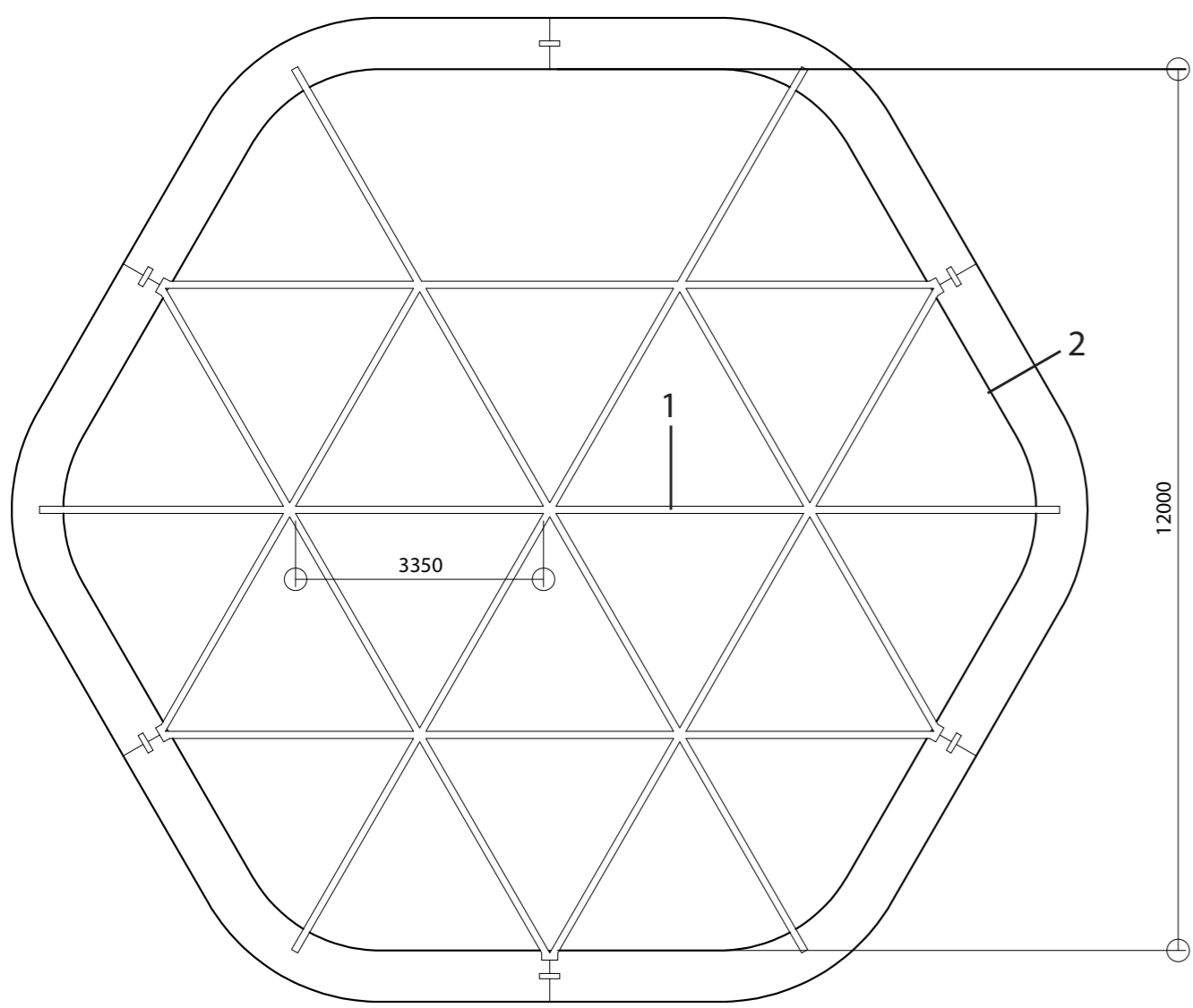
**WOOD REDUCTION AT THE STRAIGHT PARTS**

- 1 15 mm wood parts are open alternately
- 2 air functions as insulation



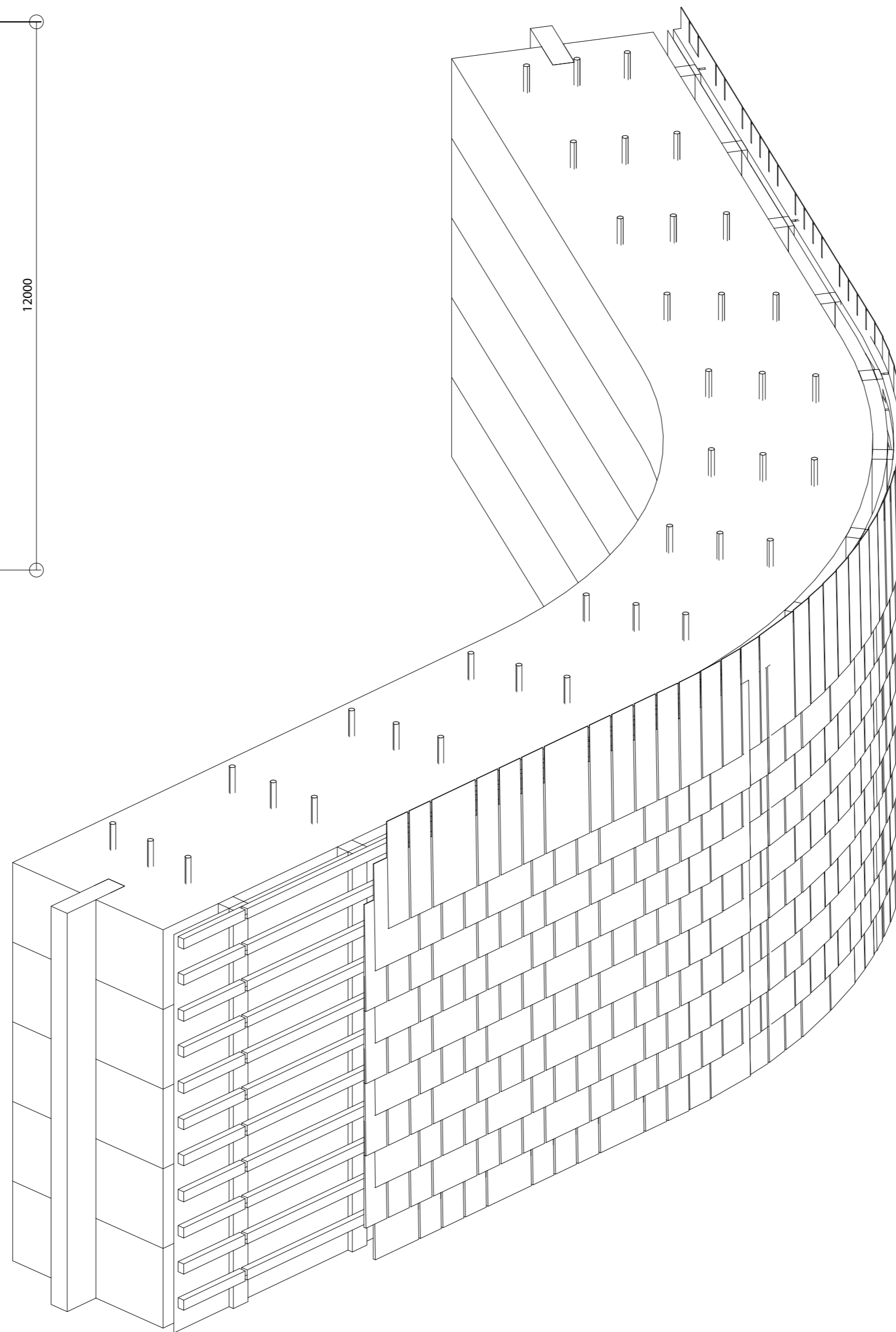
**BUILDING ORDER**

- 1 prefabricating parts with hardwood beech dowels
- 2 modular parts to building site
- 3 assemble first floor
- 4 place the floors in the wood shell



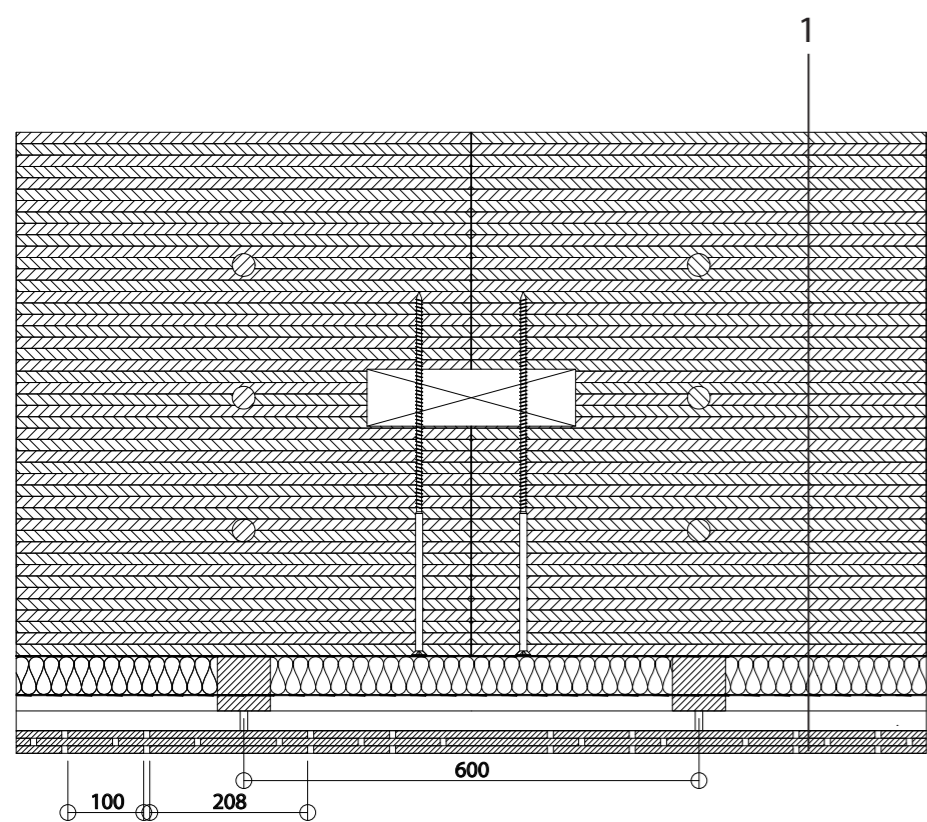
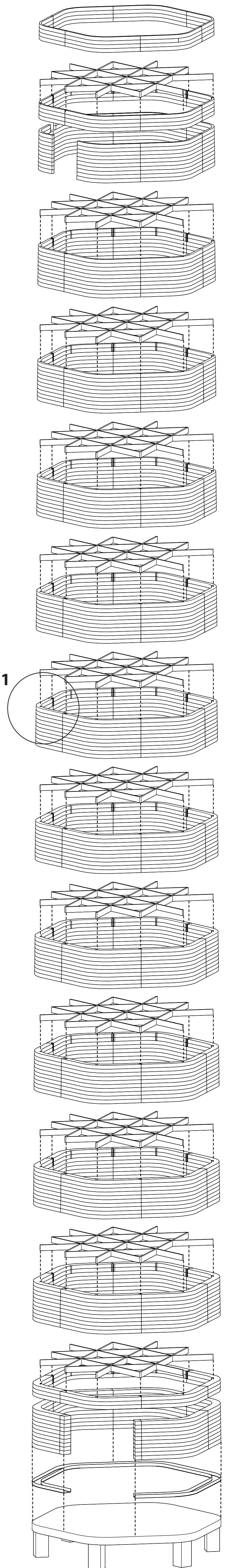
**LOADBEARING CONSTRUCTION BEAM GRID**

- 1 540/115 mm glulam beam
- 2 690 - 150 mm laminated pine wood



**ISOMETRIC WALL CONSTRUCTION**

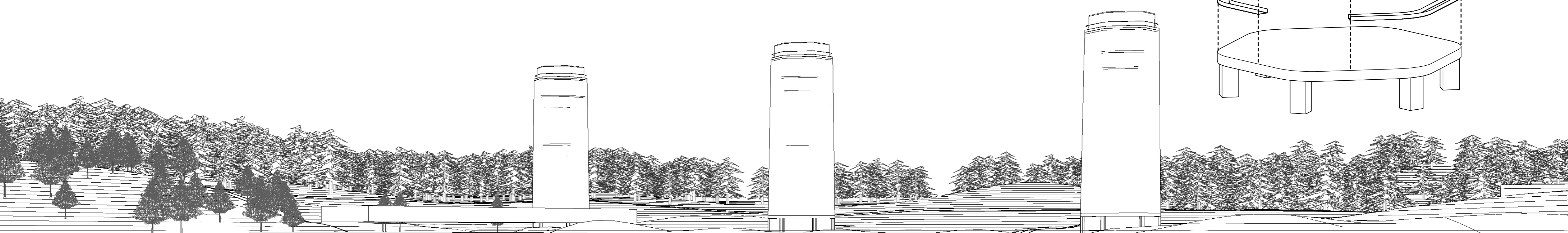
**H1**

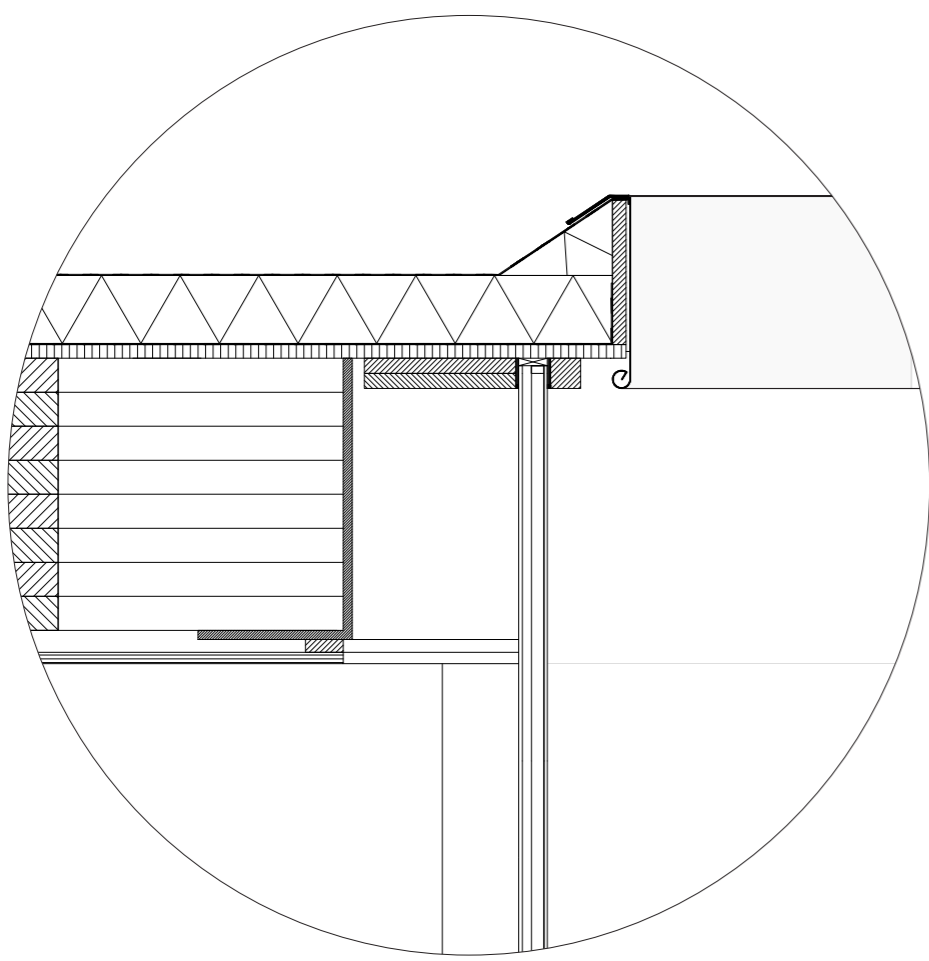
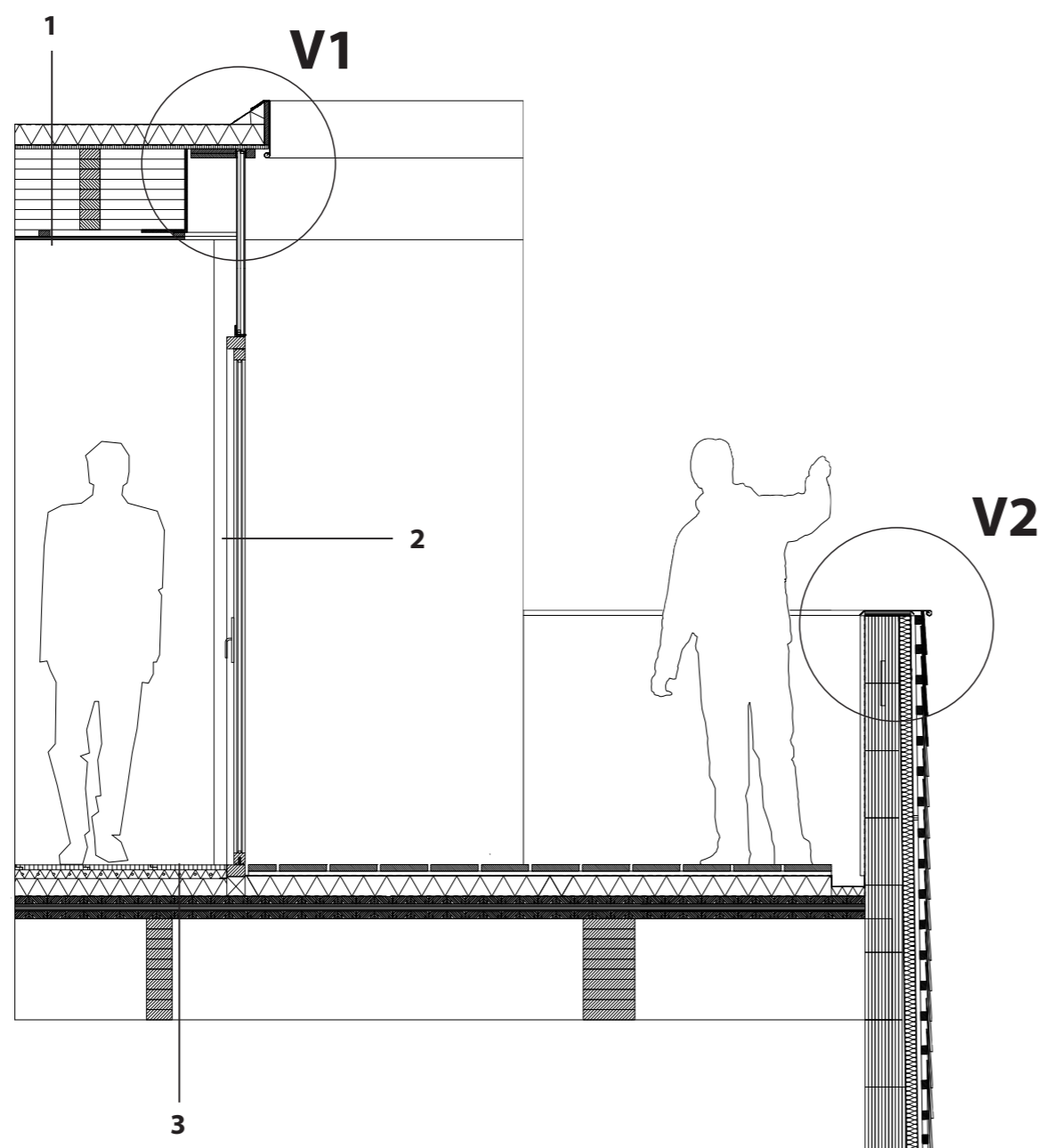


**H1 - HORIZONTAL SECTION SCALE 1:5**

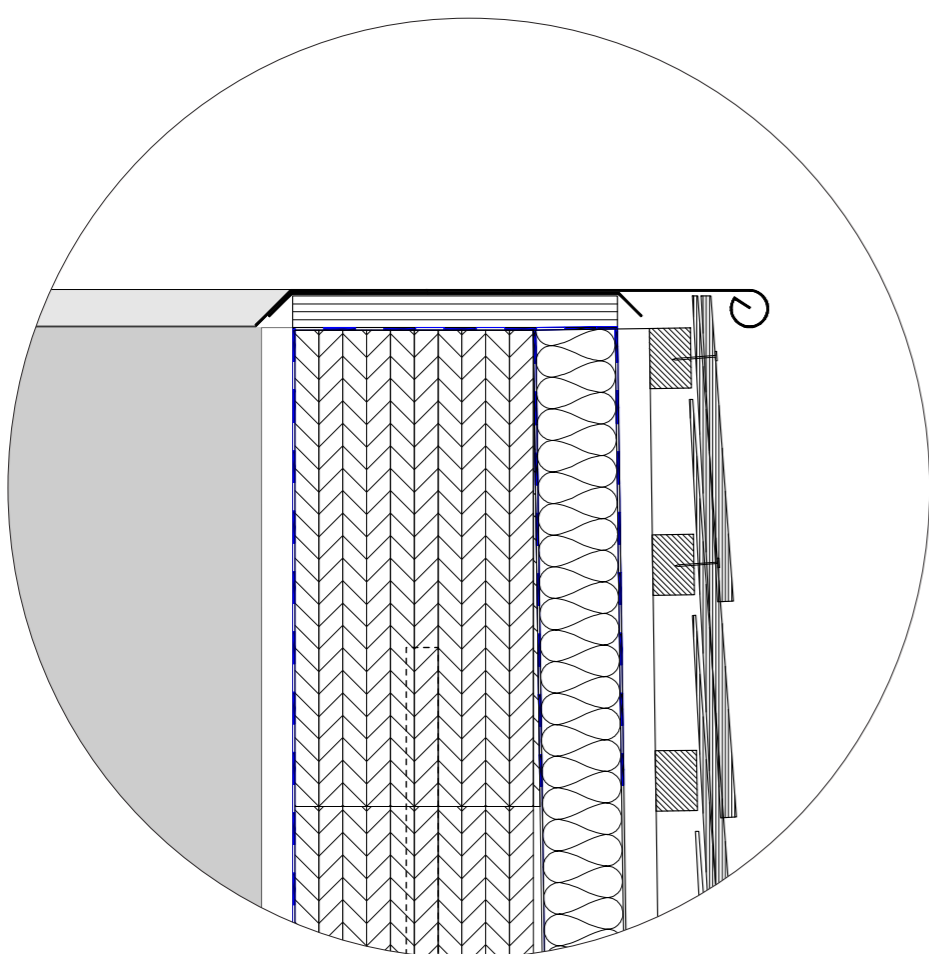
**Horizontal section 1:20**

- 1 400x10 mm split larch shingles triple layer
- 38x26 mm horizontal battens
- 20 mm vertical battens
- EPDM foil
- 50 mm vertical battens
- 50 mm insulation (flax)
- vapour barrier
- Laminated pine wood fastened with hardwood beech dowels

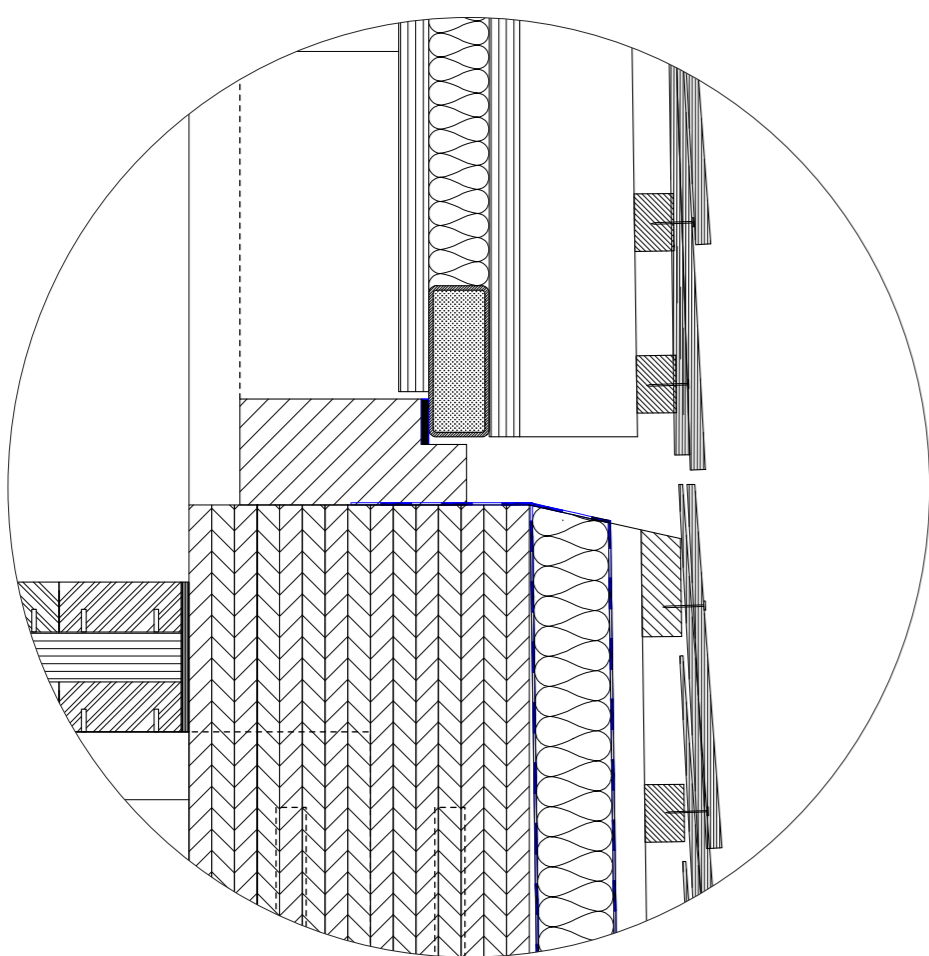




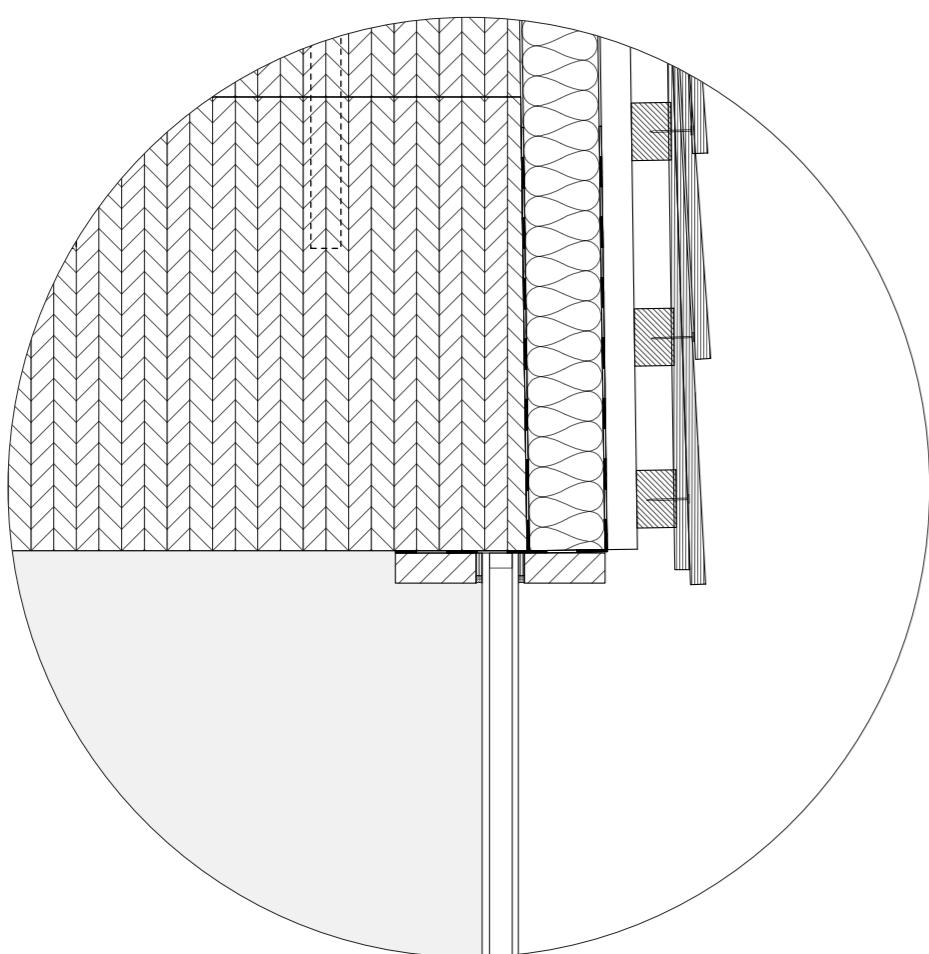
V1 - GLASS ROOF EDGE 1:10



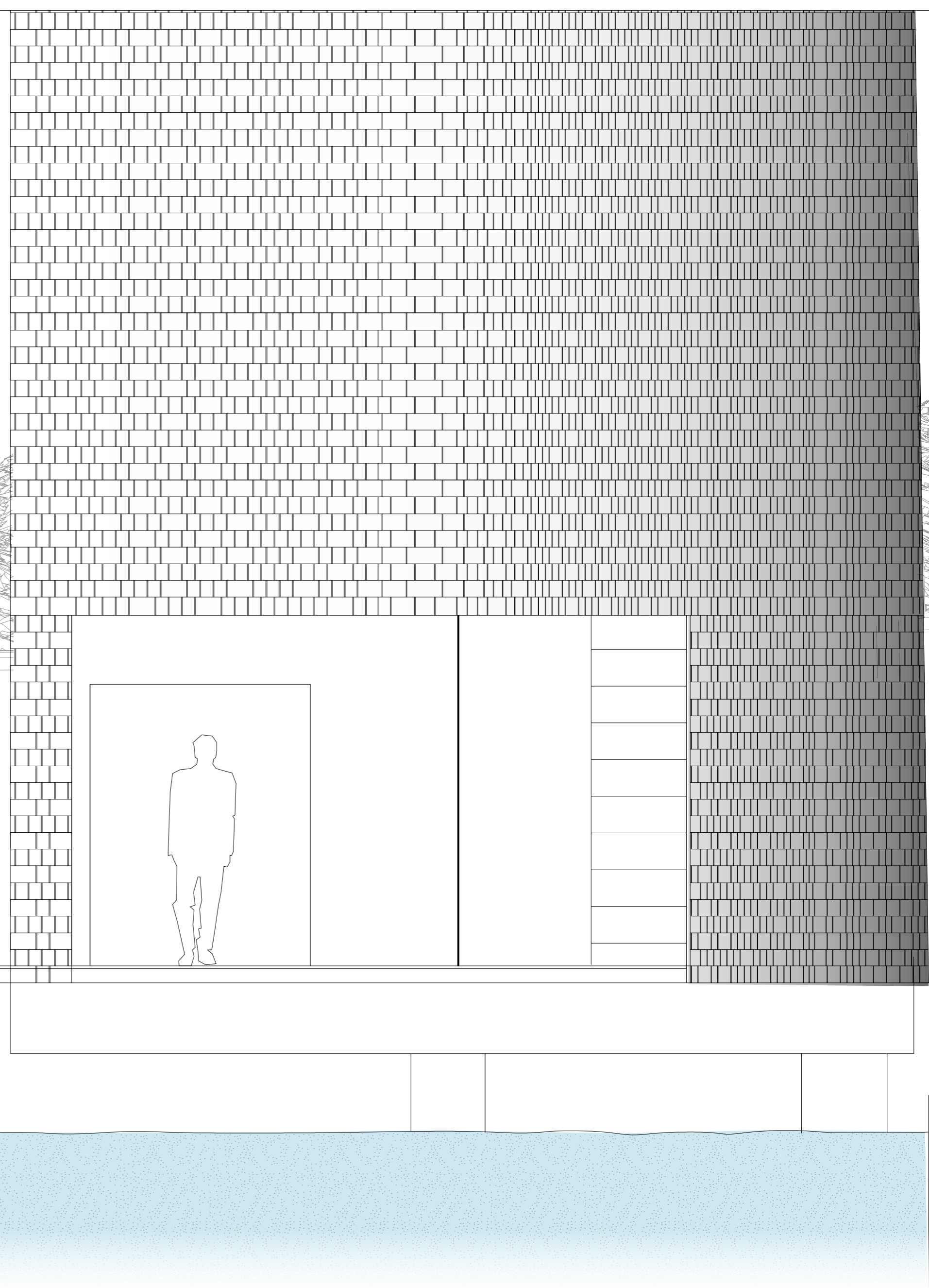
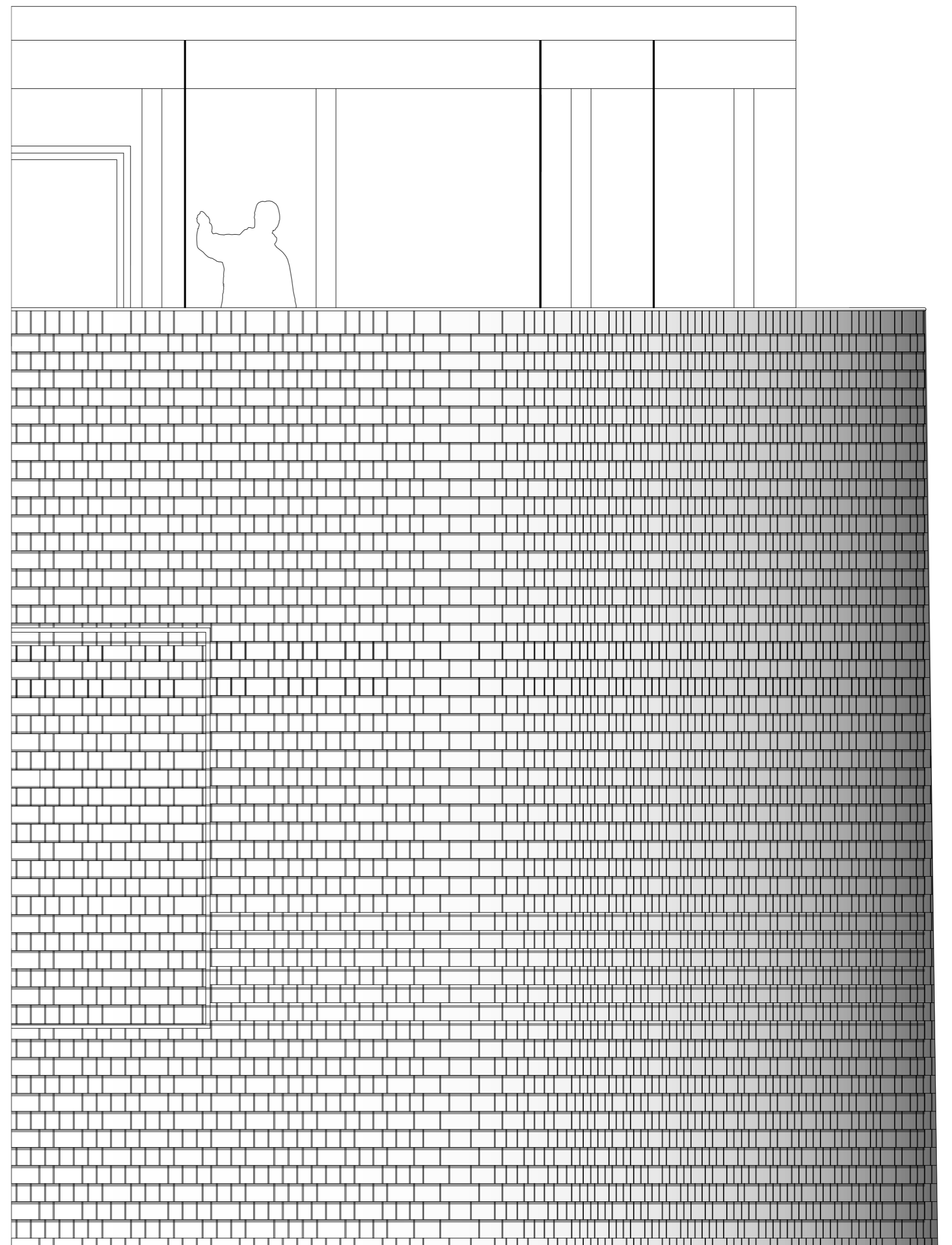
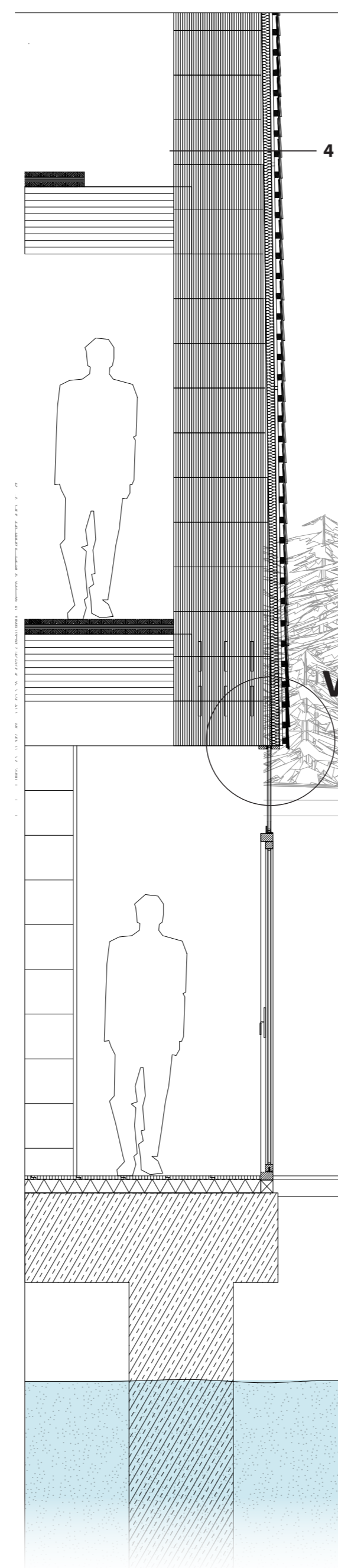
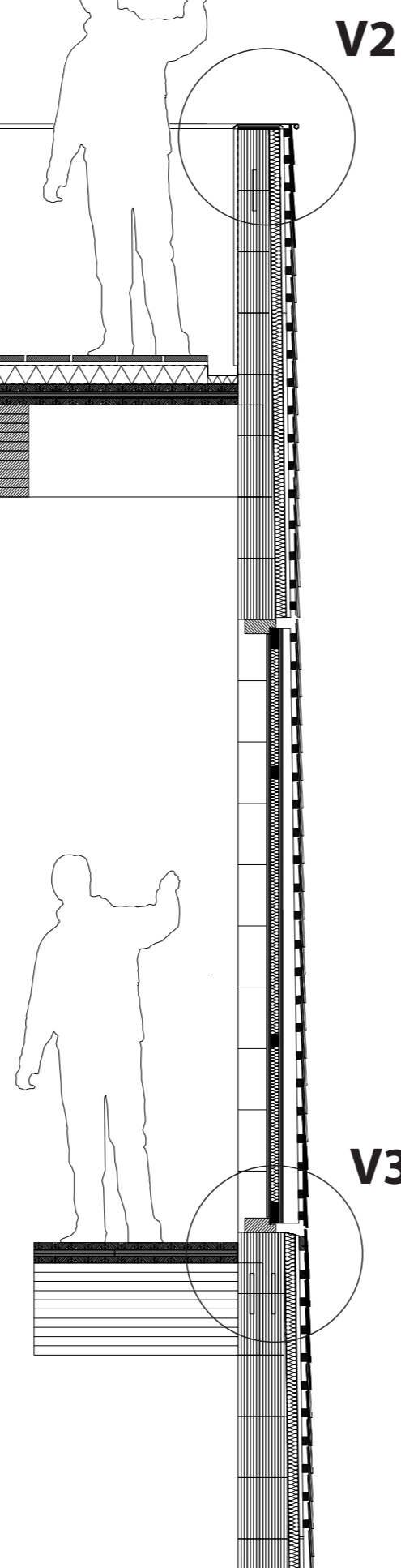
V2 - ROOF EDGE / BALUSTRADE 1:5



V3 - FACADE DOOR 1:5



V4 - GLASS ENTRANCE - WOODEN FACADE 1:5



Vertical section 1:20

- |   |   |  |
|---|---|--|
| <p>1 EPDM roof membrane<br/>90 mm insulation<br/>vapour barrier<br/>18 mm plywood sheet<br/>450/90 glulam beam<br/>25 mm timber battens<br/>wood finish different widths, t = 20 mm</p> | <p>3 resin floor finish<br/>22 mm tongue and groove plywood<br/>underfloor heating<br/>80 mm sound insulation<br/>vapour barrier<br/>99 mm CLT (3 layers)<br/>450/115 glulam beam</p> | <p>4 400x10 mm split larch shingles<br/>triple layer<br/>38x26 mm horizontal battens<br/>20 mm vertical battens<br/>EPDM foil<br/>50 mm vertical battens<br/>50 mm insulation<br/>vapour barrier<br/>Laminated pine wood fastened<br/>with hardwood beech dowels</p> |
| <p>2 cristal window<br/>(frameless solar control glass)</p>   |   |  |