



MSC4 HERITAGE & ARCHITECTURE P5 PRESENTATIE
ROTTERDAM HARBOUR HERITAGE STUDIO

JELMER VAN DER POEL 4157753

07-11-2017

L. MEIJERS, F. KOOPMAN, S. FISCHER, L. DE WIT



_ANALYSE

CONTEXT

GEBOUW

POSITIE

_ONTWERP

PROGRAMMA

CONCEPT

ONTWERP



1931



klm aerocarto / aviodrome copyright



1815



1890



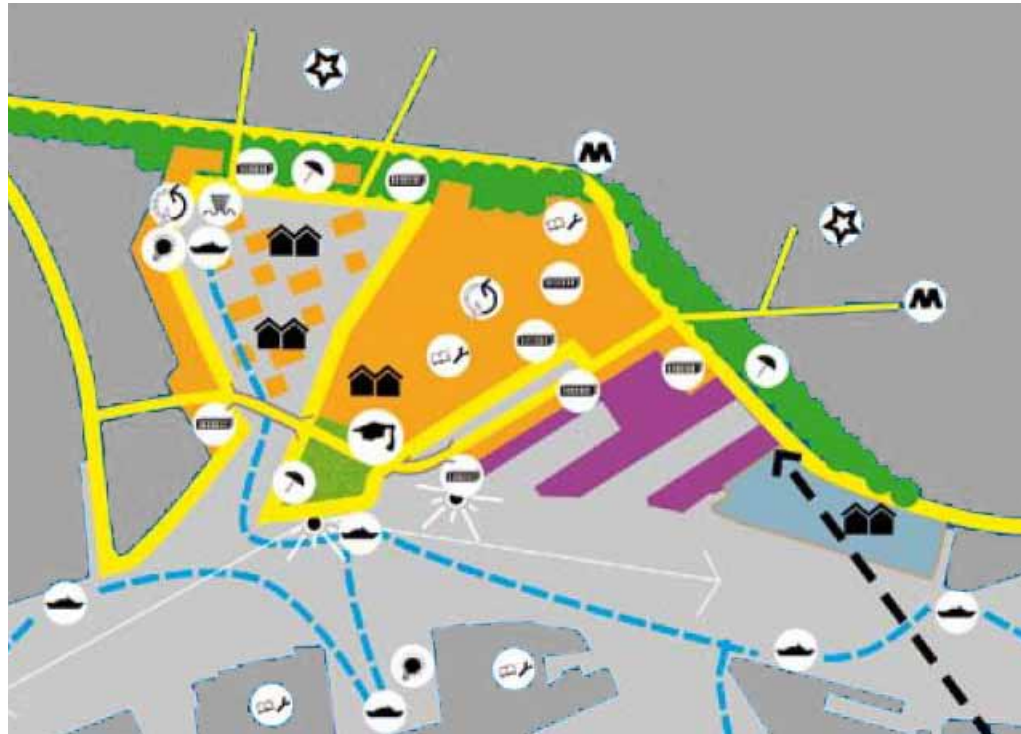
1920

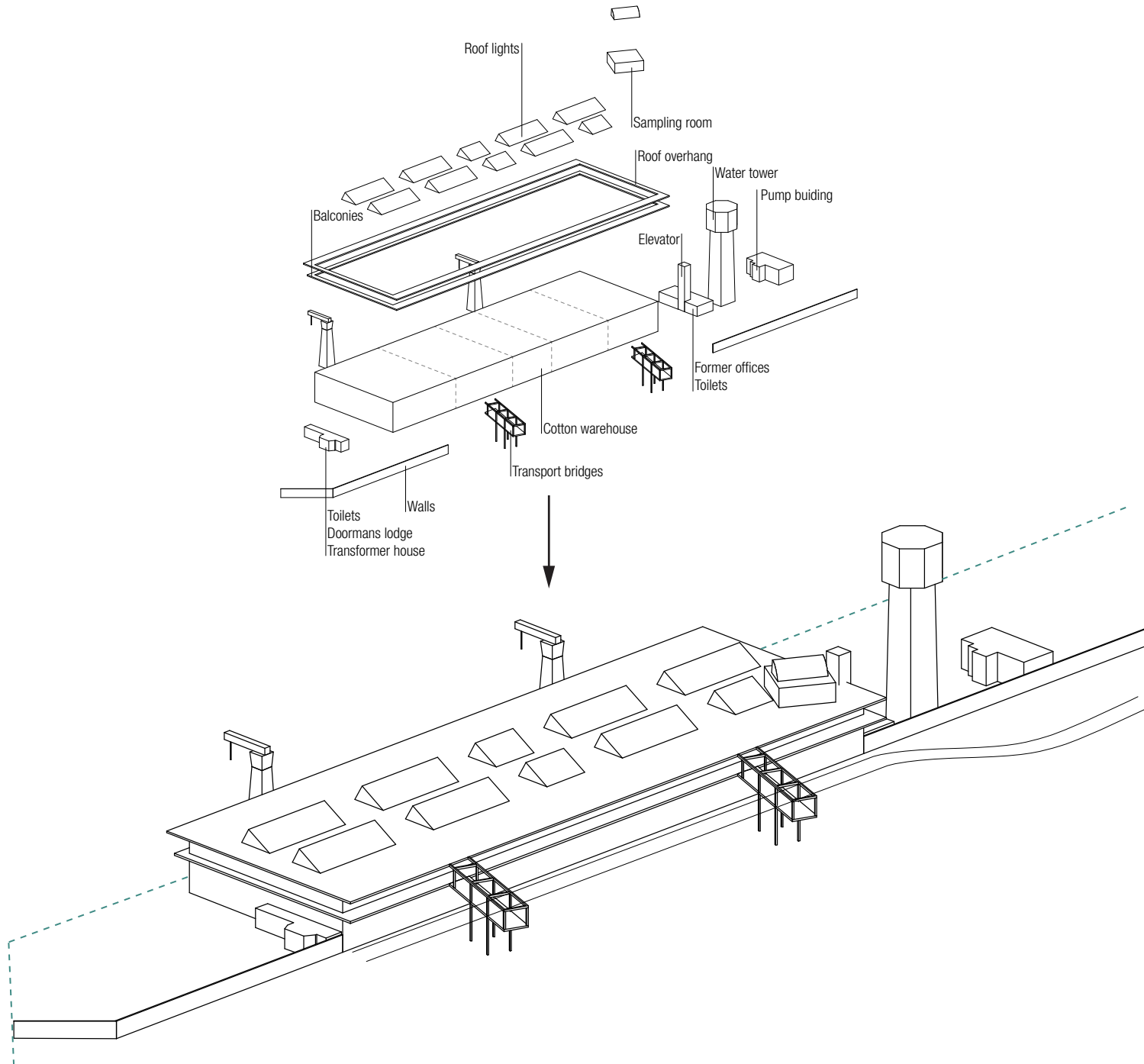


1970



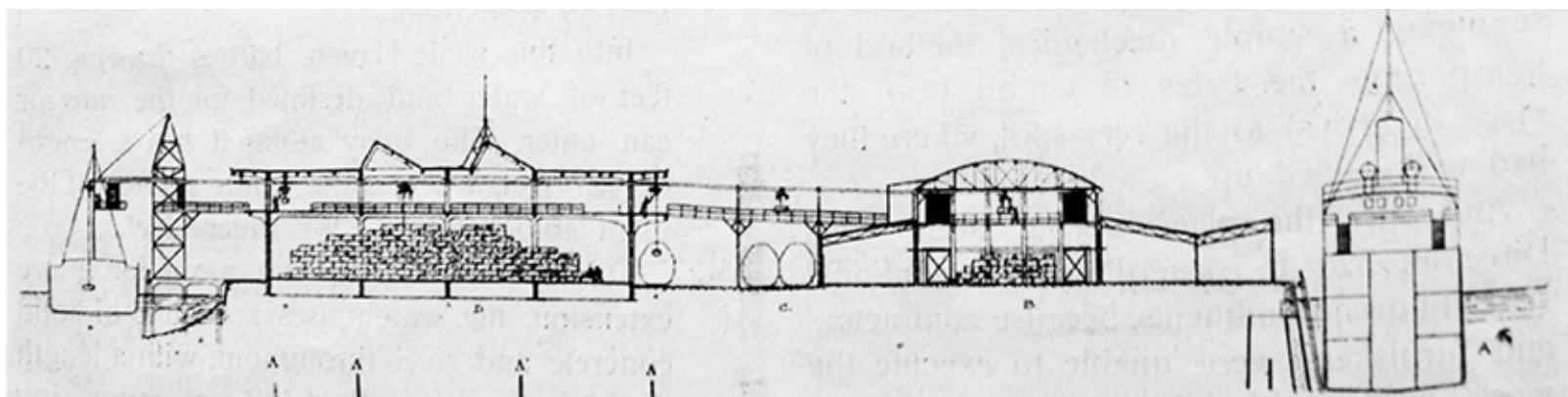




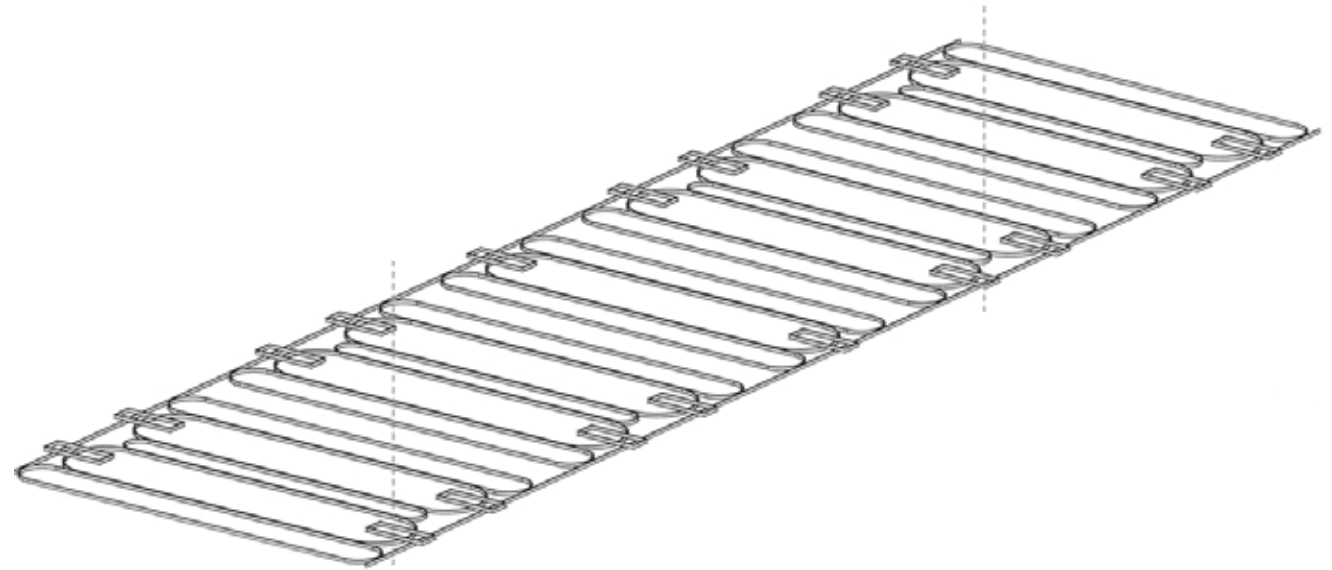
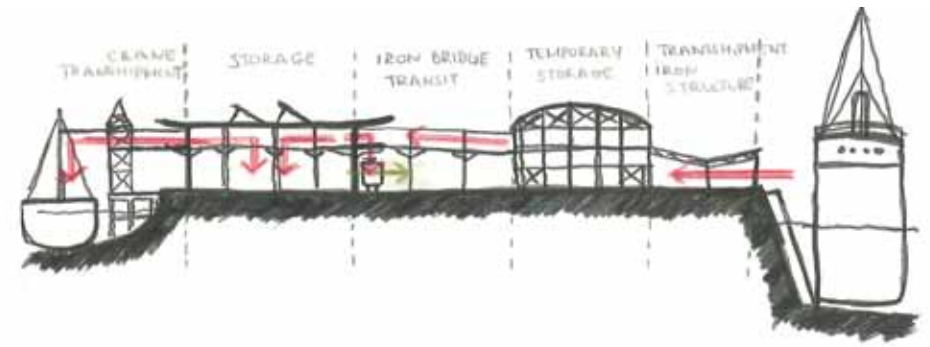
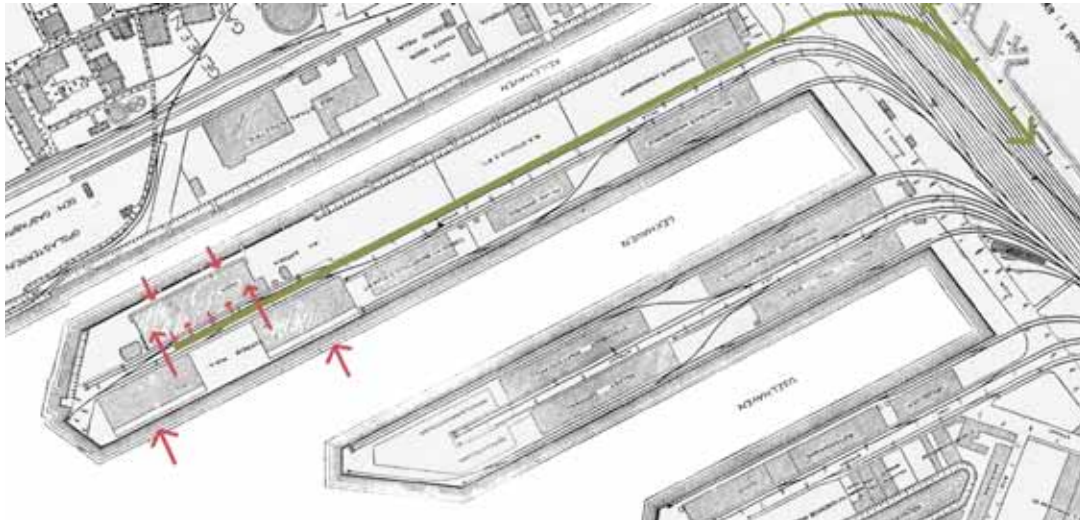


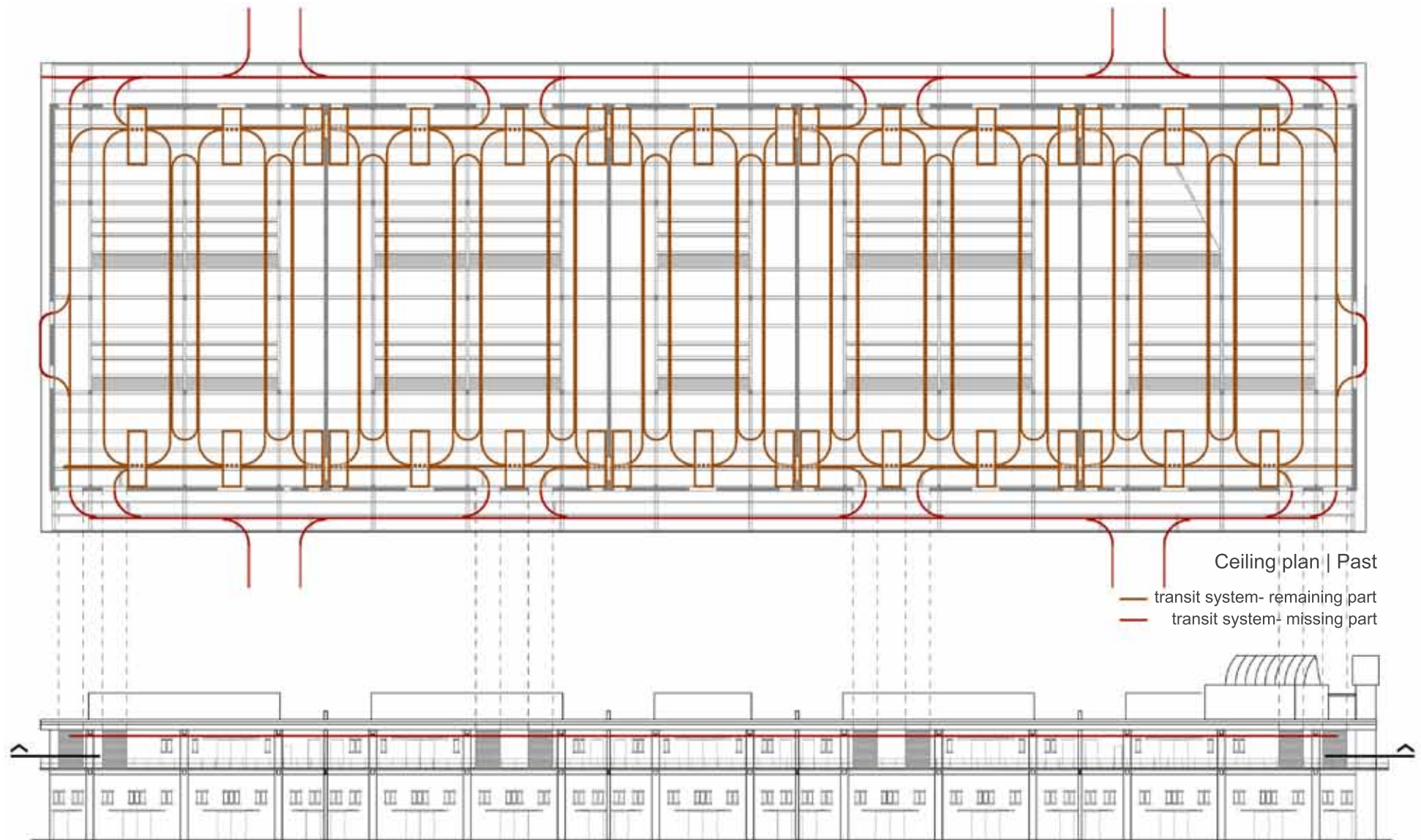


Katoenveem in gebruik, Gemeente archief Rotterdam



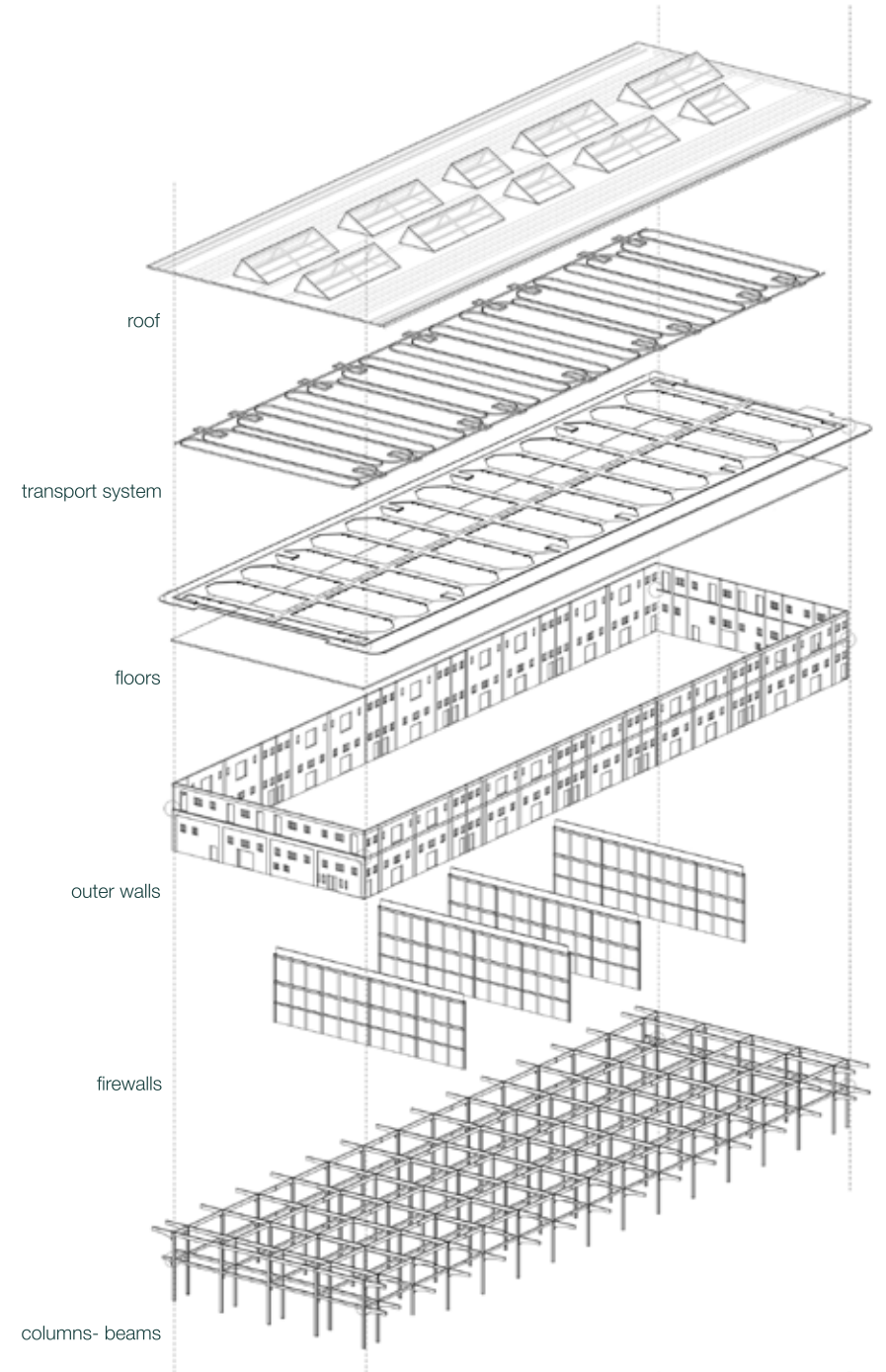
Originele doorsnede van het katoenveem, tijdschrift 'the pioneer'

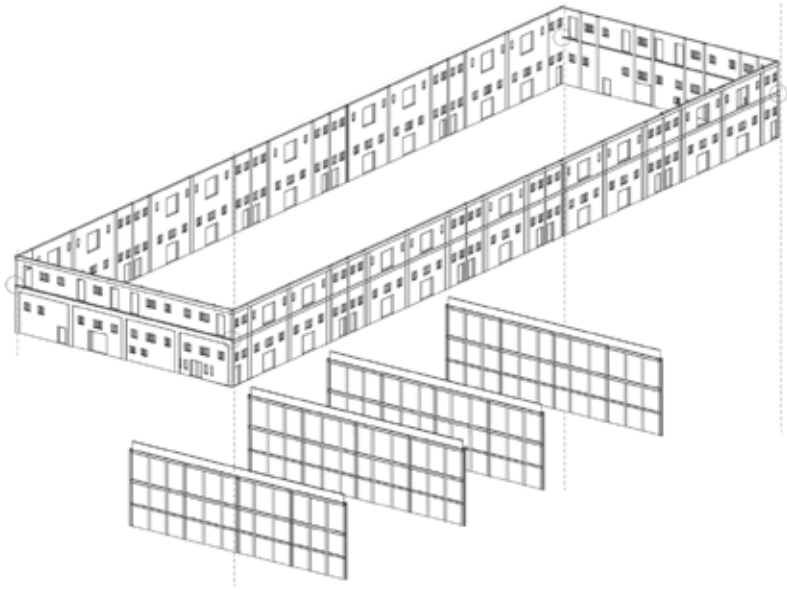
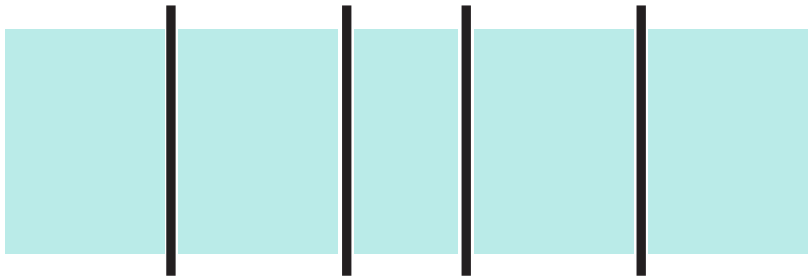




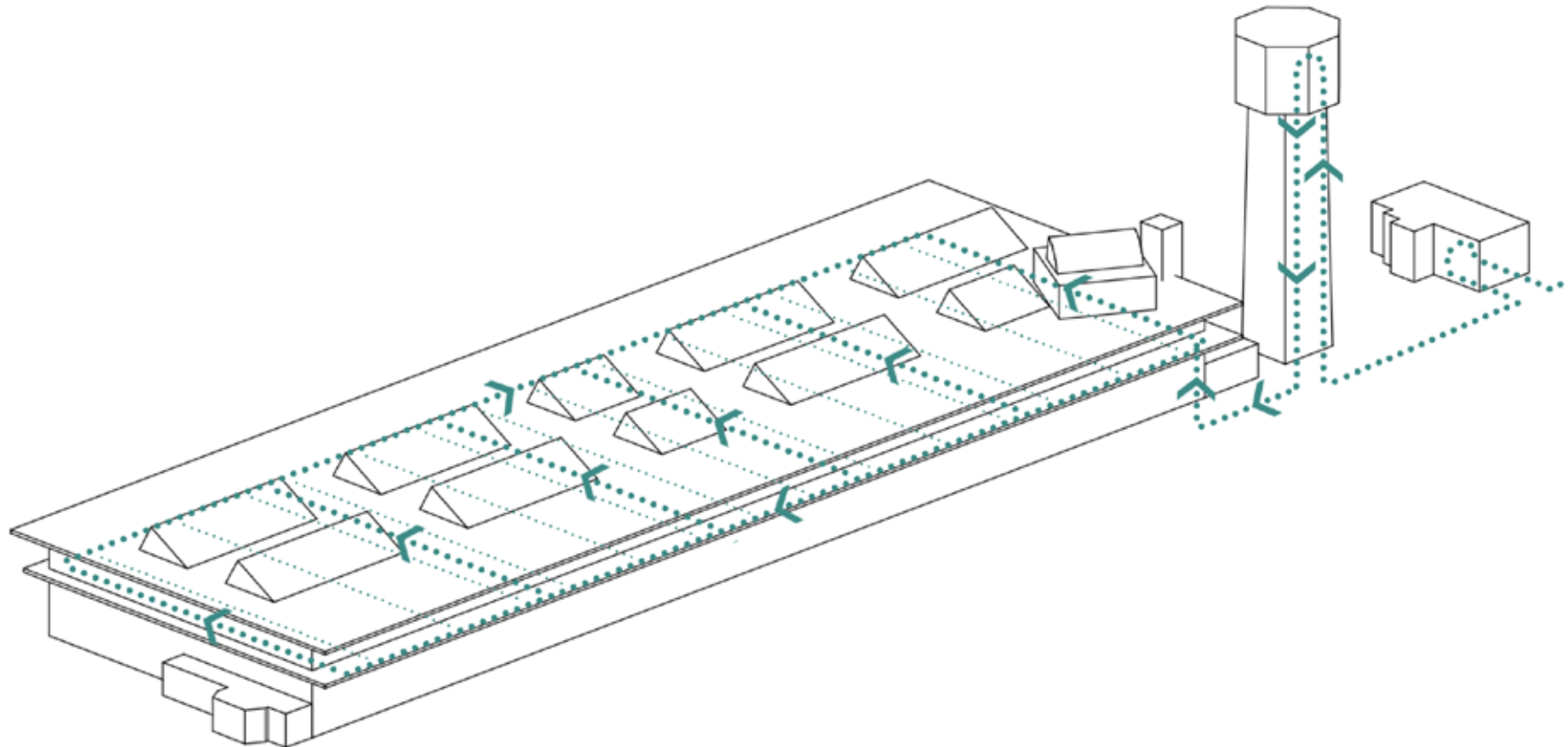
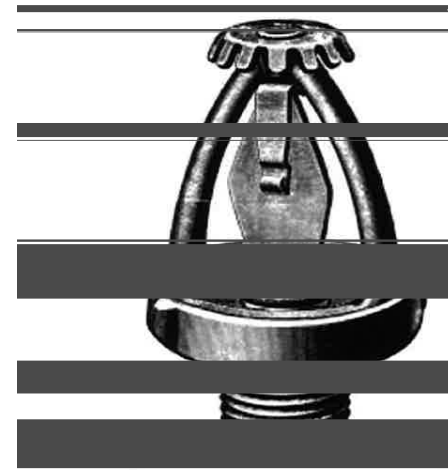


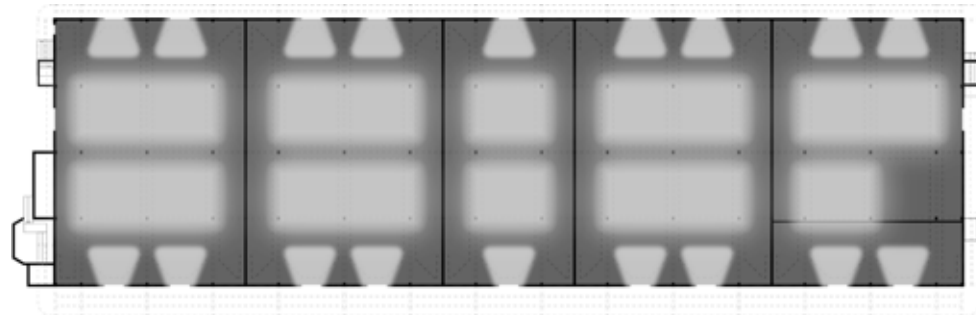
kraan en balkons
14/68





compartmentering
16/68

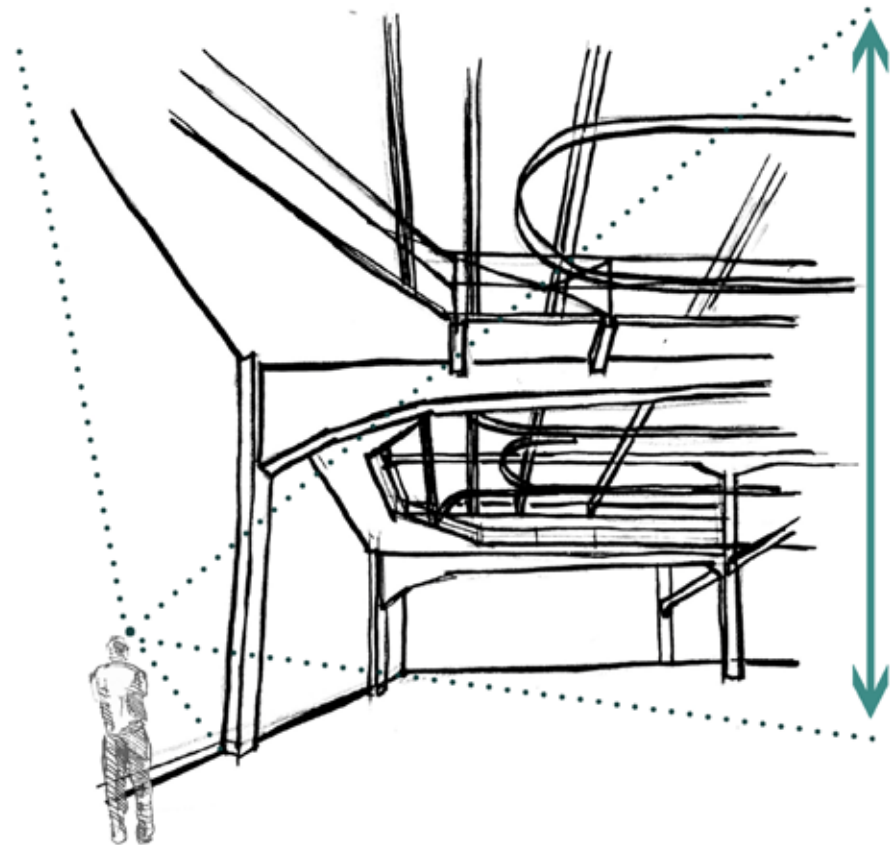
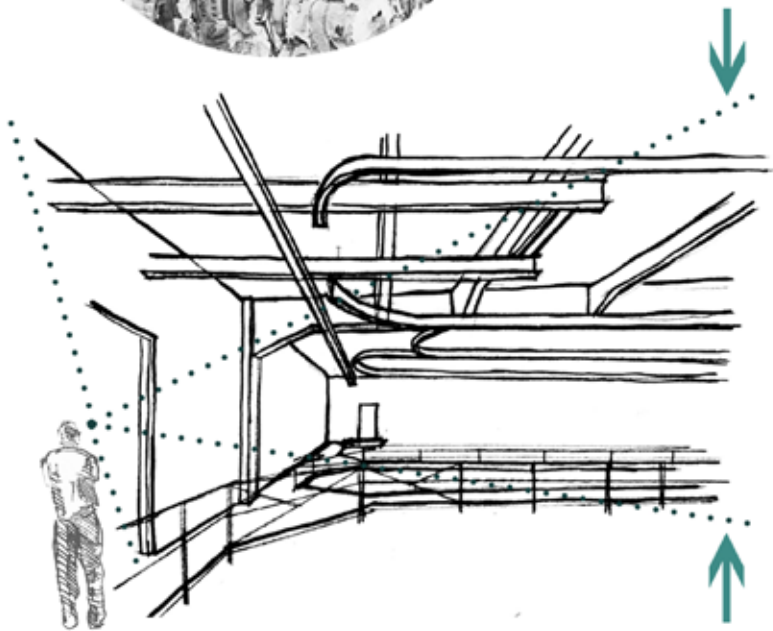




daglicht
18/68

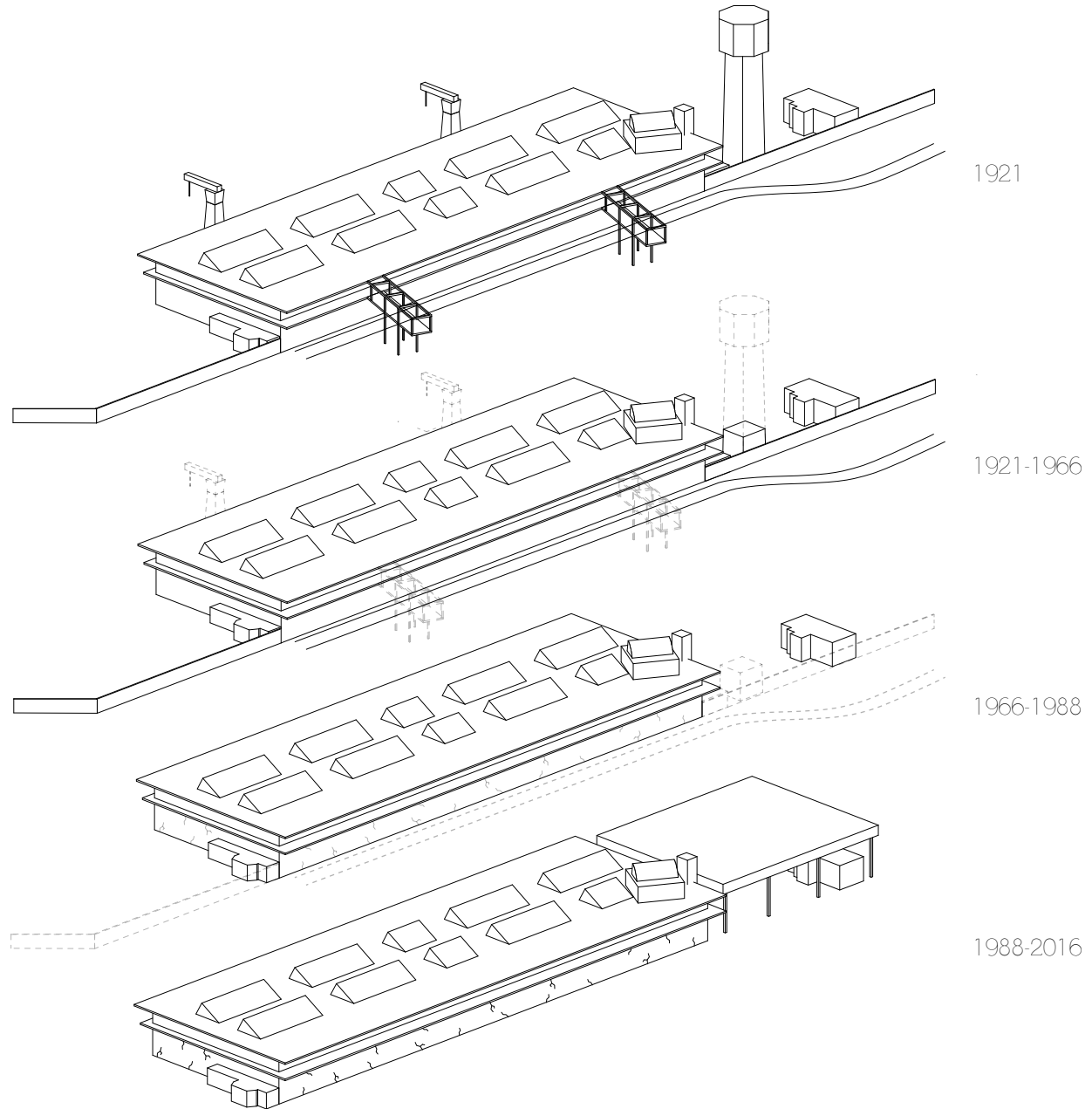


verleden vs. heden

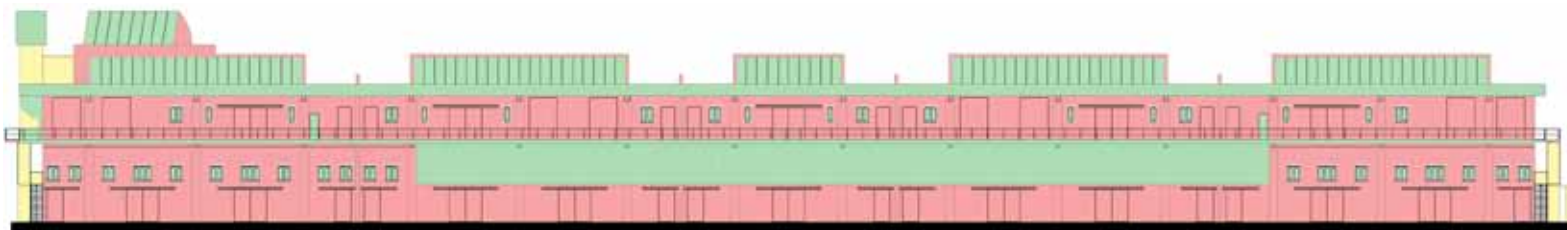
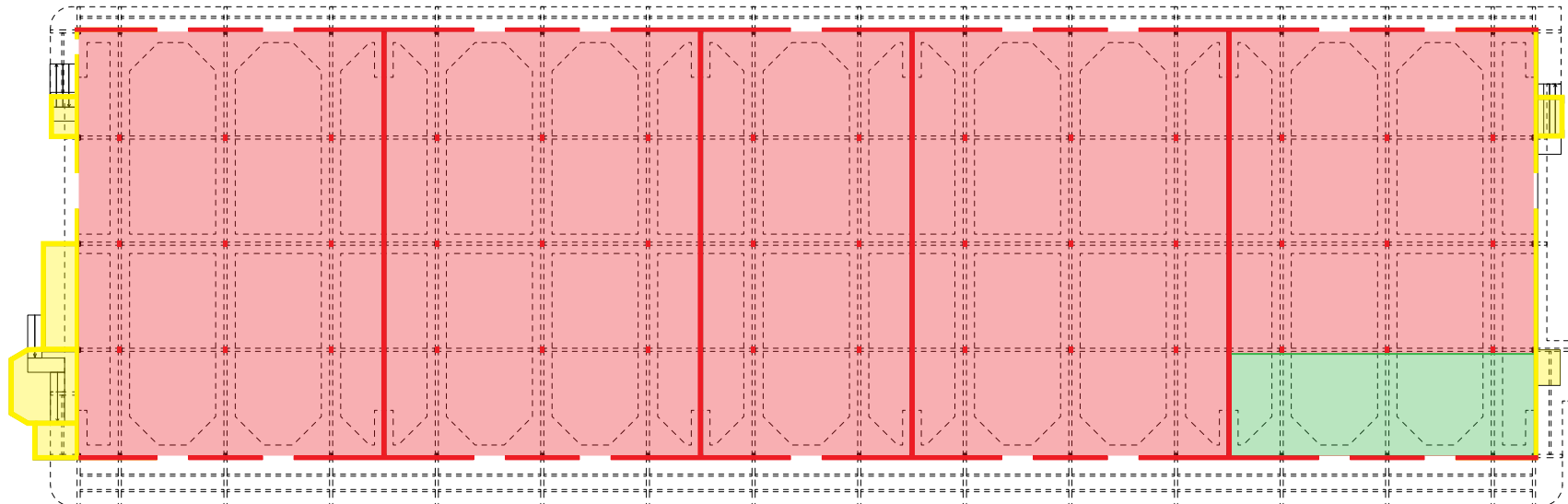


schaal & hoogte
19/68





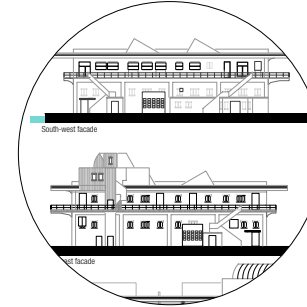




behoud is essentieel



belangrijk,
veranderingen mogelijk

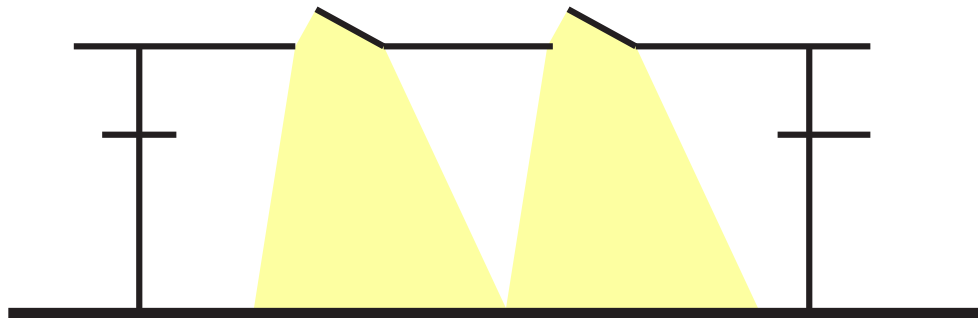
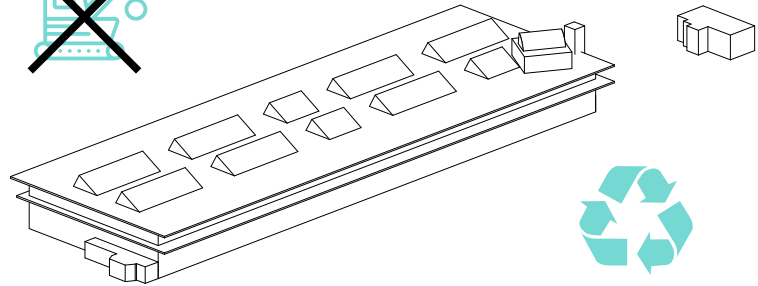
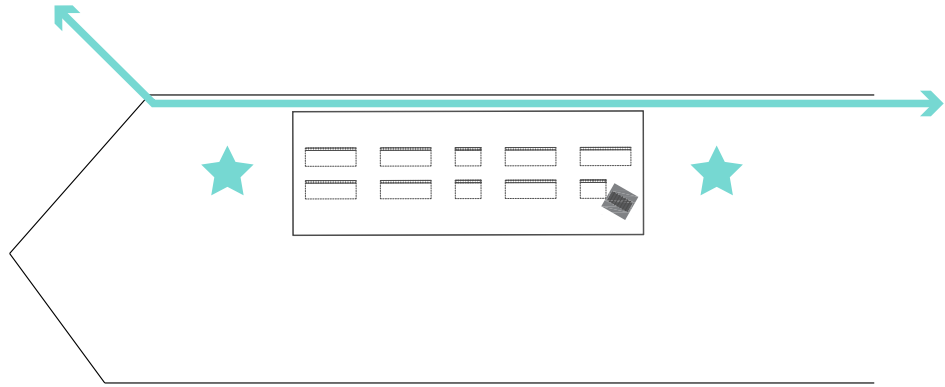


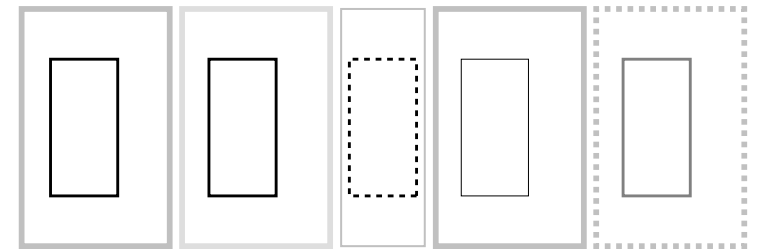
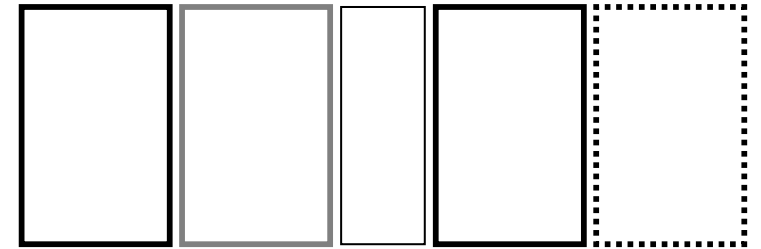
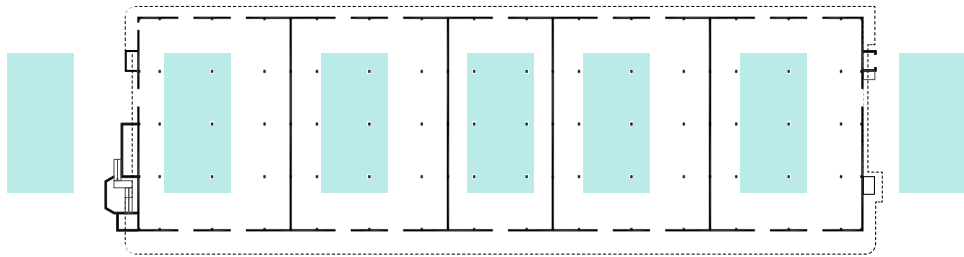
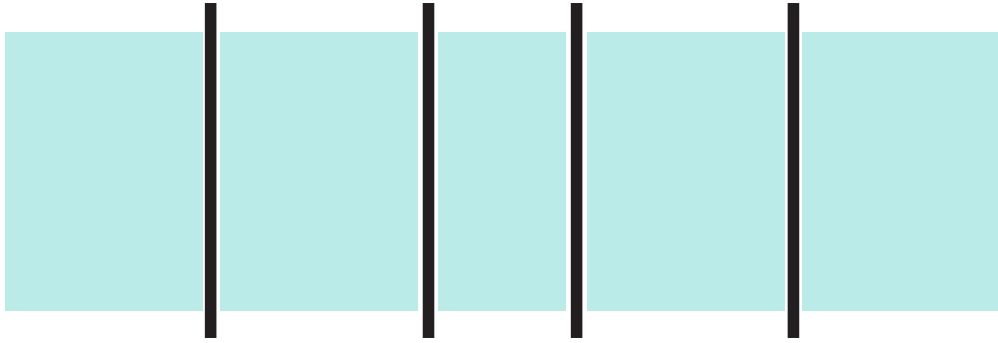
- 
- SPECIAAL GEBOUWD VOOR **ÉÉN FUNCTIE**
 - **INNOVATIEF** GEBOUW
 - VEEL **ONDERDELEN** VAN HET ENSEMBLE ZIJN **GESLOOPT**
 - **RELATIE MET OMGEVING** IS VERLOREN GEGAAN
 - **TECHNISCHE STAAT** VAN HET GEBOUW IS MATIG

HOE KAN EEN **NIEUW ONTWERP** GEMAAKT WORDEN VOOR EEN GEBOUW DAT OORSPRONKELIJK GEBOUWD IS VOOR **ÉÉN SPECIFIEKE FUNCTIE**, ZONDER DAT DE **KARAKTERISTIEKE ELEMENTEN** VERLOREN GAAN?

HET BESTAANDE GEBOUW EN ALLE DAARBIJ BEHORENDE ONDERDELEN ZOVEEL ALS MOGELIJK **BEHOUDEN**, HET ACCEPTEREN VAN DE HUIDIGE **TECHNISCHE CONDITIE** VAN HET GEBOUW EN HET VIEREN VAN DE **KWALITEITEN EN KARAKTERISTIEKE ELEMENTEN** VAN HET KATOENVEEM

HET BESTAANDE ENSEMBLE LAAT DE **AANPASSINGEN ALS LAGEN DOOR DE TIJD HEEN** ZIEN. DEZE AANPASSINGEN ZIJN GEDAAN IN HET KADER VAN DE **VERANDERENDE FUNCTIONALITEIT** VAN HET KATOENVEEM. MIJN ONTWERP KAN WORDEN GEZIEEN ALS EEN **NIEUWE LAAG** DIE WORDT TOEGEVOEGD, VOOR WEER EEN **NIEUWE FUNCTIE**.

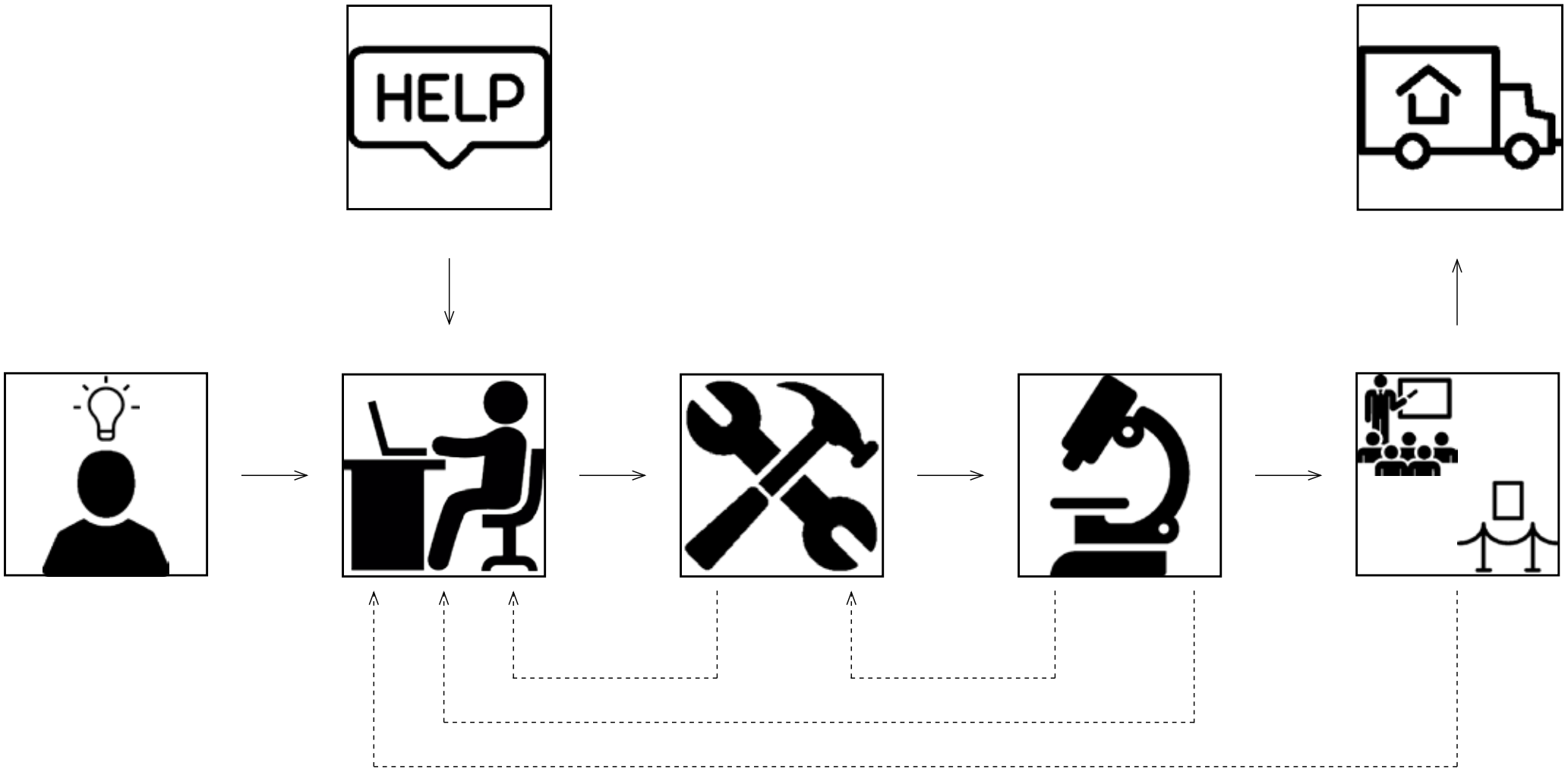




INNOVATIECENTRUM VOOR TEXTIELPRODUCTEN VOOR DE MARITIEME SECTOR

HET BIEDEN VAN EEN PLATFORM AAN MENSEN MET EEN INNOVATIEF IDEE, EN HET HELPEN OPZETTEN VAN EEN EIGEN BEDRIJF OM DIT PRODUCT OP DE MARKT TE KRIJGEN





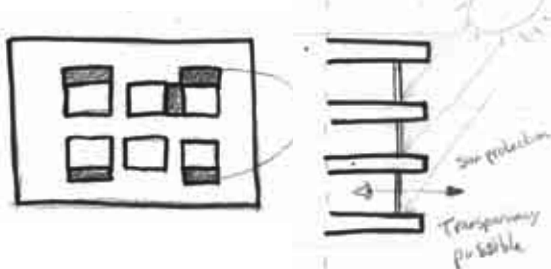
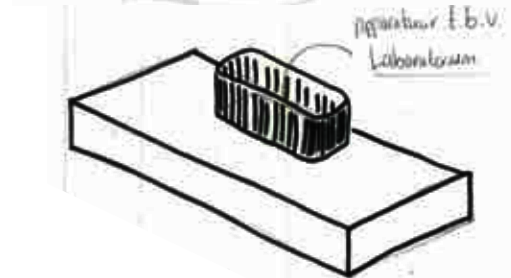
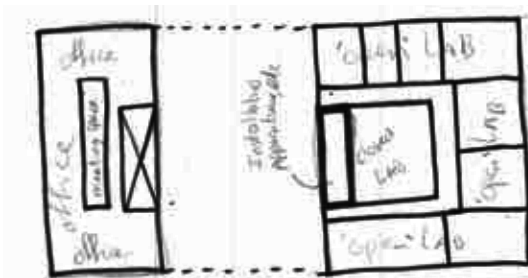
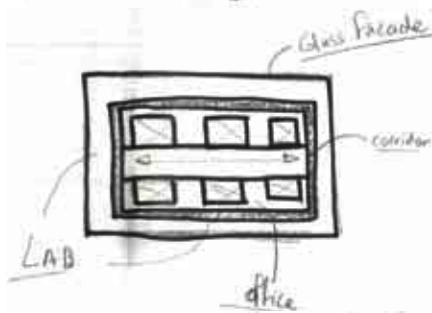
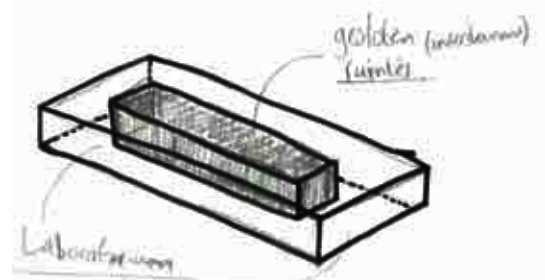
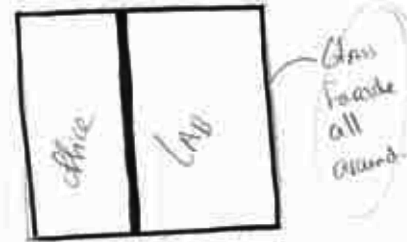
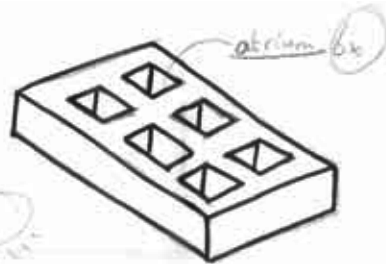
_NFI DEN HAAG

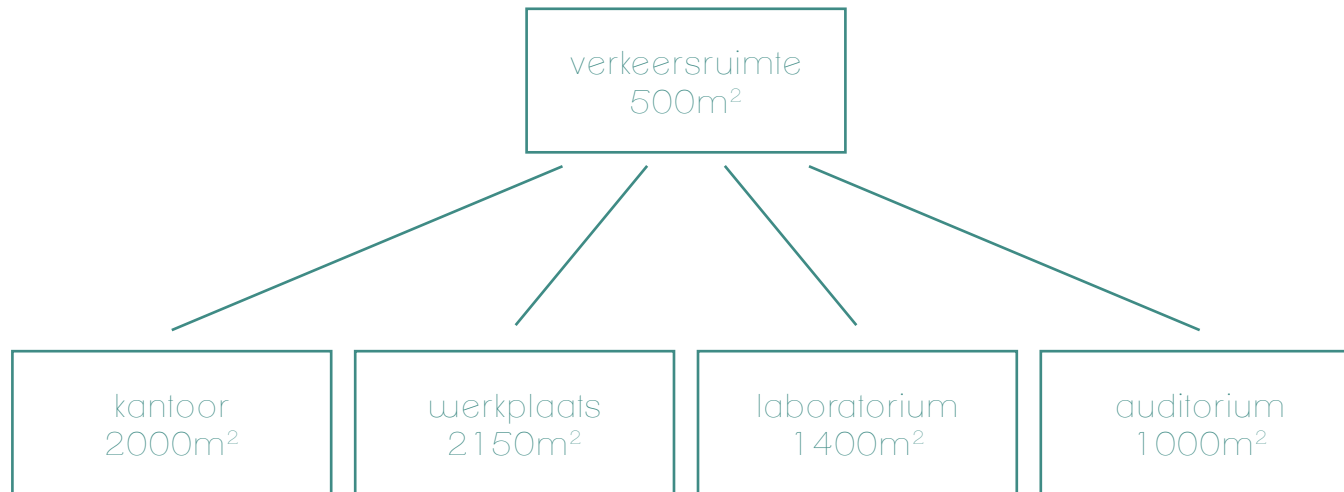


_DSM BIOTECH DELFT

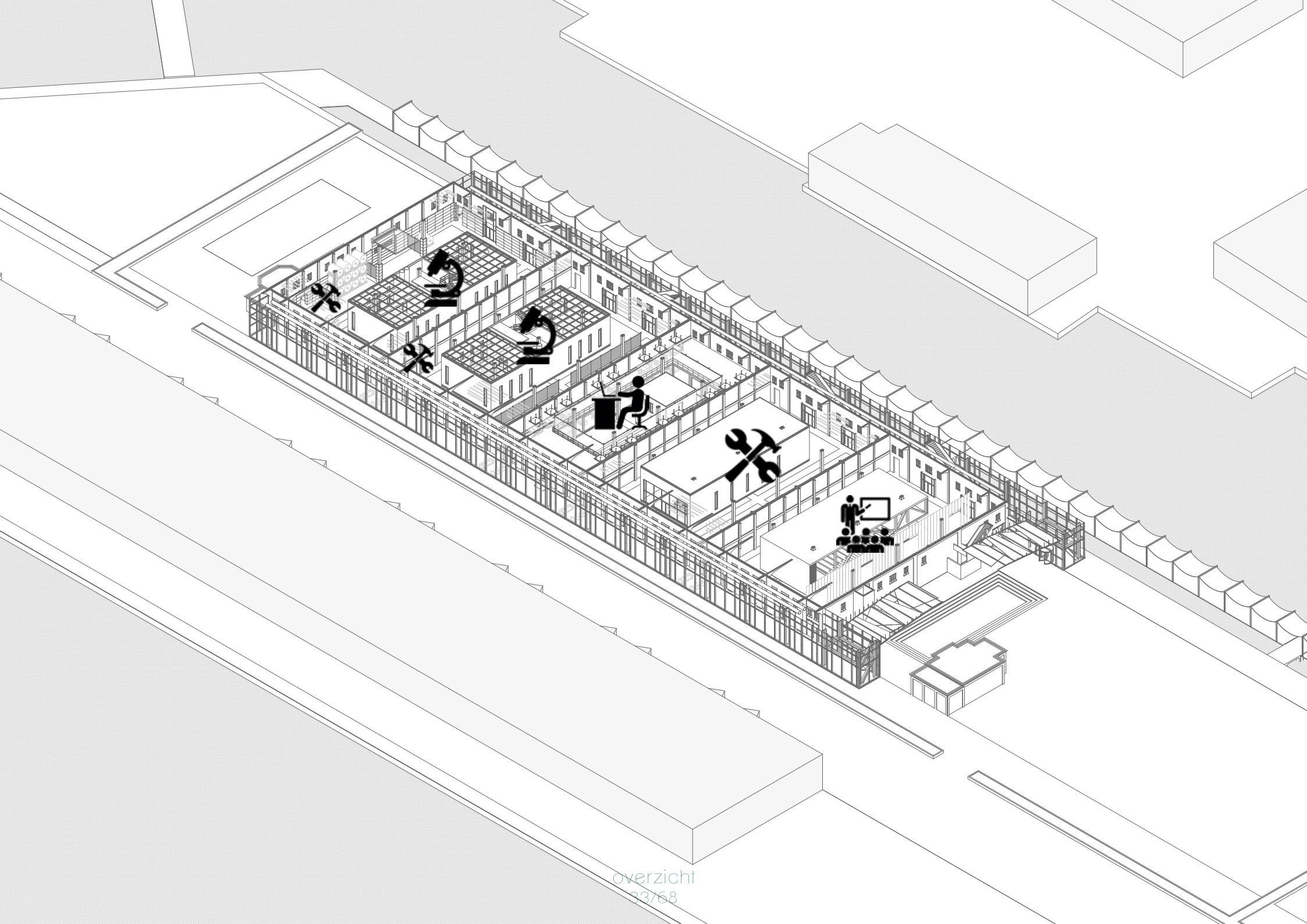


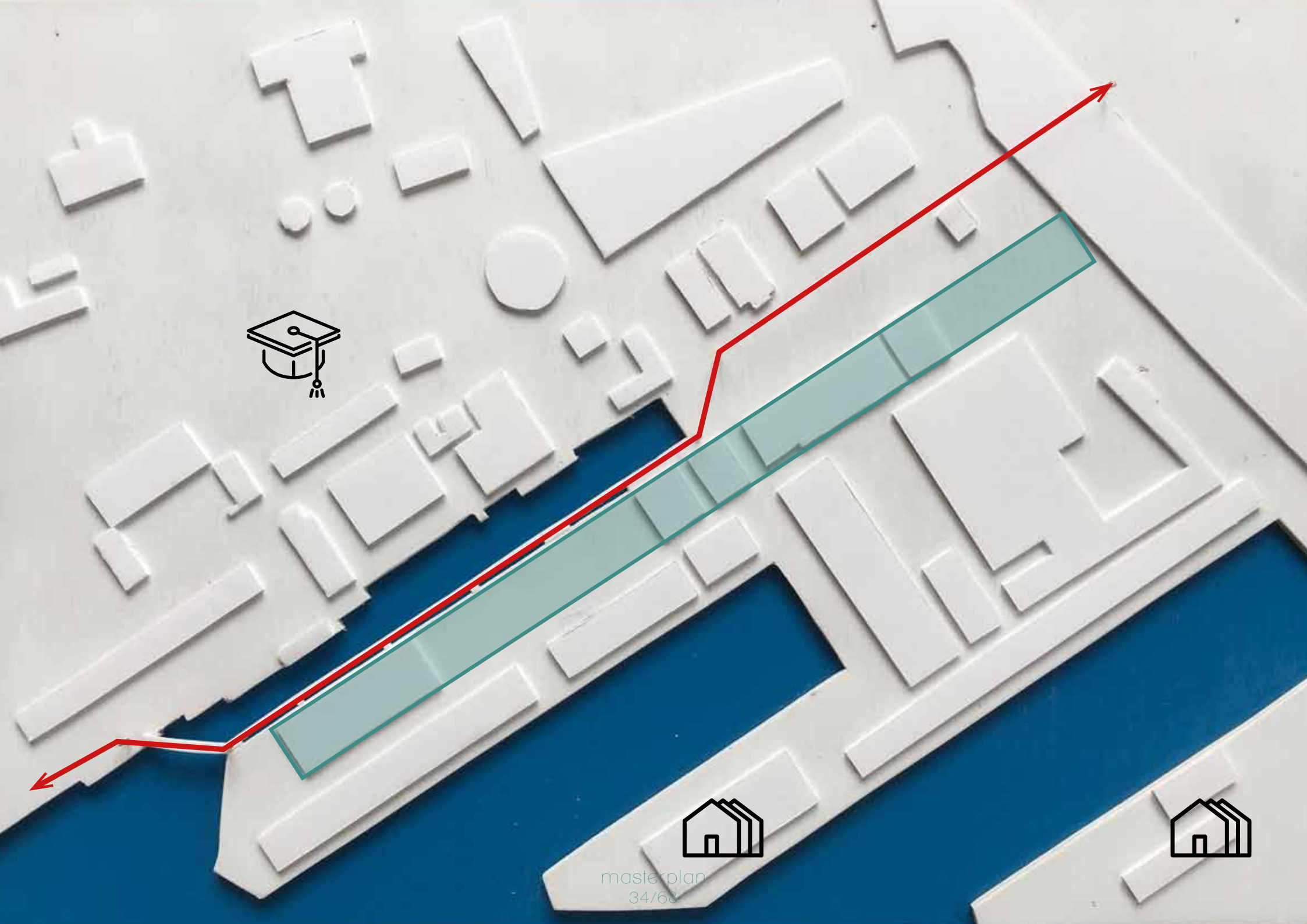
_NIOO_KNAW WAGENINGEN

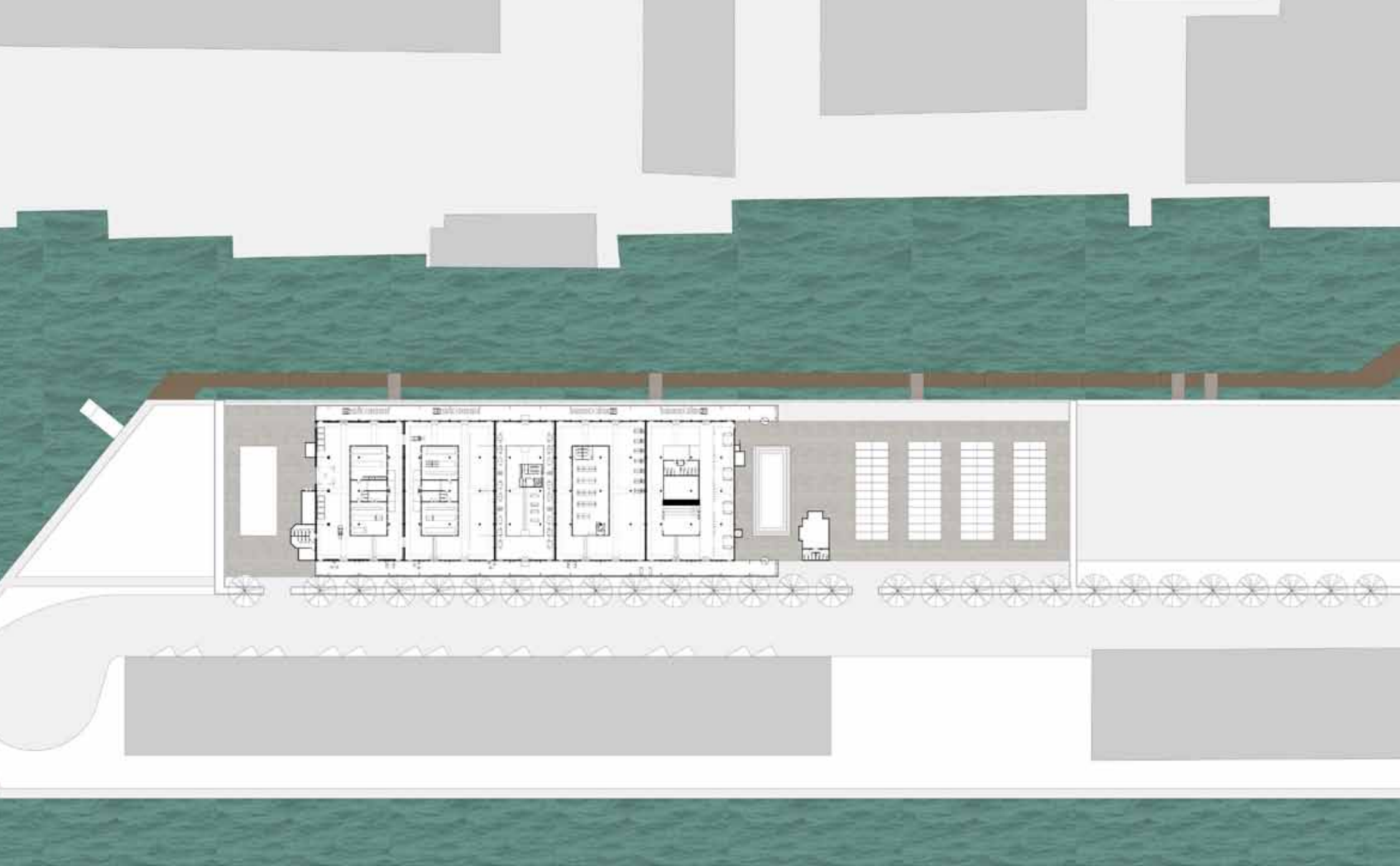


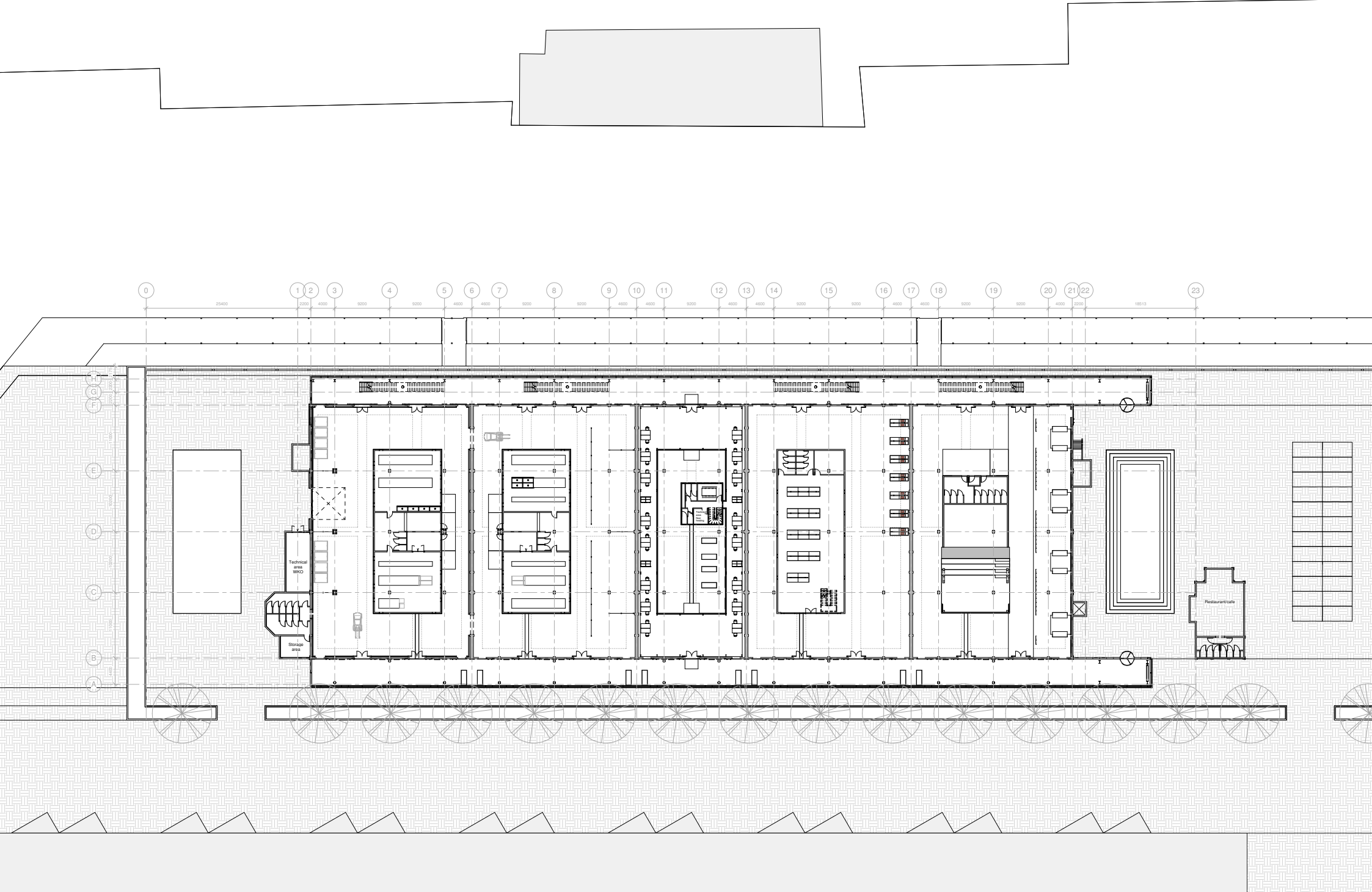


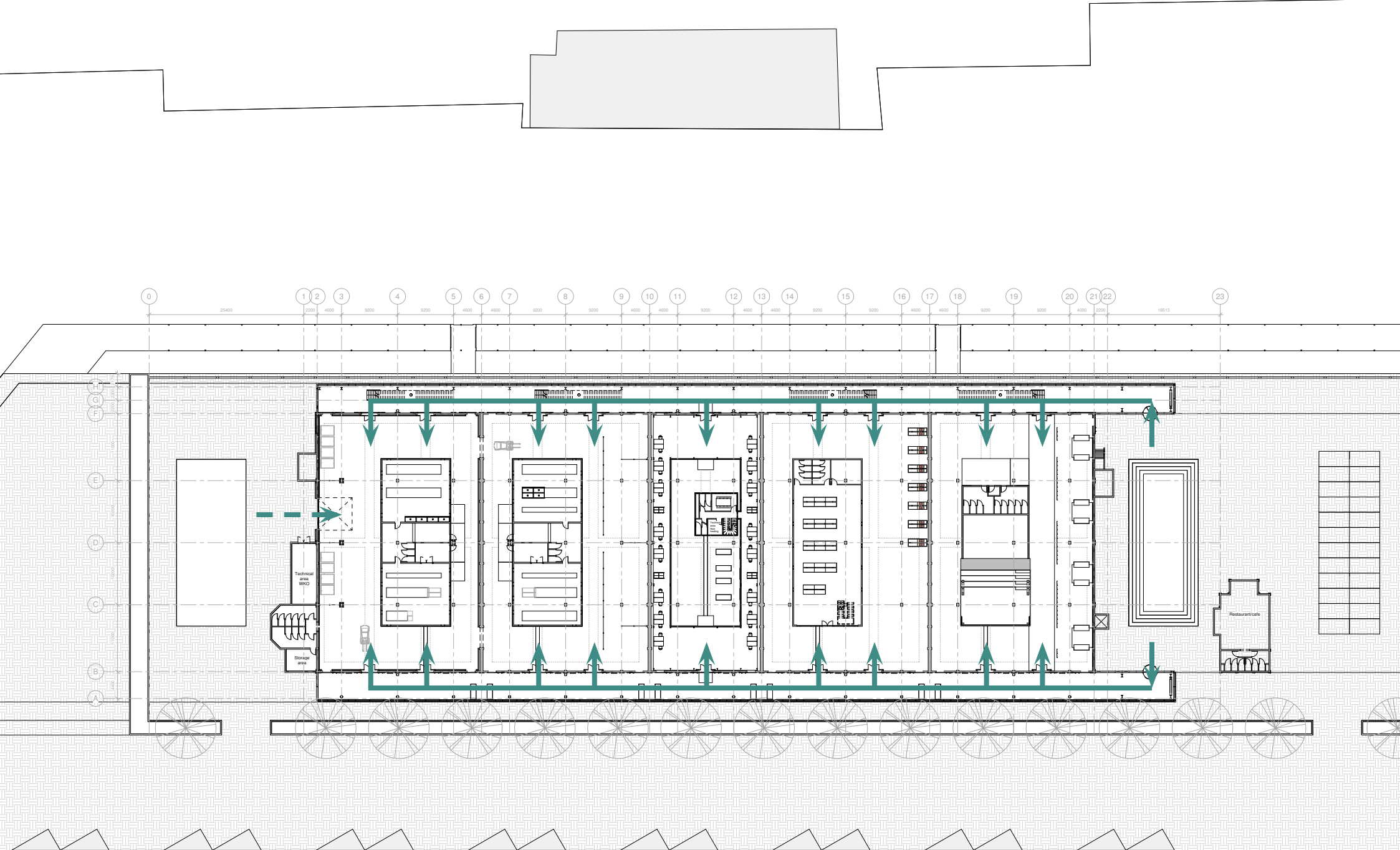
oud 5500m²
nieuw 7000m²

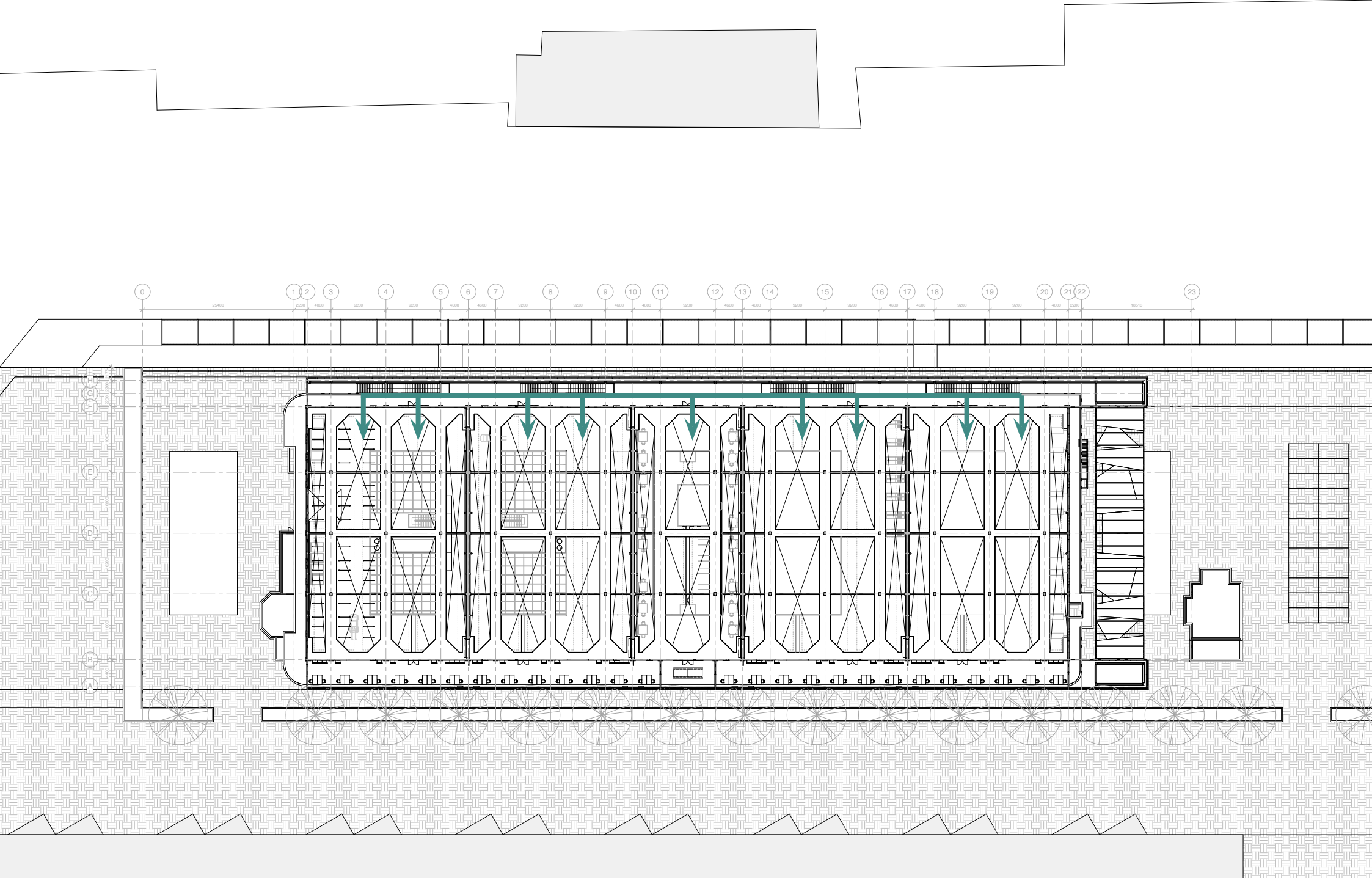


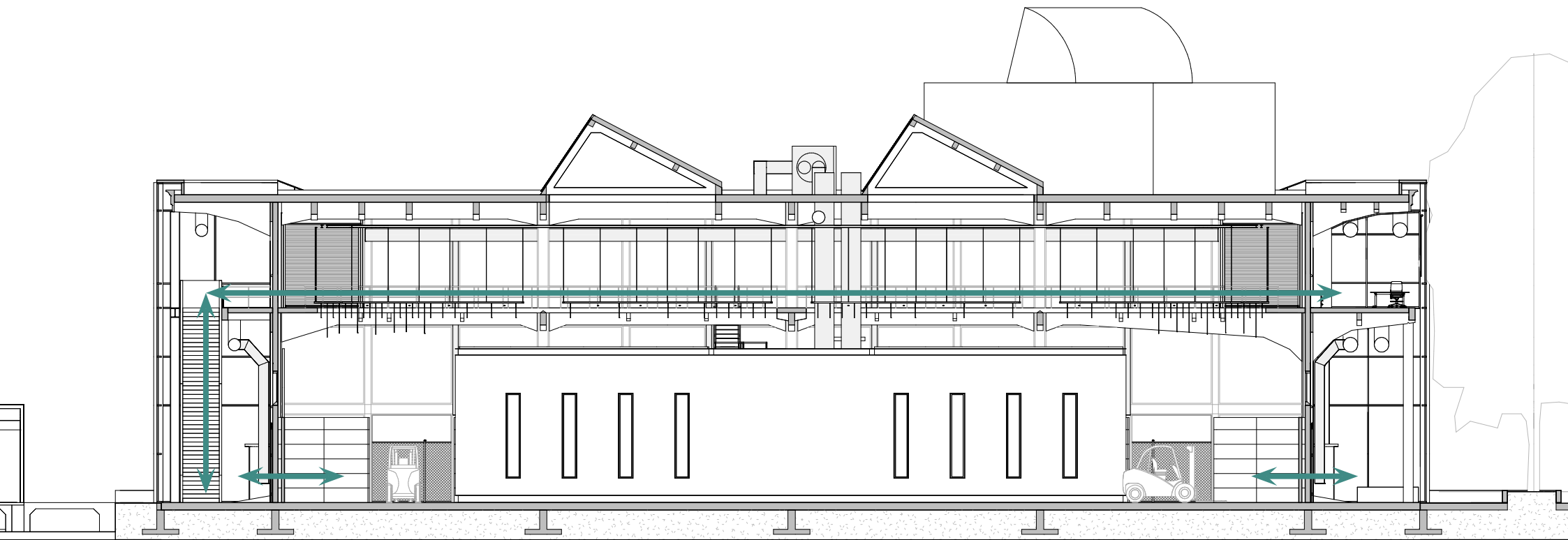












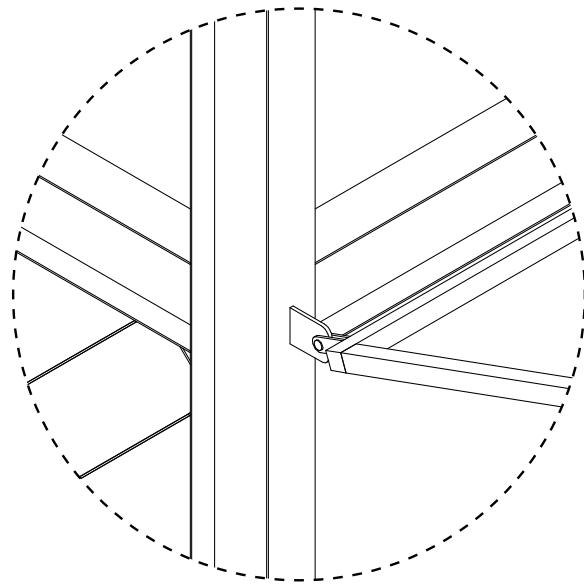
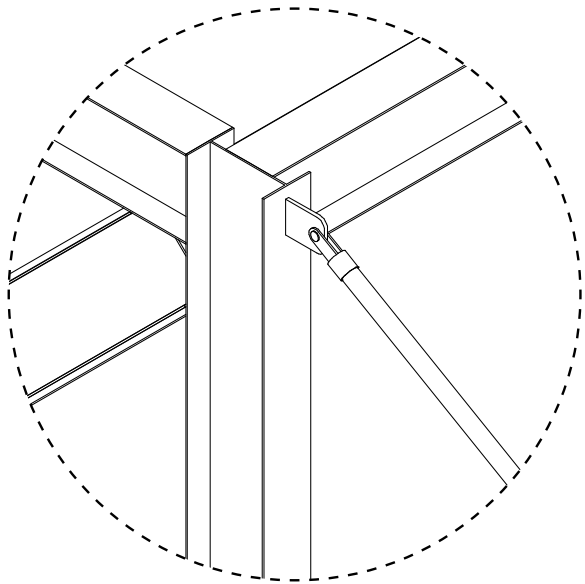
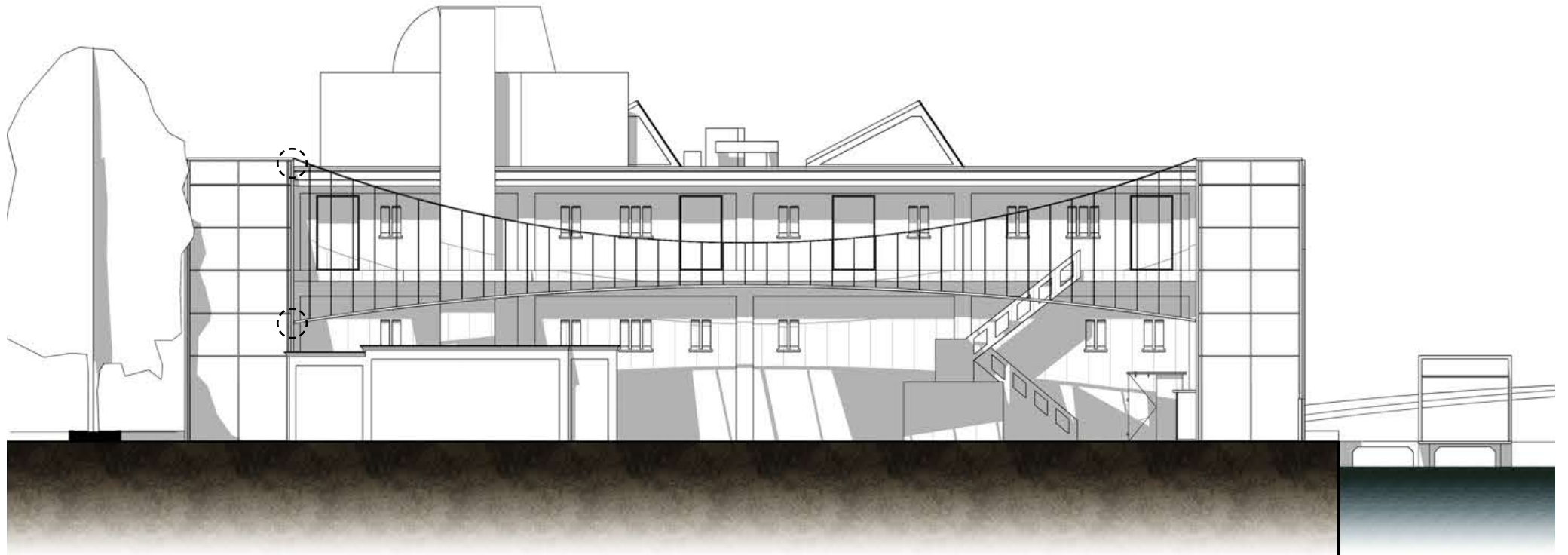


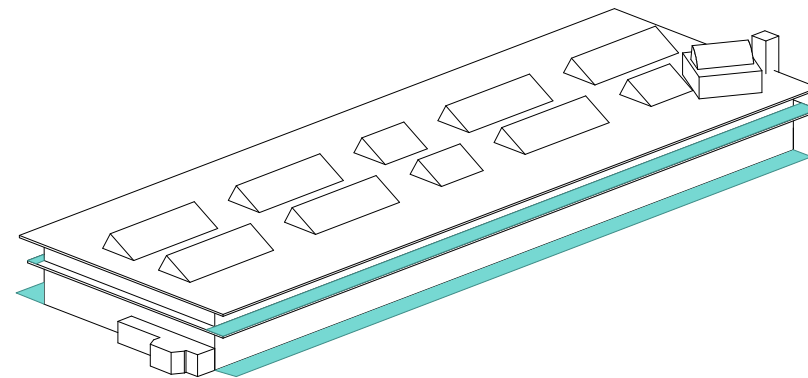
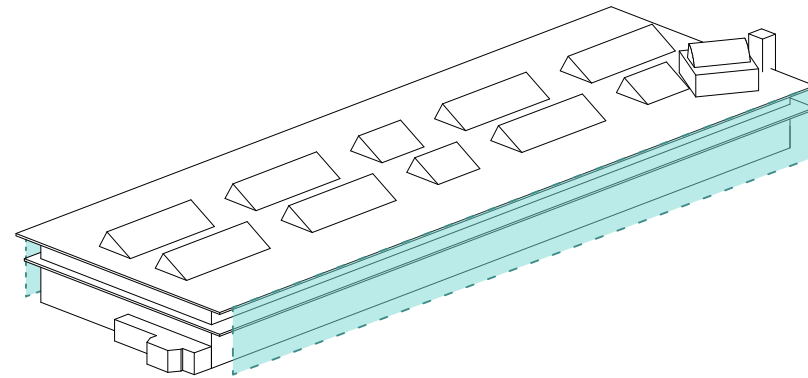
FUNCTIE VAN HET PLEIN

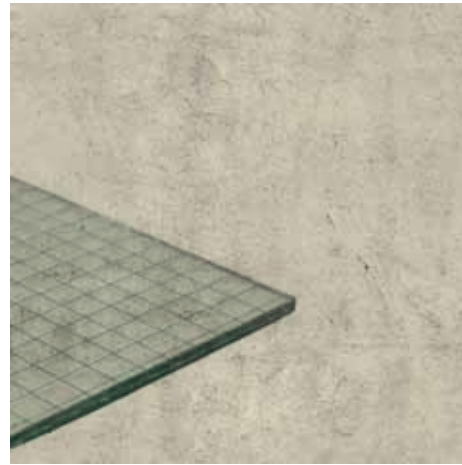
GEBRUIKERS

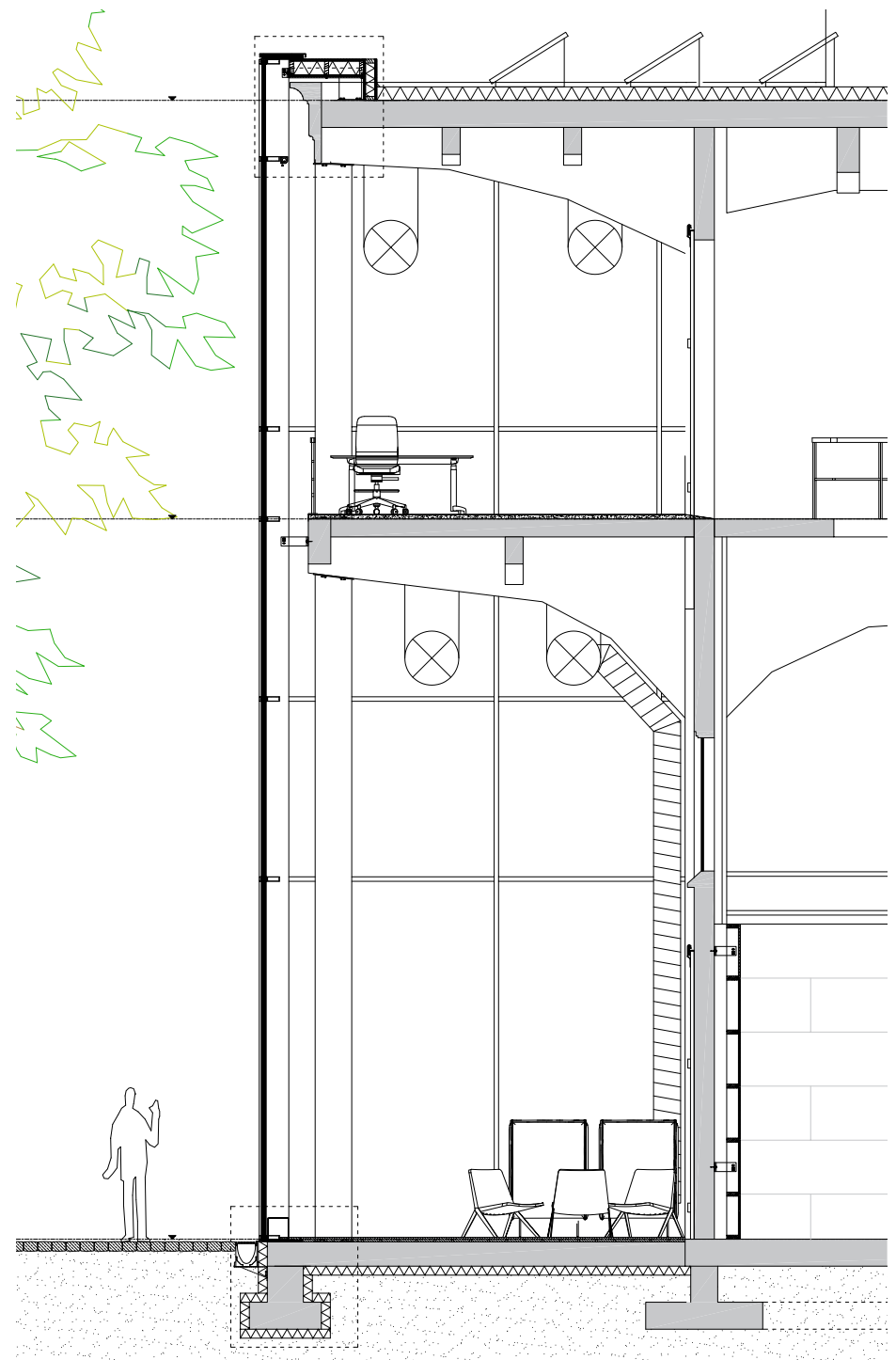
SCHAAL













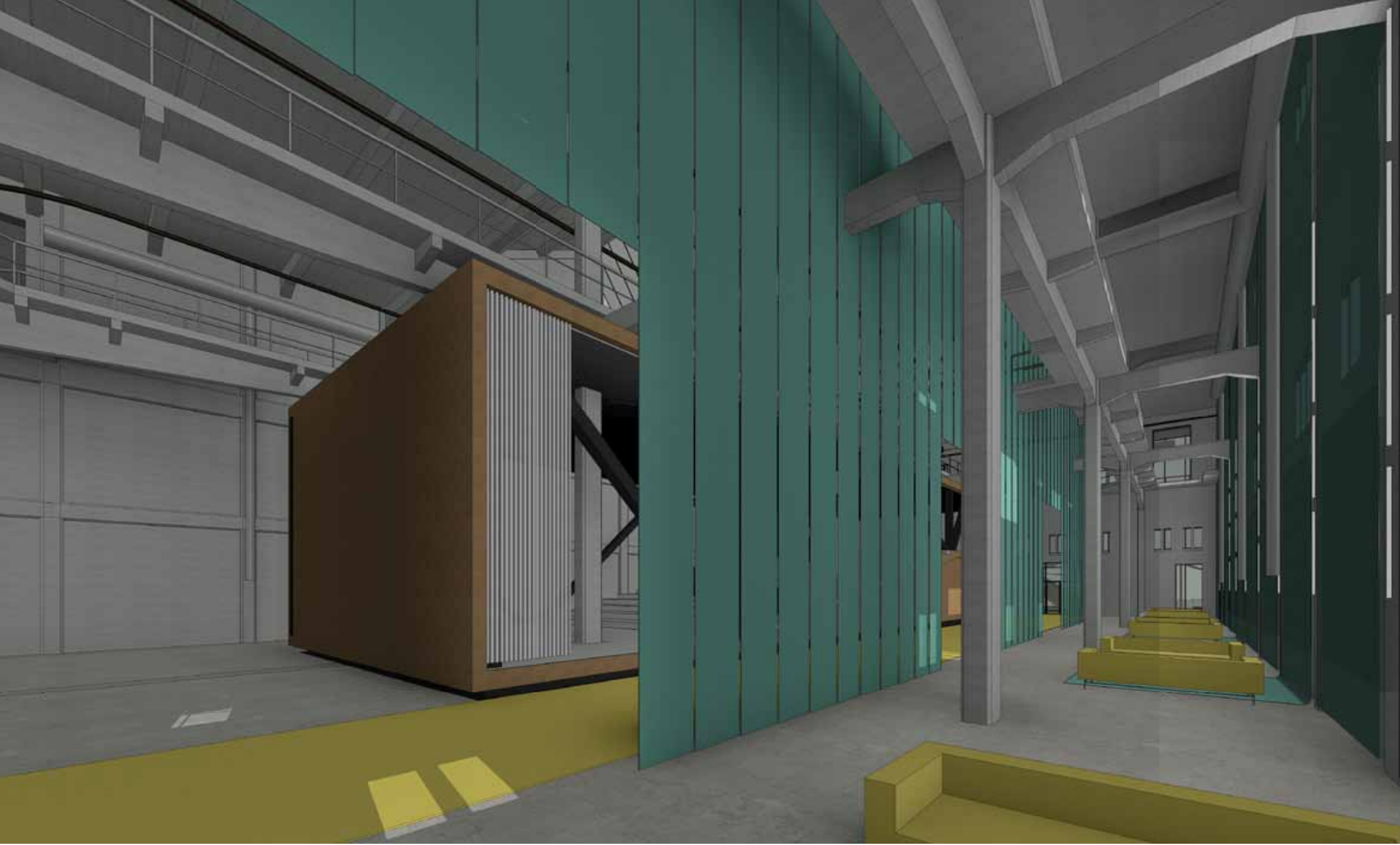
HOOGTE

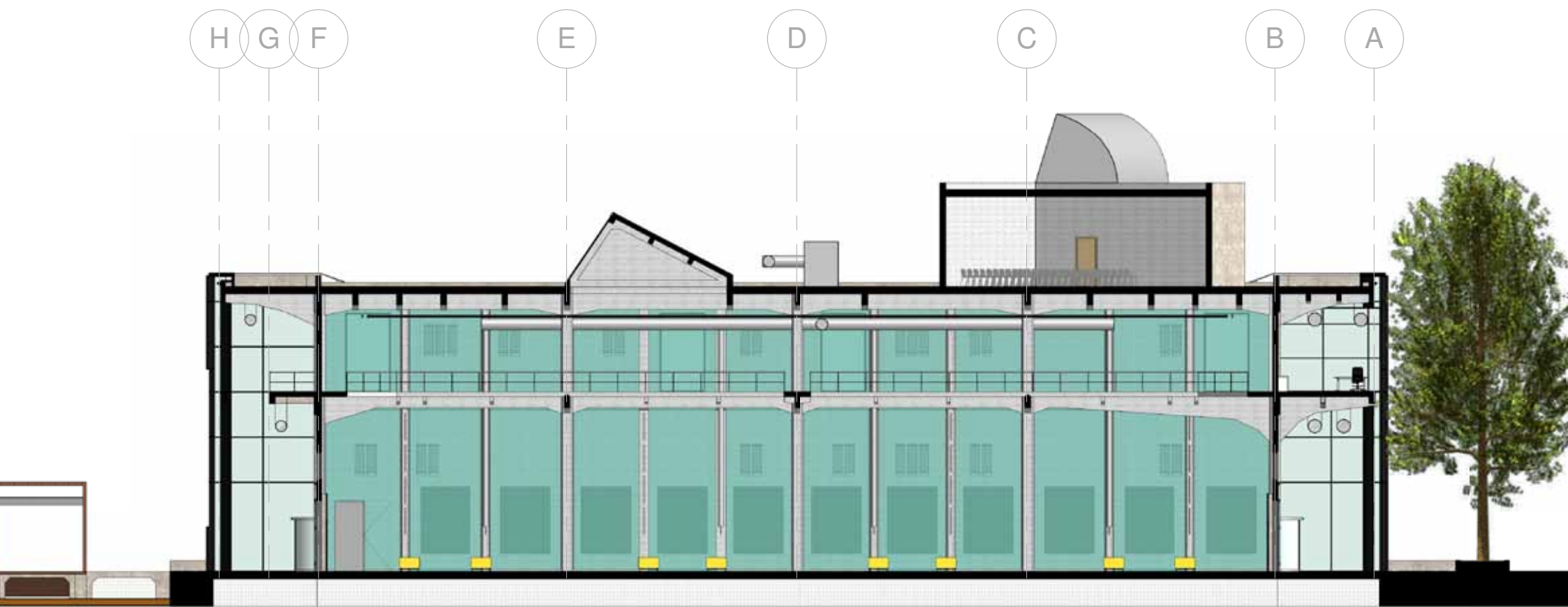
AKOESTIEK

VERSCHILLENDE GEBRUIKERS









auditorium
50/68



KLEINER

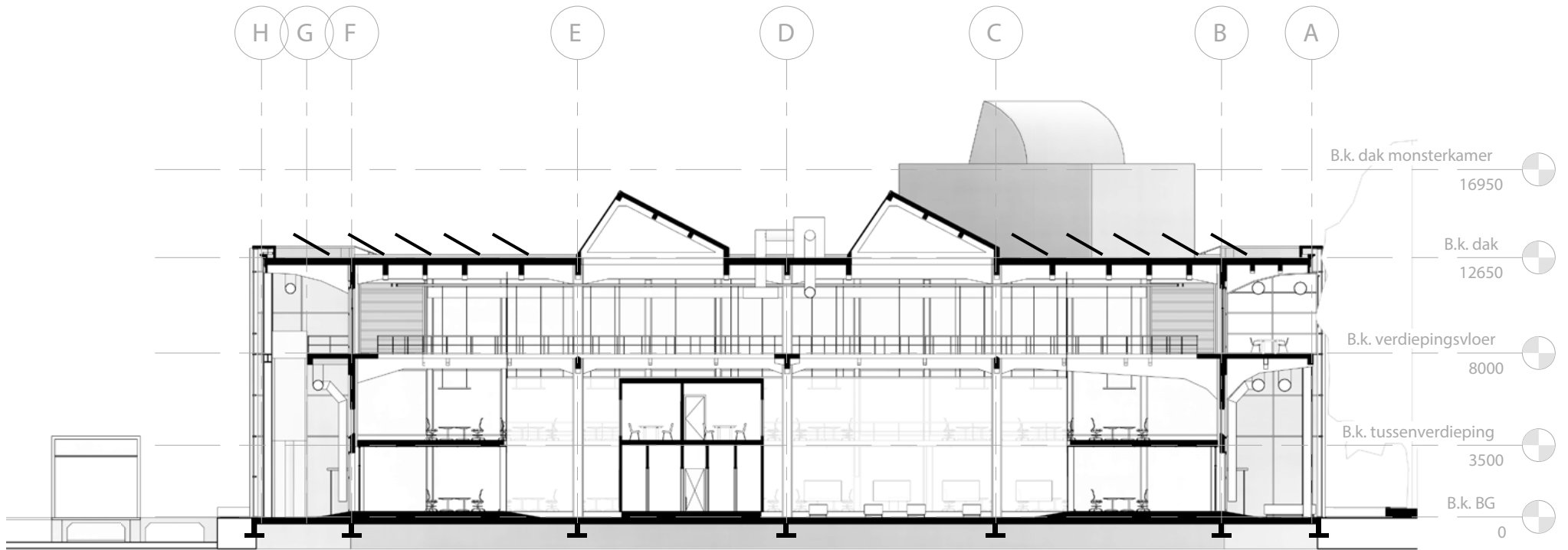
EXTRA VLOEROPPERVLAKTE

KANTOORFUNCTIE

compartiment C
51/68







kantoor doorsnede
54/68



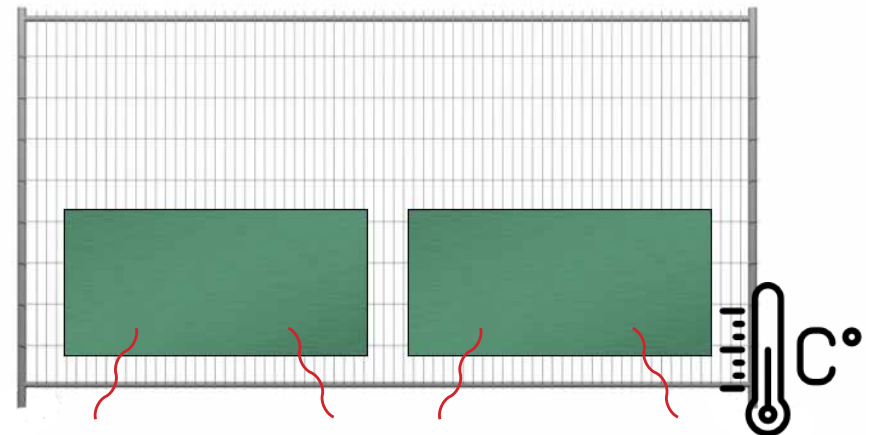
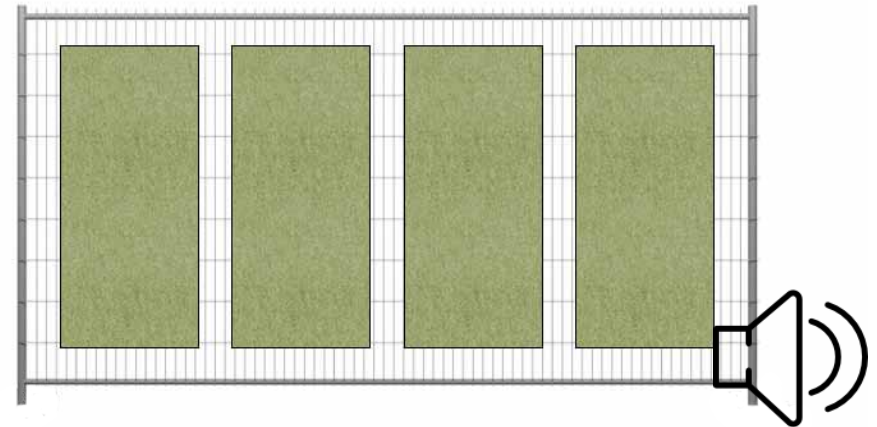
STRENGE EISEN

CONSTRUCTIE VOLUMES

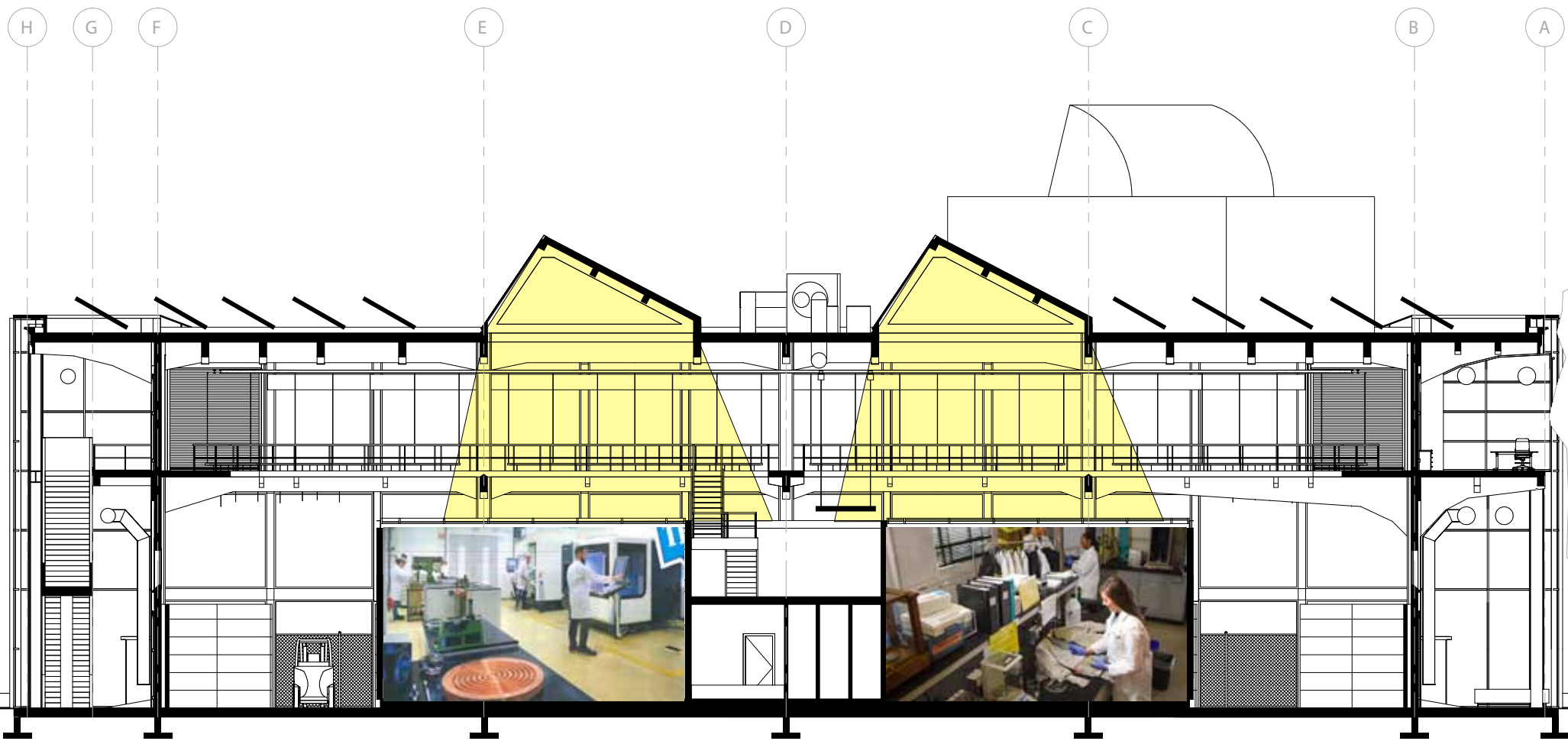
DAGLICHT

compartiment D+E
55/68

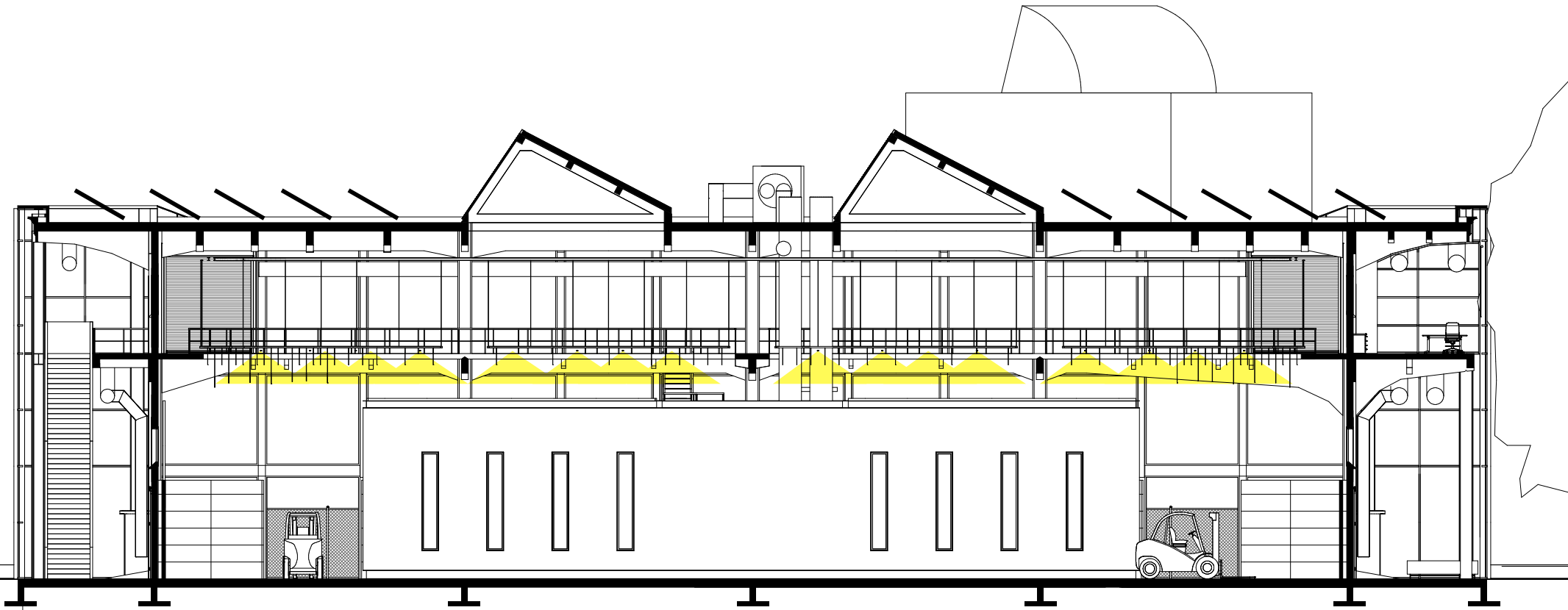




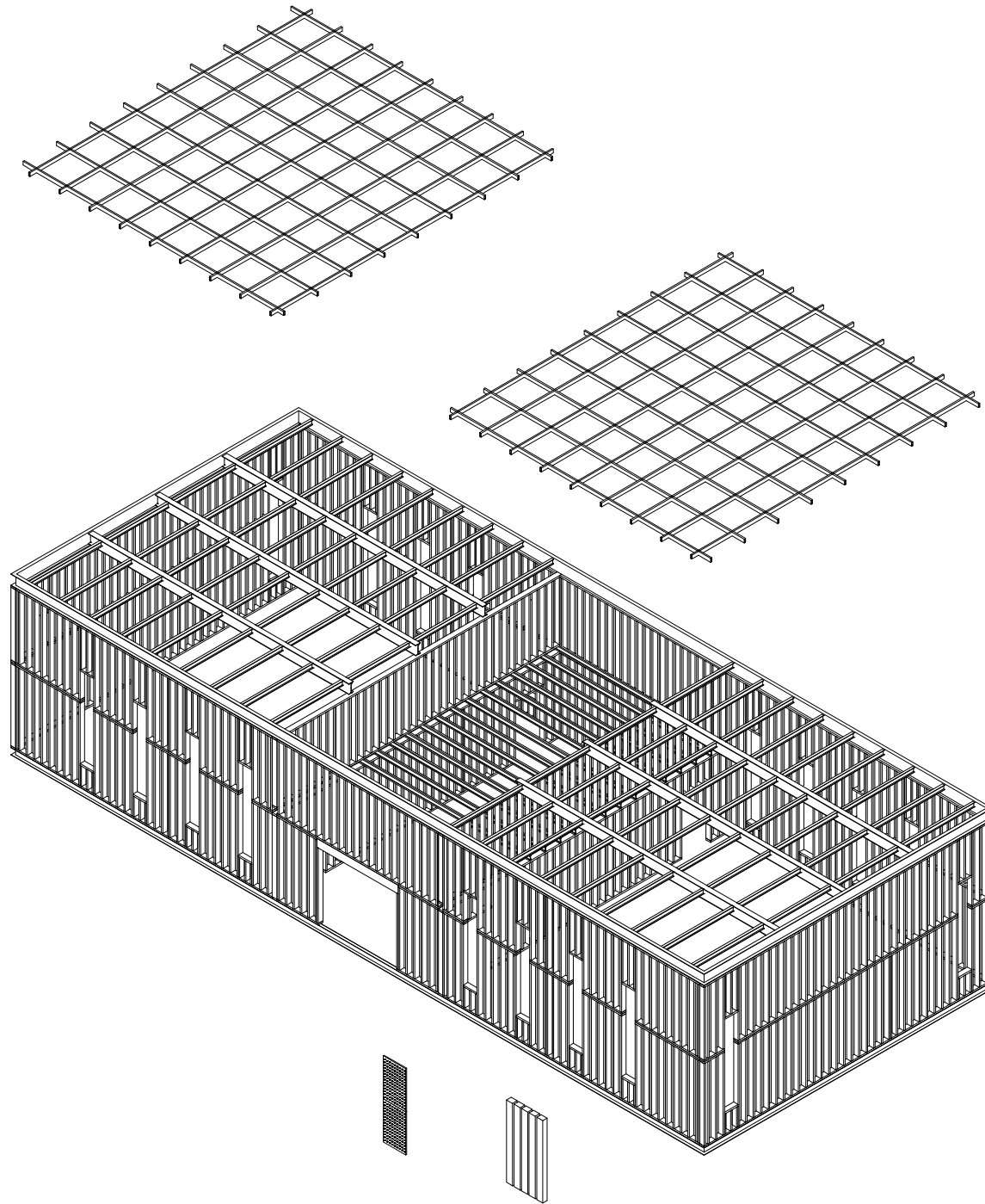




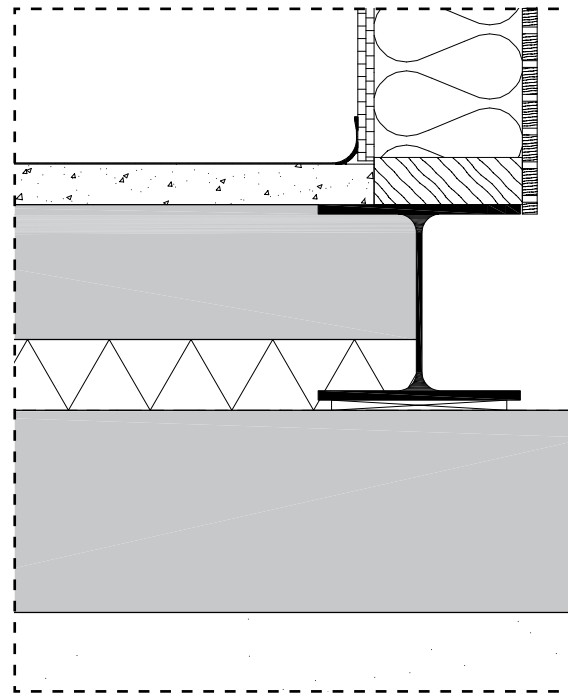
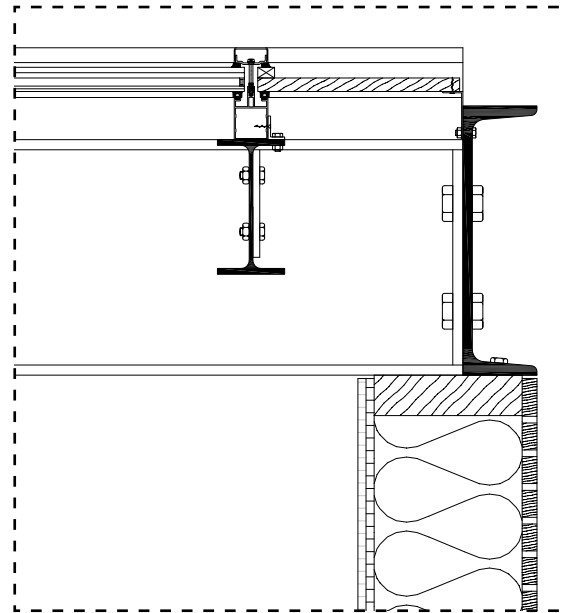
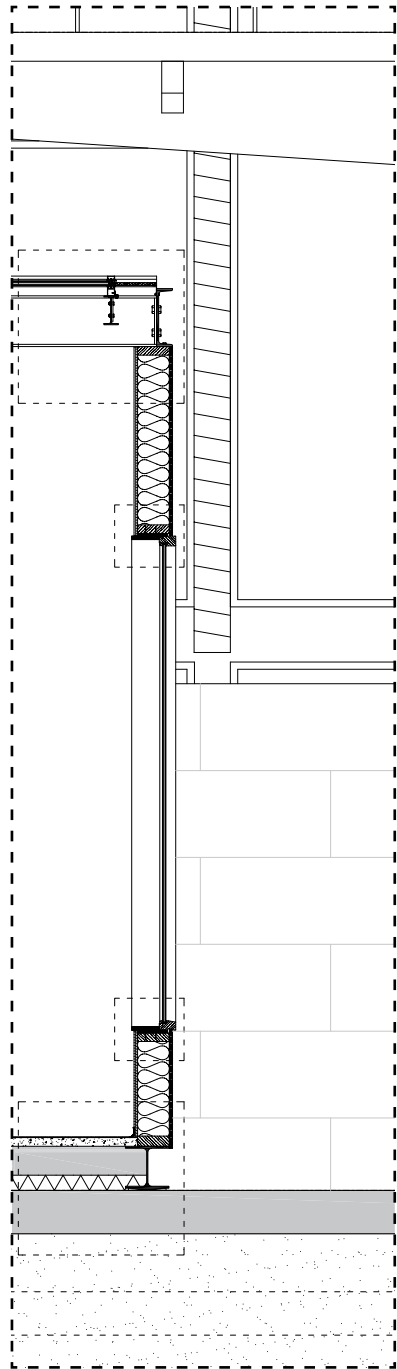
LAB doorsnede
59/68

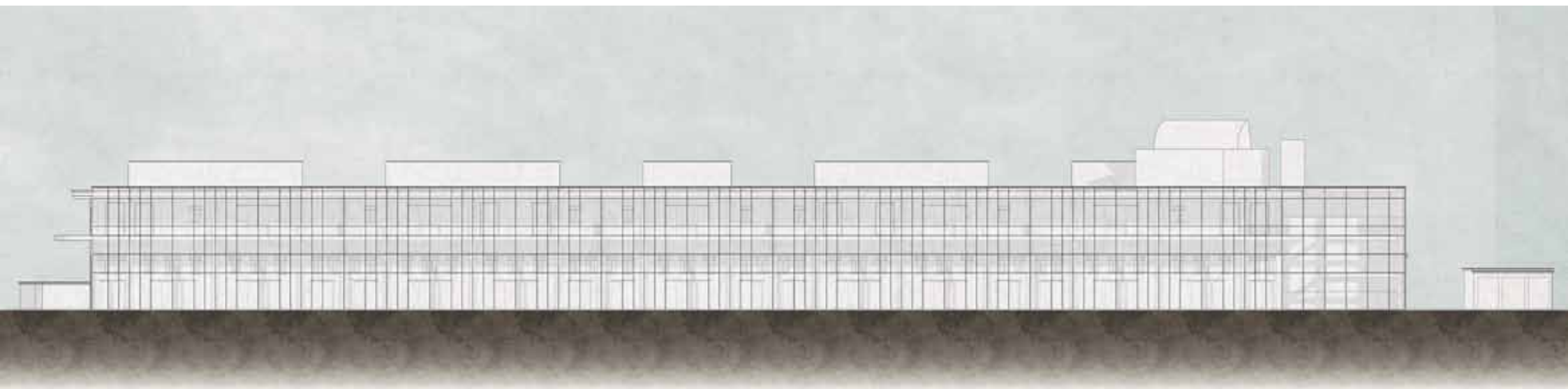


LAB doorsnede
60/68



constructie volume
61/68





zuidoost gevel
63/68

