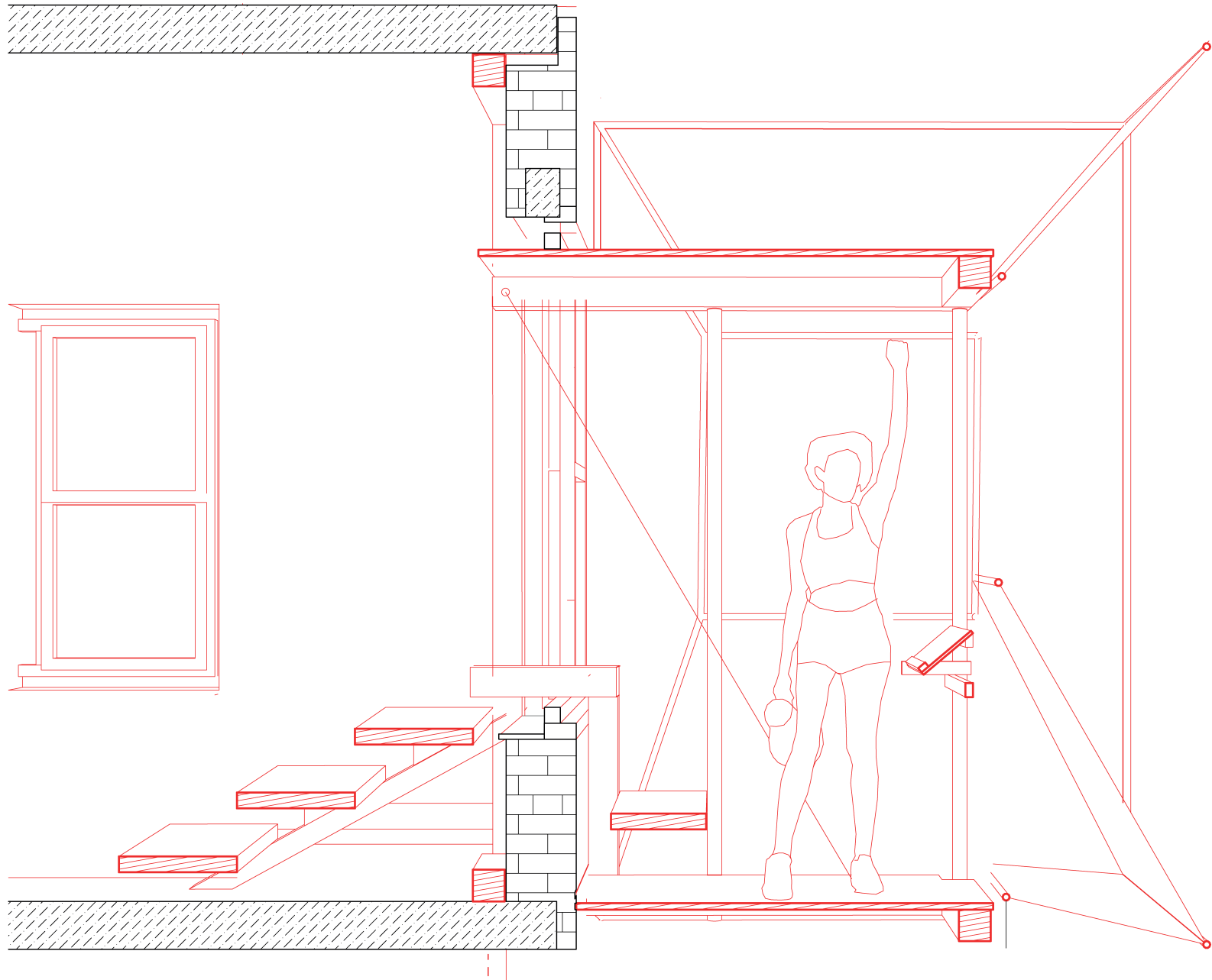


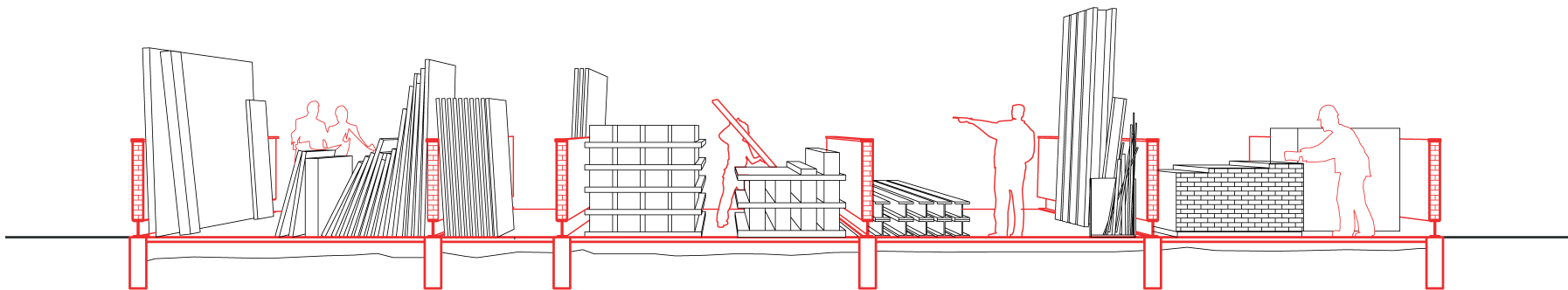
Perspective Section  
1:100

*The Inhabitation*



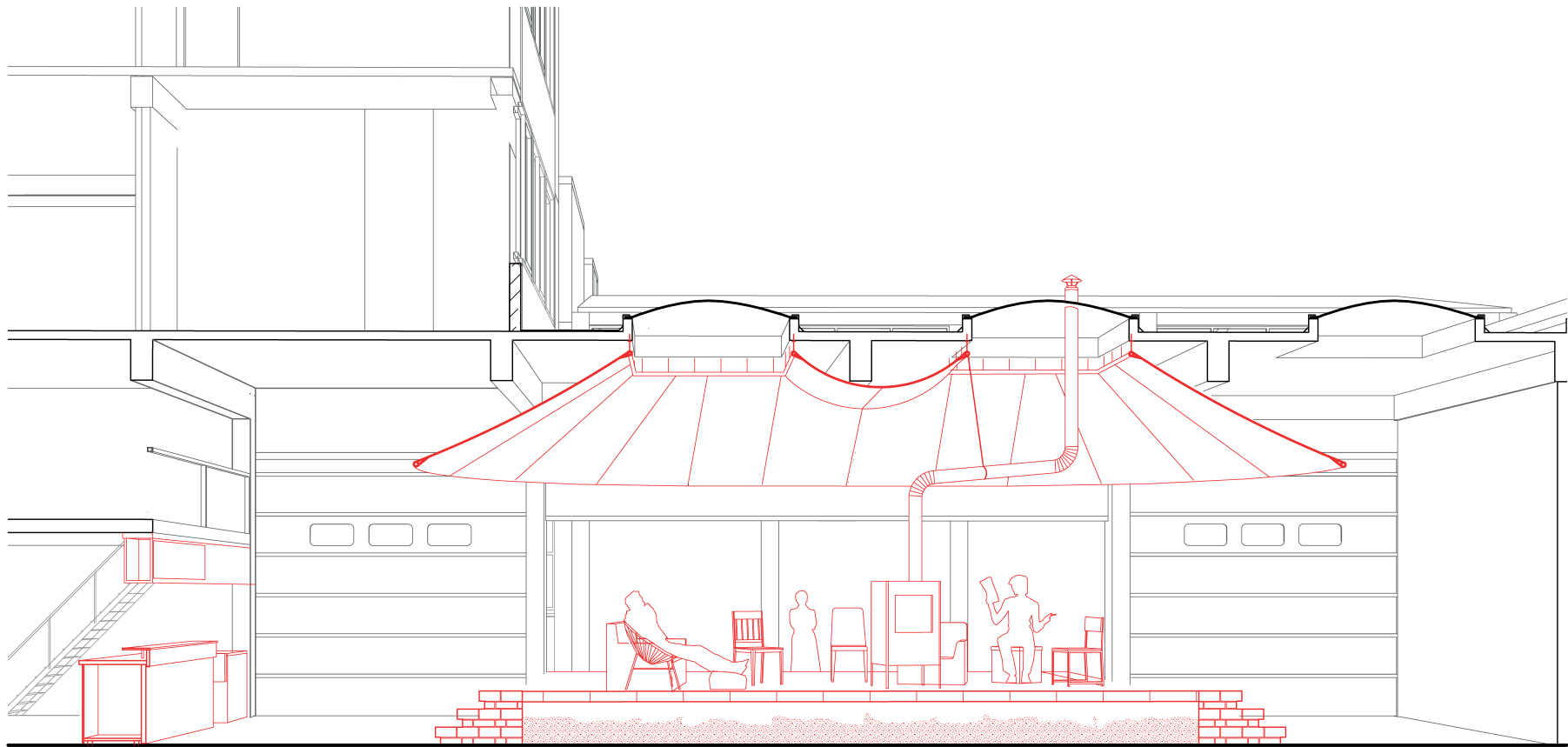
Perspective Section  
1:20

*The Speechpodium*



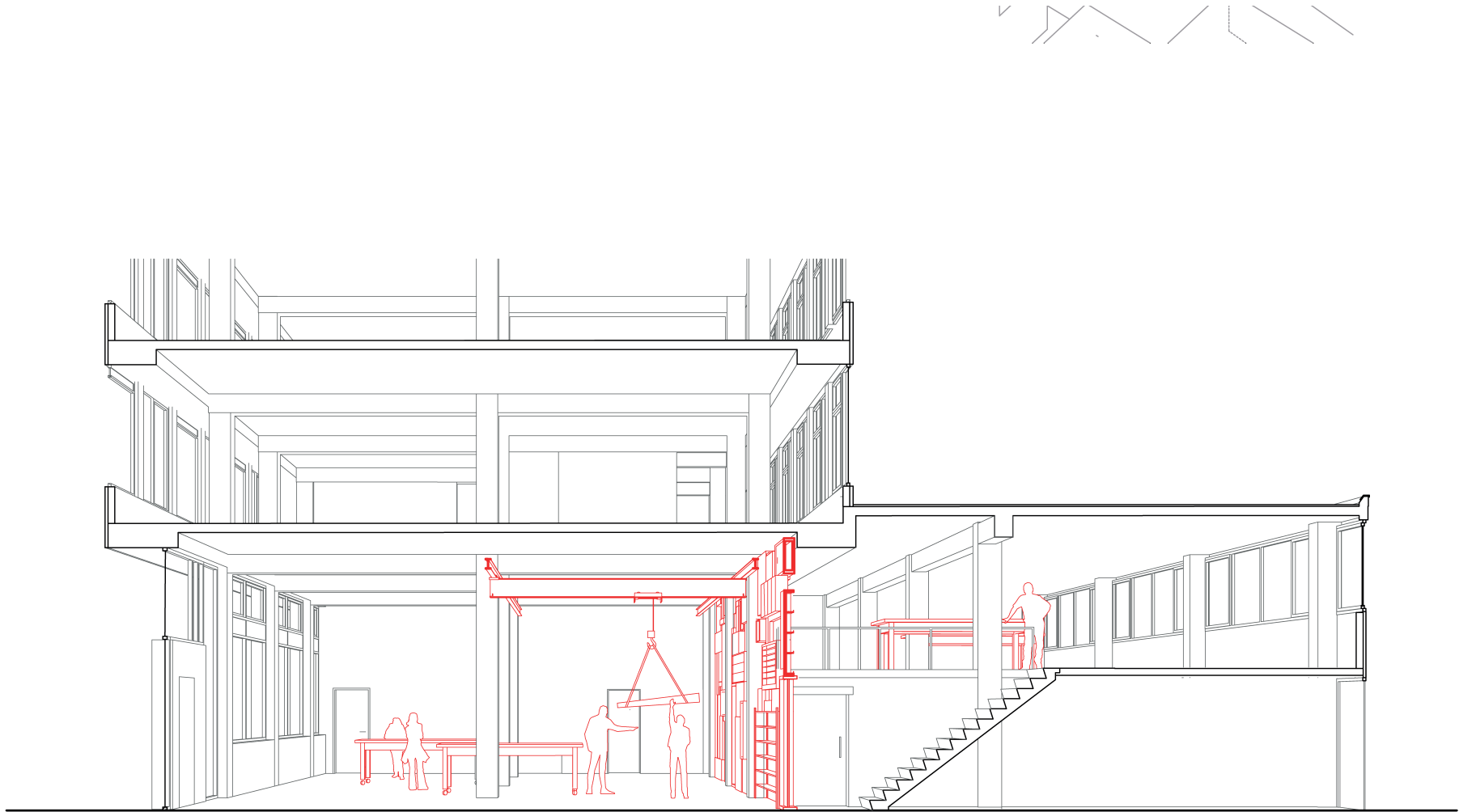
Perspective Section  
1:100

*The Storage*



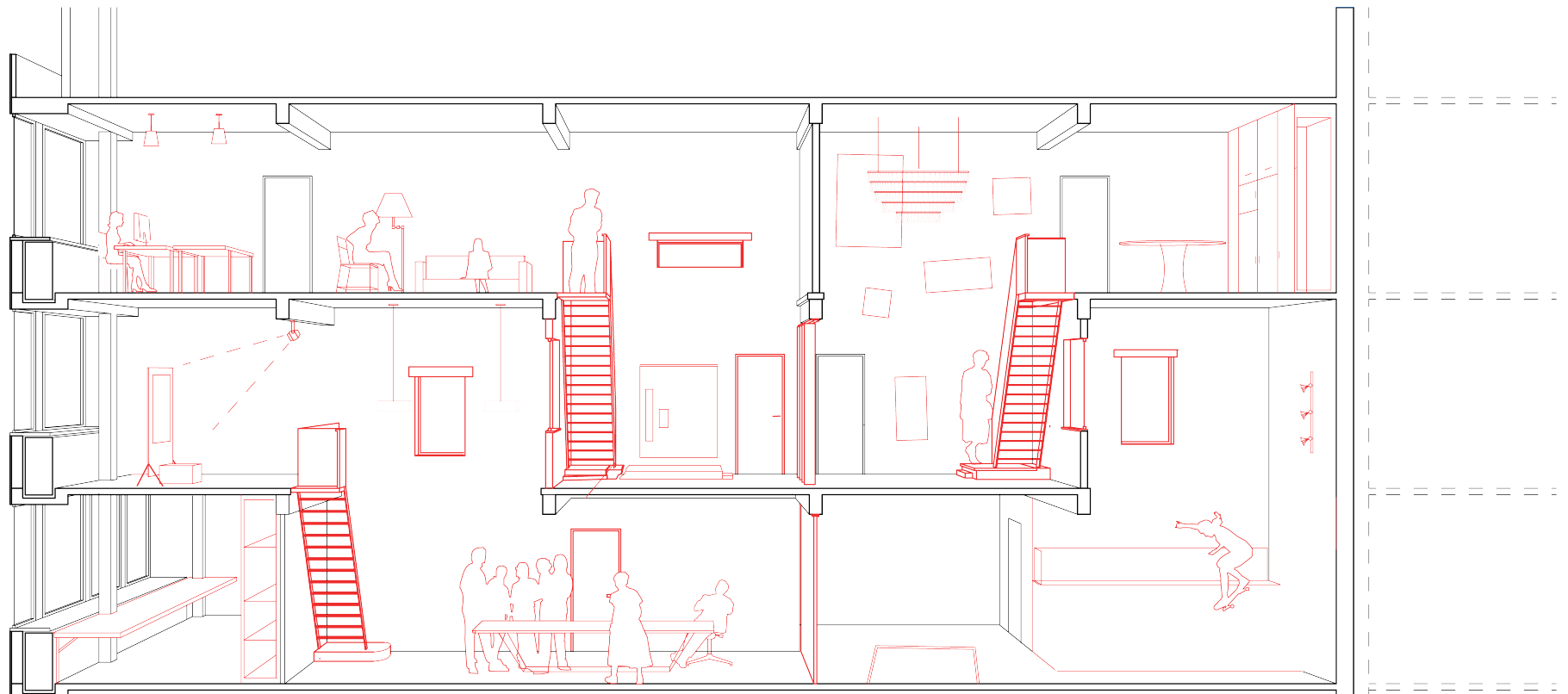
Perspective Section  
1:75

*The Assembly*



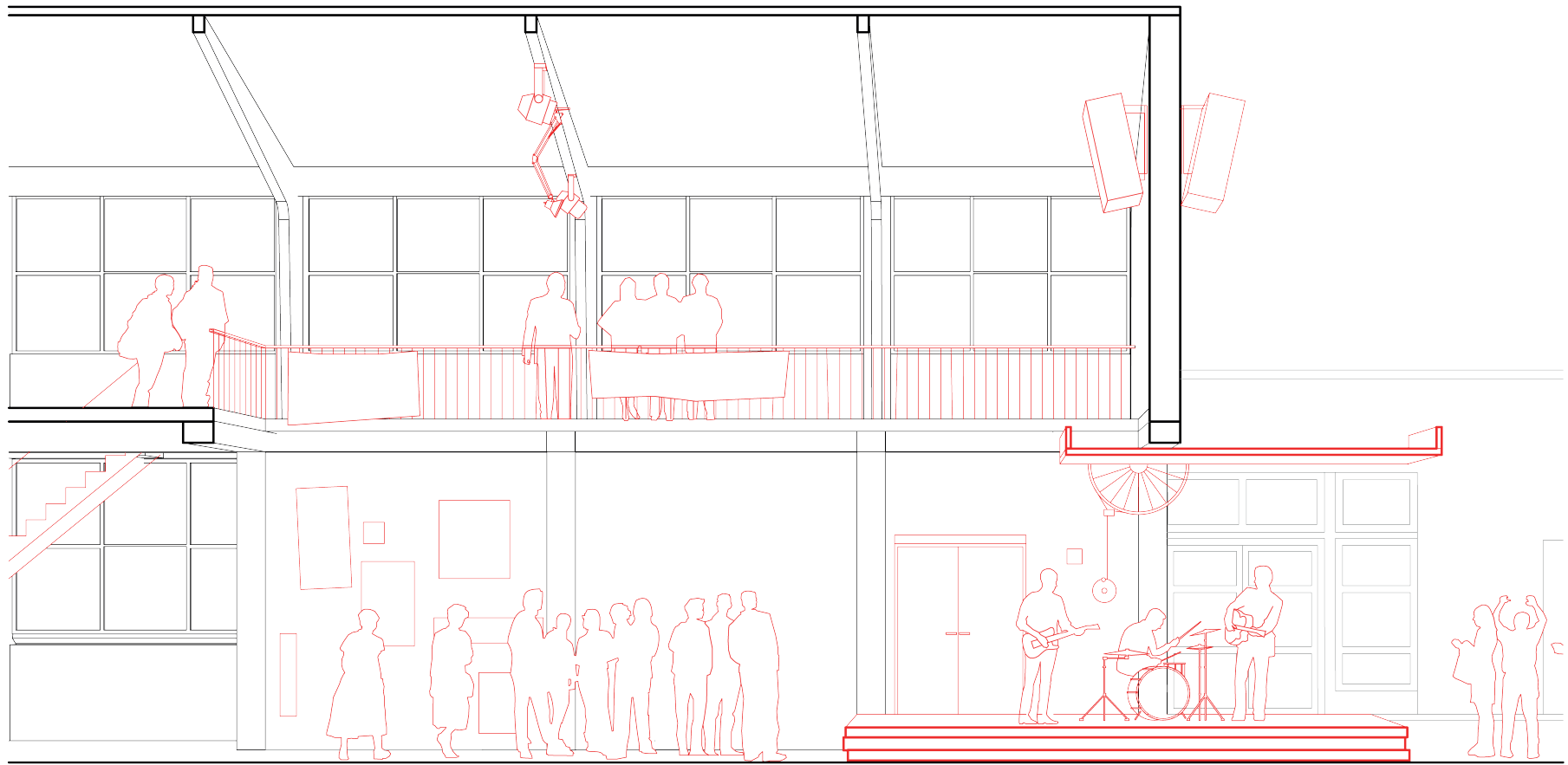
Perspective Section  
1:100

*The Workshop*



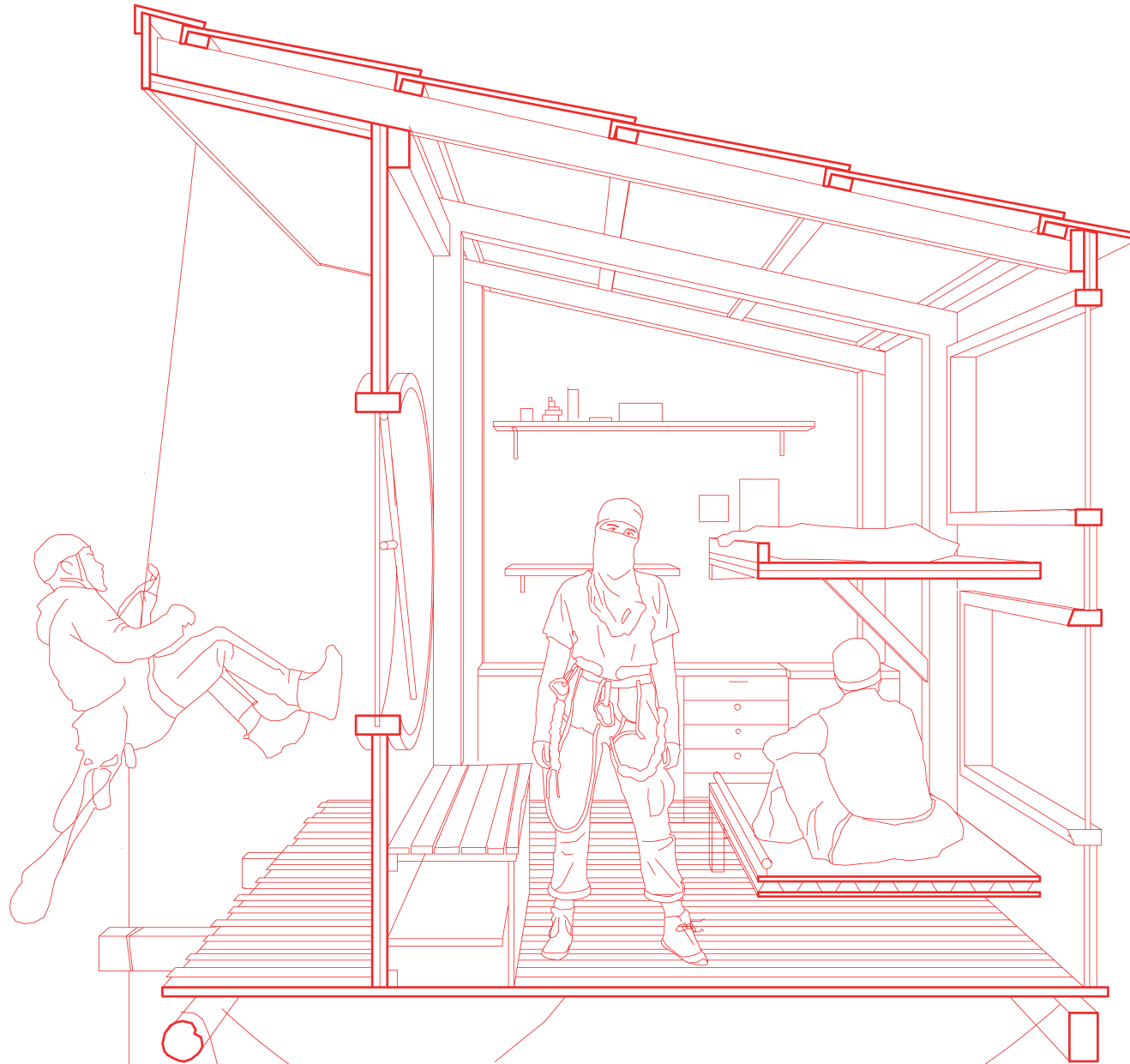
Perspective Section  
1:100

*The Neighbourhood House*



Perspective Section  
1:75

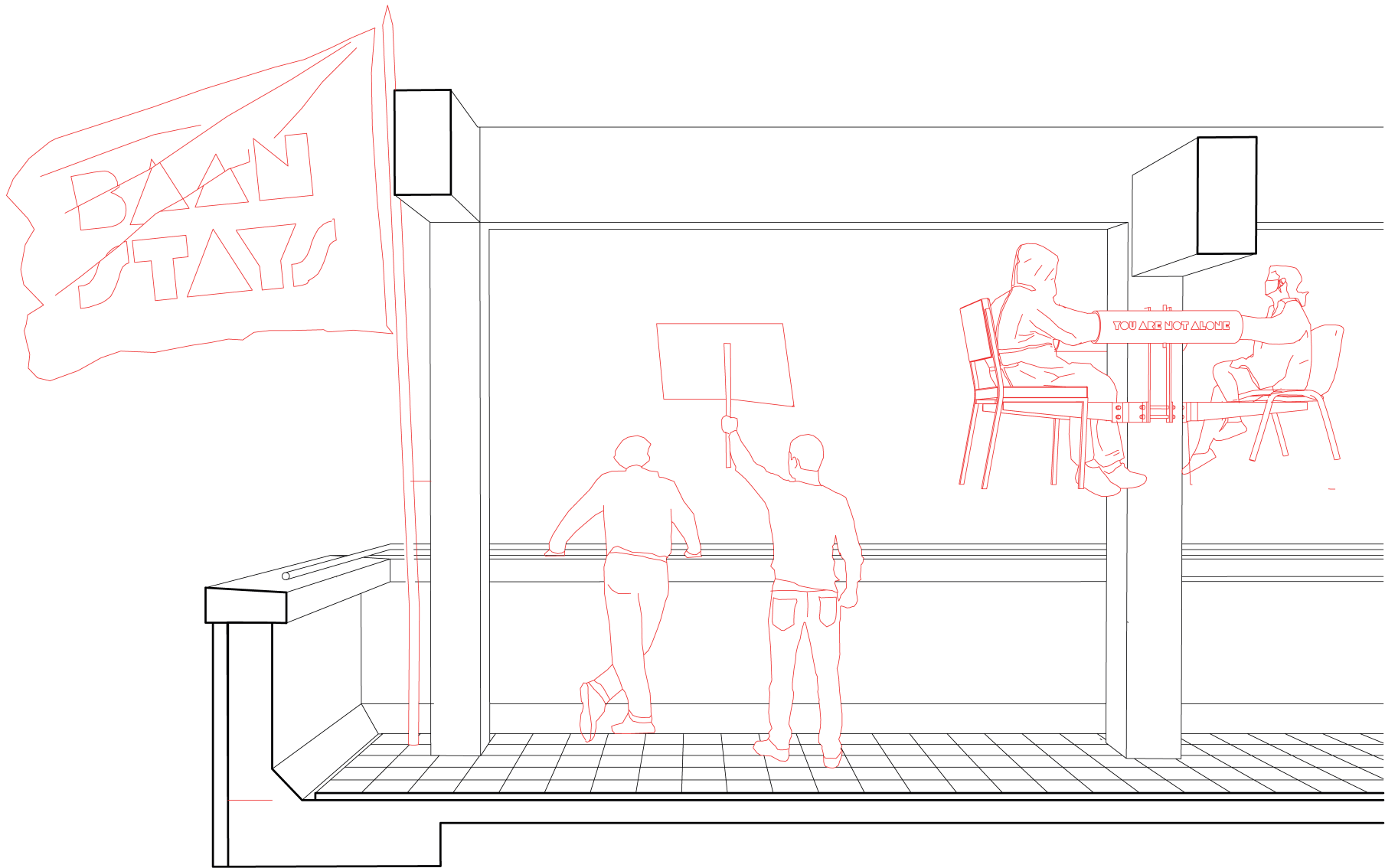
*The Venue*



Perspective Section  
1:25

*The Urban Treehouse*





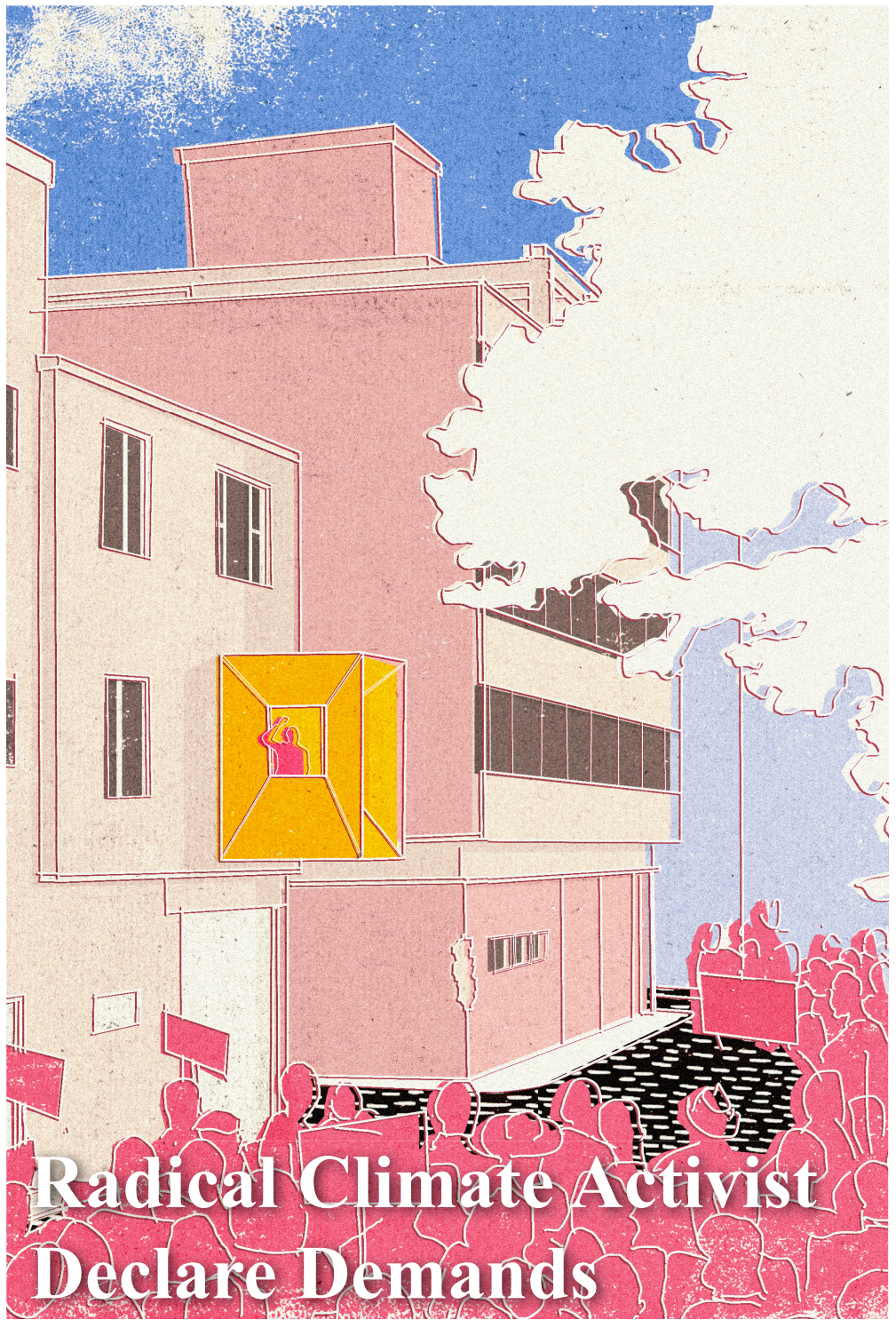
Perspective Section  
1:20

*The Column Barricade*



## An interview with the Developer REDC Company and their high-rise tower plans

[Redacted text block]



## Radical Climate Activist Declare Demands

[Redacted text block]

[Redacted text block]



06110 The founders claiming the Baan

# CONSTRUCTION WORKSHOP

## Collaging Methods

### What

A skillshare workshop, where architects will teach us how to construct with waster material. Together we will build the new assembly space for the Baan Movement

### When?

Next weekend starting on Friday 5pm

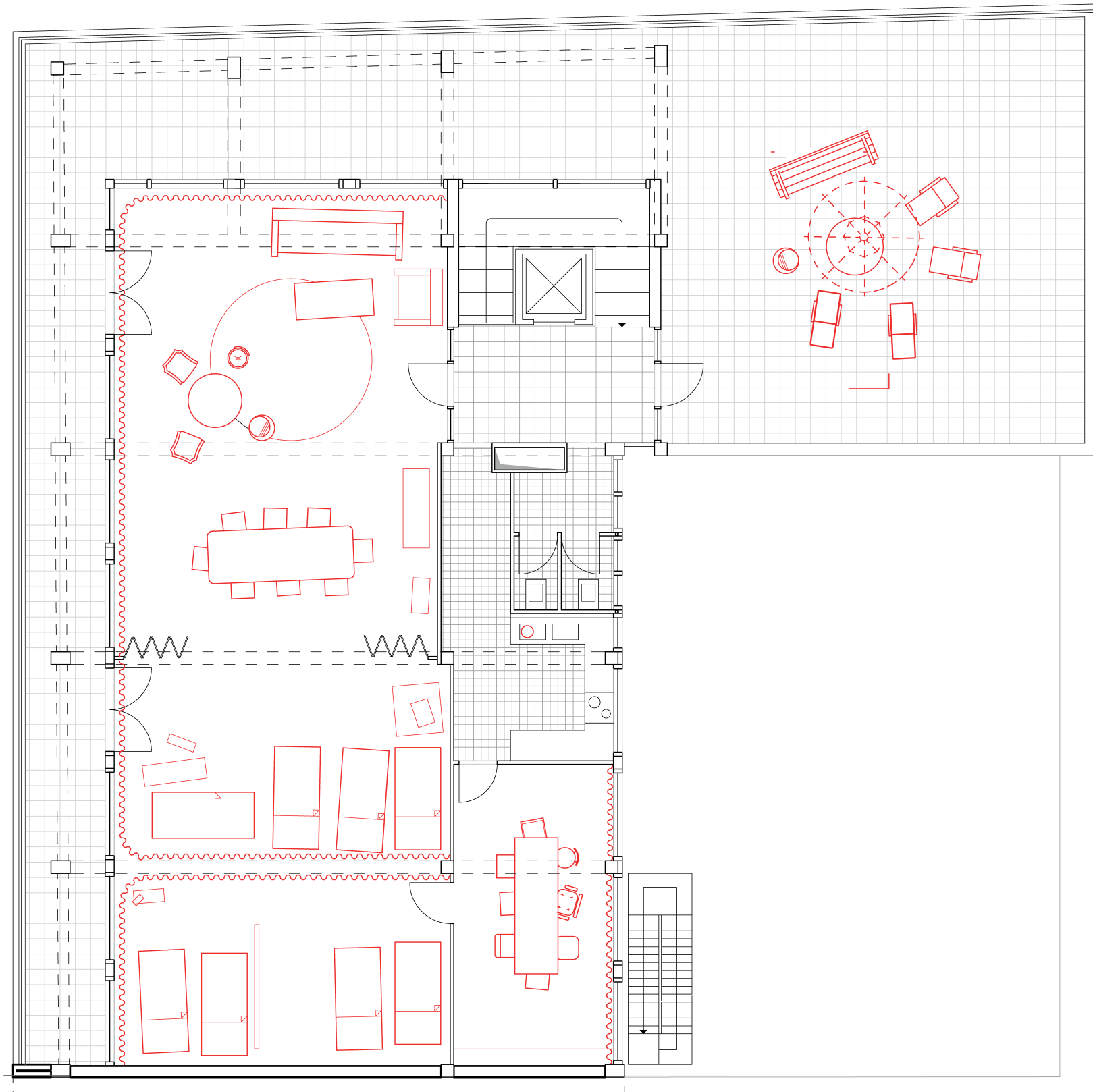
### Where?

Baan 2 Rotterdam

### Contact?

Join the signal group for more information  
[shorturl.at/jyDHL](http://shorturl.at/jyDHL)

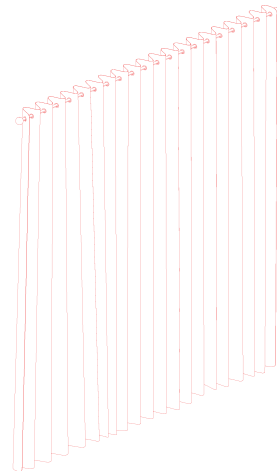
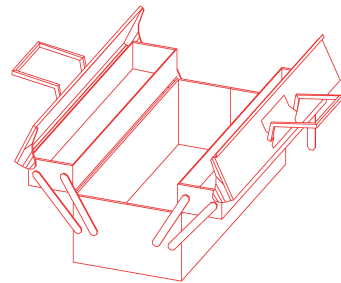
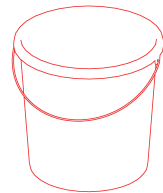
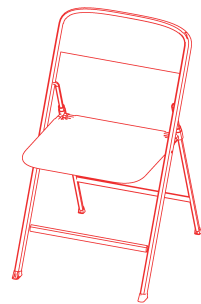




Floorplan +5  
1:100

*The Inhabitation*

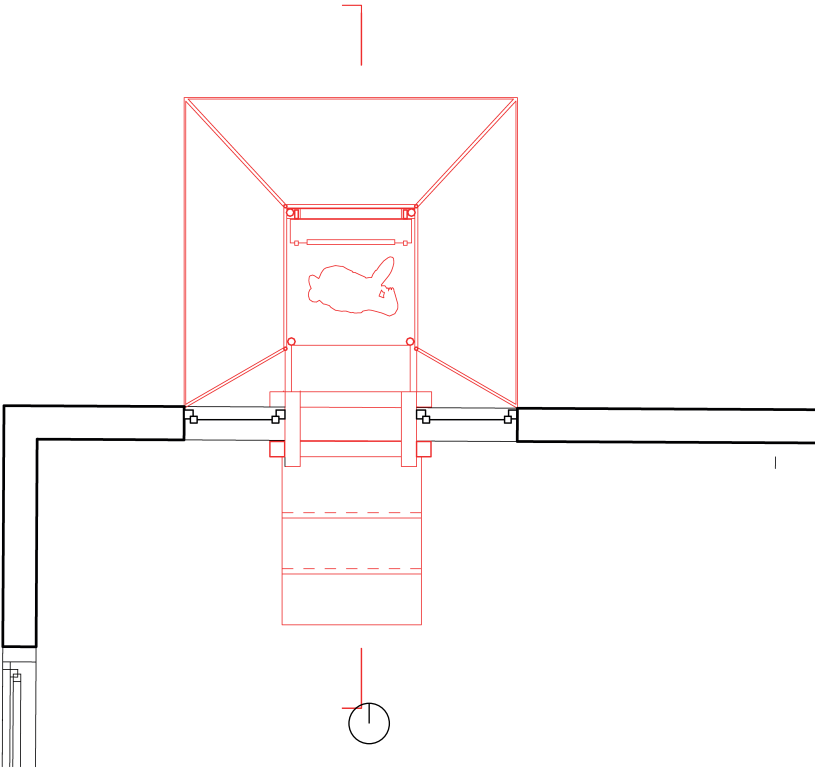




Construction Elements

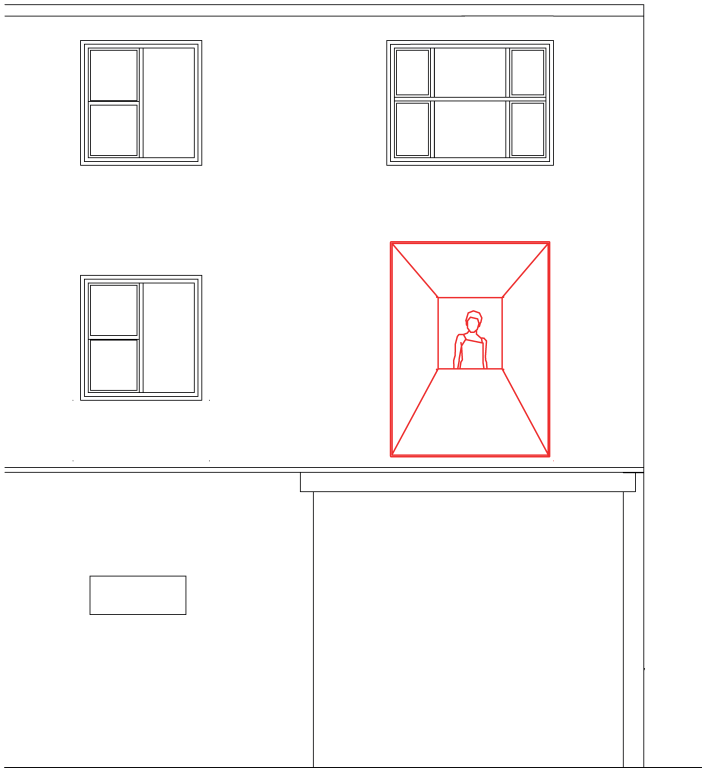
*The Inhabitation*





Floorplan +1  
1:50

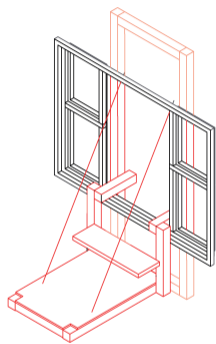
*The Speechpodium*



Elevation  
1:100

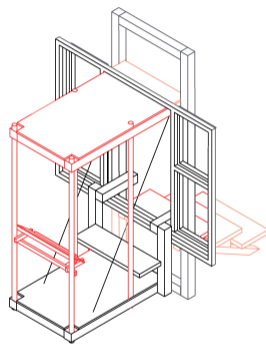
*The Speechpodium*

FLOOR PLAN 1100

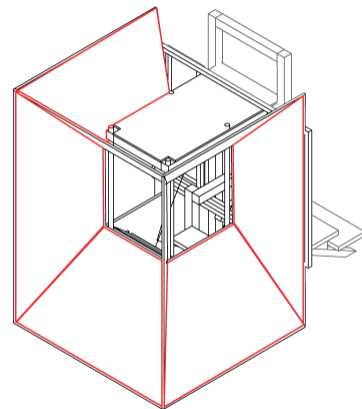
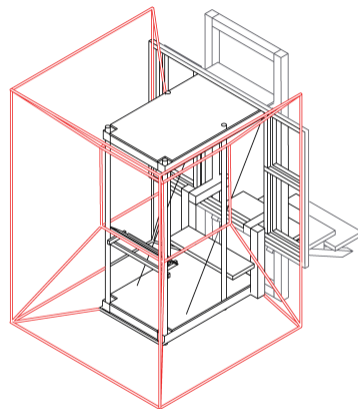


Construction Process

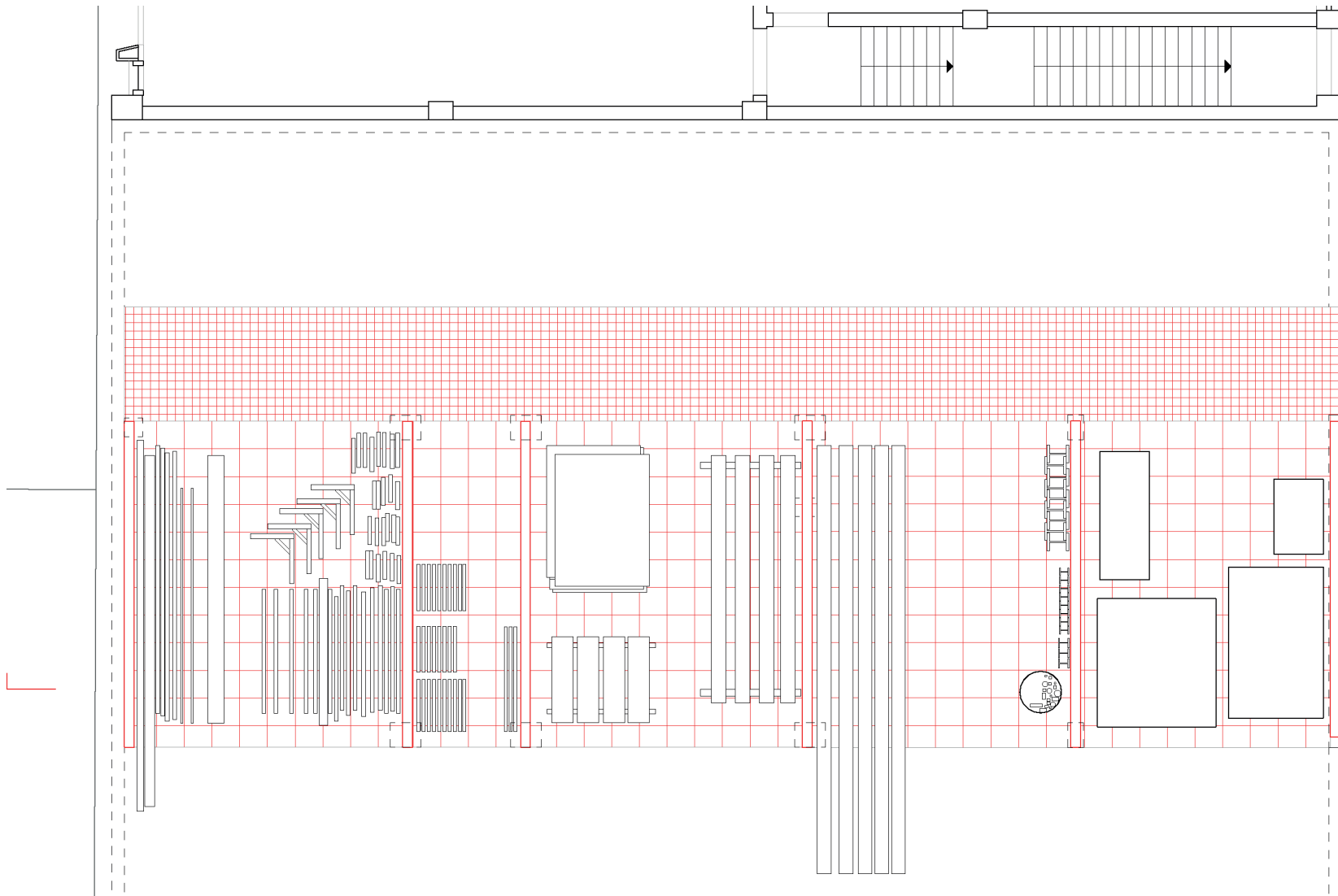
ELEVATION 1100



Construction Elements

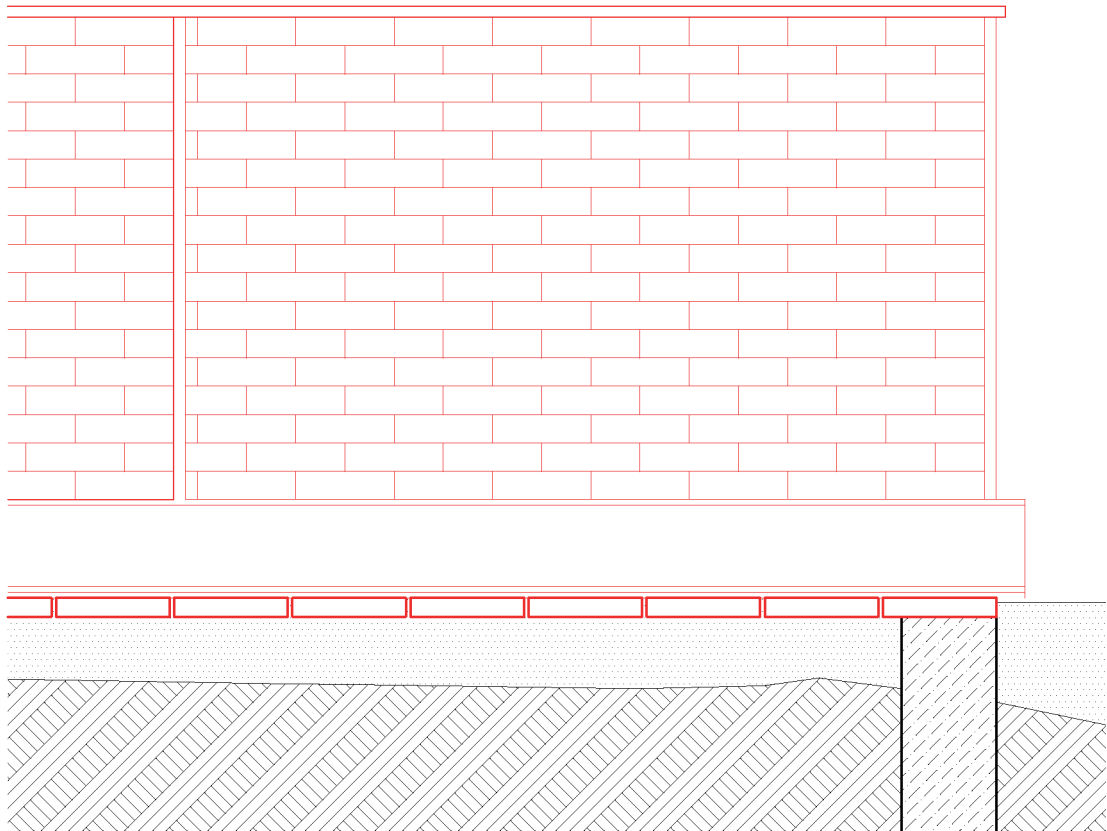


*The Speechpodium*



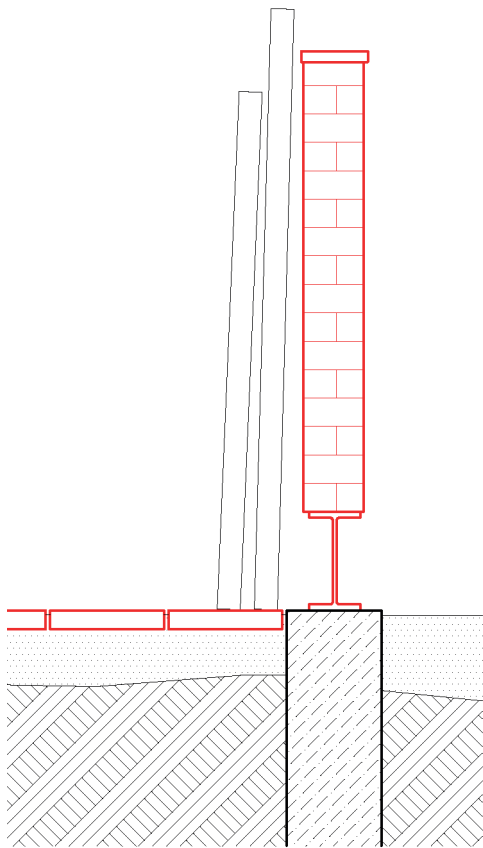
Floorplan 0  
1:100

*The Storage*



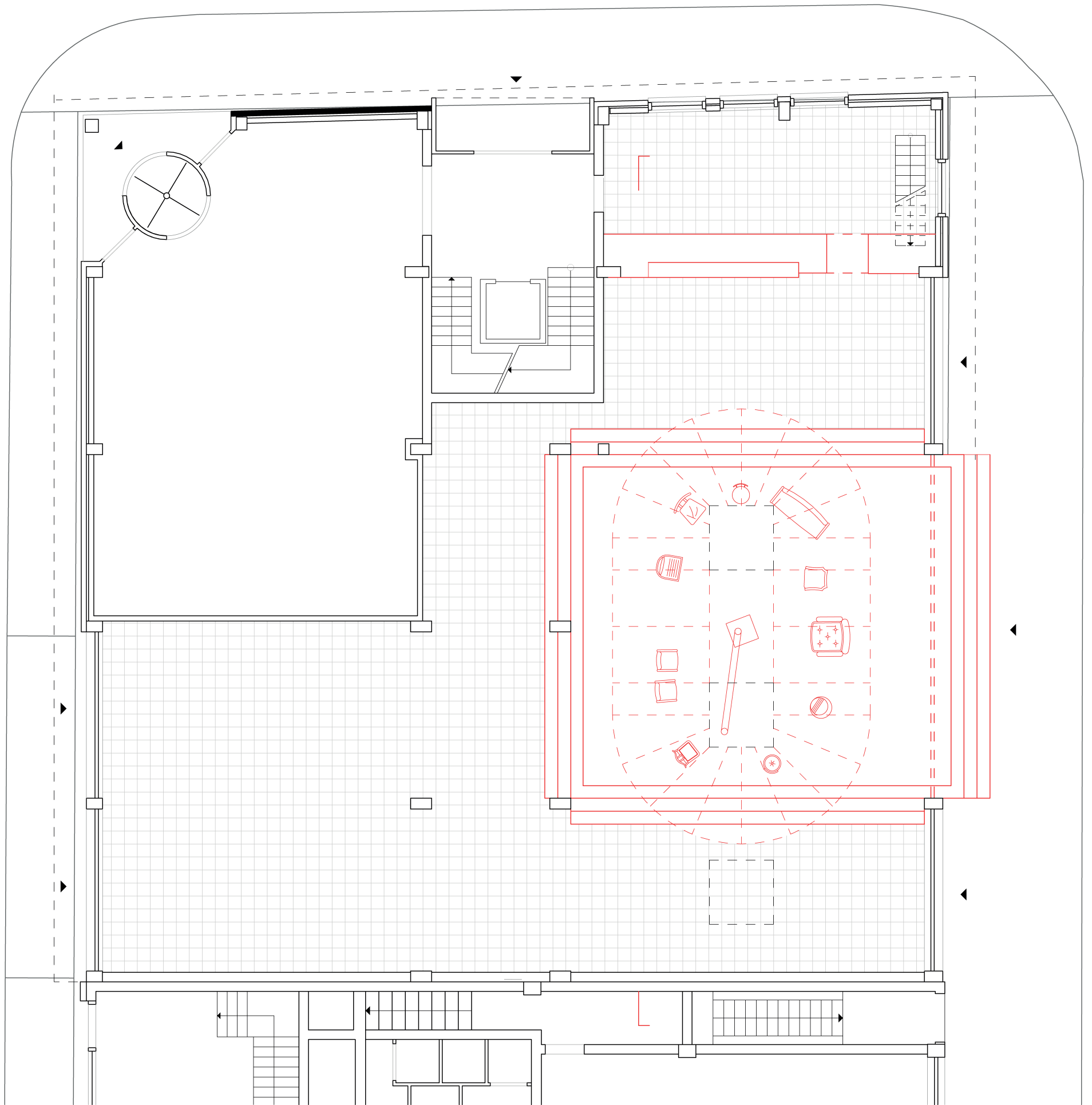
Detail Sparation  
1:10

*The Storage*



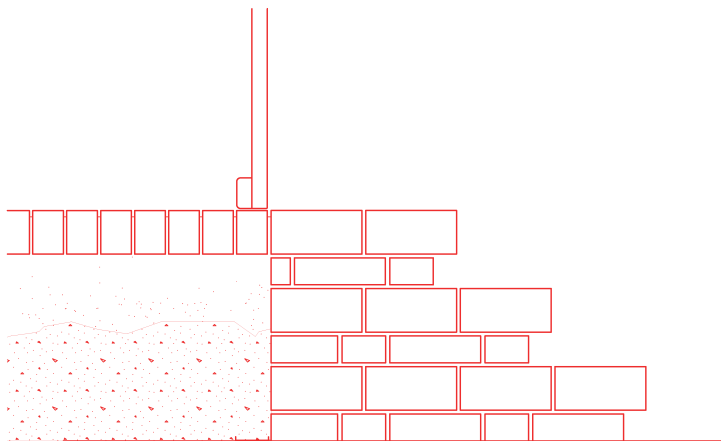
Detail Separation  
1:10

*The Storage*



Floorplan 0  
1:100

*The Assembly*

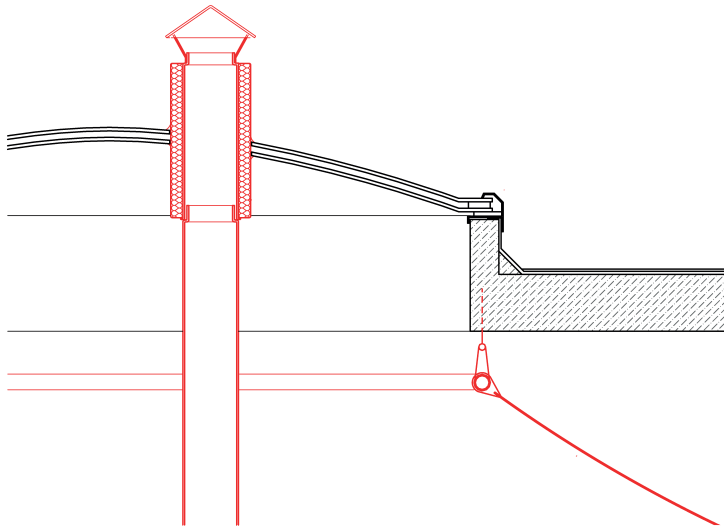


Detail Podium

1:10

*The Assembly*

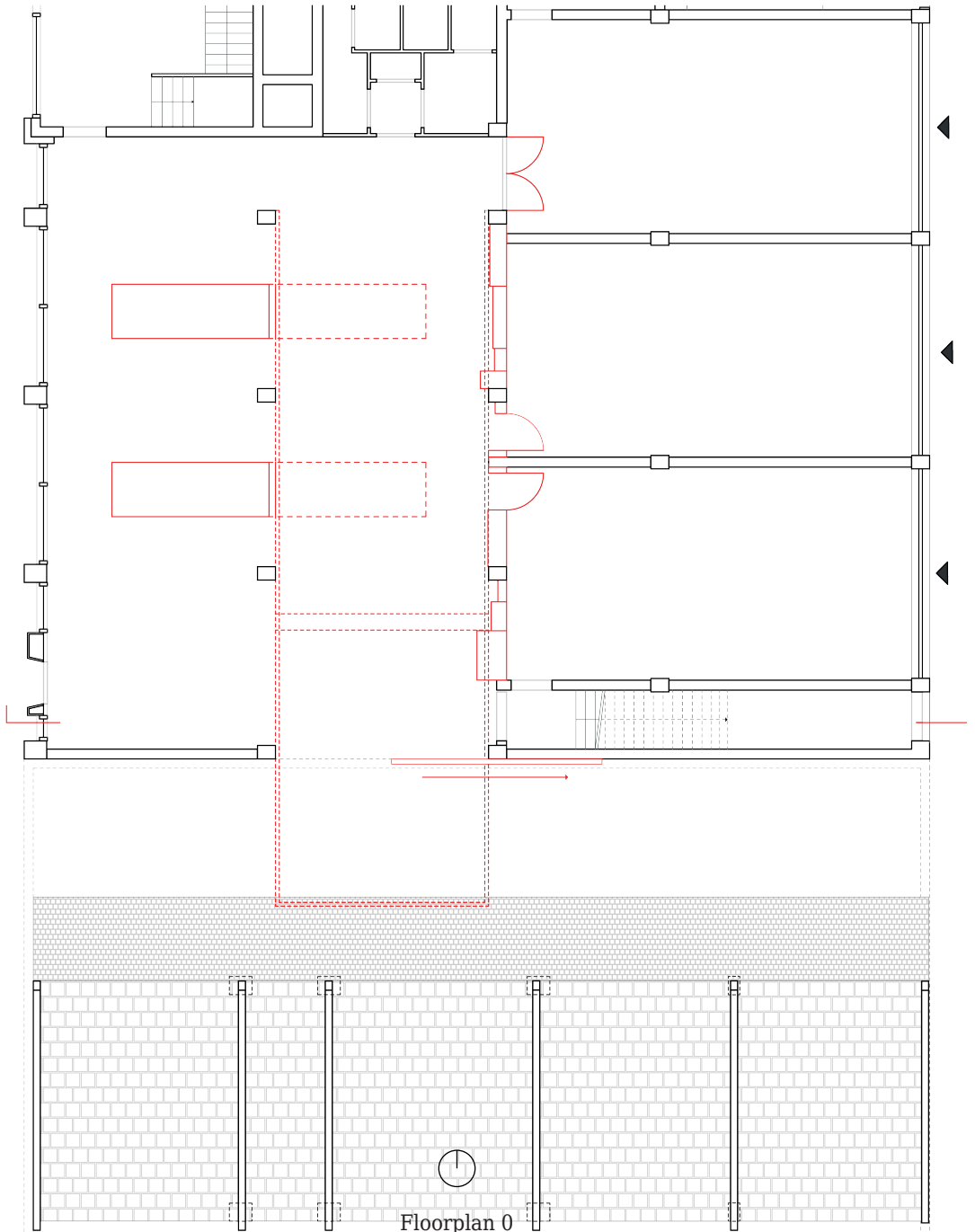




Detail Furnace

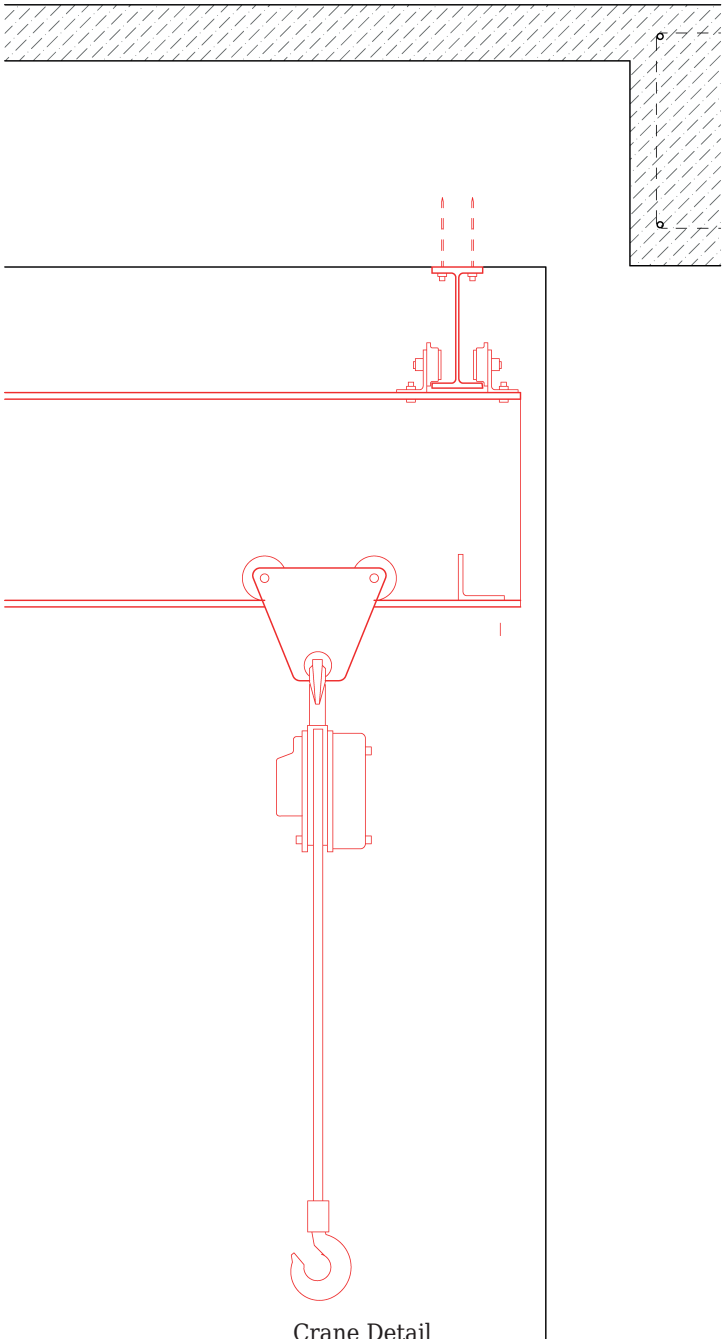
1:10

*The Assembly*



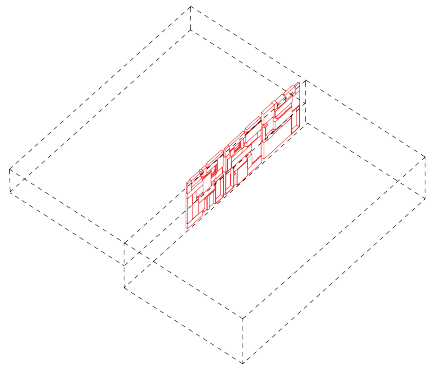
Floorplan 0  
1:150

*The Workshop*

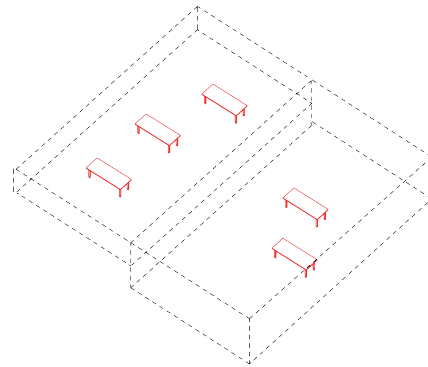
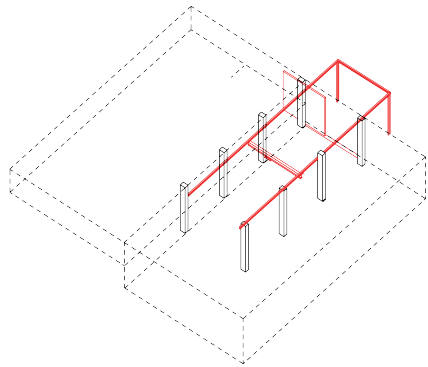


Crane Detail  
1:10

GROUND FLOOR 1.100

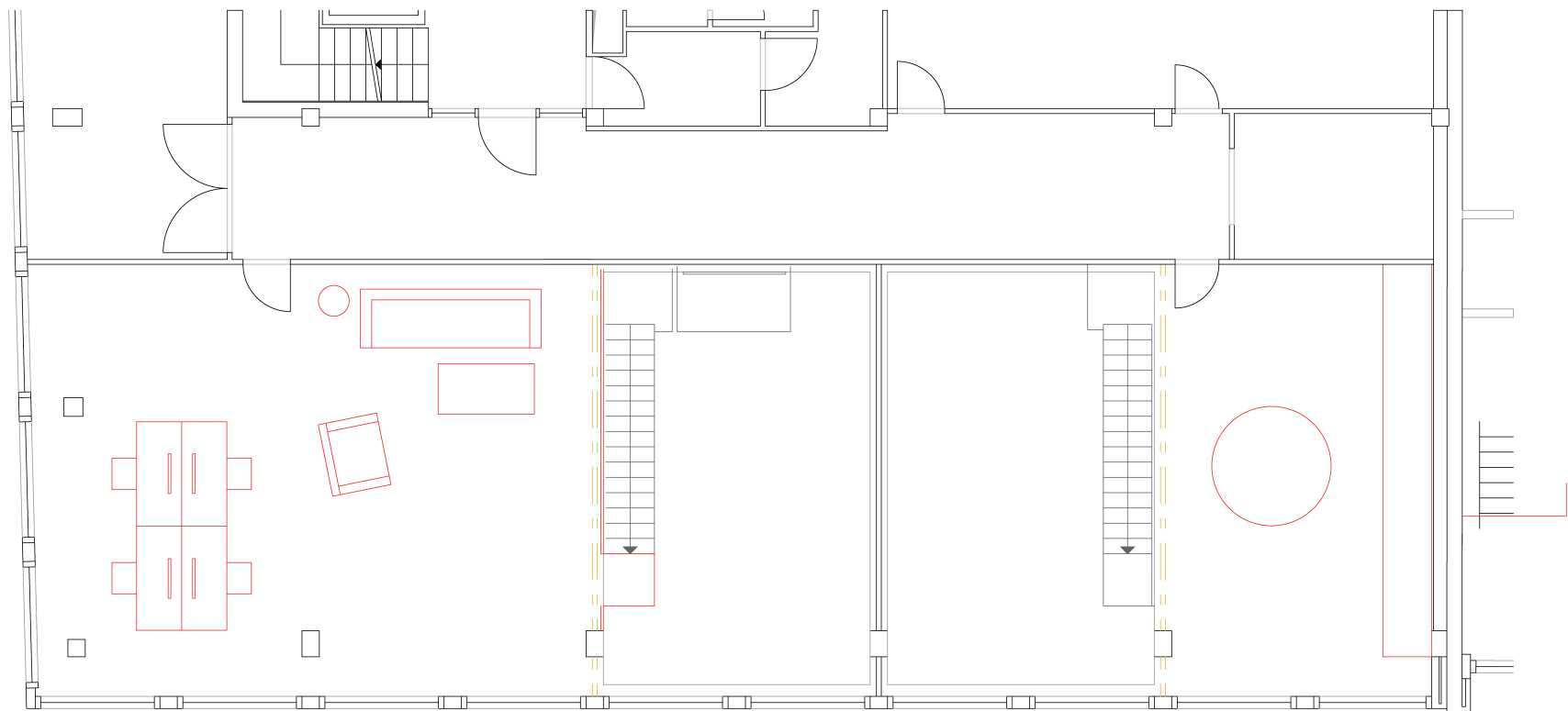


DETAIL STAIRS 1.10



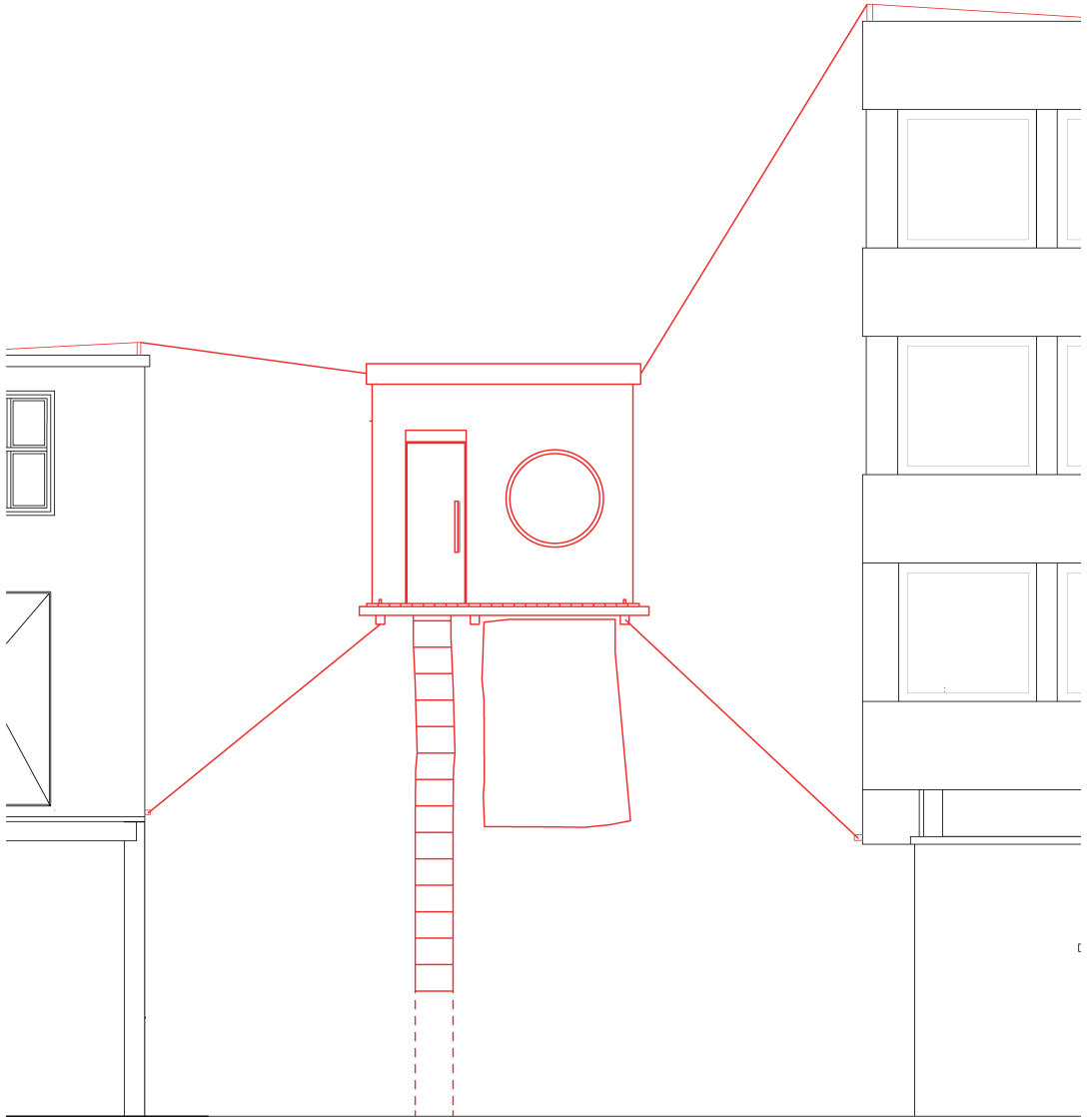
Workshop Elements

*The Workshop*



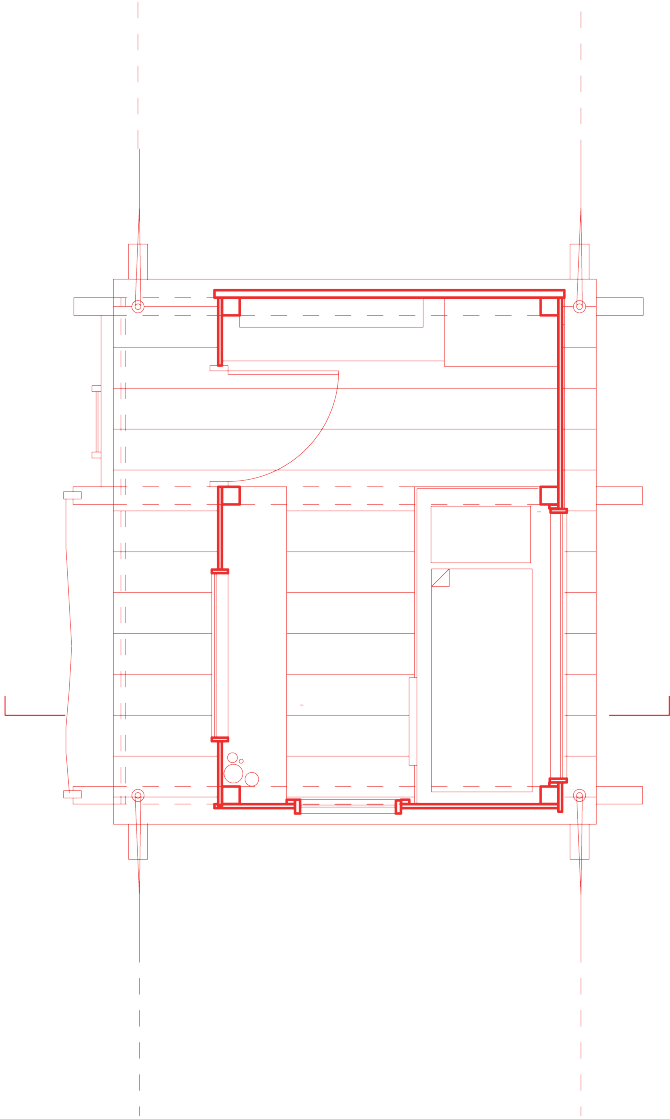
Floorplan +3  
1:100

*The Neighbourhood House*



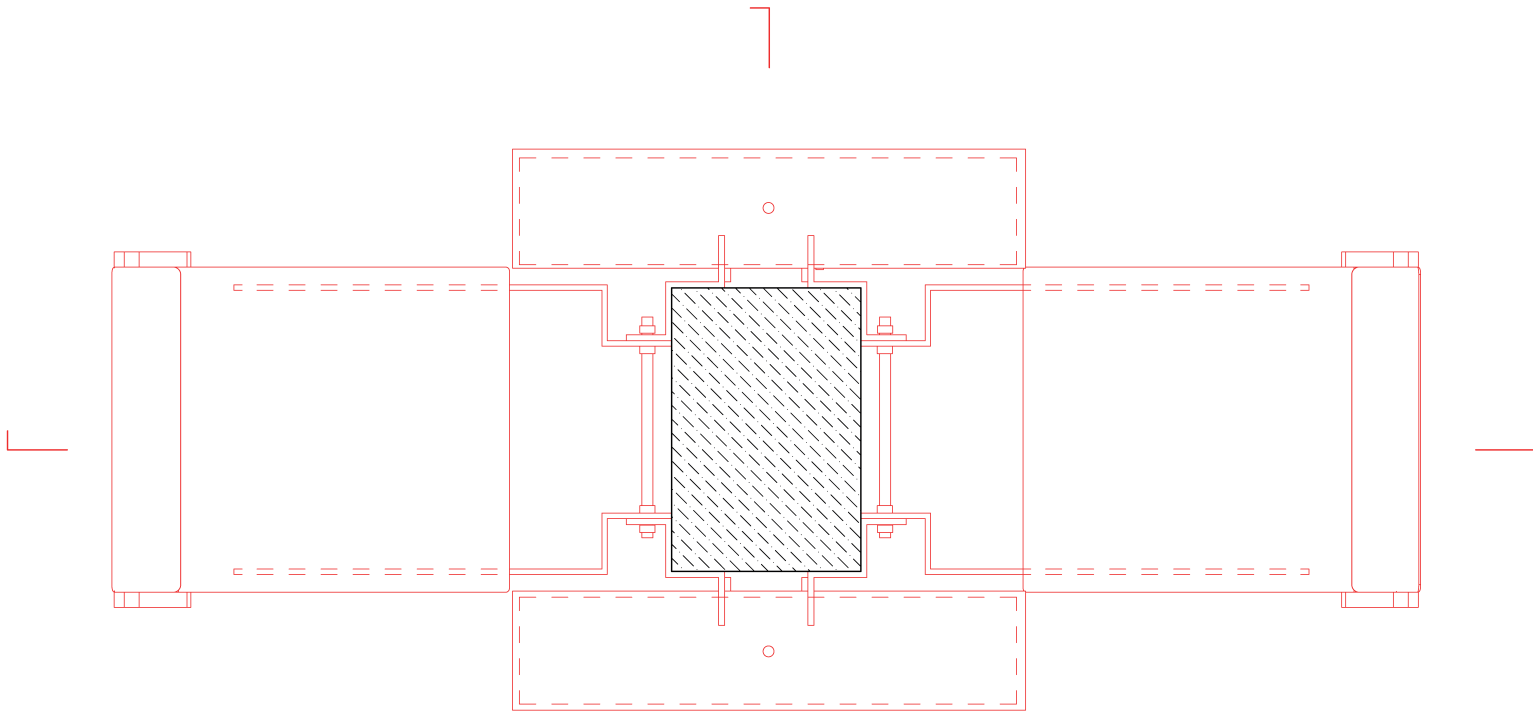
Elevation  
1:100

*The Urban Treehouse*



Floorplan  
1:50

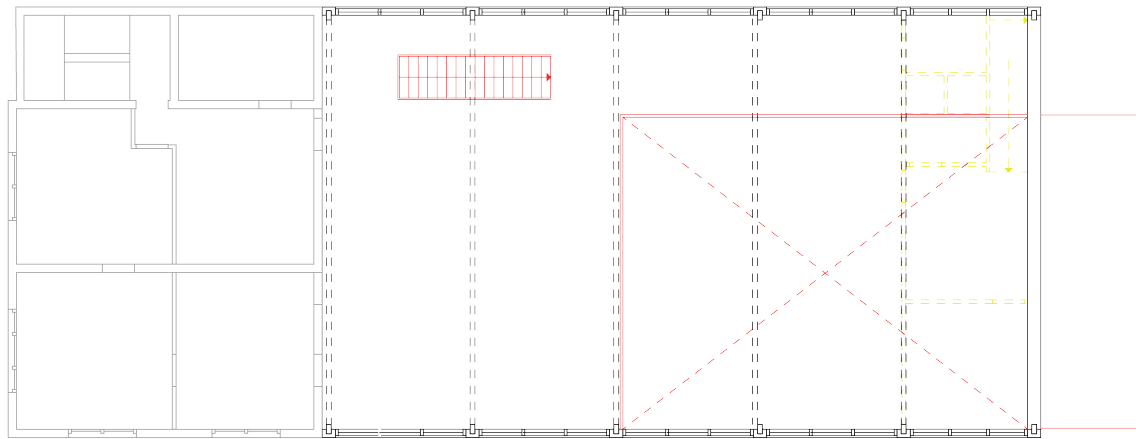
*The Urban Treehouse*



Floorplan  
1:10

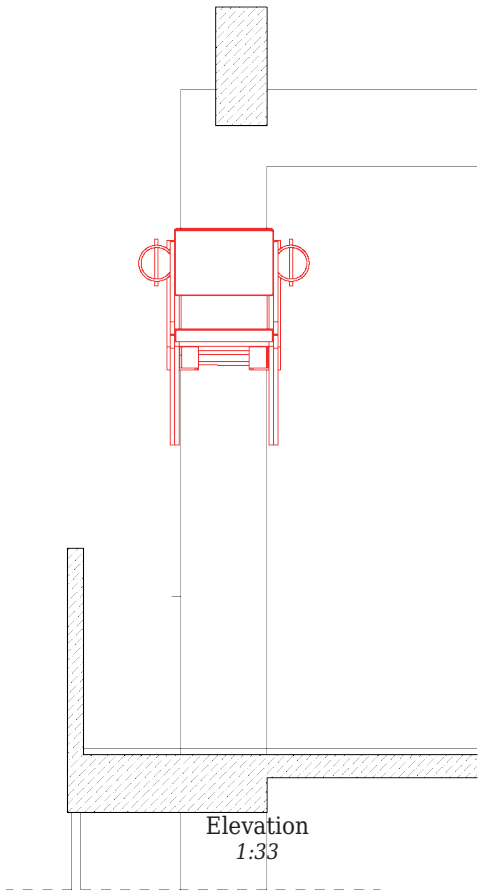
*The Column Barricade*





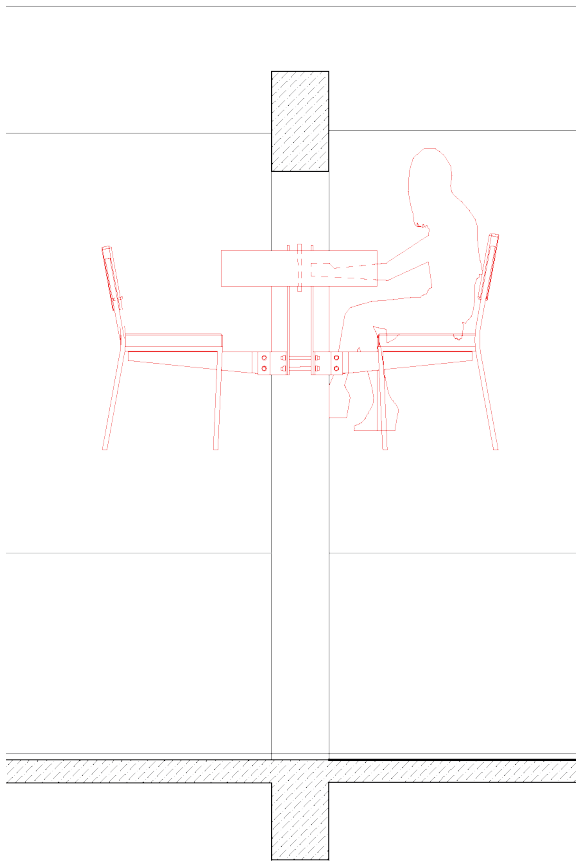
Floorplan +1  
1:200

*The Venue*



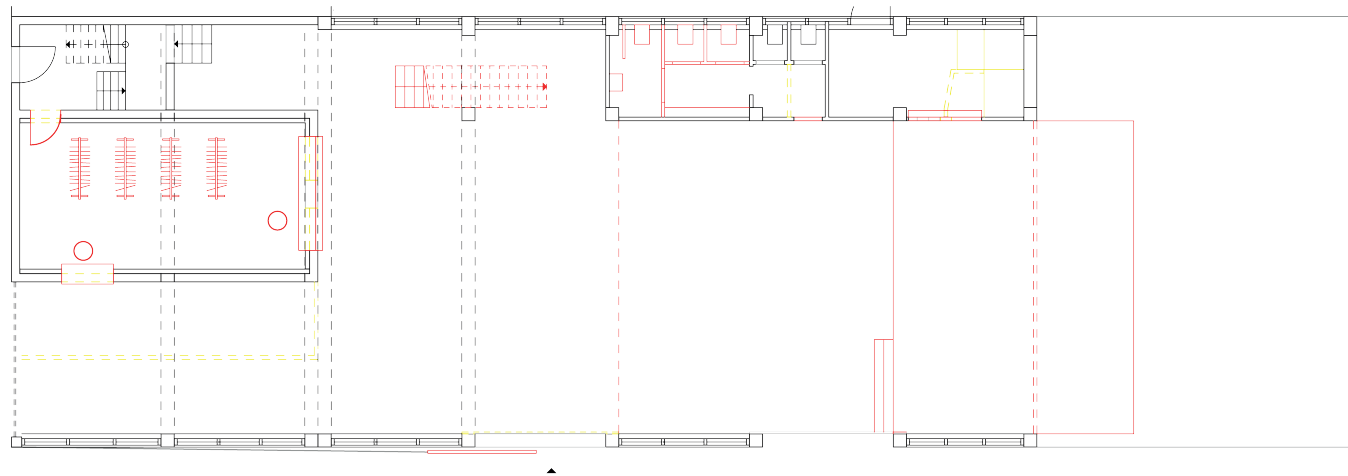
Elevation  
1:33

*The Column Barricade*



Elevation  
1:33

*The Column Barricade*



Floorplan +0  
1:200

*The Venue*

Demand One

### **▲KNOWLEDGE THE IMPACT**

The science is clear. We are on a trajectory to climate catastrophe and the status-quo of the building industry is one of its drivers. With 38 percent of the worldwide Co<sup>2</sup> emissions, the impact of the sector is contributing to an increase in suffering, death, and demise to a growing number of humans, and non-humans on this planet. While this is a fact, governments, developers, and architects are continuing to erect new destructive concrete high-rise towers and refuses to initiate the necessary change in the building industry. *We therefore demand a halt of all construction projects in the city and urge for their re-evaluation.*

Demand Two

### **ENGAGE IN DIRECT ▲CTION**

We challenge the powers, that refuse to acknowledge the impact of the building industry on the networks of life. We do so by engaging in non-violent direct action, to pressure for radical systemic change. *We therefore demand from citizens, architects, activists, and city makers to join us in civil-disobedient action.*

Demand Three

### **BUILD FOR LIFE**

The city that we engage in, is dominated by economic forces, which destroy livelihoods. We want a city, that is build for life, for human and non-human actors, not for the extraction of capital. This change from financial interest to a valuable city is what we aim for. *We therefore demand for a radical change in building policy, that puts the values of life over the financial interests of the economy.*

Demand Four

### **▲CT IN SOLIDARITY**

An action for networks for life, is an action for justice, and we are in solidarity with the voices of the oppressed and marginalized. We stand with minorities of the FLINTA, BIPOC, and LGBTQI+ communities and advocate for the unheard voices of the non-human actors in the city. *We therefore demand from government and policy-makers to include the voices in the transition to a just legislation for the city.*

# EVICTIION NOTICE

**To:**

Tenant: [REDACTED]  
Address: Baan Tower  
2-4 Baan  
3011 CB Rotterdam

Pursuant to the provisions of BWBR0028053, you are hereby given an eviction notice to vacate, on or before [REDACTED]-[REDACTED]-[REDACTED], the premises and appurtenances owned by [REDACTED] of the City of Rotterdam, the Netherlands, which premises are now occupied by you.

**The reason for this EVICTION NOTICE is:**

[ ] Your failure to pay rent due and in arrears when demanded pursuant BWBR0028053. A demand to pay rent was served upon you on \_\_\_\_\_, 20\_\_\_\_, and you have refused or neglected to pay rent due for the period \_\_\_\_\_, 20\_\_\_\_, to \_\_\_\_\_, 20\_\_\_\_.

[X] Substantial damage done to the premises pursuant to as follows:  
**irreparable structural damage to roof, northern façade, foundation**  
**damage to entrance door, garage doors, windows.**

[X] Your failure to comply with a material term of the lease pursuant BWBR0028053 as follows:

- **trespassing of property**
- **damage to property**
- **barricading entrance**

Date: [REDACTED]-[REDACTED]-[REDACTED]

Landlord: [REDACTED]  
Signature landlord: [REDACTED]  
[REDACTED]

































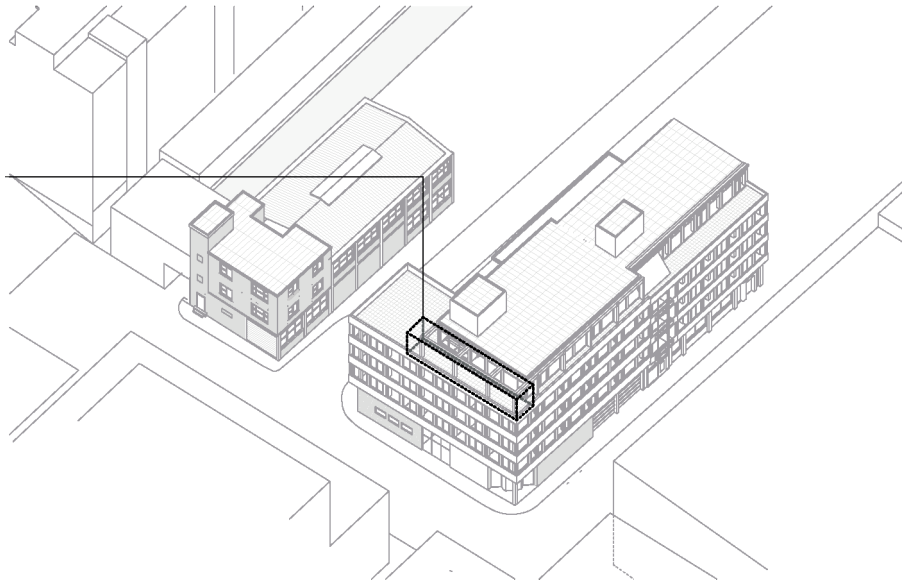


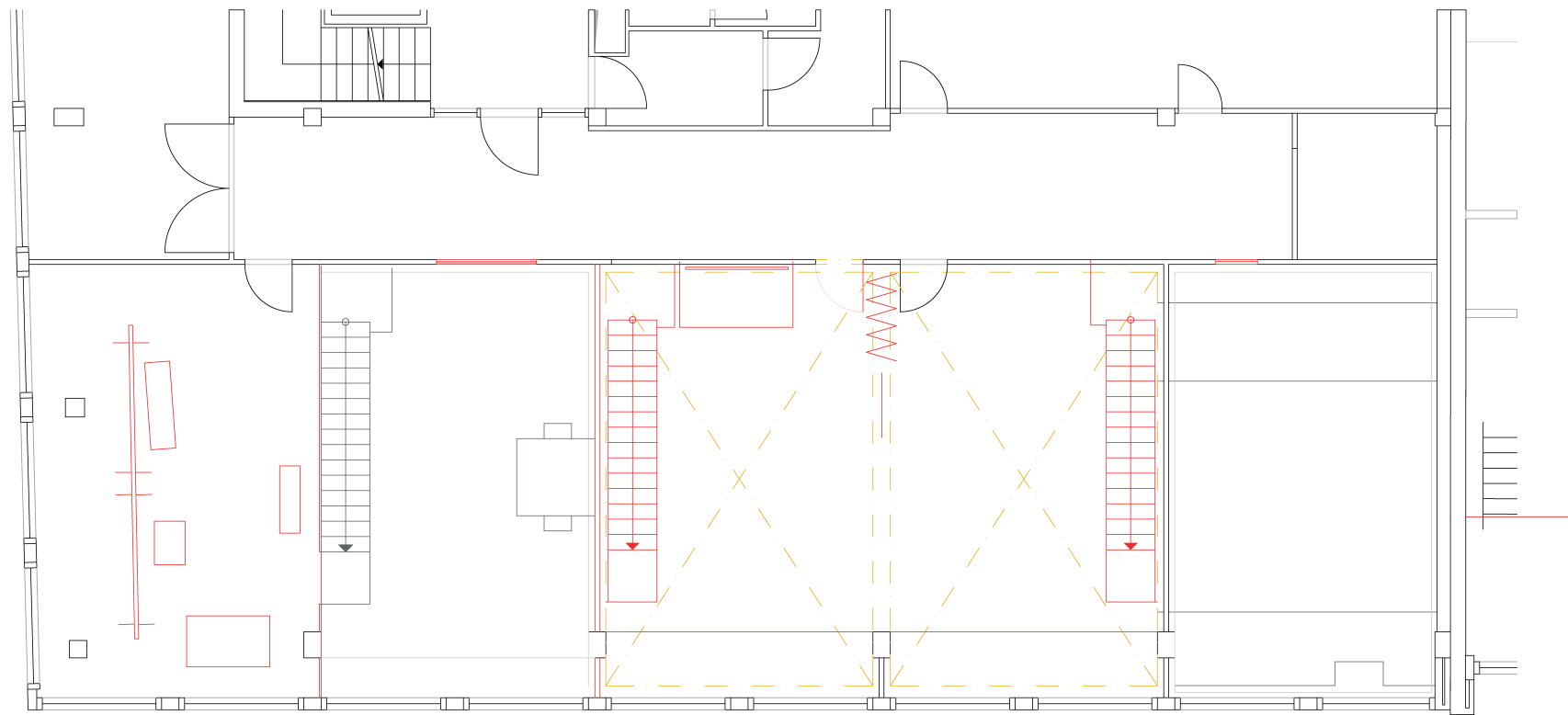






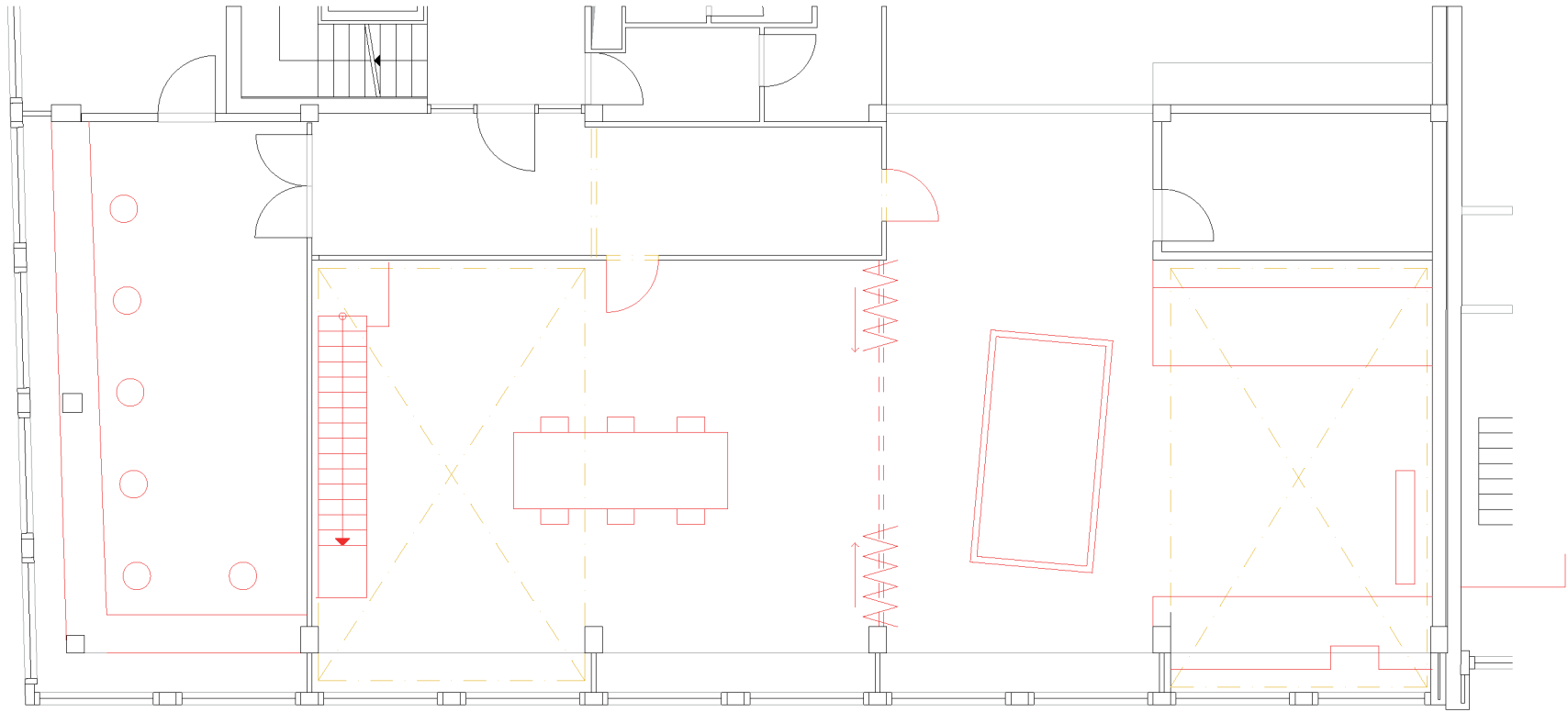






Floorplan +2  
1:100

*The Neighbourhood House*



Floorplan +1  
1:100

*The Neighbourhood House*